

Data Path : Z:\HPCHEM1\BNA F\DATA\BF102716\
 Data File : BF090888.D
 Acq On : 28 Oct 2016 1:08
 Operator : UM/SJ
 Sample : H5423-05
 Misc :
 ALS Vial : 21 Sample Multiplier: 1

Instrument :
 BNA_F
 ClientSampleId :
 SB-3COMP(0-16FEET)

Manual Integrations
 APPROVED

sohil
 10/28/2016 5:22:56 PM

Quant Time: Oct 28 13:21:50 2016
 Quant Method : Z:\HPCHEM1\BNA F\METHODS\8270-BF102616.M
 Quant Title : ASP BNA STANDARDS FOR 5 POINT CALIBRATION
 QLast Update : Thu Oct 27 18:46:43 2016
 Response via : Initial Calibration

Internal Standards	R.T.	QIon	Response	Conc	Units	Dev(Min)
1) 1,4-Dichlorobenzene-d4	6.77	152	150157	20.00	ng	0.00
21) Naphthalene-d8	8.06	136	532890	20.00	ng	0.00
38) Acenaphthene-d10	9.81	164	257116	20.00	ng	-0.01
63) Phenanthrene-d10	11.30	188	321897	20.00	ng	-0.01
75) Chrysene-d12	13.94	240	345215	20.00	ng	-0.01
86) Perylene-d12	15.35	264	332060	20.00	ng	-0.01

System Monitoring Compounds

5) 2-Fluorophenol	5.38	112	1467065	170.82	ng	0.01
7) Phenol-d6	6.42	99	1656720	142.99	ng	0.00
23) Nitrobenzene-d5	7.34	82	922156	113.28	ng	-0.01
41) 2,4,6-Tribromophenol	10.60	330	301035	113.93	ng	-0.01
44) 2-Fluorobiphenyl	9.14	172	1350585	92.24	ng	-0.01
78) Terphenyl-d14	12.89	244	1009687	73.69	ng	-0.01

Target Compounds

Target Compounds	R.T.	QIon	Response	Conc	Units	Qvalue
10) Phenol	6.43	94	144575	11.32	ng	# 63
20) 3+4-Methylphenols	7.20	107	220733	23.66	ng	88
31) Naphthalene	8.09	128	99445	3.99	ng	99
49) Dimethylphthalate	9.54	163	632739	36.83	ng	# 97
51) Acenaphthene	9.85	154	56163	3.82	ng	88
57) Fluorene	10.36	166	46273	2.98	ng	88
70) Phenanthrene	11.32	178	331416	20.22	ng	97
71) Anthracene	11.37	178	95345	5.52	ng	96
72) Carbazole	11.53	167	37020	2.43	ng	# 92
74) Fluoranthene	12.51	202	514605	28.67	ng	91
77) Pyrene	12.74	202	486279	22.26	ng	97
80) Benzo(a)anthracene	13.93	228	296268m	16.17	ng	
82) Chrysene	13.96	228	267279m	14.42	ng	
85) Indeno(1,2,3-cd)pyrene	16.71	276	107658	6.56	ng	# 89
87) Benzo(b)fluoranthene	14.95	252	297603m	13.33	ng	
88) Benzo(k)fluoranthene	14.96	252	156186m	8.85	ng	
89) Benzo(a)pyrene	15.29	252	255117	13.30	ng	# 87
91) Benzo(a,h,i)perylene	17.11	276	94619	6.19	ng	# 86

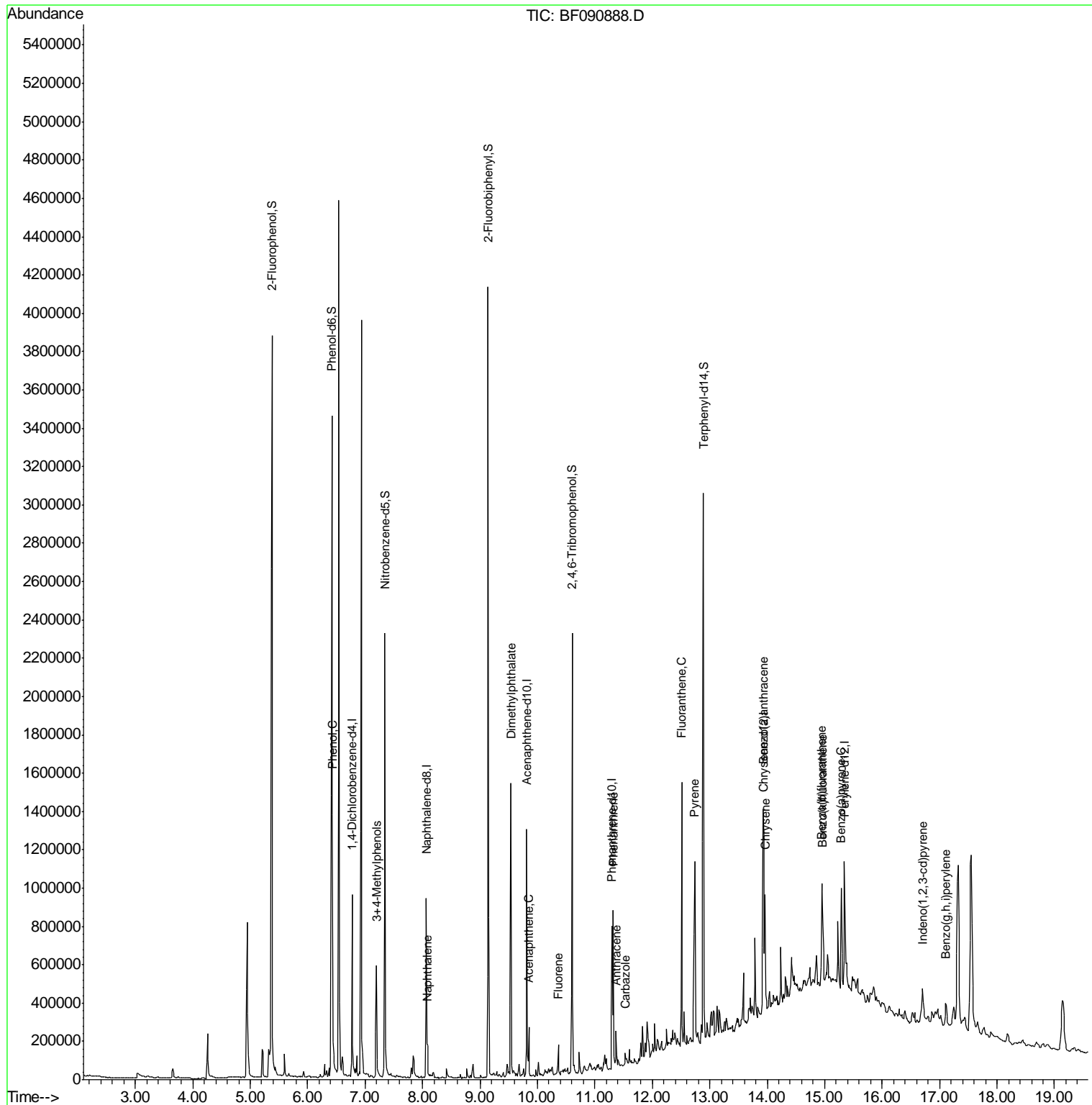
(#) = qualifier out of range (m) = manual integration (+) = signals summed

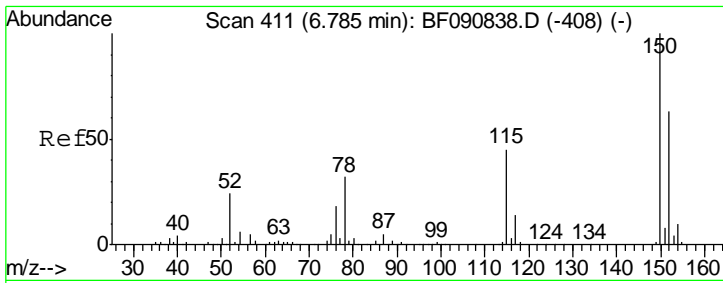
Data Path : Z:\HPCHEM1\BNA F\DATA\BF102716\
 Data File : BF090888.D
 Acq On : 28 Oct 2016 1:08
 Operator : UM/SJ
 Sample : H5423-05
 Misc :
 ALS Vial : 21 Sample Multiplier: 1

Instrument :
 BNA_F
 Client Sampled :
 SB-3COMP(0-16FEET)

Manual Integrations
APPROVED
 sohil
 10/28/2016 5:22:56 PM

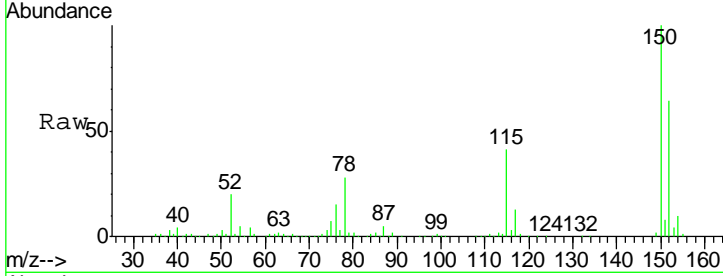
Quant Time: Oct 28 13:21:50 2016
 Quant Method : Z:\HPCHEM1\BNA F\METHODS\8270-BF102616.M
 Quant Title : ASP BNA STANDARDS FOR 5 POINT CALIBRATION
 QLast Update : Thu Oct 27 18:46:43 2016
 Response via : Initial Calibration





#1
 1,4-Dichlorobenzene-d4
 Concen: 20.00 ng
 RT: 6.77 min Scan# 410
 Delta R.T. -0.00 min
 Lab File: BF090888.D
 Acq: 28 Oct 2016 1:08

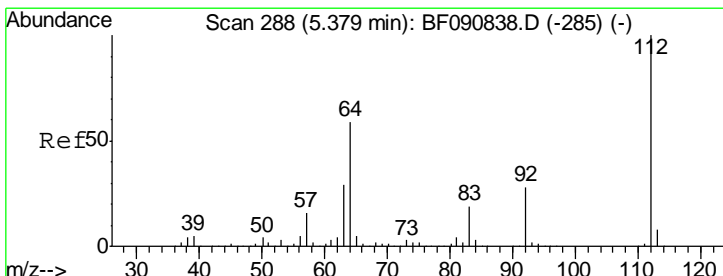
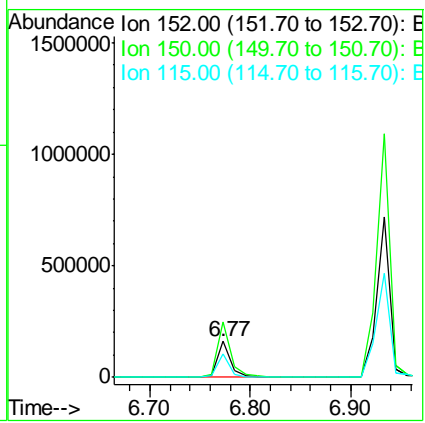
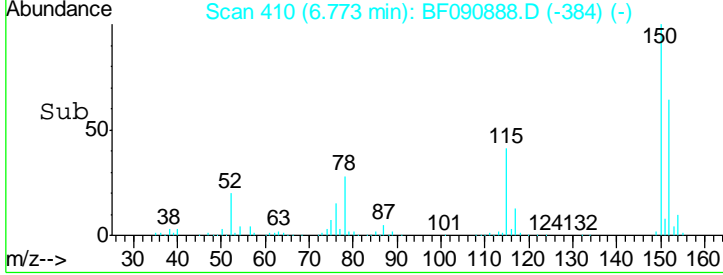
Instrument :
 BNA_F
ClientSampled :
 SB-3COMP(0-16FEET)



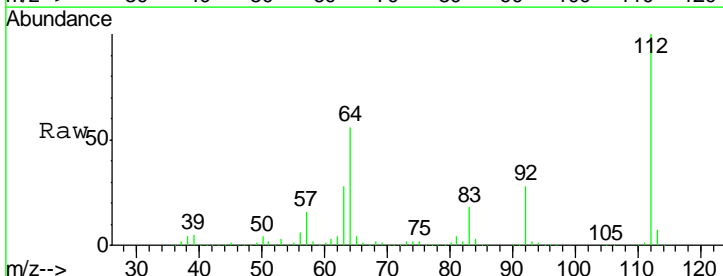
Tgt Ion: 152 Resp: 150157

Ion	Ratio	Lower	Upper
152	100		
150	156.5	124.7	187.1
115	64.5	39.0	58.4#

Manual Integrations
APPROVED
 sohil
 10/28/2016 5:22:56 PM

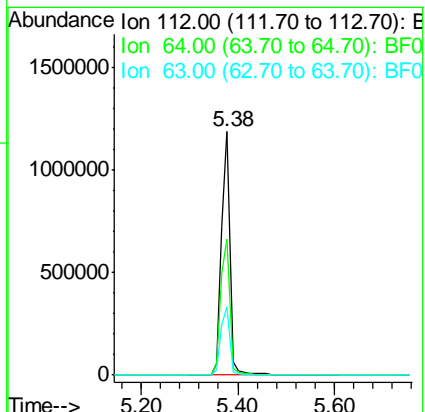
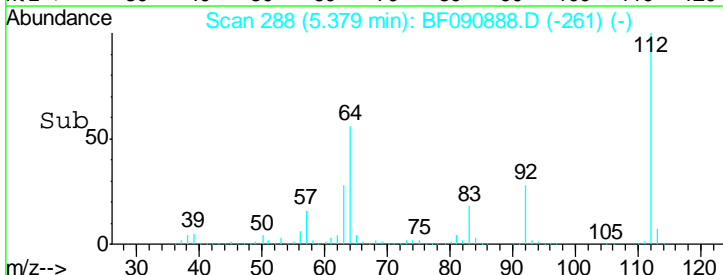


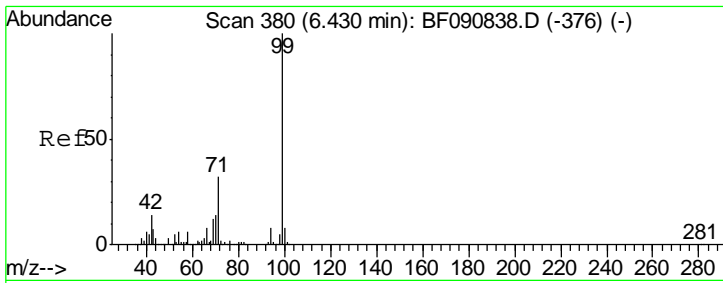
#5
 2-Fluorophenol
 Concen: 170.82 ng
 RT: 5.38 min Scan# 288
 Delta R.T. 0.01 min
 Lab File: BF090888.D
 Acq: 28 Oct 2016 1:08



Tgt Ion: 112 Resp: 1467065

Ion	Ratio	Lower	Upper
112	100		
64	56.0	39.7	59.5
63	28.0	17.4	26.0#





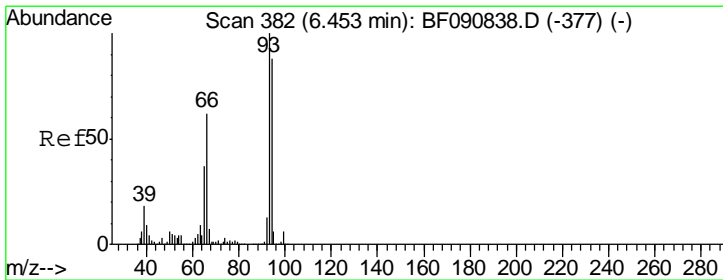
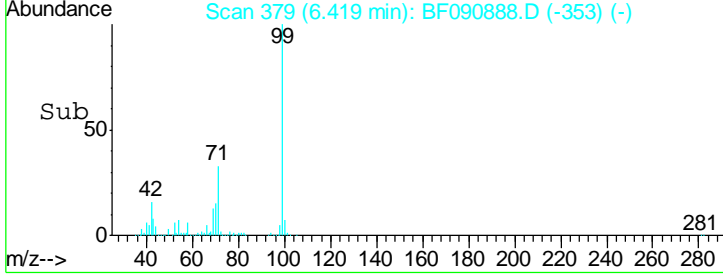
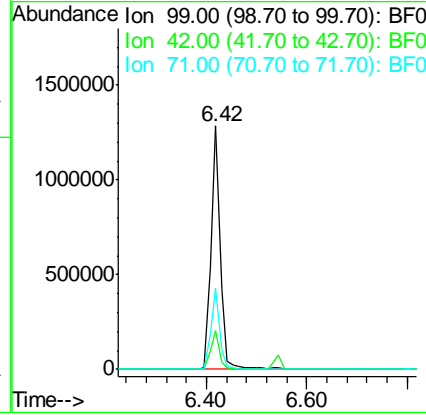
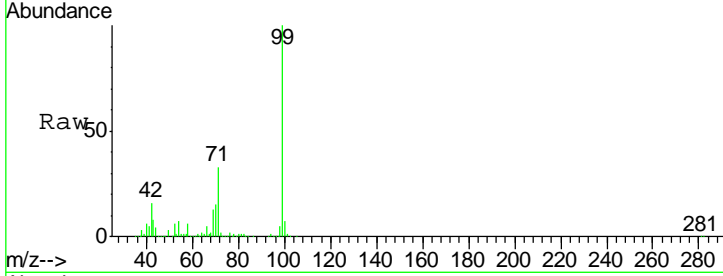
#7
 Phenol-d6
 Concen: 142.99 ng
 RT: 6.42 min Scan# 379
 Delta R.T. -0.00 min
 Lab File: BF090888.D
 Acq: 28 Oct 2016 1:08

Instrument :
 BNA_F
ClientSampled :
 SB-3COMP(0-16FEET)

Tgt Ion	Resp	Lower	Upper
99	100		
42	16.1	13.7	20.5
71	33.4	14.2	21.2#

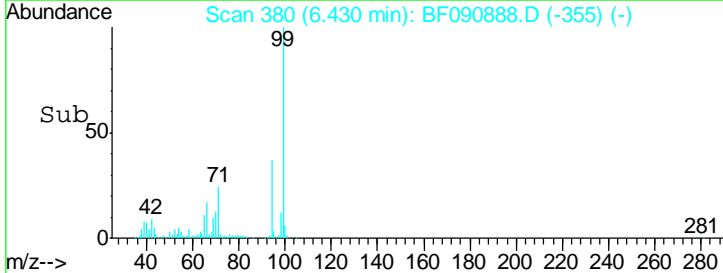
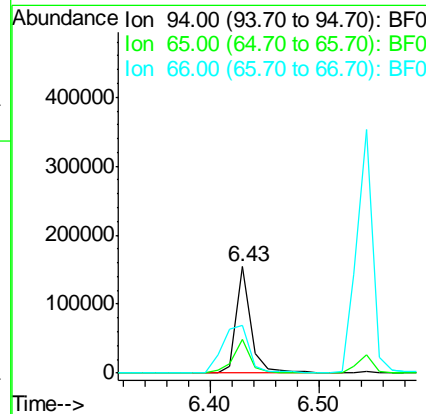
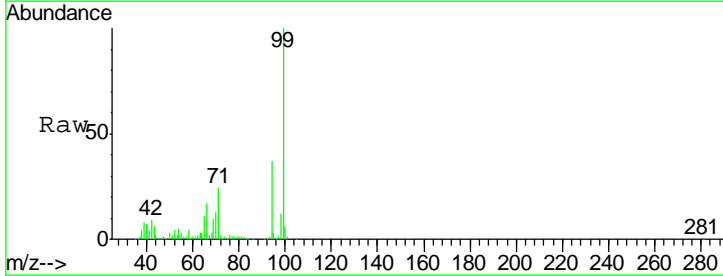
Manual Integrations
APPROVED

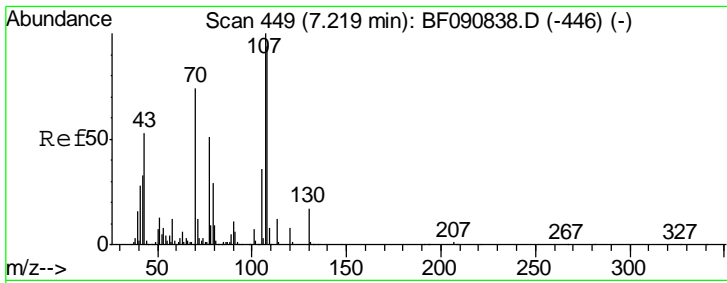
sohil
 10/28/2016 5:22:56 PM



#10
 Phenol
 Concen: 11.32 ng
 RT: 6.43 min Scan# 380
 Delta R.T. -0.01 min
 Lab File: BF090888.D
 Acq: 28 Oct 2016 1:08

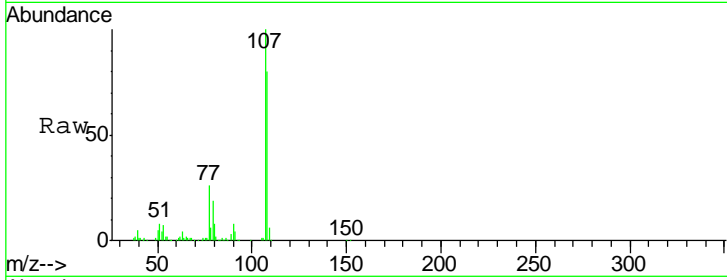
Tgt Ion	Resp	Lower	Upper
94	100		
65	31.1	0.7	40.7
66	45.2	0.8	40.8#





#20
 3+4-Methylphenols
 Concen: 23.66 ng
 RT: 7.20 min Scan# 447
 Delta R.T. -0.01 min
 Lab File: BF090888.D
 Acq: 28 Oct 2016 1:08

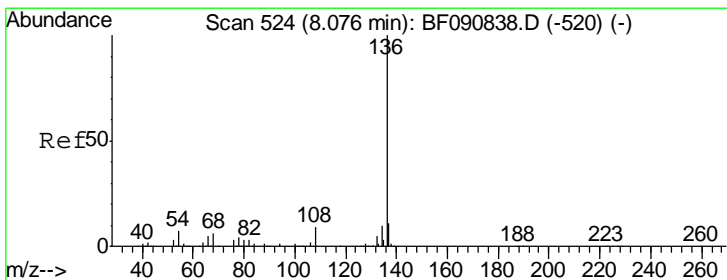
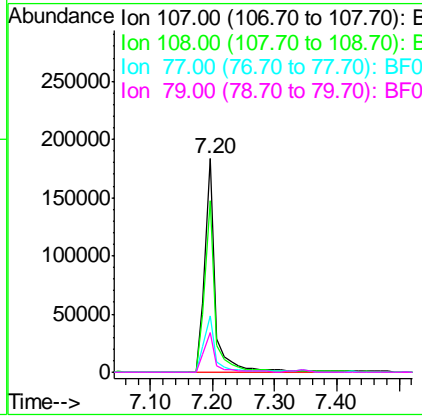
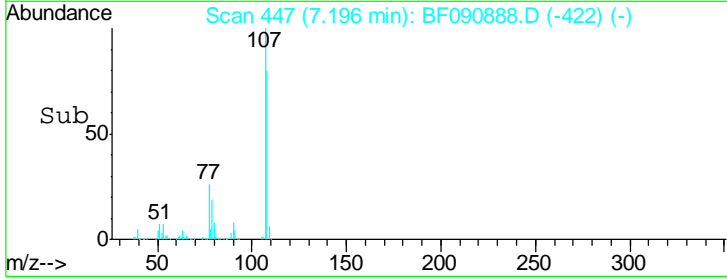
Instrument :
 BNA_F
ClientSampleId :
 SB-3COMP(0-16FEET)



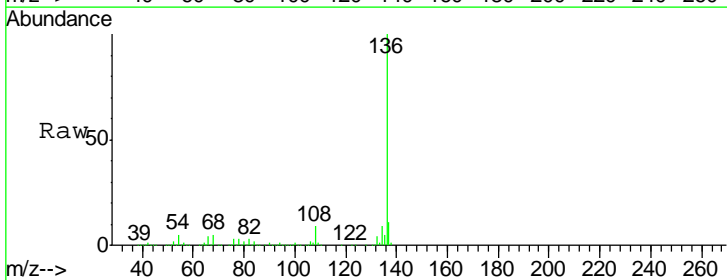
Tgt Ion	Resp	Lower	Upper
107	220733		
107	100		
108	80.4	74.6	114.6
77	26.2	0.7	40.7
79	18.7	0.0	38.9

Manual Integrations
APPROVED

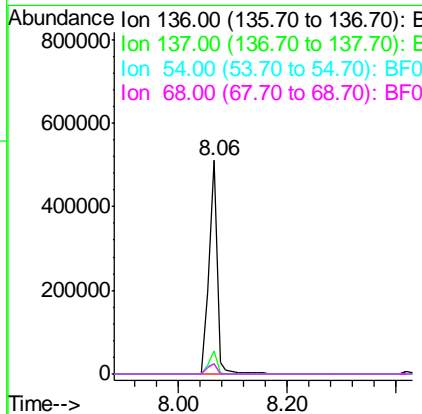
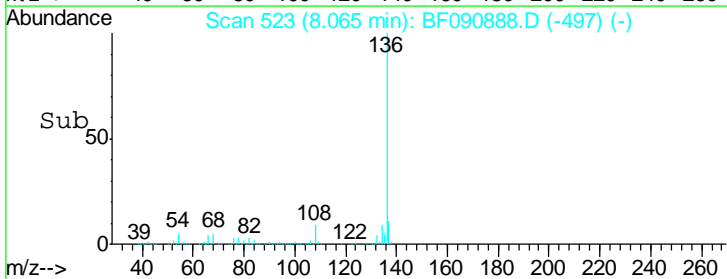
sohil
 10/28/2016 5:22:56 PM

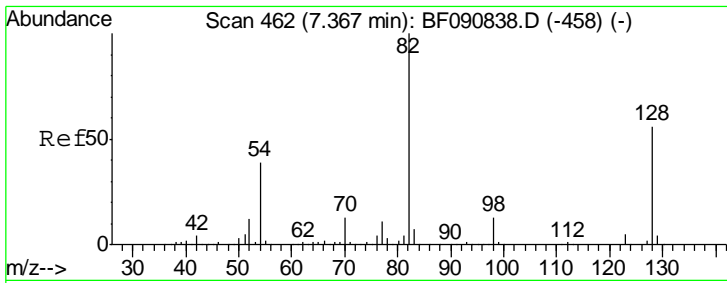


#21
 Naphthalene-d8
 Concen: 20.00 ng
 RT: 8.06 min Scan# 523
 Delta R.T. -0.00 min
 Lab File: BF090888.D
 Acq: 28 Oct 2016 1:08



Tgt Ion	Resp	Lower	Upper
136	532890		
136	100		
137	10.8	9.0	13.6
54	4.9	8.2	12.2#
68	4.9	5.8	8.6#





#23
 Nitrobenzene-d5
 Concen: 113.28 ng
 RT: 7.34 min Scan# 460
 Delta R.T. -0.01 min
 Lab File: BF090888.D
 Acq: 28 Oct 2016 1:08

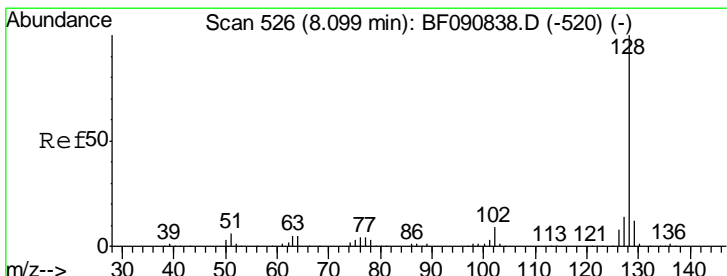
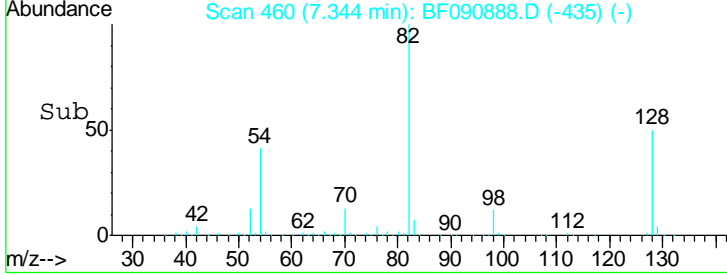
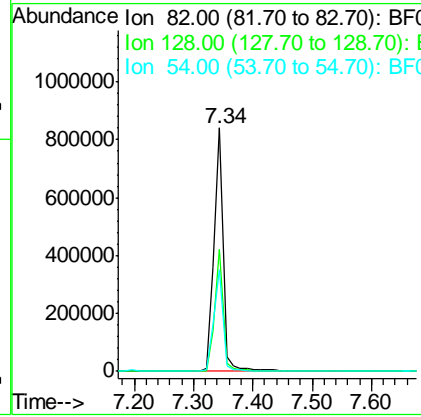
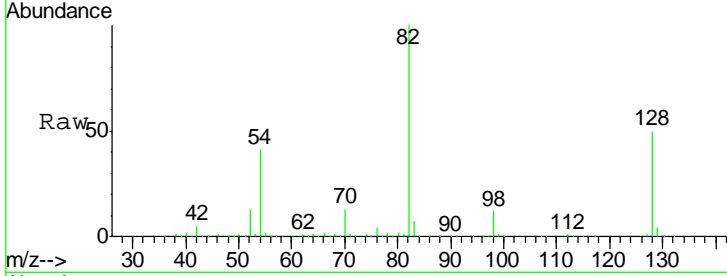
Instrument :
 BNA_F
ClientSampleId :
 SB-3COMP(0-16FEET)

Tgt Ion: 82 Resp: 922156

Ion	Ratio	Lower	Upper
82	100		
128	50.3	51.0	76.6#
54	41.5	47.5	71.3#

Manual Integrations
APPROVED

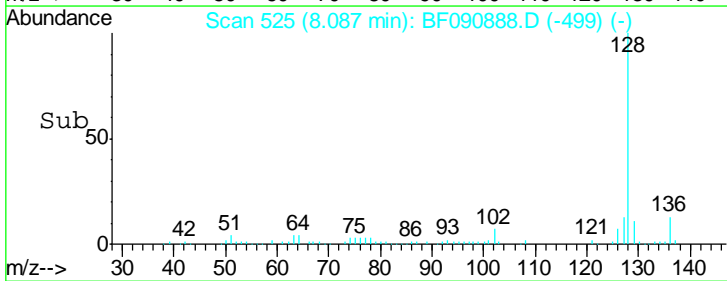
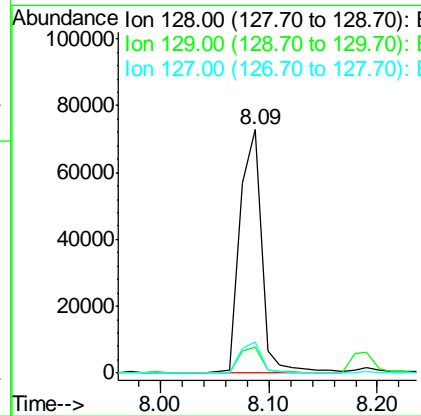
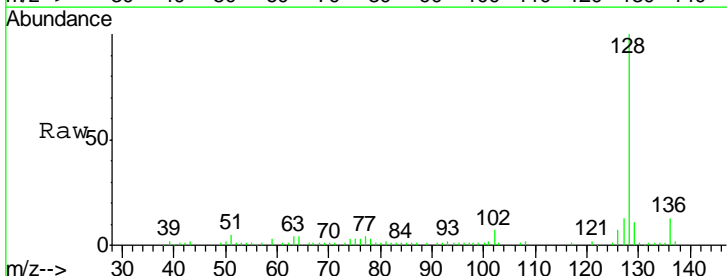
sohil
 10/28/2016 5:22:56 PM

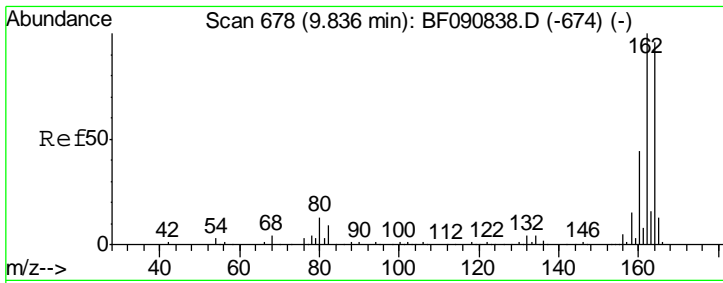


#31
 Naphthalene
 Concen: 3.99 ng
 RT: 8.09 min Scan# 525
 Delta R.T. -0.00 min
 Lab File: BF090888.D
 Acq: 28 Oct 2016 1:08

Tgt Ion: 128 Resp: 99445

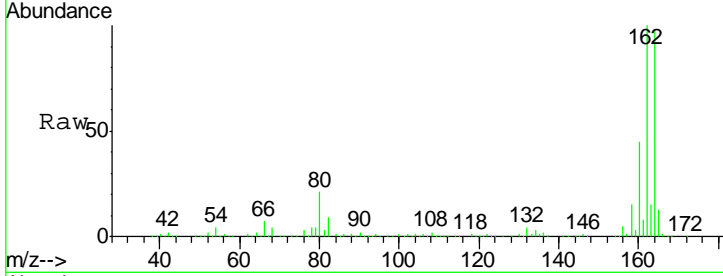
Ion	Ratio	Lower	Upper
128	100		
129	10.5	8.4	12.6
127	12.8	9.9	14.9





#38
 Acenaphthene-d10
 Concen: 20.00 ng
 RT: 9.81 min Scan# 676
 Delta R.T. -0.01 min
 Lab File: BF090888.D
 Acq: 28 Oct 2016 1:08

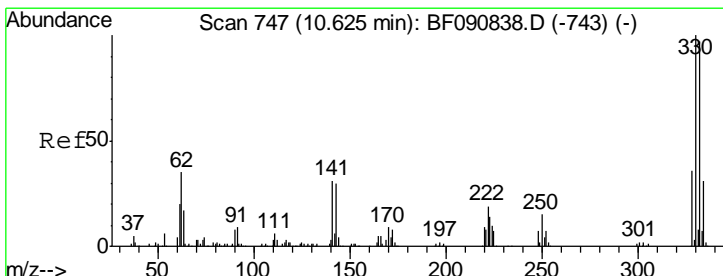
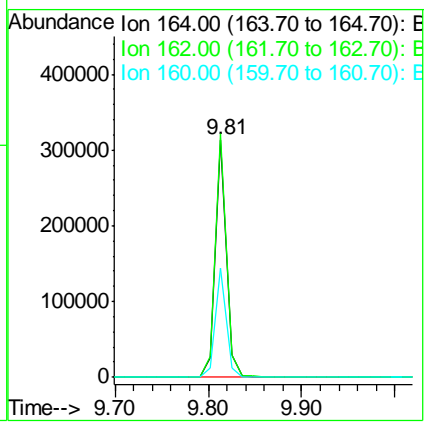
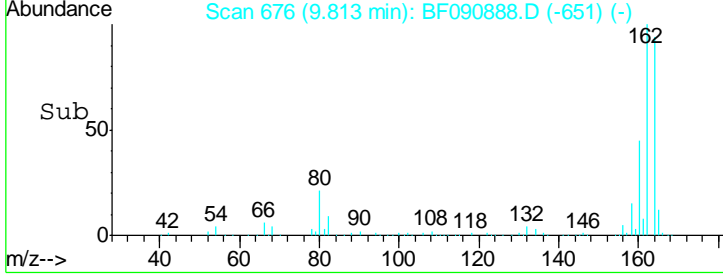
Instrument :
 BNA_F
ClientSampled :
 SB-3COMP(0-16FEET)



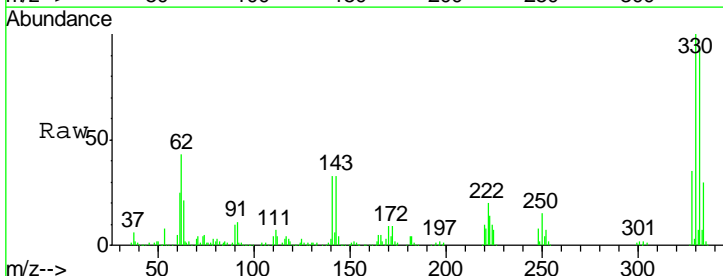
Tgt Ion:164 Resp: 257116

Ion	Ratio	Lower	Upper
164	100		
162	102.4	75.2	112.8
160	45.8	31.5	47.3

Manual Integrations
APPROVED
 sohil
 10/28/2016 5:22:56 PM

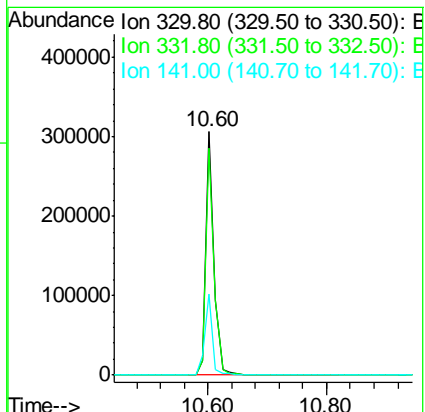
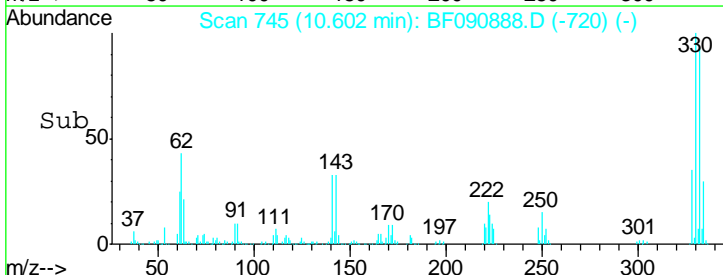


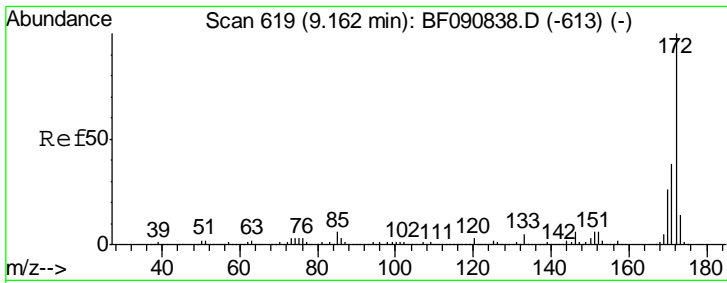
#41
 2,4,6-Tribromophenol
 Concen: 113.93 ng
 RT: 10.60 min Scan# 745
 Delta R.T. -0.01 min
 Lab File: BF090888.D
 Acq: 28 Oct 2016 1:08



Tgt Ion:330 Resp: 301035

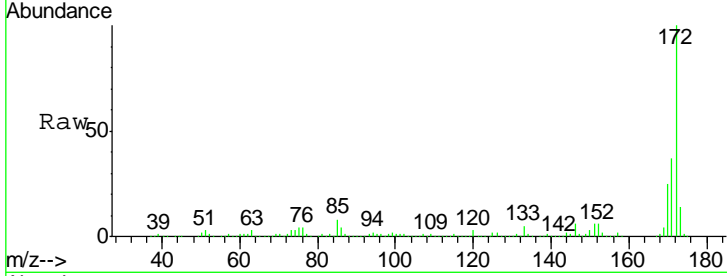
Ion	Ratio	Lower	Upper
330	100		
332	94.6	76.6	114.8
141	32.3	29.7	44.5





#44
 2-Fluorobiphenyl
 Concen: 92.24 ng
 RT: 9.14 min Scan# 617
 Delta R.T. -0.01 min
 Lab File: BF090888.D
 Acq: 28 Oct 2016 1:08

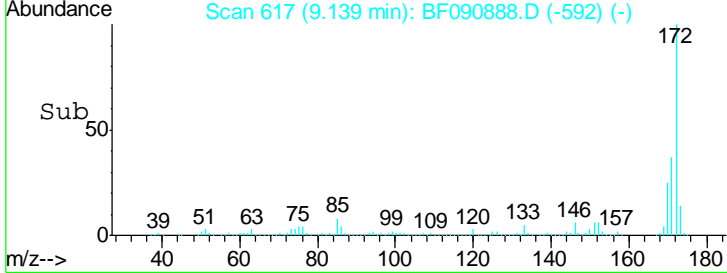
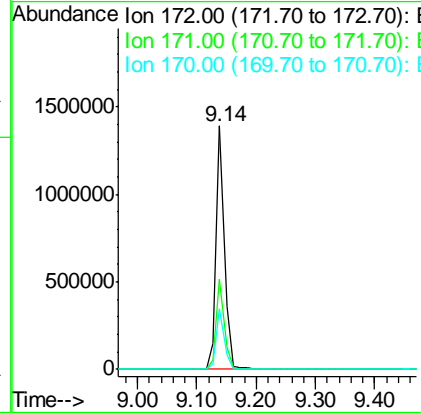
Instrument :
 BNA_F
ClientSampled :
 SB-3COMP(0-16FEET)



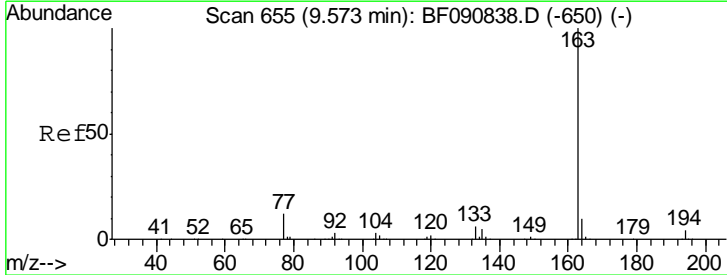
Tgt Ion: 172 Resp: 1350585

Ion	Ratio	Lower	Upper
172	100		
171	37.1	26.1	39.1
170	25.1	17.4	26.2

Manual Integrations
APPROVED
 sohil
 10/28/2016 5:22:56 PM

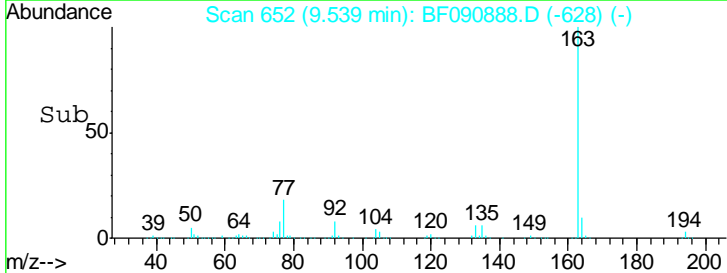
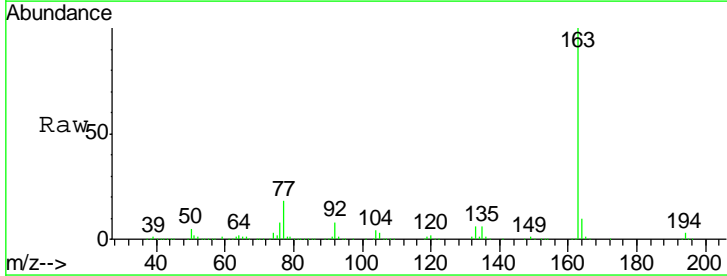
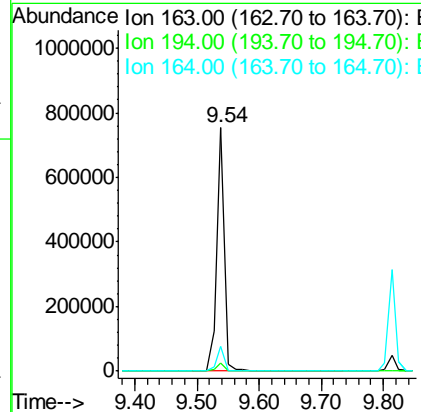


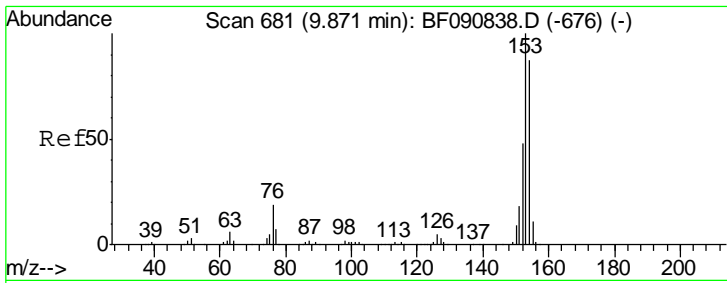
#49
 Dimethylphthalate
 Concen: 36.83 ng
 RT: 9.54 min Scan# 652
 Delta R.T. -0.02 min
 Lab File: BF090888.D
 Acq: 28 Oct 2016 1:08



Tgt Ion: 163 Resp: 632739

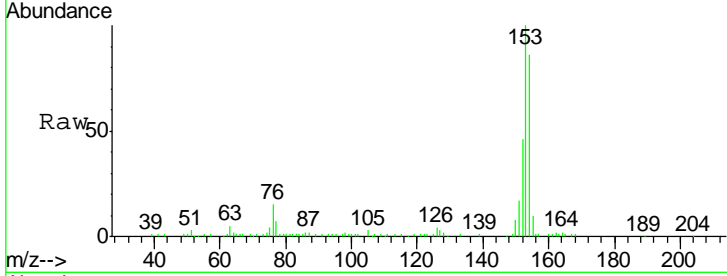
Ion	Ratio	Lower	Upper
163	100		
194	3.4	4.4	6.6#
164	10.0	8.3	12.5





#51
 Acenaphthene
 Concen: 3.82 ng
 RT: 9.85 min Scan# 679
 Delta R.T. -0.01 min
 Lab File: BF090888.D
 Acq: 28 Oct 2016 1:08

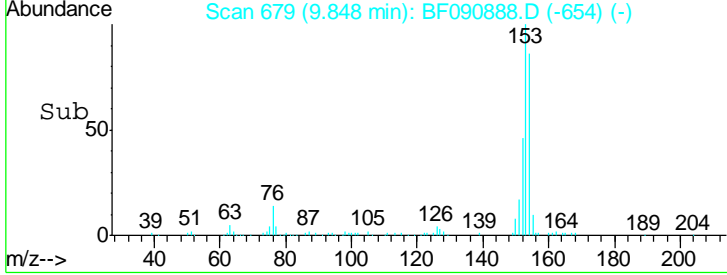
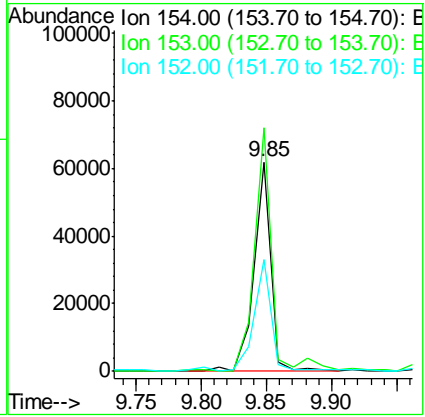
Instrument :
 BNA_F
ClientSampled :
 SB-3COMP(0-16FEET)



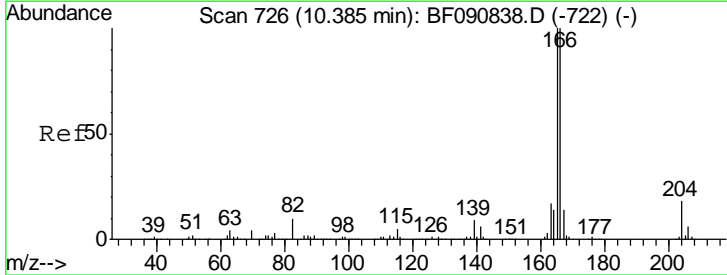
Tgt Ion: 154 Resp: 56163

Ion	Ratio	Lower	Upper
154	100		
153	116.1	82.1	123.1
152	53.4	37.9	56.9

Manual Integrations
APPROVED
 sohil
 10/28/2016 5:22:56 PM

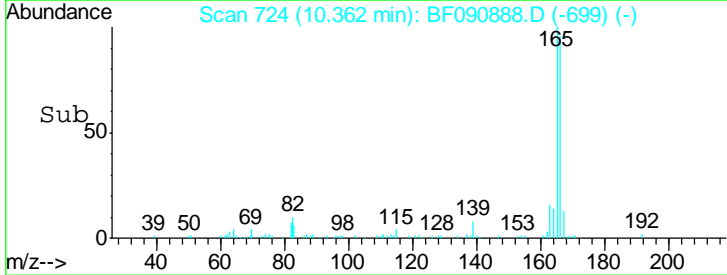
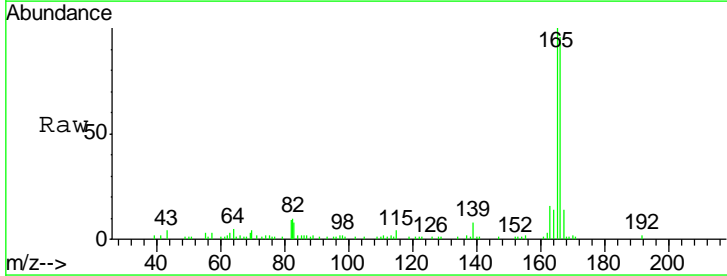
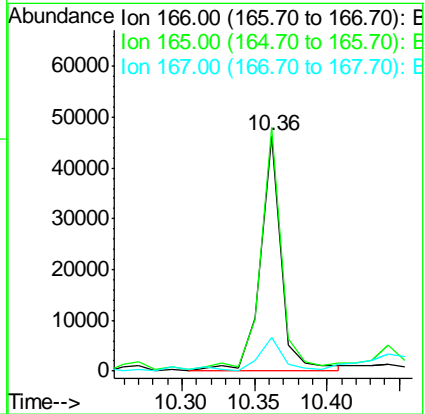


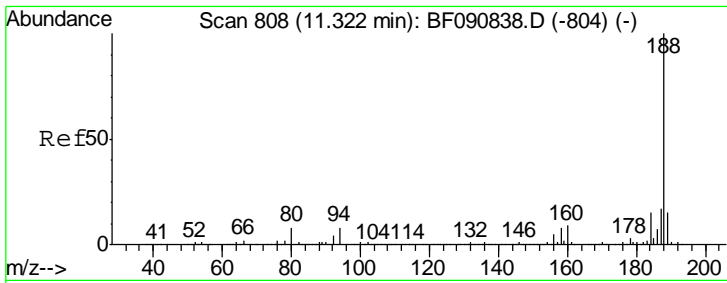
#57
 Fluorene
 Concen: 2.98 ng
 RT: 10.36 min Scan# 724
 Delta R.T. -0.01 min
 Lab File: BF090888.D
 Acq: 28 Oct 2016 1:08



Tgt Ion: 166 Resp: 46273

Ion	Ratio	Lower	Upper
166	100		
165	103.8	72.6	109.0
167	14.4	10.6	16.0





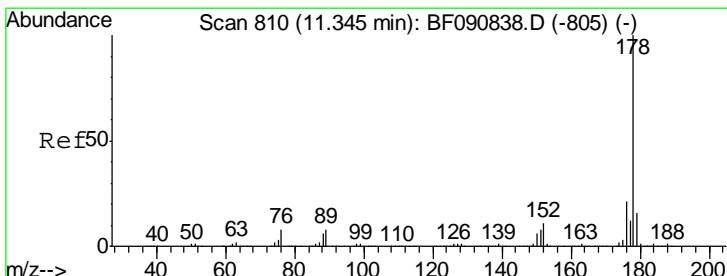
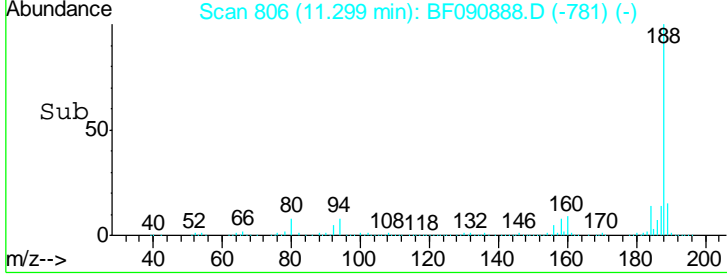
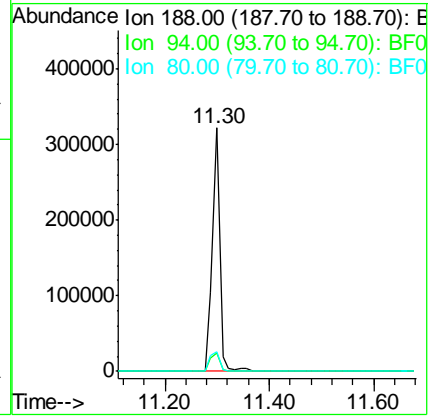
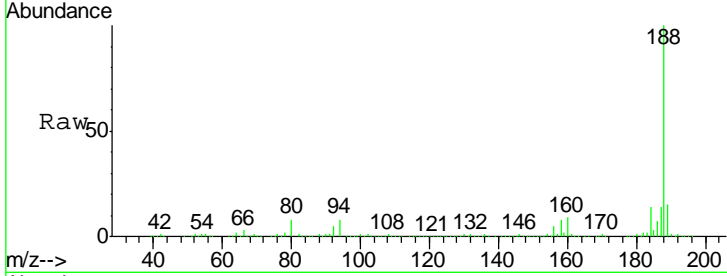
#63
 Phenanthrene-d10
 Concen: 20.00 ng
 RT: 11.30 min Scan# 806
 Delta R.T. -0.01 min
 Lab File: BF090888.D
 Acq: 28 Oct 2016 1:08

Instrument :
 BNA_F
ClientSampled :
 SB-3COMP(0-16FEET)

Tgt Ion	Resp	Lower	Upper
188	100		
94	7.7	11.1	16.7#
80	8.2	11.0	16.4#

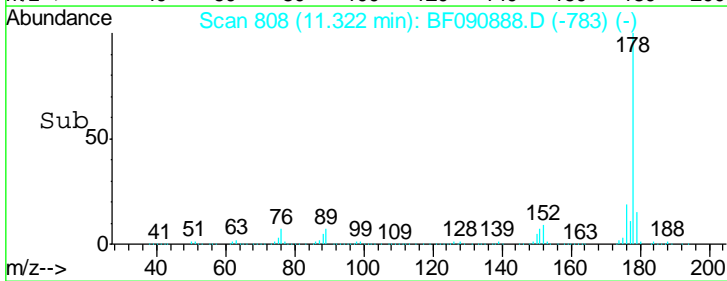
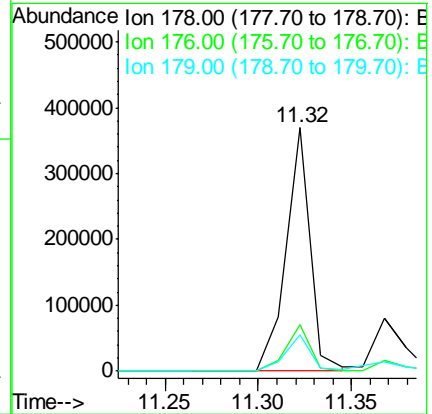
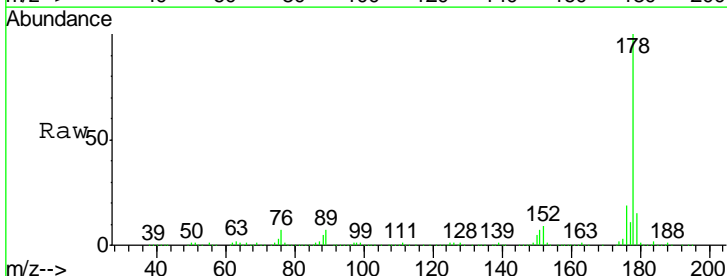
Manual Integrations
APPROVED

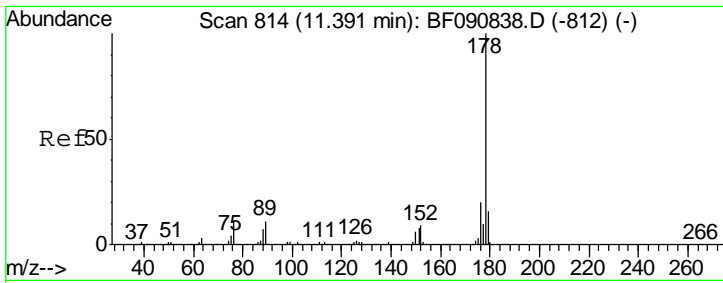
sohil
 10/28/2016 5:22:56 PM



#70
 Phenanthrene
 Concen: 20.22 ng
 RT: 11.32 min Scan# 808
 Delta R.T. -0.01 min
 Lab File: BF090888.D
 Acq: 28 Oct 2016 1:08

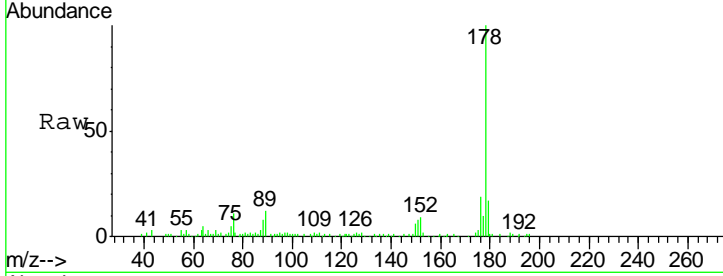
Tgt Ion	Resp	Lower	Upper
178	100		
176	19.2	13.8	20.8
179	15.0	12.2	18.2





#71
 Anthracene
 Concen: 5.52 ng
 RT: 11.37 min Scan# 812
 Delta R.T. -0.01 min
 Lab File: BF090888.D
 Acq: 28 Oct 2016 1:08

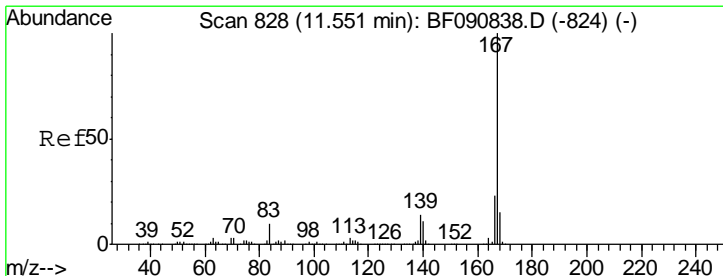
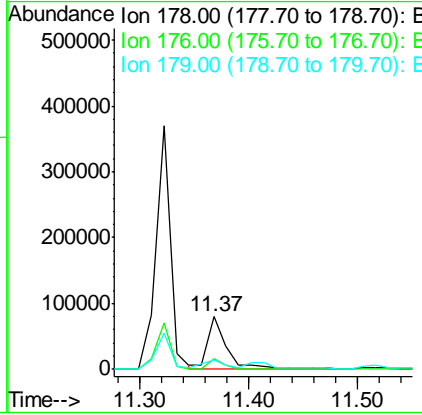
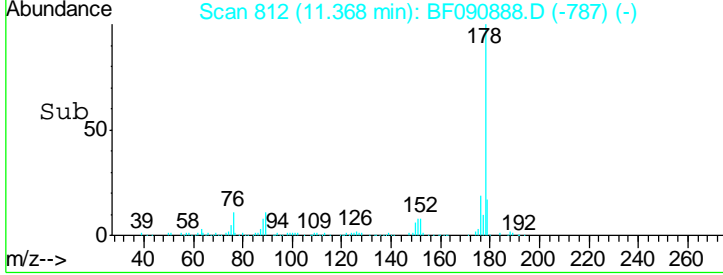
Instrument :
 BNA_F
ClientSampled :
 SB-3COMP(0-16FEET)



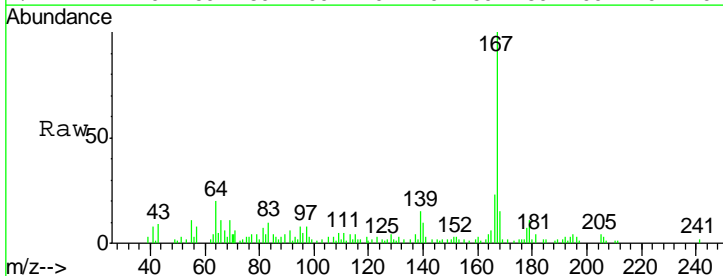
Tgt Ion: 178 Resp: 95345

Ion	Ratio	Lower	Upper
178	100		
176	19.1	14.1	21.1
179	16.9	12.2	18.2

Manual Integrations
APPROVED
 sohil
 10/28/2016 5:22:56 PM

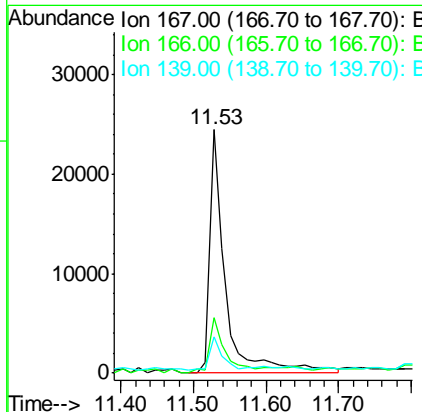
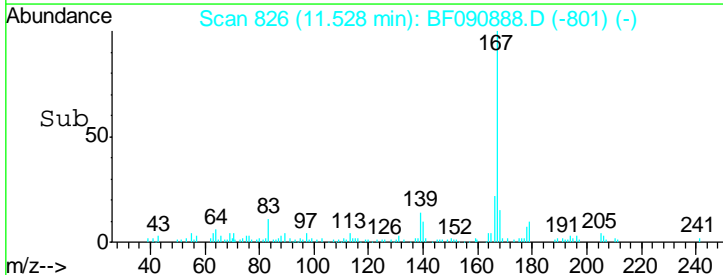


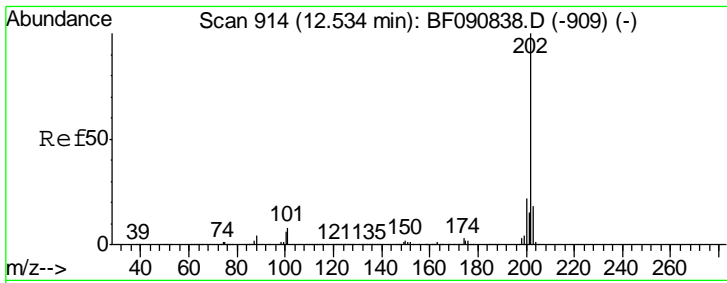
#72
 Carbazole
 Concen: 2.43 ng
 RT: 11.53 min Scan# 826
 Delta R.T. -0.01 min
 Lab File: BF090888.D
 Acq: 28 Oct 2016 1:08



Tgt Ion: 167 Resp: 37020

Ion	Ratio	Lower	Upper
167	100		
166	22.9	15.7	23.5
139	15.0	9.5	14.3#





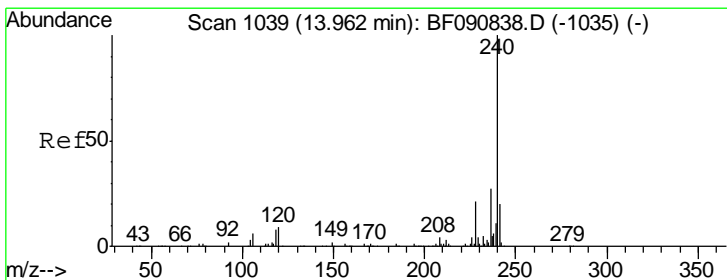
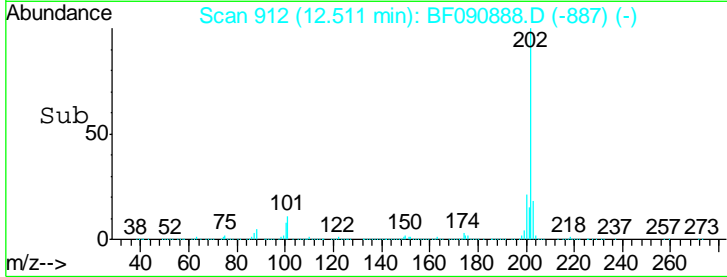
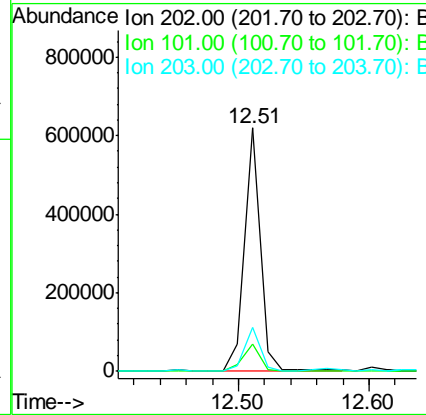
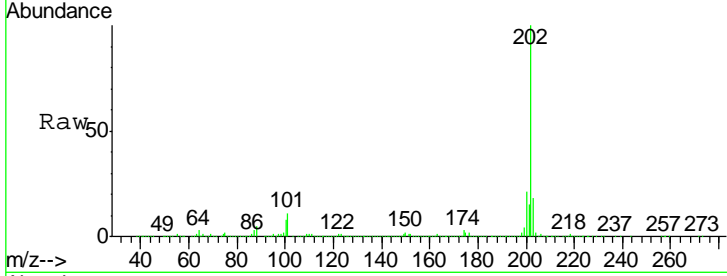
#74
 Fluoranthene
 Concen: 28.67 ng
 RT: 12.51 min Scan# 912
 Delta R.T. -0.01 min
 Lab File: BF090888.D
 Acq: 28 Oct 2016 1:08

Instrument :
 BNA_F
ClientSampled :
 SB-3COMP(0-16FEET)

Tgt Ion	Ratio	Lower	Upper
202	100		
101	11.3	0.0	38.3
203	17.9	0.0	37.3

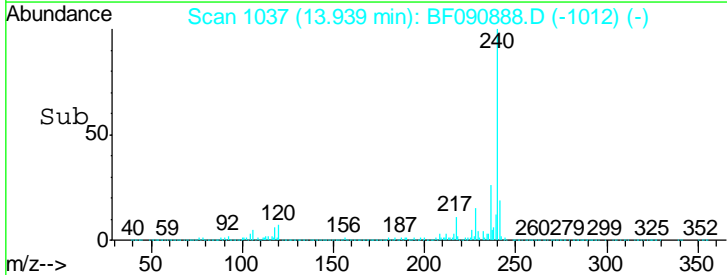
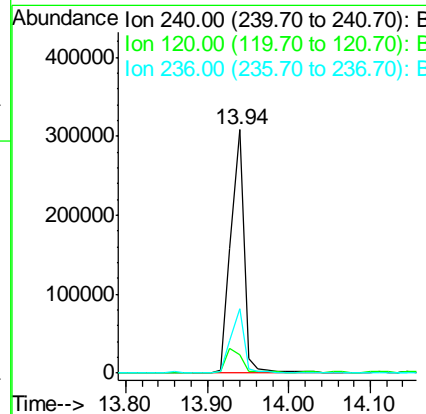
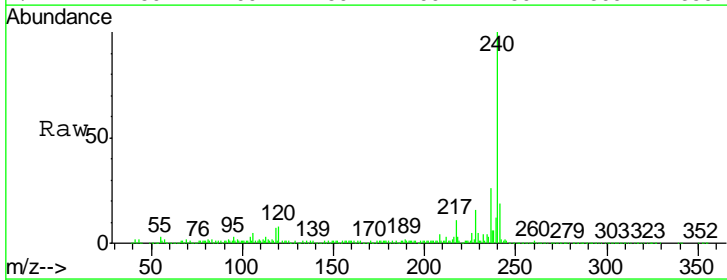
Manual Integrations
APPROVED

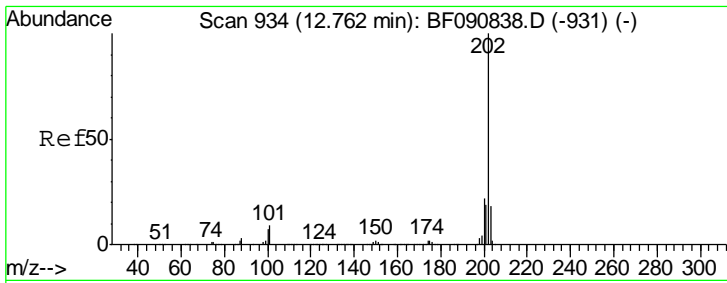
sohil
 10/28/2016 5:22:56 PM



#75
 Chrysene-d12
 Concen: 20.00 ng
 RT: 13.94 min Scan# 1037
 Delta R.T. -0.01 min
 Lab File: BF090888.D
 Acq: 28 Oct 2016 1:08

Tgt Ion	Ratio	Lower	Upper
240	100		
120	7.7	16.2	24.2#
236	26.2	18.4	27.6





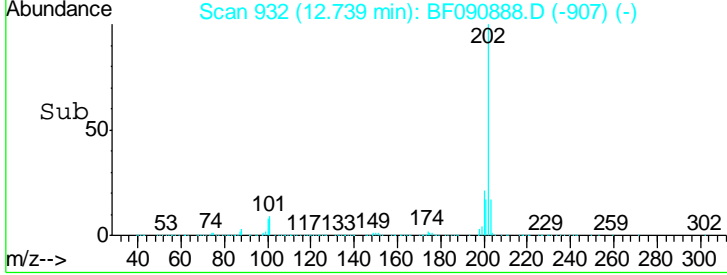
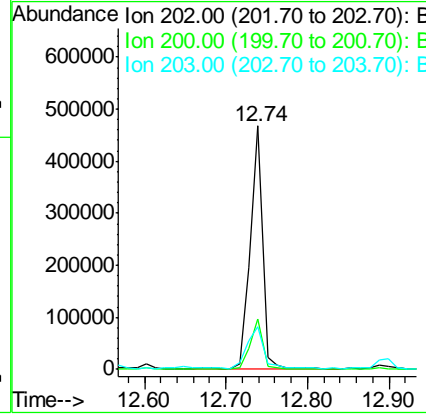
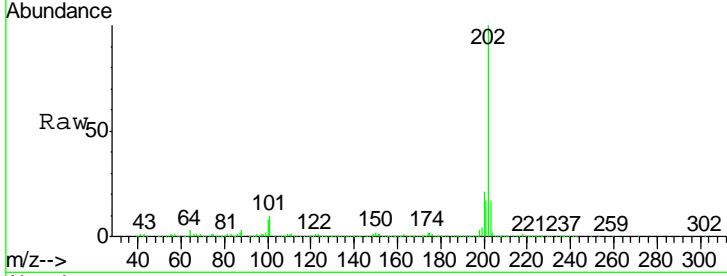
#77
 Pyrene
 Concen: 22.26 ng
 RT: 12.74 min Scan# 932
 Delta R.T. -0.01 min
 Lab File: BF090888.D
 Acq: 28 Oct 2016 1:08

Instrument :
 BNA_F
ClientSampled :
 SB-3COMP(0-16FEET)

Tgt Ion	Resp	Lower	Upper
202	100		
200	20.7	15.0	22.4
203	17.3	14.1	21.1

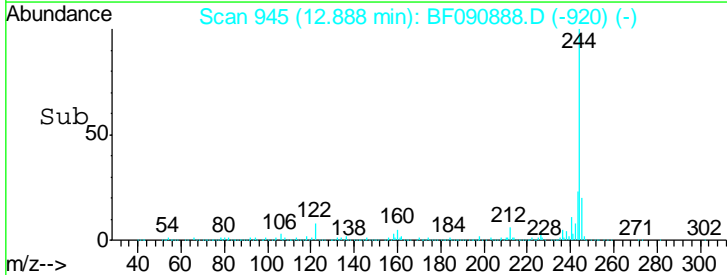
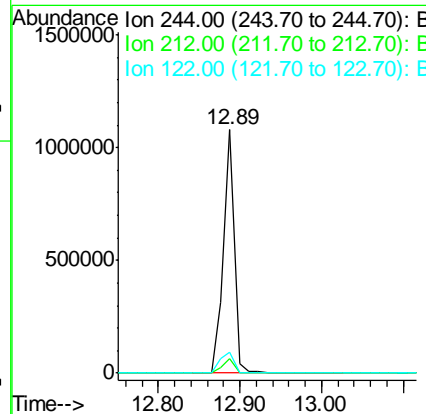
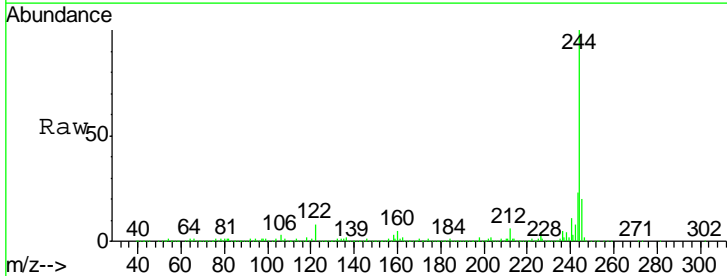
Manual Integrations
APPROVED

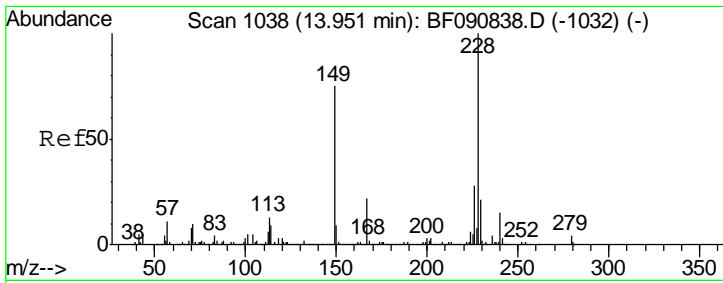
sohil
 10/28/2016 5:22:56 PM



#78
 Terphenyl-d14
 Concen: 73.69 ng
 RT: 12.89 min Scan# 945
 Delta R.T. -0.01 min
 Lab File: BF090888.D
 Acq: 28 Oct 2016 1:08

Tgt Ion	Resp	Lower	Upper
244	100		
212	6.1	4.3	6.5
122	8.4	17.4	26.2#



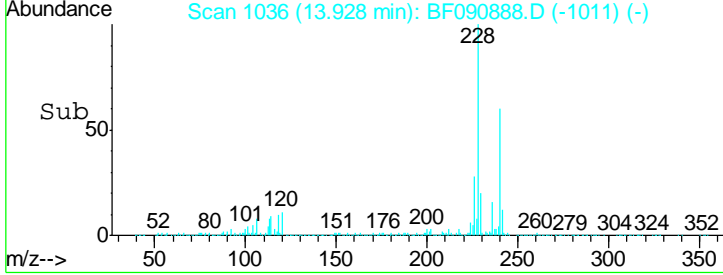
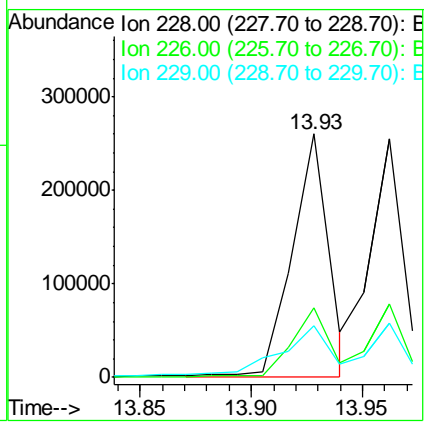
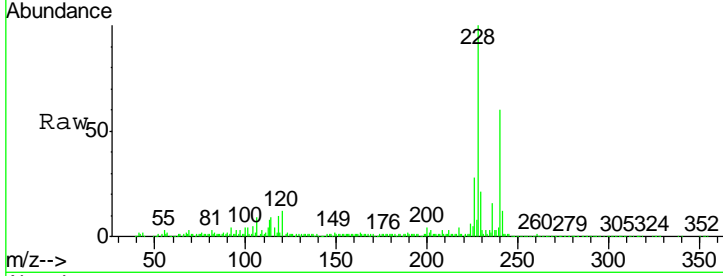


#80
 Benzo(a)anthracene
 Concen: 16.17 ng m
 RT: 13.93 min Scan# 1036
 Delta R.T. -0.01 min
 Lab File: BF090888.D
 Acq: 28 Oct 2016 1:08

Instrument :
 BNA_F
Client Sampled :
 SB-3COMP(0-16FEET)

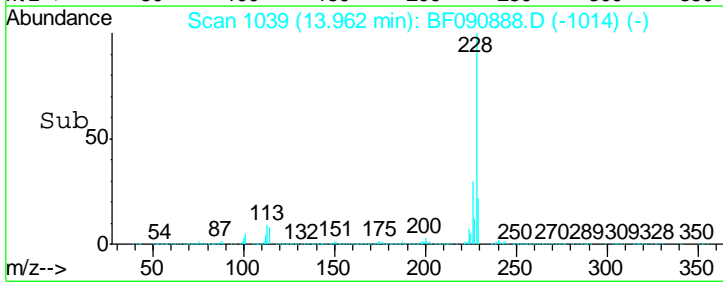
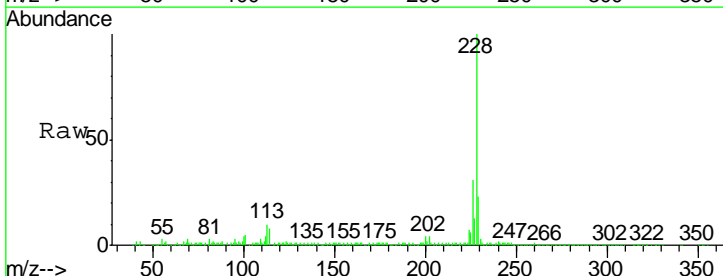
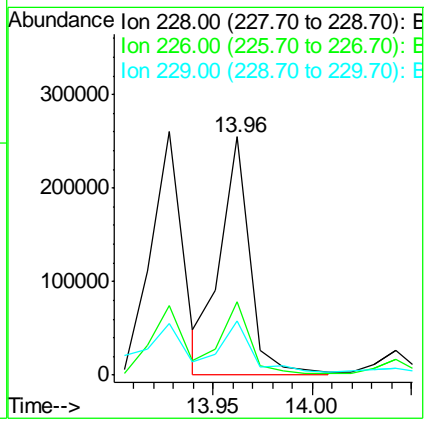
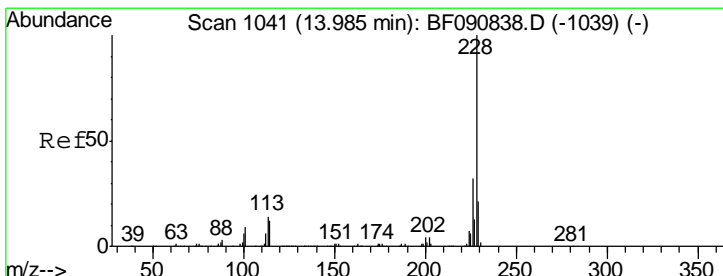
Tgt Ion	Resp	Lower	Upper
228	100		
226	28.4	20.0	30.0
229	21.2	15.4	23.2

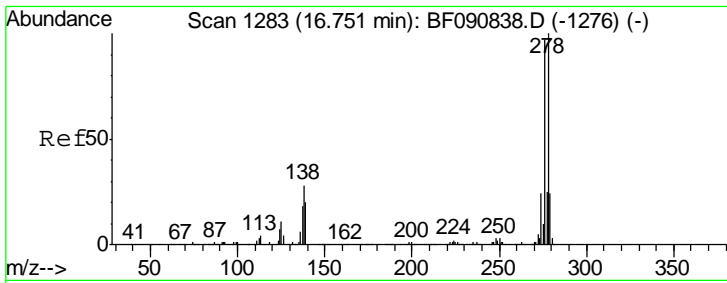
Manual Integrations
APPROVED
 sohil
 10/28/2016 5:22:56 PM



#82
 Chrysene
 Concen: 14.42 ng m
 RT: 13.96 min Scan# 1039
 Delta R.T. -0.01 min
 Lab File: BF090888.D
 Acq: 28 Oct 2016 1:08

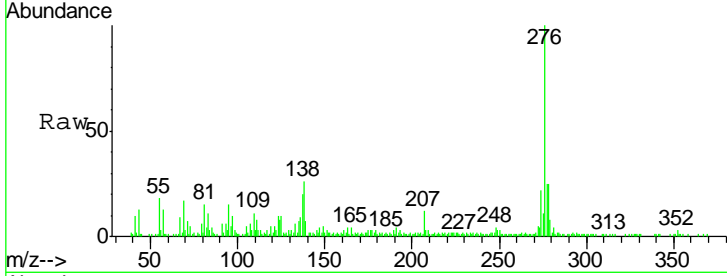
Tgt Ion	Resp	Lower	Upper
228	100		
226	30.6	21.0	31.4
229	22.8	15.6	23.4





#85
 Indeno(1,2,3-cd)pyrene
 Concen: 6.56 ng
 RT: 16.71 min Scan# 1279
 Delta R.T. -0.01 min
 Lab File: BF090888.D
 Acq: 28 Oct 2016 1:08

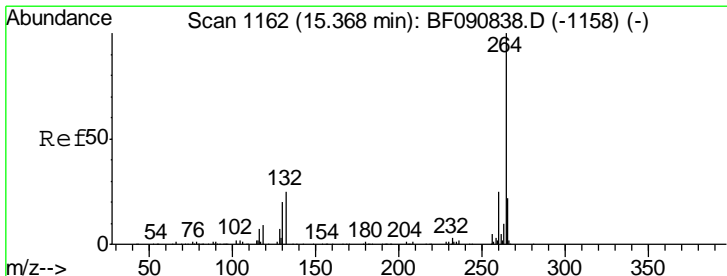
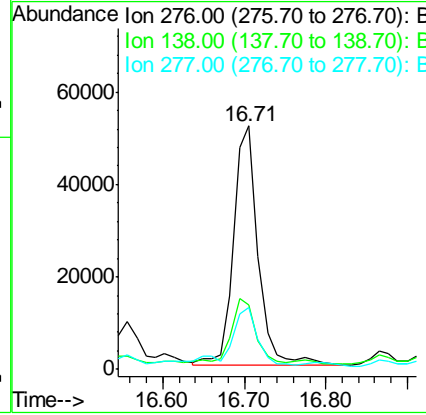
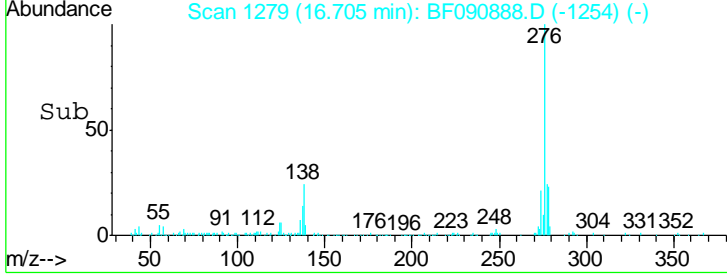
Instrument :
 BNA_F
ClientSampleId :
 SB-3COMP(0-16FEET)



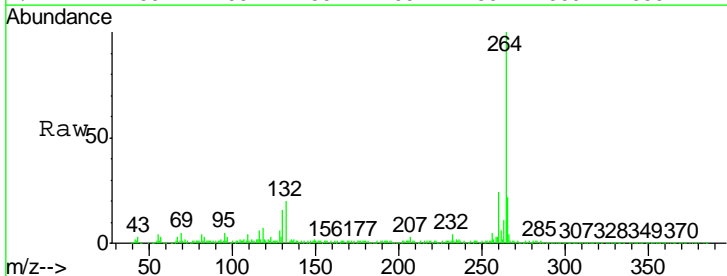
Tgt Ion	Resp	Lower	Upper
276	100		
138	27.0	25.7	38.5
277	26.2	15.6	23.4

Manual Integrations
APPROVED

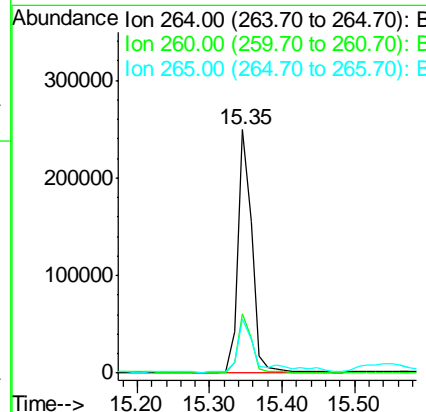
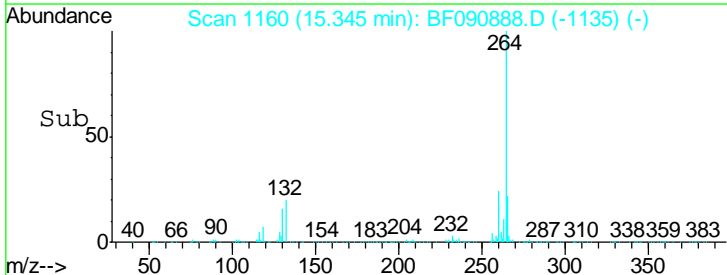
sohil
 10/28/2016 5:22:56 PM

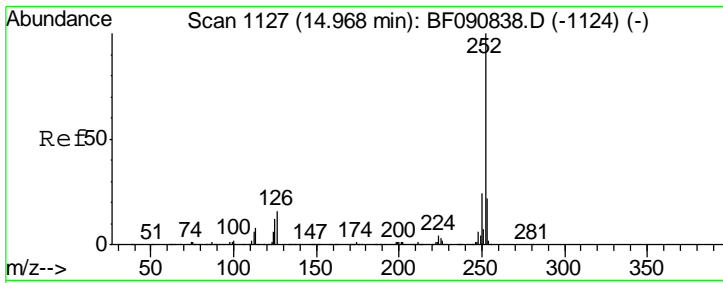


#86
 Perylene-d12
 Concen: 20.00 ng
 RT: 15.35 min Scan# 1160
 Delta R.T. -0.01 min
 Lab File: BF090888.D
 Acq: 28 Oct 2016 1:08



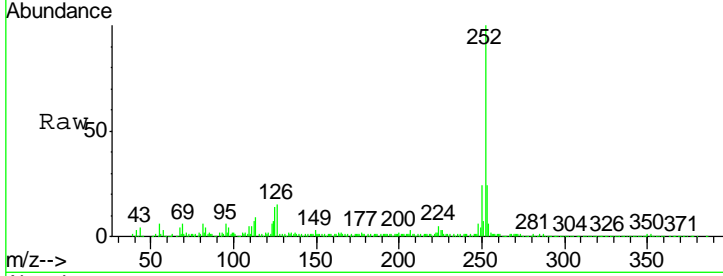
Tgt Ion	Resp	Lower	Upper
264	100		
260	24.3	16.7	25.1
265	22.5	17.2	25.8





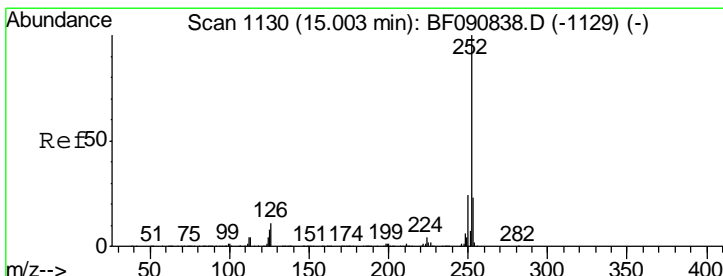
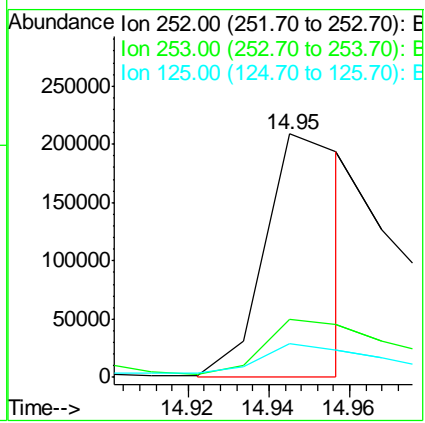
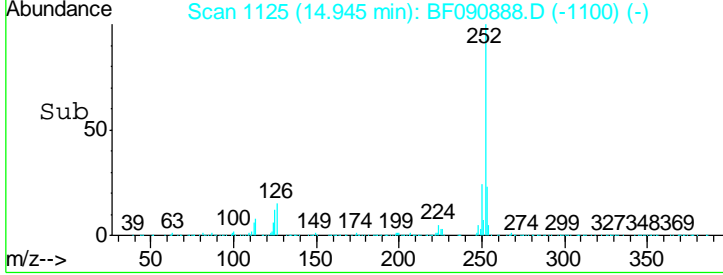
#87
 Benzo(b)fluoranthene
 Concen: 13.33 ng m
 RT: 14.95 min Scan# 1125
 Delta R.T. -0.01 min
 Lab File: BF090888.D
 Acq: 28 Oct 2016 1:08

Instrument :
 BNA_F
ClientSampled :
 SB-3COMP(0-16FEET)

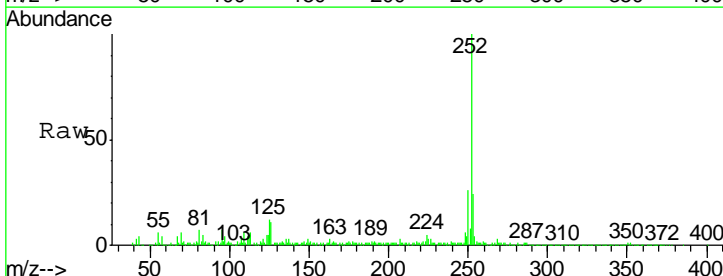


Tgt Ion	Resp	Lower	Upper
252	100		
253	23.8	17.5	26.3
125	13.6	17.1	25.7#

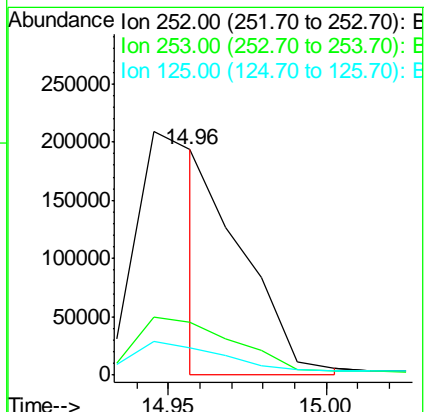
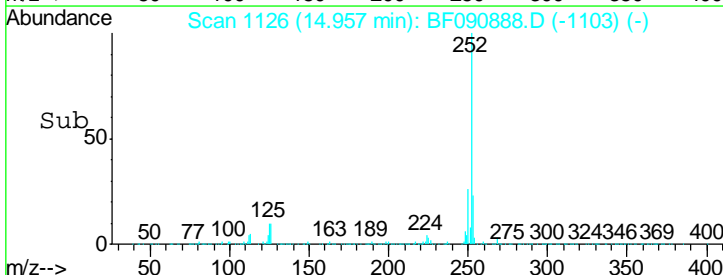
Manual Integrations
APPROVED
 sohil
 10/28/2016 5:22:56 PM

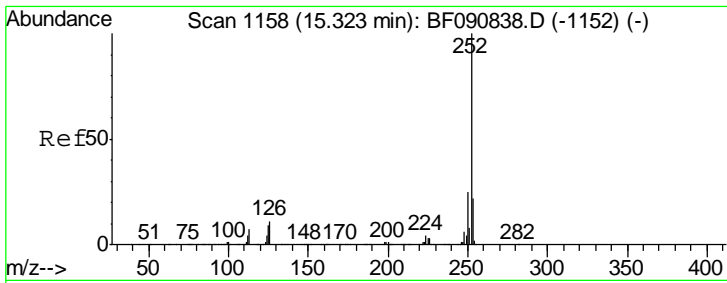


#88
 Benzo(k)fluoranthene
 Concen: 8.85 ng m
 RT: 14.96 min Scan# 1126
 Delta R.T. -0.03 min
 Lab File: BF090888.D
 Acq: 28 Oct 2016 1:08



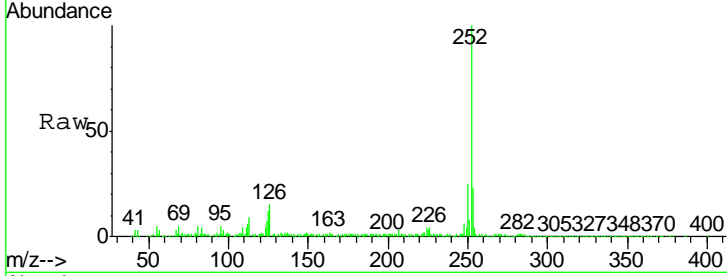
Tgt Ion	Resp	Lower	Upper
252	100		
253	23.6	17.0	25.4
125	11.9	16.0	24.0#





#89
 Benzo(a)pyrene
 Concen: 13.30 ng
 RT: 15.29 min Scan# 1155
 Delta R.T. -0.01 min
 Lab File: BF090888.D
 Acq: 28 Oct 2016 1:08

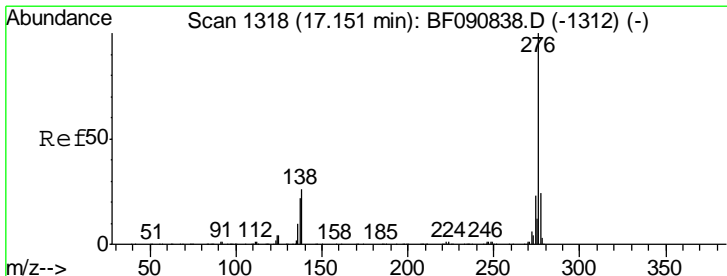
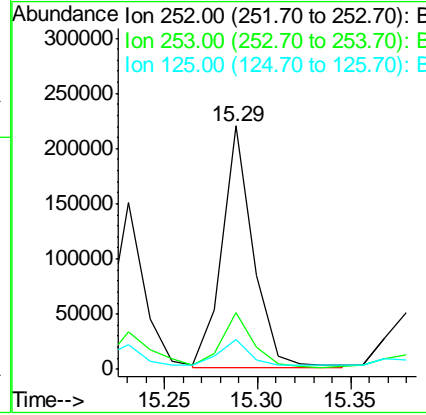
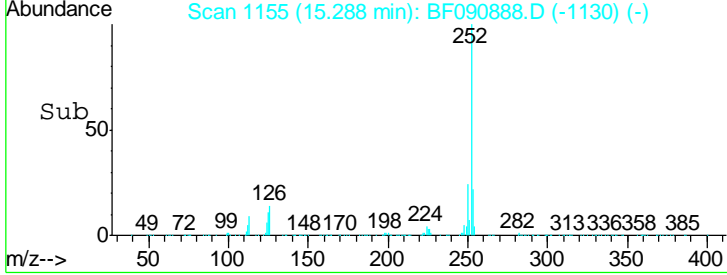
Instrument :
 BNA_F
Client Sampled :
 SB-3COMP(0-16FEET)



Tgt Ion	Ratio	Lower	Upper
252	100		
253	23.5	17.2	25.8
125	12.3	18.0	27.0#

Manual Integrations
APPROVED

sohil
 10/28/2016 5:22:56 PM



#91
 Benzo(g,h,i)perylene
 Concen: 6.19 ng
 RT: 17.11 min Scan# 1314
 Delta R.T. -0.02 min
 Lab File: BF090888.D
 Acq: 28 Oct 2016 1:08

Tgt Ion	Ratio	Lower	Upper
276	100		
277	24.5	17.8	26.6
138	30.8	34.6	51.8#

