

Data Path : Z:\HPCHEM1\BNA_F\DATA\BF102816\
 Data File : BF090905.D
 Acq On : 28 Oct 2016 13:00
 Operator : UM/SJ
 Sample : H5411-07 10X
 Misc :
 ALS Vial : 8 Sample Multiplier: 1

Instrument :
 BNA_F
 ClientSampleId :
 SB-03-3.5-4.0

Integration Parameters: rteint.p
 Integrator: RTE
 Smoothing : ON
 Sampling : 1
 Start Thrs: 0.2
 Stop Thrs : 0

Filtering: 5
 Min Area: 3 % of largest Peak
 Max Peaks: 100
 Peak Location: TOP

If leading or trailing edge < 100 prefer < Baseline drop else tangent >
 Peak separation: 5

Method : Z:\HPCHEM1\BNA_F\METHODS\8270-BF102616.M
 Title : ASP BNA STANDARDS FOR 5 POINT CALIBRATION

Signal : TIC

peak #	R.T. min	first scan	max scan	last scan	PK TY	peak height	corr. area	corr. % max.	% of total
1	4.361	197	199	204	rVB	74763	95366	5.29%	0.758%
2	4.899	244	246	254	rVB	76364	92197	5.12%	0.732%
3	5.344	283	285	297	rVB	167154	191816	10.64%	1.524%
4	6.396	375	377	384	rBV	217360	277726	15.41%	2.206%
5	6.522	386	388	394	rVV	273521	287617	15.96%	2.285%
6	6.762	407	409	411	rBV	1034355	1046694	58.08%	8.315%
7	6.910	420	422	425	rBV	223293	234041	12.99%	1.859%
8	7.322	457	458	461	rBV	111193	138397	7.68%	1.099%
9	8.053	519	522	524	rBV	1114987	1545198	85.74%	12.275%
10	8.762	582	584	590	rVB	37412	37263	2.07%	0.296%
11	8.865	590	593	596	rBV	25192	34067	1.89%	0.271%
12	9.128	613	616	618	rBV	322308	306882	17.03%	2.438%
13	9.219	621	624	628	rBV2	20795	35587	1.97%	0.283%
14	9.390	636	639	641	rBV2	14046	20890	1.16%	0.166%
15	9.459	643	645	647	rBV	25431	32254	1.79%	0.256%
16	9.528	649	651	654	rVB	75334	107772	5.98%	0.856%
17	9.710	665	667	669	rBV	14951	21943	1.22%	0.174%
18	9.745	669	670	672	rVB	35123	25292	1.40%	0.201%
19	9.802	672	675	677	rBV	2125382	1802191	100.00%	14.317%
20	9.836	677	678	683	rVB	69886	65714	3.65%	0.522%
21	10.008	691	693	694	rBV	38154	34577	1.92%	0.275%
22	10.042	694	696	700	rVB3	10460	21819	1.21%	0.173%
23	10.236	708	713	715	rBV2	21924	53033	2.94%	0.421%
24	10.351	721	723	726	rBV	42521	49537	2.75%	0.394%
25	10.591	742	744	746	rBV	55160	66422	3.69%	0.528%
26	10.716	753	755	759	rBV	46895	62256	3.45%	0.495%
27	11.162	793	794	795	rBV	34846	28077	1.56%	0.223%
28	11.185	795	796	800	rVB2	17649	25819	1.43%	0.205%
29	11.288	802	805	809	rBV2	1259459	1687401	93.63%	13.405%
30	11.356	809	811	817	rVB	56990	79419	4.41%	0.631%
31	11.516	823	825	830	rBV2	15539	37701	2.09%	0.300%
32	11.585	830	831	838	rVB	27233	40295	2.24%	0.320%
33	11.791	847	849	850	rBV	17869	25423	1.41%	0.202%
34	11.814	850	851	853	rVV	29470	28204	1.56%	0.224%

Data Path : Z:\HPCHEM1\BNA_F\DATA\BF102816\
 Data File : BF090905.D
 Acq On : 28 Oct 2016 13:00
 Operator : UM/SJ
 Sample : H5411-07 10X
 Misc :
 ALS Vial : 8 Sample Multiplier: 1

Instrument :
 BNA_F
 ClientSampleId :
 SB-03-3.5-4.0

Integration Parameters: rteint.p
 Integrator: RTE
 Smoothing : ON
 Sampling : 1
 Start Thrs: 0.2
 Stop Thrs : 0

Filtering: 5
 Min Area: 3 % of largest Peak
 Max Peaks: 100
 Peak Location: TOP

If leading or trailing edge < 100 prefer < Baseline drop else tangent >
 Peak separation: 5

Method : Z:\HPCHEM1\BNA_F\METHODS\8270-BF102616.M
 Title : ASP BNA STANDARDS FOR 5 POINT CALIBRATION

35	11.894	856	858	864	rVB	42874	66138	3.67%	0.525%
36	12.088	872	875	879	rVB2	10052	20651	1.15%	0.164%
37	12.385	898	901	903	rVB2	21090	26688	1.48%	0.212%
38	12.488	908	910	913	rBV	176550	221587	12.30%	1.760%
39	12.716	927	930	932	rBV	168873	205804	11.42%	1.635%
40	12.751	932	933	939	rVB3	16288	30303	1.68%	0.241%
41	12.865	941	943	947	rVB	184798	206009	11.43%	1.637%
42	13.048	957	959	961	rVB	30273	37353	2.07%	0.297%
43	13.117	963	965	966	rVV	41742	38253	2.12%	0.304%
44	13.151	966	968	972	rVV3	18641	31458	1.75%	0.250%
45	13.459	992	995	996	rBV	18650	28136	1.56%	0.224%
46	13.665	1011	1013	1015	rBV2	15334	28413	1.58%	0.226%
47	13.734	1017	1019	1021	rVV2	34393	47403	2.63%	0.377%
48	13.779	1021	1023	1027	rVB3	28877	59803	3.32%	0.475%
49	13.917	1033	1035	1042	rBV	1020859	1270289	70.49%	10.091%
50	14.099	1049	1051	1053	rBV	34793	42109	2.34%	0.335%
51	14.408	1076	1078	1079	rBV	34889	44264	2.46%	0.352%
52	14.934	1121	1124	1128	rBV	68921	136229	7.56%	1.082%
53	15.208	1146	1148	1151	rVB	38594	53836	2.99%	0.428%
54	15.265	1151	1153	1156	rBV	53624	75042	4.16%	0.596%
55	15.334	1156	1159	1161	rVV	843819	1163850	64.58%	9.246%
56	15.368	1161	1162	1164	rVB	42804	46123	2.56%	0.366%
57	15.768	1195	1197	1199	rBV	44135	69101	3.83%	0.549%

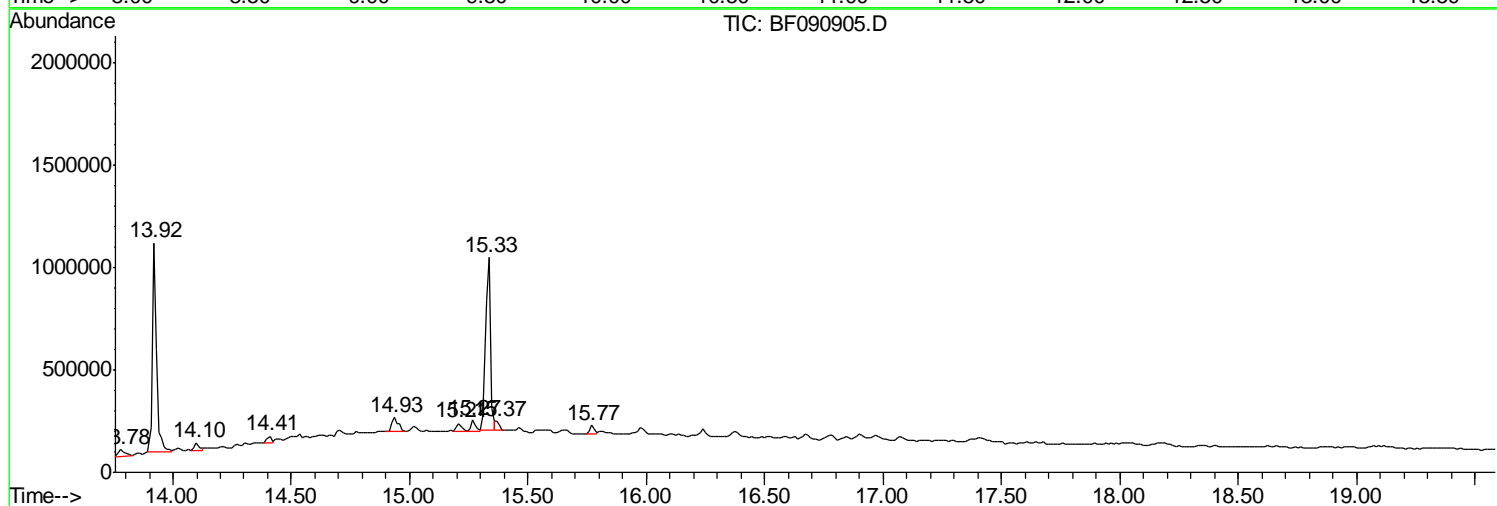
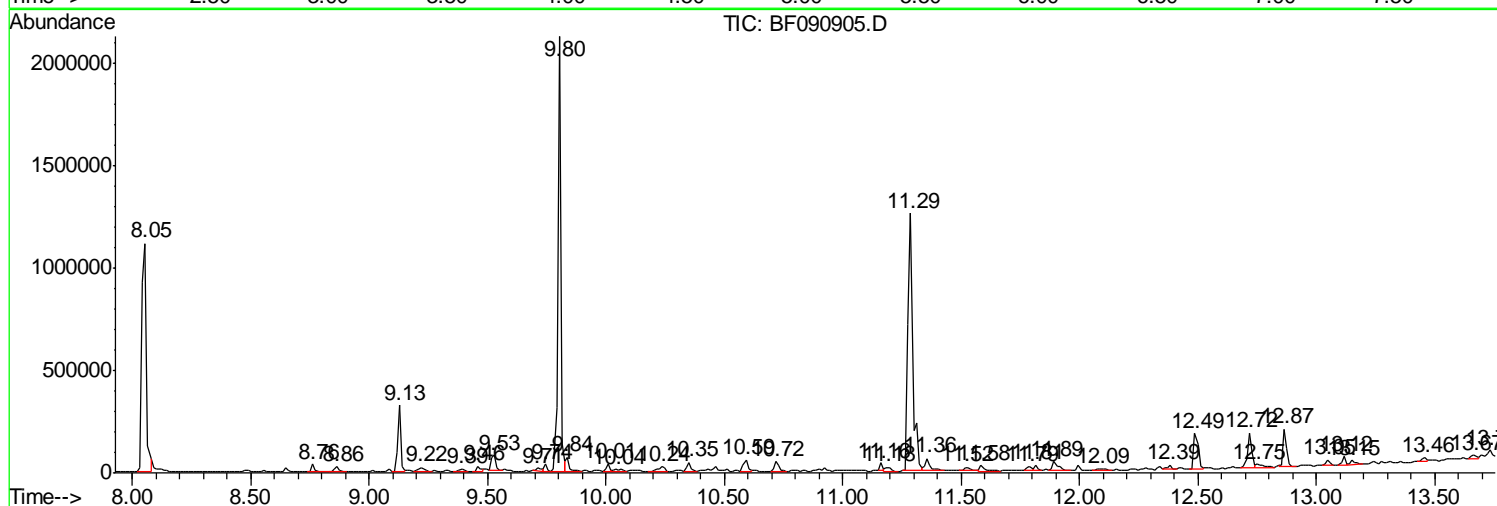
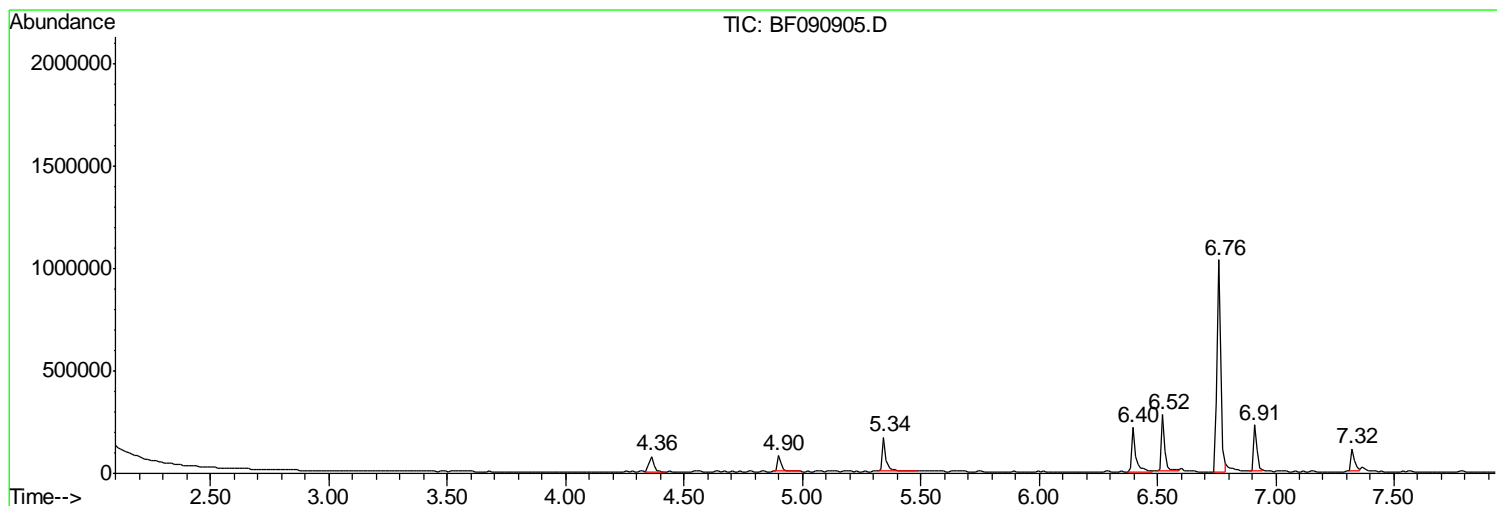
Sum of corrected areas: 12587732

Data Path : Z:\HPCHEM1\BNA_F\DATA\BF102816\
 Data File : BF090905.D
 Acq On : 28 Oct 2016 13:00
 Operator : UM/SJ
 Sample : H5411-07 10X
 Misc :
 ALS Vial : 8 Sample Multiplier: 1

Instrument :
 BNA_F
 ClientSampleId :
 SB-03-3.5-4.0

Quant Method : Z:\HPCHEM1\BNA_F\METHODS\8270-BF102616.M
 Quant Title : ASP BNA STANDARDS FOR 5 POINT CALIBRATION

TIC Library : C:\DATABASE\NIST02.L
 TIC Integration Parameters: LSCINT.P



Data Path : Z:\HPCHEM1\BNA_F\DATA\BF102816\
 Data File : BF090905.D
 Acq On : 28 Oct 2016 13:00
 Operator : UM/SJ
 Sample : H5411-07 10X
 Misc :
 ALS Vial : 8 Sample Multiplier: 1

Instrument :
 BNA_F
 ClientSampleId :
 SB-03-3.5-4.0

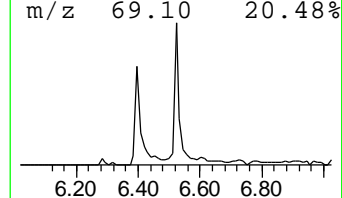
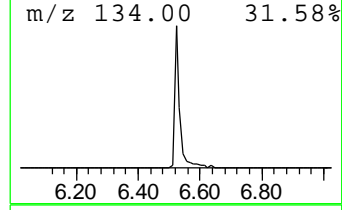
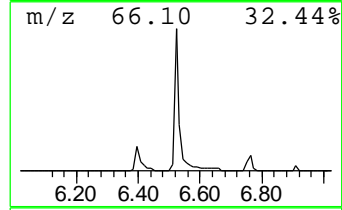
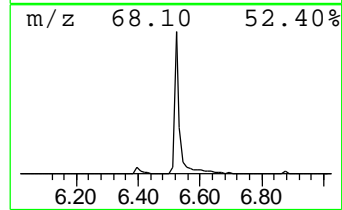
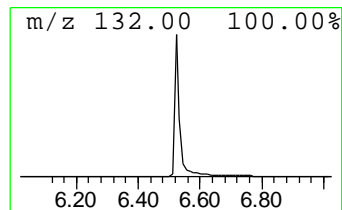
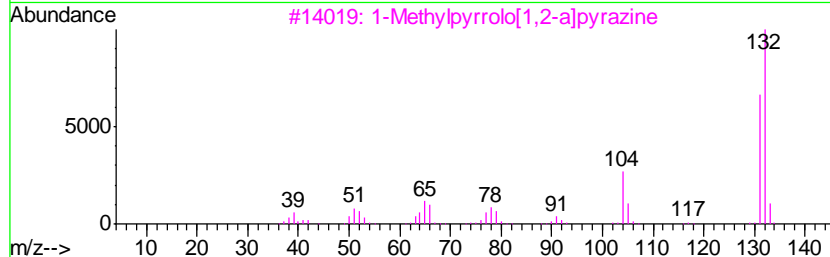
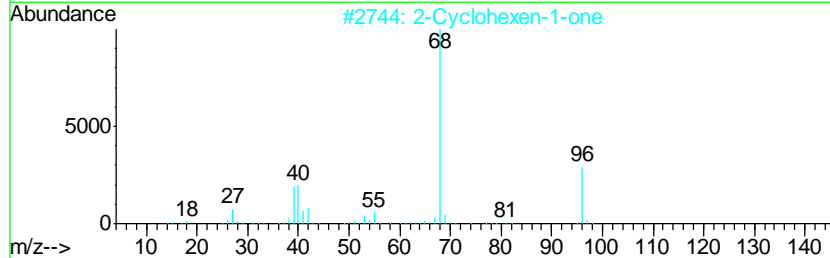
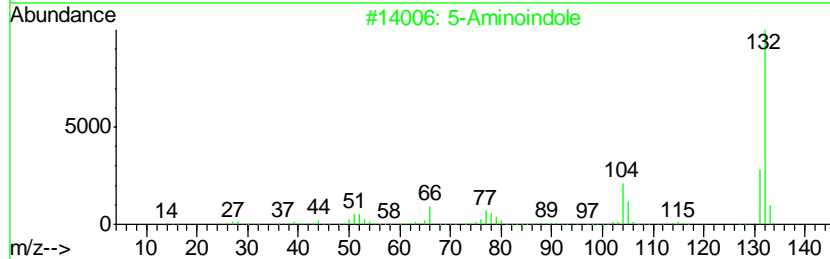
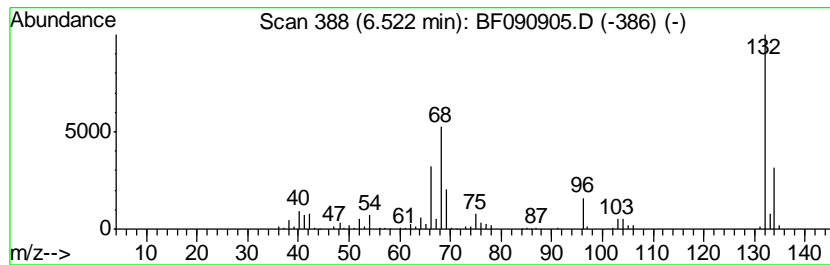
Quant Method : Z:\HPCHEM1\BNA_F\METHODS\8270-BF102616.M
 Quant Title : ASP BNA STANDARDS FOR 5 POINT CALIBRATION

TIC Library : C:\DATABASE\NIST02.L
 TIC Integration Parameters: LSCINT.P

 Peak Number 1 unknown6.52 Concentration Rank 1

R.T.	EstConc	Area	Relative to ISTD	R.T.
6.52	5.50 ng	287617	1,4-Dichlorobenzene-d4	6.76

Hit#	of	Tentative ID	MW	MolForm	CAS#	Qual
1	5	5-Aminoindole	132	C8H8N2	005192-03-0	22
2		2-Cyclohexen-1-one	96	C6H8O	000930-68-7	11
3		1-Methylpyrrolo[1,2-a]pyrazine	132	C8H8N2	064608-59-9	9
4		2H-Cyclopenta[d]pyridazine, 2-me...	132	C8H8N2	022291-85-6	9
5		4-Chloro-2-fluoro-pyrimidine	132	C4H2ClFN2	051422-00-5	9



Data Path : Z:\HPCHEM1\BNA_F\DATA\BF102816\
 Data File : BF090905.D
 Acq On : 28 Oct 2016 13:00
 Operator : UM/SJ
 Sample : H5411-07 10X
 Misc :
 ALS Vial : 8 Sample Multiplier: 1

Instrument :
 BNA_F
 ClientSampleID :
 SB-03-3.5-4.0

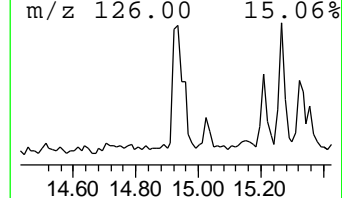
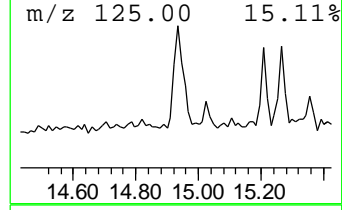
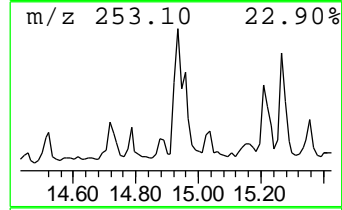
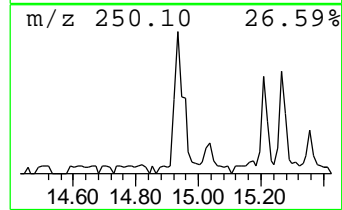
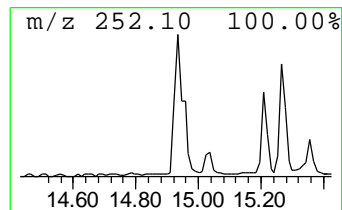
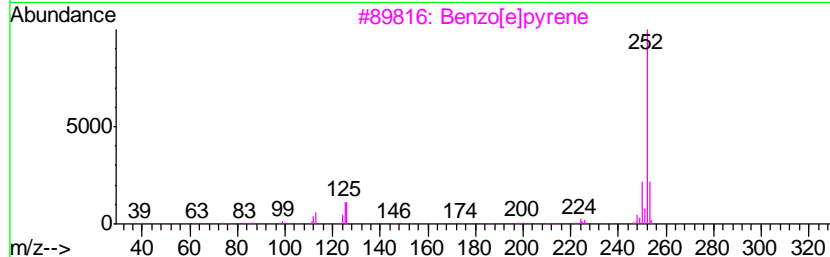
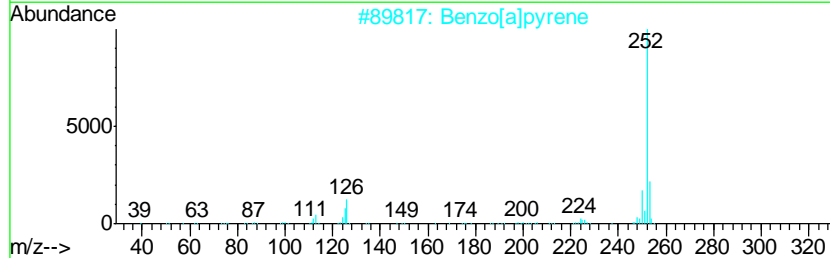
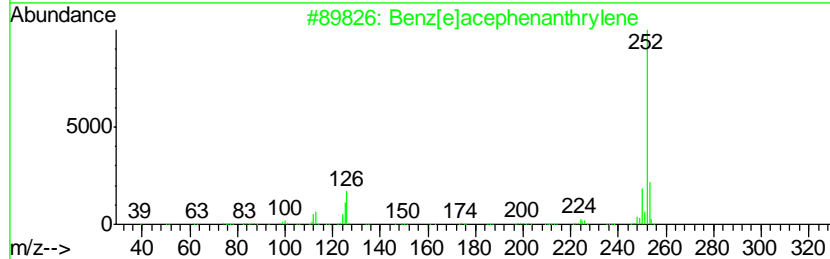
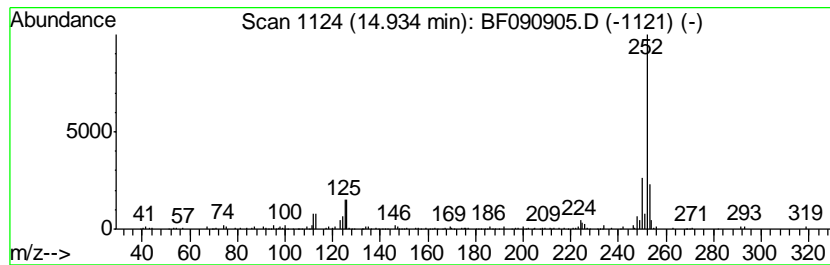
Quant Method : Z:\HPCHEM1\BNA_F\METHODS\8270-BF102616.M
 Quant Title : ASP BNA STANDARDS FOR 5 POINT CALIBRATION

TIC Library : C:\DATABASE\NIST02.L
 TIC Integration Parameters: LSCINT.P

 Peak Number 3 Benz[e]acephenanthrylene Concentration Rank 3

R.T.	EstConc	Area	Relative to ISTD	R.T.
14.93	2.34 ng	136229	Perylene-d12	15.33

Hit#	of	Tentative ID	MW	MolForm	CAS#	Qual
1	5	Benz[e]acephenanthrylene	252	C20H12	000205-99-2	97
2		Benzo[a]pyrene	252	C20H12	000050-32-8	97
3		Benzo[e]pyrene	252	C20H12	000192-97-2	96
4		Benzo[k]fluoranthene	252	C20H12	000207-08-9	93
5		Perylene	252	C20H12	000198-55-0	93



Data Path : Z:\HPCHEM1\BNA_F\DATA\BF102816\
Data File : BF090905.D
Acq On : 28 Oct 2016 13:00
Operator : UM/SJ
Sample : H5411-07 10X
Misc :
ALS Vial : 8 Sample Multiplier: 1

Instrument :
BNA_F
ClientSampleId :
SB-03-3.5-4.0

Quant Method : Z:\HPCHEM1\BNA_F\METHODS\8270-BF102616.M
Quant Title : ASP BNA STANDARDS FOR 5 POINT CALIBRATION

TIC Library : C:\DATABASE\NIST02.L
TIC Integration Parameters: LSCINT.P

TIC Top Hit name	RT	EstConc	Units	Response	--Internal Standard--			
					#	RT	Resp	Conc
unknown6.52	6.52	5.5	ng	287617	1	6.76	1046690	20.0
Benz[e]acephenant...	14.93	2.3	ng	136229	6	15.33	1163850	20.0