

Data Path : Z:\HPCHEM1\BNA F\DATA\BF103017\
 Data File : BF099965.D
 Acq On : 30 Oct 2017 17:45
 Operator : SJ/JU
 Sample : I6171-05 2X
 Misc :
 ALS Vial : 16 Sample Multiplier: 1

Instrument :
 BNA_F
Client Sampled :
 CL-01-102617-C

Manual Integrations
APPROVED
 Sohil
 10/31/2017 7:41:06 PM

Quant Time: Oct 31 02:51:43 2017
 Quant Method : Z:\HPCHEM1\BNA F\METHODS\8270-BF102317.M
 Quant Title : ASP BNA STANDARDS FOR 5 POINT CALIBRATION
 QLast Update : Fri Oct 27 15:58:57 2017
 Response via : Initial Calibration

Internal Standards	R.T.	QIon	Response	Conc	Units	Dev(Min)	
1) 1,4-Dichlorobenzene-d4	6.79	152	97769	20.00	ng	0.00	
21) Naphthalene-d8	8.07	136	402265	20.00	ng	-0.01	
38) Acenaphthene-d10	9.82	164	182539	20.00	ng	-0.02	
63) Phenanthrene-d10	11.32	188	308635	20.00	ng	-0.02	
75) Chrysene-d12	13.97	240	193780	20.00	ng	-0.02	
86) Perylene-d12	15.46	264	185315	20.00	ng	0.00	
System Monitoring Compounds							
5) 2-Fluorophenol	5.40	112	320949	51.54	ng	-0.01	
7) Phenol-d6	6.43	99	413433	55.99	ng	-0.01	
23) Nitrobenzene-d5	7.36	82	213180	34.12	ng	-0.01	
41) 2,4,6-Tribromophenol	10.62	330	97657	58.71	ng	-0.02	
44) 2-Fluorobiphenyl	9.15	172	510845	43.18	ng	-0.01	
78) Terphenyl-d14	12.90	244	413674	46.65	ng	-0.02	
Target Compounds							
10) Phenol	6.45	94	20188	2.490	ng		79
49) Dimethylphthalate	9.54	163	86701	5.998	ng		99
74) Fluoranthene	12.54	202	57439	3.173	ng		98
77) Pyrene	12.77	202	63148	4.286	ng		98
80) Benzo(a)anthracene	13.97	228	25297	2.059	ng		96
82) Chrysene	14.00	228	25864	2.240	ng		96
87) Benzo(b)fluoranthene	15.03	252	36572m	3.125	ng		
89) Benzo(a)pyrene	15.40	252	27618	2.627	ng	#	83
91) Benzo(g,h,i)perylene	17.42	276	20094	2.199	ng	#	85

(#) = qualifier out of range (m) = manual integration (+) = signals summed

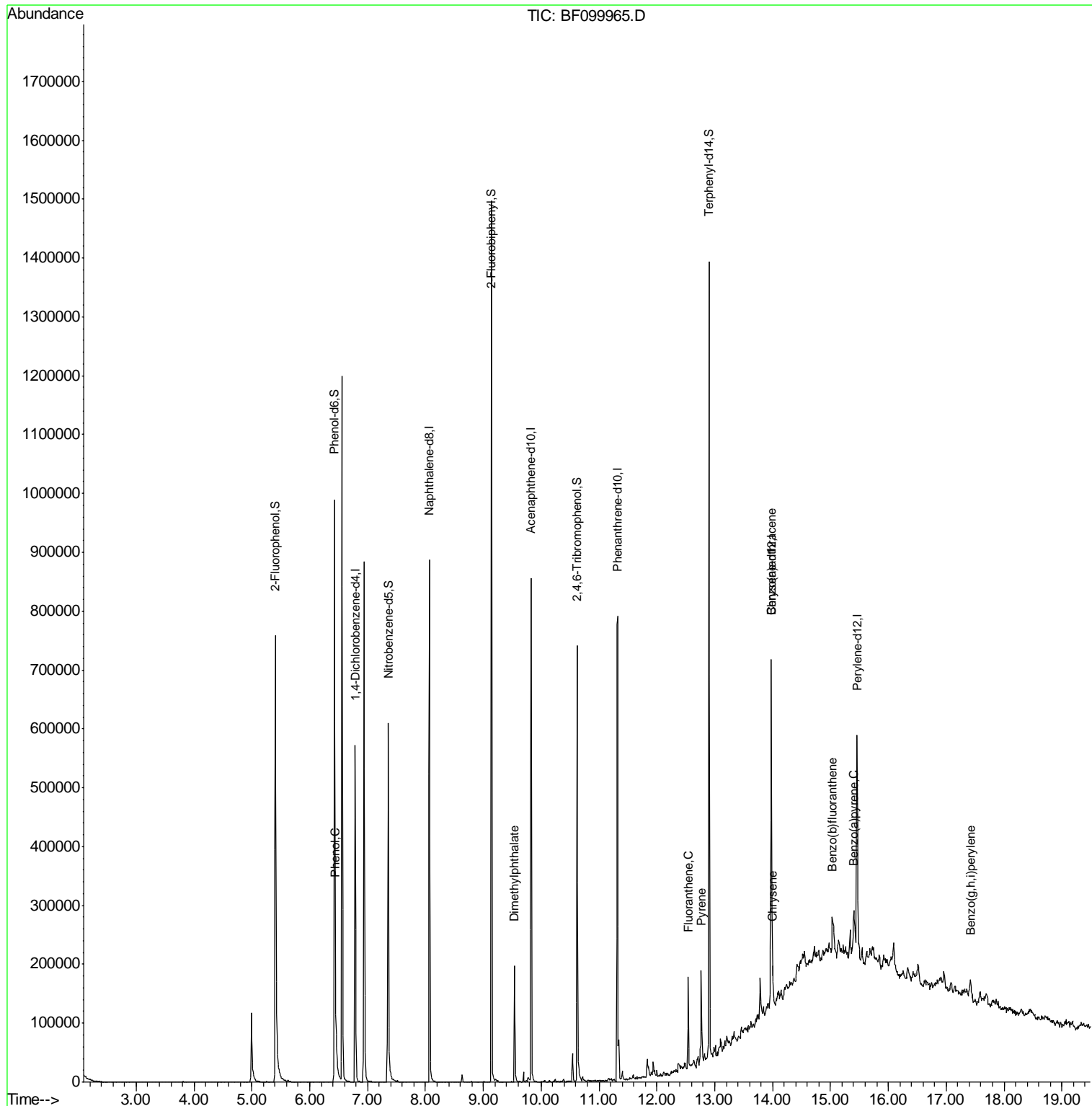
Data Path : Z:\HPCHEM1\BNA F\DATA\BF103017\
 Data File : BF099965.D
 Acq On : 30 Oct 2017 17:45
 Operator : SJ/JU
 Sample : I6171-05 2X
 Misc :
 ALS Vial : 16 Sample Multiplier: 1

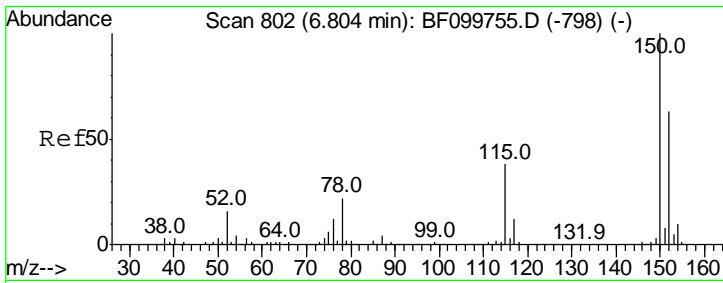
Instrument :
 BNA_F
 ClientSampled :
 CL-01-102617-C

Manual Integrations
 APPROVED

Sohil
 10/31/2017 7:41:06 PM

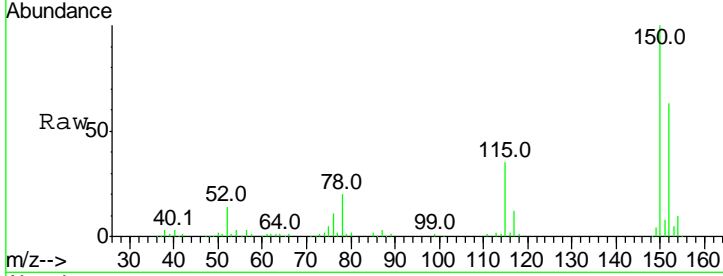
Quant Time: Oct 31 02:51:43 2017
 Quant Method : Z:\HPCHEM1\BNA F\METHODS\8270-BF102317.M
 Quant Title : ASP BNA STANDARDS FOR 5 POINT CALIBRATION
 QLast Update : Fri Oct 27 15:58:57 2017
 Response via : Initial Calibration





#1
 1,4-Dichlorobenzene-d4
 Concen: 20.000 ng
 RT: 6.79 min Scan# 799
 Delta R.T. -0.01 min
 Lab File: BF099965.D
 Acq: 30 Oct 2017 17:45

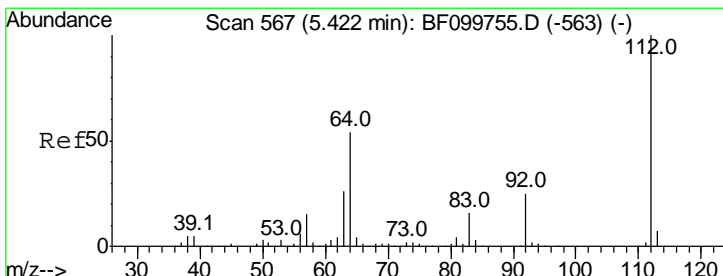
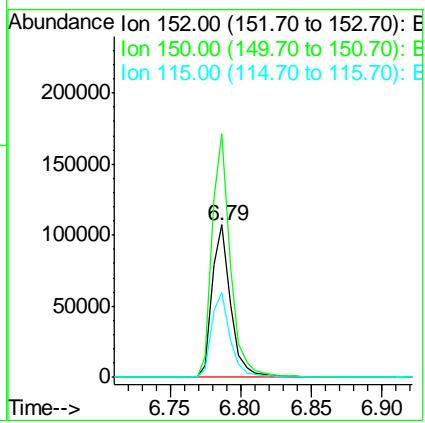
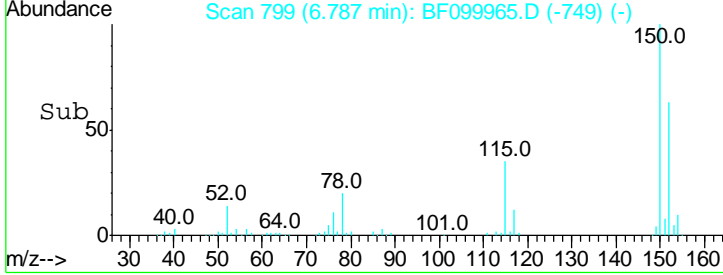
Instrument :
 BNA_F
ClientSampled :
 CL-01-102617-C



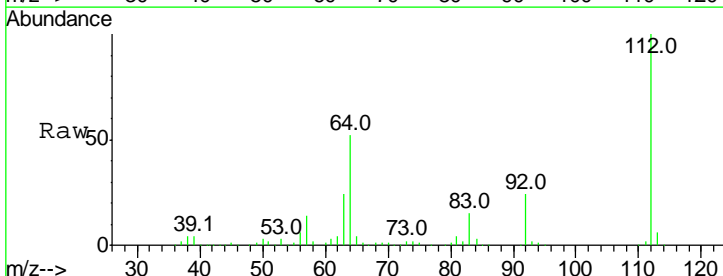
Tgt Ion: 152 Resp: 97769

Ion	Ratio	Lower	Upper
152	100		
150	159.7	124.6	186.8
115	55.8	50.1	75.1

Manual Integrations
APPROVED
 Sohil
 10/31/2017 7:41:06 PM

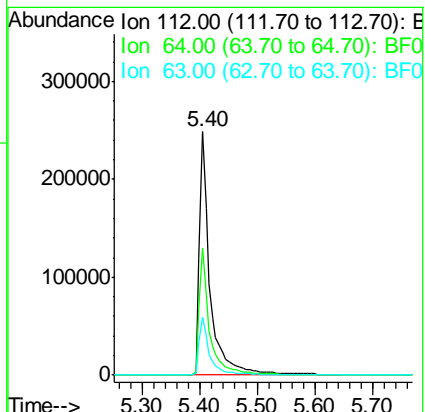
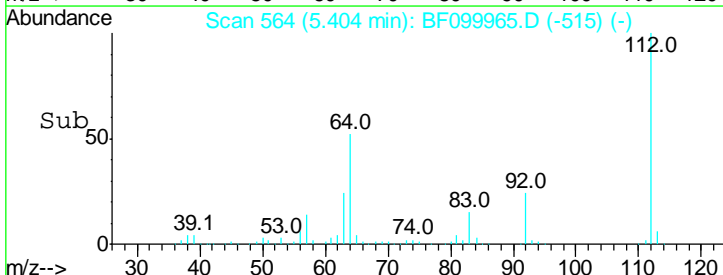


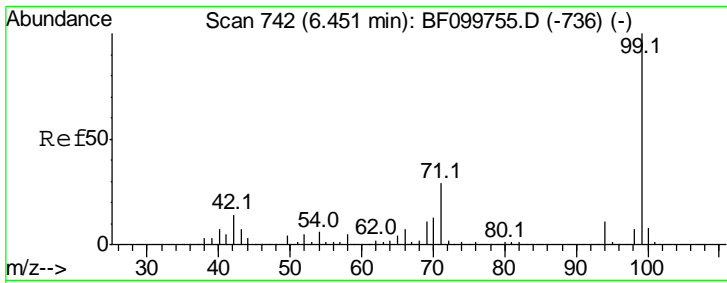
#5
 2-Fluorophenol
 Concen: 51.538 ng
 RT: 5.40 min Scan# 564
 Delta R.T. -0.01 min
 Lab File: BF099965.D
 Acq: 30 Oct 2017 17:45



Tgt Ion: 112 Resp: 320949

Ion	Ratio	Lower	Upper
112	100		
64	52.4	47.9	71.9
63	24.1	23.7	35.5





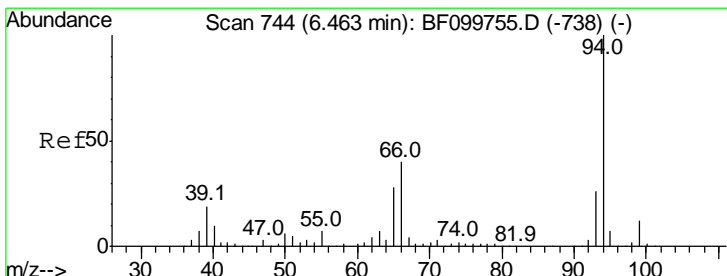
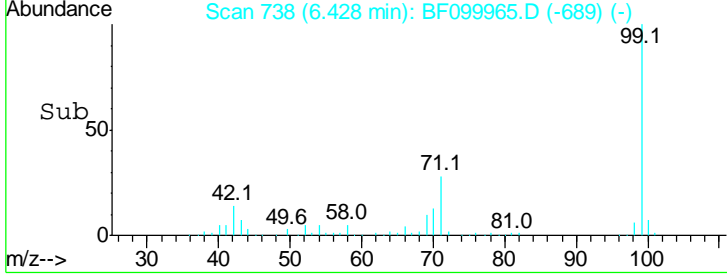
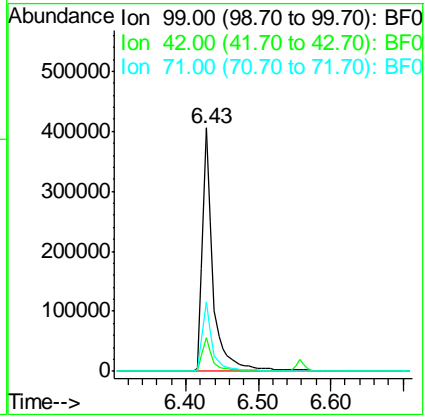
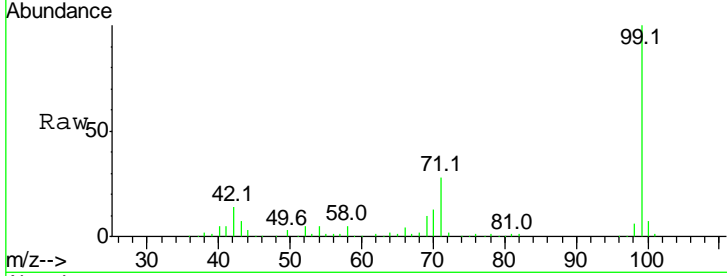
#7
 Phenol-d6
 Concen: 55.990 ng
 RT: 6.43 min Scan# 738
 Delta R.T. -0.01 min
 Lab File: BF099965.D
 Acq: 30 Oct 2017 17:45

Instrument :
 BNA_F
ClientSampled :
 CL-01-102617-C

Tgt Ion: 99 Resp: 413433

Ion	Ratio	Lower	Upper
99	100		
42	13.9	14.5	21.7#
71	28.3	25.4	38.0

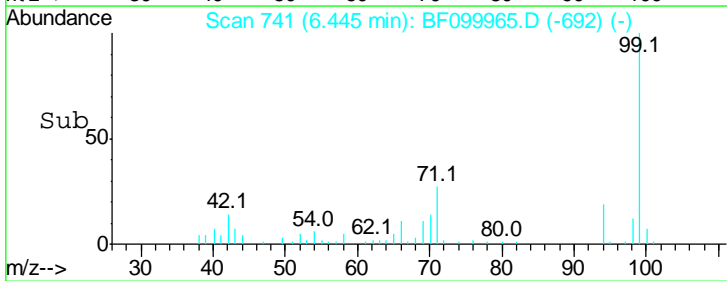
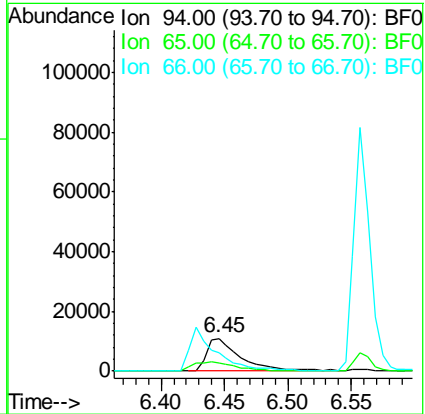
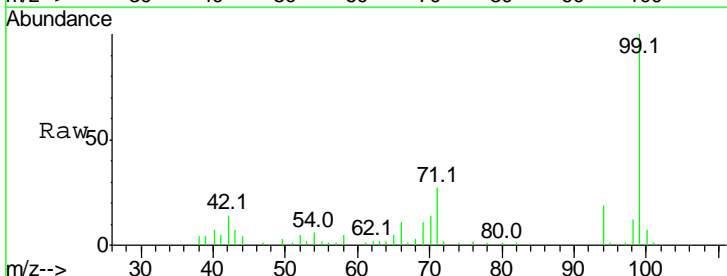
Manual Integrations
APPROVED
 Sohil
 10/31/2017 7:41:06 PM

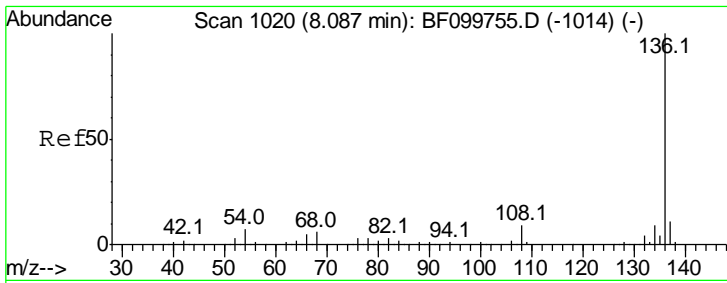


#10
 Phenol
 Concen: 2.490 ng
 RT: 6.45 min Scan# 741
 Delta R.T. -0.01 min
 Lab File: BF099965.D
 Acq: 30 Oct 2017 17:45

Tgt Ion: 94 Resp: 20188

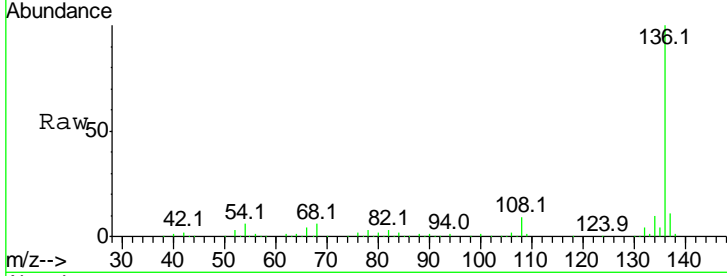
Ion	Ratio	Lower	Upper
94	100		
65	25.1	7.9	47.9
66	55.4	16.2	56.2





#21
 Naphthalene-d8
 Concen: 20.000 ng
 RT: 8.07 min Scan# 1017
 Delta R.T. -0.01 min
 Lab File: BF099965.D
 Acq: 30 Oct 2017 17:45

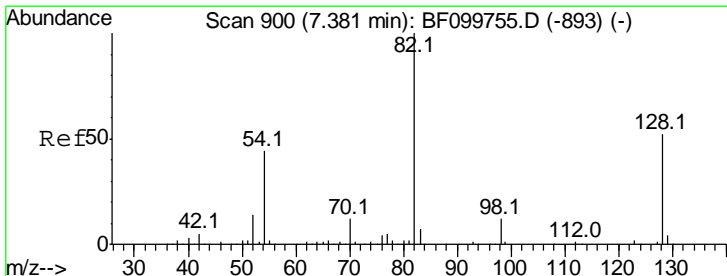
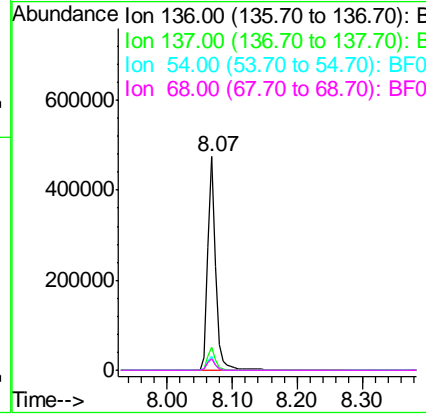
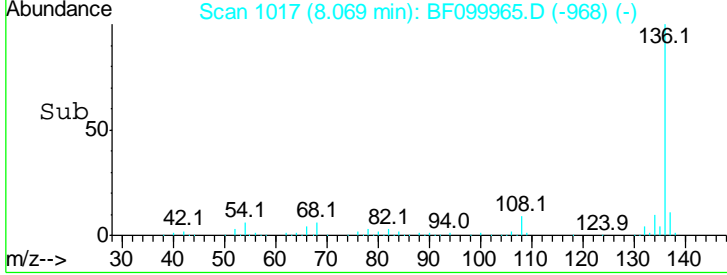
Instrument :
 BNA_F
ClientSampled :
 CL-01-102617-C



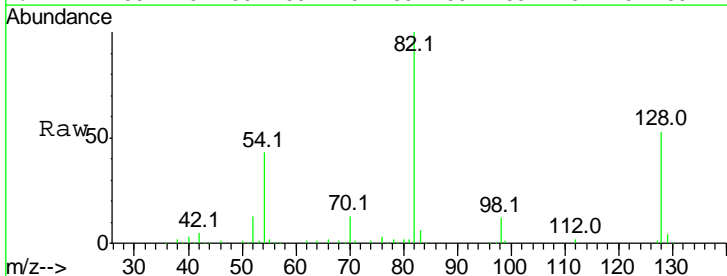
Tgt Ion: 136 Resp: 402265

Ion	Ratio	Lower	Upper
136	100		
137	11.0	8.9	13.3
54	6.4	6.6	9.8#
68	5.5	5.0	7.4

Manual Integrations
APPROVED
 Sohil
 10/31/2017 7:41:06 PM

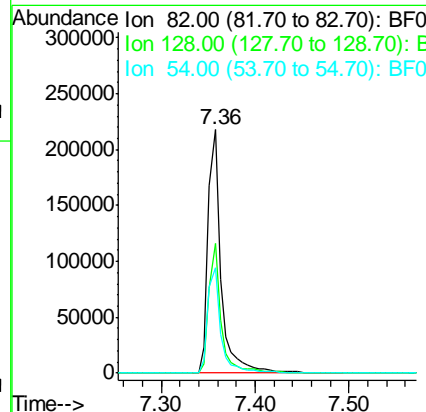
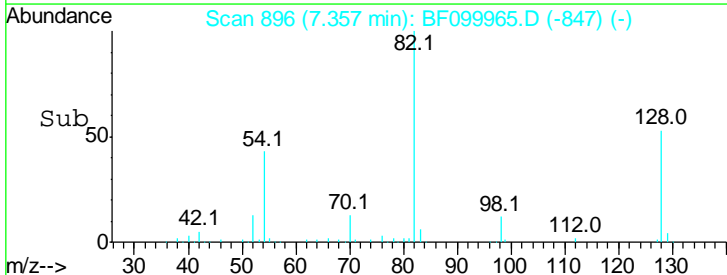


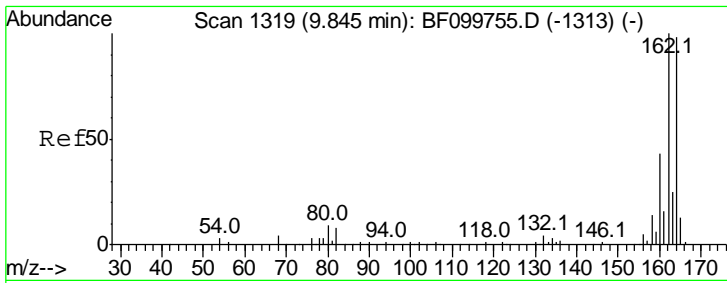
#23
 Nitrobenzene-d5
 Concen: 34.118 ng
 RT: 7.36 min Scan# 896
 Delta R.T. -0.01 min
 Lab File: BF099965.D
 Acq: 30 Oct 2017 17:45



Tgt Ion: 82 Resp: 213180

Ion	Ratio	Lower	Upper
82	100		
128	53.5	36.1	54.1
54	43.4	41.4	62.2





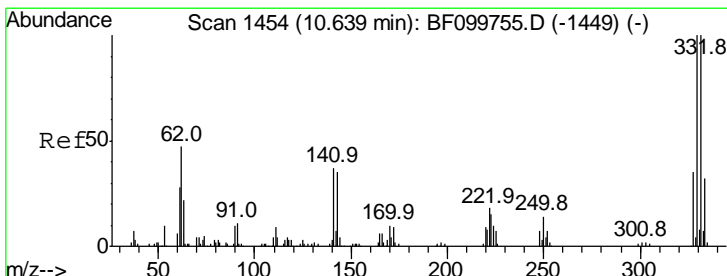
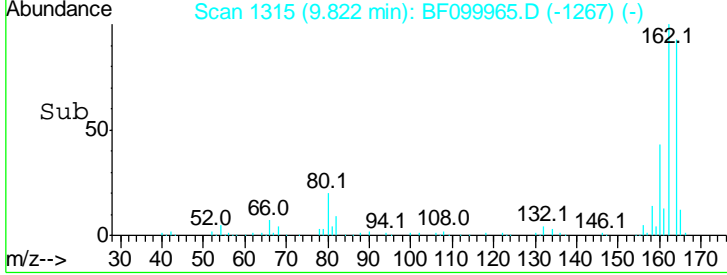
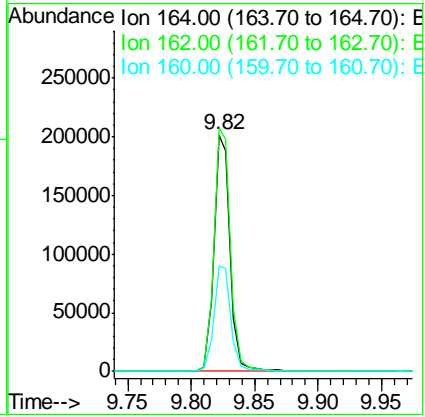
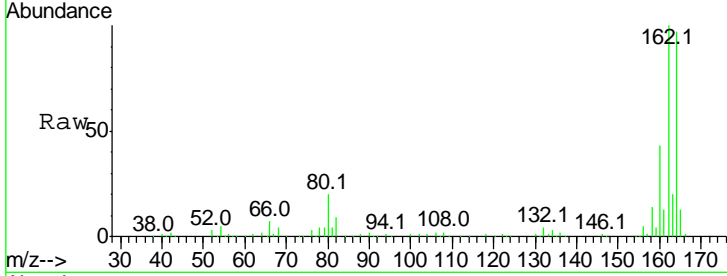
#38
 Acenaphthene-d10
 Concen: 20.000 ng
 RT: 9.82 min Scan# 1315
 Delta R.T. -0.02 min
 Lab File: BF099965.D
 Acq: 30 Oct 2017 17:45

Instrument :
 BNA_F
ClientSampled :
 CL-01-102617-C

Tgt Ion	Resp	Lower	Upper
164	100		
162	103.0	86.1	129.1
160	44.6	38.3	57.5

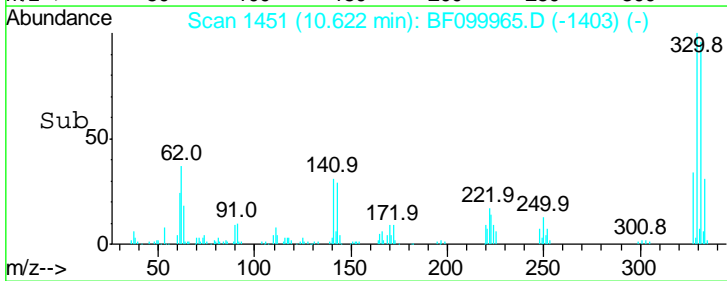
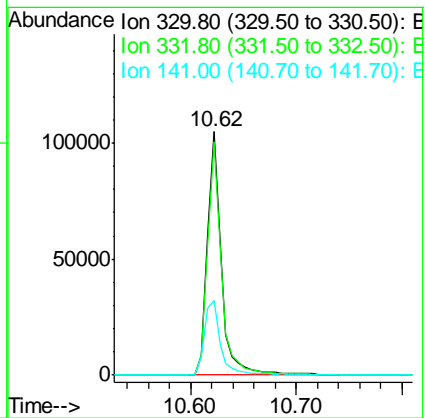
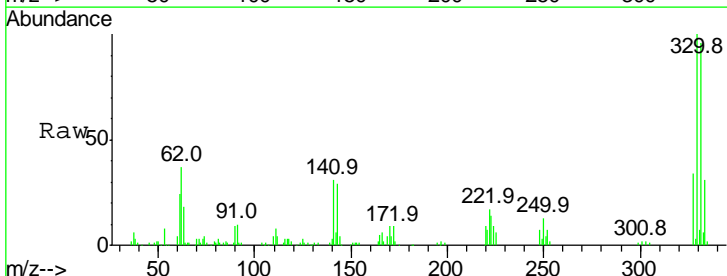
Manual Integrations
APPROVED

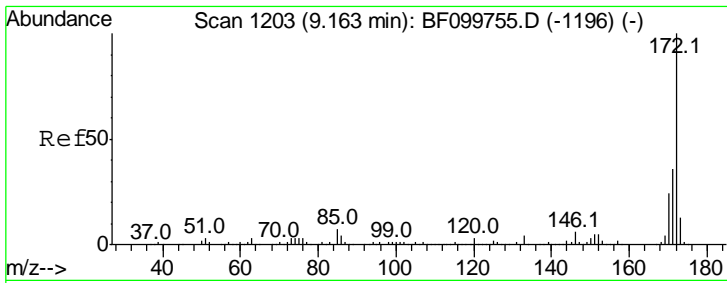
Sohil
 10/31/2017 7:41:06 PM



#41
 2,4,6-Tribromophenol
 Concen: 58.705 ng
 RT: 10.62 min Scan# 1451
 Delta R.T. -0.02 min
 Lab File: BF099965.D
 Acq: 30 Oct 2017 17:45

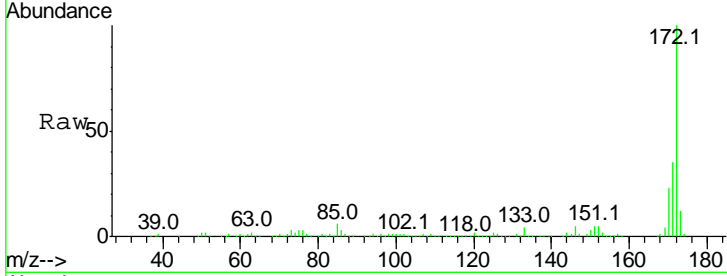
Tgt Ion	Resp	Lower	Upper
330	100		
332	96.1	77.0	115.6
141	35.4	29.9	44.9





#44
 2-Fluorobiphenyl
 Concen: 43.177 ng
 RT: 9.15 min Scan# 1200
 Delta R.T. -0.01 min
 Lab File: BF099965.D
 Acq: 30 Oct 2017 17:45

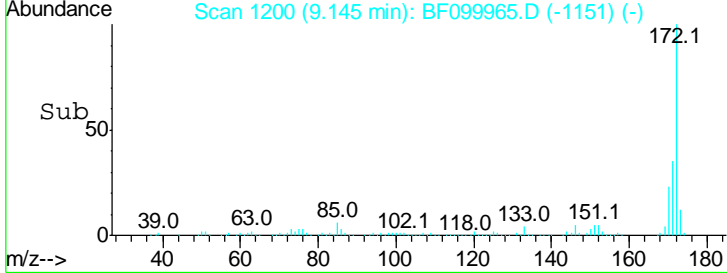
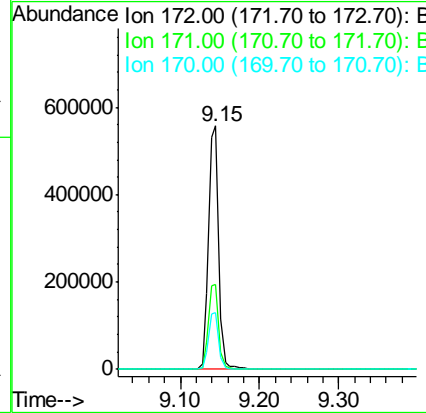
Instrument :
 BNA_F
ClientSampled :
 CL-01-102617-C



Tgt Ion: 172 Resp: 510845

Ion	Ratio	Lower	Upper
172	100		
171	34.8	29.7	44.5
170	23.2	19.6	29.4

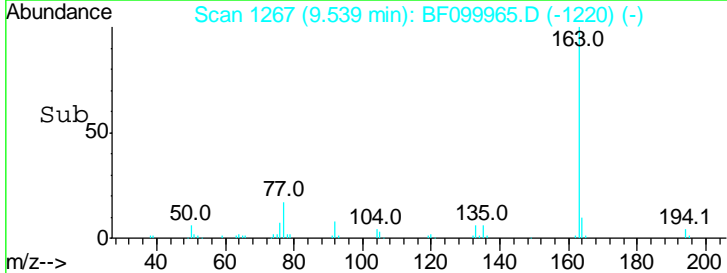
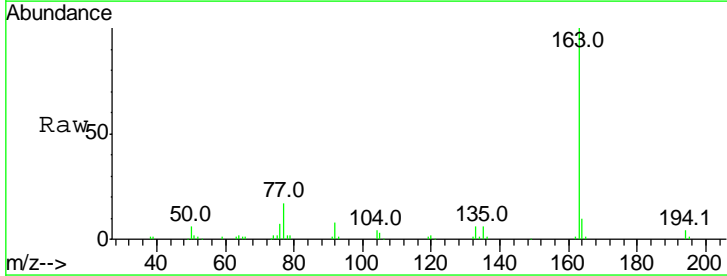
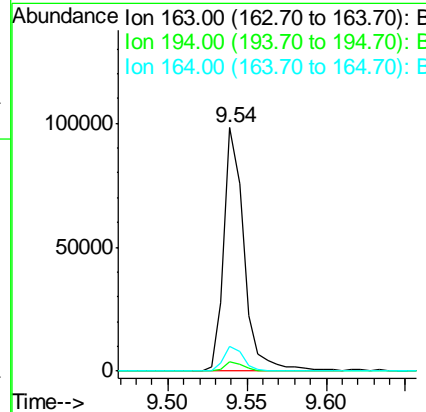
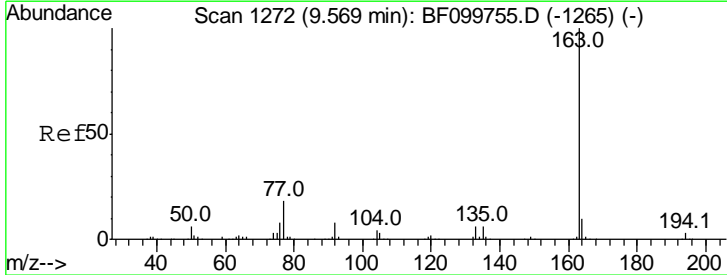
Manual Integrations
APPROVED
 Sohil
 10/31/2017 7:41:06 PM

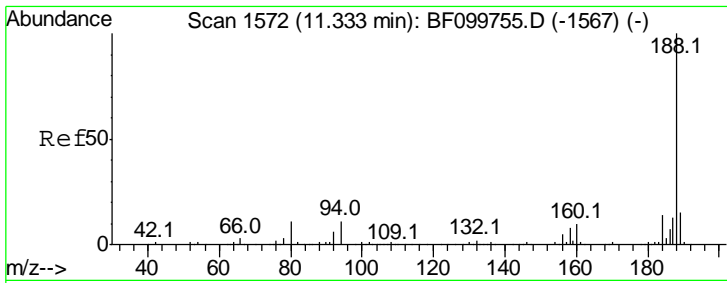


#49
 Dimethylphthalate
 Concen: 5.998 ng
 RT: 9.54 min Scan# 1267
 Delta R.T. -0.02 min
 Lab File: BF099965.D
 Acq: 30 Oct 2017 17:45

Tgt Ion: 163 Resp: 86701

Ion	Ratio	Lower	Upper
163	100		
194	3.8	2.7	4.1
164	10.4	8.2	12.2





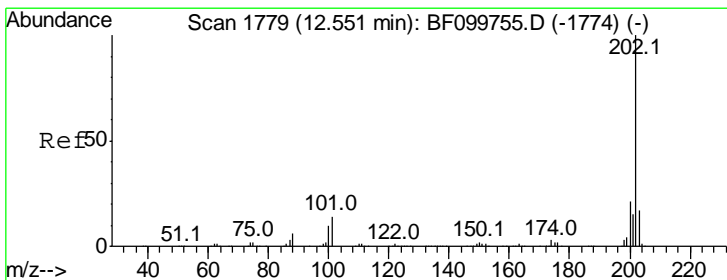
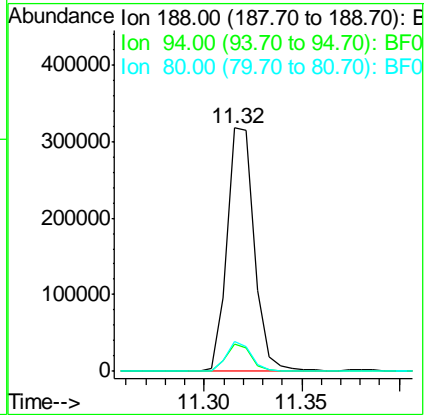
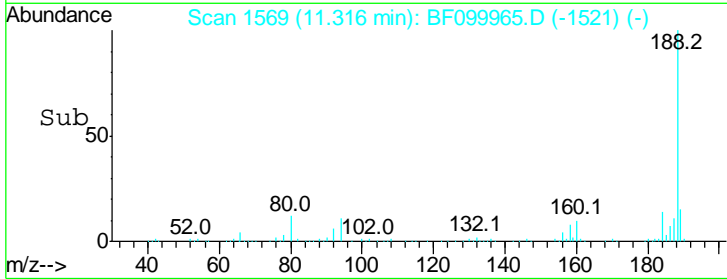
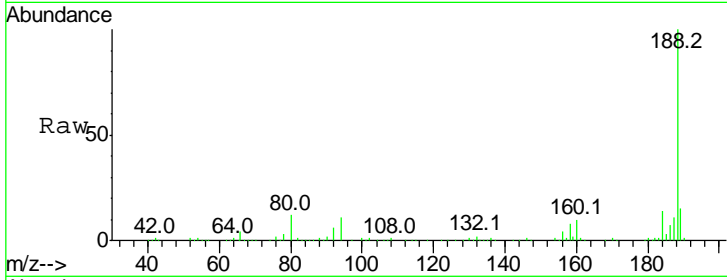
#63
 Phenanthrene-d10
 Concen: 20.000 ng
 RT: 11.32 min Scan# 1569
 Delta R.T. -0.02 min
 Lab File: BF099965.D
 Acq: 30 Oct 2017 17:45

Instrument :
 BNA_F
Client Sampled :
 CL-01-102617-C

Tgt Ion	Resp	Lower	Upper
188	100		
94	11.1	8.5	12.7
80	12.3	9.2	13.8

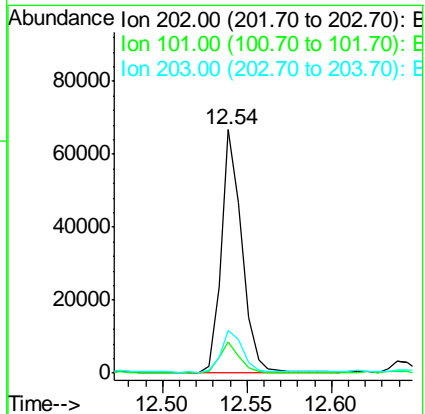
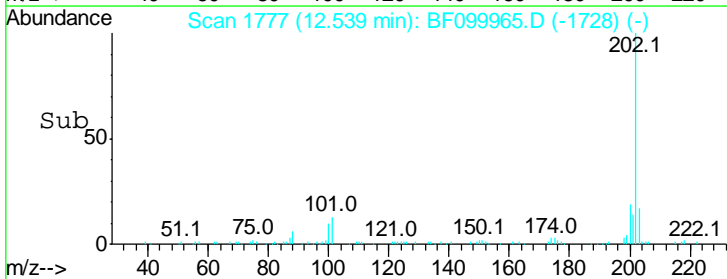
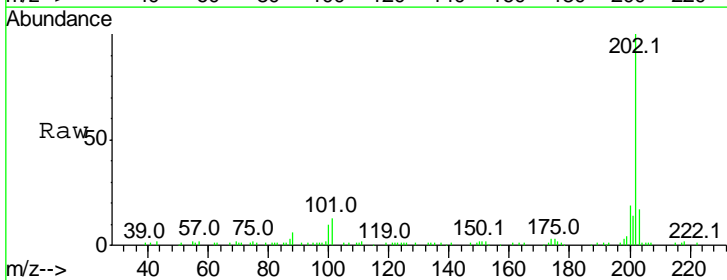
Manual Integrations
APPROVED

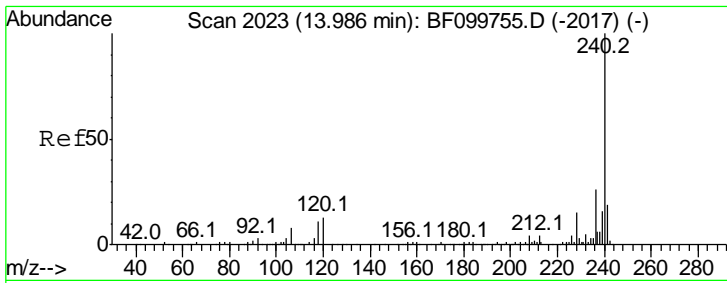
Sohil
 10/31/2017 7:41:06 PM



#74
 Fluoranthene
 Concen: 3.173 ng
 RT: 12.54 min Scan# 1777
 Delta R.T. -0.01 min
 Lab File: BF099965.D
 Acq: 30 Oct 2017 17:45

Tgt Ion	Resp	Lower	Upper
202	100		
101	12.9	0.0	34.1
203	17.3	0.0	38.1





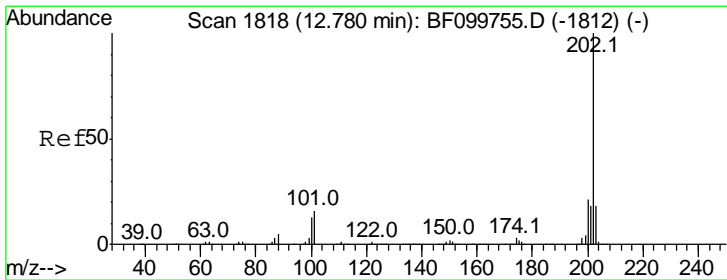
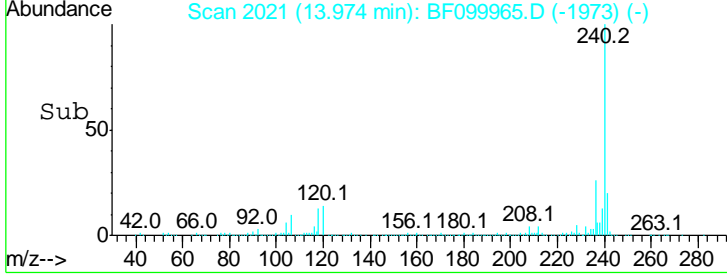
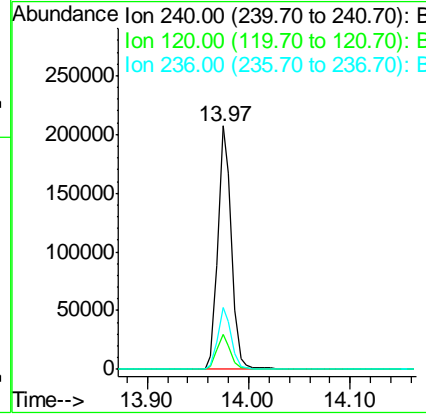
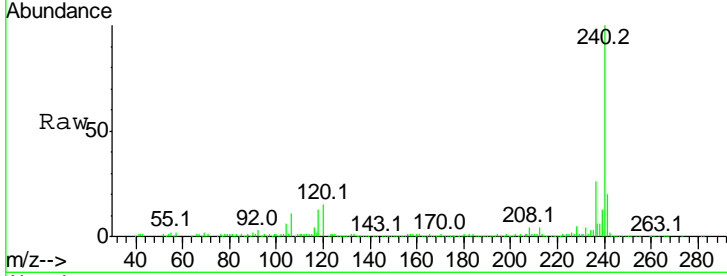
#75
 Chrysene-d12
 Concen: 20.000 ng
 RT: 13.97 min Scan# 2021
 Delta R.T. -0.02 min
 Lab File: BF099965.D
 Acq: 30 Oct 2017 17:45

Instrument :
 BNA_F
ClientSampled :
 CL-01-102617-C

Tgt Ion	Resp	Lower	Upper
240	100		
120	14.6	9.5	14.3#
236	25.5	20.7	31.1

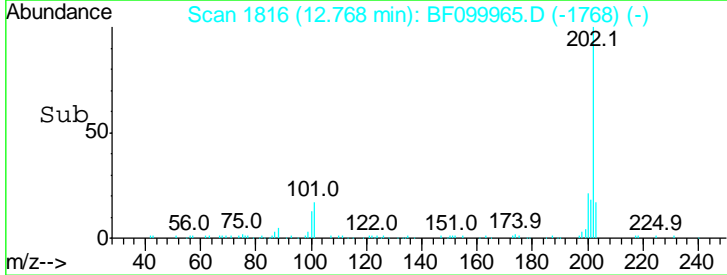
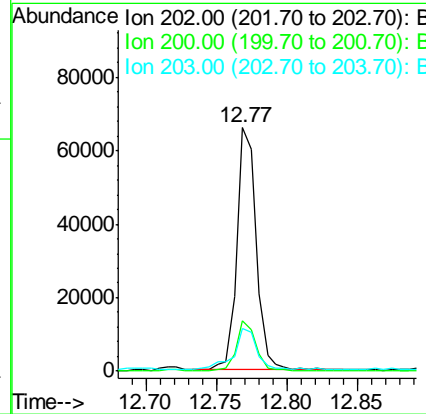
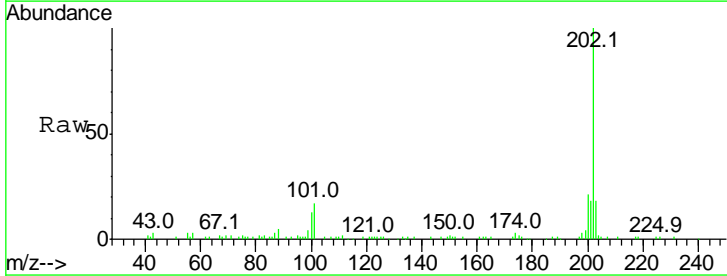
Manual Integrations
APPROVED

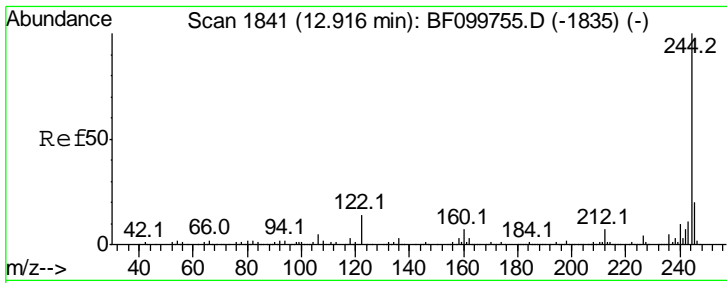
Sohil
 10/31/2017 7:41:06 PM



#77
 Pyrene
 Concen: 4.286 ng
 RT: 12.77 min Scan# 1816
 Delta R.T. -0.02 min
 Lab File: BF099965.D
 Acq: 30 Oct 2017 17:45

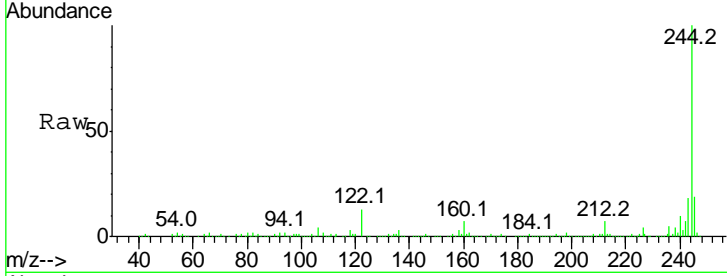
Tgt Ion	Resp	Lower	Upper
202	100		
200	20.6	17.4	26.2
203	17.6	14.3	21.5





#78
 Terphenyl-d14
 Concen: 46.652 ng
 RT: 12.90 min Scan# 1839
 Delta R.T. -0.02 min
 Lab File: BF099965.D
 Acq: 30 Oct 2017 17:45

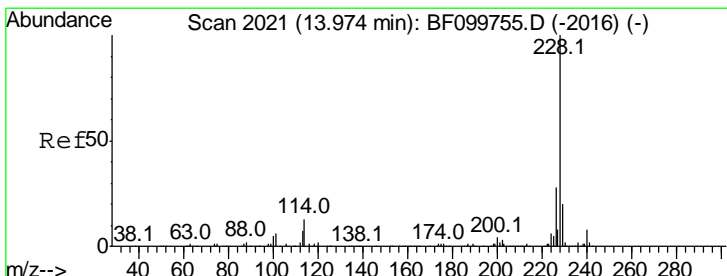
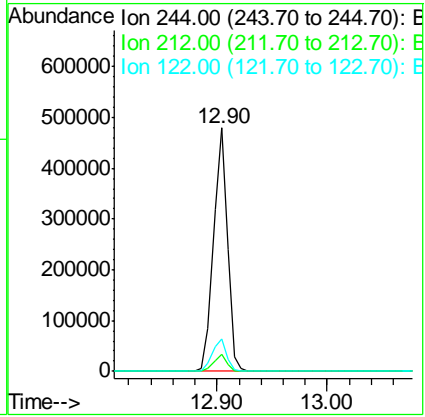
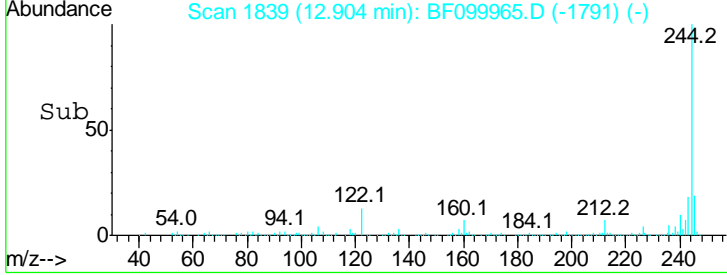
Instrument :
 BNA_F
ClientSampled :
 CL-01-102617-C



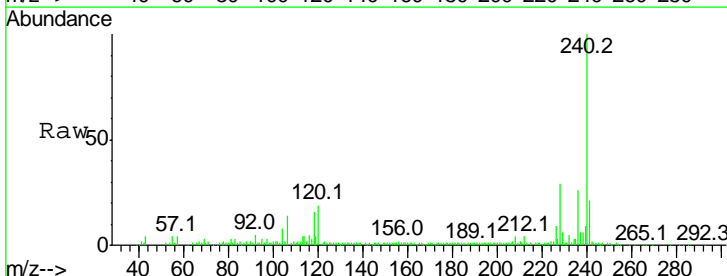
Tgt Ion: 244 Resp: 413674

Ion	Ratio	Lower	Upper
244	100		
212	6.8	5.4	8.0
122	13.4	11.0	16.4

Manual Integrations
APPROVED
 Sohil
 10/31/2017 7:41:06 PM

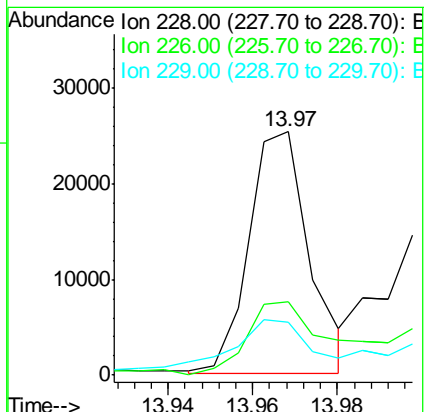
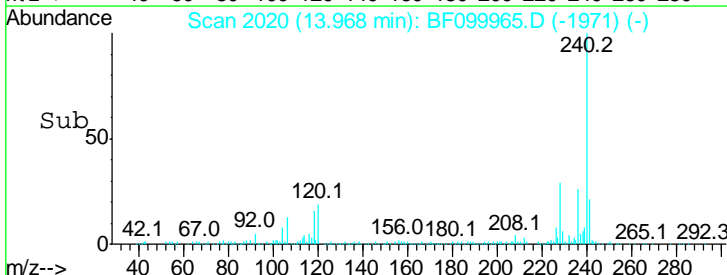


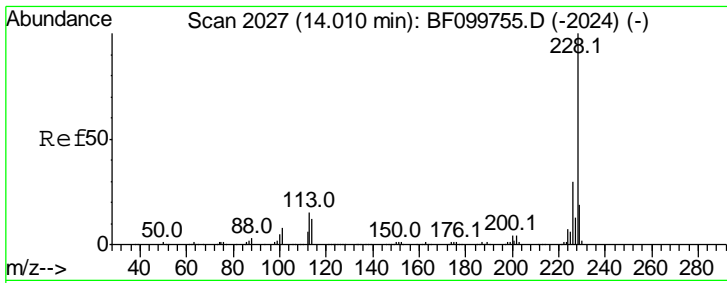
#80
 Benzo(a)anthracene
 Concen: 2.059 ng
 RT: 13.97 min Scan# 2020
 Delta R.T. -0.01 min
 Lab File: BF099965.D
 Acq: 30 Oct 2017 17:45



Tgt Ion: 228 Resp: 25297

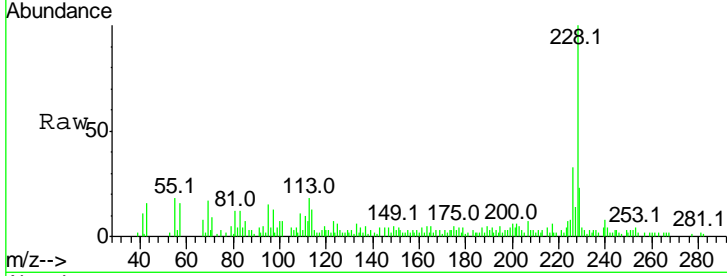
Ion	Ratio	Lower	Upper
228	100		
226	29.9	22.6	33.8
229	21.6	15.8	23.6





#82
 Chrysene
 Concen: 2.240 ng
 RT: 14.00 min Scan# 2026
 Delta R.T. -0.01 min
 Lab File: BF099965.D
 Acq: 30 Oct 2017 17:45

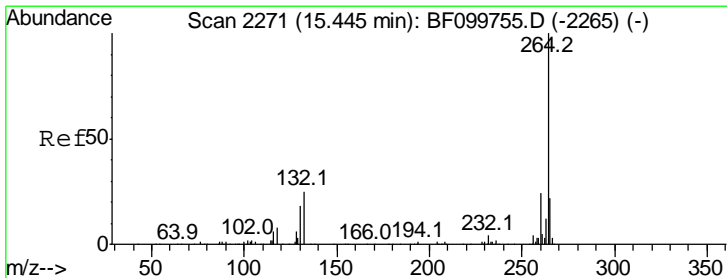
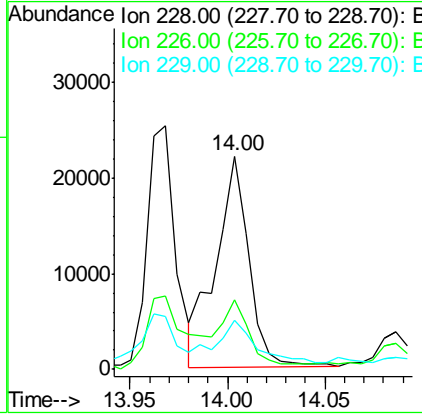
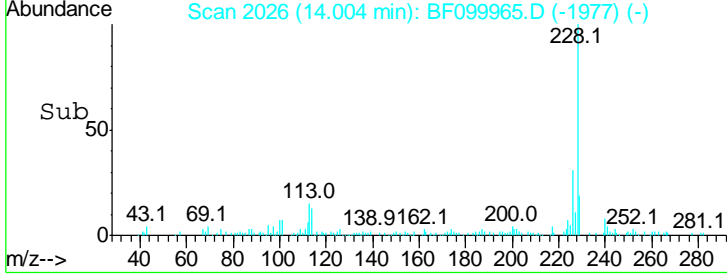
Instrument :
 BNA_F
Client Sampled :
 CL-01-102617-C



Tgt Ion: 228 Resp: 25864

Ion	Ratio	Lower	Upper
228	100		
226	32.7	25.0	37.6
229	22.7	16.2	24.4

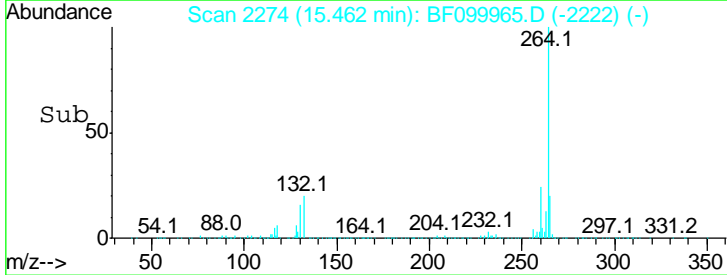
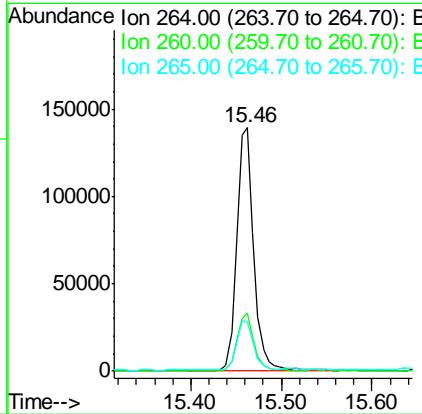
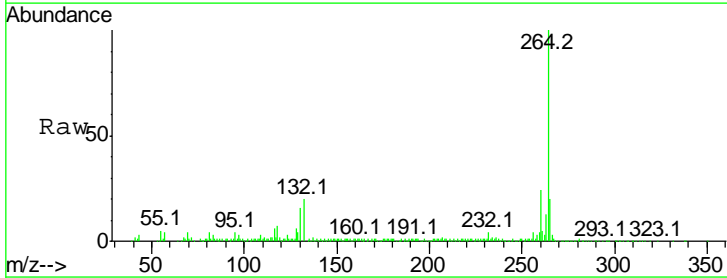
Manual Integrations
APPROVED
 Sohil
 10/31/2017 7:41:06 PM

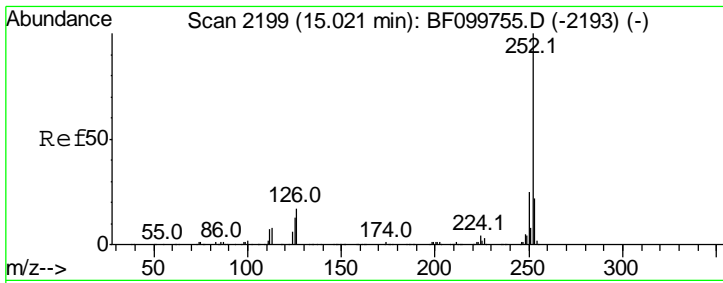


#86
 Perylene-d12
 Concen: 20.000 ng
 RT: 15.46 min Scan# 2274
 Delta R.T. 0.01 min
 Lab File: BF099965.D
 Acq: 30 Oct 2017 17:45

Tgt Ion: 264 Resp: 185315

Ion	Ratio	Lower	Upper
264	100		
260	23.7	19.2	28.8
265	20.4	17.5	26.3





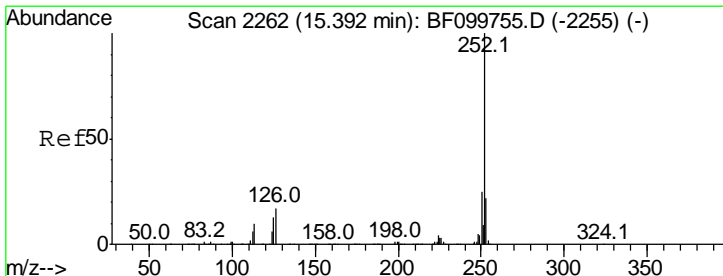
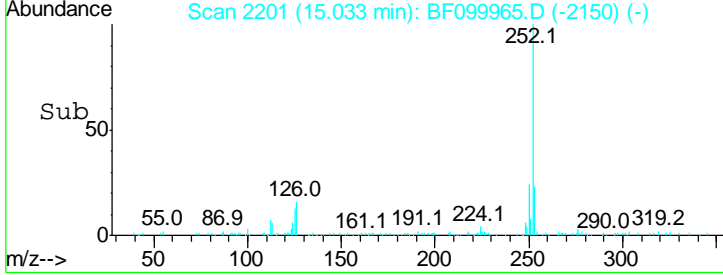
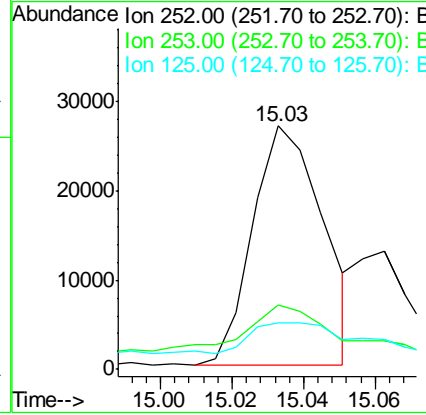
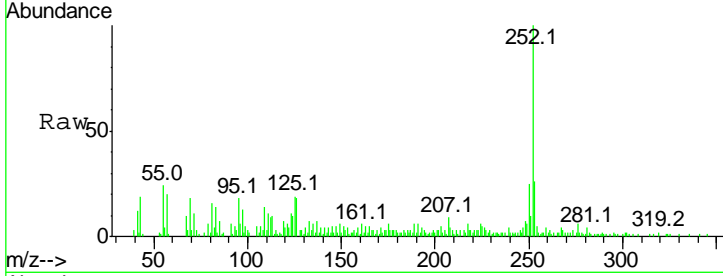
#87
 Benzo(b)fluoranthene
 Concen: 3.125 ng m
 RT: 15.03 min Scan# 2201
 Delta R.T. -0.00 min
 Lab File: BF099965.D
 Acq: 30 Oct 2017 17:45

Instrument :
 BNA_F
 ClientSampled :
 CL-01-102617-C

Tgt Ion	Ratio	Lower	Upper
252	100		
253	26.4	17.0	25.6#
125	18.9	9.0	13.6#

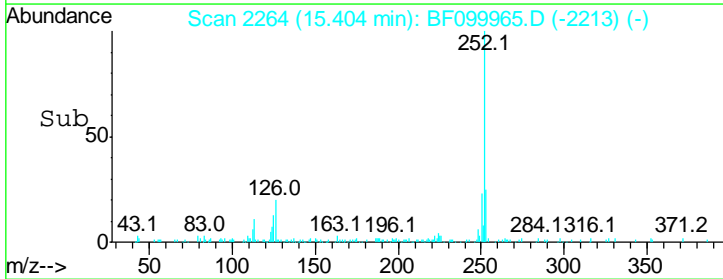
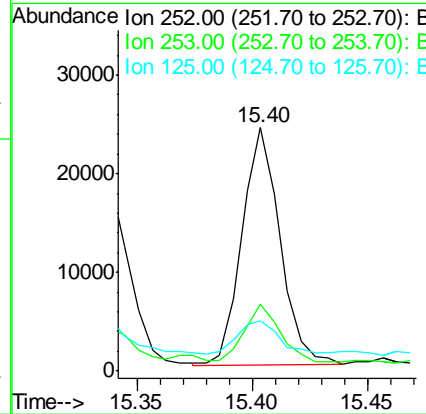
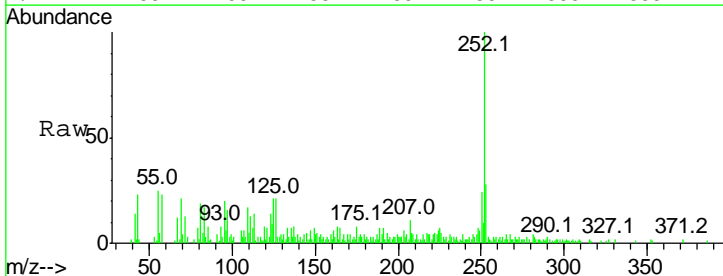
Manual Integrations
 APPROVED

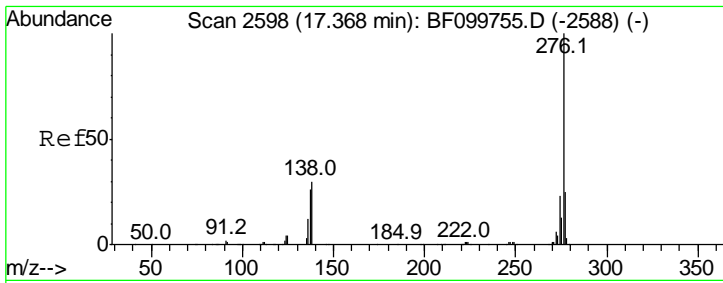
Sohil
 10/31/2017 7:41:06 PM



#89
 Benzo(a)pyrene
 Concen: 2.627 ng
 RT: 15.40 min Scan# 2264
 Delta R.T. -0.00 min
 Lab File: BF099965.D
 Acq: 30 Oct 2017 17:45

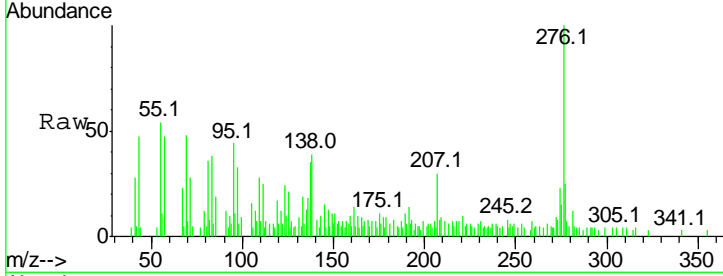
Tgt Ion	Ratio	Lower	Upper
252	100		
253	27.7	17.1	25.7#
125	20.8	9.8	14.6#





#91
 Benzo(a,h,i)perylene
 Concen: 2.199 ng
 RT: 17.42 min Scan# 2606
 Delta R.T. 0.02 min
 Lab File: BF099965.D
 Acq: 30 Oct 2017 17:45

Instrument :
 BNA_F
ClientSampled :
 CL-01-102617-C



Tot Ion: 276 Resp: 20094

Ion	Ratio	Lower	Upper
276	100		
277	25.2	17.9	26.9
138	38.8	21.8	32.8

Manual Integrations
APPROVED
 Sohil
 10/31/2017 7:41:06 PM

