

Data Path : Z:\HPCHEM1\BNA F\DATA\BF103017\
 Data File : BF099990.D
 Acq On : 31 Oct 2017 5:27
 Operator : SJ/JU
 Sample : I6083-16
 Misc :
 ALS Vial : 39 Sample Multiplier: 1

Instrument :
 BNA_F
 ClientSampleId :
 102017-SIDI-F-U-S

Quant Time: Oct 31 05:54:57 2017
 Quant Method : Z:\HPCHEM1\BNA F\METHODS\8270-BF102317.M
 Quant Title : ASP BNA STANDARDS FOR 5 POINT CALIBRATION
 QLast Update : Fri Oct 27 15:58:57 2017
 Response via : Initial Calibration

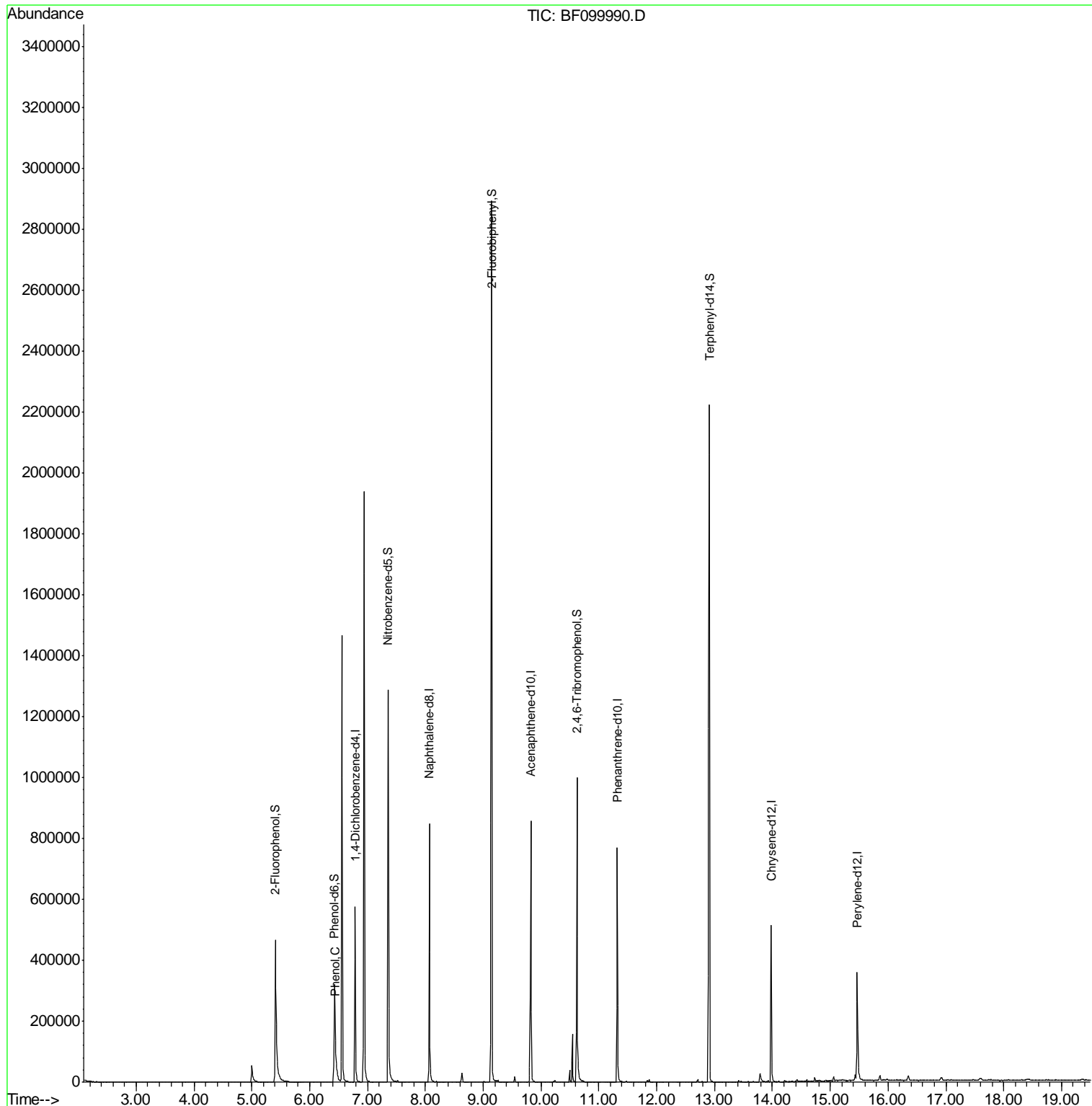
Internal Standards	R.T.	QIon	Response	Conc	Units	Dev(Min)
1) 1,4-Dichlorobenzene-d4	6.79	152	98454	20.00	ng	0.00
21) Naphthalene-d8	8.07	136	393138	20.00	ng	-0.01
38) Acenaphthene-d10	9.82	164	179860	20.00	ng	-0.02
63) Phenanthrene-d10	11.32	188	312424	20.00	ng	-0.02
75) Chrysene-d12	13.98	240	202185	20.00	ng	-0.01
86) Perylene-d12	15.47	264	181257	20.00	ng	0.01
System Monitoring Compounds						
5) 2-Fluorophenol	5.41	112	241015	38.43	ng	0.00
7) Phenol-d6	6.43	99	189323	25.46	ng	-0.01
23) Nitrobenzene-d5	7.36	82	500662	81.99	ng	-0.01
41) 2,4,6-Tribromophenol	10.62	330	132524	80.85	ng	-0.02
44) 2-Fluorobiphenyl	9.15	172	981403	84.18	ng	-0.01
78) Terphenyl-d14	12.91	244	849925	91.87	ng	-0.01
Target Compounds						
10) Phenol	6.45	94	17254	2.113	ng	Qvalue 85

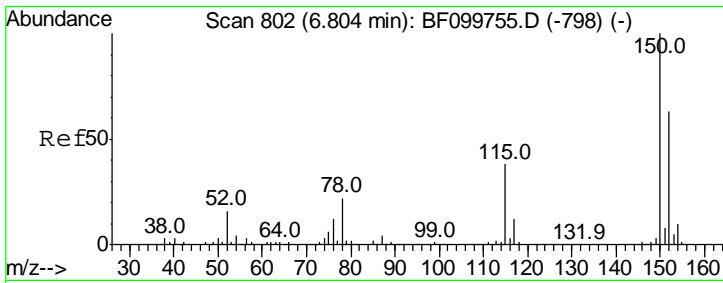
(#) = qualifier out of range (m) = manual integration (+) = signals summed

Data Path : Z:\HPCHEM1\BNA F\DATA\BF103017\
 Data File : BF099990.D
 Acq On : 31 Oct 2017 5:27
 Operator : SJ/JU
 Sample : I6083-16
 Misc :
 ALS Vial : 39 Sample Multiplier: 1

Instrument :
 BNA_F
 ClientSampleId :
 102017-SIDI-F-U-S

Quant Time: Oct 31 05:54:57 2017
 Quant Method : Z:\HPCHEM1\BNA F\METHODS\8270-BF102317.M
 Quant Title : ASP BNA STANDARDS FOR 5 POINT CALIBRATION
 QLast Update : Fri Oct 27 15:58:57 2017
 Response via : Initial Calibration



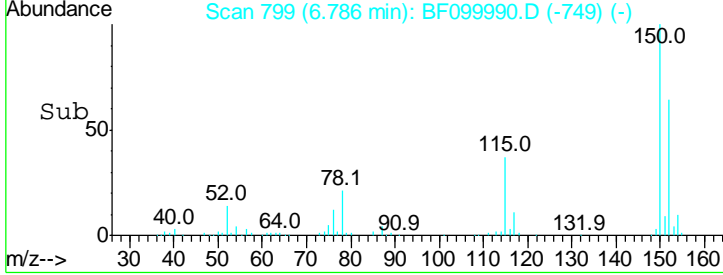
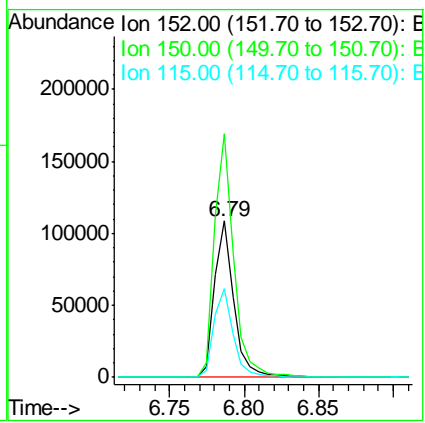
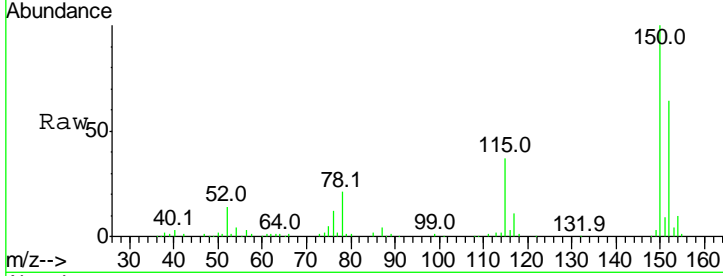


#1
 1,4-Dichlorobenzene-d4
 Concen: 20.000 ng
 RT: 6.79 min Scan# 799
 Delta R.T. -0.01 min
 Lab File: BF099990.D
 Acq: 31 Oct 2017 5:27

Instrument :
 BNA_F
ClientSampled :
 102017-SIDI-F-U-S

Tot Ion:152 Resp: 98454

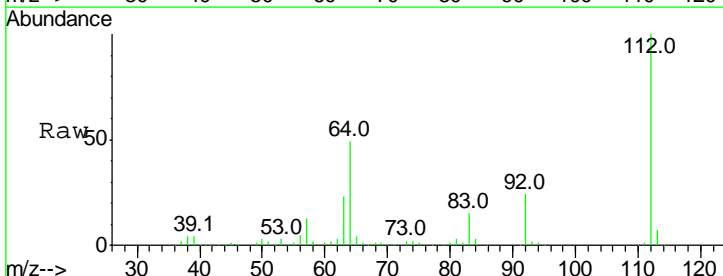
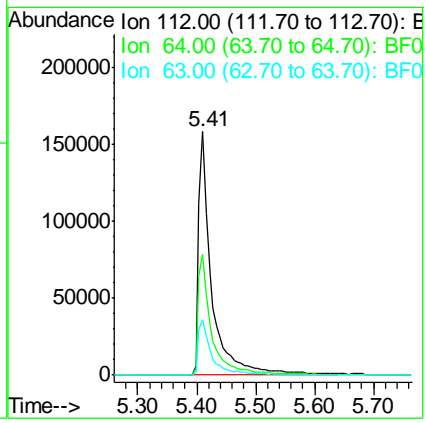
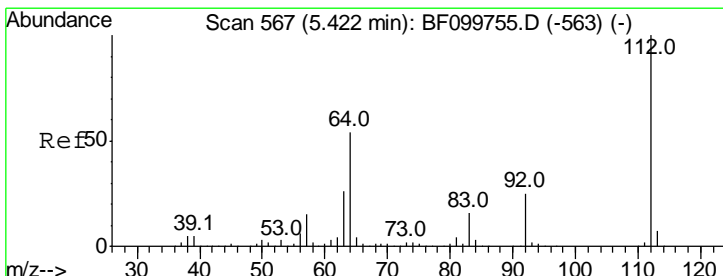
Ion	Ratio	Lower	Upper
152	100		
150	155.9	124.6	186.8
115	57.2	50.1	75.1

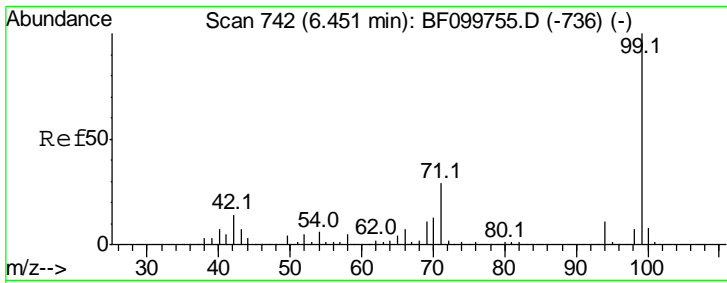


#5
 2-Fluorophenol
 Concen: 38.433 ng
 RT: 5.41 min Scan# 565
 Delta R.T. -0.01 min
 Lab File: BF099990.D
 Acq: 31 Oct 2017 5:27

Tgt Ion:112 Resp: 241015

Ion	Ratio	Lower	Upper
112	100		
64	49.5	47.9	71.9
63	22.7	23.7	35.5#

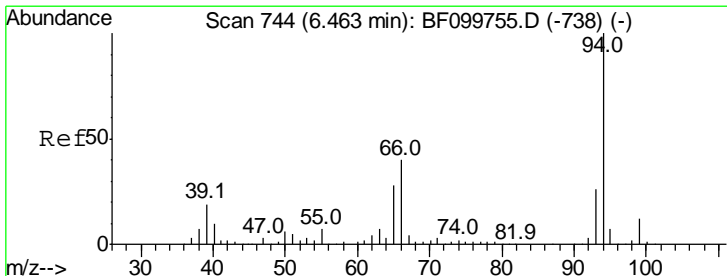
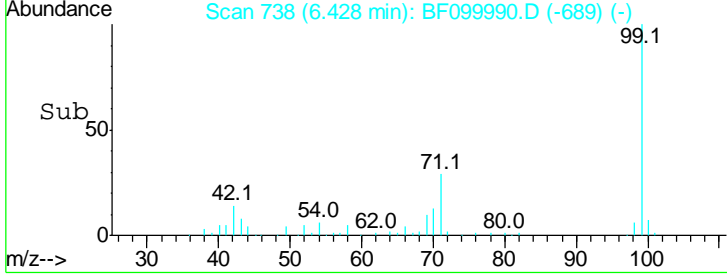
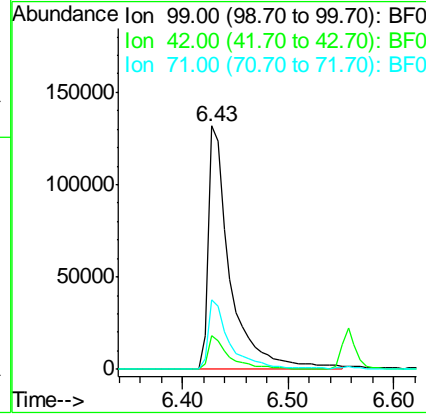
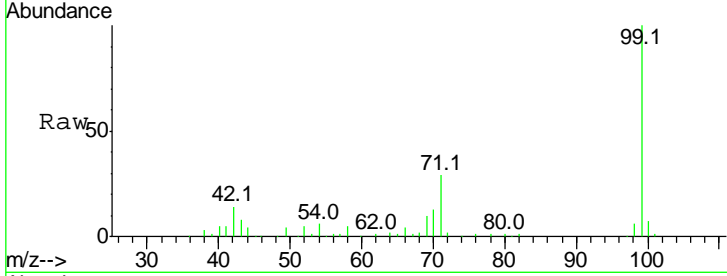




#7
 Phenol-d6
 Concen: 25.461 ng
 RT: 6.43 min Scan# 738
 Delta R.T. -0.01 min
 Lab File: BF099990.D
 Acq: 31 Oct 2017 5:27

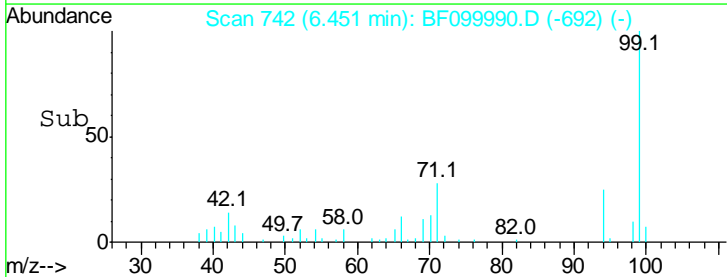
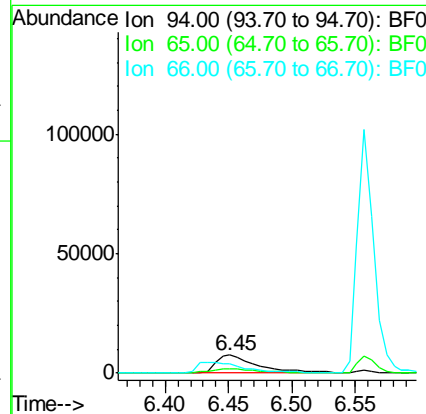
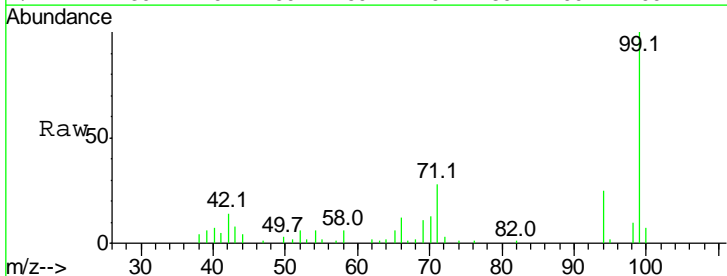
Instrument :
 BNA_F
ClientSampled :
 102017-SIDI-F-U-S

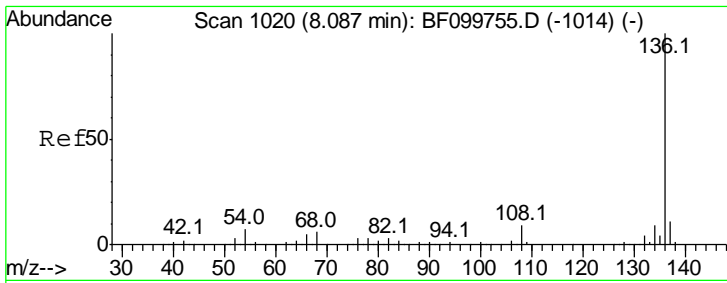
Tgt Ion	Resp	Lower	Upper
99	189323		
99	100		
42	13.7	14.5	21.7#
71	28.7	25.4	38.0



#10
 Phenol
 Concen: 2.113 ng
 RT: 6.45 min Scan# 742
 Delta R.T. -0.01 min
 Lab File: BF099990.D
 Acq: 31 Oct 2017 5:27

Tgt Ion	Resp	Lower	Upper
94	17254		
94	100		
65	24.3	7.9	47.9
66	49.1	16.2	56.2



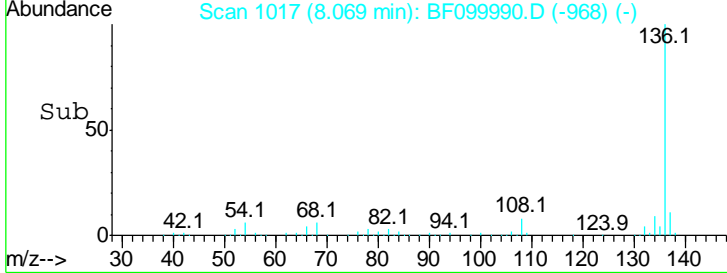
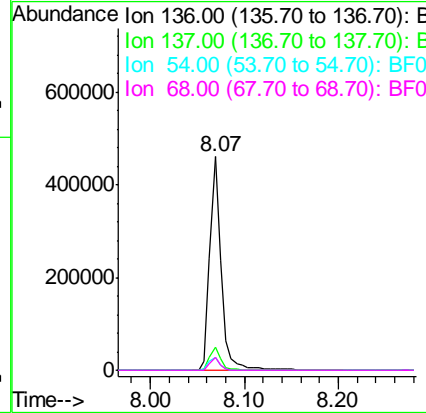
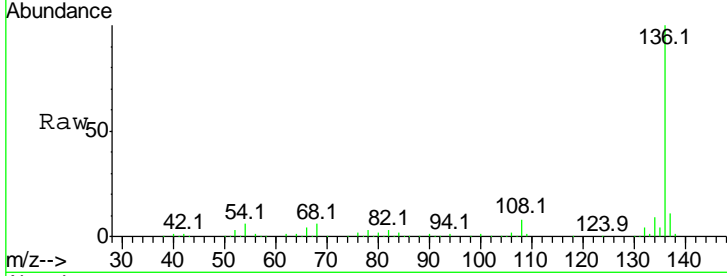


#21
 Naphthalene-d8
 Concen: 20.000 ng
 RT: 8.07 min Scan# 1017
 Delta R.T. -0.01 min
 Lab File: BF099990.D
 Acq: 31 Oct 2017 5:27

Instrument :
 BNA_F
ClientSampled :
 102017-SIDI-F-U-S

Tot Ion: 136 Resp: 393138

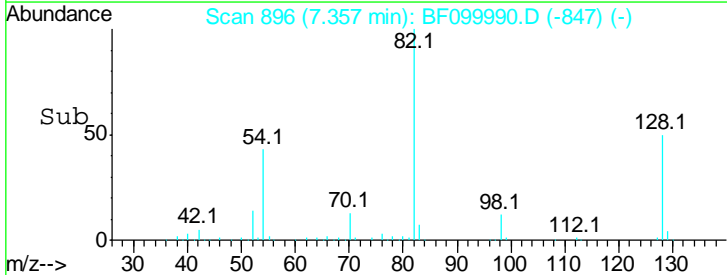
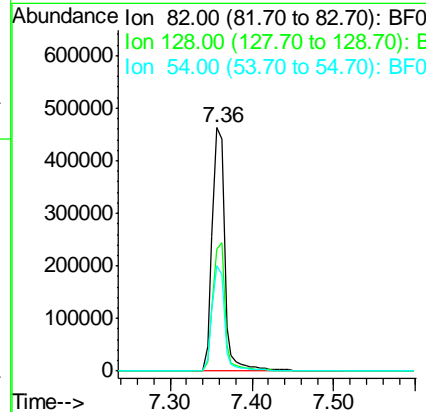
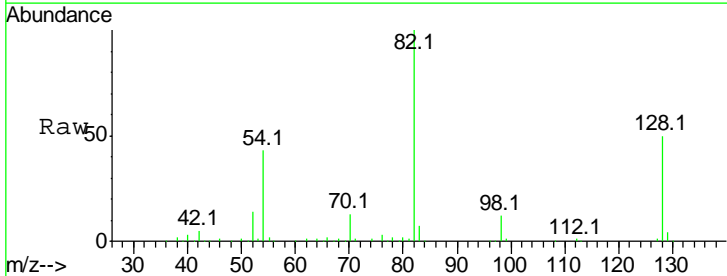
Ion	Ratio	Lower	Upper
136	100		
137	10.8	8.9	13.3
54	6.2	6.6	9.8#
68	5.7	5.0	7.4

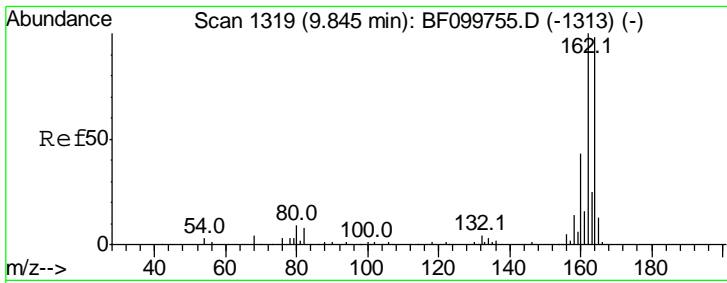


#23
 Nitrobenzene-d5
 Concen: 81.989 ng
 RT: 7.36 min Scan# 896
 Delta R.T. -0.01 min
 Lab File: BF099990.D
 Acq: 31 Oct 2017 5:27

Tgt Ion: 82 Resp: 500662

Ion	Ratio	Lower	Upper
82	100		
128	50.2	36.1	54.1
54	43.5	41.4	62.2

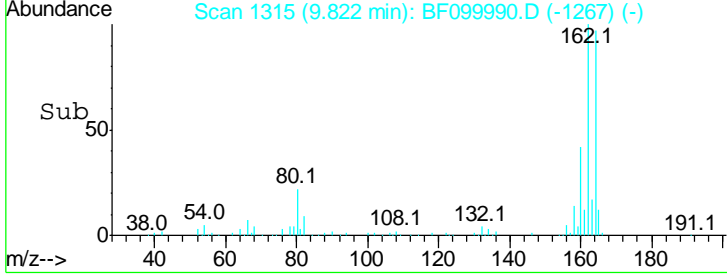
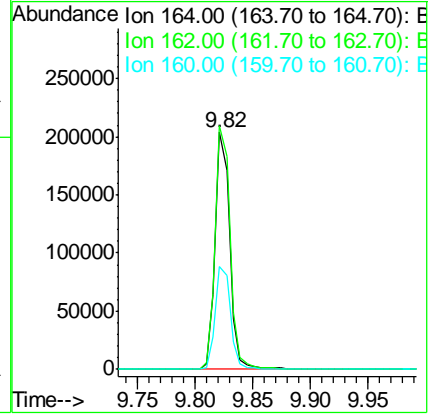
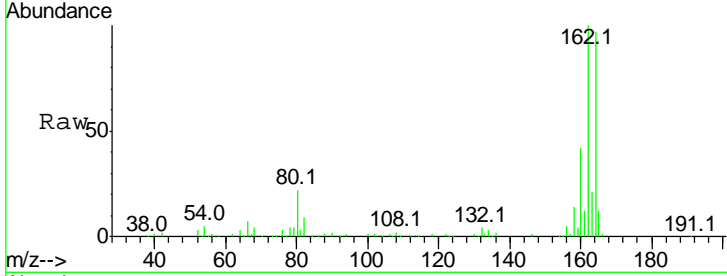




#38
 Acenaphthene-d10
 Concen: 20.000 ng
 RT: 9.82 min Scan# 1315
 Delta R.T. -0.02 min
 Lab File: BF099990.D
 Acq: 31 Oct 2017 5:27

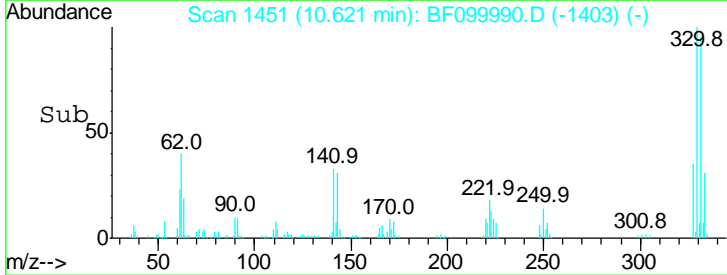
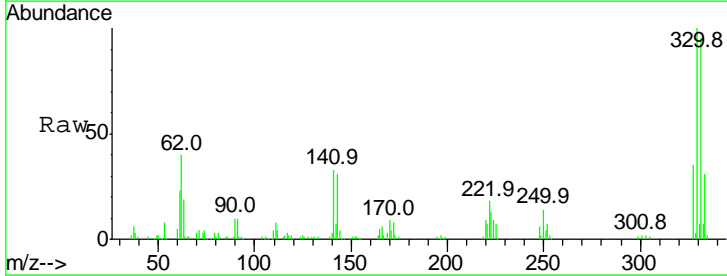
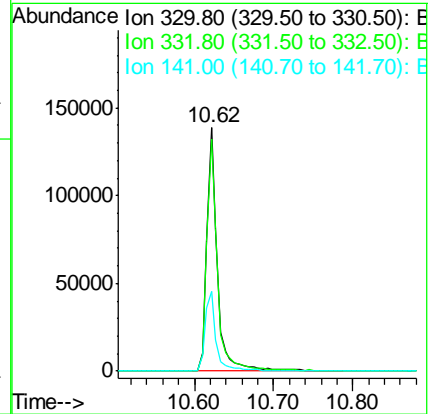
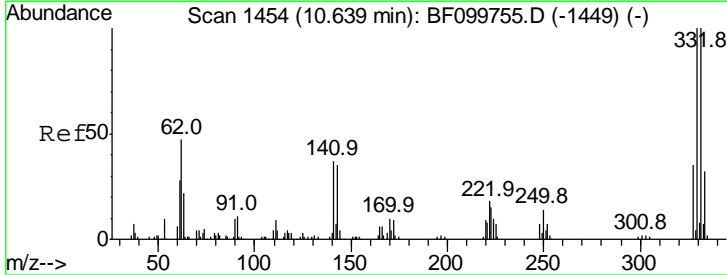
Instrument :
 BNA_F
ClientSampled :
 102017-SIDI-F-U-S

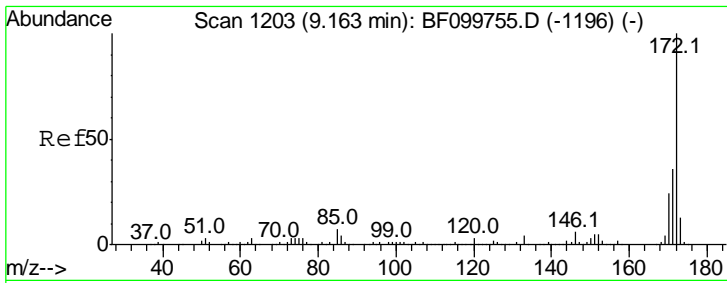
Tgt Ion	Resp	Lower	Upper
164	100		
162	102.8	86.1	129.1
160	43.3	38.3	57.5



#41
 2,4,6-Tribromophenol
 Concen: 80.852 ng
 RT: 10.62 min Scan# 1451
 Delta R.T. -0.02 min
 Lab File: BF099990.D
 Acq: 31 Oct 2017 5:27

Tgt Ion	Resp	Lower	Upper
330	100		
332	97.0	77.0	115.6
141	34.2	29.9	44.9



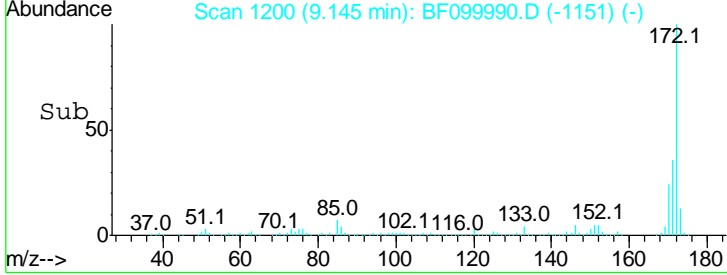
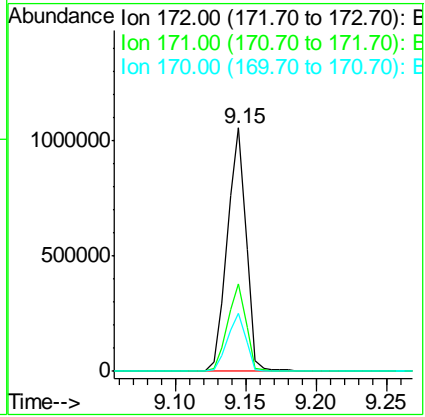
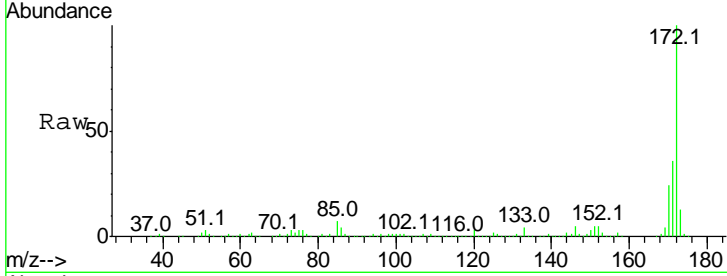


#44
 2-Fluorobiphenyl
 Concen: 84.185 ng
 RT: 9.15 min Scan# 1200
 Delta R.T. -0.01 min
 Lab File: BF099990.D
 Acq: 31 Oct 2017 5:27

Instrument :
 BNA_F
 ClientSampled :
 102017-SIDI-F-U-S

Tgt Ion:172 Resp: 981403

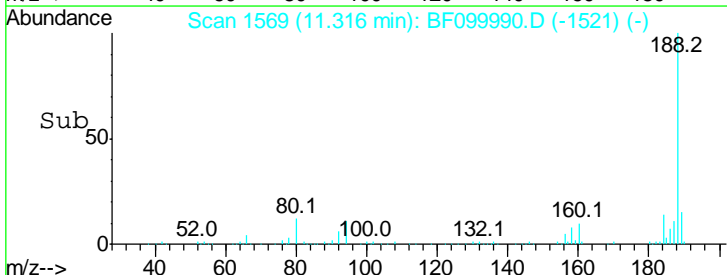
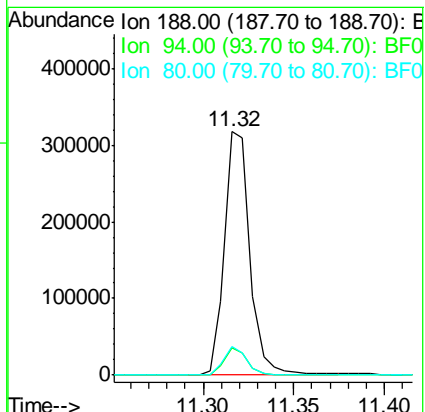
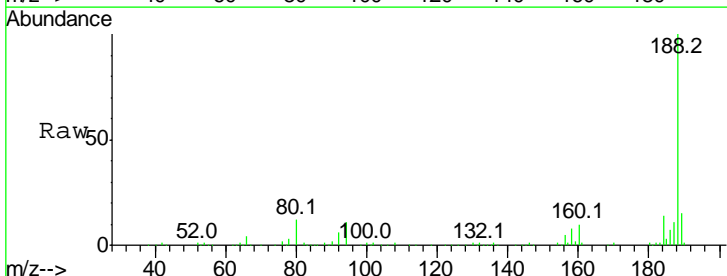
Ion	Ratio	Lower	Upper
172	100		
171	35.7	29.7	44.5
170	23.7	19.6	29.4

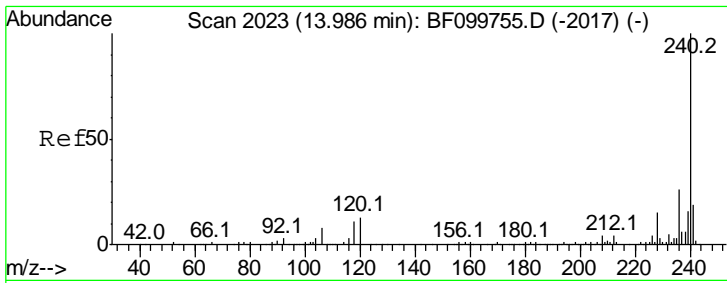


#63
 Phenanthrene-d10
 Concen: 20.000 ng
 RT: 11.32 min Scan# 1569
 Delta R.T. -0.02 min
 Lab File: BF099990.D
 Acq: 31 Oct 2017 5:27

Tgt Ion:188 Resp: 312424

Ion	Ratio	Lower	Upper
188	100		
94	11.2	8.5	12.7
80	11.8	9.2	13.8

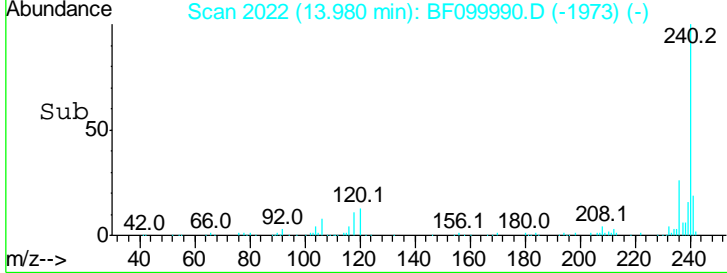
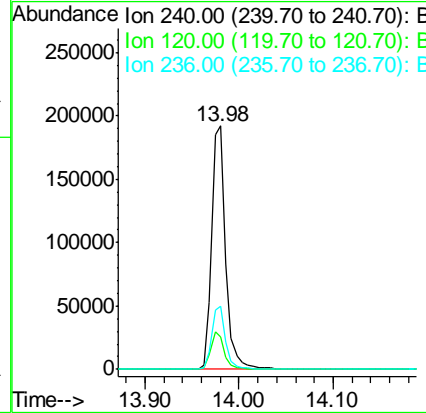
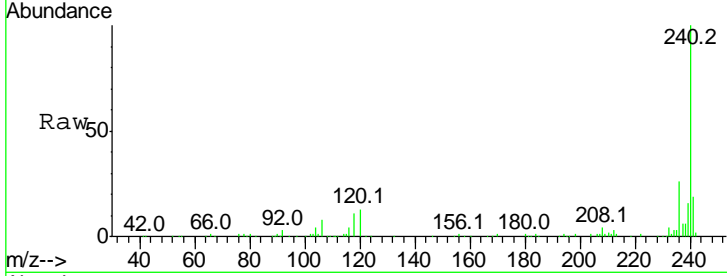




#75
 Chrysene-d12
 Concen: 20.000 ng
 RT: 13.98 min Scan# 2022
 Delta R.T. -0.01 min
 Lab File: BF099990.D
 Acq: 31 Oct 2017 5:27

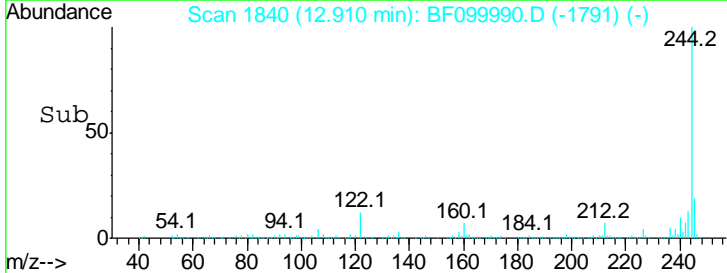
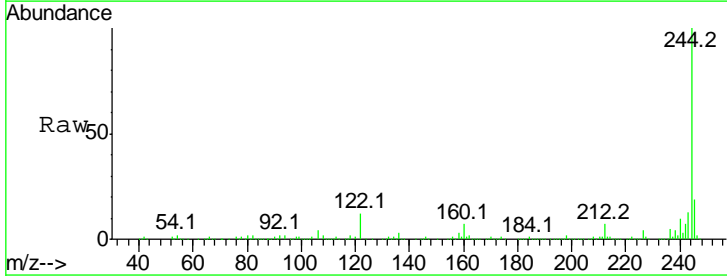
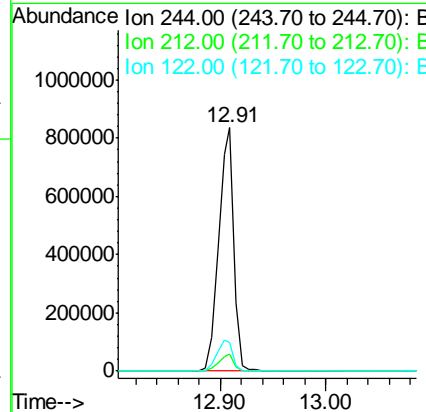
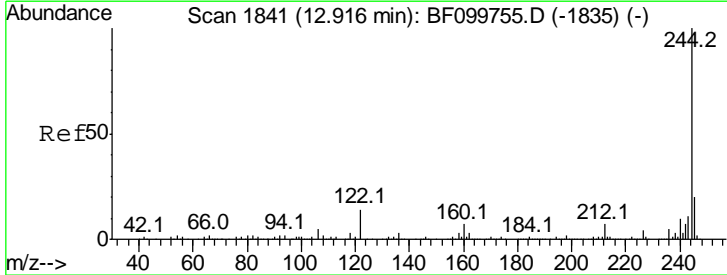
Instrument :
 BNA_F
 ClientSampleId :
 102017-SIDI-F-U-S

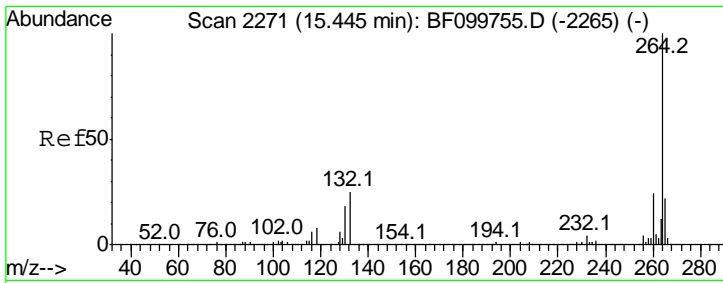
Tgt Ion	Resp	Lower	Upper
240	100		
120	13.1	9.5	14.3
236	26.0	20.7	31.1



#78
 Terphenyl-d14
 Concen: 91.866 ng
 RT: 12.91 min Scan# 1840
 Delta R.T. -0.01 min
 Lab File: BF099990.D
 Acq: 31 Oct 2017 5:27

Tgt Ion	Resp	Lower	Upper
244	100		
212	6.8	5.4	8.0
122	11.9	11.0	16.4





#86
 Perylene-d12
 Concen: 20.000 ng
 RT: 15.47 min Scan# 2275
 Delta R.T. 0.01 min
 Lab File: BF099990.D
 Acq: 31 Oct 2017 5:27

Instrument :
 BNA_F
ClientSampled :
 102017-SIDI-F-U-S

Tot Ion	Ion	Ratio	Lower	Upper
264	264	100		
260	260	23.9	19.2	28.8
265	265	20.6	17.5	26.3

