

Data Path : Z:\SVOASRV\HPCHEM1\BNA F\DATA\BF103019\  
 Data File : BF117642.D  
 Acq On : 31 Oct 2019 3:34  
 Operator : JU  
 Sample : PB124409BL  
 Misc :  
 ALS Vial : 26 Sample Multiplier: 1

Instrument :  
 BNA\_F  
 ClientSampleId :

Quant Time: Oct 31 07:58:22 2019  
 Quant Method : Z:\SVOASRV\HPCHEM1\BNA F\METHODS\8270-BF101819.M  
 Quant Title : ASP BNA STANDARDS FOR 5 POINT CALIBRATION  
 QLast Update : Fri Oct 18 18:53:31 2019  
 Response via : Initial Calibration

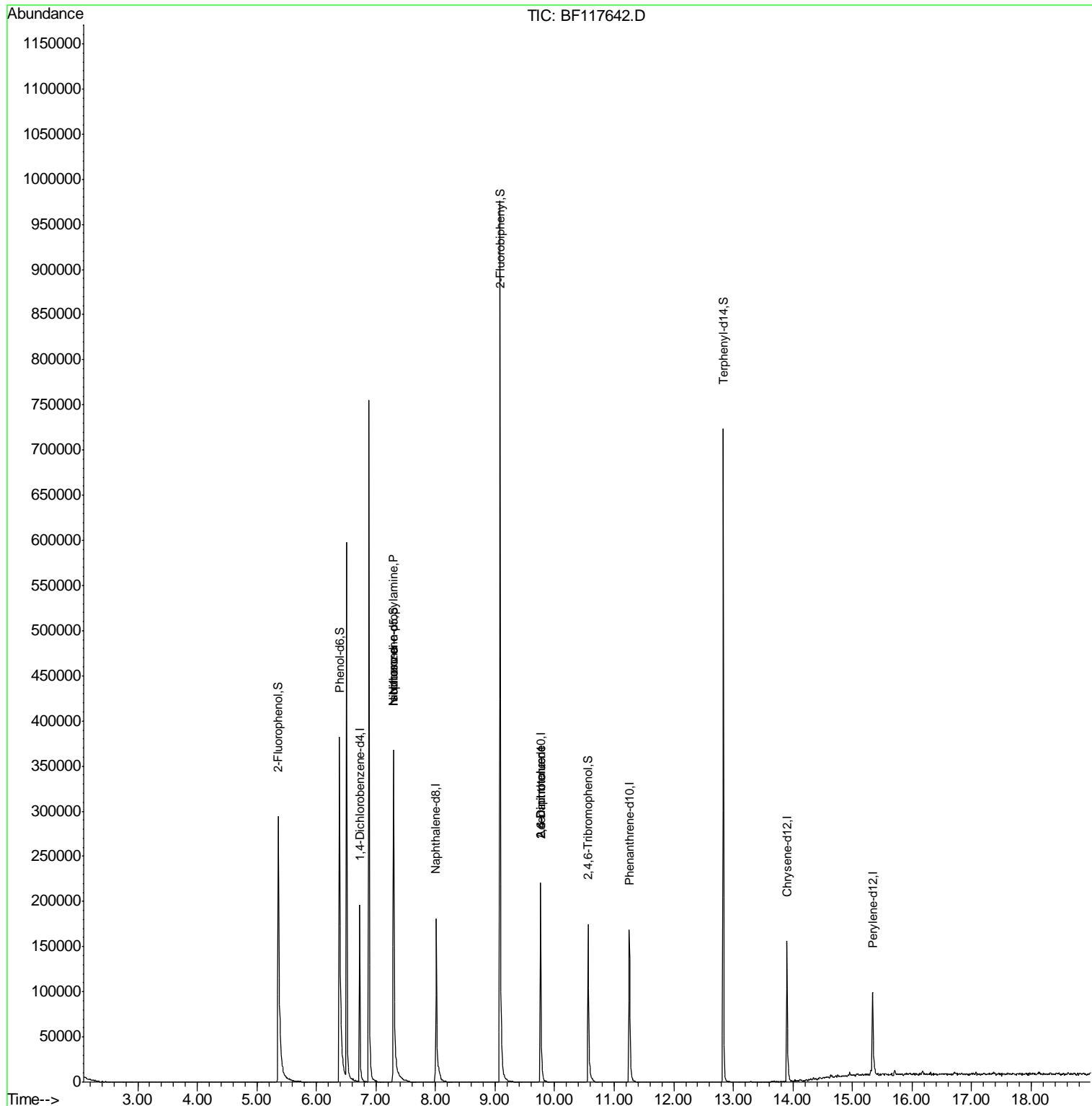
Internal Standards	R.T.	QIon	Response	Conc	Units	Dev(Min)
1) 1,4-Dichlorobenzene-d4	6.73	152	34062	20.00	ng	0.00
21) Naphthalene-d8	8.01	136	130365	20.00	ng	0.00
39) Acenaphthene-d10	9.76	164	63863	20.00	ng	0.00
64) Phenanthrene-d10	11.25	188	90599	20.00	ng	0.00
76) Chrysene-d12	13.90	240	67065	20.00	ng	0.00
87) Perylene-d12	15.34	264	58338	20.00	ng	0.02
System Monitoring Compounds						
5) 2-Fluorophenol	5.36	112	161002	70.32	ng	0.00
7) Phenol-d6	6.39	99	227845	74.09	ng	0.00
23) Nitrobenzene-d5	7.29	82	190550	72.16	ng	-0.01
42) 2,4,6-Tribromophenol	10.56	330	29979	54.25	ng	0.00
45) 2-Fluorobiphenyl	9.08	172	346590	76.47	ng	-0.01
79) Terphenyl-d14	12.83	244	266601	64.84	ng	0.00
Target Compounds						
9) Benzaldehyde	6.50	77	4375	Below Cal		88
19) n-Nitroso-di-n-propylamine	7.29	70	25378	13.513 ng	#	72
25) Isophorone	7.29	82	190548	41.712 ng	#	65
51) 2,6-Dinitrotoluene	9.76	165	7911	8.327 ng	#	22
57) 2,4-Dinitrotoluene	9.76	165	7911	6.263 ng	#	12
77) Benzidine	12.83	184	3580	Below Cal	#	97

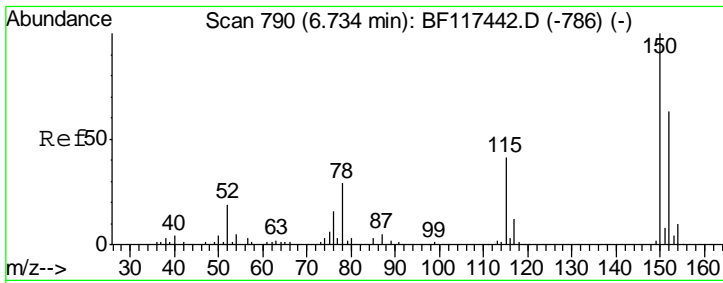
(#) = qualifier out of range (m) = manual integration (+) = signals summed

Data Path : Z:\SVOASRV\HPCHEM1\BNA F\DATA\BF103019\  
 Data File : BF117642.D  
 Acq On : 31 Oct 2019 3:34  
 Operator : JU  
 Sample : PB124409BL  
 Misc :  
 ALS Vial : 26 Sample Multiplier: 1

Instrument :  
 BNA\_F  
 ClientSampleId :

Quant Time: Oct 31 07:58:22 2019  
 Quant Method : Z:\SVOASRV\HPCHEM1\BNA F\METHODS\8270-BF101819.M  
 Quant Title : ASP BNA STANDARDS FOR 5 POINT CALIBRATION  
 QLast Update : Fri Oct 18 18:53:31 2019  
 Response via : Initial Calibration



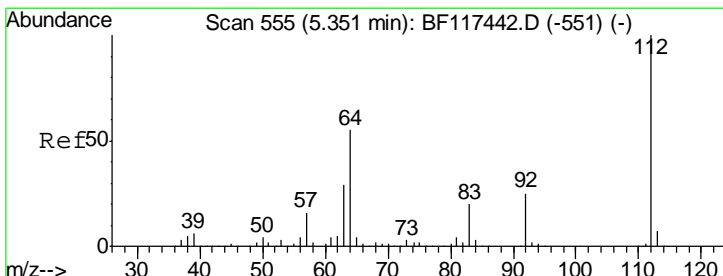
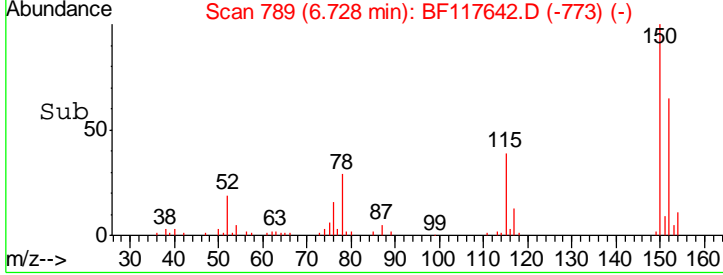
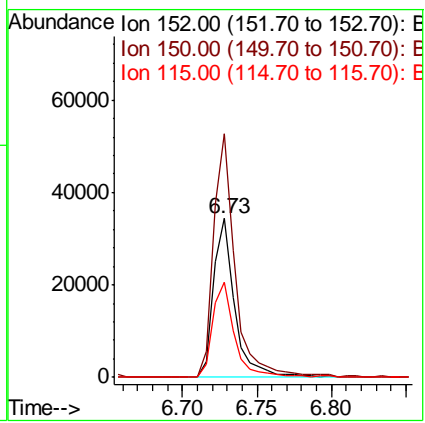
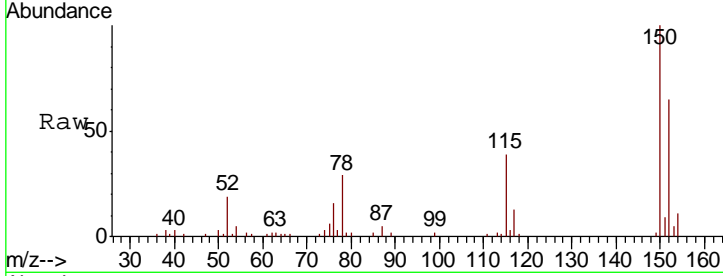


#1  
 1,4-Dichlorobenzene-d4  
 Concen: 20.000 ng  
 RT: 6.73 min Scan# 789  
 Delta R.T. -0.01 min  
 Lab File: BF117642.D  
 Acq: 31 Oct 2019 3:34

Instrument :  
 BNA\_F  
 ClientSampled :

Tot Ion:152 Resp: 34062

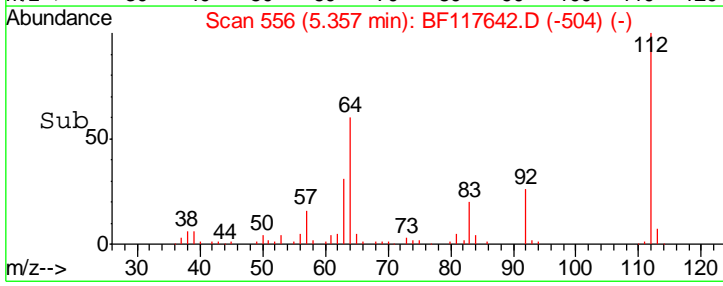
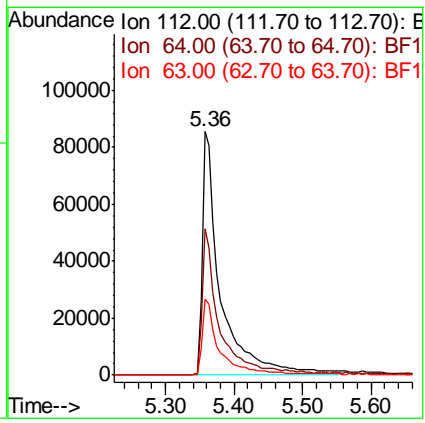
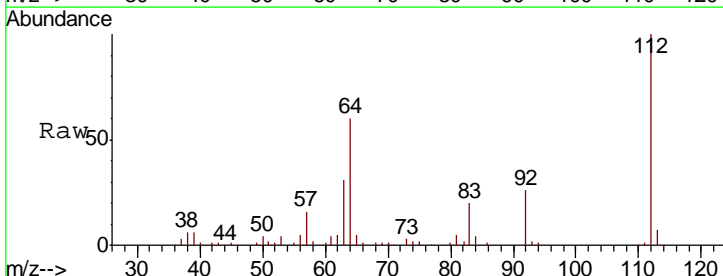
Ion	Ratio	Lower	Upper
152	100		
150	153.4	126.8	190.2
115	59.9	51.6	77.4

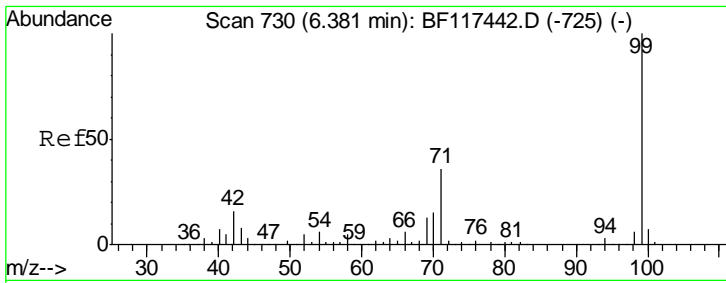


#5  
 2-Fluorophenol  
 Concen: 70.320 ng  
 RT: 5.36 min Scan# 556  
 Delta R.T. 0.01 min  
 Lab File: BF117642.D  
 Acq: 31 Oct 2019 3:34

Tgt Ion:112 Resp: 161002

Ion	Ratio	Lower	Upper
112	100		
64	59.9	44.1	66.1
63	31.1	23.4	35.2

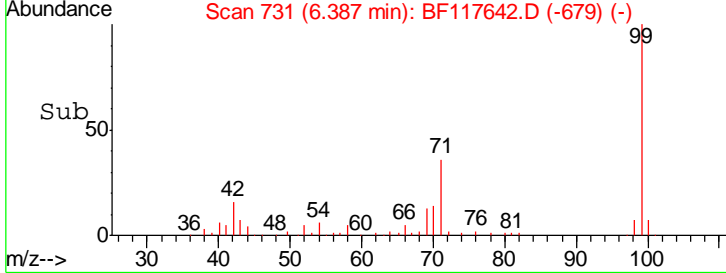
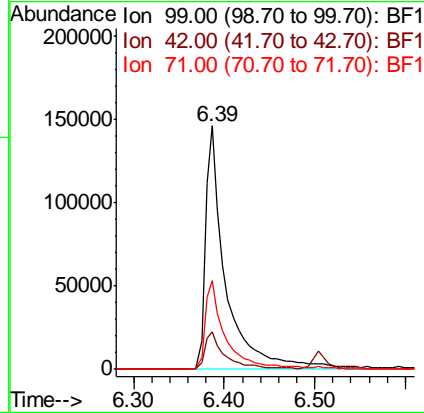
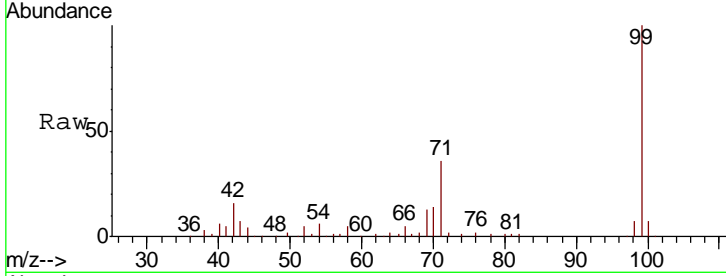




#7  
 Phenol-d6  
 Concen: 74.092 ng  
 RT: 6.39 min Scan# 731  
 Delta R.T. 0.01 min  
 Lab File: BF117642.D  
 Acq: 31 Oct 2019 3:34

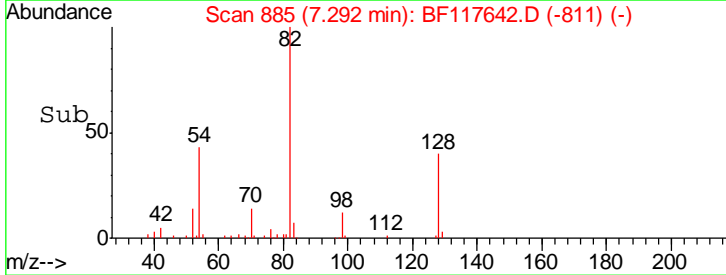
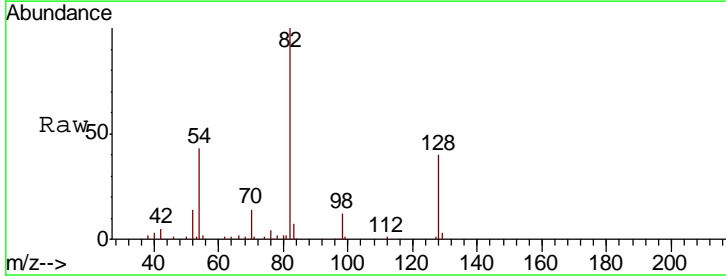
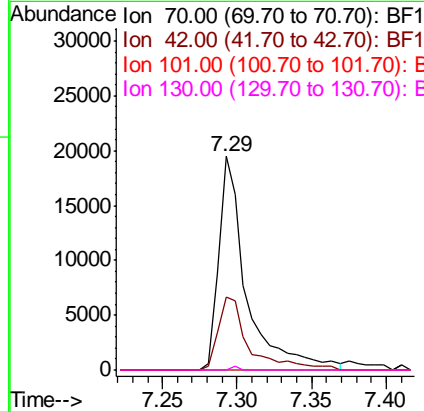
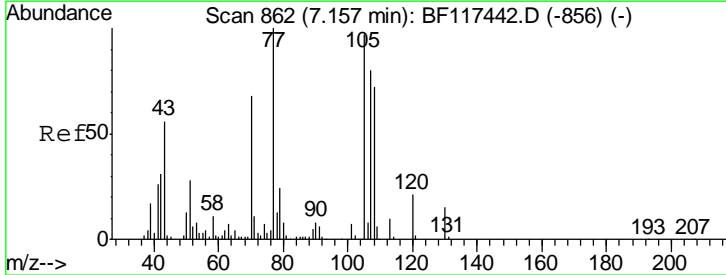
Instrument :  
 BNA\_F  
 ClientSampled :

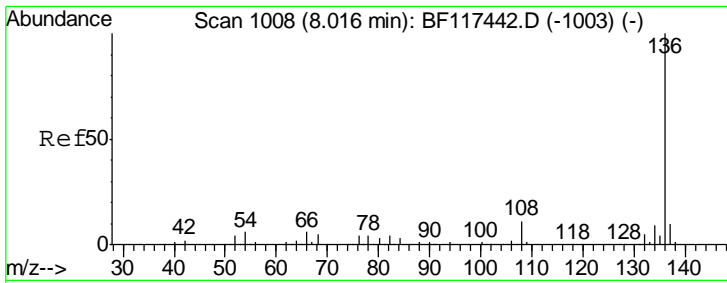
Tgt Ion	Resp	Lower	Upper
99	227845		
42	15.6	12.8	19.2
71	36.3	28.6	43.0



#19  
 n-Nitroso-di-n-propylamine  
 Concen: 13.513 ng  
 RT: 7.29 min Scan# 885  
 Delta R.T. 0.14 min  
 Lab File: BF117642.D  
 Acq: 31 Oct 2019 3:34

Tgt Ion	Resp	Lower	Upper
70	25378		
42	34.0	36.7	55.1#
101	0.0	8.3	12.5#
130	0.0	18.1	27.1#



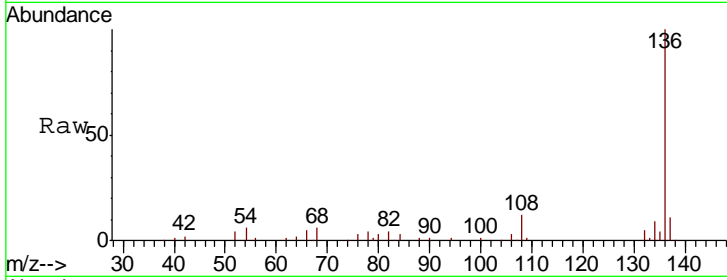


#21  
 Naphthalene-d8  
 Concen: 20.000 ng  
 RT: 8.01 min Scan# 1007  
 Delta R.T. -0.01 min  
 Lab File: BF117642.D  
 Acq: 31 Oct 2019 3:34

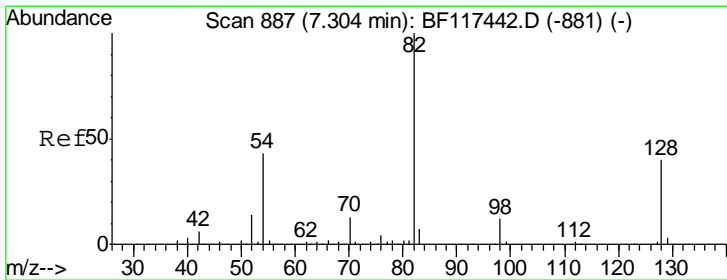
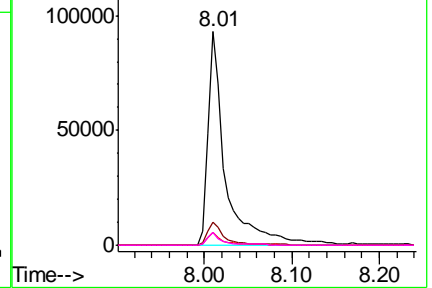
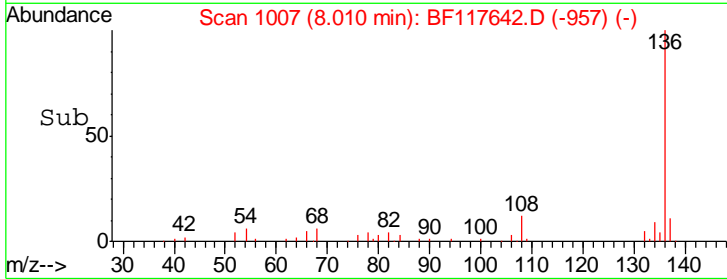
Instrument :  
 BNA\_F  
 ClientSampled :

Tgt Ion: 136 Resp: 130365

Ion	Ratio	Lower	Upper
136	100		
137	10.7	8.2	12.4
54	5.8	4.5	6.7
68	5.8	4.3	6.5



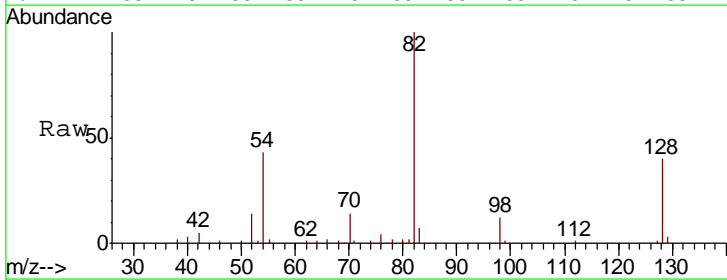
Abundance Ion 136.00 (135.70 to 136.70): E  
 Ion 137.00 (136.70 to 137.70): E  
 Ion 54.00 (53.70 to 54.70): BF1  
 Ion 68.00 (67.70 to 68.70): BF1



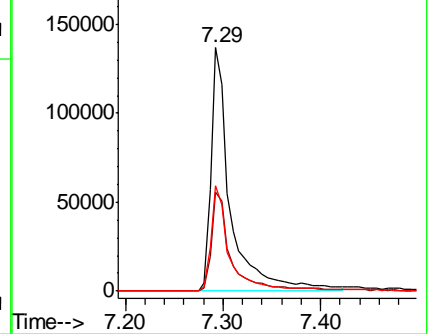
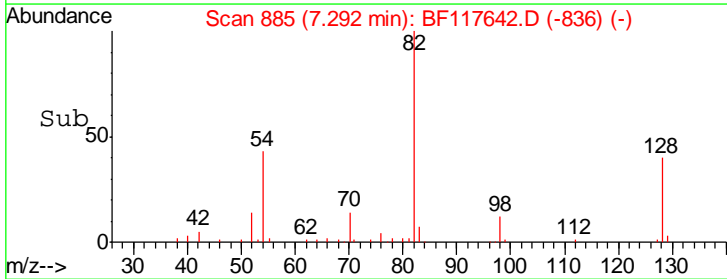
#23  
 Nitrobenzene-d5  
 Concen: 72.159 ng  
 RT: 7.29 min Scan# 885  
 Delta R.T. -0.01 min  
 Lab File: BF117642.D  
 Acq: 31 Oct 2019 3:34

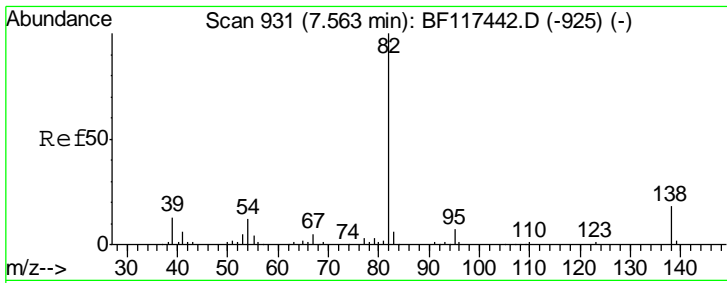
Tgt Ion: 82 Resp: 190550

Ion	Ratio	Lower	Upper
82	100		
128	40.4	32.2	48.2
54	43.2	34.2	51.2



Abundance Ion 82.00 (81.70 to 82.70): BF1  
 Ion 128.00 (127.70 to 128.70): E  
 Ion 54.00 (53.70 to 54.70): BF1

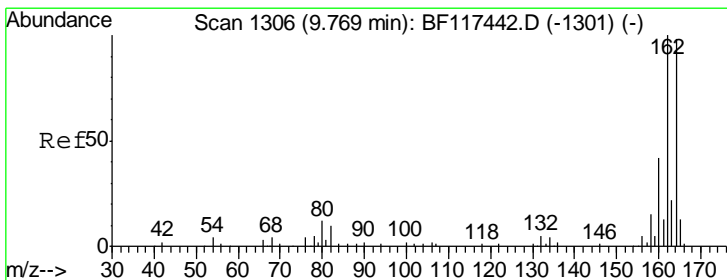
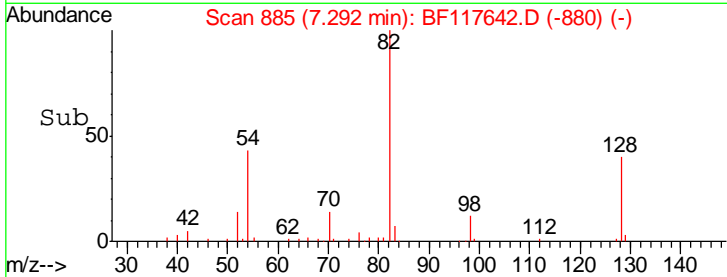
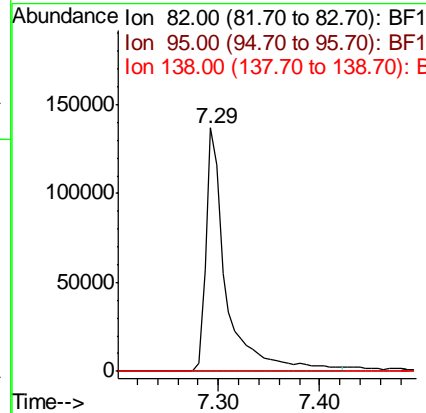
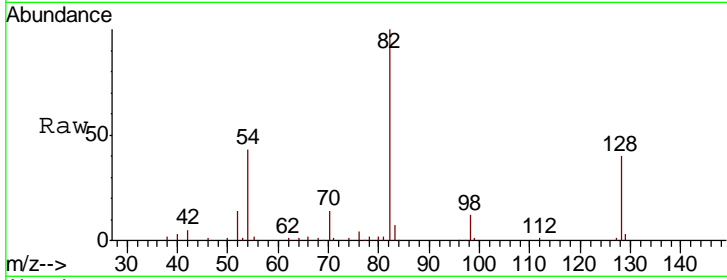




#25  
 Isophorone  
 Concen: 41.712 ng  
 RT: 7.29 min Scan# 885  
 Delta R.T. -0.27 min  
 Lab File: BF117642.D  
 Acq: 31 Oct 2019 3:34

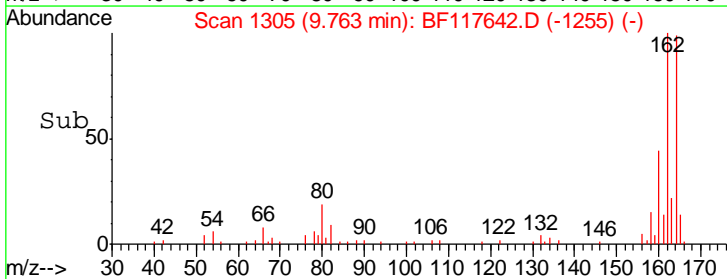
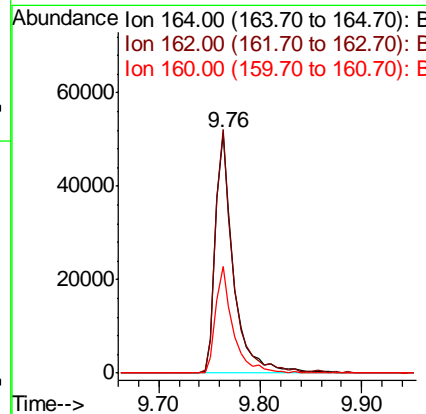
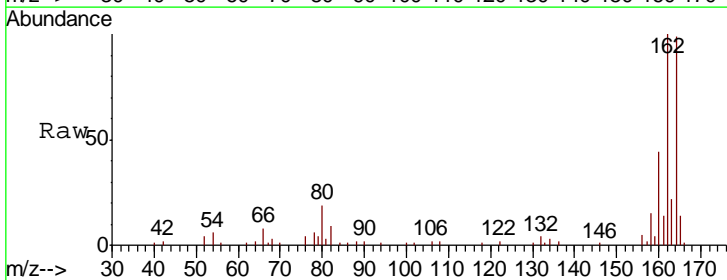
Instrument :  
 BNA\_F  
 ClientSampled :

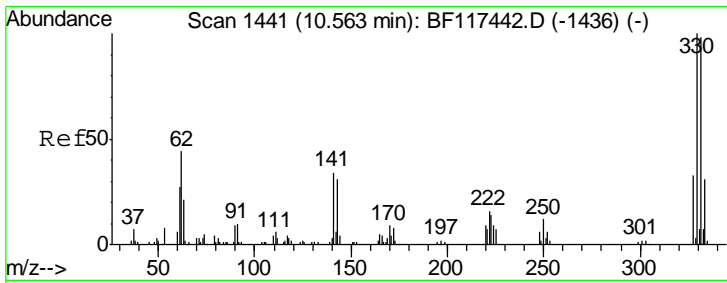
Tgt Ion	Resp	Lower	Upper
82	190548		
95	0.0	5.4	8.0#
138	0.0	14.2	21.2#



#39  
 Acenaphthene-d10  
 Concen: 20.000 ng  
 RT: 9.76 min Scan# 1305  
 Delta R.T. -0.01 min  
 Lab File: BF117642.D  
 Acq: 31 Oct 2019 3:34

Tgt Ion	Resp	Lower	Upper
164	63863		
162	101.3	81.8	122.6
160	44.6	34.4	51.6

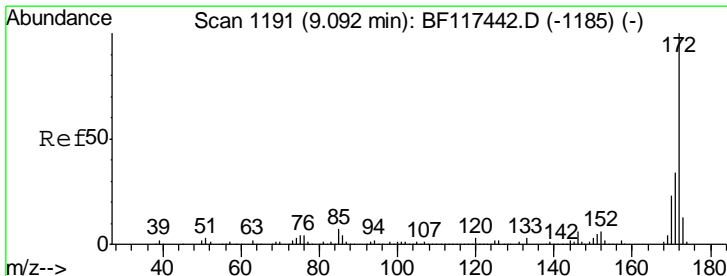
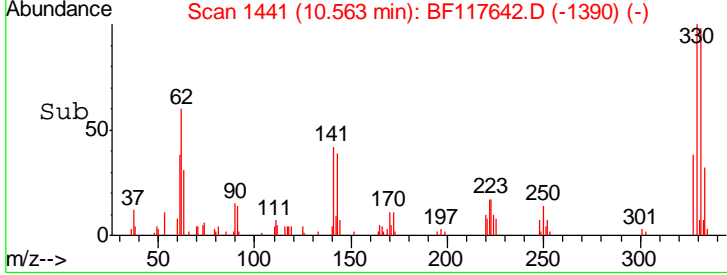
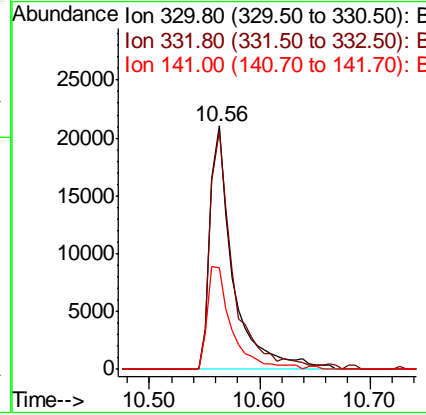
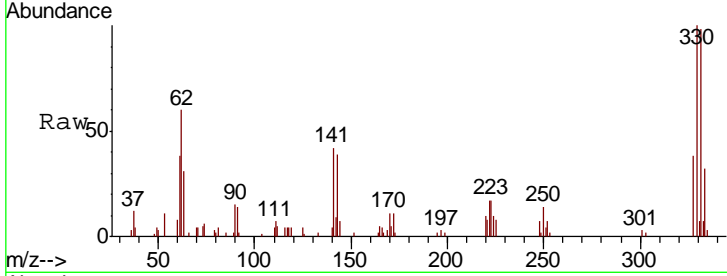




#42  
 2,4,6-Tribromophenol  
 Concen: 54.253 ng  
 RT: 10.56 min Scan# 1441  
 Delta R.T. 0.00 min  
 Lab File: BF117642.D  
 Acq: 31 Oct 2019 3:34

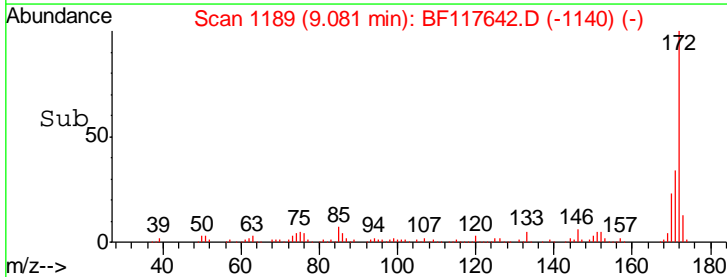
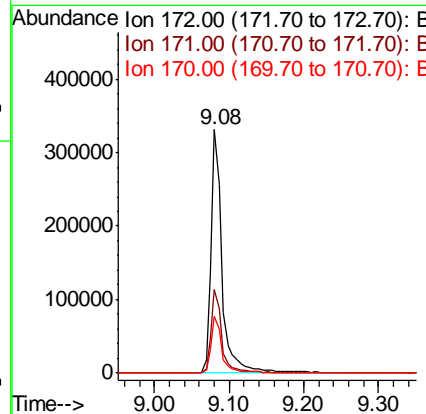
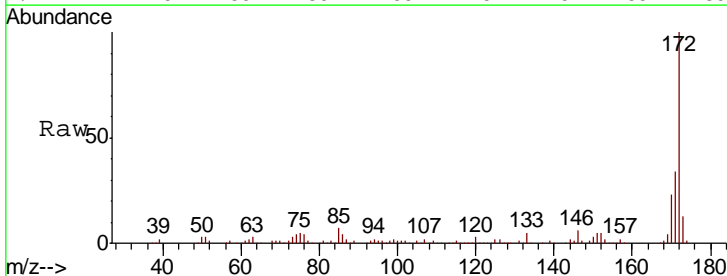
Instrument :  
 BNA\_F  
 ClientSampleId :

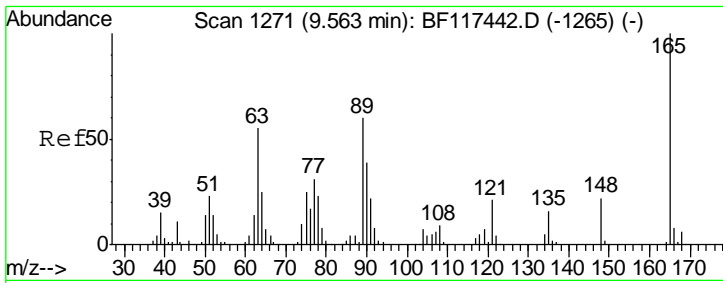
Tgt Ion	Resp	Lower	Upper
330	100		
332	97.6	78.5	117.7
141	43.9	37.0	55.6



#45  
 2-Fluorobiphenyl  
 Concen: 76.467 ng  
 RT: 9.08 min Scan# 1189  
 Delta R.T. -0.01 min  
 Lab File: BF117642.D  
 Acq: 31 Oct 2019 3:34

Tgt Ion	Resp	Lower	Upper
172	100		
171	34.3	27.5	41.3
170	23.3	18.6	27.8

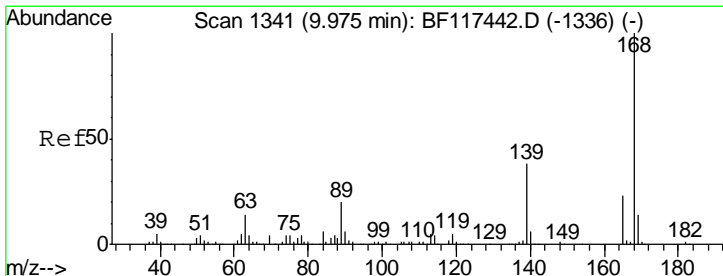
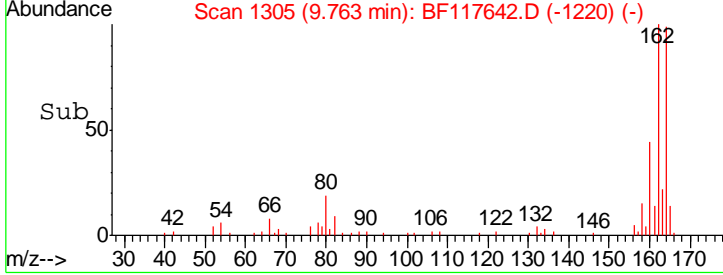
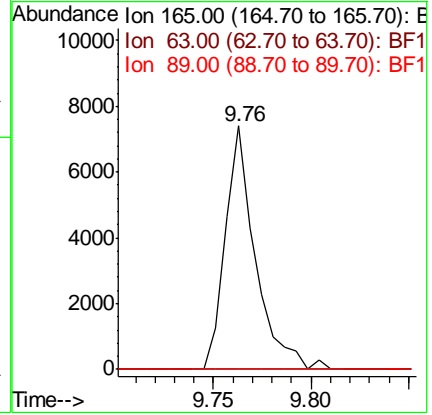
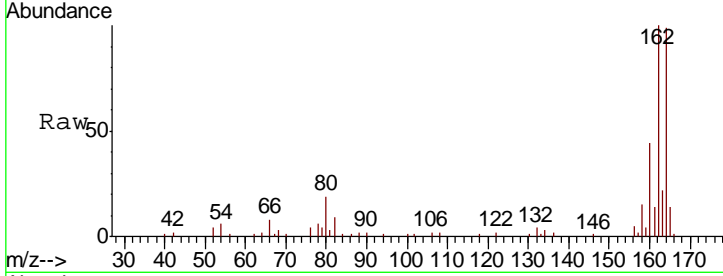




#51  
 2,6-Dinitrotoluene  
 Concen: 8.327 ng  
 RT: 9.76 min Scan# 1305  
 Delta R.T. 0.20 min  
 Lab File: BF117642.D  
 Acq: 31 Oct 2019 3:34

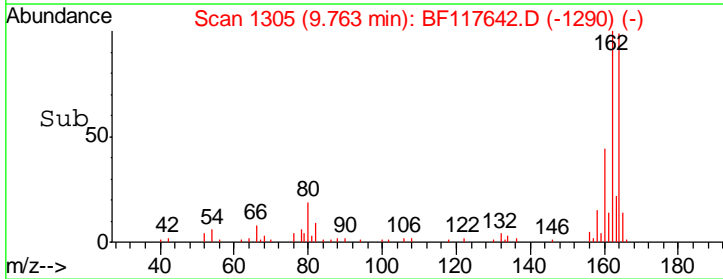
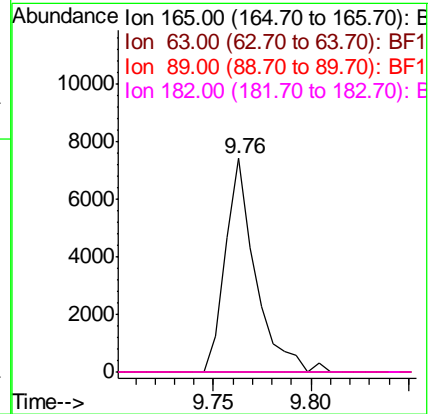
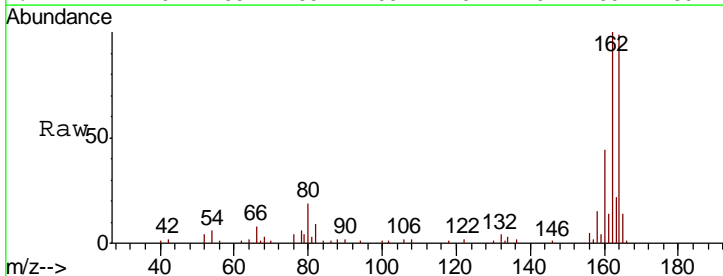
Instrument :  
 BNA\_F  
 ClientSampled :

Tgt Ion	Resp	Lower	Upper
165	100		
63	0.0	43.8	65.8#
89	0.0	47.6	71.4#

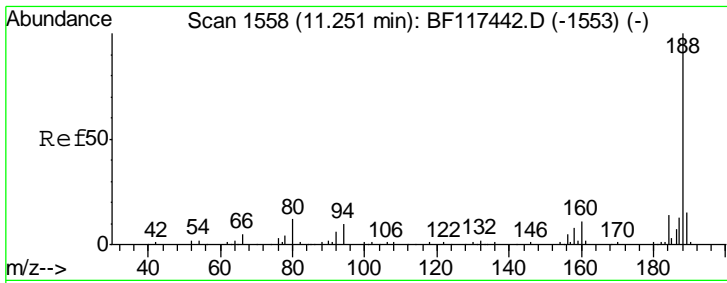


#57  
 2,4-Dinitrotoluene  
 Concen: 6.263 ng  
 RT: 9.76 min Scan# 1305  
 Delta R.T. -0.21 min  
 Lab File: BF117642.D  
 Acq: 31 Oct 2019 3:34

Tgt Ion	Resp	Lower	Upper
165	100		
63	0.0	51.4	77.0#
89	0.0	69.9	104.9#
182	0.0	1.9	2.9#



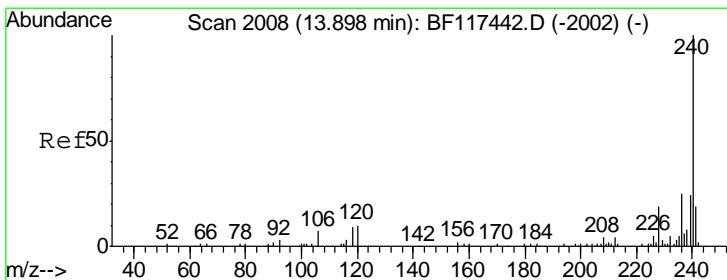
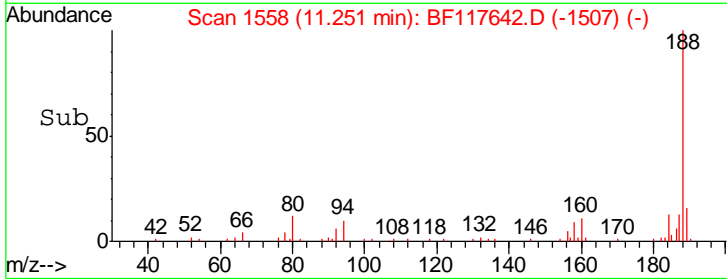
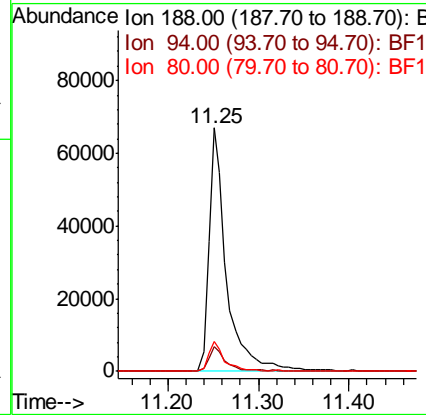
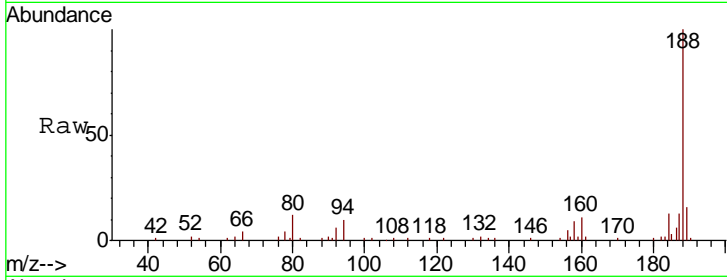




#64  
 Phenanthrene-d10  
 Concen: 20.000 ng  
 RT: 11.25 min Scan# 1558  
 Delta R.T. 0.00 min  
 Lab File: BF117642.D  
 Acq: 31 Oct 2019 3:34

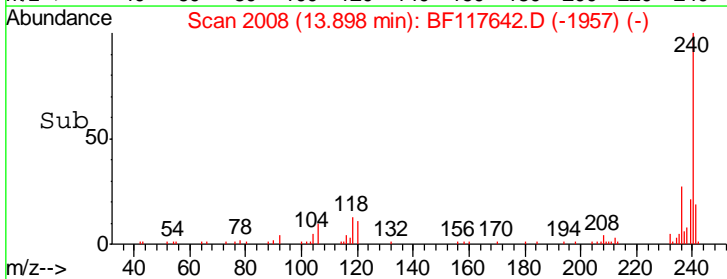
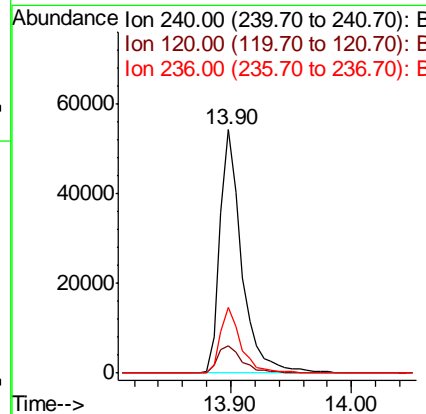
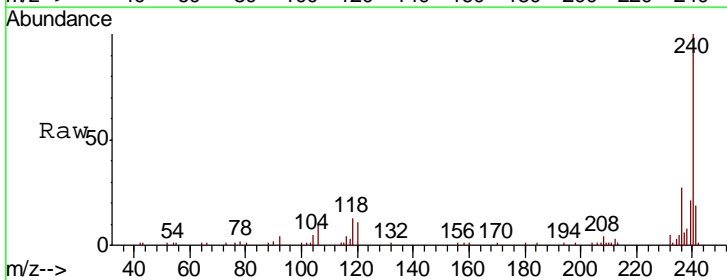
Instrument :  
 BNA\_F  
 ClientSampled :

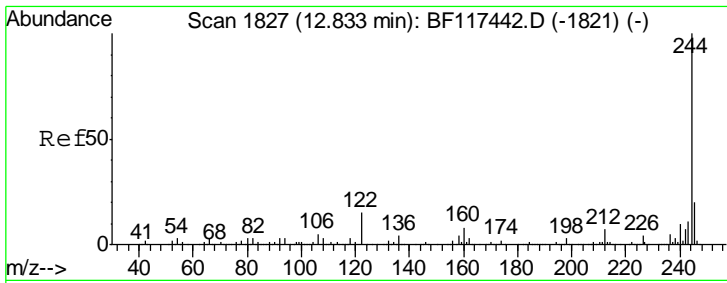
Tgt Ion	Resp	Lower	Upper
188	100		
94	10.0	8.0	12.0
80	12.4	9.5	14.3



#76  
 Chrysene-d12  
 Concen: 20.000 ng  
 RT: 13.90 min Scan# 2008  
 Delta R.T. 0.00 min  
 Lab File: BF117642.D  
 Acq: 31 Oct 2019 3:34

Tgt Ion	Resp	Lower	Upper
240	100		
120	11.3	8.4	12.6
236	27.0	20.0	30.0

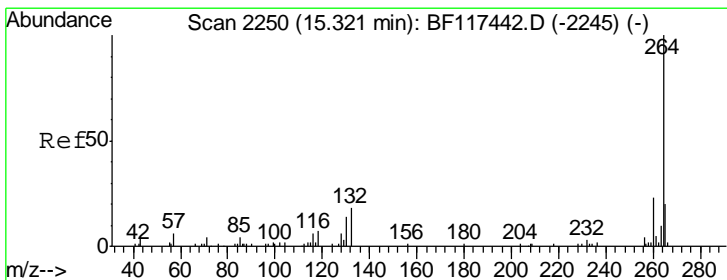
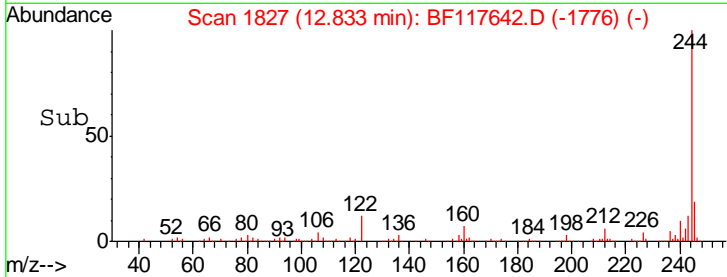
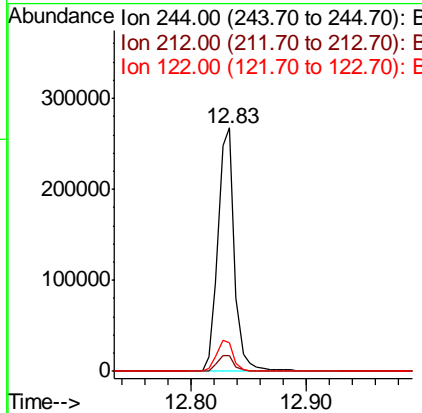
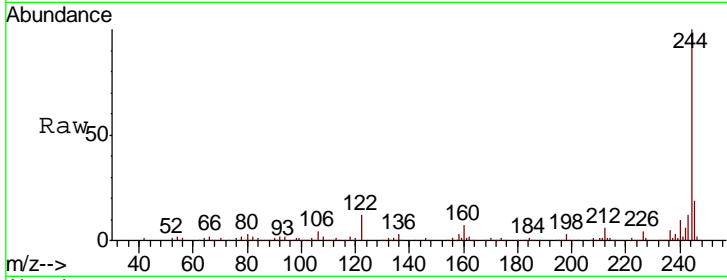




#79  
 Terphenyl-d14  
 Concen: 64.841 ng  
 RT: 12.83 min Scan# 1827  
 Delta R.T. 0.00 min  
 Lab File: BF117642.D  
 Acq: 31 Oct 2019 3:34

Instrument :  
 BNA\_F  
 ClientSampled :

Tgt Ion	Resp	Lower	Upper
244	100		
212	6.4	5.8	8.6
122	11.9	11.8	17.8



#87  
 Perylene-d12  
 Concen: 20.000 ng  
 RT: 15.34 min Scan# 2253  
 Delta R.T. 0.02 min  
 Lab File: BF117642.D  
 Acq: 31 Oct 2019 3:34

Tgt Ion	Resp	Lower	Upper
264	100		
260	24.3	18.4	27.6
265	23.6	16.1	24.1

