

Data Path : Z:\HPCHEM1\BNA F\DATA\BF103117\
 Data File : BF100028.D
 Acq On : 1 Nov 2017 5:37
 Operator : SJ/JU
 Sample : PB103271TB
 Misc :
 ALS Vial : 29 Sample Multiplier: 1

Instrument :
 BNA_F
 ClientSampleId :
 PB103271TB

Integration Parameters: rteint.p
 Integrator: RTE
 Smoothing : ON Filtering: 5
 Sampling : 1 Min Area: 3 % of largest Peak
 Start Thrs: 0.2 Max Peaks: 100
 Stop Thrs : 0 Peak Location: TOP

If leading or trailing edge < 100 prefer < Baseline drop else tangent >
 Peak separation: 5

Method : Z:\HPCHEM1\BNA F\METHODS\8270-BF102317.M
 Title : ASP BNA STANDARDS FOR 5 POINT CALIBRATION

Signal : TIC

peak #	R.T. min	first scan	max scan	last scan	PK TY	peak height	corr. area	corr. % max.	% of total
1	5.022	495	499	515	rBV	157174	274576	11.39%	1.504%
2	5.416	563	566	598	rBV	1621317	1935220	80.30%	10.598%
3	6.434	735	739	757	rBV	1692688	1904849	79.04%	10.431%
4	6.563	757	761	773	rVB	2152076	1976667	82.02%	10.824%
5	6.786	796	799	815	rVB	553073	484249	20.09%	2.652%
6	6.939	821	825	848	rBB	1715832	1639118	68.01%	8.976%
7	7.357	892	896	913	rBV	1138643	1177700	48.87%	6.449%
8	8.069	1014	1017	1031	rBV	727296	668172	27.73%	3.659%
9	9.145	1195	1200	1203	rBV	2635250	2409959	100.00%	13.197%
10	9.827	1312	1316	1330	rVB	774425	744083	30.88%	4.075%
11	10.622	1448	1451	1465	rBV	1069035	1089541	45.21%	5.966%
12	11.321	1566	1570	1580	rBV	786049	719926	29.87%	3.942%
13	12.910	1835	1840	1843	rBV	2067561	2089453	86.70%	11.442%
14	13.980	2018	2022	2033	rBV	486732	519372	21.55%	2.844%
15	15.427	2262	2268	2271	rBV	30392	36318	1.51%	0.199%
16	15.468	2271	2275	2287	rVV	298089	426292	17.69%	2.334%
17	15.851	2333	2340	2344	rBV2	26746	41026	1.70%	0.225%
18	16.339	2419	2423	2429	rBV2	26041	43462	1.80%	0.238%
19	16.915	2514	2521	2528	rBV2	18742	39070	1.62%	0.214%
20	17.592	2627	2636	2645	rBV4	15447	42036	1.74%	0.230%

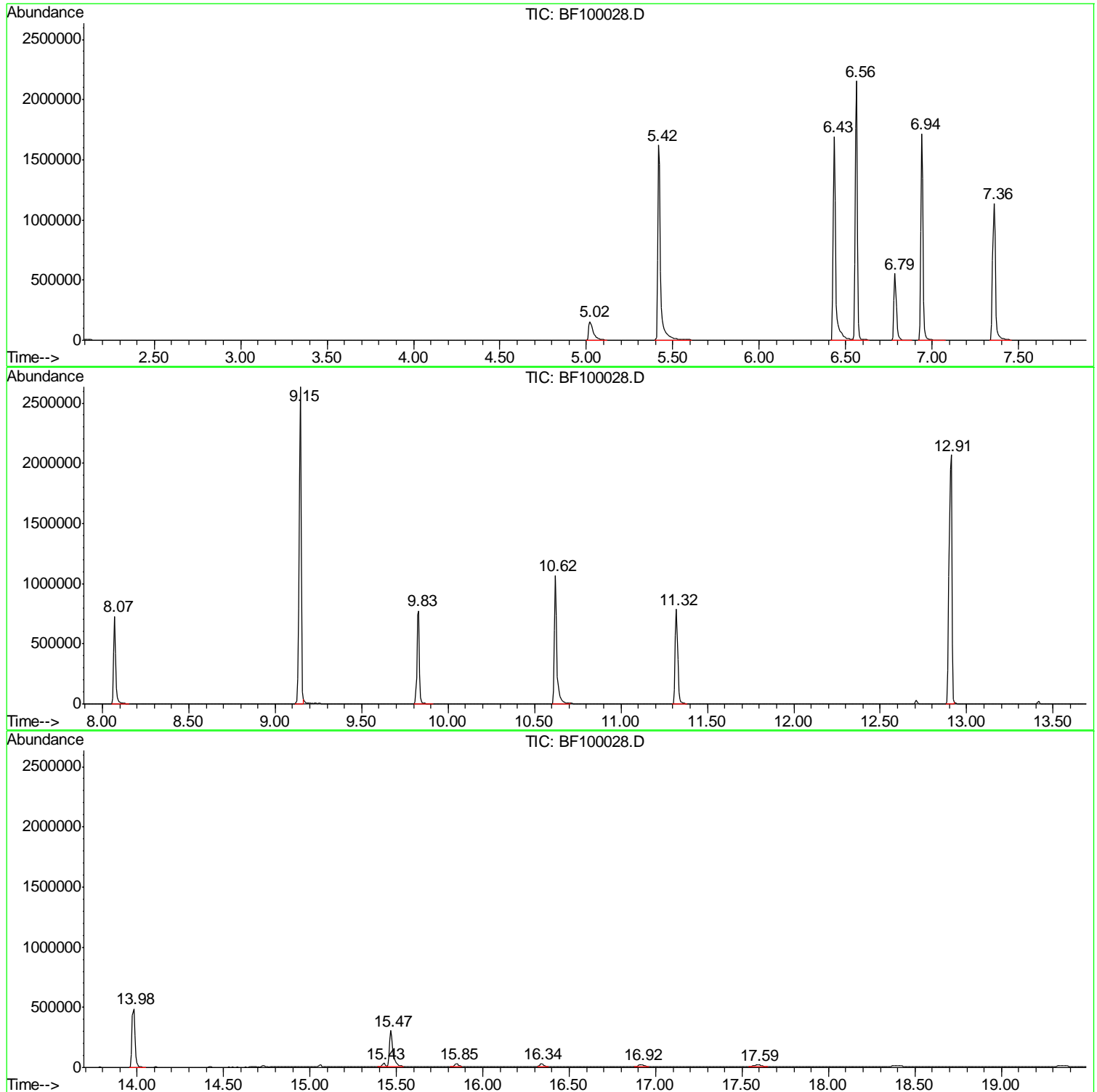
Sum of corrected areas: 18261089

Data Path : Z:\HPCHEM1\BNA F\DATA\BF103117\
Data File : BF100028.D
Acq On : 1 Nov 2017 5:37
Operator : SJ/JU
Sample : PB103271TB
Misc :
ALS Vial : 29 Sample Multiplier: 1

Instrument :
BNA_F
ClientSampleID :
PB103271TB

Quant Method : Z:\HPCHEM1\BNA F\METHODS\8270-BF102317.M
Quant Title : ASP BNA STANDARDS FOR 5 POINT CALIBRATION

TIC Library : C:\DATABASE\NIST11.L
TIC Integration Parameters: LSCINT.P



Data Path : Z:\HPCHEM1\BNA F\DATA\BF103117\
 Data File : BF100028.D
 Acq On : 1 Nov 2017 5:37
 Operator : SJ/JU
 Sample : PB103271TB
 Misc :
 ALS Vial : 29 Sample Multiplier: 1

Instrument :
 BNA_F
 ClientSampleID :
 PB103271TB

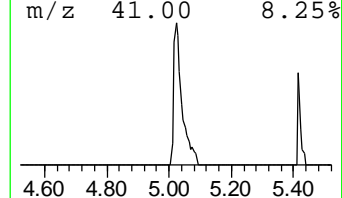
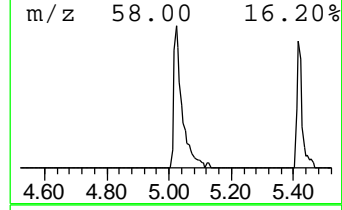
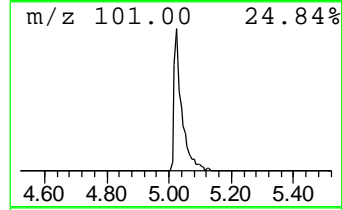
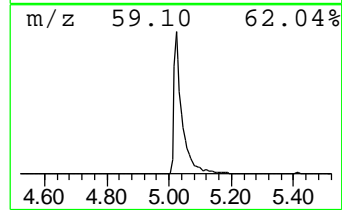
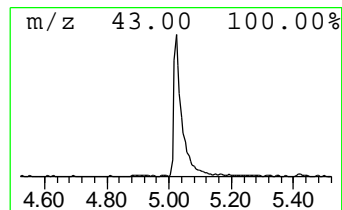
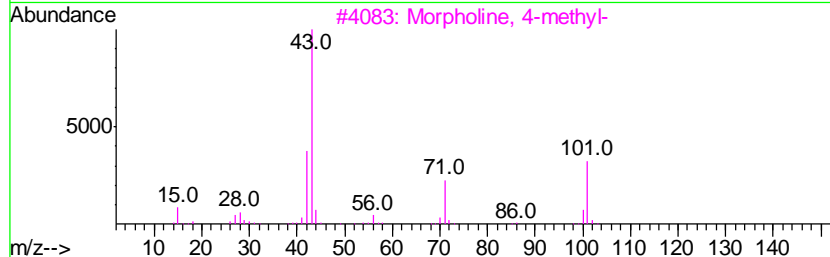
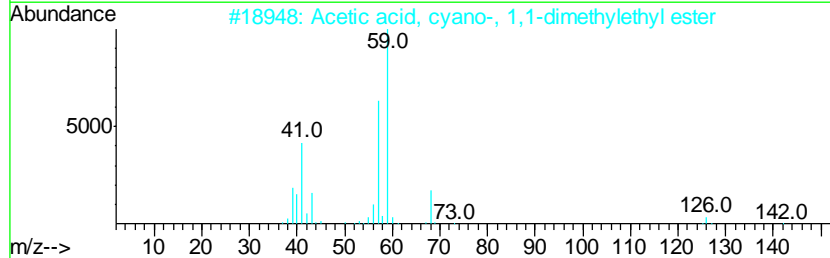
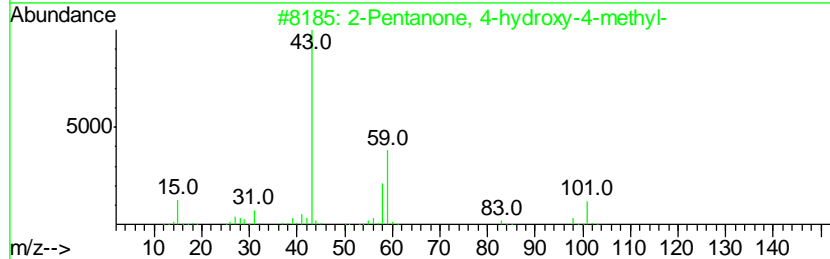
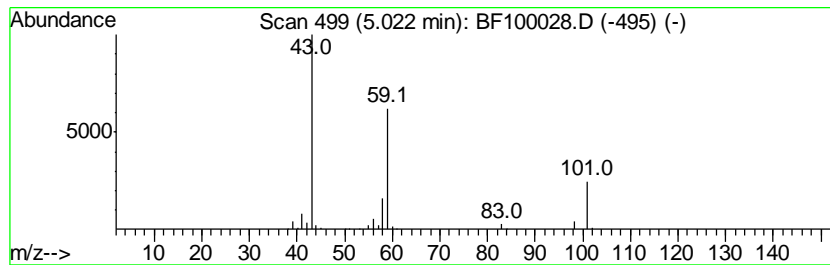
Quant Method : Z:\HPCHEM1\BNA F\METHODS\8270-BF102317.M
 Quant Title : ASP BNA STANDARDS FOR 5 POINT CALIBRATION

TIC Library : C:\DATABASE\NIST11.L
 TIC Integration Parameters: LSCINT.P

 Peak Number 1 2-Pentanone, 4-hydroxy-4-me... Concentration Rank 3

R.T.	EstConc	Area	Relative to ISTD	R.T.
5.02	11.34 ng	274576	1,4-Dichlorobenzene-d4	6.79

Hit#	of	Tentative ID	MW	MolForm	CAS#	Qual
1	5	2-Pentanone, 4-hydroxy-4-methyl-	116	C6H12O2	000123-42-2	50
2		Acetic acid, cyano-, 1,1-dimethyl...	141	C7H11NO2	001116-98-9	17
3		Morpholine, 4-methyl-	101	C5H11NO	000109-02-4	9
4		5-Hexen-2-one	98	C6H10O	000109-49-9	9
5		Guanidine	59	CH5N3	000113-00-8	9



Data Path : Z:\HPCHEM1\BNA F\DATA\BF103117\
 Data File : BF100028.D
 Acq On : 1 Nov 2017 5:37
 Operator : SJ/JU
 Sample : PB103271TB
 Misc :
 ALS Vial : 29 Sample Multiplier: 1

Instrument :
 BNA_F
 ClientSampleID :
 PB103271TB

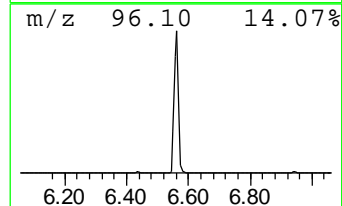
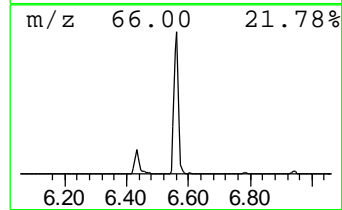
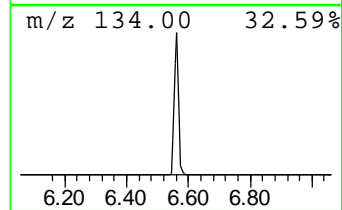
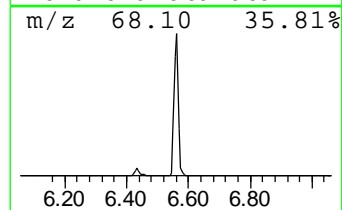
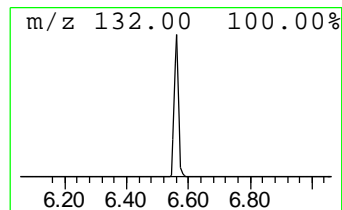
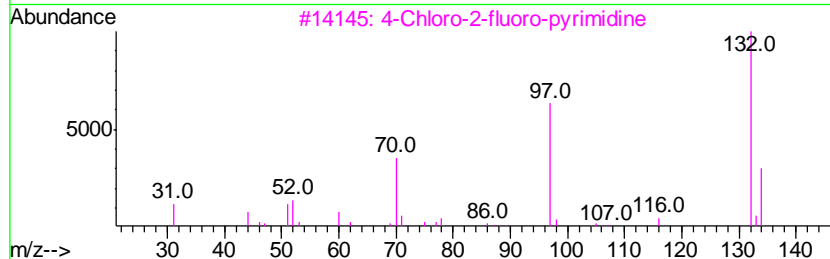
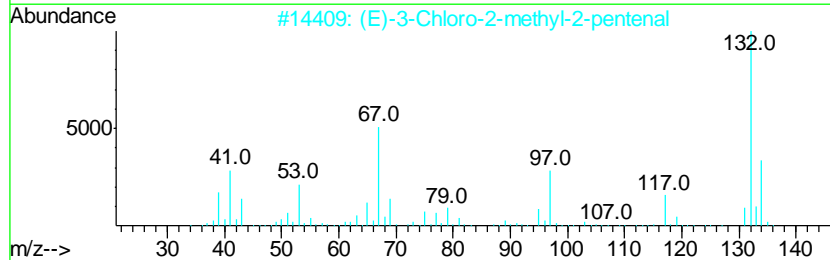
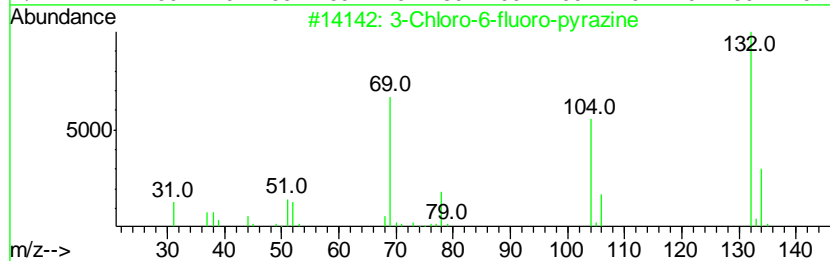
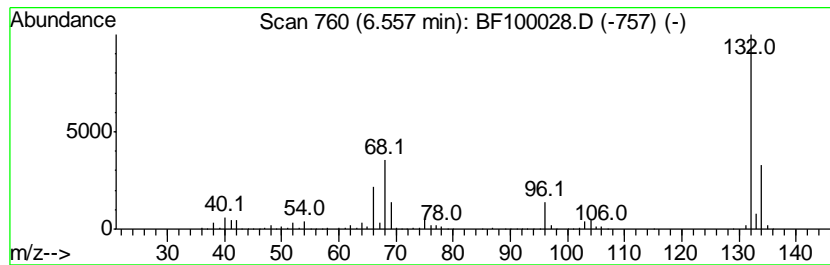
Quant Method : Z:\HPCHEM1\BNA F\METHODS\8270-BF102317.M
 Quant Title : ASP BNA STANDARDS FOR 5 POINT CALIBRATION

TIC Library : C:\DATABASE\NIST11.L
 TIC Integration Parameters: LSCINT.P

 Peak Number 2 unknown6.56 Concentration Rank 1

R.T.	EstConc	Area	Relative to ISTD	R.T.
6.56	81.64 ng	1976670	1,4-Dichlorobenzene-d4	6.79

Hit#	of	Tentative ID	MW	MolForm	CAS#	Qual
1	5	3-Chloro-6-fluoro-pyrazine	132	C4H2ClFN2	1000146-10-7	38
2		(E)-3-Chloro-2-methyl-2-pentenal	132	C6H9ClO	031357-76-3	17
3		4-Chloro-2-fluoro-pyrimidine	132	C4H2ClFN2	051422-00-5	9
4		4-Chloro-6-fluoro-pyrimidine	132	C4H2ClFN2	051422-01-6	9
5		1,3,5-Trifluorobenzene	132	C6H3F3	000372-38-3	9



Data Path : Z:\HPCHEM1\BNA_F\DATA\BF103117\
Data File : BF100028.D
Acq On : 1 Nov 2017 5:37
Operator : SJ/JU
Sample : PB103271TB
Misc :
ALS Vial : 29 Sample Multiplier: 1

Instrument :
BNA_F
ClientSampleId :
PB103271TB

Quant Method : Z:\HPCHEM1\BNA_F\METHODS\8270-BF102317.M
Quant Title : ASP BNA STANDARDS FOR 5 POINT CALIBRATION

TIC Library : C:\DATABASE\NIST11.L
TIC Integration Parameters: LSCINT.P

TIC Top Hit name	RT	EstConc	Units	Response	--Internal Standard--			
					#	RT	Resp	Conc
2-Pentanone, 4-hy...	5.02	11.3	ng	274576	1	6.79	484249	20.0
unknown6.56	6.56	81.6	ng	1976670	1	6.79	484249	20.0