

Data Path : Z:\HPCHEM1\BNA F\DATA\BF110116\
 Data File : BF090966.D
 Acq On : 1 Nov 2016 22:16
 Operator : UM/SJ
 Sample : H5463-03RE
 Misc :
 ALS Vial : 20 Sample Multiplier: 1

Instrument :
 BNA_F
 ClientSampleId :
 SB-2(0-2)RE

Integration Parameters: rteint.p
 Integrator: RTE
 Smoothing : ON
 Sampling : 1
 Start Thrs: 0.2
 Stop Thrs : 0

Filtering: 5
 Min Area: 3 % of largest Peak
 Max Peaks: 100
 Peak Location: TOP

If leading or trailing edge < 100 prefer < Baseline drop else tangent >
 Peak separation: 5

Method : Z:\HPCHEM1\BNA F\METHODS\8270-BF102616.M
 Title : ASP BNA STANDARDS FOR 5 POINT CALIBRATION

Signal : TIC

peak #	R.T. min	first scan	max scan	last scan	PK TY	peak height	corr. area	corr. % max.	% of total
1	4.899	244	246	254	rBV	748369	1161631	19.93%	1.351%
2	5.333	281	284	287	rBV	3802457	4481427	76.88%	5.213%
3	6.384	373	376	384	rBV	4121330	5036206	86.39%	5.859%
4	6.510	384	387	389	rBV	4334719	5296885	90.87%	6.162%
5	6.739	404	407	409	rBV	976105	1079202	18.51%	1.255%
6	6.887	418	420	423	rBV	2954216	3871209	66.41%	4.504%
7	7.299	453	456	459	rBV	2145330	3177217	54.50%	3.696%
8	7.344	459	460	463	rVV2	81048	125263	2.15%	0.146%
9	7.402	463	465	473	rVB2	25313	75971	1.30%	0.088%
10	8.019	517	519	525	rBV	1521103	1640221	28.14%	1.908%
11	9.105	611	614	616	rBV	5994506	5829292	100.00%	6.781%
12	9.185	619	621	624	rVB	85232	107216	1.84%	0.125%
13	9.368	634	637	639	rBV	43514	78766	1.35%	0.092%
14	9.436	641	643	646	rVV2	101263	147307	2.53%	0.171%
15	9.493	646	648	651	rVV	746100	1055858	18.11%	1.228%
16	9.550	651	653	658	rVB2	58196	101812	1.75%	0.118%
17	9.630	658	660	663	rBV	403560	448636	7.70%	0.522%
18	9.722	666	668	670	rVB	170231	184269	3.16%	0.214%
19	9.779	670	673	674	rBV	1496724	1744933	29.93%	2.030%
20	9.802	674	675	678	rVB	70808	79824	1.37%	0.093%
21	9.950	684	688	689	rBV3	41020	96242	1.65%	0.112%
22	9.973	689	690	692	rVV	128661	176971	3.04%	0.206%
23	10.019	692	694	698	rVB2	75800	144959	2.49%	0.169%
24	10.088	698	700	702	rBV3	75555	122378	2.10%	0.142%
25	10.179	706	708	709	rBV	84941	106056	1.82%	0.123%
26	10.213	709	711	713	rVB2	327928	339014	5.82%	0.394%
27	10.316	719	720	724	rVB	186750	243168	4.17%	0.283%
28	10.430	727	730	733	rVV	155902	244520	4.19%	0.284%
29	10.476	733	734	737	rVV3	94564	128411	2.20%	0.149%
30	10.568	739	742	744	rBV	2764593	3119106	53.51%	3.629%
31	10.693	751	753	756	rBV	418597	693967	11.90%	0.807%
32	10.876	766	769	774	rBV3	103311	298241	5.12%	0.347%
33	10.945	774	775	777	rBV2	68855	74928	1.29%	0.087%
34	11.013	777	781	784	rBV3	89077	237652	4.08%	0.276%

Data Path : Z:\HPCHEM1\BNA F\DATA\BF110116\
 Data File : BF090966.D
 Acq On : 1 Nov 2016 22:16
 Operator : UM/SJ
 Sample : H5463-03RE
 Misc :
 ALS Vial : 20 Sample Multiplier: 1

Instrument :
 BNA_F
 ClientSampleId :
 SB-2(0-2)RE

Integration Parameters: rteint.p
 Integrator: RTE
 Smoothing : ON
 Sampling : 1
 Start Thrs: 0.2
 Stop Thrs : 0

Filtering: 5
 Min Area: 3 % of largest Peak
 Max Peaks: 100
 Peak Location: TOP

If leading or trailing edge < 100 prefer < Baseline drop else tangent >
 Peak separation: 5

Method : Z:\HPCHEM1\BNA F\METHODS\8270-BF102616.M
 Title : ASP BNA STANDARDS FOR 5 POINT CALIBRATION

35	11.105	788	789	790	rBV	105923	118546	2.03%	0.138%
36	11.139	790	792	793	rBV	238981	221179	3.79%	0.257%
37	11.253	800	802	803	rBV	1453428	1450244	24.88%	1.687%
38	11.333	806	809	811	rVV	565433	590182	10.12%	0.687%
39	11.368	811	812	814	rVB	115493	113520	1.95%	0.132%
40	11.516	821	825	827	rBV2	101421	224610	3.85%	0.261%
41	11.562	827	829	830	rVB2	256475	218201	3.74%	0.254%
42	11.756	844	846	847	rBV	331468	321270	5.51%	0.374%
43	11.791	847	849	851	rVB	361225	430465	7.38%	0.501%
44	11.836	851	853	854	rBV	235436	264514	4.54%	0.308%
45	11.871	854	856	861	rVB2	758759	1114628	19.12%	1.297%
46	11.974	861	865	869	rBV2	186430	327549	5.62%	0.381%
47	12.054	869	872	873	rBV	232639	245191	4.21%	0.285%
48	12.202	883	885	886	rBV	77267	79404	1.36%	0.092%
49	12.236	886	888	891	rVB2	113806	203131	3.48%	0.236%
50	12.305	892	894	896	rBV	364682	437909	7.51%	0.509%
51	12.351	896	898	900	rVB2	220453	423219	7.26%	0.492%
52	12.396	900	902	906	rVB2	205362	317203	5.44%	0.369%
53	12.465	906	908	911	rBV	2590515	3388572	58.13%	3.942%
54	12.534	911	914	915	rBV2	60023	92146	1.58%	0.107%
55	12.556	915	916	918	rVB	307432	324923	5.57%	0.378%
56	12.614	918	921	922	rBV2	129070	211350	3.63%	0.246%
57	12.694	925	928	930	rBV2	2741723	3192210	54.76%	3.714%
58	12.842	939	941	944	rVB	3591349	4778560	81.97%	5.559%
59	12.911	944	947	951	rVB3	273833	487441	8.36%	0.567%
60	13.025	953	957	959	rVB	680902	998204	17.12%	1.161%
61	13.094	959	963	964	rBV2	490000	630255	10.81%	0.733%
62	13.128	964	966	970	rVB	512741	620416	10.64%	0.722%
63	13.185	970	971	972	rBV	82043	80907	1.39%	0.094%
64	13.219	972	974	975	rVB	266998	226635	3.89%	0.264%
65	13.254	975	977	979	rBV2	172807	236630	4.06%	0.275%
66	13.334	981	984	989	rBV2	399279	784713	13.46%	0.913%
67	13.425	989	992	995	rVB4	215315	430788	7.39%	0.501%
68	13.528	997	1001	1005	rBV2	181617	458764	7.87%	0.534%
69	13.642	1008	1011	1012	rBV2	205967	311563	5.34%	0.362%
70	13.745	1018	1020	1023	rVB	358756	455022	7.81%	0.529%
71	13.882	1029	1032	1034	rBV2	2142969	3506439	60.15%	4.079%

Data Path : Z:\HPCHEM1\BNA F\DATA\BF110116\
 Data File : BF090966.D
 Acq On : 1 Nov 2016 22:16
 Operator : UM/SJ
 Sample : H5463-03RE
 Misc :
 ALS Vial : 20 Sample Multiplier: 1

Instrument :
 BNA_F
 ClientSampleId :
 SB-2(0-2)RE

Integration Parameters: rteint.p
 Integrator: RTE
 Smoothing : ON
 Sampling : 1
 Start Thrs: 0.2
 Stop Thrs : 0

Filtering: 5
 Min Area: 3 % of largest Peak
 Max Peaks: 100
 Peak Location: TOP

If leading or trailing edge < 100 prefer < Baseline drop else tangent >
 Peak separation: 5

Method : Z:\HPCHEM1\BNA F\METHODS\8270-BF102616.M
 Title : ASP BNA STANDARDS FOR 5 POINT CALIBRATION

72	14.031	1043	1045	1047	rBV2	140676	195439	3.35%	0.227%
73	14.248	1059	1064	1065	rBV5	105366	284733	4.88%	0.331%
74	14.282	1065	1067	1068	rVV	467336	561307	9.63%	0.653%
75	14.317	1068	1070	1072	rVV2	208516	312382	5.36%	0.363%
76	14.374	1073	1075	1076	rVV2	304179	376426	6.46%	0.438%
77	14.397	1076	1077	1082	rVV5	218631	586930	10.07%	0.683%
78	14.477	1082	1084	1087	rVB2	114983	159051	2.73%	0.185%
79	14.602	1091	1095	1098	rVV5	100917	325968	5.59%	0.379%
80	14.659	1098	1100	1104	rVB4	120515	302271	5.19%	0.352%
81	14.751	1105	1108	1112	rVV2	173512	344213	5.90%	0.400%
82	14.900	1119	1121	1126	rBV	1474314	3332380	57.17%	3.877%
83	15.002	1126	1130	1132	rVB2	418568	516653	8.86%	0.601%
84	15.094	1135	1138	1140	rBV3	94040	226524	3.89%	0.264%
85	15.174	1143	1145	1148	rVB	783852	1107078	18.99%	1.288%
86	15.242	1148	1151	1153	rBV	1392967	1850079	31.74%	2.152%
87	15.288	1153	1155	1157	rBV	663729	1032434	17.71%	1.201%
88	15.460	1167	1170	1171	rBV	70071	145697	2.50%	0.169%
89	15.688	1188	1190	1192	rBV	54791	104148	1.79%	0.121%
90	15.734	1192	1194	1195	rVV2	67188	106618	1.83%	0.124%
91	15.802	1198	1200	1202	rVB	99864	123674	2.12%	0.144%
92	16.454	1254	1257	1258	rBV2	87065	172443	2.96%	0.201%
93	16.625	1268	1272	1276	rVB	627823	1142697	19.60%	1.329%
94	16.694	1276	1278	1282	rVB2	72028	145628	2.50%	0.169%
95	16.785	1282	1286	1288	rBV2	137344	289340	4.96%	0.337%
96	16.831	1288	1290	1293	rBV	89339	179236	3.07%	0.209%
97	17.025	1303	1307	1315	rVB	416408	875265	15.01%	1.018%
98	17.231	1322	1325	1333	rVB2	120580	294874	5.06%	0.343%
99	19.048	1479	1484	1491	rVB2	94715	343354	5.89%	0.399%
100	19.186	1491	1496	1502	rBV3	94657	457732	7.85%	0.532%

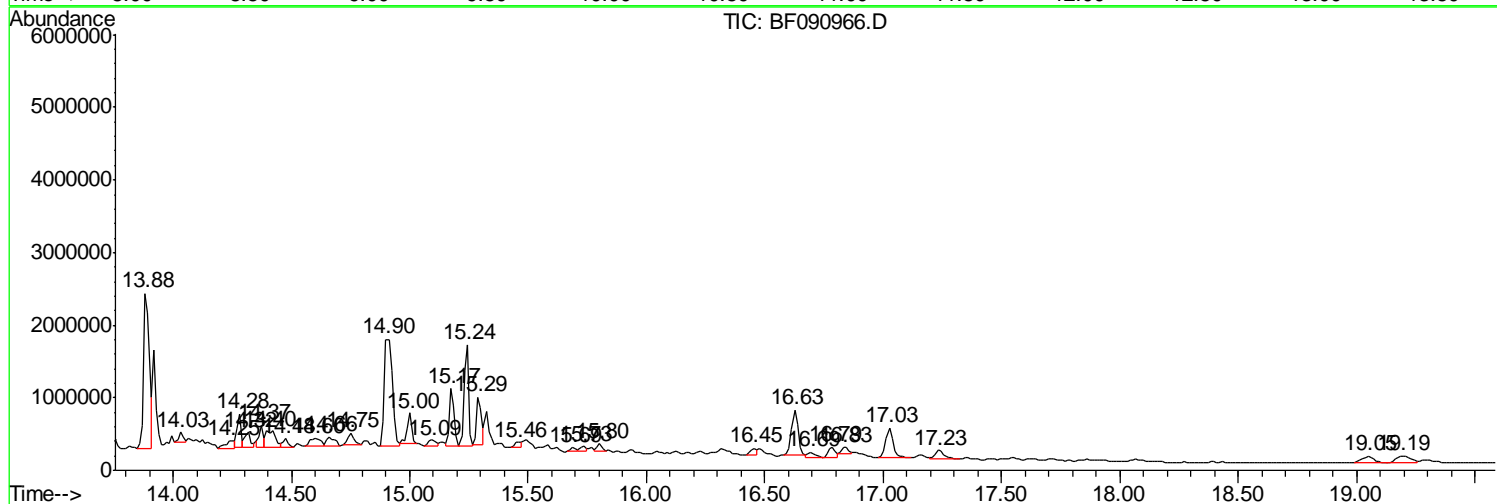
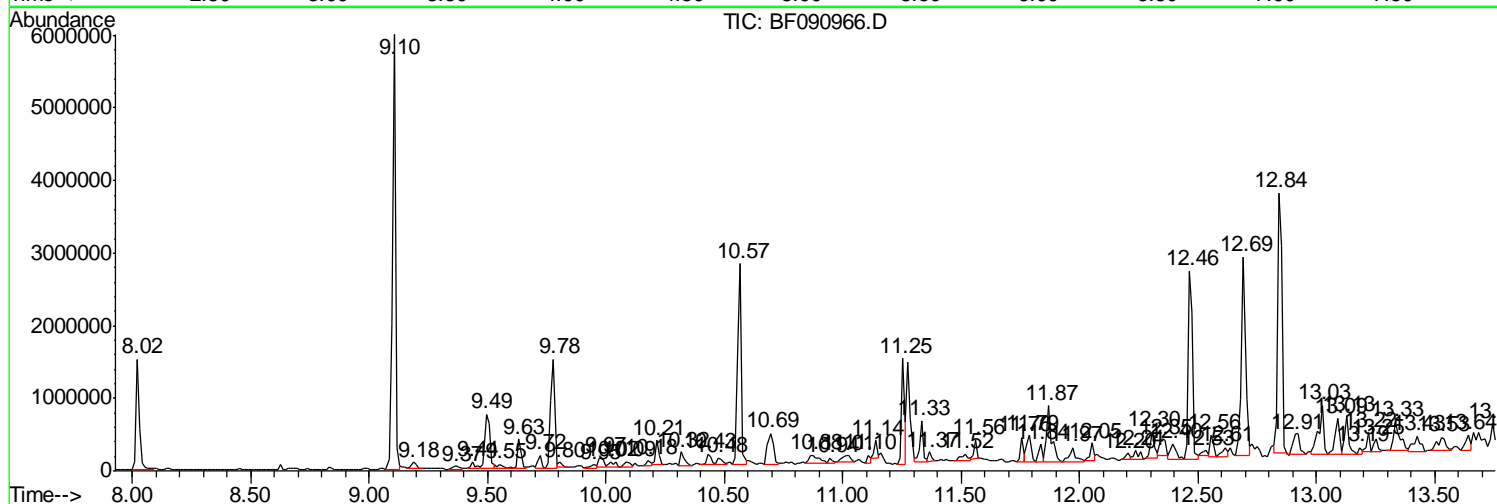
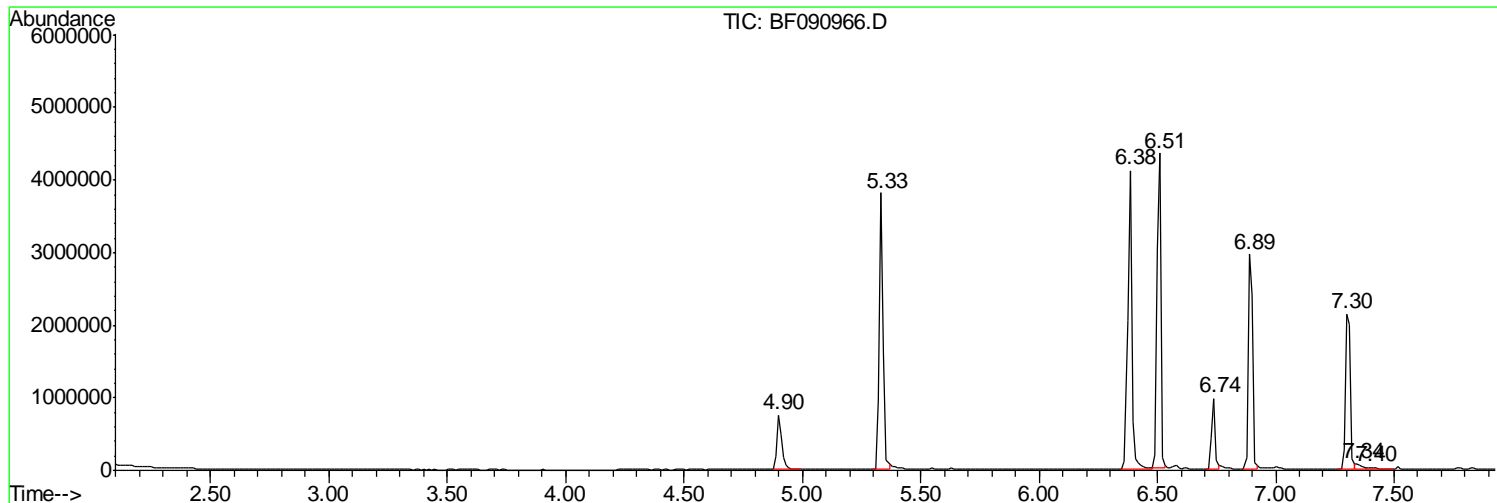
Sum of corrected areas: 85959835

Data Path : Z:\HPCHEM1\BNA F\DATA\BF110116\
 Data File : BF090966.D
 Acq On : 1 Nov 2016 22:16
 Operator : UM/SJ
 Sample : H5463-03RE
 Misc :
 ALS Vial : 20 Sample Multiplier: 1

Instrument :
 BNA_F
 Client Sampled :
 SB-2(0-2)RE

Quant Method : Z:\HPCHEM1\BNA F\METHODS\8270-BF102616.M
 Quant Title : ASP BNA STANDARDS FOR 5 POINT CALIBRATION

TIC Library : C:\DATABASE\NIST02.L
 TIC Integration Parameters: LSCINT.P



Data Path : Z:\HPCHEM1\BNA F\DATA\BF110116\
 Data File : BF090966.D
 Acq On : 1 Nov 2016 22:16
 Operator : UM/SJ
 Sample : H5463-03RE
 Misc :
 ALS Vial : 20 Sample Multiplier: 1

Instrument :
 BNA_F
 ClientSampled :
 SB-2(0-2)RE

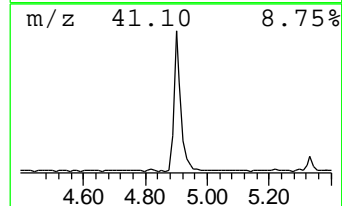
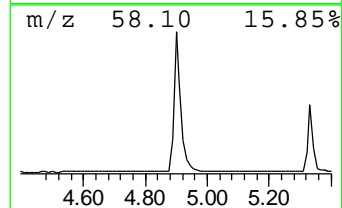
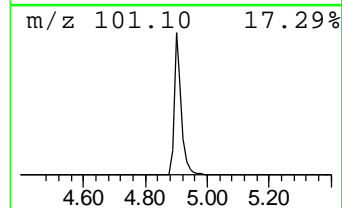
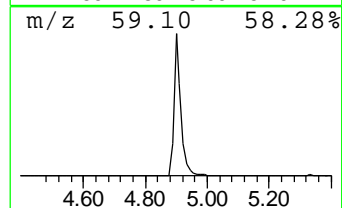
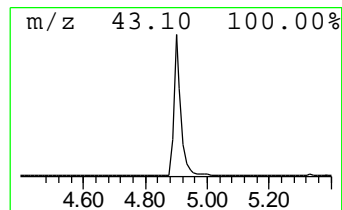
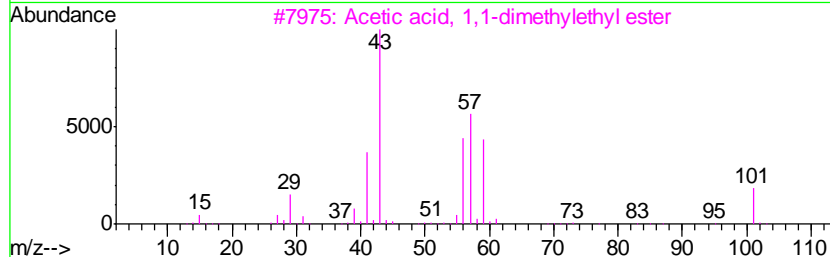
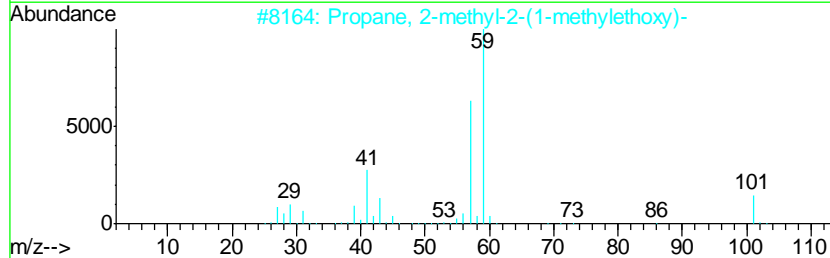
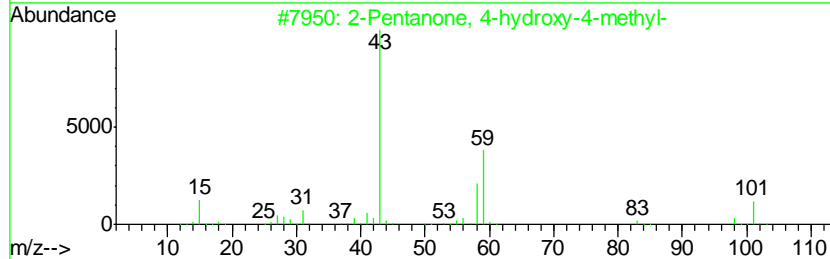
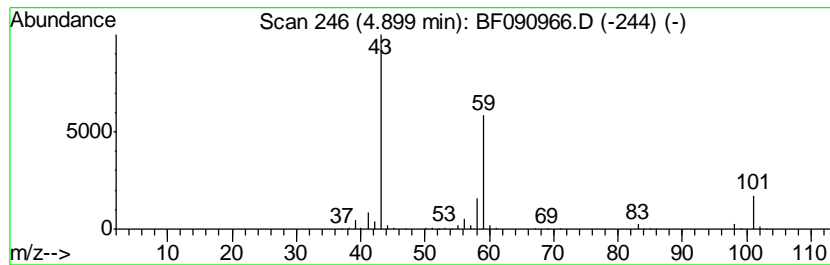
Quant Method : Z:\HPCHEM1\BNA F\METHODS\8270-BF102616.M
 Quant Title : ASP BNA STANDARDS FOR 5 POINT CALIBRATION

TIC Library : C:\DATABASE\NIST02.L
 TIC Integration Parameters: LSCINT.P

 Peak Number 1 2-Pentanone, 4-hydroxy-4-me... Concentration Rank 3

R.T.	EstConc	Area	Relative to ISTD	R.T.
4.90	21.53 ng	1161630	1,4-Dichlorobenzene-d4	6.74

Hit#	of	Tentative ID	MW	MolForm	CAS#	Qual
1	5	2-Pentanone, 4-hydroxy-4-methyl-	116	C6H12O2	000123-42-2	59
2		Propane, 2-methyl-2-(1-methyleth...	116	C7H16O	017348-59-3	42
3		Acetic acid, 1,1-dimethylethyl e...	116	C6H12O2	000540-88-5	39
4		3-Hexanol, 4-methyl-	116	C7H16O	000615-29-2	33
5		2-Hexanol, 2-methyl-	116	C7H16O	000625-23-0	33



Data Path : Z:\HPCHEM1\BNA F\DATA\BF110116\
 Data File : BF090966.D
 Acq On : 1 Nov 2016 22:16
 Operator : UM/SJ
 Sample : H5463-03RE
 Misc :
 ALS Vial : 20 Sample Multiplier: 1

Instrument :
 BNA_F
 ClientSampleID :
 SB-2(0-2)RE

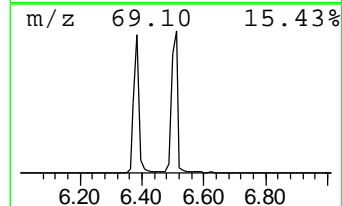
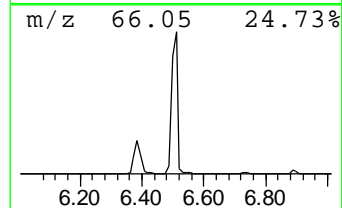
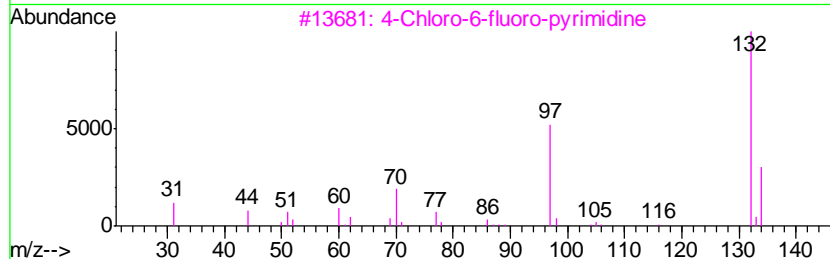
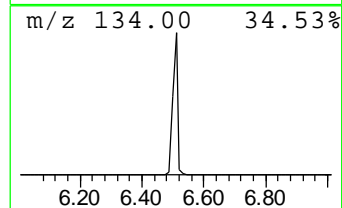
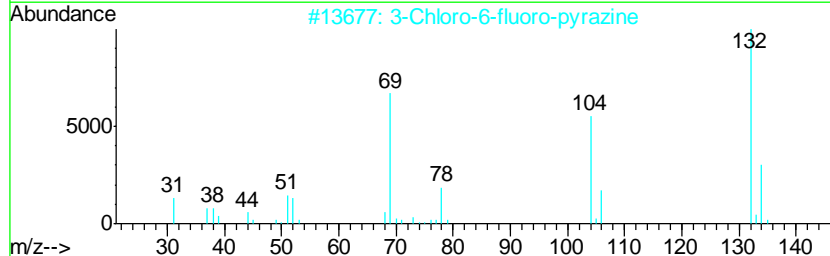
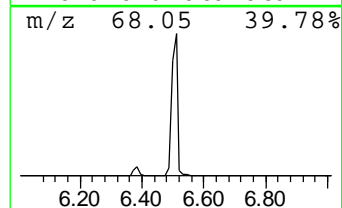
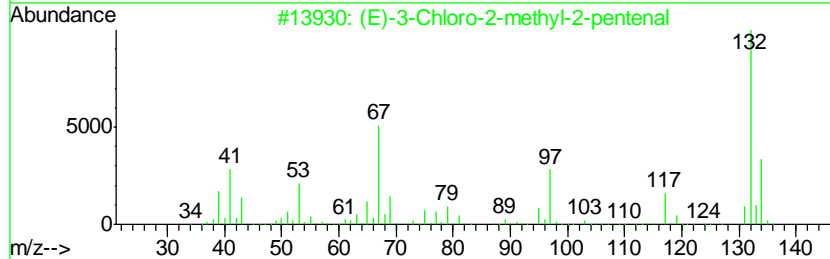
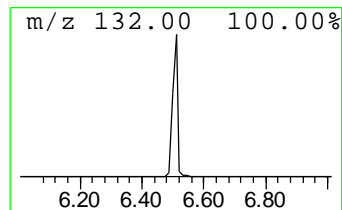
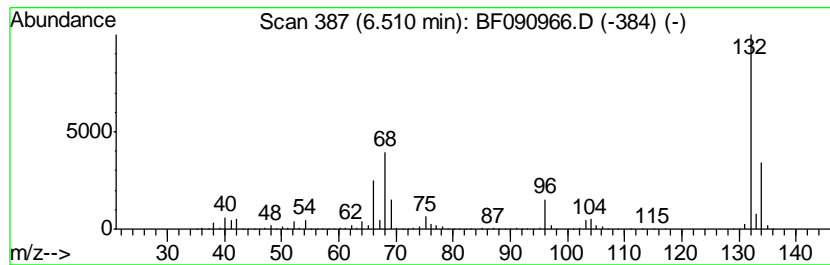
Quant Method : Z:\HPCHEM1\BNA F\METHODS\8270-BF102616.M
 Quant Title : ASP BNA STANDARDS FOR 5 POINT CALIBRATION

TIC Library : C:\DATABASE\NIST02.L
 TIC Integration Parameters: LSCINT.P

 Peak Number 2 unknown6.51 Concentration Rank 1

R.T.	EstConc	Area	Relative to ISTD	R.T.
6.51	98.16 ng	5296890	1,4-Dichlorobenzene-d4	6.74

Hit#	of	Tentative ID	MW	MolForm	CAS#	Qual
1	5	(E)-3-Chloro-2-methyl-2-pentenal	132	C6H9ClO	031357-76-3	17
2		3-Chloro-6-fluoro-pyrazine	132	C4H2ClFN2	1000146-10-7	16
3		4-Chloro-6-fluoro-pyrimidine	132	C4H2ClFN2	051422-01-6	9
4		2H-Cyclopenta[d]pyridazine, 2-me...	132	C8H8N2	022291-85-6	9
5		Imidazole, 4,5-dicyano-1-methyl-	132	C6H4N4	019485-35-9	9



Data Path : Z:\HPCHEM1\BNA F\DATA\BF110116\
 Data File : BF090966.D
 Acq On : 1 Nov 2016 22:16
 Operator : UM/SJ
 Sample : H5463-03RE
 Misc :
 ALS Vial : 20 Sample Multiplier: 1

Instrument :
 BNA_F
 ClientSampleID :
 SB-2(0-2)RE

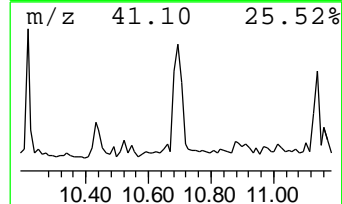
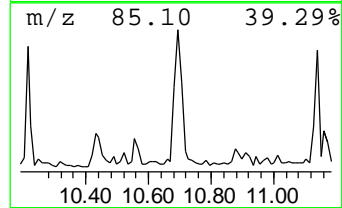
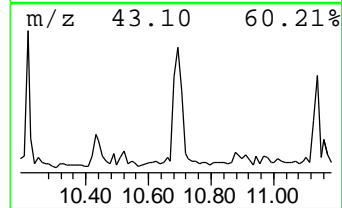
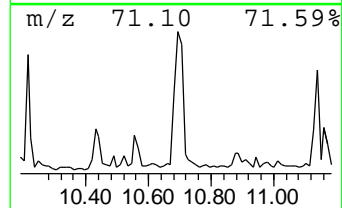
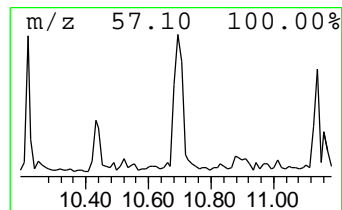
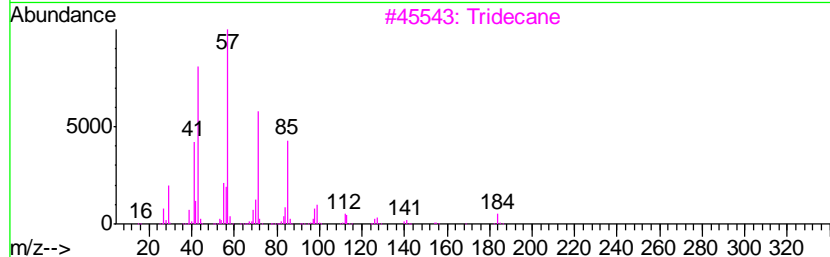
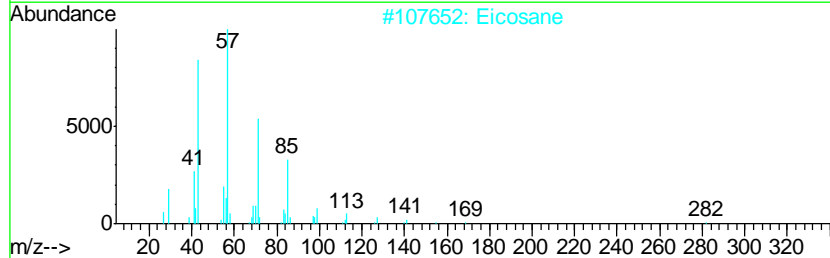
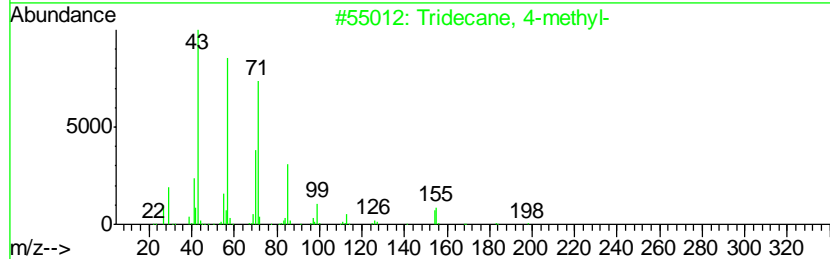
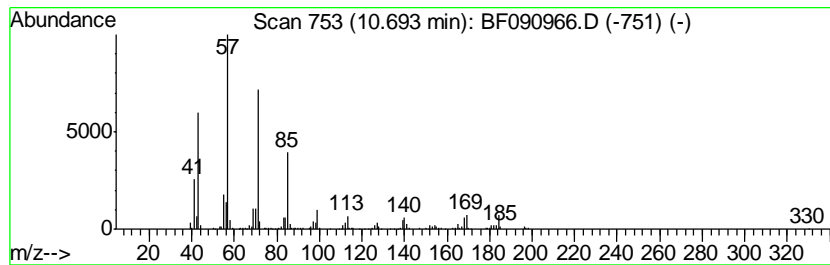
Quant Method : Z:\HPCHEM1\BNA F\METHODS\8270-BF102616.M
 Quant Title : ASP BNA STANDARDS FOR 5 POINT CALIBRATION

TIC Library : C:\DATABASE\NIST02.L
 TIC Integration Parameters: LSCINT.P

 Peak Number 4 Tridecane, 4-methyl- Concentration Rank 7

R.T.	EstConc	Area	Relative to ISTD	R.T.
10.69	9.57 ng	693967	Phenanthrene-d10	11.25

Hit#	of	Tentative ID	MW	MolForm	CAS#	Qual
1	5	Tridecane, 4-methyl-	198	C14H30	026730-12-1	74
2		Eicosane	282	C20H42	000112-95-8	74
3		Tridecane	184	C13H28	000629-50-5	74
4		Heptacosane	380	C27H56	000593-49-7	72
5		Pentadecane	212	C15H32	000629-62-9	72



Data Path : Z:\HPCHEM1\BNA F\DATA\BF110116\
 Data File : BF090966.D
 Acq On : 1 Nov 2016 22:16
 Operator : UM/SJ
 Sample : H5463-03RE
 Misc :
 ALS Vial : 20 Sample Multiplier: 1

Instrument :
 BNA_F
 ClientSampleID :
 SB-2(0-2)RE

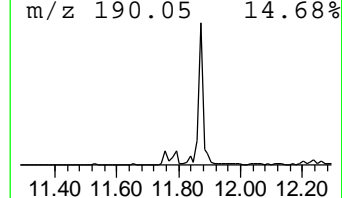
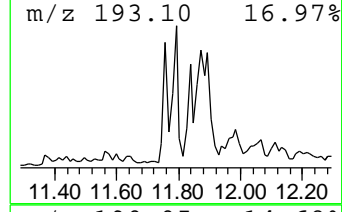
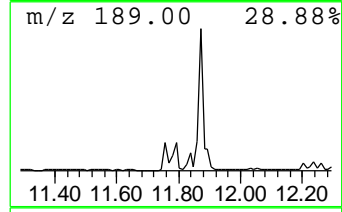
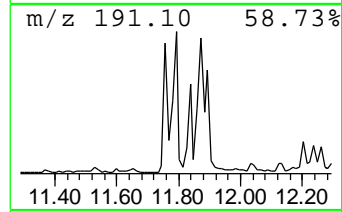
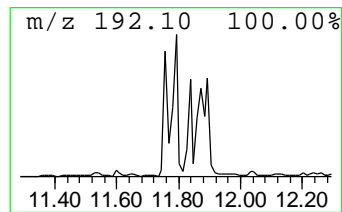
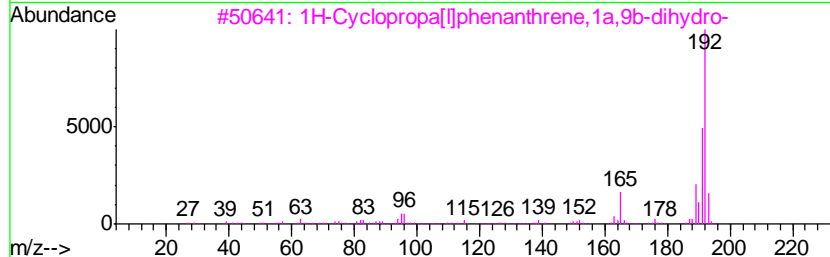
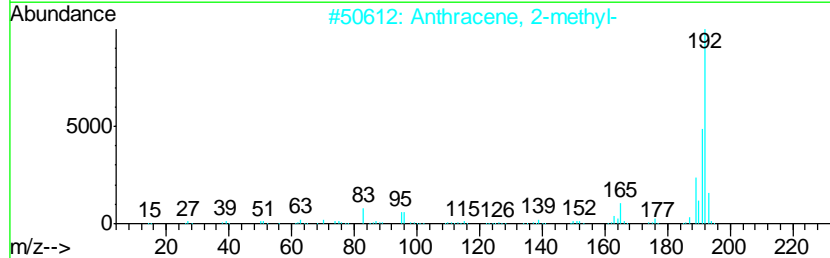
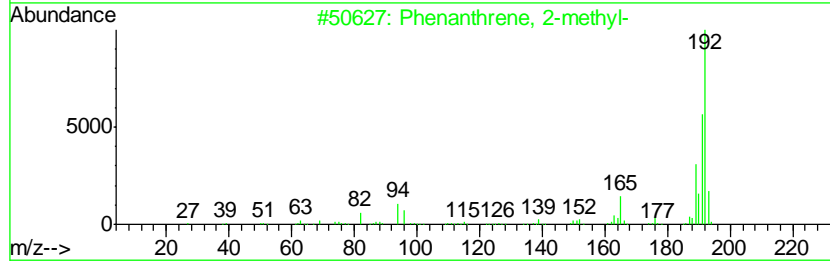
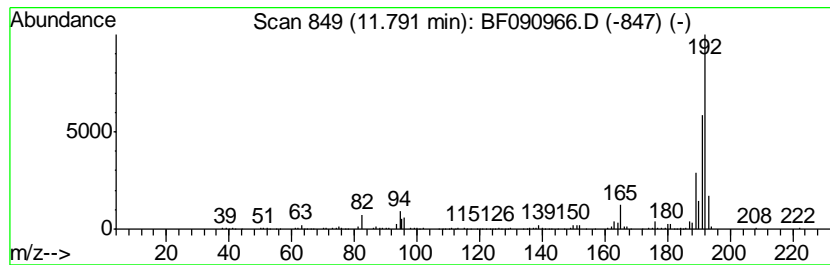
Quant Method : Z:\HPCHEM1\BNA F\METHODS\8270-BF102616.M
 Quant Title : ASP BNA STANDARDS FOR 5 POINT CALIBRATION

TIC Library : C:\DATABASE\NIST02.L
 TIC Integration Parameters: LSCINT.P

 Peak Number 5 Phenanthrene, 2-methyl- Concentration Rank 13

R.T.	EstConc	Area	Relative to ISTD	R.T.
11.79	5.94 ng	430465	Phenanthrene-d10	11.25

Hit#	of	Tentative ID	MW	MolForm	CAS#	Qual
1	5	Phenanthrene, 2-methyl-	192	C15H12	002531-84-2	98
2		Anthracene, 2-methyl-	192	C15H12	000613-12-7	97
3		1H-Cyclopropa[1]phenanthrene,1a,...	192	C15H12	000949-41-7	96
4		Anthracene, 9-methyl-	192	C15H12	000779-02-2	95
5		Phenanthrene, 1-methyl-	192	C15H12	000832-69-9	95



Data Path : Z:\HPCHEM1\BNA F\DATA\BF110116\
 Data File : BF090966.D
 Acq On : 1 Nov 2016 22:16
 Operator : UM/SJ
 Sample : H5463-03RE
 Misc :
 ALS Vial : 20 Sample Multiplier: 1

Instrument :
 BNA_F
 ClientSampleID :
 SB-2(0-2)RE

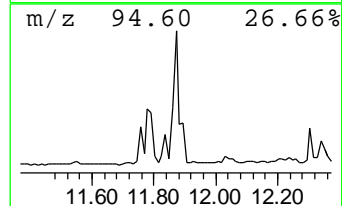
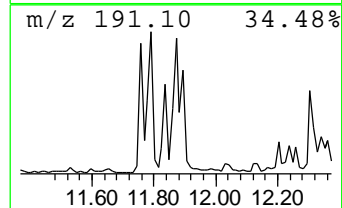
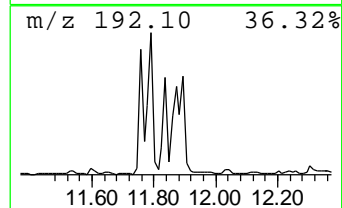
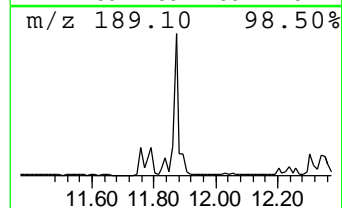
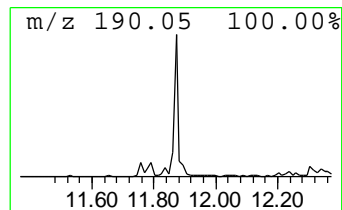
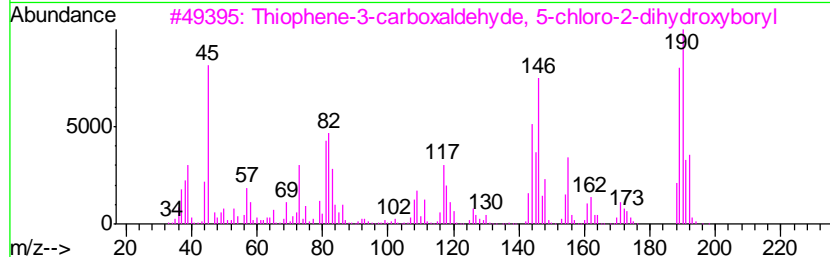
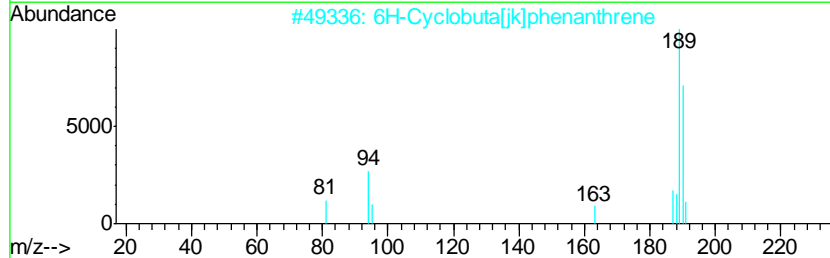
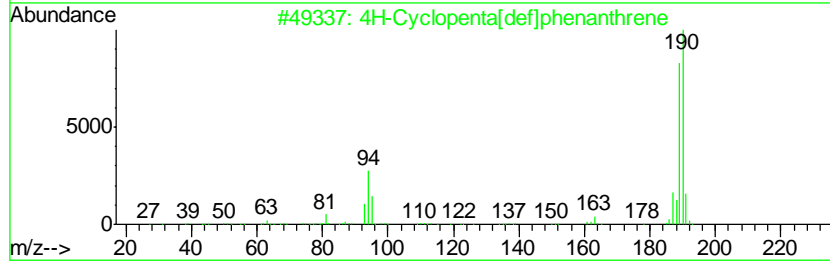
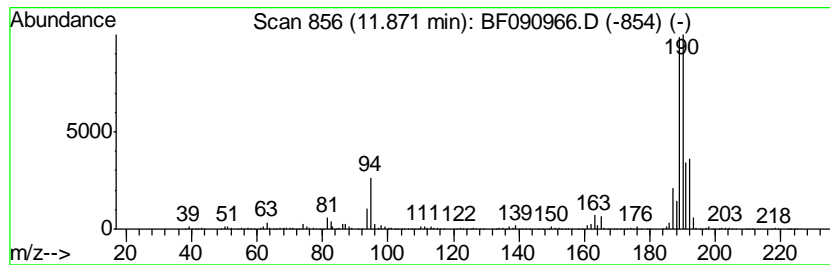
Quant Method : Z:\HPCHEM1\BNA F\METHODS\8270-BF102616.M
 Quant Title : ASP BNA STANDARDS FOR 5 POINT CALIBRATION

TIC Library : C:\DATABASE\NIST02.L
 TIC Integration Parameters: LSCINT.P

 Peak Number 6 4H-Cyclopenta[def]phenanthrene Concentration Rank 5

R.T.	EstConc	Area	Relative to ISTD	R.T.
11.87	15.37 ng	1114630	Phenanthrene-d10	11.25

Hit#	of	Tentative ID	MW	MolForm	CAS#	Qual
1	5	4H-Cyclopenta[def]phenanthrene	190	C15H10	000203-64-5	94
2		6H-Cyclobuta[jk]phenanthrene	190	C15H10	083469-43-6	72
3		Thiophene-3-carboxaldehyde, 5-ch...	190	C5H4BClO3S	036155-87-0	52
4		2,2'-Bis(4,5-dimethylimidazole)	190	C10H14N4	069286-06-2	45
5		4,4'-Difluorobiphenyl	190	C12H8F2	000398-23-2	23



Data Path : Z:\HPCHEM1\BNA F\DATA\BF110116\
 Data File : BF090966.D
 Acq On : 1 Nov 2016 22:16
 Operator : UM/SJ
 Sample : H5463-03RE
 Misc :
 ALS Vial : 20 Sample Multiplier: 1

Instrument :
 BNA_F
 ClientSampleID :
 SB-2(0-2)RE

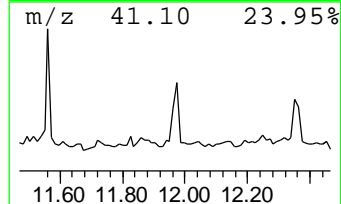
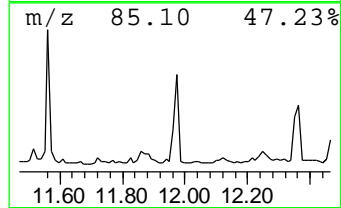
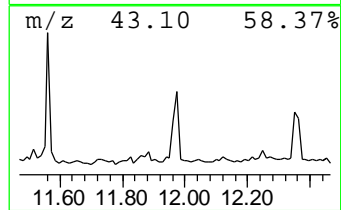
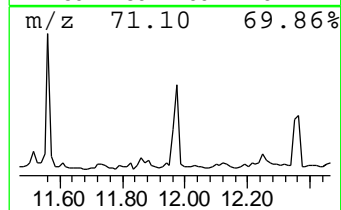
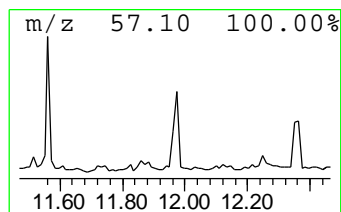
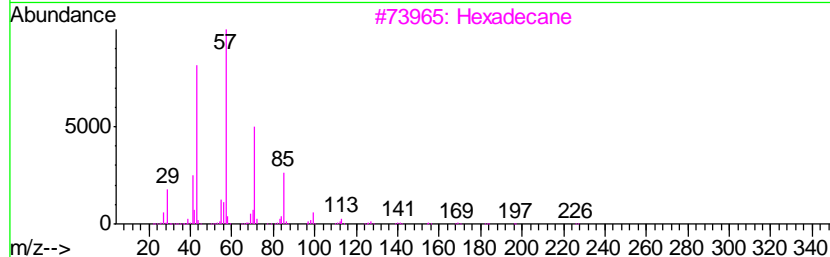
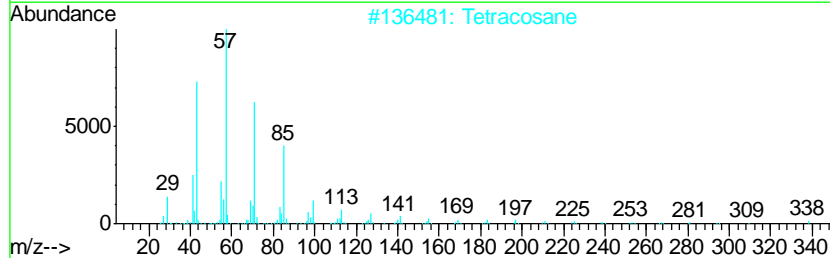
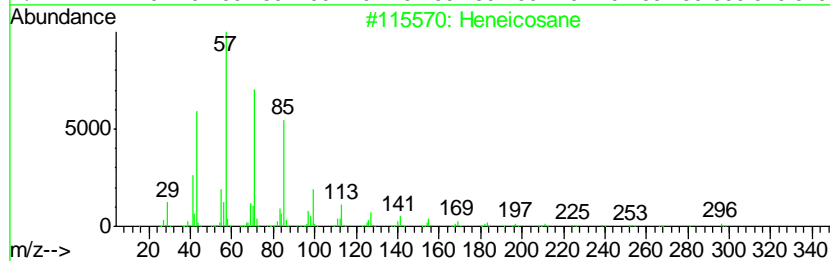
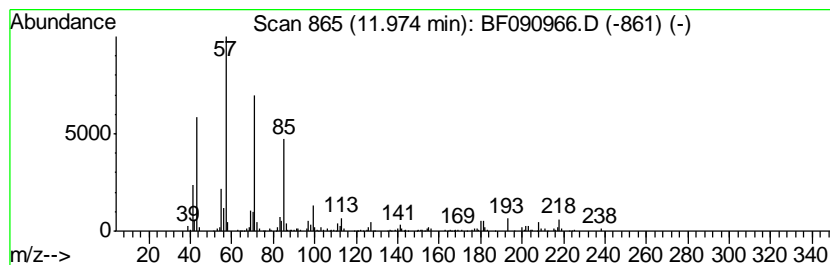
Quant Method : Z:\HPCHEM1\BNA F\METHODS\8270-BF102616.M
 Quant Title : ASP BNA STANDARDS FOR 5 POINT CALIBRATION

TIC Library : C:\DATABASE\NIST02.L
 TIC Integration Parameters: LSCINT.P

 Peak Number 7 Heneicosane Concentration Rank 19

R.T.	EstConc	Area	Relative to ISTD	R.T.
11.97	4.52 ng	327549	Phenanthrene-d10	11.25

Hit#	of	Tentative ID	MW	MolForm	CAS#	Qual
1	5	Heneicosane	296	C21H44	000629-94-7	74
2		Tetracosane	338	C24H50	000646-31-1	74
3		Hexadecane	226	C16H34	000544-76-3	72
4		Eicosane	282	C20H42	000112-95-8	58
5		Tridecane, 1-iodo-	310	C13H27I	035599-77-0	52



Data Path : Z:\HPCHEM1\BNA F\DATA\BF110116\
 Data File : BF090966.D
 Acq On : 1 Nov 2016 22:16
 Operator : UM/SJ
 Sample : H5463-03RE
 Misc :
 ALS Vial : 20 Sample Multiplier: 1

Instrument :
 BNA_F
 ClientSampled :
 SB-2(0-2)RE

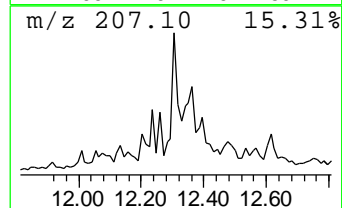
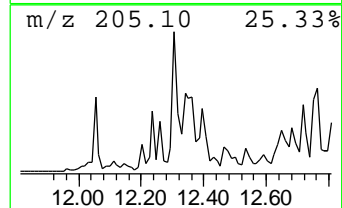
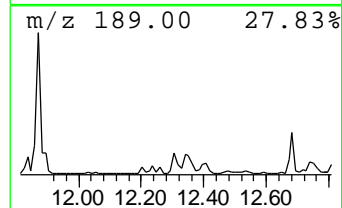
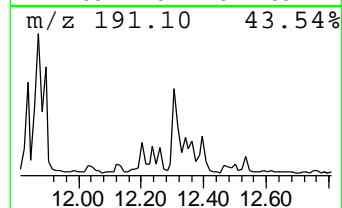
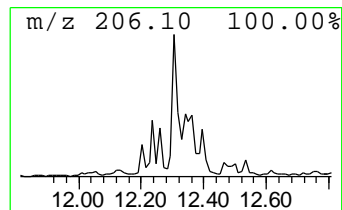
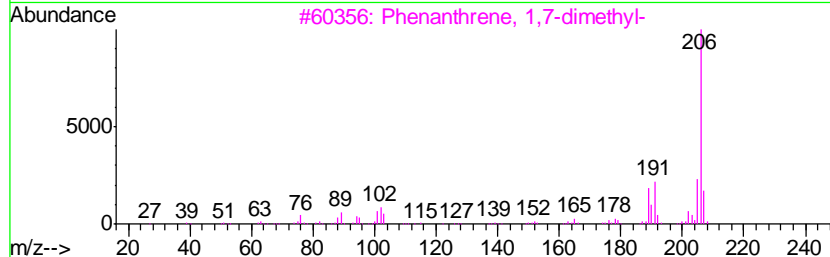
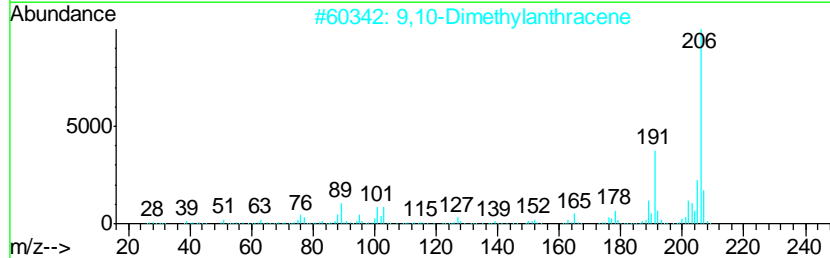
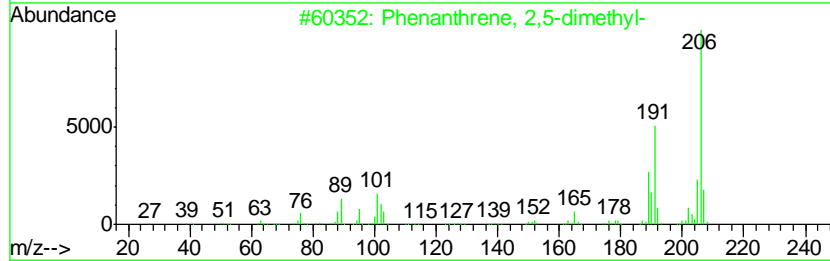
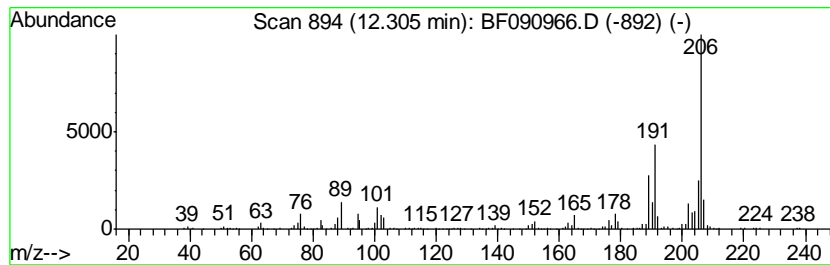
Quant Method : Z:\HPCHEM1\BNA F\METHODS\8270-BF102616.M
 Quant Title : ASP BNA STANDARDS FOR 5 POINT CALIBRATION

TIC Library : C:\DATABASE\NIST02.L
 TIC Integration Parameters: LSCINT.P

 Peak Number 8 Phenanthrene, 2,5-dimethyl- Concentration Rank 12

R.T.	EstConc	Area	Relative to ISTD	R.T.
12.31	6.04 ng	437909	Phenanthrene-d10	11.25

Hit#	of	Tentative ID	MW	MolForm	CAS#	Qual
1	5	Phenanthrene, 2,5-dimethyl-	206	C16H14	003674-66-6	95
2		9,10-Dimethylanthracene	206	C16H14	000781-43-1	93
3		Phenanthrene, 1,7-dimethyl-	206	C16H14	000483-87-4	93
4		Phenanthrene, 3,6-dimethyl-	206	C16H14	001576-67-6	93
5		Phenanthrene, 2,7-dimethyl-	206	C16H14	001576-69-8	93



Data Path : Z:\HPCHEM1\BNA F\DATA\BF110116\
 Data File : BF090966.D
 Acq On : 1 Nov 2016 22:16
 Operator : UM/SJ
 Sample : H5463-03RE
 Misc :
 ALS Vial : 20 Sample Multiplier: 1

Instrument :
 BNA_F
 ClientSampled :
 SB-2(0-2)RE

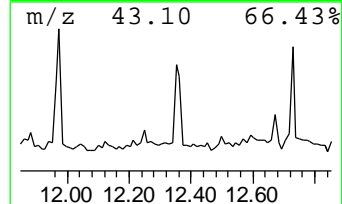
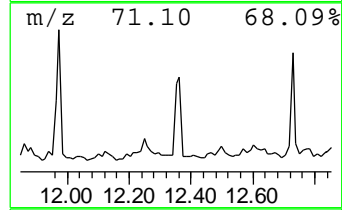
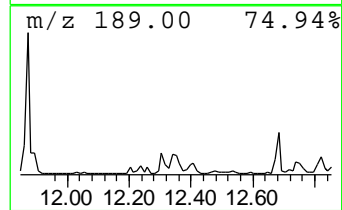
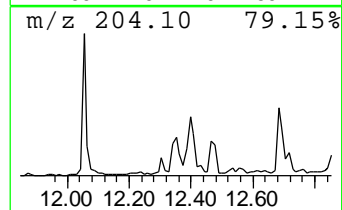
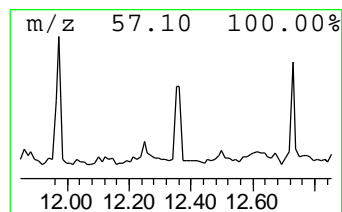
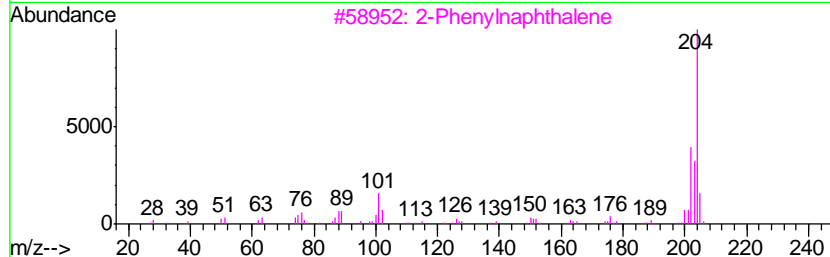
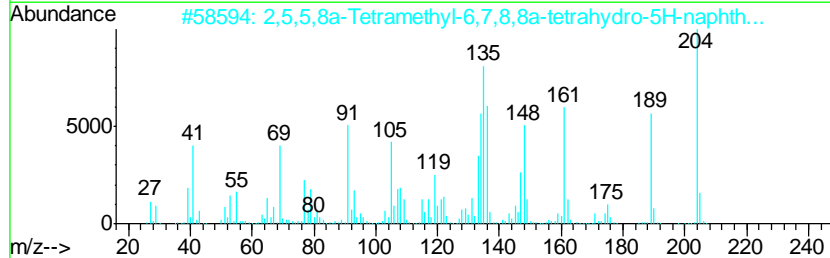
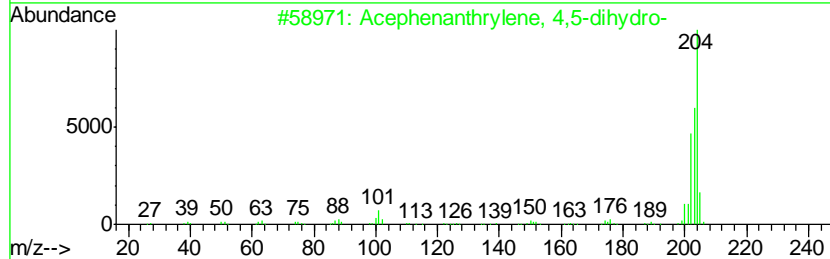
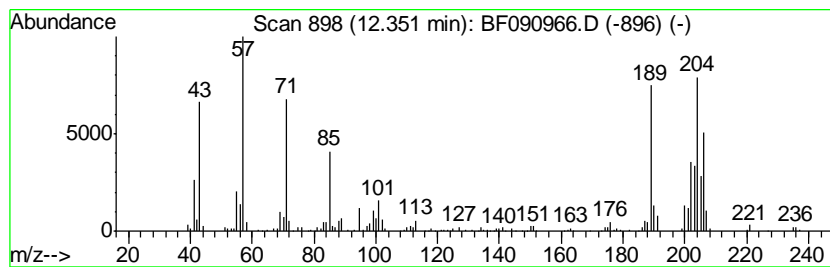
Quant Method : Z:\HPCHEM1\BNA F\METHODS\8270-BF102616.M
 Quant Title : ASP BNA STANDARDS FOR 5 POINT CALIBRATION

TIC Library : C:\DATABASE\NIST02.L
 TIC Integration Parameters: LSCINT.P

 Peak Number 9 Acephenanthrylene, 4,5-dihy... Concentration Rank 15

R.T.	EstConc	Area	Relative to ISTD	R.T.
12.35	5.84 ng	423219	Phenanthrene-d10	11.25

Hit#	of	Tentative ID	MW	MolForm	CAS#	Qual
1	5	Acephenanthrylene, 4,5-dihydro-	204	C16H12	006232-48-0	60
2		2,5,5,8a-Tetramethyl-6,7,8,8a-te...	204	C14H20O	124957-09-1	38
3		2-Phenyl-naphthalene	204	C16H12	035465-71-5	38
4		9,10-Bis(bromomethyl)anthracene	362	C16H12Br2	034373-96-1	30
5		5-Methyl-2-(p-tolylimino)-1,3-th...	206	C11H14N2S	070446-87-6	25



Data Path : Z:\HPCHEM1\BNA F\DATA\BF110116\
 Data File : BF090966.D
 Acq On : 1 Nov 2016 22:16
 Operator : UM/SJ
 Sample : H5463-03RE
 Misc :
 ALS Vial : 20 Sample Multiplier: 1

Instrument :
 BNA_F
 ClientSampled :
 SB-2(0-2)RE

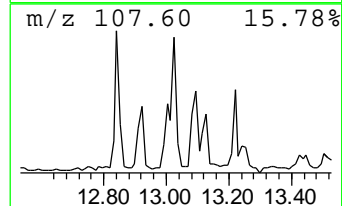
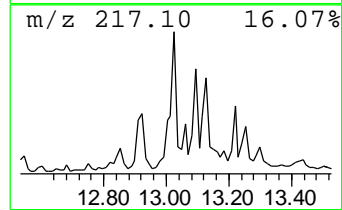
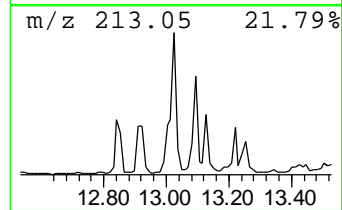
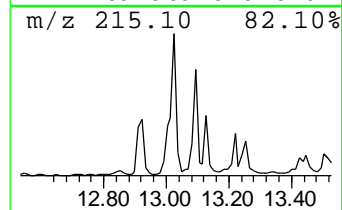
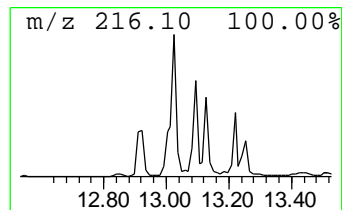
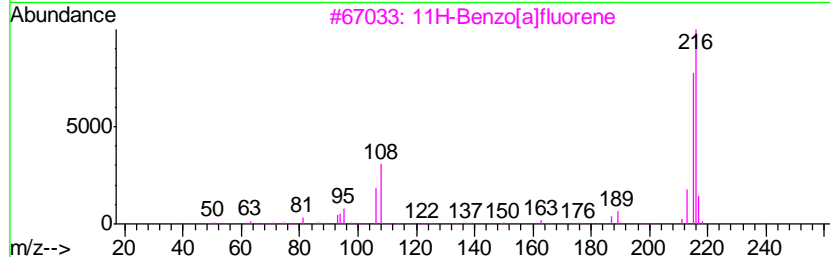
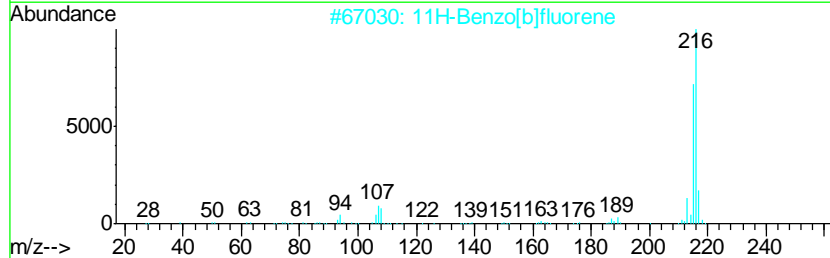
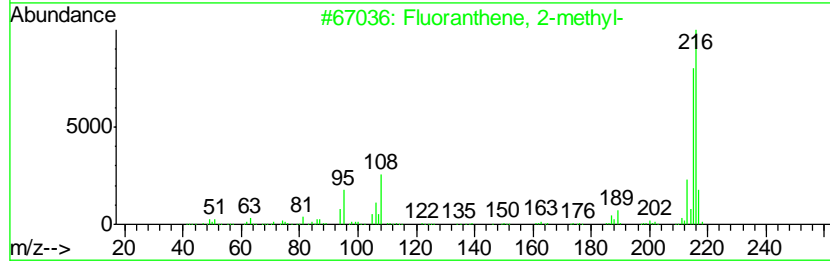
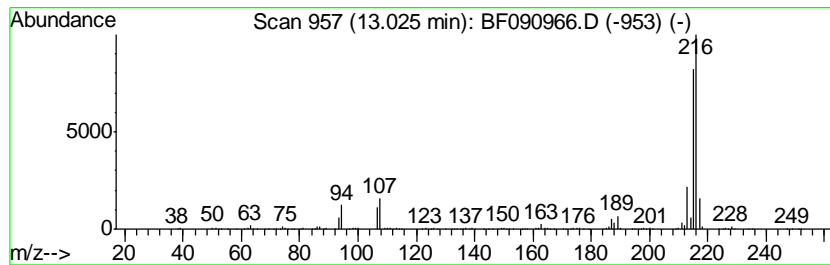
Quant Method : Z:\HPCHEM1\BNA F\METHODS\8270-BF102616.M
 Quant Title : ASP BNA STANDARDS FOR 5 POINT CALIBRATION

TIC Library : C:\DATABASE\NIST02.L
 TIC Integration Parameters: LSCINT.P

 Peak Number 11 Fluoranthene, 2-methyl- Concentration Rank 17

R.T.	EstConc	Area	Relative to ISTD	R.T.
13.03	5.69 ng	998204	Chrysene-d12	13.89

Hit#	of	Tentative ID	MW	MolForm	CAS#	Qual
1	5	Fluoranthene, 2-methyl-	216	C17H12	033543-31-6	95
2		11H-Benzo[b]fluorene	216	C17H12	000243-17-4	93
3		11H-Benzo[a]fluorene	216	C17H12	000238-84-6	91
4		Pyrene, 1-methyl-	216	C17H12	002381-21-7	87
5		7H-Benzo[c]fluorene	216	C17H12	000205-12-9	81



Data Path : Z:\HPCHEM1\BNA F\DATA\BF110116\
 Data File : BF090966.D
 Acq On : 1 Nov 2016 22:16
 Operator : UM/SJ
 Sample : H5463-03RE
 Misc :
 ALS Vial : 20 Sample Multiplier: 1

Instrument :
 BNA_F
 ClientSampleID :
 SB-2(0-2)RE

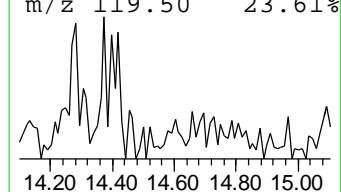
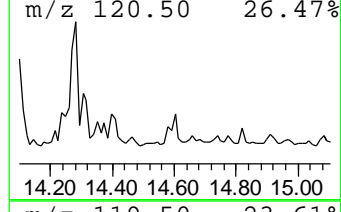
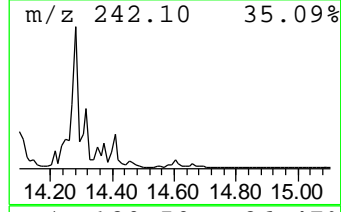
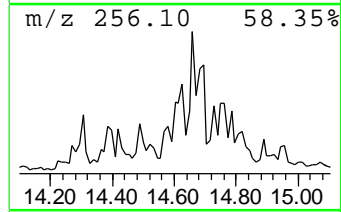
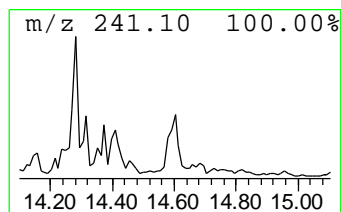
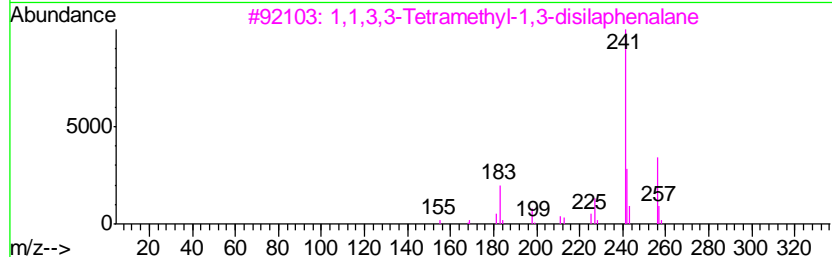
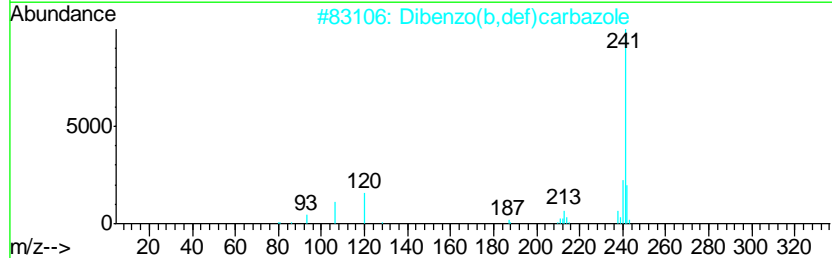
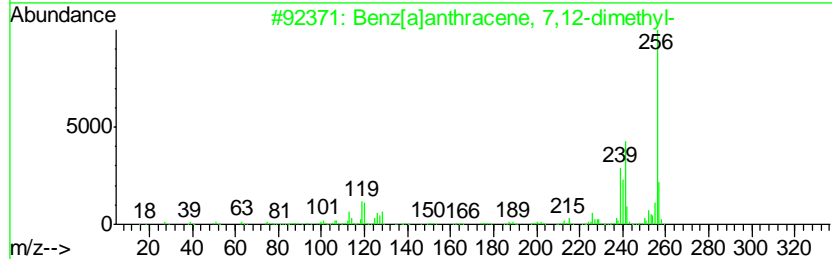
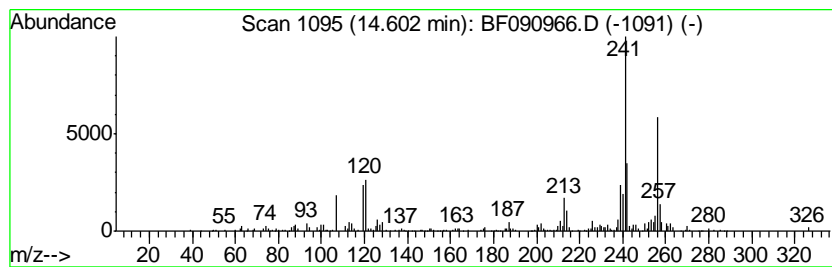
Quant Method : Z:\HPCHEM1\BNA F\METHODS\8270-BF102616.M
 Quant Title : ASP BNA STANDARDS FOR 5 POINT CALIBRATION

TIC Library : C:\DATABASE\NIST02.L
 TIC Integration Parameters: LSCINT.P

 Peak Number 12 Benz[a]anthracene, 7,12-dim... Concentration Rank 11

R.T.	EstConc	Area	Relative to ISTD	R.T.
14.60	6.31 ng	325968	Perylene-d12	15.29

Hit#	of	Tentative ID	MW	MolForm	CAS#	Qual
1	5	Benz[a]anthracene, 7,12-dimethyl-	256	C20H16	000057-97-6	94
2		Dibenzo(b,def)carbazole	241	C18H11N	104313-09-9	53
3		1,1,3,3-Tetramethyl-1,3-disilaph...	256	C15H20Si2	032538-51-5	53
4		Phenol, 4,4'-methylenebis[2,6-di...	256	C17H20O2	005384-21-4	50
5		Benzo[c]phenanthrene, 1,12-dimet...	256	C20H16	004076-43-1	43



Data Path : Z:\HPCHEM1\BNA F\DATA\BF110116\
 Data File : BF090966.D
 Acq On : 1 Nov 2016 22:16
 Operator : UM/SJ
 Sample : H5463-03RE
 Misc :
 ALS Vial : 20 Sample Multiplier: 1

Instrument :
 BNA_F
 ClientSampleID :
 SB-2(0-2)RE

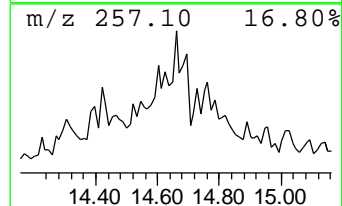
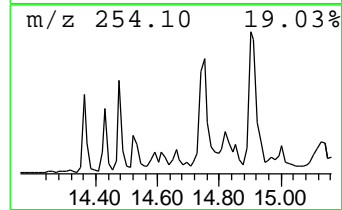
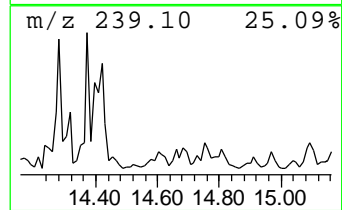
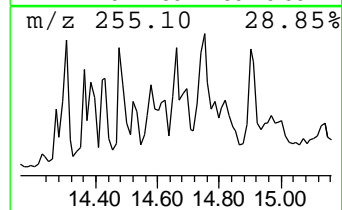
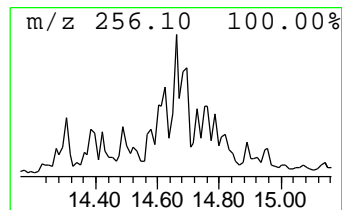
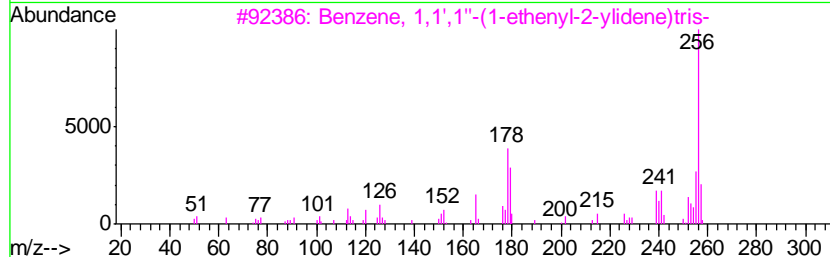
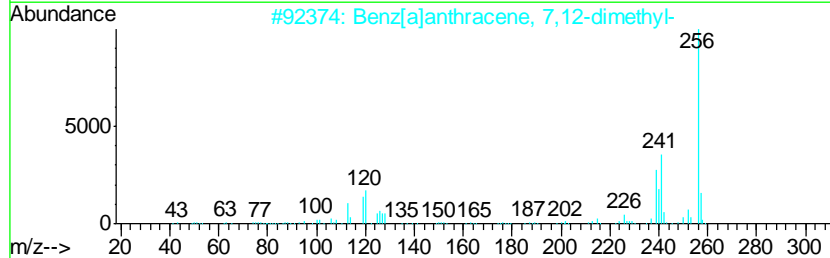
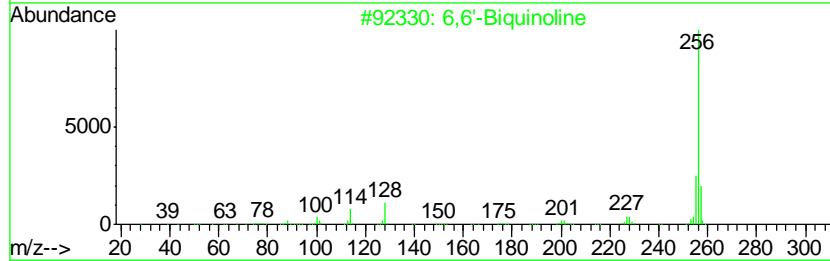
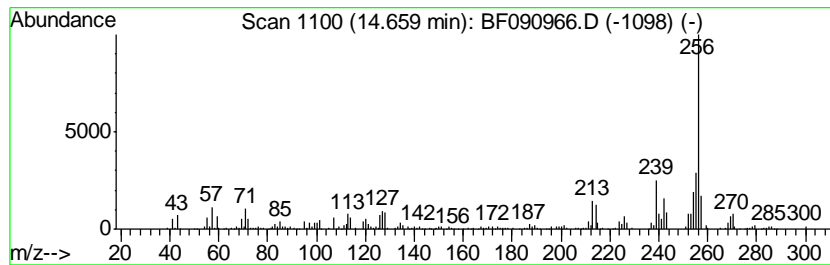
Quant Method : Z:\HPCHEM1\BNA F\METHODS\8270-BF102616.M
 Quant Title : ASP BNA STANDARDS FOR 5 POINT CALIBRATION

TIC Library : C:\DATABASE\NIST02.L
 TIC Integration Parameters: LSCINT.P

 Peak Number 13 6,6'-Biquinoline Concentration Rank 14

R.T.	EstConc	Area	Relative to ISTD	R.T.
14.66	5.86 ng	302271	Perylene-d12	15.29

Hit#	of	Tentative ID	MW	MolForm	CAS#	Qual
1	5	6,6'-Biquinoline	256	C18H12N2	000612-79-3	53
2		Benz[a]anthracene, 7,12-dimethyl-	256	C20H16	000057-97-6	52
3		Benzene, 1,1',1''-(1-ethenyl-2-y...	256	C20H16	000058-72-0	50
4		9H-Xanthen-9-one, 3,6-dihydroxy-...	256	C15H12O4	067065-96-7	50
5		2,4-Diamino-5-methyl-6-phenylthi...	256	C13H12N4S	042160-11-2	49



Data Path : Z:\HPCHEM1\BNA F\DATA\BF110116\
 Data File : BF090966.D
 Acq On : 1 Nov 2016 22:16
 Operator : UM/SJ
 Sample : H5463-03RE
 Misc :
 ALS Vial : 20 Sample Multiplier: 1

Instrument :
 BNA_F
 ClientSampleID :
 SB-2(0-2)RE

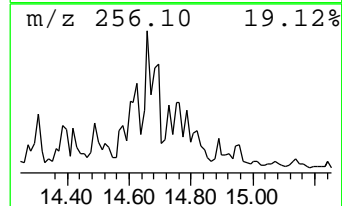
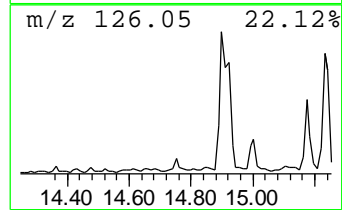
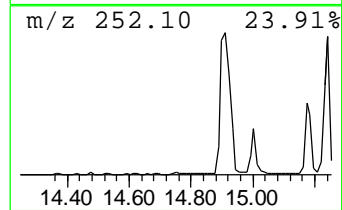
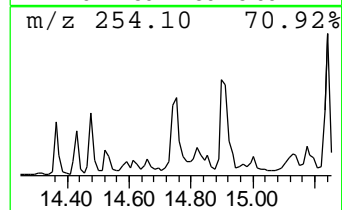
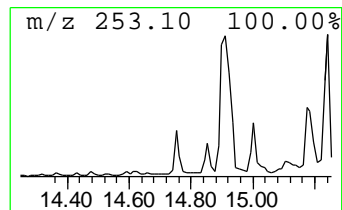
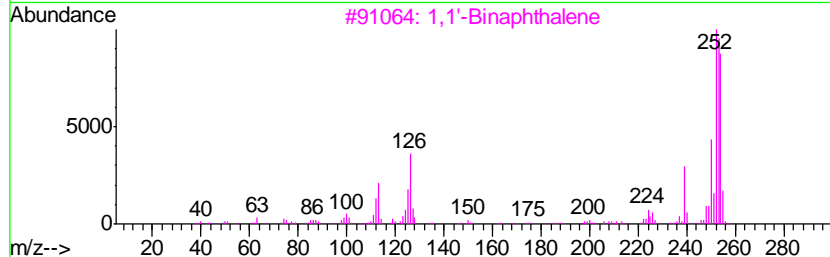
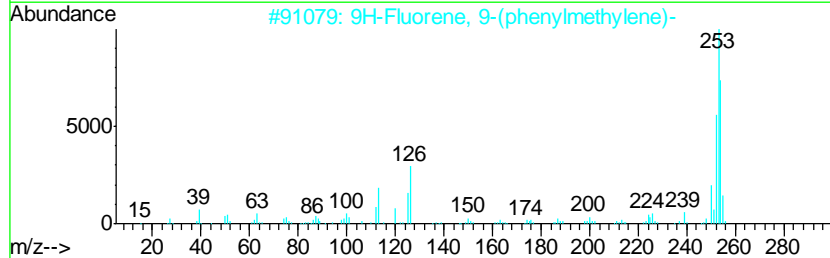
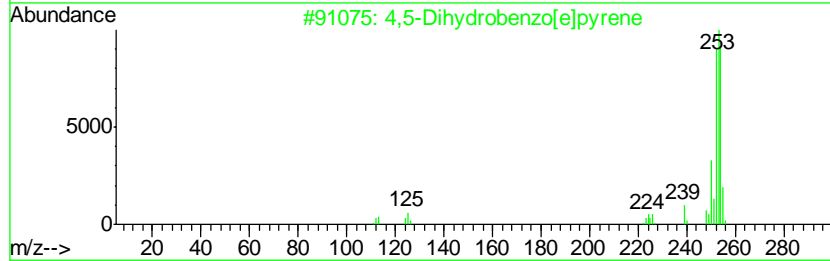
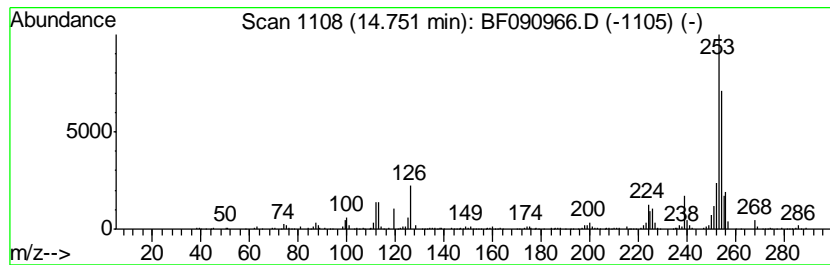
Quant Method : Z:\HPCHEM1\BNA F\METHODS\8270-BF102616.M
 Quant Title : ASP BNA STANDARDS FOR 5 POINT CALIBRATION

TIC Library : C:\DATABASE\NIST02.L
 TIC Integration Parameters: LSCINT.P

 Peak Number 14 4,5-Dihydrobenzo[e]pyrene Concentration Rank 9

R.T.	EstConc	Area	Relative to ISTD	R.T.
14.75	6.67 ng	344213	Perylene-d12	15.29

Hit#	of	Tentative ID	MW	MolForm	CAS#	Qual
1	5	4,5-Dihydrobenzo[e]pyrene	254	C20H14	095676-42-9	86
2		9H-Fluorene, 9-(phenylmethylene)-	254	C20H14	001836-87-9	64
3		1,1'-Binaphthalene	254	C20H14	000604-53-5	58
4		Pyrido[2,3-a]indole, 5-methoxy-2...	254	C16H18N2O	201991-45-9	58
5		Anthracene, 9-phenyl-	254	C20H14	000602-55-1	53



Data Path : Z:\HPCHEM1\BNA F\DATA\BF110116\
 Data File : BF090966.D
 Acq On : 1 Nov 2016 22:16
 Operator : UM/SJ
 Sample : H5463-03RE
 Misc :
 ALS Vial : 20 Sample Multiplier: 1

Instrument :
 BNA_F
 ClientSampleID :
 SB-2(0-2)RE

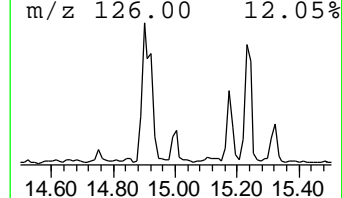
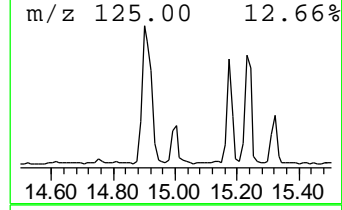
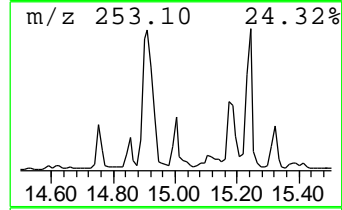
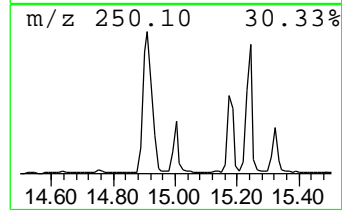
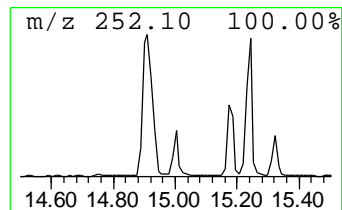
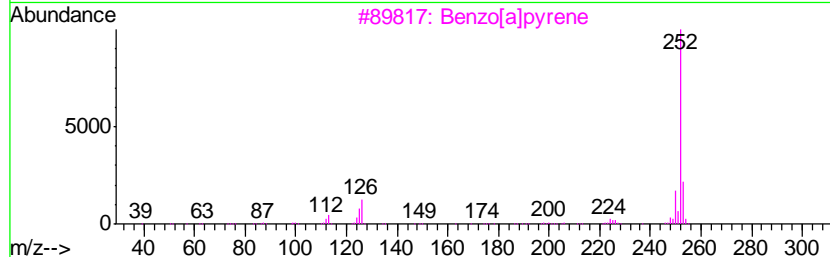
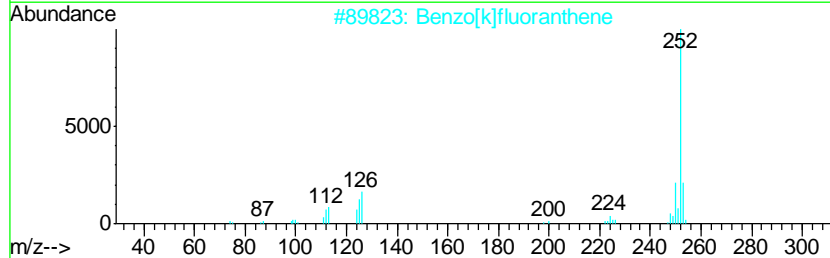
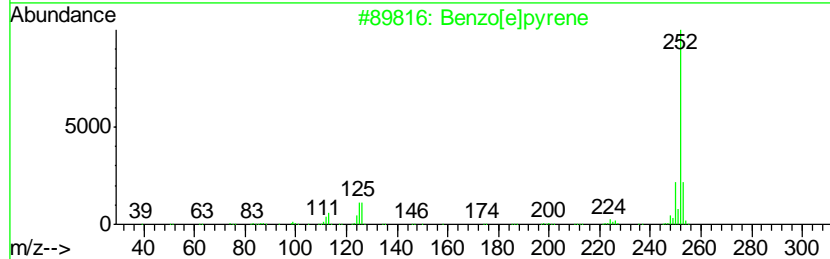
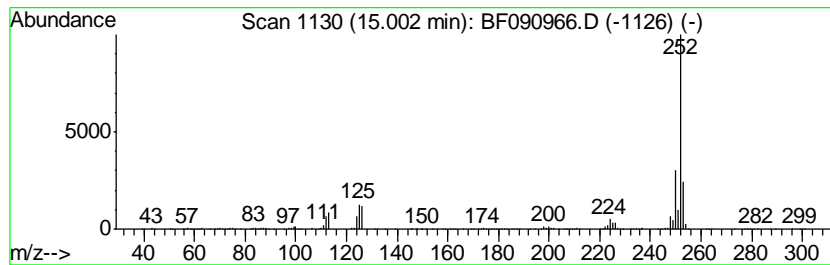
Quant Method : Z:\HPCHEM1\BNA F\METHODS\8270-BF102616.M
 Quant Title : ASP BNA STANDARDS FOR 5 POINT CALIBRATION

TIC Library : C:\DATABASE\NIST02.L
 TIC Integration Parameters: LSCINT.P

 Peak Number 15 Benzo[e]pyrene Concentration Rank 6

R.T.	EstConc	Area	Relative to ISTD	R.T.
15.00	10.01 ng	516653	Perylene-d12	15.29

Hit#	of	Tentative ID	MW	MolForm	CAS#	Qual
1	5	Benzo[e]pyrene	252	C20H12	000192-97-2	98
2		Benzo[k]fluoranthene	252	C20H12	000207-08-9	98
3		Benzo[a]pyrene	252	C20H12	000050-32-8	96
4		Benzo[e]acephenanthrylene	252	C20H12	000205-99-2	94
5		Benzo[j]fluoranthene	252	C20H12	000205-82-3	90



Data Path : Z:\HPCHEM1\BNA F\DATA\BF110116\
 Data File : BF090966.D
 Acq On : 1 Nov 2016 22:16
 Operator : UM/SJ
 Sample : H5463-03RE
 Misc :
 ALS Vial : 20 Sample Multiplier: 1

Instrument :
 BNA_F
 ClientSampled :
 SB-2(0-2)RE

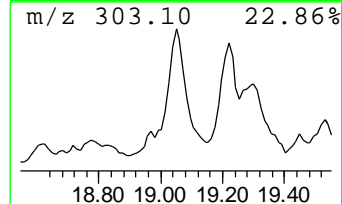
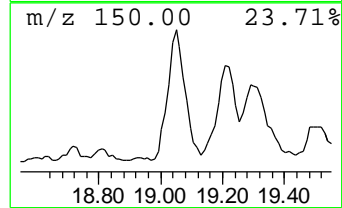
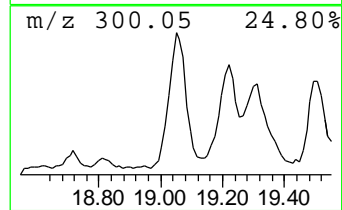
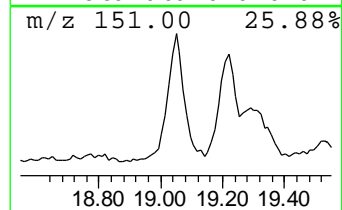
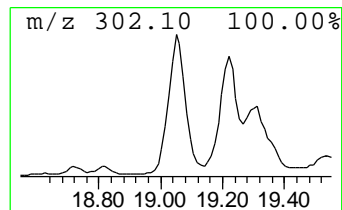
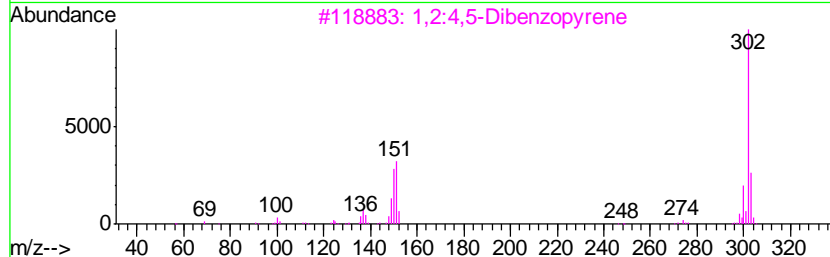
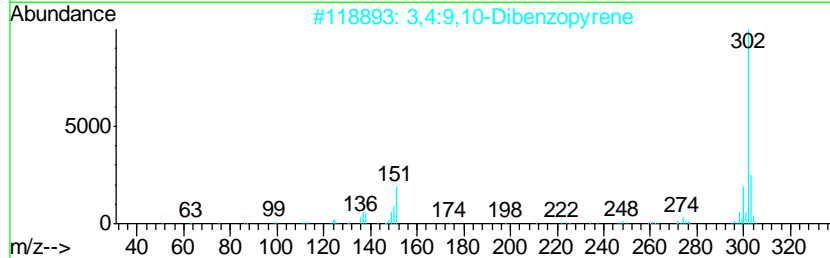
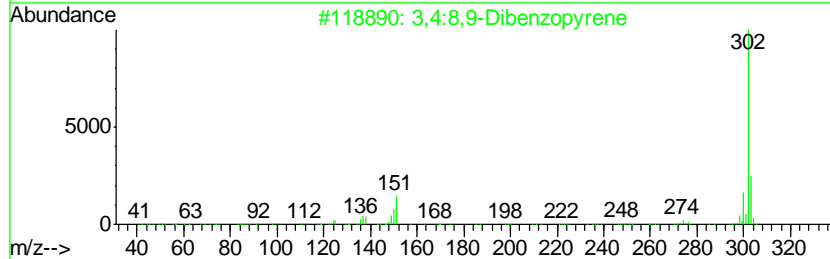
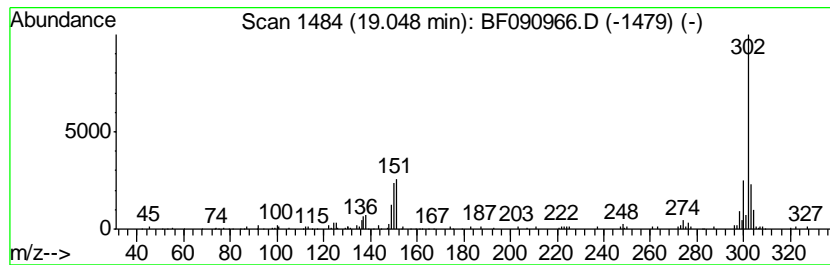
Quant Method : Z:\HPCHEM1\BNA F\METHODS\8270-BF102616.M
 Quant Title : ASP BNA STANDARDS FOR 5 POINT CALIBRATION

TIC Library : C:\DATABASE\NIST02.L
 TIC Integration Parameters: LSCINT.P

 Peak Number 19 3,4:8,9-Dibenzopyrene Concentration Rank 10

R.T.	EstConc	Area	Relative to ISTD	R.T.
19.05	6.65 ng	343354	Perylene-d12	15.29

Hit#	of	Tentative ID	MW	MolForm	CAS#	Qual
1	5	3,4:8,9-Dibenzopyrene	302	C24H14	000189-64-0	97
2		3,4:9,10-Dibenzopyrene	302	C24H14	000189-55-9	96
3		1,2:4,5-Dibenzopyrene	302	C24H14	000192-65-4	94
4		Dibenz(a,e)aceanthrylene	302	C24H14	005385-75-1	93
5		1,2:3,4-Dibenzopyrene	302	C24H14	000191-30-0	70



Data Path : Z:\HPCHEM1\BNA F\DATA\BF110116\
 Data File : BF090966.D
 Acq On : 1 Nov 2016 22:16
 Operator : UM/SJ
 Sample : H5463-03RE
 Misc :
 ALS Vial : 20 Sample Multiplier: 1

Instrument :
 BNA_F
 ClientSampled :
 SB-2(0-2)RE

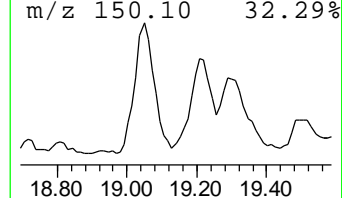
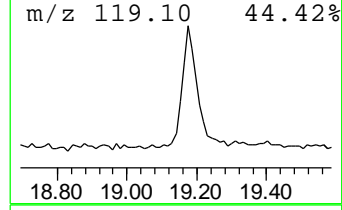
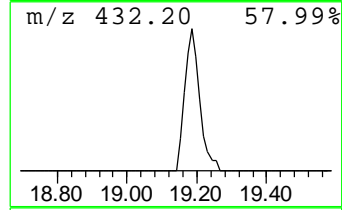
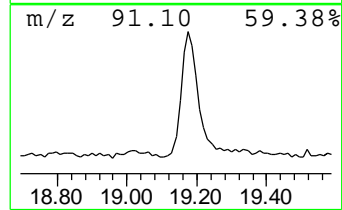
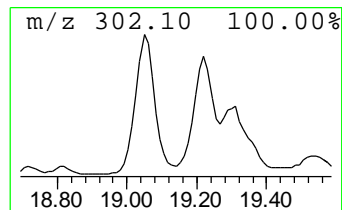
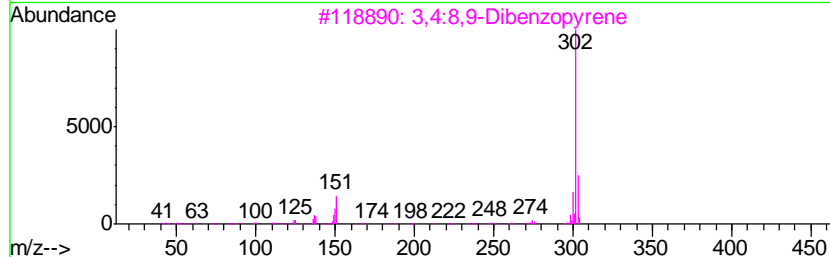
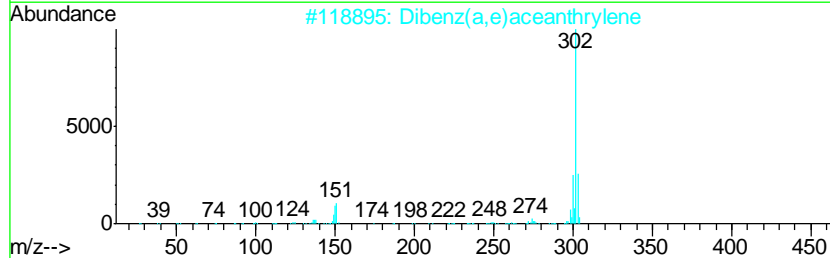
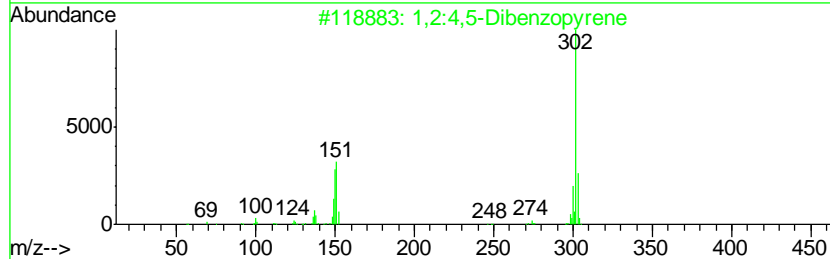
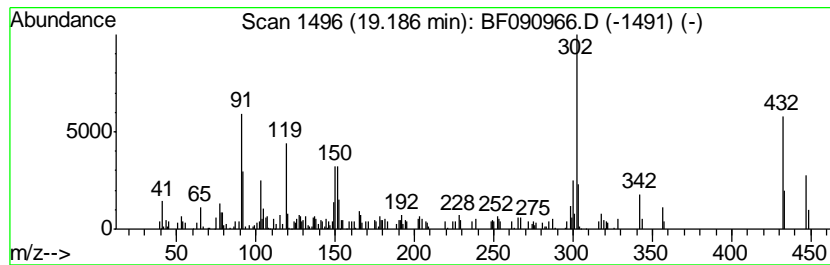
Quant Method : Z:\HPCHEM1\BNA F\METHODS\8270-BF102616.M
 Quant Title : ASP BNA STANDARDS FOR 5 POINT CALIBRATION

TIC Library : C:\DATABASE\NIST02.L
 TIC Integration Parameters: LSCINT.P

 Peak Number 20 1,2:4,5-Dibenzopyrene Concentration Rank 8

R.T.	EstConc	Area	Relative to ISTD	R.T.
19.19	8.87 ng	457732	Perylene-d12	15.29

Hit#	of	Tentative ID	MW	MolForm	CAS#	Qual
1	5	1,2:4,5-Dibenzopyrene	302	C24H14	000192-65-4	55
2		Dibenz(a,e)aceanthrylene	302	C24H14	005385-75-1	51
3		3,4:8,9-Dibenzopyrene	302	C24H14	000189-64-0	38
4		3,4:9,10-Dibenzopyrene	302	C24H14	000189-55-9	38
5		1,2:3,4-Dibenzopyrene	302	C24H14	000191-30-0	38



Data Path : Z:\HPCHEM1\BNA_F\DATA\BF110116\
 Data File : BF090966.D
 Acq On : 1 Nov 2016 22:16
 Operator : UM/SJ
 Sample : H5463-03RE
 Misc :
 ALS Vial : 20 Sample Multiplier: 1

Instrument :
 BNA_F
 ClientSampleId :
 SB-2(0-2)RE

Quant Method : Z:\HPCHEM1\BNA_F\METHODS\8270-BF102616.M
 Quant Title : ASP BNA STANDARDS FOR 5 POINT CALIBRATION

TIC Library : C:\DATABASE\NIST02.L
 TIC Integration Parameters: LSCINT.P

TIC Top Hit name	RT	EstConc	Units	Response	--Internal Standard--			
					#	RT	Resp	Conc
2-Pentanone, 4-hy...	4.90	21.5	ng	1161630	1	6.74	1079200	20.0
unknown6.51	6.51	98.2	ng	5296890	1	6.74	1079200	20.0
Tridecane, 4-methyl-	10.69	9.6	ng	693967	4	11.25	1450240	20.0
Phenanthrene, 2-m...	11.79	5.9	ng	430465	4	11.25	1450240	20.0
4H-Cyclopenta[def...	11.87	15.4	ng	1114630	4	11.25	1450240	20.0
Heneicosane	11.97	4.5	ng	327549	4	11.25	1450240	20.0
Phenanthrene, 2,5...	12.31	6.0	ng	437909	4	11.25	1450240	20.0
Acephenanthrylene...	12.35	5.8	ng	423219	4	11.25	1450240	20.0
Fluoranthene, 2-m...	13.03	5.7	ng	998204	5	13.89	3506440	20.0
Benz[a]anthracene...	14.60	6.3	ng	325968	6	15.29	1032430	20.0
6,6'-Biquinoline	14.66	5.9	ng	302271	6	15.29	1032430	20.0
4,5-Dihydrobenzo[...	14.75	6.7	ng	344213	6	15.29	1032430	20.0
Benzo[e]pyrene	15.00	10.0	ng	516653	6	15.29	1032430	20.0
3,4:8,9-Dibenzopy...	19.05	6.7	ng	343354	6	15.29	1032430	20.0
1,2:4,5-Dibenzopy...	19.19	8.9	ng	457732	6	15.29	1032430	20.0