

Data Path : \\74.0.250.170\SVOASRV\HPCHEM1\BNA F\DATA\BF110117\
 Data File : BF100062.D
 Acq On : 1 Nov 2017 23:18
 Operator : SJ/JU
 Sample : I6140-01
 Misc :
 ALS Vial : 20 Sample Multiplier: 1

Instrument :
 BNA_F
 ClientSampled :
 DSN001

Manual Integrations
 APPROVED

Sohil
 11/2/2017 4:27:38 PM

Quant Time: Nov 02 04:21:25 2017
 Quant Method : Z:\HPCHEM1\BNA F\METHODS\8270-BF102317.M
 Quant Title : ASP BNA STANDARDS FOR 5 POINT CALIBRATION
 QLast Update : Wed Nov 01 18:13:08 2017
 Response via : Initial Calibration

Internal Standards	R.T.	QIon	Response	Conc	Units	Dev(Min)
1) 1,4-Dichlorobenzene-d4	6.78	152	88331	20.00	ng	0.00
21) Naphthalene-d8	8.06	136	351049	20.00	ng	0.00
38) Acenaphthene-d10	9.82	164	148477	20.00	ng	0.00
63) Phenanthrene-d10	11.33	188	229363	20.00	ng	0.02
75) Chrysene-d12	14.47	240	167918m	20.00	ng	0.50
86) Perylene-d12	16.52	264	160148m	20.00	ng	1.05
System Monitoring Compounds						
5) 2-Fluorophenol	5.40	112	357061	63.46	ng	0.00
7) Phenol-d6	6.42	99	278489	41.74	ng	0.00
23) Nitrobenzene-d5	7.35	82	431199	79.08	ng	0.00
41) 2,4,6-Tribromophenol	10.62	330	151493	111.96	ng	0.00
44) 2-Fluorobiphenyl	9.14	172	892774	92.77	ng	0.00
78) Terphenyl-d14	13.10	244	638148m	83.05	ng	0.20
Target Compounds						
10) Phenol	6.44	94	15244	2.081	ng	Qvalue # 75

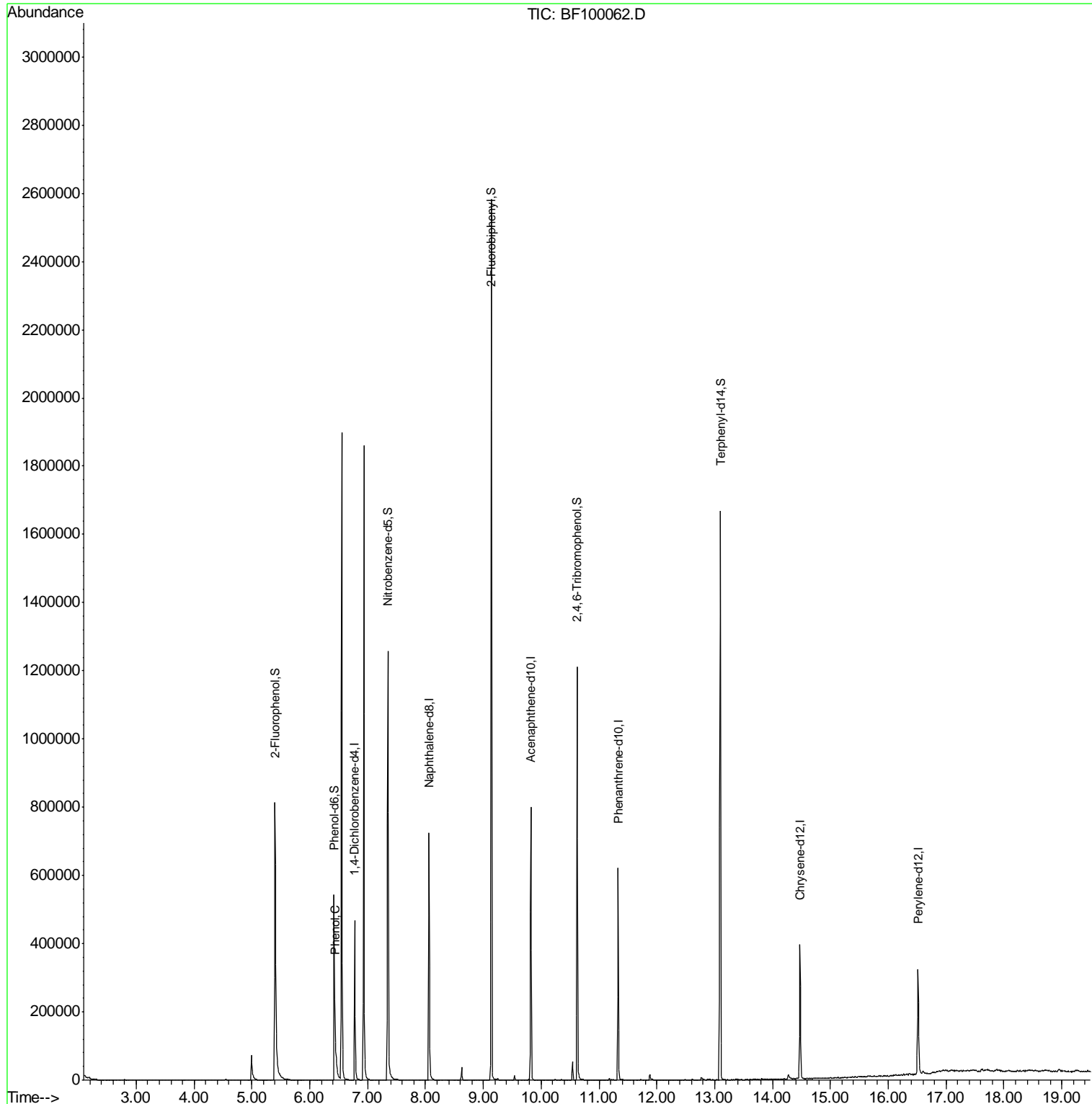
(#) = qualifier out of range (m) = manual integration (+) = signals summed

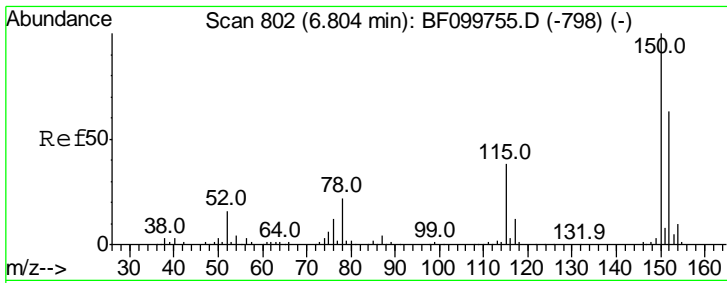
Data Path : \\74.0.250.170\SVOASRV\HPCHEM1\BNA F\DATA\BF110117\
 Data File : BF100062.D
 Acq On : 1 Nov 2017 23:18
 Operator : SJ/JU
 Sample : I6140-01
 Misc :
 ALS Vial : 20 Sample Multiplier: 1

Instrument :
 BNA_F
ClientSampled :
 DSN001

Manual Integrations
APPROVED
 Sohil
 11/2/2017 4:27:38 PM

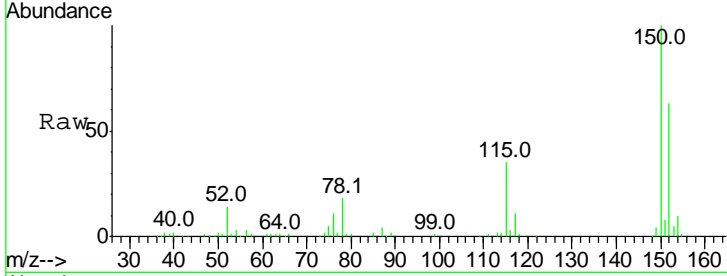
Quant Time: Nov 02 04:21:25 2017
 Quant Method : Z:\HPCHEM1\BNA F\METHODS\8270-BF102317.M
 Quant Title : ASP BNA STANDARDS FOR 5 POINT CALIBRATION
 QLast Update : Wed Nov 01 18:13:08 2017
 Response via : Initial Calibration





#1
 1,4-Dichlorobenzene-d4
 Concen: 20.000 ng
 RT: 6.78 min Scan# 798
 Delta R.T. 0.01 min
 Lab File: BF100062.D
 Acq: 1 Nov 2017 23:18

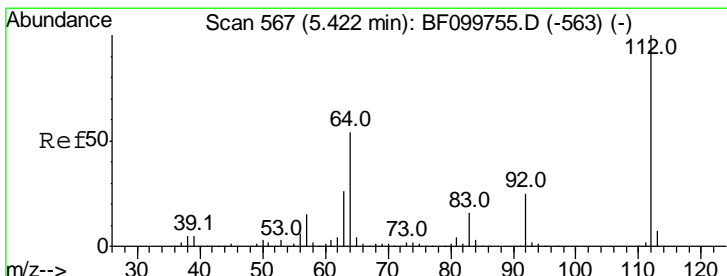
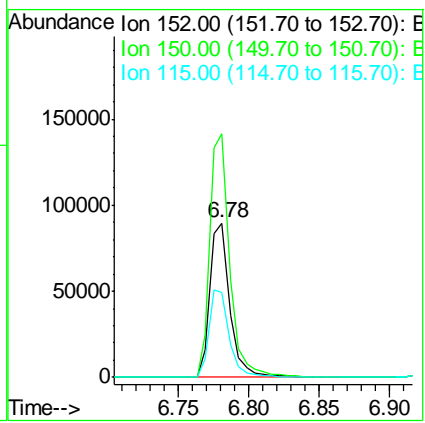
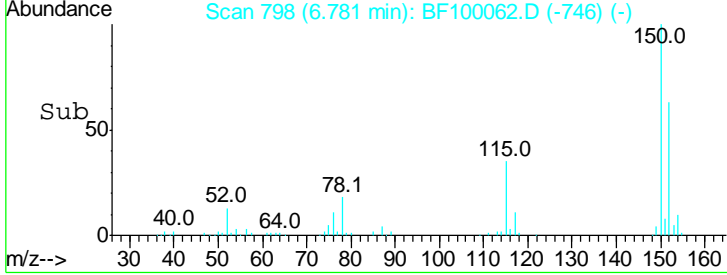
Instrument :
 BNA_F
ClientSampled :
 DSN001



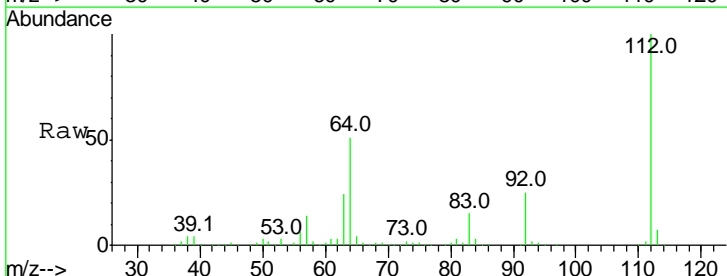
Tot Ion:152 Resp: 88331

Ion	Ratio	Lower	Upper
152	100		
150	158.1	124.6	186.8
115	55.1	50.1	75.1

Manual Integrations
APPROVED
 Sohil
 11/2/2017 4:27:38 PM

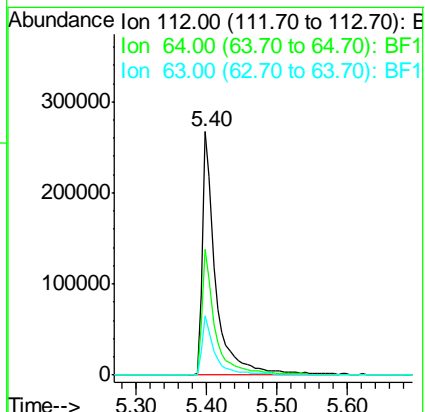
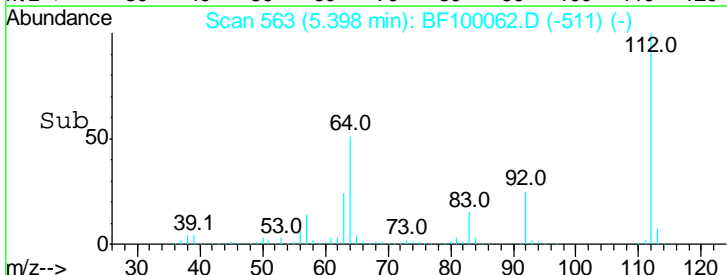


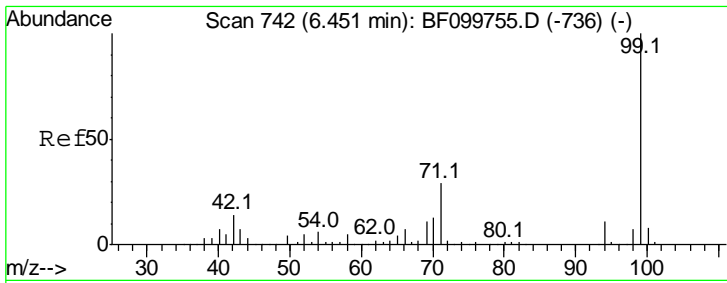
#5
 2-Fluorophenol
 Concen: 63.463 ng
 RT: 5.40 min Scan# 563
 Delta R.T. 0.01 min
 Lab File: BF100062.D
 Acq: 1 Nov 2017 23:18



Tgt Ion:112 Resp: 357061

Ion	Ratio	Lower	Upper
112	100		
64	51.5	47.9	71.9
63	24.3	23.7	35.5



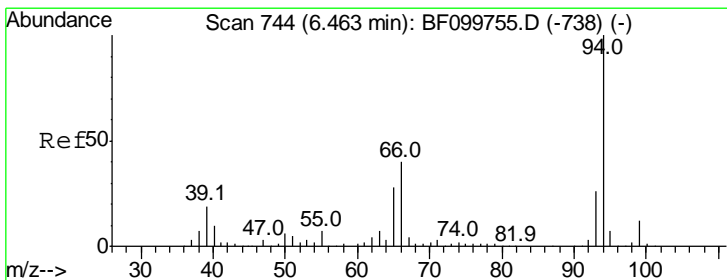
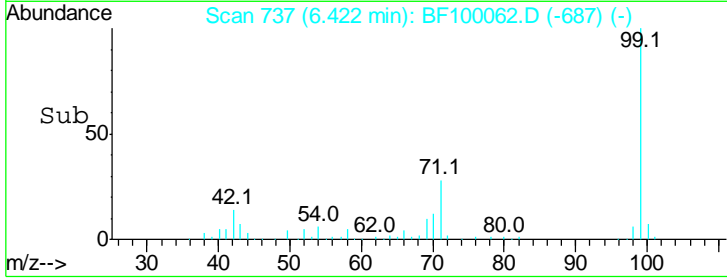
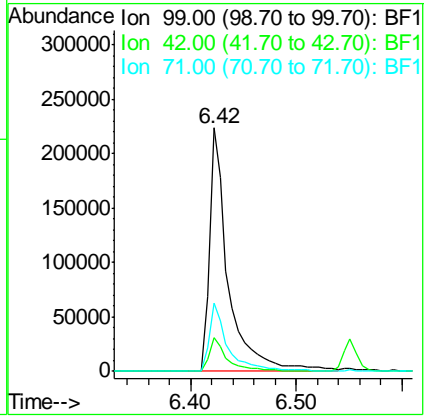
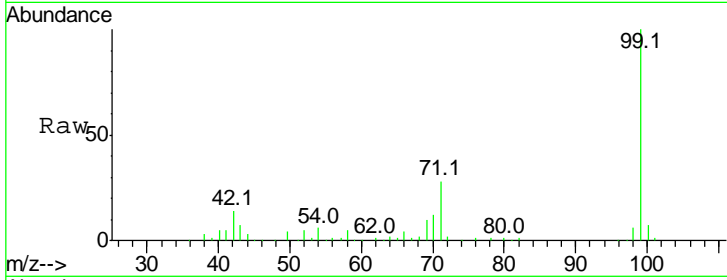


#7
 Phenol-d6
 Concen: 41.745 ng
 RT: 6.42 min Scan# 737
 Delta R.T. -0.01 min
 Lab File: BF100062.D
 Acq: 1 Nov 2017 23:18

Instrument :
 BNA_F
ClientSampled :
 DSN001

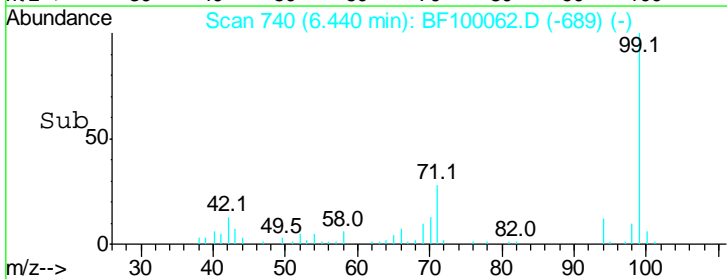
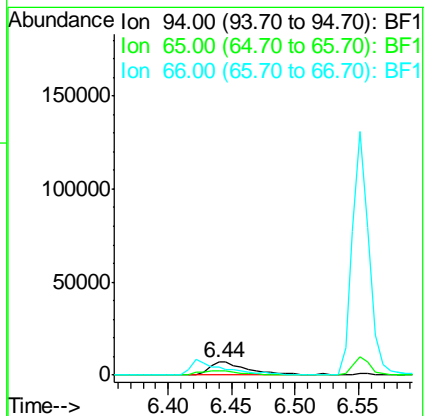
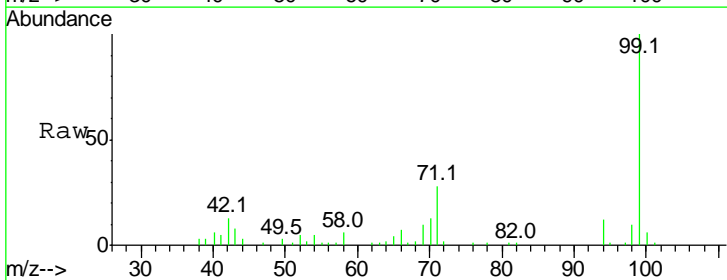
Tgt Ion	Resp	Lower	Upper
99	100		
42	14.1	14.5	21.7#
71	27.9	25.4	38.0

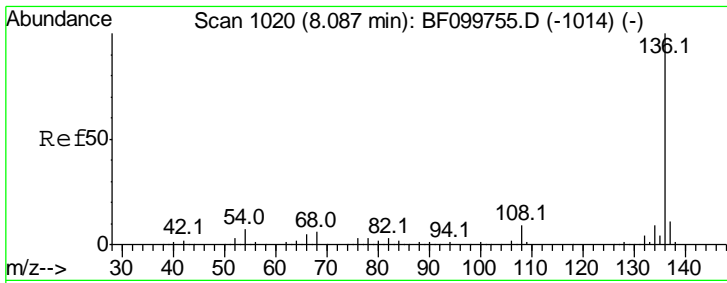
Manual Integrations
APPROVED
 Sohil
 11/2/2017 4:27:38 PM



#10
 Phenol
 Concen: 2.081 ng
 RT: 6.44 min Scan# 740
 Delta R.T. 0.00 min
 Lab File: BF100062.D
 Acq: 1 Nov 2017 23:18

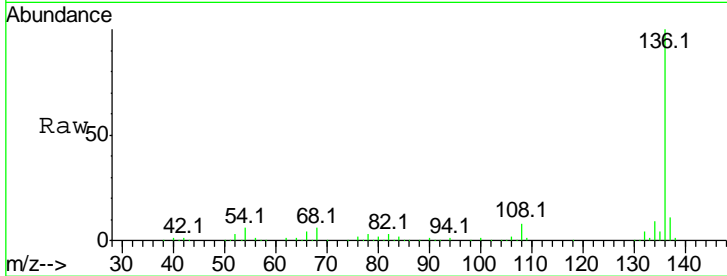
Tgt Ion	Resp	Lower	Upper
94	100		
65	29.9	7.9	47.9
66	60.1	16.2	56.2#





#21
 Naphthalene-d8
 Concen: 20.000 ng
 RT: 8.06 min Scan# 1016
 Delta R.T. 0.00 min
 Lab File: BF100062.D
 Acq: 1 Nov 2017 23:18

Instrument :
 BNA_F
 ClientSampled :
 DSN001

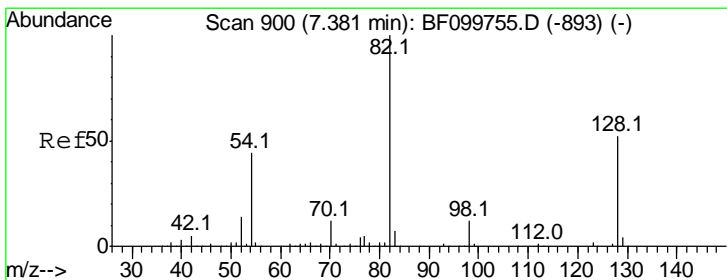
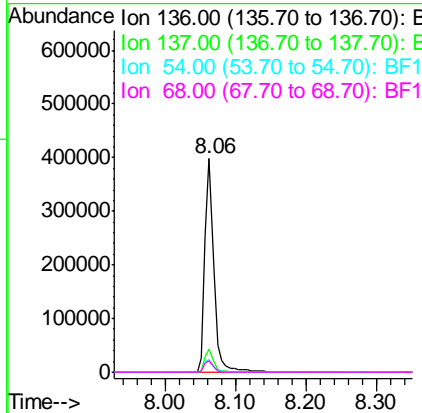
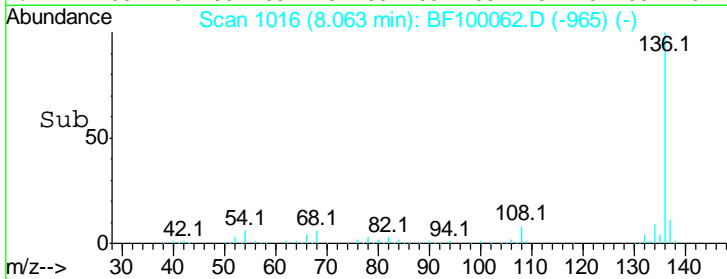


Tgt Ion: 136 Resp: 351049

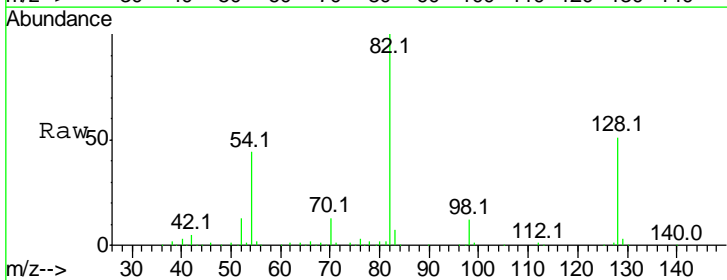
Ion	Ratio	Lower	Upper
136	100		
137	10.6	8.9	13.3
54	6.1	6.6	9.8#
68	5.5	5.0	7.4

Manual Integrations
 APPROVED

Sohil
 11/2/2017 4:27:38 PM

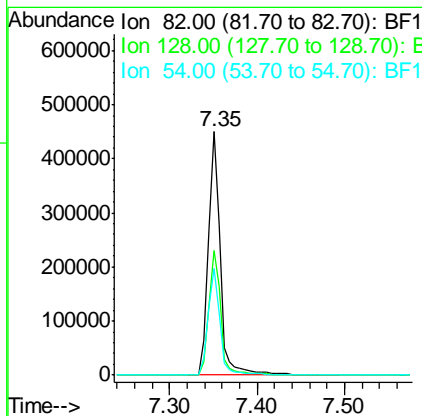
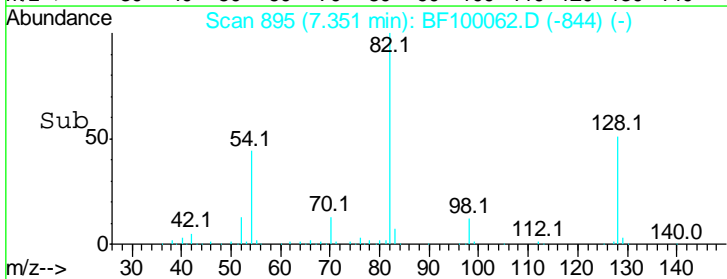


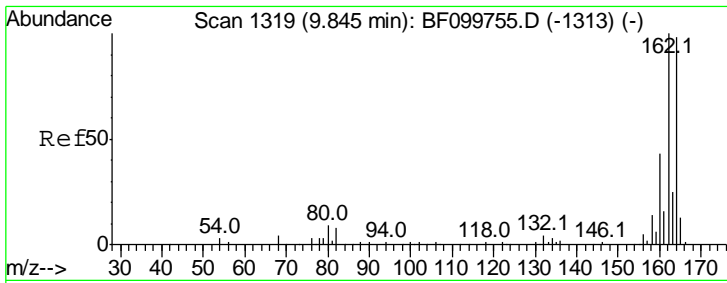
#23
 Nitrobenzene-d5
 Concen: 79.080 ng
 RT: 7.35 min Scan# 895
 Delta R.T. 0.00 min
 Lab File: BF100062.D
 Acq: 1 Nov 2017 23:18



Tgt Ion: 82 Resp: 431199

Ion	Ratio	Lower	Upper
82	100		
128	51.2	36.1	54.1
54	43.6	41.4	62.2



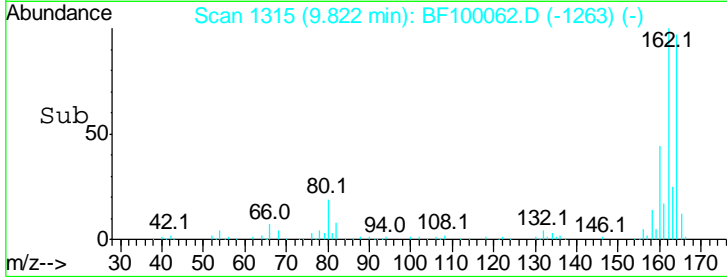
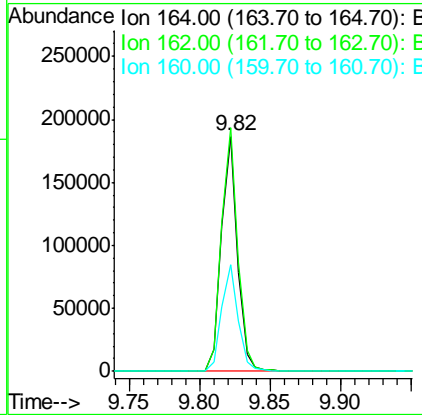
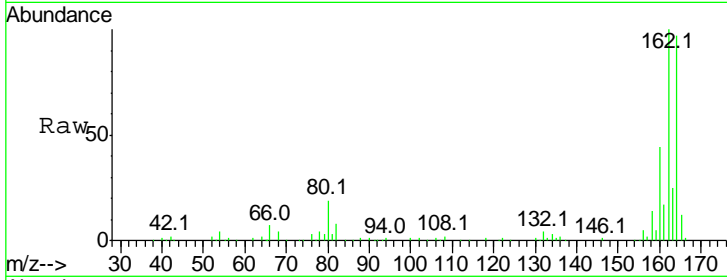


#38
 Acenaphthene-d10
 Concen: 20.000 ng
 RT: 9.82 min Scan# 1315
 Delta R.T. 0.01 min
 Lab File: BF100062.D
 Acq: 1 Nov 2017 23:18

Instrument :
 BNA_F
ClientSampled :
 DSN001

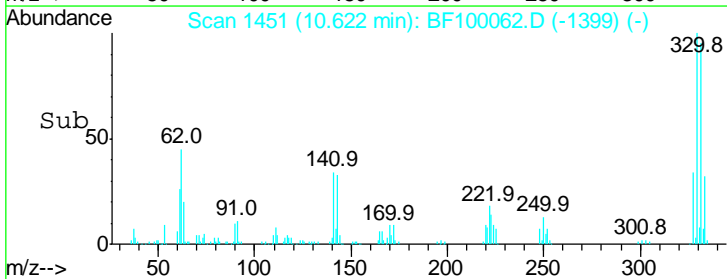
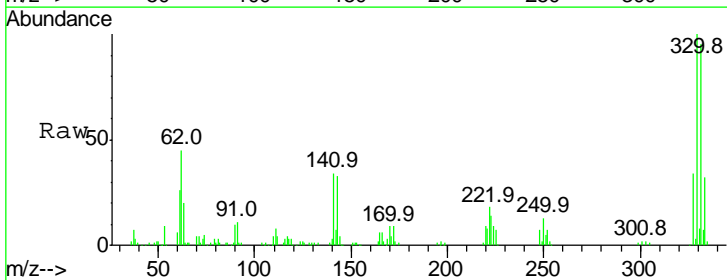
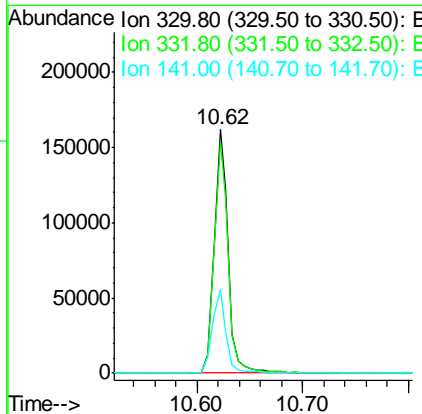
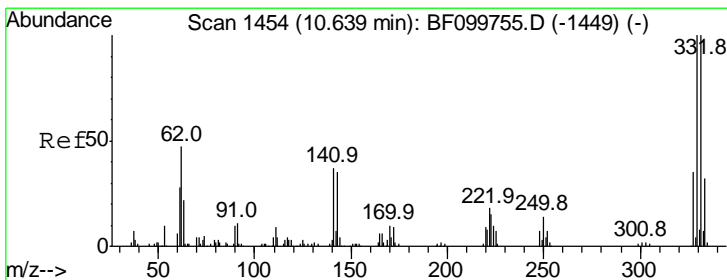
Tgt Ion	Resp	Lower	Upper
164	100		
162	103.6	86.1	129.1
160	45.6	38.3	57.5

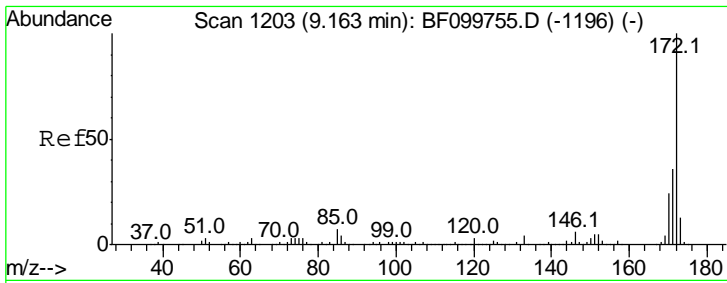
Manual Integrations
APPROVED
 Sohil
 11/2/2017 4:27:38 PM



#41
 2,4,6-Tribromophenol
 Concen: 111.960 ng
 RT: 10.62 min Scan# 1451
 Delta R.T. 0.01 min
 Lab File: BF100062.D
 Acq: 1 Nov 2017 23:18

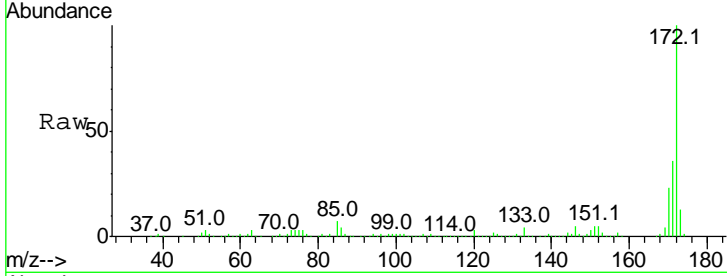
Tgt Ion	Resp	Lower	Upper
330	100		
332	96.2	77.0	115.6
141	33.8	29.9	44.9





#44
 2-Fluorobiphenyl
 Concen: 92.769 ng
 RT: 9.14 min Scan# 1199
 Delta R.T. 0.01 min
 Lab File: BF100062.D
 Acq: 1 Nov 2017 23:18

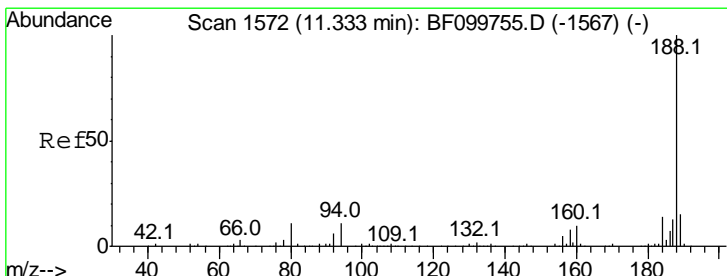
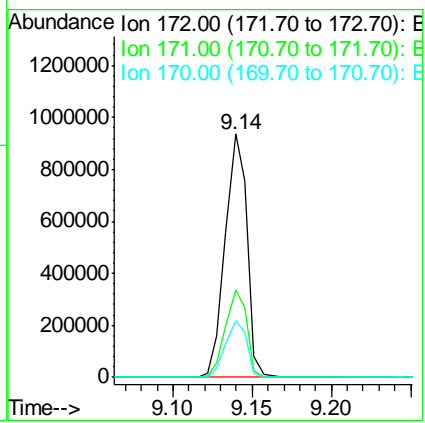
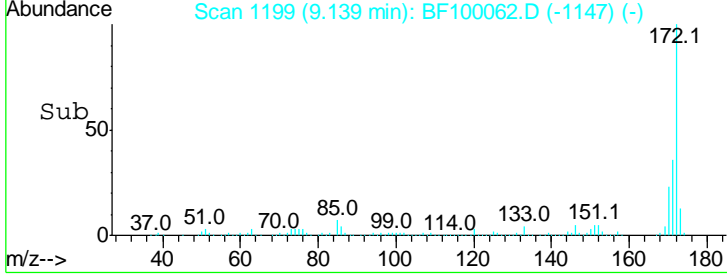
Instrument :
 BNA_F
ClientSampled :
 DSN001



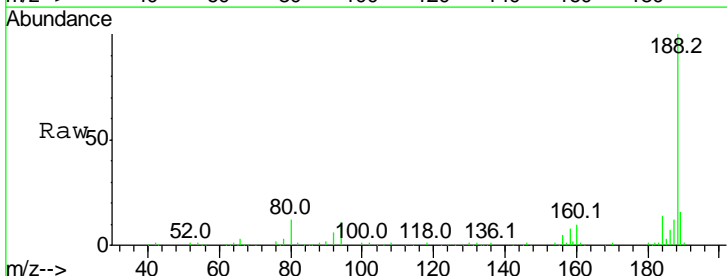
Tgt Ion: 172 Resp: 892774

Ion	Ratio	Lower	Upper
172	100		
171	35.7	29.7	44.5
170	23.1	19.6	29.4

Manual Integrations
APPROVED
 Sohil
 11/2/2017 4:27:38 PM

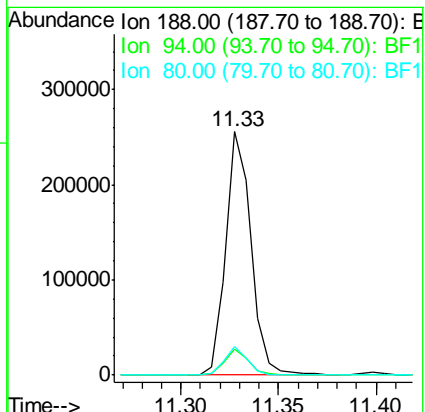
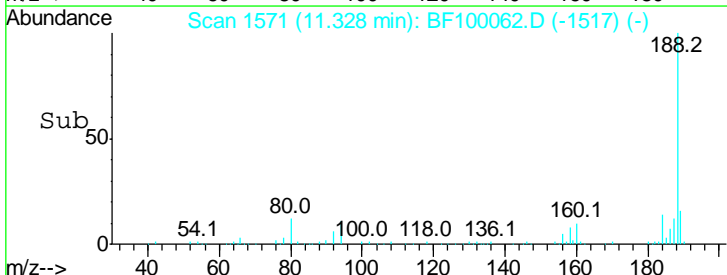


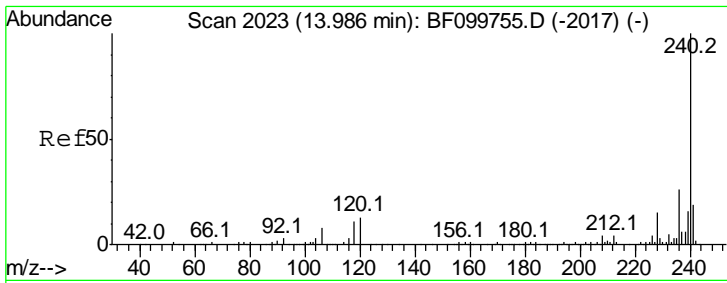
#63
 Phenanthrene-d10
 Concen: 20.000 ng
 RT: 11.33 min Scan# 1571
 Delta R.T. 0.02 min
 Lab File: BF100062.D
 Acq: 1 Nov 2017 23:18



Tgt Ion: 188 Resp: 229363

Ion	Ratio	Lower	Upper
188	100		
94	10.7	8.5	12.7
80	11.6	9.2	13.8





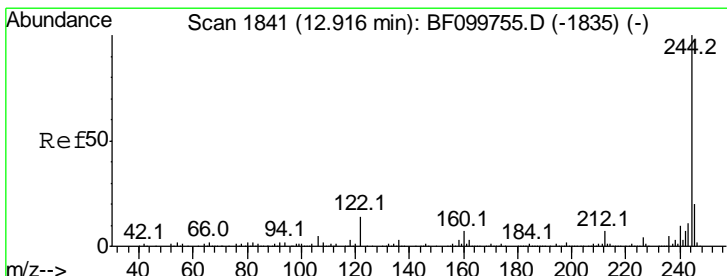
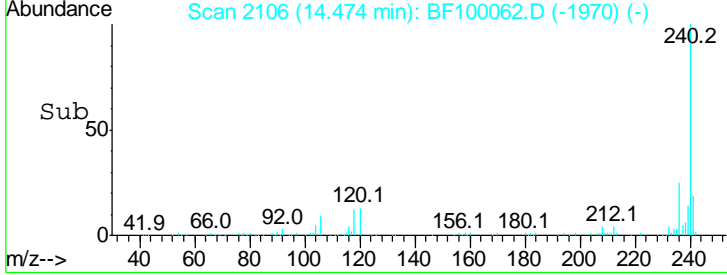
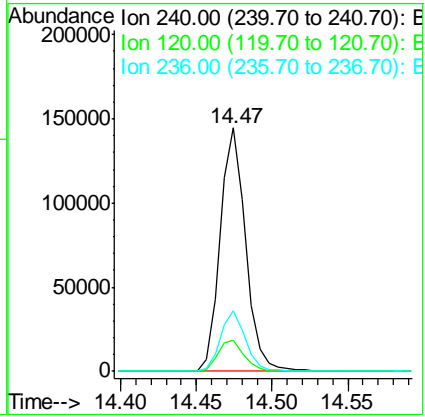
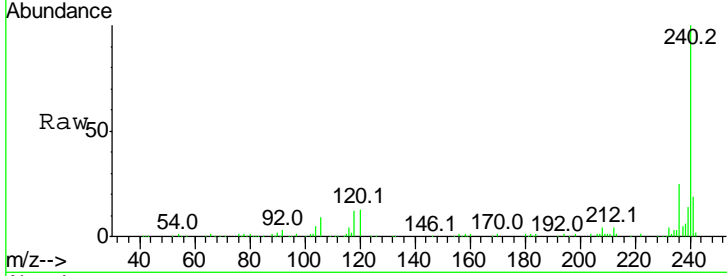
#75
 Chrysene-d12
 Concen: 20.000 ng m
 RT: 14.47 min Scan# 2106
 Delta R.T. 0.50 min
 Lab File: BF100062.D
 Acq: 1 Nov 2017 23:18

Instrument :
 BNA_F
 ClientSampled :
 DSN001

Tgt Ion	Resp	Lower	Upper
240	100		
120	12.9	9.5	14.3
236	25.1	20.7	31.1

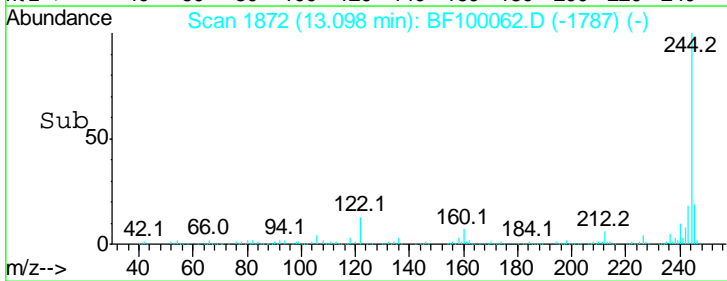
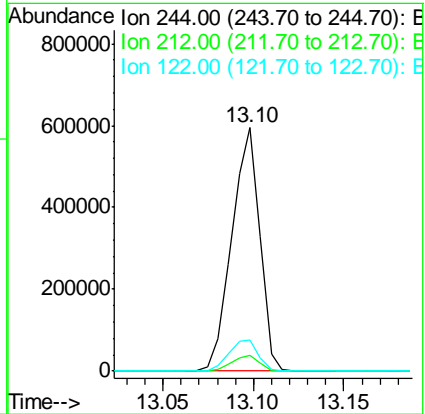
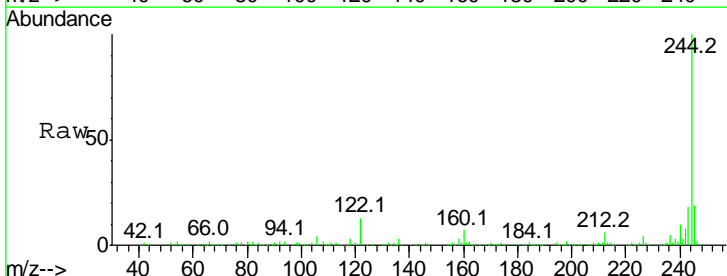
Manual Integrations
 APPROVED

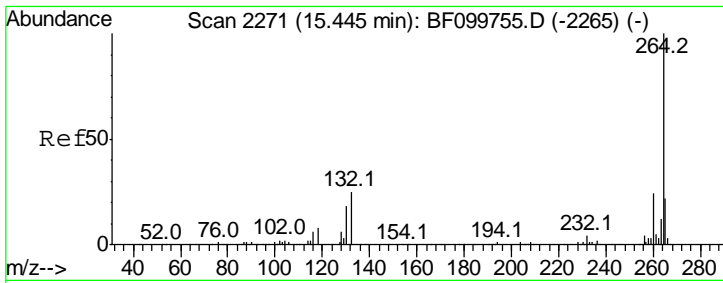
Sohil
 11/2/2017 4:27:38 PM



#78
 Terphenyl-d14
 Concen: 83.052 ng m
 RT: 13.10 min Scan# 1872
 Delta R.T. 0.20 min
 Lab File: BF100062.D
 Acq: 1 Nov 2017 23:18

Tgt Ion	Resp	Lower	Upper
244	100		
212	6.4	5.4	8.0
122	12.8	11.0	16.4





#86
 Perylene-d12
 Concen: 20.000 ng/ml
 RT: 16.52 min Scan# 2453
 Delta R.T. 1.05 min
 Lab File: BF100062.D
 Acq: 1 Nov 2017 23:18

Instrument :
 BNA_F
ClientSampled :
 DSN001

Tot Ion	Ratio	Lower	Upper
264	100		
260	23.2	19.2	28.8
265	20.9	17.5	26.3

Manual Integrations
APPROVED
 Sohil
 11/2/2017 4:27:38 PM

