

Data Path : \\74.0.250.170\SVOASRV\HPCHEM1\BNA F\DATA\BF110117\  
 Data File : BF100077.D  
 Acq On : 2 Nov 2017 6:32  
 Operator : SJ/JU  
 Sample : I6153-03  
 Misc :  
 ALS Vial : 33 Sample Multiplier: 1

**Instrument :**  
 BNA\_F  
**ClientSampleId :**  
 WC-102517

**Manual Integrations**  
**APPROVED**  
 Sohil  
 11/2/2017 4:30:24 PM

Quant Time: Nov 02 16:25:04 2017  
 Quant Method : Z:\HPCHEM1\BNA F\METHODS\8270-BF102317.M  
 Quant Title : ASP BNA STANDARDS FOR 5 POINT CALIBRATION  
 QLast Update : Thu Nov 02 14:34:05 2017  
 Response via : Initial Calibration

Internal Standards	R.T.	QIon	Response	Conc	Units	Dev(Min)
1) 1,4-Dichlorobenzene-d4	6.77	152	94535	20.00	ng	0.00
21) Naphthalene-d8	8.06	136	388783	20.00	ng	0.00
38) Acenaphthene-d10	9.82	164	176718	20.00	ng	0.00
63) Phenanthrene-d10	11.32	188	290711	20.00	ng	0.00
75) Chrysene-d12	14.27	240	180967	20.00	ng	-0.05
86) Perylene-d12	16.11	264	160551	20.00	ng	-0.10
<b>System Monitoring Compounds</b>						
5) 2-Fluorophenol	5.42	112	775228	128.74	ng	0.02
7) Phenol-d6	6.43	99	844736	118.31	ng	0.00
23) Nitrobenzene-d5	7.35	82	559562	92.66	ng	0.00
41) 2,4,6-Tribromophenol	10.62	330	216131	134.20	ng	0.00
44) 2-Fluorobiphenyl	9.14	172	1161558	101.41	ng	0.00
78) Terphenyl-d14	13.00	244	871665	105.26	ng	-0.02

Target Compounds Qvalue

---

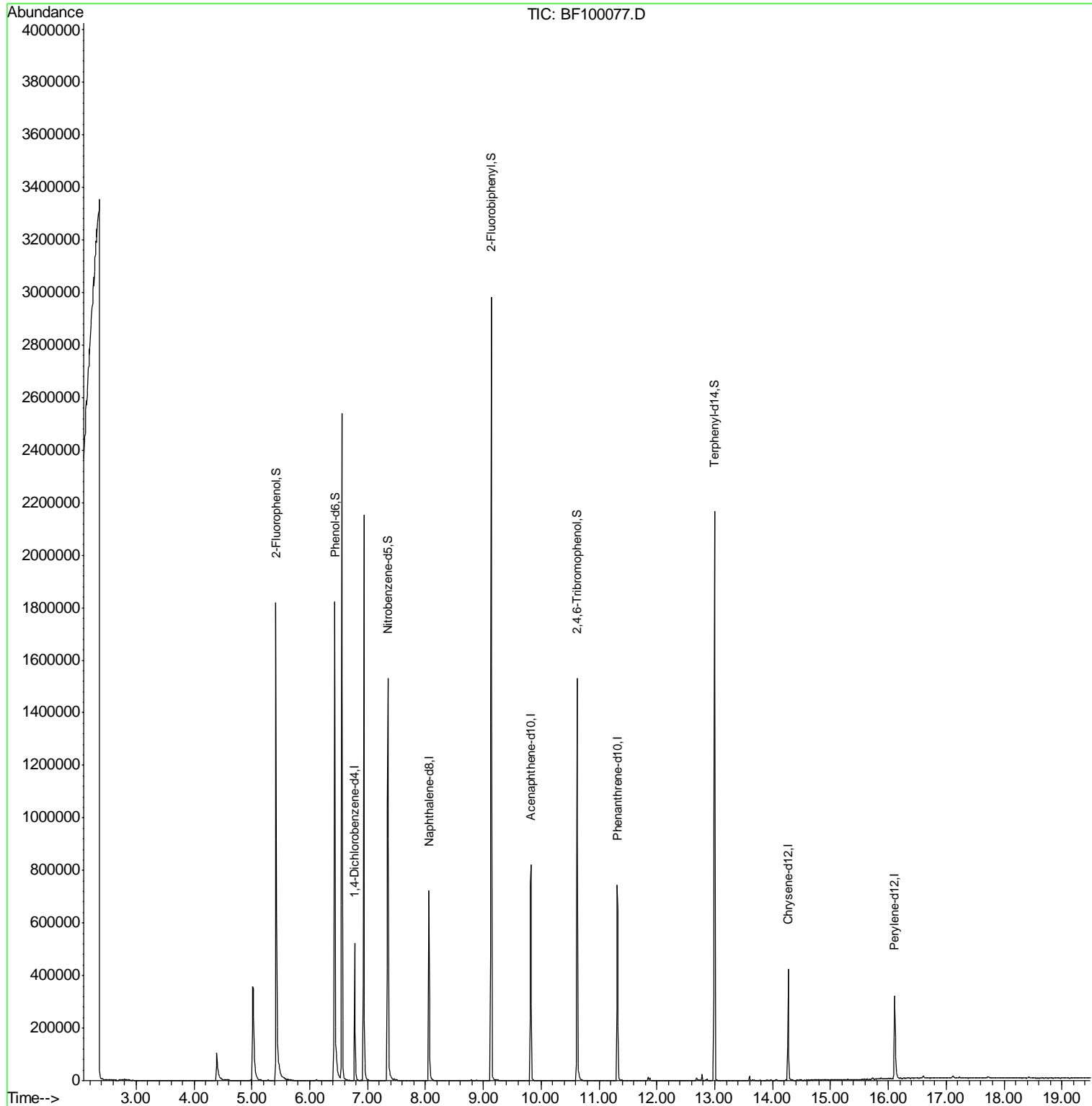
(#) = qualifier out of range (m) = manual integration (+) = signals summed

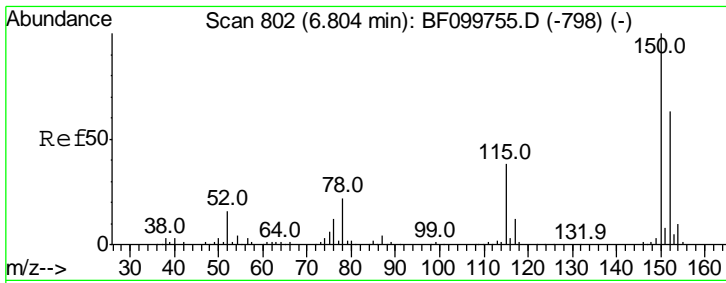
Data Path : \\74.0.250.170\SVOASRV\HPCHEM1\BNA F\DATA\BF110117\  
 Data File : BF100077.D  
 Acq On : 2 Nov 2017 6:32  
 Operator : SJ/JU  
 Sample : I6153-03  
 Misc :  
 ALS Vial : 33 Sample Multiplier: 1

**Instrument :**  
 BNA\_F  
**Client Sampled :**  
 WC-102517

**Manual Integrations**  
**APPROVED**  
 Sohil  
 11/2/2017 4:30:24 PM

Quant Time: Nov 02 16:25:04 2017  
 Quant Method : Z:\HPCHEM1\BNA F\METHODS\8270-BF102317.M  
 Quant Title : ASP BNA STANDARDS FOR 5 POINT CALIBRATION  
 QLast Update : Thu Nov 02 14:34:05 2017  
 Response via : Initial Calibration



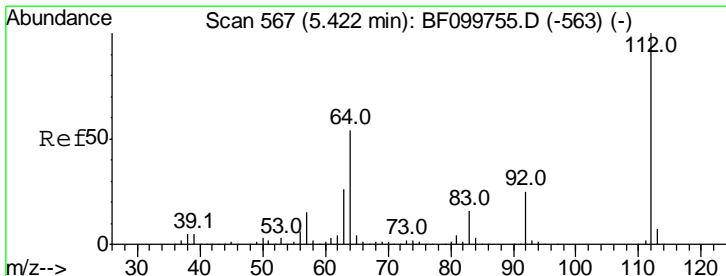
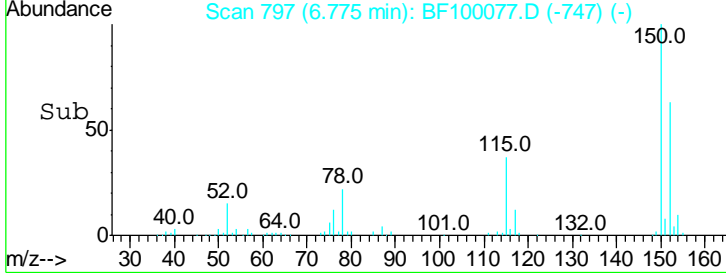
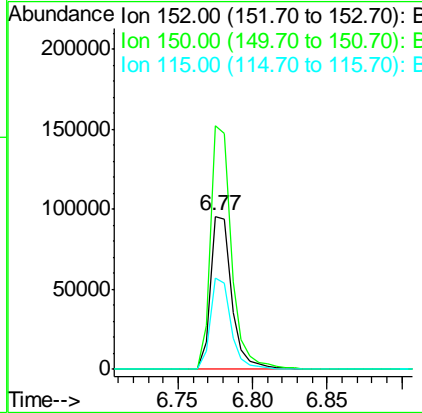
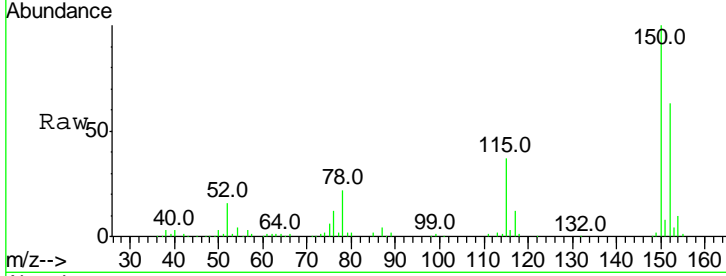


#1  
 1,4-Dichlorobenzene-d4  
 Concen: 20.000 ng  
 RT: 6.77 min Scan# 797  
 Delta R.T. -0.01 min  
 Lab File: BF100077.D  
 Acq: 2 Nov 2017 6:32

**Instrument :**  
 BNA\_F  
**ClientSampled :**  
 WC-102517

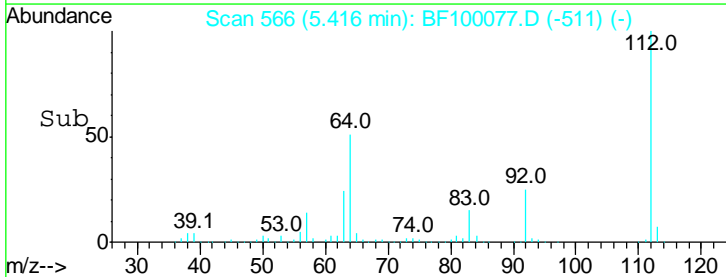
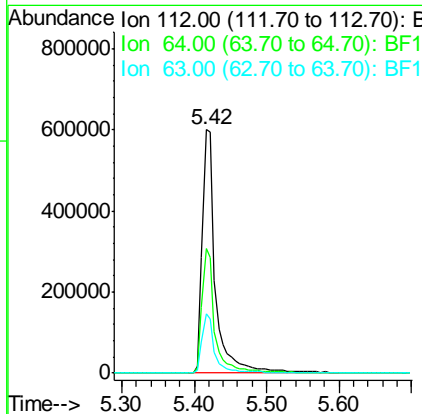
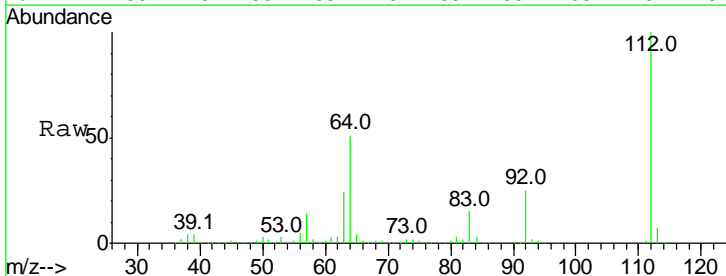
Tgt Ion	Resp	Lower	Upper
152	94535		
152	100		
150	159.3	124.6	186.8
115	59.3	50.1	75.1

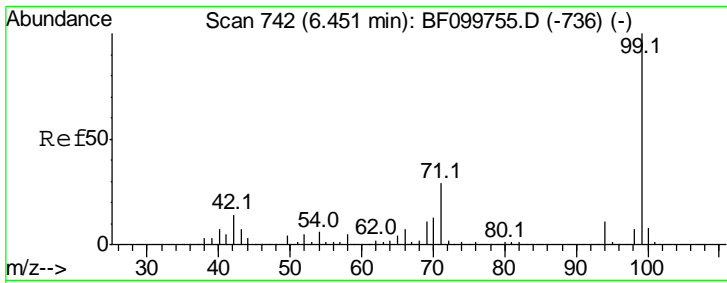
**Manual Integrations**  
**APPROVED**  
 Sohil  
 11/2/2017 4:30:24 PM



#5  
 2-Fluorophenol  
 Concen: 128.744 ng  
 RT: 5.42 min Scan# 566  
 Delta R.T. 0.02 min  
 Lab File: BF100077.D  
 Acq: 2 Nov 2017 6:32

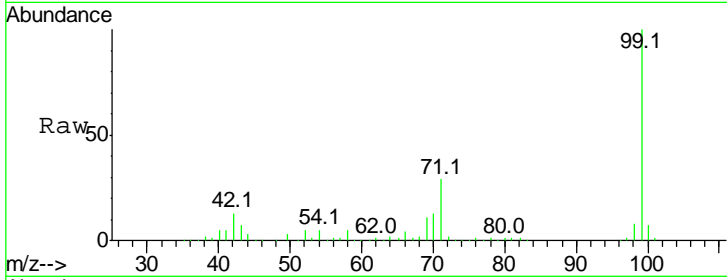
Tgt Ion	Resp	Lower	Upper
112	775228		
112	100		
64	51.1	47.9	71.9
63	24.3	23.7	35.5





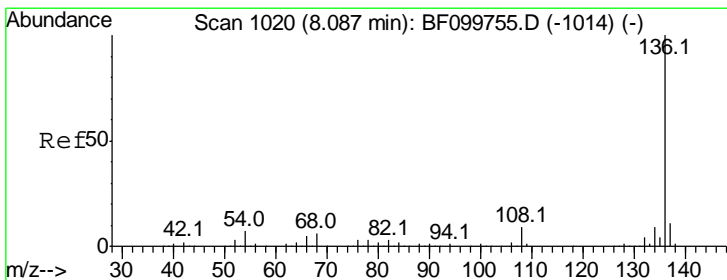
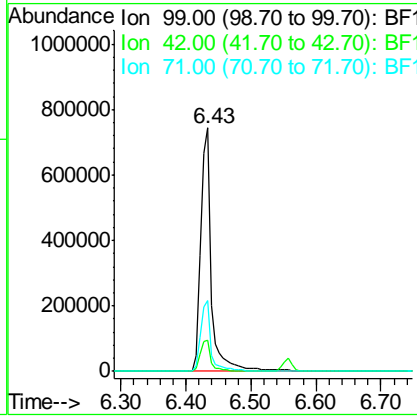
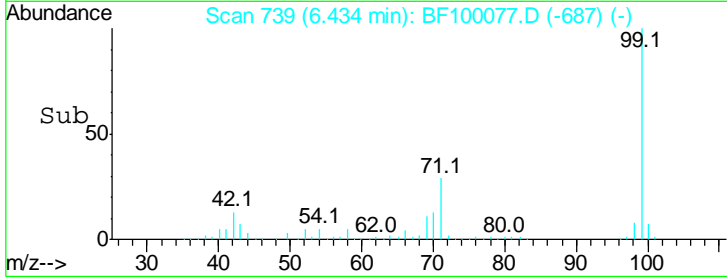
#7  
 Phenol-d6  
 Concen: 118.314 ng  
 RT: 6.43 min Scan# 739  
 Delta R.T. 0.01 min  
 Lab File: BF100077.D  
 Acq: 2 Nov 2017 6:32

**Instrument :**  
 BNA\_F  
**ClientSampled :**  
 WC-102517

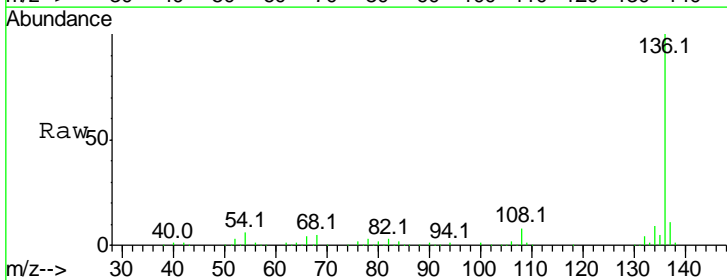


Tgt Ion: 99 Resp: 844736  
 Ion Ratio Lower Upper  
 99 100  
 42 13.0 14.5 21.7#  
 71 28.9 25.4 38.0

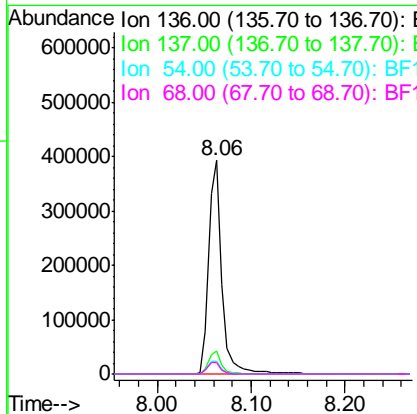
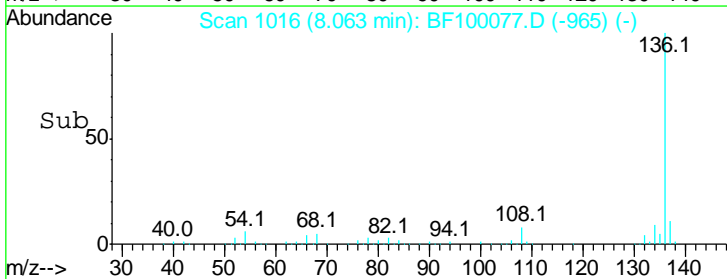
**Manual Integrations**  
**APPROVED**  
 Sohil  
 11/2/2017 4:30:24 PM

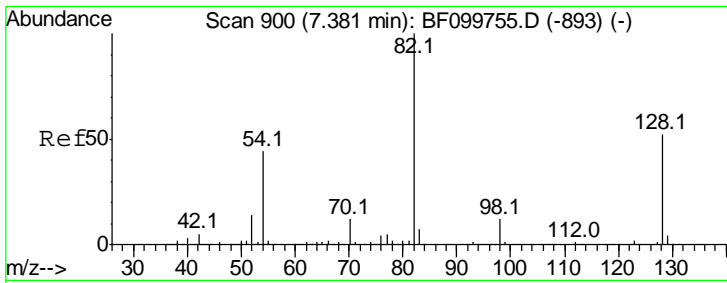


#21  
 Naphthalene-d8  
 Concen: 20.000 ng  
 RT: 8.06 min Scan# 1016  
 Delta R.T. -0.00 min  
 Lab File: BF100077.D  
 Acq: 2 Nov 2017 6:32



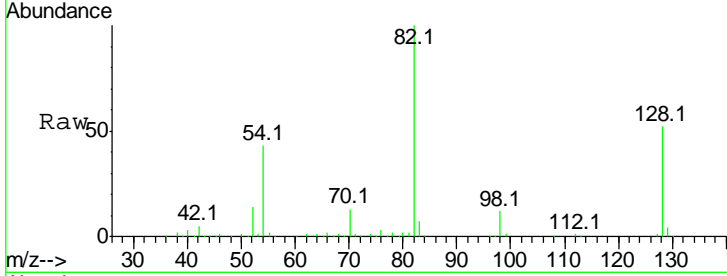
Tgt Ion: 136 Resp: 388783  
 Ion Ratio Lower Upper  
 136 100  
 137 10.8 8.9 13.3  
 54 6.1 6.6 9.8#  
 68 5.5 5.0 7.4





#23  
 Nitrobenzene-d5  
 Concen: 92.661 ng  
 RT: 7.35 min Scan# 895  
 Delta R.T. -0.01 min  
 Lab File: BF100077.D  
 Acq: 2 Nov 2017 6:32

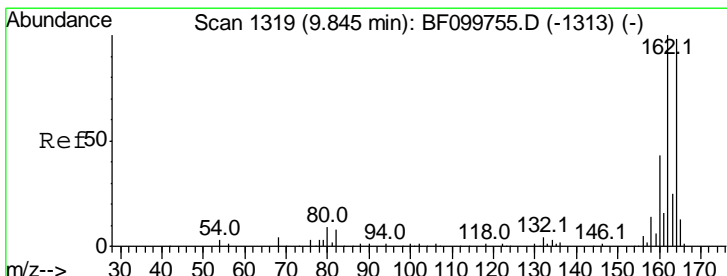
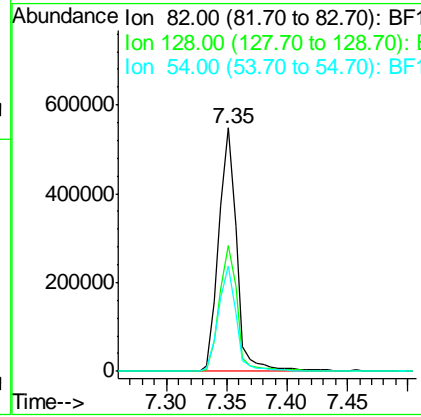
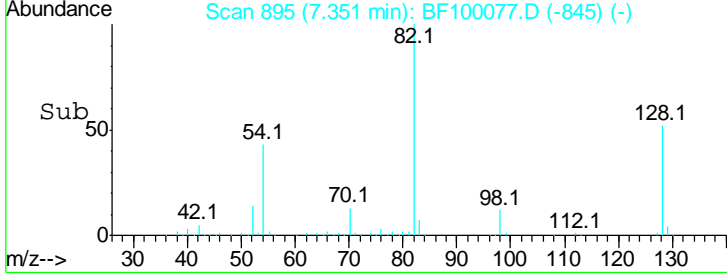
**Instrument :**  
 BNA\_F  
**ClientSampled :**  
 WC-102517



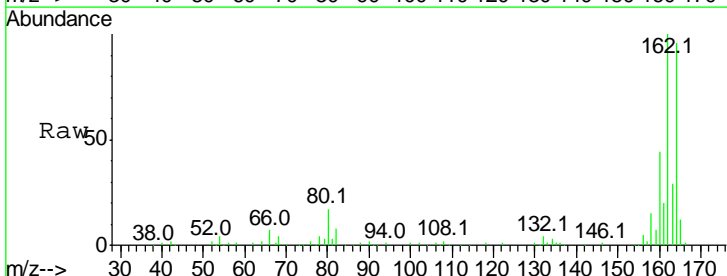
Tgt Ion: 82 Resp: 559562

Ion	Ratio	Lower	Upper
82	100		
128	51.6	36.1	54.1
54	43.4	41.4	62.2

**Manual Integrations**  
**APPROVED**  
 Sohil  
 11/2/2017 4:30:24 PM

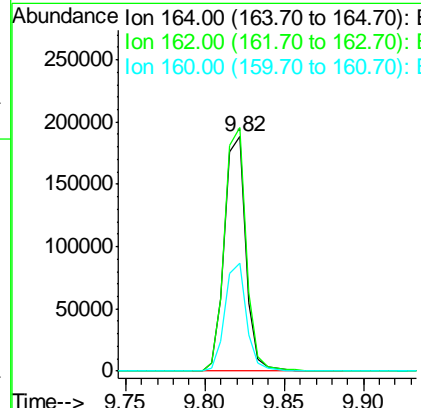
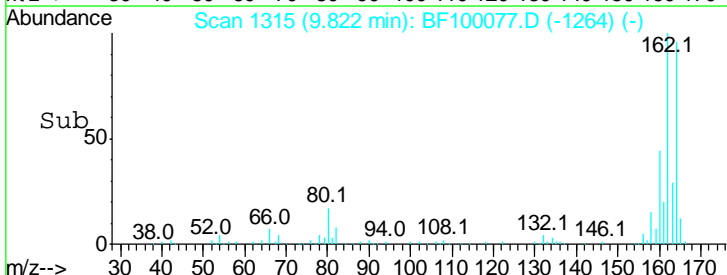


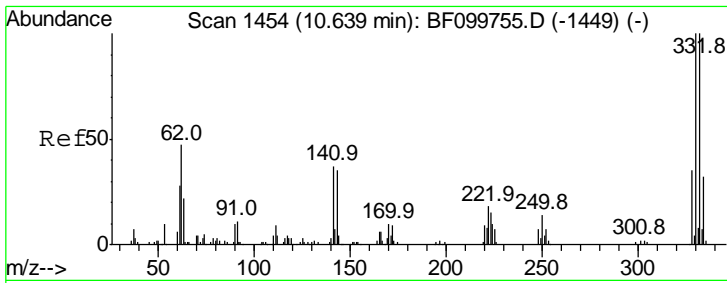
#38  
 Acenaphthene-d10  
 Concen: 20.000 ng  
 RT: 9.82 min Scan# 1315  
 Delta R.T. -0.00 min  
 Lab File: BF100077.D  
 Acq: 2 Nov 2017 6:32



Tgt Ion: 164 Resp: 176718

Ion	Ratio	Lower	Upper
164	100		
162	104.0	86.1	129.1
160	45.9	38.3	57.5



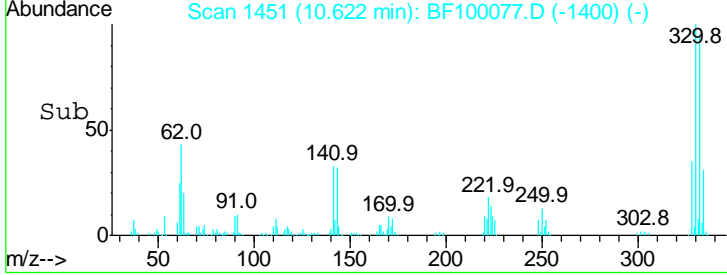
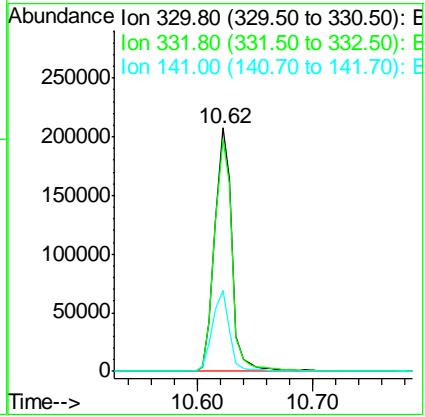
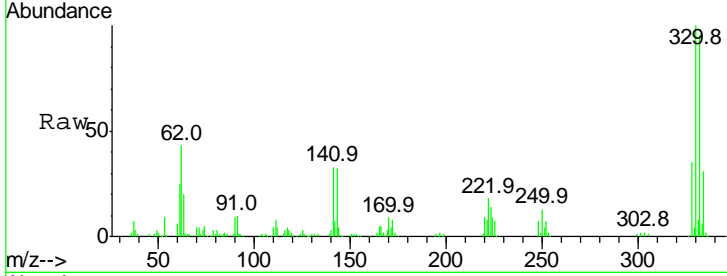


#41  
 2,4,6-Tribromophenol  
 Concen: 134.204 ng  
 RT: 10.62 min Scan# 1451  
 Delta R.T. -0.00 min  
 Lab File: BF100077.D  
 Acq: 2 Nov 2017 6:32

Instrument :  
 BNA\_F  
 ClientSampled :  
 WC-102517

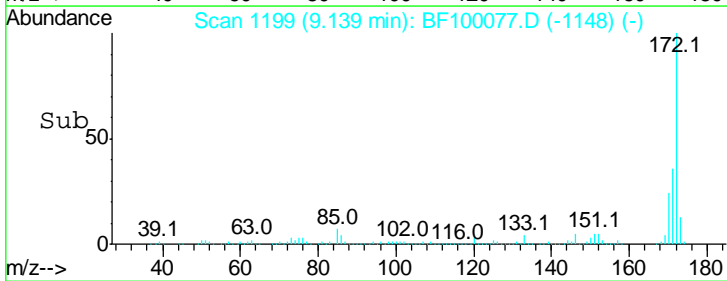
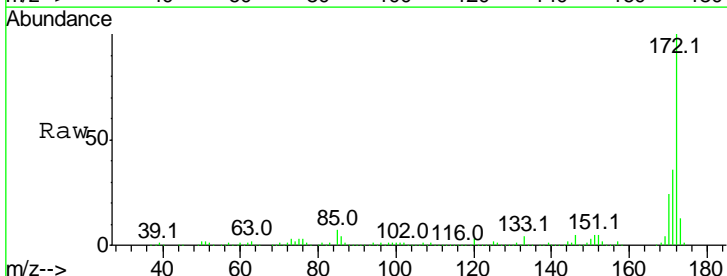
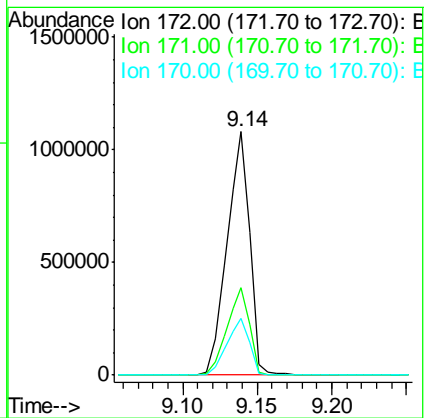
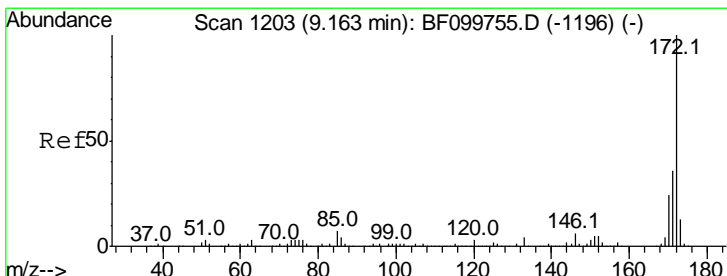
Tgt Ion	Resp	Lower	Upper
330	100		
332	97.7	77.0	115.6
141	33.1	29.9	44.9

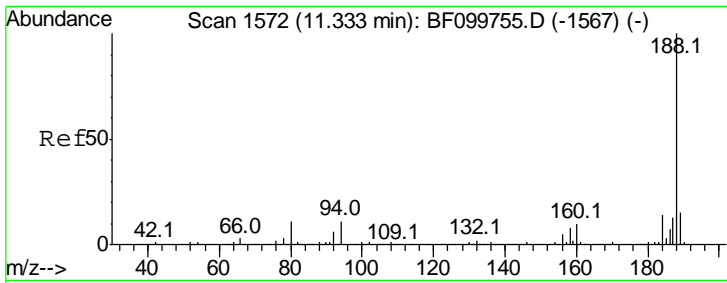
Manual Integrations  
**APPROVED**  
 Sohil  
 11/2/2017 4:30:24 PM



#44  
 2-Fluorobiphenyl  
 Concen: 101.410 ng  
 RT: 9.14 min Scan# 1199  
 Delta R.T. -0.00 min  
 Lab File: BF100077.D  
 Acq: 2 Nov 2017 6:32

Tgt Ion	Resp	Lower	Upper
172	100		
171	36.0	29.7	44.5
170	23.6	19.6	29.4





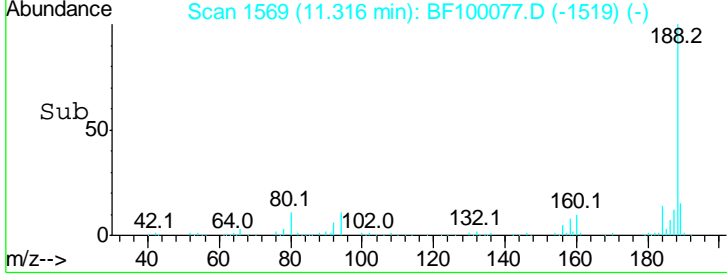
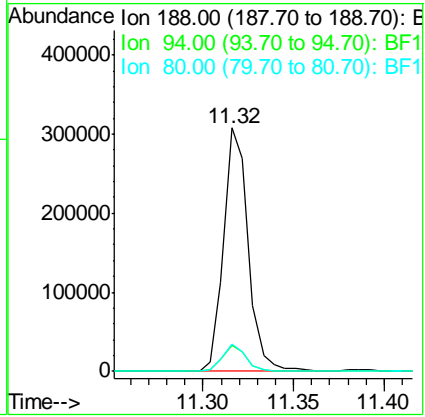
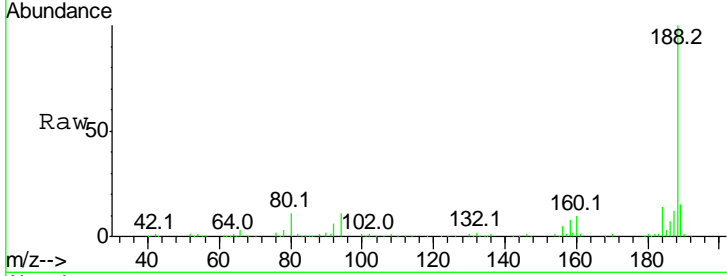
#63  
 Phenanthrene-d10  
 Concen: 20.000 ng  
 RT: 11.32 min Scan# 1569  
 Delta R.T. -0.01 min  
 Lab File: BF100077.D  
 Acq: 2 Nov 2017 6:32

**Instrument :**  
 BNA\_F  
**ClientSampled :**  
 WC-102517

Tgt Ion	Resp	Lower	Upper
188	100		
94	10.6	8.5	12.7
80	11.3	9.2	13.8

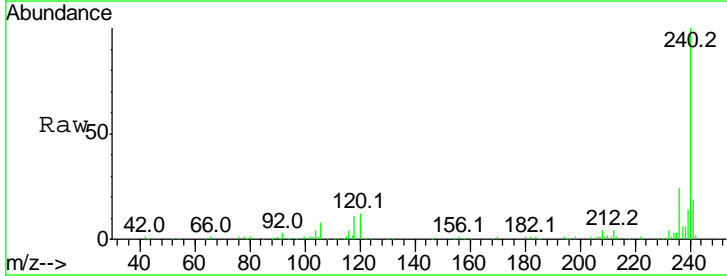
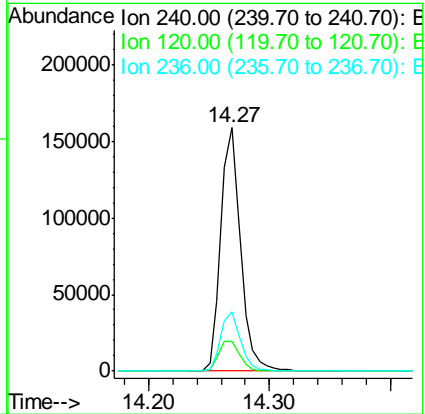
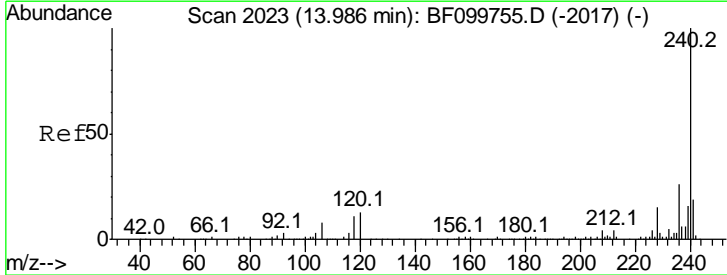
**Manual Integrations**  
**APPROVED**

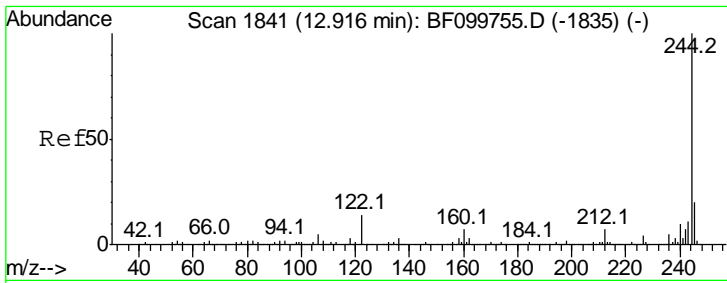
Sohil  
 11/2/2017 4:30:24 PM



#75  
 Chrysene-d12  
 Concen: 20.000 ng  
 RT: 14.27 min Scan# 2071  
 Delta R.T. -0.05 min  
 Lab File: BF100077.D  
 Acq: 2 Nov 2017 6:32

Tgt Ion	Resp	Lower	Upper
240	100		
120	12.4	9.5	14.3
236	24.2	20.7	31.1





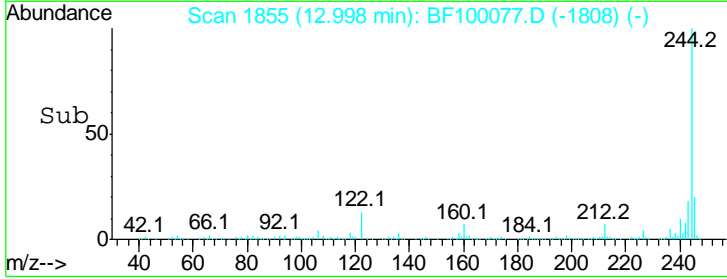
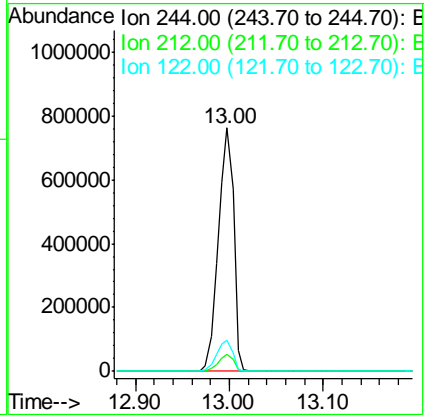
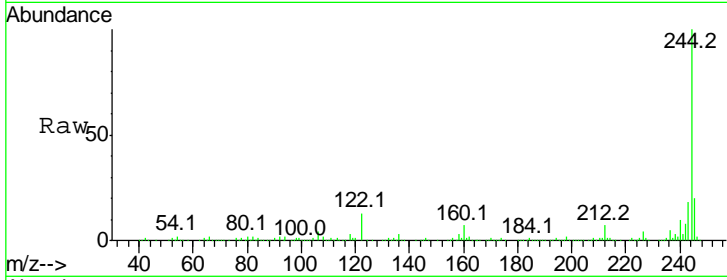
#78  
 Terphenyl-d14  
 Concen: 105.263 ng  
 RT: 13.00 min Scan# 1855  
 Delta R.T. -0.02 min  
 Lab File: BF100077.D  
 Acq: 2 Nov 2017 6:32

**Instrument :**  
 BNA\_F  
**Client Sampled :**  
 WC-102517

Tgt Ion: 244 Resp: 871665

Ion	Ratio	Lower	Upper
244	100		
212	6.8	5.4	8.0
122	13.0	11.0	16.4

**Manual Integrations**  
**APPROVED**  
 Sohil  
 11/2/2017 4:30:24 PM



#86  
 Perylene-d12  
 Concen: 20.000 ng  
 RT: 16.11 min Scan# 2384  
 Delta R.T. -0.10 min  
 Lab File: BF100077.D  
 Acq: 2 Nov 2017 6:32

Tgt Ion: 264 Resp: 160551

Ion	Ratio	Lower	Upper
264	100		
260	23.1	19.2	28.8
265	20.5	17.5	26.3

