

Data Path : Z:\HPCHEM1\BNA_F\DATA\BF110216\
 Data File : BF090994.D
 Acq On : 2 Nov 2016 21:51
 Operator : UM/SJ
 Sample : H5509-15
 Misc :
 ALS Vial : 21 Sample Multiplier: 1

Instrument :
 BNA_F
ClientSampleId :
 S-1-0.5-1.0

Manual Integrations
APPROVED
 Umangi
 11/3/2016 7:13:28 PM

Quant Time: Nov 03 01:51:29 2016
 Quant Method : Z:\HPCHEM1\BNA_F\METHODS\8270-BF102616.M
 Quant Title : ASP BNA STANDARDS FOR 5 POINT CALIBRATION
 QLast Update : Tue Nov 01 11:53:50 2016
 Response via : Initial Calibration

Internal Standards	R.T.	QIon	Response	Conc	Units	Dev(Min)	
1) 1,4-Dichlorobenzene-d4	6.72	152	180575	20.00	ng	-0.03	
21) Naphthalene-d8	8.01	136	769719	20.00	ng	-0.03	
38) Acenaphthene-d10	9.76	164	349954	20.00	ng	-0.03	
63) Phenanthrene-d10	11.24	188	506426	20.00	ng	-0.02	
75) Chrysene-d12	13.87	240	308028	20.00	ng	-0.03	
86) Perylene-d12	15.28	264	285696	20.00	ng	-0.02	
System Monitoring Compounds							
5) 2-Fluorophenol	5.32	112	1491571	144.42	ng	-0.01	
7) Phenol-d6	6.37	99	2243571	161.02	ng	-0.02	
23) Nitrobenzene-d5	7.29	82	1434006	121.96	ng	-0.03	
41) 2,4,6-Tribromophenol	10.56	330	491477	136.66	ng	-0.02	
44) 2-Fluorobiphenyl	9.09	172	2138652	107.31	ng	-0.02	
78) Terphenyl-d14	12.83	244	1467985	120.07	ng	-0.02	
Target Compounds							
49) Dimethylphthalate	9.49	163	804498	34.41	ng		Qvalue # 97
70) Phenanthrene	11.26	178	271925	10.54	ng		96
71) Anthracene	11.32	178	69163	2.55	ng		99
74) Fluoranthene	12.45	202	248140	8.79	ng		94
77) Pyrene	12.68	202	182954	9.39	ng		97
80) Benzo(a)anthracene	13.87	228	82702m	5.06	ng		
82) Chrysene	13.91	228	65901m	3.99	ng		
87) Benzo(b)fluoranthene	14.89	252	84674m	4.41	ng		
89) Benzo(a)pyrene	15.21	252	52164	3.16	ng		95

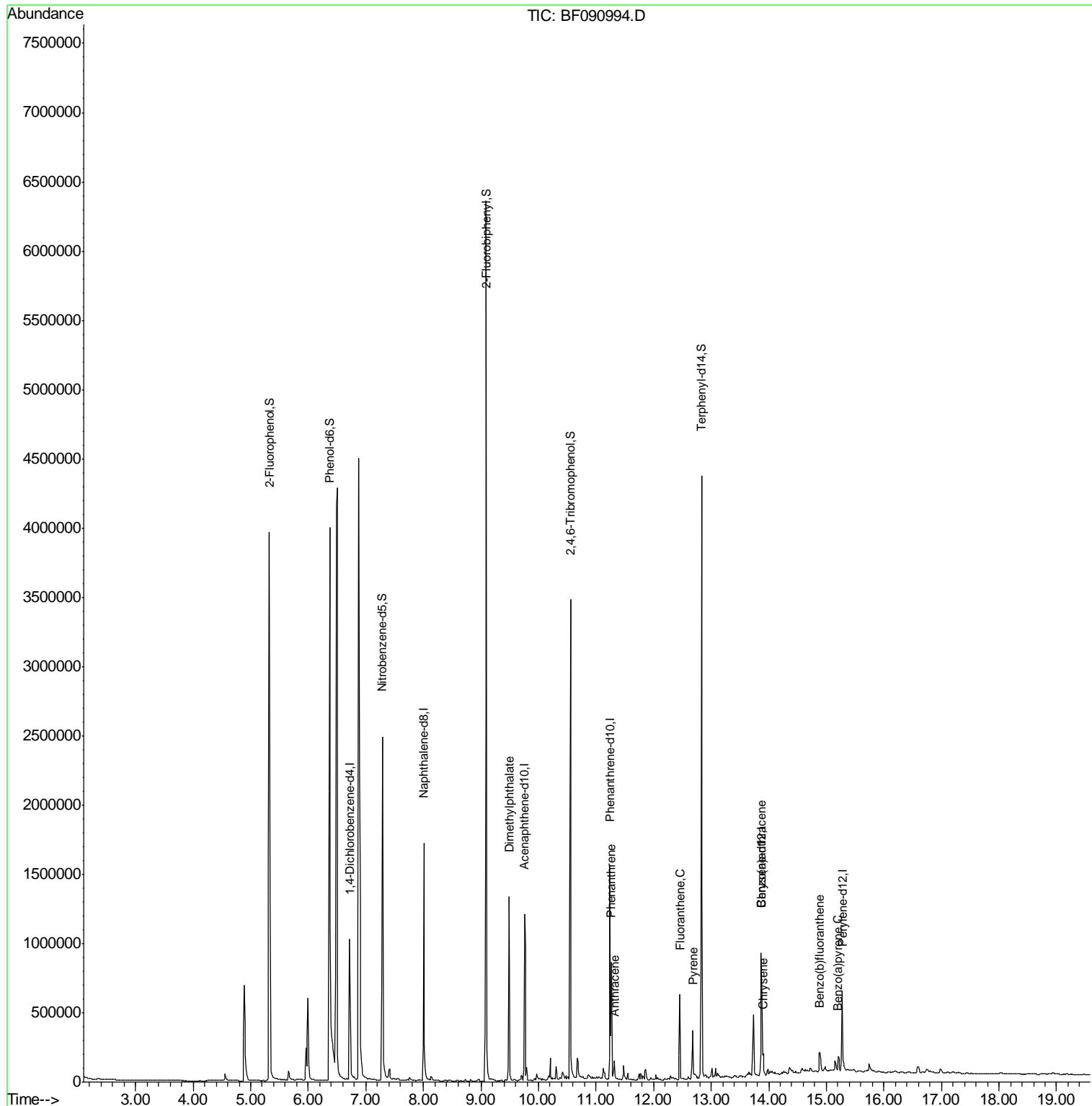
(#) = qualifier out of range (m) = manual integration (+) = signals summed

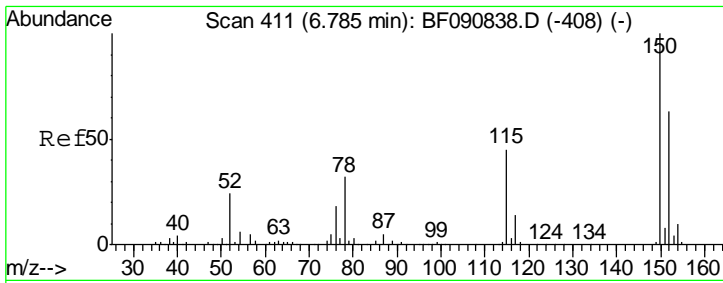
Data Path : Z:\HPCHEM1\BNA_F\DATA\BF110216\
 Data File : BF090994.D
 Acq On : 2 Nov 2016 21:51
 Operator : UM/SJ
 Sample : H5509-15
 Misc :
 ALS Vial : 21 Sample Multiplier: 1

Instrument :
 BNA_F
 ClientSampled :
 S-1-0.5-1.0

Manual Integrations
 APPROVED
 Umangi
 11/3/2016 7:13:28 PM

Quant Time: Nov 03 01:51:29 2016
 Quant Method : Z:\HPCHEM1\BNA_F\METHODS\8270-BF102616.M
 Quant Title : ASP BNA STANDARDS FOR 5 POINT CALIBRATION
 QLast Update : Tue Nov 01 11:53:50 2016
 Response via : Initial Calibration



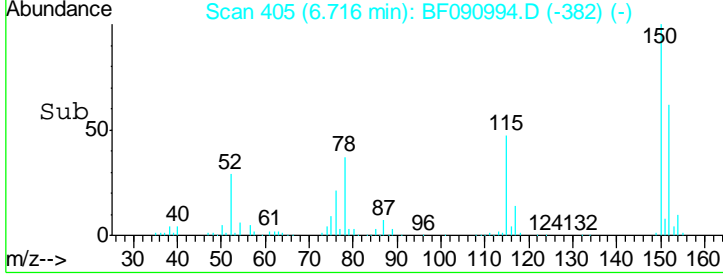
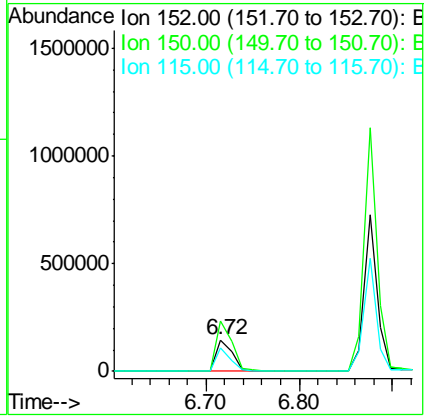
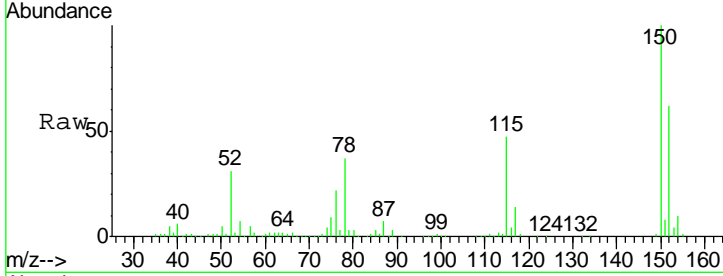


#1
 1,4-Dichlorobenzene-d4
 Concen: 20.00 ng
 RT: 6.72 min Scan# 405
 Delta R.T. -0.03 min
 Lab File: BF090994.D
 Acq: 2 Nov 2016 21:51

Instrument :
 BNA_F
ClientSampled :
 S-1-0.5-1.0

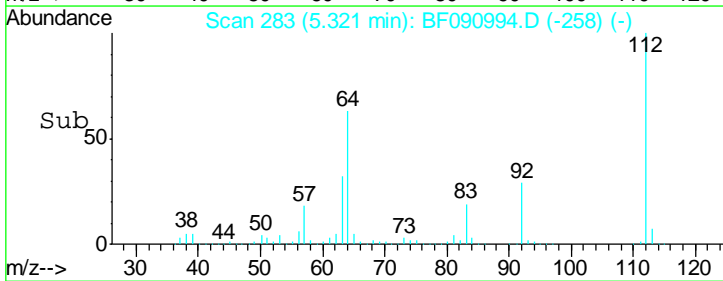
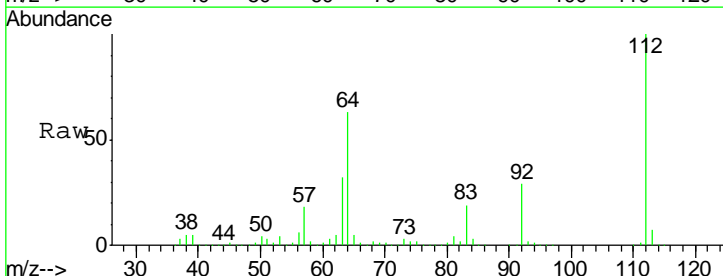
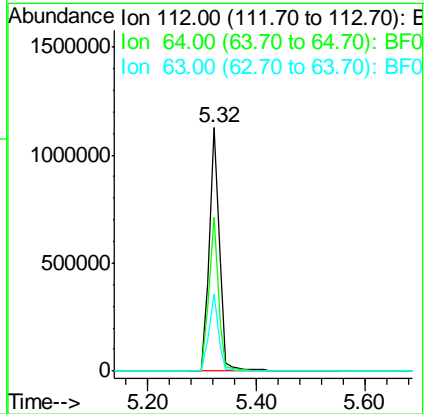
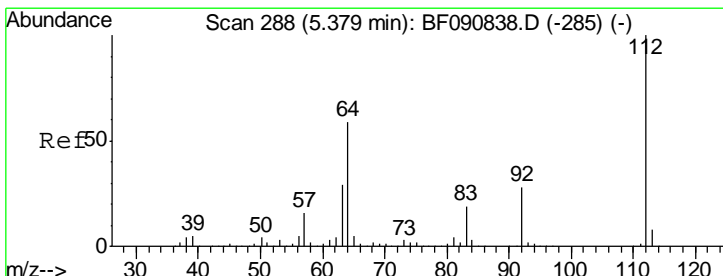
Tgt Ion	Resp	Lower	Upper
152	180575		
152	100		
150	160.5	124.7	187.1
115	75.8	39.0	58.4#

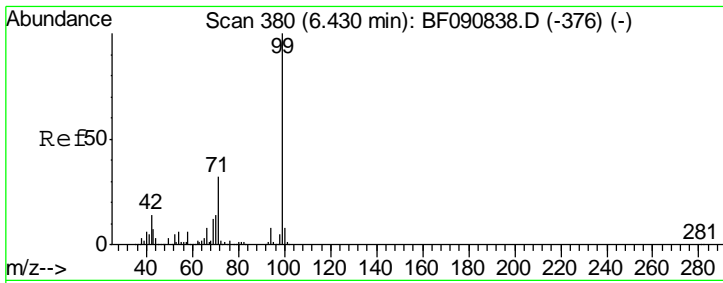
Manual Integrations
APPROVED
 Umangi
 11/3/2016 7:13:28 PM



#5
 2-Fluorophenol
 Concen: 144.42 ng
 RT: 5.32 min Scan# 283
 Delta R.T. -0.01 min
 Lab File: BF090994.D
 Acq: 2 Nov 2016 21:51

Tgt Ion	Resp	Lower	Upper
112	1491571		
112	100		
64	63.0	39.7	59.5#
63	31.8	17.4	26.0#





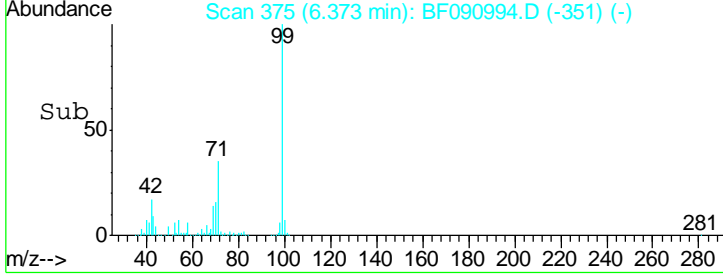
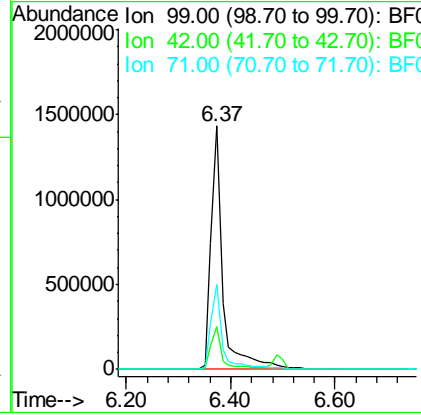
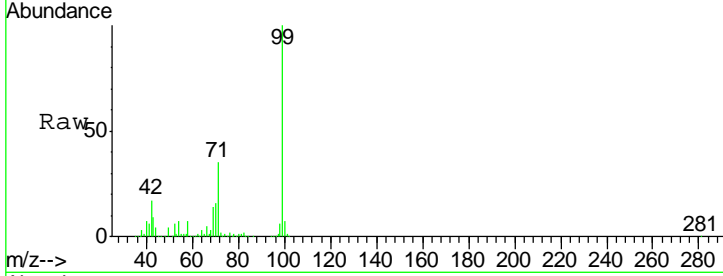
#7
 Phenol-d6
 Concen: 161.02 ng
 RT: 6.37 min Scan# 375
 Delta R.T. -0.02 min
 Lab File: BF090994.D
 Acq: 2 Nov 2016 21:51

Instrument :
 BNA_F
ClientSampled :
 S-1-0.5-1.0

Tgt Ion	Resp	Lower	Upper
99	100		
42	17.3	13.7	20.5
71	34.7	14.2	21.2#

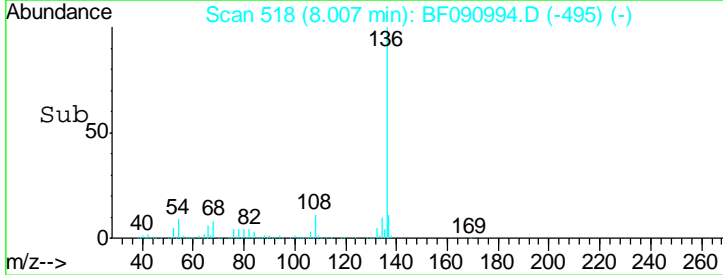
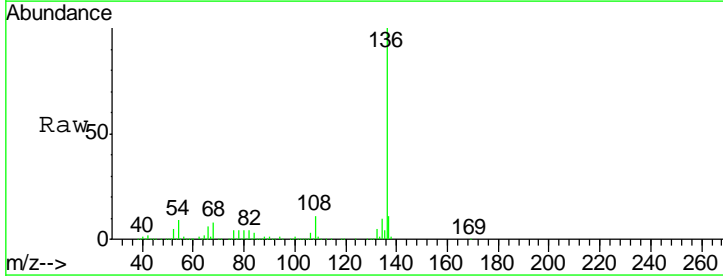
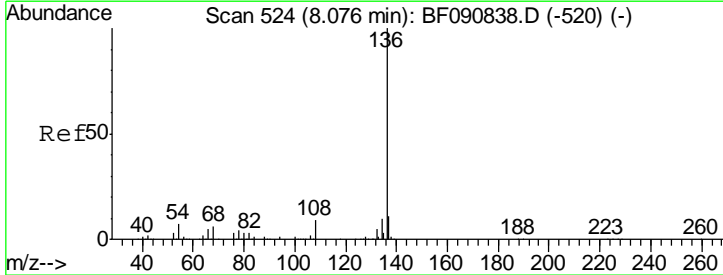
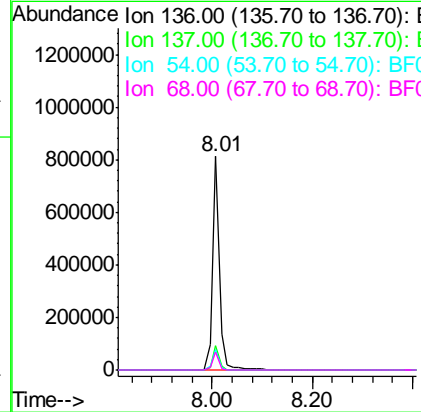
Manual Integrations
APPROVED

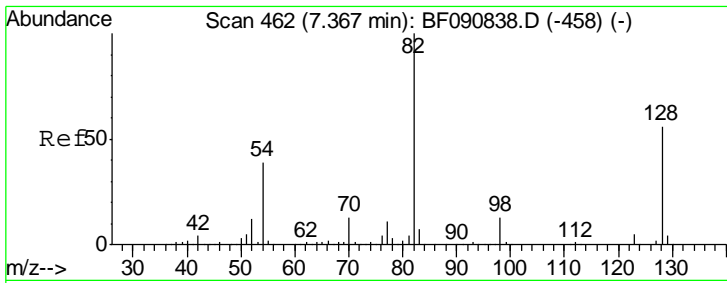
Umangi
 11/3/2016 7:13:28 PM



#21
 Naphthalene-d8
 Concen: 20.00 ng
 RT: 8.01 min Scan# 518
 Delta R.T. -0.03 min
 Lab File: BF090994.D
 Acq: 2 Nov 2016 21:51

Tgt Ion	Resp	Lower	Upper
136	100		
137	11.3	9.0	13.6
54	9.4	8.2	12.2
68	8.2	5.8	8.6





#23
 Nitrobenzene-d5
 Concen: 121.96 ng
 RT: 7.29 min Scan# 455
 Delta R.T. -0.03 min
 Lab File: BF090994.D
 Acq: 2 Nov 2016 21:51

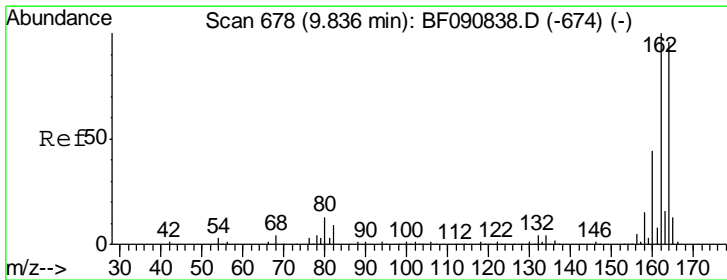
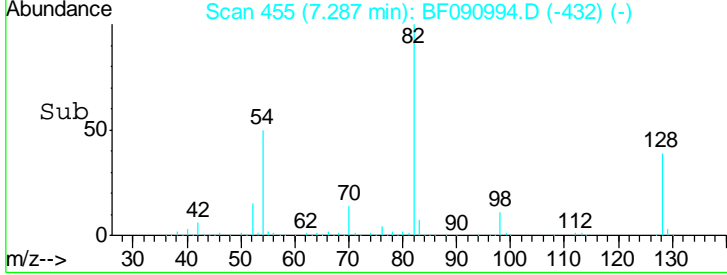
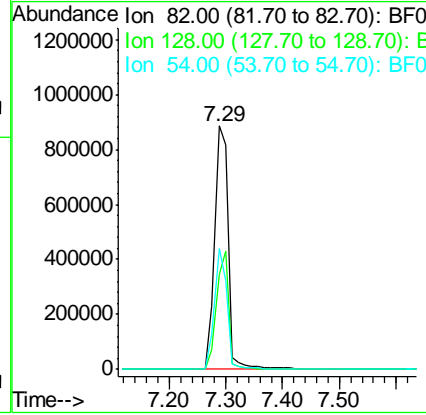
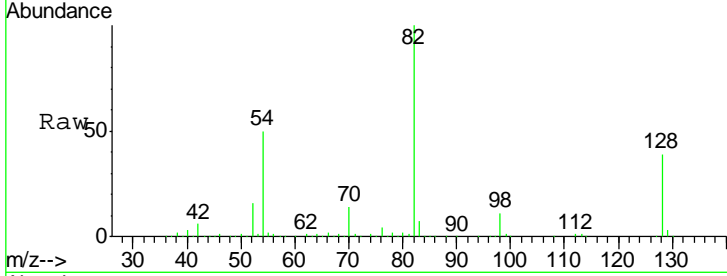
Instrument :
 BNA_F
ClientSampled :
 S-1-0.5-1.0

Tgt Ion: 82 Resp: 1434006

Ion	Ratio	Lower	Upper
82	100		
128	39.3	51.0	76.6#
54	49.6	47.5	71.3

Manual Integrations
APPROVED

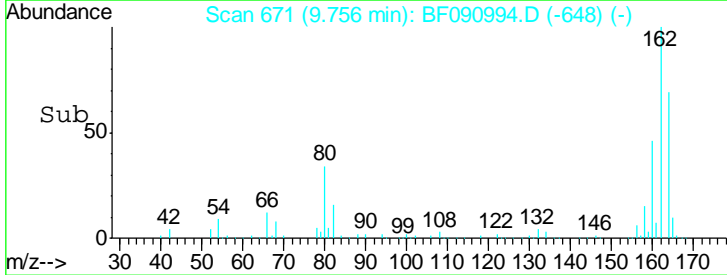
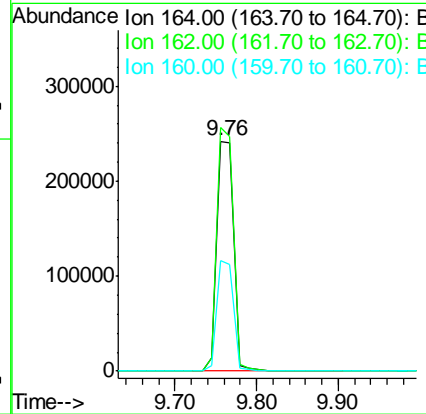
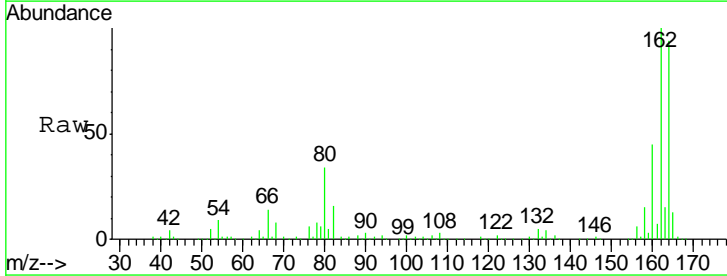
Umangi
 11/3/2016 7:13:28 PM

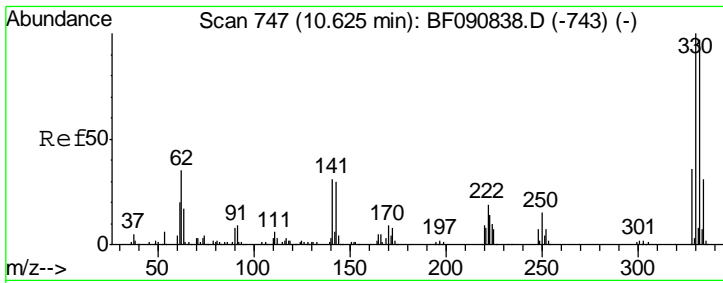


#38
 Acenaphthene-d10
 Concen: 20.00 ng
 RT: 9.76 min Scan# 671
 Delta R.T. -0.03 min
 Lab File: BF090994.D
 Acq: 2 Nov 2016 21:51

Tgt Ion: 164 Resp: 349954

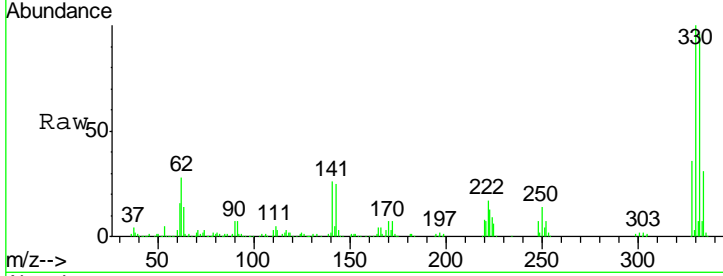
Ion	Ratio	Lower	Upper
164	100		
162	105.9	75.2	112.8
160	47.9	31.5	47.3#





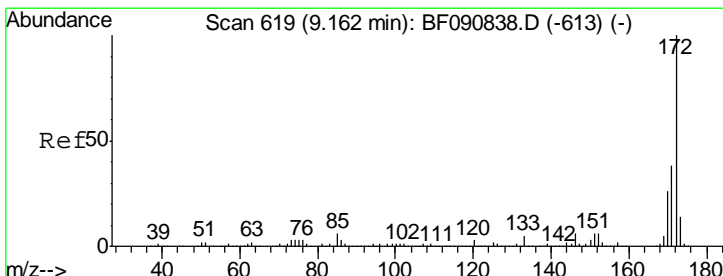
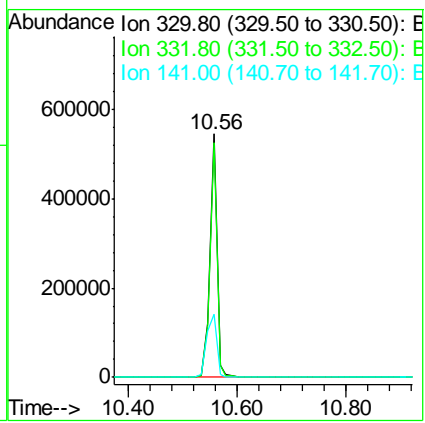
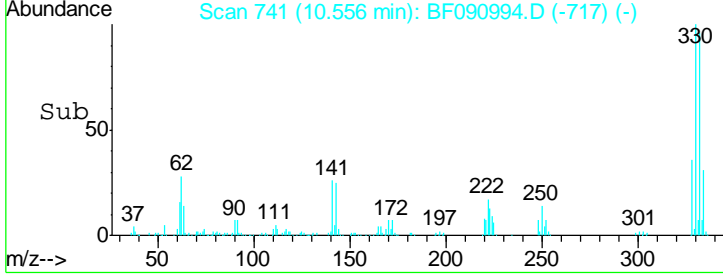
#41
 2,4,6-Tribromophenol
 Concen: 136.66 ng
 RT: 10.56 min Scan# 741
 Delta R.T. -0.02 min
 Lab File: BF090994.D
 Acq: 2 Nov 2016 21:51

Instrument :
 BNA_F
 ClientSampled :
 S-1-0.5-1.0

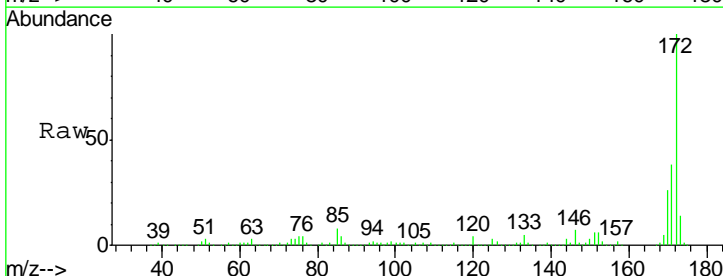


Tgt Ion	Resp	Lower	Upper
330	100		
332	96.1	76.6	114.8
141	37.2	29.7	44.5

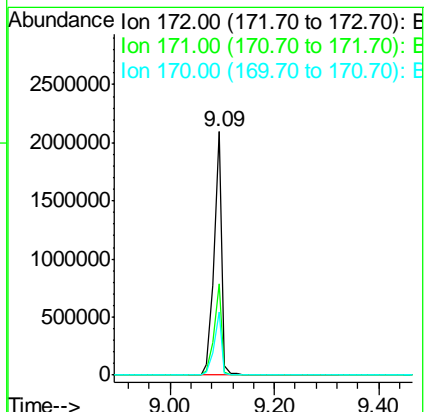
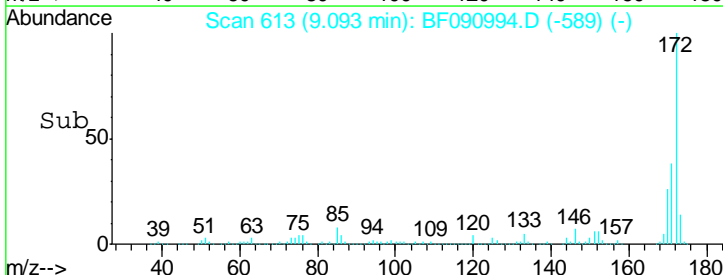
Manual Integrations
APPROVED
 Umangi
 11/3/2016 7:13:28 PM

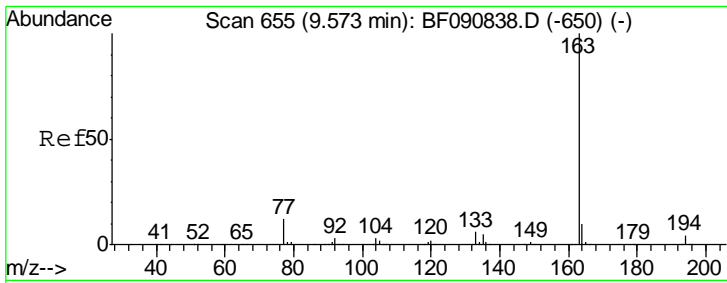


#44
 2-Fluorobiphenyl
 Concen: 107.31 ng
 RT: 9.09 min Scan# 613
 Delta R.T. -0.02 min
 Lab File: BF090994.D
 Acq: 2 Nov 2016 21:51



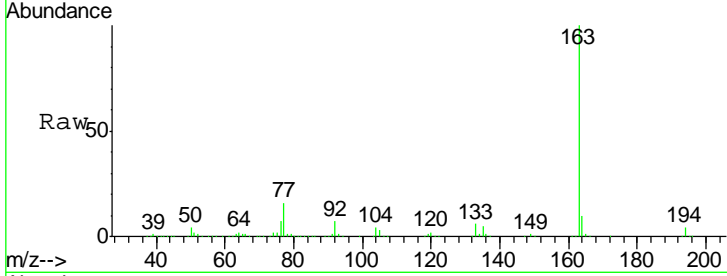
Tgt Ion	Resp	Lower	Upper
172	100		
171	37.7	26.1	39.1
170	25.9	17.4	26.2





#49
 Dimethylphthalate
 Concen: 34.41 ng
 RT: 9.49 min Scan# 648
 Delta R.T. -0.02 min
 Lab File: BF090994.D
 Acq: 2 Nov 2016 21:51

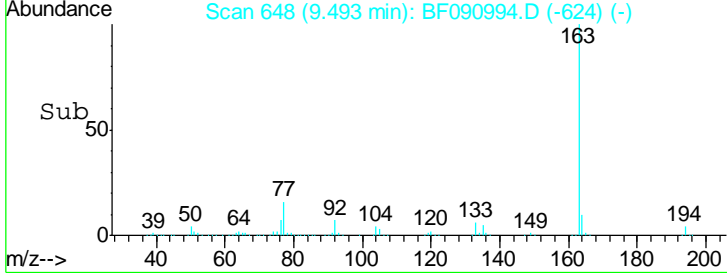
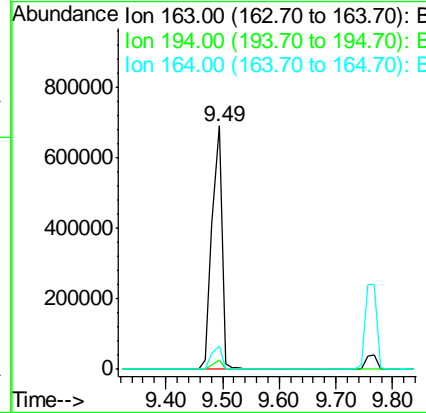
Instrument :
 BNA_F
 ClientSampled :
 S-1-0.5-1.0



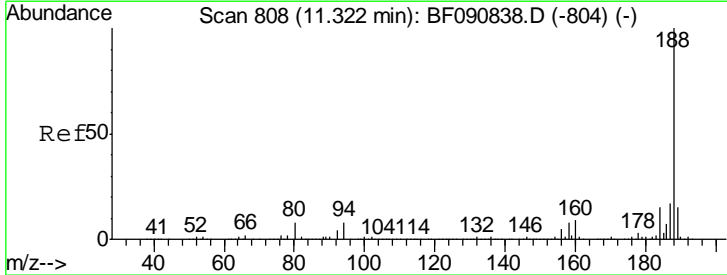
Tgt Ion	Resp	Lower	Upper
163	100		
194	3.6	4.4	6.6#
164	9.7	8.3	12.5

Manual Integrations
 APPROVED

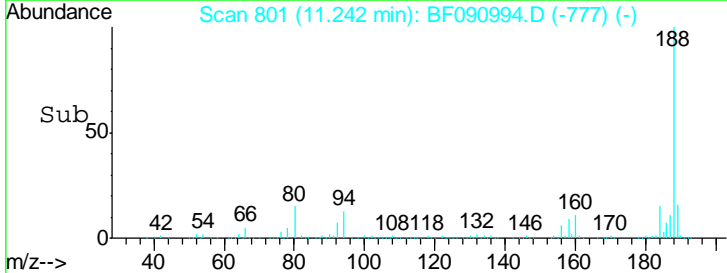
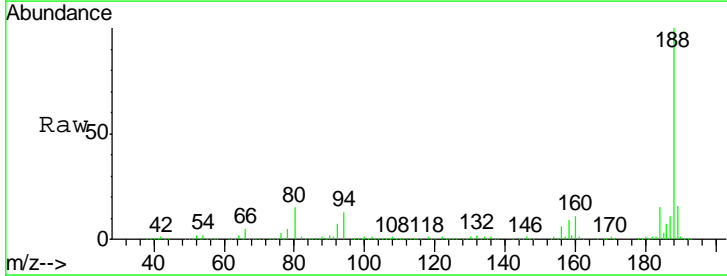
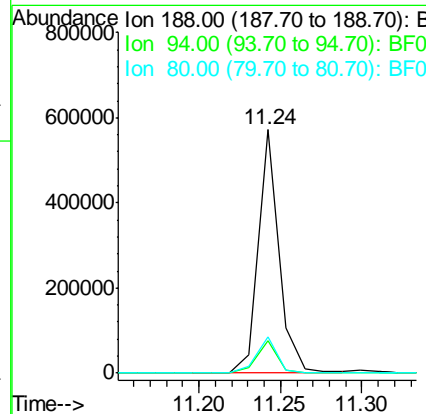
Umangi
 11/3/2016 7:13:28 PM

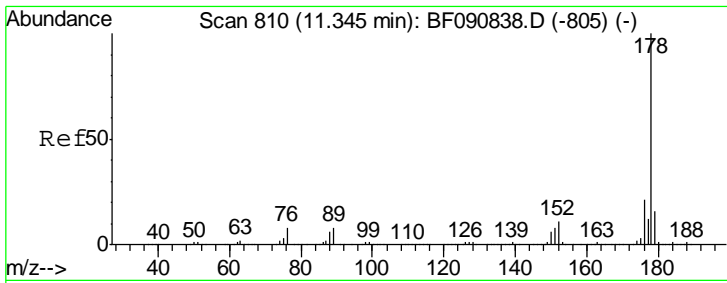


#63
 Phenanthrene-d10
 Concen: 20.00 ng
 RT: 11.24 min Scan# 801
 Delta R.T. -0.02 min
 Lab File: BF090994.D
 Acq: 2 Nov 2016 21:51



Tgt Ion	Resp	Lower	Upper
188	100		
94	13.3	11.1	16.7
80	15.0	11.0	16.4





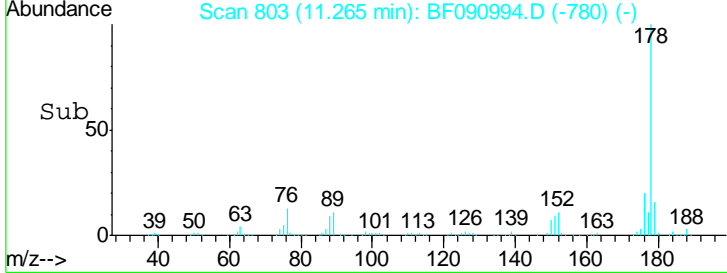
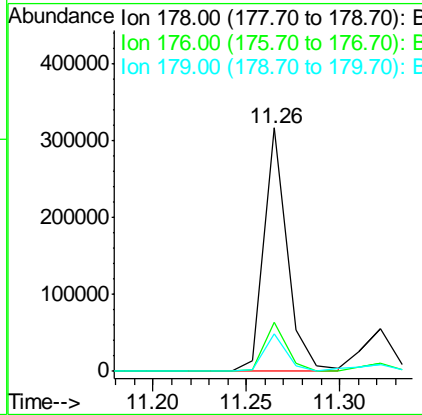
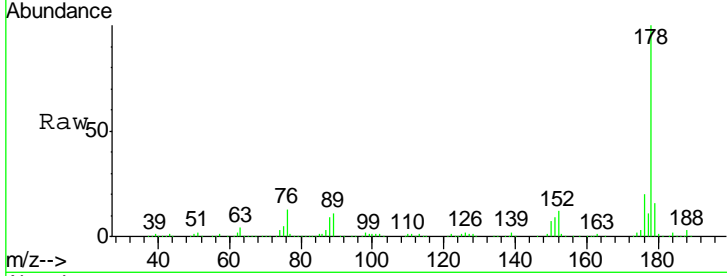
#70
 Phenanthrene
 Concen: 10.54 ng
 RT: 11.26 min Scan# 803
 Delta R.T. -0.03 min
 Lab File: BF090994.D
 Acq: 2 Nov 2016 21:51

Instrument :
 BNA_F
 ClientSampled :
 S-1-0.5-1.0

Tgt Ion	Resp	Lower	Upper
178	100		
176	20.3	13.8	20.8
179	15.5	12.2	18.2

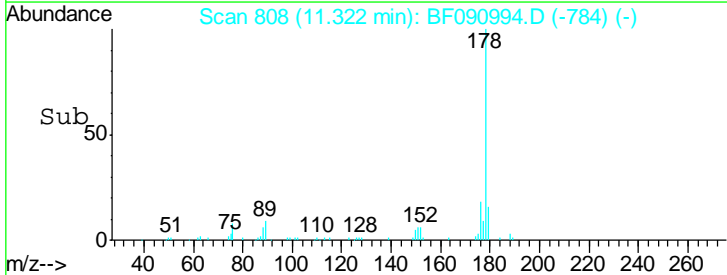
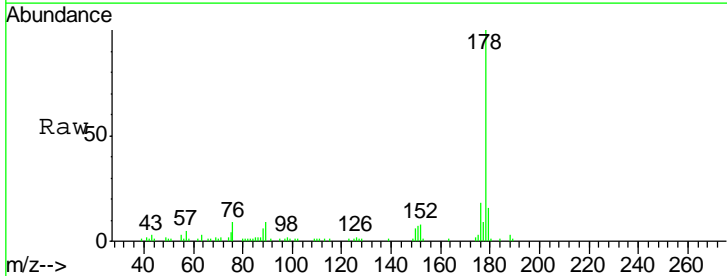
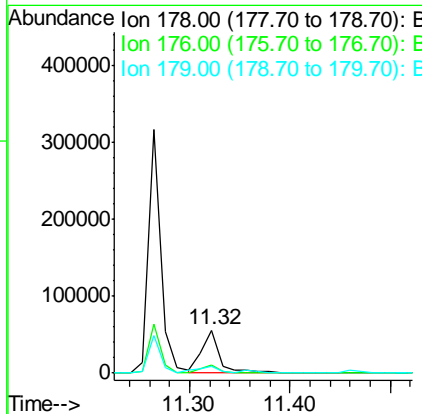
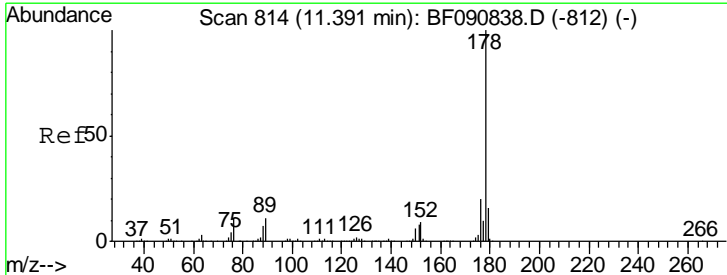
Manual Integrations
 APPROVED

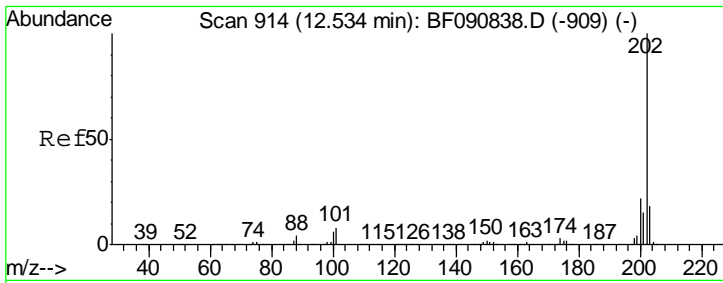
Umangi
 11/3/2016 7:13:28 PM



#71
 Anthracene
 Concen: 2.55 ng
 RT: 11.32 min Scan# 808
 Delta R.T. -0.02 min
 Lab File: BF090994.D
 Acq: 2 Nov 2016 21:51

Tgt Ion	Resp	Lower	Upper
178	100		
176	18.2	14.1	21.1
179	15.7	12.2	18.2





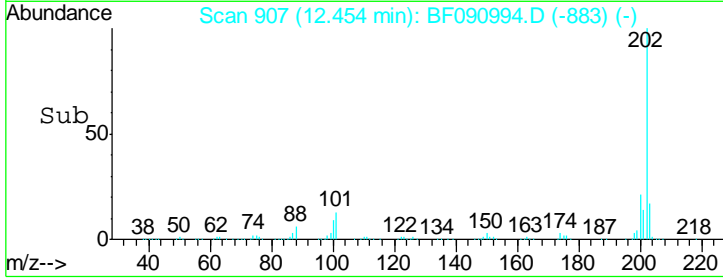
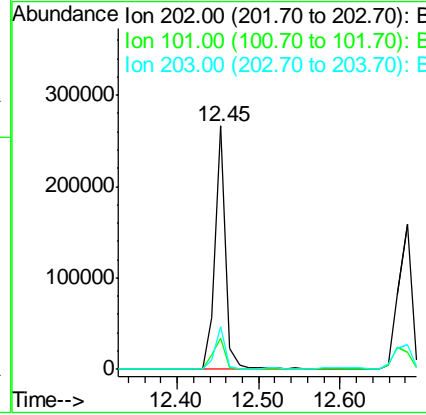
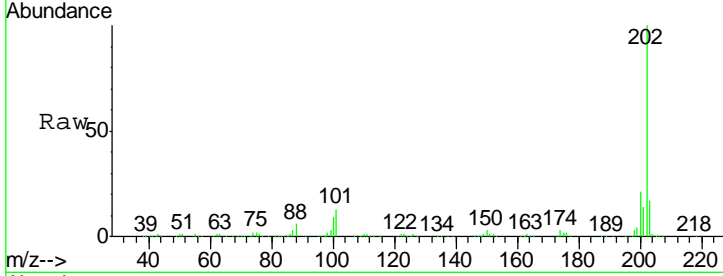
#74
 Fluoranthene
 Concen: 8.79 ng
 RT: 12.45 min Scan# 907
 Delta R.T. -0.02 min
 Lab File: BF090994.D
 Acq: 2 Nov 2016 21:51

Instrument :
 BNA_F
 ClientSampled :
 S-1-0.5-1.0

Tgt Ion	Ratio	Lower	Upper
202	100		
101	12.8	0.0	38.3
203	17.3	0.0	37.3

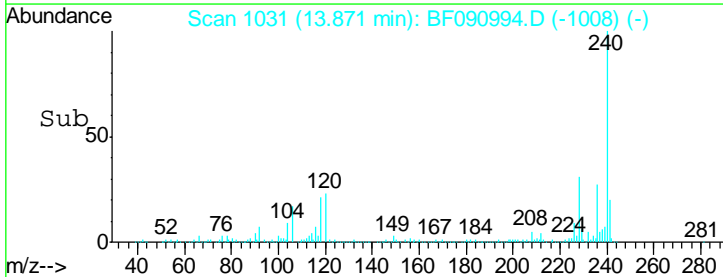
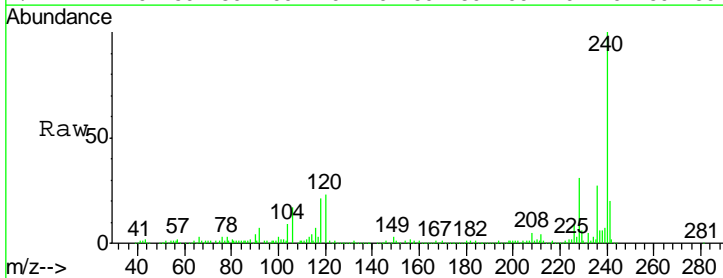
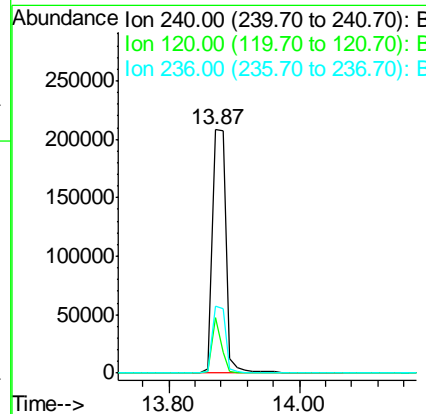
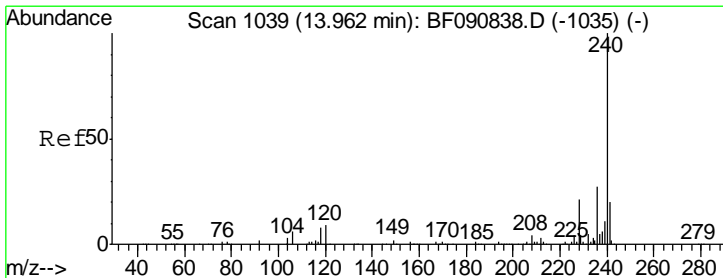
Manual Integrations
 APPROVED

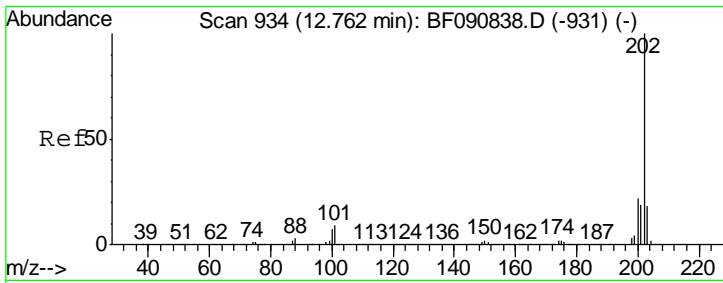
Umangi
 11/3/2016 7:13:28 PM



#75
 Chrysene-d12
 Concen: 20.00 ng
 RT: 13.87 min Scan# 1031
 Delta R.T. -0.03 min
 Lab File: BF090994.D
 Acq: 2 Nov 2016 21:51

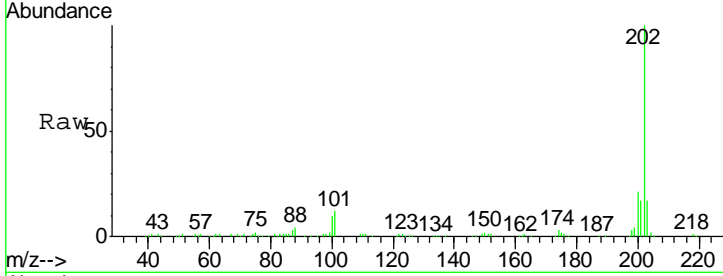
Tgt Ion	Ratio	Lower	Upper
240	100		
120	22.9	16.2	24.2
236	27.4	18.4	27.6





#77
 Pyrene
 Concen: 9.39 ng
 RT: 12.68 min Scan# 927
 Delta R.T. -0.02 min
 Lab File: BF090994.D
 Acq: 2 Nov 2016 21:51

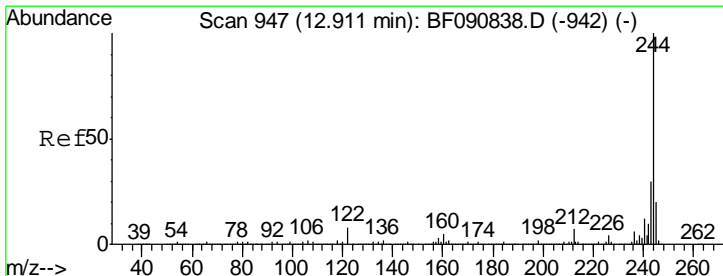
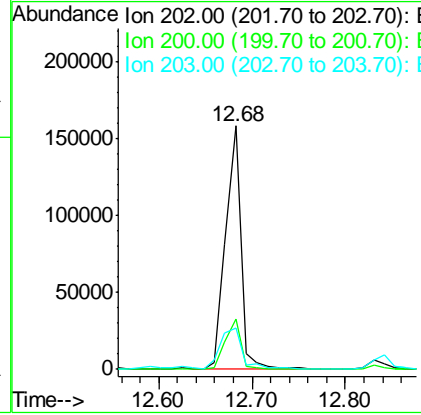
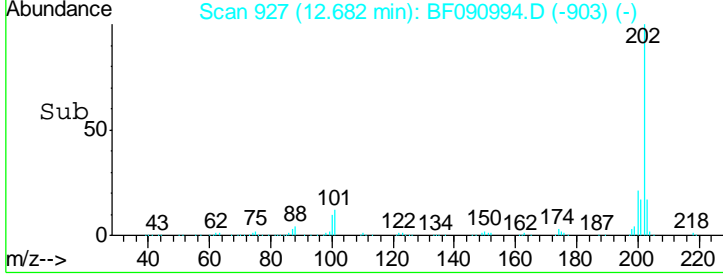
Instrument :
 BNA_F
ClientSampled :
 S-1-0.5-1.0



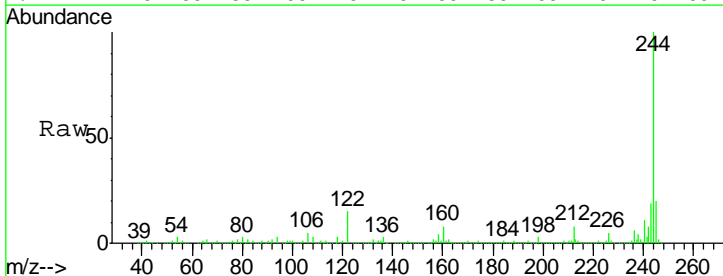
Tgt Ion: 202 Resp: 182954

Ion	Ratio	Lower	Upper
202	100		
200	20.9	15.0	22.4
203	17.2	14.1	21.1

Manual Integrations
APPROVED
 Umangi
 11/3/2016 7:13:28 PM

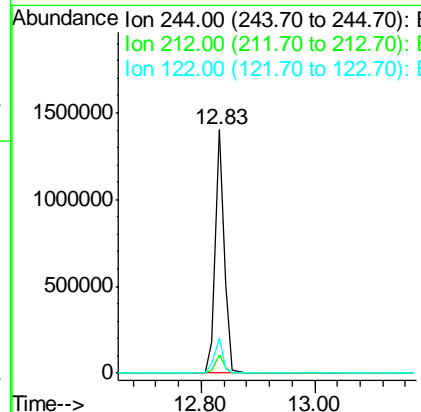
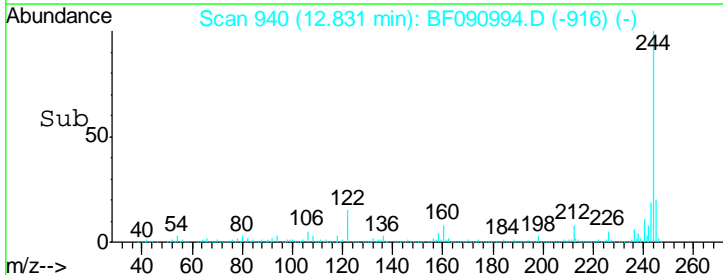


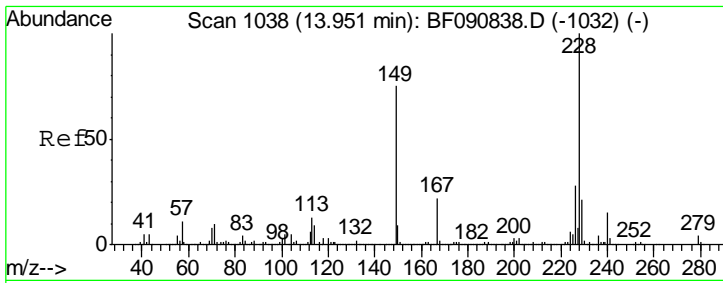
#78
 Terphenyl-d14
 Concen: 120.07 ng
 RT: 12.83 min Scan# 940
 Delta R.T. -0.02 min
 Lab File: BF090994.D
 Acq: 2 Nov 2016 21:51



Tgt Ion: 244 Resp: 1467985

Ion	Ratio	Lower	Upper
244	100		
212	7.7	4.3	6.5#
122	14.6	17.4	26.2#





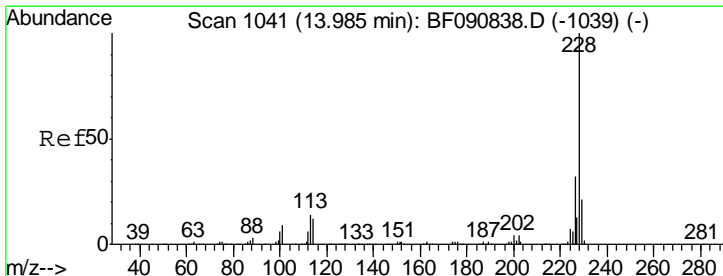
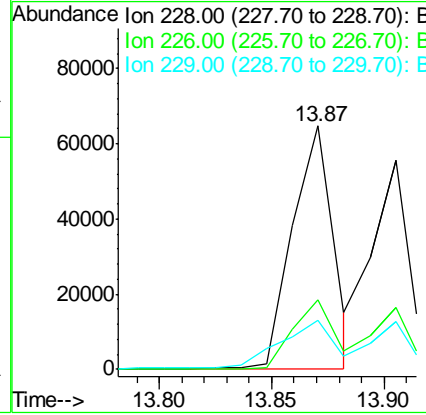
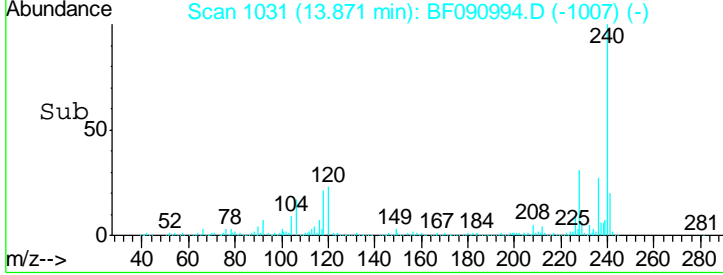
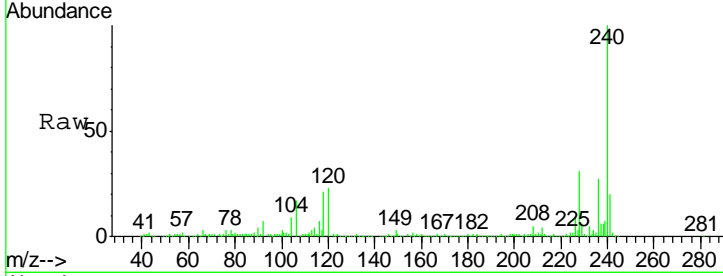
#80
 Benzo(a)anthracene
 Concen: 5.06 ng m
 RT: 13.87 min Scan# 1031
 Delta R.T. -0.02 min
 Lab File: BF090994.D
 Acq: 2 Nov 2016 21:51

Instrument :
 BNA_F
 ClientSampled :
 S-1-0.5-1.0

Tgt Ion	Resp	Lower	Upper
228	100		
226	28.6	20.0	30.0
229	20.1	15.4	23.2

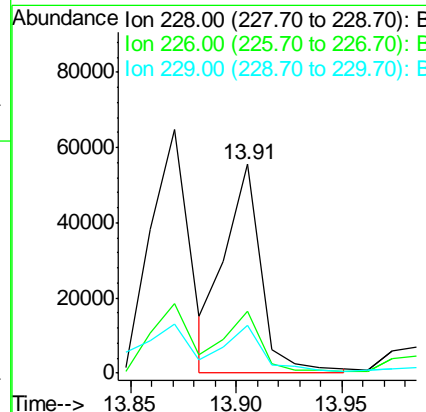
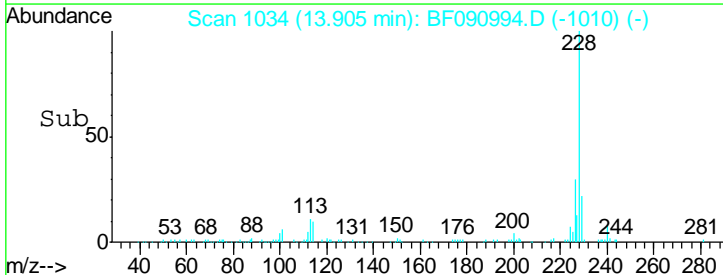
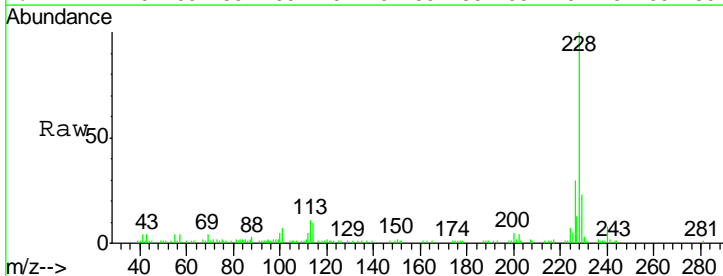
Manual Integrations
 APPROVED

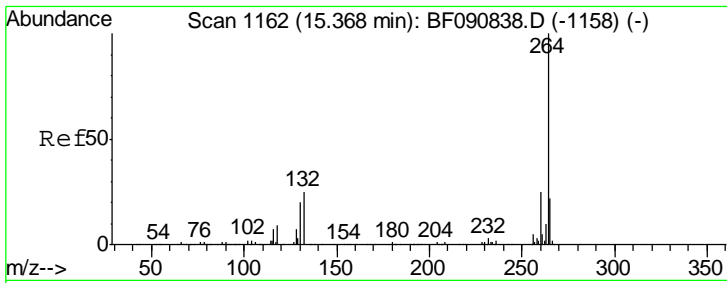
Umangi
 11/3/2016 7:13:28 PM



#82
 Chrysene
 Concen: 3.99 ng m
 RT: 13.91 min Scan# 1034
 Delta R.T. -0.02 min
 Lab File: BF090994.D
 Acq: 2 Nov 2016 21:51

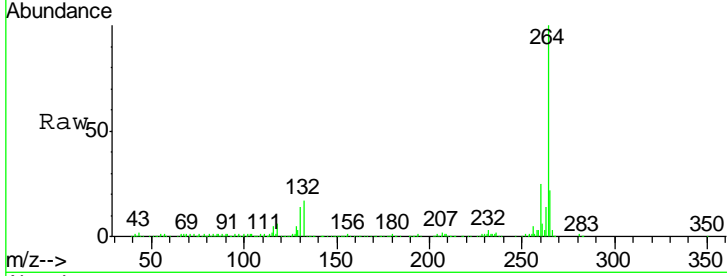
Tgt Ion	Resp	Lower	Upper
228	100		
226	29.6	21.0	31.4
229	23.0	15.6	23.4





#86
 Perylene-d12
 Concen: 20.00 ng
 RT: 15.28 min Scan# 1154
 Delta R.T. -0.02 min
 Lab File: BF090994.D
 Acq: 2 Nov 2016 21:51

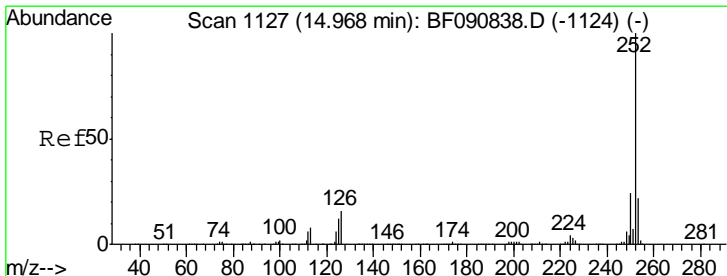
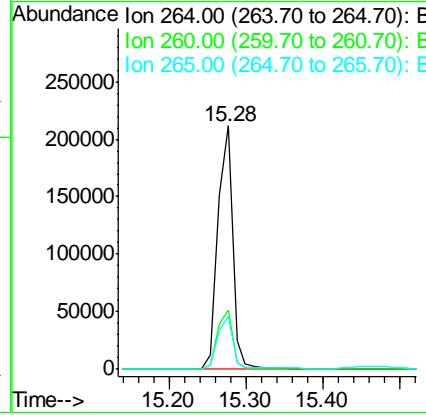
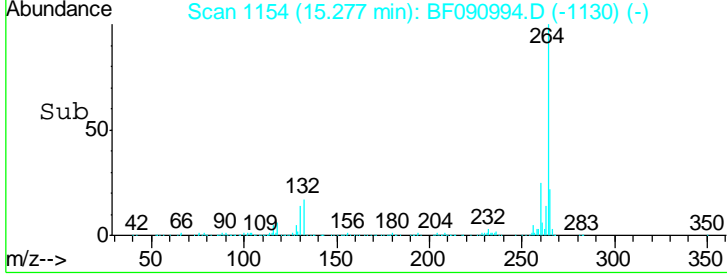
Instrument :
 BNA_F
 ClientSampled :
 S-1-0.5-1.0



Tgt Ion: 264 Resp: 285696

Ion	Ratio	Lower	Upper
264	100		
260	24.5	16.7	25.1
265	21.6	17.2	25.8

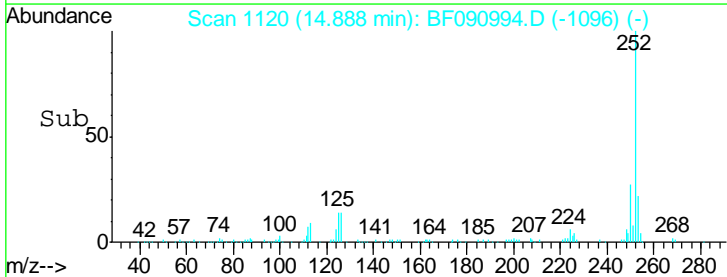
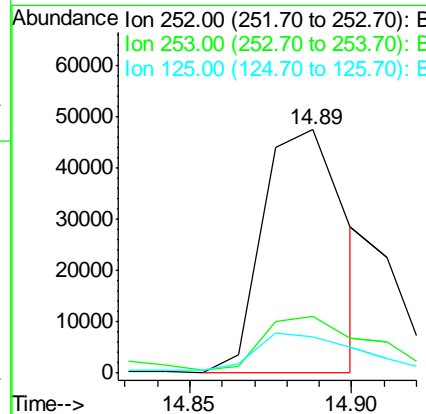
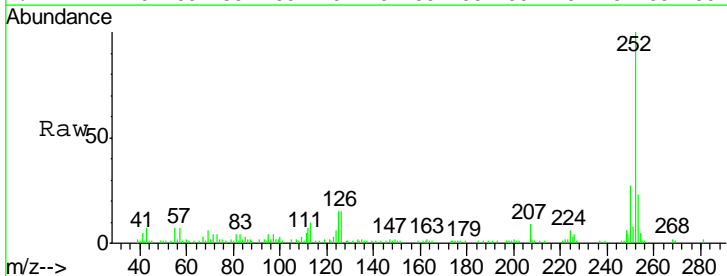
Manual Integrations
APPROVED
 Umangi
 11/3/2016 7:13:28 PM

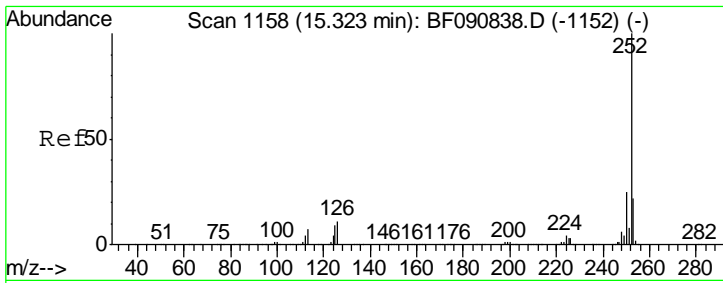


#87
 Benzo(b)fluoranthene
 Concen: 4.41 ng m
 RT: 14.89 min Scan# 1120
 Delta R.T. -0.02 min
 Lab File: BF090994.D
 Acq: 2 Nov 2016 21:51

Tgt Ion: 252 Resp: 84674

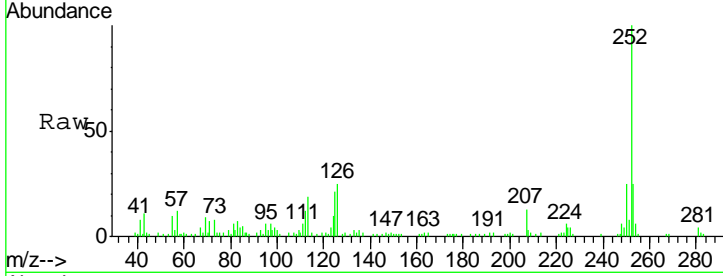
Ion	Ratio	Lower	Upper
252	100		
253	23.4	17.5	26.3
125	14.9	17.1	25.7#





#89
 Benzo(a)pyrene
 Concen: 3.16 ng
 RT: 15.21 min Scan# 1148
 Delta R.T. -0.03 min
 Lab File: BF090994.D
 Acq: 2 Nov 2016 21:51

Instrument :
 BNA_F
ClientSampled :
 S-1-0.5-1.0



Tgt Ion: 252 Resp: 52164

Ion	Ratio	Lower	Upper
252	100		
253	25.4	17.2	25.8
125	21.4	18.0	27.0

Manual Integrations
APPROVED
 Umangi
 11/3/2016 7:13:28 PM

