

Data Path : Z:\HPCHEM1\BNA_F\DATA\BF110216\
 Data File : BF090979.D
 Acq On : 2 Nov 2016 15:02
 Operator : UM/SJ
 Sample : H5491-14
 Misc :
 ALS Vial : 6 Sample Multiplier: 1

Instrument :
 BNA_F
 ClientSampleId :
 GW-72-8.1-10.0

Integration Parameters: rteint.p
 Integrator: RTE
 Smoothing : ON
 Sampling : 1
 Start Thrs: 0.2
 Stop Thrs : 0

Filtering: 5
 Min Area: 3 % of largest Peak
 Max Peaks: 100
 Peak Location: TOP

If leading or trailing edge < 100 prefer < Baseline drop else tangent >
 Peak separation: 5

Method : Z:\HPCHEM1\BNA_F\METHODS\8270-BF102616.M
 Title : ASP BNA STANDARDS FOR 5 POINT CALIBRATION

Signal : TIC

peak #	R.T. min	first scan	max scan	last scan	PK TY	peak height	corr. area	corr. % max.	% of total
1	4.887	241	245	256	rBV	1750721	2423003	43.28%	5.918%
2	5.321	280	283	301	rBV	3098846	3264788	58.31%	7.974%
3	6.361	372	374	377	rBV	2139674	2496925	44.60%	6.098%
4	6.487	383	385	388	rBV	3249711	3137837	56.04%	7.664%
5	6.716	403	405	408	rBV	948228	945248	16.88%	2.309%
6	6.796	410	412	414	rBV	603817	602625	10.76%	1.472%
7	6.876	416	419	421	rBV	3488275	3148387	56.23%	7.689%
8	7.287	452	455	461	rBV	2452360	2623186	46.85%	6.407%
9	7.413	464	466	469	rVB	54969	76583	1.37%	0.187%
10	7.767	494	497	508	rVB	67442	213365	3.81%	0.521%
11	7.916	508	510	515	rBV	126740	199159	3.56%	0.486%
12	8.007	515	518	520	rBV	1612025	1493923	26.68%	3.649%
13	8.373	548	550	552	rBV2	53217	80645	1.44%	0.197%
14	8.419	552	554	560	rVB	166008	272428	4.87%	0.665%
15	8.933	597	599	604	rBV2	29650	58864	1.05%	0.144%
16	9.093	609	613	615	rBV	4728889	5598959	100.00%	13.674%
17	9.756	669	671	674	rBV	1386693	1563590	27.93%	3.819%
18	9.985	688	691	696	rBV	68449	94210	1.68%	0.230%
19	10.556	738	741	743	rBV2	2417746	3047789	54.43%	7.444%
20	10.922	771	773	778	rBV3	46633	59442	1.06%	0.145%
21	11.242	799	801	803	rBV	1915635	1666632	29.77%	4.070%
22	11.608	830	833	839	rVB	52377	94372	1.69%	0.230%
23	12.522	911	913	916	rBV	52895	63715	1.14%	0.156%
24	12.831	937	940	943	rBV	4778861	4905177	87.61%	11.980%
25	13.071	957	961	963	rBV3	26016	75541	1.35%	0.184%
26	13.745	1016	1020	1023	rBV2	20014	61541	1.10%	0.150%
27	13.871	1029	1031	1034	rBV	960567	1328856	23.73%	3.245%
28	14.168	1053	1057	1058	rBV3	20240	62795	1.12%	0.153%
29	14.214	1058	1061	1065	rVV	59646	105050	1.88%	0.257%
30	14.648	1096	1099	1103	rBV5	25702	56623	1.01%	0.138%
31	15.002	1128	1130	1134	rBV5	17802	62932	1.12%	0.154%
32	15.265	1150	1153	1156	rBV	650936	934297	16.69%	2.282%
33	15.985	1214	1216	1221	rBV6	17809	60029	1.07%	0.147%
34	16.145	1228	1230	1235	rVB2	36086	66616	1.19%	0.163%

Data Path : Z:\HPCHEM1\BNA_F\DATA\BF110216\
Data File : BF090979.D
Acq On : 2 Nov 2016 15:02
Operator : UM/SJ
Sample : H5491-14
Misc :
ALS Vial : 6 Sample Multiplier: 1

Instrument :
BNA_F
ClientSampleId :
GW-72-8.1-10.0

Integration Parameters: rteint.p
Integrator: RTE
Smoothing : ON Filtering: 5
Sampling : 1 Min Area: 3 % of largest Peak
Start Thrs: 0.2 Max Peaks: 100
Stop Thrs : 0 Peak Location: TOP

If leading or trailing edge < 100 prefer < Baseline drop else tangent >
Peak separation: 5

Method : Z:\HPCHEM1\BNA_F\METHODS\8270-BF102616.M
Title : ASP BNA STANDARDS FOR 5 POINT CALIBRATION

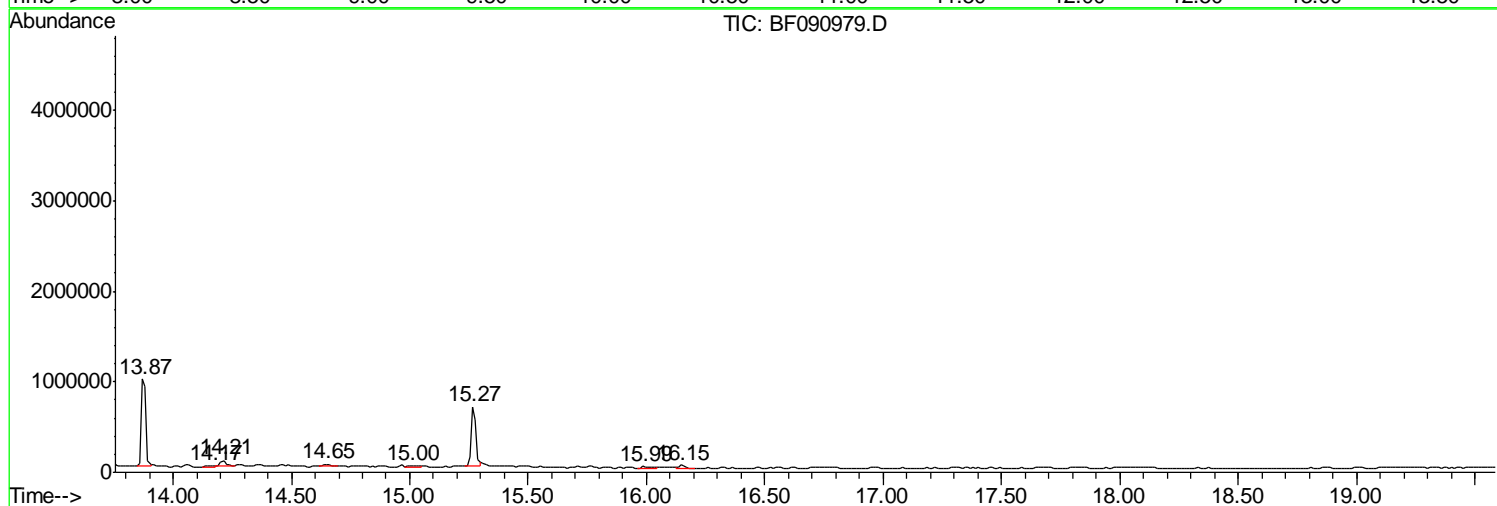
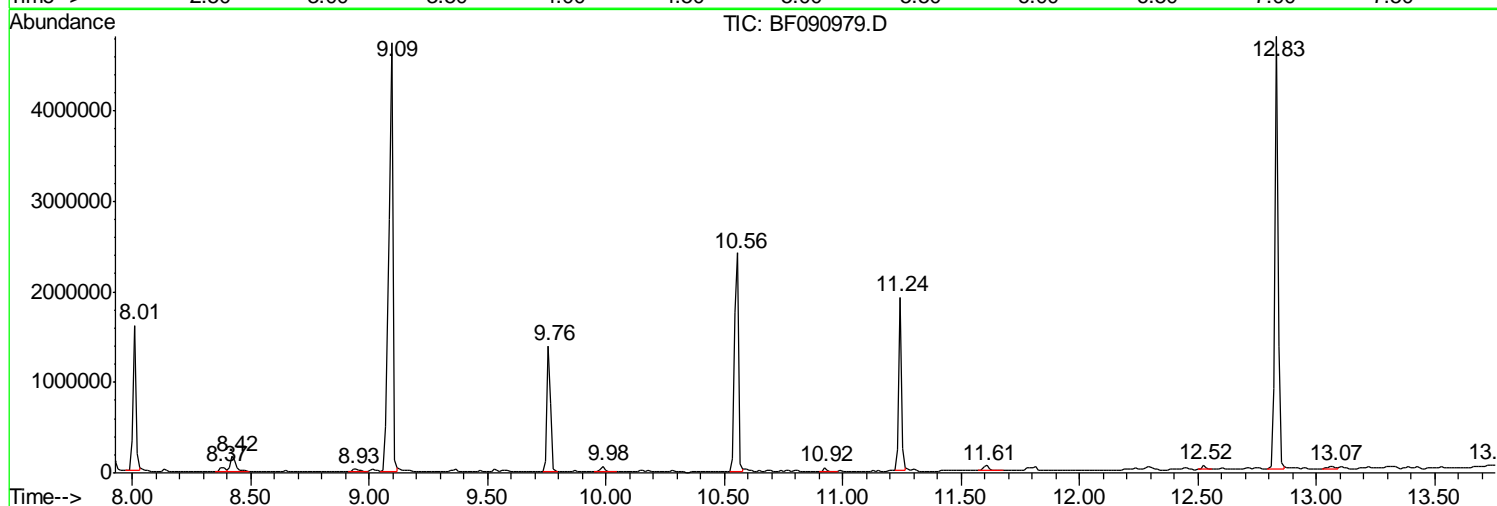
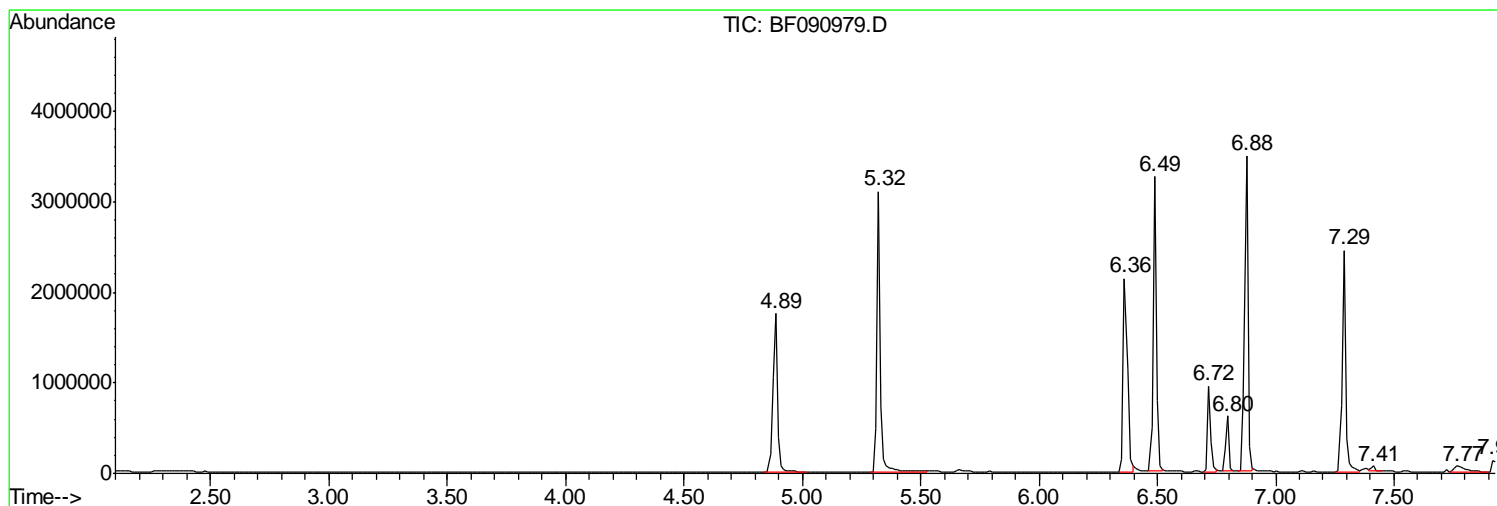
Sum of corrected areas: 40945132

Data Path : Z:\HPCHEM1\BNA_F\DATA\BF110216\
 Data File : BF090979.D
 Acq On : 2 Nov 2016 15:02
 Operator : UM/SJ
 Sample : H5491-14
 Misc :
 ALS Vial : 6 Sample Multiplier: 1

Instrument :
 BNA_F
 ClientSampleId :
 GW-72-8.1-10.0

Quant Method : Z:\HPCHEM1\BNA_F\METHODS\8270-BF102616.M
 Quant Title : ASP BNA STANDARDS FOR 5 POINT CALIBRATION

TIC Library : C:\DATABASE\NIST02.L
 TIC Integration Parameters: LSCINT.P



Data Path : Z:\HPCHEM1\BNA_F\DATA\BF110216\
 Data File : BF090979.D
 Acq On : 2 Nov 2016 15:02
 Operator : UM/SJ
 Sample : H5491-14
 Misc :
 ALS Vial : 6 Sample Multiplier: 1

Instrument :
 BNA_F
 ClientSampleID :
 GW-72-8.1-10.0

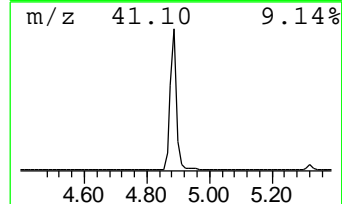
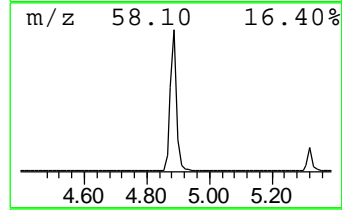
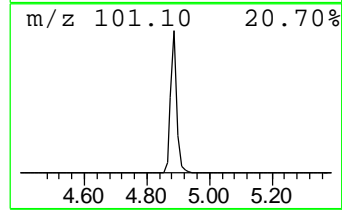
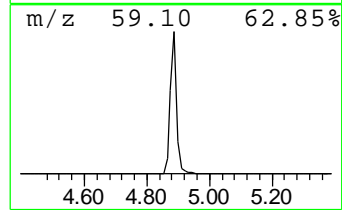
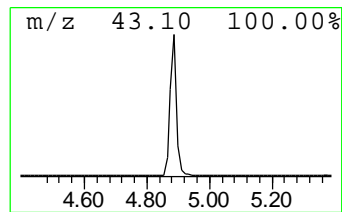
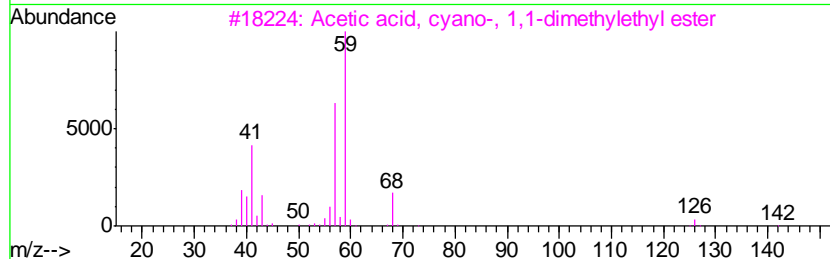
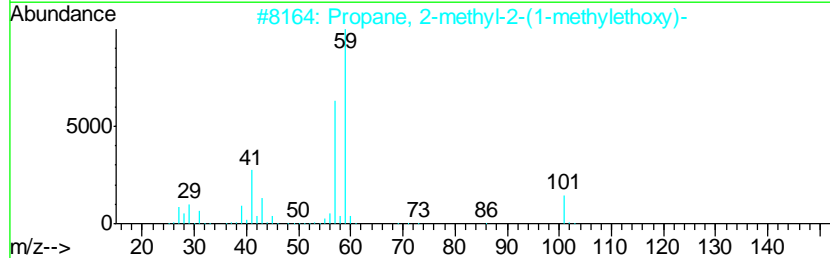
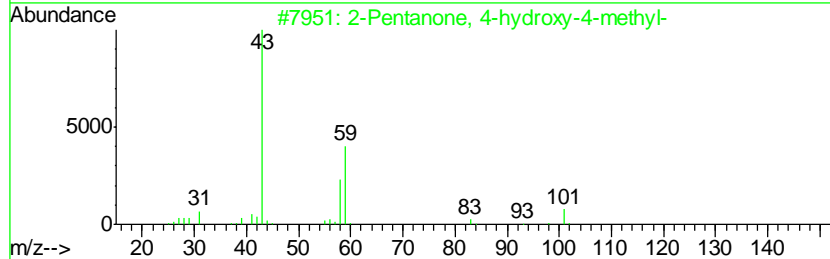
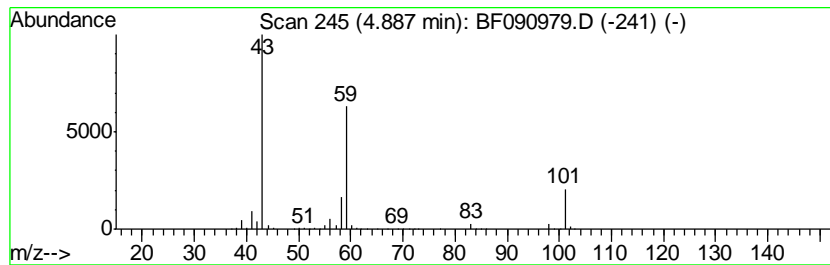
Quant Method : Z:\HPCHEM1\BNA_F\METHODS\8270-BF102616.M
 Quant Title : ASP BNA STANDARDS FOR 5 POINT CALIBRATION

TIC Library : C:\DATABASE\NIST02.L
 TIC Integration Parameters: LSCINT.P

 Peak Number 1 2-Pentanone, 4-hydroxy-4-me... Concentration Rank 3

R.T.	EstConc	Area	Relative to ISTD	R.T.
4.89	51.27 ng	2423000	1,4-Dichlorobenzene-d4	6.72

Hit#	of	Tentative ID	MW	MolForm	CAS#	Qual
1	5	2-Pentanone, 4-hydroxy-4-methyl-	116	C6H12O2	000123-42-2	56
2		Propane, 2-methyl-2-(1-methyleth...	116	C7H16O	017348-59-3	28
3		Acetic acid, cyano-, 1,1-dimethy...	141	C7H11NO2	001116-98-9	17
4		5-Hexen-2-one	98	C6H10O	000109-49-9	9
5		2,3-Butanedione, monooxime	101	C4H7NO2	000057-71-6	9



Data Path : Z:\HPCHEM1\BNA_F\DATA\BF110216\
 Data File : BF090979.D
 Acq On : 2 Nov 2016 15:02
 Operator : UM/SJ
 Sample : H5491-14
 Misc :
 ALS Vial : 6 Sample Multiplier: 1

Instrument :
 BNA_F
 ClientSampleID :
 GW-72-8.1-10.0

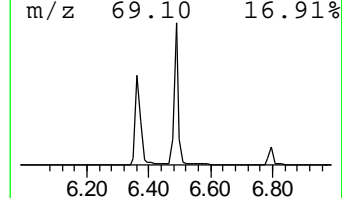
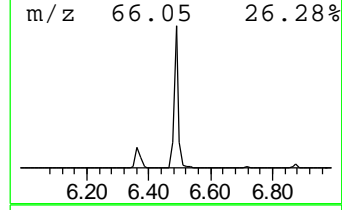
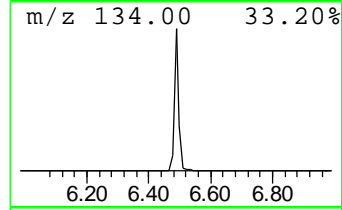
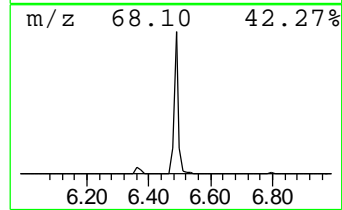
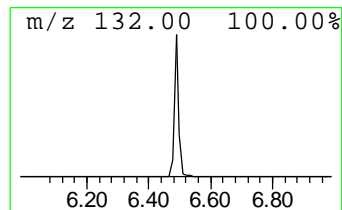
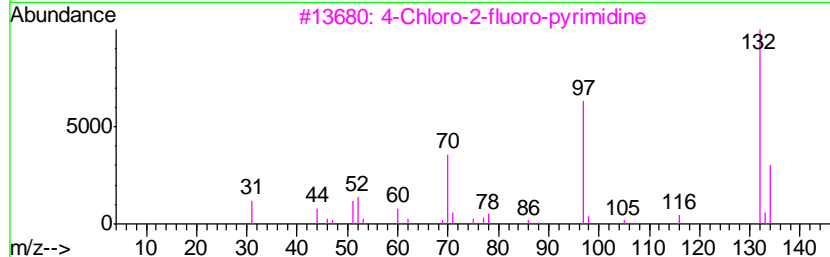
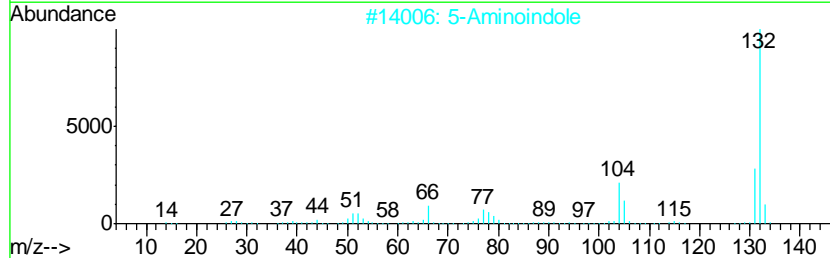
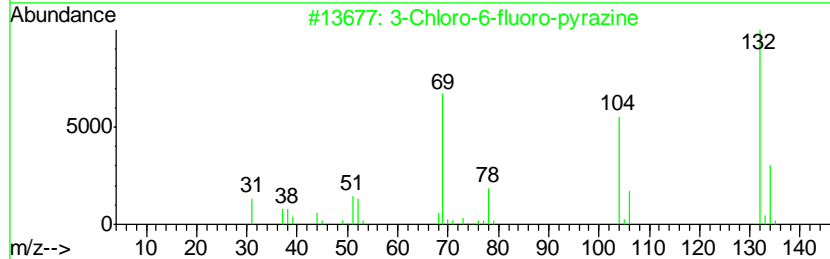
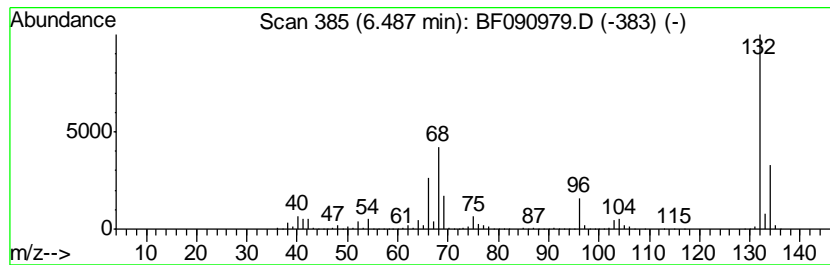
Quant Method : Z:\HPCHEM1\BNA_F\METHODS\8270-BF102616.M
 Quant Title : ASP BNA STANDARDS FOR 5 POINT CALIBRATION

TIC Library : C:\DATABASE\NIST02.L
 TIC Integration Parameters: LSCINT.P

 Peak Number 2 unknown6.49 Concentration Rank 2

R.T.	EstConc	Area	Relative to ISTD	R.T.
6.49	66.39 ng	3137840	1,4-Dichlorobenzene-d4	6.72

Hit#	of	Tentative ID	MW	MolForm	CAS#	Qual
1	5	3-Chloro-6-fluoro-pyrazine	132	C4H2ClFN2	1000146-10-7	16
2		5-Aminoindole	132	C8H8N2	005192-03-0	12
3		4-Chloro-2-fluoro-pyrimidine	132	C4H2ClFN2	051422-00-5	9
4		1-Methylpyrrolo[1,2-a]pyrazine	132	C8H8N2	064608-59-9	9
5		4-Chloro-6-fluoro-pyrimidine	132	C4H2ClFN2	051422-01-6	9



Data Path : Z:\HPCHEM1\BNA_F\DATA\BF110216\
 Data File : BF090979.D
 Acq On : 2 Nov 2016 15:02
 Operator : UM/SJ
 Sample : H5491-14
 Misc :
 ALS Vial : 6 Sample Multiplier: 1

Instrument :
 BNA_F
 ClientSampleID :
 GW-72-8.1-10.0

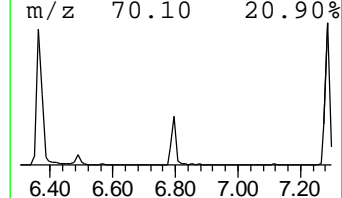
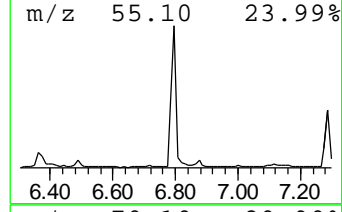
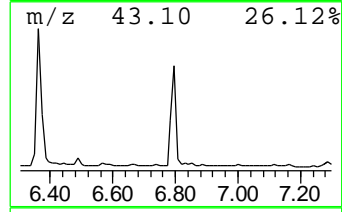
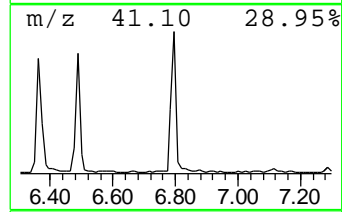
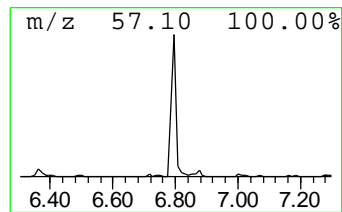
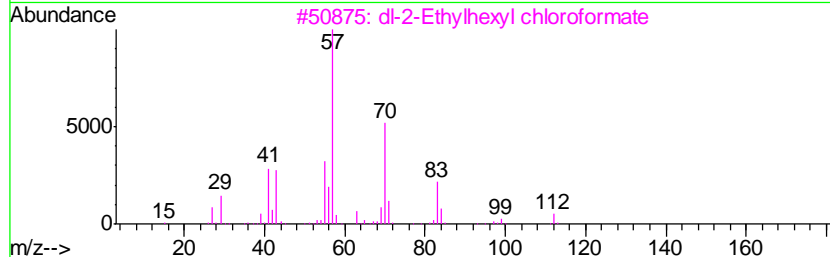
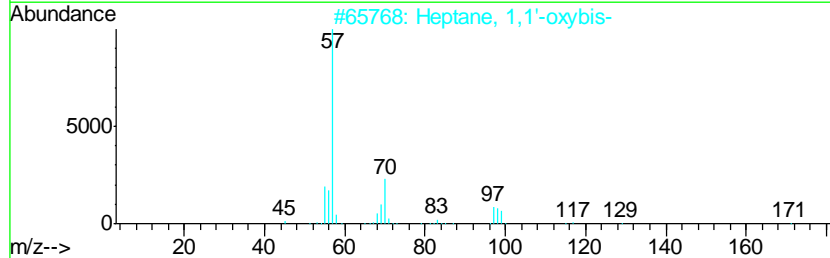
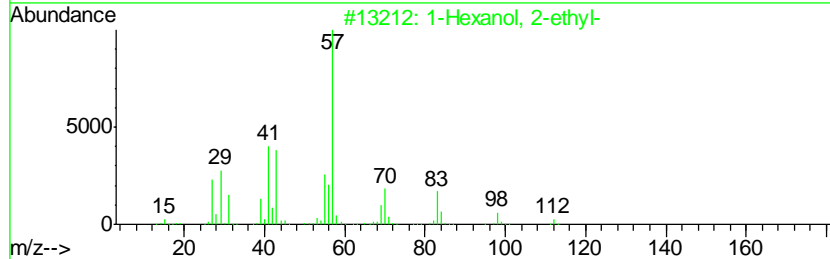
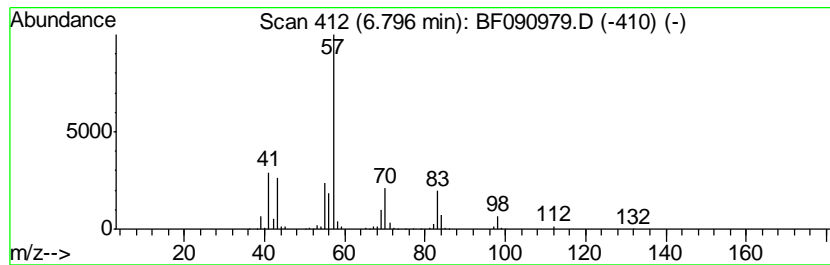
Quant Method : Z:\HPCHEM1\BNA_F\METHODS\8270-BF102616.M
 Quant Title : ASP BNA STANDARDS FOR 5 POINT CALIBRATION

TIC Library : C:\DATABASE\NIST02.L
 TIC Integration Parameters: LSCINT.P

 Peak Number 3 1-Hexanol, 2-ethyl- Concentration Rank 4

R.T.	EstConc	Area	Relative to ISTD	R.T.
6.80	12.75 ng	602625	1,4-Dichlorobenzene-d4	6.72

Hit#	of	Tentative ID	MW	MolForm	CAS#	Qual
1	5	1-Hexanol, 2-ethyl-	130	C8H18O	000104-76-7	83
2		Heptane, 1,1'-oxybis-	214	C14H30O	000629-64-1	53
3		dl-2-Ethylhexyl chloroformate	192	C9H17ClO2	024468-13-1	50
4		2-Propyl-1-pentanol	130	C8H18O	058175-57-8	42
5		1-Decene, 2,4-dimethyl-	168	C12H24	055170-80-4	40



Data Path : Z:\HPCHEM1\BNA_F\DATA\BF110216\
 Data File : BF090979.D
 Acq On : 2 Nov 2016 15:02
 Operator : UM/SJ
 Sample : H5491-14
 Misc :
 ALS Vial : 6 Sample Multiplier: 1

Instrument :
 BNA_F
 ClientSampleId :
 GW-72-8.1-10.0

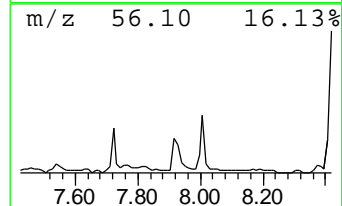
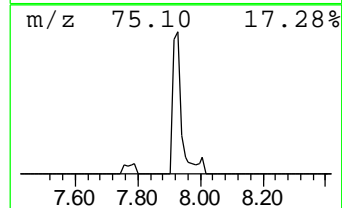
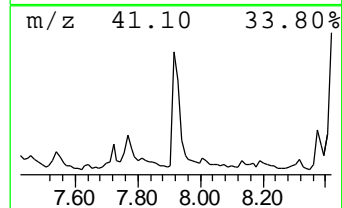
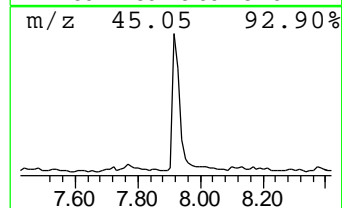
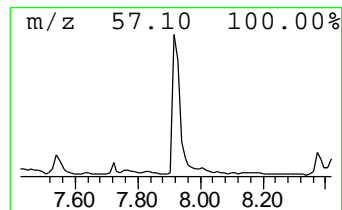
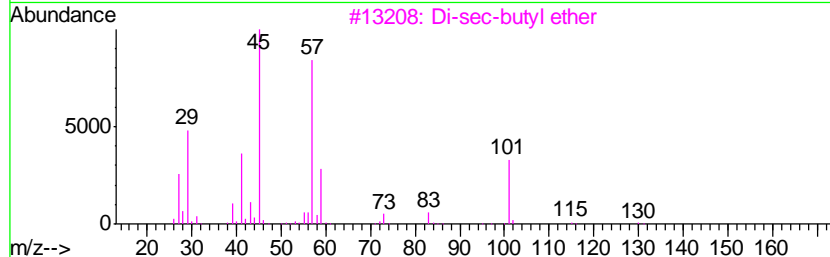
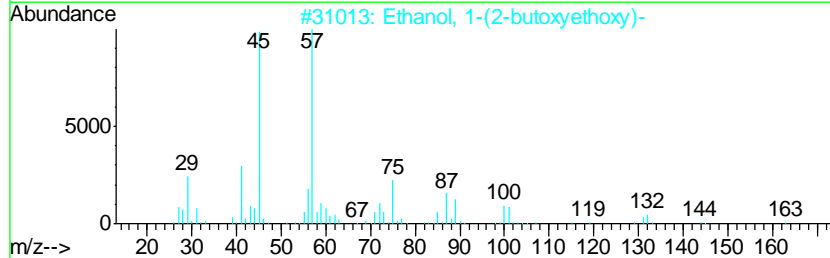
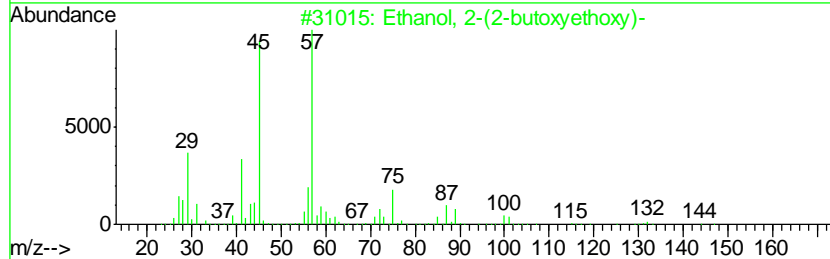
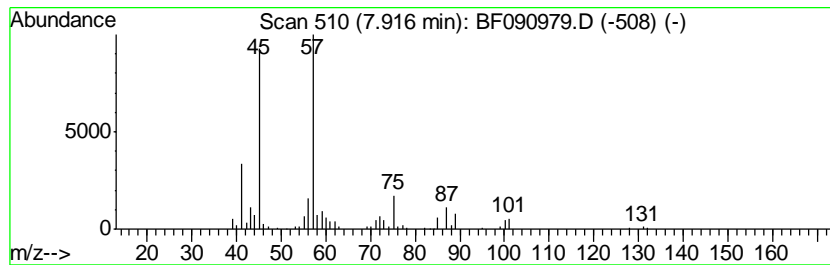
Quant Method : Z:\HPCHEM1\BNA_F\METHODS\8270-BF102616.M
 Quant Title : ASP BNA STANDARDS FOR 5 POINT CALIBRATION

TIC Library : C:\DATABASE\NIST02.L
 TIC Integration Parameters: LSCINT.P

 Peak Number 5 Ethanol, 2-(2-butoxyethoxy)- Concentration Rank 5

R.T.	EstConc	Area	Relative to ISTD	R.T.
7.92	2.67 ng	199159	Naphthalene-d8	8.01

Hit#	of	Tentative ID	MW	MolForm	CAS#	Qual
1	5	Ethanol, 2-(2-butoxyethoxy)-	162	C8H18O3	000112-34-5	86
2		Ethanol, 1-(2-butoxyethoxy)-	162	C8H18O3	054446-78-5	83
3		Di-sec-butyl ether	130	C8H18O	006863-58-7	53
4		3,3-Dimethylbutane-2-ol	102	C6H14O	000464-07-3	53
5		Ethanol, 2-[2-(2-butoxyethoxy)et...	206	C10H22O4	000143-22-6	50



Data Path : Z:\HPCHEM1\BNA_F\DATA\BF110216\
Data File : BF090979.D
Acq On : 2 Nov 2016 15:02
Operator : UM/SJ
Sample : H5491-14
Misc :
ALS Vial : 6 Sample Multiplier: 1

Instrument :
BNA_F
ClientSampleId :
GW-72-8.1-10.0

Quant Method : Z:\HPCHEM1\BNA_F\METHODS\8270-BF102616.M
Quant Title : ASP BNA STANDARDS FOR 5 POINT CALIBRATION

TIC Library : C:\DATABASE\NIST02.L
TIC Integration Parameters: LSCINT.P

TIC Top Hit name	RT	EstConc	Units	Response	--Internal Standard--			
					#	RT	Resp	Conc
2-Pentanone, 4-hy...	4.89	51.3	ng	2423000	1	6.72	945248	20.0
unknown6.49	6.49	66.4	ng	3137840	1	6.72	945248	20.0
1-Hexanol, 2-ethyl-	6.80	12.8	ng	602625	1	6.72	945248	20.0
Ethanol, 2-(2-but...	7.92	2.7	ng	199159	2	8.01	1493920	20.0