

Data Path : \\74.0.250.170\SVOASRV\HPCHEM1\BNA F\DATA\BF110217\
 Data File : BF100118.D
 Acq On : 3 Nov 2017 7:15
 Operator : SJ/JU
 Sample : I6273-03
 Misc :
 ALS Vial : 37 Sample Multiplier: 1

Instrument :
 BNA_F
 ClientSampleId :

Quant Time: Nov 03 07:47:30 2017
 Quant Method : Z:\HPCHEM1\BNA F\METHODS\8270-BF102317.M
 Quant Title : ASP BNA STANDARDS FOR 5 POINT CALIBRATION
 QLast Update : Wed Nov 01 18:13:08 2017
 Response via : Initial Calibration

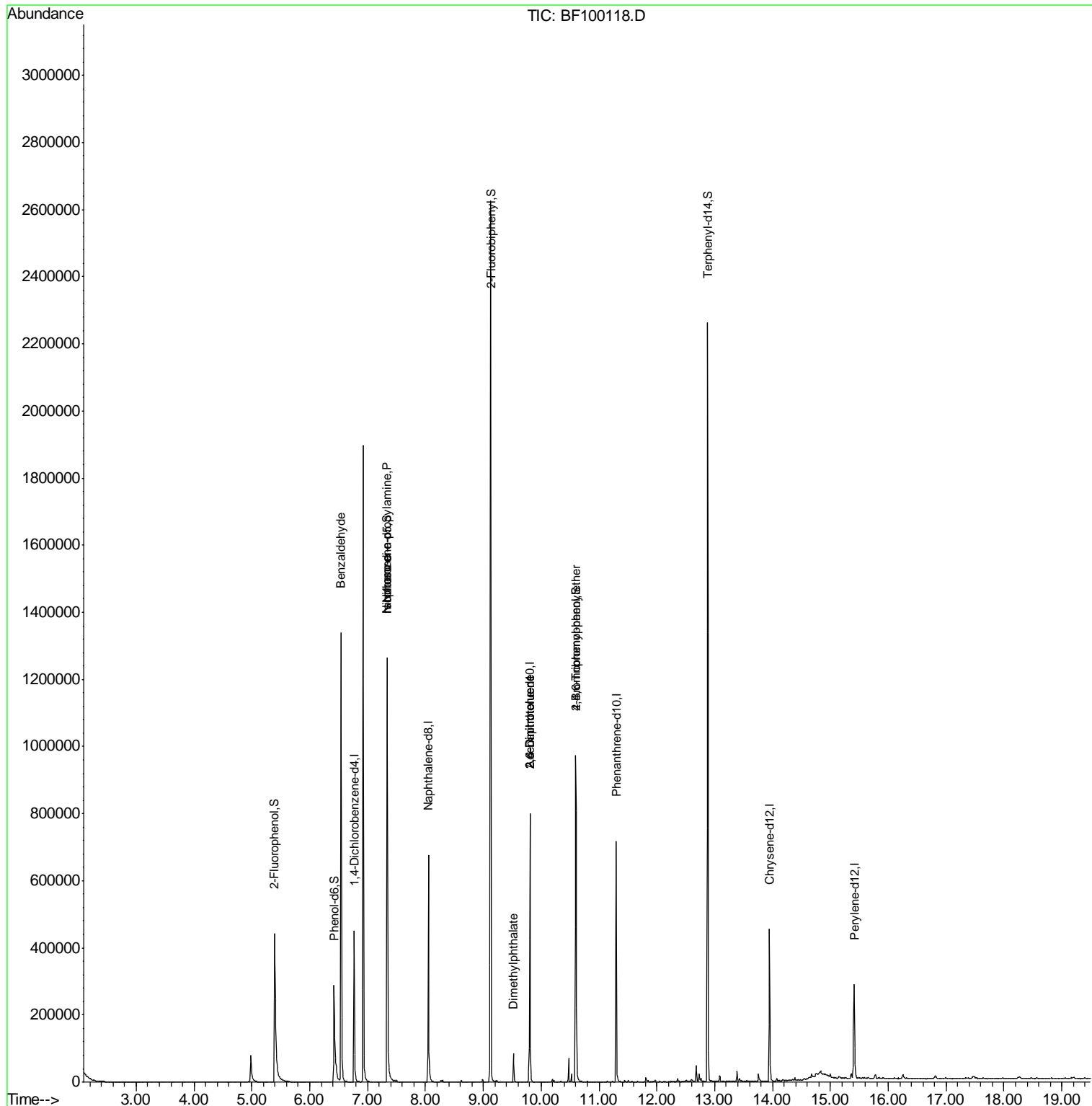
Internal Standards	R.T.	QIon	Response	Conc	Units	Dev(Min)
1) 1,4-Dichlorobenzene-d4	6.77	152	83470	20.00	ng	0.00
21) Naphthalene-d8	8.05	136	343729	20.00	ng	-0.01
38) Acenaphthene-d10	9.80	164	158062	20.00	ng	-0.01
63) Phenanthrene-d10	11.30	188	271895	20.00	ng	-0.01
75) Chrysene-d12	13.95	240	173803	20.00	ng	-0.03
86) Perylene-d12	15.41	264	139647	20.00	ng	-0.05
System Monitoring Compounds						
5) 2-Fluorophenol	5.39	112	245830	46.24	ng	0.00
7) Phenol-d6	6.42	99	183584	29.12	ng	-0.01
23) Nitrobenzene-d5	7.34	82	485025	90.85	ng	-0.01
41) 2,4,6-Tribromophenol	10.60	330	129121	89.64	ng	-0.01
44) 2-Fluorobiphenyl	9.13	172	954442	93.16	ng	0.00
78) Terphenyl-d14	12.88	244	817967	102.85	ng	-0.02
Target Compounds						
9) Benzaldehyde	6.54	77	7577	2.011	ng	93
19) n-Nitroso-di-n-propylamine	7.34	70	61209	16.568	ng	# 72
25) Isophorone	7.34	82	485025	50.064	ng	# 64
49) Dimethylphthalate	9.52	163	41393	3.307	ng	98
50) 2,6-Dinitrotoluene	9.80	165	19890	7.559	ng	# 25
56) 2,4-Dinitrotoluene	9.80	165	19890	6.276	ng	# 23
66) 4-Bromophenyl-phenylether	10.60	248	8485	2.964	ng	# 1

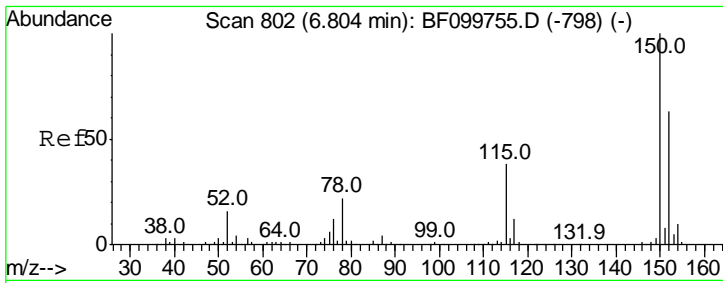
(#) = qualifier out of range (m) = manual integration (+) = signals summed

Data Path : \\74.0.250.170\SVOASRV\HPCHEM1\BNA F\DATA\BF110217\
 Data File : BF100118.D
 Acq On : 3 Nov 2017 7:15
 Operator : SJ/JU
 Sample : I6273-03
 Misc :
 ALS Vial : 37 Sample Multiplier: 1

Instrument :
 BNA_F
 ClientSampled :

Quant Time: Nov 03 07:47:30 2017
 Quant Method : Z:\HPCHEM1\BNA F\METHODS\8270-BF102317.M
 Quant Title : ASP BNA STANDARDS FOR 5 POINT CALIBRATION
 QLast Update : Wed Nov 01 18:13:08 2017
 Response via : Initial Calibration



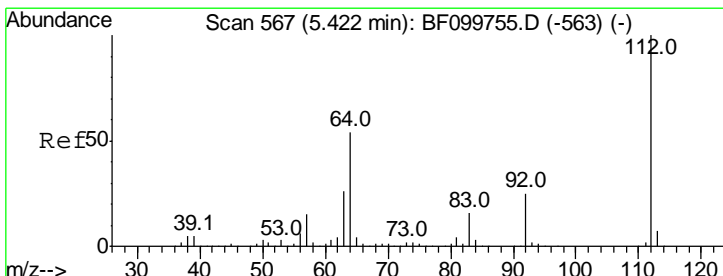
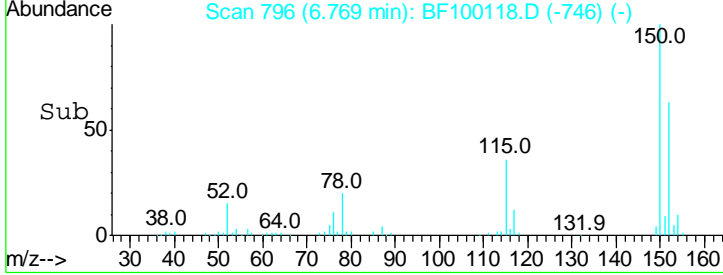
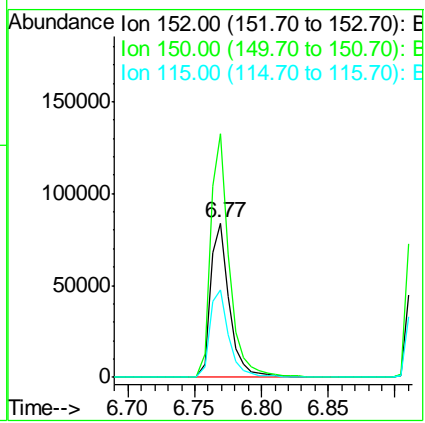
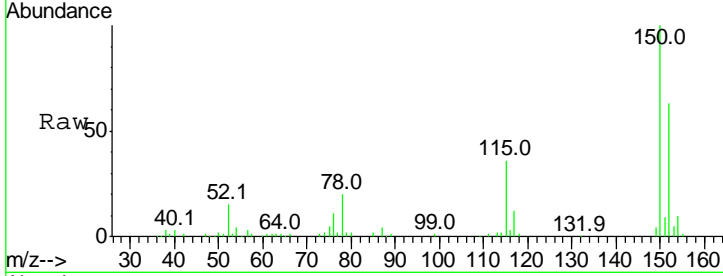


#1
 1,4-Dichlorobenzene-d4
 Concen: 20.000 ng
 RT: 6.77 min Scan# 796
 Delta R.T. -0.01 min
 Lab File: BF100118.D
 Acq: 3 Nov 2017 7:15

Instrument :
 BNA_F
 ClientSampled :

Tgt Ion:152 Resp: 83470

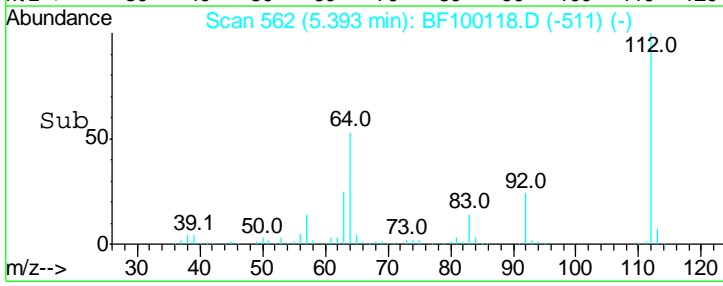
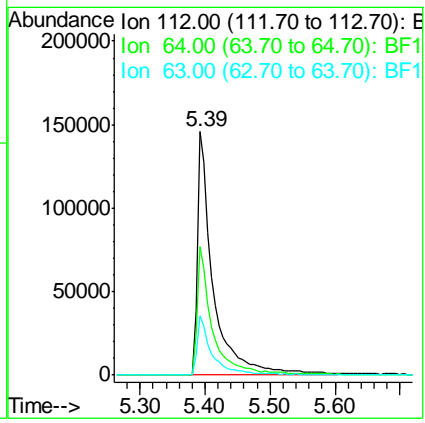
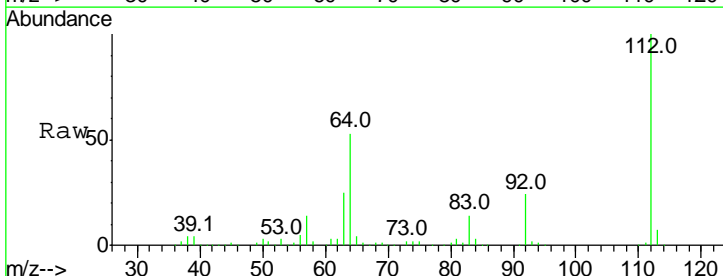
Ion	Ratio	Lower	Upper
152	100		
150	157.9	124.6	186.8
115	56.5	50.1	75.1

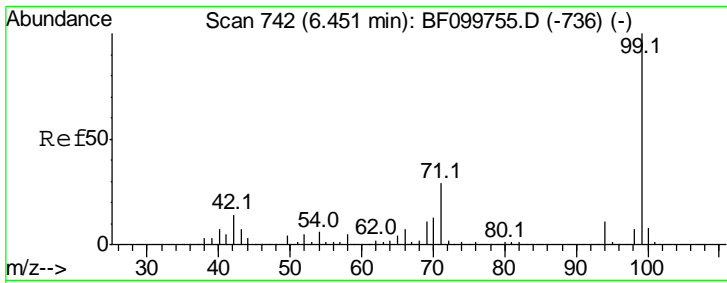


#5
 2-Fluorophenol
 Concen: 46.238 ng
 RT: 5.39 min Scan# 562
 Delta R.T. 0.00 min
 Lab File: BF100118.D
 Acq: 3 Nov 2017 7:15

Tgt Ion:112 Resp: 245830

Ion	Ratio	Lower	Upper
112	100		
64	53.0	47.9	71.9
63	24.6	23.7	35.5

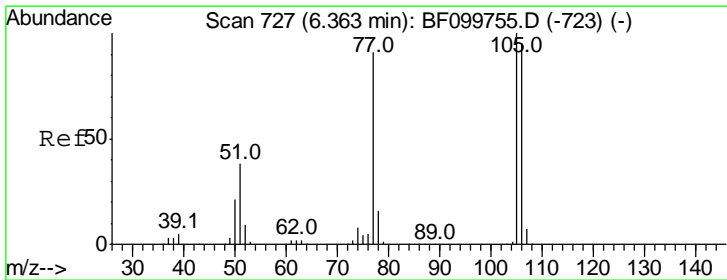
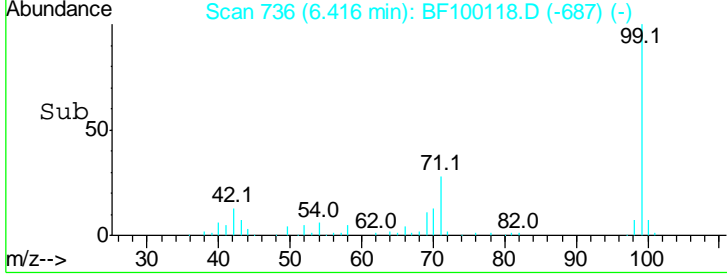
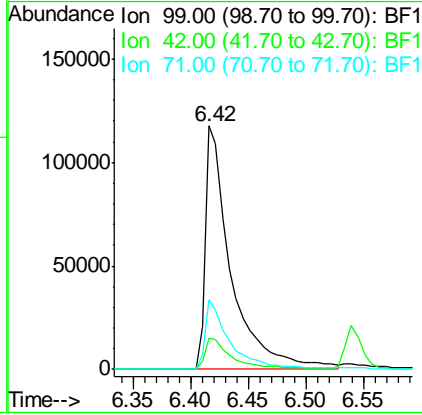
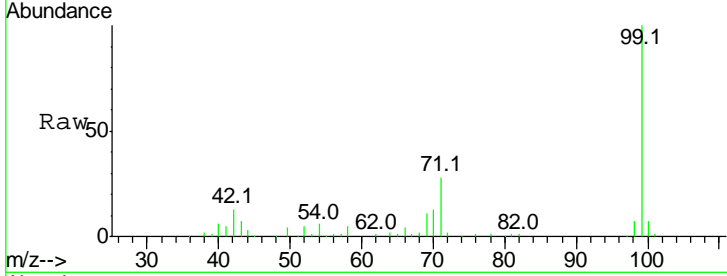




#7
 Phenol-d6
 Concen: 29.121 ng
 RT: 6.42 min Scan# 736
 Delta R.T. -0.01 min
 Lab File: BF100118.D
 Acq: 3 Nov 2017 7:15

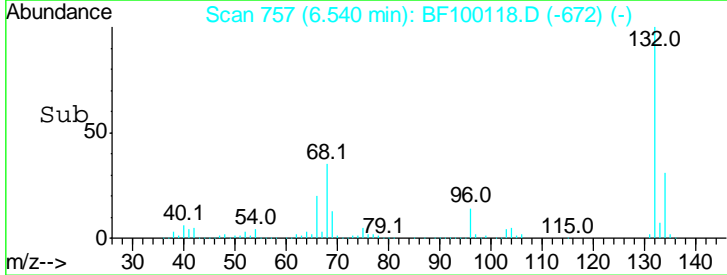
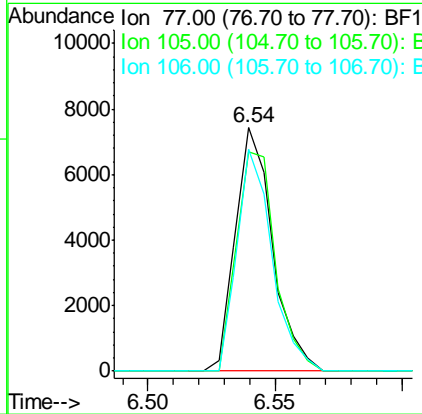
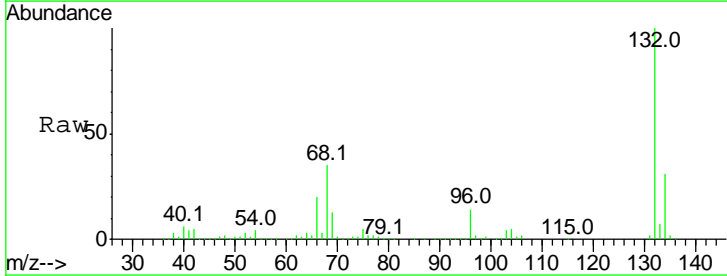
Instrument :
 BNA_F
 ClientSampled :

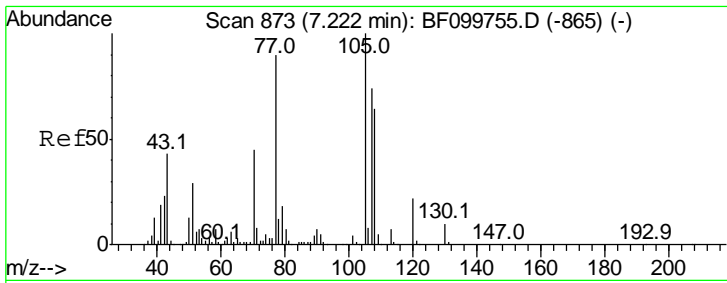
Tgt Ion	Resp	Lower	Upper
99	183584		
99	100		
42	12.9	14.5	21.7#
71	28.3	25.4	38.0



#9
 Benzaldehyde
 Concen: 2.011 ng
 RT: 6.54 min Scan# 757
 Delta R.T. 0.20 min
 Lab File: BF100118.D
 Acq: 3 Nov 2017 7:15

Tgt Ion	Resp	Lower	Upper
77	7577		
77	100		
105	89.9	81.1	121.1
106	91.4	74.5	114.5

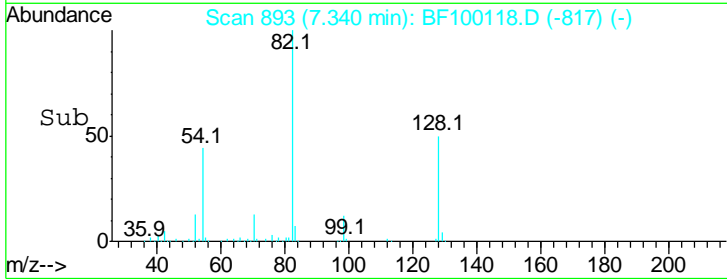
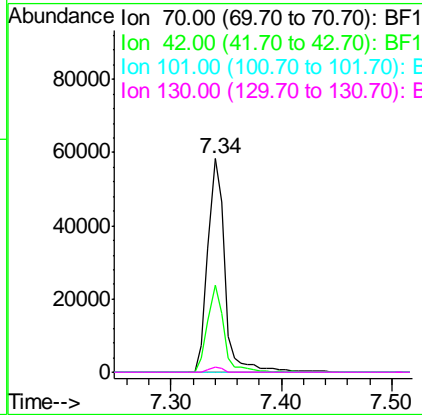
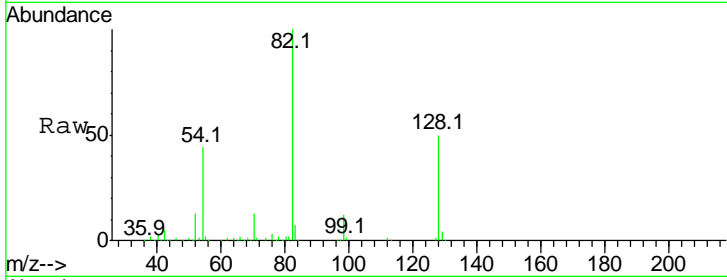




#19
 n-Nitroso-di-n-propylamine
 Concen: 16.568 ng
 RT: 7.34 min Scan# 893
 Delta R.T. 0.15 min
 Lab File: BF100118.D
 Acq: 3 Nov 2017 7:15

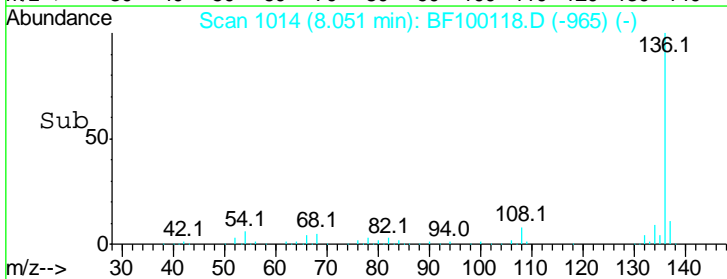
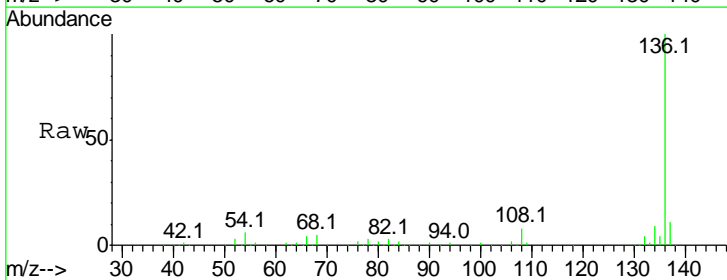
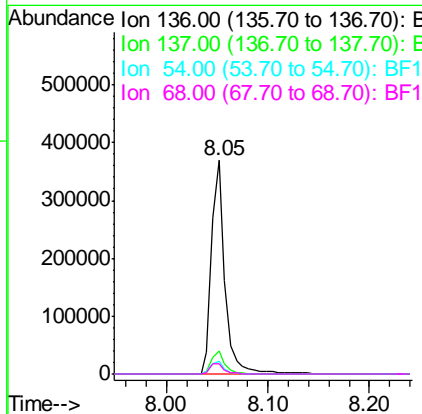
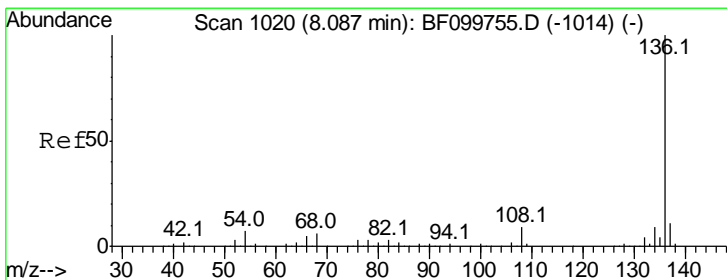
Instrument :
 BNA_F
 ClientSampled :

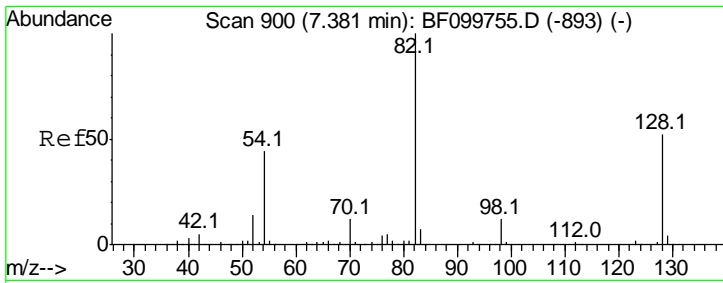
Tgt Ion	Resp	Lower	Upper
70	61209		
70	100		
42	41.0	47.5	71.3#
101	0.0	7.4	11.2#
130	2.4	16.6	25.0#



#21
 Naphthalene-d8
 Concen: 20.000 ng
 RT: 8.05 min Scan# 1014
 Delta R.T. -0.01 min
 Lab File: BF100118.D
 Acq: 3 Nov 2017 7:15

Tgt Ion	Resp	Lower	Upper
136	343729		
136	100		
137	10.9	8.9	13.3
54	6.0	6.6	9.8#
68	5.1	5.0	7.4

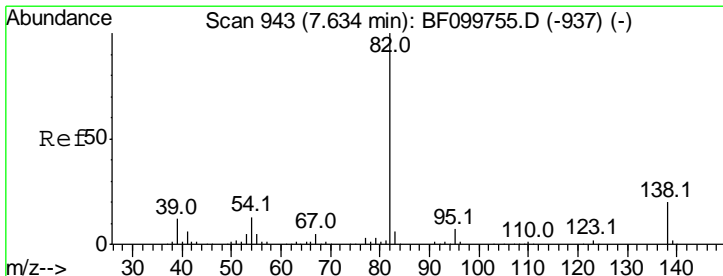
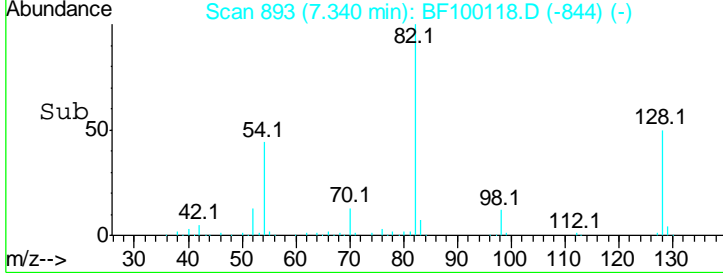
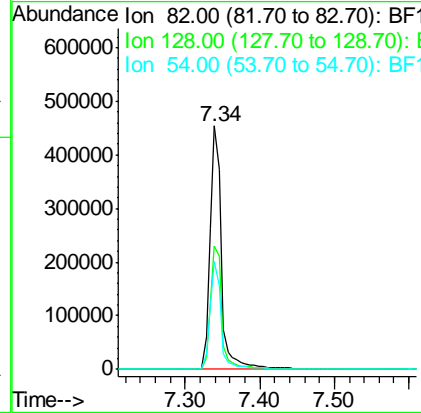
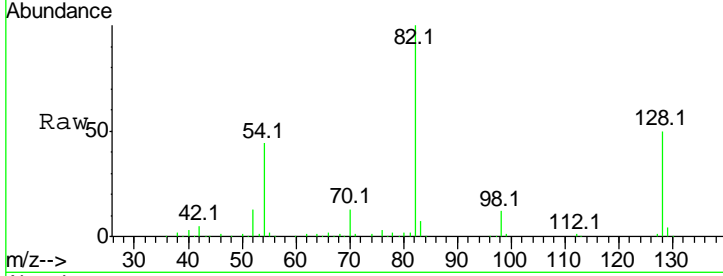




#23
 Nitrobenzene-d5
 Concen: 90.845 ng
 RT: 7.34 min Scan# 893
 Delta R.T. -0.01 min
 Lab File: BF100118.D
 Acq: 3 Nov 2017 7:15

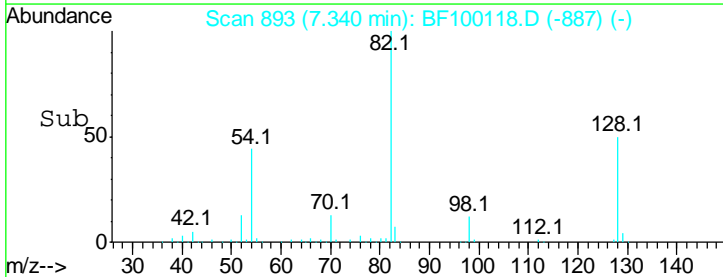
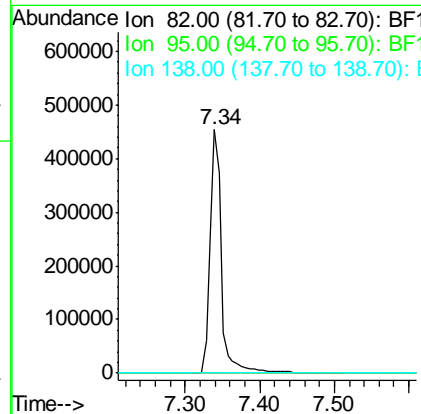
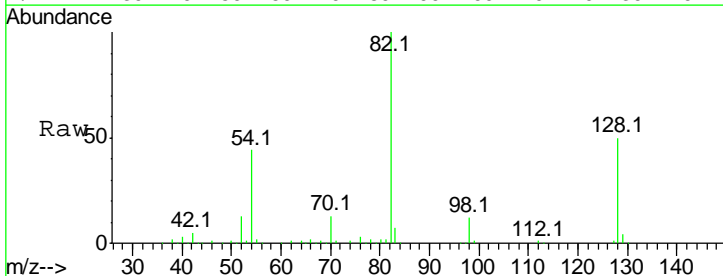
Instrument :
 BNA_F
 ClientSampled :

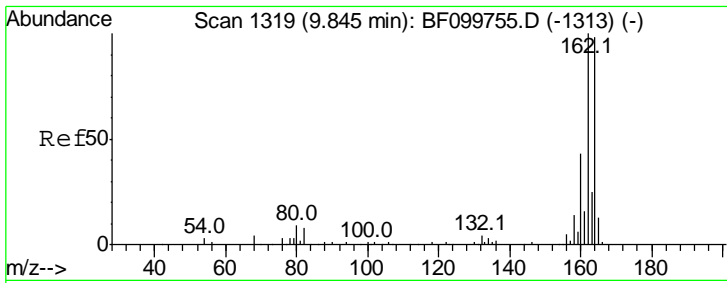
Tgt Ion	Resp	Lower	Upper
82	100		
128	50.5	36.1	54.1
54	44.1	41.4	62.2



#25
 Isophorone
 Concen: 50.064 ng
 RT: 7.34 min Scan# 893
 Delta R.T. -0.26 min
 Lab File: BF100118.D
 Acq: 3 Nov 2017 7:15

Tgt Ion	Resp	Lower	Upper
82	100		
95	0.0	5.2	7.8#
138	0.0	14.9	22.3#

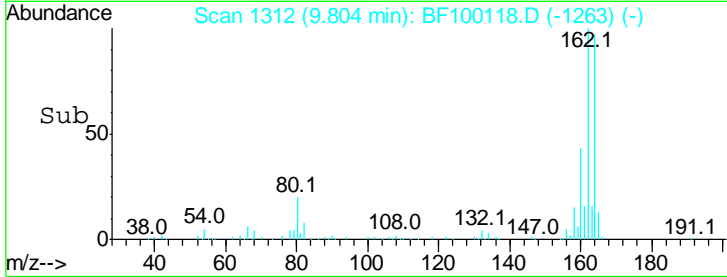
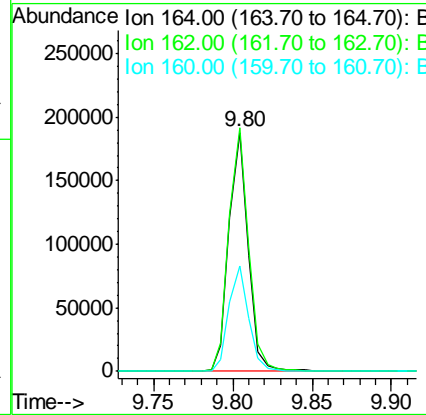
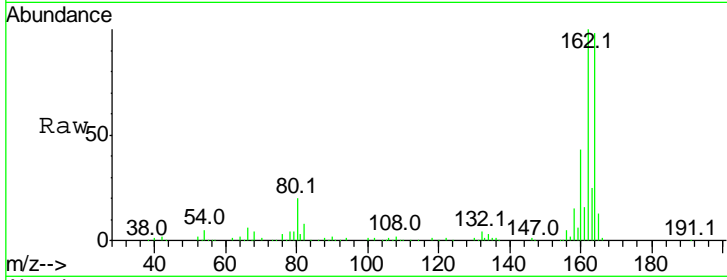




#38
 Acenaphthene-d10
 Concen: 20.000 ng
 RT: 9.80 min Scan# 1312
 Delta R.T. -0.01 min
 Lab File: BF100118.D
 Acq: 3 Nov 2017 7:15

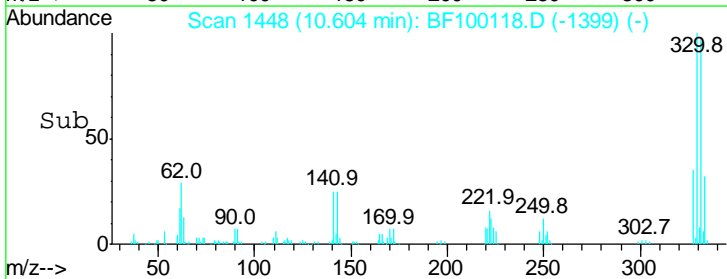
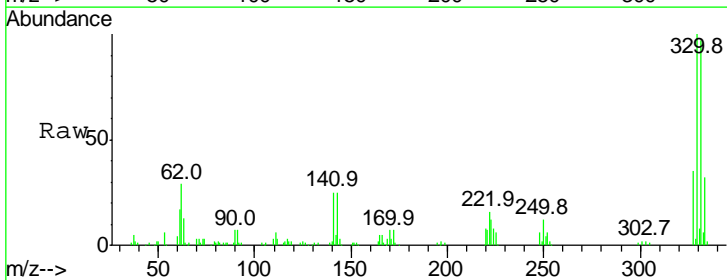
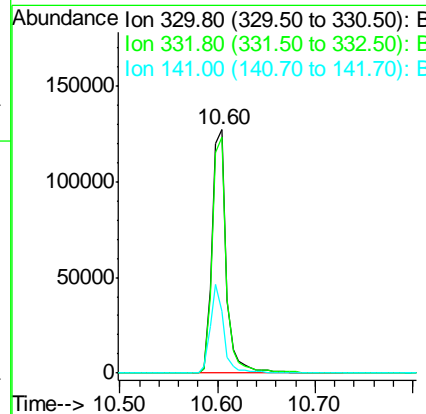
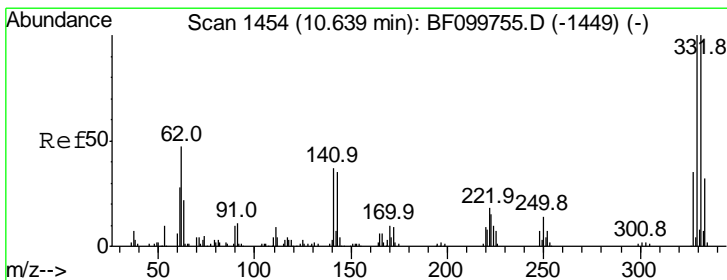
Instrument :
 BNA_F
 ClientSampled :

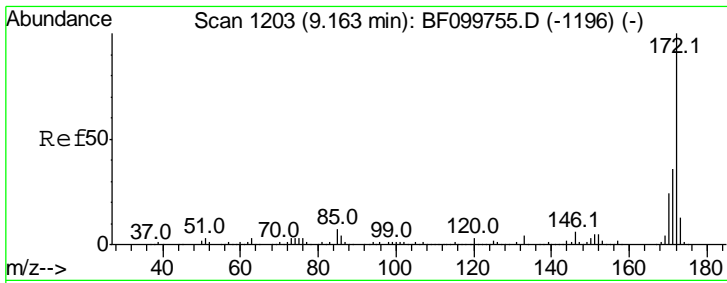
Tgt Ion	Resp	Lower	Upper
164	100		
162	102.0	86.1	129.1
160	44.3	38.3	57.5



#41
 2,4,6-Tribromophenol
 Concen: 89.640 ng
 RT: 10.60 min Scan# 1448
 Delta R.T. -0.01 min
 Lab File: BF100118.D
 Acq: 3 Nov 2017 7:15

Tgt Ion	Resp	Lower	Upper
330	100		
332	96.5	77.0	115.6
141	34.2	29.9	44.9

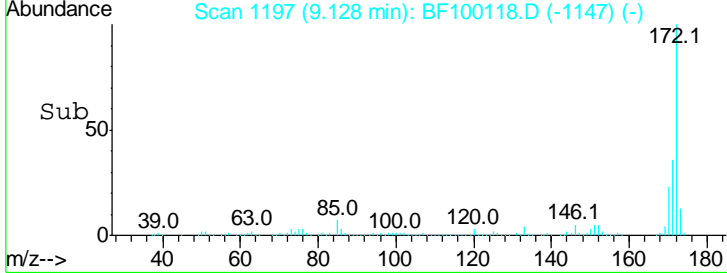
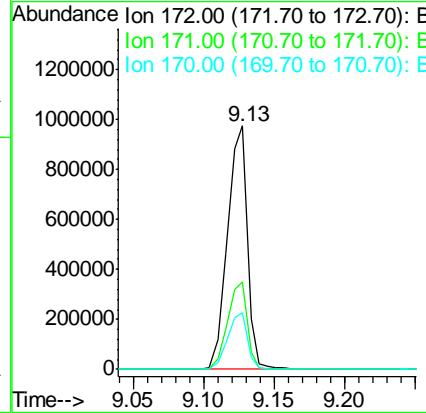
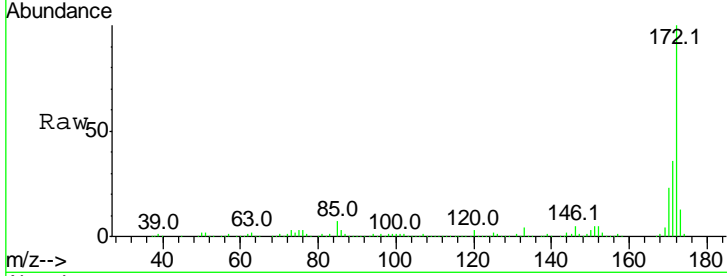




#44
 2-Fluorobiphenyl
 Concen: 93.163 ng
 RT: 9.13 min Scan# 1197
 Delta R.T. -0.01 min
 Lab File: BF100118.D
 Acq: 3 Nov 2017 7:15

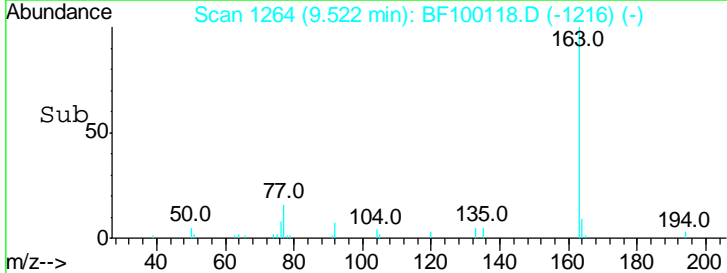
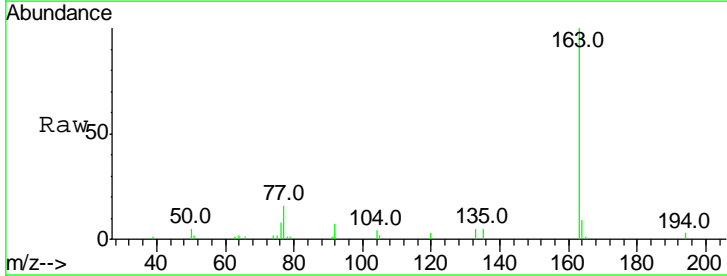
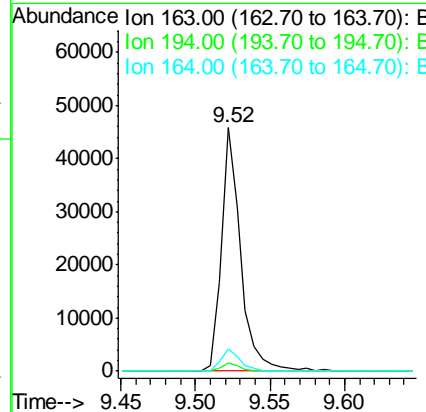
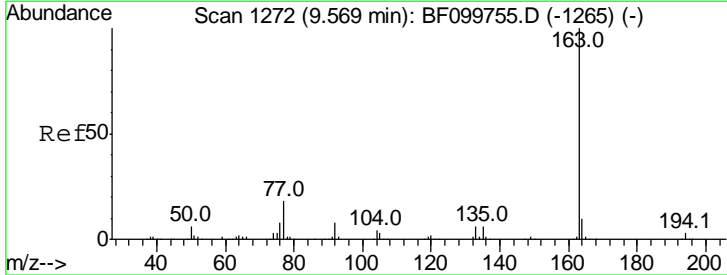
Instrument :
 BNA_F
 ClientSampled :

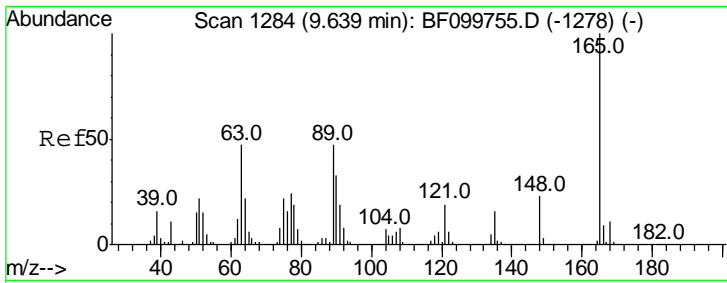
Tgt Ion	Resp	Lower	Upper
172	100		
171	35.9	29.7	44.5
170	23.4	19.6	29.4



#49
 Dimethylphthalate
 Concen: 3.307 ng
 RT: 9.52 min Scan# 1264
 Delta R.T. -0.02 min
 Lab File: BF100118.D
 Acq: 3 Nov 2017 7:15

Tgt Ion	Resp	Lower	Upper
163	100		
194	3.4	2.7	4.1
164	9.1	8.2	12.2

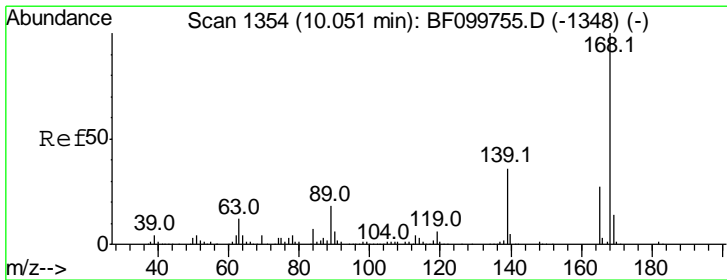
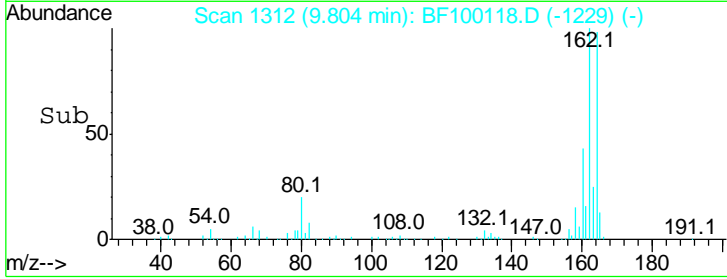
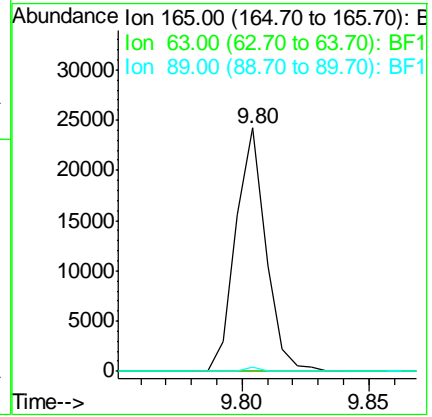
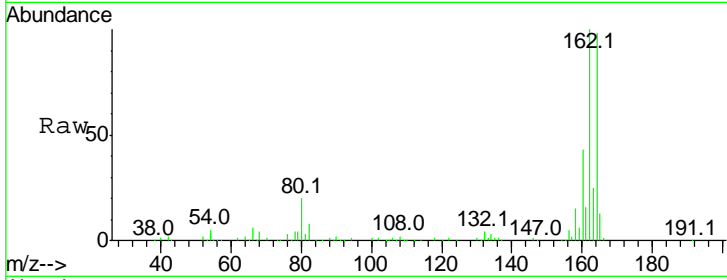




#50
 2,6-Dinitrotoluene
 Concen: 7.559 ng
 RT: 9.80 min Scan# 1312
 Delta R.T. 0.19 min
 Lab File: BF100118.D
 Acq: 3 Nov 2017 7:15

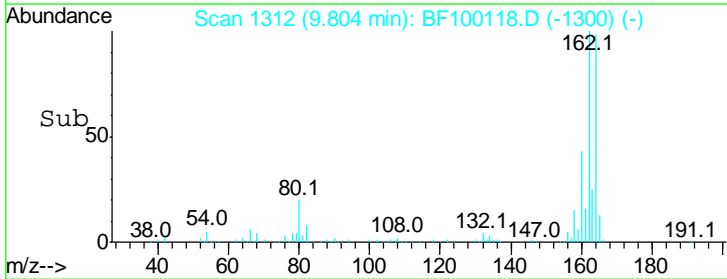
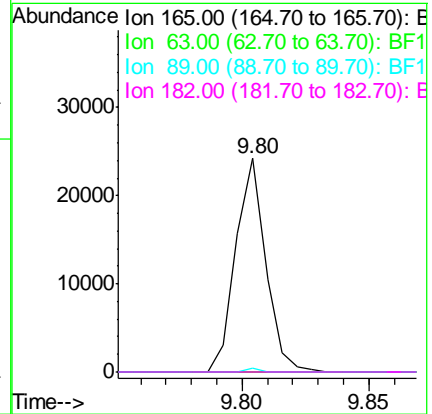
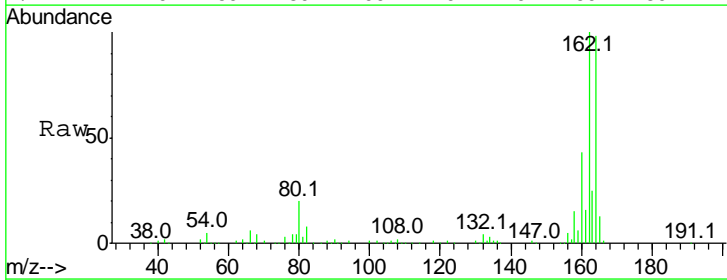
Instrument :
 BNA_F
 ClientSampled :

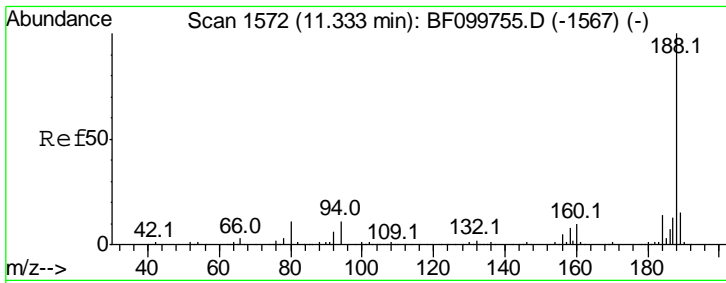
Tgt Ion	Ratio	Lower	Upper
165	100		
63	0.0	44.7	67.1#
89	1.5	44.0	66.0#



#56
 2,4-Dinitrotoluene
 Concen: 6.276 ng
 RT: 9.80 min Scan# 1312
 Delta R.T. -0.23 min
 Lab File: BF100118.D
 Acq: 3 Nov 2017 7:15

Tgt Ion	Ratio	Lower	Upper
165	100		
63	0.0	36.4	54.6#
89	1.5	57.8	86.6#
182	0.0	1.6	2.4#

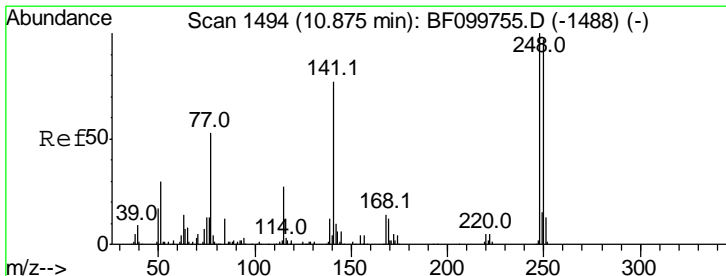
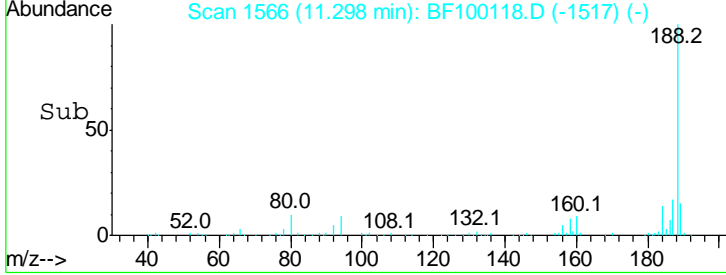
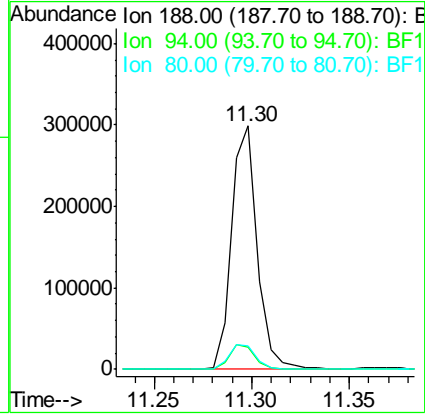
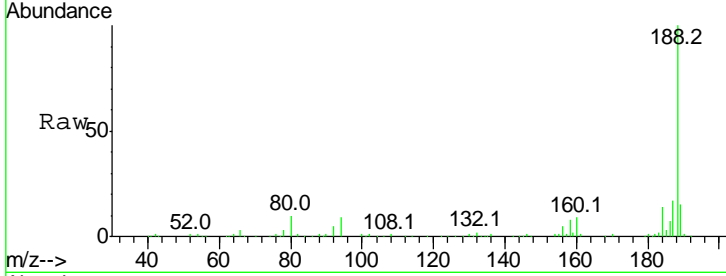




#63
 Phenanthrene-d10
 Concen: 20.000 ng
 RT: 11.30 min Scan# 1566
 Delta R.T. -0.01 min
 Lab File: BF100118.D
 Acq: 3 Nov 2017 7:15

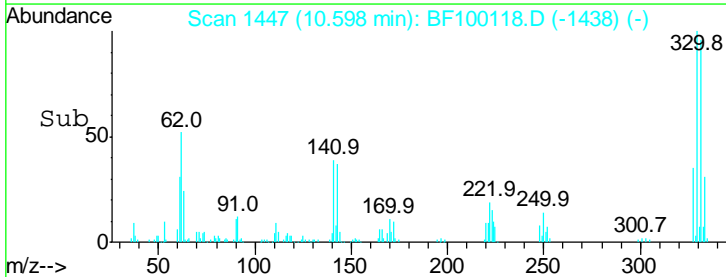
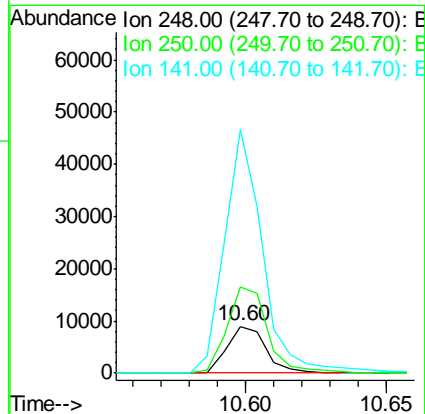
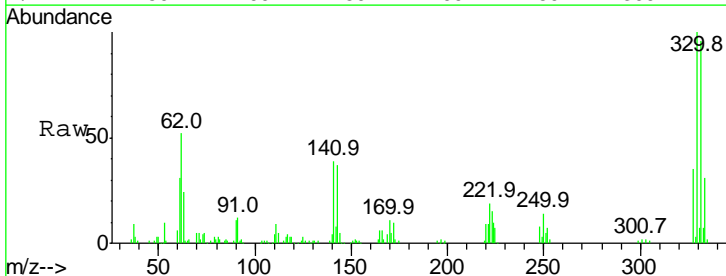
Instrument :
 BNA_F
 ClientSampled :

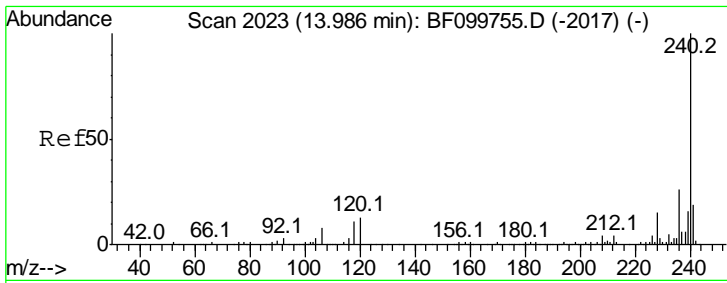
Tgt Ion	Resp	Lower	Upper
188	100		
94	9.1	8.5	12.7
80	9.8	9.2	13.8



#66
 4-Bromophenyl-phenylether
 Concen: 2.964 ng
 RT: 10.60 min Scan# 1447
 Delta R.T. -0.25 min
 Lab File: BF100118.D
 Acq: 3 Nov 2017 7:15

Tgt Ion	Resp	Lower	Upper
248	100		
250	183.3	76.9	115.3#
141	517.0	74.4	111.6#



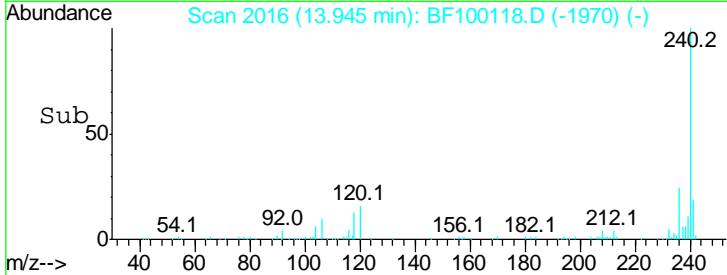
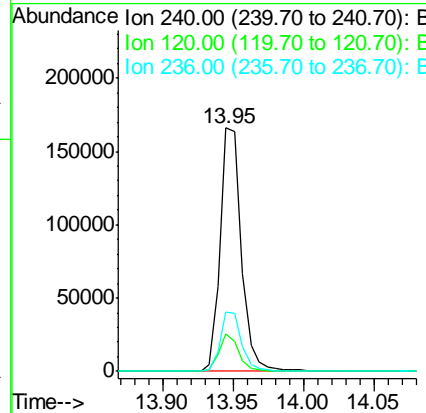
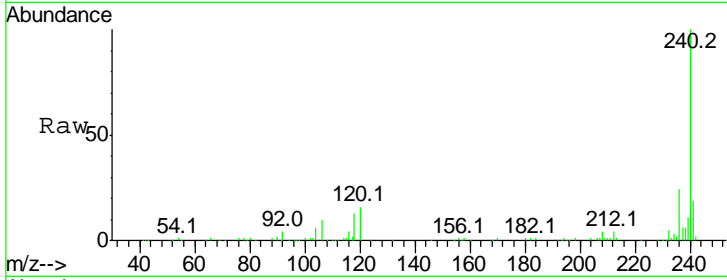


#75
 Chrysene-d12
 Concen: 20.000 ng
 RT: 13.95 min Scan# 2016
 Delta R.T. -0.03 min
 Lab File: BF100118.D
 Acq: 3 Nov 2017 7:15

Instrument :
 BNA_F
 ClientSampled :

Tgt Ion: 240 Resp: 173803

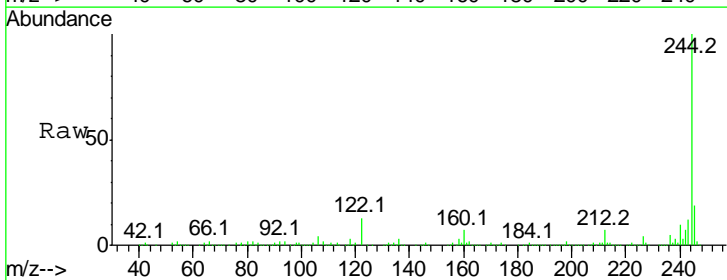
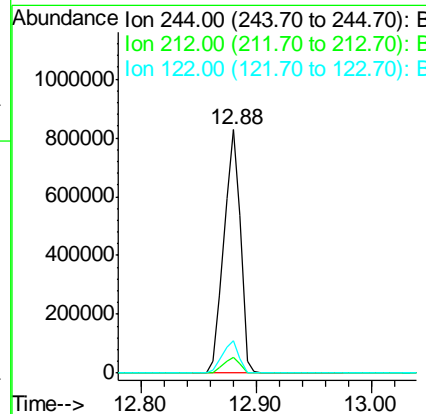
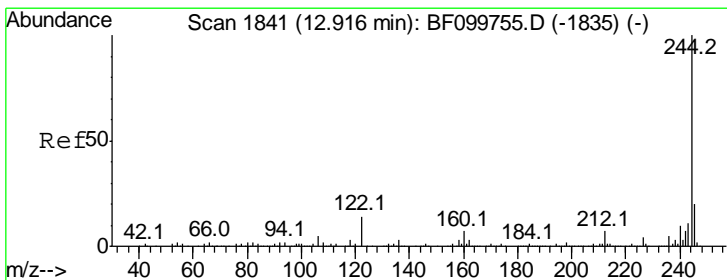
Ion	Ratio	Lower	Upper
240	100		
120	15.6	9.5	14.3#
236	24.4	20.7	31.1

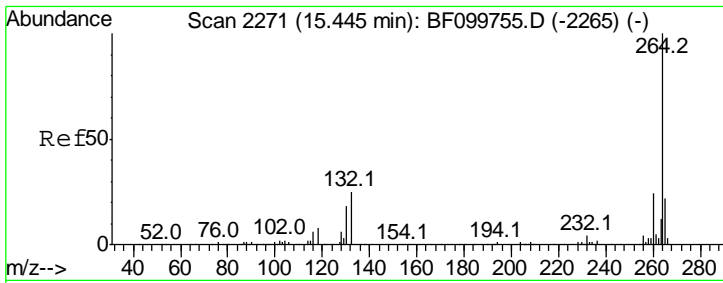


#78
 Terphenyl-d14
 Concen: 102.850 ng
 RT: 12.88 min Scan# 1835
 Delta R.T. -0.02 min
 Lab File: BF100118.D
 Acq: 3 Nov 2017 7:15

Tgt Ion: 244 Resp: 817967

Ion	Ratio	Lower	Upper
244	100		
212	6.7	5.4	8.0
122	13.5	11.0	16.4





#86
 Perylene-d12
 Concen: 20.000 ng
 RT: 15.41 min Scan# 2265
 Delta R.T. -0.05 min
 Lab File: BF100118.D
 Acq: 3 Nov 2017 7:15

Instrument :
 BNA_F
 ClientSampled :

Tot Ion: 264 Resp: 139647

Ion	Ratio	Lower	Upper
264	100		
260	22.7	19.2	28.8
265	21.4	17.5	26.3

