

Data Path : \\74.0.250.170\SVOASRV\HPCHEM1\BNA F\DATA\BF110217\  
 Data File : BF100124.D  
 Acq On : 3 Nov 2017 9:57  
 Operator : SJ/JU  
 Sample : I6273-07  
 Misc :  
 ALS Vial : 43 Sample Multiplier: 1

Instrument :  
 BNA\_F  
 ClientSampleId :

Quant Time: Nov 03 11:53:32 2017  
 Quant Method : Z:\HPCHEM1\BNA F\METHODS\8270-BF102317.M  
 Quant Title : ASP BNA STANDARDS FOR 5 POINT CALIBRATION  
 QLast Update : Wed Nov 01 18:13:08 2017  
 Response via : Initial Calibration

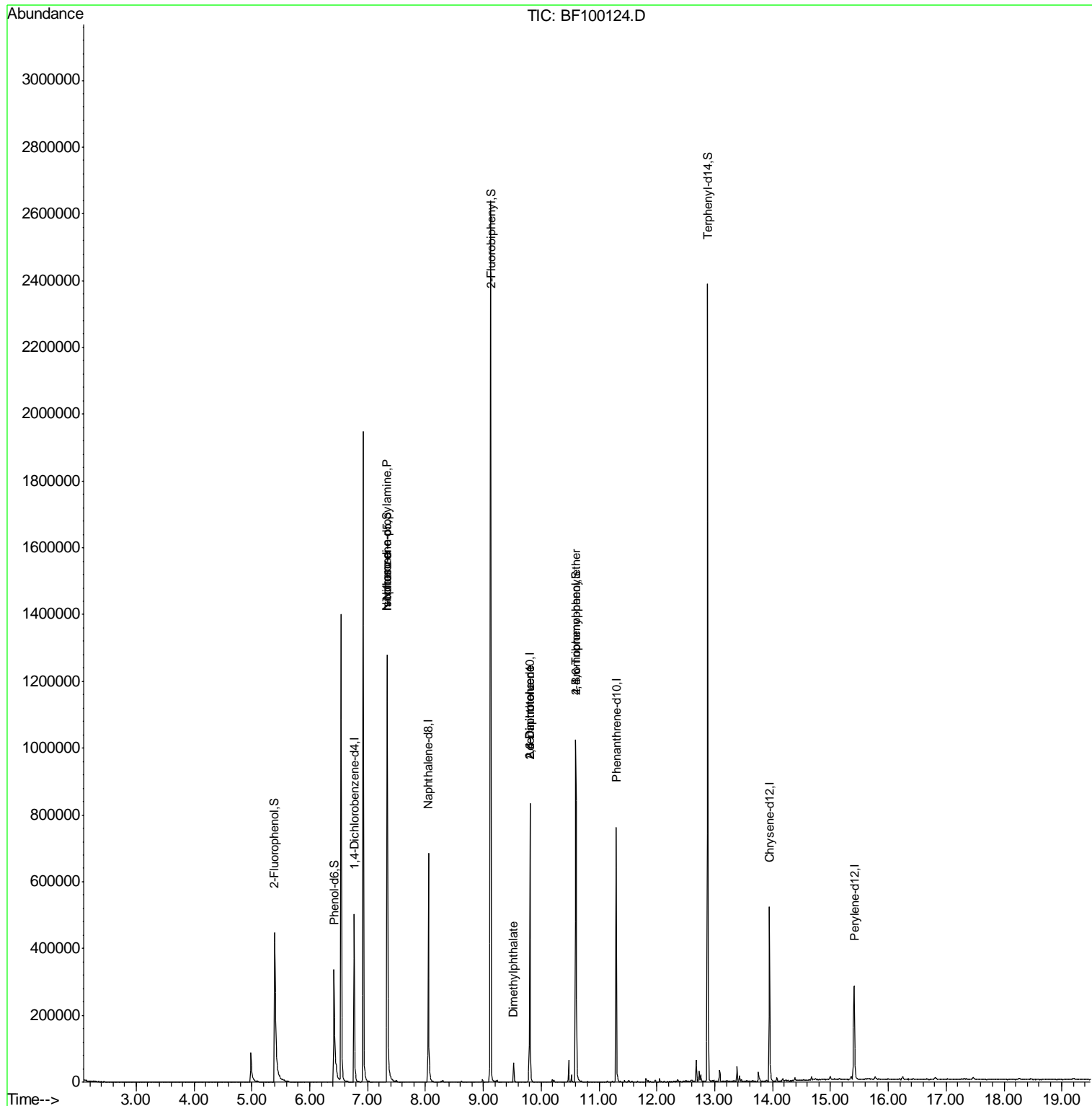
Internal Standards	R.T.	QIon	Response	Conc	Units	Dev(Min)
1) 1,4-Dichlorobenzene-d4	6.77	152	88987	20.00	ng	0.00
21) Naphthalene-d8	8.05	136	362160	20.00	ng	-0.01
38) Acenaphthene-d10	9.80	164	166331	20.00	ng	-0.01
63) Phenanthrene-d10	11.30	188	293763	20.00	ng	-0.01
75) Chrysene-d12	13.94	240	192843	20.00	ng	-0.03
86) Perylene-d12	15.41	264	144906	20.00	ng	-0.05
System Monitoring Compounds						
5) 2-Fluorophenol	5.39	112	259107	45.71	ng	0.00
7) Phenol-d6	6.42	99	221872	33.01	ng	-0.01
23) Nitrobenzene-d5	7.34	82	513772	91.33	ng	-0.01
41) 2,4,6-Tribromophenol	10.60	330	136815	90.26	ng	-0.01
44) 2-Fluorobiphenyl	9.13	172	999423	92.70	ng	0.00
78) Terphenyl-d14	12.88	244	915728	103.77	ng	-0.02
Target Compounds						
19) n-Nitroso-di-n-propylamine	7.34	70	63817	16.203	ng	# 71
25) Isophorone	7.34	82	513772	50.333	ng	# 64
49) Dimethylphthalate	9.52	163	32596	2.475	ng	100
50) 2,6-Dinitrotoluene	9.80	165	20711	7.479	ng	# 24
56) 2,4-Dinitrotoluene	9.80	165	20711	6.211	ng	# 22
66) 4-Bromophenyl-phenylether	10.60	248	8706	2.815	ng	# 1

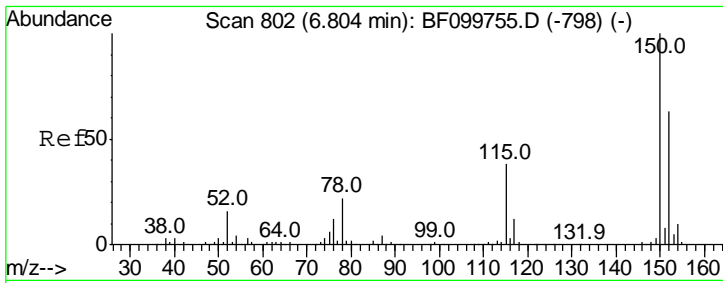
(#) = qualifier out of range (m) = manual integration (+) = signals summed

Data Path : \\74.0.250.170\SVOASRV\HPCHEM1\BNA F\DATA\BF110217\  
 Data File : BF100124.D  
 Acq On : 3 Nov 2017 9:57  
 Operator : SJ/JU  
 Sample : I6273-07  
 Misc :  
 ALS Vial : 43 Sample Multiplier: 1

Instrument :  
 BNA\_F  
 ClientSampled :

Quant Time: Nov 03 11:53:32 2017  
 Quant Method : Z:\HPCHEM1\BNA F\METHODS\8270-BF102317.M  
 Quant Title : ASP BNA STANDARDS FOR 5 POINT CALIBRATION  
 QLast Update : Wed Nov 01 18:13:08 2017  
 Response via : Initial Calibration

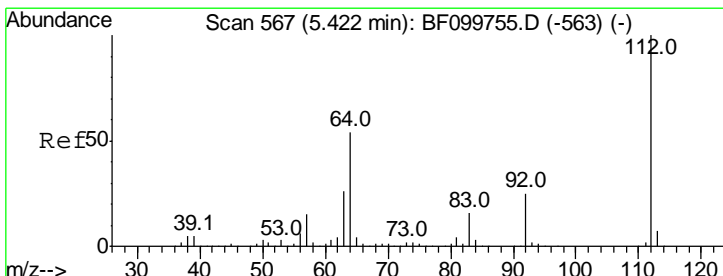
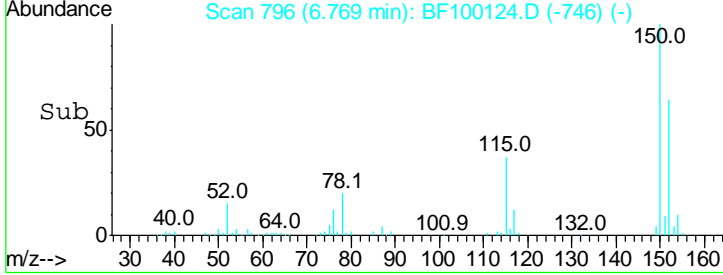
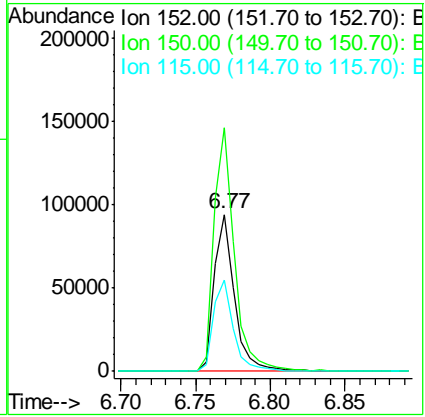
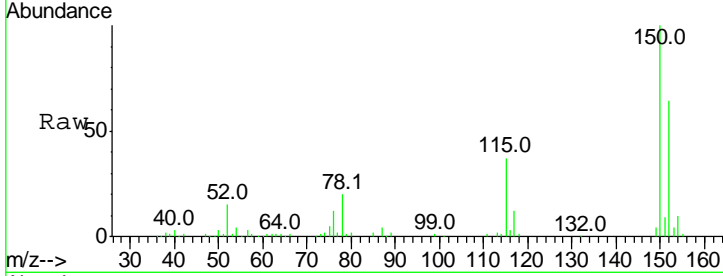




#1  
 1,4-Dichlorobenzene-d4  
 Concen: 20.000 ng  
 RT: 6.77 min Scan# 796  
 Delta R.T. -0.01 min  
 Lab File: BF100124.D  
 Acq: 3 Nov 2017 9:57

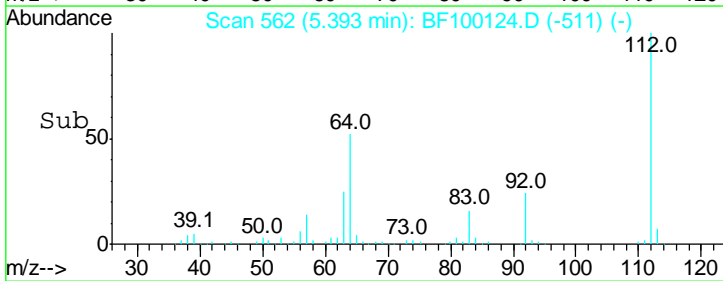
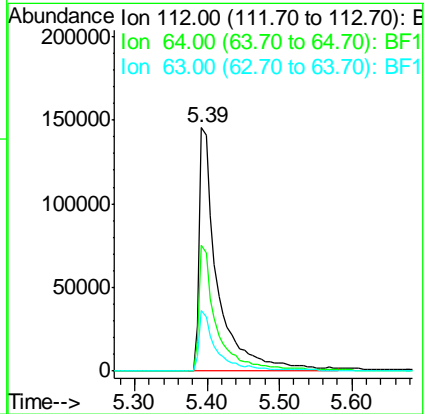
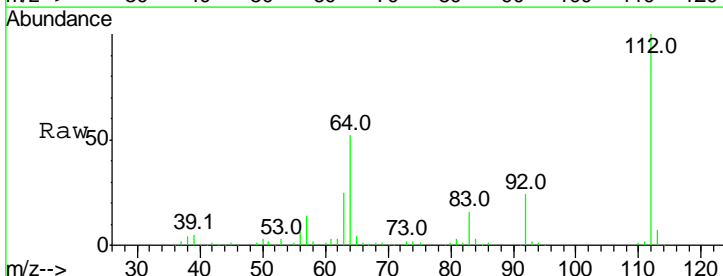
Instrument :  
 BNA\_F  
 ClientSampled :

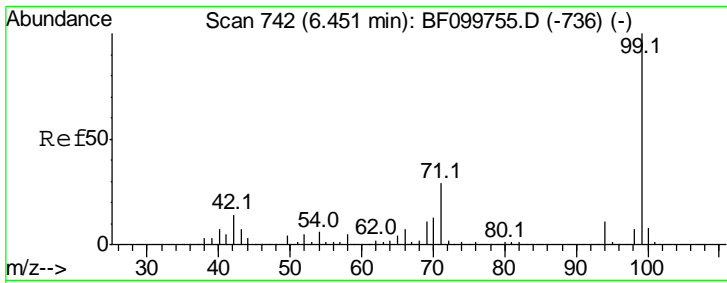
Tgt Ion	Resp	Lower	Upper
152	100		
150	155.5	124.6	186.8
115	58.2	50.1	75.1



#5  
 2-Fluorophenol  
 Concen: 45.713 ng  
 RT: 5.39 min Scan# 562  
 Delta R.T. 0.00 min  
 Lab File: BF100124.D  
 Acq: 3 Nov 2017 9:57

Tgt Ion	Resp	Lower	Upper
112	100		
64	51.9	47.9	71.9
63	24.9	23.7	35.5

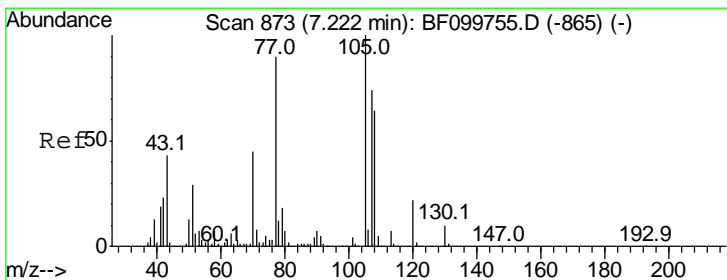
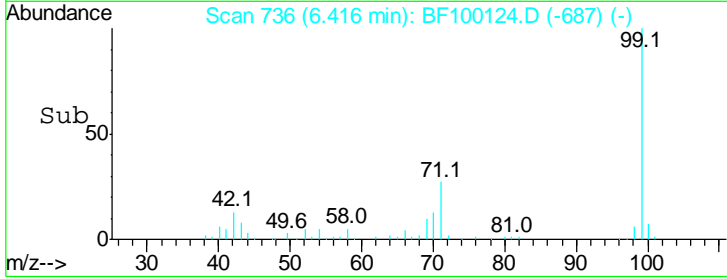
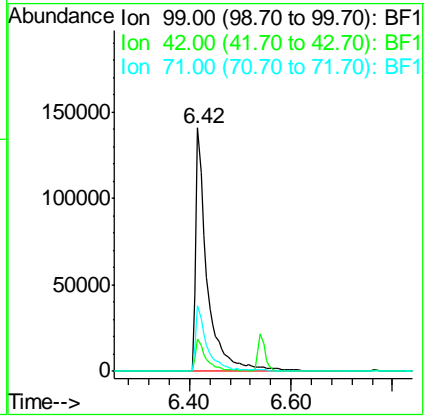
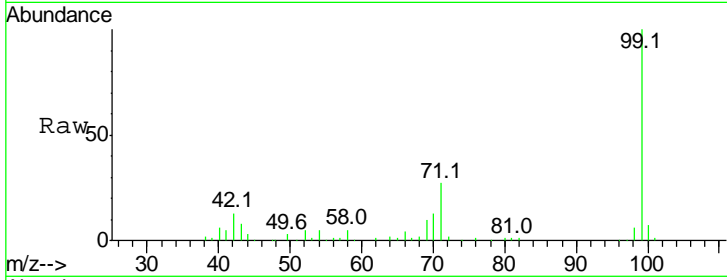




#7  
 Phenol-d6  
 Concen: 33.013 ng  
 RT: 6.42 min Scan# 736  
 Delta R.T. -0.01 min  
 Lab File: BF100124.D  
 Acq: 3 Nov 2017 9:57

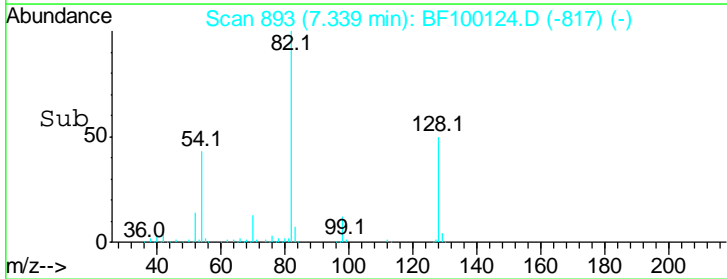
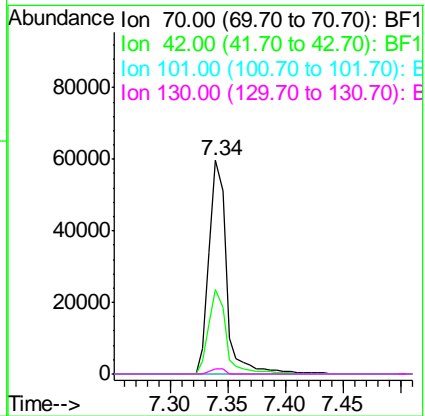
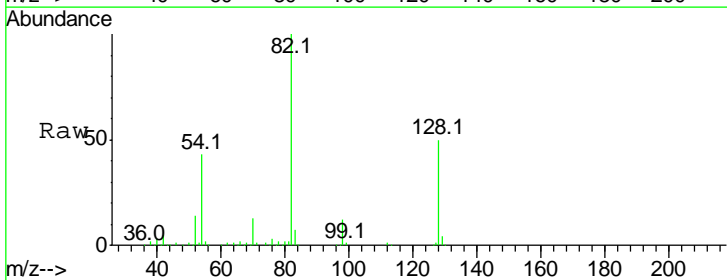
Instrument :  
 BNA\_F  
 ClientSampled :

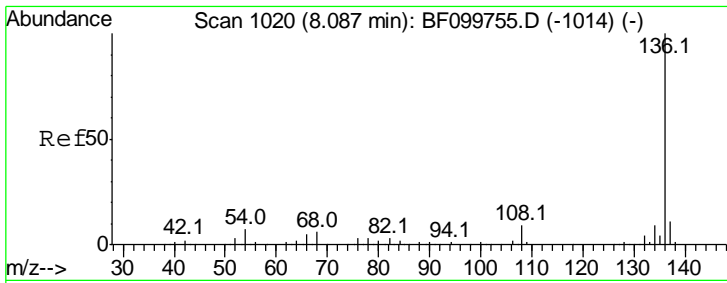
Tgt Ion	Resp	Lower	Upper
99	221872		
99	100		
42	13.5	14.5	21.7#
71	26.9	25.4	38.0



#19  
 n-Nitroso-di-n-propylamine  
 Concen: 16.203 ng  
 RT: 7.34 min Scan# 893  
 Delta R.T. 0.15 min  
 Lab File: BF100124.D  
 Acq: 3 Nov 2017 9:57

Tgt Ion	Resp	Lower	Upper
70	63817		
70	100		
42	39.4	47.5	71.3#
101	0.0	7.4	11.2#
130	2.5	16.6	25.0#



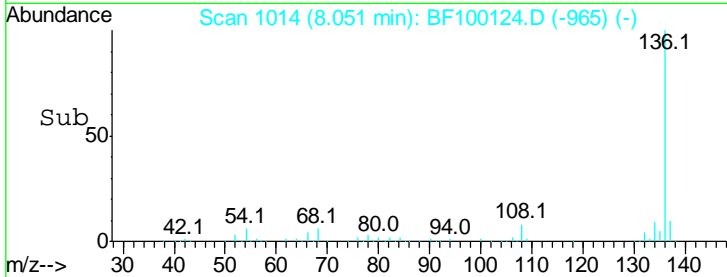
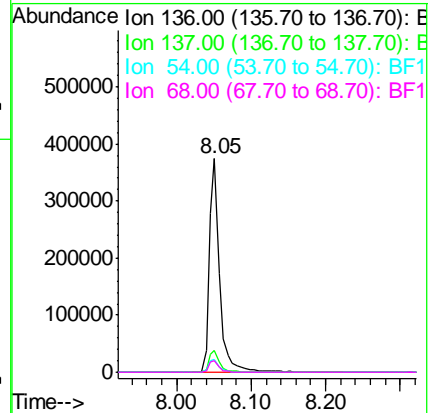
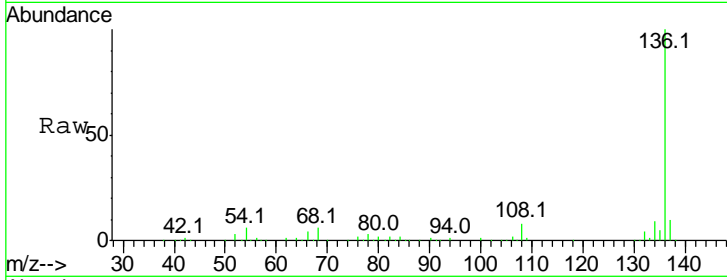


#21  
 Naphthalene-d8  
 Concen: 20.000 ng  
 RT: 8.05 min Scan# 1014  
 Delta R.T. -0.01 min  
 Lab File: BF100124.D  
 Acq: 3 Nov 2017 9:57

Instrument :  
 BNA\_F  
 ClientSampled :

Tgt Ion: 136 Resp: 362160

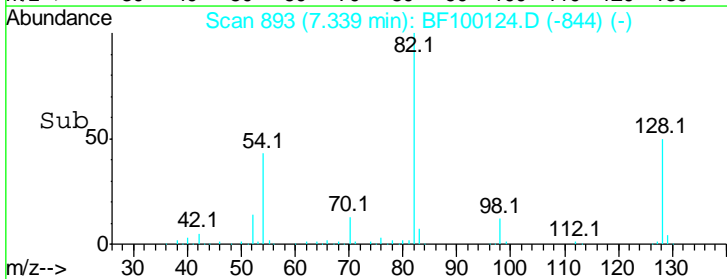
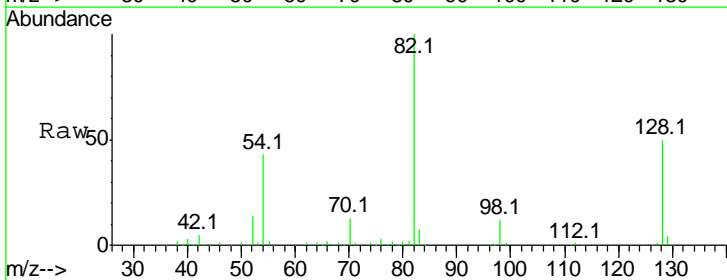
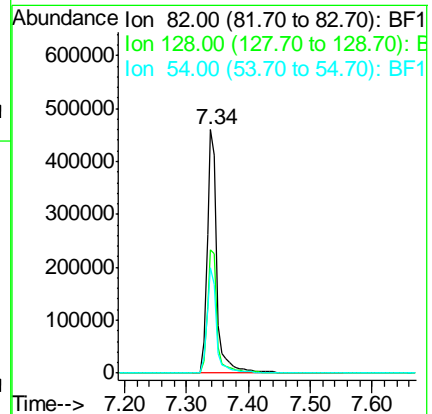
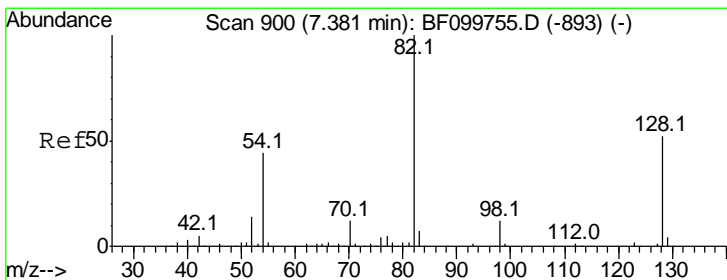
Ion	Ratio	Lower	Upper
136	100		
137	10.5	8.9	13.3
54	6.0	6.6	9.8#
68	5.7	5.0	7.4

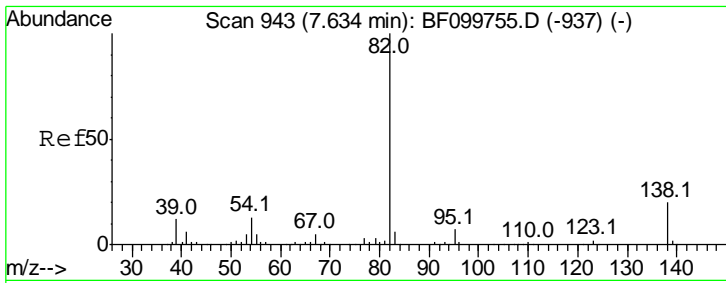


#23  
 Nitrobenzene-d5  
 Concen: 91.332 ng  
 RT: 7.34 min Scan# 893  
 Delta R.T. -0.01 min  
 Lab File: BF100124.D  
 Acq: 3 Nov 2017 9:57

Tgt Ion: 82 Resp: 513772

Ion	Ratio	Lower	Upper
82	100		
128	50.4	36.1	54.1
54	43.4	41.4	62.2

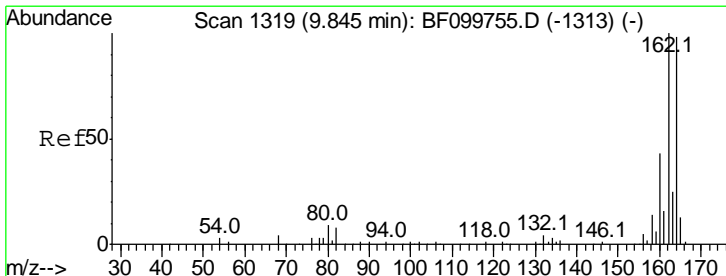
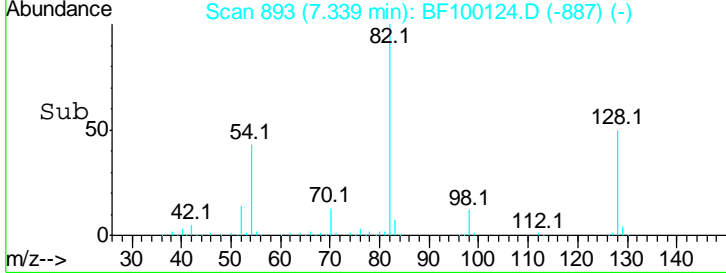
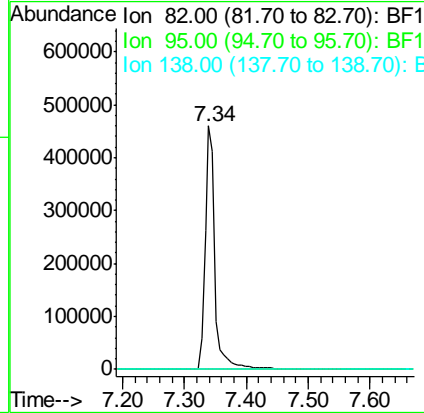
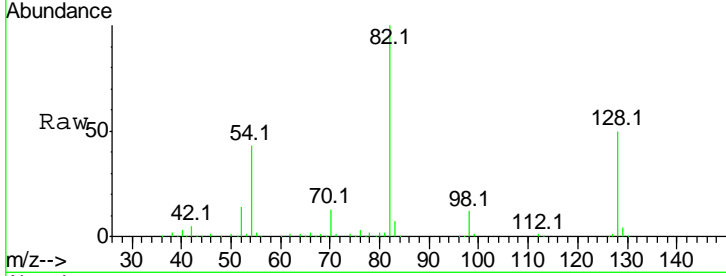




#25  
 Isophorone  
 Concen: 50.333 ng  
 RT: 7.34 min Scan# 893  
 Delta R.T. -0.26 min  
 Lab File: BF100124.D  
 Acq: 3 Nov 2017 9:57

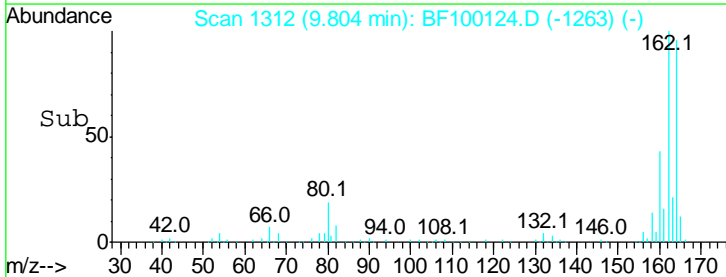
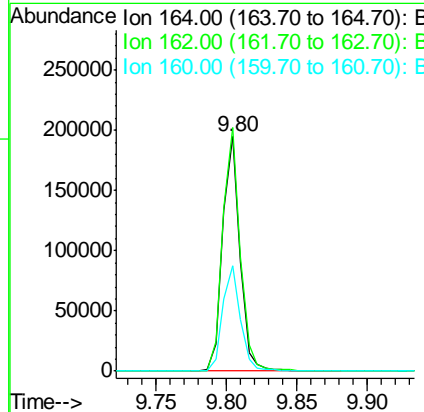
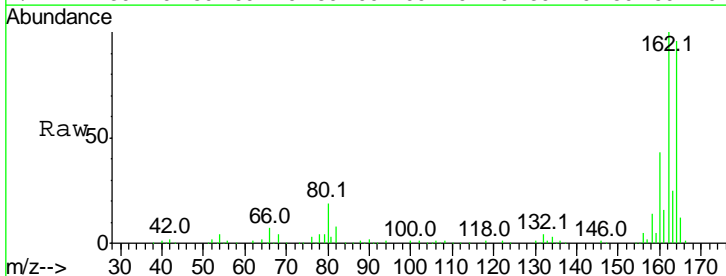
Instrument :  
 BNA\_F  
 ClientSampled :

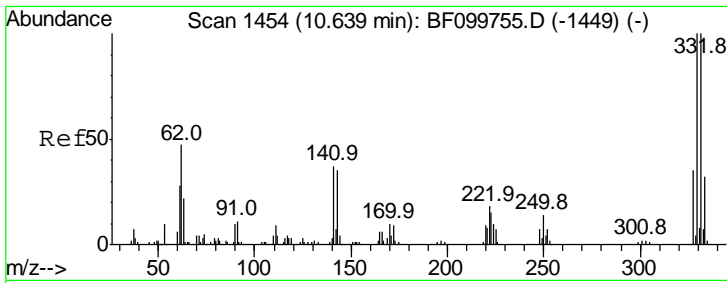
Tgt Ion	Resp	Lower	Upper
82	100		
95	0.0	5.2	7.8#
138	0.0	14.9	22.3#



#38  
 Acenaphthene-d10  
 Concen: 20.000 ng  
 RT: 9.80 min Scan# 1312  
 Delta R.T. -0.01 min  
 Lab File: BF100124.D  
 Acq: 3 Nov 2017 9:57

Tgt Ion	Resp	Lower	Upper
164	100		
162	104.0	86.1	129.1
160	45.0	38.3	57.5

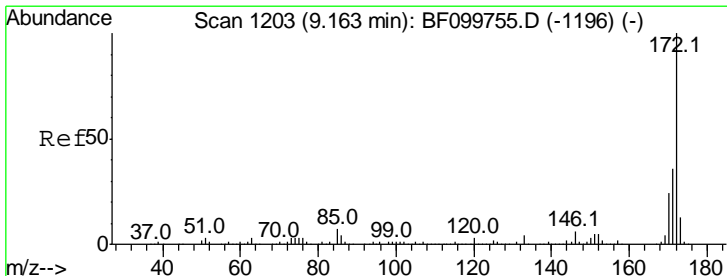
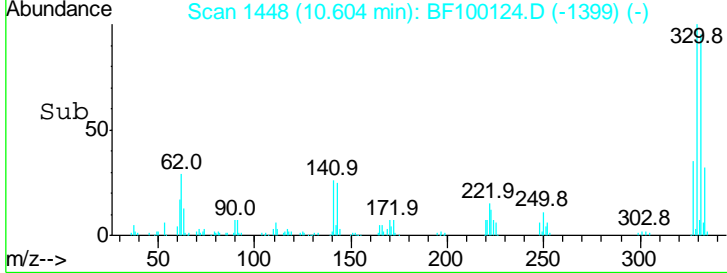
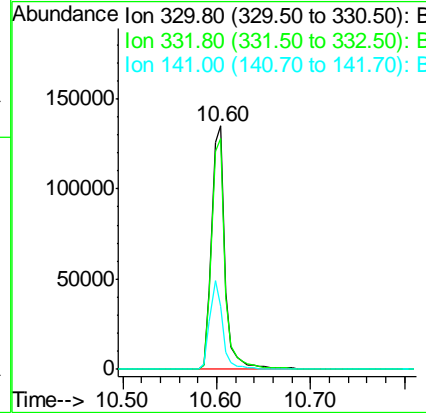
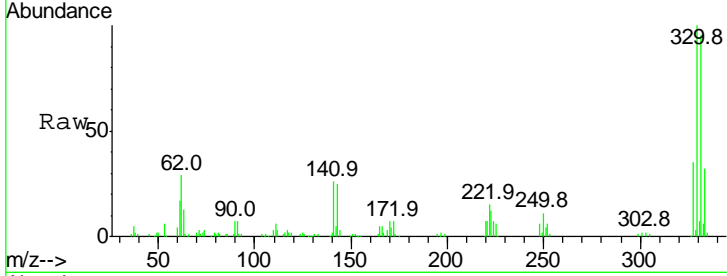




#41  
 2,4,6-Tribromophenol  
 Concen: 90.259 ng  
 RT: 10.60 min Scan# 1448  
 Delta R.T. -0.01 min  
 Lab File: BF100124.D  
 Acq: 3 Nov 2017 9:57

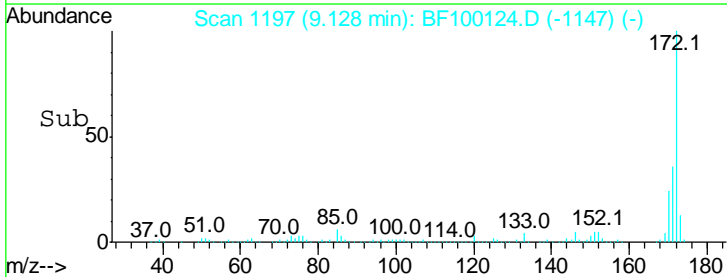
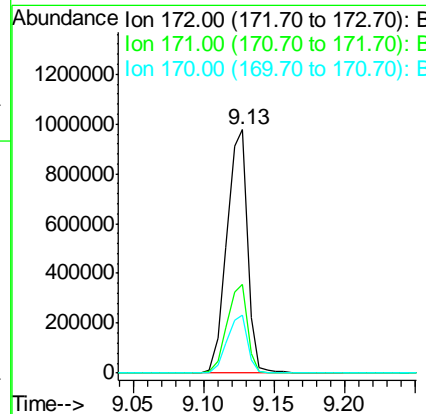
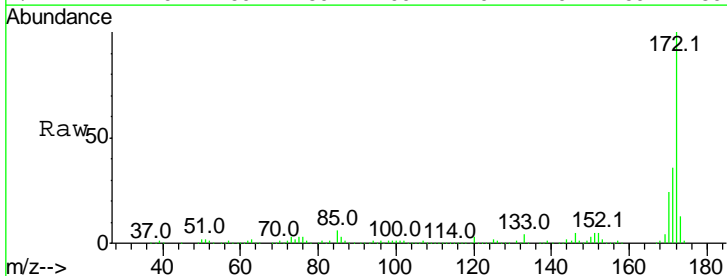
Instrument :  
 BNA\_F  
 ClientSampled :

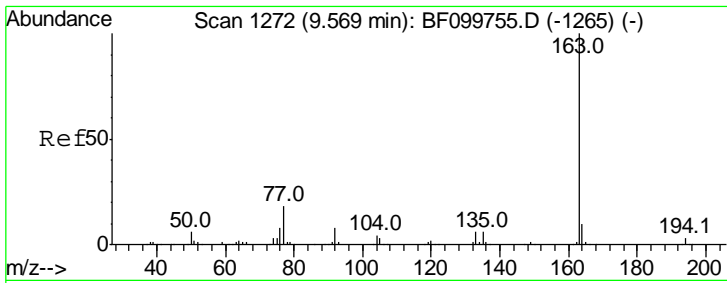
Tgt Ion	Resp	Lower	Upper
330	100		
332	95.3	77.0	115.6
141	34.4	29.9	44.9



#44  
 2-Fluorobiphenyl  
 Concen: 92.704 ng  
 RT: 9.13 min Scan# 1197  
 Delta R.T. -0.01 min  
 Lab File: BF100124.D  
 Acq: 3 Nov 2017 9:57

Tgt Ion	Resp	Lower	Upper
172	100		
171	36.2	29.7	44.5
170	23.8	19.6	29.4

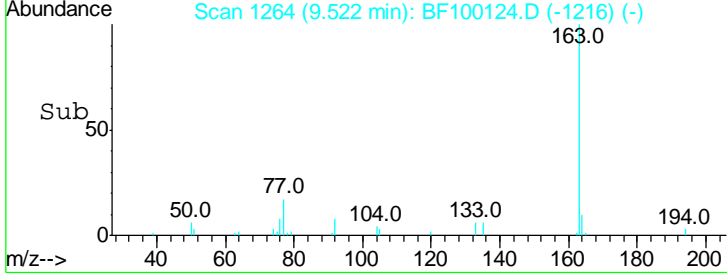
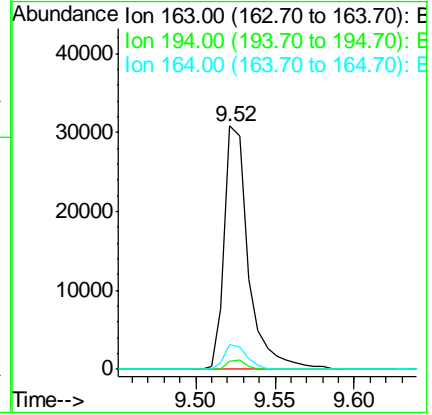
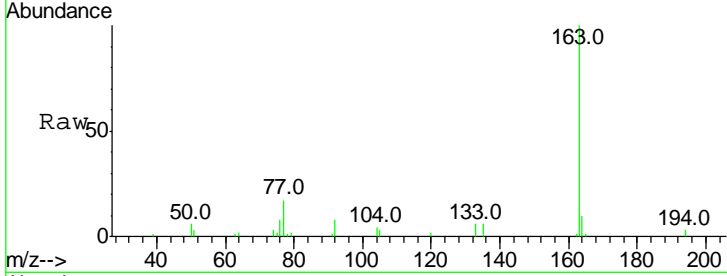




#49  
 Dimethylphthalate  
 Concen: 2.475 ng  
 RT: 9.52 min Scan# 1264  
 Delta R.T. -0.02 min  
 Lab File: BF100124.D  
 Acq: 3 Nov 2017 9:57

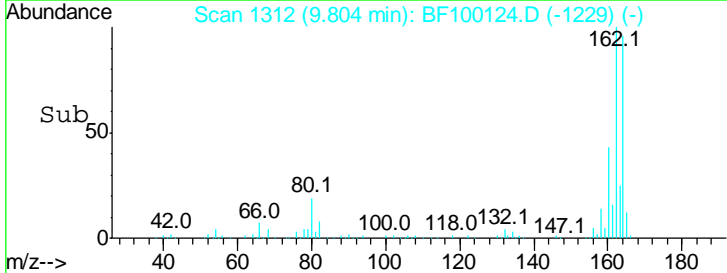
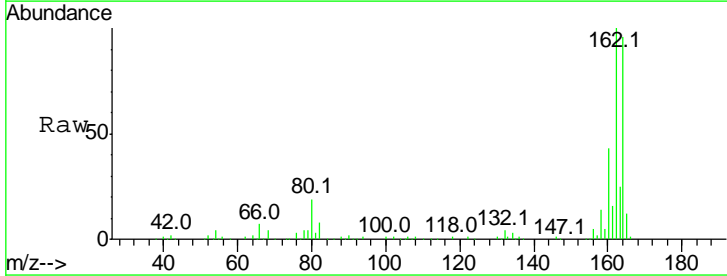
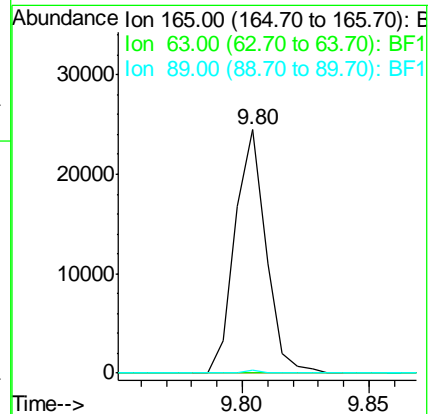
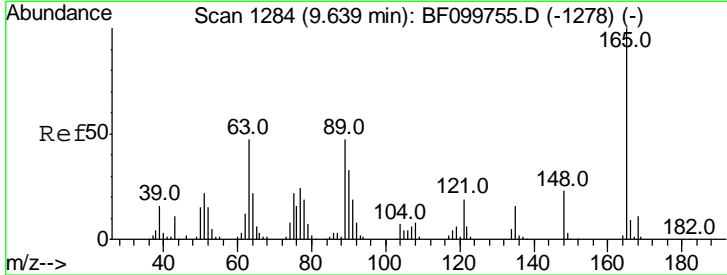
Instrument :  
 BNA\_F  
 ClientSampled :

Tgt Ion	Resp	Lower	Upper
163	100		
194	3.4	2.7	4.1
164	10.1	8.2	12.2

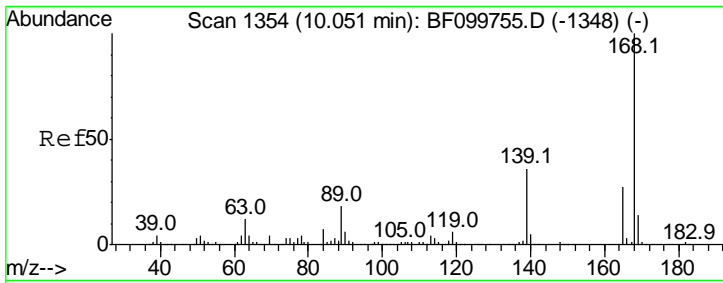


#50  
 2,6-Dinitrotoluene  
 Concen: 7.479 ng  
 RT: 9.80 min Scan# 1312  
 Delta R.T. 0.19 min  
 Lab File: BF100124.D  
 Acq: 3 Nov 2017 9:57

Tgt Ion	Resp	Lower	Upper
165	100		
63	0.0	44.7	67.1#
89	1.2	44.0	66.0#



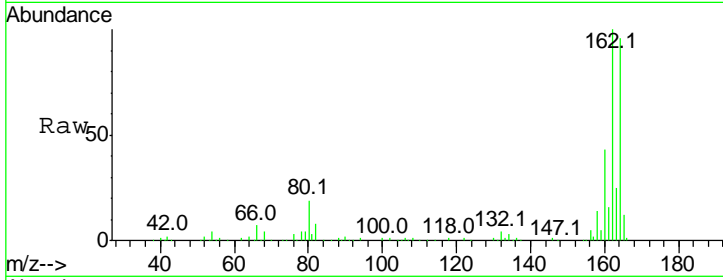




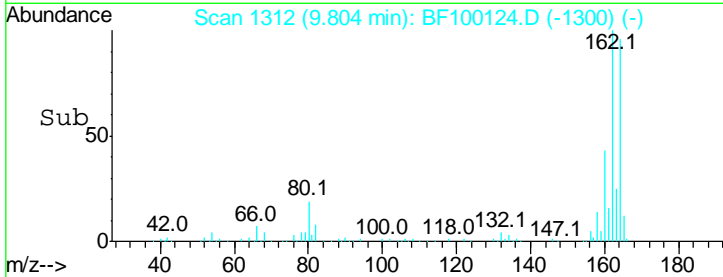
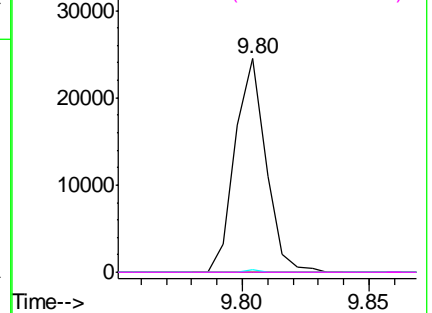
#56  
 2,4-Dinitrotoluene  
 Concen: 6.211 ng  
 RT: 9.80 min Scan# 1312  
 Delta R.T. -0.23 min  
 Lab File: BF100124.D  
 Acq: 3 Nov 2017 9:57

Instrument :  
 BNA\_F  
 ClientSampled :

Tgt Ion	Resp	Lower	Upper
165	100		
63	0.0	36.4	54.6#
89	1.2	57.8	86.6#
182	0.0	1.6	2.4#

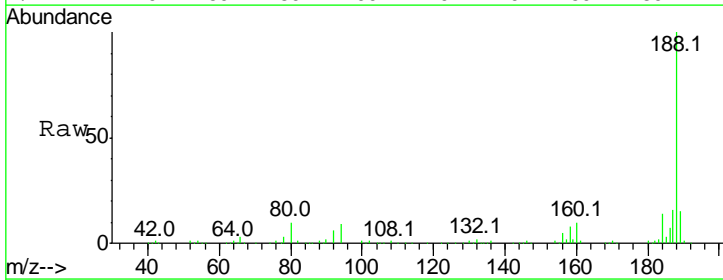


Abundance Ion 165.00 (164.70 to 165.70): E  
 Ion 63.00 (62.70 to 63.70): BF1  
 Ion 89.00 (88.70 to 89.70): BF1  
 Ion 182.00 (181.70 to 182.70): E

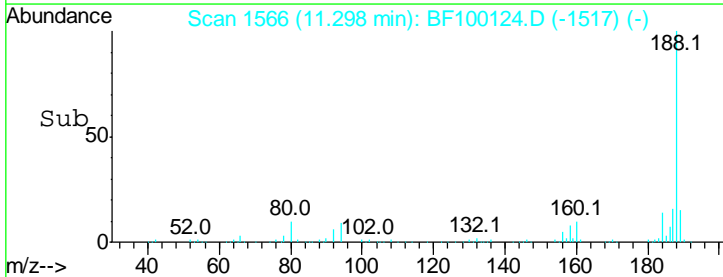
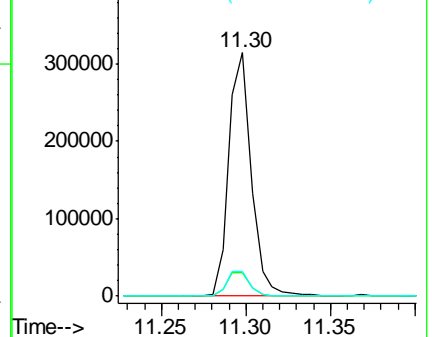


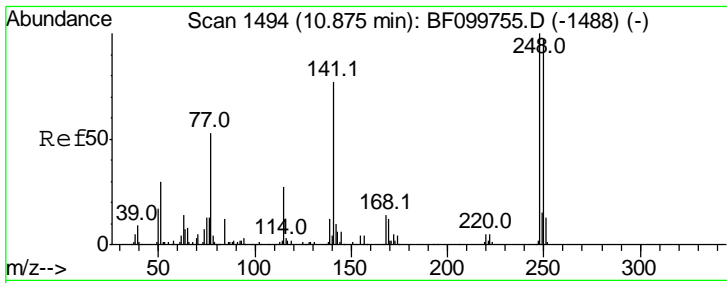
#63  
 Phenanthrene-d10  
 Concen: 20.000 ng  
 RT: 11.30 min Scan# 1566  
 Delta R.T. -0.01 min  
 Lab File: BF100124.D  
 Acq: 3 Nov 2017 9:57

Tgt Ion	Resp	Lower	Upper
188	100		
94	9.4	8.5	12.7
80	10.2	9.2	13.8



Abundance Ion 188.00 (187.70 to 188.70): E  
 Ion 94.00 (93.70 to 94.70): BF1  
 Ion 80.00 (79.70 to 80.70): BF1

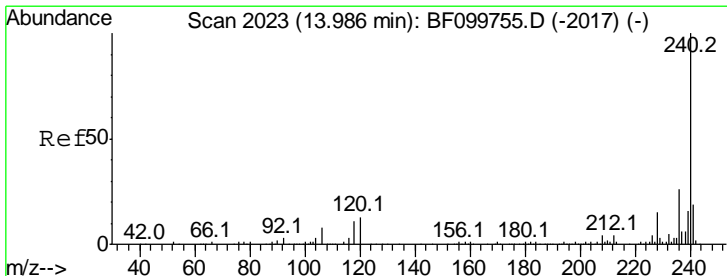
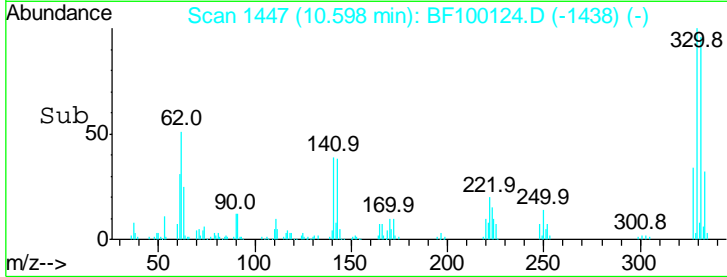
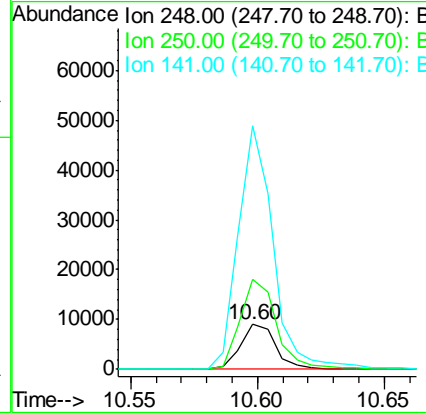
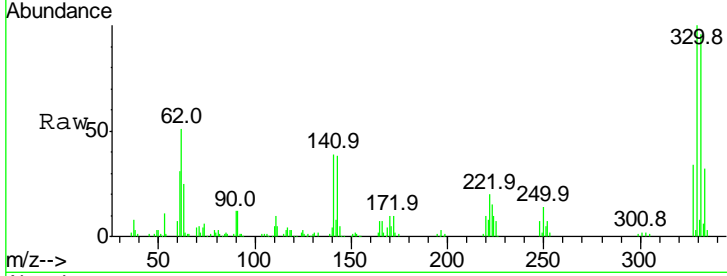




#66  
 4-Bromophenyl-phenylether  
 Concen: 2.815 ng  
 RT: 10.60 min Scan# 1447  
 Delta R.T. -0.25 min  
 Lab File: BF100124.D  
 Acq: 3 Nov 2017 9:57

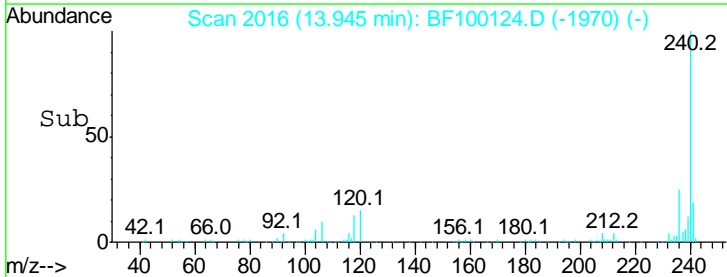
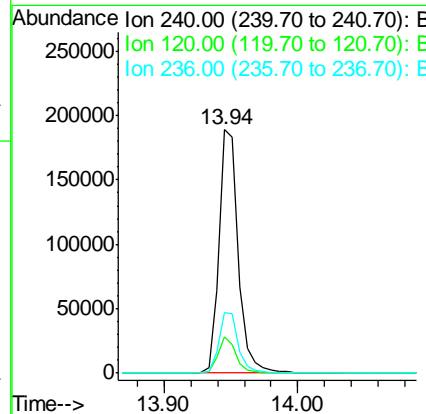
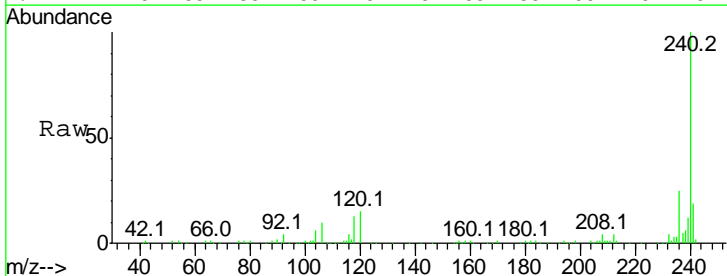
Instrument :  
 BNA\_F  
 ClientSampled :

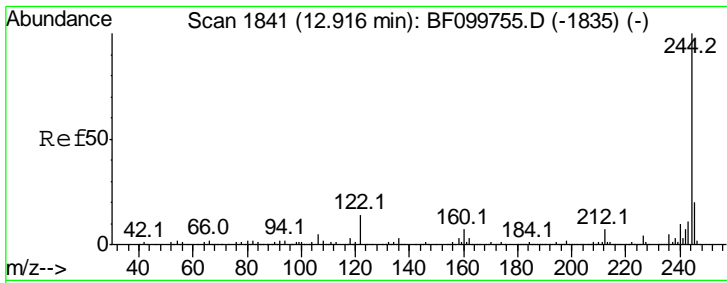
Tgt Ion	Resp	Lower	Upper
248	100		
250	199.4	76.9	115.3#
141	542.0	74.4	111.6#



#75  
 Chrysene-d12  
 Concen: 20.000 ng  
 RT: 13.94 min Scan# 2016  
 Delta R.T. -0.03 min  
 Lab File: BF100124.D  
 Acq: 3 Nov 2017 9:57

Tgt Ion	Resp	Lower	Upper
240	100		
120	14.7	9.5	14.3#
236	24.8	20.7	31.1



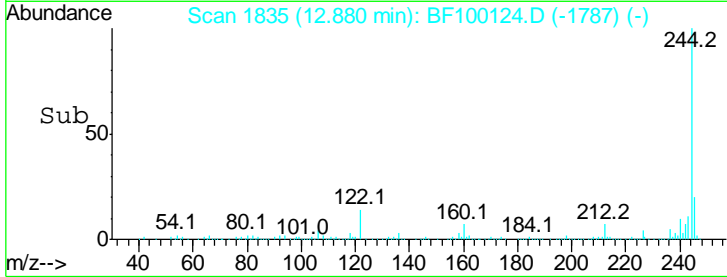
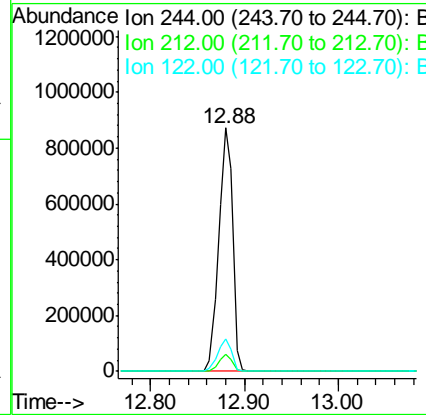
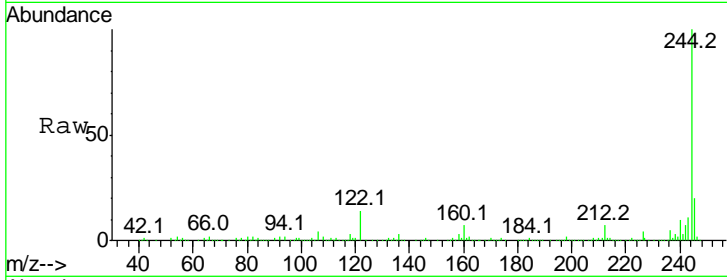


#78  
 Terphenyl-d14  
 Concen: 103.774 ng  
 RT: 12.88 min Scan# 1835  
 Delta R.T. -0.02 min  
 Lab File: BF100124.D  
 Acq: 3 Nov 2017 9:57

Instrument :  
 BNA\_F  
 ClientSampled :

Tgt Ion: 244 Resp: 915728

Ion	Ratio	Lower	Upper
244	100		
212	6.9	5.4	8.0
122	13.5	11.0	16.4



#86  
 Perylene-d12  
 Concen: 20.000 ng  
 RT: 15.41 min Scan# 2265  
 Delta R.T. -0.05 min  
 Lab File: BF100124.D  
 Acq: 3 Nov 2017 9:57

Tgt Ion: 264 Resp: 144906

Ion	Ratio	Lower	Upper
264	100		
260	21.9	19.2	28.8
265	21.9	17.5	26.3

