

Data Path : Z:\svoasrv\HPCHEM1\BNA_F\Data\BF110624\
 Data File : BF140259.D
 Acq On : 06 Nov 2024 17:30
 Operator : RC/JU
 Sample : SSTDCCC040
 Misc :
 ALS Vial : 2 Sample Multiplier: 1

Instrument :
 BNA_F
 ClientSampleId :
 SSTDCCC040EC

Quant Time: Nov 06 18:11:08 2024
 Quant Method : Z:\svoasrv\HPCHEM1\BNA_F\Methods\8270-BF110524.M
 Quant Title : ASP BNA STANDARDS FOR 5 POINT CALIBRATION
 QLast Update : Tue Nov 05 16:47:56 2024
 Response via : Initial Calibration

Compound	R.T.	QIon	Response	Conc	Units	Dev(Min)	
Internal Standards							
1) 1,4-Dichlorobenzene-d4	6.881	152	188922	20.000	ng	0.00	
21) Naphthalene-d8	8.163	136	703886	20.000	ng	0.00	
39) Acenaphthene-d10	9.922	164	409478	20.000	ng	0.00	
64) Phenanthrene-d10	11.410	188	722096	20.000	ng	0.00	
76) Chrysene-d12	14.057	240	416281	20.000	ng	0.00	
86) Perylene-d12	15.539	264	384228	20.000	ng	-0.02	
System Monitoring Compounds							
5) 2-Fluorophenol	5.493	112	864677	75.849	ng	0.00	
7) Phenol-d6	6.504	99	1092676	74.518	ng	0.00	
23) Nitrobenzene-d5	7.445	82	1059487	74.836	ng	0.00	
42) 2,4,6-Tribromophenol	10.710	330	323499	79.926	ng	0.00	
45) 2-Fluorobiphenyl	9.239	172	1865647	72.753	ng	0.00	
79) Terphenyl-d14	12.998	244	1975494	77.739	ng	0.00	
Target Compounds							
2) 1,4-Dioxane	2.669	88	191498	36.537	ng		Qvalue 97
3) Pyridine	3.428	79	479584	37.501	ng		97
4) n-Nitrosodimethylamine	3.393	42	264911	35.879	ng		94
6) Aniline	6.540	93	506890	38.262	ng		100
8) 2-Chlorophenol	6.663	128	456332	38.257	ng		98
9) Benzaldehyde	6.428	77	343284	38.006	ng		98
10) Phenol	6.522	94	583309	37.456	ng		98
11) bis(2-Chloroethyl)ether	6.616	93	448887	37.944	ng		98
12) 1,3-Dichlorobenzene	6.822	146	533363	38.158	ng		99
13) 1,4-Dichlorobenzene	6.898	146	535856	38.011	ng		99
14) 1,2-Dichlorobenzene	7.051	146	494376	37.547	ng		99
15) Benzyl Alcohol	7.016	79	427257	37.798	ng		97
16) 2,2'-oxybis(1-Chloropr...	7.151	45	697772	36.438	ng		99
17) 2-Methylphenol	7.128	107	378463	38.036	ng		99
18) Hexachloroethane	7.392	117	198414	37.784	ng		99
19) n-Nitroso-di-n-propyla...	7.292	70	341856	36.545	ng		97
20) 3+4-Methylphenols	7.281	107	473997	37.930	ng		100
22) Acetophenone	7.287	105	645459	36.985	ng		96
24) Nitrobenzene	7.463	77	549050	36.960	ng		97
25) Isophorone	7.698	82	904026	37.085	ng		99
26) 2-Nitrophenol	7.775	139	239160	40.472	ng		99
27) 2,4-Dimethylphenol	7.810	122	313295	38.971	ng		96
28) bis(2-Chloroethoxy)met...	7.904	93	555056	38.049	ng		100
29) 2,4-Dichlorophenol	8.016	162	389502	39.164	ng		99
30) 1,2,4-Trichlorobenzene	8.098	180	454658	38.150	ng		98
31) Naphthalene	8.181	128	1355014	37.279	ng		100
32) Benzoic acid	7.922	122	276013	41.836	ng		99
33) 4-Chloroaniline	8.228	127	457073	38.197	ng		99
34) Hexachlorobutadiene	8.298	225	304672	37.770	ng		100
35) Caprolactam	8.610	113	118740	39.247	ng		94
36) 4-Chloro-3-methylphenol	8.710	107	424846	38.367	ng		96
37) 2-Methylnaphthalene	8.869	142	893798	37.678	ng		100
38) 1-Methylnaphthalene	8.969	142	874538	37.612	ng		100
40) 1,2,4,5-Tetrachloroben...	9.039	216	459092	38.298	ng		99
41) Hexachlorocyclopentadiene	9.022	237	145748	43.389	ng		99
43) 2,4,6-Trichlorophenol	9.151	196	290045	39.045	ng		99

Data Path : Z:\svoasrv\HPCHEM1\BNA_F\Data\BF110624\
 Data File : BF140259.D
 Acq On : 06 Nov 2024 17:30
 Operator : RC/JU
 Sample : SSTDCCC040
 Misc :
 ALS Vial : 2 Sample Multiplier: 1

Instrument :
 BNA_F
 ClientSampleId :
 SSTDCCC040EC

Quant Time: Nov 06 18:11:08 2024
 Quant Method : Z:\svoasrv\HPCHEM1\BNA_F\Methods\8270-BF110524.M
 Quant Title : ASP BNA STANDARDS FOR 5 POINT CALIBRATION
 QLast Update : Tue Nov 05 16:47:56 2024
 Response via : Initial Calibration

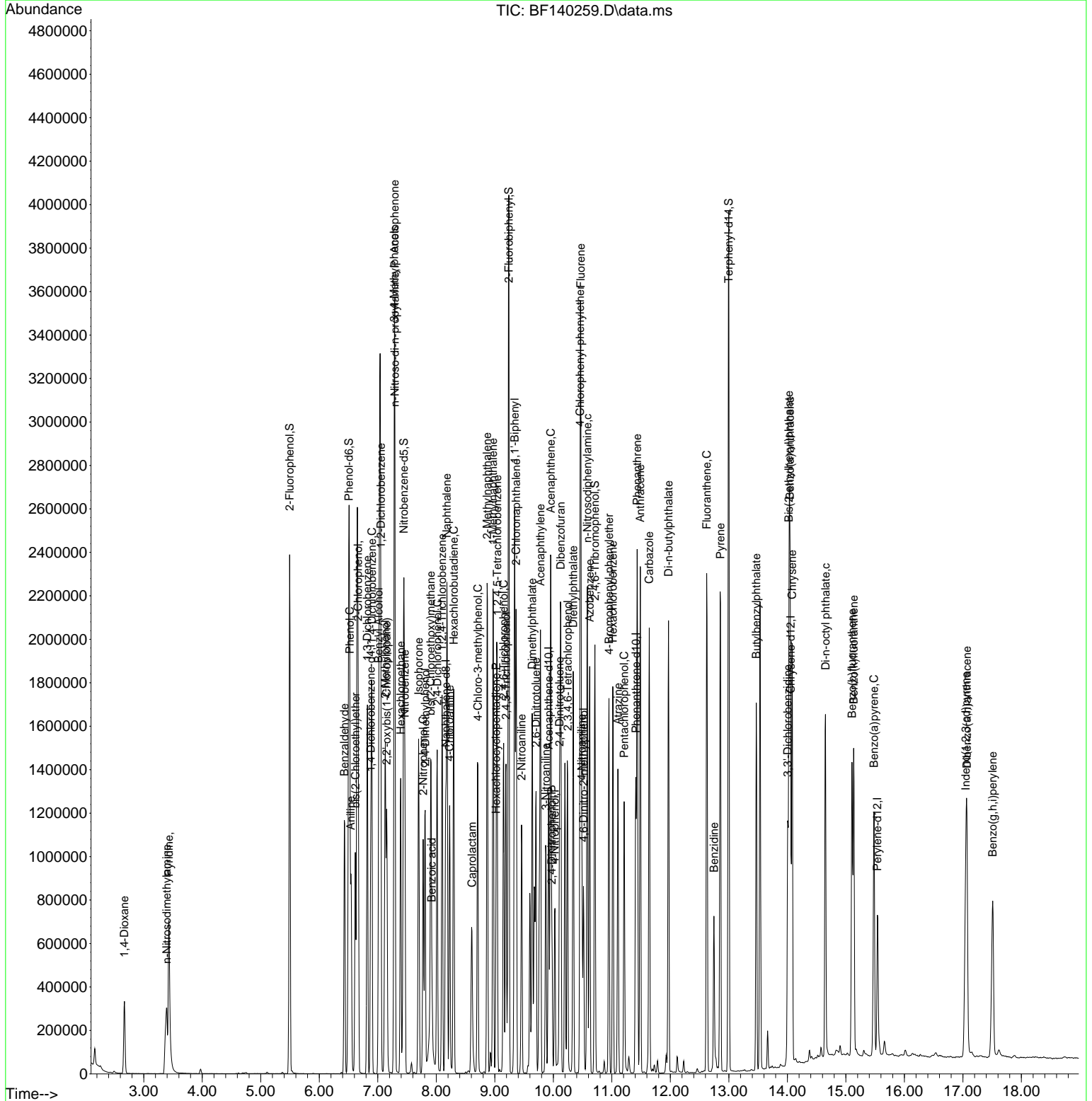
Compound	R.T.	QIon	Response	Conc	Units	Dev(Min)
44) 2,4,5-Trichlorophenol	9.192	196	307099	39.318	ng	97
46) 1,1'-Biphenyl	9.339	154	1098565	37.116	ng	100
47) 2-Chloronaphthalene	9.363	162	835207	37.492	ng	100
48) 2-Nitroaniline	9.457	65	281613	37.801	ng	97
49) Acenaphthylene	9.781	152	1185120	37.577	ng	99
50) Dimethylphthalate	9.639	163	962623	38.172	ng	99
51) 2,6-Dinitrotoluene	9.704	165	227631	38.401	ng	98
52) Acenaphthene	9.957	154	849724	37.985	ng	99
53) 3-Nitroaniline	9.875	138	214752	38.475	ng	97
54) 2,4-Dinitrophenol	9.975	184	102884	38.787	ng	96
55) Dibenzofuran	10.128	168	1175938	37.593	ng	99
56) 4-Nitrophenol	10.028	139	156624	39.908	ng	97
57) 2,4-Dinitrotoluene	10.104	165	305940	39.772	ng	96
58) Fluorene	10.469	166	925327	37.161	ng	99
59) 2,3,4,6-Tetrachlorophenol	10.245	232	258539	40.406	ng	96
60) Diethylphthalate	10.339	149	965662	38.534	ng	99
61) 4-Chlorophenyl-phenyle...	10.457	204	470720	37.509	ng	99
62) 4-Nitroaniline	10.486	138	212382	38.289	ng	97
63) Azobenzene	10.622	77	966538	37.206	ng	98
65) 4,6-Dinitro-2-methylph...	10.516	198	157047	41.410	ng	98
66) n-Nitrosodiphenylamine	10.581	169	780352	37.573	ng	100
67) 4-Bromophenyl-phenylether	10.951	248	304827	39.202	ng	98
68) Hexachlorobenzene	11.016	284	341865	38.571	ng	99
69) Atrazine	11.104	200	243503	42.854	ng	98
70) Pentachlorophenol	11.210	266	203423	42.742	ng	98
71) Phenanthrene	11.433	178	1292740	37.513	ng	100
72) Anthracene	11.486	178	1272696	37.663	ng	100
73) Carbazole	11.639	167	1163385	37.679	ng	99
74) Di-n-butylphthalate	11.969	149	1425869	39.013	ng	100
75) Fluoranthene	12.622	202	1338563	37.148	ng	100
77) Benzidine	12.745	184	395940	48.647	ng	100
78) Pyrene	12.857	202	1346427	39.173	ng	99
80) Butylbenzylphthalate	13.469	149	520544	42.059	ng	98
81) Benzo(a)anthracene	14.045	228	1011504	37.863	ng	100
82) 3,3'-Dichlorobenzidine	14.004	252	336495	40.109	ng	98
83) Chrysene	14.080	228	938466	37.513	ng	100
84) Bis(2-ethylhexyl)phtha...	14.027	149	698290	40.256	ng	100
85) Di-n-octyl phthalate	14.651	149	1056814	40.477	ng	98
87) Indeno(1,2,3-cd)pyrene	17.051	276	879419	38.992	ng	99
88) Benzo(b)fluoranthene	15.104	252	943558	40.599	ng	99
89) Benzo(k)fluoranthene	15.133	252	746670	35.012	ng	100
90) Benzo(a)pyrene	15.480	252	740158	38.626	ng	99
91) Dibenzo(a,h)anthracene	17.068	278	710888	38.311	ng	100
92) Benzo(g,h,i)perylene	17.509	276	734781	38.818	ng	99

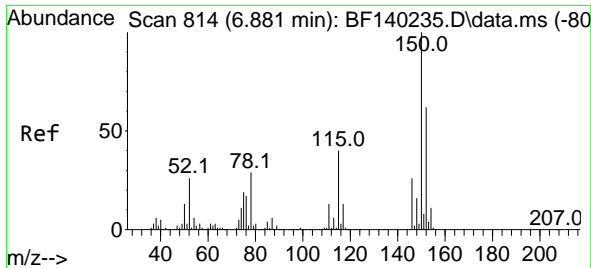
(#) = qualifier out of range (m) = manual integration (+) = signals summed

Data Path : Z:\svoasrv\HPCHEM1\BNA_F\Data\BF110624\
 Data File : BF140259.D
 Acq On : 06 Nov 2024 17:30
 Operator : RC/JU
 Sample : SSTDCCC040
 Misc :
 ALS Vial : 2 Sample Multiplier: 1

Instrument :
 BNA_F
 ClientSampleId :
 SSTDCCC040EC

Quant Time: Nov 06 18:11:08 2024
 Quant Method : Z:\svoasrv\HPCHEM1\BNA_F\Methods\8270-BF110524.M
 Quant Title : ASP BNA STANDARDS FOR 5 POINT CALIBRATION
 QLast Update : Tue Nov 05 16:47:56 2024
 Response via : Initial Calibration

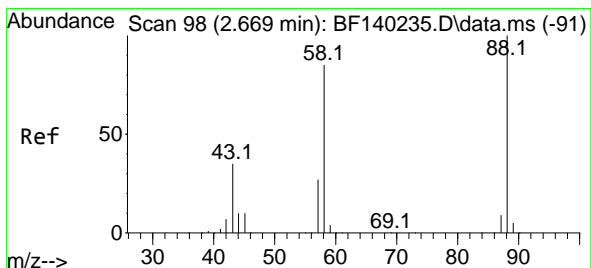
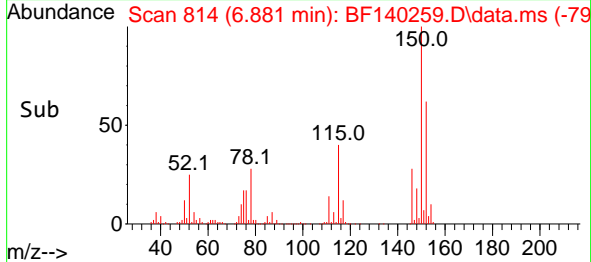
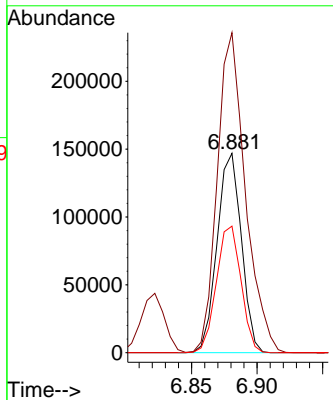
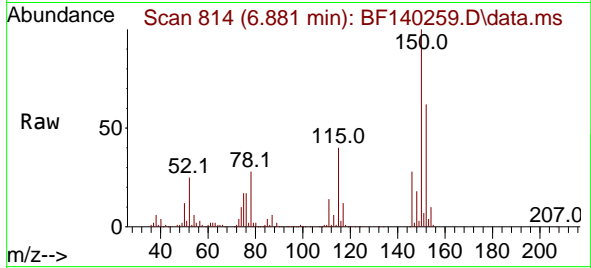




#1
 1,4-Dichlorobenzene-d4
 Concen: 20.000 ng
 RT: 6.881 min Scan# 81
 Delta R.T. -0.000 min
 Lab File: BF140259.D
 Acq: 06 Nov 2024 17:30

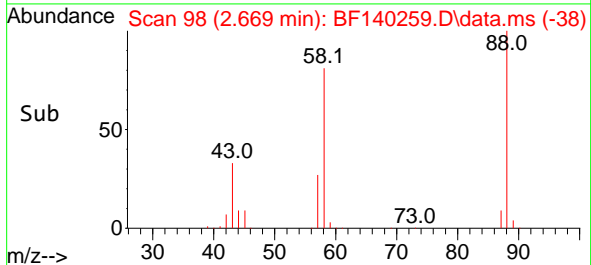
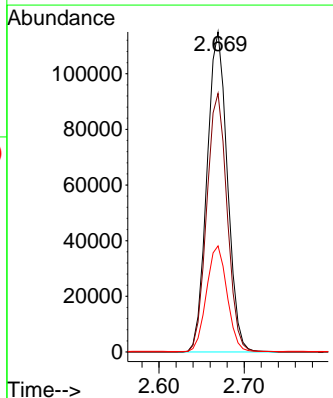
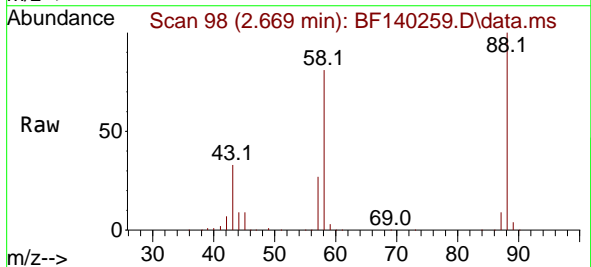
Instrument :
 BNA_F
 ClientSampleId :
 SSTDCCC040EC

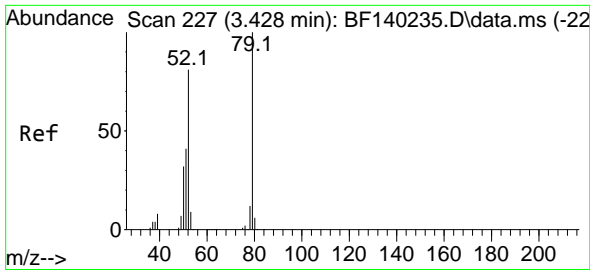
Tgt Ion:152 Resp: 188922
 Ion Ratio Lower Upper
 152 100
 150 160.6 129.4 194.2
 115 63.5 51.5 77.3



#2
 1,4-Dioxane
 Concen: 36.537 ng
 RT: 2.669 min Scan# 98
 Delta R.T. 0.000 min
 Lab File: BF140259.D
 Acq: 06 Nov 2024 17:30

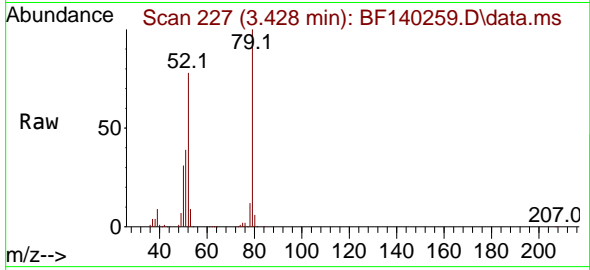
Tgt Ion: 88 Resp: 191498
 Ion Ratio Lower Upper
 88 100
 58 80.8 66.7 100.1
 43 33.3 27.8 41.8



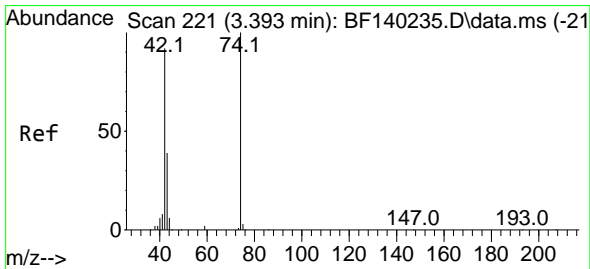
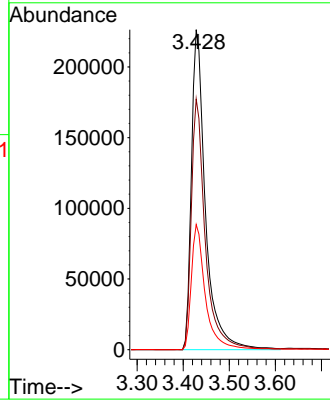
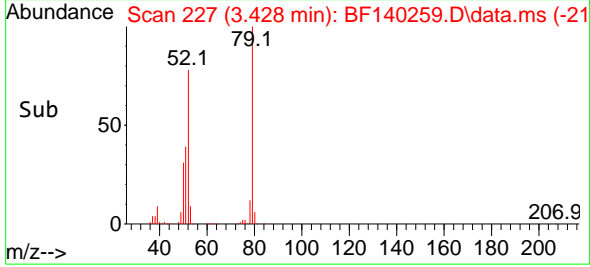


#3
 Pyridine
 Concen: 37.501 ng
 RT: 3.428 min Scan# 211
 Delta R.T. 0.000 min
 Lab File: BF140259.D
 Acq: 06 Nov 2024 17:30

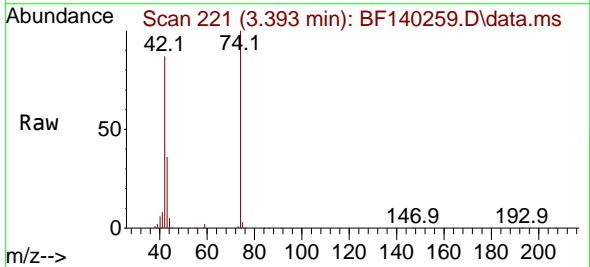
Instrument :
 BNA_F
 ClientSampleId :
 SSTDCCC040EC



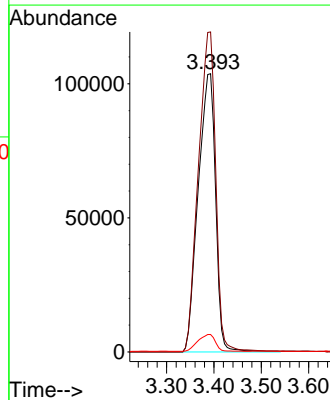
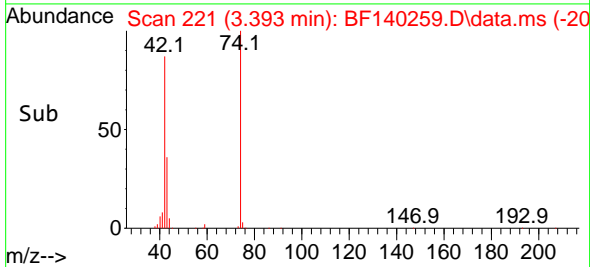
Tgt Ion: 79 Resp: 479584
 Ion Ratio Lower Upper
 79 100
 52 78.3 64.6 97.0
 51 39.1 32.5 48.7

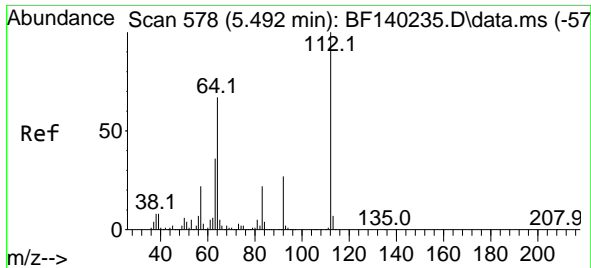


#4
 n-Nitrosodimethylamine
 Concen: 35.879 ng
 RT: 3.393 min Scan# 221
 Delta R.T. 0.000 min
 Lab File: BF140259.D
 Acq: 06 Nov 2024 17:30



Tgt Ion: 42 Resp: 264911
 Ion Ratio Lower Upper
 42 100
 74 115.0 86.9 130.3
 44 6.3 5.0 7.6



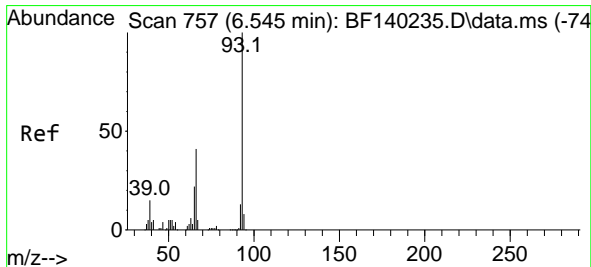
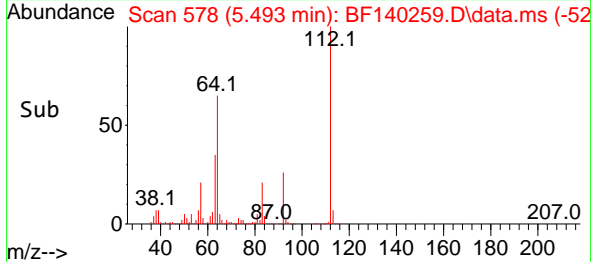
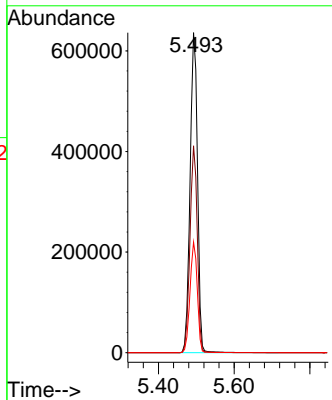
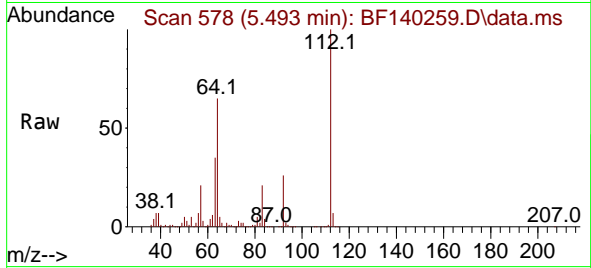


#5
 2-Fluorophenol
 Concen: 75.849 ng
 RT: 5.493 min Scan# 51
 Delta R.T. 0.000 min
 Lab File: BF140259.D
 Acq: 06 Nov 2024 17:30

Instrument : BNA_F
 ClientSampleId : SSTDCCC040EC

Tgt Ion: 112 Resp: 864677

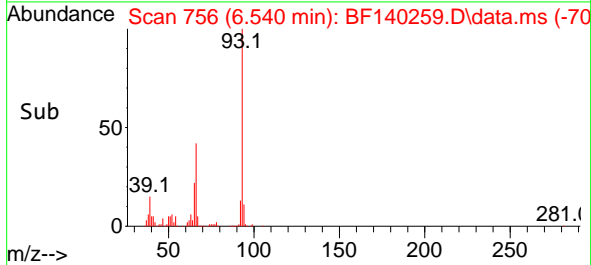
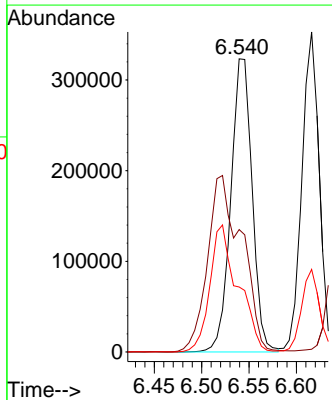
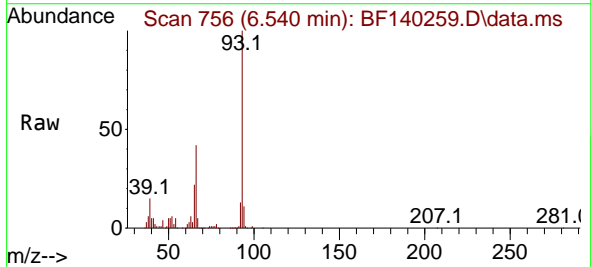
Ion	Ratio	Lower	Upper
112	100		
64	64.6	53.4	80.2
63	34.5	28.9	43.3

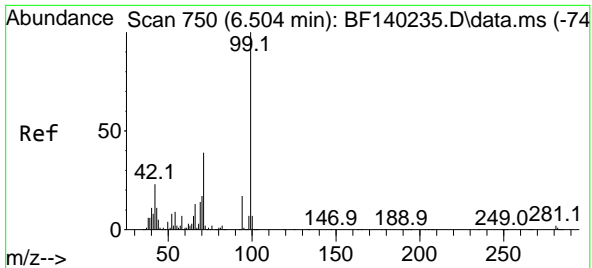


#6
 Aniline
 Concen: 38.262 ng
 RT: 6.540 min Scan# 756
 Delta R.T. -0.006 min
 Lab File: BF140259.D
 Acq: 06 Nov 2024 17:30

Tgt Ion: 93 Resp: 506890

Ion	Ratio	Lower	Upper
93	100		
66	41.8	33.6	50.4
65	22.2	17.5	26.3



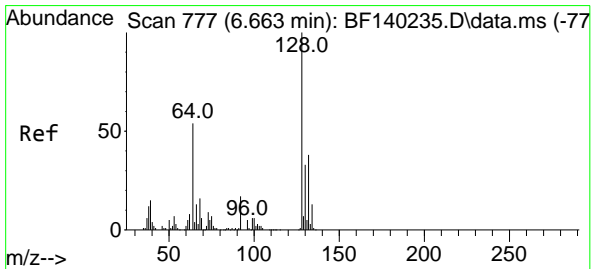
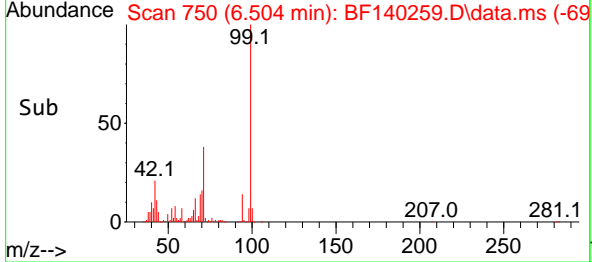
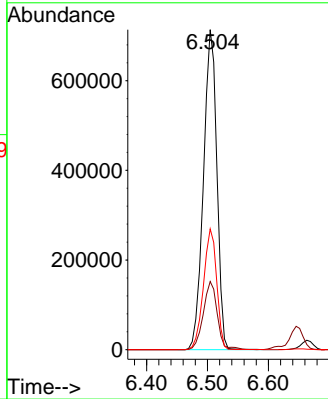
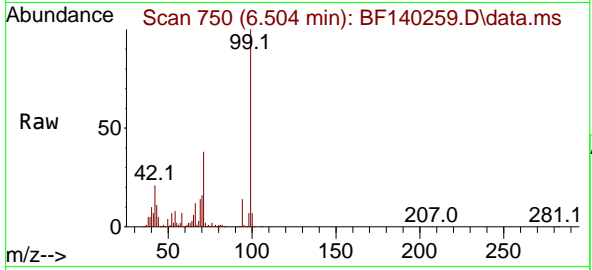


#7
 Phenol-d6
 Concen: 74.518 ng
 RT: 6.504 min Scan# 711
 Delta R.T. 0.000 min
 Lab File: BF140259.D
 Acq: 06 Nov 2024 17:30

Instrument :
 BNA_F
 ClientSampleId :
 SSTDCCC040EC

Tgt Ion: 99 Resp: 1092676

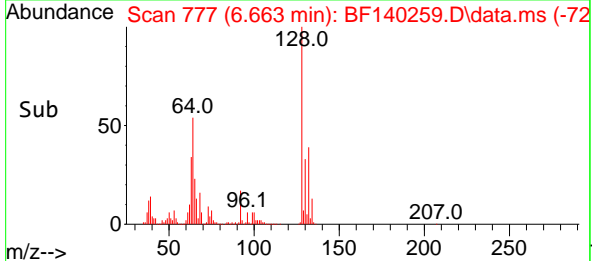
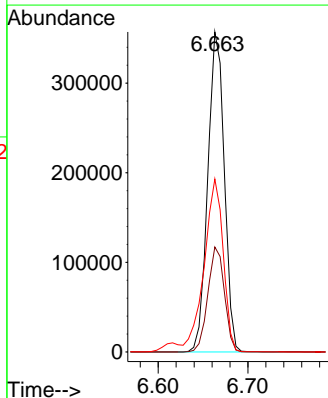
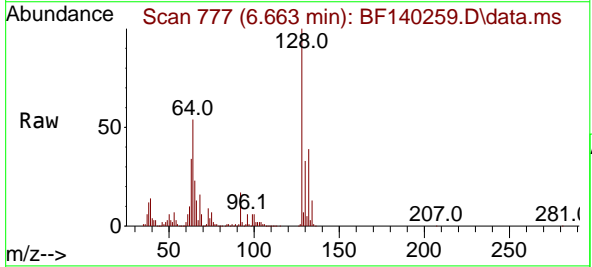
Ion	Ratio	Lower	Upper
99	100		
42	21.3	18.2	27.2
71	37.8	30.9	46.3

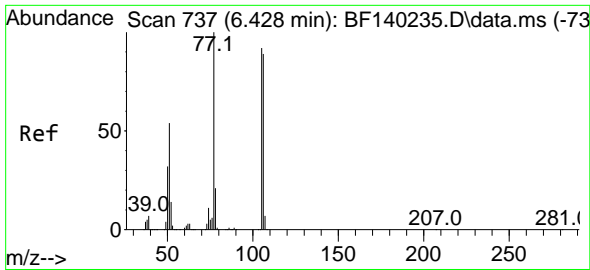


#8
 2-Chlorophenol
 Concen: 38.257 ng
 RT: 6.663 min Scan# 777
 Delta R.T. 0.000 min
 Lab File: BF140259.D
 Acq: 06 Nov 2024 17:30

Tgt Ion: 128 Resp: 456332

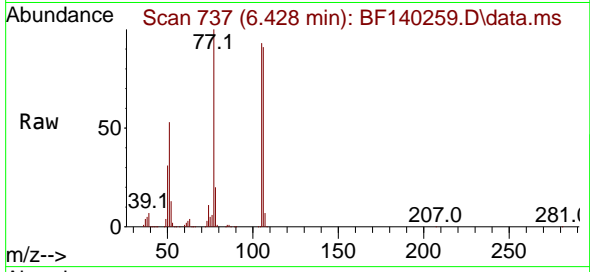
Ion	Ratio	Lower	Upper
128	100		
130	32.8	12.9	52.9
64	54.1	36.3	76.3



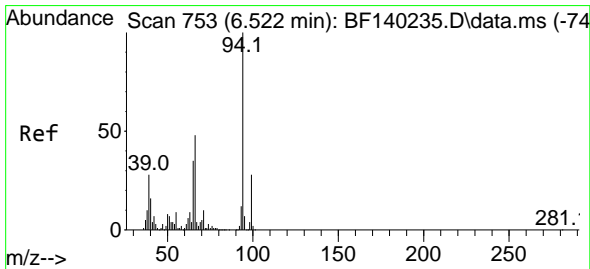
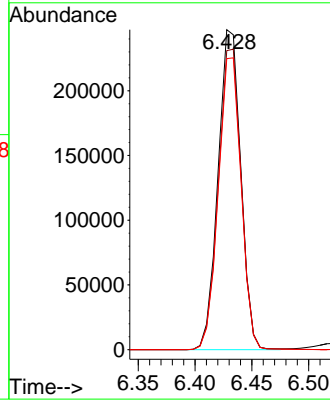
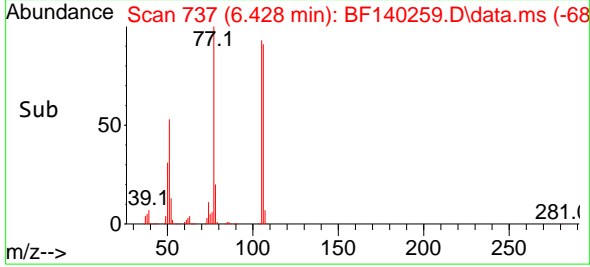


#9
Benzaldehyde
Concen: 38.006 ng
RT: 6.428 min Scan# 711
Delta R.T. 0.000 min
Lab File: BF140259.D
Acq: 06 Nov 2024 17:30

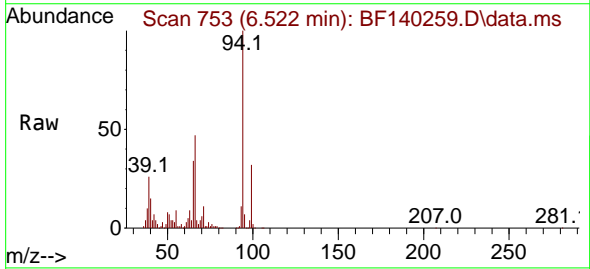
Instrument :
BNA_F
ClientSampleId :
SSTDCCC040EC



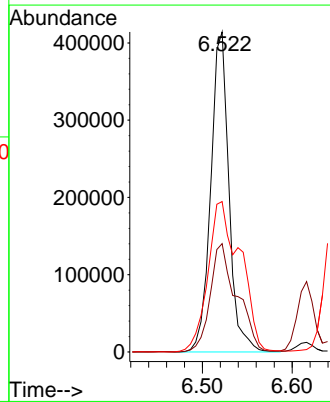
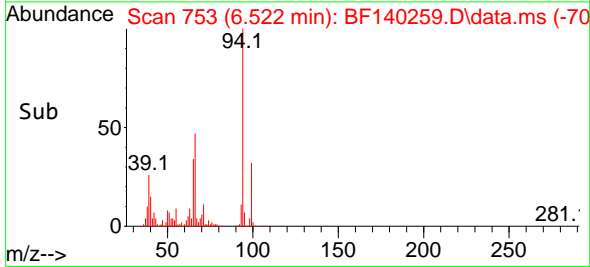
Tgt Ion: 77 Resp: 343284
Ion Ratio Lower Upper
77 100
105 93.4 72.1 112.1
106 90.9 68.8 108.8

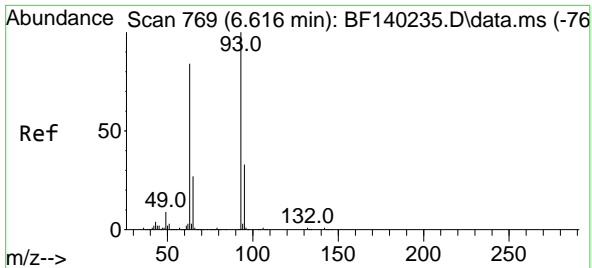


#10
Phenol
Concen: 37.456 ng
RT: 6.522 min Scan# 753
Delta R.T. 0.000 min
Lab File: BF140259.D
Acq: 06 Nov 2024 17:30



Tgt Ion: 94 Resp: 583309
Ion Ratio Lower Upper
94 100
65 33.8 15.1 55.1
66 47.0 28.8 68.8



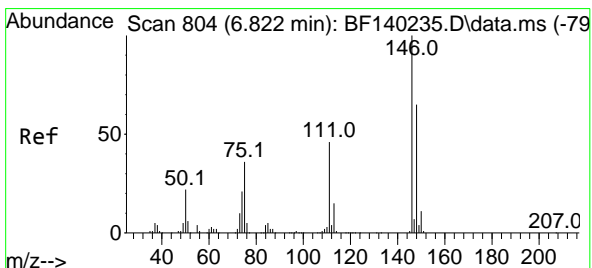
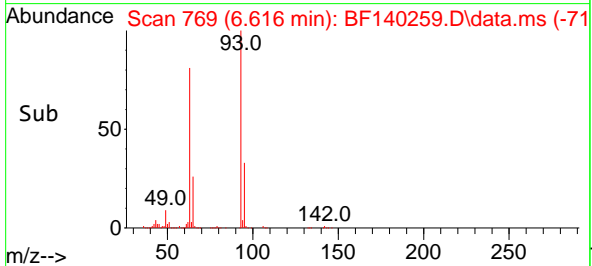
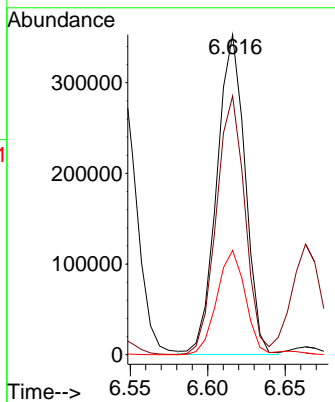
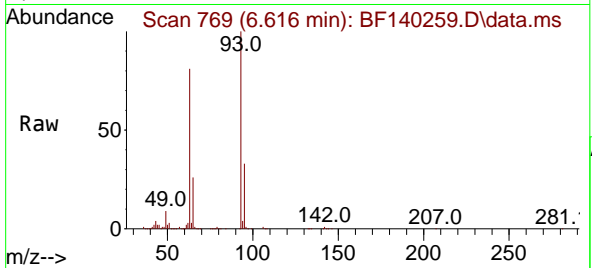


#11
 bis(2-Chloroethyl)ether
 Concen: 37.944 ng
 RT: 6.616 min Scan# 709
 Delta R.T. 0.000 min
 Lab File: BF140259.D
 Acq: 06 Nov 2024 17:30

Instrument : BNA_F
 ClientSampleId : SSTDCCC040EC

Tgt Ion: 93 Resp: 448887

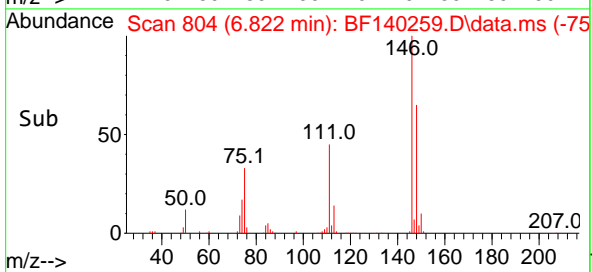
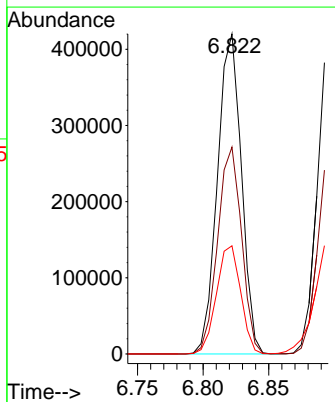
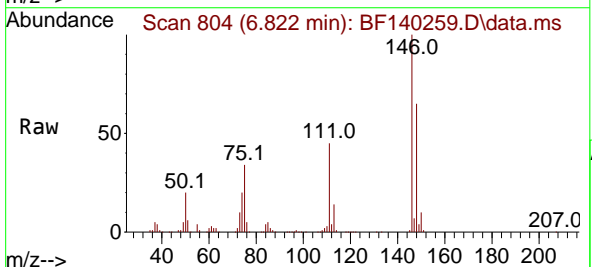
Ion	Ratio	Lower	Upper
93	100		
63	80.8	63.6	103.6
95	32.6	12.7	52.7

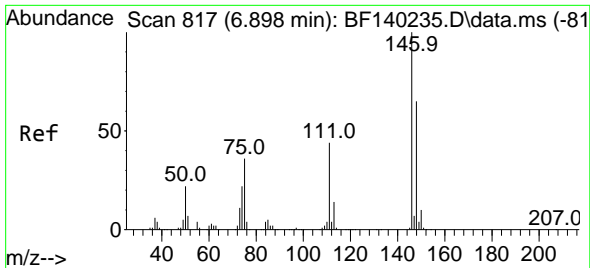


#12
 1,3-Dichlorobenzene
 Concen: 38.158 ng
 RT: 6.822 min Scan# 804
 Delta R.T. 0.000 min
 Lab File: BF140259.D
 Acq: 06 Nov 2024 17:30

Tgt Ion: 146 Resp: 533363

Ion	Ratio	Lower	Upper
146	100		
148	64.6	51.7	77.5
75	33.8	28.4	42.6

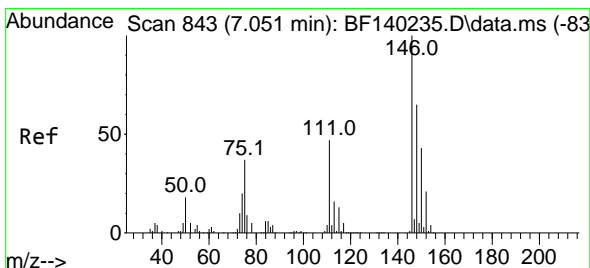
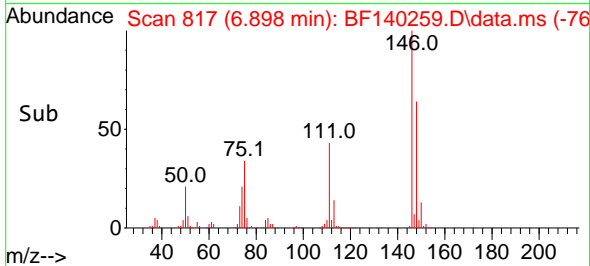
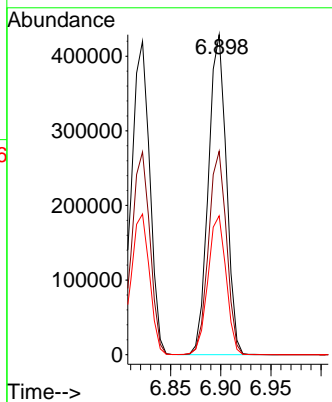
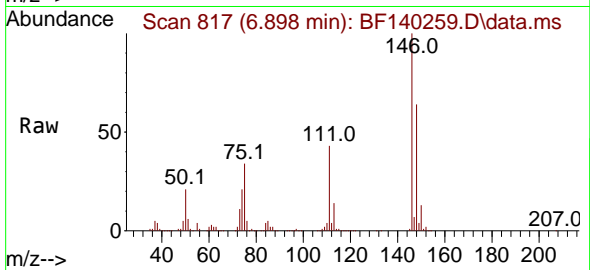




#13
 1,4-Dichlorobenzene
 Concen: 38.011 ng
 RT: 6.898 min Scan# 81
 Delta R.T. 0.000 min
 Lab File: BF140259.D
 Acq: 06 Nov 2024 17:30

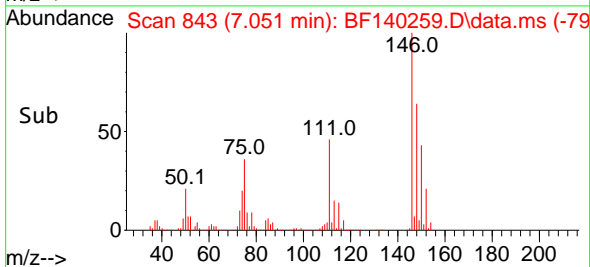
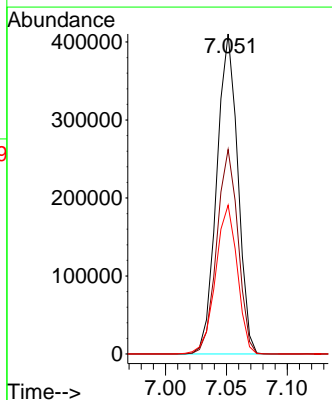
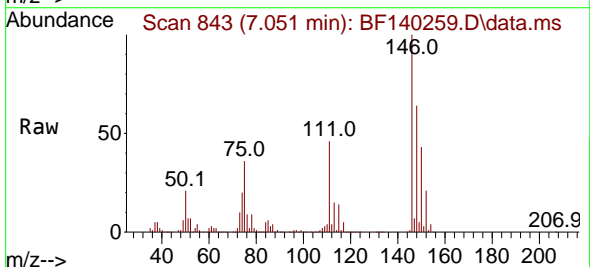
Instrument :
 BNA_F
 ClientSampleId :
 SSTDCCC040EC

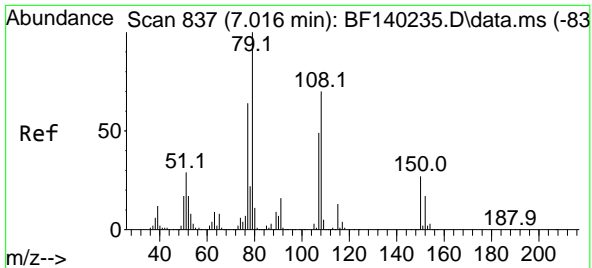
Tgt Ion:146 Resp: 535856
 Ion Ratio Lower Upper
 146 100
 148 63.6 51.8 77.6
 111 43.4 35.4 53.2



#14
 1,2-Dichlorobenzene
 Concen: 37.547 ng
 RT: 7.051 min Scan# 843
 Delta R.T. 0.000 min
 Lab File: BF140259.D
 Acq: 06 Nov 2024 17:30

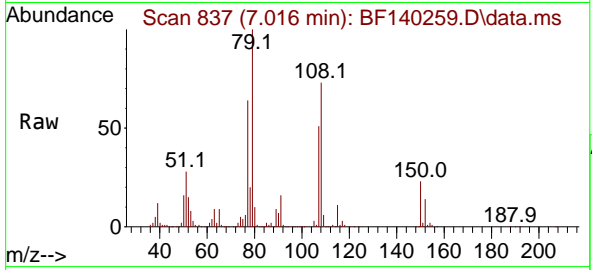
Tgt Ion:146 Resp: 494376
 Ion Ratio Lower Upper
 146 100
 148 63.9 51.8 77.6
 111 46.5 37.9 56.9



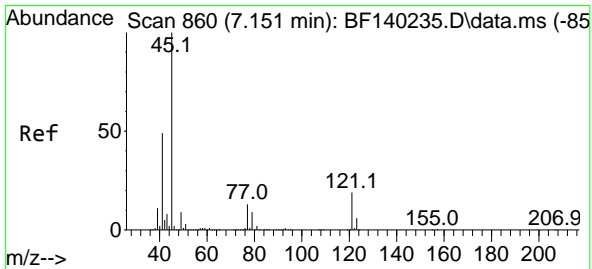
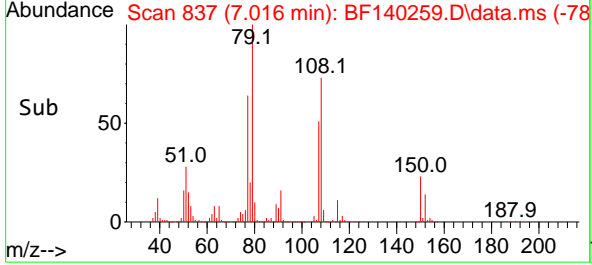
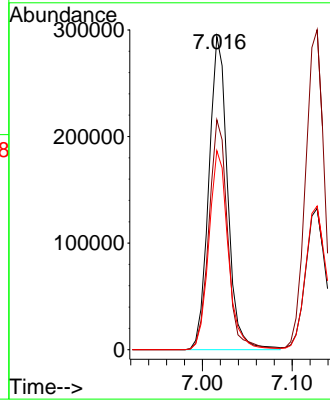


#15
 Benzyl Alcohol
 Concen: 37.798 ng
 RT: 7.016 min Scan# 81
 Delta R.T. 0.000 min
 Lab File: BF140259.D
 Acq: 06 Nov 2024 17:30

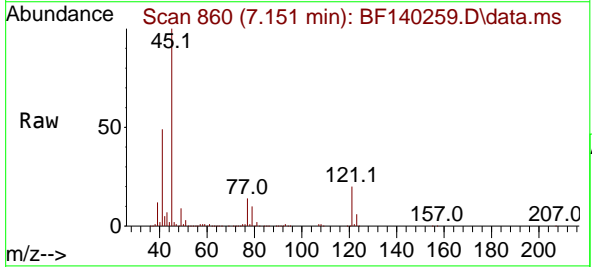
Instrument :
 BNA_F
 ClientSampleId :
 SSTDCCC040EC



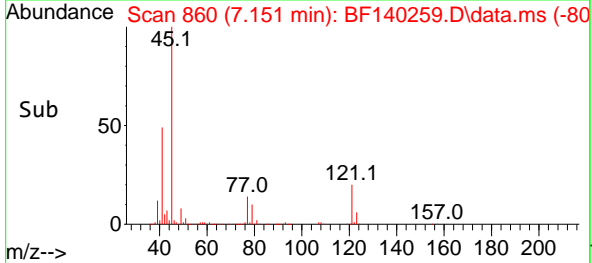
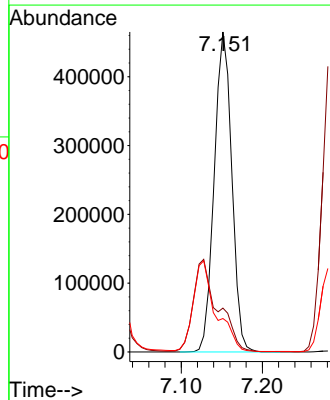
Tgt Ion: 79 Resp: 427257
 Ion Ratio Lower Upper
 79 100
 108 73.4 55.8 83.6
 77 63.6 51.1 76.7

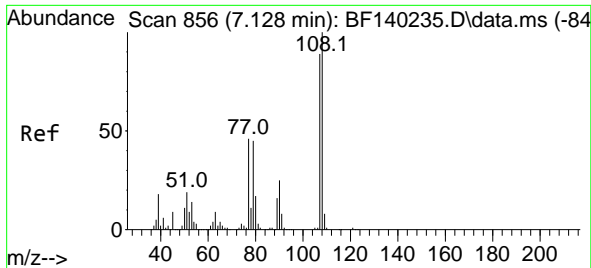


#16
 2,2'-oxybis(1-Chloropropane)
 Concen: 36.438 ng
 RT: 7.151 min Scan# 860
 Delta R.T. 0.000 min
 Lab File: BF140259.D
 Acq: 06 Nov 2024 17:30



Tgt Ion: 45 Resp: 697772
 Ion Ratio Lower Upper
 45 100
 77 13.7 0.0 33.3
 79 10.5 0.0 29.9

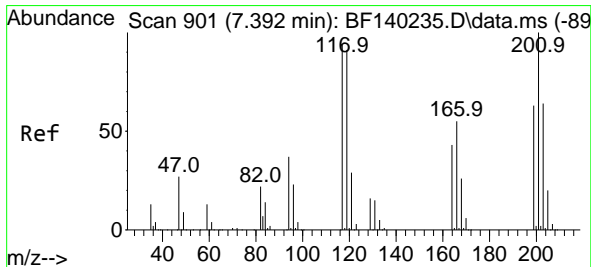
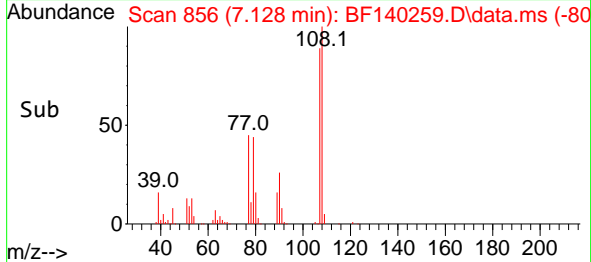
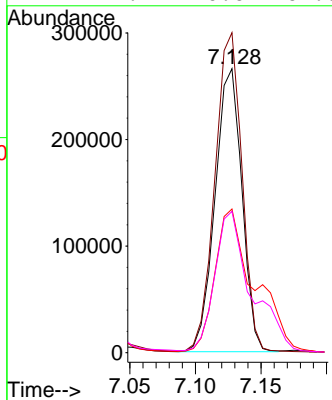
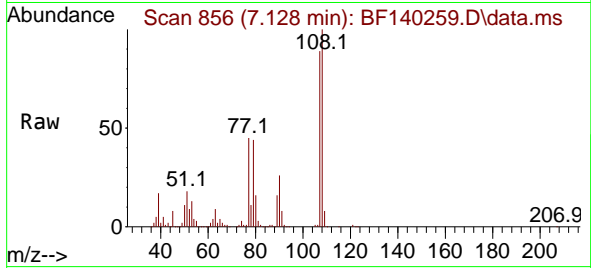




#17
 2-Methylphenol
 Concen: 38.036 ng
 RT: 7.128 min Scan# 81
 Delta R.T. 0.000 min
 Lab File: BF140259.D
 Acq: 06 Nov 2024 17:30

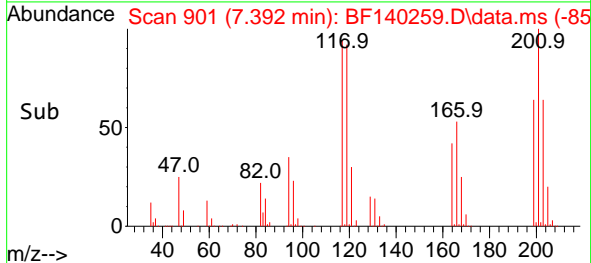
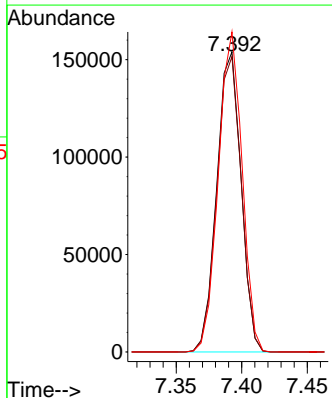
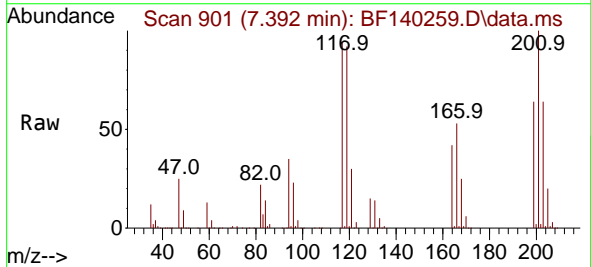
Instrument : BNA_F
 ClientSampleId : SSTDCCC040EC

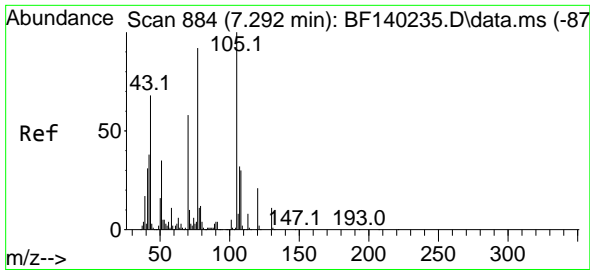
Tgt Ion	Resp	Lower	Upper
107	378463		
107	100		
108	112.7	90.5	135.7
77	50.6	41.8	62.6
79	49.7	40.6	61.0



#18
 Hexachloroethane
 Concen: 37.784 ng
 RT: 7.392 min Scan# 901
 Delta R.T. 0.000 min
 Lab File: BF140259.D
 Acq: 06 Nov 2024 17:30

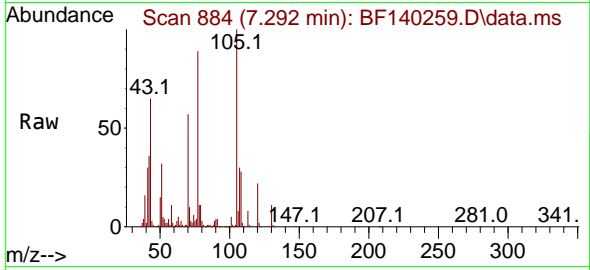
Tgt Ion	Resp	Lower	Upper
117	198414		
117	100		
119	98.4	77.3	115.9
201	106.6	85.1	127.7



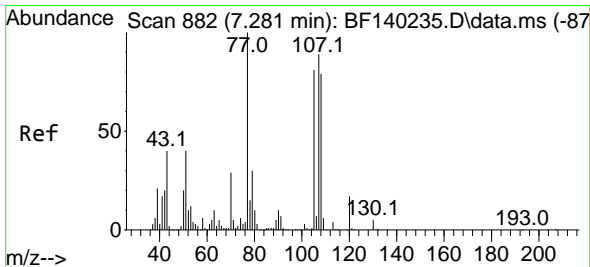
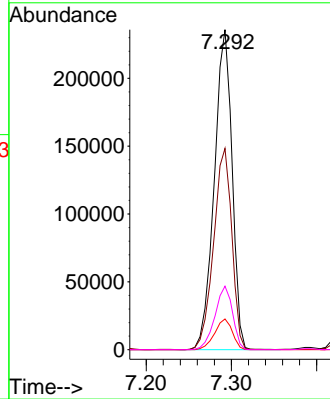
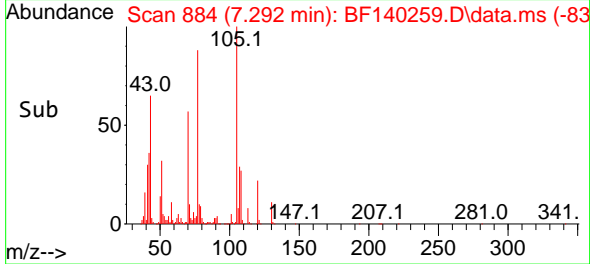


#19
 n-Nitroso-di-n-propylamine
 Concen: 36.545 ng
 RT: 7.292 min Scan# 884
 Delta R.T. 0.000 min
 Lab File: BF140259.D
 Acq: 06 Nov 2024 17:30

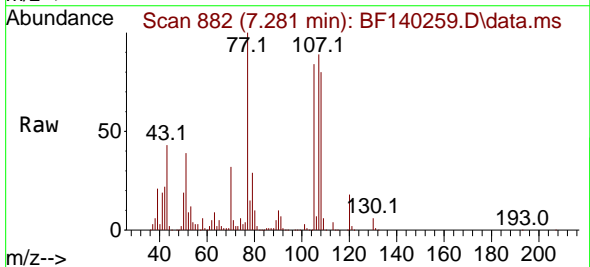
Instrument : BNA_F
 ClientSampleId : SSTDCCC040EC



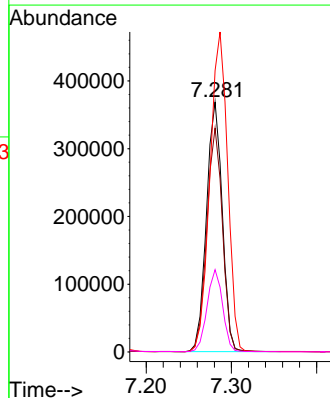
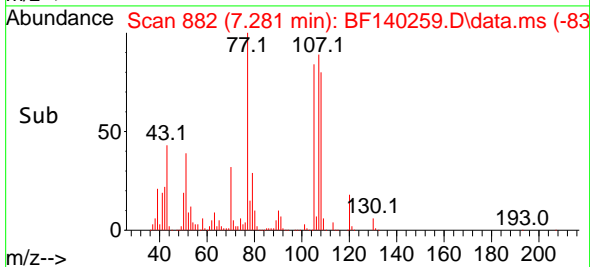
Tgt Ion: 70 Resp: 341856
 Ion Ratio Lower Upper
 70 100
 42 62.9 52.8 79.2
 101 9.6 7.4 11.2
 130 19.8 15.1 22.7

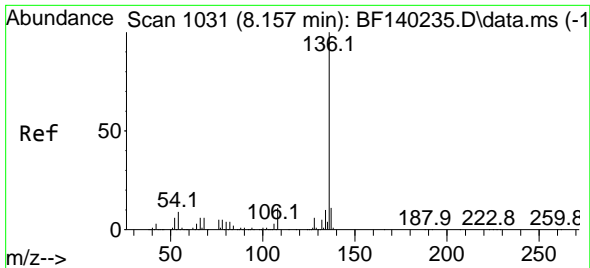


#20
 3+4-Methylphenols
 Concen: 37.930 ng
 RT: 7.281 min Scan# 882
 Delta R.T. 0.000 min
 Lab File: BF140259.D
 Acq: 06 Nov 2024 17:30



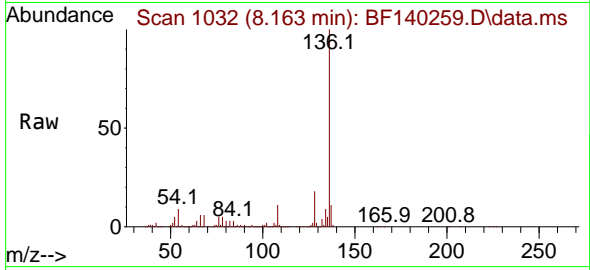
Tgt Ion: 107 Resp: 473997
 Ion Ratio Lower Upper
 107 100
 108 89.6 69.4 109.4
 77 112.6 92.7 132.7
 79 32.9 13.9 53.9





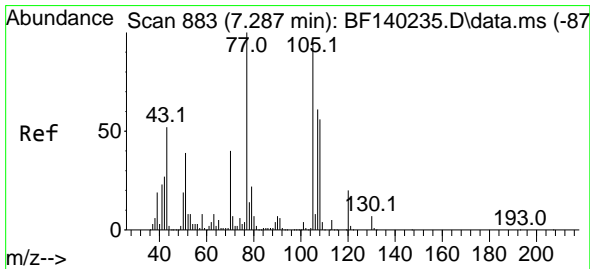
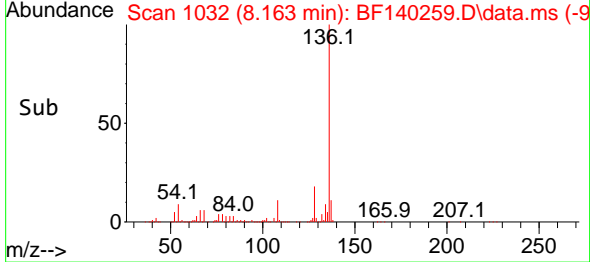
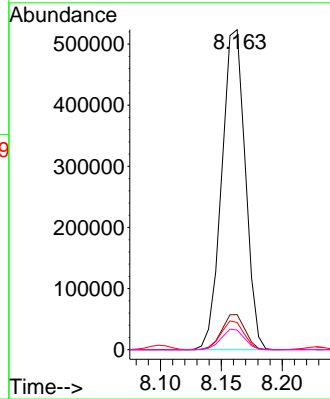
#21
 Naphthalene-d8
 Concen: 20.000 ng
 RT: 8.163 min Scan# 1032
 Delta R.T. 0.006 min
 Lab File: BF140259.D
 Acq: 06 Nov 2024 17:30

Instrument : BNA_F
 ClientSampleId : SSTDCCC040EC



Tgt Ion:136 Resp: 703886

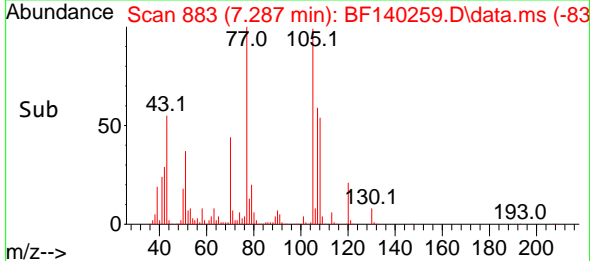
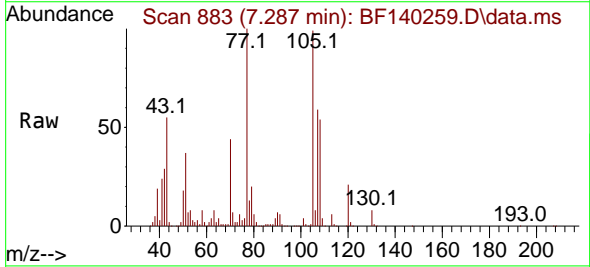
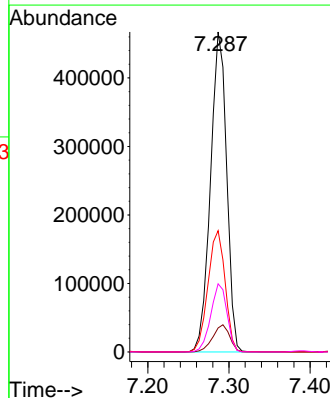
Ion	Ratio	Lower	Upper
136	100		
137	10.9	9.0	13.6
54	8.5	7.7	11.5
68	6.2	5.2	7.8

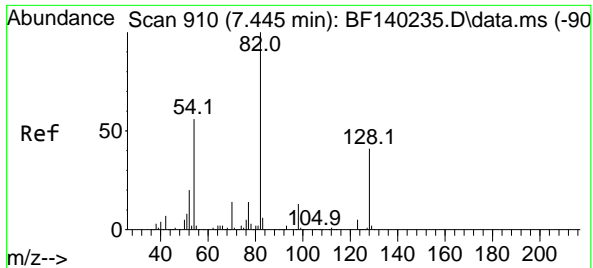


#22
 Acetophenone
 Concen: 36.985 ng
 RT: 7.287 min Scan# 883
 Delta R.T. 0.000 min
 Lab File: BF140259.D
 Acq: 06 Nov 2024 17:30

Tgt Ion:105 Resp: 645459

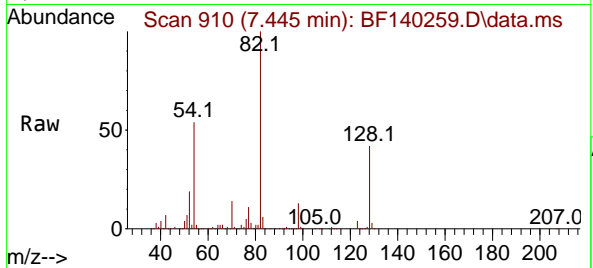
Ion	Ratio	Lower	Upper
105	100		
71	7.5	5.6	8.4
51	37.9	33.2	49.8
120	21.3	16.8	25.2





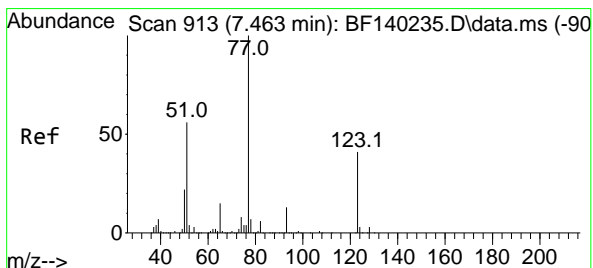
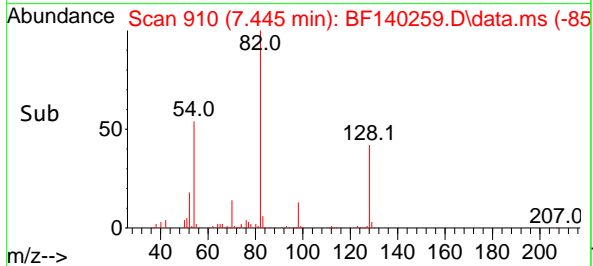
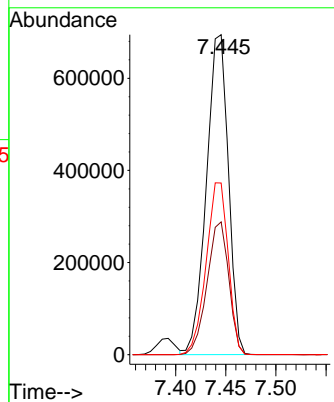
#23
 Nitrobenzene-d5
 Concen: 74.836 ng
 RT: 7.445 min Scan# 910
 Delta R.T. 0.000 min
 Lab File: BF140259.D
 Acq: 06 Nov 2024 17:30

Instrument :
 BNA_F
 ClientSampleId :
 SSTDCCC040EC



Tgt Ion: 82 Resp: 1059487

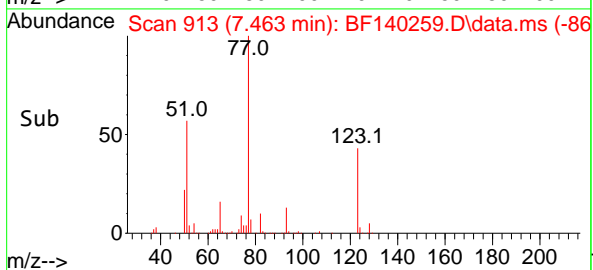
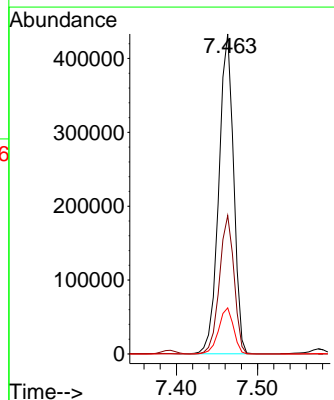
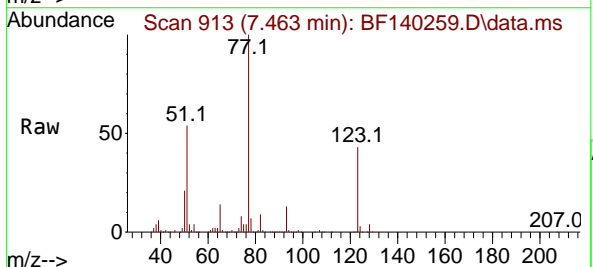
Ion	Ratio	Lower	Upper
82	100		
128	41.5	32.8	49.2
54	53.6	44.3	66.5

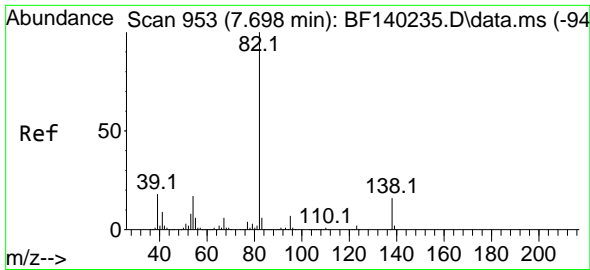


#24
 Nitrobenzene
 Concen: 36.960 ng
 RT: 7.463 min Scan# 913
 Delta R.T. 0.000 min
 Lab File: BF140259.D
 Acq: 06 Nov 2024 17:30

Tgt Ion: 77 Resp: 549050

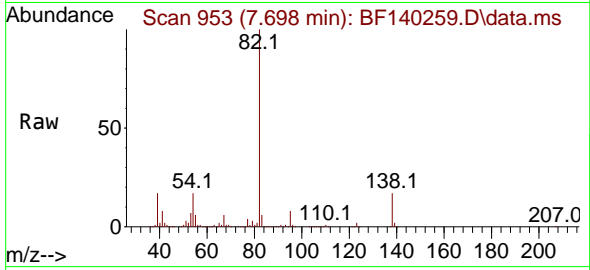
Ion	Ratio	Lower	Upper
77	100		
123	43.3	33.0	49.4
65	14.4	11.7	17.5



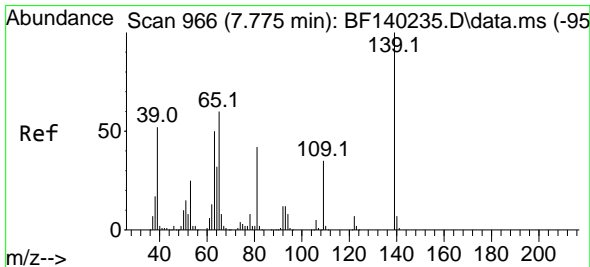
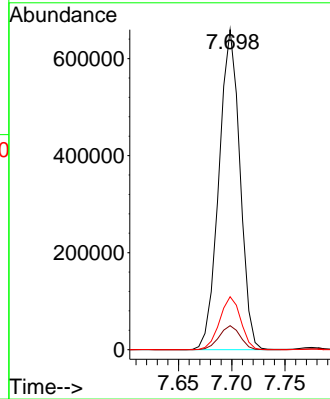
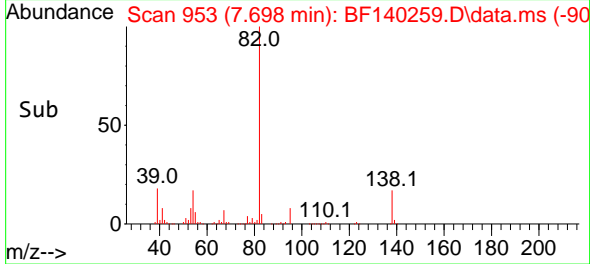


#25
 Isophorone
 Concen: 37.085 ng
 RT: 7.698 min Scan# 911
 Delta R.T. 0.000 min
 Lab File: BF140259.D
 Acq: 06 Nov 2024 17:30

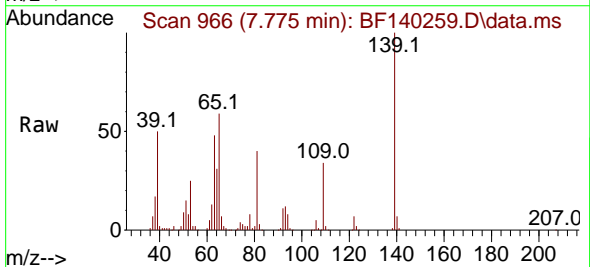
Instrument :
 BNA_F
 ClientSampleId :
 SSTDCCC040EC



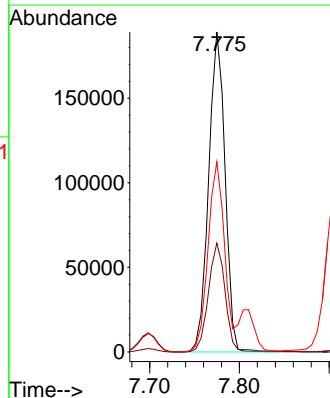
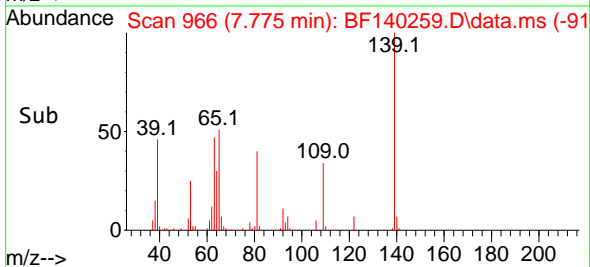
Tgt Ion: 82 Resp: 904026
 Ion Ratio Lower Upper
 82 100
 95 7.5 6.0 9.0
 138 16.5 12.9 19.3

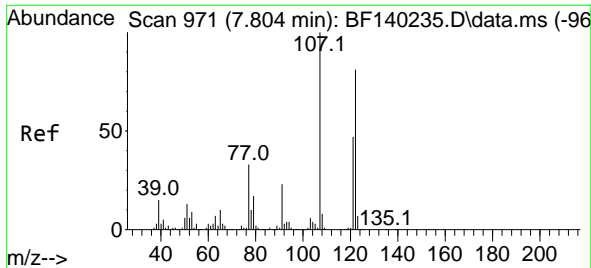


#26
 2-Nitrophenol
 Concen: 40.472 ng
 RT: 7.775 min Scan# 966
 Delta R.T. 0.000 min
 Lab File: BF140259.D
 Acq: 06 Nov 2024 17:30



Tgt Ion: 139 Resp: 239160
 Ion Ratio Lower Upper
 139 100
 109 34.1 27.8 41.8
 65 59.4 48.2 72.2

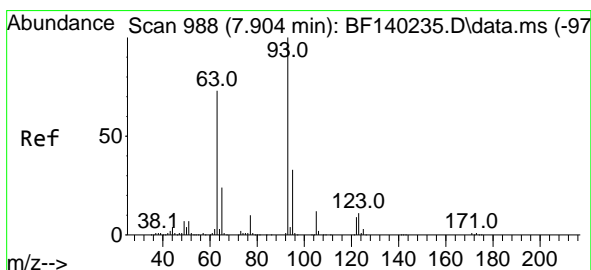
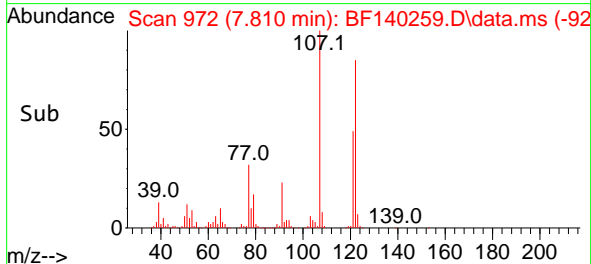
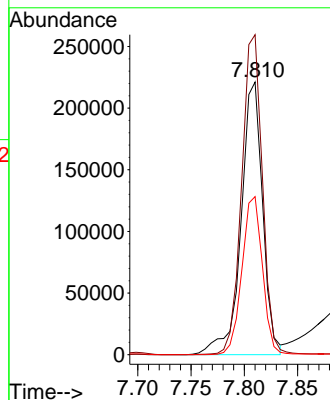
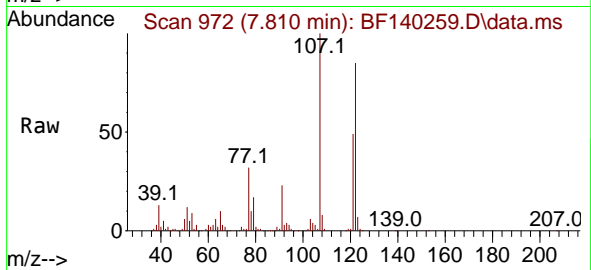




#27
 2,4-Dimethylphenol
 Concen: 38.971 ng
 RT: 7.810 min Scan# 911
 Delta R.T. 0.006 min
 Lab File: BF140259.D
 Acq: 06 Nov 2024 17:30

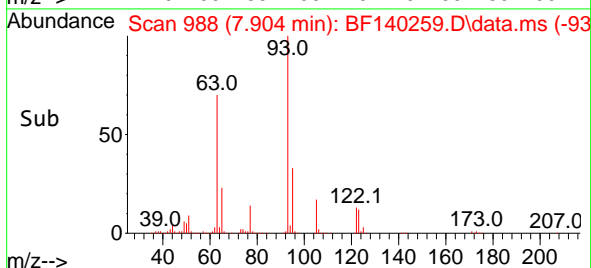
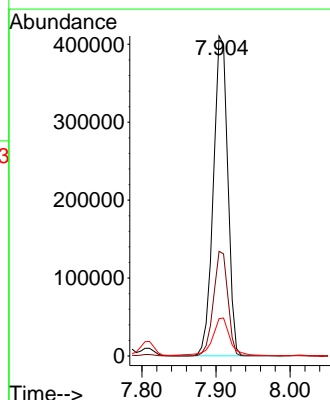
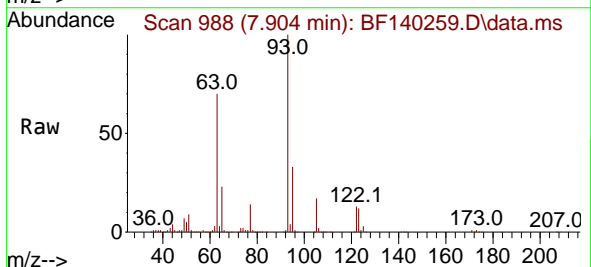
Instrument :
 BNA_F
 ClientSampleId :
 SSTDCCC040EC

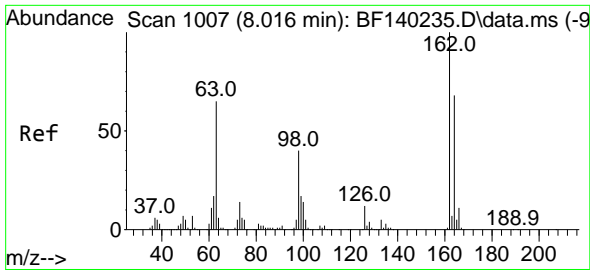
Tgt Ion:122 Resp: 313295
 Ion Ratio Lower Upper
 122 100
 107 117.4 99.4 149.0
 121 58.0 47.1 70.7



#28
 bis(2-Chloroethoxy)methane
 Concen: 38.049 ng
 RT: 7.904 min Scan# 988
 Delta R.T. 0.000 min
 Lab File: BF140259.D
 Acq: 06 Nov 2024 17:30

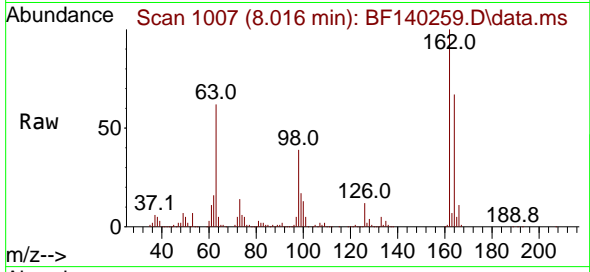
Tgt Ion: 93 Resp: 555056
 Ion Ratio Lower Upper
 93 100
 95 32.7 26.1 39.1
 123 11.6 9.4 14.0



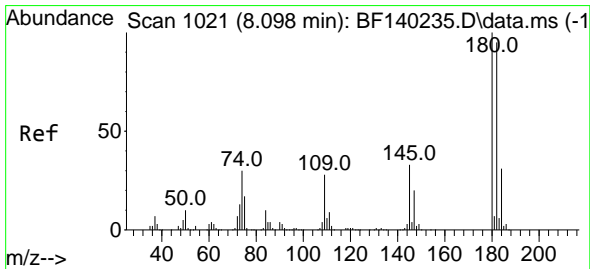
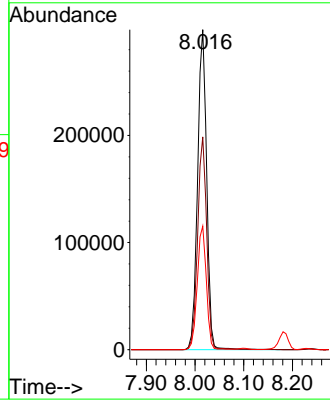
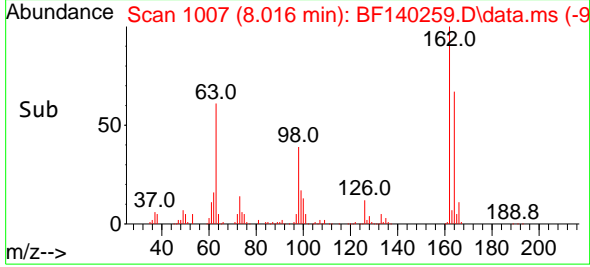


#29
 2,4-Dichlorophenol
 Concen: 39.164 ng
 RT: 8.016 min Scan# 1007
 Delta R.T. 0.000 min
 Lab File: BF140259.D
 Acq: 06 Nov 2024 17:30

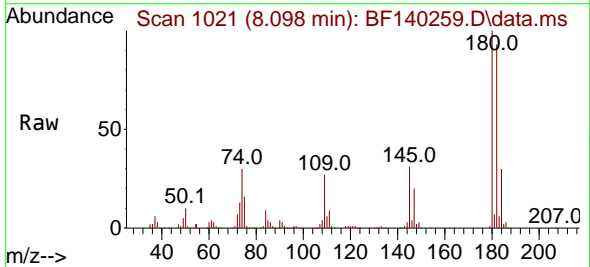
Instrument :
 BNA_F
 ClientSampleId :
 SSTDCCC040EC



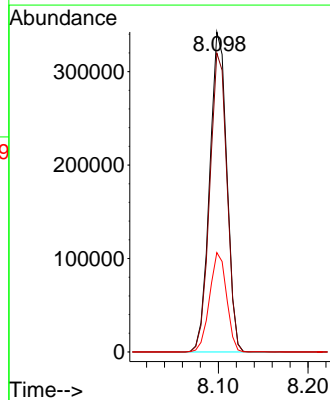
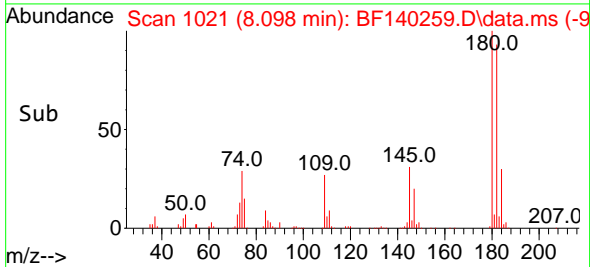
Tgt Ion:162 Resp: 389502
 Ion Ratio Lower Upper
 162 100
 164 66.5 47.5 87.5
 98 38.6 19.5 59.5

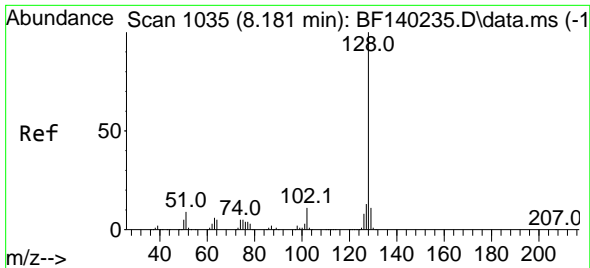


#30
 1,2,4-Trichlorobenzene
 Concen: 38.150 ng
 RT: 8.098 min Scan# 1021
 Delta R.T. 0.000 min
 Lab File: BF140259.D
 Acq: 06 Nov 2024 17:30



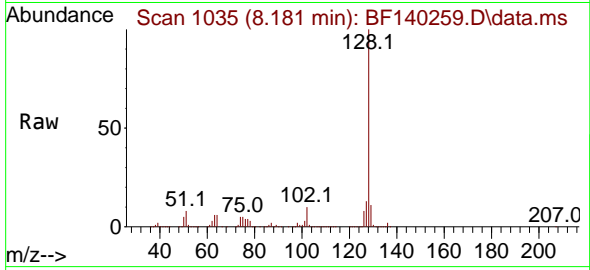
Tgt Ion:180 Resp: 454658
 Ion Ratio Lower Upper
 180 100
 182 93.4 75.9 113.9
 145 31.0 26.1 39.1



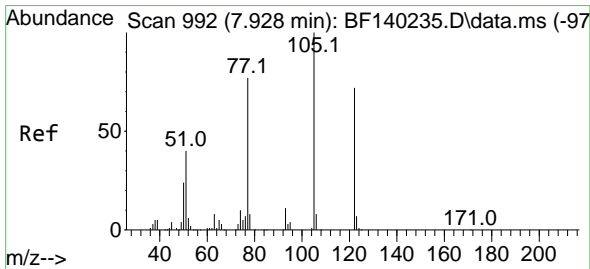
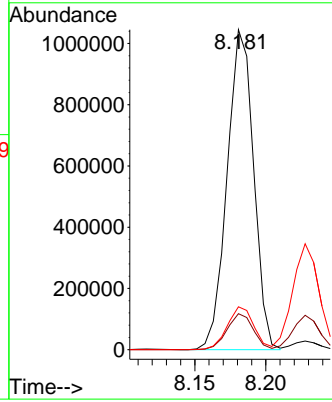
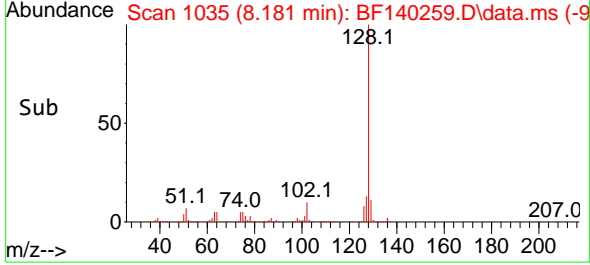


#31
 Naphthalene
 Concen: 37.279 ng
 RT: 8.181 min Scan# 1035
 Delta R.T. 0.000 min
 Lab File: BF140259.D
 Acq: 06 Nov 2024 17:30

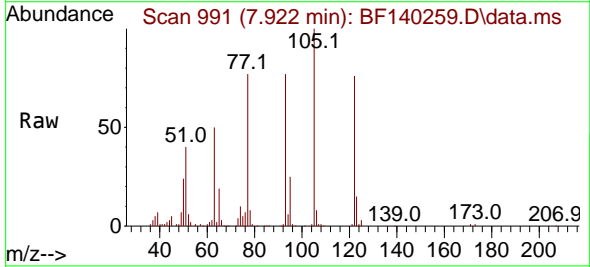
Instrument :
 BNA_F
 ClientSampleId :
 SSTDCCC040EC



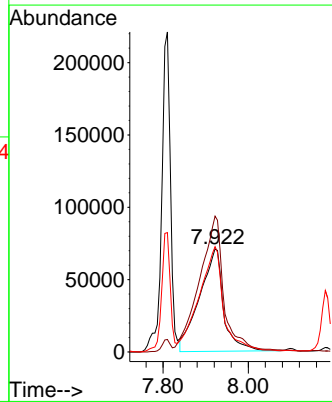
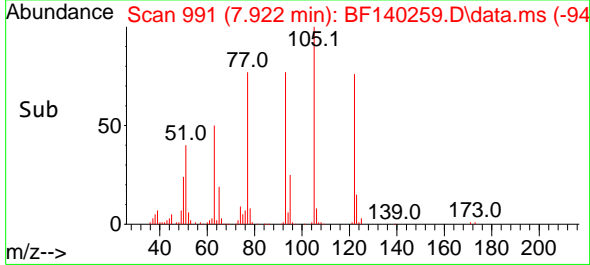
Tgt Ion:128 Resp: 1355014
 Ion Ratio Lower Upper
 128 100
 129 11.2 9.0 13.6
 127 13.4 10.7 16.1

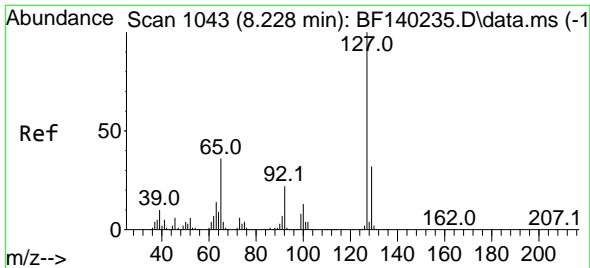


#32
 Benzoic acid
 Concen: 41.836 ng
 RT: 7.922 min Scan# 991
 Delta R.T. -0.006 min
 Lab File: BF140259.D
 Acq: 06 Nov 2024 17:30



Tgt Ion:122 Resp: 276013
 Ion Ratio Lower Upper
 122 100
 105 131.7 112.6 152.6
 77 102.0 84.3 124.3



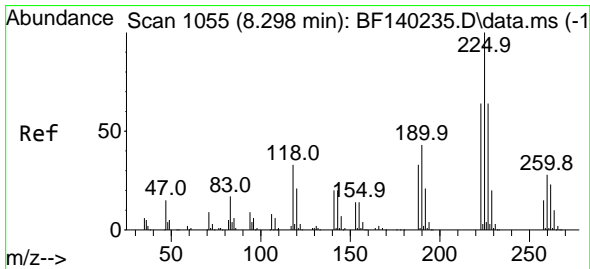
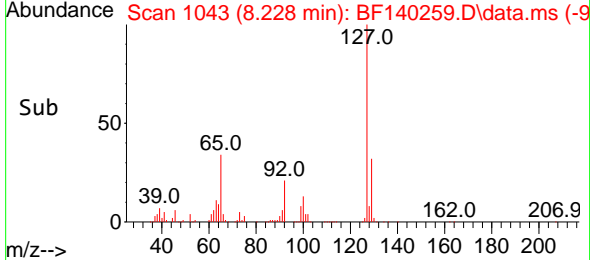
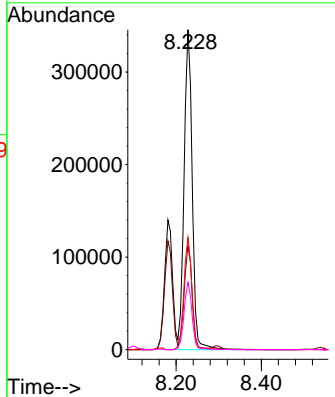
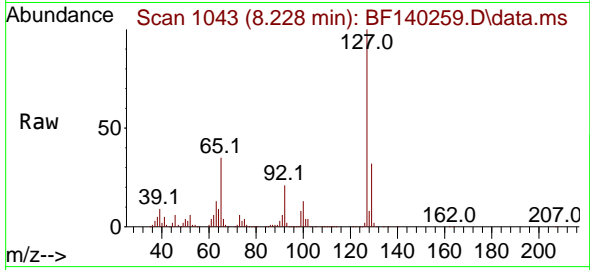


#33
 4-Chloroaniline
 Concen: 38.197 ng
 RT: 8.228 min Scan# 1043
 Delta R.T. 0.000 min
 Lab File: BF140259.D
 Acq: 06 Nov 2024 17:30

Instrument : BNA_F
 ClientSampleId : SSTDCCC040EC

Tgt Ion:127 Resp: 457073

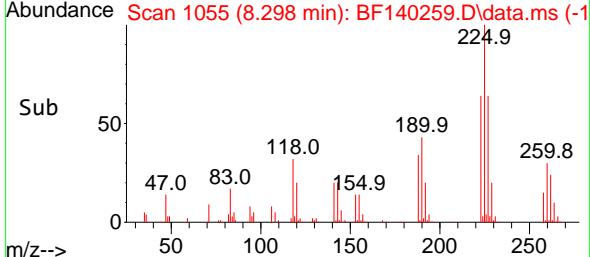
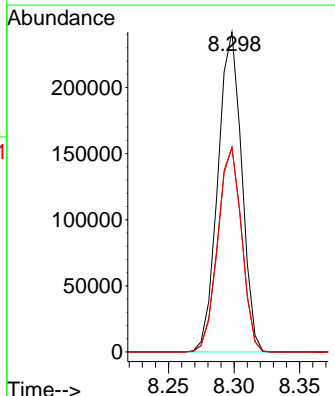
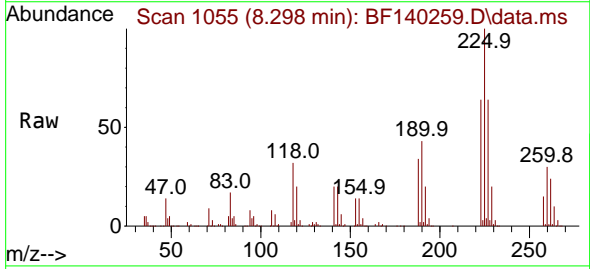
Ion	Ratio	Lower	Upper
127	100		
129	32.5	25.8	38.6
65	35.0	29.0	43.6
92	21.0	17.4	26.0

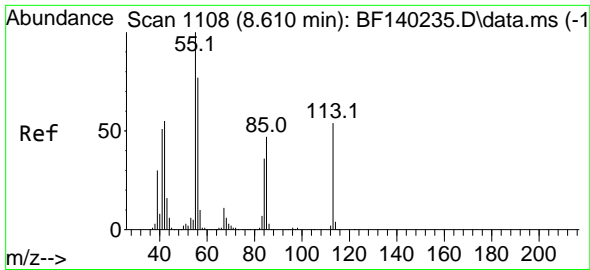


#34
 Hexachlorobutadiene
 Concen: 37.770 ng
 RT: 8.298 min Scan# 1055
 Delta R.T. 0.000 min
 Lab File: BF140259.D
 Acq: 06 Nov 2024 17:30

Tgt Ion:225 Resp: 304672

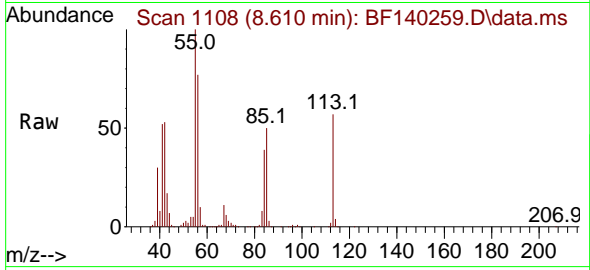
Ion	Ratio	Lower	Upper
225	100		
223	63.9	50.8	76.2
227	64.0	51.0	76.6



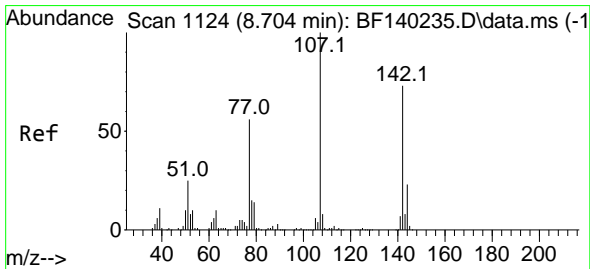
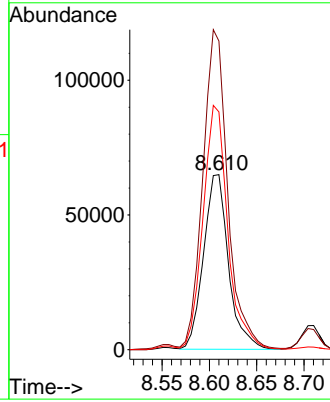
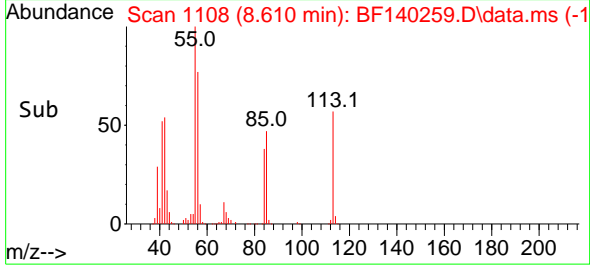


#35
 Caprolactam
 Concen: 39.247 ng
 RT: 8.610 min Scan# 1108
 Delta R.T. 0.000 min
 Lab File: BF140259.D
 Acq: 06 Nov 2024 17:30

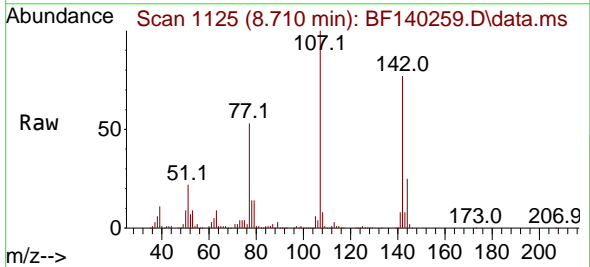
Instrument : BNA_F
 ClientSampleId : SSTDCCC040EC



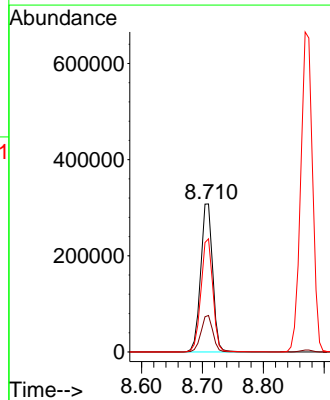
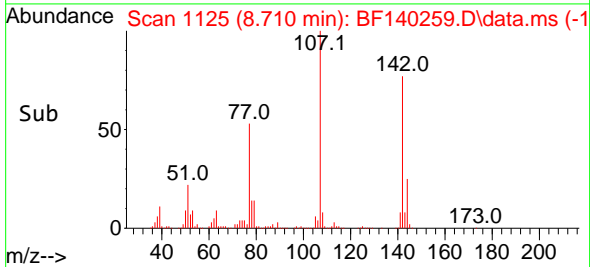
Tgt Ion:113 Resp: 118740
 Ion Ratio Lower Upper
 113 100
 55 176.2 165.2 205.2
 56 135.8 122.1 162.1

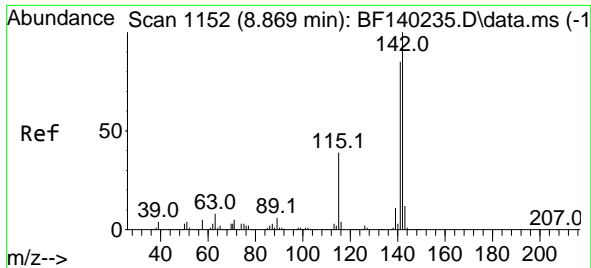


#36
 4-Chloro-3-methylphenol
 Concen: 38.367 ng
 RT: 8.710 min Scan# 1125
 Delta R.T. 0.006 min
 Lab File: BF140259.D
 Acq: 06 Nov 2024 17:30



Tgt Ion:107 Resp: 424846
 Ion Ratio Lower Upper
 107 100
 144 24.6 18.6 27.8
 142 76.5 58.1 87.1

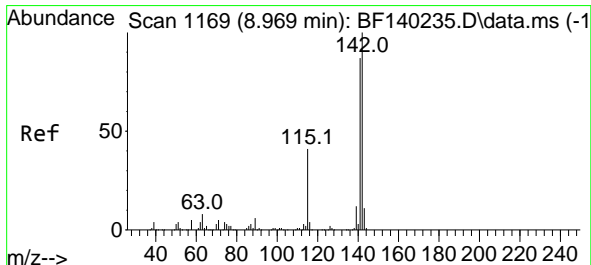
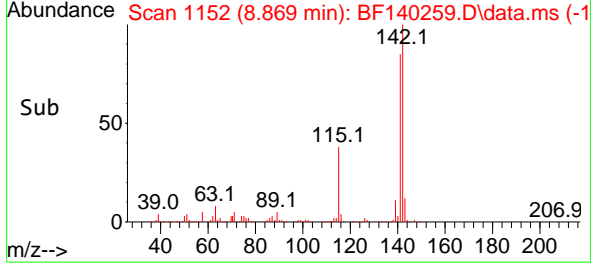
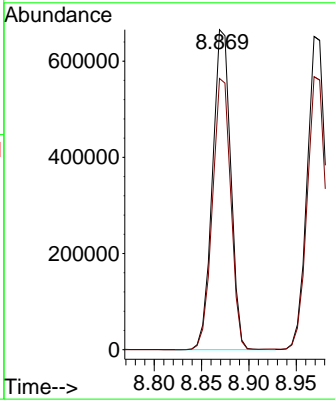
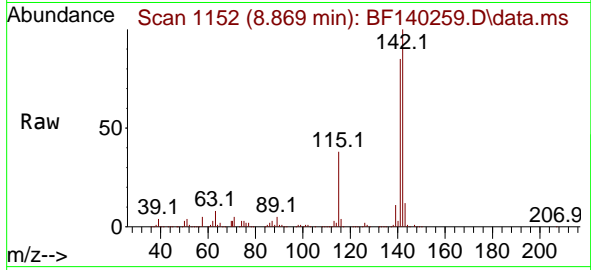




#37
 2-Methylnaphthalene
 Concen: 37.678 ng
 RT: 8.869 min Scan# 1152
 Delta R.T. 0.000 min
 Lab File: BF140259.D
 Acq: 06 Nov 2024 17:30

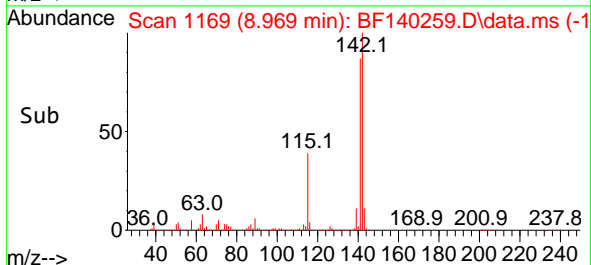
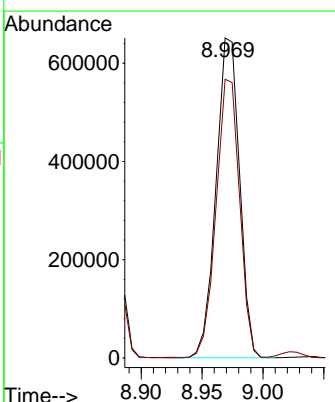
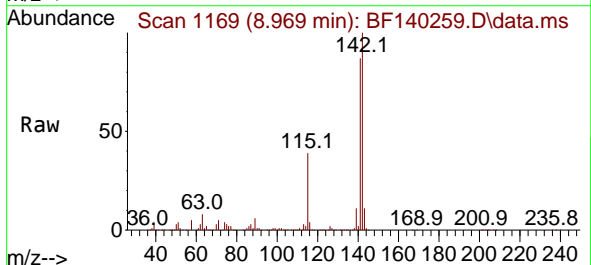
Instrument : BNA_F
 ClientSampleId : SSTDCCC040EC

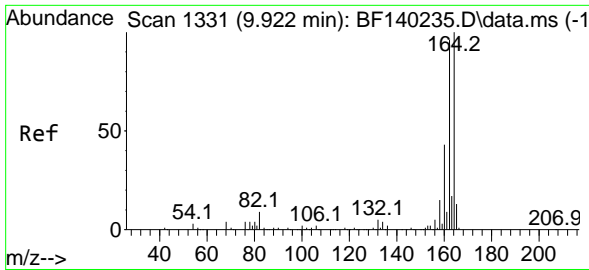
Tgt Ion:142 Resp: 893798
 Ion Ratio Lower Upper
 142 100
 141 84.8 67.8 101.8



#38
 1-Methylnaphthalene
 Concen: 37.612 ng
 RT: 8.969 min Scan# 1169
 Delta R.T. 0.000 min
 Lab File: BF140259.D
 Acq: 06 Nov 2024 17:30

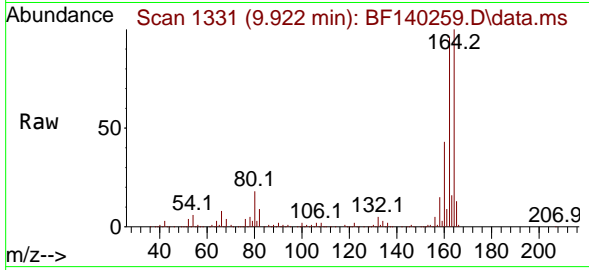
Tgt Ion:142 Resp: 874538
 Ion Ratio Lower Upper
 142 100
 141 87.1 69.7 104.5



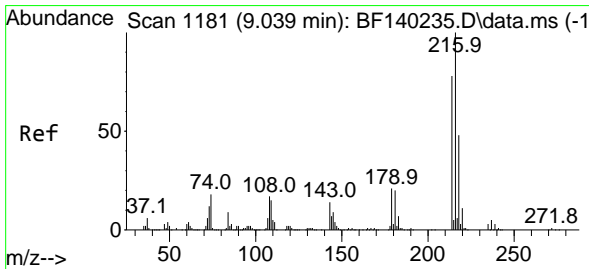
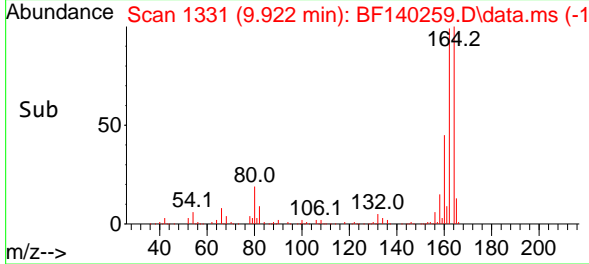
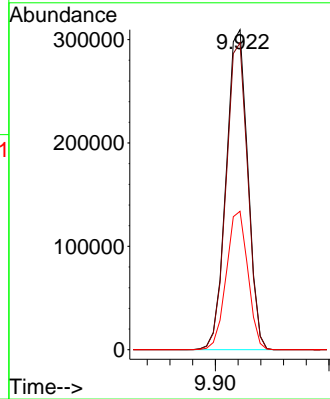


#39
 Acenaphthene-d10
 Concen: 20.000 ng
 RT: 9.922 min Scan# 1111
 Delta R.T. 0.000 min
 Lab File: BF140259.D
 Acq: 06 Nov 2024 17:30

Instrument :
 BNA_F
 ClientSampleId :
 SSTDCCC040EC

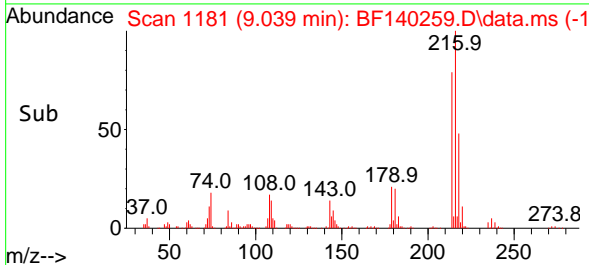
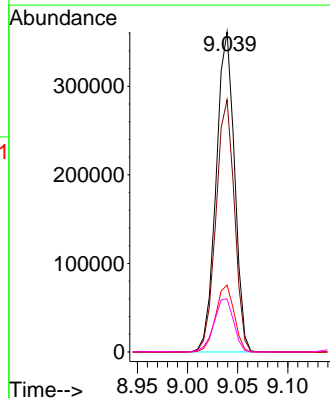
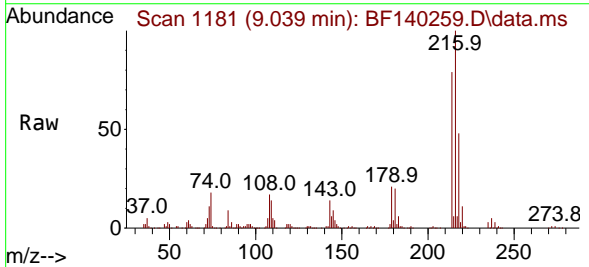


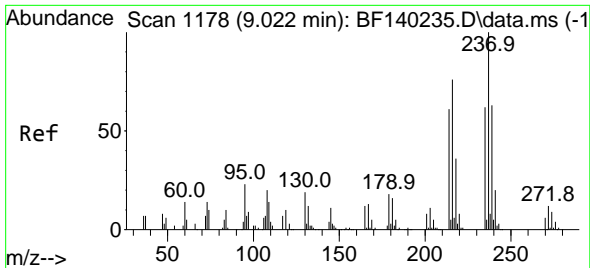
Tgt Ion:164 Resp: 409478
 Ion Ratio Lower Upper
 164 100
 162 95.9 77.0 115.4
 160 43.3 34.1 51.1



#40
 1,2,4,5-Tetrachlorobenzene
 Concen: 38.298 ng
 RT: 9.039 min Scan# 1181
 Delta R.T. 0.000 min
 Lab File: BF140259.D
 Acq: 06 Nov 2024 17:30

Tgt Ion:216 Resp: 459092
 Ion Ratio Lower Upper
 216 100
 214 78.9 62.8 94.2
 179 21.1 17.3 25.9
 108 17.8 15.3 22.9



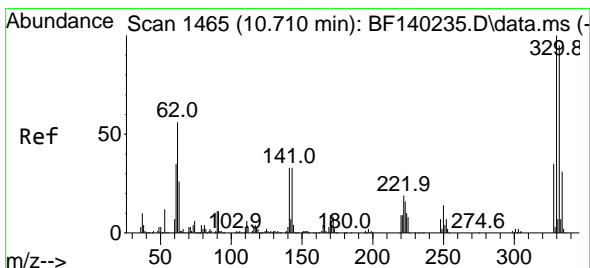
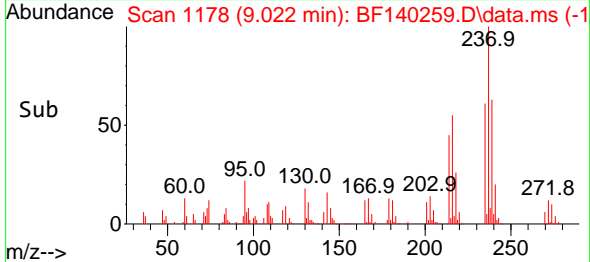
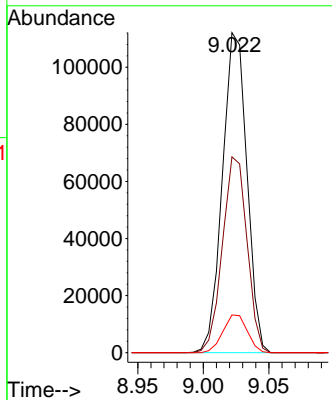
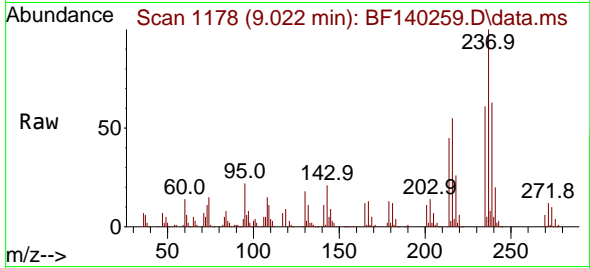


#41
 Hexachlorocyclopentadiene
 Concen: 43.389 ng
 RT: 9.022 min Scan# 1178
 Delta R.T. 0.000 min
 Lab File: BF140259.D
 Acq: 06 Nov 2024 17:30

Instrument :
 BNA_F
 ClientSampleId :
 SSTDCCC040EC

Tgt Ion:237 Resp: 145748

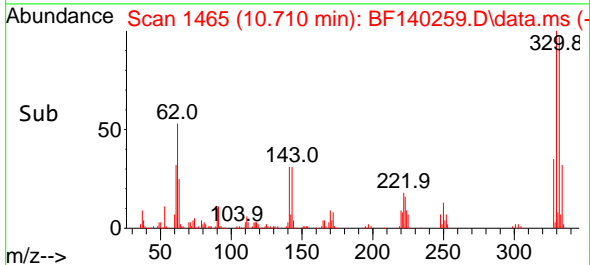
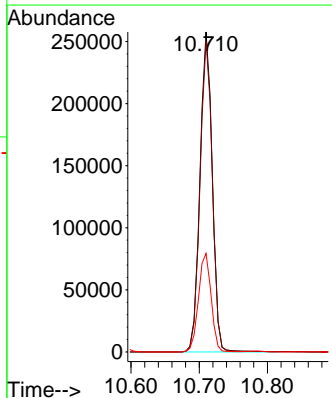
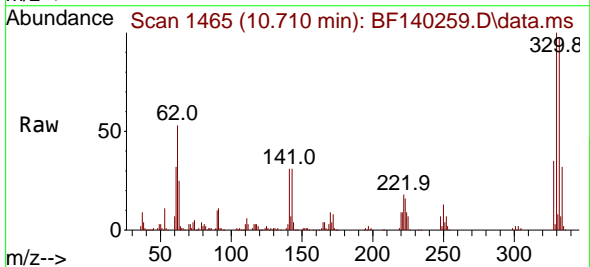
Ion	Ratio	Lower	Upper
237	100		
235	61.2	41.8	81.8
272	11.8	0.0	31.8

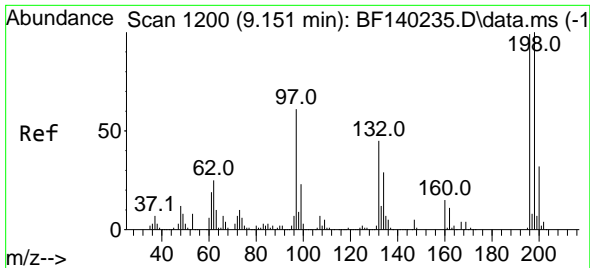


#42
 2,4,6-Tribromophenol
 Concen: 79.926 ng
 RT: 10.710 min Scan# 1465
 Delta R.T. 0.000 min
 Lab File: BF140259.D
 Acq: 06 Nov 2024 17:30

Tgt Ion:330 Resp: 323499

Ion	Ratio	Lower	Upper
330	100		
332	97.1	76.4	114.6
141	31.7	27.0	40.4



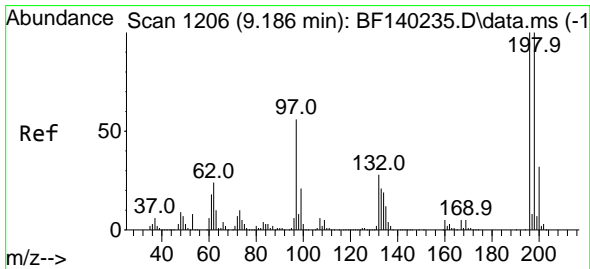
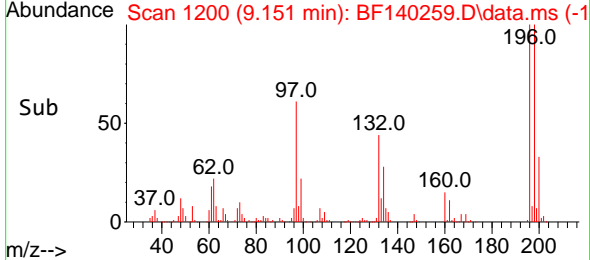
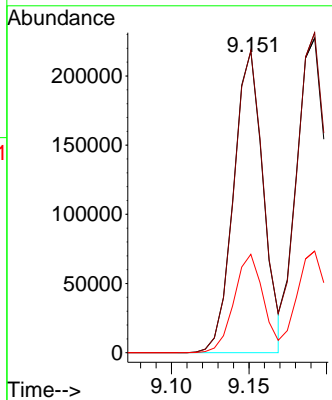
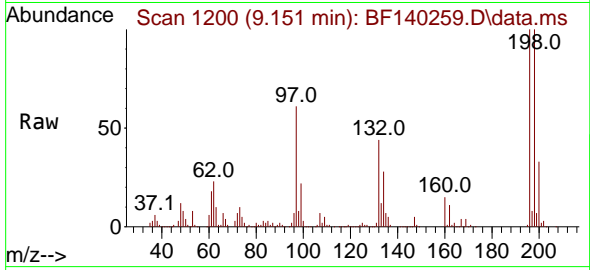


#43
 2,4,6-Trichlorophenol
 Concen: 39.045 ng
 RT: 9.151 min Scan# 11
 Delta R.T. 0.000 min
 Lab File: BF140259.D
 Acq: 06 Nov 2024 17:30

Instrument : BNA_F
 ClientSampleId : SSTDCCC040EC

Tgt Ion:196 Resp: 290045

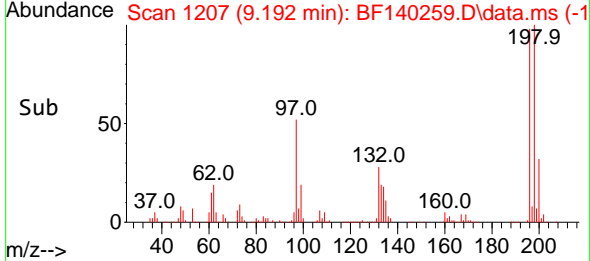
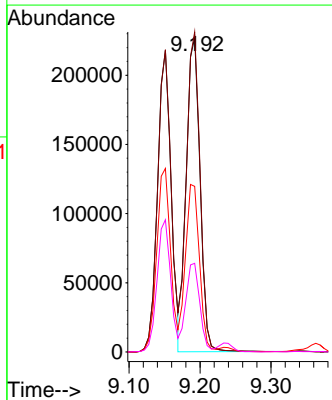
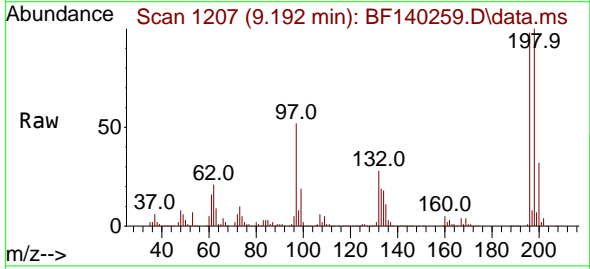
Ion	Ratio	Lower	Upper
196	100		
198	100.3	80.8	121.2
200	32.7	26.0	39.0

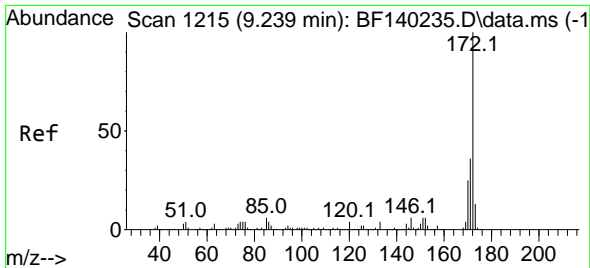


#44
 2,4,5-Trichlorophenol
 Concen: 39.318 ng
 RT: 9.192 min Scan# 1207
 Delta R.T. 0.006 min
 Lab File: BF140259.D
 Acq: 06 Nov 2024 17:30

Tgt Ion:196 Resp: 307099

Ion	Ratio	Lower	Upper
196	100		
198	101.7	80.0	120.0
97	52.6	45.7	68.5
132	28.2	23.0	34.6



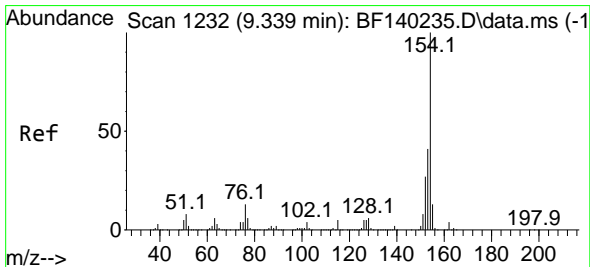
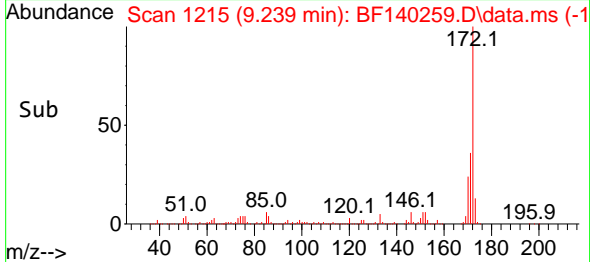
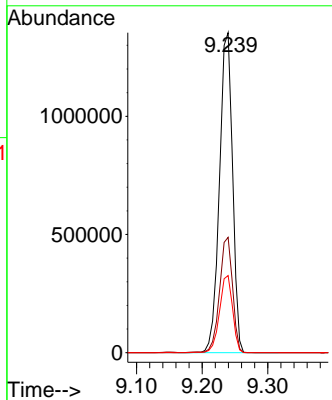
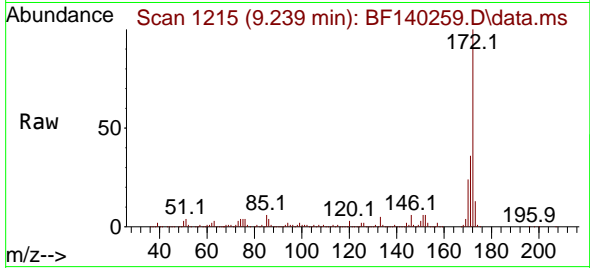


#45
 2-Fluorobiphenyl
 Concen: 72.753 ng
 RT: 9.239 min Scan# 11
 Delta R.T. 0.000 min
 Lab File: BF140259.D
 Acq: 06 Nov 2024 17:30

Instrument :
 BNA_F
 ClientSampleId :
 SSTDCCC040EC

Tgt Ion:172 Resp: 1865647

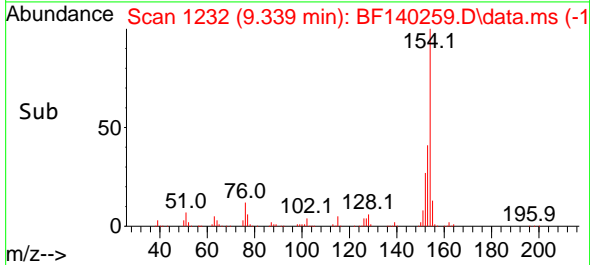
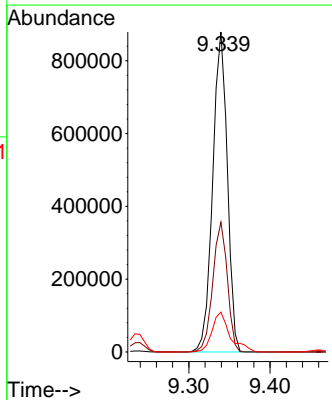
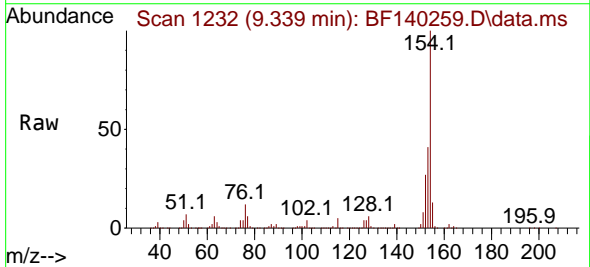
Ion	Ratio	Lower	Upper
172	100		
171	36.0	28.8	43.2
170	24.1	19.6	29.4

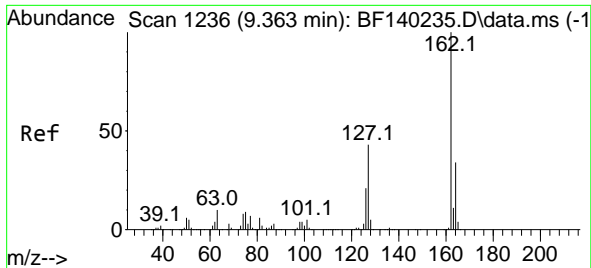


#46
 1,1'-Biphenyl
 Concen: 37.116 ng
 RT: 9.339 min Scan# 1232
 Delta R.T. 0.000 min
 Lab File: BF140259.D
 Acq: 06 Nov 2024 17:30

Tgt Ion:154 Resp: 1098565

Ion	Ratio	Lower	Upper
154	100		
153	40.5	20.8	60.8
76	12.5	0.0	32.6



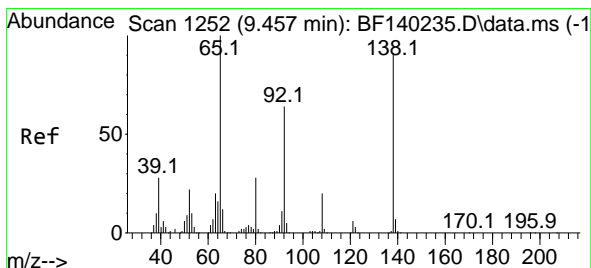
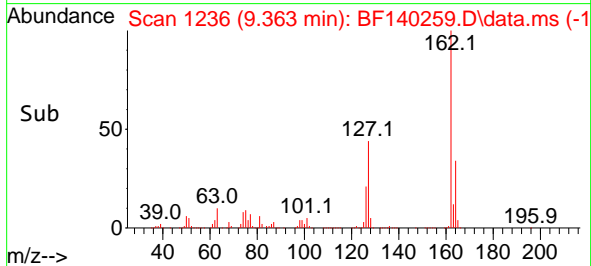
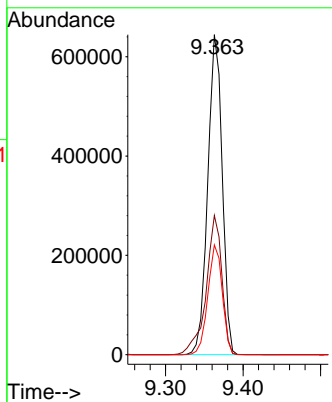
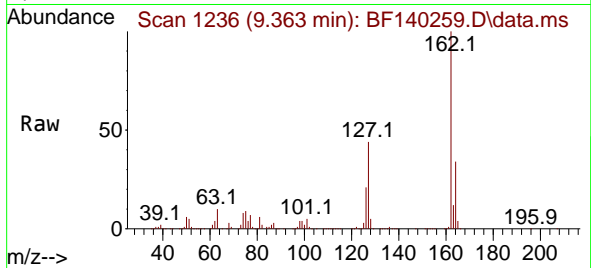


#47
 2-Chloronaphthalene
 Concen: 37.492 ng
 RT: 9.363 min Scan# 11
 Delta R.T. 0.000 min
 Lab File: BF140259.D
 Acq: 06 Nov 2024 17:30

Instrument :
 BNA_F
 ClientSampleId :
 SSTDCCC040EC

Tgt Ion:162 Resp: 835207

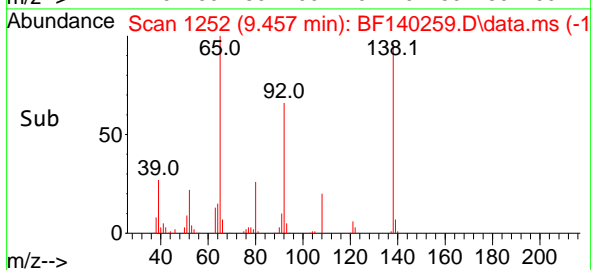
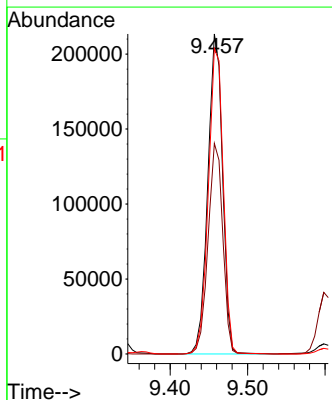
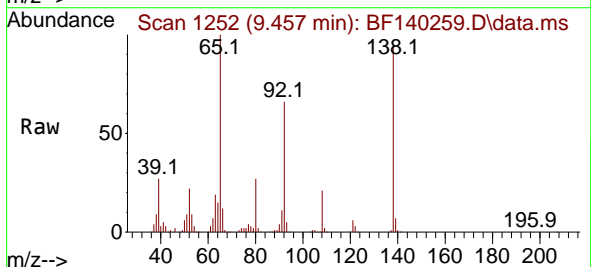
Ion	Ratio	Lower	Upper
162	100		
127	43.5	34.8	52.2
164	34.3	27.3	40.9

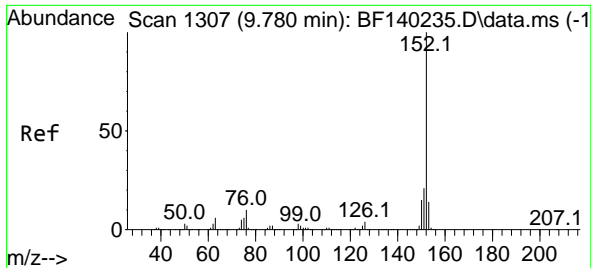


#48
 2-Nitroaniline
 Concen: 37.801 ng
 RT: 9.457 min Scan# 1252
 Delta R.T. 0.000 min
 Lab File: BF140259.D
 Acq: 06 Nov 2024 17:30

Tgt Ion: 65 Resp: 281613

Ion	Ratio	Lower	Upper
65	100		
92	65.8	51.6	77.4
138	95.4	73.0	109.6



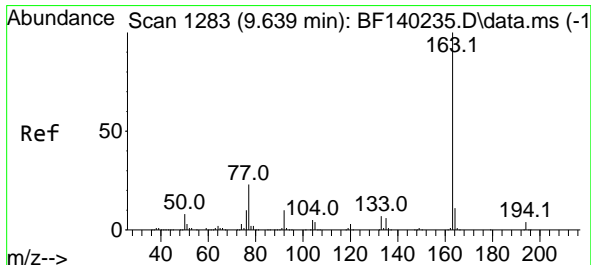
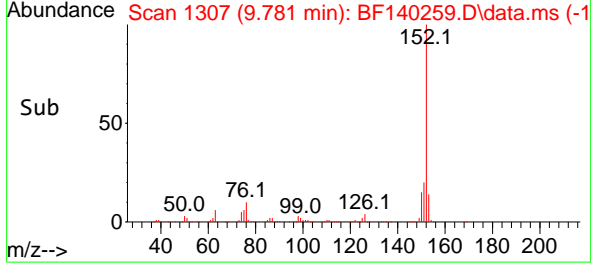
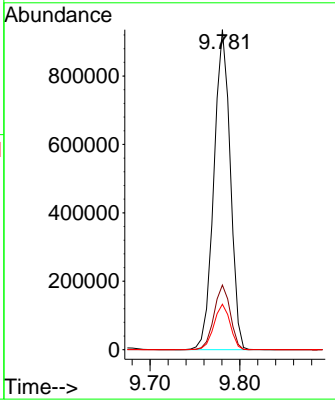
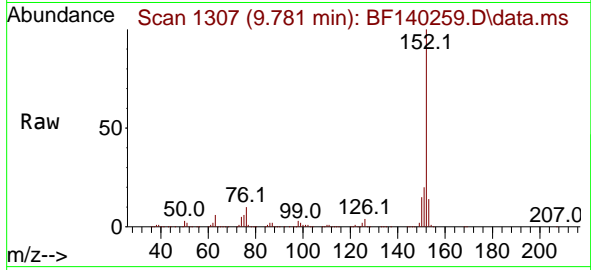


#49
 Acenaphthylene
 Concen: 37.577 ng
 RT: 9.781 min Scan# 11
 Delta R.T. 0.000 min
 Lab File: BF140259.D
 Acq: 06 Nov 2024 17:30

Instrument : BNA_F
 ClientSampleId : SSTDCCC040EC

Tgt Ion:152 Resp: 1185120

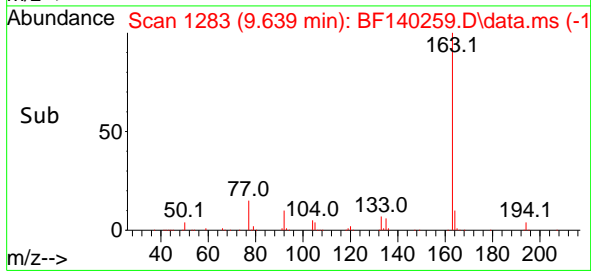
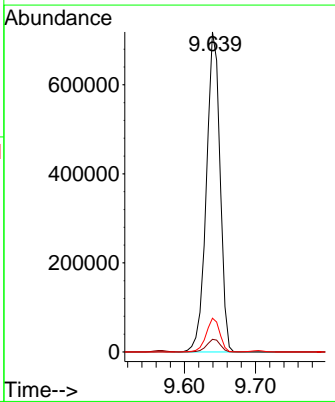
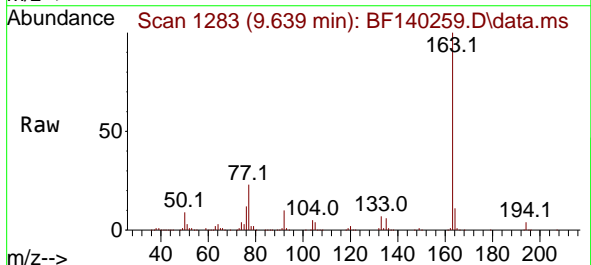
Ion	Ratio	Lower	Upper
152	100		
151	20.2	16.4	24.6
153	14.2	11.1	16.7

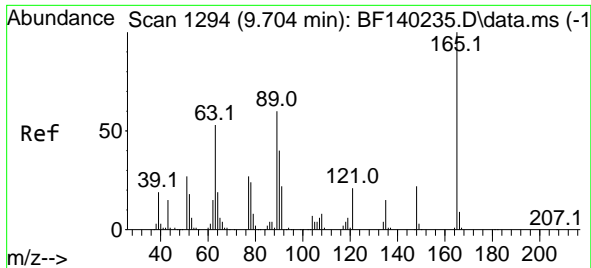


#50
 Dimethylphthalate
 Concen: 38.172 ng
 RT: 9.639 min Scan# 1283
 Delta R.T. 0.000 min
 Lab File: BF140259.D
 Acq: 06 Nov 2024 17:30

Tgt Ion:163 Resp: 962623

Ion	Ratio	Lower	Upper
163	100		
194	4.0	3.2	4.8
164	10.5	8.6	13.0



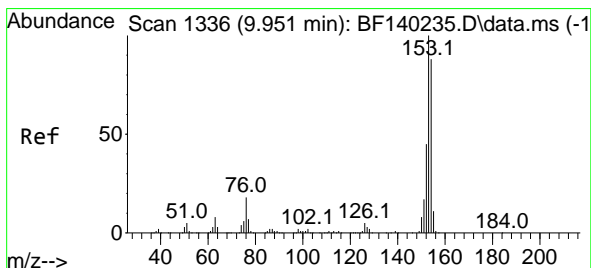
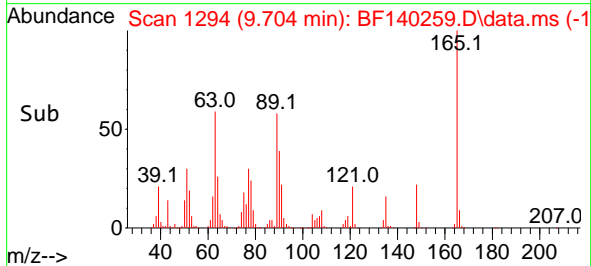
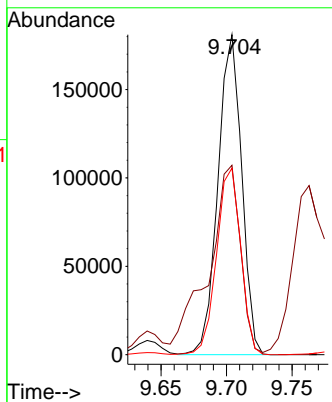
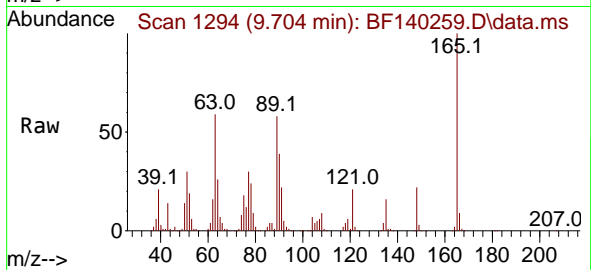


#51
 2,6-Dinitrotoluene
 Concen: 38.401 ng
 RT: 9.704 min Scan# 11
 Delta R.T. 0.000 min
 Lab File: BF140259.D
 Acq: 06 Nov 2024 17:30

Instrument :
 BNA_F
 ClientSampleId :
 SSTDCCC040EC

Tgt Ion:165 Resp: 227631

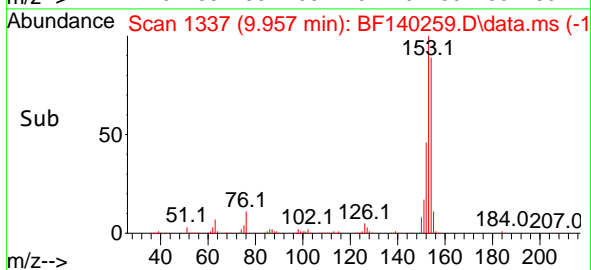
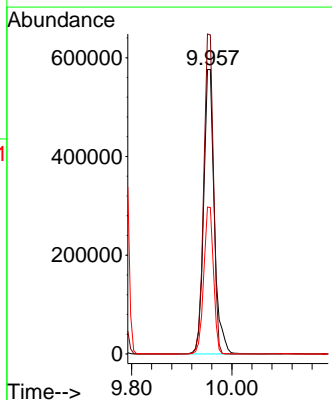
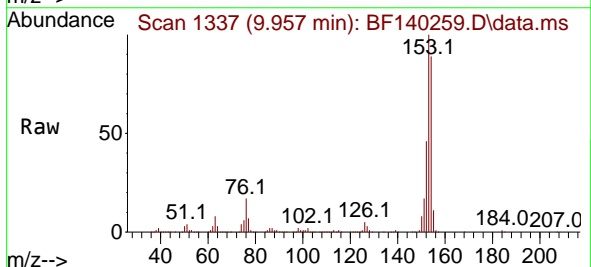
Ion	Ratio	Lower	Upper
165	100		
63	59.2	48.8	73.2
89	58.3	48.1	72.1

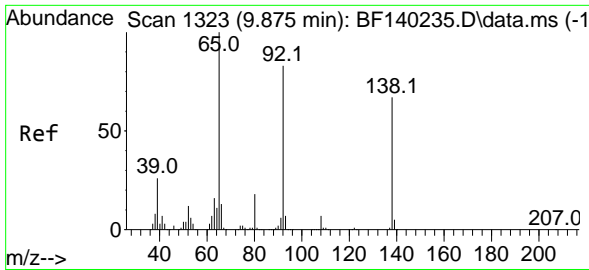


#52
 Acenaphthene
 Concen: 37.985 ng
 RT: 9.957 min Scan# 1337
 Delta R.T. 0.006 min
 Lab File: BF140259.D
 Acq: 06 Nov 2024 17:30

Tgt Ion:154 Resp: 849724

Ion	Ratio	Lower	Upper
154	100		
153	112.2	91.3	136.9
152	51.5	41.4	62.2

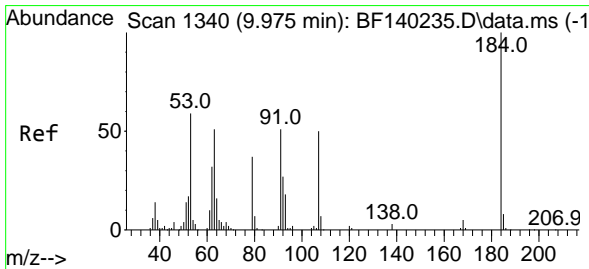
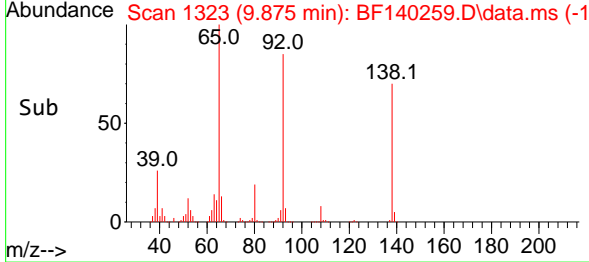
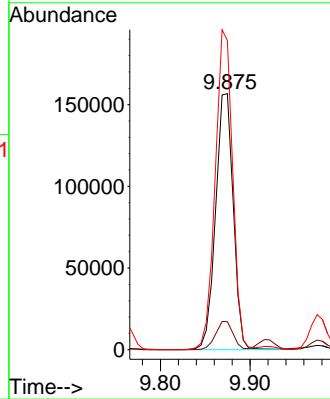
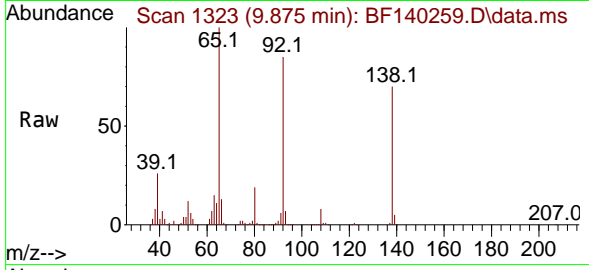




#53
 3-Nitroaniline
 Concen: 38.475 ng
 RT: 9.875 min Scan# 11
 Delta R.T. 0.000 min
 Lab File: BF140259.D
 Acq: 06 Nov 2024 17:30

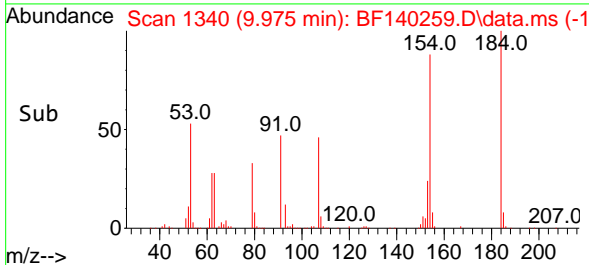
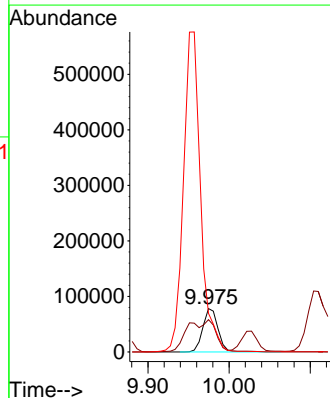
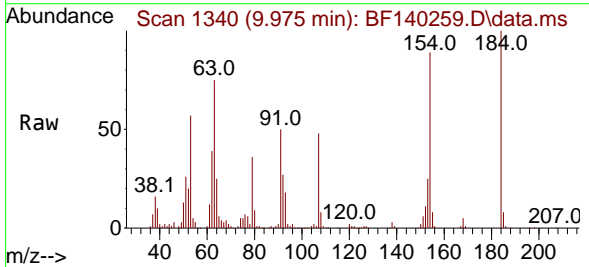
Instrument :
 BNA_F
 ClientSampleId :
 SSTDCCC040EC

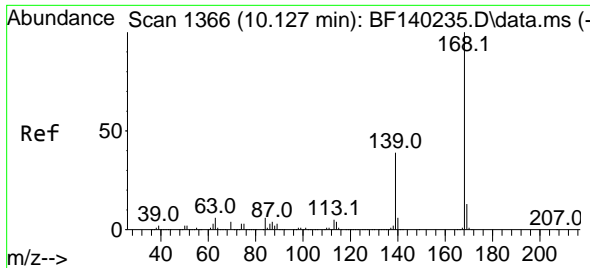
Tgt Ion:138 Resp: 214752
 Ion Ratio Lower Upper
 138 100
 108 11.0 8.8 13.2
 92 120.7 100.0 150.0



#54
 2,4-Dinitrophenol
 Concen: 38.787 ng
 RT: 9.975 min Scan# 1340
 Delta R.T. -0.000 min
 Lab File: BF140259.D
 Acq: 06 Nov 2024 17:30

Tgt Ion:184 Resp: 102884
 Ion Ratio Lower Upper
 184 100
 63 74.6 60.1 90.1
 154 88.9 66.3 99.5

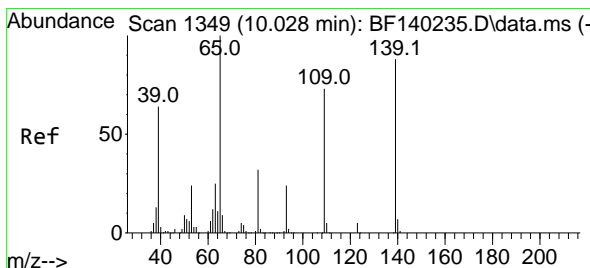
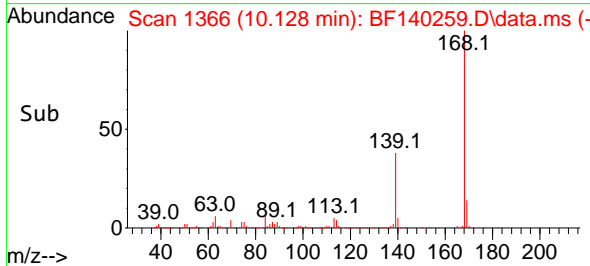
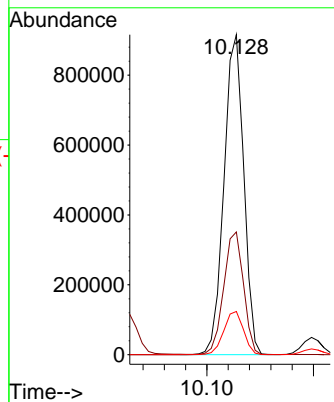
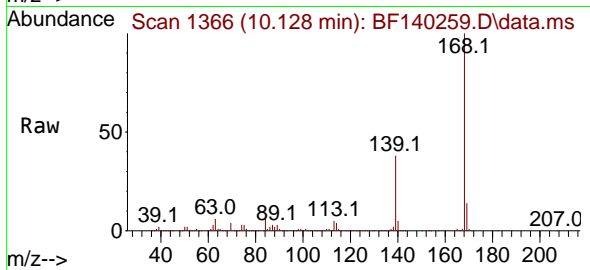




#55
 Dibenzofuran
 Concen: 37.593 ng
 RT: 10.128 min Scan# 11
 Delta R.T. 0.001 min
 Lab File: BF140259.D
 Acq: 06 Nov 2024 17:30

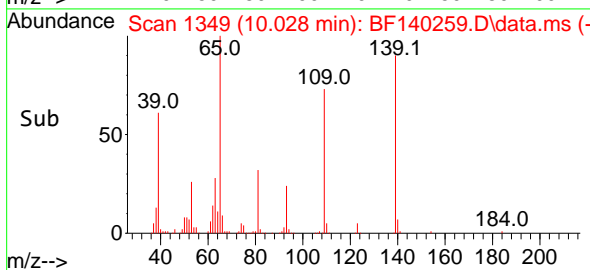
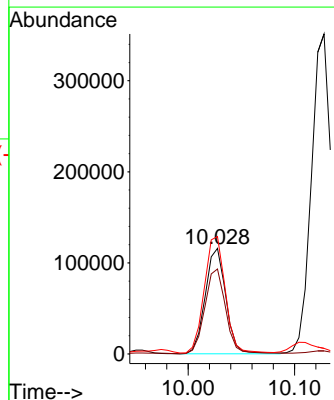
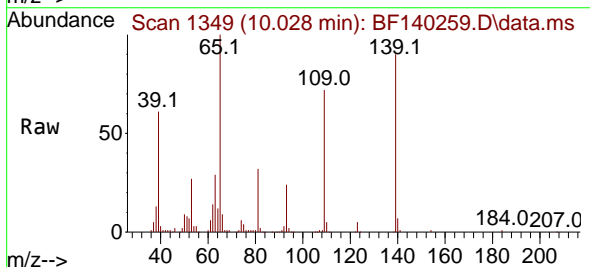
Instrument :
 BNA_F
 ClientSampleId :
 SSTDCCC040EC

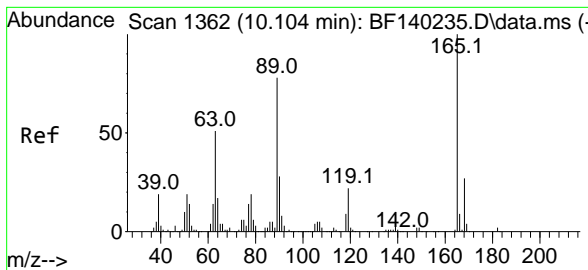
Tgt Ion:168 Resp: 1175938
 Ion Ratio Lower Upper
 168 100
 139 38.4 31.5 47.3
 169 13.5 10.6 15.8



#56
 4-Nitrophenol
 Concen: 39.908 ng
 RT: 10.028 min Scan# 1349
 Delta R.T. 0.000 min
 Lab File: BF140259.D
 Acq: 06 Nov 2024 17:30

Tgt Ion:139 Resp: 156624
 Ion Ratio Lower Upper
 139 100
 109 80.5 63.8 103.8
 65 111.3 94.7 134.7



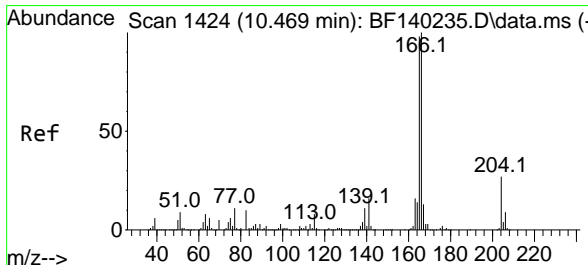
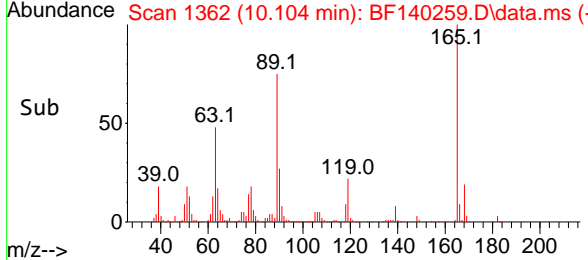
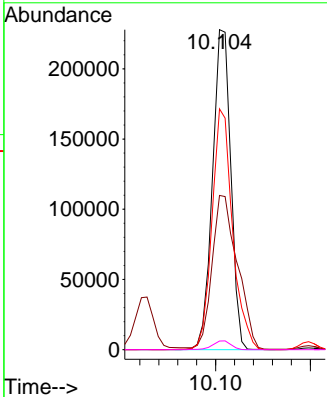
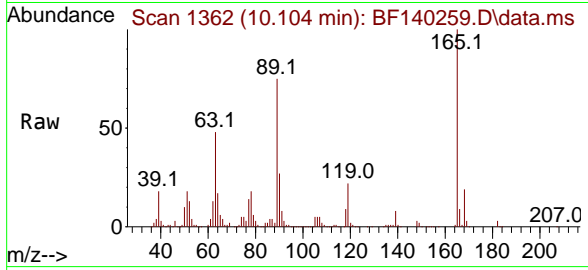


#57
 2,4-Dinitrotoluene
 Concen: 39.772 ng
 RT: 10.104 min Scan# 11
 Delta R.T. 0.000 min
 Lab File: BF140259.D
 Acq: 06 Nov 2024 17:30

Instrument :
 BNA_F
 ClientSampleId :
 SSTDCCC040EC

Tgt Ion:165 Resp: 305940

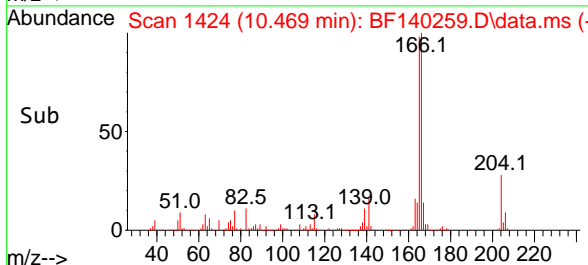
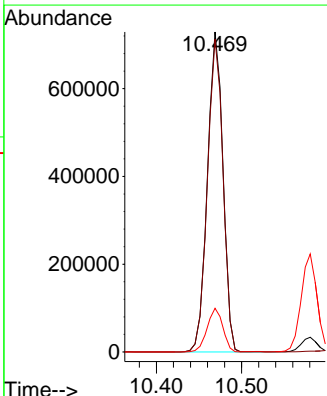
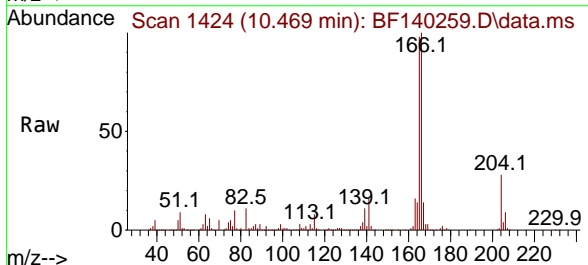
Ion	Ratio	Lower	Upper
165	100		
63	48.2	41.3	61.9
89	75.2	62.6	94.0
182	2.7	2.0	3.0

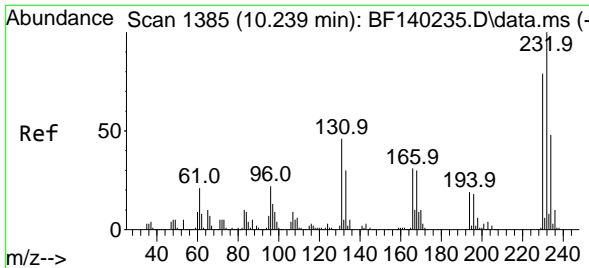


#58
 Fluorene
 Concen: 37.161 ng
 RT: 10.469 min Scan# 1424
 Delta R.T. 0.000 min
 Lab File: BF140259.D
 Acq: 06 Nov 2024 17:30

Tgt Ion:166 Resp: 925327

Ion	Ratio	Lower	Upper
166	100		
165	97.8	78.7	118.1
167	13.6	10.8	16.2



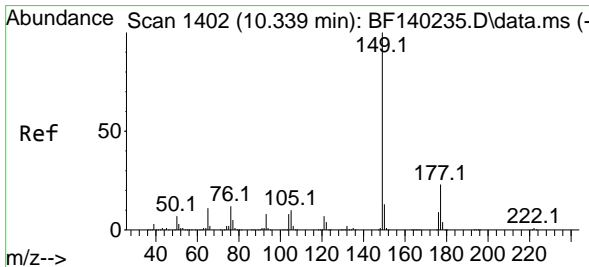
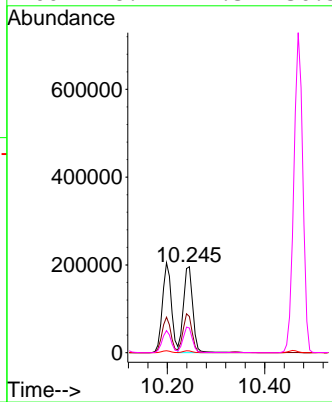
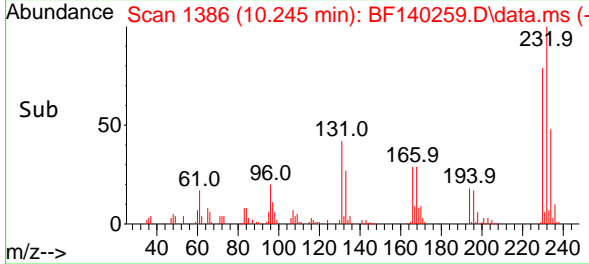
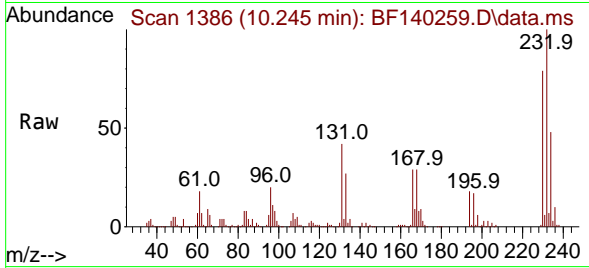


#59
 2,3,4,6-Tetrachlorophenol
 Concen: 40.406 ng
 RT: 10.245 min Scan# 11
 Delta R.T. 0.006 min
 Lab File: BF140259.D
 Acq: 06 Nov 2024 17:30

Instrument :
 BNA_F
 ClientSampleId :
 SSTDCCC040EC

Tgt Ion:232 Resp: 258539

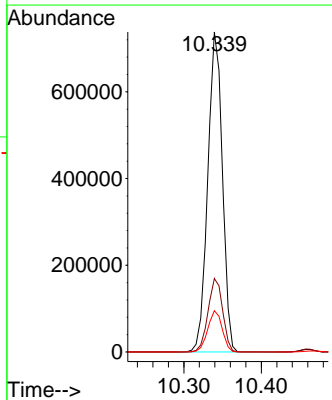
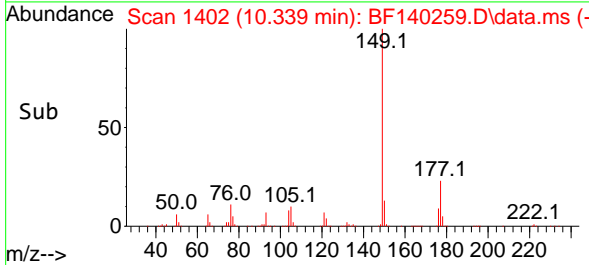
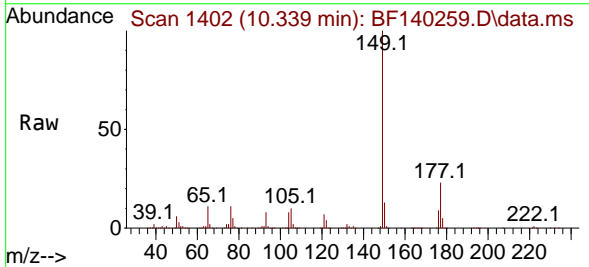
Ion	Ratio	Lower	Upper
232	100		
131	43.5	37.2	55.8
130	2.2	1.8	2.8
166	28.9	24.3	36.5

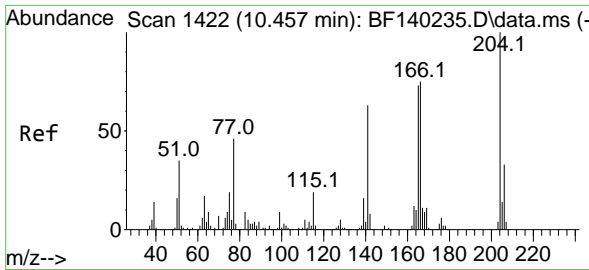


#60
 Diethylphthalate
 Concen: 38.534 ng
 RT: 10.339 min Scan# 1402
 Delta R.T. 0.000 min
 Lab File: BF140259.D
 Acq: 06 Nov 2024 17:30

Tgt Ion:149 Resp: 965662

Ion	Ratio	Lower	Upper
149	100		
177	23.0	18.1	27.1
150	12.9	10.2	15.4



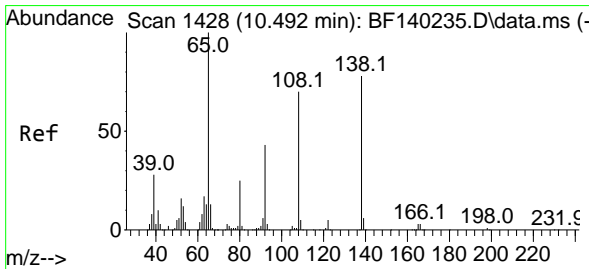
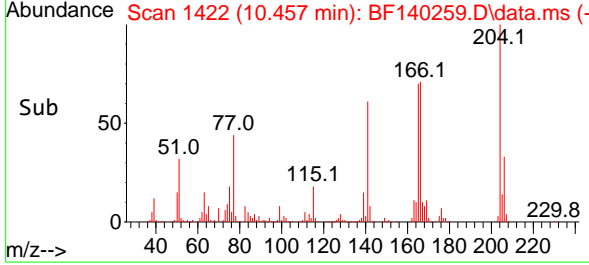
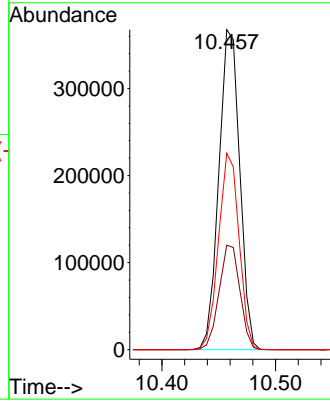
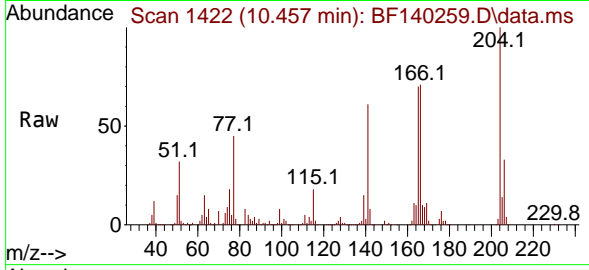


#61
 4-Chlorophenyl-phenylether
 Concen: 37.509 ng
 RT: 10.457 min Scan# 1422
 Delta R.T. 0.000 min
 Lab File: BF140259.D
 Acq: 06 Nov 2024 17:30

Instrument :
 BNA_F
 ClientSampleId :
 SSTDCCC040EC

Tgt Ion:204 Resp: 470720

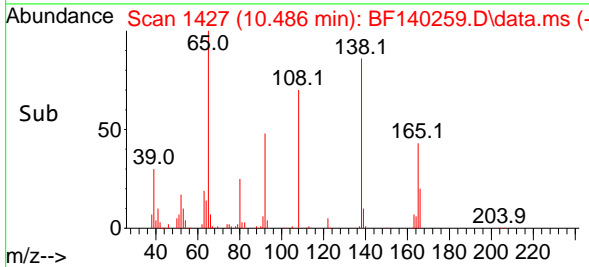
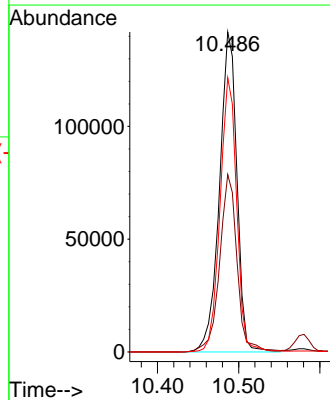
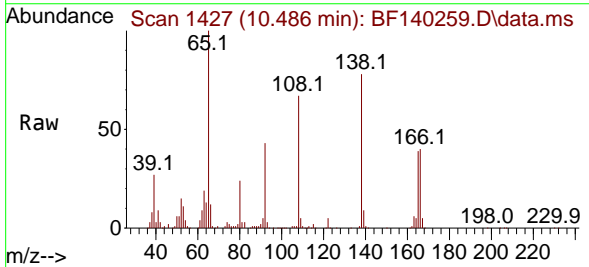
Ion	Ratio	Lower	Upper
204	100		
206	32.6	26.2	39.4
141	61.4	50.3	75.5

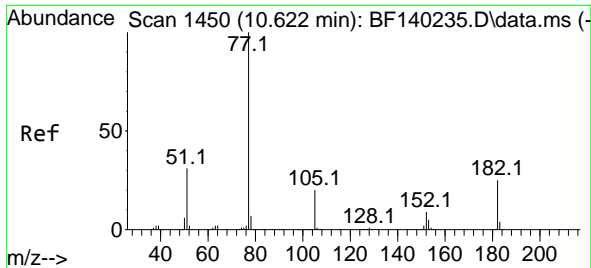


#62
 4-Nitroaniline
 Concen: 38.289 ng
 RT: 10.486 min Scan# 1427
 Delta R.T. -0.006 min
 Lab File: BF140259.D
 Acq: 06 Nov 2024 17:30

Tgt Ion:138 Resp: 212382

Ion	Ratio	Lower	Upper
138	100		
92	55.4	35.3	75.3
108	85.7	70.1	110.1

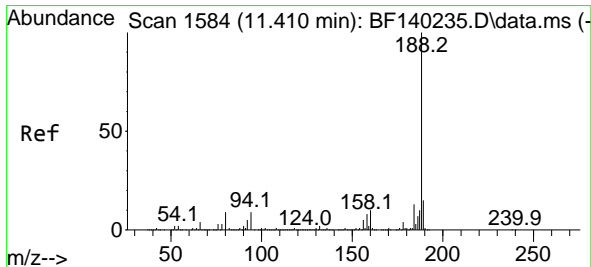
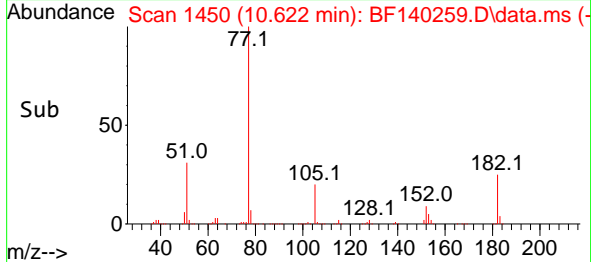
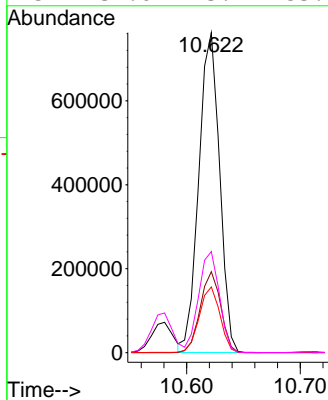
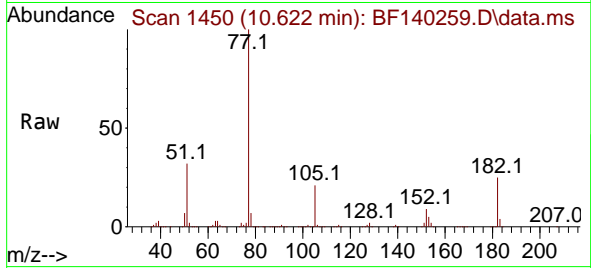




#63
 Azobenzene
 Concen: 37.206 ng
 RT: 10.622 min Scan# 14
 Delta R.T. 0.000 min
 Lab File: BF140259.D
 Acq: 06 Nov 2024 17:30

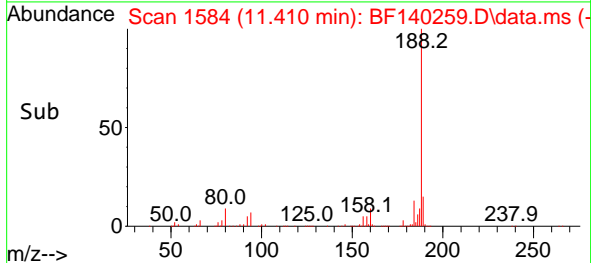
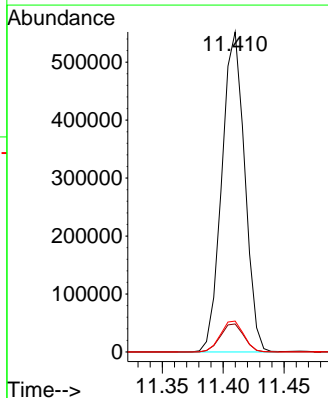
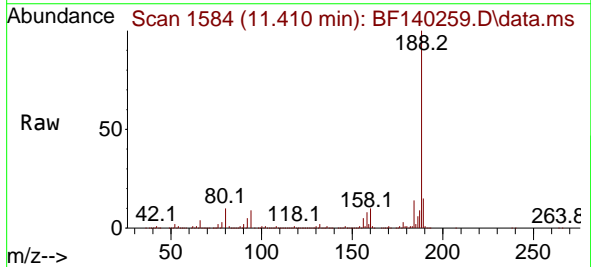
Instrument : BNA_F
 ClientSampleId : SSTDCCC040EC

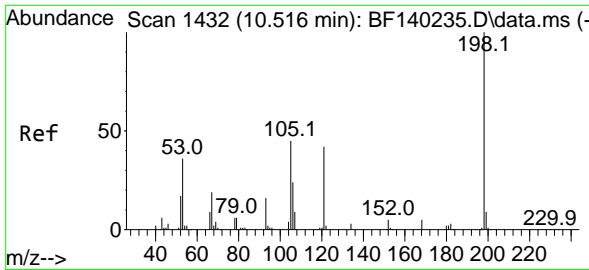
Tgt Ion	Resp	Lower	Upper
77	100		
182	25.3	4.7	44.7
105	20.6	0.0	40.0
51	31.6	13.2	53.2



#64
 Phenanthrene-d10
 Concen: 20.000 ng
 RT: 11.410 min Scan# 1584
 Delta R.T. 0.000 min
 Lab File: BF140259.D
 Acq: 06 Nov 2024 17:30

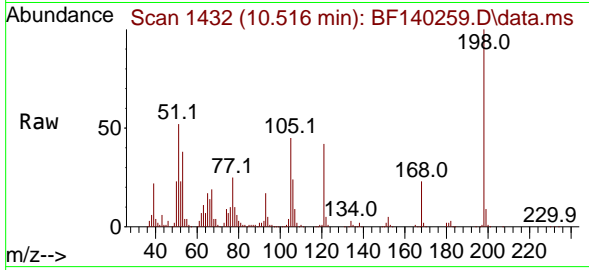
Tgt Ion	Resp	Lower	Upper
188	100		
94	8.8	6.9	10.3
80	9.7	7.5	11.3



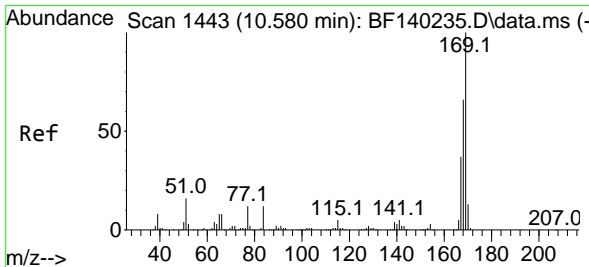
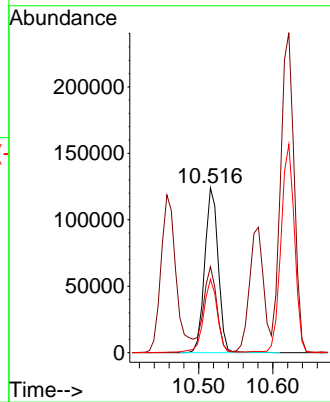
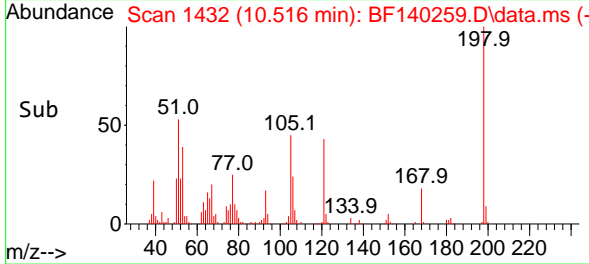


#65
 4,6-Dinitro-2-methylphenol
 Concen: 41.410 ng
 RT: 10.516 min Scan# 1432
 Delta R.T. -0.000 min
 Lab File: BF140259.D
 Acq: 06 Nov 2024 17:30

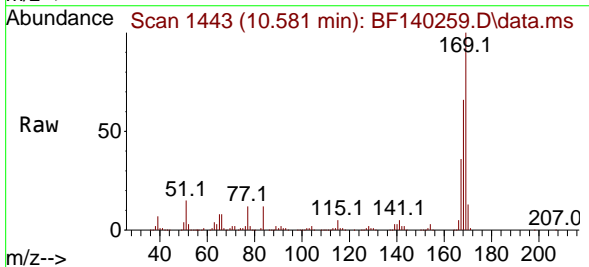
Instrument :
 BNA_F
 ClientSampleId :
 SSTDCCC040EC



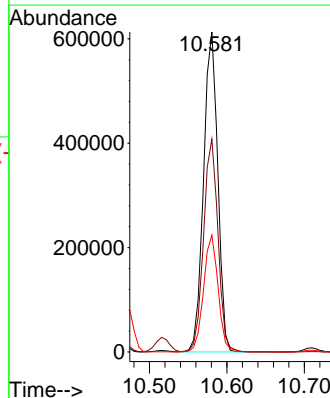
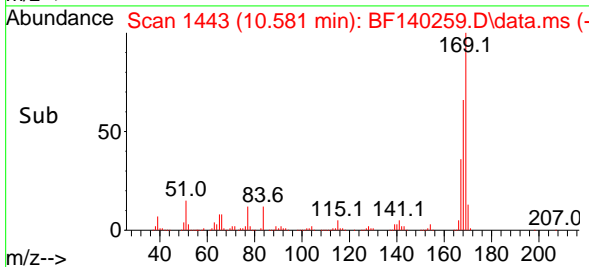
Tgt Ion:198 Resp: 157047
 Ion Ratio Lower Upper
 198 100
 51 52.2 34.0 74.0
 105 44.5 25.1 65.1

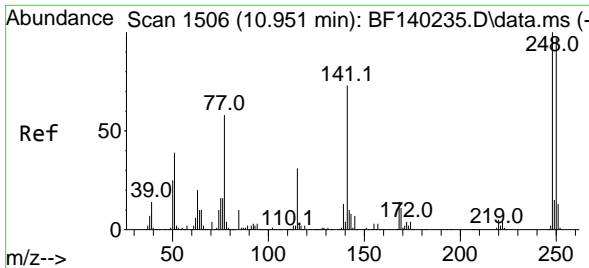


#66
 n-Nitrosodiphenylamine
 Concen: 37.573 ng
 RT: 10.581 min Scan# 1443
 Delta R.T. 0.000 min
 Lab File: BF140259.D
 Acq: 06 Nov 2024 17:30



Tgt Ion:169 Resp: 780352
 Ion Ratio Lower Upper
 169 100
 168 66.5 53.0 79.6
 167 36.5 29.4 44.2



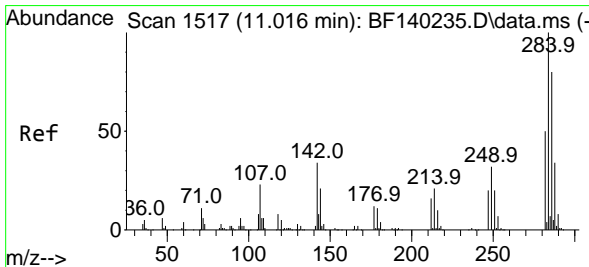
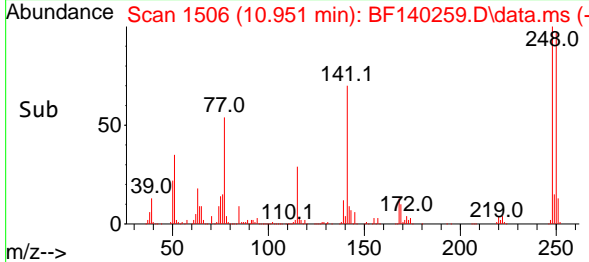
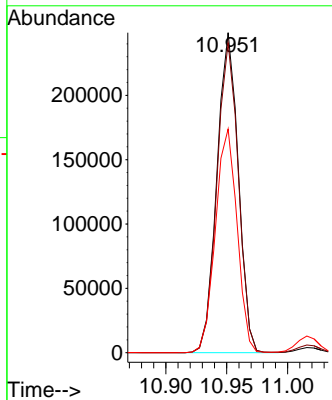
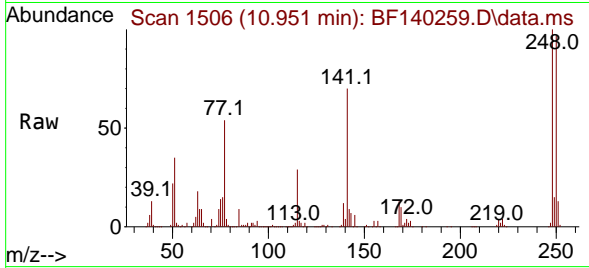


#67
 4-Bromophenyl-phenylether
 Concen: 39.202 ng
 RT: 10.951 min Scan# 1506
 Delta R.T. 0.000 min
 Lab File: BF140259.D
 Acq: 06 Nov 2024 17:30

Instrument :
 BNA_F
 ClientSampleId :
 SSTDCCC040EC

Tgt Ion:248 Resp: 304827

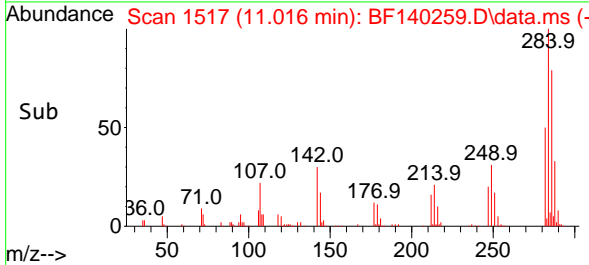
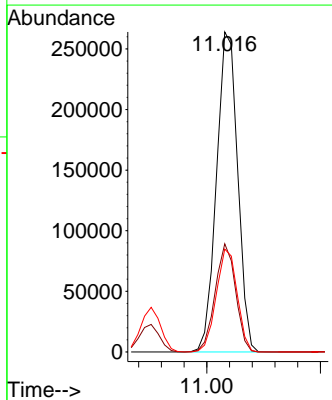
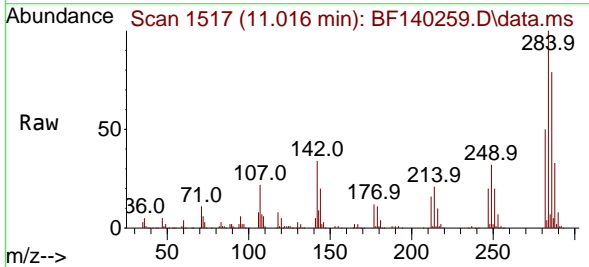
Ion	Ratio	Lower	Upper
248	100		
250	96.8	77.9	116.9
141	69.9	58.6	88.0

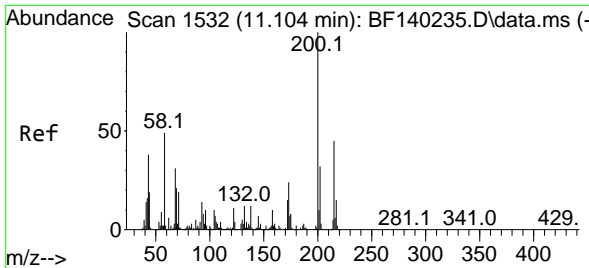


#68
 Hexachlorobenzene
 Concen: 38.571 ng
 RT: 11.016 min Scan# 1517
 Delta R.T. 0.000 min
 Lab File: BF140259.D
 Acq: 06 Nov 2024 17:30

Tgt Ion:284 Resp: 341865

Ion	Ratio	Lower	Upper
284	100		
142	33.8	27.5	41.3
249	32.1	26.2	39.2



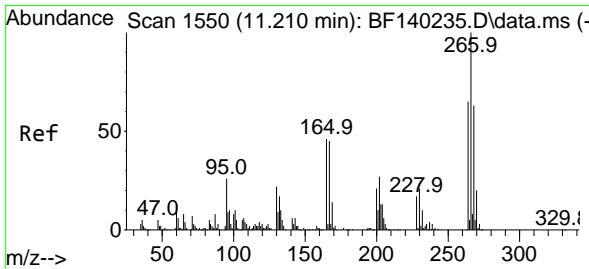
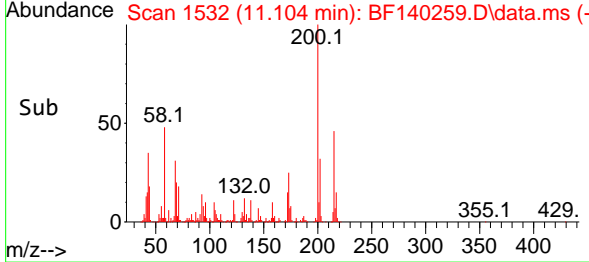
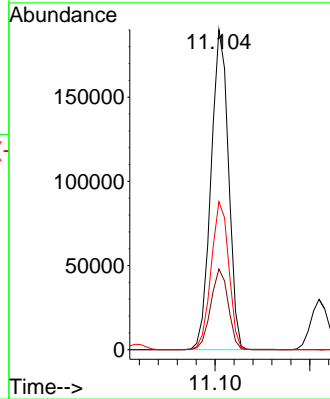
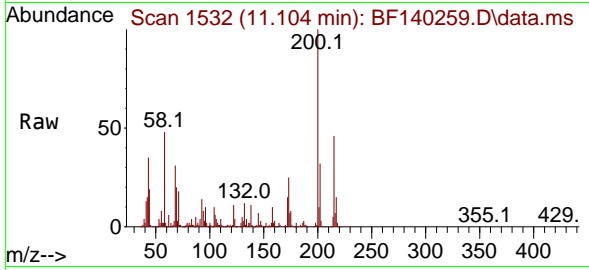


#69
 Atrazine
 Concen: 42.854 ng
 RT: 11.104 min Scan# 11
 Delta R.T. 0.000 min
 Lab File: BF140259.D
 Acq: 06 Nov 2024 17:30

Instrument :
 BNA_F
 ClientSampleId :
 SSTDCCC040EC

Tgt Ion:200 Resp: 243503

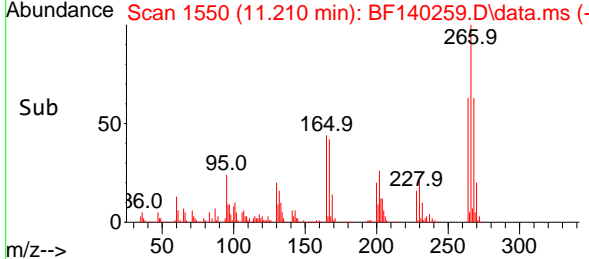
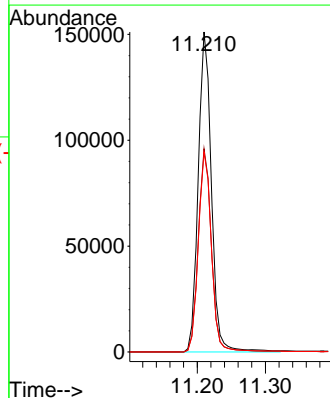
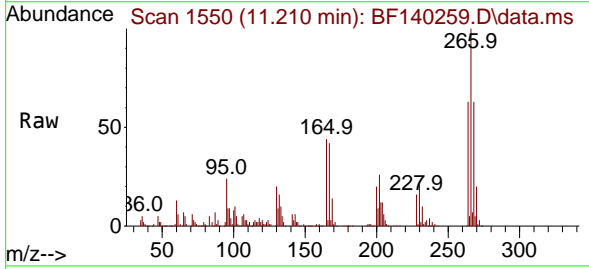
Ion	Ratio	Lower	Upper
200	100		
173	25.2	4.4	44.4
215	46.2	25.2	65.2

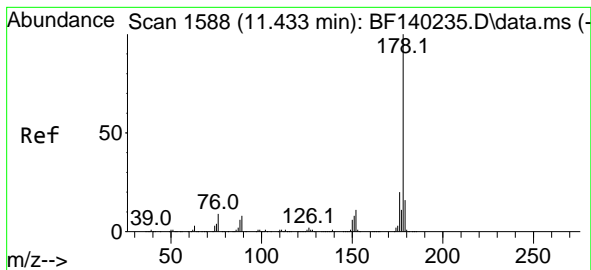


#70
 Pentachlorophenol
 Concen: 42.742 ng
 RT: 11.210 min Scan# 1550
 Delta R.T. 0.000 min
 Lab File: BF140259.D
 Acq: 06 Nov 2024 17:30

Tgt Ion:266 Resp: 203423

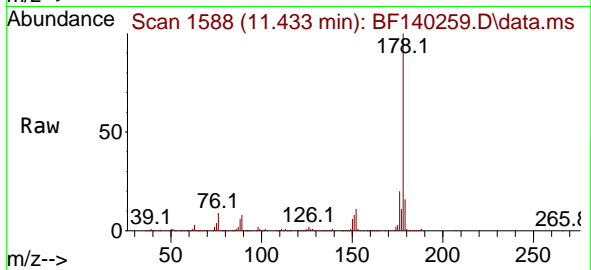
Ion	Ratio	Lower	Upper
266	100		
268	63.5	50.2	75.4
264	62.5	52.2	78.4



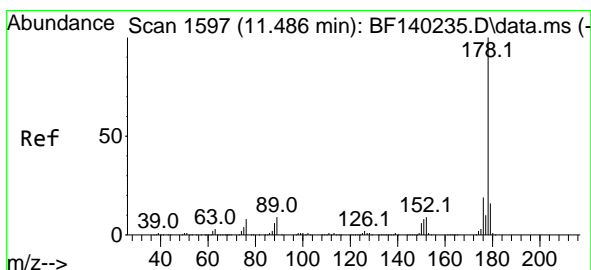
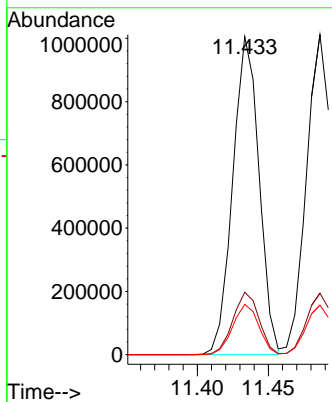
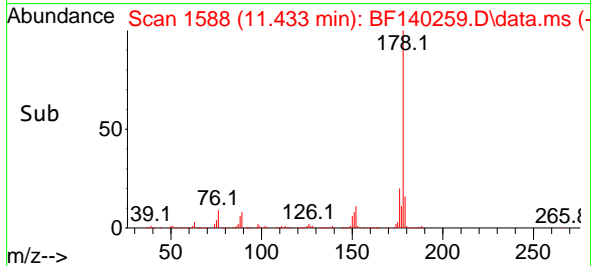


#71
 Phenanthrene
 Concen: 37.513 ng
 RT: 11.433 min Scan# 11
 Delta R.T. 0.000 min
 Lab File: BF140259.D
 Acq: 06 Nov 2024 17:30

Instrument :
 BNA_F
 ClientSampleId :
 SSTDCCC040EC

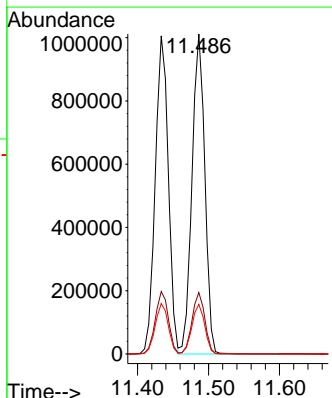
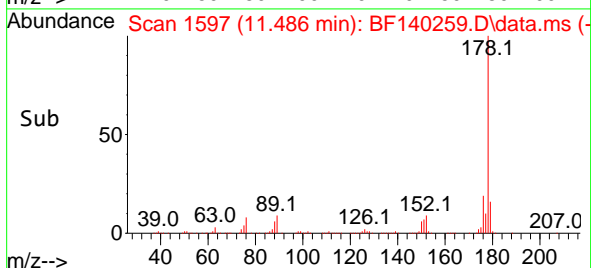
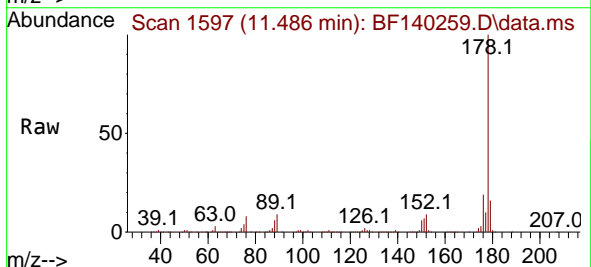


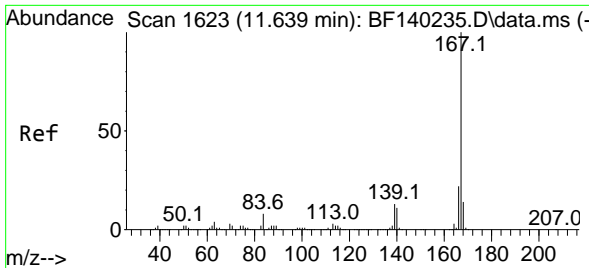
Tgt Ion:178 Resp: 1292740
 Ion Ratio Lower Upper
 178 100
 176 19.6 15.9 23.9
 179 15.8 12.6 18.8



#72
 Anthracene
 Concen: 37.663 ng
 RT: 11.486 min Scan# 1597
 Delta R.T. 0.000 min
 Lab File: BF140259.D
 Acq: 06 Nov 2024 17:30

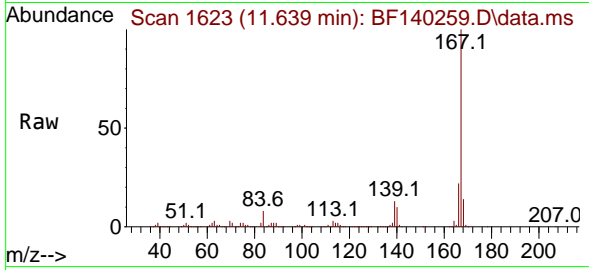
Tgt Ion:178 Resp: 1272696
 Ion Ratio Lower Upper
 178 100
 176 19.2 15.4 23.0
 179 15.5 12.7 19.1



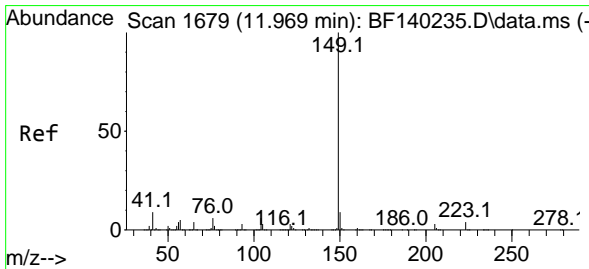
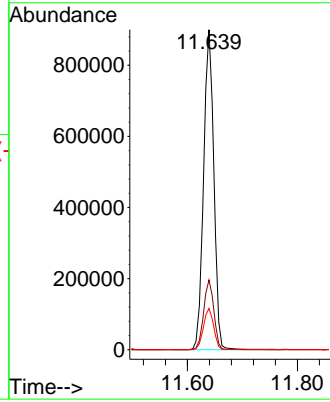
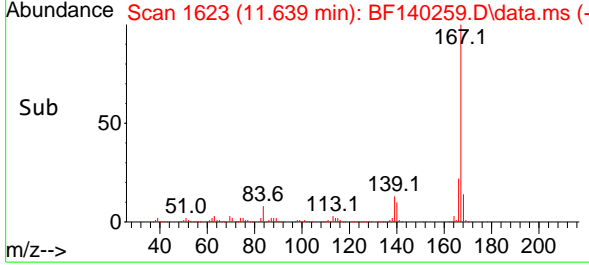


#73
 Carbazole
 Concen: 37.679 ng
 RT: 11.639 min Scan# 1623
 Delta R.T. 0.000 min
 Lab File: BF140259.D
 Acq: 06 Nov 2024 17:30

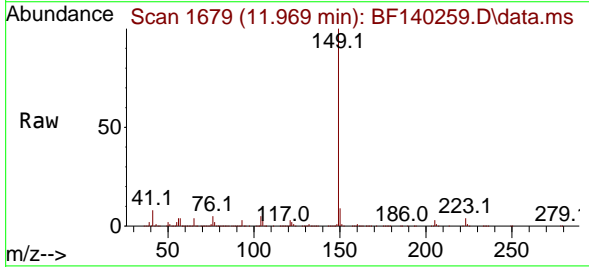
Instrument : BNA_F
 ClientSampleId : SSTDCCC040EC



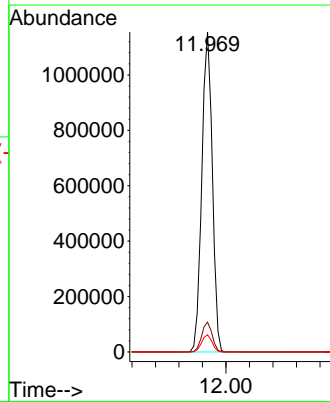
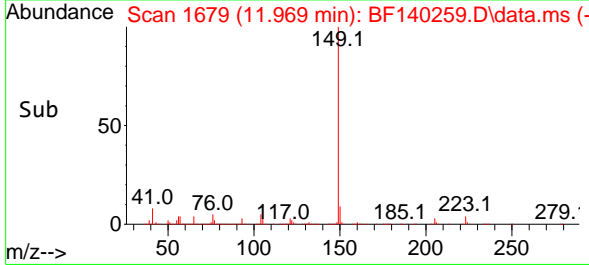
Tgt Ion:167 Resp: 1163385
 Ion Ratio Lower Upper
 167 100
 166 21.8 17.3 25.9
 139 12.9 10.7 16.1

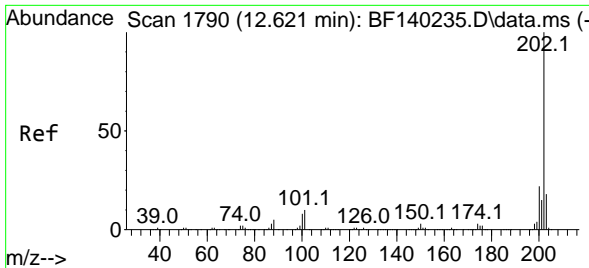


#74
 Di-n-butylphthalate
 Concen: 39.013 ng
 RT: 11.969 min Scan# 1679
 Delta R.T. 0.000 min
 Lab File: BF140259.D
 Acq: 06 Nov 2024 17:30



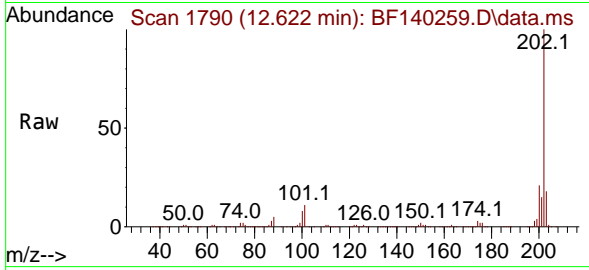
Tgt Ion:149 Resp: 1425869
 Ion Ratio Lower Upper
 149 100
 150 9.3 7.4 11.2
 104 5.3 4.5 6.7



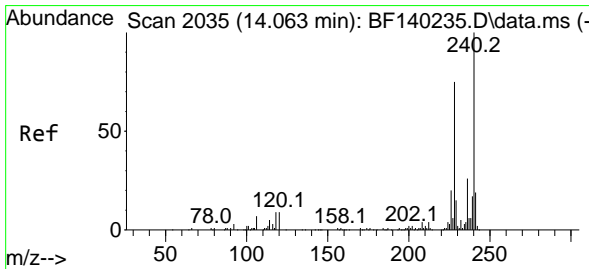
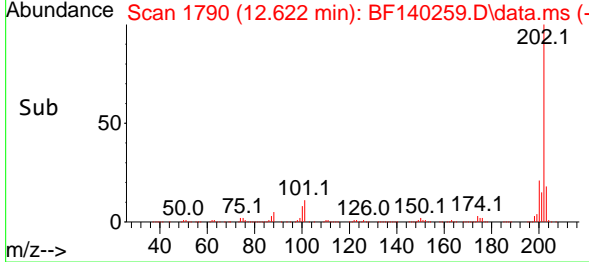
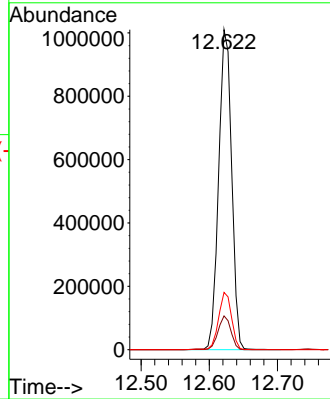


#75
 Fluoranthene
 Concen: 37.148 ng
 RT: 12.622 min Scan# 11
 Delta R.T. 0.000 min
 Lab File: BF140259.D
 Acq: 06 Nov 2024 17:30

Instrument :
 BNA_F
 ClientSampleId :
 SSTDCCC040EC

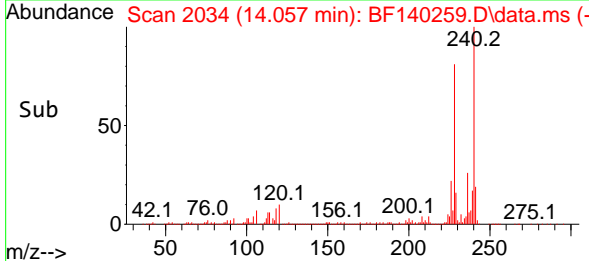
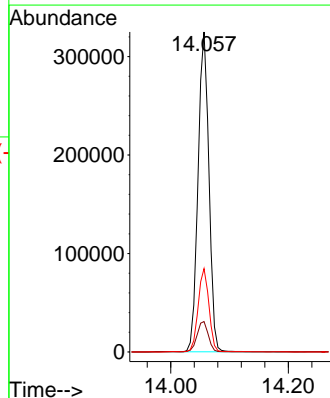
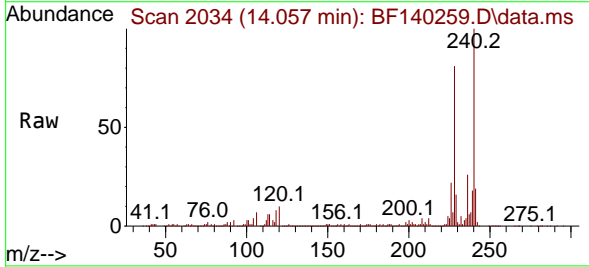


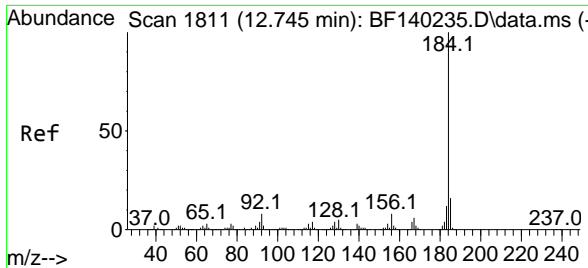
Tgt Ion: 202 Resp: 1338563
 Ion Ratio Lower Upper
 202 100
 101 10.6 0.0 30.4
 203 17.9 0.0 38.0



#76
 Chrysene-d12
 Concen: 20.000 ng
 RT: 14.057 min Scan# 2034
 Delta R.T. -0.006 min
 Lab File: BF140259.D
 Acq: 06 Nov 2024 17:30

Tgt Ion: 240 Resp: 416281
 Ion Ratio Lower Upper
 240 100
 120 9.5 7.5 11.3
 236 26.0 20.9 31.3



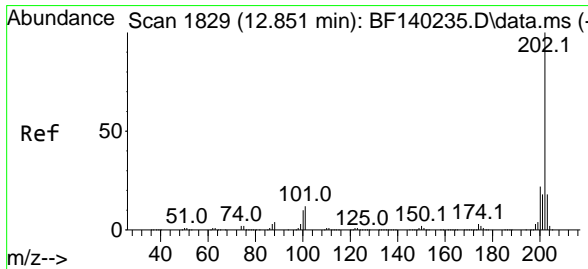
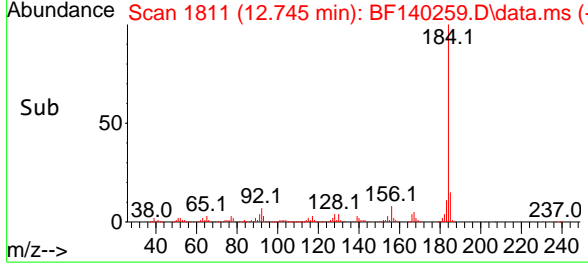
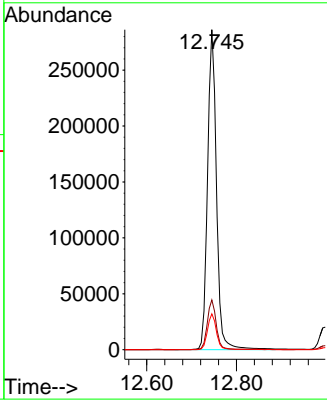
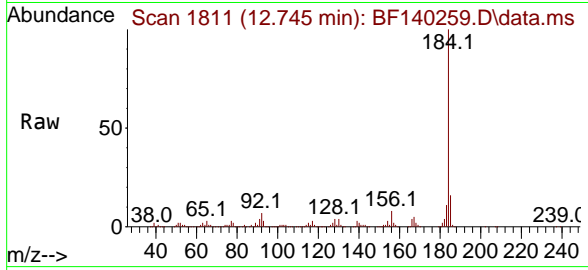


#77
Benzidine
Concen: 48.647 ng
RT: 12.745 min Scan# 1811
Delta R.T. 0.000 min
Lab File: BF140259.D
Acq: 06 Nov 2024 17:30

Instrument : BNA_F
ClientSampleId : SSTDCCC040EC

Tgt Ion:184 Resp: 395940

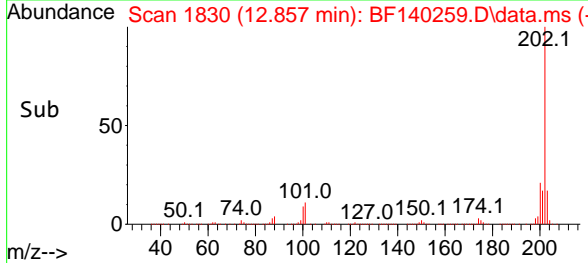
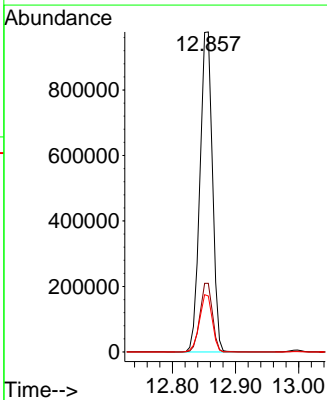
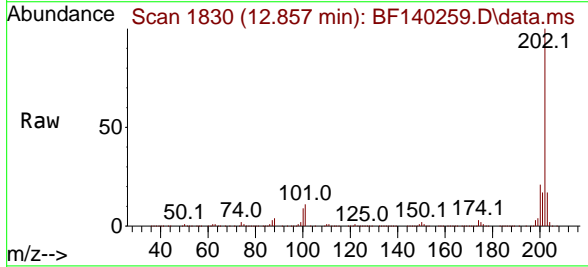
Ion	Ratio	Lower	Upper
184	100		
185	15.6	12.5	18.7
183	11.2	9.3	13.9

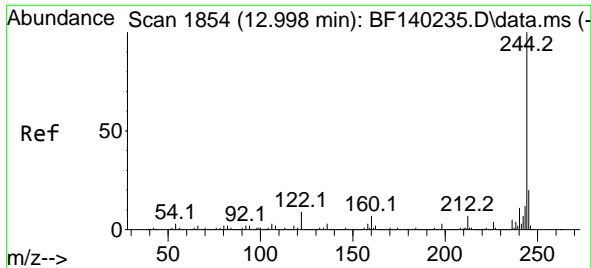


#78
Pyrene
Concen: 39.173 ng
RT: 12.857 min Scan# 1830
Delta R.T. 0.006 min
Lab File: BF140259.D
Acq: 06 Nov 2024 17:30

Tgt Ion:202 Resp: 1346427

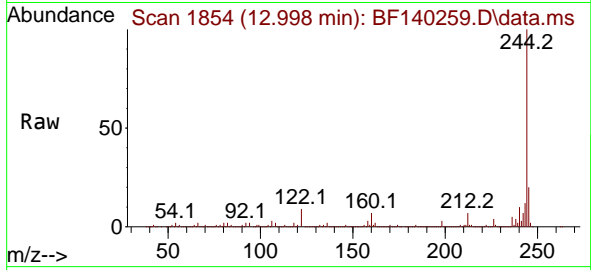
Ion	Ratio	Lower	Upper
202	100		
200	21.5	17.5	26.3
203	17.5	14.4	21.6





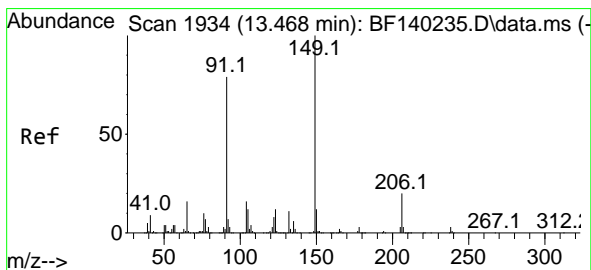
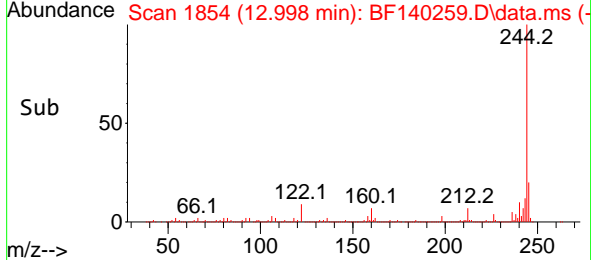
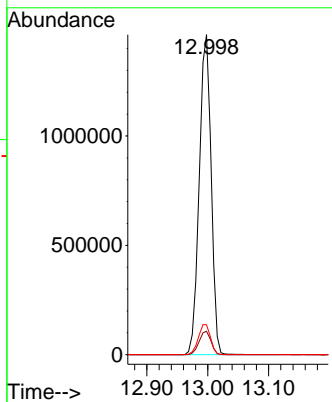
#79
 Terphenyl-d14
 Concen: 77.739 ng
 RT: 12.998 min Scan# 1854
 Delta R.T. 0.000 min
 Lab File: BF140259.D
 Acq: 06 Nov 2024 17:30

Instrument : BNA_F
 ClientSampleId : SSTDCCC040EC



Tgt Ion:244 Resp: 1975494

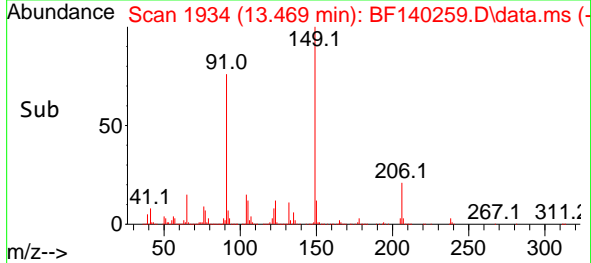
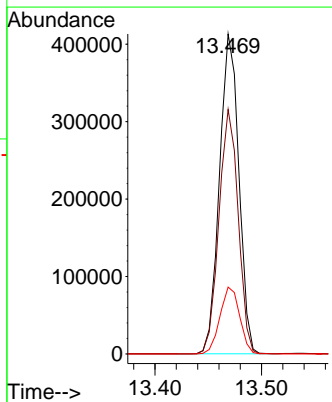
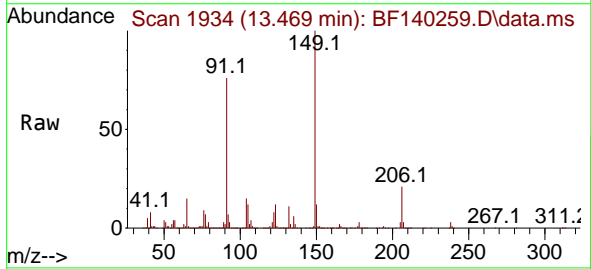
Ion	Ratio	Lower	Upper
244	100		
212	7.3	6.0	9.0
122	9.4	7.6	11.4

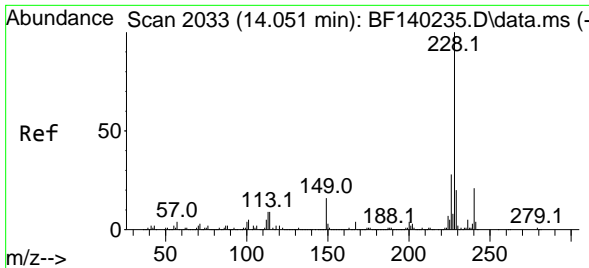


#80
 Butylbenzylphthalate
 Concen: 42.059 ng
 RT: 13.469 min Scan# 1934
 Delta R.T. 0.000 min
 Lab File: BF140259.D
 Acq: 06 Nov 2024 17:30

Tgt Ion:149 Resp: 520544

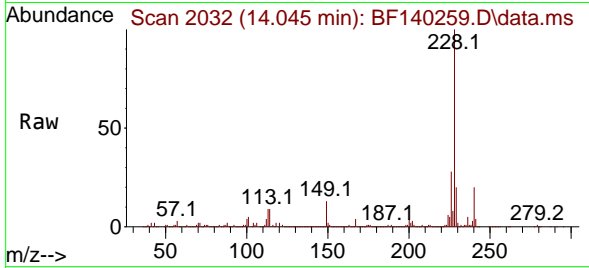
Ion	Ratio	Lower	Upper
149	100		
91	76.4	63.0	94.4
206	20.9	16.4	24.6



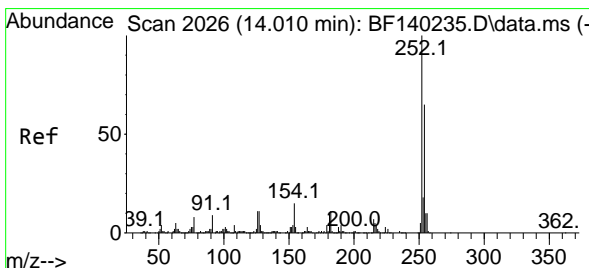
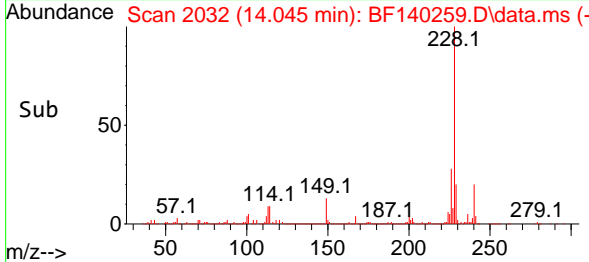
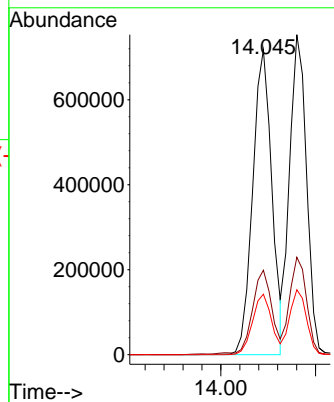


#81
 Benzo(a)anthracene
 Concen: 37.863 ng
 RT: 14.045 min Scan# 2032
 Delta R.T. -0.006 min
 Lab File: BF140259.D
 Acq: 06 Nov 2024 17:30

Instrument : BNA_F
 ClientSampleId : SSTDCCC040EC

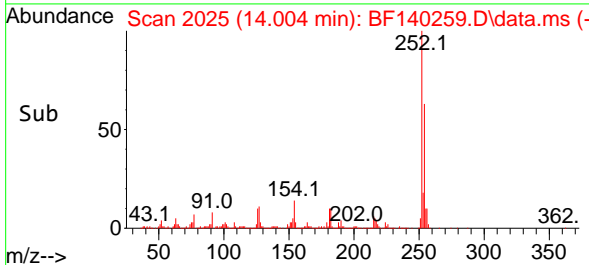
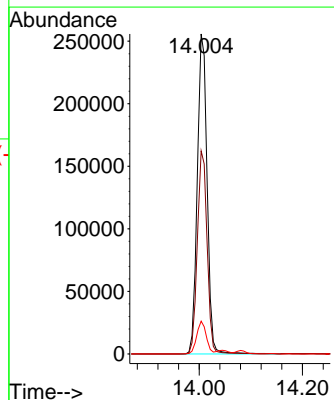
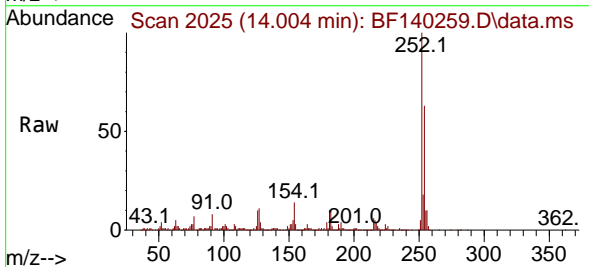


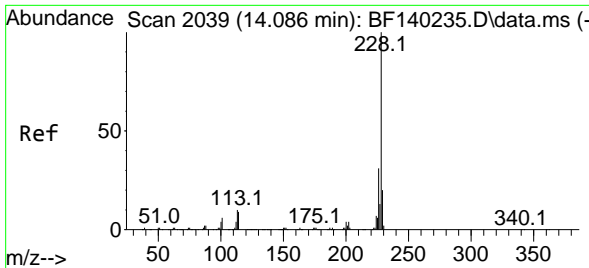
Tgt Ion:228 Resp: 1011504
 Ion Ratio Lower Upper
 228 100
 226 27.7 22.3 33.5
 229 19.8 16.1 24.1



#82
 3,3'-Dichlorobenzidine
 Concen: 40.109 ng
 RT: 14.004 min Scan# 2025
 Delta R.T. -0.006 min
 Lab File: BF140259.D
 Acq: 06 Nov 2024 17:30

Tgt Ion:252 Resp: 336495
 Ion Ratio Lower Upper
 252 100
 254 63.5 51.8 77.8
 126 10.3 8.6 12.8

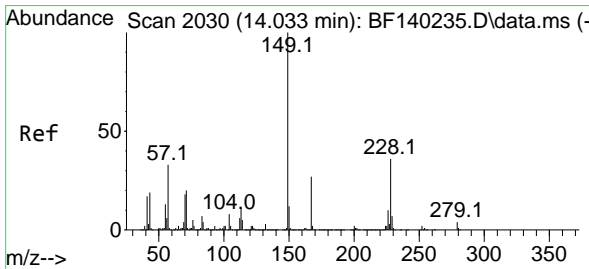
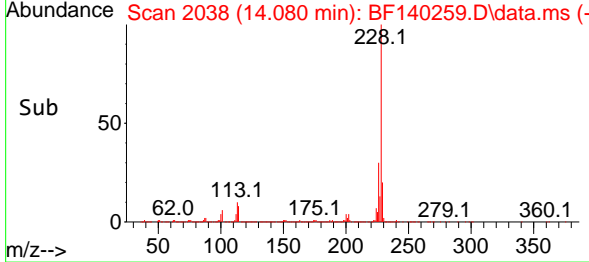
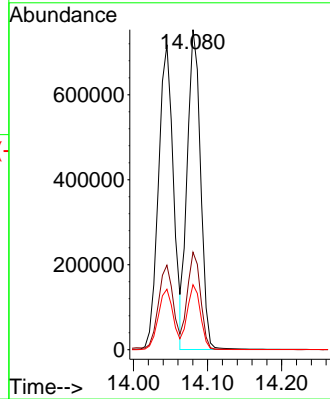
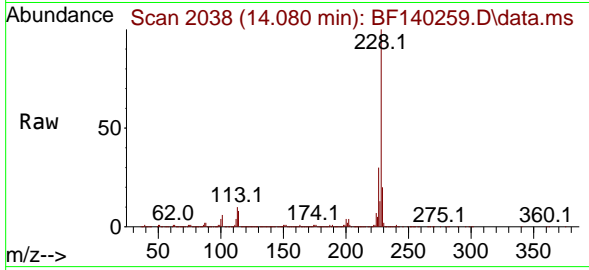




#83
 Chrysene
 Concen: 37.513 ng
 RT: 14.080 min Scan# 2029
 Delta R.T. -0.006 min
 Lab File: BF140259.D
 Acq: 06 Nov 2024 17:30

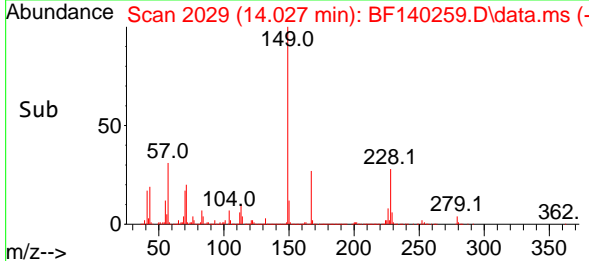
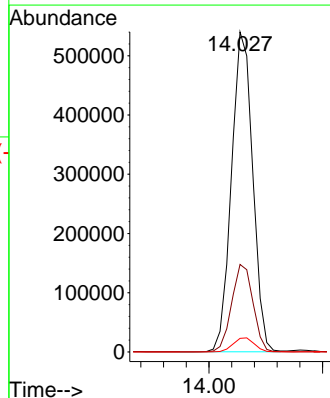
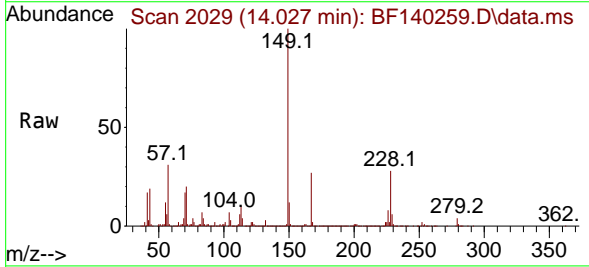
Instrument : BNA_F
 ClientSampleId : SSTDCCC040EC

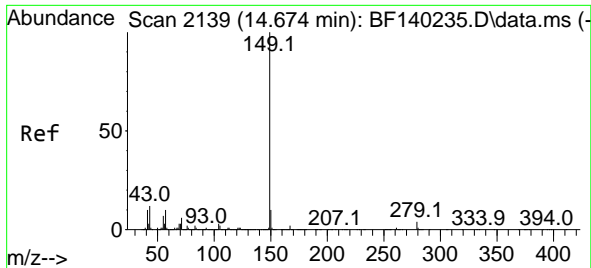
Tgt Ion	Resp	Lower	Upper
228	100		
226	30.4	24.6	36.8
229	20.3	16.1	24.1



#84
 Bis(2-ethylhexyl)phthalate
 Concen: 40.256 ng
 RT: 14.027 min Scan# 2029
 Delta R.T. -0.006 min
 Lab File: BF140259.D
 Acq: 06 Nov 2024 17:30

Tgt Ion	Resp	Lower	Upper
149	100		
167	27.4	21.8	32.8
279	4.3	3.2	4.8



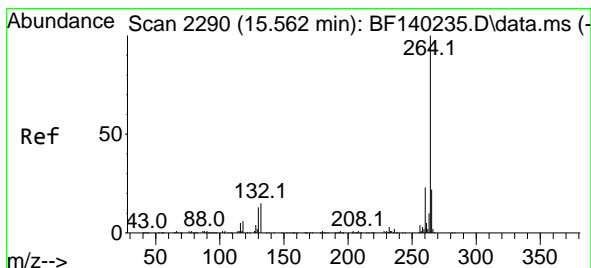
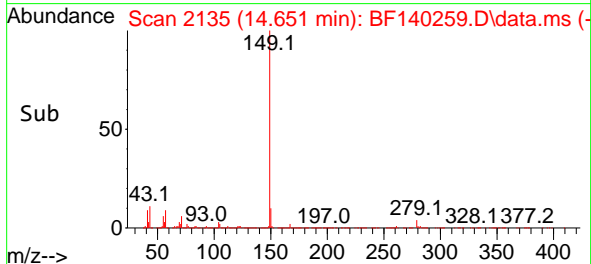
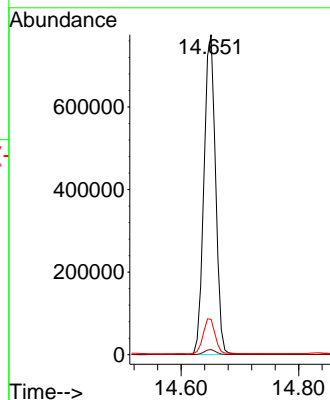
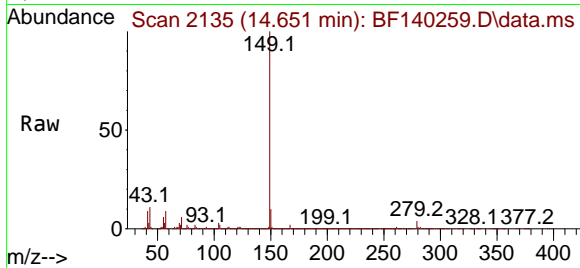


#85
 Di-n-octyl phthalate
 Concen: 40.477 ng
 RT: 14.651 min Scan# 2135
 Delta R.T. -0.023 min
 Lab File: BF140259.D
 Acq: 06 Nov 2024 17:30

Instrument : BNA_F
 ClientSampleId : SSTDCCC040EC

Tgt Ion:149 Resp: 1056814

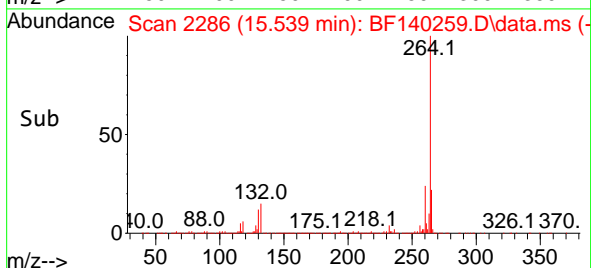
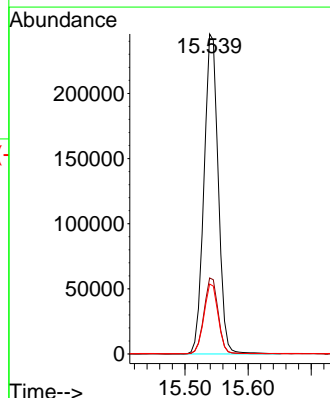
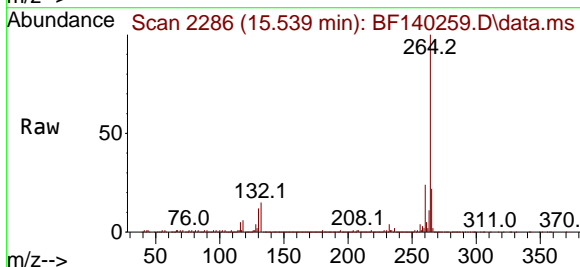
Ion	Ratio	Lower	Upper
149	100		
167	1.6	1.3	1.9
43	11.2	9.7	14.5

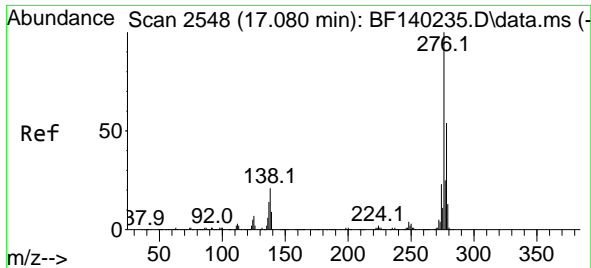


#86
 Perylene-d12
 Concen: 20.000 ng
 RT: 15.539 min Scan# 2286
 Delta R.T. -0.023 min
 Lab File: BF140259.D
 Acq: 06 Nov 2024 17:30

Tgt Ion:264 Resp: 384228

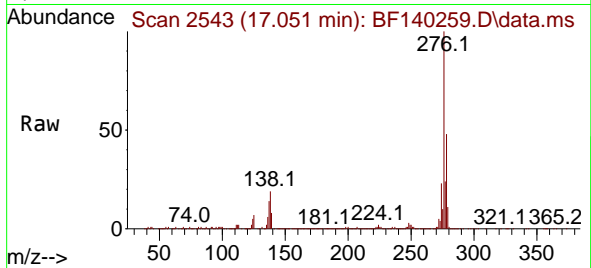
Ion	Ratio	Lower	Upper
264	100		
260	23.8	18.8	28.2
265	21.8	17.3	25.9



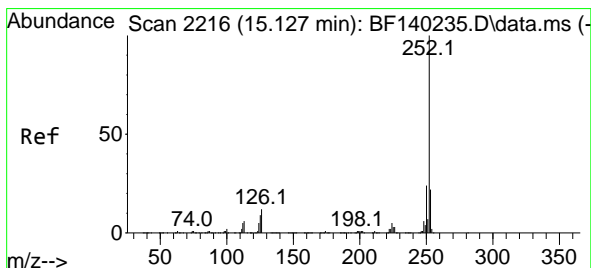
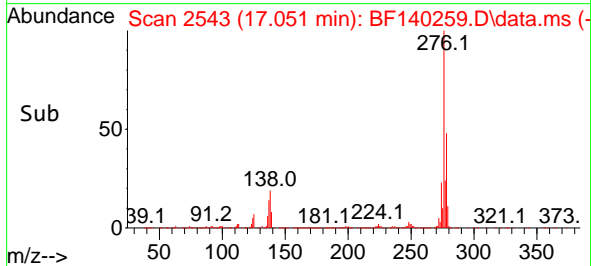
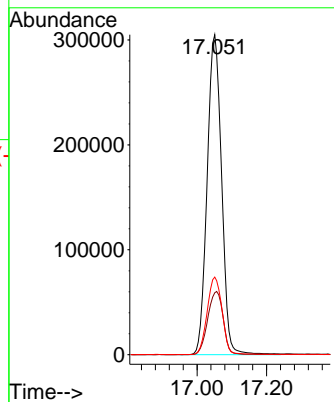


#87
 Indeno(1,2,3-cd)pyrene
 Concen: 38.992 ng
 RT: 17.051 min Scan# 21
 Delta R.T. -0.029 min
 Lab File: BF140259.D
 Acq: 06 Nov 2024 17:30

Instrument :
 BNA_F
 ClientSampleId :
 SSTDCCC040EC

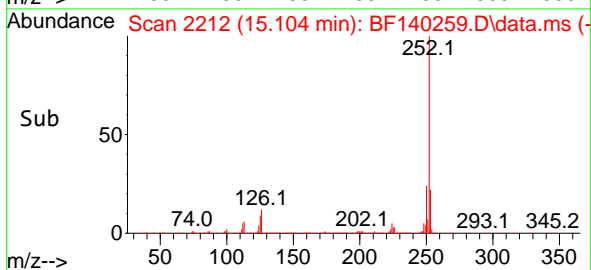
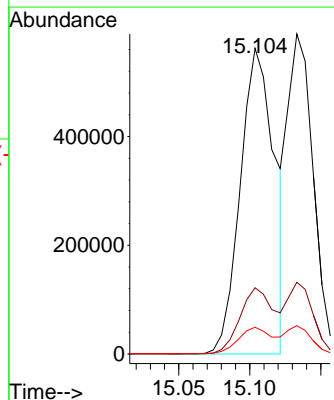
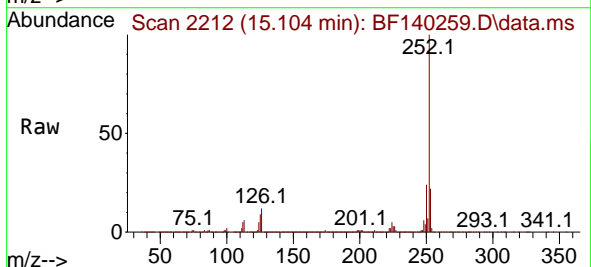


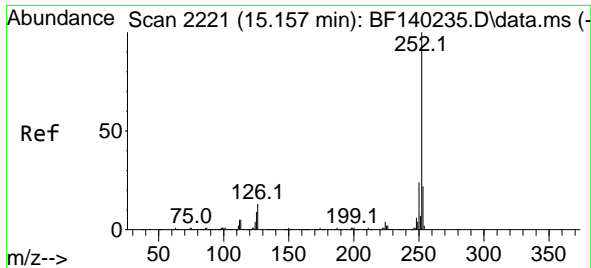
Tgt Ion:276 Resp: 879419
 Ion Ratio Lower Upper
 276 100
 138 21.1 17.6 26.4
 277 24.9 20.2 30.2



#88
 Benzo(b)fluoranthene
 Concen: 40.599 ng
 RT: 15.104 min Scan# 2212
 Delta R.T. -0.023 min
 Lab File: BF140259.D
 Acq: 06 Nov 2024 17:30

Tgt Ion:252 Resp: 943558
 Ion Ratio Lower Upper
 252 100
 253 21.7 17.9 26.9
 125 8.8 7.0 10.6

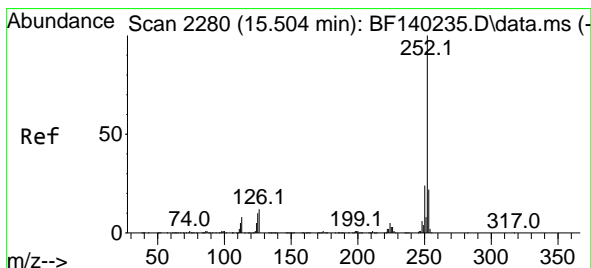
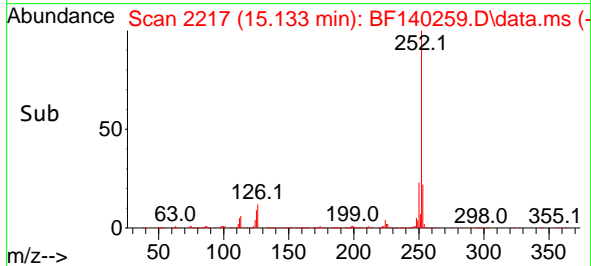
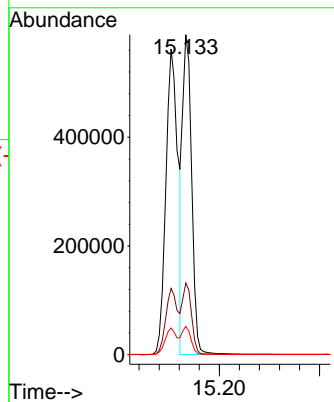
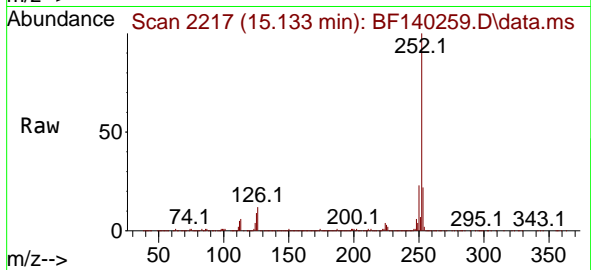




#89
 Benzo(k)fluoranthene
 Concen: 35.012 ng
 RT: 15.133 min Scan# 21
 Delta R.T. -0.023 min
 Lab File: BF140259.D
 Acq: 06 Nov 2024 17:30

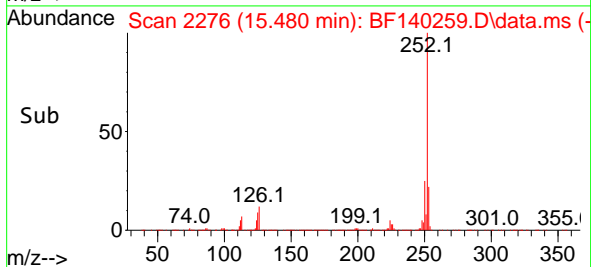
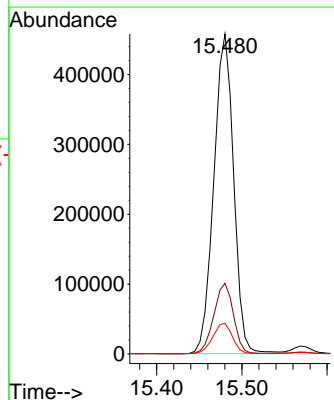
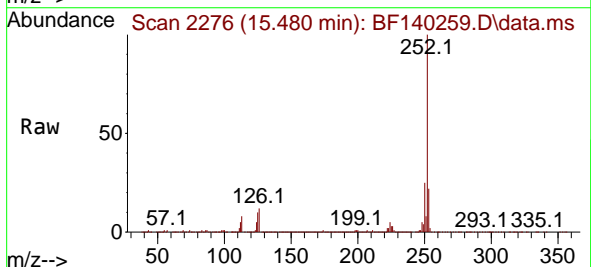
Instrument :
 BNA_F
 ClientSampleId :
 SSTDCCC040EC

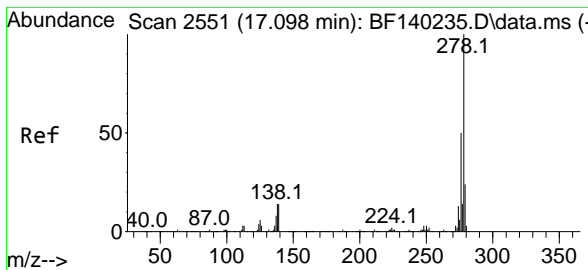
Tgt Ion:252 Resp: 746670
 Ion Ratio Lower Upper
 252 100
 253 22.4 17.8 26.8
 125 8.9 7.2 10.8



#90
 Benzo(a)pyrene
 Concen: 38.626 ng
 RT: 15.480 min Scan# 2276
 Delta R.T. -0.023 min
 Lab File: BF140259.D
 Acq: 06 Nov 2024 17:30

Tgt Ion:252 Resp: 740158
 Ion Ratio Lower Upper
 252 100
 253 22.1 17.4 26.0
 125 9.5 7.6 11.4

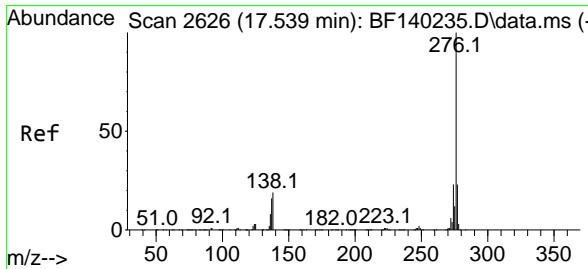
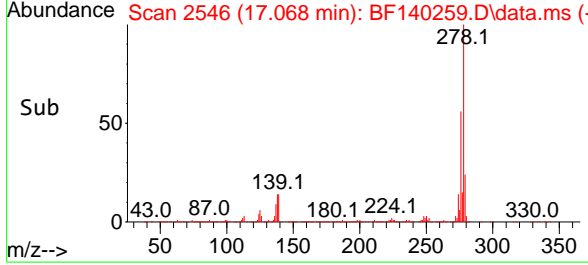
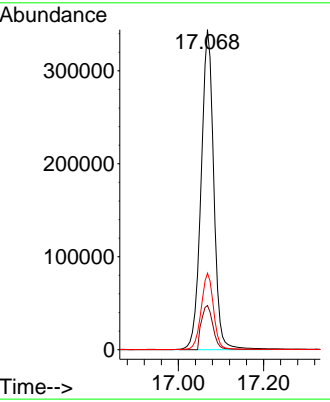
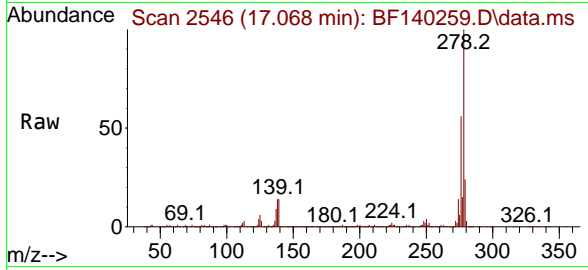




#91
 Dibenzo(a,h)anthracene
 Concen: 38.311 ng
 RT: 17.068 min Scan# 21
 Delta R.T. -0.029 min
 Lab File: BF140259.D
 Acq: 06 Nov 2024 17:30

Instrument : BNA_F
 ClientSampleId : SSTDCCC040EC

Tgt Ion	Resp	Lower	Upper
278	100		
139	13.8	11.1	16.7
279	23.9	19.1	28.7



#92
 Benzo(g,h,i)perylene
 Concen: 38.818 ng
 RT: 17.509 min Scan# 2621
 Delta R.T. -0.029 min
 Lab File: BF140259.D
 Acq: 06 Nov 2024 17:30

Tgt Ion	Resp	Lower	Upper
276	100		
277	23.1	18.8	28.2
138	18.3	15.3	22.9

