

Data Path : Z:\svoasrv\HPCHEM1\BNA_F\Data\BF110824\
 Data File : BF140306.D
 Acq On : 08 Nov 2024 18:29
 Operator : RC/JU
 Sample : P4756-01
 Misc :
 ALS Vial : 22 Sample Multiplier: 1

Instrument :
 BNA_F
 ClientSampleId :
 BP-B4

Quant Time: Nov 08 21:47:50 2024
 Quant Method : Z:\svoasrv\HPCHEM1\BNA_F\Methods\8270-BF110524.M
 Quant Title : ASP BNA STANDARDS FOR 5 POINT CALIBRATION
 QLast Update : Tue Nov 05 16:47:56 2024
 Response via : Initial Calibration

Compound	R.T.	QIon	Response	Conc	Units	Dev(Min)

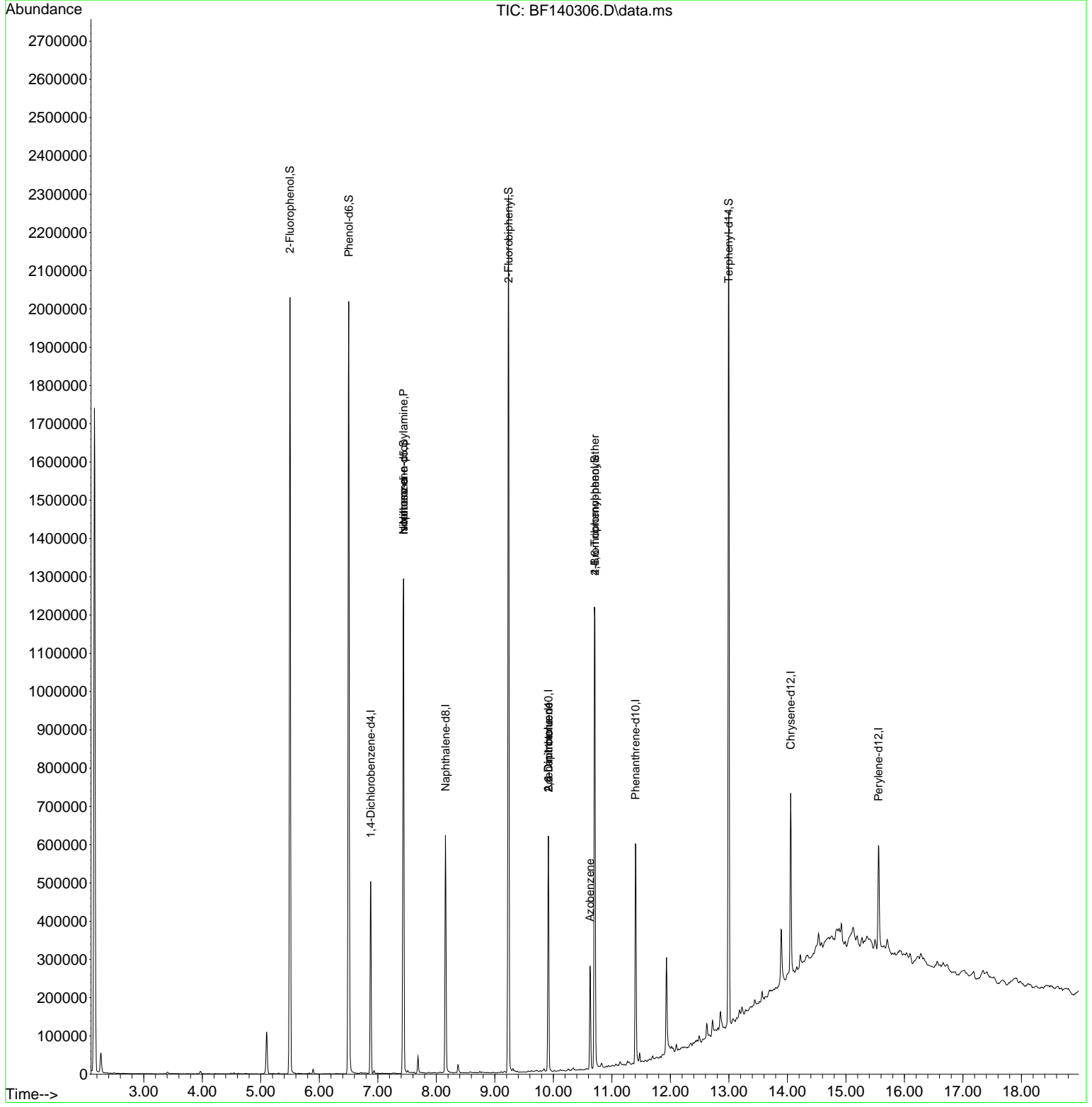
Internal Standards						
1) 1,4-Dichlorobenzene-d4	6.881	152	106091	20.000	ng	0.00
21) Naphthalene-d8	8.157	136	372688	20.000	ng	0.00
39) Acenaphthene-d10	9.916	164	187605	20.000	ng	0.00
64) Phenanthrene-d10	11.404	188	321471	20.000	ng	0.00
76) Chrysene-d12	14.057	240	223641	20.000	ng	0.00
86) Perylene-d12	15.556	264	176151	20.000	ng	0.00
System Monitoring Compounds						
5) 2-Fluorophenol	5.498	112	733969	114.651	ng	0.00
7) Phenol-d6	6.504	99	947273	115.040	ng	0.00
23) Nitrobenzene-d5	7.439	82	578218	77.137	ng	0.00
42) 2,4,6-Tribromophenol	10.710	330	218158	117.645	ng	0.00
45) 2-Fluorobiphenyl	9.233	172	1010899	86.043	ng	0.00
79) Terphenyl-d14	12.998	244	1070534	78.415	ng	0.00
Target Compounds						
19) n-Nitroso-di-n-propyla...	7.439	70	80256	15.278	ng	# 74
25) Isophorone	7.439	82	572110	44.325	ng	# 67
51) 2,6-Dinitrotoluene	9.916	165	24265	8.935	ng	# 22
57) 2,4-Dinitrotoluene	9.916	165	24265	6.885	ng	# 19
63) Azobenzene	10.627	77	68372	5.745	ng	# 1
67) 4-Bromophenyl-phenylether	10.710	248	14121	4.079	ng	# 1

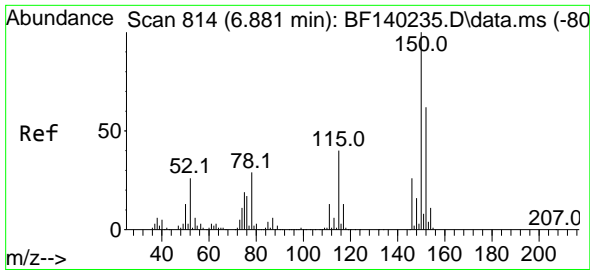
(#) = qualifier out of range (m) = manual integration (+) = signals summed

Data Path : Z:\svoasrv\HPCHEM1\BNA_F\Data\BF110824\
 Data File : BF140306.D
 Acq On : 08 Nov 2024 18:29
 Operator : RC/JU
 Sample : P4756-01
 Misc :
 ALS Vial : 22 Sample Multiplier: 1

Instrument :
 BNA_F
 ClientSampleId :
 BP-B4

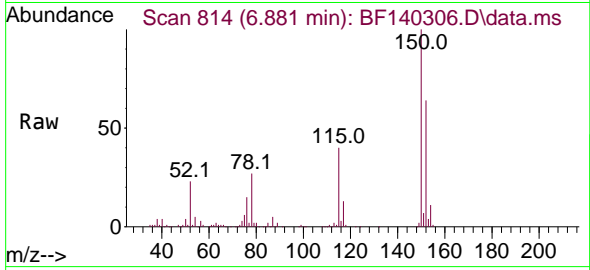
Quant Time: Nov 08 21:47:50 2024
 Quant Method : Z:\svoasrv\HPCHEM1\BNA_F\Methods\8270-BF110524.M
 Quant Title : ASP BNA STANDARDS FOR 5 POINT CALIBRATION
 QLast Update : Tue Nov 05 16:47:56 2024
 Response via : Initial Calibration



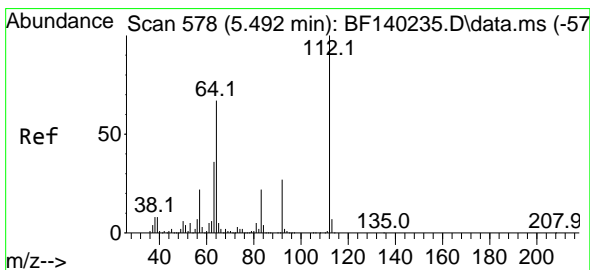
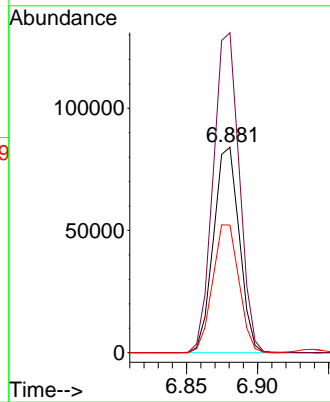
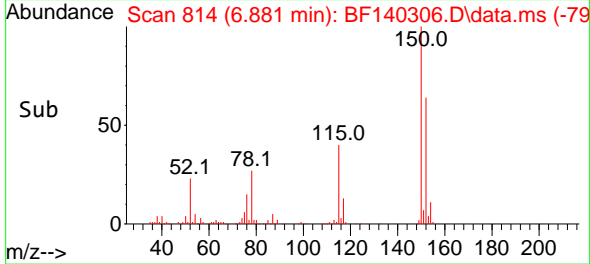


#1
 1,4-Dichlorobenzene-d4
 Concen: 20.000 ng
 RT: 6.881 min Scan# 814
 Delta R.T. -0.000 min
 Lab File: BF140306.D
 Acq: 08 Nov 2024 18:29

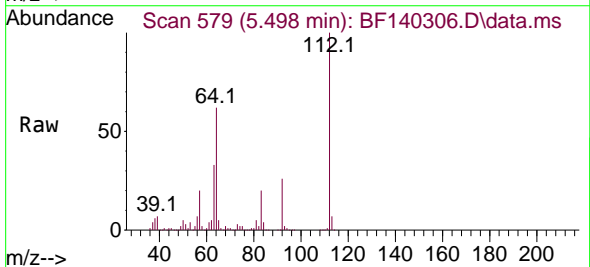
Instrument :
 BNA_F
 ClientSampleId :
 BP-B4



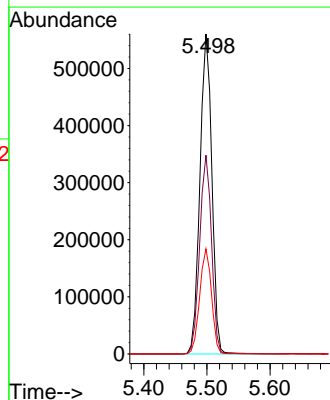
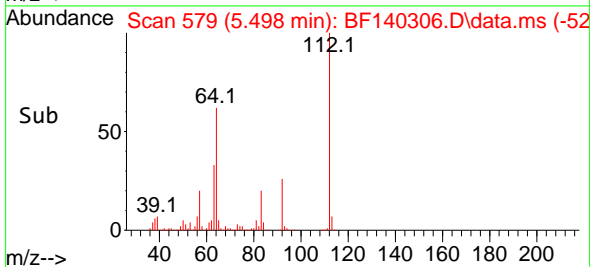
Tgt Ion:152 Resp: 106091
 Ion Ratio Lower Upper
 152 100
 150 155.8 129.4 194.2
 115 62.1 51.5 77.3

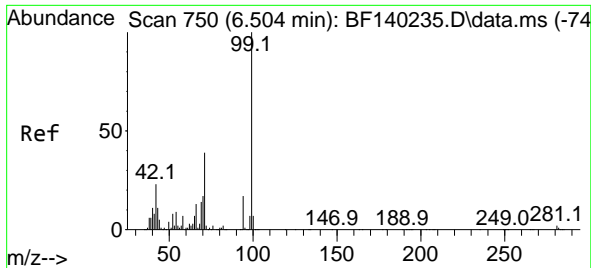


#5
 2-Fluorophenol
 Concen: 114.651 ng
 RT: 5.498 min Scan# 579
 Delta R.T. 0.006 min
 Lab File: BF140306.D
 Acq: 08 Nov 2024 18:29



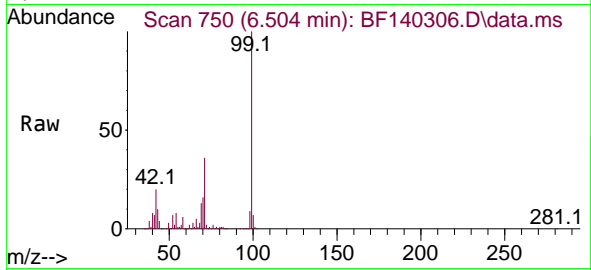
Tgt Ion:112 Resp: 733969
 Ion Ratio Lower Upper
 112 100
 64 62.1 53.4 80.2
 63 32.8 28.9 43.3



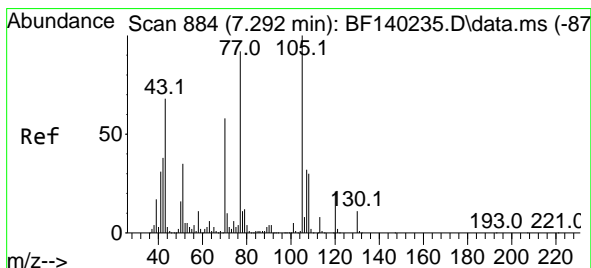
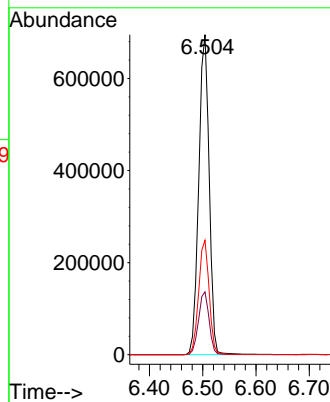
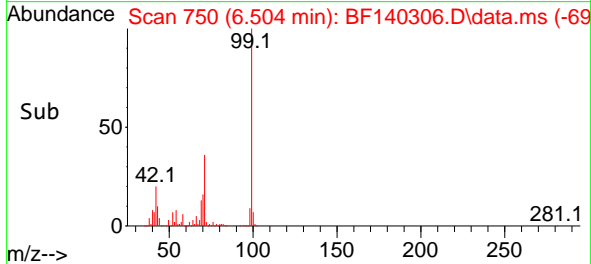


#7
 Phenol-d6
 Concen: 115.040 ng
 RT: 6.504 min Scan# 71
 Delta R.T. -0.000 min
 Lab File: BF140306.D
 Acq: 08 Nov 2024 18:29

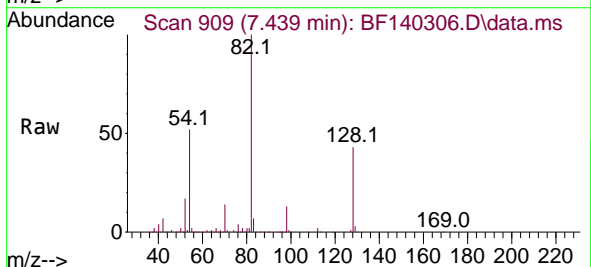
Instrument :
 BNA_F
 ClientSampleId :
 BP-B4



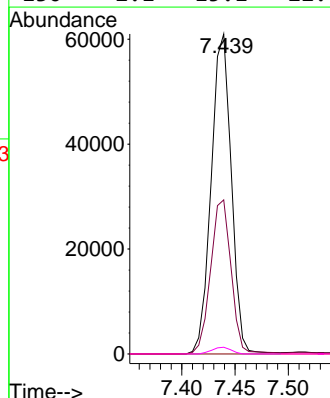
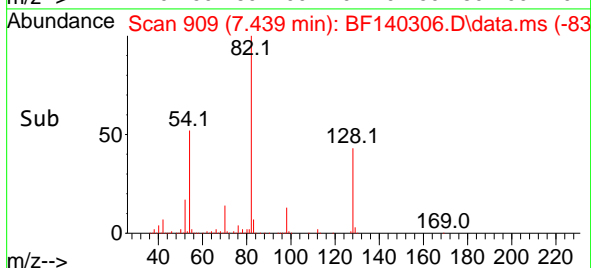
Tgt Ion: 99 Resp: 947273
 Ion Ratio Lower Upper
 99 100
 42 19.6 18.2 27.2
 71 35.8 30.9 46.3

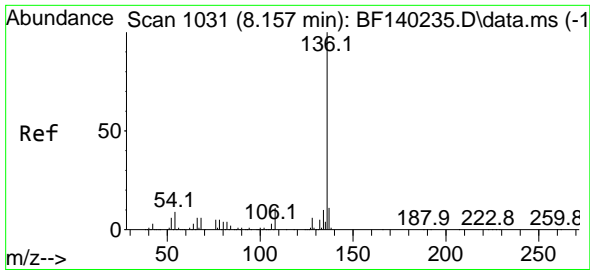


#19
 n-Nitroso-di-n-propylamine
 Concen: 15.278 ng
 RT: 7.439 min Scan# 909
 Delta R.T. 0.147 min
 Lab File: BF140306.D
 Acq: 08 Nov 2024 18:29



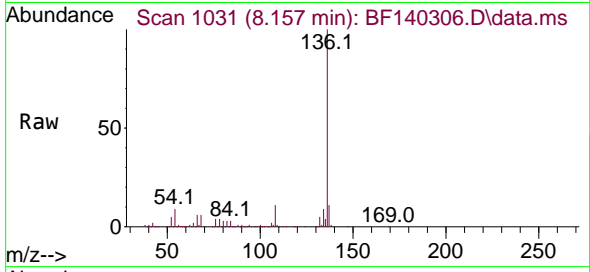
Tgt Ion: 70 Resp: 80256
 Ion Ratio Lower Upper
 70 100
 42 48.2 52.8 79.2#
 101 0.0 7.4 11.2#
 130 2.1 15.1 22.7#





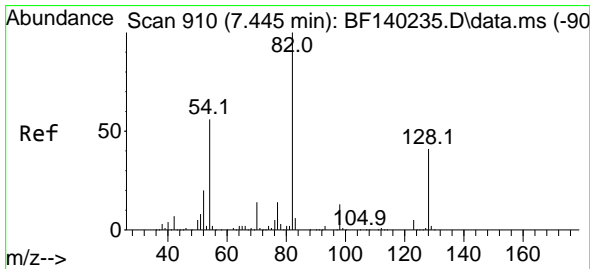
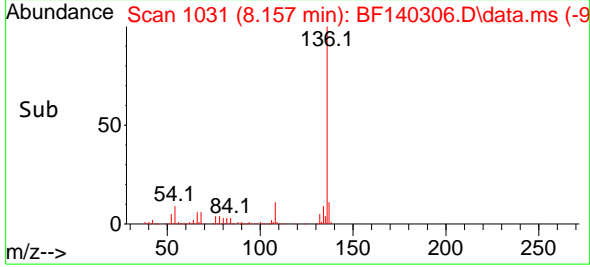
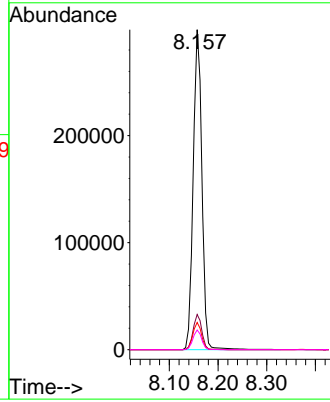
#21
 Naphthalene-d8
 Concen: 20.000 ng
 RT: 8.157 min Scan# 1031
 Delta R.T. -0.000 min
 Lab File: BF140306.D
 Acq: 08 Nov 2024 18:29

Instrument :
 BNA_F
 ClientSampleId :
 BP-B4



Tgt Ion: 136 Resp: 372688

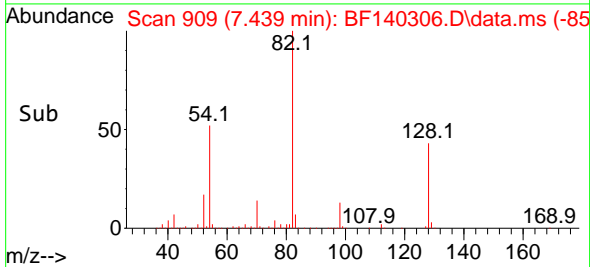
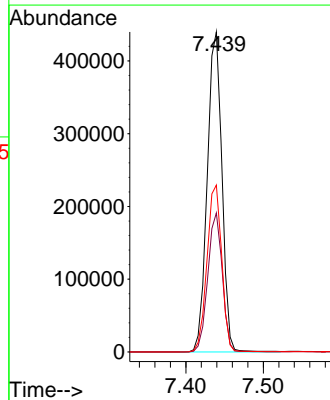
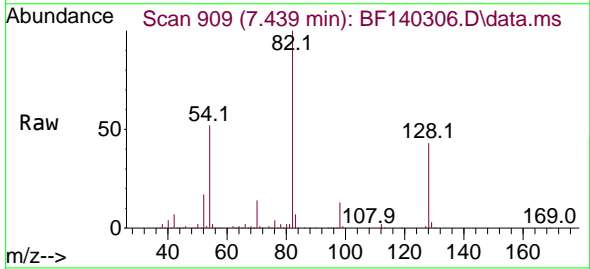
Ion	Ratio	Lower	Upper
136	100		
137	11.0	9.0	13.6
54	8.5	7.7	11.5
68	6.1	5.2	7.8

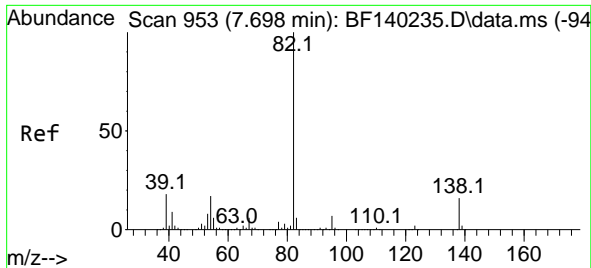


#23
 Nitrobenzene-d5
 Concen: 77.137 ng
 RT: 7.439 min Scan# 909
 Delta R.T. -0.006 min
 Lab File: BF140306.D
 Acq: 08 Nov 2024 18:29

Tgt Ion: 82 Resp: 578218

Ion	Ratio	Lower	Upper
82	100		
128	43.5	32.8	49.2
54	52.2	44.3	66.5



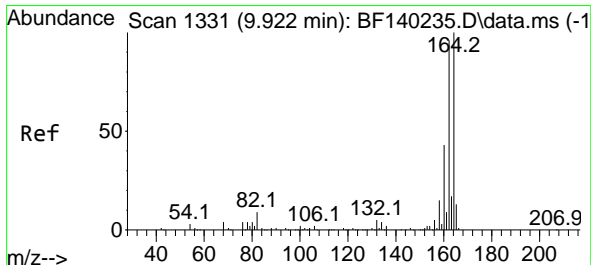
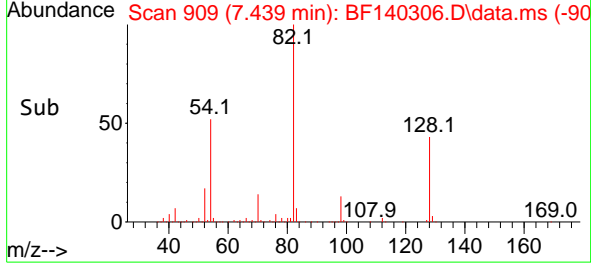
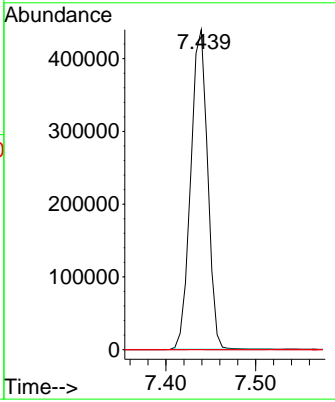
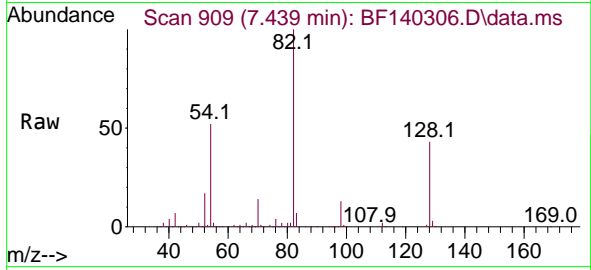


#25
 Isophorone
 Concen: 44.325 ng
 RT: 7.439 min Scan# 90
 Delta R.T. -0.259 min
 Lab File: BF140306.D
 Acq: 08 Nov 2024 18:29

Instrument : BNA_F
 Client SampleId : BP-B4

Tgt Ion: 82 Resp: 572110

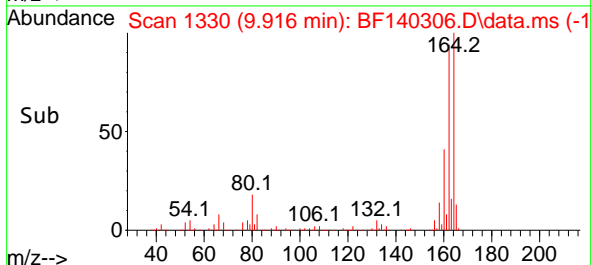
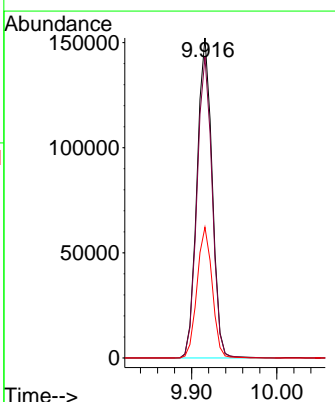
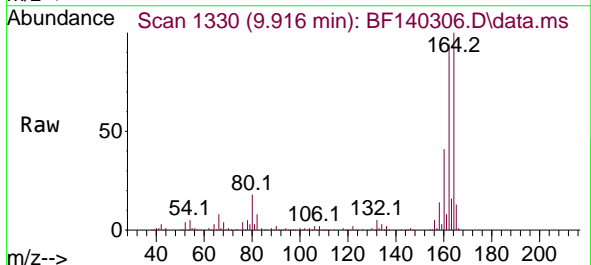
Ion	Ratio	Lower	Upper
82	100		
95	0.0	6.0	9.0#
138	0.0	12.9	19.3#

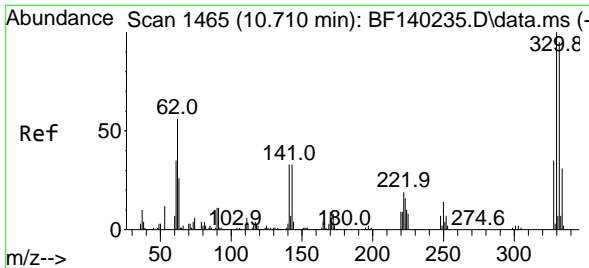


#39
 Acenaphthene-d10
 Concen: 20.000 ng
 RT: 9.916 min Scan# 1330
 Delta R.T. -0.006 min
 Lab File: BF140306.D
 Acq: 08 Nov 2024 18:29

Tgt Ion: 164 Resp: 187605

Ion	Ratio	Lower	Upper
164	100		
162	94.1	77.0	115.4
160	40.8	34.1	51.1



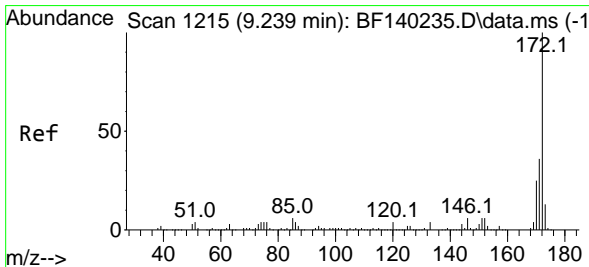
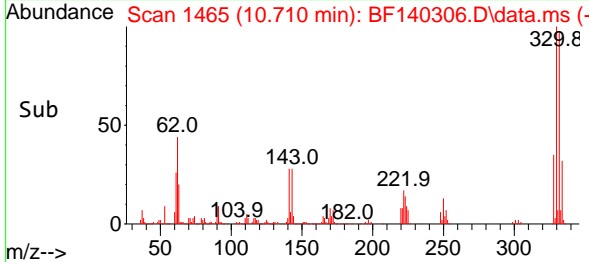
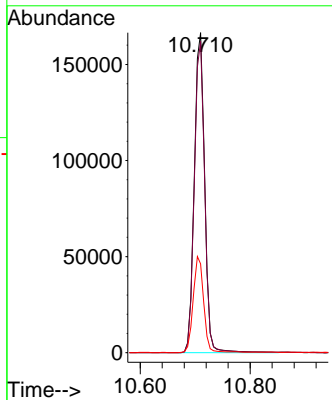
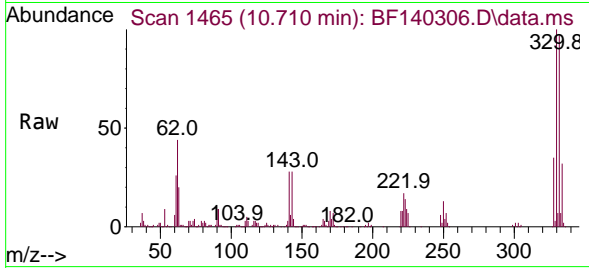


#42
 2,4,6-Tribromophenol
 Concen: 117.645 ng
 RT: 10.710 min Scan# 1465
 Delta R.T. -0.000 min
 Lab File: BF140306.D
 Acq: 08 Nov 2024 18:29

Instrument : BNA_F
 ClientSampleId : BP-B4

Tgt Ion: 330 Resp: 218158

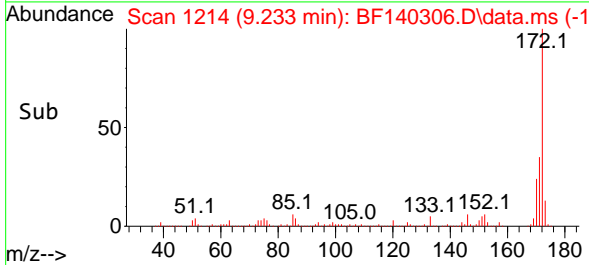
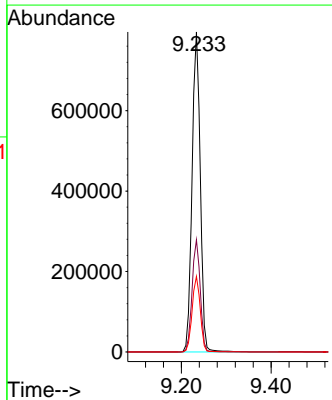
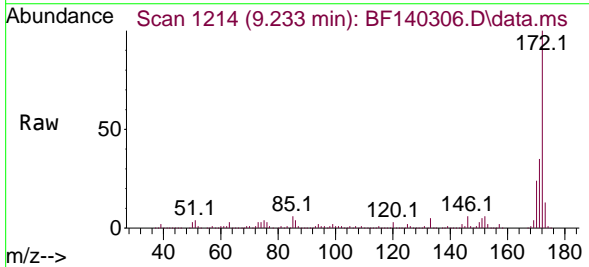
Ion	Ratio	Lower	Upper
330	100		
332	97.0	76.4	114.6
141	30.2	27.0	40.4

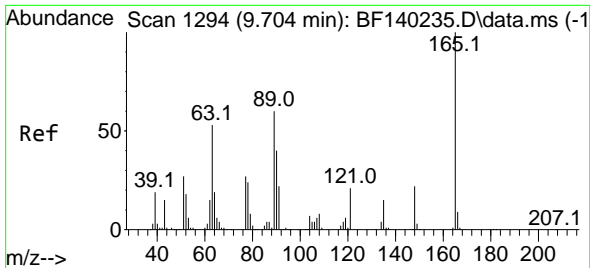


#45
 2-Fluorobiphenyl
 Concen: 86.043 ng
 RT: 9.233 min Scan# 1214
 Delta R.T. -0.006 min
 Lab File: BF140306.D
 Acq: 08 Nov 2024 18:29

Tgt Ion: 172 Resp: 1010899

Ion	Ratio	Lower	Upper
172	100		
171	35.1	28.8	43.2
170	23.6	19.6	29.4

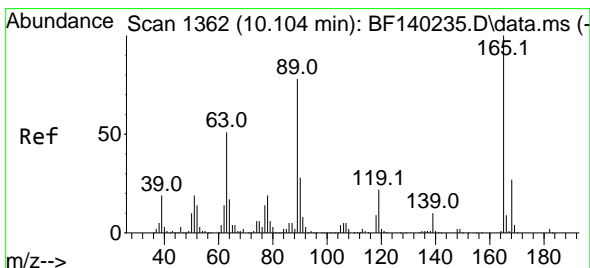
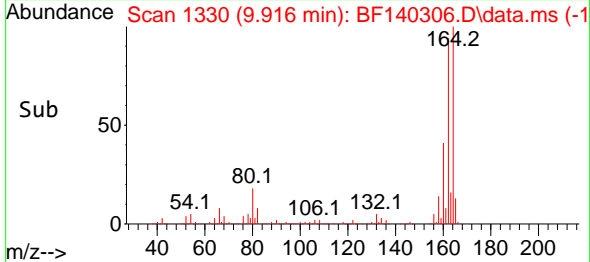
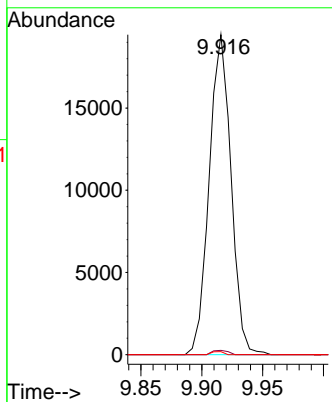
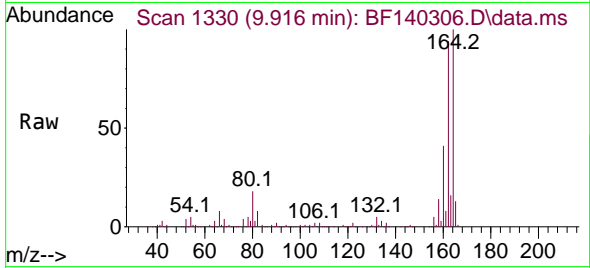




#51
 2,6-Dinitrotoluene
 Concen: 8.935 ng
 RT: 9.916 min Scan# 11
 Delta R.T. 0.212 min
 Lab File: BF140306.D
 Acq: 08 Nov 2024 18:29

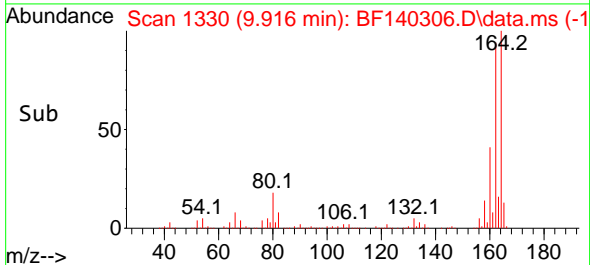
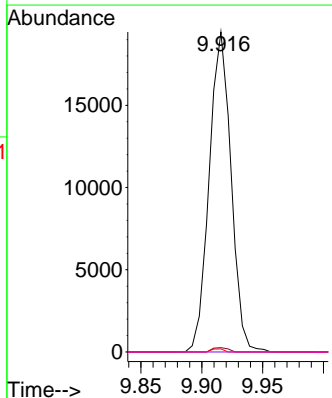
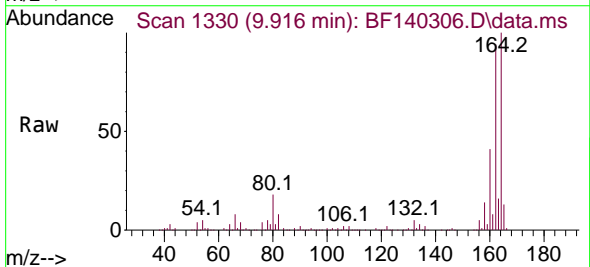
Instrument :
 BNA_F
 ClientSampleId :
 BP-B4

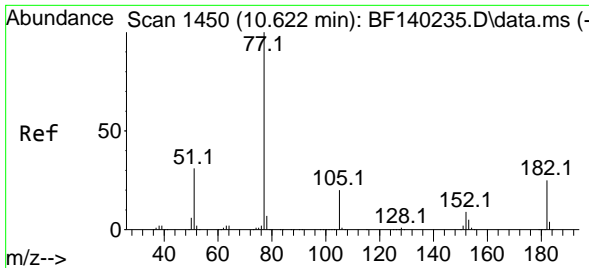
Tgt Ion	Resp	Lower	Upper
165	100		
63	1.3	48.8	73.2#
89	1.0	48.1	72.1#



#57
 2,4-Dinitrotoluene
 Concen: 6.885 ng
 RT: 9.916 min Scan# 1330
 Delta R.T. -0.188 min
 Lab File: BF140306.D
 Acq: 08 Nov 2024 18:29

Tgt Ion	Resp	Lower	Upper
165	100		
63	1.3	41.3	61.9#
89	1.0	62.6	94.0#
182	0.0	2.0	3.0#



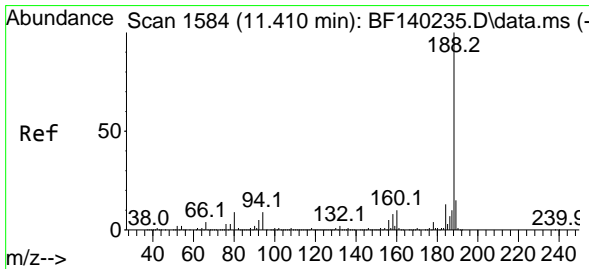
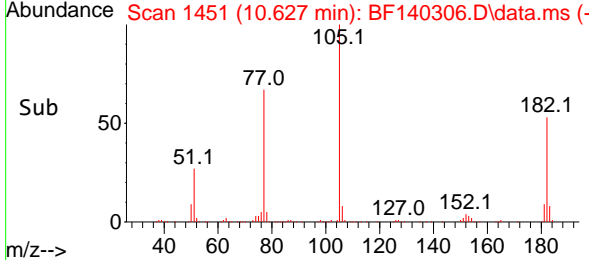
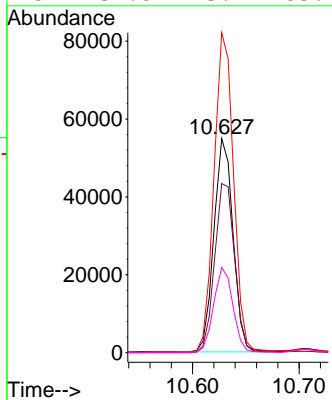
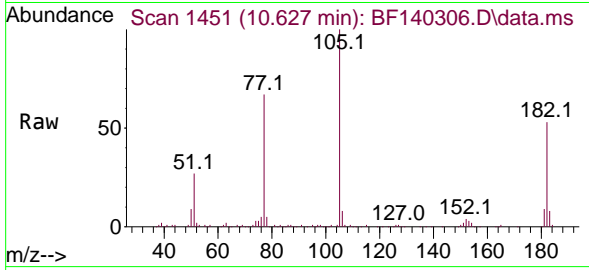


#63
 Azobenzene
 Concen: 5.745 ng
 RT: 10.627 min Scan# 1451
 Delta R.T. 0.006 min
 Lab File: BF140306.D
 Acq: 08 Nov 2024 18:29

Instrument : BNA_F
 ClientSampleId : BP-B4

Tgt Ion: 77 Resp: 68372

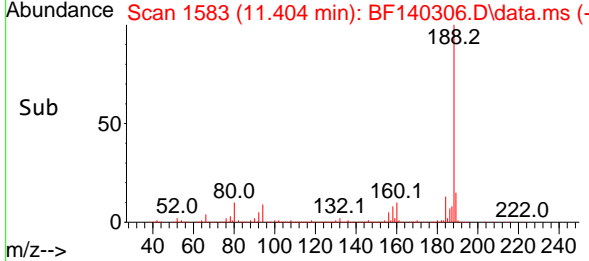
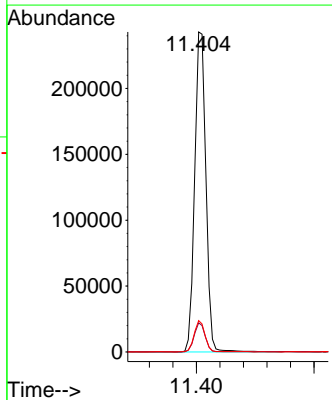
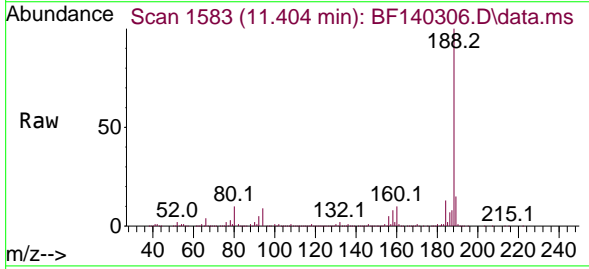
Ion	Ratio	Lower	Upper
77	100		
182	79.0	4.7	44.7#
105	149.5	0.0	40.0#
51	39.8	13.2	53.2

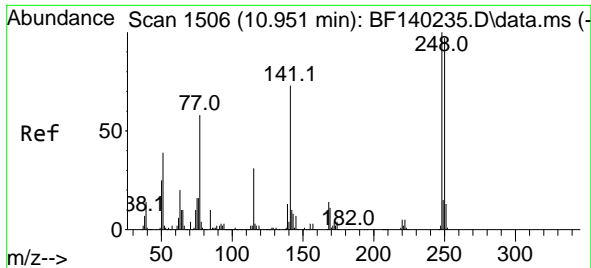


#64
 Phenanthrene-d10
 Concen: 20.000 ng
 RT: 11.404 min Scan# 1583
 Delta R.T. -0.006 min
 Lab File: BF140306.D
 Acq: 08 Nov 2024 18:29

Tgt Ion: 188 Resp: 321471

Ion	Ratio	Lower	Upper
188	100		
94	9.1	6.9	10.3
80	9.8	7.5	11.3



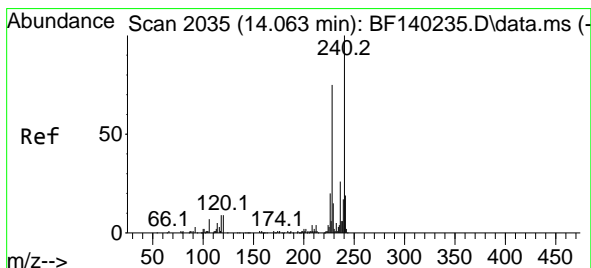
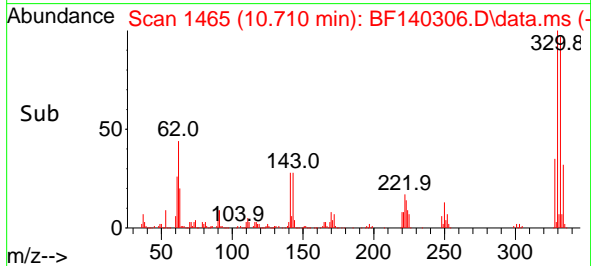
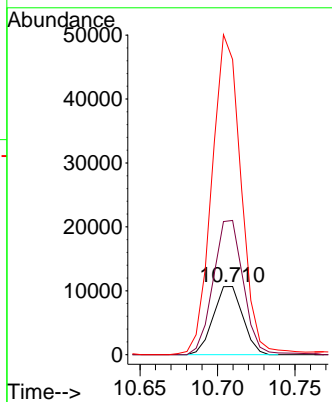
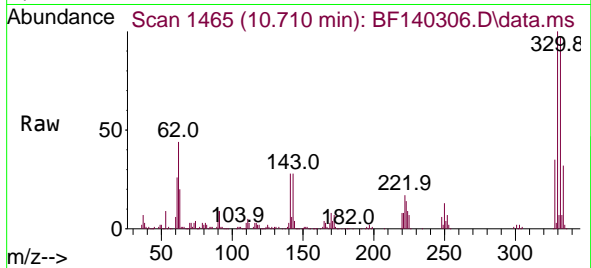


#67
 4-Bromophenyl-phenylether
 Concen: 4.079 ng
 RT: 10.710 min Scan# 14
 Delta R.T. -0.241 min
 Lab File: BF140306.D
 Acq: 08 Nov 2024 18:29

Instrument :
 BNA_F
 ClientSampleId :
 BP-B4

Tgt Ion:248 Resp: 14121

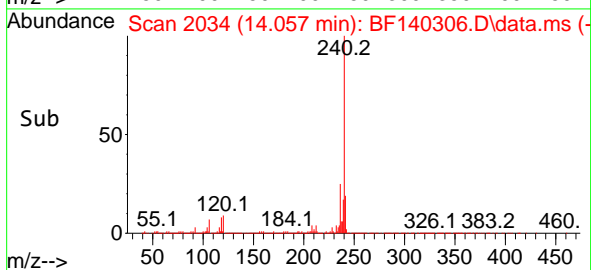
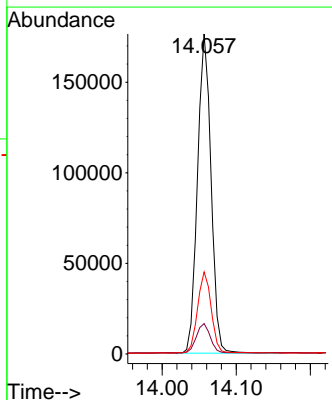
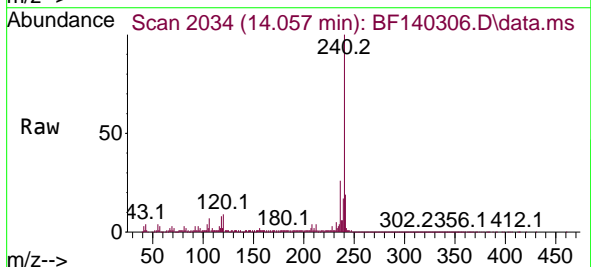
Ion	Ratio	Lower	Upper
248	100		
250	196.9	77.9	116.9#
141	432.8	58.6	88.0#

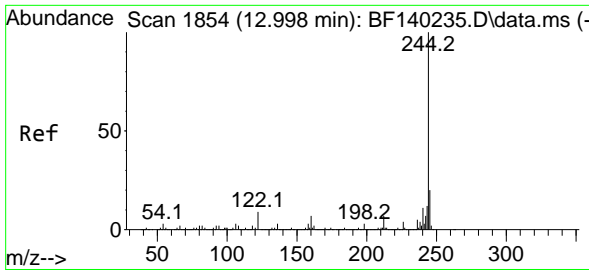


#76
 Chrysene-d12
 Concen: 20.000 ng
 RT: 14.057 min Scan# 2034
 Delta R.T. -0.006 min
 Lab File: BF140306.D
 Acq: 08 Nov 2024 18:29

Tgt Ion:240 Resp: 223641

Ion	Ratio	Lower	Upper
240	100		
120	9.5	7.5	11.3
236	25.6	20.9	31.3



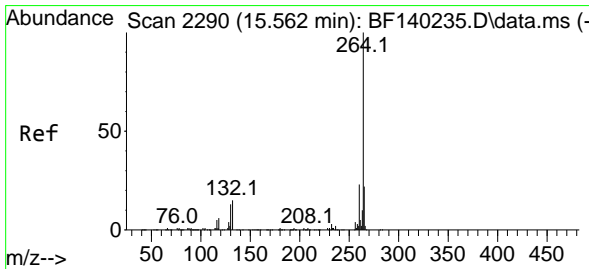
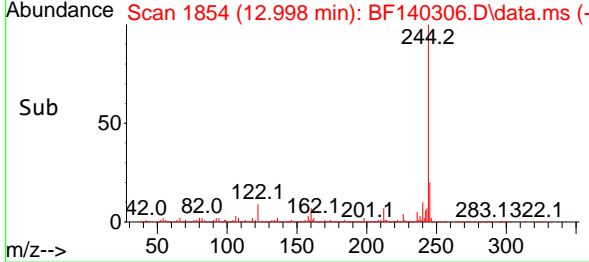
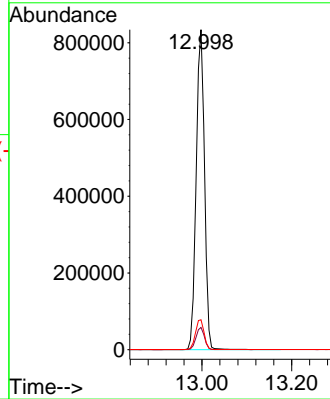
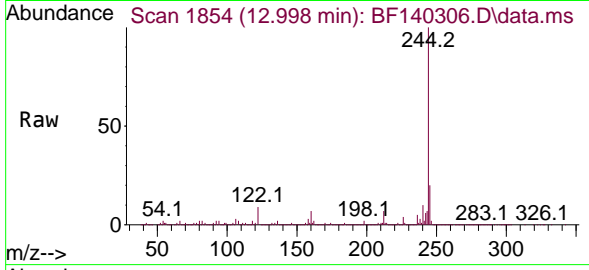


#79
 Terphenyl-d14
 Concen: 78.415 ng
 RT: 12.998 min Scan# 11
 Delta R.T. -0.000 min
 Lab File: BF140306.D
 Acq: 08 Nov 2024 18:29

Instrument :
 BNA_F
 ClientSampleId :
 BP-B4

Tgt Ion:244 Resp: 1070534

Ion	Ratio	Lower	Upper
244	100		
212	7.0	6.0	9.0
122	9.3	7.6	11.4



#86
 Perylene-d12
 Concen: 20.000 ng
 RT: 15.556 min Scan# 2289
 Delta R.T. -0.006 min
 Lab File: BF140306.D
 Acq: 08 Nov 2024 18:29

Tgt Ion:264 Resp: 176151

Ion	Ratio	Lower	Upper
264	100		
260	23.6	18.8	28.2
265	22.2	17.3	25.9

