

Data Path : \\74.0.250.170\SVOASRV\HPCHEM1\BNA_F\DATA\BF111217\
 Data File : BF100486.D
 Acq On : 12 Nov 2017 13:40
 Operator : SJ/JU
 Sample : I6402-11
 Misc :
 ALS Vial : 55 Sample Multiplier: 1

Instrument :
 BNA_F
 ClientSampleId :
 110717-JETT-E-U-B

Integration Parameters: rteint.p
 Integrator: RTE
 Smoothing : ON Filtering: 5
 Sampling : 1 Min Area: 3 % of largest Peak
 Start Thrs: 0.2 Max Peaks: 100
 Stop Thrs : 0 Peak Location: TOP

If leading or trailing edge < 100 prefer < Baseline drop else tangent >
 Peak separation: 5

Method : Z:\HPCHEM1\BNA_F\METHODS\8270-BF110817.M
 Title : ASP BNA STANDARDS FOR 5 POINT CALIBRATION

Signal : TIC

peak #	R.T. min	first scan	max scan	last scan	PK TY	peak height	corr. area	corr. % max.	% of total
1	2.210	17	21	27	rVB	89315	114291	2.81%	0.468%
2	5.122	512	516	529	rVB	287215	307265	7.54%	1.257%
3	5.516	579	583	586	rBV	1759166	1558802	38.26%	6.377%
4	6.516	749	753	764	rBV	1274294	1121528	27.53%	4.588%
5	6.669	774	779	782	rBV	2714983	2435210	59.77%	9.963%
6	6.898	815	818	822	rBV	902555	777324	19.08%	3.180%
7	7.063	841	846	849	rVB	3071671	3044365	74.72%	12.455%
8	7.463	909	914	917	rBV	2310923	2577266	63.26%	10.544%
9	8.181	1032	1036	1040	rBV	1143075	942871	23.14%	3.857%
10	9.257	1214	1219	1223	rBV	3877219	4074324	100.00%	16.669%
11	9.645	1282	1285	1294	rBV	178120	152482	3.74%	0.624%
12	9.939	1329	1335	1345	rVB	932820	929819	22.82%	3.804%
13	10.645	1452	1455	1462	rVB	56561	48682	1.19%	0.199%
14	10.722	1464	1468	1481	rBV	1442513	1340489	32.90%	5.484%
15	11.422	1583	1587	1591	rBV	839914	716118	17.58%	2.930%
16	12.822	1821	1825	1828	rBV	81909	57361	1.41%	0.235%
17	13.010	1852	1857	1860	rBV	3060517	2949593	72.39%	12.067%
18	13.527	1941	1945	1949	rBV	50850	40952	1.01%	0.168%
19	13.898	2004	2008	2018	rBV3	30756	47451	1.16%	0.194%
20	14.063	2032	2036	2043	rVB	737994	707195	17.36%	2.893%
21	15.545	2283	2288	2297	rBV	375998	499427	12.26%	2.043%

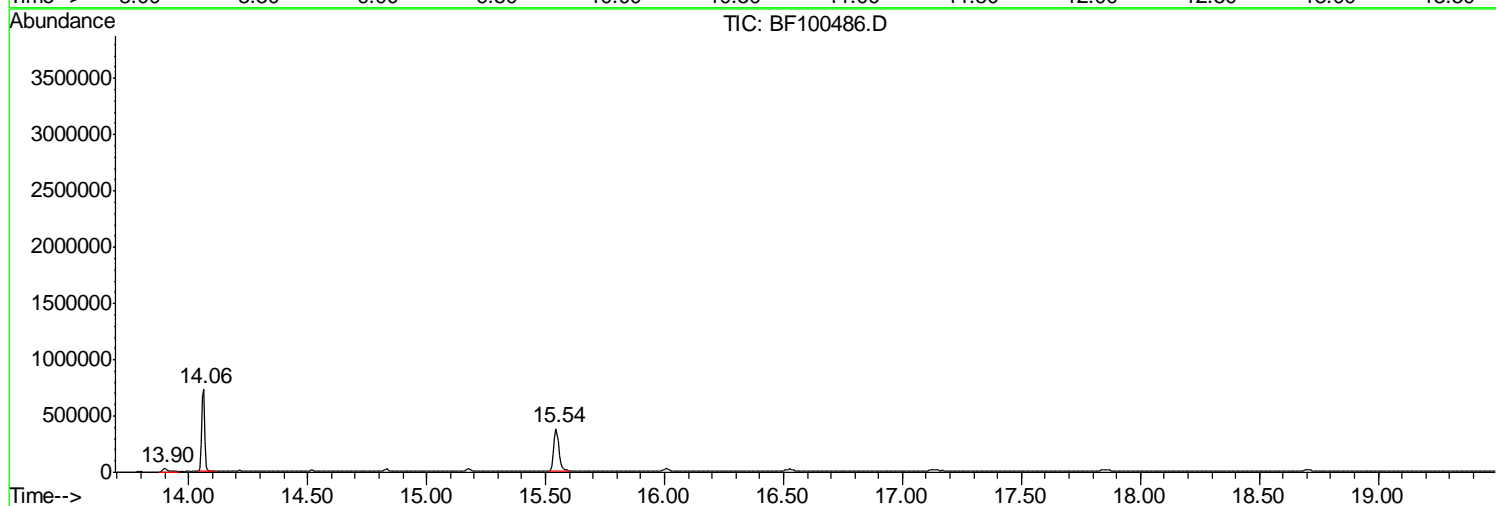
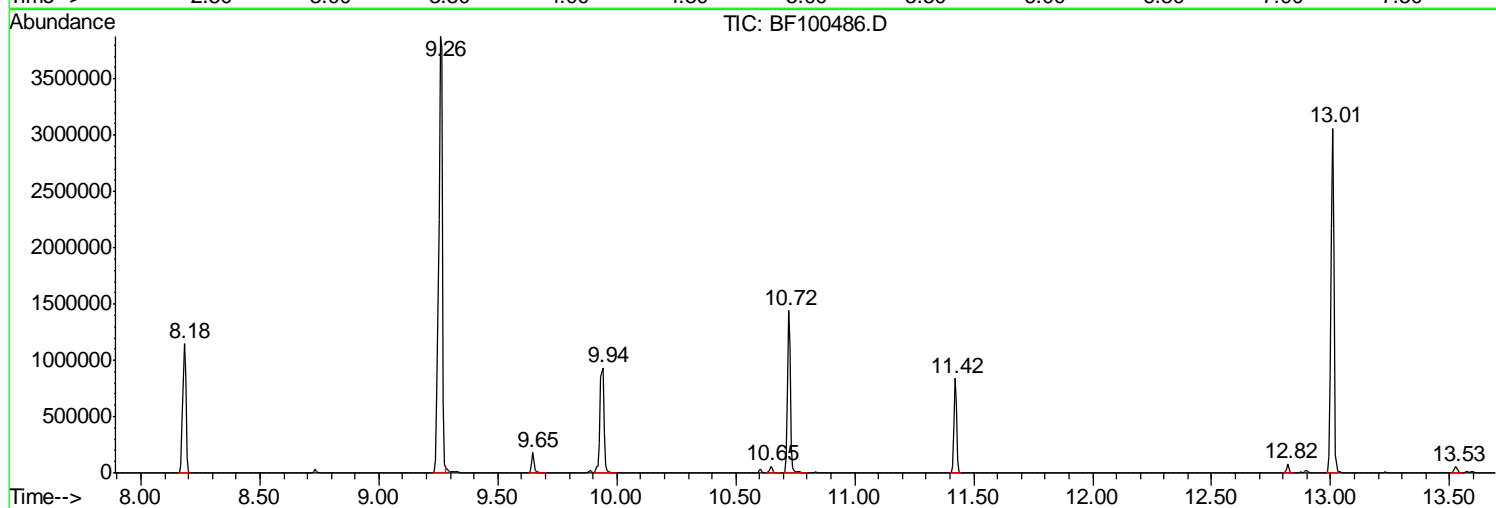
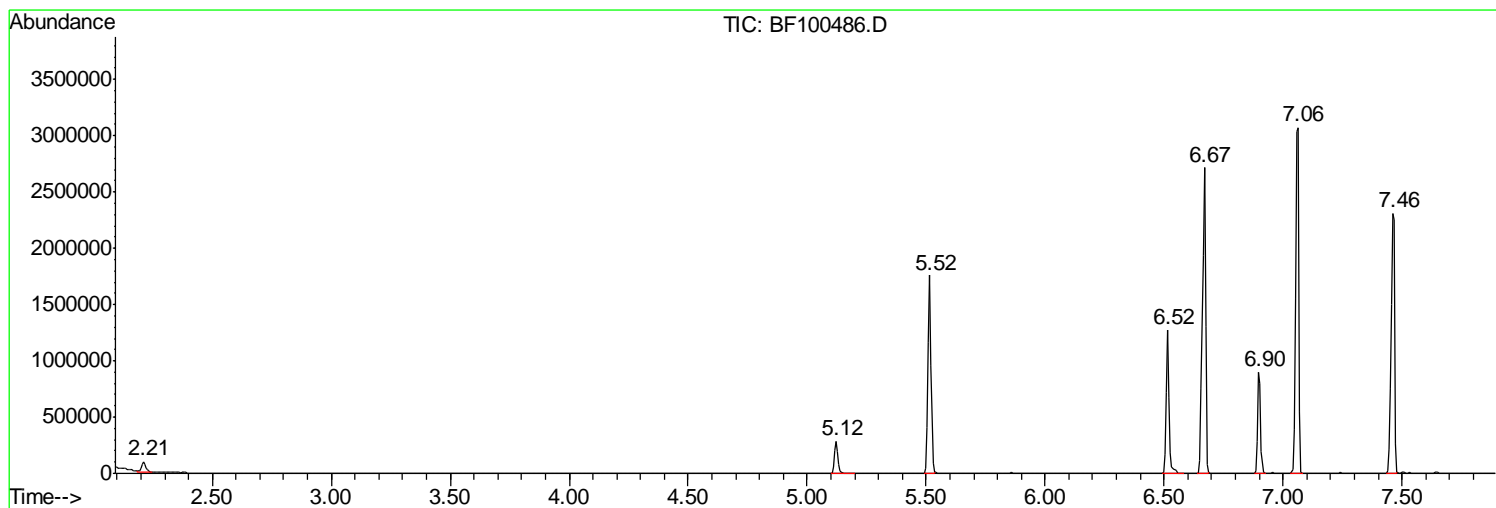
Sum of corrected areas: 24442815

Data Path : \\74.0.250.170\SVOASRV\HPCHEM1\BNA F\DATA\BF111217\
Data File : BF100486.D
Acq On : 12 Nov 2017 13:40
Operator : SJ/JU
Sample : I6402-11
Misc :
ALS Vial : 55 Sample Multiplier: 1

Instrument :
BNA_F
ClientSampleId :
110717-JETT-E-U-B

Quant Method : Z:\HPCHEM1\BNA F\METHODS\8270-BF110817.M
Quant Title : ASP BNA STANDARDS FOR 5 POINT CALIBRATION

TIC Library : C:\DATABASE\NIST11.L
TIC Integration Parameters: LSCINT.P



Data Path : \\74.0.250.170\SVOASRV\HPCHEM1\BNA F\DATA\BF111217\
 Data File : BF100486.D
 Acq On : 12 Nov 2017 13:40
 Operator : SJ/JU
 Sample : I6402-11
 Misc :
 ALS Vial : 55 Sample Multiplier: 1

Instrument :
 BNA_F
 ClientSampleID :
 110717-JETT-E-U-B

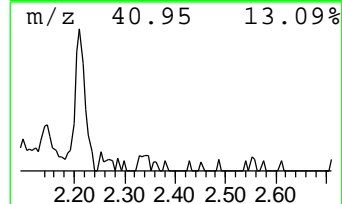
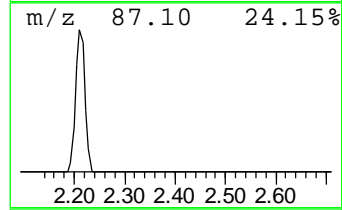
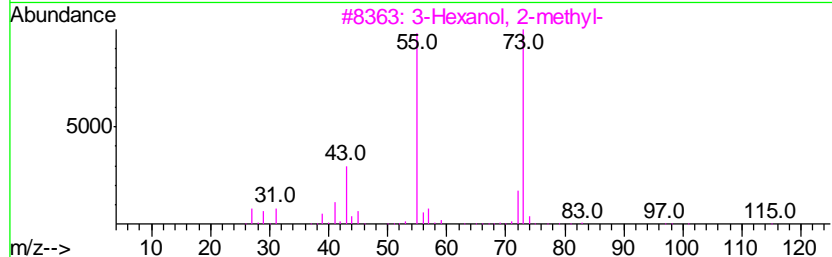
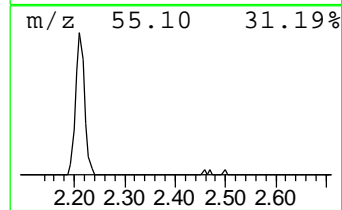
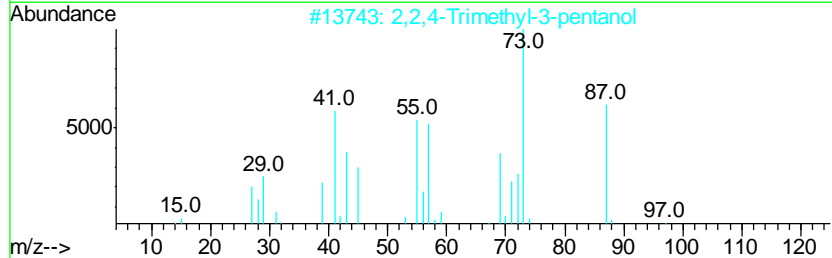
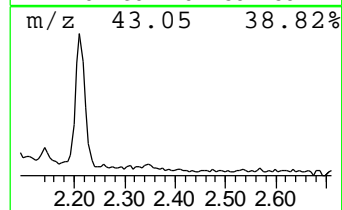
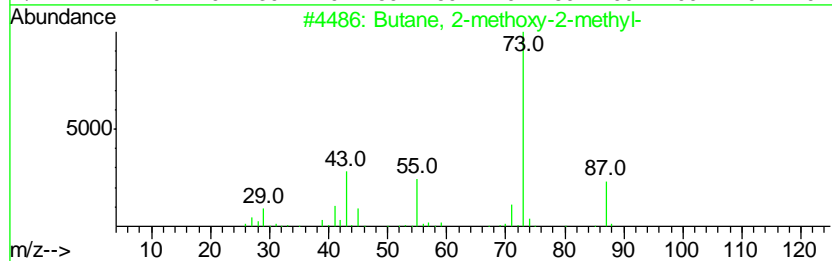
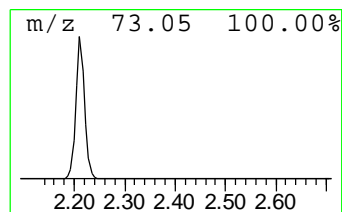
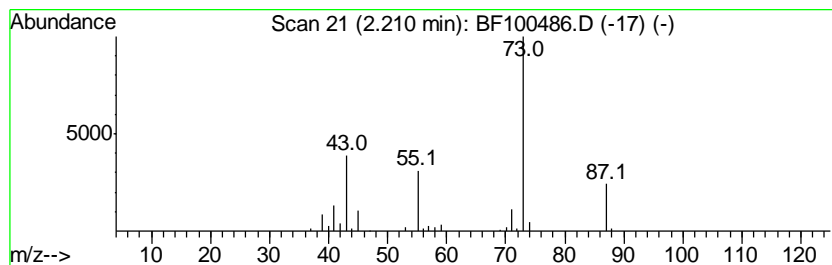
Quant Method : Z:\HPCHEM1\BNA F\METHODS\8270-BF110817.M
 Quant Title : ASP BNA STANDARDS FOR 5 POINT CALIBRATION

TIC Library : C:\DATABASE\NIST11.L
 TIC Integration Parameters: LSCINT.P

 Peak Number 1 Butane, 2-methoxy-2-methyl- Concentration Rank 4

R.T.	EstConc	Area	Relative to ISTD	R.T.
2.21	2.94 ng	114291	1,4-Dichlorobenzene-d4	6.90

Hit#	of	Tentative ID	MW	MolForm	CAS#	Qual
1	5	Butane, 2-methoxy-2-methyl-	102	C6H14O	000994-05-8	83
2		2,2,4-Trimethyl-3-pentanol	130	C8H18O	005162-48-1	39
3		3-Hexanol, 2-methyl-	116	C7H16O	000617-29-8	25
4		Boronic acid, ethyl-, dimethyl e...	102	C4H11BO2	007318-82-3	17
5		2-Methyl-5-hexen-3-ol	114	C7H14O	032815-70-6	17



Data Path : \\74.0.250.170\SVOASRV\HPCHEM1\BNA F\DATA\BF111217\
 Data File : BF100486.D
 Acq On : 12 Nov 2017 13:40
 Operator : SJ/JU
 Sample : I6402-11
 Misc :
 ALS Vial : 55 Sample Multiplier: 1

Instrument :
 BNA_F
 ClientSampleID :
 110717-JETT-E-U-B

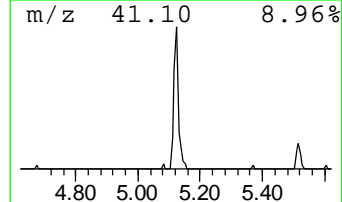
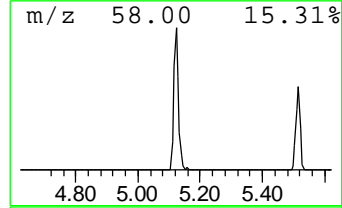
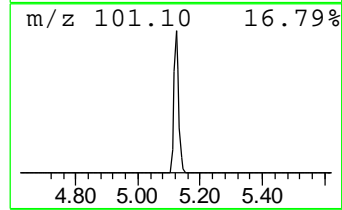
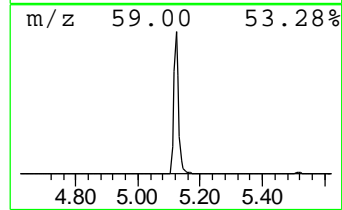
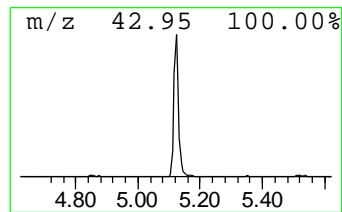
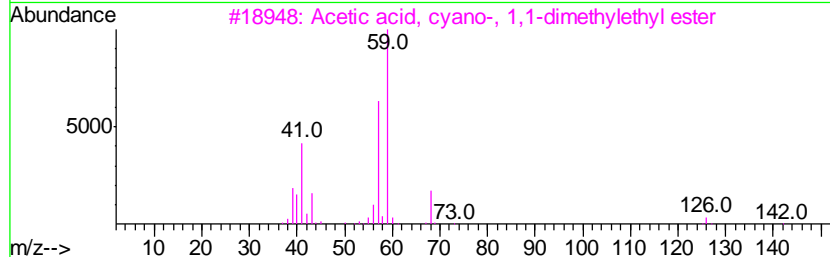
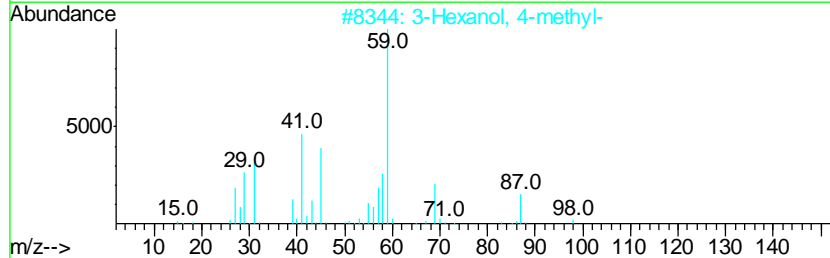
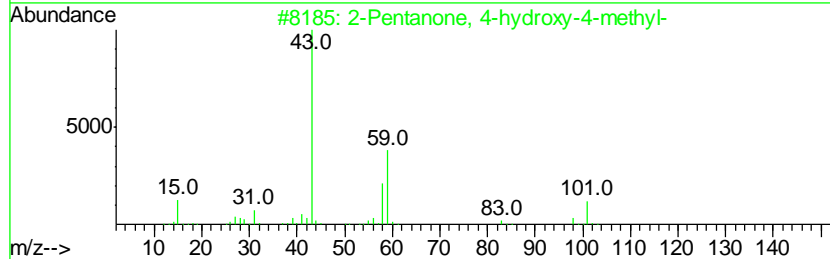
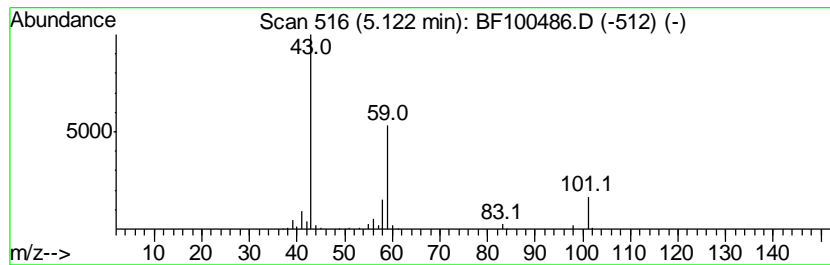
Quant Method : Z:\HPCHEM1\BNA F\METHODS\8270-BF110817.M
 Quant Title : ASP BNA STANDARDS FOR 5 POINT CALIBRATION

TIC Library : C:\DATABASE\NIST11.L
 TIC Integration Parameters: LSCINT.P

 Peak Number 2 2-Pentanone, 4-hydroxy-4-me... Concentration Rank 3

R.T.	EstConc	Area	Relative to ISTD	R.T.
5.12	7.91 ng	307265	1,4-Dichlorobenzene-d4	6.90

Hit#	of	Tentative ID	MW	MolForm	CAS#	Qual
1	5	2-Pentanone, 4-hydroxy-4-methyl-	116	C6H12O2	000123-42-2	64
2		3-Hexanol, 4-methyl-	116	C7H16O	000615-29-2	33
3		Acetic acid, cyano-, 1,1-dimethy...	141	C7H11NO2	001116-98-9	25
4		Acetic acid, 1,1-dimethylethyl e...	116	C6H12O2	000540-88-5	17
5		1-Propen-2-ol, acetate	100	C5H8O2	000108-22-5	10



Data Path : \\74.0.250.170\SVOASRV\HPCHEM1\BNA F\DATA\BF111217\
 Data File : BF100486.D
 Acq On : 12 Nov 2017 13:40
 Operator : SJ/JU
 Sample : I6402-11
 Misc :
 ALS Vial : 55 Sample Multiplier: 1

Instrument :
 BNA_F
 ClientSampleId :
 110717-JETT-E-U-B

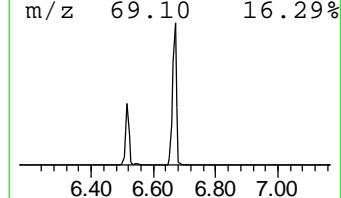
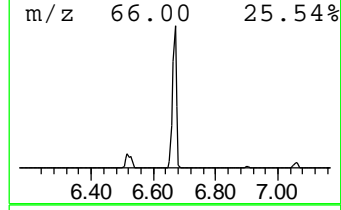
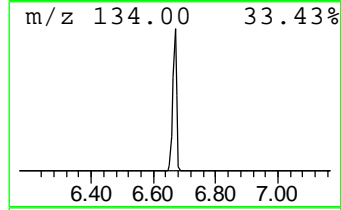
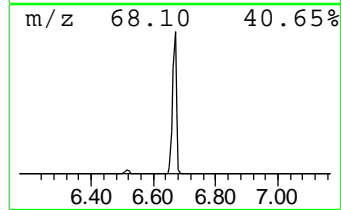
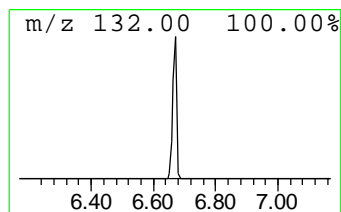
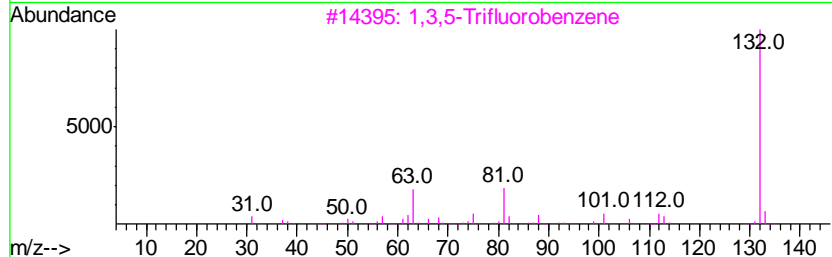
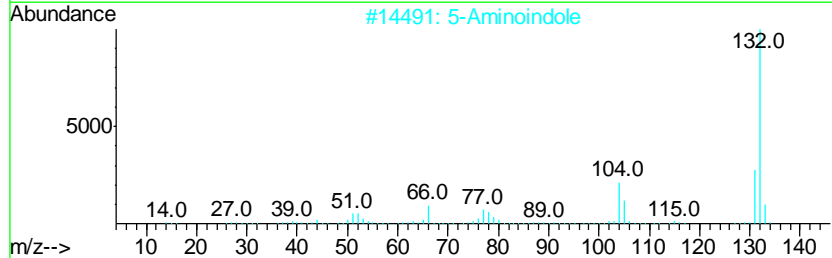
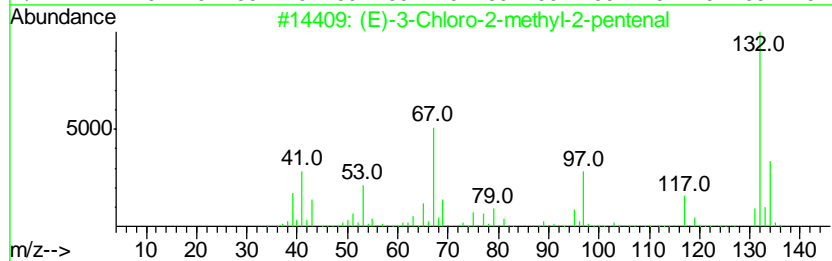
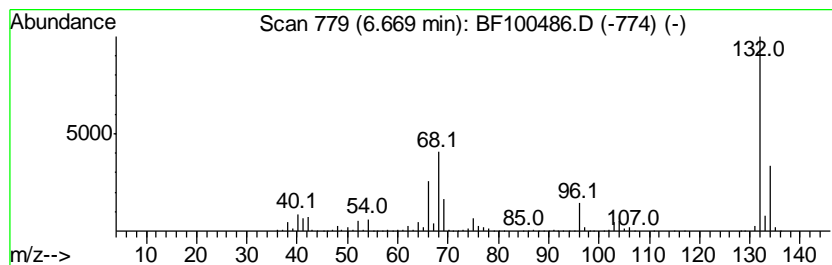
Quant Method : Z:\HPCHEM1\BNA F\METHODS\8270-BF110817.M
 Quant Title : ASP BNA STANDARDS FOR 5 POINT CALIBRATION

TIC Library : C:\DATABASE\NIST11.L
 TIC Integration Parameters: LSCINT.P

 Peak Number 3 unknown6.67 Concentration Rank 2

R.T.	EstConc	Area	Relative to ISTD	R.T.
6.67	62.66 ng	2435210	1,4-Dichlorobenzene-d4	6.90

Hit#	of	Tentative ID	MW	MolForm	CAS#	Qual
1	5	(E)-3-Chloro-2-methyl-2-pentenal	132	C6H9ClO	031357-76-3	27
2		5-Aminoindole	132	C8H8N2	005192-03-0	12
3		1,3,5-Trifluorobenzene	132	C6H3F3	000372-38-3	9
4		Bicyclo[4.2.0]octa-1,3,5-triene,...	132	C10H12	028749-81-7	9
5		5-Fluoro-2-chloropyrimidine	132	C4H2ClFN2	062802-42-0	9



Data Path : \\74.0.250.170\SVOASRV\HPCHEM1\BNA_F\DATA\BF111217\
Data File : BF100486.D
Acq On : 12 Nov 2017 13:40
Operator : SJ/JU
Sample : I6402-11
Misc :
ALS Vial : 55 Sample Multiplier: 1

Instrument :
BNA_F
ClientSampleId :
110717-JETT-E-U-B

Quant Method : Z:\HPCHEM1\BNA_F\METHODS\8270-BF110817.M
Quant Title : ASP BNA STANDARDS FOR 5 POINT CALIBRATION

TIC Library : C:\DATABASE\NIST11.L
TIC Integration Parameters: LSCINT.P

TIC Top Hit name	RT	EstConc	Units	Response	--Internal Standard--			
					#	RT	Resp	Conc
Butane, 2-methoxy...	2.21	2.9	ng	114291	1	6.90	777324	20.0
2-Pentanone, 4-hy...	5.12	7.9	ng	307265	1	6.90	777324	20.0
unknown6.67	6.67	62.7	ng	2435210	1	6.90	777324	20.0