

Data Path : \\74.0.250.170\SVOASRV\HPCHEM1\BNA_F\DATA\BF111317\
 Data File : BF100499.D
 Acq On : 13 Nov 2017 13:41
 Operator : SJ/JU
 Sample : I6396-05 20X
 Misc :
 ALS Vial : 4 Sample Multiplier: 1

Instrument :
 BNA_F
 ClientSampleId :
 LS-SOIL

Integration Parameters: rteint.p
 Integrator: RTE
 Smoothing : ON
 Sampling : 1
 Start Thrs: 0.2
 Stop Thrs : 0
 Filtering: 5
 Min Area: 3 % of largest Peak
 Max Peaks: 100
 Peak Location: TOP

If leading or trailing edge < 100 prefer < Baseline drop else tangent >
 Peak separation: 5

Method : Z:\HPCHEM1\BNA_F\METHODS\8270-BF110817.M
 Title : ASP BNA STANDARDS FOR 5 POINT CALIBRATION

Signal : TIC

peak #	R.T. min	first scan	max scan	last scan	PK TY	peak height	corr. area	corr. % max.	% of total
1	5.098	509	512	517	rVB	20765	19068	1.52%	0.123%
2	5.498	576	580	583	rBV	126213	114126	9.08%	0.736%
3	6.504	747	751	758	rVB	133950	122928	9.78%	0.792%
4	6.651	773	776	780	rVB	164351	125375	9.97%	0.808%
5	6.886	813	816	820	rVB	546232	480932	38.25%	3.100%
6	7.045	839	843	846	rBV	105750	92055	7.32%	0.593%
7	7.445	907	911	914	rVB	84799	68480	5.45%	0.441%
8	8.169	1030	1034	1037	rBV	718412	651870	51.84%	4.201%
9	8.192	1037	1038	1041	rVB	113555	56389	4.48%	0.363%
10	8.880	1152	1155	1159	rVB	44577	33514	2.67%	0.216%
11	8.980	1168	1172	1176	rBV	40089	28730	2.28%	0.185%
12	9.239	1213	1216	1220	rVB	167061	132208	10.51%	0.852%
13	9.580	1270	1274	1277	rBV	25258	23834	1.90%	0.154%
14	9.786	1303	1309	1311	rBV	20923	19427	1.55%	0.125%
15	9.927	1329	1333	1336	rVV	744840	646586	51.42%	4.167%
16	9.957	1336	1338	1341	rVB	79185	56027	4.46%	0.361%
17	10.127	1361	1367	1371	rBV	68996	56813	4.52%	0.366%
18	10.469	1422	1425	1429	rBV	80113	69999	5.57%	0.451%
19	10.627	1450	1452	1456	rVB	34382	26680	2.12%	0.172%
20	10.710	1463	1466	1470	rVB	111699	98398	7.83%	0.634%
21	10.833	1481	1487	1491	rVB4	12369	18716	1.49%	0.121%
22	11.021	1517	1519	1521	rVB2	18510	13740	1.09%	0.089%
23	11.145	1536	1540	1542	rBV4	17773	19511	1.55%	0.126%
24	11.168	1542	1544	1549	rVV	20942	22276	1.77%	0.144%
25	11.216	1549	1552	1555	rVB	80920	70168	5.58%	0.452%
26	11.257	1555	1559	1565	rBV4	18362	32501	2.58%	0.209%
27	11.310	1565	1568	1572	rVB	46751	42045	3.34%	0.271%
28	11.410	1582	1585	1587	rBV	640459	588529	46.81%	3.793%
29	11.439	1587	1590	1593	rVV	886212	775970	61.71%	5.001%
30	11.486	1593	1598	1601	rVV	217105	181636	14.45%	1.171%
31	11.515	1601	1603	1607	rVB2	30929	26740	2.13%	0.172%
32	11.639	1618	1624	1626	rBV2	113768	117369	9.33%	0.756%
33	11.704	1633	1635	1638	rBV2	20372	15676	1.25%	0.101%
34	11.739	1638	1641	1646	rVB3	31658	28371	2.26%	0.183%

Data Path : \\74.0.250.170\SVOASRV\HPCHEM1\BNA_F\DATA\BF111317\
 Data File : BF100499.D
 Acq On : 13 Nov 2017 13:41
 Operator : SJ/JU
 Sample : I6396-05 20X
 Misc :
 ALS Vial : 4 Sample Multiplier: 1

Instrument :
 BNA_F
 ClientSampleId :
 LS-SOIL

Integration Parameters: rteint.p
 Integrator: RTE
 Smoothing : ON
 Sampling : 1
 Start Thrs: 0.2
 Stop Thrs : 0
 Filtering: 5
 Min Area: 3 % of largest Peak
 Max Peaks: 100
 Peak Location: TOP

If leading or trailing edge < 100 prefer < Baseline drop else tangent >
 Peak separation: 5

Method : Z:\HPCHEM1\BNA_F\METHODS\8270-BF110817.M
 Title : ASP BNA STANDARDS FOR 5 POINT CALIBRATION

35	11.910	1664	1670	1673	rBV	123838	134555	10.70%	0.867%
36	11.939	1673	1675	1679	rVB	187750	146951	11.69%	0.947%
37	11.986	1679	1683	1686	rBV	58705	51975	4.13%	0.335%
38	12.027	1686	1690	1692	rBV2	164847	190264	15.13%	1.226%
39	12.045	1692	1693	1696	rVB	91710	55050	4.38%	0.355%
40	12.092	1696	1701	1703	rBV4	14910	22988	1.83%	0.148%
41	12.204	1718	1720	1722	rBV	93877	82498	6.56%	0.532%
42	12.227	1722	1724	1727	rVB	102005	85394	6.79%	0.550%
43	12.357	1744	1746	1748	rBV	30226	23633	1.88%	0.152%
44	12.386	1748	1751	1753	rVB	26223	17654	1.40%	0.114%
45	12.410	1753	1755	1757	rVB	29534	21715	1.73%	0.140%
46	12.463	1760	1764	1767	rBV	73539	83410	6.63%	0.538%
47	12.498	1767	1770	1772	rVV2	36728	46252	3.68%	0.298%
48	12.545	1775	1778	1783	rVB	117681	107758	8.57%	0.694%
49	12.627	1788	1792	1795	rVB	1369297	1166558	92.78%	7.518%
50	12.668	1795	1799	1800	rBV	21873	21229	1.69%	0.137%
51	12.686	1800	1802	1805	rVV2	31420	27614	2.20%	0.178%
52	12.710	1805	1806	1809	rVB2	17822	15019	1.19%	0.097%
53	12.751	1809	1813	1815	rBV2	34564	48854	3.89%	0.315%
54	12.774	1815	1817	1820	rVB	40299	34434	2.74%	0.222%
55	12.857	1824	1831	1834	rBV2	1106692	1178309	93.71%	7.594%
56	12.898	1836	1838	1843	rVB2	69548	68881	5.48%	0.444%
57	12.968	1847	1850	1852	rBV	75901	78469	6.24%	0.506%
58	12.992	1852	1854	1855	rVV	116641	99264	7.89%	0.640%
59	13.010	1855	1857	1861	rVB	89551	77925	6.20%	0.502%
60	13.068	1862	1867	1871	rBV2	91853	160575	12.77%	1.035%
61	13.098	1871	1872	1874	rVB	24253	14832	1.18%	0.096%
62	13.157	1879	1882	1883	rVV2	67670	76880	6.11%	0.495%
63	13.180	1883	1886	1888	rVB	117747	125621	9.99%	0.810%
64	13.210	1888	1891	1893	rBV2	22522	21814	1.73%	0.141%
65	13.245	1894	1897	1899	rBV	44424	39447	3.14%	0.254%
66	13.280	1899	1903	1906	rVV2	131797	142288	11.32%	0.917%
67	13.310	1906	1908	1911	rVB	45072	41466	3.30%	0.267%
68	13.339	1911	1913	1917	rBV3	31613	30853	2.45%	0.199%
69	13.374	1917	1919	1921	rBV	68591	53529	4.26%	0.345%
70	13.404	1921	1924	1928	rVV2	66391	66882	5.32%	0.431%
71	13.480	1934	1937	1941	rBV4	23089	39618	3.15%	0.255%

Data Path : \\74.0.250.170\SVOASRV\HPCHEM1\BNA_F\DATA\BF111317\
 Data File : BF100499.D
 Acq On : 13 Nov 2017 13:41
 Operator : SJ/JU
 Sample : I6396-05 20X
 Misc :
 ALS Vial : 4 Sample Multiplier: 1

Instrument :
 BNA_F
 ClientSampleId :
 LS-SOIL

Integration Parameters: rteint.p
 Integrator: RTE
 Smoothing : ON Filtering: 5
 Sampling : 1 Min Area: 3 % of largest Peak
 Start Thrs: 0.2 Max Peaks: 100
 Stop Thrs : 0 Peak Location: TOP

If leading or trailing edge < 100 prefer < Baseline drop else tangent >
 Peak separation: 5

Method : Z:\HPCHEM1\BNA_F\METHODS\8270-BF110817.M
 Title : ASP BNA STANDARDS FOR 5 POINT CALIBRATION

72	13.551	1947	1949	1950	rBV2	28300	20557	1.63%	0.132%
73	13.627	1960	1962	1964	rVB3	22074	14244	1.13%	0.092%
74	13.686	1969	1972	1976	rVB	184428	183816	14.62%	1.185%
75	13.798	1986	1991	1994	rBV2	136193	207915	16.54%	1.340%
76	13.827	1994	1996	1998	rVV	122957	108307	8.61%	0.698%
77	13.851	1998	2000	2004	rVV2	89256	135703	10.79%	0.875%
78	13.892	2004	2007	2010	rVB	213277	191365	15.22%	1.233%
79	14.045	2025	2033	2036	rBV3	841718	1257376	100.00%	8.104%
80	14.074	2036	2038	2044	rVB	589305	553410	44.01%	3.567%
81	14.156	2050	2052	2056	rBV2	45420	47540	3.78%	0.306%
82	14.274	2068	2072	2075	rBV2	69973	94714	7.53%	0.610%
83	14.304	2075	2077	2079	rVV	37459	31941	2.54%	0.206%
84	14.398	2091	2093	2095	rBV3	42298	37674	3.00%	0.243%
85	14.433	2096	2099	2102	rVV	133331	128187	10.19%	0.826%
86	14.468	2102	2105	2108	rVB2	82242	74747	5.94%	0.482%
87	14.556	2118	2120	2122	rBV2	61006	50893	4.05%	0.328%
88	14.580	2122	2124	2128	rVB3	44046	41175	3.27%	0.265%
89	15.098	2207	2212	2215	rBV2	421657	724679	57.63%	4.671%
90	15.203	2226	2230	2233	rBV	73095	88479	7.04%	0.570%
91	15.398	2259	2263	2269	rVB	227466	311928	24.81%	2.010%
92	15.462	2270	2274	2280	rBV	339189	427999	34.04%	2.758%
93	15.527	2280	2285	2288	rVV	380396	504451	40.12%	3.251%
94	15.556	2288	2290	2297	rVB2	112397	165821	13.19%	1.069%
95	17.009	2531	2537	2547	rVB2	141944	305667	24.31%	1.970%
96	17.456	2609	2613	2624	rVB2	101015	230237	18.31%	1.484%

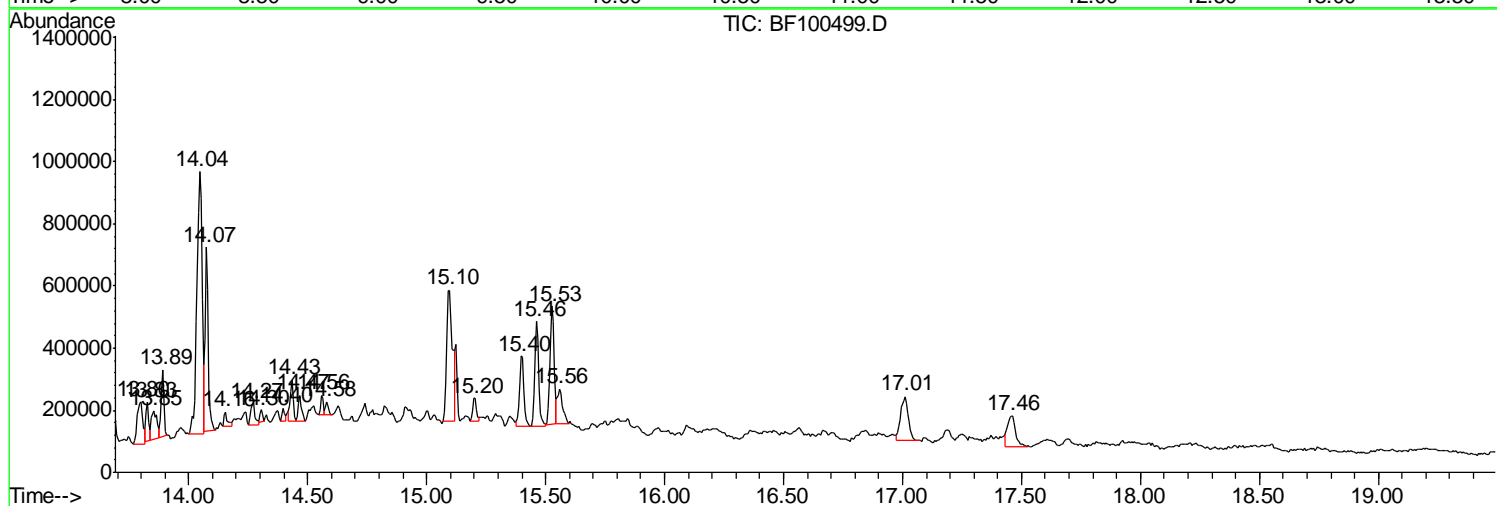
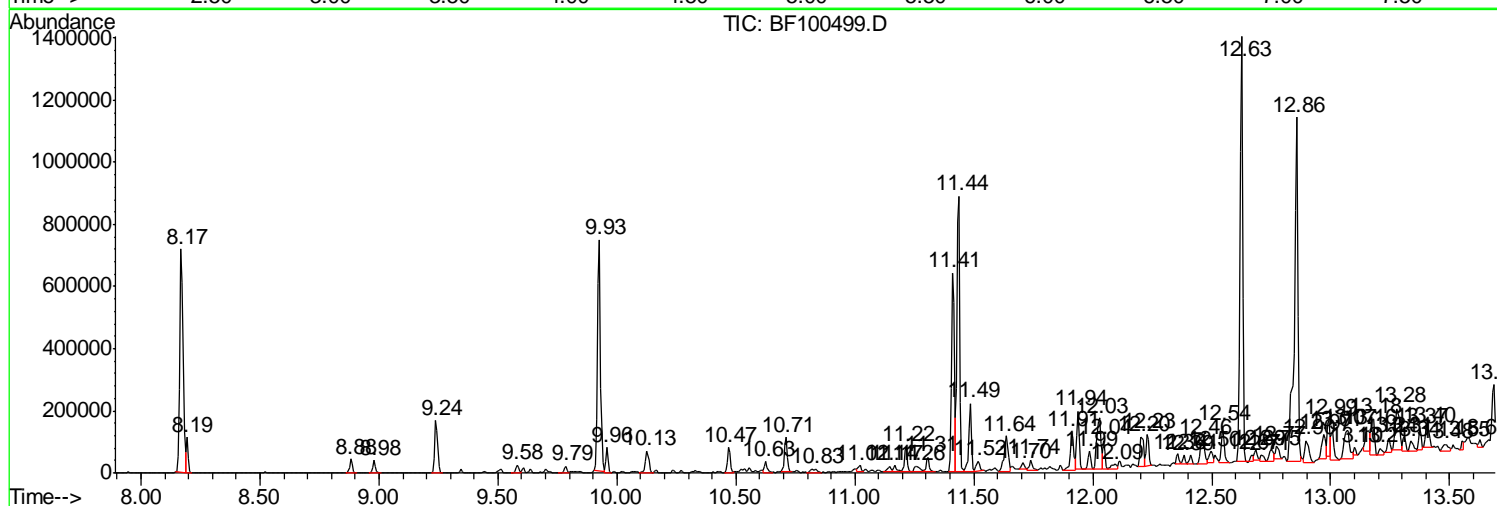
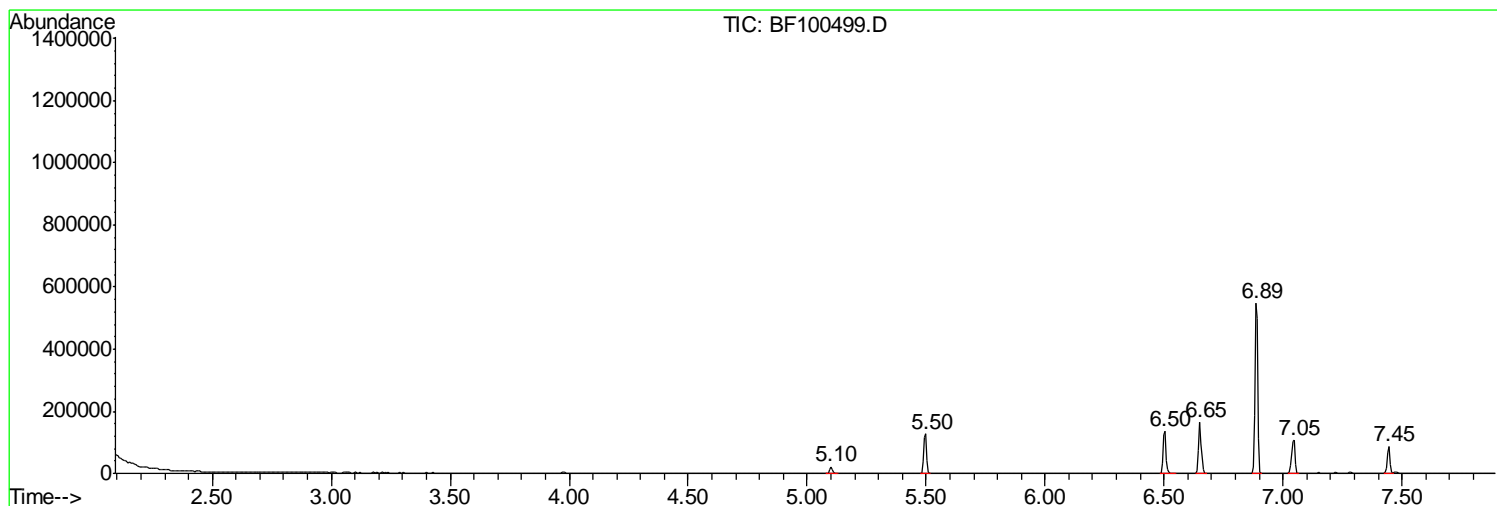
Sum of corrected areas: 15515970

Data Path : \\74.0.250.170\SVOASRV\HPCHEM1\BNA F\DATA\BF111317\
 Data File : BF100499.D
 Acq On : 13 Nov 2017 13:41
 Operator : SJ/JU
 Sample : I6396-05 20X
 Misc :
 ALS Vial : 4 Sample Multiplier: 1

Instrument :
 BNA_F
 ClientSampleId :
 LS-SOIL

Quant Method : Z:\HPCHEM1\BNA F\METHODS\8270-BF110817.M
 Quant Title : ASP BNA STANDARDS FOR 5 POINT CALIBRATION

TIC Library : C:\DATABASE\NIST11.L
 TIC Integration Parameters: LSCINT.P



Data Path : \\74.0.250.170\SVOASRV\HPCHEM1\BNA F\DATA\BF111317\
 Data File : BF100499.D
 Acq On : 13 Nov 2017 13:41
 Operator : SJ/JU
 Sample : I6396-05 20X
 Misc :
 ALS Vial : 4 Sample Multiplier: 1

Instrument :
 BNA_F
 ClientSampled :
 LS-SOIL

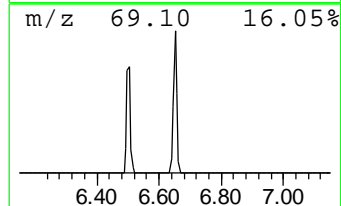
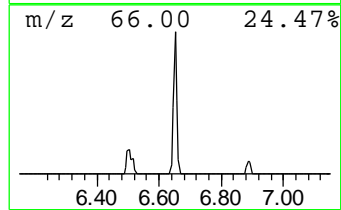
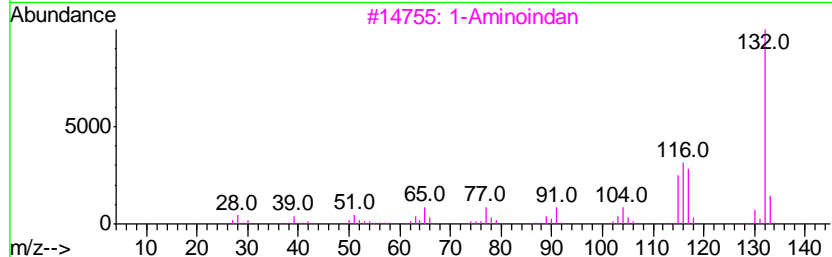
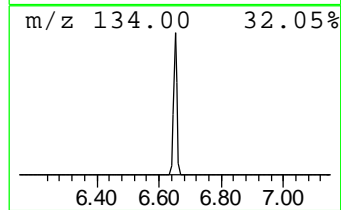
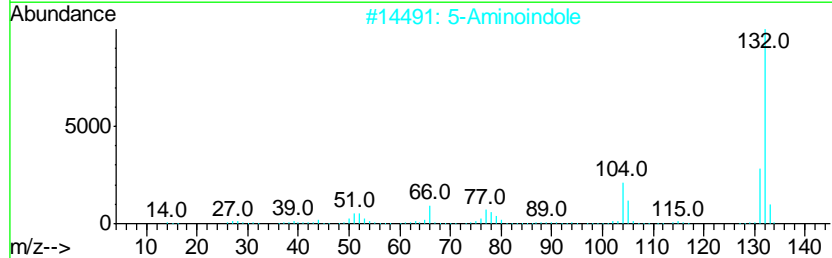
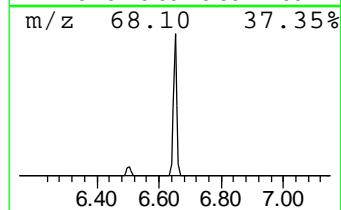
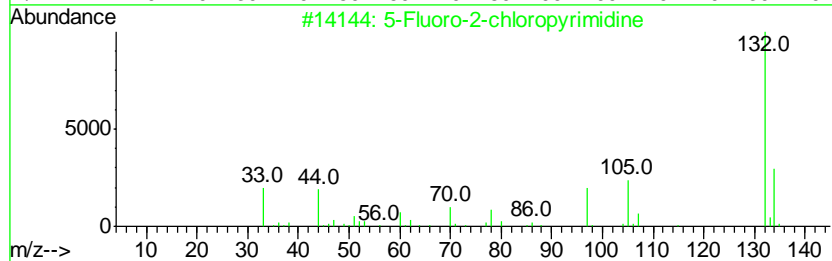
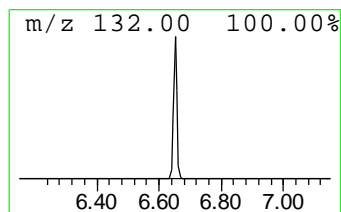
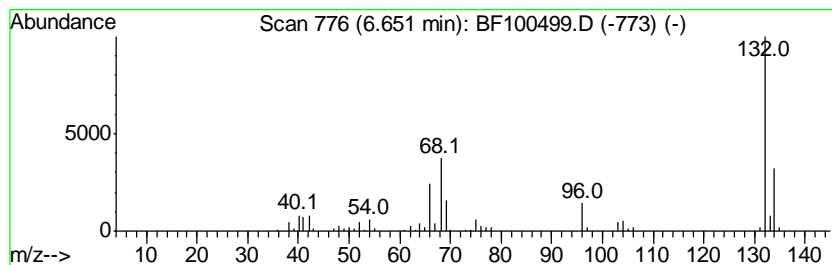
Quant Method : Z:\HPCHEM1\BNA F\METHODS\8270-BF110817.M
 Quant Title : ASP BNA STANDARDS FOR 5 POINT CALIBRATION

TIC Library : C:\DATABASE\NIST11.L
 TIC Integration Parameters: LSCINT.P

 Peak Number 1 unknown6.65 Concentration Rank 3

R.T.	EstConc	Area	Relative to ISTD	R.T.
6.65	5.21 ng	125375	1,4-Dichlorobenzene-d4	6.89

Hit#	of	Tentative ID	MW	MolForm	CAS#	Qual
1	5	5-Fluoro-2-chloropyrimidine	132	C4H2ClFN2	062802-42-0	25
2		5-Aminoindole	132	C8H8N2	005192-03-0	10
3		1-Aminoindan	133	C9H11N	034698-41-4	9
4		(E)-3-Chloro-2-methyl-2-pentenal	132	C6H9ClO	031357-76-3	9
5		1-Methylpyrrolo[1,2-a]pyrazine	132	C8H8N2	064608-59-9	9



Data Path : \\74.0.250.170\SVOASRV\HPCHEM1\BNA F\DATA\BF111317\
 Data File : BF100499.D
 Acq On : 13 Nov 2017 13:41
 Operator : SJ/JU
 Sample : I6396-05 20X
 Misc :
 ALS Vial : 4 Sample Multiplier: 1

Instrument :
 BNA_F
 ClientSampled :
 LS-SOIL

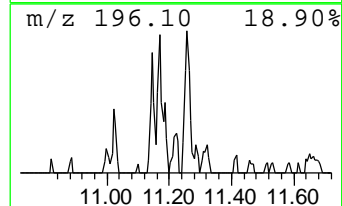
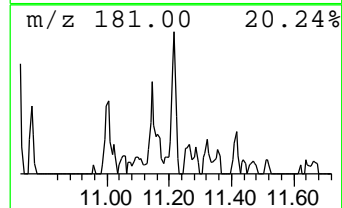
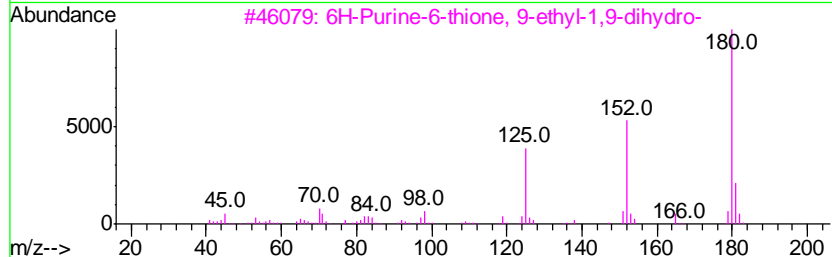
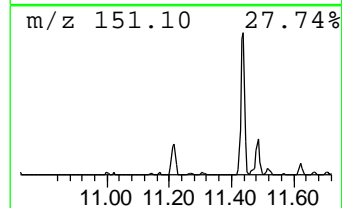
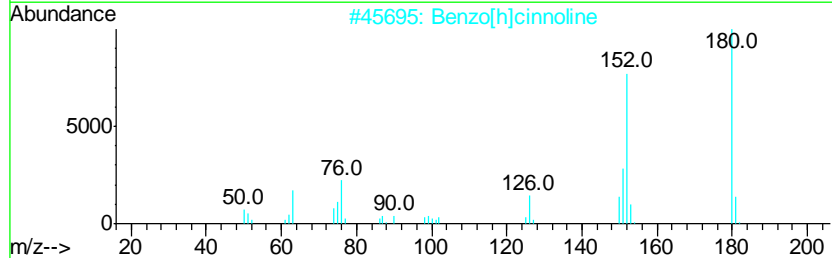
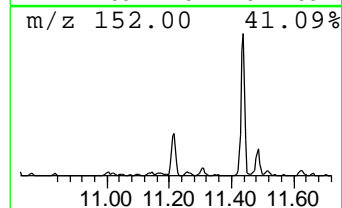
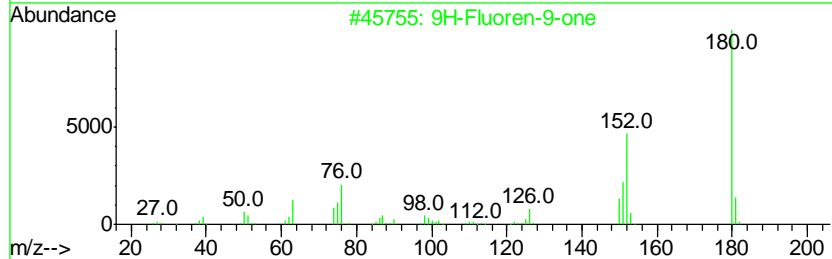
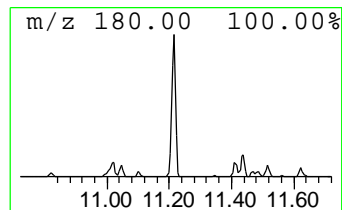
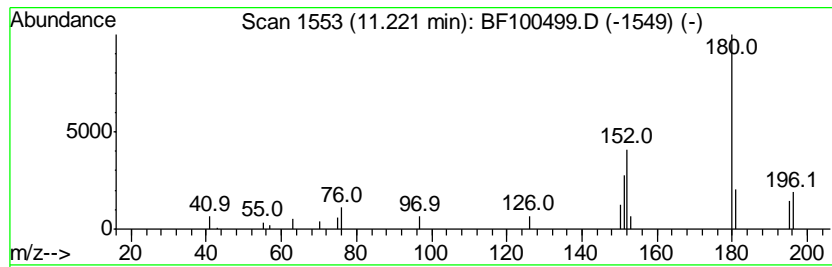
Quant Method : Z:\HPCHEM1\BNA F\METHODS\8270-BF110817.M
 Quant Title : ASP BNA STANDARDS FOR 5 POINT CALIBRATION

TIC Library : C:\DATABASE\NIST11.L
 TIC Integration Parameters: LSCINT.P

 Peak Number 3 9H-Fluoren-9-one Concentration Rank 16

R.T.	EstConc	Area	Relative to ISTD	R.T.
11.22	2.38 ng	70168	Phenanthrene-d10	11.41

Hit#	of	Tentative ID	MW	MolForm	CAS#	Qual
1	5	9H-Fluoren-9-one	180	C13H8O	000486-25-9	96
2		Benzo[h]cinnoline	180	C12H8N2	000230-31-9	90
3		6H-Purine-6-thione, 9-ethyl-1,9-...	180	C7H8N4S	005427-20-3	59
4		1H-Phenalen-1-one	180	C13H8O	000548-39-0	52
5		2,3-Diazaphenanthrene	180	C12H8N2	000229-72-1	50



Data Path : \\74.0.250.170\SVOASRV\HPCHEM1\BNA F\DATA\BF111317\
 Data File : BF100499.D
 Acq On : 13 Nov 2017 13:41
 Operator : SJ/JU
 Sample : I6396-05 20X
 Misc :
 ALS Vial : 4 Sample Multiplier: 1

Instrument :
 BNA_F
 ClientSampled :
 LS-SOIL

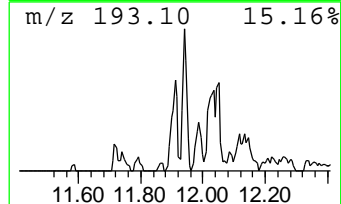
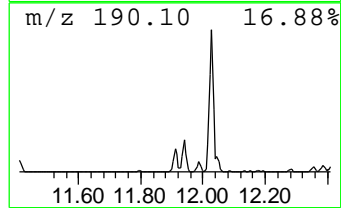
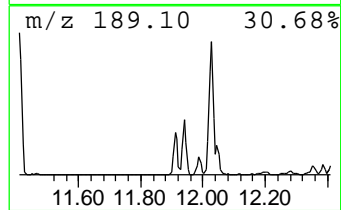
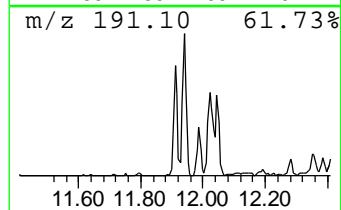
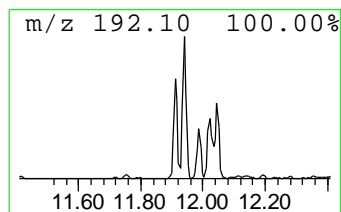
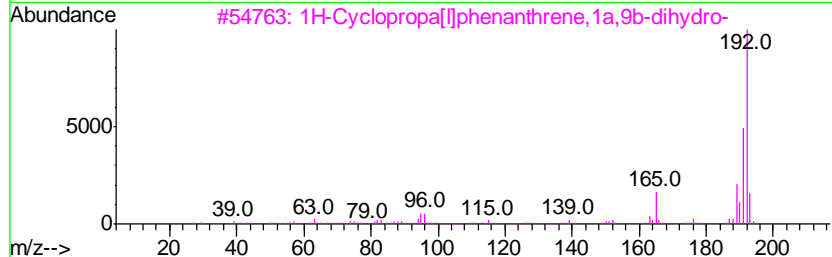
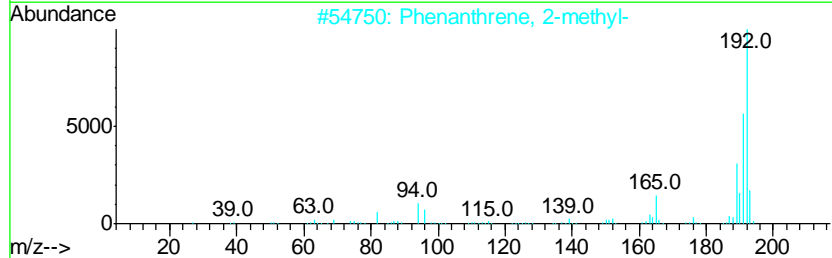
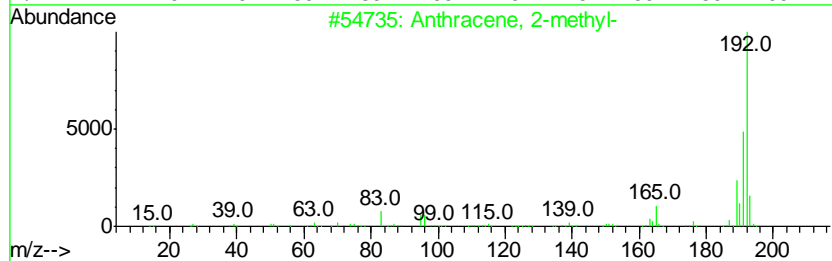
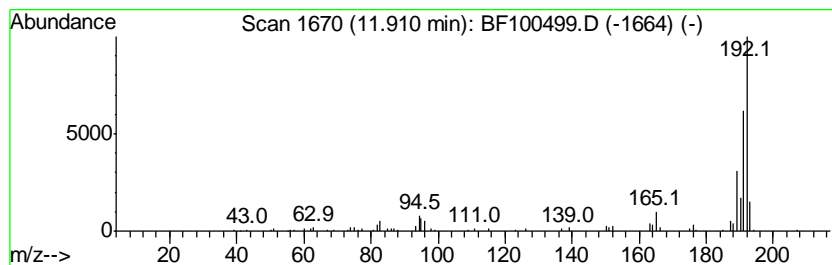
Quant Method : Z:\HPCHEM1\BNA F\METHODS\8270-BF110817.M
 Quant Title : ASP BNA STANDARDS FOR 5 POINT CALIBRATION

TIC Library : C:\DATABASE\NIST11.L
 TIC Integration Parameters: LSCINT.P

 Peak Number 4 Anthracene, 2-methyl- Concentration Rank 5

R.T.	EstConc	Area	Relative to ISTD	R.T.
11.91	4.57 ng	134555	Phenanthrene-d10	11.41

Hit#	of	Tentative ID	MW	MolForm	CAS#	Qual
1	5	Anthracene, 2-methyl-	192	C15H12	000613-12-7	93
2		Phenanthrene, 2-methyl-	192	C15H12	002531-84-2	93
3		1H-Cyclopropa[1]phenanthrene,1a,...	192	C15H12	000949-41-7	91
4		Phenanthrene, 1-methyl-	192	C15H12	000832-69-9	91
5		Anthracene, 1-methyl-	192	C15H12	000610-48-0	91



Data Path : \\74.0.250.170\SVOASRV\HPCHEM1\BNA F\DATA\BF111317\
 Data File : BF100499.D
 Acq On : 13 Nov 2017 13:41
 Operator : SJ/JU
 Sample : I6396-05 20X
 Misc :
 ALS Vial : 4 Sample Multiplier: 1

Instrument :
 BNA_F
 ClientSampleID :
 LS-SOIL

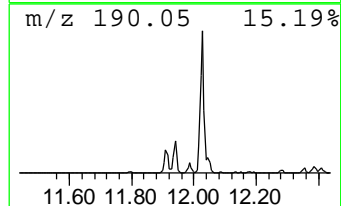
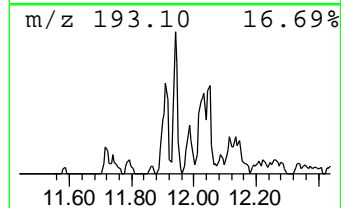
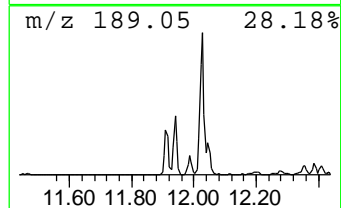
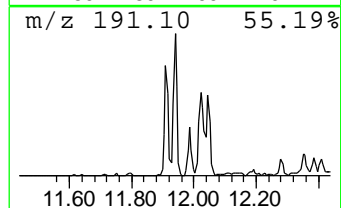
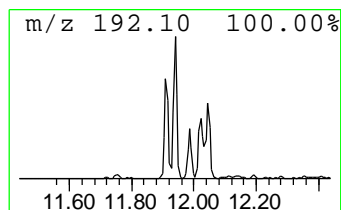
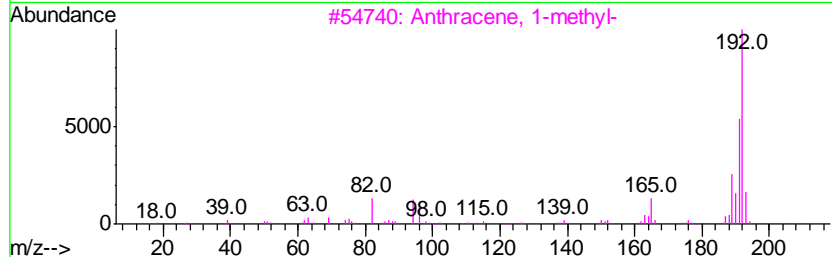
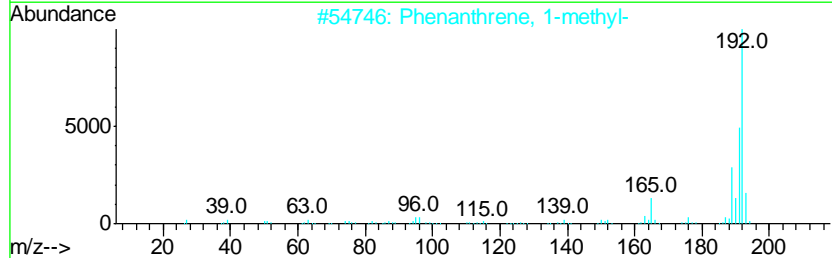
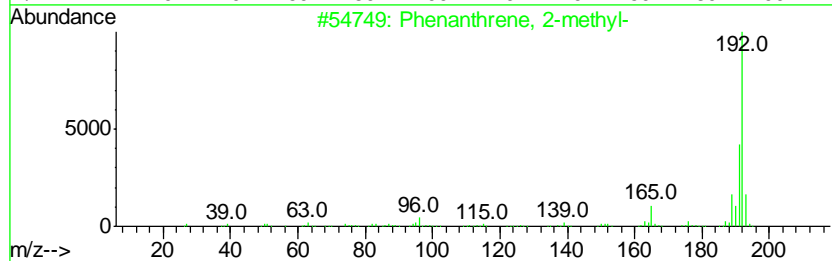
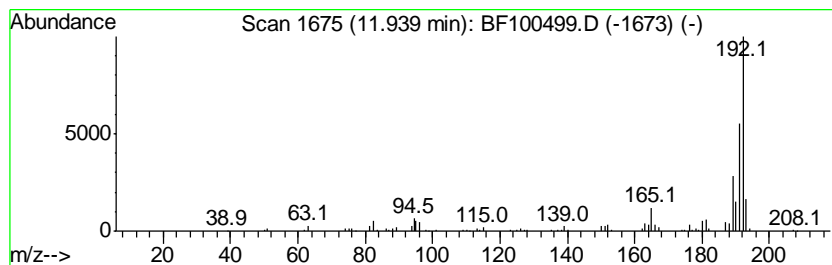
Quant Method : Z:\HPCHEM1\BNA F\METHODS\8270-BF110817.M
 Quant Title : ASP BNA STANDARDS FOR 5 POINT CALIBRATION

TIC Library : C:\DATABASE\NIST11.L
 TIC Integration Parameters: LSCINT.P

 Peak Number 5 Phenanthrene, 2-methyl- Concentration Rank 4

R.T.	EstConc	Area	Relative to ISTD	R.T.
11.94	4.99 ng	146951	Phenanthrene-d10	11.41

Hit#	of	Tentative ID	MW	MolForm	CAS#	Qual
1	5	Phenanthrene, 2-methyl-	192	C15H12	002531-84-2	97
2		Phenanthrene, 1-methyl-	192	C15H12	000832-69-9	97
3		Anthracene, 1-methyl-	192	C15H12	000610-48-0	95
4		Anthracene, 2-methyl-	192	C15H12	000613-12-7	94
5		Anthracene, 9-methyl-	192	C15H12	000779-02-2	93



Data Path : \\74.0.250.170\SVOASRV\HPCHEM1\BNA F\DATA\BF111317\
 Data File : BF100499.D
 Acq On : 13 Nov 2017 13:41
 Operator : SJ/JU
 Sample : I6396-05 20X
 Misc :
 ALS Vial : 4 Sample Multiplier: 1

Instrument :
 BNA_F
 ClientSampleID :
 LS-SOIL

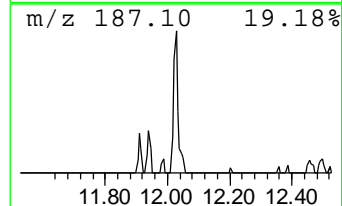
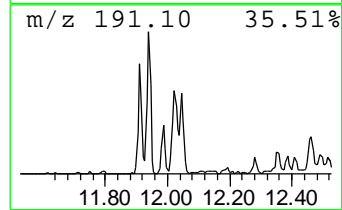
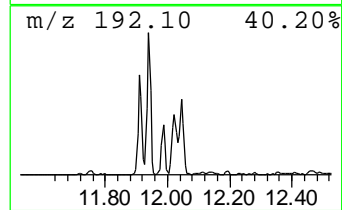
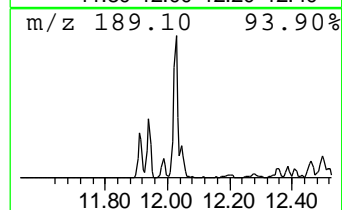
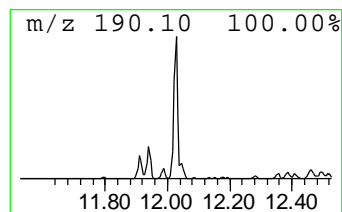
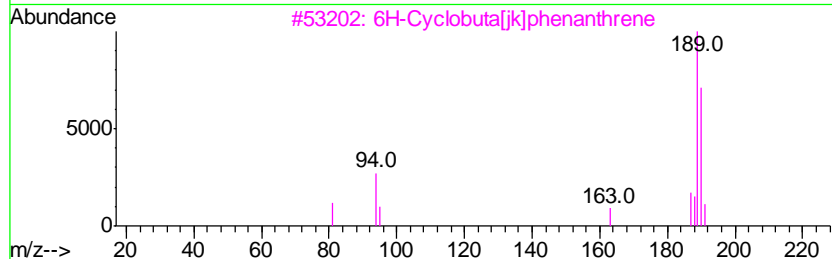
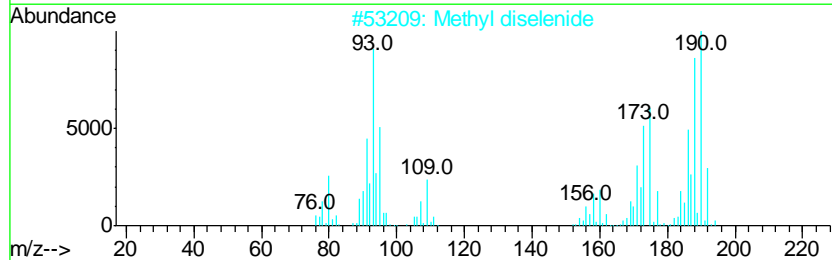
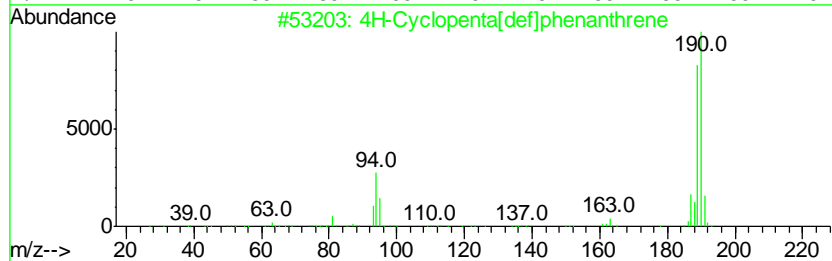
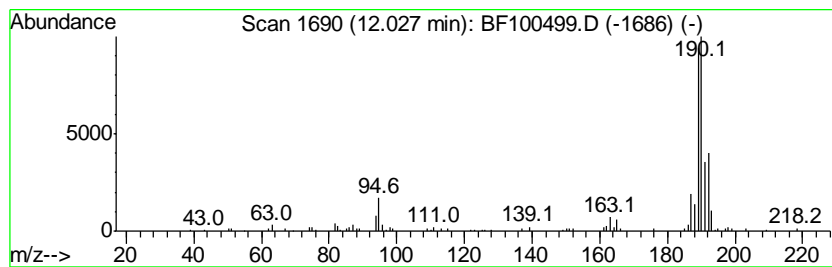
Quant Method : Z:\HPCHEM1\BNA F\METHODS\8270-BF110817.M
 Quant Title : ASP BNA STANDARDS FOR 5 POINT CALIBRATION

TIC Library : C:\DATABASE\NIST11.L
 TIC Integration Parameters: LSCINT.P

 Peak Number 6 4H-Cyclopenta[def]phenanthrene Concentration Rank 2

R.T.	EstConc	Area	Relative to ISTD	R.T.
12.03	6.47 ng	190264	Phenanthrene-d10	11.41

Hit#	of	Tentative ID	MW	MolForm	CAS#	Qual
1	5	4H-Cyclopenta[def]phenanthrene	190	C15H10	000203-64-5	81
2		Methyl diselenide	190	C2H6Se2	007101-31-7	45
3		6H-Cyclobuta[ik]phenanthrene	190	C15H10	083469-43-6	42
4		2,2'-Bis(4,5-dimethylimidazole)	190	C10H14N4	069286-06-2	40
5		2,6-Dichlorobenzaldoxime	189	C7H5Cl2NO	025185-95-9	38



Data Path : \\74.0.250.170\SVOASRV\HPCHEM1\BNA F\DATA\BF111317\
 Data File : BF100499.D
 Acq On : 13 Nov 2017 13:41
 Operator : SJ/JU
 Sample : I6396-05 20X
 Misc :
 ALS Vial : 4 Sample Multiplier: 1

Instrument :
 BNA_F
 ClientSampled :
 LS-SOIL

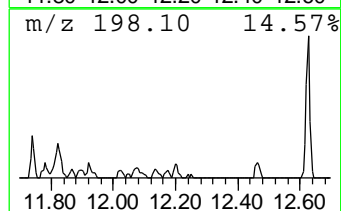
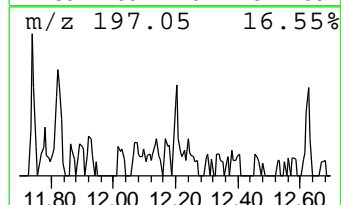
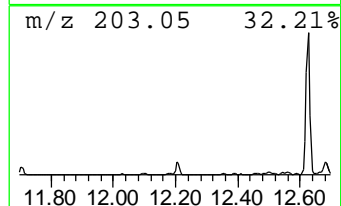
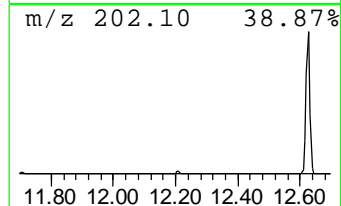
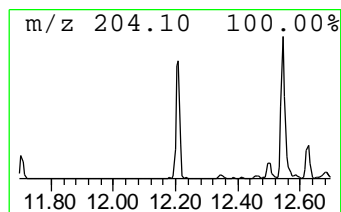
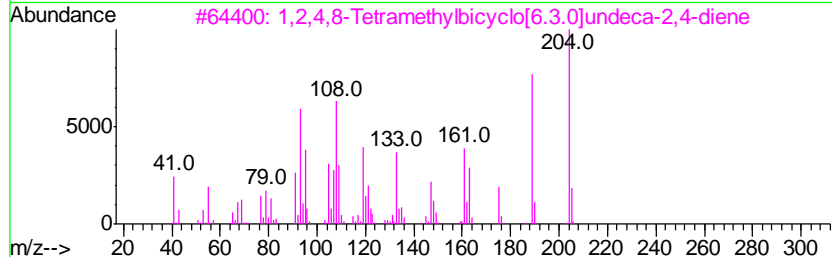
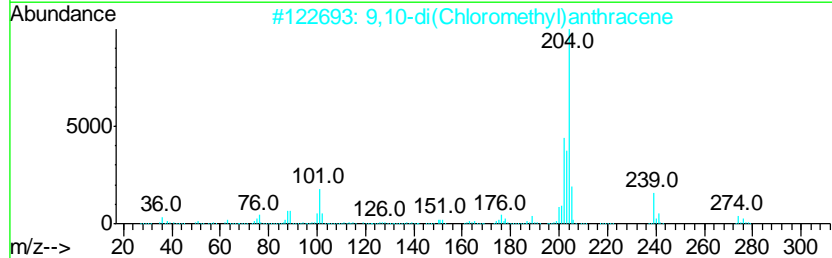
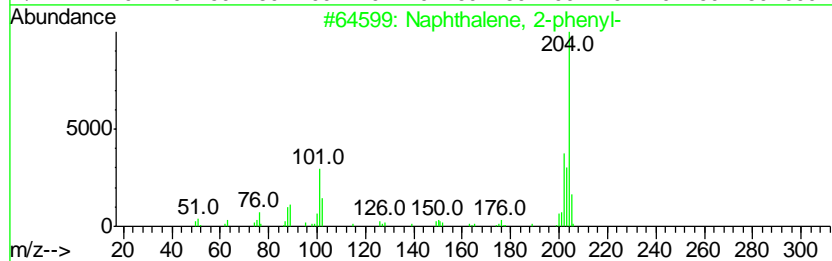
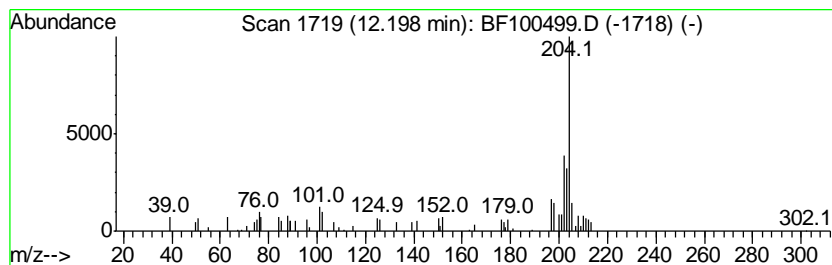
Quant Method : Z:\HPCHEM1\BNA F\METHODS\8270-BF110817.M
 Quant Title : ASP BNA STANDARDS FOR 5 POINT CALIBRATION

TIC Library : C:\DATABASE\NIST11.L
 TIC Integration Parameters: LSCINT.P

 Peak Number 7 Naphthalene, 2-phenyl- Concentration Rank 14

R.T.	EstConc	Area	Relative to ISTD	R.T.
12.20	2.80 ng	82498	Phenanthrene-d10	11.41

Hit#	of	Tentative ID	MW	MolForm	CAS#	Qual
1	5	Naphthalene, 2-phenyl-	204	C16H12	000612-94-2	93
2		9,10-di(Chloromethyl)anthracene	274	C16H12Cl2	010387-13-0	91
3		1,2,4,8-Tetramethylbicyclo[6.3.0...]	204	C15H24	137235-51-9	86
4		5,16[1',2']:8,13[1',2']-Dibenz...	408	C32H24	005672-97-9	86
5		Tricyclo[8.2.2.2(4,7)]hexadeca-2...	204	C16H12	006572-60-7	70



Data Path : \\74.0.250.170\SVOASRV\HPCHEM1\BNA F\DATA\BF111317\
 Data File : BF100499.D
 Acq On : 13 Nov 2017 13:41
 Operator : SJ/JU
 Sample : I6396-05 20X
 Misc :
 ALS Vial : 4 Sample Multiplier: 1

Instrument :
 BNA_F
 ClientSampled :
 LS-SOIL

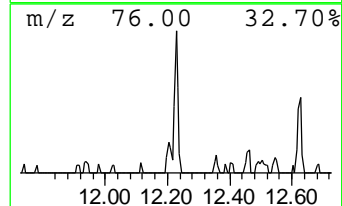
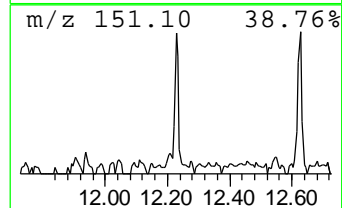
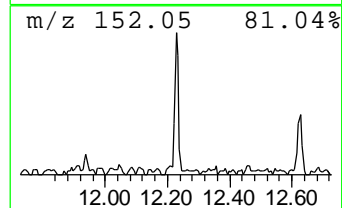
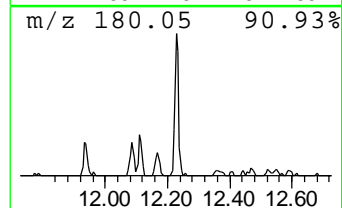
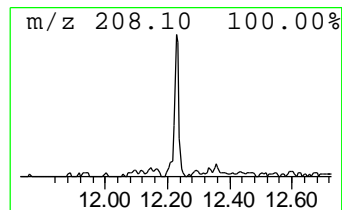
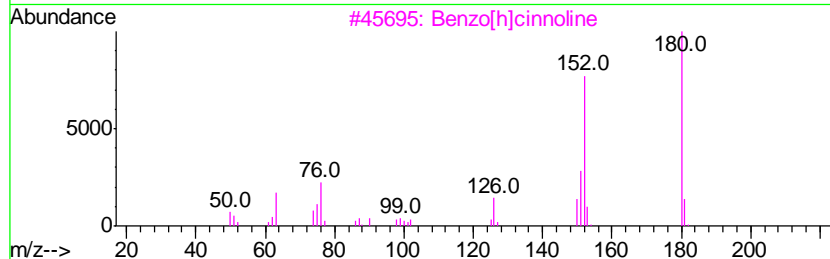
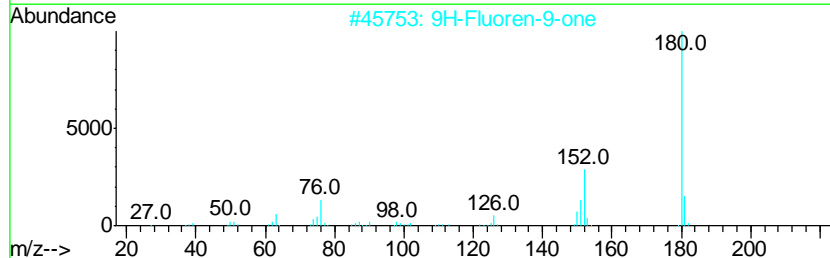
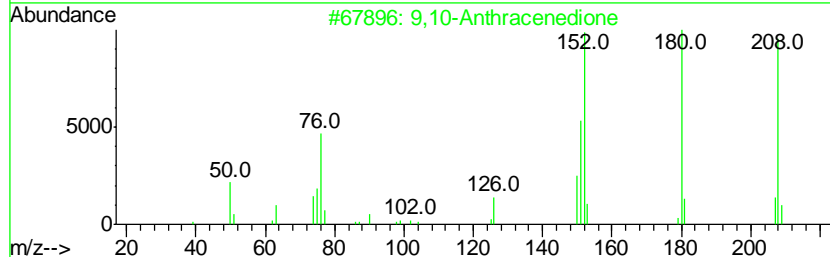
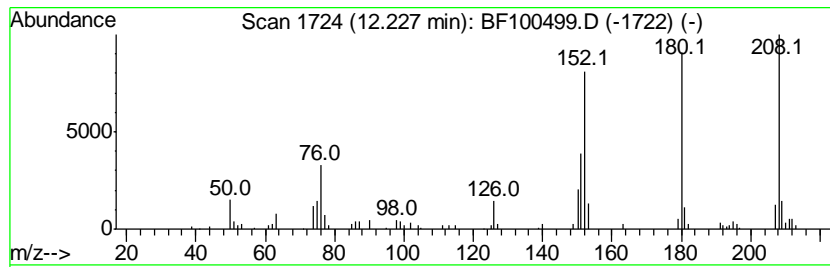
Quant Method : Z:\HPCHEM1\BNA F\METHODS\8270-BF110817.M
 Quant Title : ASP BNA STANDARDS FOR 5 POINT CALIBRATION

TIC Library : C:\DATABASE\NIST11.L
 TIC Integration Parameters: LSCINT.P

 Peak Number 8 9,10-Anthracenedione Concentration Rank 12

R.T.	EstConc	Area	Relative to ISTD	R.T.
12.23	2.90 ng	85394	Phenanthrene-d10	11.41

Hit#	of	Tentative ID	MW	MolForm	CAS#	Qual
1	5	9,10-Anthracenedione	208	C14H8O2	000084-65-1	97
2		9H-Fluoren-9-one	180	C13H8O	000486-25-9	91
3		Benzo[h]cinnoline	180	C12H8N2	000230-31-9	64
4		Benzo[c]cinnoline	180	C12H8N2	000230-17-1	64
5		1H-Phenalen-1-one	180	C13H8O	000548-39-0	60



Data Path : \\74.0.250.170\SVOASRV\HPCHEM1\BNA F\DATA\BF111317\
 Data File : BF100499.D
 Acq On : 13 Nov 2017 13:41
 Operator : SJ/JU
 Sample : I6396-05 20X
 Misc :
 ALS Vial : 4 Sample Multiplier: 1

Instrument :
 BNA_F
 ClientSampleID :
 LS-SOIL

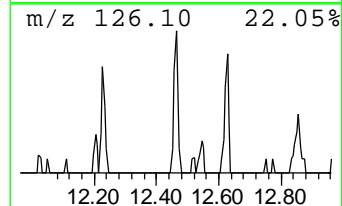
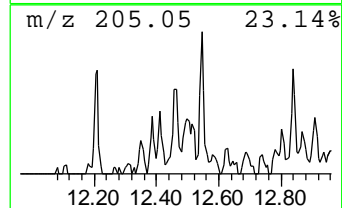
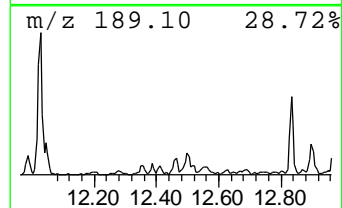
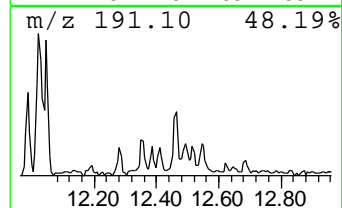
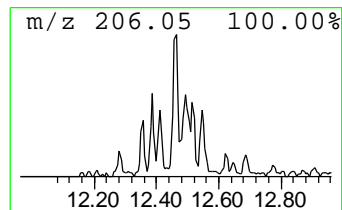
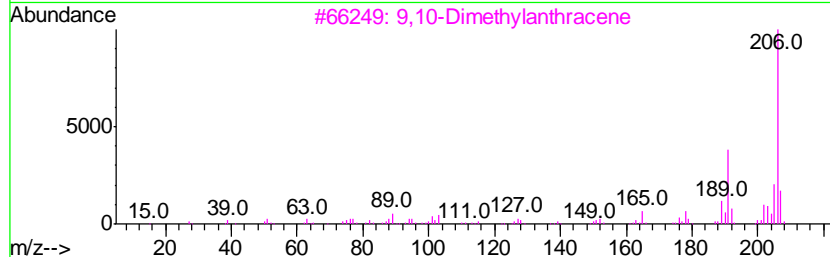
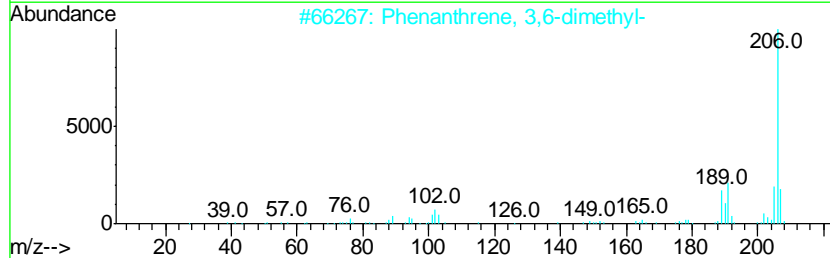
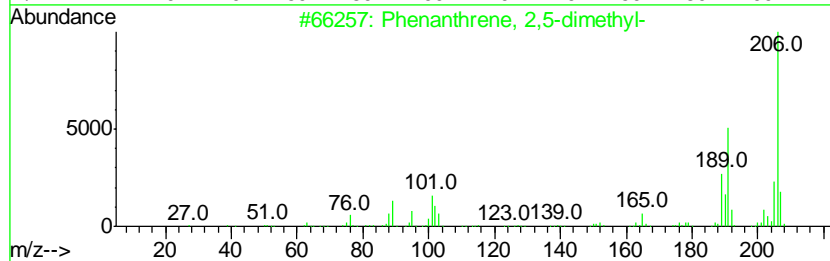
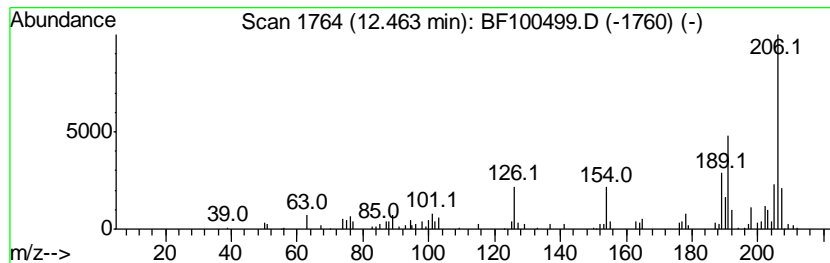
Quant Method : Z:\HPCHEM1\BNA F\METHODS\8270-BF110817.M
 Quant Title : ASP BNA STANDARDS FOR 5 POINT CALIBRATION

TIC Library : C:\DATABASE\NIST11.L
 TIC Integration Parameters: LSCINT.P

 Peak Number 9 Phenanthrene, 2,5-dimethyl- Concentration Rank 13

R.T.	EstConc	Area	Relative to ISTD	R.T.
12.46	2.83 ng	83410	Phenanthrene-d10	11.41

Hit#	of	Tentative ID	MW	MolForm	CAS#	Qual
1	5	Phenanthrene, 2,5-dimethyl-	206	C16H14	003674-66-6	90
2		Phenanthrene, 3,6-dimethyl-	206	C16H14	001576-67-6	89
3		9,10-Dimethylanthracene	206	C16H14	000781-43-1	89
4		Phenanthrene, 1,7-dimethyl-	206	C16H14	000483-87-4	86
5		di-p-Tolylacetylene	206	C16H14	002789-88-0	76



Data Path : \\74.0.250.170\SVOASRV\HPCHEM1\BNA F\DATA\BF111317\
 Data File : BF100499.D
 Acq On : 13 Nov 2017 13:41
 Operator : SJ/JU
 Sample : I6396-05 20X
 Misc :
 ALS Vial : 4 Sample Multiplier: 1

Instrument :
 BNA_F
 ClientSampled :
 LS-SOIL

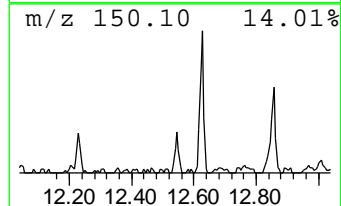
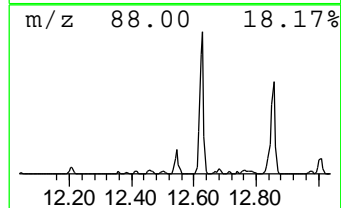
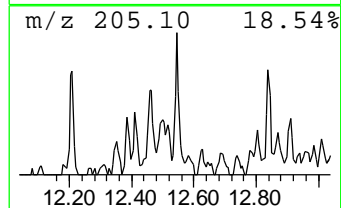
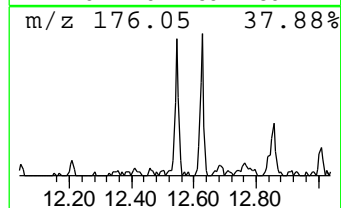
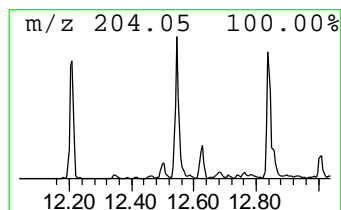
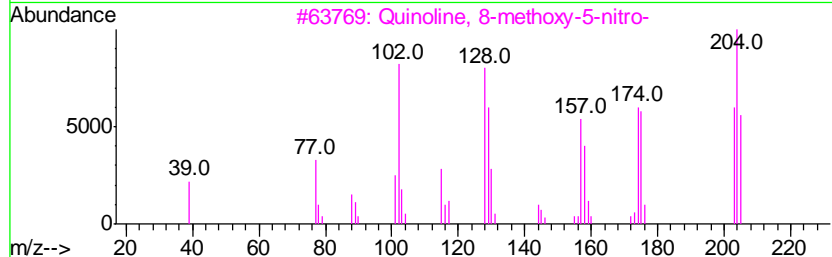
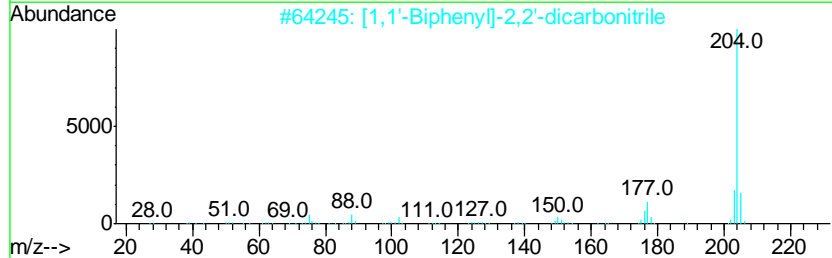
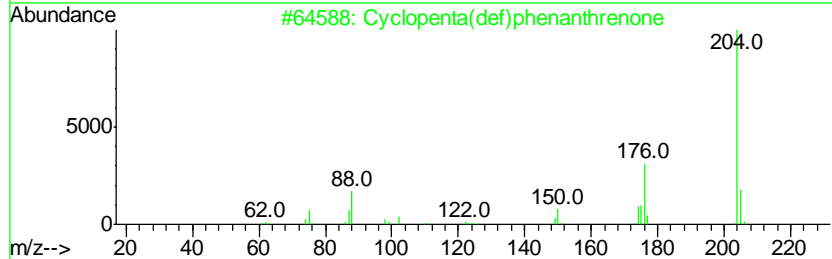
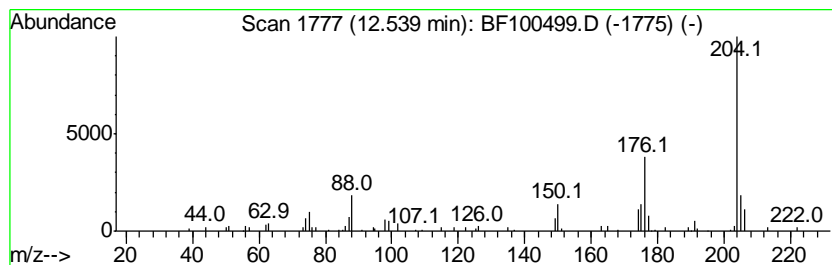
Quant Method : Z:\HPCHEM1\BNA F\METHODS\8270-BF110817.M
 Quant Title : ASP BNA STANDARDS FOR 5 POINT CALIBRATION

TIC Library : C:\DATABASE\NIST11.L
 TIC Integration Parameters: LSCINT.P

 Peak Number 10 Cyclopenta(def)phenanthrenone Concentration Rank 7

R.T.	EstConc	Area	Relative to ISTD	R.T.
12.54	3.66 ng	107758	Phenanthrene-d10	11.41

Hit#	of	Tentative ID	MW	MolForm	CAS#	Qual
1	5	Cyclopenta(def)phenanthrenone	204	C15H8O	005737-13-3	95
2		[1,1'-Biphenyl]-2,2'-dicarbonitrile	204	C14H8N2	004341-02-0	52
3		Quinoline, 8-methoxy-5-nitro-	204	C10H8N2O3	1000298-88-7	49
4		Acephenanthrylene, 4,5-dihydro-	204	C16H12	006232-48-0	47
5		Naphthalene, 2-phenyl-	204	C16H12	000612-94-2	47



Data Path : \\74.0.250.170\SVOASRV\HPCHEM1\BNA F\DATA\BF111317\
 Data File : BF100499.D
 Acq On : 13 Nov 2017 13:41
 Operator : SJ/JU
 Sample : I6396-05 20X
 Misc :
 ALS Vial : 4 Sample Multiplier: 1

Instrument :
 BNA_F
 ClientSampleId :
 LS-SOIL

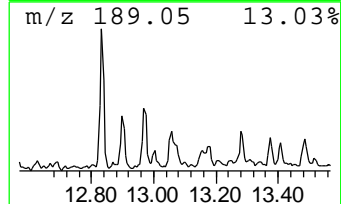
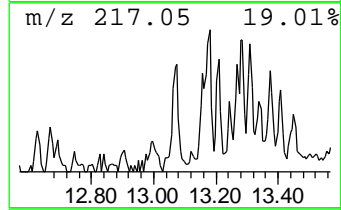
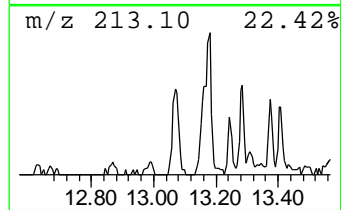
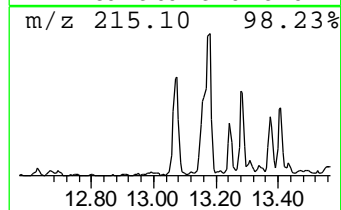
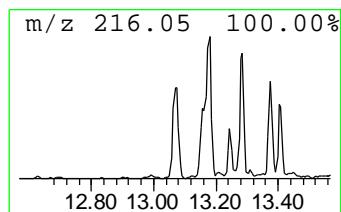
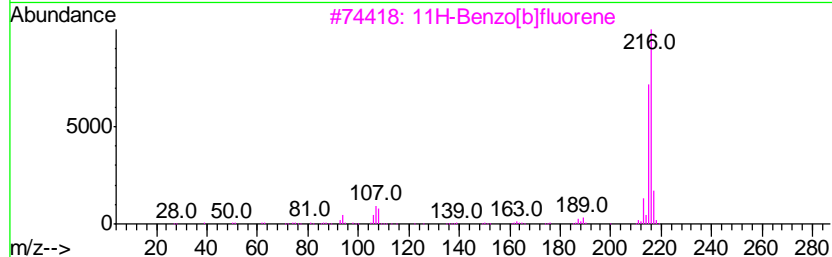
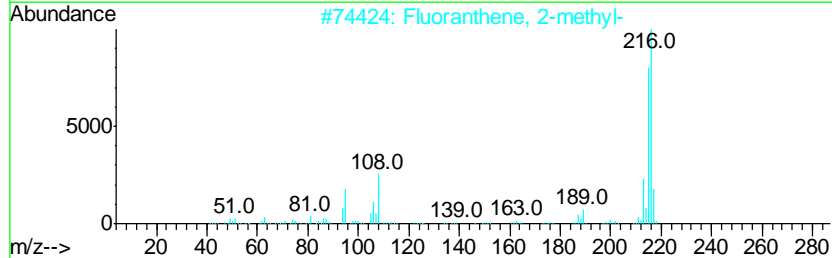
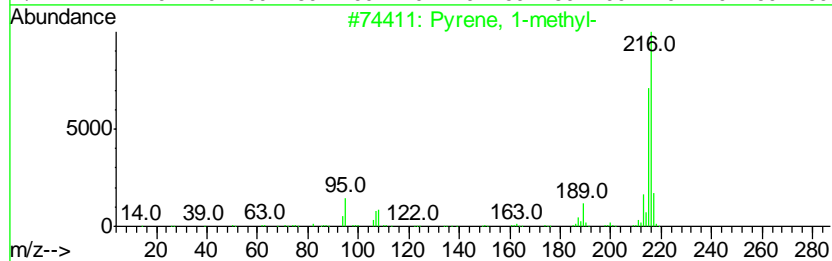
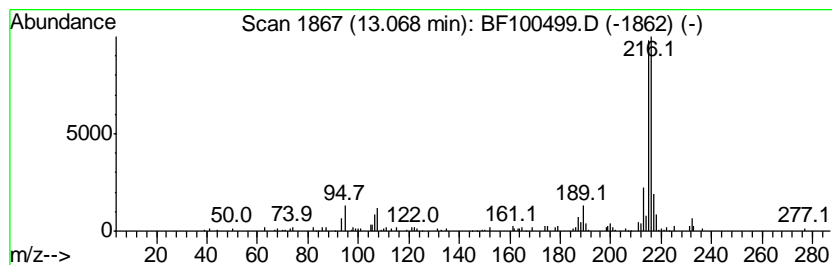
Quant Method : Z:\HPCHEM1\BNA F\METHODS\8270-BF110817.M
 Quant Title : ASP BNA STANDARDS FOR 5 POINT CALIBRATION

TIC Library : C:\DATABASE\NIST11.L
 TIC Integration Parameters: LSCINT.P

 Peak Number 11 Pyrene, 1-methyl- Concentration Rank 15

R.T.	EstConc	Area	Relative to ISTD	R.T.
13.07	2.55 ng	160575	Chrysene-d12	14.05

Hit#	of	Tentative ID	MW	MolForm	CAS#	Qual
1	5	Pyrene, 1-methyl-	216	C17H12	002381-21-7	93
2		Fluoranthene, 2-methyl-	216	C17H12	033543-31-6	91
3		11H-Benzo[b]fluorene	216	C17H12	000243-17-4	91
4		Pyrene, 2-methyl-	216	C17H12	003442-78-2	89
5		11H-Benzo[a]fluorene	216	C17H12	000238-84-6	87



Data Path : \\74.0.250.170\SVOASRV\HPCHEM1\BNA F\DATA\BF111317\
 Data File : BF100499.D
 Acq On : 13 Nov 2017 13:41
 Operator : SJ/JU
 Sample : I6396-05 20X
 Misc :
 ALS Vial : 4 Sample Multiplier: 1

Instrument :
 BNA_F
 ClientSampled :
 LS-SOIL

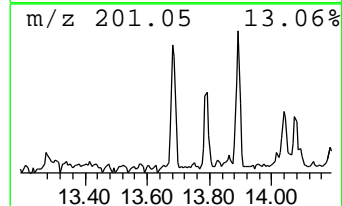
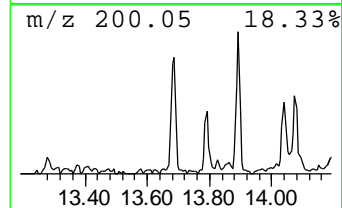
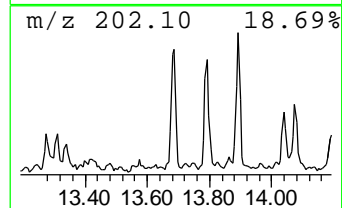
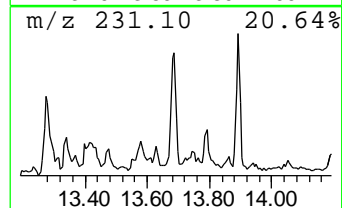
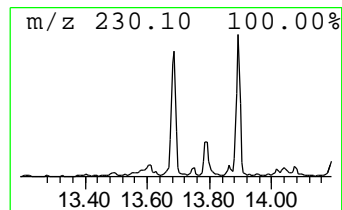
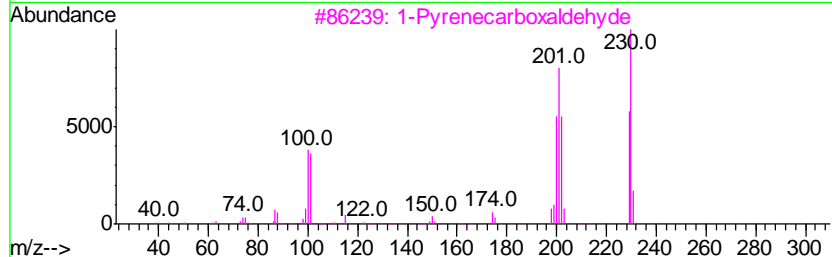
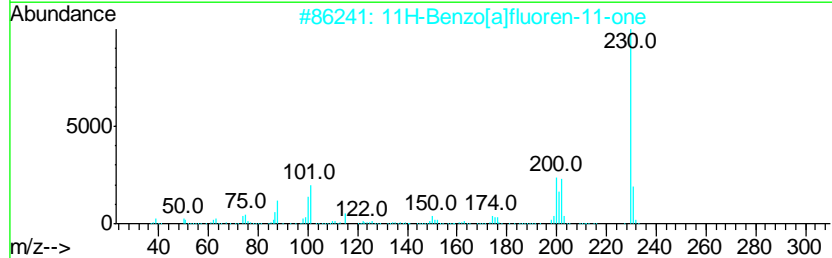
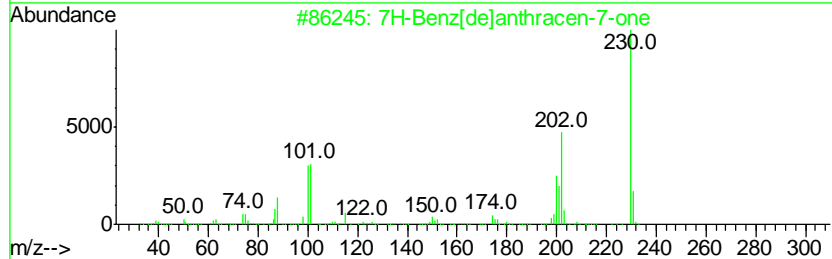
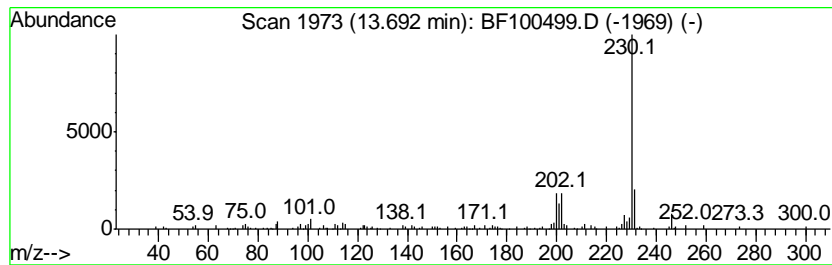
Quant Method : Z:\HPCHEM1\BNA F\METHODS\8270-BF110817.M
 Quant Title : ASP BNA STANDARDS FOR 5 POINT CALIBRATION

TIC Library : C:\DATABASE\NIST11.L
 TIC Integration Parameters: LSCINT.P

 Peak Number 13 7H-Benz[de]anthracen-7-one Concentration Rank 11

R.T.	EstConc	Area	Relative to ISTD	R.T.
13.69	2.92 ng	183816	Chrysene-d12	14.05

Hit#	of	Tentative ID	MW	MolForm	CAS#	Qual
1	5	7H-Benz[de]anthracen-7-one	230	C17H10O	000082-05-3	94
2		11H-Benzo[a]fluoren-11-one	230	C17H10O	000479-79-8	80
3		1-Pyrenecarboxaldehyde	230	C17H10O	003029-19-4	72
4		Cycloisolonqifolene, 8,9-dehydro...	230	C16H22O	059820-24-5	43
5		p-Terphenyl	230	C18H14	000092-94-4	40



Data Path : \\74.0.250.170\SVOASRV\HPCHEM1\BNA F\DATA\BF111317\
 Data File : BF100499.D
 Acq On : 13 Nov 2017 13:41
 Operator : SJ/JU
 Sample : I6396-05 20X
 Misc :
 ALS Vial : 4 Sample Multiplier: 1

Instrument :
 BNA_F
 ClientSampled :
 LS-SOIL

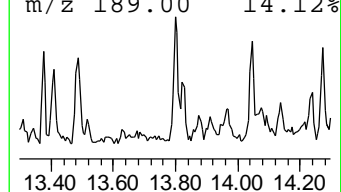
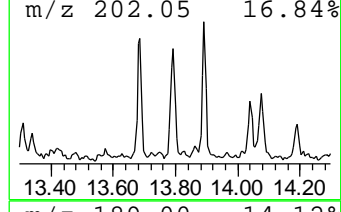
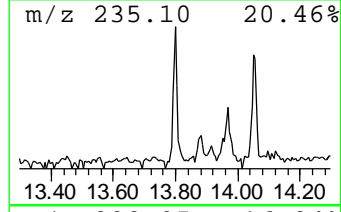
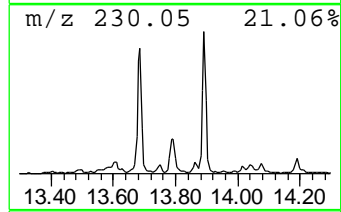
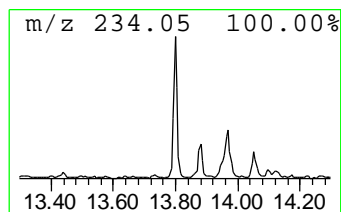
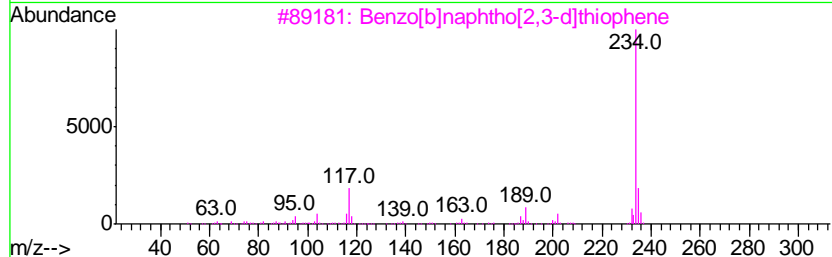
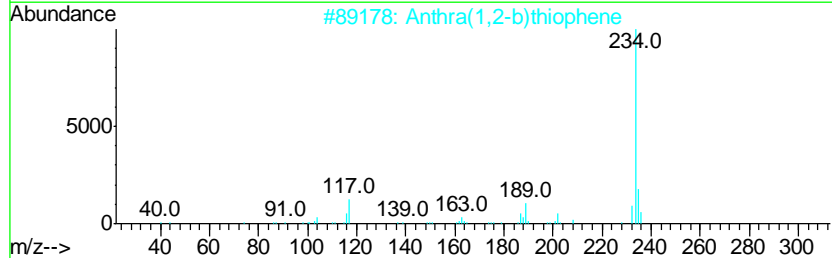
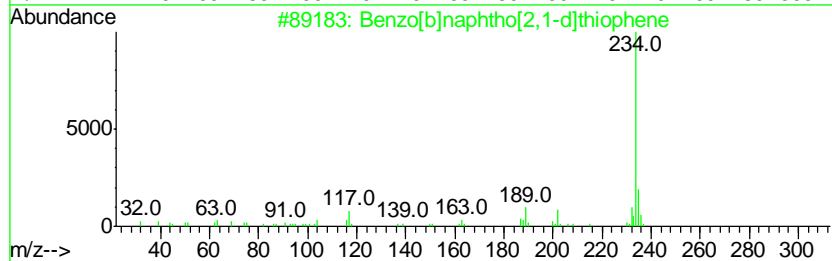
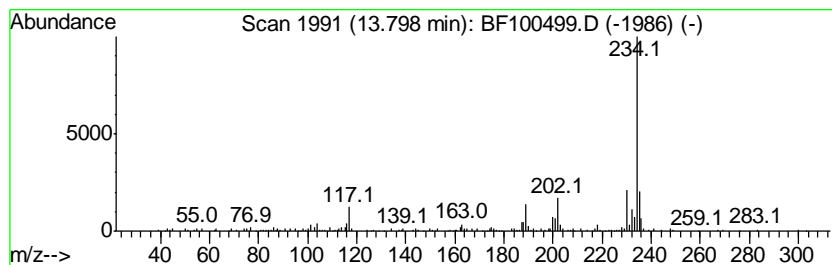
Quant Method : Z:\HPCHEM1\BNA F\METHODS\8270-BF110817.M
 Quant Title : ASP BNA STANDARDS FOR 5 POINT CALIBRATION

TIC Library : C:\DATABASE\NIST11.L
 TIC Integration Parameters: LSCINT.P

 Peak Number 14 Benzo[b]naphtho[2,1-d]thiop... Concentration Rank 9

R.T.	EstConc	Area	Relative to ISTD	R.T.
13.80	3.31 ng	207915	Chrysene-d12	14.05

Hit#	of	Tentative ID	MW	MolForm	CAS#	Qual
1	5	Benzo[b]naphtho[2,1-d]thiophene	234	C16H10S	000239-35-0	93
2		Anthra(1,2-b)thiophene	234	C16H10S	000227-86-1	90
3		Benzo[b]naphtho[2,3-d]thiophene	234	C16H10S	000243-46-9	87
4		Benzo[b]naphtho[1,2-d]thiophene	234	C16H10S	000205-43-6	81
5		Anthra(2,3-b)thiophene	234	C16H10S	022108-55-0	72



Data Path : \\74.0.250.170\SVOASRV\HPCHEM1\BNA F\DATA\BF111317\
 Data File : BF100499.D
 Acq On : 13 Nov 2017 13:41
 Operator : SJ/JU
 Sample : I6396-05 20X
 Misc :
 ALS Vial : 4 Sample Multiplier: 1

Instrument :
 BNA_F
 ClientSampled :
 LS-SOIL

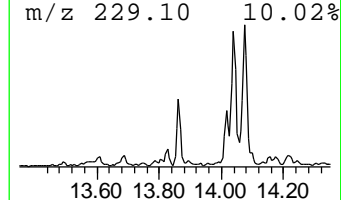
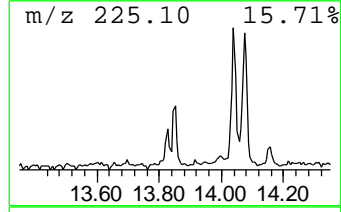
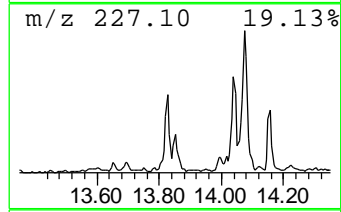
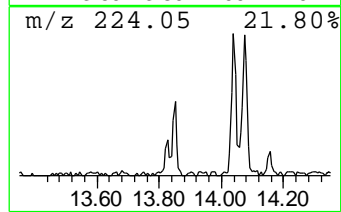
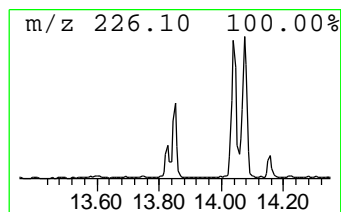
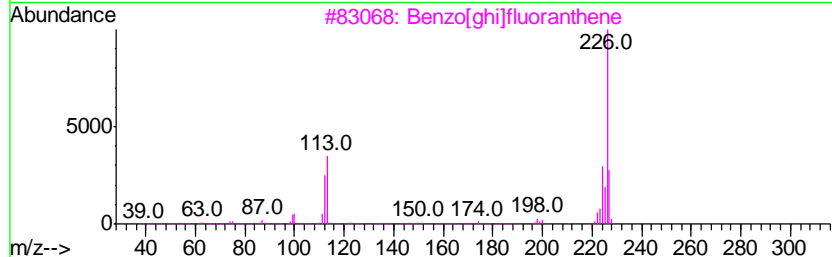
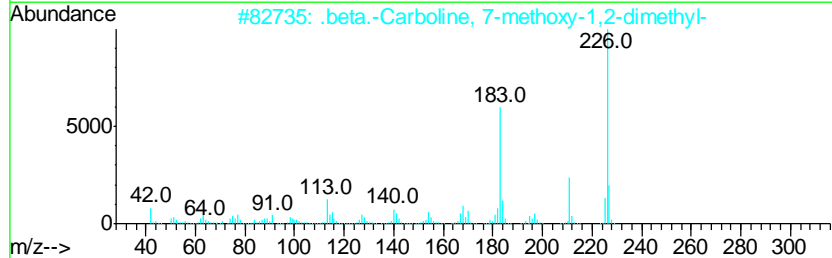
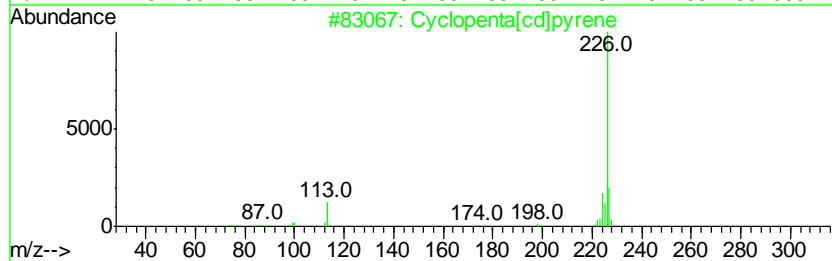
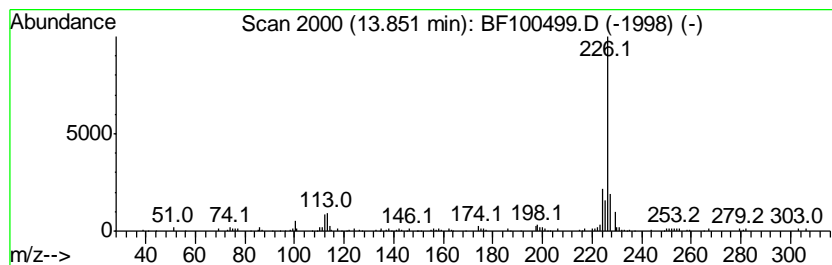
Quant Method : Z:\HPCHEM1\BNA F\METHODS\8270-BF110817.M
 Quant Title : ASP BNA STANDARDS FOR 5 POINT CALIBRATION

TIC Library : C:\DATABASE\NIST11.L
 TIC Integration Parameters: LSCINT.P

 Peak Number 15 Cyclopenta[cd]pyrene Concentration Rank 18

R.T.	EstConc	Area	Relative to ISTD	R.T.
13.85	2.16 ng	135703	Chrysene-d12	14.05

Hit#	of	Tentative ID	MW	MolForm	CAS#	Qual
1	5	Cyclopenta[cd]pyrene	226	C18H10	027208-37-3	64
2		.beta.-Carboline, 7-methoxy-1,2-...	226	C14H14N2O	006519-18-2	59
3		Benzo[ghi]fluoranthene	226	C18H10	000203-12-3	52
4		p-Anisaldehyde phenylhydrazone	226	C14H14N2O	000622-73-1	52
5		9H-Thioxanthen-9-one, 2-methyl-	226	C14H10OS	015774-82-0	42



Data Path : \\74.0.250.170\SVOASRV\HPCHEM1\BNA F\DATA\BF111317\
 Data File : BF100499.D
 Acq On : 13 Nov 2017 13:41
 Operator : SJ/JU
 Sample : I6396-05 20X
 Misc :
 ALS Vial : 4 Sample Multiplier: 1

Instrument :
 BNA_F
 ClientSampled :
 LS-SOIL

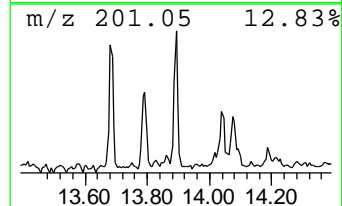
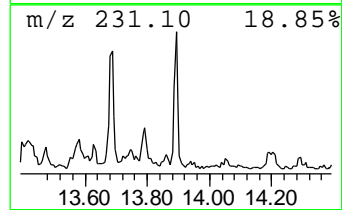
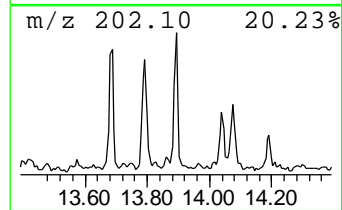
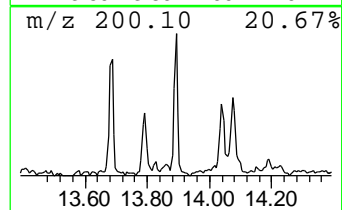
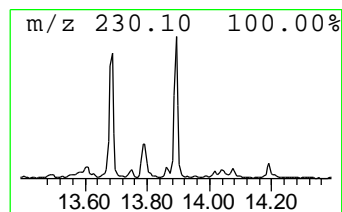
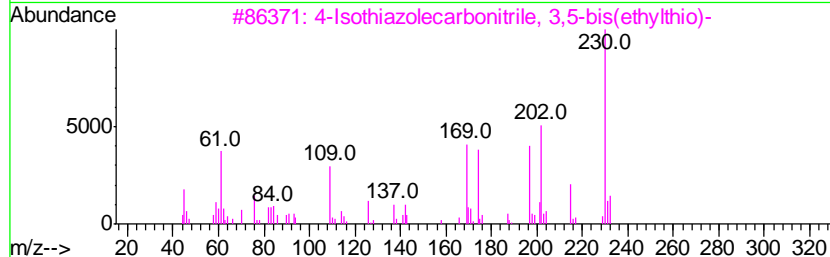
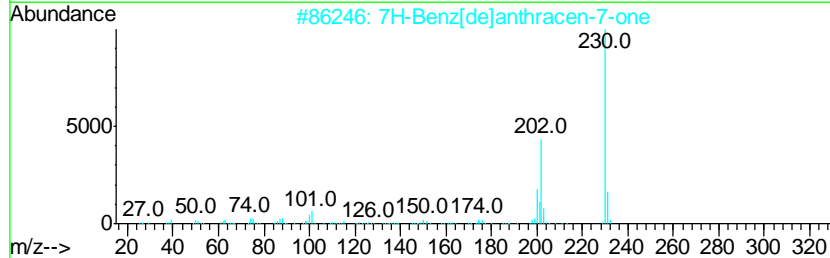
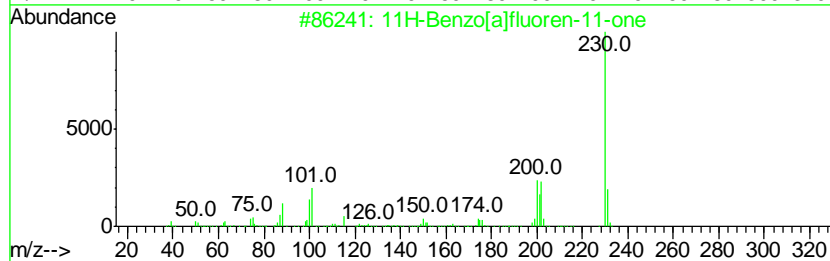
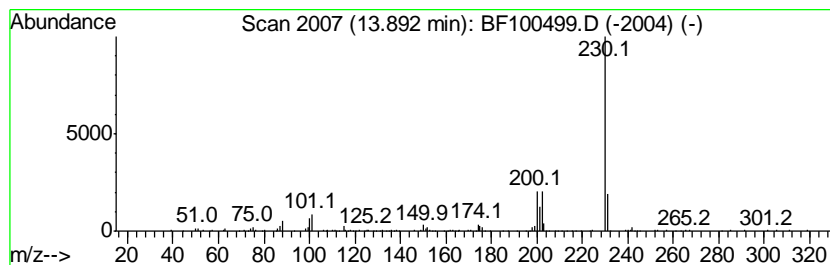
Quant Method : Z:\HPCHEM1\BNA F\METHODS\8270-BF110817.M
 Quant Title : ASP BNA STANDARDS FOR 5 POINT CALIBRATION

TIC Library : C:\DATABASE\NIST11.L
 TIC Integration Parameters: LSCINT.P

 Peak Number 16 11H-Benzo[a]fluoren-11-one Concentration Rank 10

R.T.	EstConc	Area	Relative to ISTD	R.T.
13.89	3.04 ng	191365	Chrysene-d12	14.05

Hit#	of	Tentative ID	MW	MolForm	CAS#	Qual
1	5	11H-Benzo[a]fluoren-11-one	230	C17H10O	000479-79-8	94
2		7H-Benz[de]anthracen-7-one	230	C17H10O	000082-05-3	90
3		4-Isothiazolecarbonitrile, 3,5-b...	230	C8H10N2S3	024135-13-5	59
4		o-Terphenyl	230	C18H14	000084-15-1	53
5		Pyrene, 1,3-dimethyl-	230	C18H14	064401-21-4	50



Data Path : \\74.0.250.170\SVOASRV\HPCHEM1\BNA F\DATA\BF111317\
 Data File : BF100499.D
 Acq On : 13 Nov 2017 13:41
 Operator : SJ/JU
 Sample : I6396-05 20X
 Misc :
 ALS Vial : 4 Sample Multiplier: 1

Instrument :
 BNA_F
 ClientSampleId :
 LS-SOIL

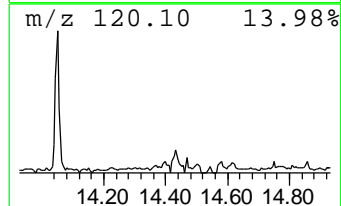
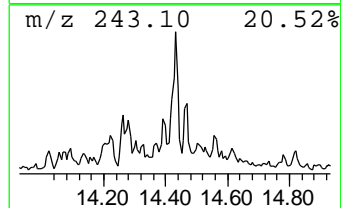
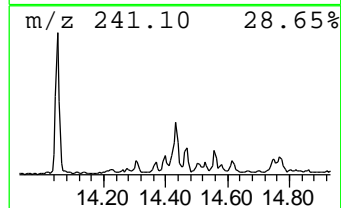
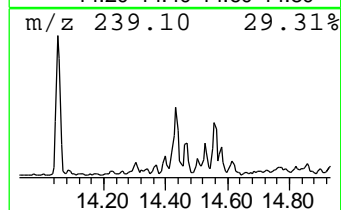
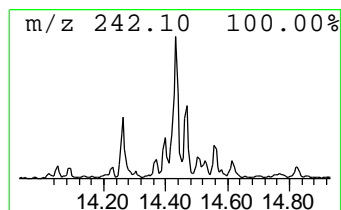
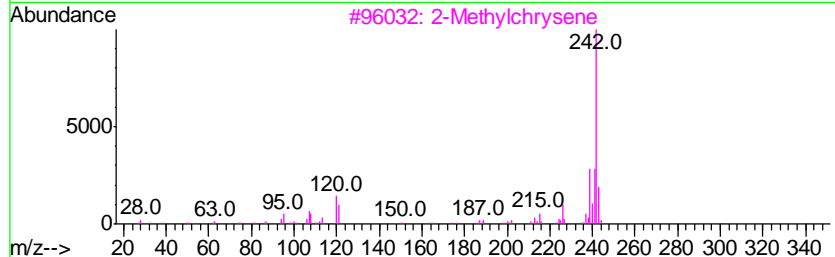
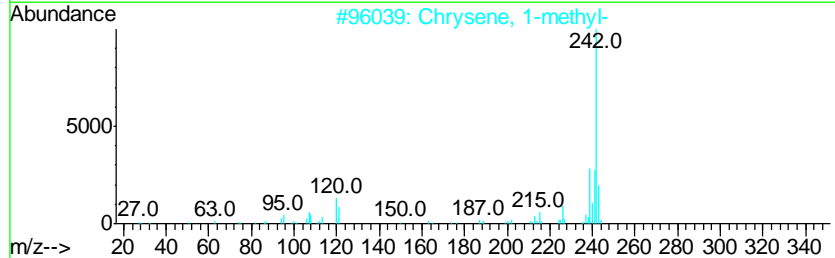
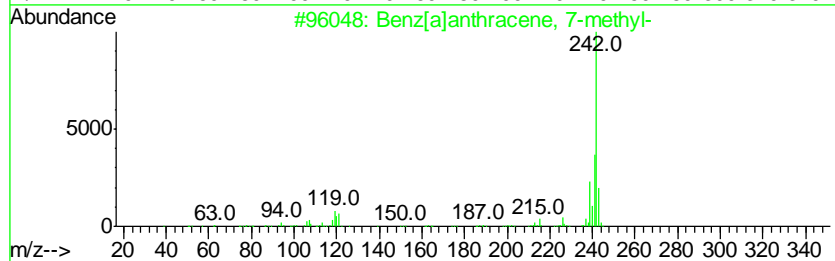
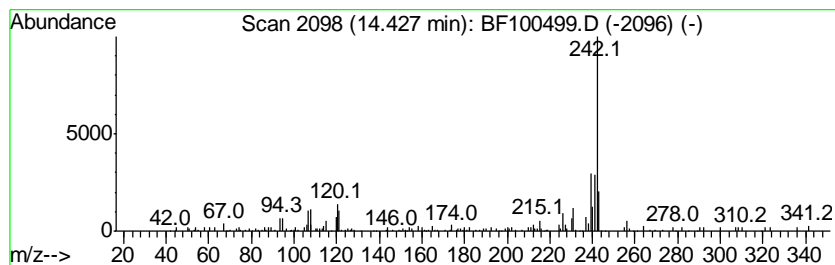
Quant Method : Z:\HPCHEM1\BNA F\METHODS\8270-BF110817.M
 Quant Title : ASP BNA STANDARDS FOR 5 POINT CALIBRATION

TIC Library : C:\DATABASE\NIST11.L
 TIC Integration Parameters: LSCINT.P

 Peak Number 17 Benz[a]anthracene, 7-methyl- Concentration Rank 19

R.T.	EstConc	Area	Relative to ISTD	R.T.
14.43	2.04 ng	128187	Chrysene-d12	14.05

Hit#	of	Tentative ID	MW	MolForm	CAS#	Qual
1	5	Benz[a]anthracene, 7-methyl-	242	C19H14	002541-69-7	94
2		Chrysene, 1-methyl-	242	C19H14	003351-28-8	93
3		2-Methylchrysene	242	C19H14	003351-32-4	93
4		Triphenylene, 2-methyl-	242	C19H14	001705-84-6	90
5		Benz[a]anthracene, 8-methyl-	242	C19H14	002381-31-9	89



Data Path : \\74.0.250.170\SVOASRV\HPCHEM1\BNA F\DATA\BF111317\
 Data File : BF100499.D
 Acq On : 13 Nov 2017 13:41
 Operator : SJ/JU
 Sample : I6396-05 20X
 Misc :
 ALS Vial : 4 Sample Multiplier: 1

Instrument :
 BNA_F
 ClientSampled :
 LS-SOIL

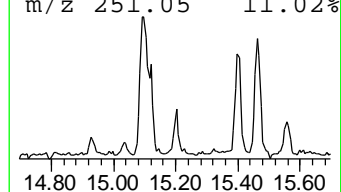
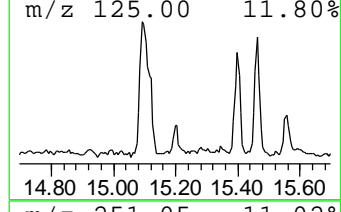
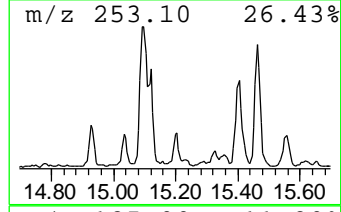
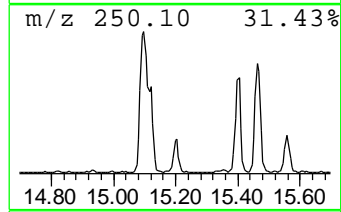
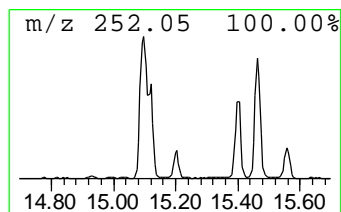
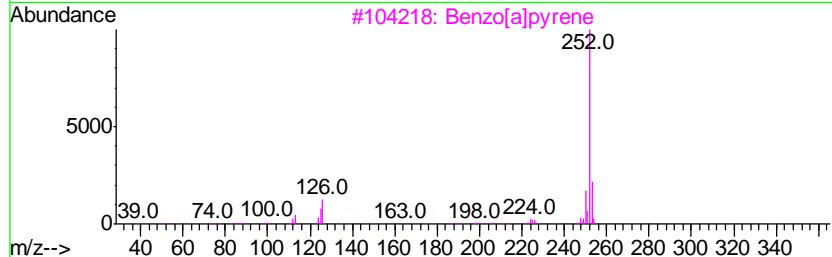
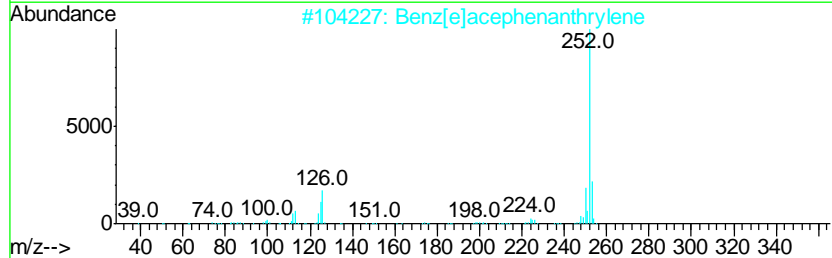
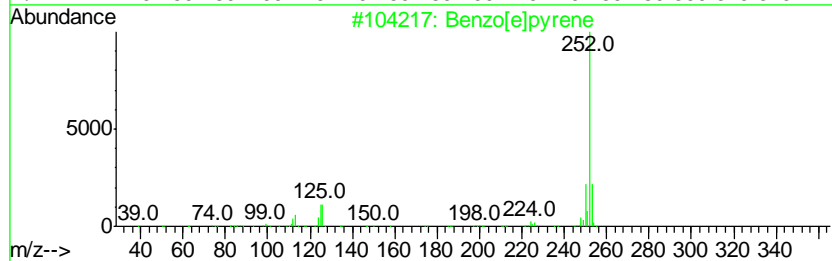
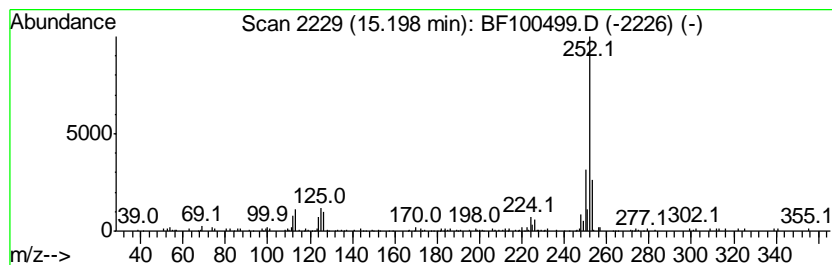
Quant Method : Z:\HPCHEM1\BNA F\METHODS\8270-BF110817.M
 Quant Title : ASP BNA STANDARDS FOR 5 POINT CALIBRATION

TIC Library : C:\DATABASE\NIST11.L
 TIC Integration Parameters: LSCINT.P

 Peak Number 18 Benzo[e]pyrene Concentration Rank 8

R.T.	EstConc	Area	Relative to ISTD	R.T.
15.20	3.51 ng	88479	Perylene-d12	15.53

Hit#	of	Tentative ID	MW	MolForm	CAS#	Qual
1	5	Benzo[e]pyrene	252	C20H12	000192-97-2	93
2		Benz[e]acephenanthrylene	252	C20H12	000205-99-2	93
3		Benzo[a]pyrene	252	C20H12	000050-32-8	81
4		Perylene	252	C20H12	000198-55-0	81
5		Benzo[k]fluoranthene	252	C20H12	000207-08-9	76



Data Path : \\74.0.250.170\SVOASRV\HPCHEM1\BNA_F\DATA\BF111317\
 Data File : BF100499.D
 Acq On : 13 Nov 2017 13:41
 Operator : SJ/JU
 Sample : I6396-05 20X
 Misc :
 ALS Vial : 4 Sample Multiplier: 1

Instrument :
 BNA_F
 ClientSampleId :
 LS-SOIL

Quant Method : Z:\HPCHEM1\BNA_F\METHODS\8270-BF110817.M
 Quant Title : ASP BNA STANDARDS FOR 5 POINT CALIBRATION

TIC Library : C:\DATABASE\NIST11.L
 TIC Integration Parameters: LSCINT.P

TIC Top Hit name	RT	EstConc	Units	Response	--Internal Standard--			
					#	RT	Resp	Conc
unknown6.65	6.65	5.2 ng		125375	1	6.89	480932	20.0
9H-Fluoren-9-one	11.22	2.4 ng		70168	4	11.41	588529	20.0
Anthracene, 2-met...	11.91	4.6 ng		134555	4	11.41	588529	20.0
Phenanthrene, 2-m...	11.94	5.0 ng		146951	4	11.41	588529	20.0
4H-Cyclopenta[def...	12.03	6.5 ng		190264	4	11.41	588529	20.0
Naphthalene, 2-ph...	12.20	2.8 ng		82498	4	11.41	588529	20.0
9,10-Anthracenedione	12.23	2.9 ng		85394	4	11.41	588529	20.0
Phenanthrene, 2,5...	12.46	2.8 ng		83410	4	11.41	588529	20.0
Cyclopenta(def)ph...	12.54	3.7 ng		107758	4	11.41	588529	20.0
Pyrene, 1-methyl-	13.07	2.5 ng		160575	5	14.05	1257380	20.0
7H-Benz[de]anthra...	13.69	2.9 ng		183816	5	14.05	1257380	20.0
Benzo[b]naphtho[2...	13.80	3.3 ng		207915	5	14.05	1257380	20.0
Cyclopenta[cd]pyrene	13.85	2.2 ng		135703	5	14.05	1257380	20.0
11H-Benzo[a]fluor...	13.89	3.0 ng		191365	5	14.05	1257380	20.0
Benz[a]anthracene...	14.43	2.0 ng		128187	5	14.05	1257380	20.0
Benzo[e]pyrene	15.20	3.5 ng		88479	6	15.53	504451	20.0