

Data Path : Z:\HPCHEM1\BNA F\DATA\BF111414\  
 Data File : BF075504.D  
 Acq On : 14 Nov 2014 20:05  
 Operator : TP / JJ  
 Sample : PB80327TB  
 Misc :  
 ALS Vial : 8 Sample Multiplier: 1

**Instrument :**  
 BNA\_F  
**ClientSampleId :**  
 PB80327TB

**Manual Integrations**  
**APPROVED**  
 mohammad  
 11/17/2014 7:34:19 PM

Quant Time: Nov 14 23:57:43 2014  
 Quant Method : Z:\HPCHEM1\BNA F\METHODS\8270-BF111214.M  
 Quant Title : ASP BNA STANDARDS FOR 5 POINT CALIBRATION  
 QLast Update : Wed Nov 12 18:46:55 2014  
 Response via : Initial Calibration

| Internal Standards                 | R.T.  | QIon | Response | Conc  | Units | Dev(Min) |
|------------------------------------|-------|------|----------|-------|-------|----------|
| 1) 1,4-Dichlorobenzene-d4          | 7.56  | 152  | 87015    | 20.00 | ng    | -0.02    |
| 21) Naphthalene-d8                 | 9.13  | 136  | 384496   | 20.00 | ng    | -0.02    |
| 38) Acenaphthene-d10               | 11.32 | 164  | 197689   | 20.00 | ng    | -0.02    |
| 63) Phenanthrene-d10               | 13.16 | 188  | 328593   | 20.00 | ng    | -0.03    |
| 75) Chrysene-d12                   | 16.46 | 240  | 363678   | 20.00 | ng    | -0.08    |
| 86) Perylene-d12                   | 18.21 | 264  | 378569   | 20.00 | ng    | -0.23    |
| <b>System Monitoring Compounds</b> |       |      |          |       |       |          |
| 5) 2-Fluorophenol                  | 5.84  | 112  | 388513   | 78.88 | ng    | -0.02    |
| 7) Phenol-d6                       | 7.09  | 99   | 466750   | 78.80 | ng    | -0.02    |
| 23) Nitrobenzene-d5                | 8.24  | 82   | 265658   | 50.66 | ng    | -0.02    |
| 41) 2,4,6-Tribromophenol           | 12.30 | 330  | 108244   | 65.37 | ng    | -0.02    |
| 44) 2-Fluorobiphenyl               | 10.47 | 172  | 504407   | 46.11 | ng    | -0.02    |
| 78) Terphenyl-d14                  | 15.16 | 244  | 558954   | 41.38 | ng    | -0.03    |

Target Compounds Qvalue

---

(#) = qualifier out of range (m) = manual integration (+) = signals summed

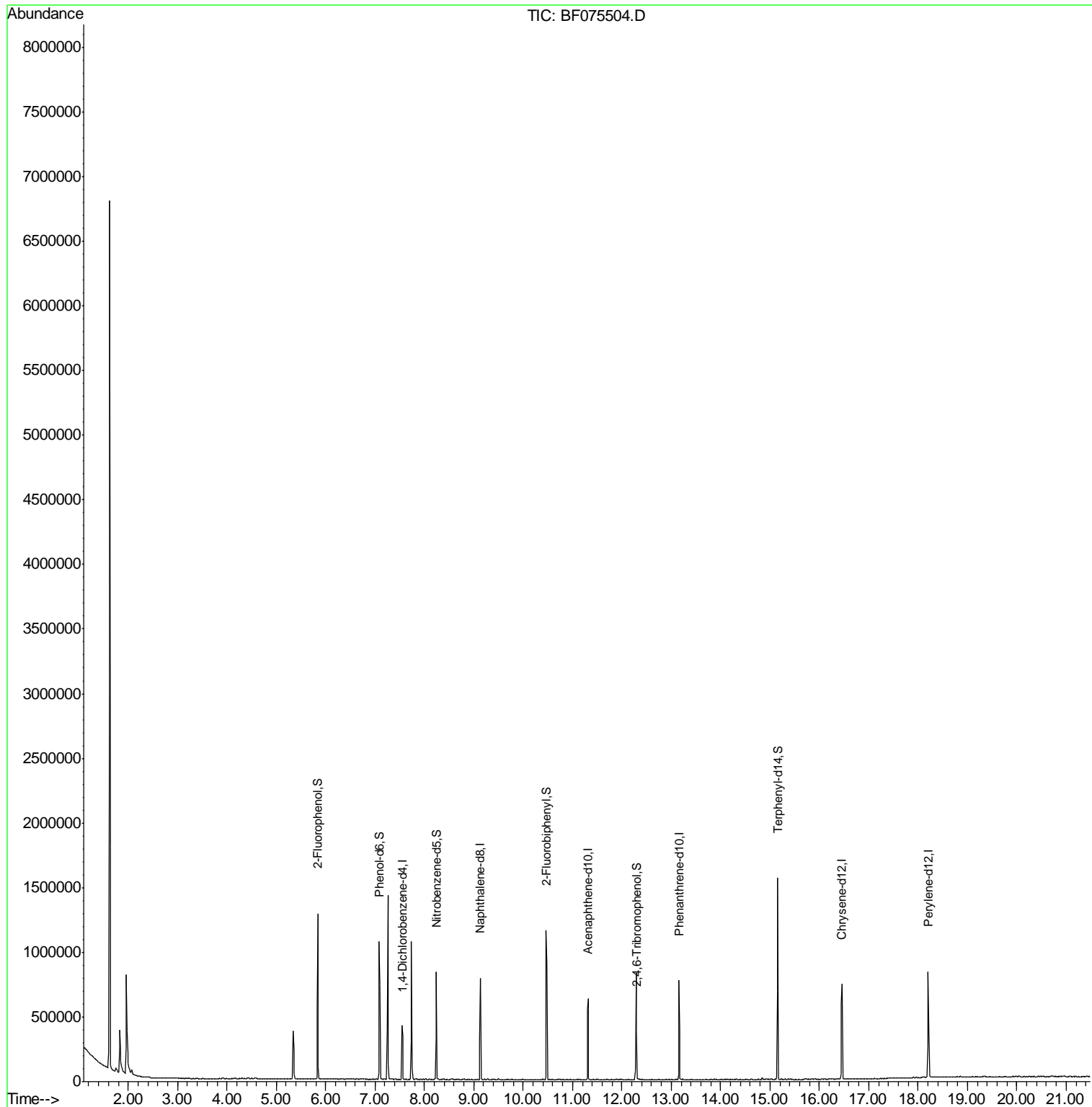
Data Path : Z:\HPCHEM1\BNA F\DATA\BF111414\  
 Data File : BF075504.D  
 Acq On : 14 Nov 2014 20:05  
 Operator : TP / JJ  
 Sample : PB80327TB  
 Misc :  
 ALS Vial : 8 Sample Multiplier: 1

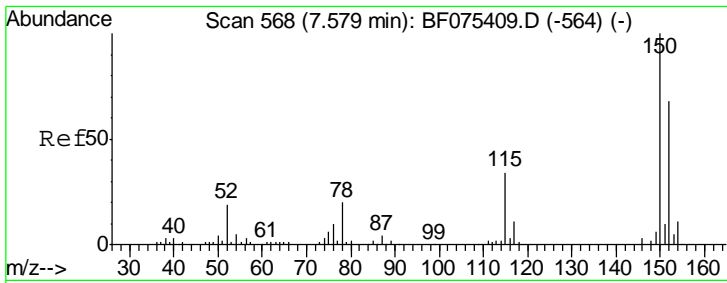
Instrument :  
 BNA\_F  
 ClientSampleId :  
 PB80327TB

Manual Integrations  
 APPROVED

mohammad  
 11/17/2014 7:34:19 PM

Quant Time: Nov 14 23:57:43 2014  
 Quant Method : Z:\HPCHEM1\BNA F\METHODS\8270-BF111214.M  
 Quant Title : ASP BNA STANDARDS FOR 5 POINT CALIBRATION  
 QLast Update : Wed Nov 12 18:46:55 2014  
 Response via : Initial Calibration



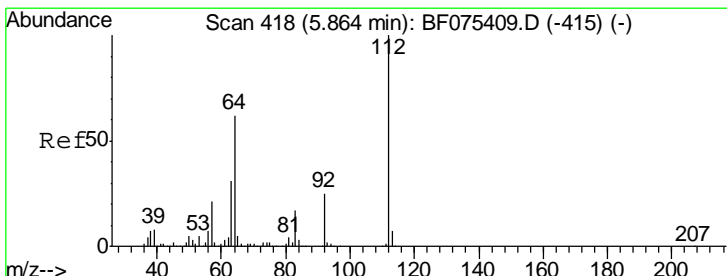
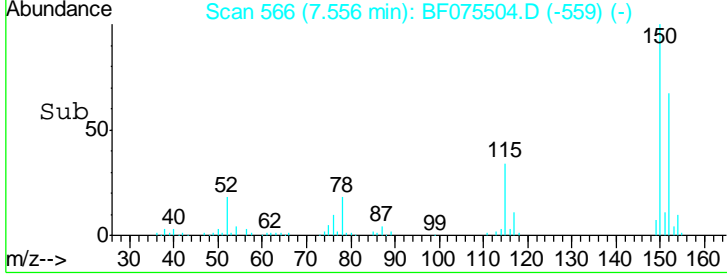
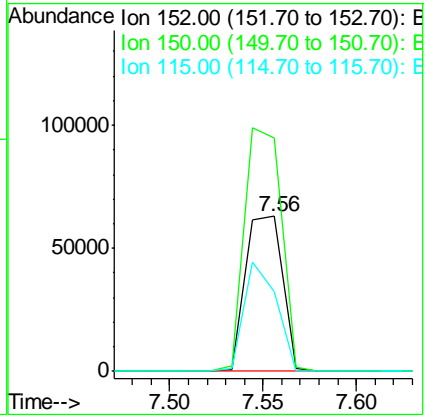
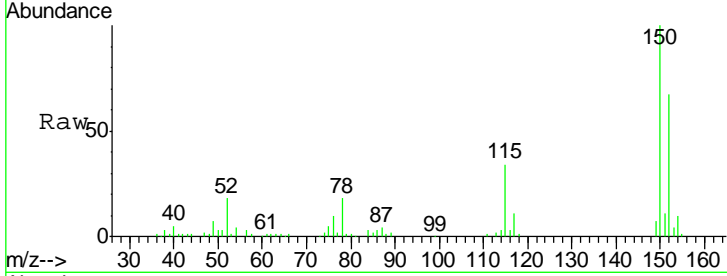


#1  
 1,4-Dichlorobenzene-d4  
 Concen: 20.00 ng  
 RT: 7.56 min Scan# 566  
 Delta R.T. -0.02 min  
 Lab File: BF075504.D  
 Acq: 14 Nov 2014 20:05

**Instrument :**  
 BNA\_F  
**ClientSampled :**  
 PB80327TB

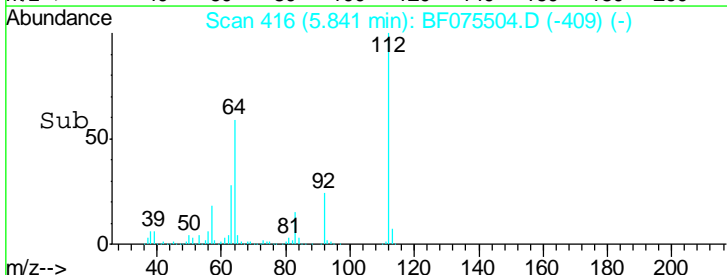
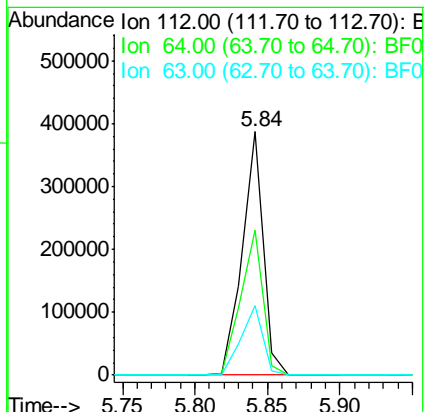
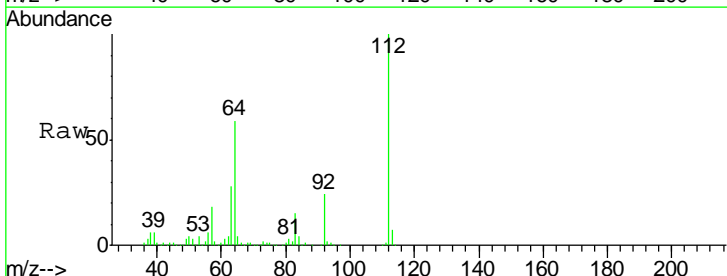
| Tgt Ion | Resp  | Lower | Upper |
|---------|-------|-------|-------|
| 152     | 87015 |       |       |
| 150     | 100   | 127.2 | 190.8 |
| 115     | 51.1  | 57.1  | 85.7# |

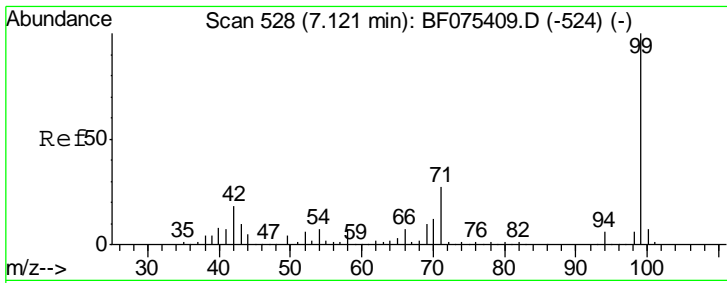
**Manual Integrations**  
**APPROVED**  
 mohammad  
 11/17/2014 7:34:19 PM



#5  
 2-Fluorophenol  
 Concen: 78.88 ng  
 RT: 5.84 min Scan# 416  
 Delta R.T. -0.02 min  
 Lab File: BF075504.D  
 Acq: 14 Nov 2014 20:05

| Tgt Ion | Resp   | Lower | Upper |
|---------|--------|-------|-------|
| 112     | 388513 |       |       |
| 64      | 100    | 45.8  | 68.6  |
| 63      | 28.4   | 22.7  | 34.1  |



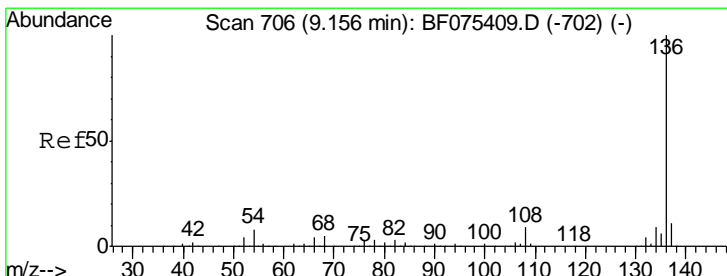
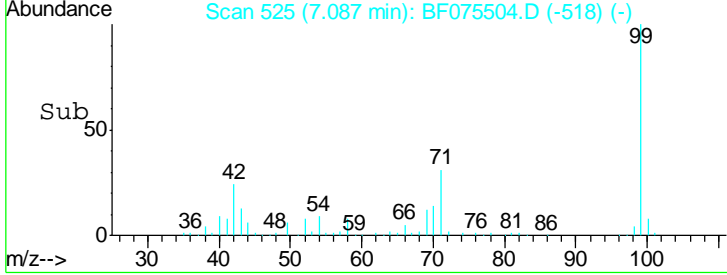
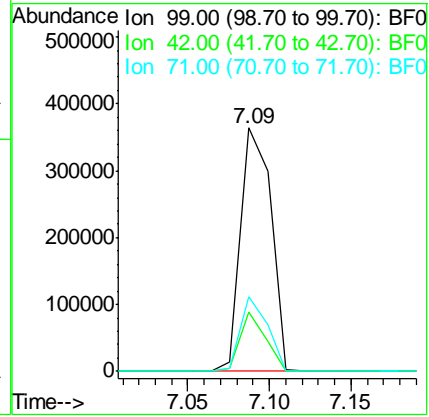
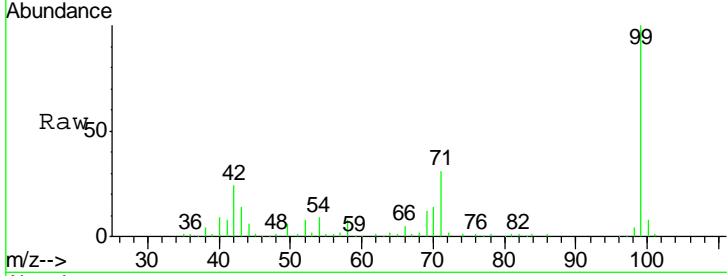


#7  
 Phenol-d6  
 Concen: 78.80 ng  
 RT: 7.09 min Scan# 525  
 Delta R.T. -0.02 min  
 Lab File: BF075504.D  
 Acq: 14 Nov 2014 20:05

**Instrument :**  
 BNA\_F  
**ClientSampled :**  
 PB80327TB

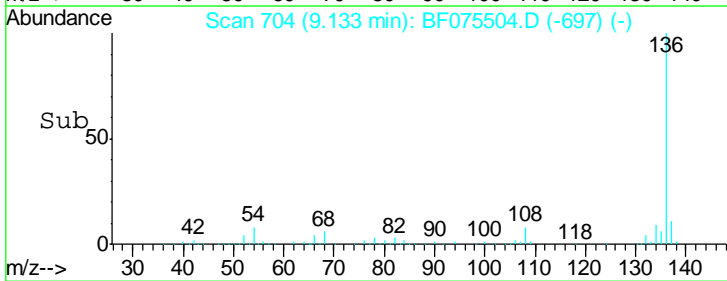
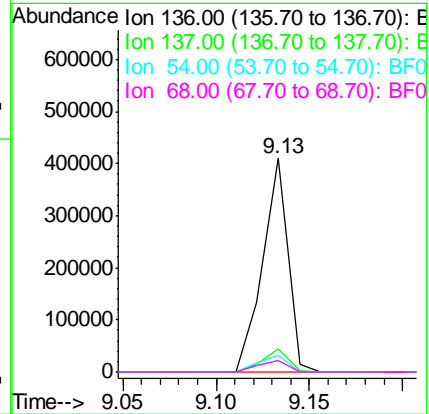
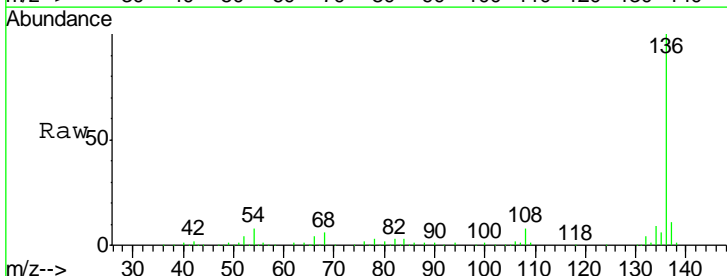
| Tgt Ion | Resp   | Lower | Upper |
|---------|--------|-------|-------|
| 99      | 466750 |       |       |
| 99      | 100    |       |       |
| 42      | 24.1   | 19.8  | 29.6  |
| 71      | 30.6   | 25.5  | 38.3  |

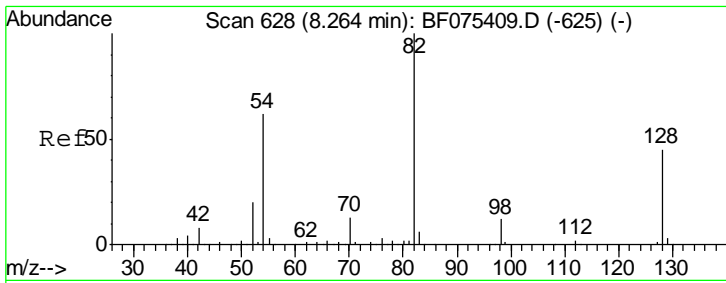
**Manual Integrations**  
**APPROVED**  
 mohammad  
 11/17/2014 7:34:19 PM



#21  
 Naphthalene-d8  
 Concen: 20.00 ng  
 RT: 9.13 min Scan# 704  
 Delta R.T. -0.02 min  
 Lab File: BF075504.D  
 Acq: 14 Nov 2014 20:05

| Tgt Ion | Resp   | Lower | Upper |
|---------|--------|-------|-------|
| 136     | 384496 |       |       |
| 136     | 100    |       |       |
| 137     | 10.6   | 8.2   | 12.4  |
| 54      | 7.9    | 6.2   | 9.4   |
| 68      | 5.6    | 3.4   | 5.2#  |



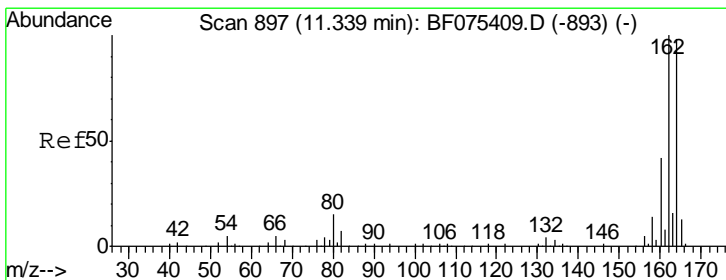
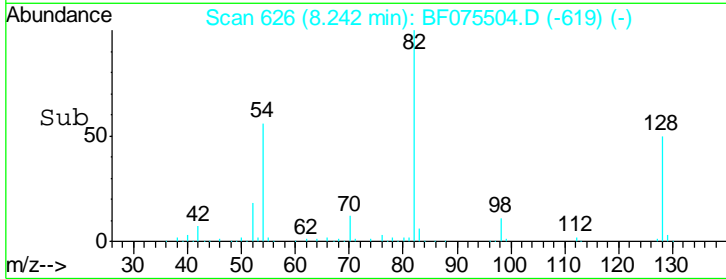
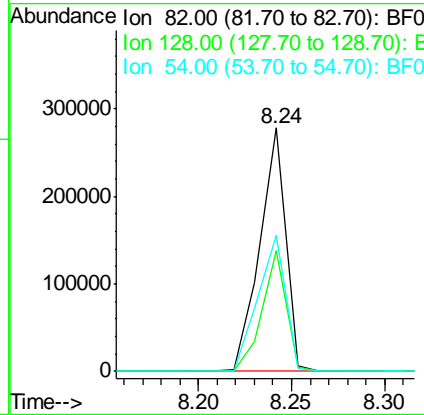
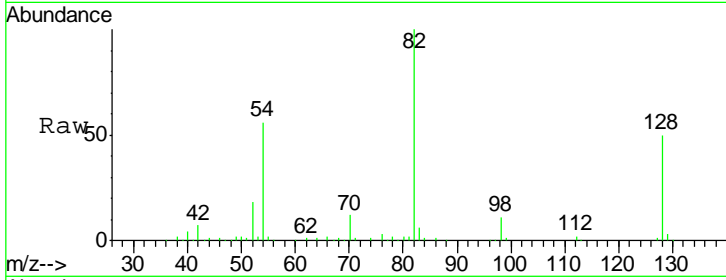


#23  
 Nitrobenzene-d5  
 Concen: 50.66 ng  
 RT: 8.24 min Scan# 626  
 Delta R.T. -0.02 min  
 Lab File: BF075504.D  
 Acq: 14 Nov 2014 20:05

**Instrument :**  
 BNA\_F  
**ClientSampled :**  
 PB80327TB

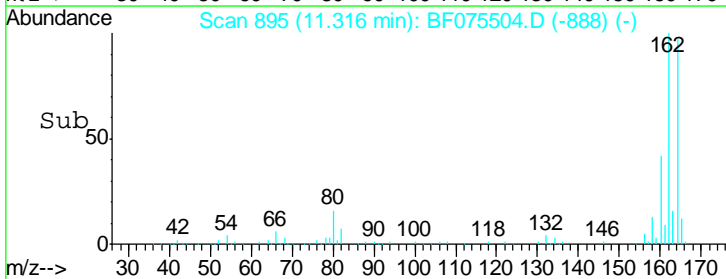
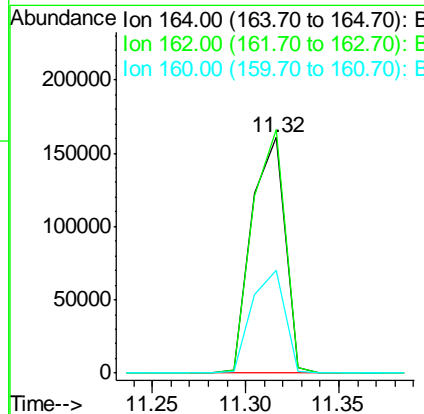
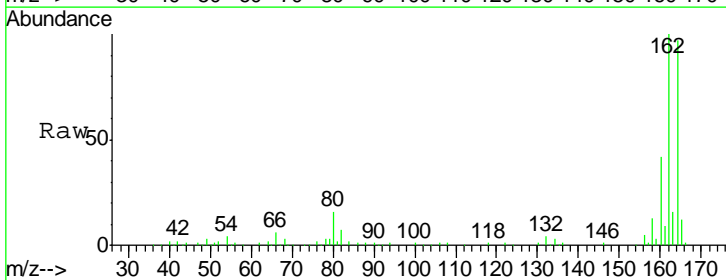
| Tgt Ion | Resp | Lower | Upper |
|---------|------|-------|-------|
| 82      | 100  |       |       |
| 128     | 49.5 | 37.8  | 56.6  |
| 54      | 55.9 | 49.8  | 74.8  |

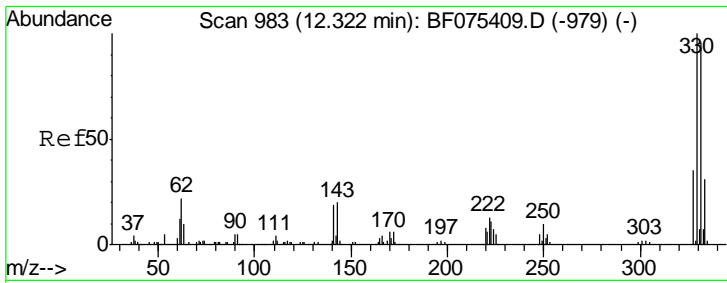
**Manual Integrations**  
**APPROVED**  
 mohammad  
 11/17/2014 7:34:19 PM



#38  
 Acenaphthene-d10  
 Concen: 20.00 ng  
 RT: 11.32 min Scan# 895  
 Delta R.T. -0.02 min  
 Lab File: BF075504.D  
 Acq: 14 Nov 2014 20:05

| Tgt Ion | Resp  | Lower | Upper |
|---------|-------|-------|-------|
| 164     | 100   |       |       |
| 162     | 103.4 | 79.1  | 118.7 |
| 160     | 43.9  | 34.6  | 51.8  |



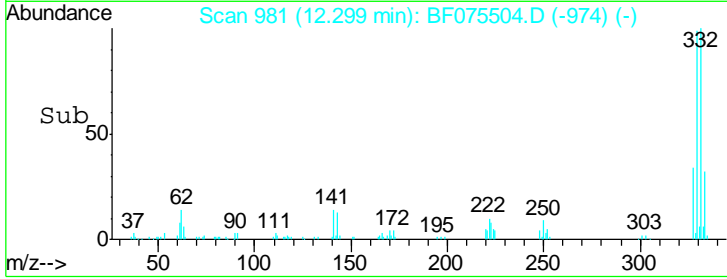
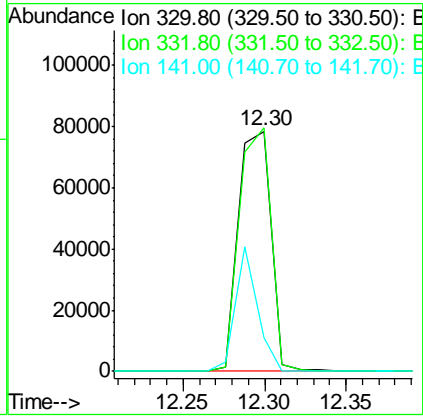
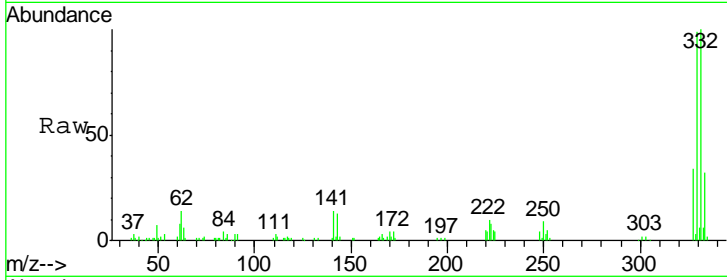


#41  
 2,4,6-Tribromophenol  
 Concen: 65.37 ng  
 RT: 12.30 min Scan# 981  
 Delta R.T. -0.02 min  
 Lab File: BF075504.D  
 Acq: 14 Nov 2014 20:05

**Instrument :**  
 BNA\_F  
**ClientSampled :**  
 PB80327TB

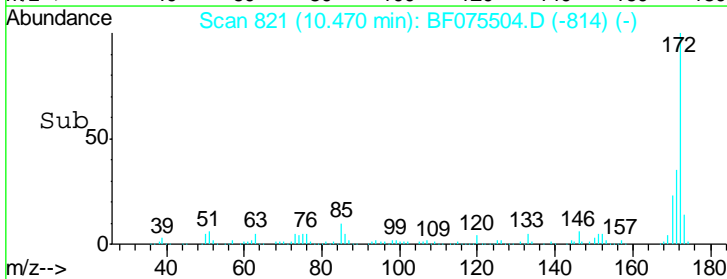
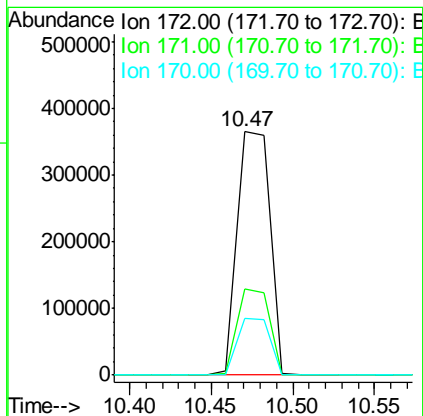
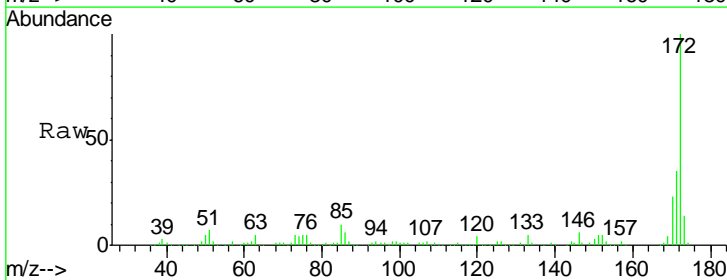
| Tgt Ion | Resp   | Lower | Upper |
|---------|--------|-------|-------|
| 330     | 108244 |       |       |
| 332     | 98.4   | 74.5  | 111.7 |
| 141     | 34.8   | 30.7  | 46.1  |

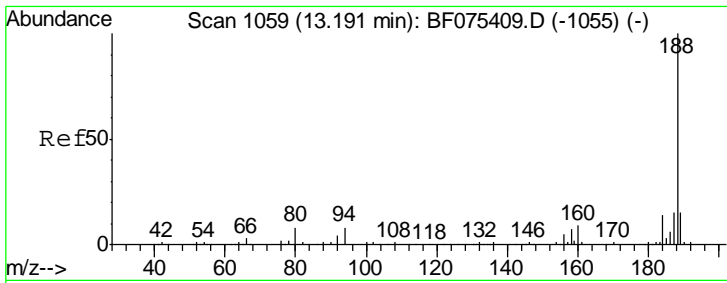
**Manual Integrations**  
**APPROVED**  
 mohammad  
 11/17/2014 7:34:19 PM



#44  
 2-Fluorobiphenyl  
 Concen: 46.11 ng  
 RT: 10.47 min Scan# 821  
 Delta R.T. -0.02 min  
 Lab File: BF075504.D  
 Acq: 14 Nov 2014 20:05

| Tgt Ion | Resp   | Lower | Upper |
|---------|--------|-------|-------|
| 172     | 504407 |       |       |
| 171     | 35.3   | 27.3  | 40.9  |
| 170     | 23.1   | 18.4  | 27.6  |



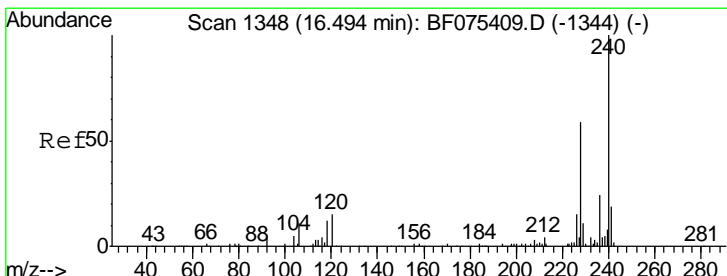
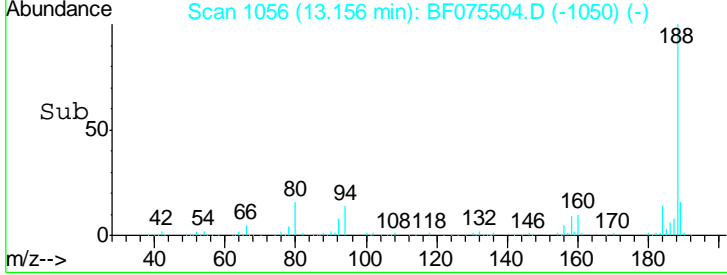
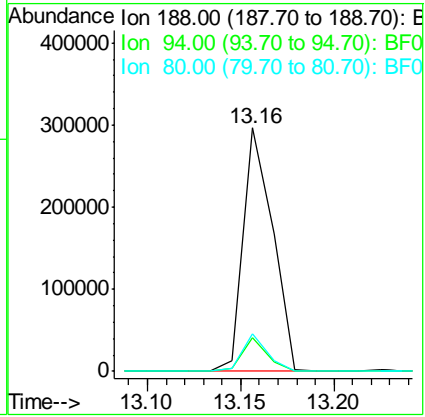
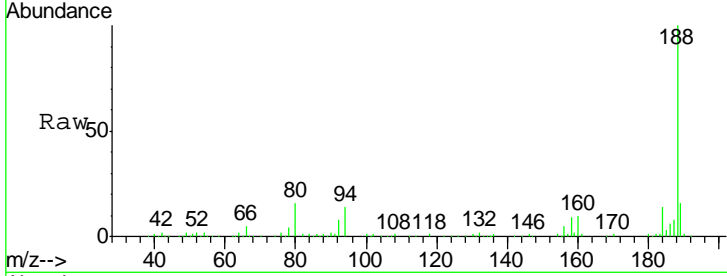


#63  
 Phenanthrene-d10  
 Concen: 20.00 ng  
 RT: 13.16 min Scan# 1056  
 Delta R.T. -0.03 min  
 Lab File: BF075504.D  
 Acq: 14 Nov 2014 20:05

Instrument :  
 BNA\_F  
 ClientSampled :  
 PB80327TB

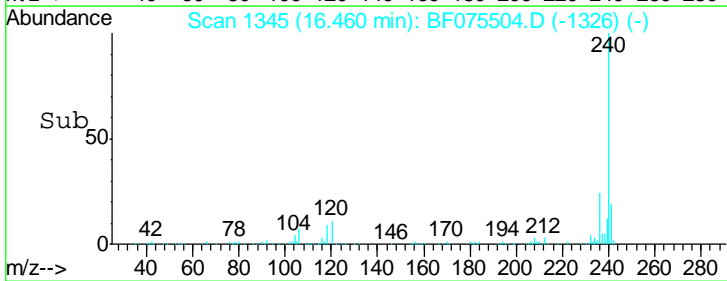
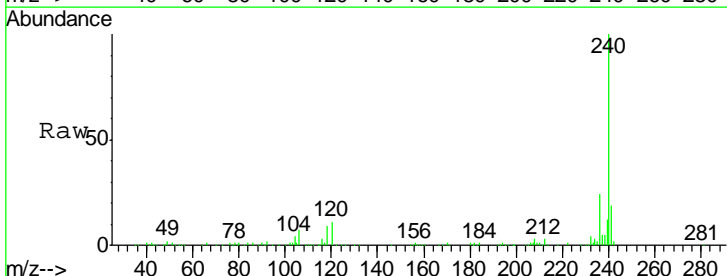
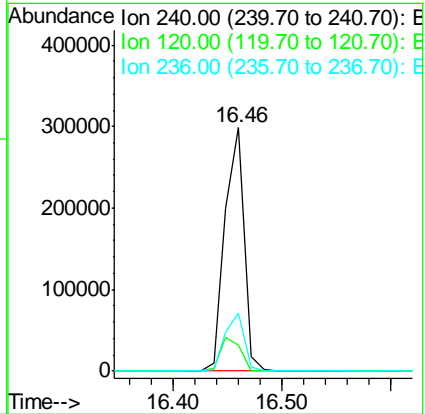
| Tgt Ion | Resp | Lower | Upper |
|---------|------|-------|-------|
| 188     | 100  |       |       |
| 94      | 14.0 | 7.8   | 11.6# |
| 80      | 15.6 | 8.0   | 12.0# |

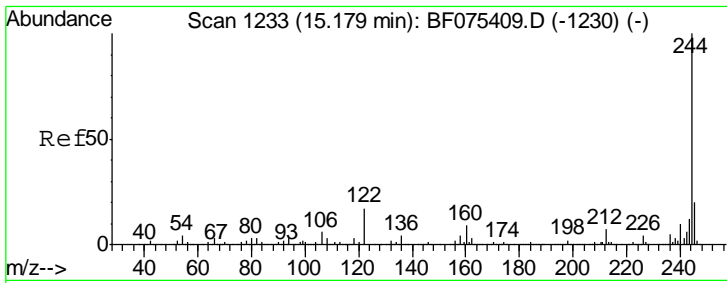
Manual Integrations  
 APPROVED  
 mohammad  
 11/17/2014 7:34:19 PM



#75  
 Chrysene-d12  
 Concen: 20.00 ng  
 RT: 16.46 min Scan# 1345  
 Delta R.T. -0.08 min  
 Lab File: BF075504.D  
 Acq: 14 Nov 2014 20:05

| Tgt Ion | Resp | Lower | Upper |
|---------|------|-------|-------|
| 240     | 100  |       |       |
| 120     | 10.6 | 9.6   | 14.4  |
| 236     | 24.0 | 18.9  | 28.3  |



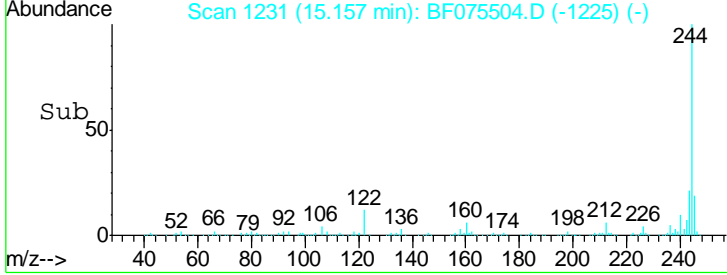
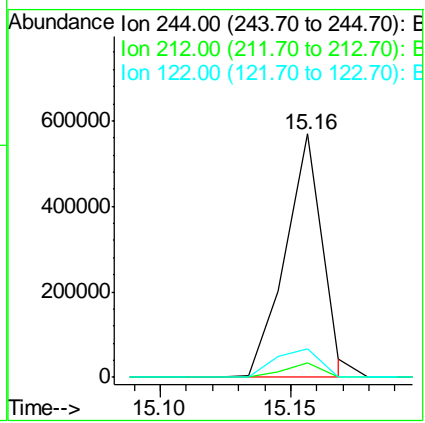
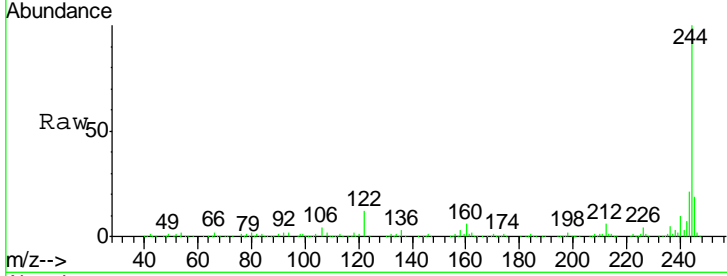


#78  
 Terphenyl-d14  
 Concen: 41.38 ng  
 RT: 15.16 min Scan# 1231  
 Delta R.T. -0.03 min  
 Lab File: BF075504.D  
 Acq: 14 Nov 2014 20:05

**Instrument :**  
 BNA\_F  
**ClientSampled :**  
 PB80327TB

| Tgt Ion | Resp | Lower | Upper |
|---------|------|-------|-------|
| 244     | 100  |       |       |
| 212     | 5.9  | 5.5   | 8.3   |
| 122     | 11.8 | 9.7   | 14.5  |

**Manual Integrations**  
**APPROVED**  
 mohammad  
 11/17/2014 7:34:19 PM



#86  
 Perylene-d12  
 Concen: 20.00 ng  
 RT: 18.21 min Scan# 1498  
 Delta R.T. -0.23 min  
 Lab File: BF075504.D  
 Acq: 14 Nov 2014 20:05

| Tgt Ion | Resp | Lower | Upper |
|---------|------|-------|-------|
| 264     | 100  |       |       |
| 260     | 23.7 | 17.9  | 26.9  |
| 265     | 21.8 | 16.3  | 24.5  |

