

Data Path : Z:\HPCHEM1\BNA F\DATA\BF111414\  
 Data File : BF075540.D  
 Acq On : 15 Nov 2014 14:25  
 Operator : TP / JJ  
 Sample : F4706-03  
 Misc :  
 ALS Vial : 41 Sample Multiplier: 1

Instrument :  
 BNA\_F  
 ClientSampleId :  
 SB-05(36-38)-111014

Quant Time: Nov 16 02:39:25 2014  
 Quant Method : Z:\HPCHEM1\BNA F\METHODS\8270-BF111214.M  
 Quant Title : ASP BNA STANDARDS FOR 5 POINT CALIBRATION  
 QLast Update : Sun Nov 16 02:30:12 2014  
 Response via : Initial Calibration

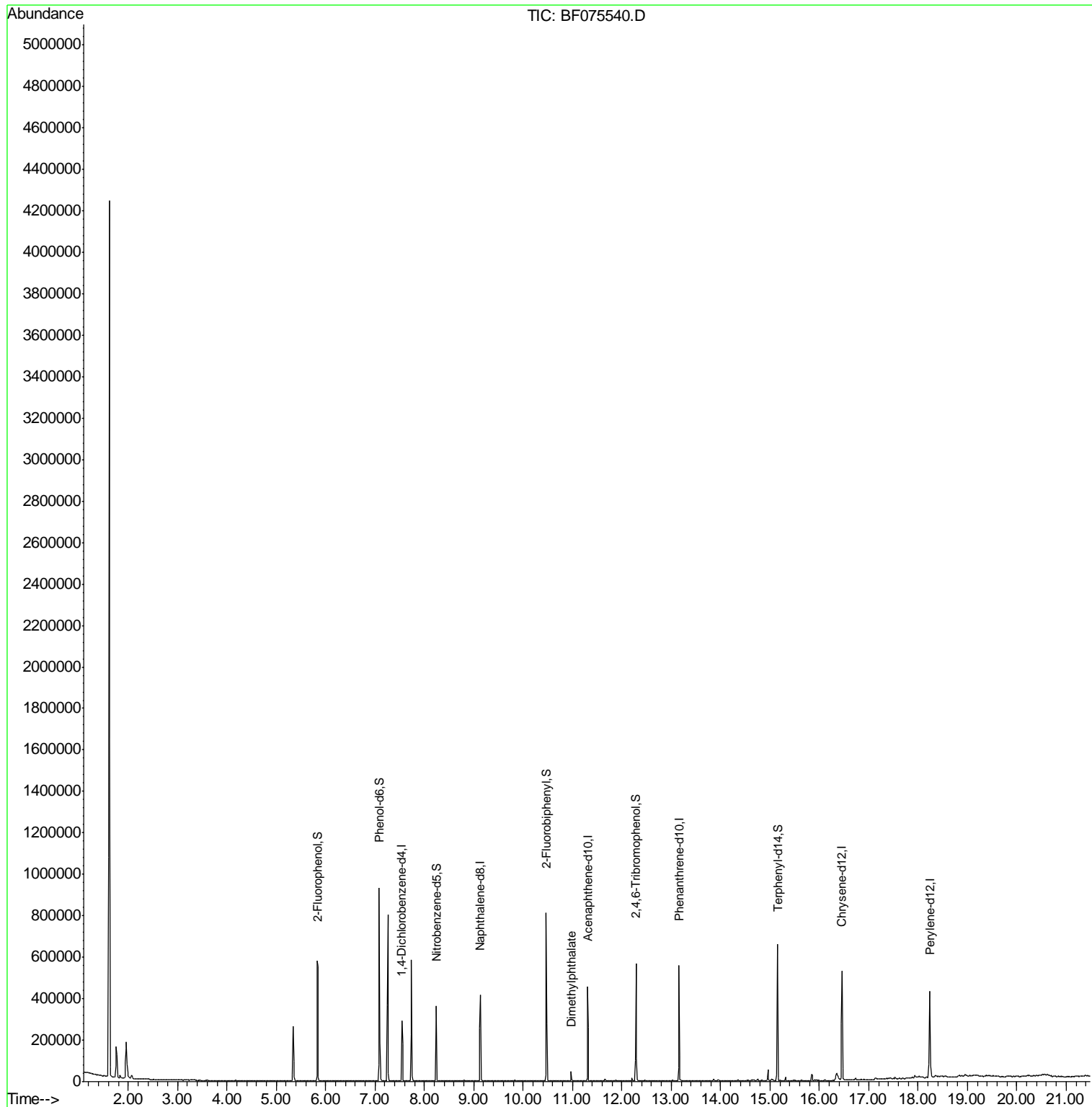
Internal Standards	R.T.	QIon	Response	Conc	Units	Dev(Min)
1) 1,4-Dichlorobenzene-d4	7.54	152	55635	20.00	ng	-0.01
21) Naphthalene-d8	9.13	136	236288	20.00	ng	0.00
38) Acenaphthene-d10	11.30	164	121542	20.00	ng	-0.01
63) Phenanthrene-d10	13.16	188	203983	20.00	ng	0.00
75) Chrysene-d12	16.46	240	224291	20.00	ng	0.00
86) Perylene-d12	18.24	264	232486	20.00	ng	0.01
System Monitoring Compounds						
5) 2-Fluorophenol	5.84	112	236888	75.22	ng	0.01
7) Phenol-d6	7.09	99	293070	77.39	ng	0.00
23) Nitrobenzene-d5	8.24	82	152557	47.34	ng	0.00
41) 2,4,6-Tribromophenol	12.29	330	65534	64.38	ng	-0.01
44) 2-Fluorobiphenyl	10.47	172	274666	40.84	ng	-0.01
78) Terphenyl-d14	15.16	244	309529	37.15	ng	0.00
Target Compounds						Qvalue
49) Dimethylphthalate	10.97	163	18610	2.24	ng	100

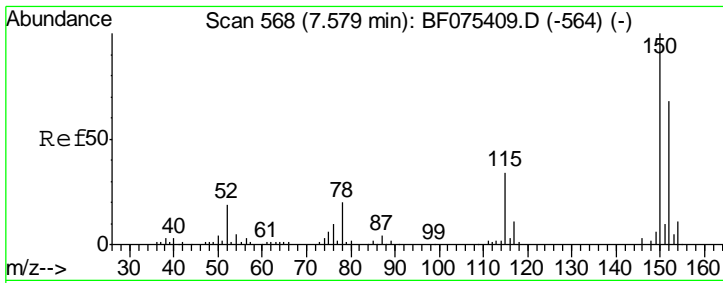
(#) = qualifier out of range (m) = manual integration (+) = signals summed

Data Path : Z:\HPCHEM1\BNA F\DATA\BF111414\  
 Data File : BF075540.D  
 Acq On : 15 Nov 2014 14:25  
 Operator : TP / JJ  
 Sample : F4706-03  
 Misc :  
 ALS Vial : 41 Sample Multiplier: 1

Instrument :  
 BNA\_F  
 ClientSampleId :  
 SB-05(36-38)-111014

Quant Time: Nov 16 02:39:25 2014  
 Quant Method : Z:\HPCHEM1\BNA F\METHODS\8270-BF111214.M  
 Quant Title : ASP BNA STANDARDS FOR 5 POINT CALIBRATION  
 QLast Update : Sun Nov 16 02:30:12 2014  
 Response via : Initial Calibration

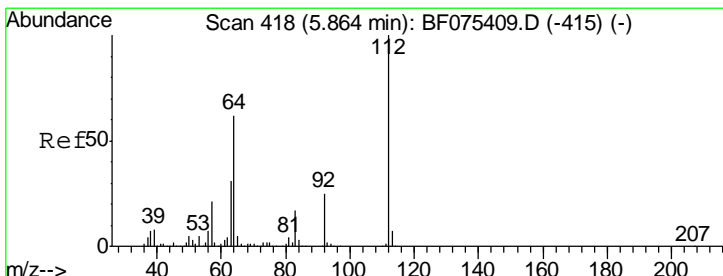
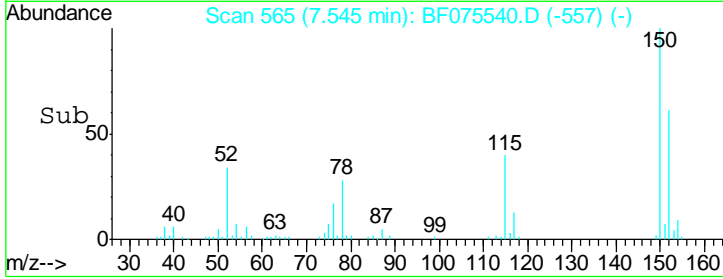
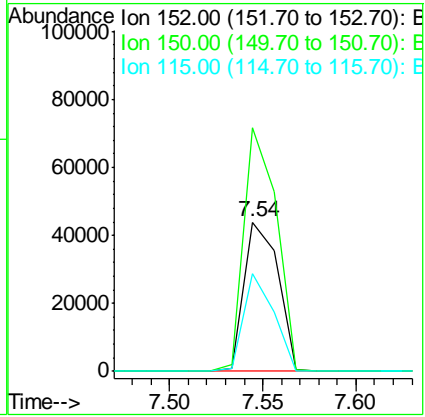
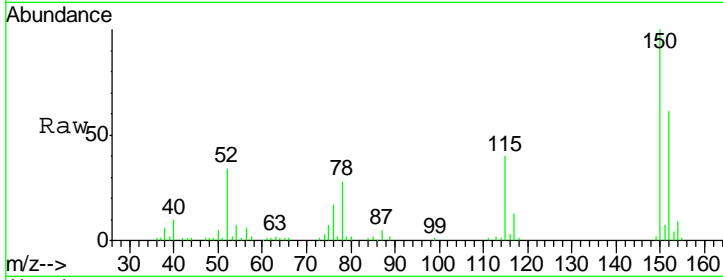




#1  
 1,4-Dichlorobenzene-d4  
 Concen: 20.00 ng  
 RT: 7.54 min Scan# 565  
 Delta R.T. -0.01 min  
 Lab File: BF075540.D  
 Acq: 15 Nov 2014 14:25

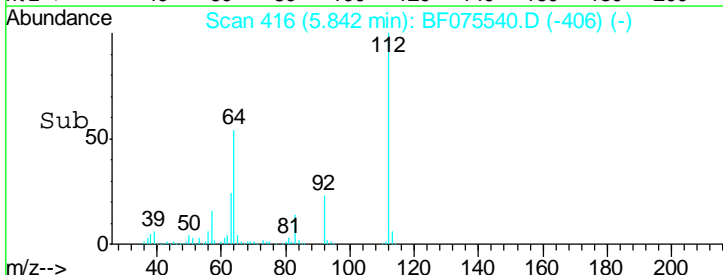
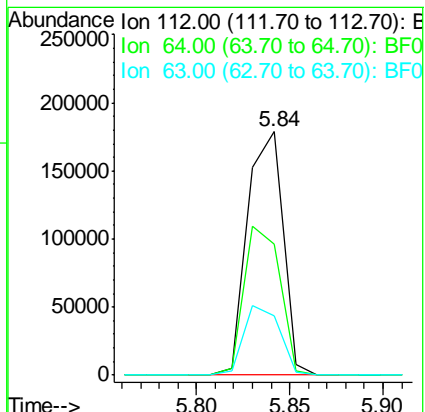
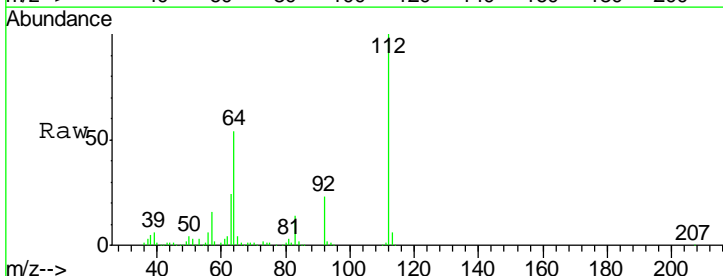
**Instrument :**  
 BNA\_F  
**ClientSampleId :**  
 SB-05(36-38)-111014

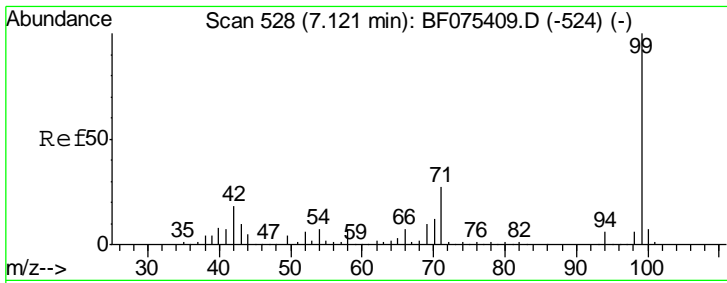
Tgt Ion	Resp	Lower	Upper
152	100		
150	162.9	127.2	190.8
115	65.2	57.1	85.7



#5  
 2-Fluorophenol  
 Concen: 75.22 ng  
 RT: 5.84 min Scan# 416  
 Delta R.T. 0.01 min  
 Lab File: BF075540.D  
 Acq: 15 Nov 2014 14:25

Tgt Ion	Resp	Lower	Upper
112	100		
64	53.6	45.8	68.6
63	24.2	22.7	34.1

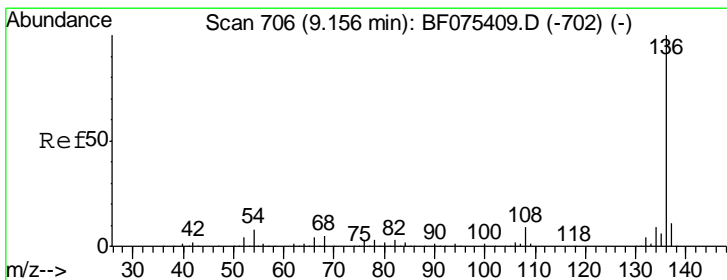
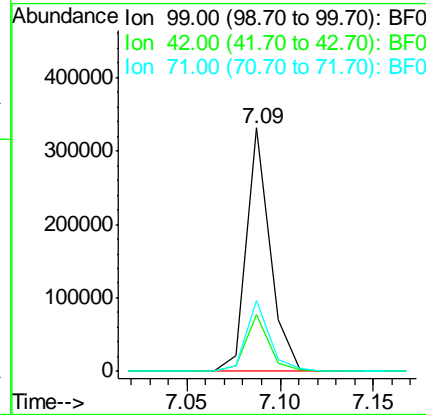
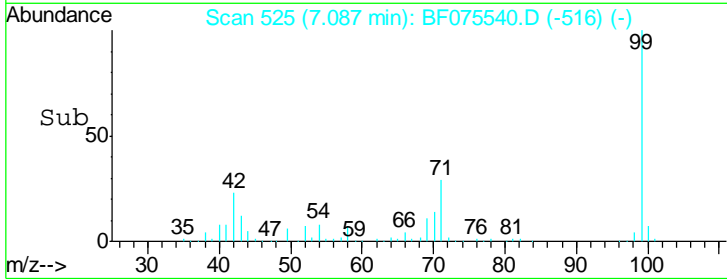
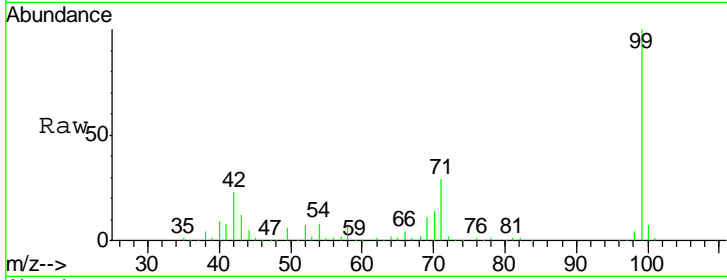




#7  
 Phenol-d6  
 Concen: 77.39 ng  
 RT: 7.09 min Scan# 525  
 Delta R.T. 0.00 min  
 Lab File: BF075540.D  
 Acq: 15 Nov 2014 14:25

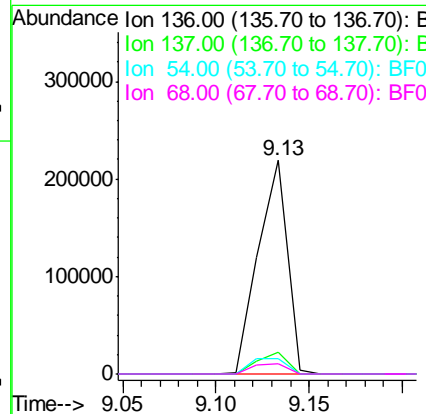
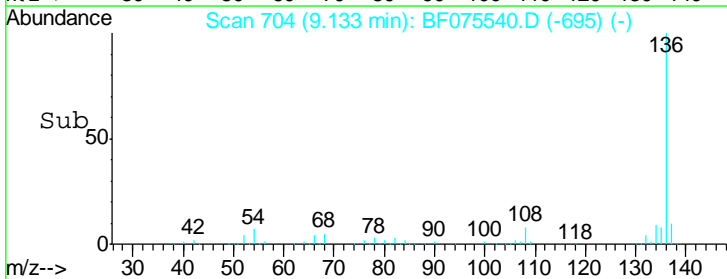
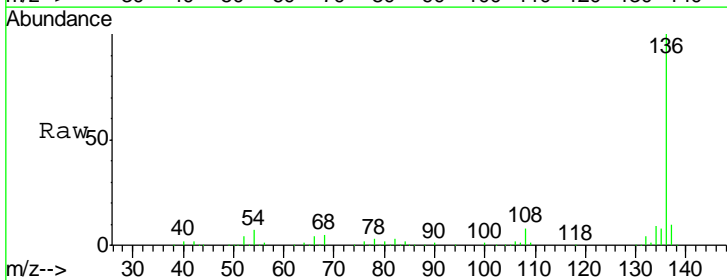
Instrument :  
 BNA\_F  
 ClientSampleId :  
 SB-05(36-38)-111014

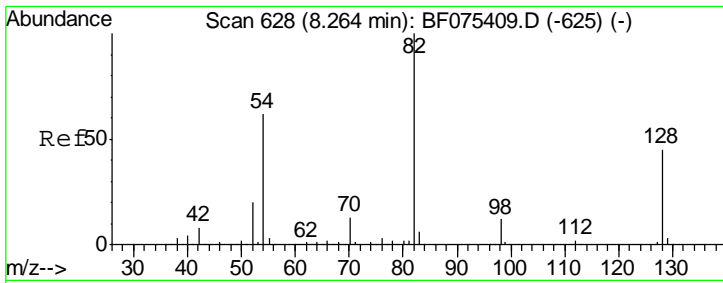
Tgt Ion	Resp	Lower	Upper
99	293070		
42	23.1	19.8	29.6
71	29.3	25.5	38.3



#21  
 Naphthalene-d8  
 Concen: 20.00 ng  
 RT: 9.13 min Scan# 704  
 Delta R.T. 0.00 min  
 Lab File: BF075540.D  
 Acq: 15 Nov 2014 14:25

Tgt Ion	Resp	Lower	Upper
136	236288		
137	10.2	8.2	12.4
54	7.3	6.2	9.4
68	4.8	3.4	5.2

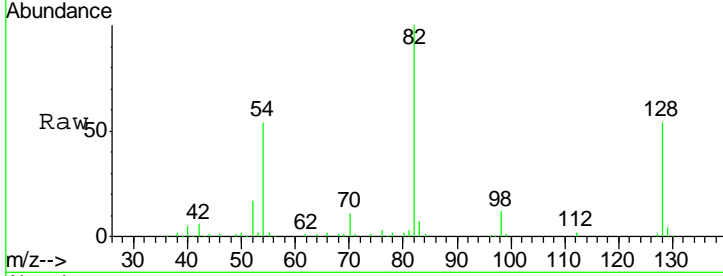




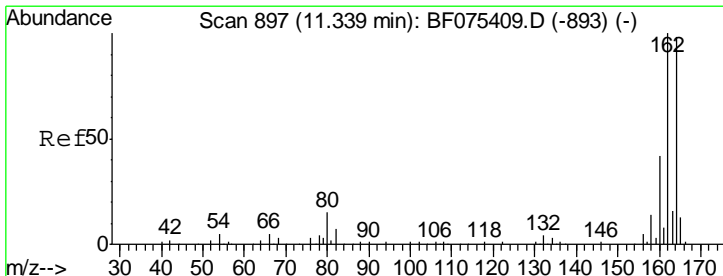
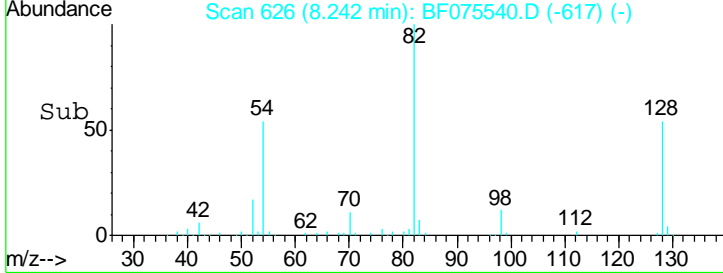
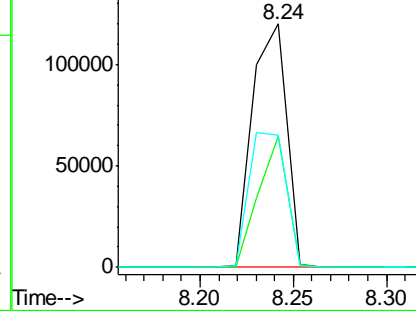
#23  
 Nitrobenzene-d5  
 Concen: 47.34 ng  
 RT: 8.24 min Scan# 626  
 Delta R.T. 0.00 min  
 Lab File: BF075540.D  
 Acq: 15 Nov 2014 14:25

Instrument :  
 BNA\_F  
 ClientSampleId :  
 SB-05(36-38)-111014

Tgt Ion	Resp	Lower	Upper
82	152557		
128	53.7	37.8	56.6
54	54.1	49.8	74.8

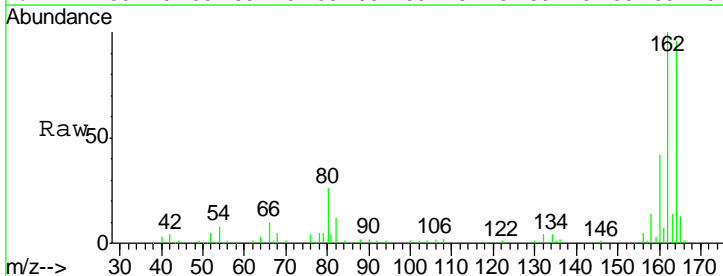


Abundance Ion 82.00 (81.70 to 82.70): BF0  
 Ion 128.00 (127.70 to 128.70): E  
 Ion 54.00 (53.70 to 54.70): BF0

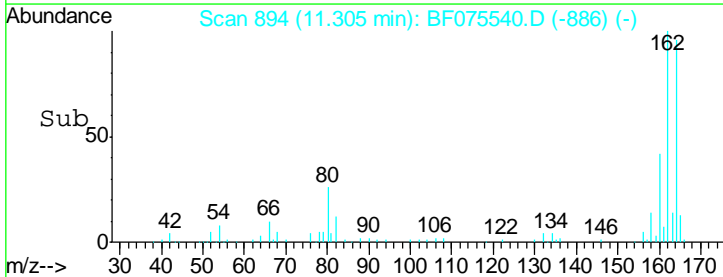
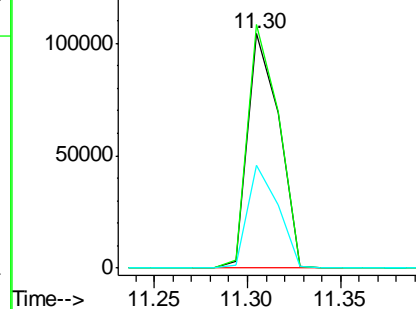


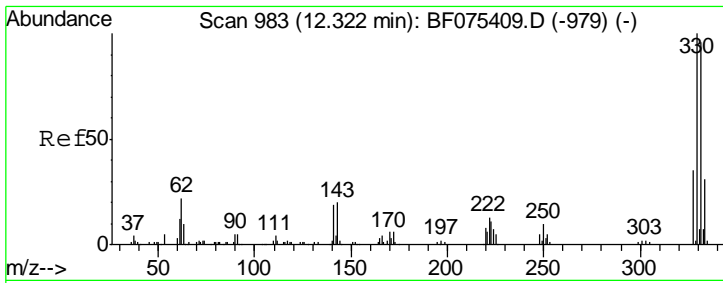
#38  
 Acenaphthene-d10  
 Concen: 20.00 ng  
 RT: 11.30 min Scan# 894  
 Delta R.T. -0.01 min  
 Lab File: BF075540.D  
 Acq: 15 Nov 2014 14:25

Tgt Ion	Resp	Lower	Upper
164	121542		
162	104.0	79.1	118.7
160	43.9	34.6	51.8



Abundance Ion 164.00 (163.70 to 164.70): E  
 Ion 162.00 (161.70 to 162.70): E  
 Ion 160.00 (159.70 to 160.70): E

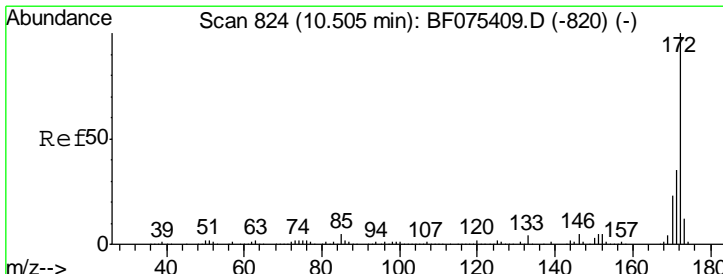
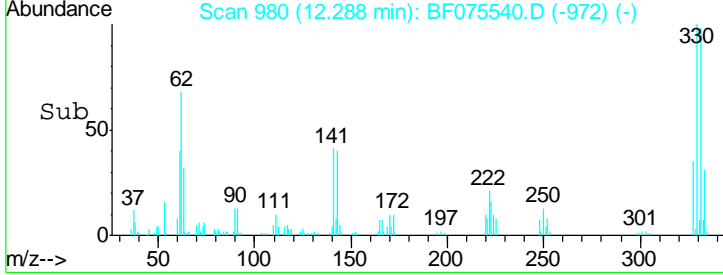
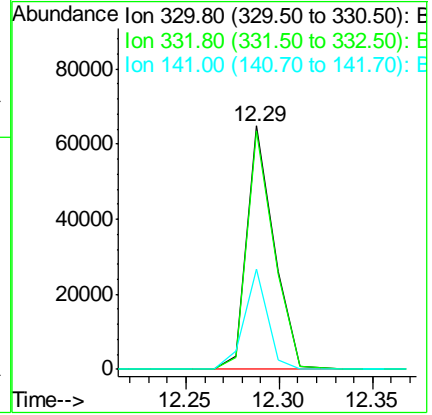
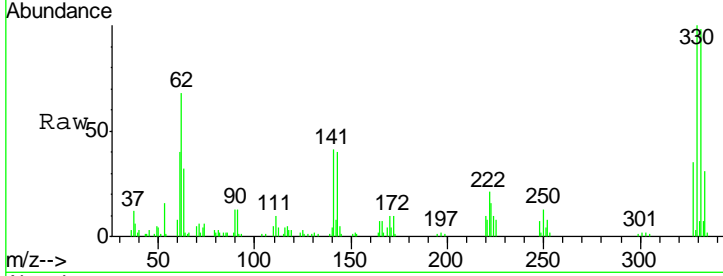




#41  
 2,4,6-Tribromophenol  
 Concen: 64.38 ng  
 RT: 12.29 min Scan# 980  
 Delta R.T. -0.01 min  
 Lab File: BF075540.D  
 Acq: 15 Nov 2014 14:25

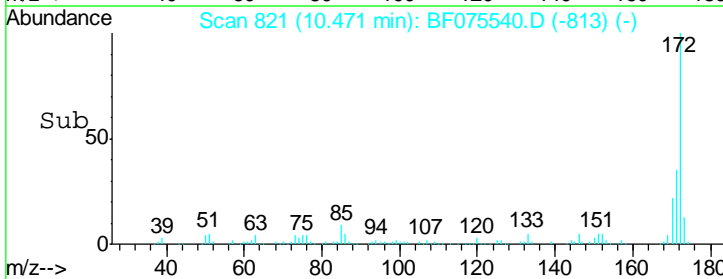
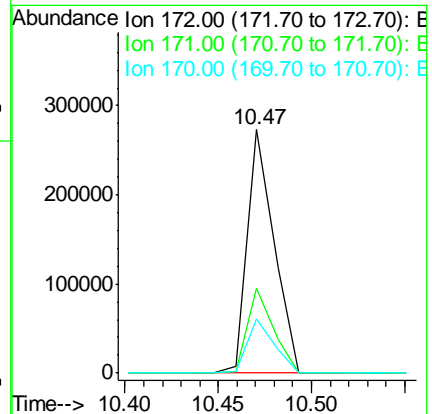
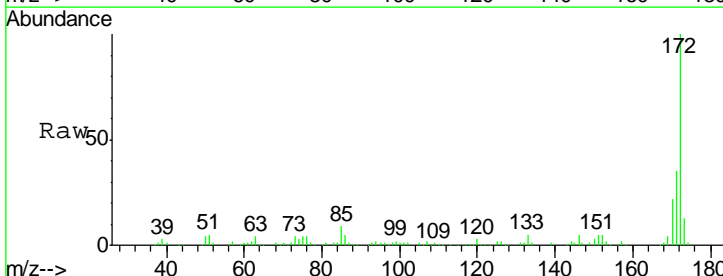
Instrument :  
 BNA\_F  
 ClientSampleId :  
 SB-05(36-38)-111014

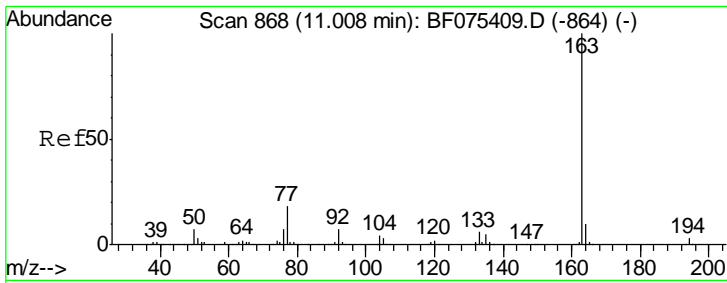
Tgt Ion	Resp	Lower	Upper
330	100		
332	97.7	74.5	111.7
141	35.9	30.7	46.1



#44  
 2-Fluorobiphenyl  
 Concen: 40.84 ng  
 RT: 10.47 min Scan# 821  
 Delta R.T. -0.01 min  
 Lab File: BF075540.D  
 Acq: 15 Nov 2014 14:25

Tgt Ion	Resp	Lower	Upper
172	100		
171	34.8	27.3	40.9
170	22.4	18.4	27.6



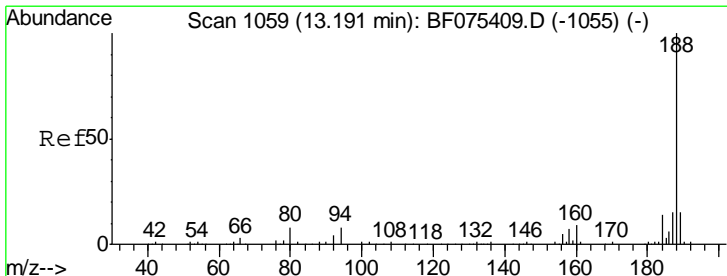
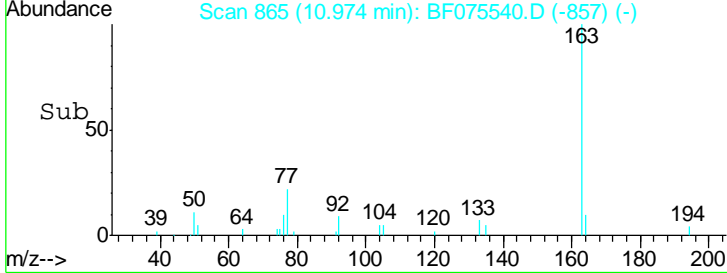
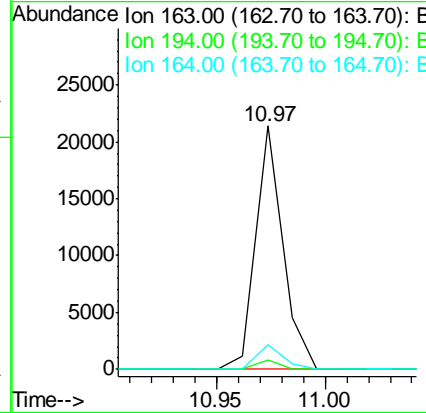
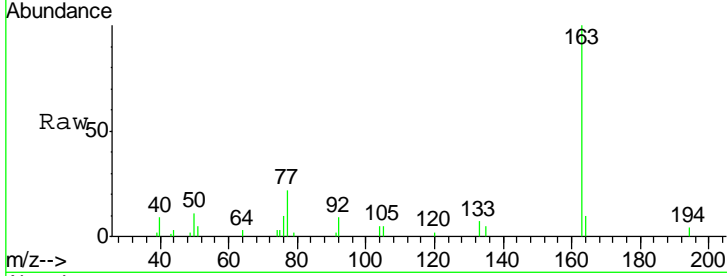


#49  
 Dimethylphthalate  
 Concen: 2.24 ng  
 RT: 10.97 min Scan# 865  
 Delta R.T. -0.01 min  
 Lab File: BF075540.D  
 Acq: 15 Nov 2014 14:25

Instrument :  
 BNA\_F  
 ClientSampleId :  
 SB-05(36-38)-111014

Tgt Ion:163 Resp: 18610

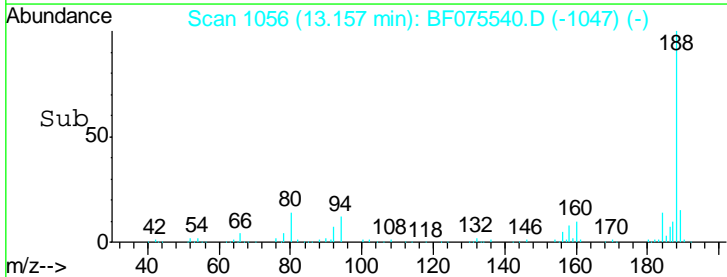
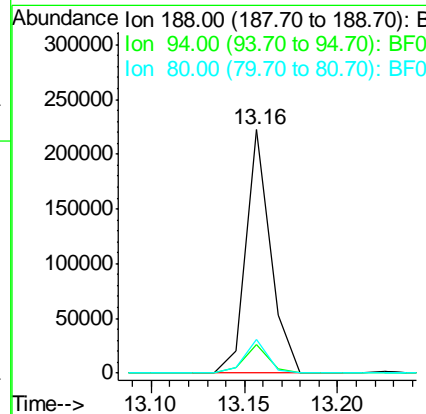
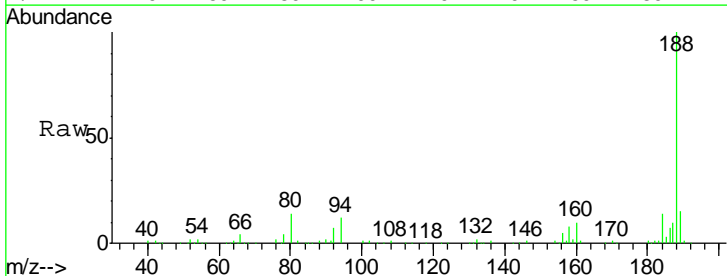
Ion	Ratio	Lower	Upper
163	100		
194	4.0	2.7	4.1
164	10.0	8.0	12.0

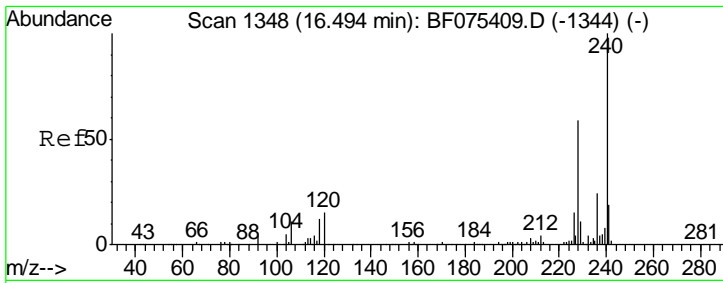


#63  
 Phenanthrene-d10  
 Concen: 20.00 ng  
 RT: 13.16 min Scan# 1056  
 Delta R.T. 0.00 min  
 Lab File: BF075540.D  
 Acq: 15 Nov 2014 14:25

Tgt Ion:188 Resp: 203983

Ion	Ratio	Lower	Upper
188	100		
94	12.0	7.8	11.6#
80	13.6	8.0	12.0#

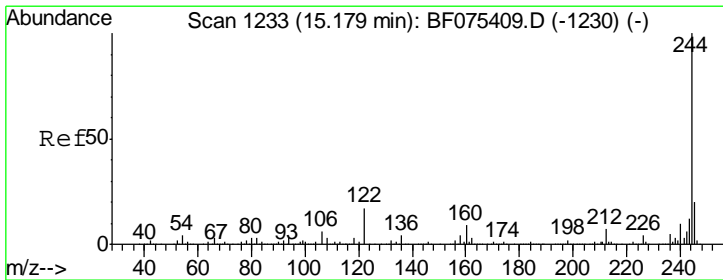
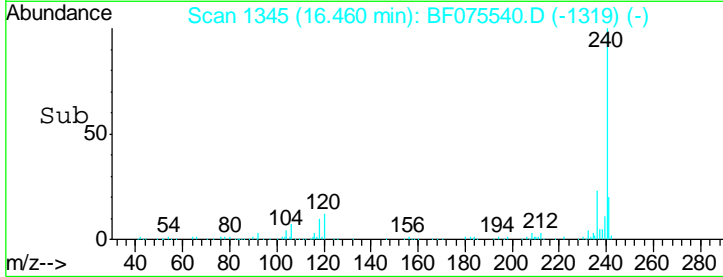
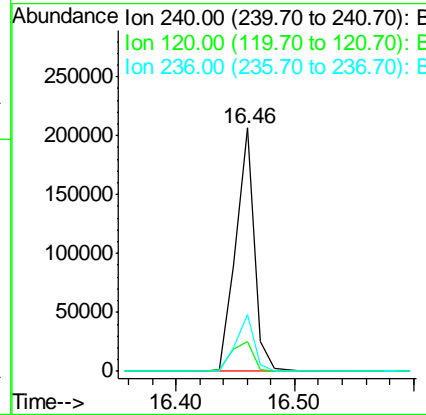
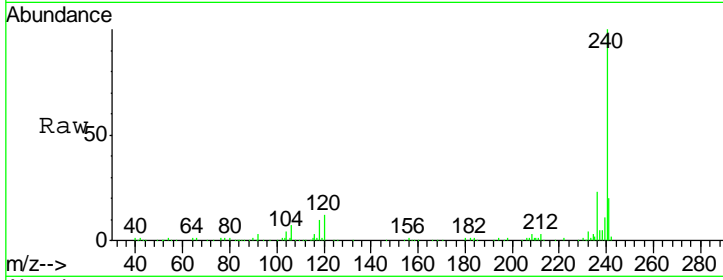




#75  
 Chrysene-d12  
 Concen: 20.00 ng  
 RT: 16.46 min Scan# 1345  
 Delta R.T. 0.00 min  
 Lab File: BF075540.D  
 Acq: 15 Nov 2014 14:25

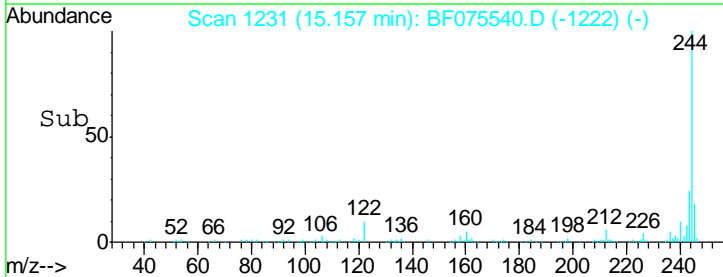
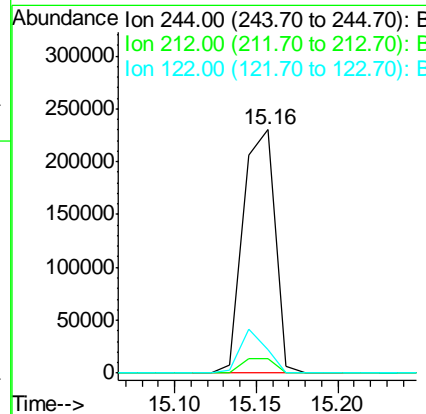
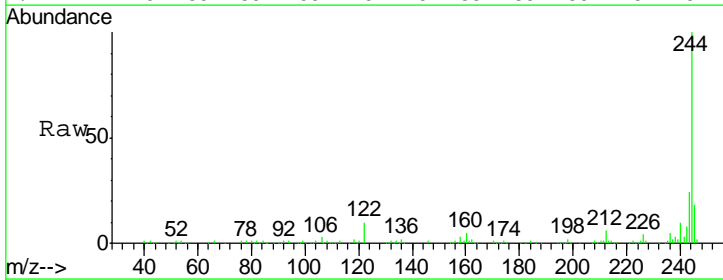
Instrument :  
 BNA\_F  
 ClientSampleId :  
 SB-05(36-38)-111014

Tgt Ion	Resp	Lower	Upper
240	100		
120	12.1	9.6	14.4
236	23.4	18.9	28.3

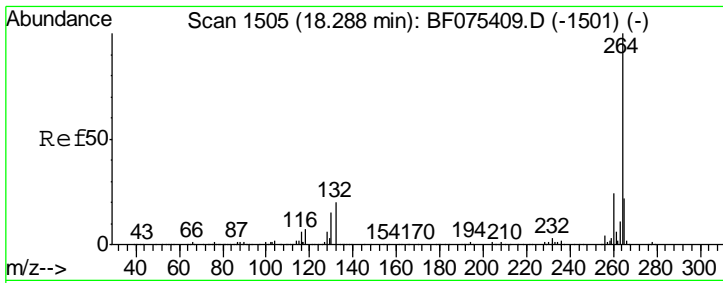


#78  
 Terphenyl-d14  
 Concen: 37.15 ng  
 RT: 15.16 min Scan# 1231  
 Delta R.T. 0.00 min  
 Lab File: BF075540.D  
 Acq: 15 Nov 2014 14:25

Tgt Ion	Resp	Lower	Upper
244	100		
212	5.7	5.5	8.3
122	9.6	9.7	14.5#







#86  
 Perylene-d12  
 Concen: 20.00 ng  
 RT: 18.24 min Scan# 1501  
 Delta R.T. 0.01 min  
 Lab File: BF075540.D  
 Acq: 15 Nov 2014 14:25

**Instrument :**  
 BNA\_F  
**ClientSampleId :**  
 SB-05(36-38)-111014

Tot Ion: 264 Resp: 232486

Ion	Ratio	Lower	Upper
264	100		
260	22.1	17.9	26.9
265	20.4	16.3	24.5

