

Data Path : Z:\HPCHEM1\BNA F\DATA\BF111414\  
 Data File : BF075524.D  
 Acq On : 15 Nov 2014 6:54  
 Operator : TP / JJ  
 Sample : F4680-05  
 Misc :  
 ALS Vial : 25 Sample Multiplier: 1

Instrument :  
 BNA\_F  
 ClientSampleId :  
 SVOC-GPC-BLANK

Integration Parameters: rteint.p  
 Integrator: RTE  
 Smoothing : ON Filtering: 5  
 Sampling : 1 Min Area: 3 % of largest Peak  
 Start Thrs: 0.2 Max Peaks: 100  
 Stop Thrs : 0 Peak Location: TOP

If leading or trailing edge < 100 prefer < Baseline drop else tangent >  
 Peak separation: 5

Method : Z:\HPCHEM1\BNA F\METHODS\8270-BF111214.M  
 Title : ASP BNA STANDARDS FOR 5 POINT CALIBRATION

Signal : TIC

peak #	R.T. min	first scan	max scan	last scan	PK TY	peak height	corr. area	corr. % max.	% of total
1	1.761	56	59	62	rVB	89274	114407	23.44%	4.030%
2	1.967	75	77	86	rVB	128893	175335	35.93%	6.176%
3	7.545	563	565	568	rVB	246142	286260	58.65%	10.083%
4	9.133	701	704	706	rBV	387802	408506	83.70%	14.388%
5	11.305	892	894	897	rBV	373740	425147	87.11%	14.975%
6	13.157	1054	1056	1059	rVB	465647	437509	89.64%	15.410%
7	16.460	1343	1345	1348	rBV	456001	487404	99.87%	17.167%
8	18.254	1499	1502	1505	rBV	388329	488051	100.00%	17.190%
9	18.917	1558	1560	1562	rBV2	2645	5067	1.04%	0.178%
10	21.009	1742	1743	1748	rVB5	2502	6360	1.30%	0.224%
11	21.375	1774	1775	1778	rBV3	3343	5088	1.04%	0.179%

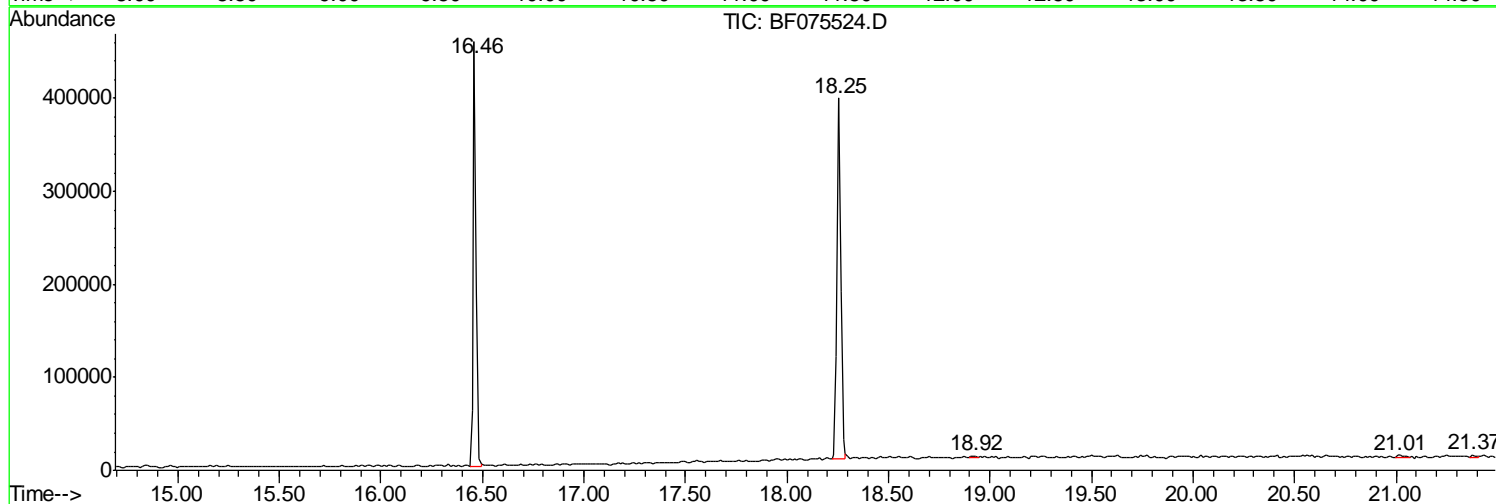
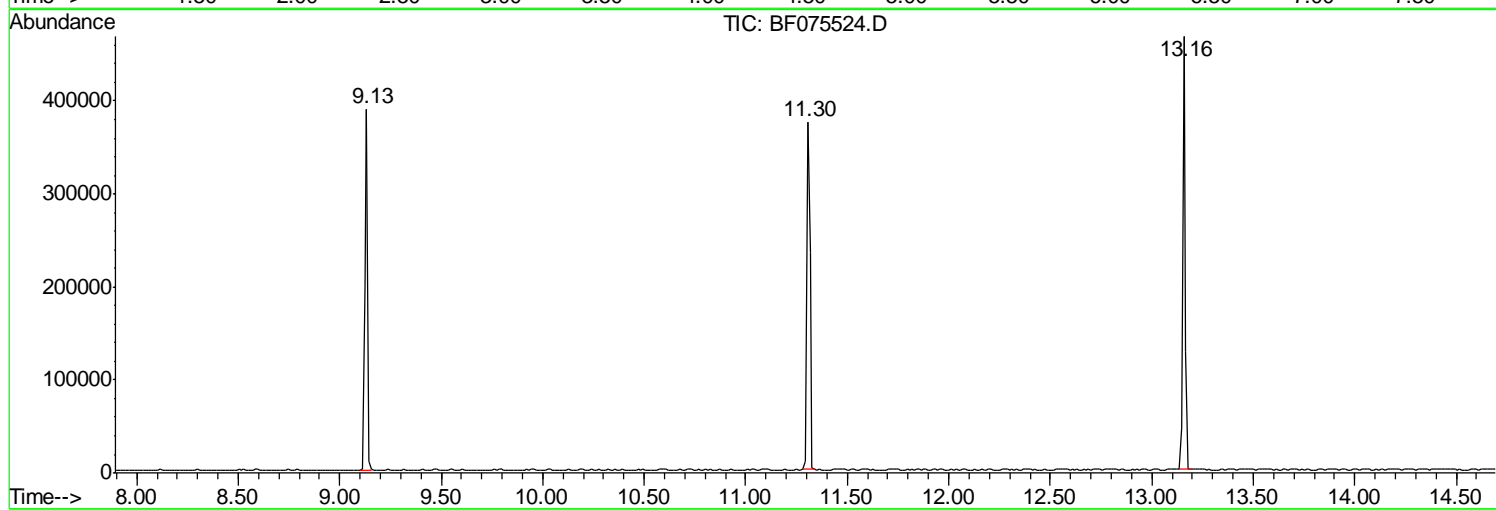
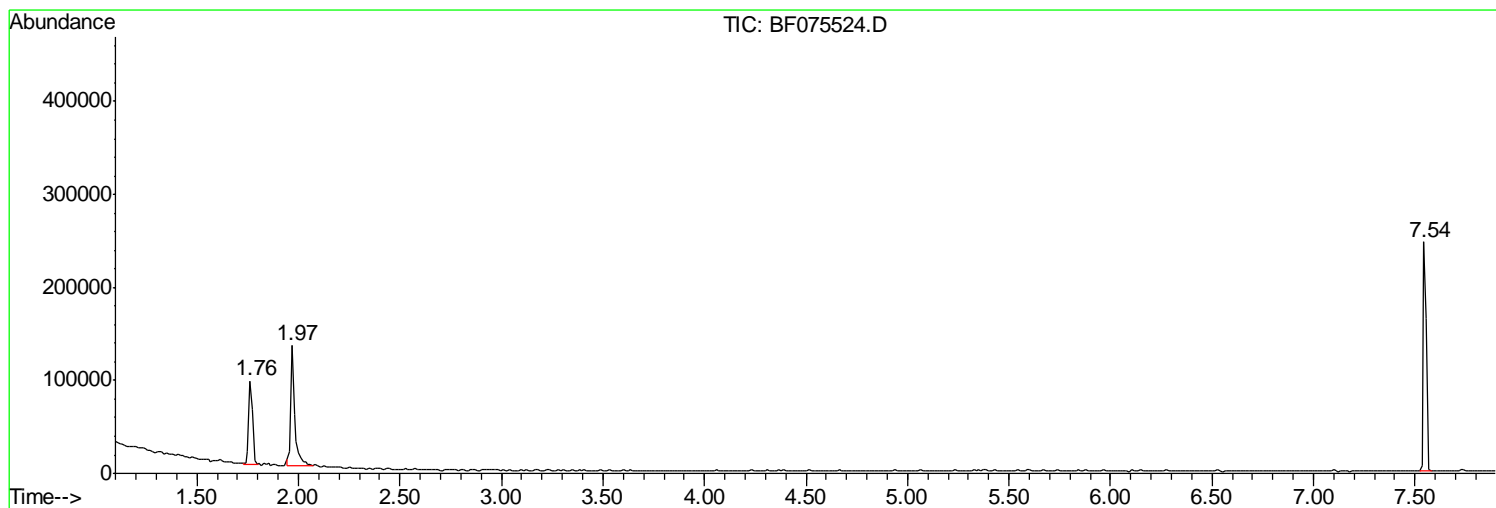
Sum of corrected areas: 2839134

Data Path : Z:\HPCHEM1\BNA F\DATA\BF111414\  
Data File : BF075524.D  
Acq On : 15 Nov 2014 6:54  
Operator : TP / JJ  
Sample : F4680-05  
Misc :  
ALS Vial : 25 Sample Multiplier: 1

Instrument :  
BNA\_F  
ClientSampleId :  
SVOC-GPC-BLANK

Quant Method : Z:\HPCHEM1\BNA F\METHODS\8270-BF111214.M  
Quant Title : ASP BNA STANDARDS FOR 5 POINT CALIBRATION

TIC Library : C:\DATABASE\NIST02.L  
TIC Integration Parameters: LSCINT.P



Data\_Path\_ : Z:\HPCHEM1\BNA\_F\DATA\BF111414\  
Data\_File\_ : BF075524.D  
Acq\_On\_ : 15\_Nov.2014\_ 6:544  
Operator\_ : TP\_/.JJJ  
Sample\_ : F4680-055  
Misc\_ :  
ALS\_Vial\_ : 25\_ Sample\_Multiplier: 11

Instrument :  
BNA\_F  
ClientSampleId :  
SVOC-GPC-BLANK

Quant\_Method\_ : Z:\HPCHEM1\BNA\_F\METHODS\8270-BF111214.MM  
Quant\_Title\_ : ASP\_BNA\_STANDARDS\_FOR\_5\_POINT\_CALIBRATIONN

TIC\_Library\_ : C:\DATABASE\NIST02.LL  
TIC\_Integration\_Parameters: LSCINT.PP

TIC Top Hit name	RT	EstConc	Units	Response	---Internal Standard---
				#	RT Resp Conc

---

No Library Search Compounds Detected

\*\*\*\*\*