

Data Path : \\74.0.250.170\SVOASRV\HPCHEM1\BNA F\DATA\BF111417\  
 Data File : BF100557.D  
 Acq On : 14 Nov 2017 21:50  
 Operator : SJ/JU  
 Sample : I6427-01 2X  
 Misc :  
 ALS Vial : 22 Sample Multiplier: 1

Instrument :  
 BNA\_F  
 ClientSampleId :  
 277-216-156-343-350-342

Quant Time: Nov 15 03:05:46 2017  
 Quant Method : Z:\HPCHEM1\BNA F\METHODS\8270-BF110817.M  
 Quant Title : ASP BNA STANDARDS FOR 5 POINT CALIBRATION  
 QLast Update : Tue Nov 14 14:17:16 2017  
 Response via : Initial Calibration

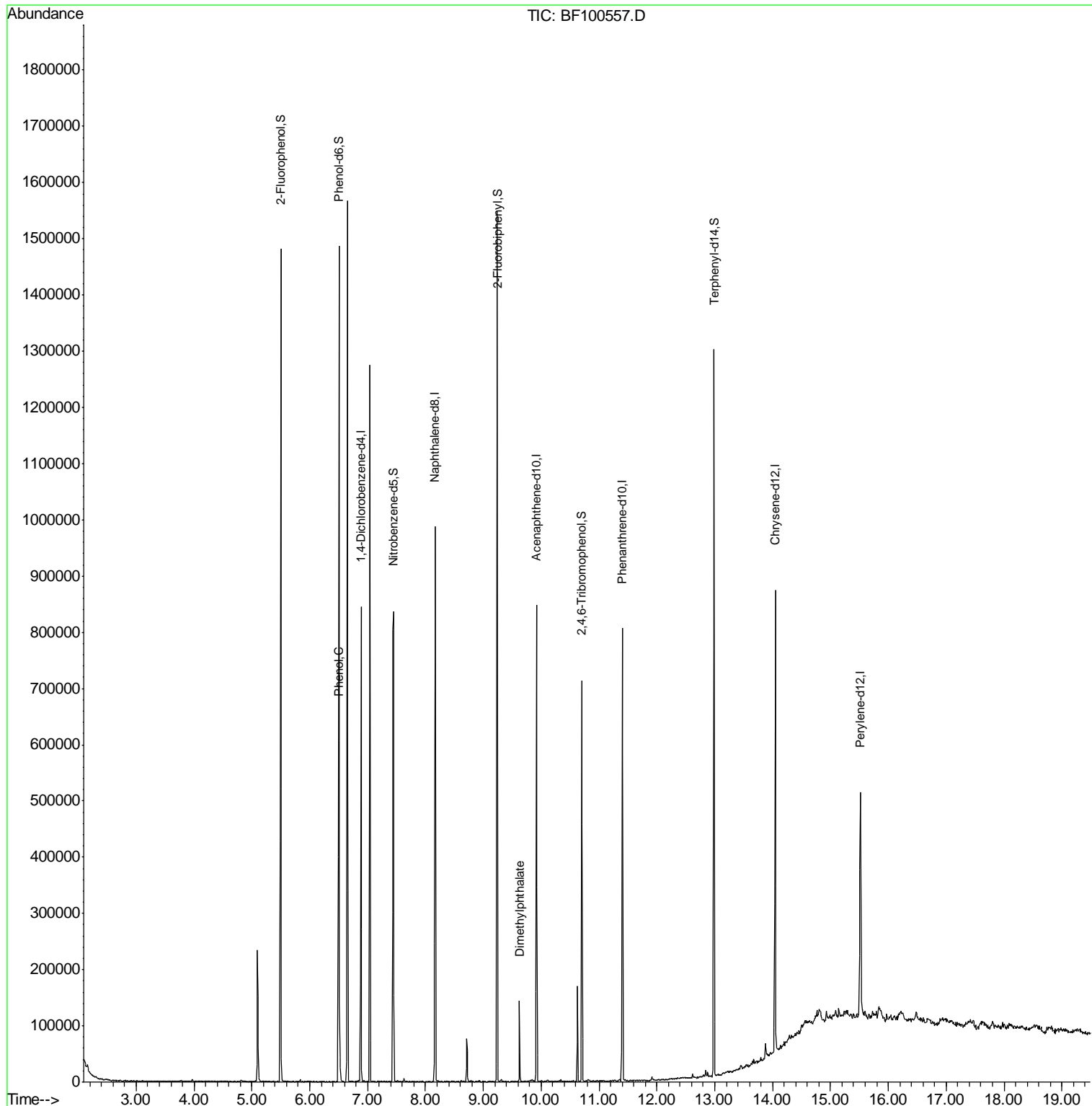
Internal Standards	R.T.	QIon	Response	Conc	Units	Dev(Min)
1) 1,4-Dichlorobenzene-d4	6.89	152	119875	20.00	ng	0.00
21) Naphthalene-d8	8.17	136	425165	20.00	ng	0.00
38) Acenaphthene-d10	9.92	164	156666	20.00	ng	0.00
63) Phenanthrene-d10	11.40	188	275084	20.00	ng	0.00
75) Chrysene-d12	14.04	240	278007	20.00	ng	0.00
86) Perylene-d12	15.52	264	187401	20.00	ng	0.00
System Monitoring Compounds						
5) 2-Fluorophenol	5.50	112	386148	51.64	ng	0.00
7) Phenol-d6	6.50	99	454829	49.32	ng	0.00
23) Nitrobenzene-d5	7.45	82	260024	40.43	ng	0.00
41) 2,4,6-Tribromophenol	10.70	330	79787	49.98	ng	0.00
44) 2-Fluorobiphenyl	9.24	172	452179	43.95	ng	0.00
78) Terphenyl-d14	12.99	244	394550	32.61	ng	0.00
Target Compounds						
10) Phenol	6.52	94	24590	2.540	ng	96
49) Dimethylphthalate	9.63	163	48977	4.094	ng	98

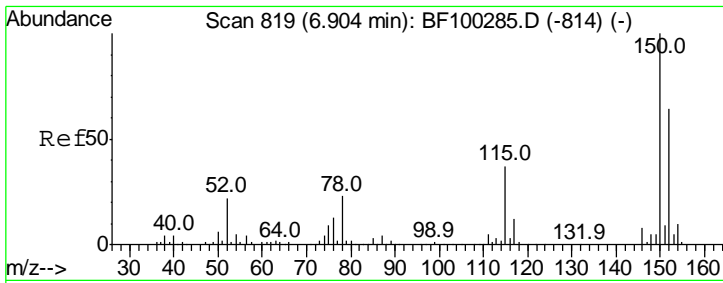
(#) = qualifier out of range (m) = manual integration (+) = signals summed

Data Path : \\74.0.250.170\SVOASRV\HPCHEM1\BNA F\DATA\BF111417\  
 Data File : BF100557.D  
 Acq On : 14 Nov 2017 21:50  
 Operator : SJ/JU  
 Sample : I6427-01 2X  
 Misc :  
 ALS Vial : 22 Sample Multiplier: 1

**Instrument :**  
 BNA\_F  
**ClientSampleId :**  
 277-216-156-343-350-342

Quant Time: Nov 15 03:05:46 2017  
 Quant Method : Z:\HPCHEM1\BNA F\METHODS\8270-BF110817.M  
 Quant Title : ASP BNA STANDARDS FOR 5 POINT CALIBRATION  
 QLast Update : Tue Nov 14 14:17:16 2017  
 Response via : Initial Calibration

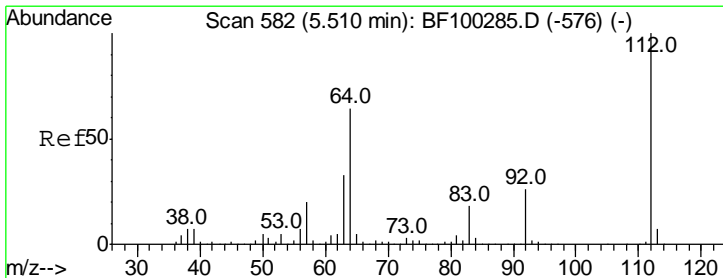
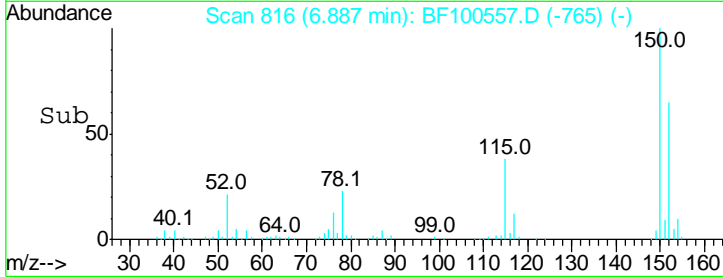
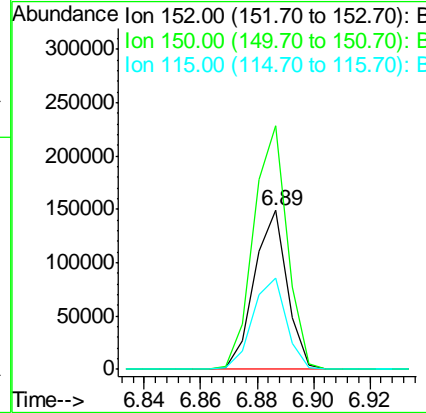
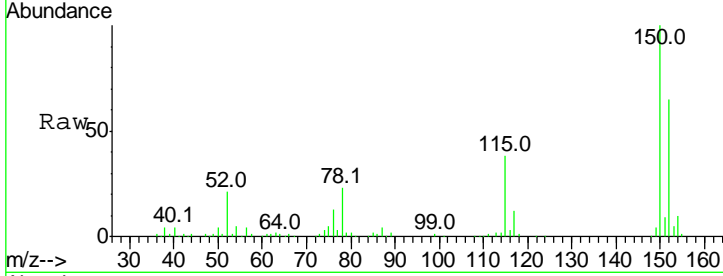




#1  
 1,4-Dichlorobenzene-d4  
 Concen: 20.000 ng  
 RT: 6.89 min Scan# 816  
 Delta R.T. 0.00 min  
 Lab File: BF100557.D  
 Acq: 14 Nov 2017 21:50

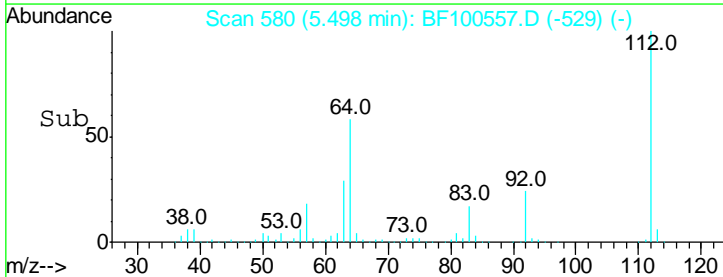
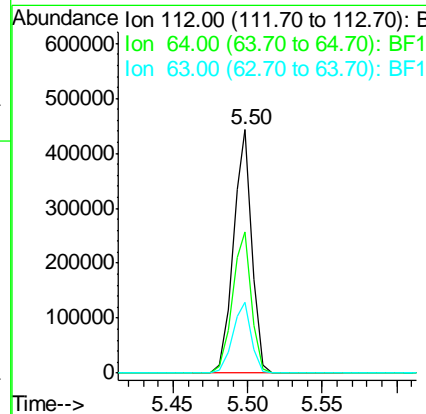
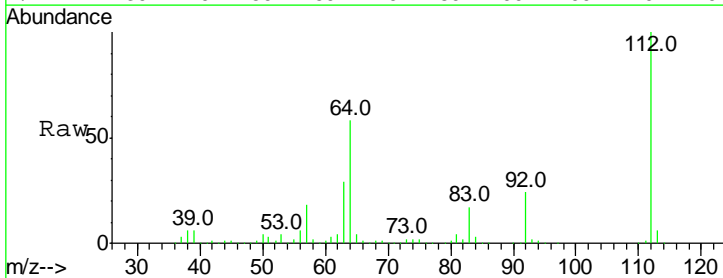
**Instrument :**  
 BNA\_F  
**ClientSampleId :**  
 277-216-156-343-350-342

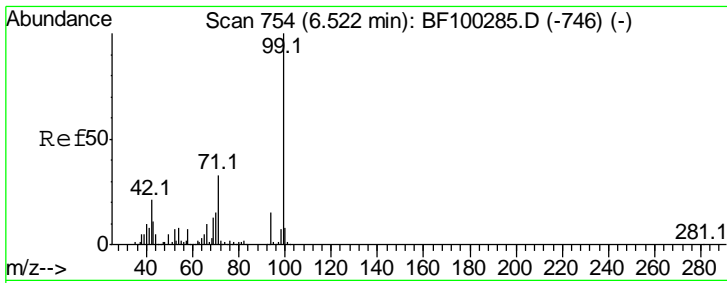
Tgt Ion	Resp	Lower	Upper
152	119875		
150	153.4	124.6	186.8
115	57.9	50.1	75.1



#5  
 2-Fluorophenol  
 Concen: 51.636 ng  
 RT: 5.50 min Scan# 580  
 Delta R.T. 0.00 min  
 Lab File: BF100557.D  
 Acq: 14 Nov 2017 21:50

Tgt Ion	Resp	Lower	Upper
112	386148		
64	58.0	47.9	71.9
63	29.0	23.7	35.5

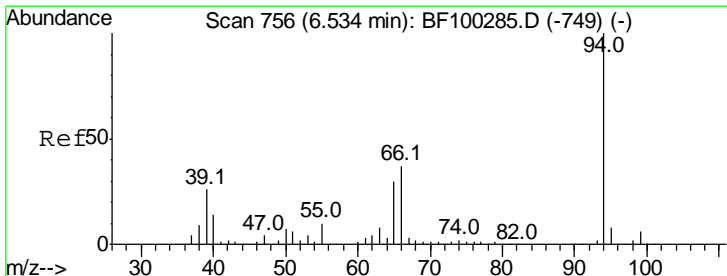
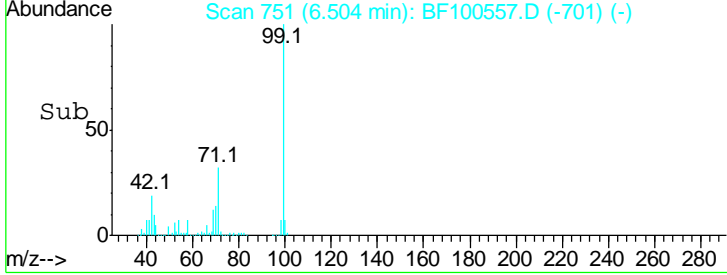
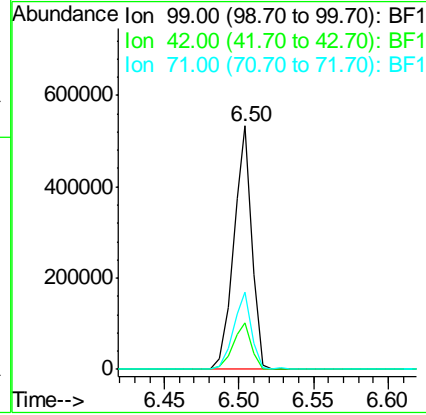
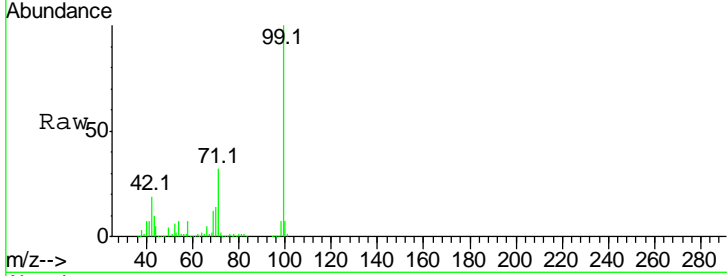




#7  
 Phenol-d6  
 Concen: 49.322 ng  
 RT: 6.50 min Scan# 751  
 Delta R.T. -0.01 min  
 Lab File: BF100557.D  
 Acq: 14 Nov 2017 21:50

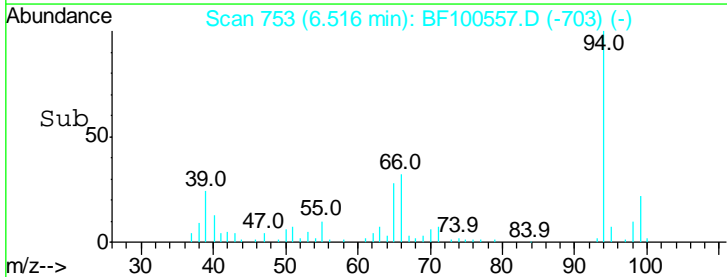
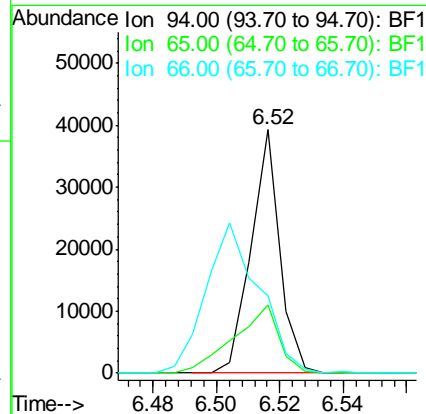
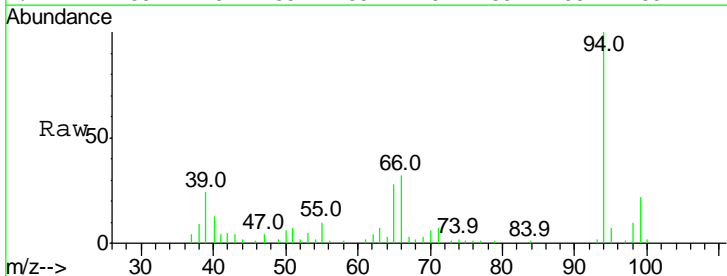
Instrument :  
 BNA\_F  
 ClientSampleId :  
 277-216-156-343-350-342

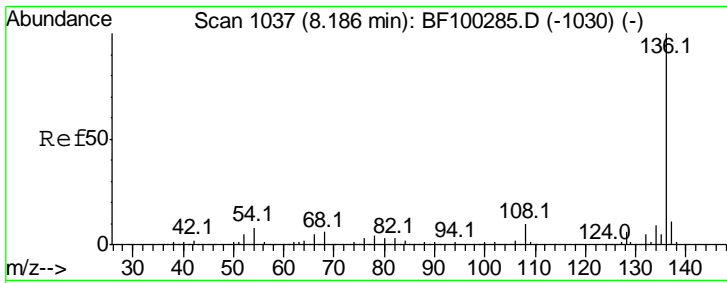
Tgt Ion	Resp	Lower	Upper
99	100		
42	19.3	14.5	21.7
71	31.9	25.4	38.0



#10  
 Phenol  
 Concen: 2.540 ng  
 RT: 6.52 min Scan# 753  
 Delta R.T. -0.01 min  
 Lab File: BF100557.D  
 Acq: 14 Nov 2017 21:50

Tgt Ion	Resp	Lower	Upper
94	100		
65	28.0	7.9	47.9
66	31.8	16.2	56.2



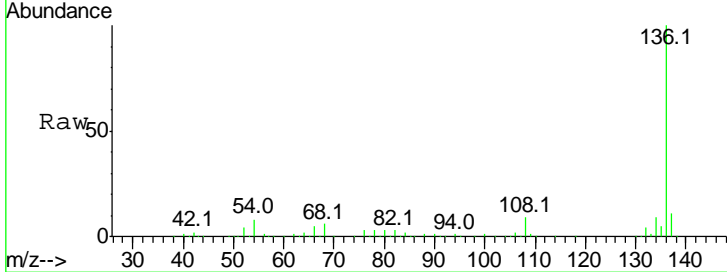


#21  
 Naphthalene-d8  
 Concen: 20.000 ng  
 RT: 8.17 min Scan# 1034  
 Delta R.T. 0.00 min  
 Lab File: BF100557.D  
 Acq: 14 Nov 2017 21:50

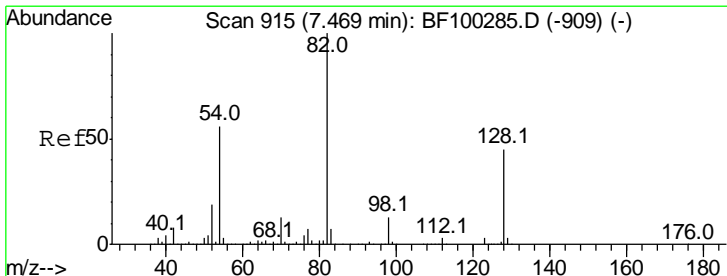
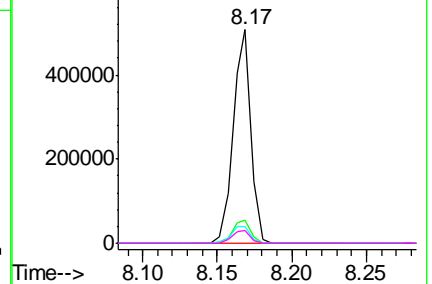
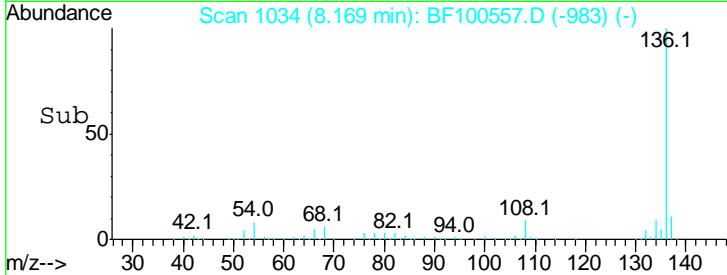
Instrument :  
 BNA\_F  
 ClientSampleId :  
 277-216-156-343-350-342

Tgt Ion: 136 Resp: 425165

Ion	Ratio	Lower	Upper
136	100		
137	10.7	8.9	13.3
54	7.8	6.6	9.8
68	5.9	5.0	7.4



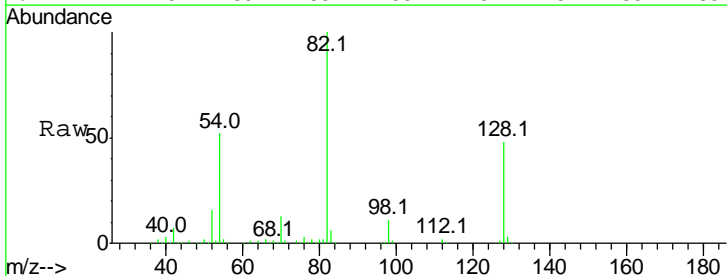
Abundance Ion 136.00 (135.70 to 136.70): E  
 Ion 137.00 (136.70 to 137.70): E  
 Ion 54.00 (53.70 to 54.70): BF1  
 Ion 68.00 (67.70 to 68.70): BF1



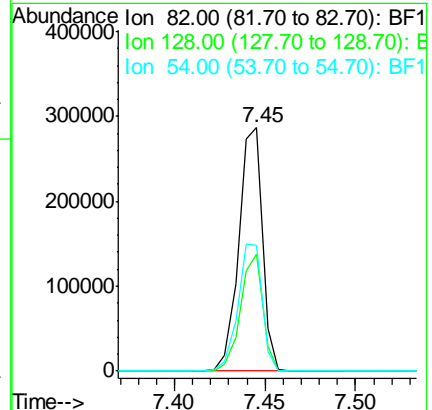
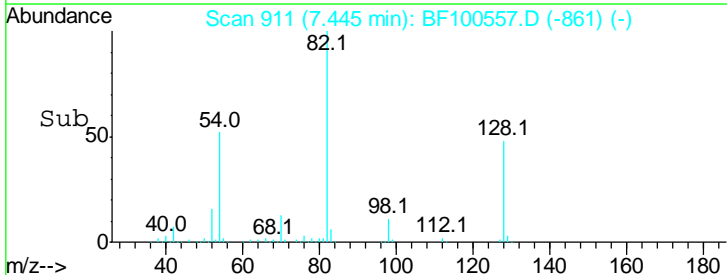
#23  
 Nitrobenzene-d5  
 Concen: 40.434 ng  
 RT: 7.45 min Scan# 911  
 Delta R.T. -0.01 min  
 Lab File: BF100557.D  
 Acq: 14 Nov 2017 21:50

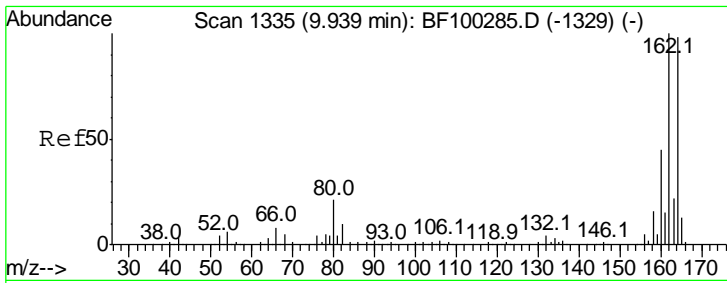
Tgt Ion: 82 Resp: 260024

Ion	Ratio	Lower	Upper
82	100		
128	48.1	36.1	54.1
54	51.6	41.4	62.2



Abundance Ion 82.00 (81.70 to 82.70): BF1  
 Ion 128.00 (127.70 to 128.70): E  
 Ion 54.00 (53.70 to 54.70): BF1

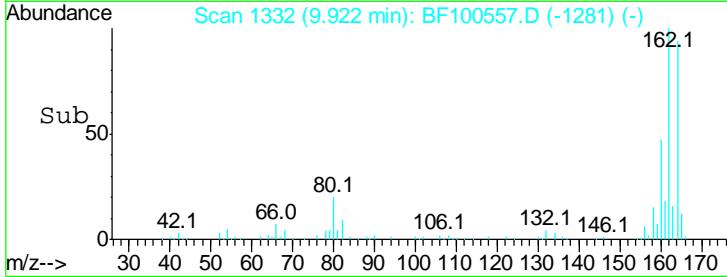
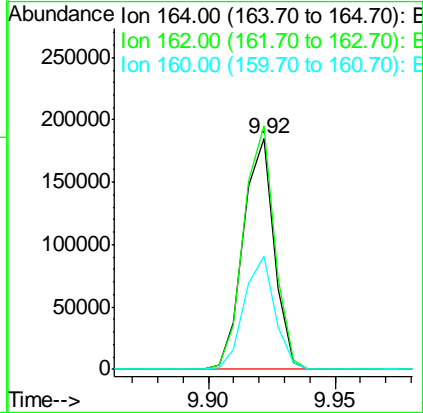
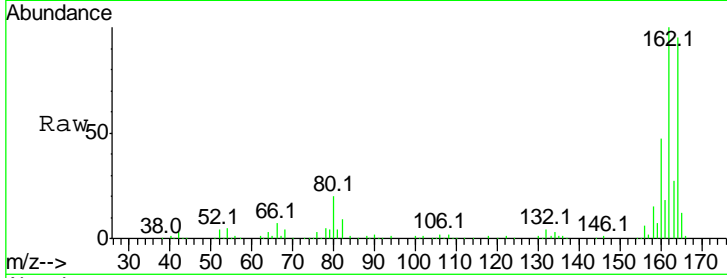




#38  
 Acenaphthene-d10  
 Concen: 20.000 ng  
 RT: 9.92 min Scan# 1332  
 Delta R.T. 0.00 min  
 Lab File: BF100557.D  
 Acq: 14 Nov 2017 21:50

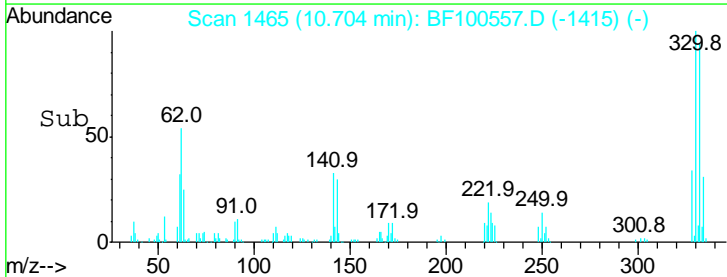
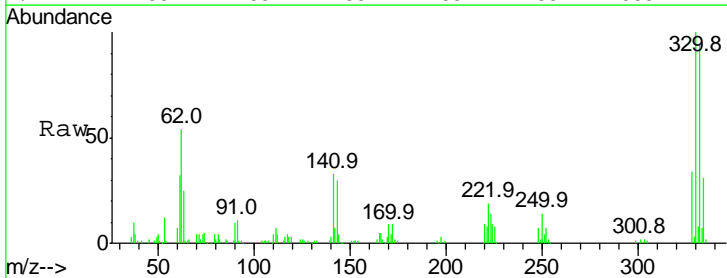
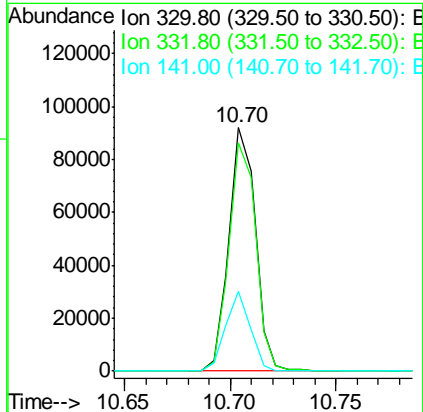
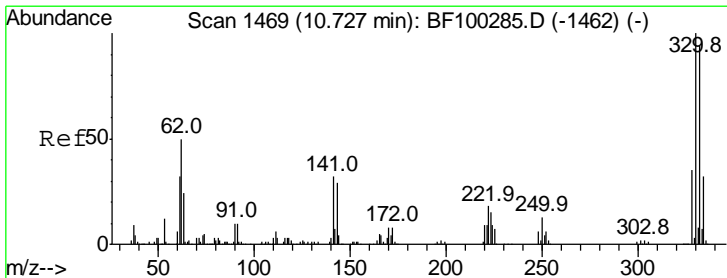
Instrument :  
 BNA\_F  
 ClientSampleId :  
 277-216-156-343-350-342

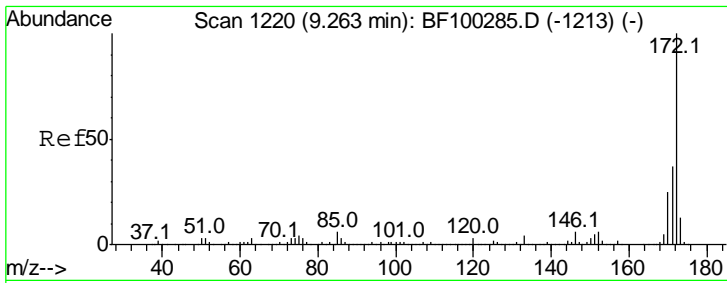
Tgt Ion	Resp	Lower	Upper
164	100		
162	105.5	86.1	129.1
160	49.2	38.3	57.5



#41  
 2,4,6-Tribromophenol  
 Concen: 49.978 ng  
 RT: 10.70 min Scan# 1465  
 Delta R.T. -0.01 min  
 Lab File: BF100557.D  
 Acq: 14 Nov 2017 21:50

Tgt Ion	Resp	Lower	Upper
330	100		
332	94.9	77.0	115.6
141	30.2	29.9	44.9



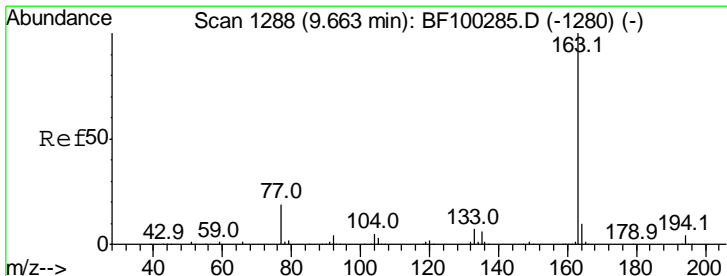
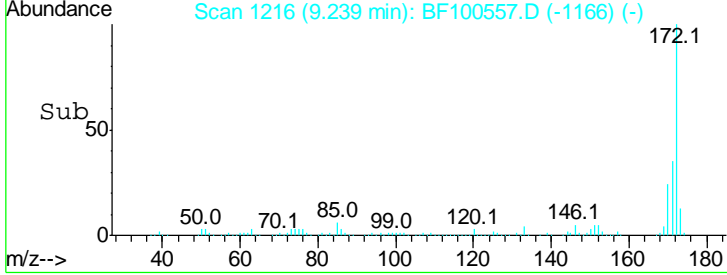
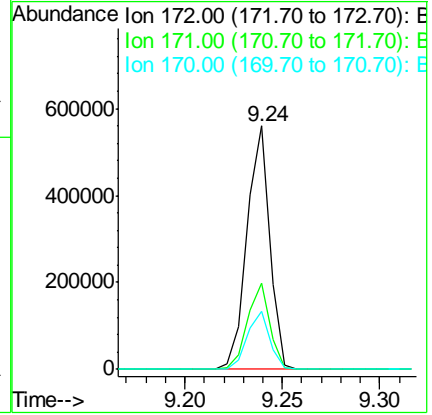
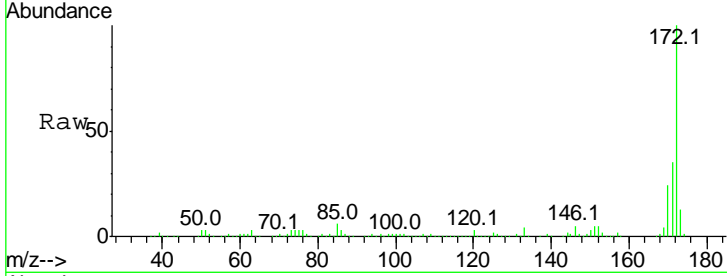


#44  
 2-Fluorobiphenyl  
 Concen: 43.949 ng  
 RT: 9.24 min Scan# 1216  
 Delta R.T. -0.01 min  
 Lab File: BF100557.D  
 Acq: 14 Nov 2017 21:50

Instrument :  
 BNA\_F  
 ClientSampleId :  
 277-216-156-343-350-342

Tgt Ion:172 Resp: 452179

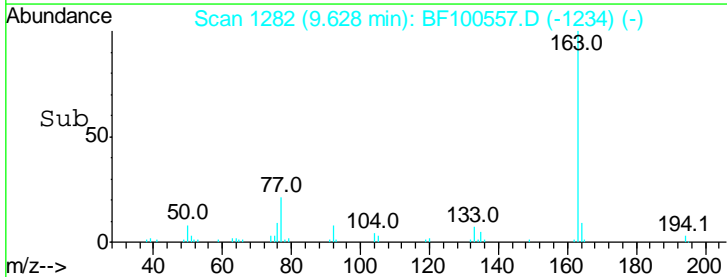
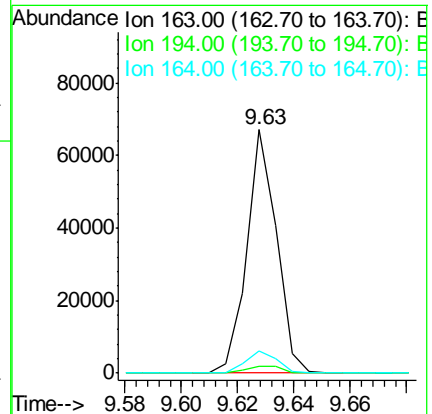
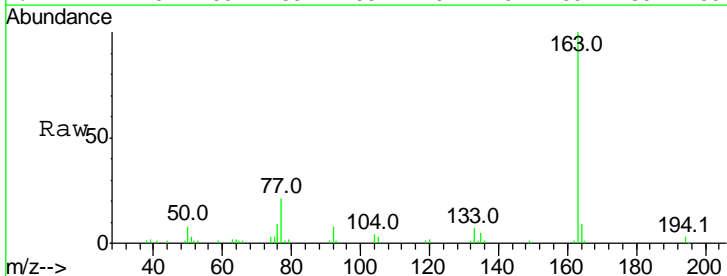
Ion	Ratio	Lower	Upper
172	100		
171	35.4	29.7	44.5
170	23.9	19.6	29.4

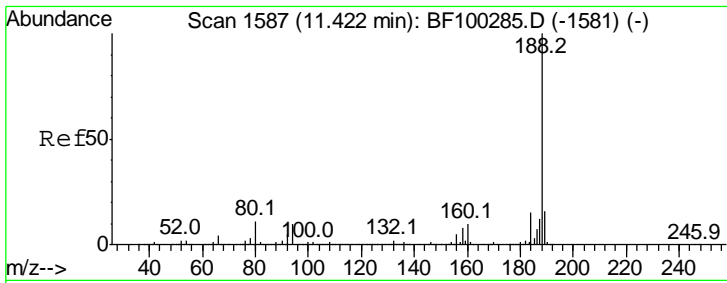


#49  
 Dimethylphthalate  
 Concen: 4.094 ng  
 RT: 9.63 min Scan# 1282  
 Delta R.T. -0.02 min  
 Lab File: BF100557.D  
 Acq: 14 Nov 2017 21:50

Tgt Ion:163 Resp: 48977

Ion	Ratio	Lower	Upper
163	100		
194	2.8	2.7	4.1
164	9.3	8.2	12.2

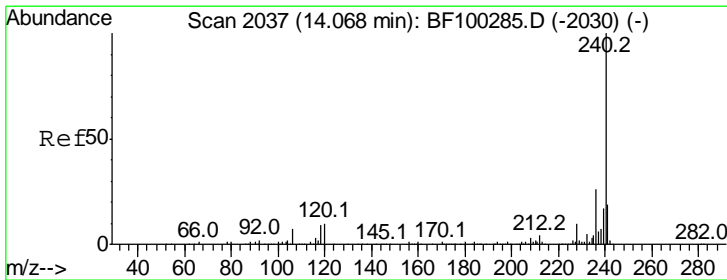
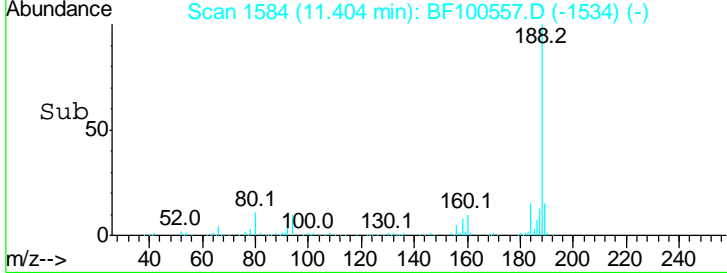
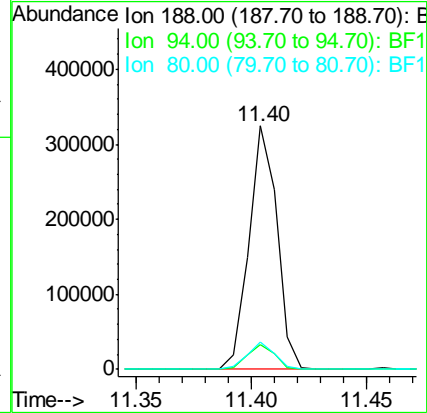
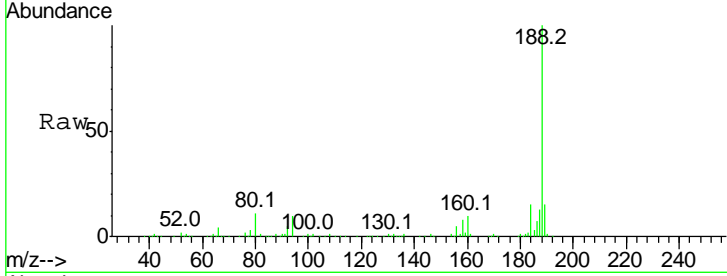




#63  
 Phenanthrene-d10  
 Concen: 20.000 ng  
 RT: 11.40 min Scan# 1584  
 Delta R.T. -0.01 min  
 Lab File: BF100557.D  
 Acq: 14 Nov 2017 21:50

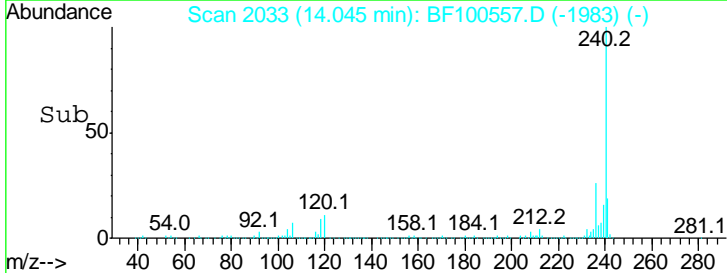
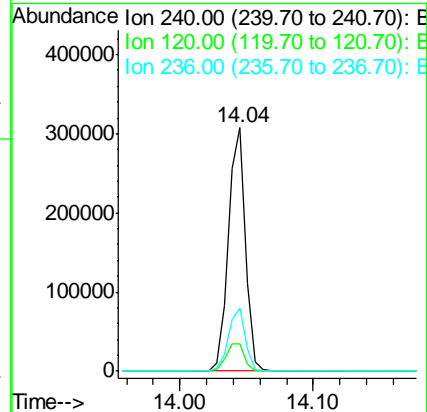
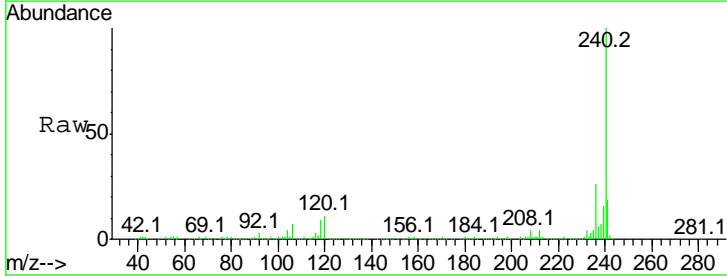
Instrument :  
 BNA\_F  
 ClientSampleId :  
 277-216-156-343-350-342

Tgt Ion	Resp	Lower	Upper
188	100		
94	10.3	8.5	12.7
80	11.3	9.2	13.8

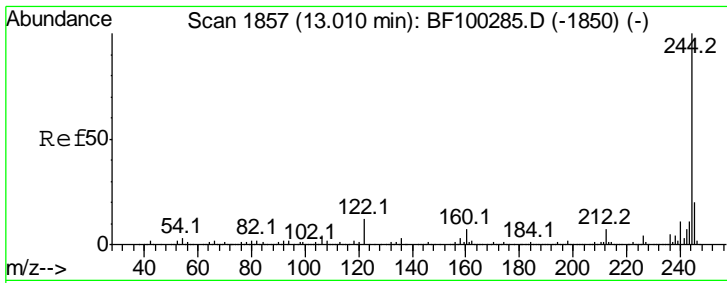


#75  
 Chrysene-d12  
 Concen: 20.000 ng  
 RT: 14.04 min Scan# 2033  
 Delta R.T. -0.01 min  
 Lab File: BF100557.D  
 Acq: 14 Nov 2017 21:50

Tgt Ion	Resp	Lower	Upper
240	100		
120	11.0	9.5	14.3
236	25.9	20.7	31.1



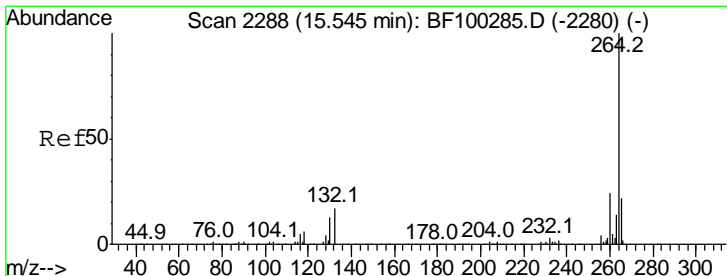
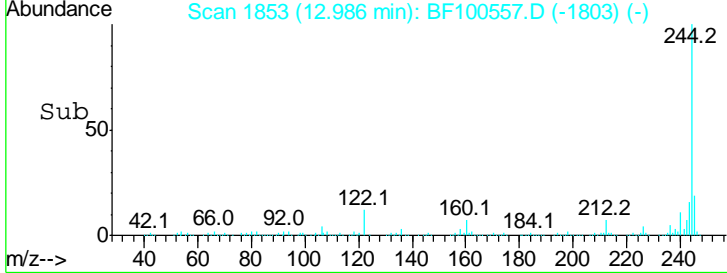
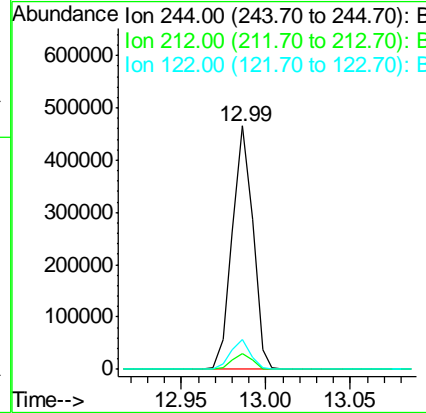
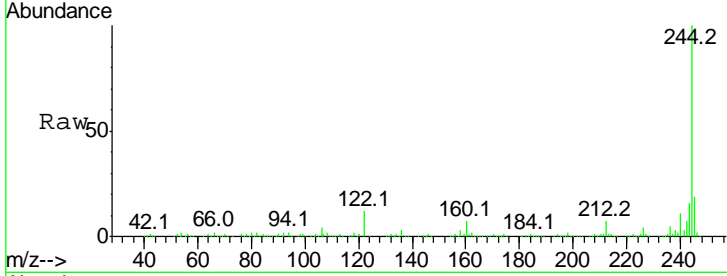




#78  
 Terphenyl-d14  
 Concen: 32.609 ng  
 RT: 12.99 min Scan# 1853  
 Delta R.T. -0.01 min  
 Lab File: BF100557.D  
 Acq: 14 Nov 2017 21:50

Instrument :  
 BNA\_F  
 ClientSampleId :  
 277-216-156-343-350-342

Tgt Ion	Ratio	Lower	Upper
244	100		
212	6.7	5.4	8.0
122	12.0	11.0	16.4



#86  
 Perylene-d12  
 Concen: 20.000 ng  
 RT: 15.52 min Scan# 2283  
 Delta R.T. -0.01 min  
 Lab File: BF100557.D  
 Acq: 14 Nov 2017 21:50

Tgt Ion	Ratio	Lower	Upper
264	100		
260	23.8	19.2	28.8
265	22.0	17.5	26.3

