

Data Path : Z:\svoasrv\HPCHEM1\BNA_F\Data\BF111422\
 Data File : BF131221.D
 Acq On : 14 Nov 2022 12:33
 Operator : CG\JU
 Sample : SSTDICC005
 Misc :
 ALS Vial : 3 Sample Multiplier: 1

Instrument :
 BNA_F
 ClientSampleId :
 SSTDICC005

Quant Time: Nov 15 03:26:36 2022
 Quant Method : Z:\svoasrv\HPCHEM1\BNA_F\Methods\8270-BF111422.M
 Quant Title : ASP BNA STANDARDS FOR 5 POINT CALIBRATION
 QLast Update : Tue Nov 15 03:24:29 2022
 Response via : Initial Calibration

Compound	R.T.	QIon	Response	Conc	Units	Dev(Min)
Internal Standards						
1) 1,4-Dichlorobenzene-d4	6.804	152	58214	20.000	ng	0.00
21) Naphthalene-d8	8.092	136	230446	20.000	ng	0.00
39) Acenaphthene-d10	9.851	164	130318	20.000	ng	0.00
64) Phenanthrene-d10	11.339	188	315189	20.000	ng	0.00
76) Chrysene-d12	13.986	240	199388	20.000	ng	0.00
86) Perylene-d12	15.451	264	154427	20.000	ng	0.00
System Monitoring Compounds						
5) 2-Fluorophenol	5.416	112	41040	10.785	ng	0.00
7) Phenol-d6	6.434	99	47337	9.994	ng	-0.01
23) Nitrobenzene-d5	7.369	82	52323	9.741	ng	-0.01
42) 2,4,6-Tribromophenol	10.639	330	13381	10.367	ng	0.00
45) 2-Fluorobiphenyl	9.163	172	100286	10.687	ng	-0.01
79) Terphenyl-d14	12.921	244	110242	9.486	ng	-0.01
Target Compounds						
2) 1,4-Dioxane	2.516	88	9556	5.817	ng	98
3) Pyridine	3.275	79	29736	6.473	ng	94
4) n-Nitrosodimethylamine	3.204	42	19111	6.126	ng	# 95
6) Aniline	6.469	93	29137	4.929	ng	99
8) 2-Chlorophenol	6.592	128	20909	5.312	ng	97
9) Benzaldehyde	6.357	77	18072	6.620	ng	93
10) Phenol	6.451	94	28201	5.043	ng	90
11) bis(2-Chloroethyl)ether	6.539	93	20621	5.129	ng	97
12) 1,3-Dichlorobenzene	6.745	146	22948	5.194	ng	97
13) 1,4-Dichlorobenzene	6.822	146	23780	5.084	ng	98
14) 1,2-Dichlorobenzene	6.975	146	23311	5.687	ng	97
15) Benzyl Alcohol	6.951	79	14484	4.500	ng	# 86
16) 2,2'-oxybis(1-Chloropr...	7.081	45	37433	5.147	ng	96
17) 2-Methylphenol	7.057	107	17875	5.070	ng	95
18) Hexachloroethane	7.316	117	9266	4.911	ng	91
19) n-Nitroso-di-n-propyla...	7.210	70	16911	5.189	ng	96
20) 3+4-Methylphenols	7.216	107	24211	5.612	ng	92
22) Acetophenone	7.216	105	31505	5.090	ng	98
24) Nitrobenzene	7.386	77	26026	4.868	ng	99
25) Isophorone	7.628	82	40933	4.699	ng	98
26) 2-Nitrophenol	7.710	139	10301	4.495	ng	97
27) 2,4-Dimethylphenol	7.745	122	15356	4.461	ng	97
28) bis(2-Chloroethoxy)met...	7.839	93	23699	5.135	ng	99
29) 2,4-Dichlorophenol	7.951	162	18076	5.052	ng	95
30) 1,2,4-Trichlorobenzene	8.033	180	20057	4.949	ng	97
31) Naphthalene	8.110	128	66078	5.250	ng	99
32) Benzoic acid	7.845	122	3269	1.956	ng	# 74
33) 4-Chloroaniline	8.163	127	25451	5.203	ng	99
34) Hexachlorobutadiene	8.228	225	13862	4.941	ng	95
35) Caprolactam	8.504	113	5374	5.055	ng	# 78
36) 4-Chloro-3-methylphenol	8.645	107	20394	4.882	ng	99
37) 2-Methylnaphthalene	8.804	142	41132	5.196	ng	93
38) 1-Methylnaphthalene	8.904	142	40412	5.355	ng	99
40) 1,2,4,5-Tetrachloroben...	8.969	216	21102	5.117	ng	99
41) Hexachlorocyclopentadiene	8.951	237	716	0.703	ng	89
43) 2,4,6-Trichlorophenol	9.086	196	12074	4.797	ng	99

Data Path : Z:\svoasrv\HPCHEM1\BNA_F\Data\BF111422\
 Data File : BF131221.D
 Acq On : 14 Nov 2022 12:33
 Operator : CG\JU
 Sample : SSTDICC005
 Misc :
 ALS Vial : 3 Sample Multiplier: 1

Instrument :
 BNA_F
 ClientSampleId :
 SSTDICC005

Quant Time: Nov 15 03:26:36 2022
 Quant Method : Z:\svoasrv\HPCHEM1\BNA_F\Methods\8270-BF111422.M
 Quant Title : ASP BNA STANDARDS FOR 5 POINT CALIBRATION
 QLast Update : Tue Nov 15 03:24:29 2022
 Response via : Initial Calibration

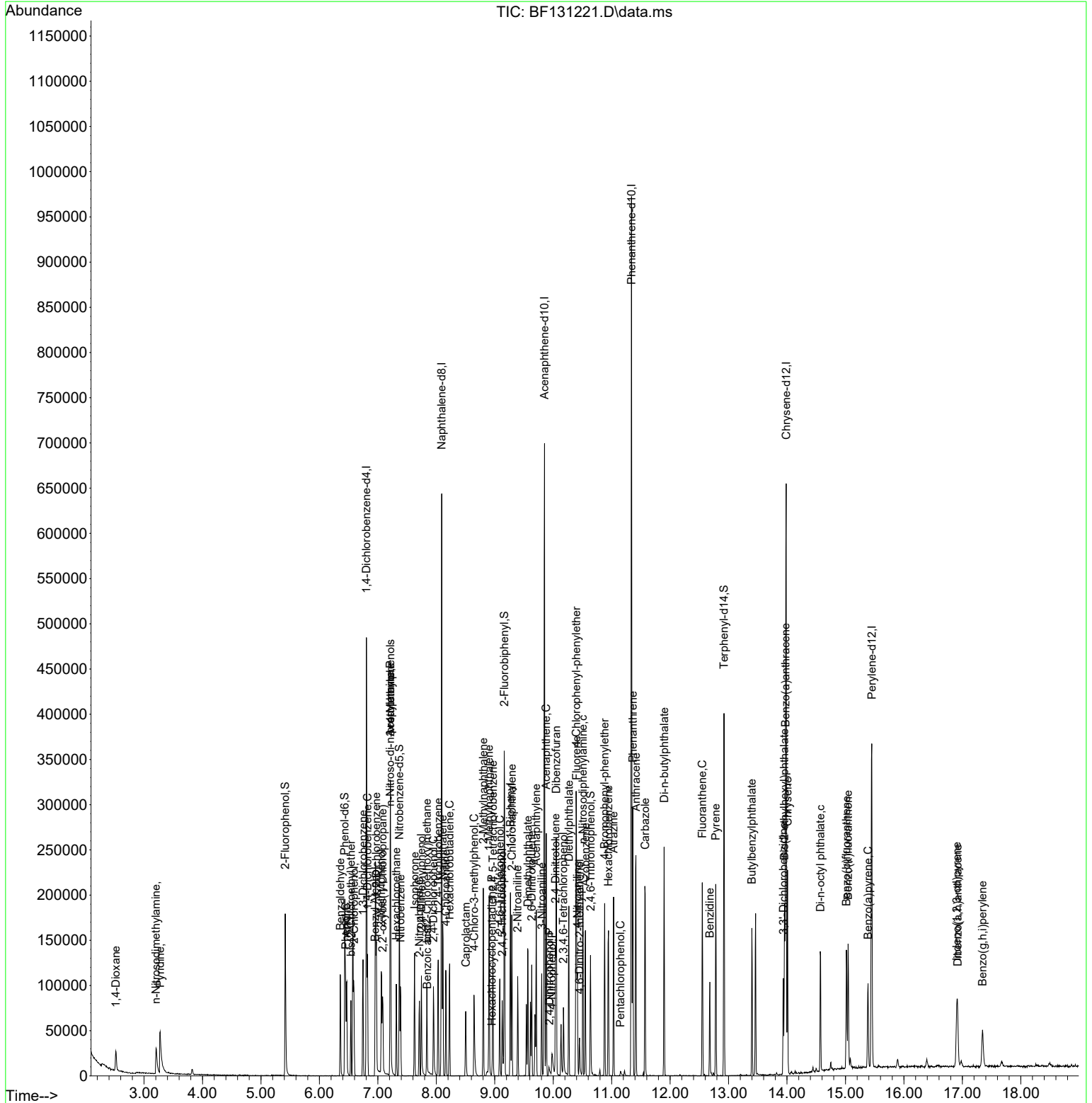
Compound	R.T.	QIon	Response	Conc	Units	Dev(Min)
44) 2,4,5-Trichlorophenol	9.127	196	12389	4.590	ng	99
46) 1,1'-Biphenyl	9.269	154	51901	5.300	ng	96
47) 2-Chloronaphthalene	9.292	162	40738	5.070	ng	97
48) 2-Nitroaniline	9.392	65	15068	4.888	ng	97
49) Acenaphthylene	9.710	152	63764	5.222	ng	99
50) Dimethylphthalate	9.569	163	49783	5.079	ng	99
51) 2,6-Dinitrotoluene	9.633	165	10216	4.725	ng	92
52) Acenaphthene	9.880	154	48097	6.200	ng	99
53) 3-Nitroaniline	9.804	138	10881	4.751	ng	94
54) 2,4-Dinitrophenol	9.933	184	1958	2.163	ng	84
55) Dibenzofuran	10.051	168	79926	6.795	ng	97
56) 4-Nitrophenol	9.980	139	5214	4.276	ng	87
57) 2,4-Dinitrotoluene	10.039	165	15926	5.741	ng	93
58) Fluorene	10.398	166	57691	5.789	ng	99
59) 2,3,4,6-Tetrachlorophenol	10.174	232	11267	4.622	ng	# 93
60) Diethylphthalate	10.269	149	56687	5.416	ng	99
61) 4-Chlorophenyl-phenyle...	10.392	204	24442	5.249	ng	88
62) 4-Nitroaniline	10.416	138	13556	5.396	ng	92
63) Azobenzene	10.551	77	50199	4.659	ng	99
65) 4,6-Dinitro-2-methylph...	10.451	198	5928	2.483	ng	92
66) n-Nitrosodiphenylamine	10.510	169	47291	3.879	ng	99
67) 4-Bromophenyl-phenylether	10.880	248	17866	4.794	ng	95
68) Hexachlorobenzene	10.945	284	18848	4.615	ng	96
69) Atrazine	11.033	200	17202	4.936	ng	95
70) Pentachlorophenol	11.151	266	1515	1.257	ng	99
71) Phenanthrene	11.363	178	92980	5.118	ng	98
72) Anthracene	11.416	178	92040	5.288	ng	100
73) Carbazole	11.574	167	80086	4.808	ng	98
74) Di-n-butylphthalate	11.898	149	101745	4.957	ng	99
75) Fluoranthene	12.551	202	75623	3.945	ng	99
77) Benzidine	12.680	184	36984	7.391	ng	97
78) Pyrene	12.780	202	77827	4.592	ng	99
80) Butylbenzylphthalate	13.398	149	31981	4.707	ng	95
81) Benzo(a)anthracene	13.974	228	72091	5.088	ng	99
82) 3,3'-Dichlorobenzidine	13.939	252	22663	5.495	ng	# 96
83) Chrysene	14.010	228	68257	5.054	ng	98
84) Bis(2-ethylhexyl)phtha...	13.957	149	40779	4.720	ng	96
85) Di-n-octyl phthalate	14.574	149	58759	4.674	ng	99
87) Indeno(1,2,3-cd)pyrene	16.903	276	42149	3.976	ng	97
88) Benzo(b)fluoranthene	15.015	252	56580	5.000	ng	99
89) Benzo(k)fluoranthene	15.045	252	53560	5.034	ng	99
90) Benzo(a)pyrene	15.386	252	42442	4.793	ng	98
91) Dibenzo(a,h)anthracene	16.921	278	35068	4.042	ng	98
92) Benzo(g,h,i)perylene	17.345	276	31713	3.530	ng	98

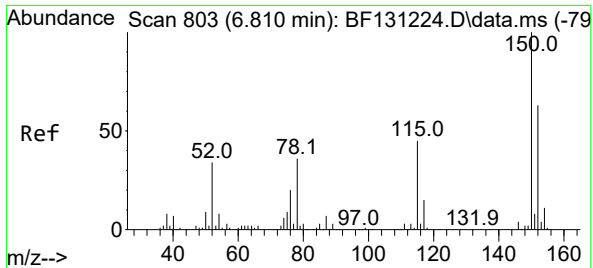
(#) = qualifier out of range (m) = manual integration (+) = signals summed

Data Path : Z:\svoasrv\HPCHEM1\BNA_F\Data\BF111422\
 Data File : BF131221.D
 Acq On : 14 Nov 2022 12:33
 Operator : CG\JU
 Sample : SSTDICC005
 Misc :
 ALS Vial : 3 Sample Multiplier: 1

Instrument :
 BNA_F
 ClientSampleId :
 SSTDICC005

Quant Time: Nov 15 03:26:36 2022
 Quant Method : Z:\svoasrv\HPCHEM1\BNA_F\Methods\8270-BF111422.M
 Quant Title : ASP BNA STANDARDS FOR 5 POINT CALIBRATION
 QLast Update : Tue Nov 15 03:24:29 2022
 Response via : Initial Calibration



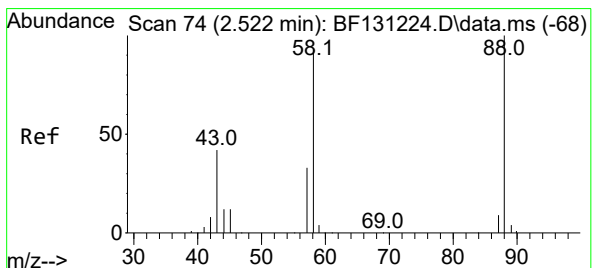
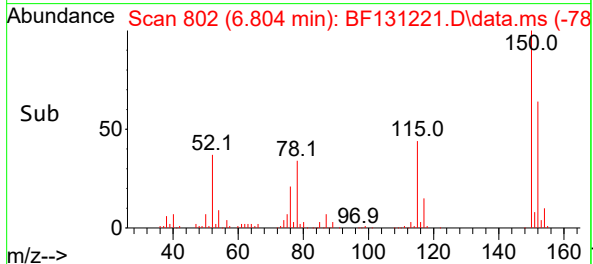
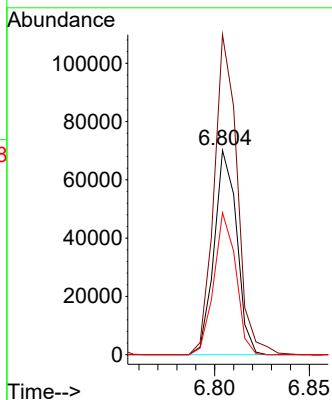
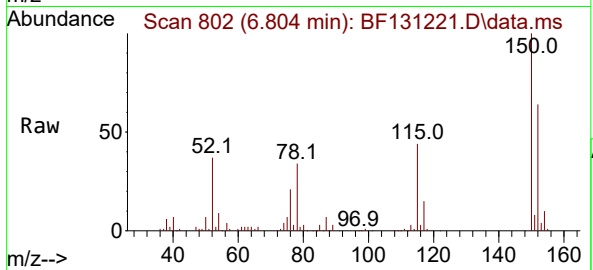


#1
 1,4-Dichlorobenzene-d4
 Concen: 20.000 ng
 RT: 6.804 min Scan# 80
 Delta R.T. -0.006 min
 Lab File: BF131221.D
 Acq: 14 Nov 2022 12:33

Instrument : BNA_F
 ClientSampleId : SSTDICC005

Tgt Ion: 152 Resp: 58214

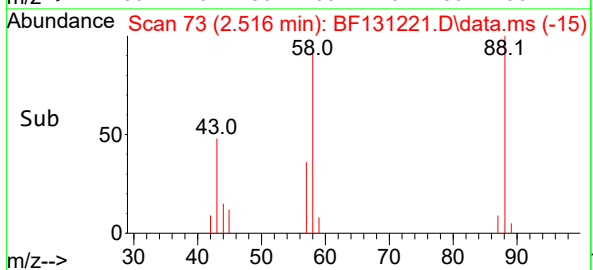
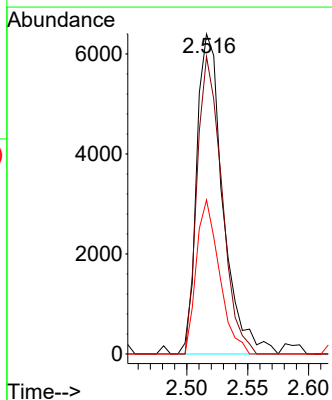
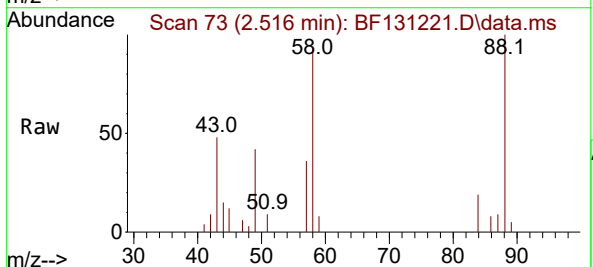
Ion	Ratio	Lower	Upper
152	100		
150	156.6	126.2	189.2
115	69.5	56.8	85.2

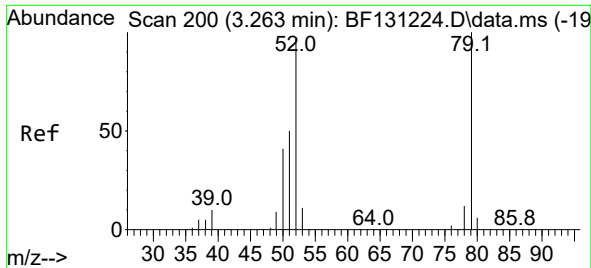


#2
 1,4-Dioxane
 Concen: 5.817 ng
 RT: 2.516 min Scan# 73
 Delta R.T. -0.006 min
 Lab File: BF131221.D
 Acq: 14 Nov 2022 12:33

Tgt Ion: 88 Resp: 9556

Ion	Ratio	Lower	Upper
88	100		
58	87.5	72.7	109.1
43	42.4	33.8	50.8

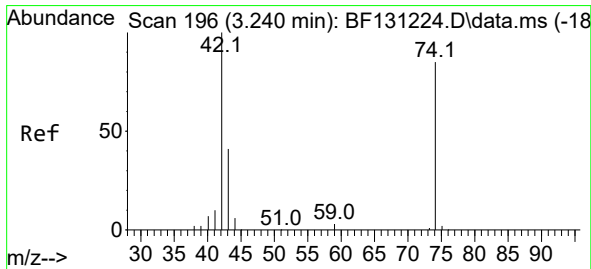
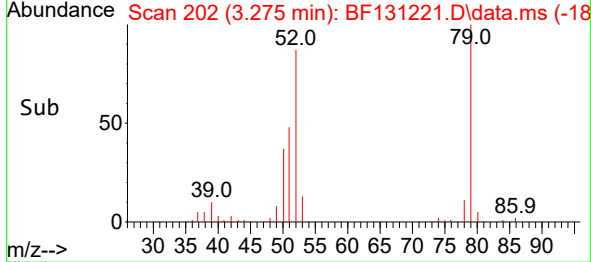
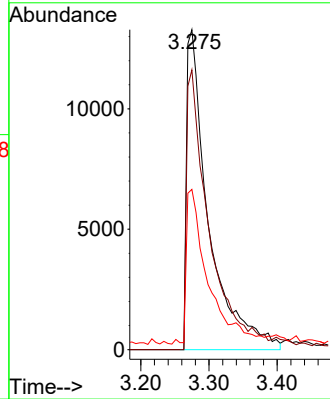
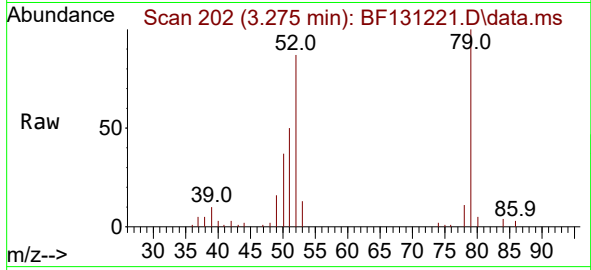




#3
 Pyridine
 Concen: 6.473 ng
 RT: 3.275 min Scan# 20
 Delta R.T. 0.012 min
 Lab File: BF131221.D
 Acq: 14 Nov 2022 12:33

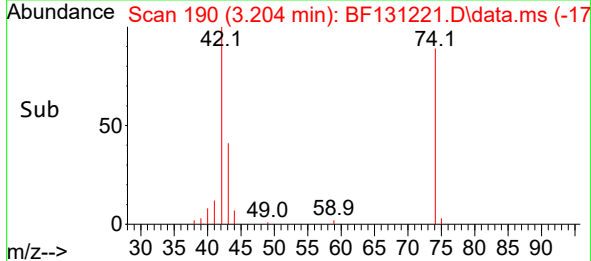
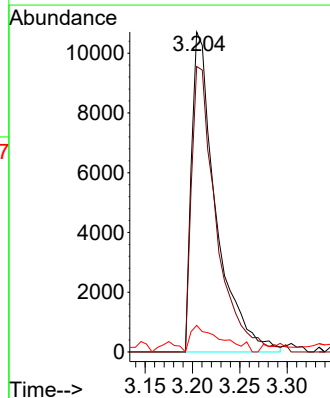
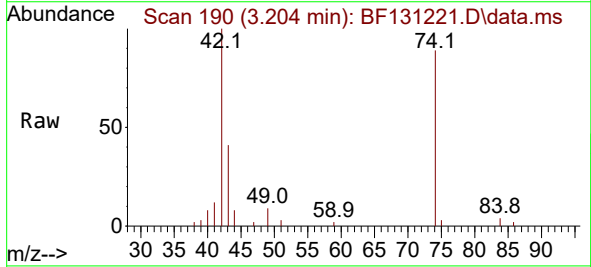
Instrument :
 BNA_F
 ClientSampleId :
 SSTDICC005

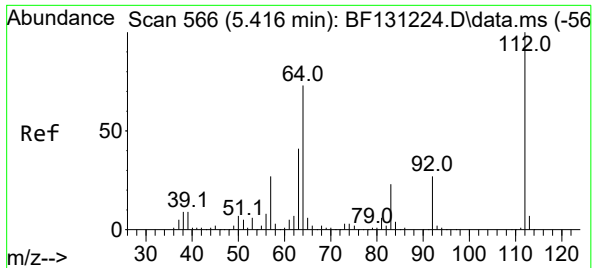
Tgt Ion	Resp	Lower	Upper
79	100		
52	87.5	77.5	116.3
51	50.1	40.3	60.5



#4
 n-Nitrosodimethylamine
 Concen: 6.126 ng
 RT: 3.204 min Scan# 190
 Delta R.T. -0.036 min
 Lab File: BF131221.D
 Acq: 14 Nov 2022 12:33

Tgt Ion	Resp	Lower	Upper
42	100		
74	89.2	68.0	102.0
44	8.3	4.8	7.2



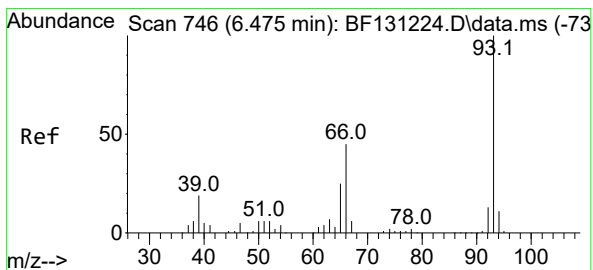
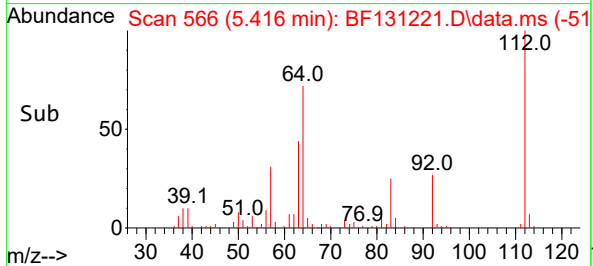
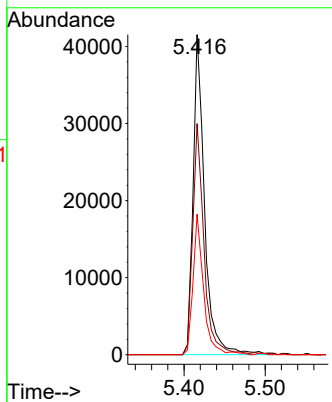
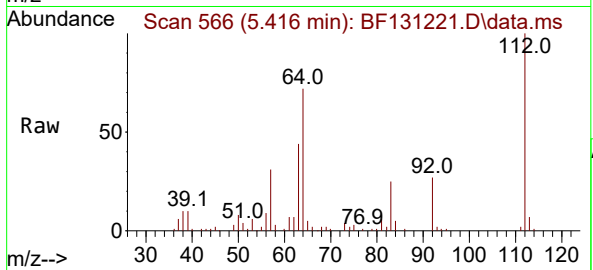


#5
 2-Fluorophenol
 Concen: 10.785 ng
 RT: 5.416 min Scan# 50
 Delta R.T. -0.000 min
 Lab File: BF131221.D
 Acq: 14 Nov 2022 12:33

Instrument : BNA_F
 ClientSampleId : SSTDICC005

Tgt Ion: 112 Resp: 41040

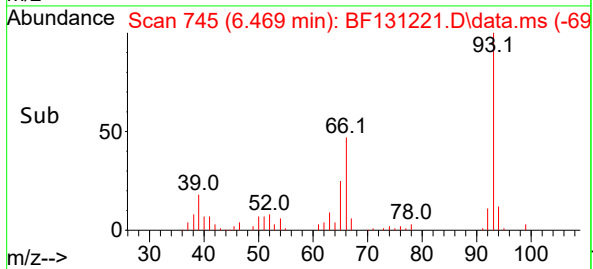
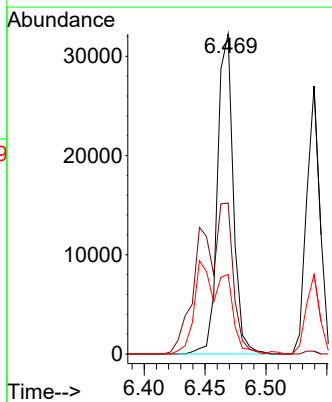
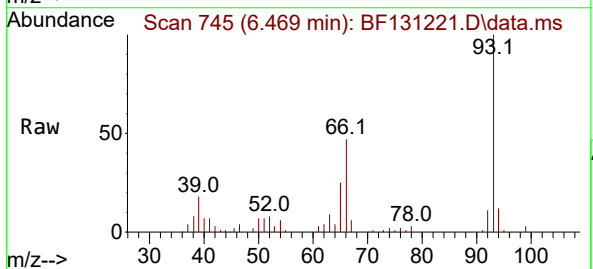
Ion	Ratio	Lower	Upper
112	100		
64	72.2	58.6	87.8
63	43.9	32.6	49.0

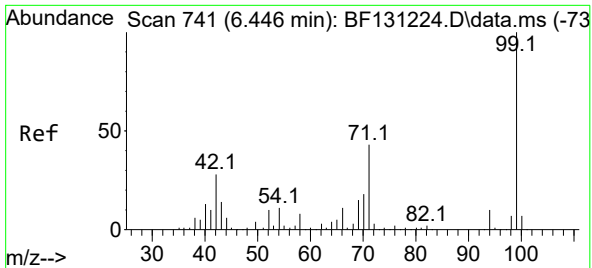


#6
 Aniline
 Concen: 4.929 ng
 RT: 6.469 min Scan# 745
 Delta R.T. -0.006 min
 Lab File: BF131221.D
 Acq: 14 Nov 2022 12:33

Tgt Ion: 93 Resp: 29137

Ion	Ratio	Lower	Upper
93	100		
66	47.1	37.0	55.6
65	24.8	20.6	30.8



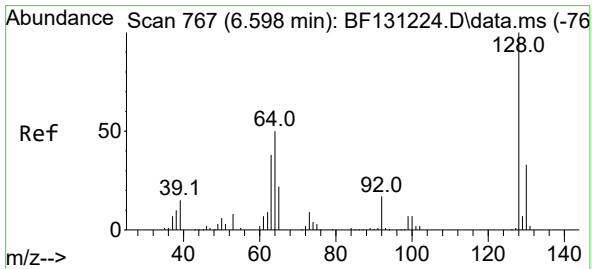
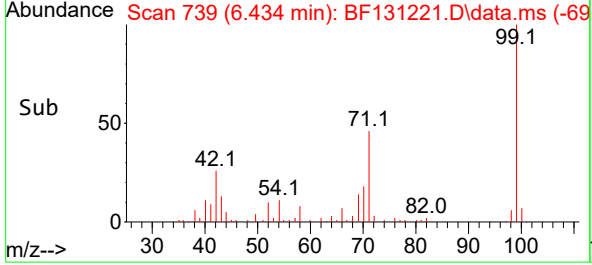
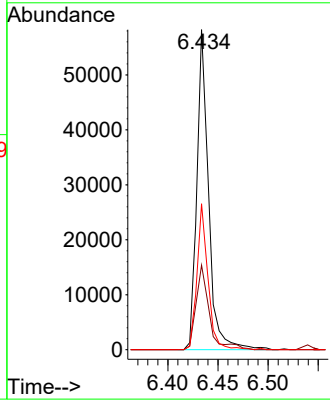
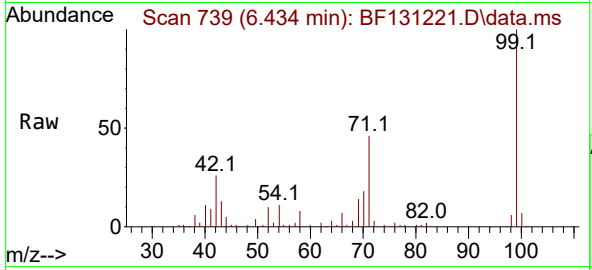


#7
 Phenol-d6
 Concen: 9.994 ng
 RT: 6.434 min Scan# 711
 Delta R.T. -0.012 min
 Lab File: BF131221.D
 Acq: 14 Nov 2022 12:33

Instrument : BNA_F
 Client Sample Id : SSTDICC005

Tgt Ion: 99 Resp: 47337

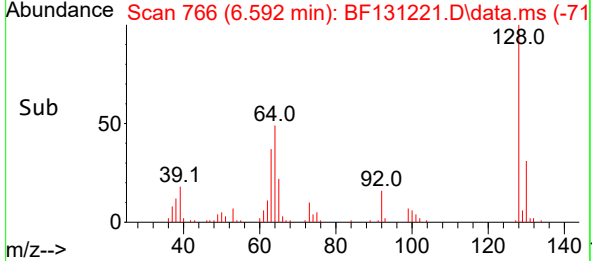
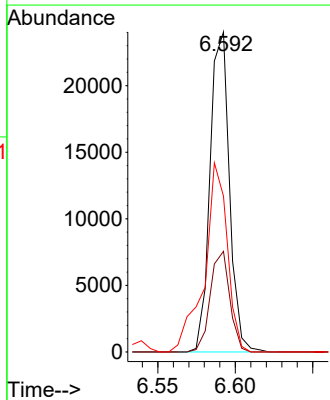
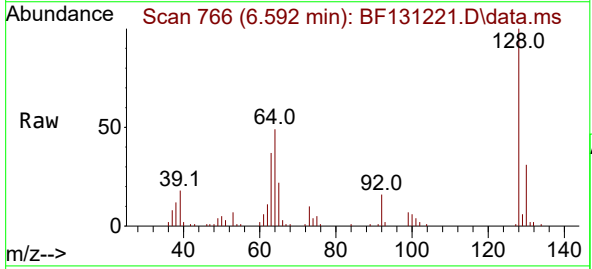
Ion	Ratio	Lower	Upper
99	100		
42	26.4	22.5	33.7
71	45.6	34.5	51.7

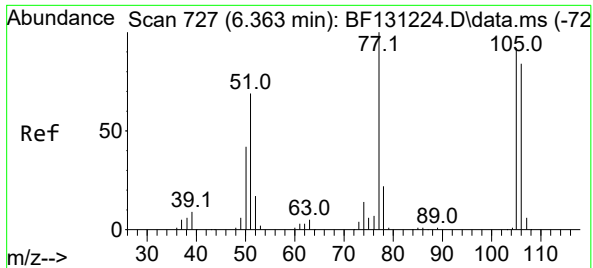


#8
 2-Chlorophenol
 Concen: 5.312 ng
 RT: 6.592 min Scan# 766
 Delta R.T. -0.006 min
 Lab File: BF131221.D
 Acq: 14 Nov 2022 12:33

Tgt Ion: 128 Resp: 20909

Ion	Ratio	Lower	Upper
128	100		
130	31.4	12.6	52.6
64	48.7	31.8	71.8

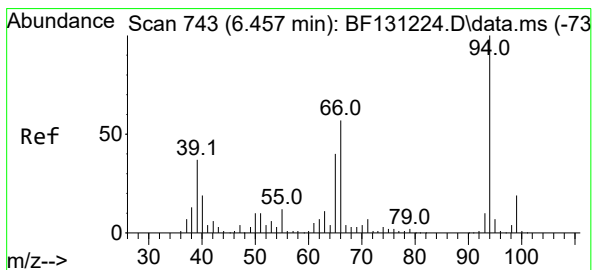
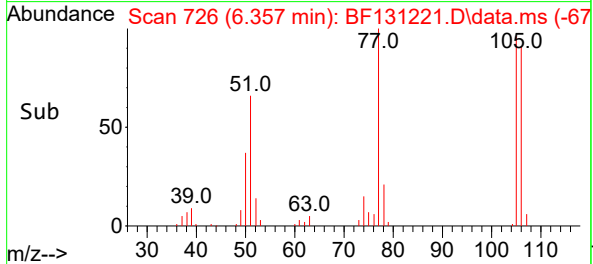
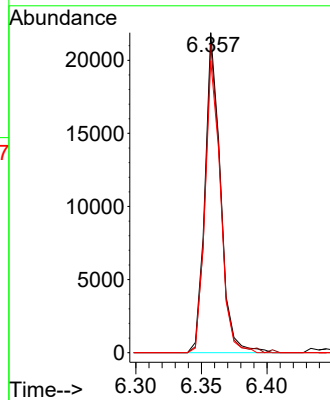
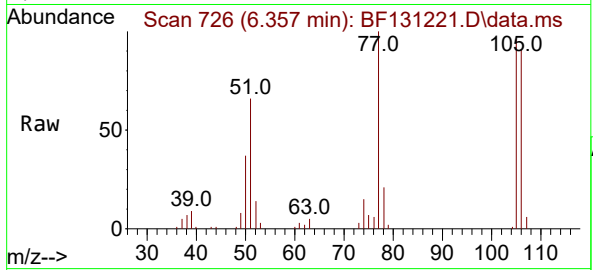




#9
Benzaldehyde
Concen: 6.620 ng
RT: 6.357 min Scan# 71
Delta R.T. -0.006 min
Lab File: BF131221.D
Acq: 14 Nov 2022 12:33

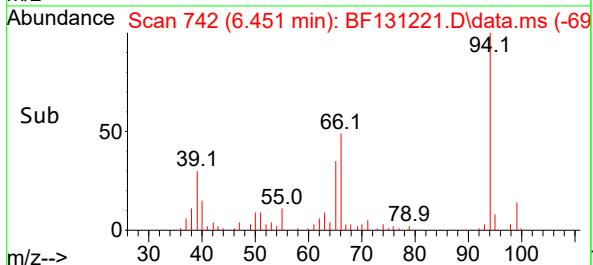
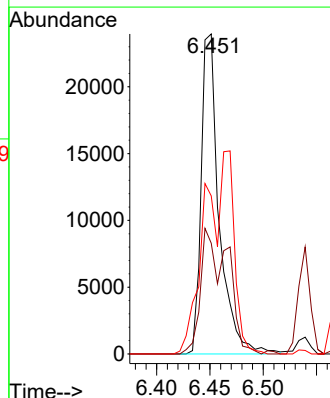
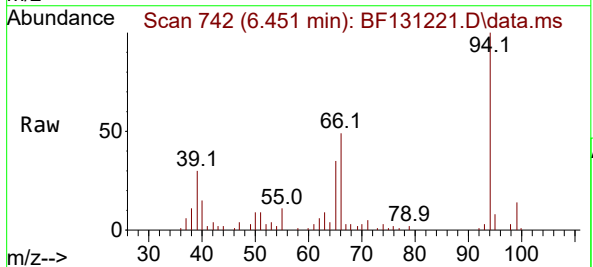
Instrument :
BNA_F
ClientSampleId :
SSTDICC005

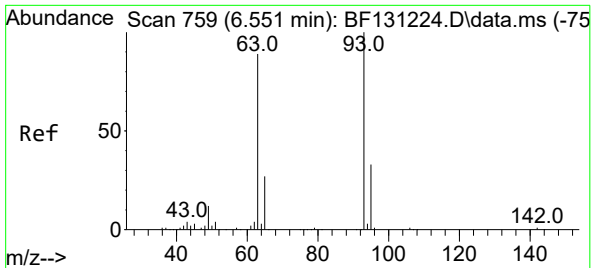
Tgt Ion: 77 Resp: 18072
Ion Ratio Lower Upper
77 100
105 96.4 71.8 111.8
106 91.2 63.6 103.6



#10
Phenol
Concen: 5.043 ng
RT: 6.451 min Scan# 742
Delta R.T. -0.006 min
Lab File: BF131221.D
Acq: 14 Nov 2022 12:33

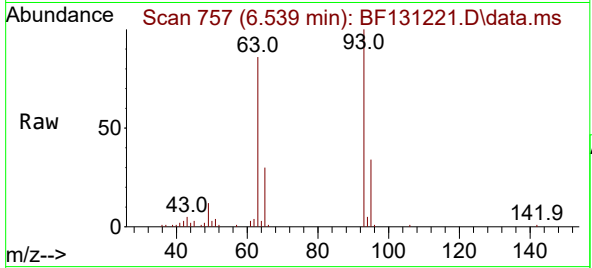
Tgt Ion: 94 Resp: 28201
Ion Ratio Lower Upper
94 100
65 34.6 20.2 60.2
66 49.4 36.8 76.8





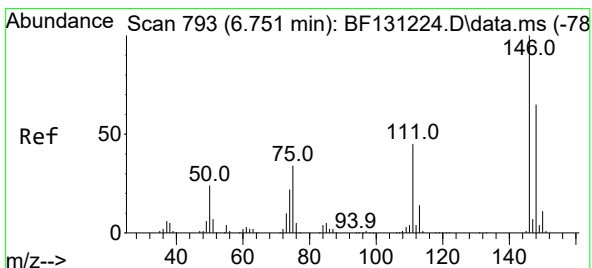
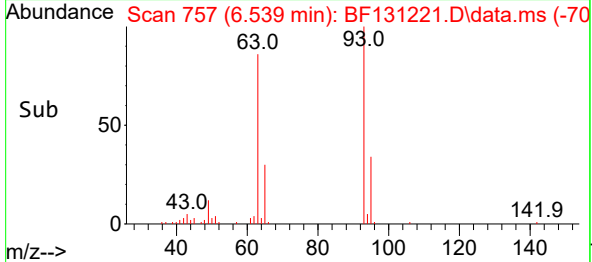
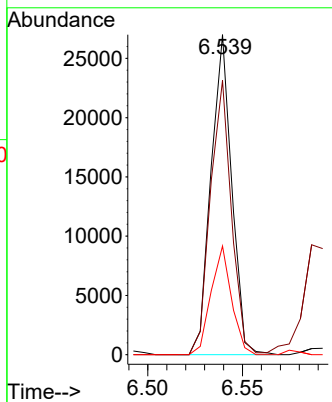
#11
 bis(2-Chloroethyl)ether
 Concen: 5.129 ng
 RT: 6.539 min Scan# 711
 Delta R.T. -0.012 min
 Lab File: BF131221.D
 Acq: 14 Nov 2022 12:33

Instrument : BNA_F
 ClientSampleId : SSTDICC005



Tgt Ion: 93 Resp: 20621

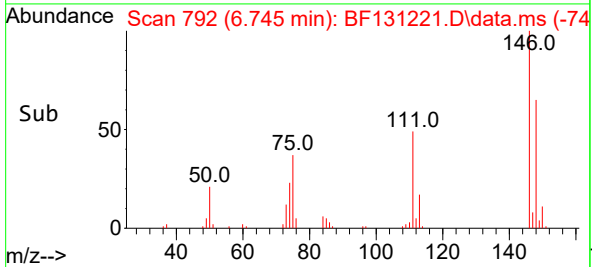
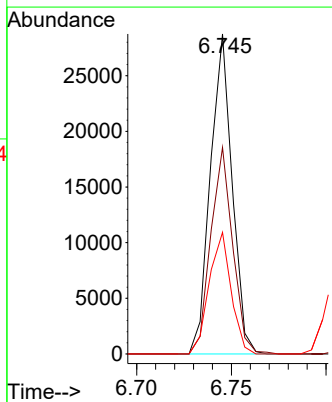
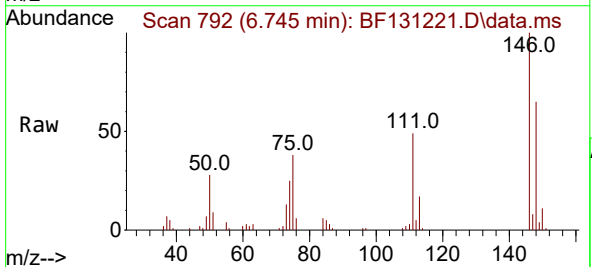
Ion	Ratio	Lower	Upper
93	100		
63	85.7	68.7	108.7
95	33.9	12.7	52.7

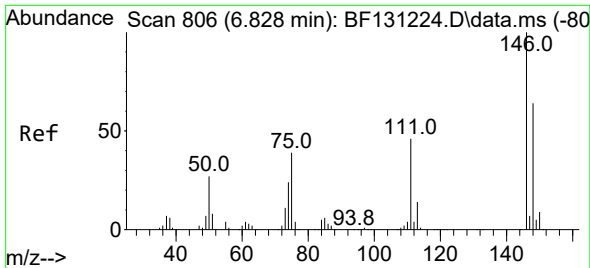


#12
 1,3-Dichlorobenzene
 Concen: 5.194 ng
 RT: 6.745 min Scan# 792
 Delta R.T. -0.006 min
 Lab File: BF131221.D
 Acq: 14 Nov 2022 12:33

Tgt Ion: 146 Resp: 22948

Ion	Ratio	Lower	Upper
146	100		
148	64.6	51.6	77.4
75	38.0	27.0	40.6



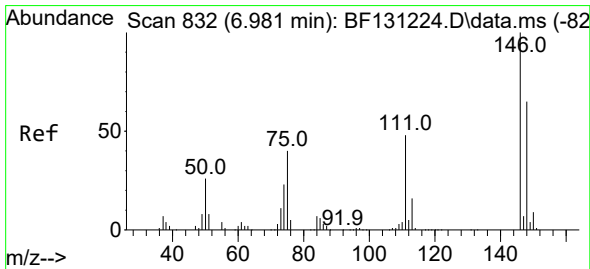
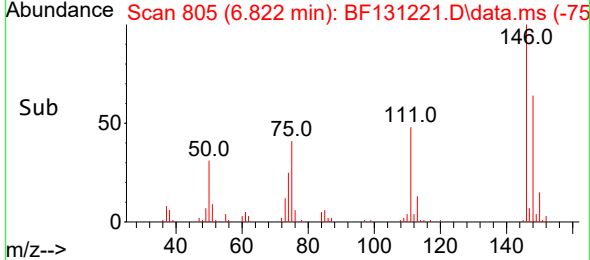
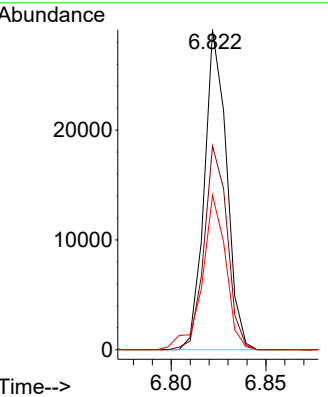
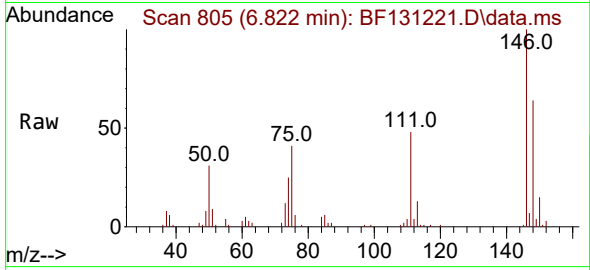


#13
 1,4-Dichlorobenzene
 Concen: 5.084 ng
 RT: 6.822 min Scan# 805
 Delta R.T. -0.006 min
 Lab File: BF131221.D
 Acq: 14 Nov 2022 12:33

Instrument : BNA_F
 ClientSampleId : SSTDICC005

Tgt Ion:146 Resp: 23780

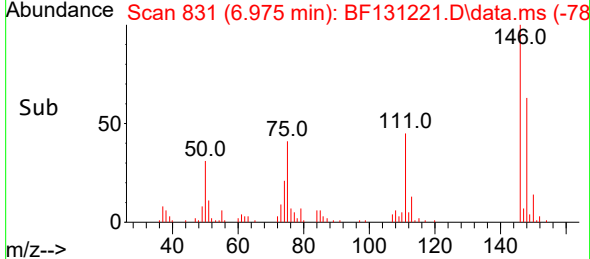
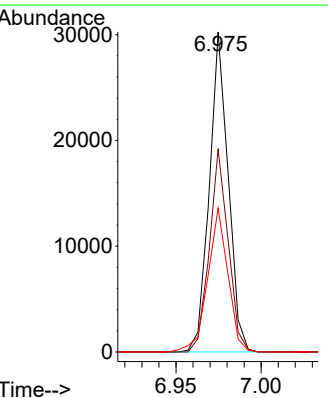
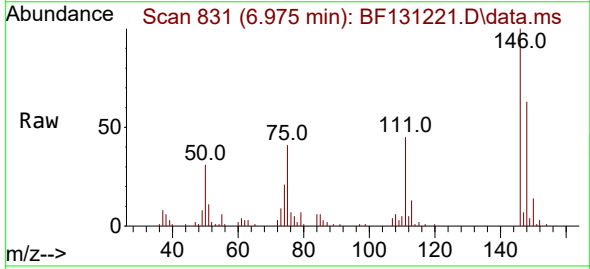
Ion	Ratio	Lower	Upper
146	100		
148	63.7	51.0	76.4
111	48.3	36.7	55.1

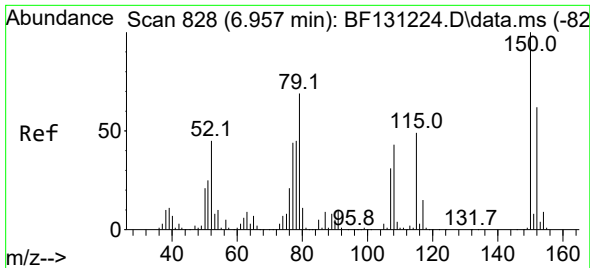


#14
 1,2-Dichlorobenzene
 Concen: 5.687 ng
 RT: 6.975 min Scan# 831
 Delta R.T. -0.006 min
 Lab File: BF131221.D
 Acq: 14 Nov 2022 12:33

Tgt Ion:146 Resp: 23311

Ion	Ratio	Lower	Upper
146	100		
148	63.5	52.2	78.2
111	44.9	38.2	57.2



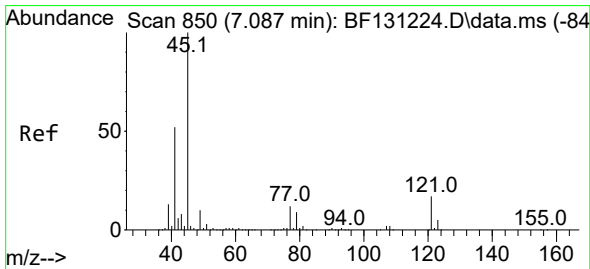
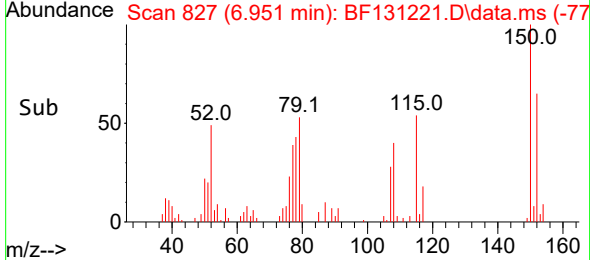
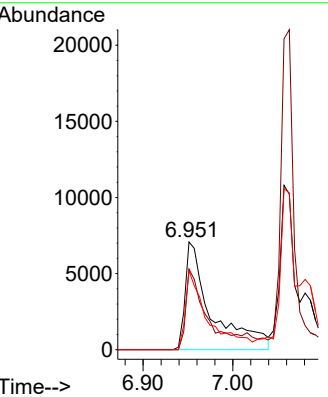
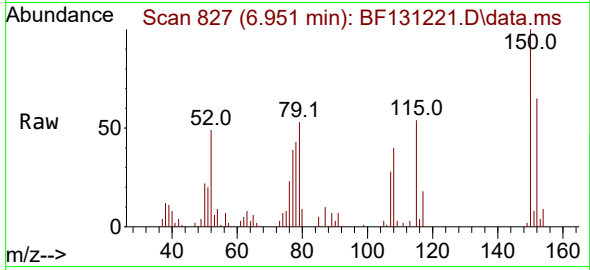


#15
 Benzyl Alcohol
 Concen: 4.500 ng
 RT: 6.951 min Scan# 811
 Delta R.T. -0.006 min
 Lab File: BF131221.D
 Acq: 14 Nov 2022 12:33

Instrument :
 BNA_F
 ClientSampleId :
 SSTDICC005

Tgt Ion: 79 Resp: 14484

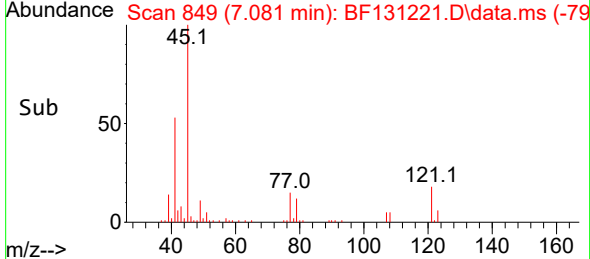
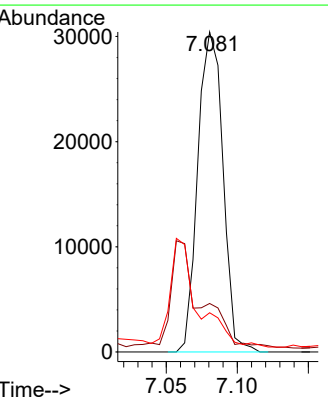
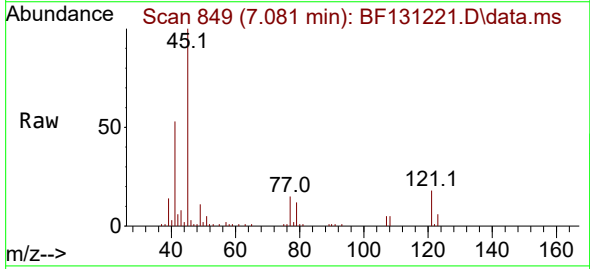
Ion	Ratio	Lower	Upper
79	100		
108	74.9	49.8	74.6#
77	73.4	51.0	76.6

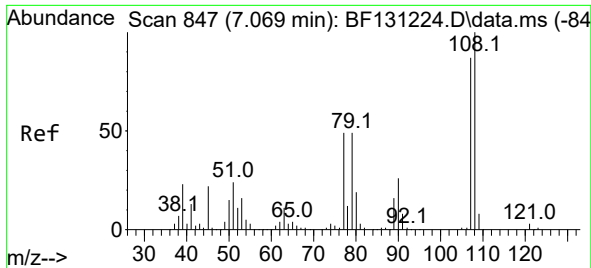


#16
 2,2'-oxybis(1-Chloropropane)
 Concen: 5.147 ng
 RT: 7.081 min Scan# 849
 Delta R.T. -0.006 min
 Lab File: BF131221.D
 Acq: 14 Nov 2022 12:33

Tgt Ion: 45 Resp: 37433

Ion	Ratio	Lower	Upper
45	100		
77	15.2	0.0	33.3
79	12.2	0.0	30.7





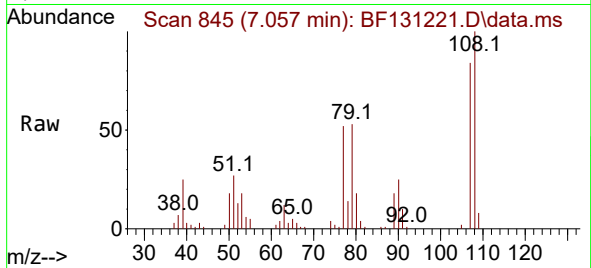
#17
 2-Methylphenol
 Concen: 5.070 ng
 RT: 7.057 min Scan# 845
 Delta R.T. -0.012 min
 Lab File: BF131221.D
 Acq: 14 Nov 2022 12:33

Instrument :

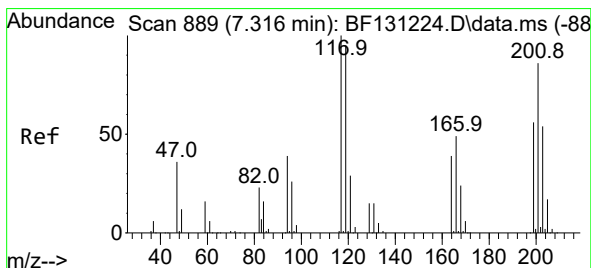
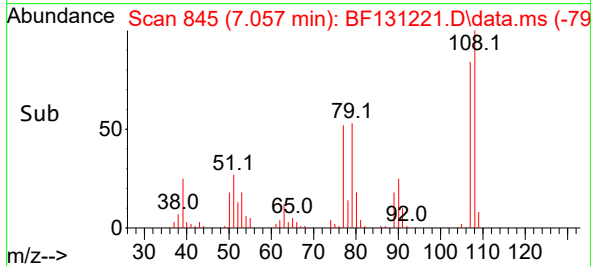
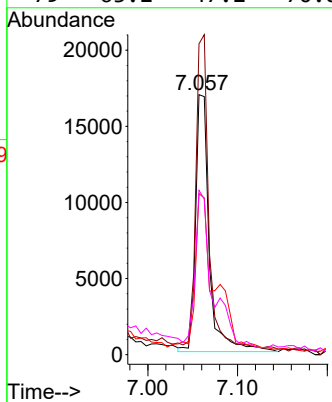
BNA_F

ClientSampleId :

SSTDICC005

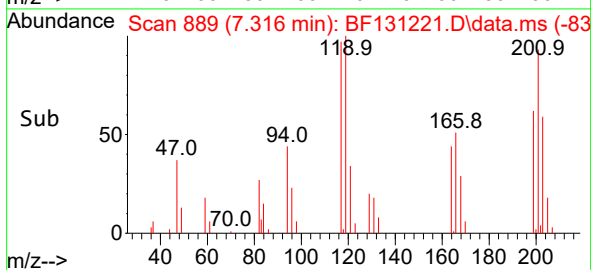
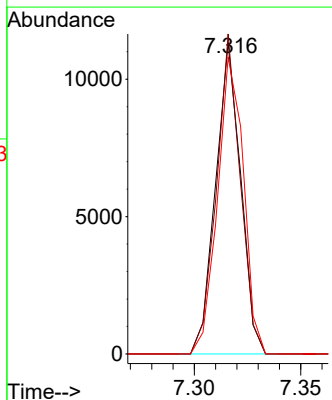
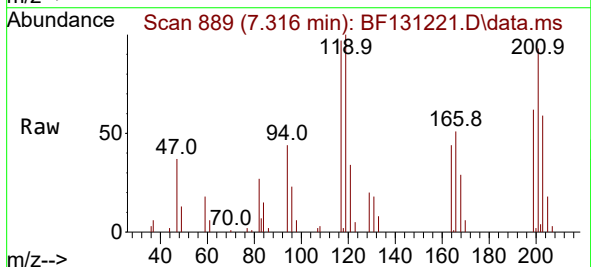


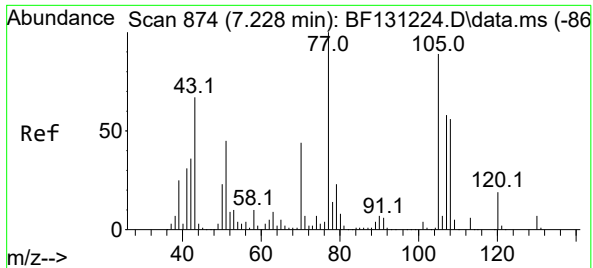
Tgt Ion:107 Resp: 17875
 Ion Ratio Lower Upper
 107 100
 108 119.6 92.2 138.4
 77 61.9 46.3 69.5
 79 63.2 47.2 70.8



#18
 Hexachloroethane
 Concen: 4.911 ng
 RT: 7.316 min Scan# 889
 Delta R.T. -0.000 min
 Lab File: BF131221.D
 Acq: 14 Nov 2022 12:33

Tgt Ion:117 Resp: 9266
 Ion Ratio Lower Upper
 117 100
 119 102.7 75.8 113.6
 201 95.3 69.2 103.8



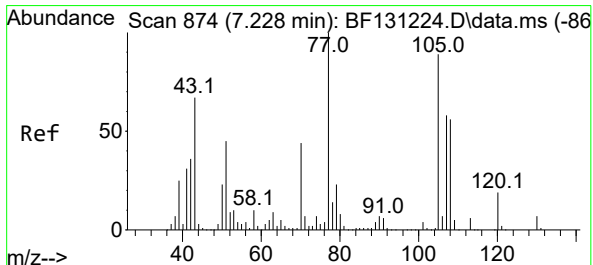
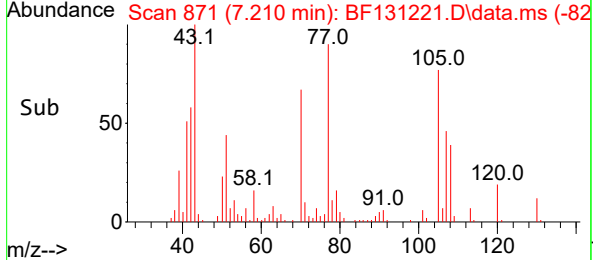
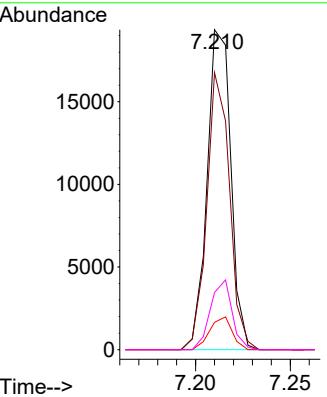
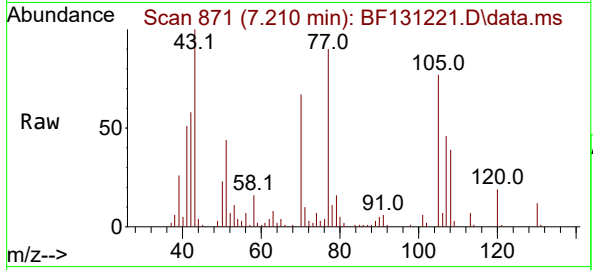


#19
 n-Nitroso-di-n-propylamine
 Concen: 5.189 ng
 RT: 7.210 min Scan# 81
 Delta R.T. -0.018 min
 Lab File: BF131221.D
 Acq: 14 Nov 2022 12:33

Instrument : BNA_F
 ClientSampleId : SSTDICC005

Tgt Ion: 70 Resp: 16911

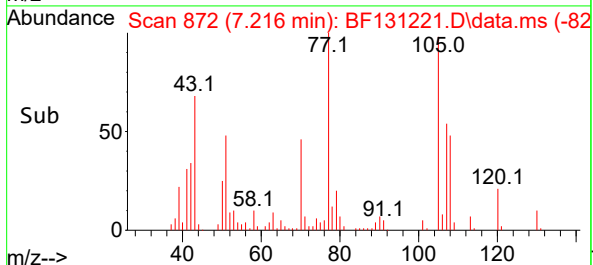
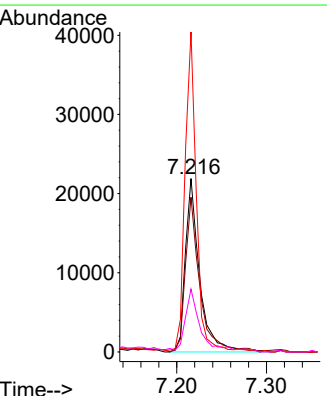
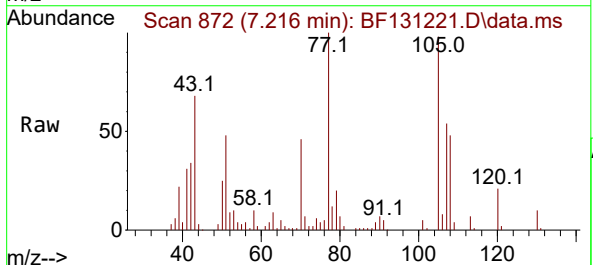
Ion	Ratio	Lower	Upper
70	100		
42	86.6	65.8	98.6
101	8.5	7.4	11.0
130	17.8	13.5	20.3

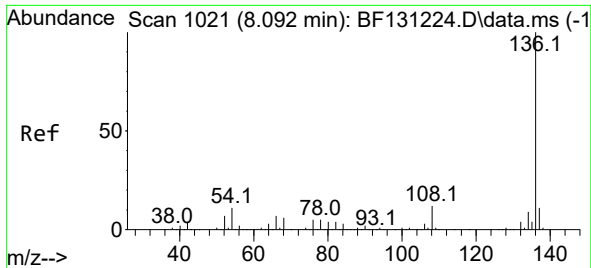


#20
 3+4-Methylphenols
 Concen: 5.612 ng
 RT: 7.216 min Scan# 872
 Delta R.T. -0.012 min
 Lab File: BF131221.D
 Acq: 14 Nov 2022 12:33

Tgt Ion: 107 Resp: 24211

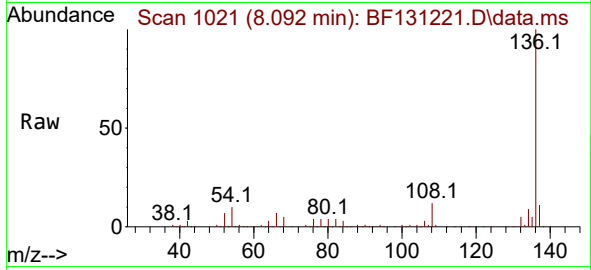
Ion	Ratio	Lower	Upper
107	100		
108	89.3	76.5	116.5
77	184.5	151.6	191.6
79	36.2	20.6	60.6



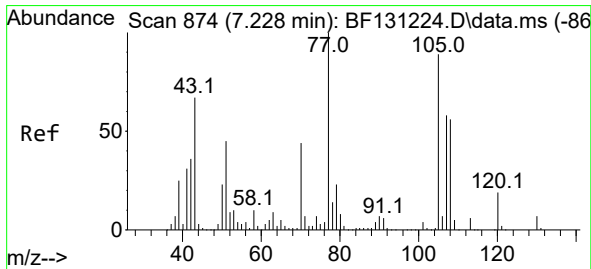
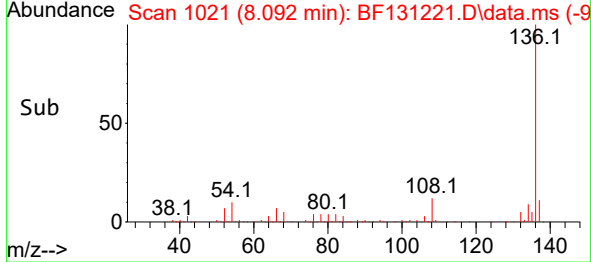
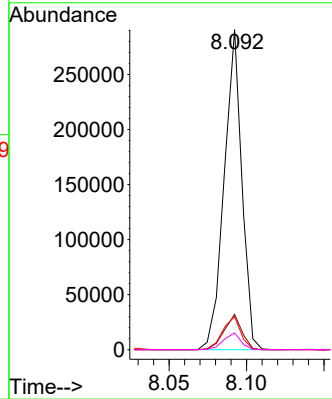


#21
 Naphthalene-d8
 Concen: 20.000 ng
 RT: 8.092 min Scan# 10
 Delta R.T. -0.000 min
 Lab File: BF131221.D
 Acq: 14 Nov 2022 12:33

Instrument :
 BNA_F
 ClientSampleId :
 SSTDICC005

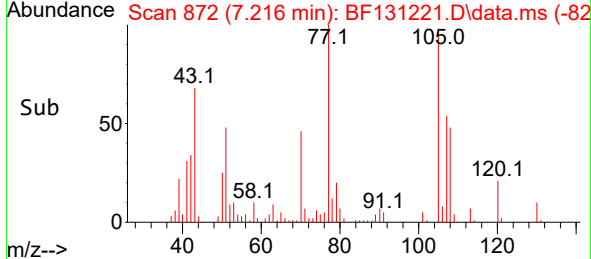
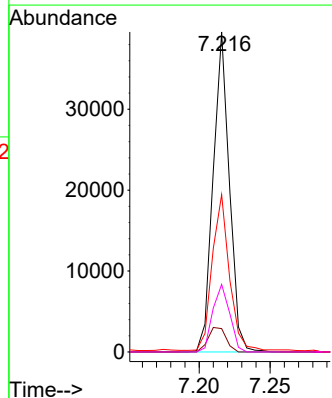
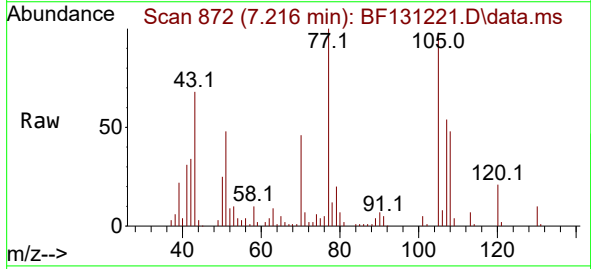


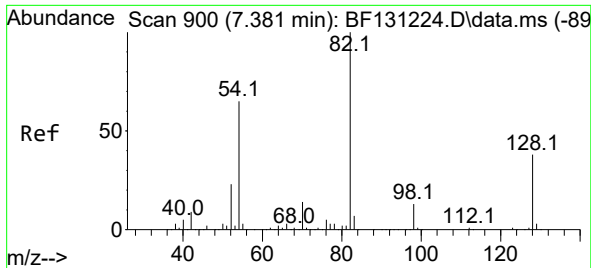
Tgt Ion:136 Resp: 230446
 Ion Ratio Lower Upper
 136 100
 137 11.0 9.0 13.4
 54 10.3 9.0 13.4
 68 5.3 5.0 7.4



#22
 Acetophenone
 Concen: 5.090 ng
 RT: 7.216 min Scan# 872
 Delta R.T. -0.012 min
 Lab File: BF131221.D
 Acq: 14 Nov 2022 12:33

Tgt Ion:105 Resp: 31505
 Ion Ratio Lower Upper
 105 100
 71 7.3 6.3 9.5
 51 49.2 40.6 60.8
 120 21.1 16.7 25.1



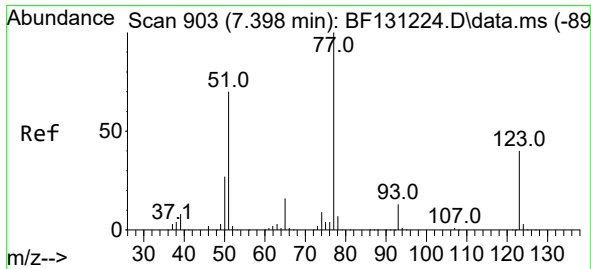
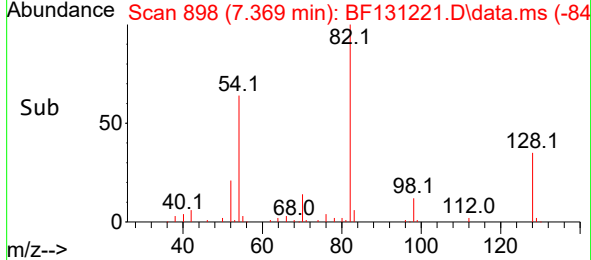
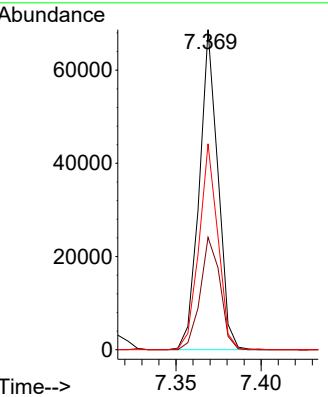
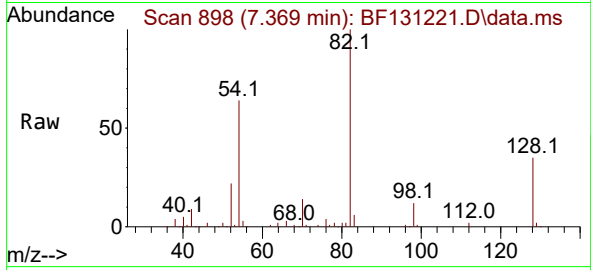


#23
 Nitrobenzene-d5
 Concen: 9.741 ng
 RT: 7.369 min Scan# 89
 Delta R.T. -0.012 min
 Lab File: BF131221.D
 Acq: 14 Nov 2022 12:33

Instrument :
 BNA_F
 ClientSampleId :
 SSTDICC005

Tgt Ion: 82 Resp: 52323

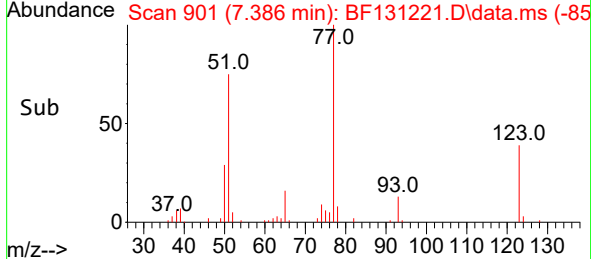
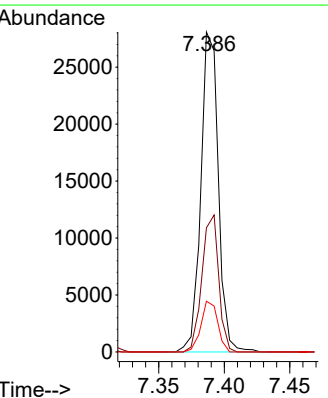
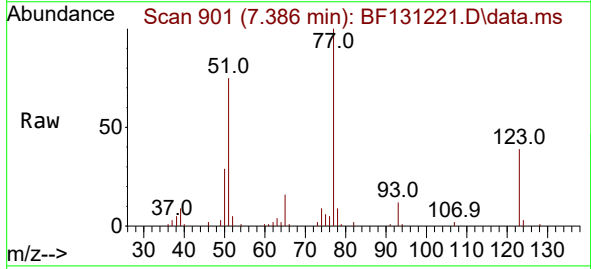
Ion	Ratio	Lower	Upper
82	100		
128	35.1	30.3	45.5
54	64.4	52.3	78.5

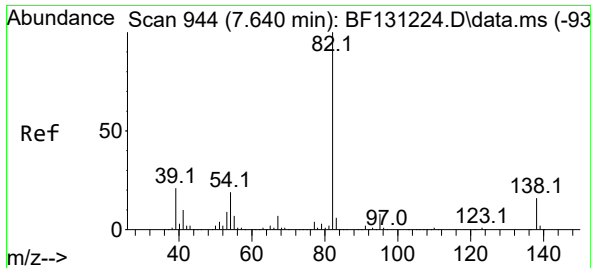


#24
 Nitrobenzene
 Concen: 4.868 ng
 RT: 7.386 min Scan# 901
 Delta R.T. -0.012 min
 Lab File: BF131221.D
 Acq: 14 Nov 2022 12:33

Tgt Ion: 77 Resp: 26026

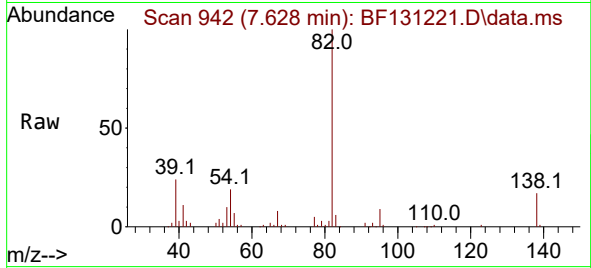
Ion	Ratio	Lower	Upper
77	100		
123	38.8	31.9	47.9
65	15.9	12.9	19.3



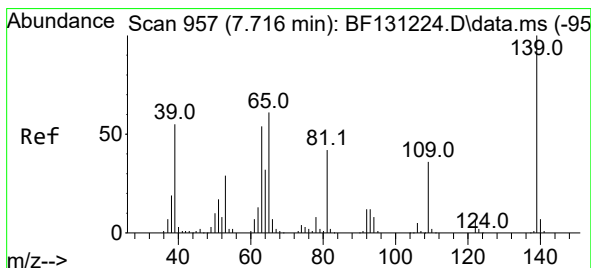
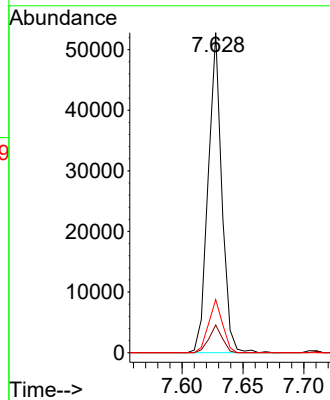
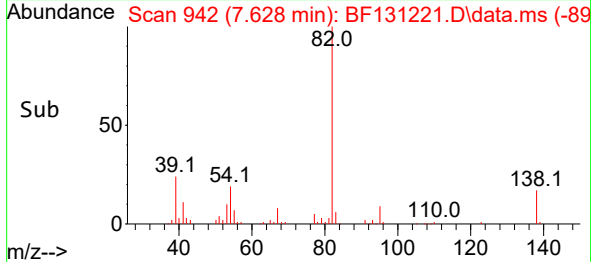


#25
 Isophorone
 Concen: 4.699 ng
 RT: 7.628 min Scan# 944
 Delta R.T. -0.012 min
 Lab File: BF131221.D
 Acq: 14 Nov 2022 12:33

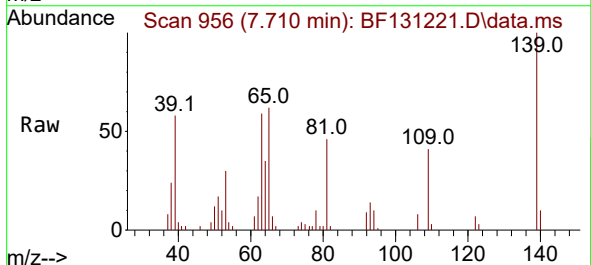
Instrument : BNA_F
 Client Sample Id : SSTDICC005



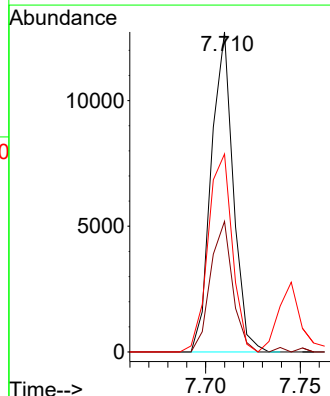
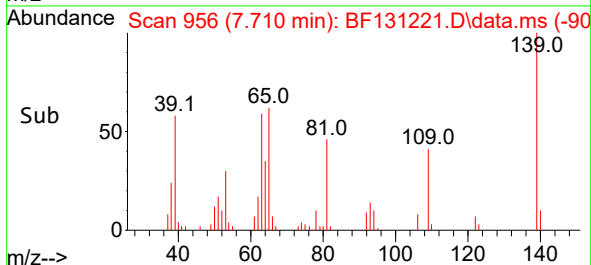
Tgt Ion: 82 Resp: 40933
 Ion Ratio Lower Upper
 82 100
 95 8.6 6.2 9.4
 138 16.6 12.9 19.3

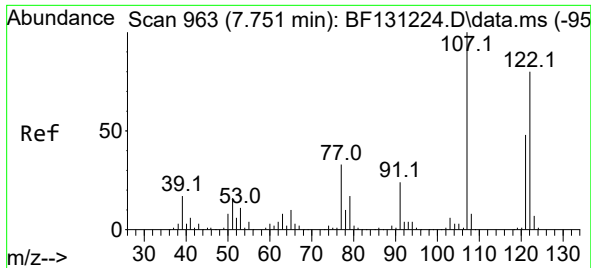


#26
 2-Nitrophenol
 Concen: 4.495 ng
 RT: 7.710 min Scan# 956
 Delta R.T. -0.006 min
 Lab File: BF131221.D
 Acq: 14 Nov 2022 12:33



Tgt Ion: 139 Resp: 10301
 Ion Ratio Lower Upper
 139 100
 109 40.8 29.0 43.6
 65 61.9 49.0 73.6

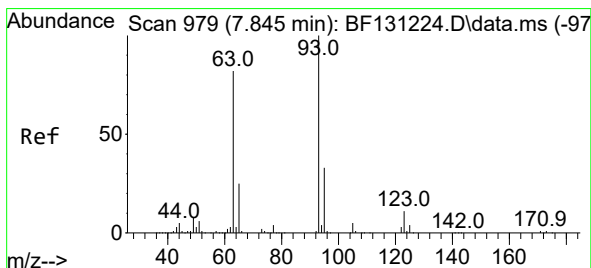
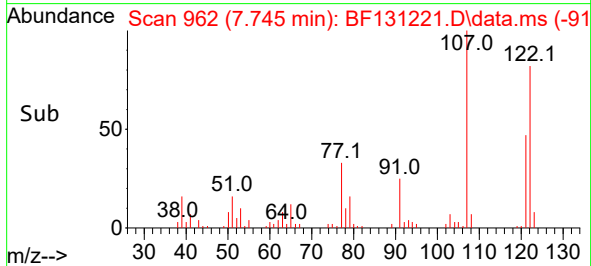
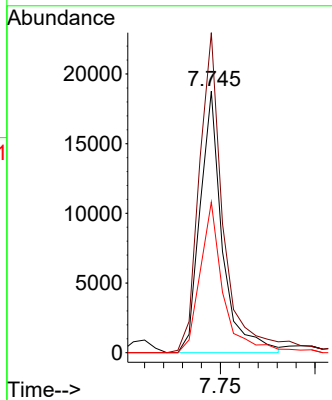
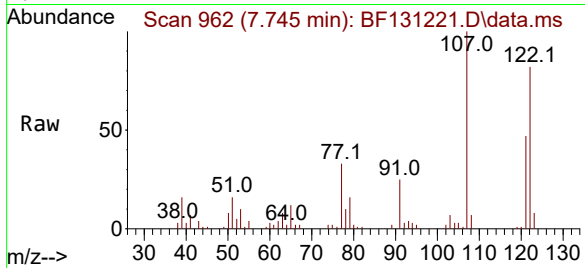




#27
 2,4-Dimethylphenol
 Concen: 4.461 ng
 RT: 7.745 min Scan# 90
 Delta R.T. -0.006 min
 Lab File: BF131221.D
 Acq: 14 Nov 2022 12:33

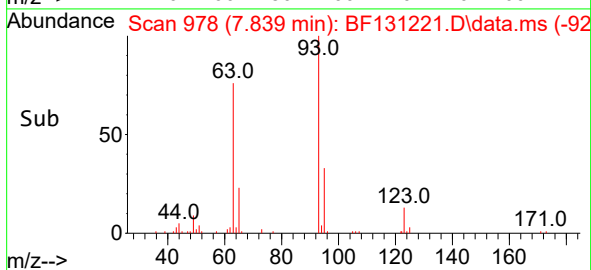
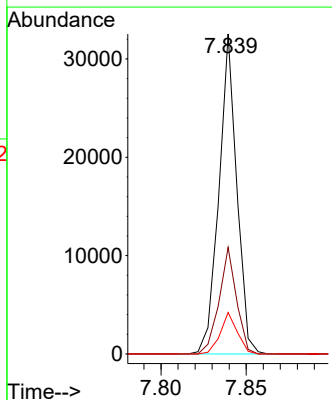
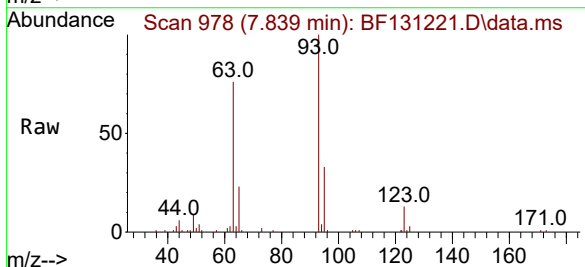
Instrument :
 BNA_F
 ClientSampleId :
 SSTDICC005

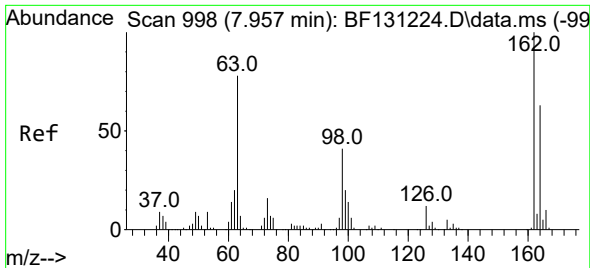
Tgt Ion	Resp	Lower	Upper
122	15356		
107	100	100.2	150.4
121	57.6	47.9	71.9



#28
 bis(2-Chloroethoxy)methane
 Concen: 5.135 ng
 RT: 7.839 min Scan# 978
 Delta R.T. -0.006 min
 Lab File: BF131221.D
 Acq: 14 Nov 2022 12:33

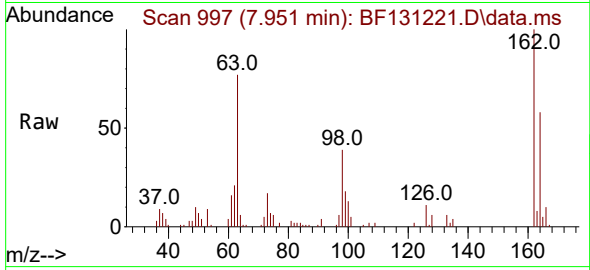
Tgt Ion	Resp	Lower	Upper
93	23699		
95	100	26.6	39.8
123	33.3	8.7	13.1





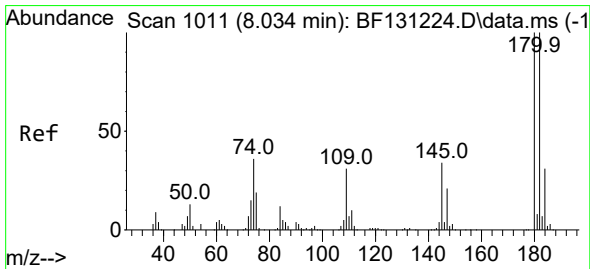
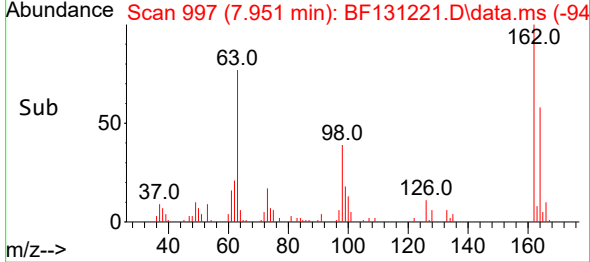
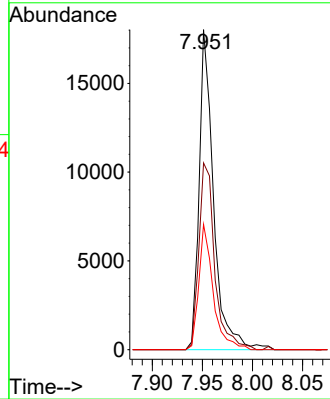
#29
 2,4-Dichlorophenol
 Concen: 5.052 ng
 RT: 7.951 min Scan# 997
 Delta R.T. -0.006 min
 Lab File: BF131221.D
 Acq: 14 Nov 2022 12:33

Instrument :
 BNA_F
 ClientSampleId :
 SSTDICC005



Tgt Ion:162 Resp: 18076

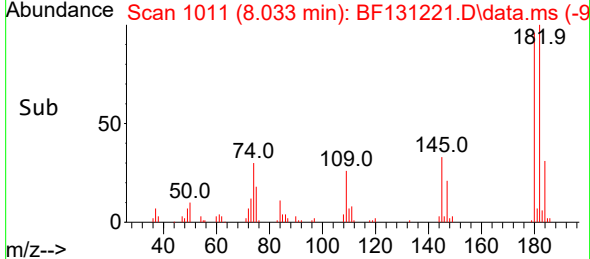
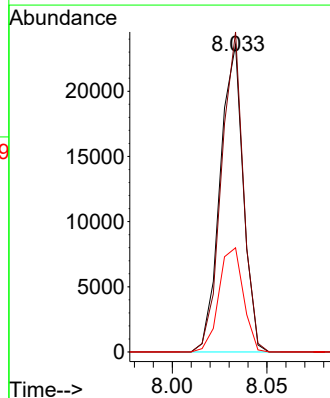
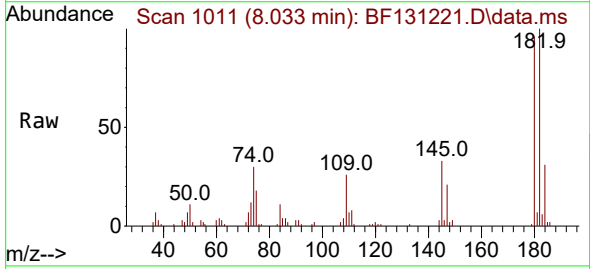
Ion	Ratio	Lower	Upper
162	100		
164	58.3	43.3	83.3
98	39.2	20.9	60.9

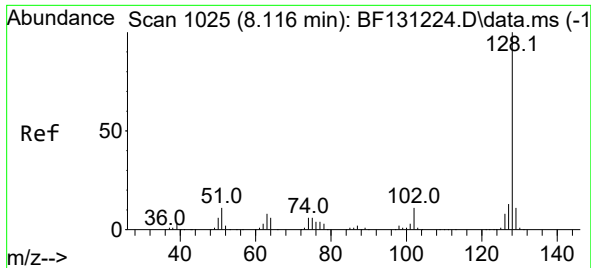


#30
 1,2,4-Trichlorobenzene
 Concen: 4.949 ng
 RT: 8.033 min Scan# 1011
 Delta R.T. -0.000 min
 Lab File: BF131221.D
 Acq: 14 Nov 2022 12:33

Tgt Ion:180 Resp: 20057

Ion	Ratio	Lower	Upper
180	100		
182	104.0	79.9	119.9
145	33.9	27.0	40.6





#31
 Naphthalene
 Concen: 5.250 ng
 RT: 8.110 min Scan# 1024
 Delta R.T. -0.006 min
 Lab File: BF131221.D
 Acq: 14 Nov 2022 12:33

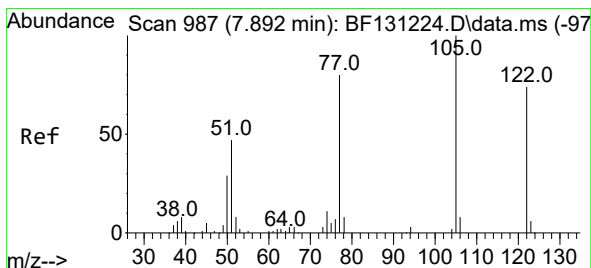
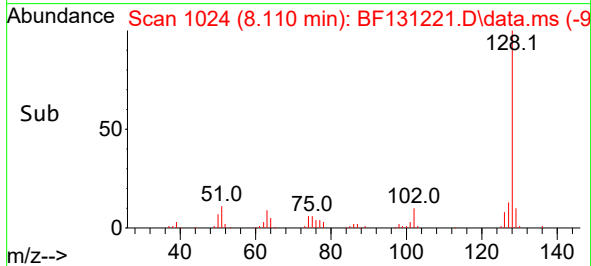
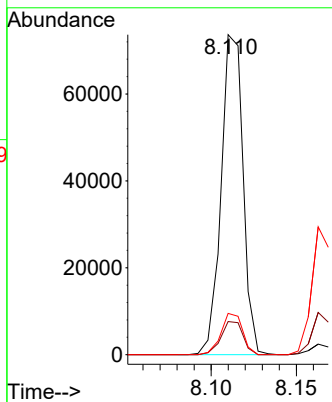
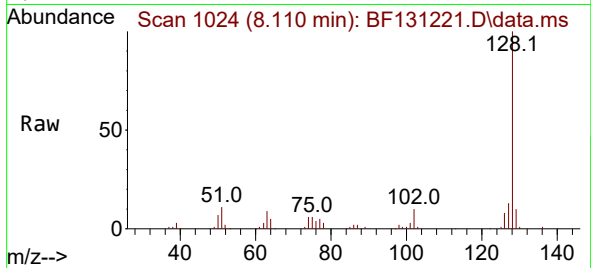
Instrument :

BNA_F

ClientSampleId :

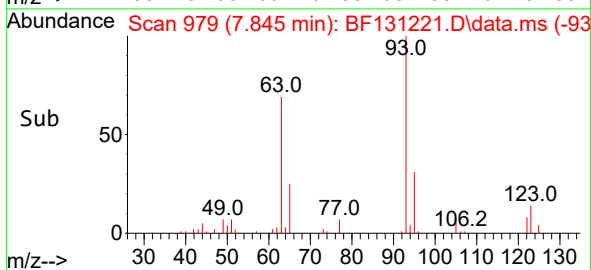
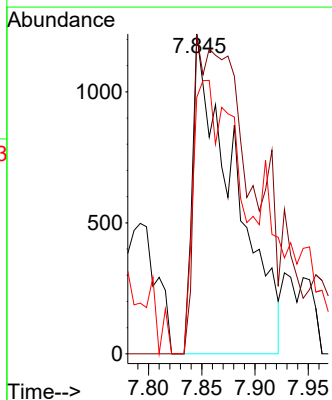
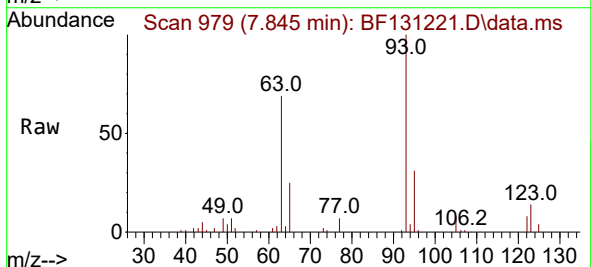
SSTDICC005

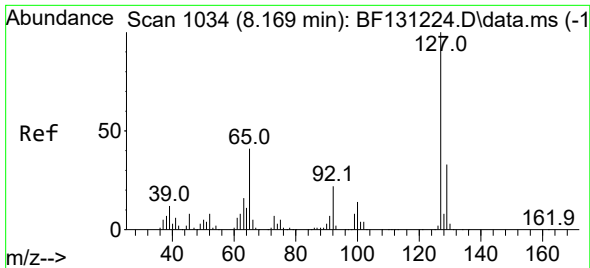
Tgt Ion:128 Resp: 66078
 Ion Ratio Lower Upper
 128 100
 129 10.4 8.8 13.2
 127 12.9 10.5 15.7



#32
 Benzoic acid
 Concen: 1.956 ng
 RT: 7.845 min Scan# 979
 Delta R.T. -0.047 min
 Lab File: BF131221.D
 Acq: 14 Nov 2022 12:33

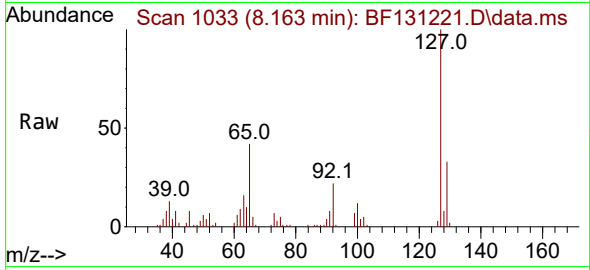
Tgt Ion:122 Resp: 3269
 Ion Ratio Lower Upper
 122 100
 105 99.7 110.4 150.4#
 77 80.2 86.5 126.5#





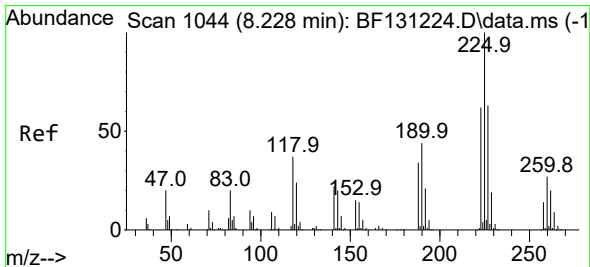
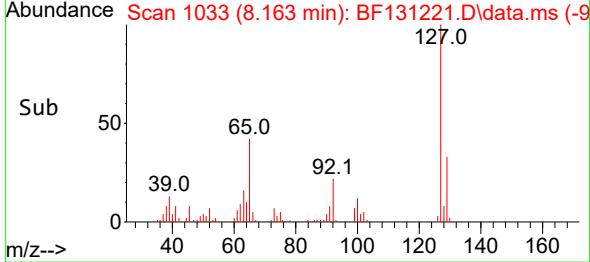
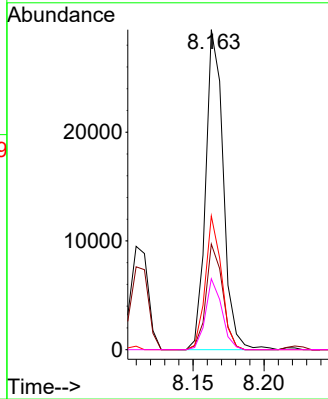
#33
 4-Chloroaniline
 Concen: 5.203 ng
 RT: 8.163 min Scan# 1033
 Delta R.T. -0.006 min
 Lab File: BF131221.D
 Acq: 14 Nov 2022 12:33

Instrument : BNA_F
 ClientSampleId : SSTDICC005



Tgt Ion:127 Resp: 25451

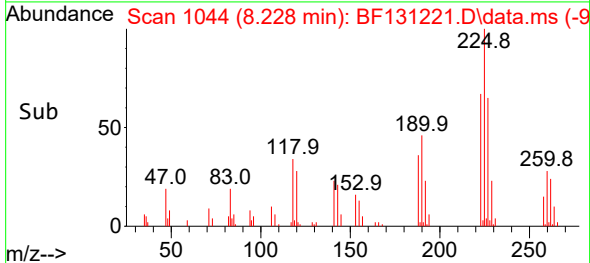
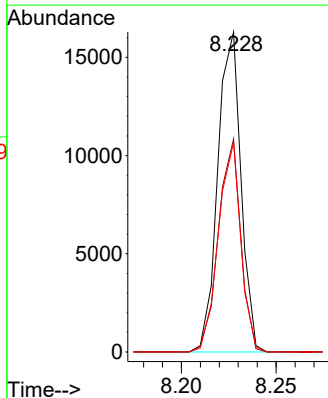
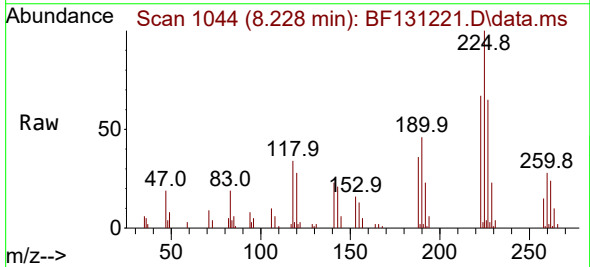
Ion	Ratio	Lower	Upper
127	100		
129	33.0	26.0	39.0
65	41.8	32.6	49.0
92	22.2	17.5	26.3

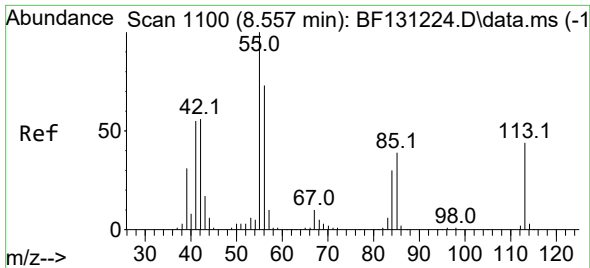


#34
 Hexachlorobutadiene
 Concen: 4.941 ng
 RT: 8.228 min Scan# 1044
 Delta R.T. -0.000 min
 Lab File: BF131221.D
 Acq: 14 Nov 2022 12:33

Tgt Ion:225 Resp: 13862

Ion	Ratio	Lower	Upper
225	100		
223	66.6	49.2	73.8
227	65.5	50.4	75.6

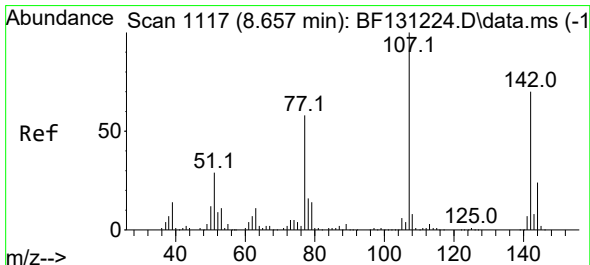
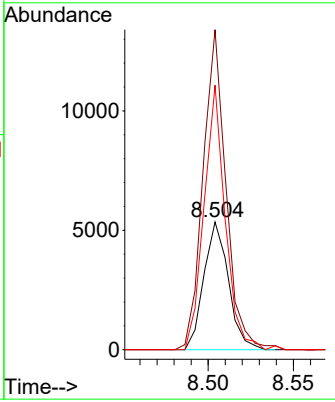
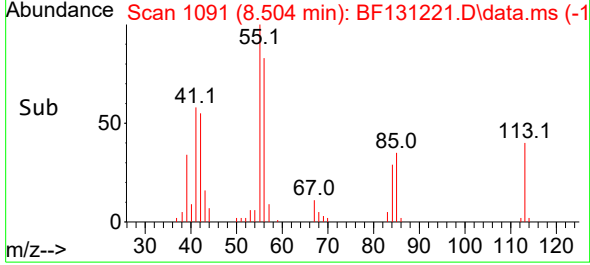
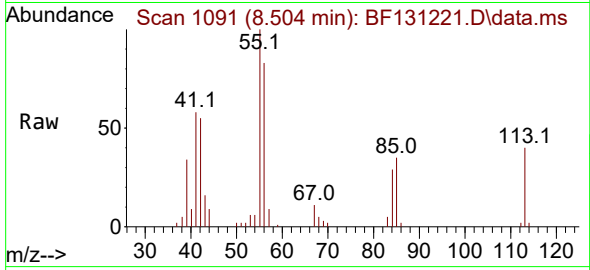




#35
 Caprolactam
 Concen: 5.055 ng
 RT: 8.504 min Scan# 1109
 Delta R.T. -0.053 min
 Lab File: BF131221.D
 Acq: 14 Nov 2022 12:33

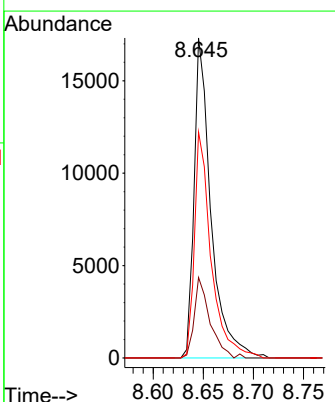
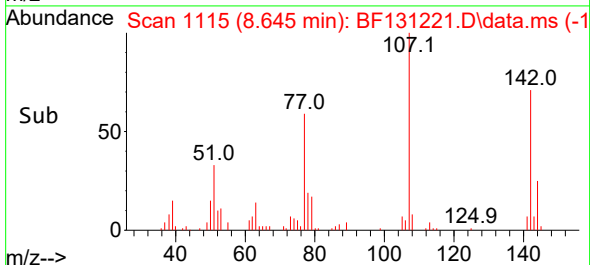
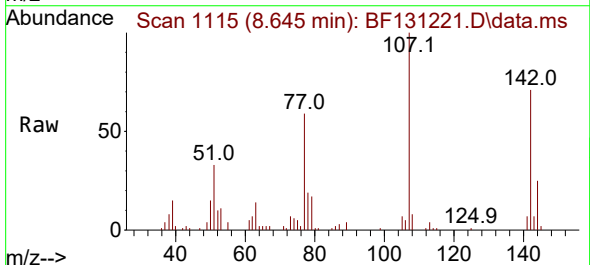
Instrument : BNA_F
 ClientSampleId : SSTDICC005

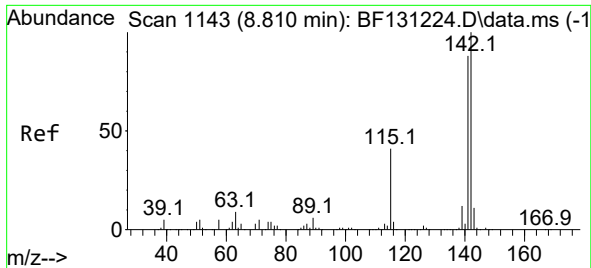
Tgt Ion:113 Resp: 5374
 Ion Ratio Lower Upper
 113 100
 55 250.6 206.4 246.4#
 56 207.0 144.4 184.4#



#36
 4-Chloro-3-methylphenol
 Concen: 4.882 ng
 RT: 8.645 min Scan# 1115
 Delta R.T. -0.012 min
 Lab File: BF131221.D
 Acq: 14 Nov 2022 12:33

Tgt Ion:107 Resp: 20394
 Ion Ratio Lower Upper
 107 100
 144 25.1 19.2 28.8
 142 70.6 55.8 83.8





#37
 2-Methylnaphthalene
 Concen: 5.196 ng
 RT: 8.804 min Scan# 1142
 Delta R.T. -0.006 min
 Lab File: BF131221.D
 Acq: 14 Nov 2022 12:33

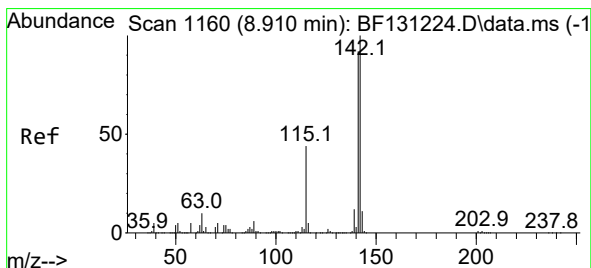
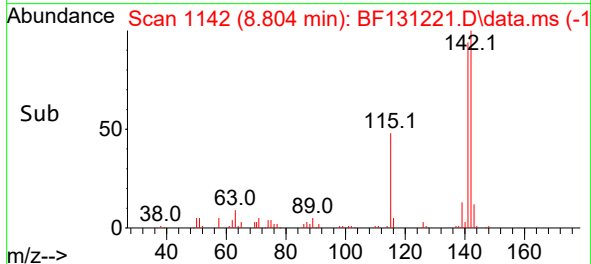
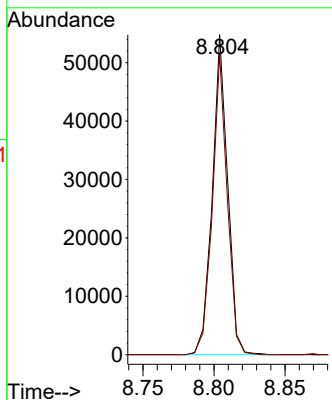
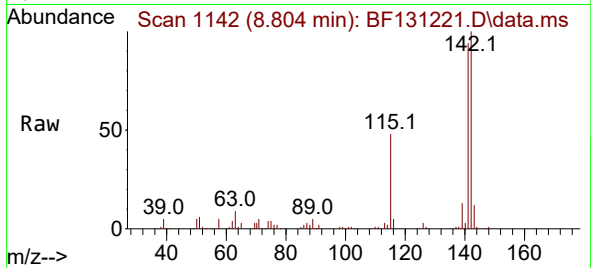
Instrument :

BNA_F

ClientSampleId :

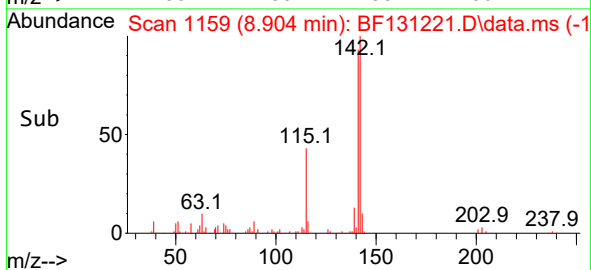
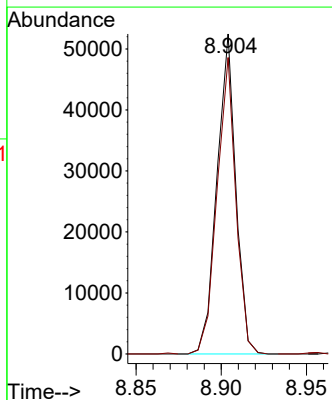
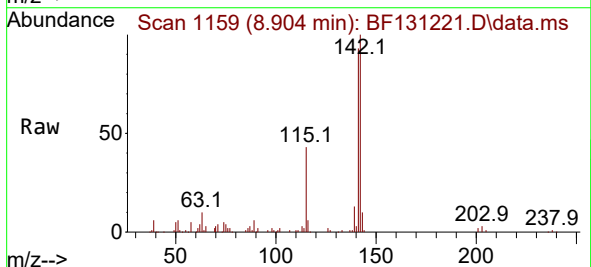
SSTDICC005

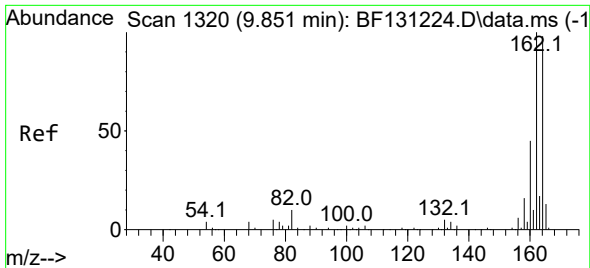
Tgt Ion:142 Resp: 41132
 Ion Ratio Lower Upper
 142 100
 141 94.0 70.2 105.4



#38
 1-Methylnaphthalene
 Concen: 5.355 ng
 RT: 8.904 min Scan# 1159
 Delta R.T. -0.006 min
 Lab File: BF131221.D
 Acq: 14 Nov 2022 12:33

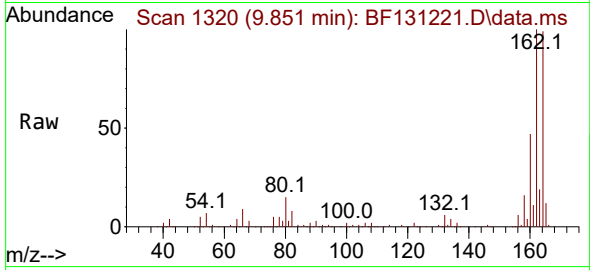
Tgt Ion:142 Resp: 40412
 Ion Ratio Lower Upper
 142 100
 141 92.7 73.4 110.2



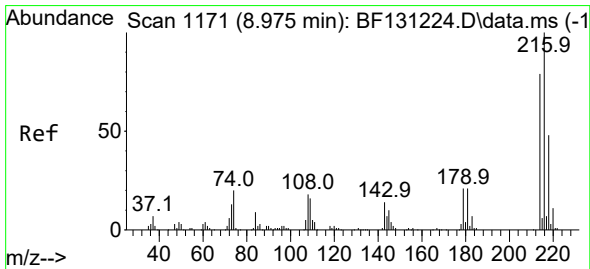
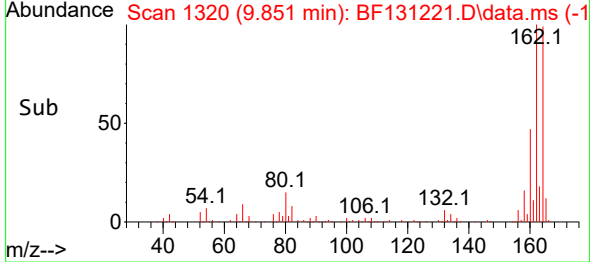
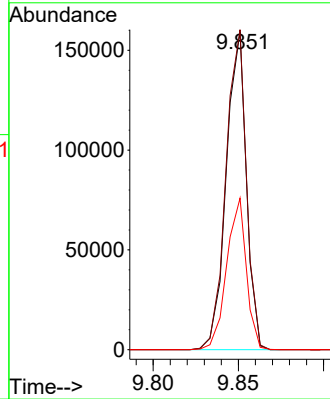


#39
 Acenaphthene-d10
 Concen: 20.000 ng
 RT: 9.851 min Scan# 111
 Delta R.T. -0.000 min
 Lab File: BF131221.D
 Acq: 14 Nov 2022 12:33

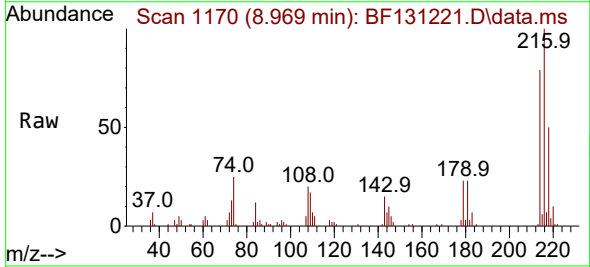
Instrument :
 BNA_F
 ClientSampleId :
 SSTDICC005



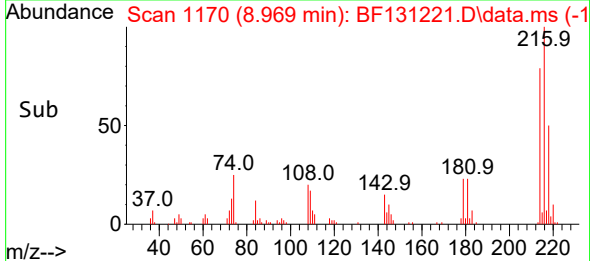
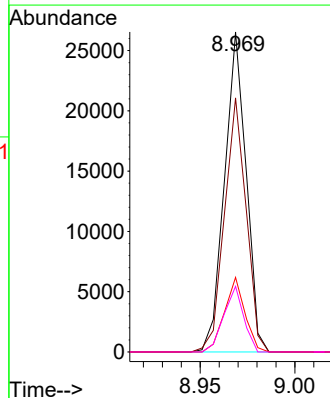
Tgt Ion:164 Resp: 130318
 Ion Ratio Lower Upper
 164 100
 162 100.6 81.4 122.0
 160 47.6 36.6 54.8

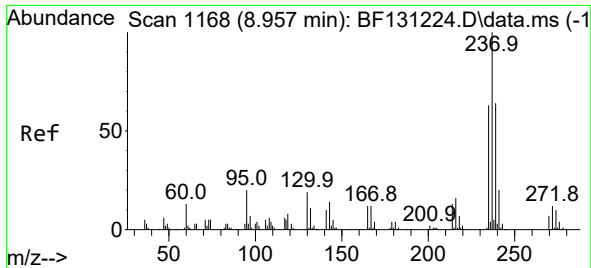


#40
 1,2,4,5-Tetrachlorobenzene
 Concen: 5.117 ng
 RT: 8.969 min Scan# 1170
 Delta R.T. -0.006 min
 Lab File: BF131221.D
 Acq: 14 Nov 2022 12:33



Tgt Ion:216 Resp: 21102
 Ion Ratio Lower Upper
 216 100
 214 79.5 63.5 95.3
 179 22.1 17.0 25.6
 108 18.9 16.1 24.1





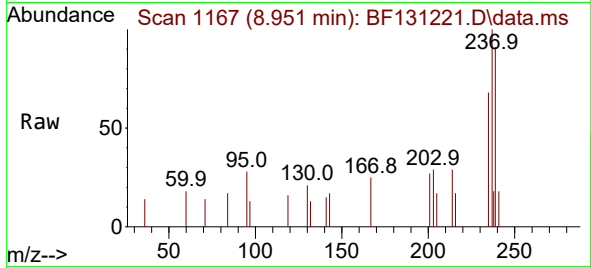
#41
 Hexachlorocyclopentadiene
 Concen: 0.703 ng
 RT: 8.951 min Scan# 1167
 Delta R.T. -0.006 min
 Lab File: BF131221.D
 Acq: 14 Nov 2022 12:33

Instrument :

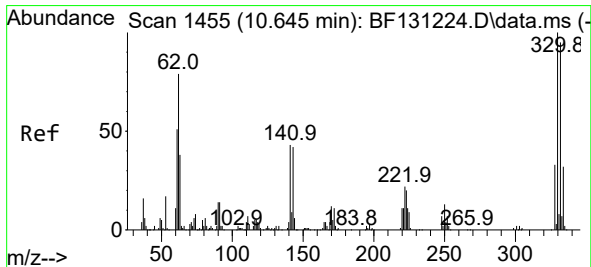
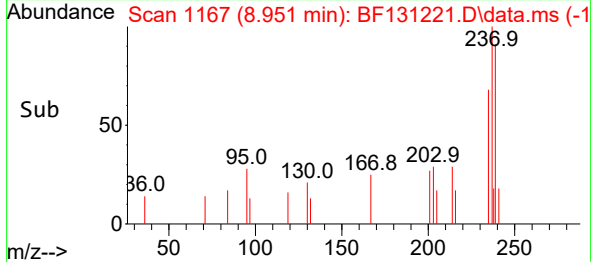
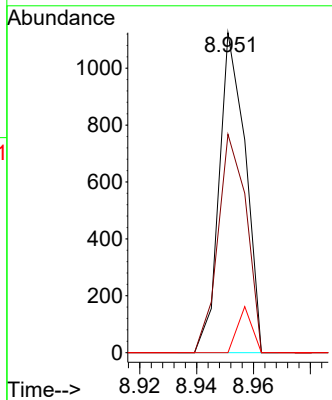
BNA_F

ClientSampleId :

SSTDICC005

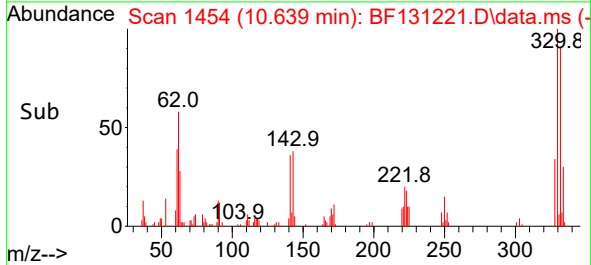
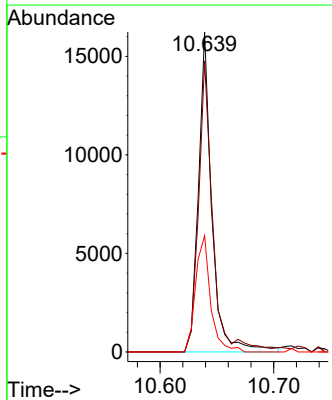
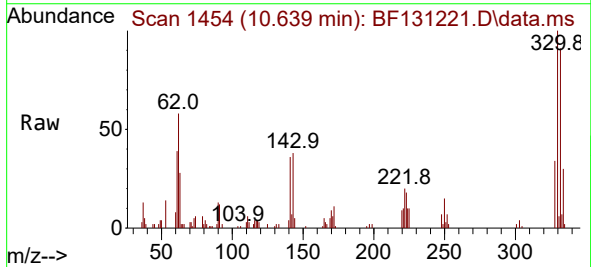


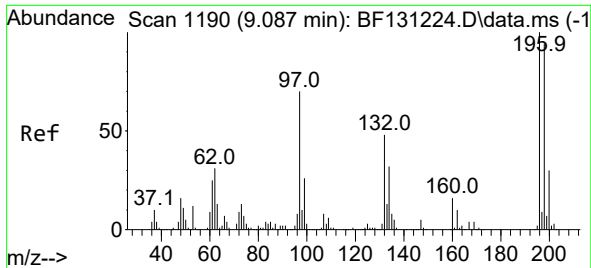
Tgt Ion:237 Resp: 716
 Ion Ratio Lower Upper
 237 100
 235 68.3 42.7 82.7
 272 0.0 0.0 32.4



#42
 2,4,6-Tribromophenol
 Concen: 10.367 ng
 RT: 10.639 min Scan# 1454
 Delta R.T. -0.006 min
 Lab File: BF131221.D
 Acq: 14 Nov 2022 12:33

Tgt Ion:330 Resp: 13381
 Ion Ratio Lower Upper
 330 100
 332 95.4 76.4 114.6
 141 40.4 31.2 46.8

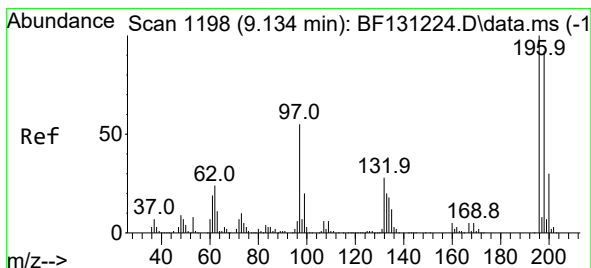
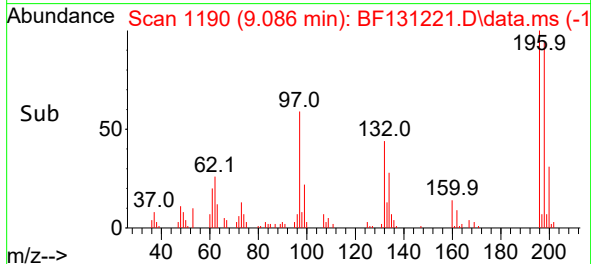
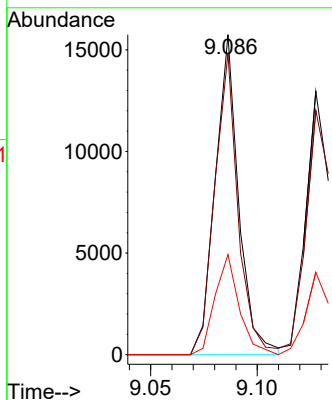
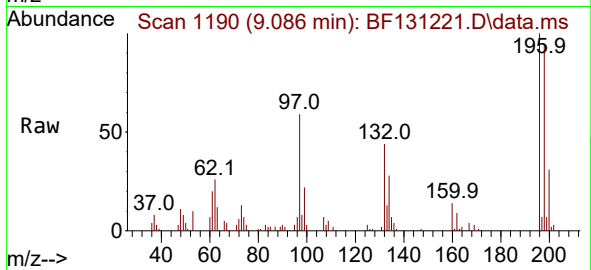




#43
 2,4,6-Trichlorophenol
 Concen: 4.797 ng
 RT: 9.086 min Scan# 1190
 Delta R.T. -0.000 min
 Lab File: BF131221.D
 Acq: 14 Nov 2022 12:33

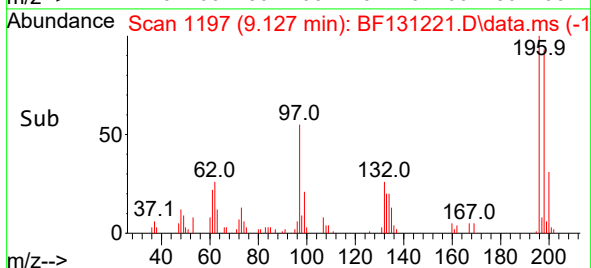
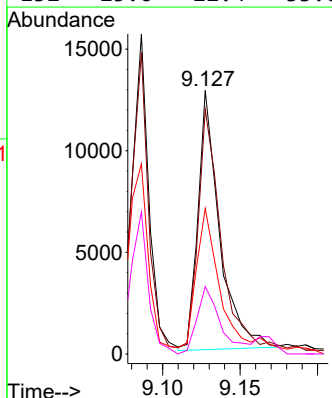
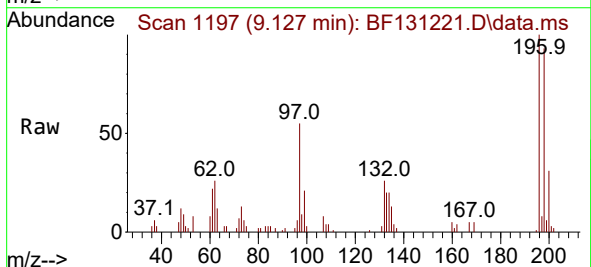
Instrument : BNA_F
 ClientSampleId : SSTDICC005

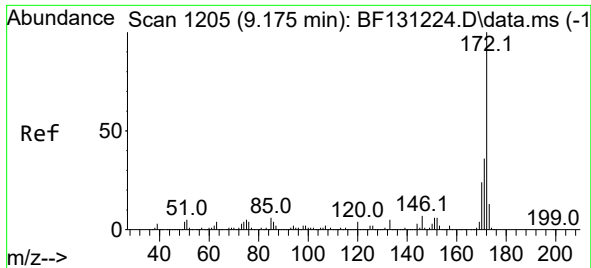
Tgt Ion:196 Resp: 12074
 Ion Ratio Lower Upper
 196 100
 198 94.1 75.2 112.8
 200 31.3 24.3 36.5



#44
 2,4,5-Trichlorophenol
 Concen: 4.590 ng
 RT: 9.127 min Scan# 1197
 Delta R.T. -0.007 min
 Lab File: BF131221.D
 Acq: 14 Nov 2022 12:33

Tgt Ion:196 Resp: 12389
 Ion Ratio Lower Upper
 196 100
 198 92.7 73.5 110.3
 97 55.2 44.2 66.2
 132 25.6 22.4 33.6



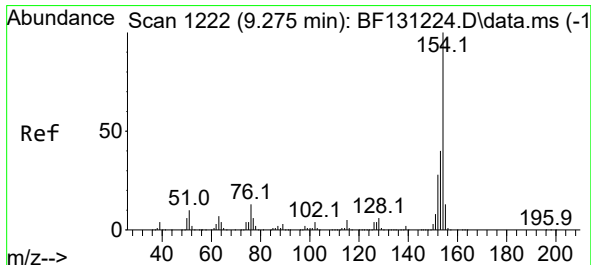
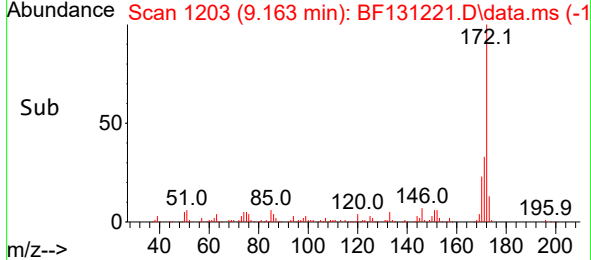
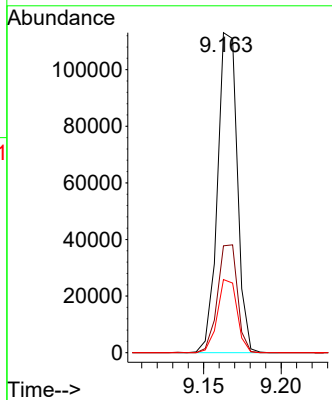
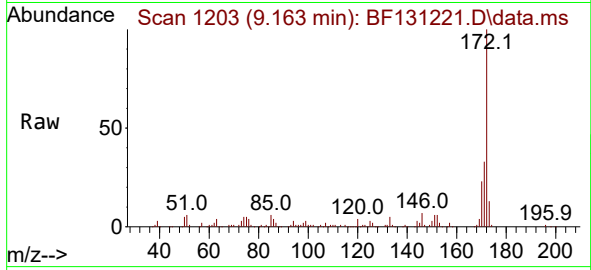


#45
 2-Fluorobiphenyl
 Concen: 10.687 ng
 RT: 9.163 min Scan# 111
 Delta R.T. -0.012 min
 Lab File: BF131221.D
 Acq: 14 Nov 2022 12:33

Instrument : BNA_F
 Client Sample Id : SSTDICC005

Tgt Ion:172 Resp: 100286

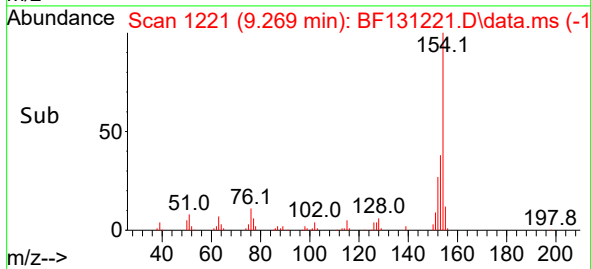
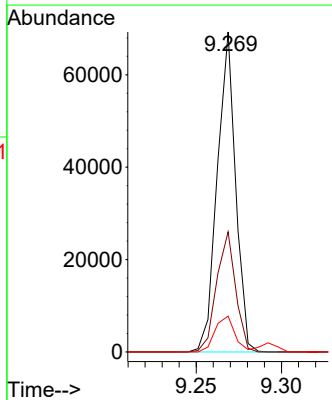
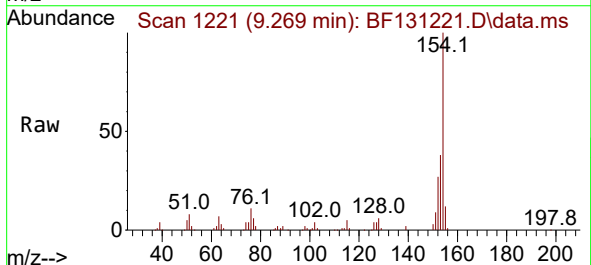
Ion	Ratio	Lower	Upper
172	100		
171	33.4	28.4	42.6
170	22.8	19.1	28.7

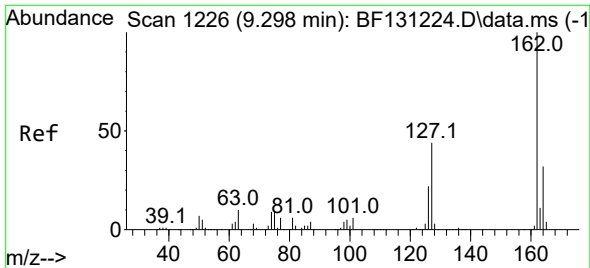


#46
 1,1'-Biphenyl
 Concen: 5.300 ng
 RT: 9.269 min Scan# 1221
 Delta R.T. -0.006 min
 Lab File: BF131221.D
 Acq: 14 Nov 2022 12:33

Tgt Ion:154 Resp: 51901

Ion	Ratio	Lower	Upper
154	100		
153	37.6	20.3	60.3
76	11.2	0.0	32.9



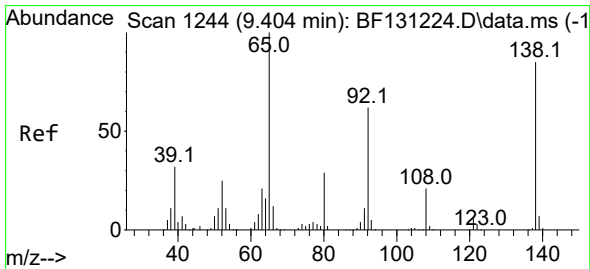
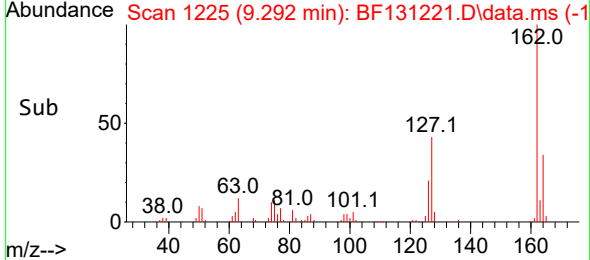
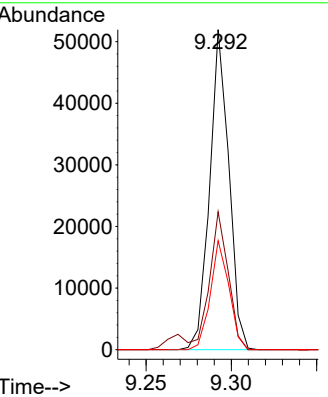
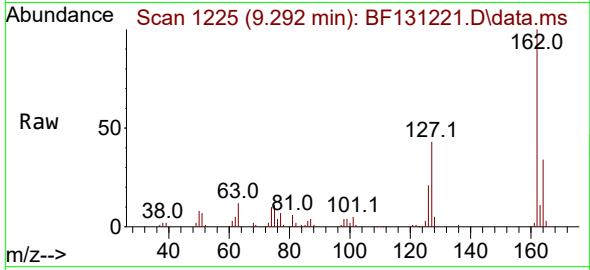


#47
 2-Chloronaphthalene
 Concen: 5.070 ng
 RT: 9.292 min Scan# 11
 Delta R.T. -0.006 min
 Lab File: BF131221.D
 Acq: 14 Nov 2022 12:33

Instrument : BNA_F
 ClientSampleId : SSTDICC005

Tgt Ion:162 Resp: 40738

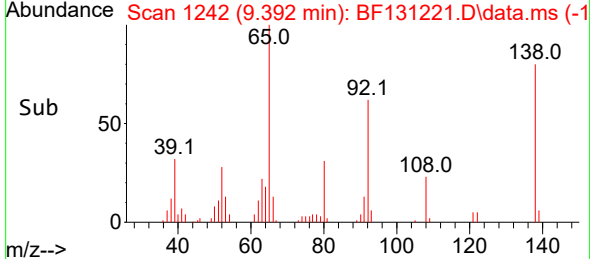
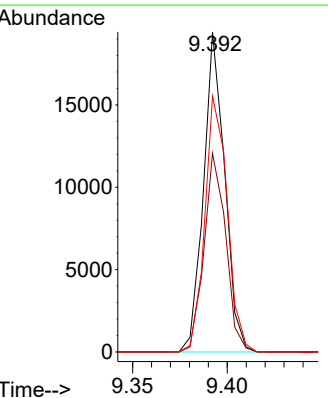
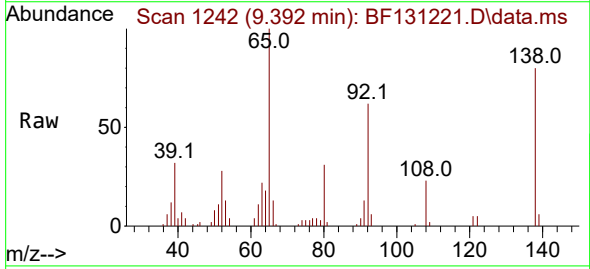
Ion	Ratio	Lower	Upper
162	100		
127	43.1	35.7	53.5
164	34.0	25.7	38.5

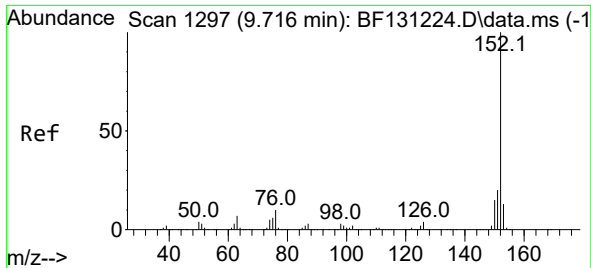


#48
 2-Nitroaniline
 Concen: 4.888 ng
 RT: 9.392 min Scan# 1242
 Delta R.T. -0.012 min
 Lab File: BF131221.D
 Acq: 14 Nov 2022 12:33

Tgt Ion: 65 Resp: 15068

Ion	Ratio	Lower	Upper
65	100		
92	62.1	49.4	74.0
138	79.9	68.0	102.0





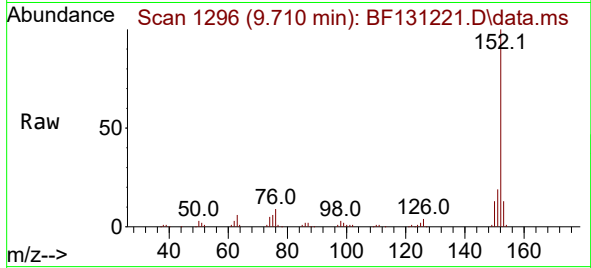
#49
 Acenaphthylene
 Concen: 5.222 ng
 RT: 9.710 min Scan# 11
 Delta R.T. -0.006 min
 Lab File: BF131221.D
 Acq: 14 Nov 2022 12:33

Instrument :

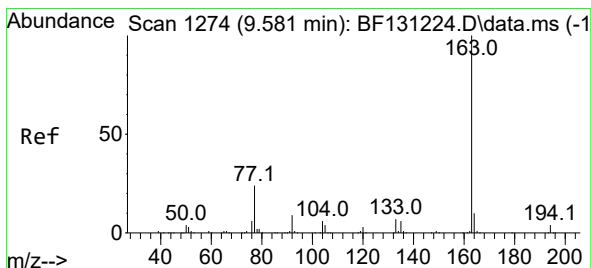
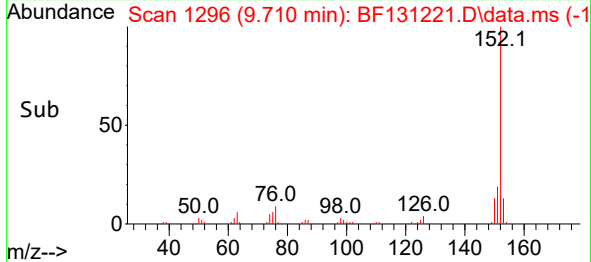
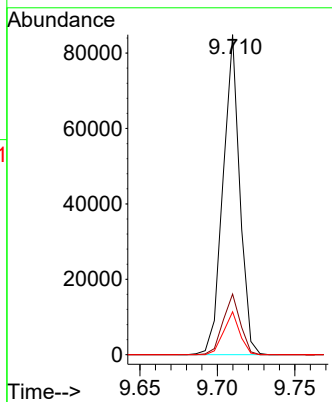
BNA_F

ClientSampleId :

SSTDICC005

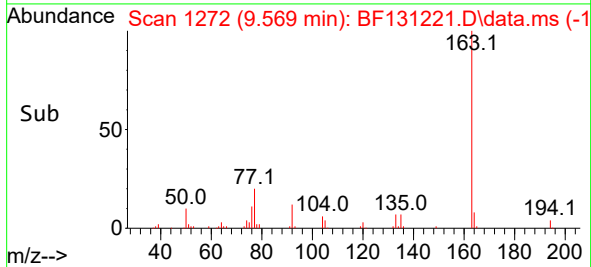
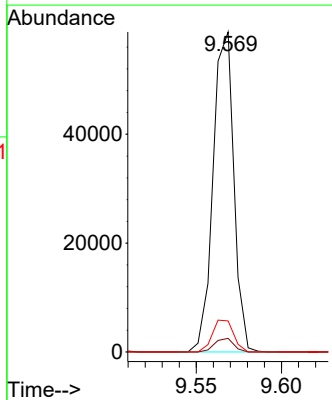
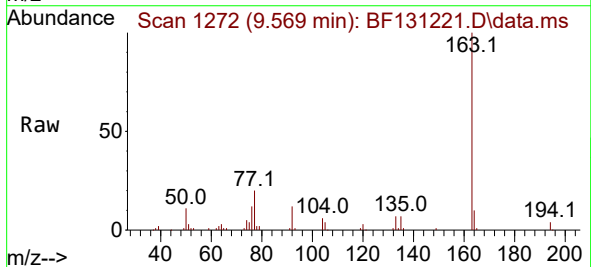


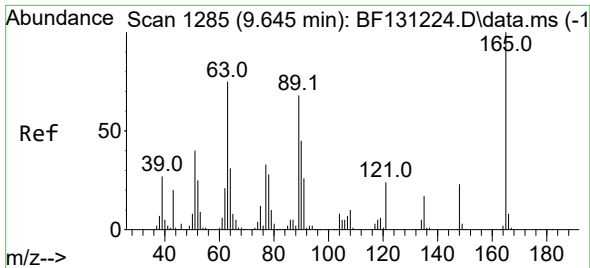
Tgt Ion:152 Resp: 63764
 Ion Ratio Lower Upper
 152 100
 151 18.9 16.0 24.0
 153 13.4 10.7 16.1



#50
 Dimethylphthalate
 Concen: 5.079 ng
 RT: 9.569 min Scan# 1272
 Delta R.T. -0.012 min
 Lab File: BF131221.D
 Acq: 14 Nov 2022 12:33

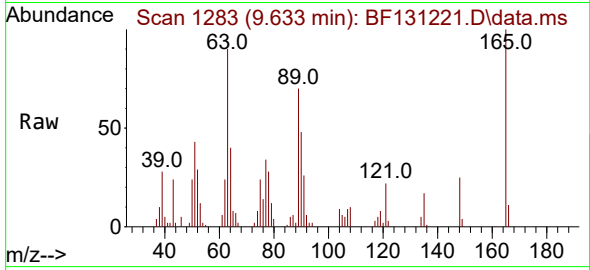
Tgt Ion:163 Resp: 49783
 Ion Ratio Lower Upper
 163 100
 194 4.3 3.1 4.7
 164 9.7 8.2 12.2



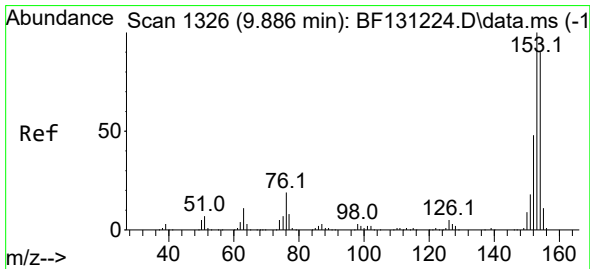
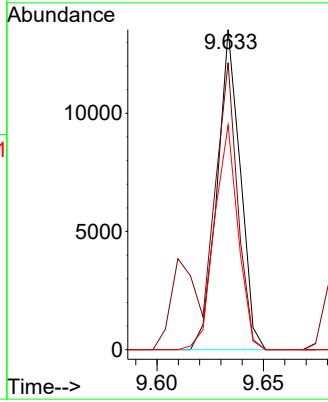
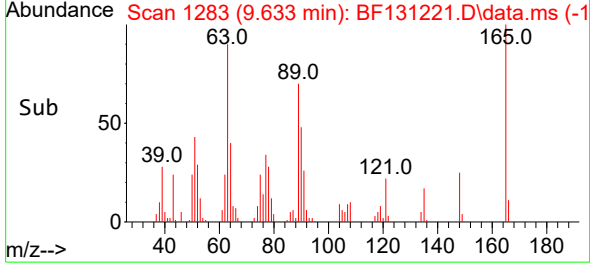


#51
 2,6-Dinitrotoluene
 Concen: 4.725 ng
 RT: 9.633 min Scan# 11
 Delta R.T. -0.012 min
 Lab File: BF131221.D
 Acq: 14 Nov 2022 12:33

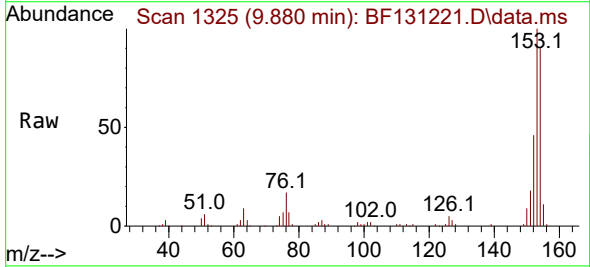
Instrument :
 BNA_F
 ClientSampleId :
 SSTDICC005



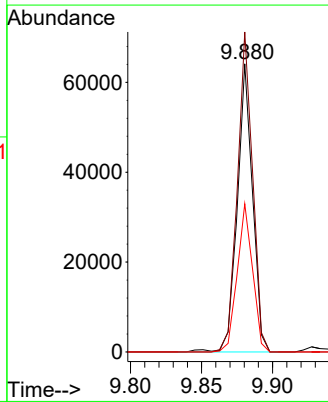
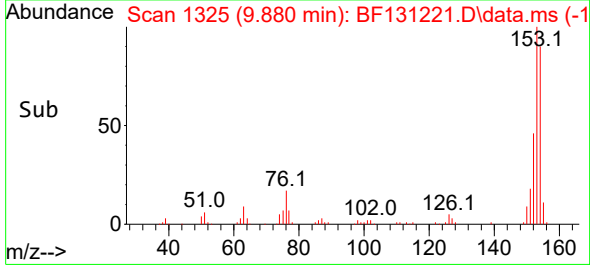
Tgt Ion:165 Resp: 10216
 Ion Ratio Lower Upper
 165 100
 63 89.7 62.6 94.0
 89 70.2 54.5 81.7

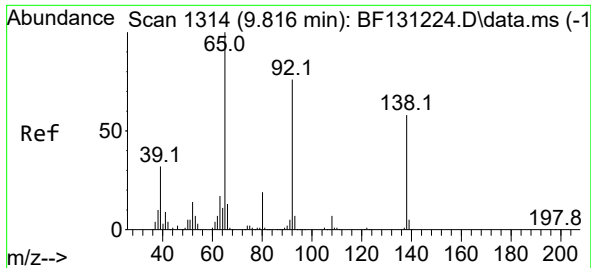


#52
 Acenaphthene
 Concen: 6.200 ng
 RT: 9.880 min Scan# 1325
 Delta R.T. -0.006 min
 Lab File: BF131221.D
 Acq: 14 Nov 2022 12:33



Tgt Ion:154 Resp: 48097
 Ion Ratio Lower Upper
 154 100
 153 111.1 88.6 133.0
 152 51.4 42.7 64.1

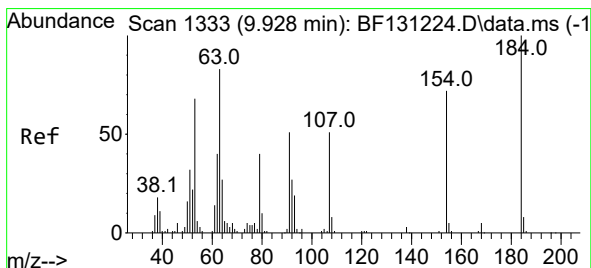
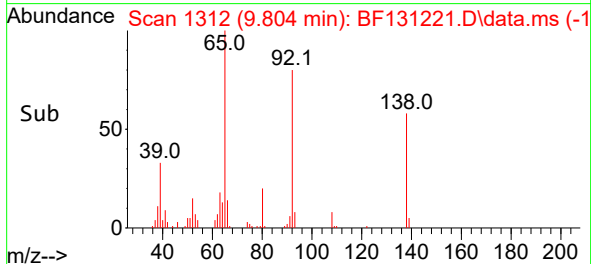
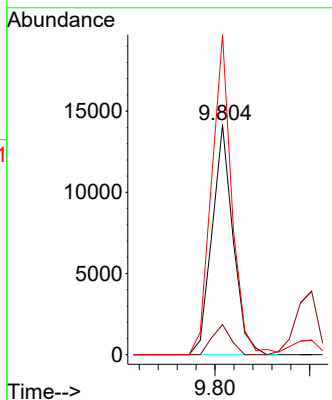
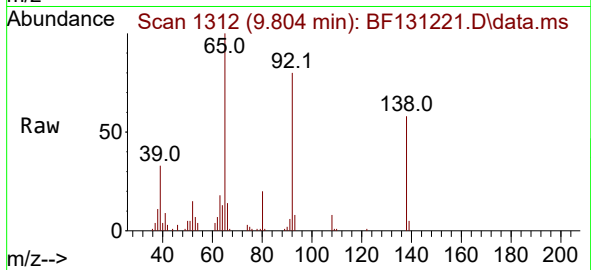




#53
 3-Nitroaniline
 Concen: 4.751 ng
 RT: 9.804 min Scan# 11
 Delta R.T. -0.012 min
 Lab File: BF131221.D
 Acq: 14 Nov 2022 12:33

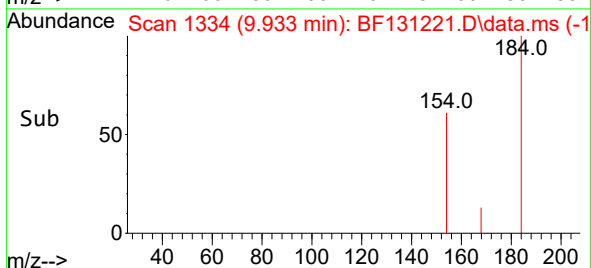
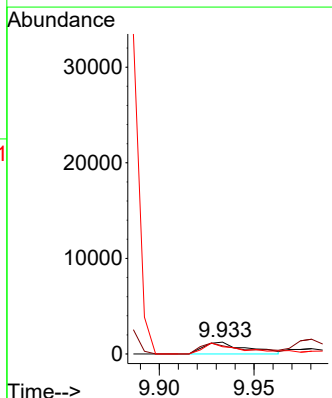
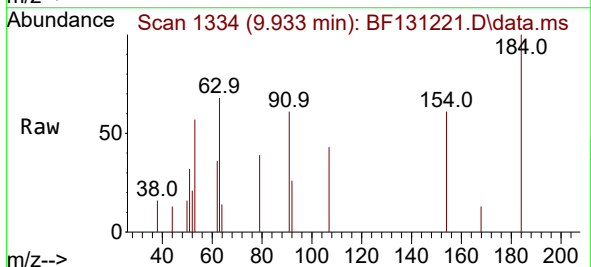
Instrument :
 BNA_F
 ClientSampleId :
 SSTDICC005

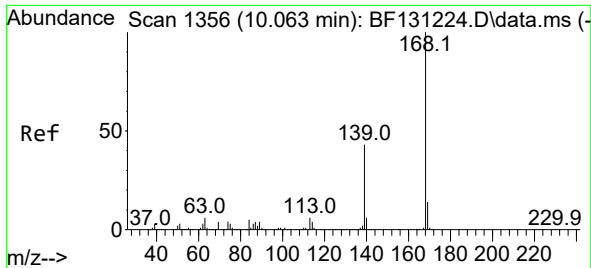
Tgt Ion:138 Resp: 10881
 Ion Ratio Lower Upper
 138 100
 108 13.1 9.8 14.6
 92 139.1 105.8 158.8



#54
 2,4-Dinitrophenol
 Concen: 2.163 ng
 RT: 9.933 min Scan# 1334
 Delta R.T. 0.005 min
 Lab File: BF131221.D
 Acq: 14 Nov 2022 12:33

Tgt Ion:184 Resp: 1958
 Ion Ratio Lower Upper
 184 100
 63 68.1 66.6 99.8
 154 60.9 58.9 88.3

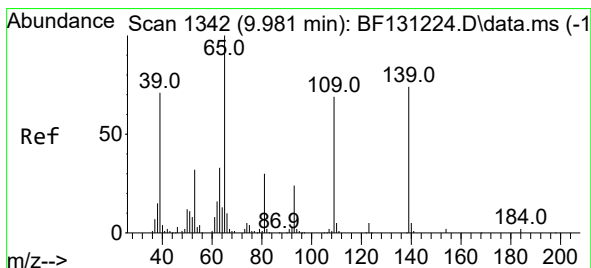
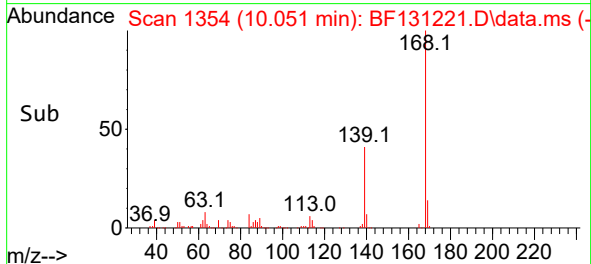
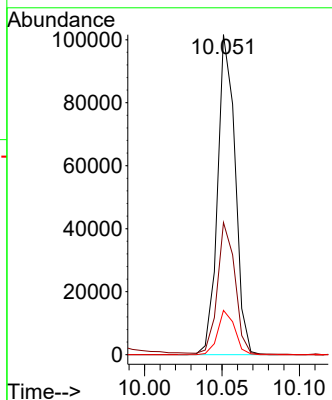
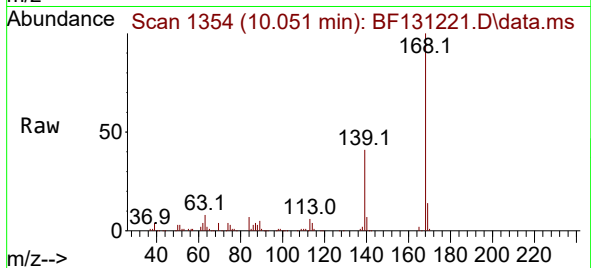




#55
 Dibenzofuran
 Concen: 6.795 ng
 RT: 10.051 min Scan# 11
 Delta R.T. -0.012 min
 Lab File: BF131221.D
 Acq: 14 Nov 2022 12:33

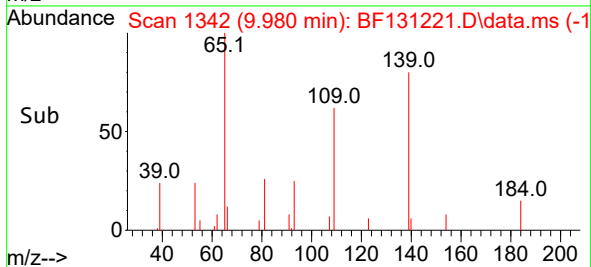
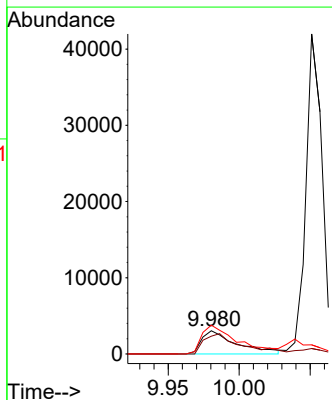
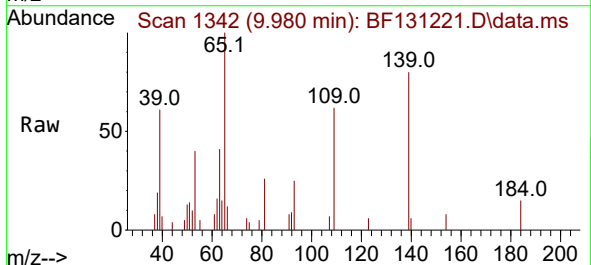
Instrument : BNA_F
 ClientSampleId : SSTDICC005

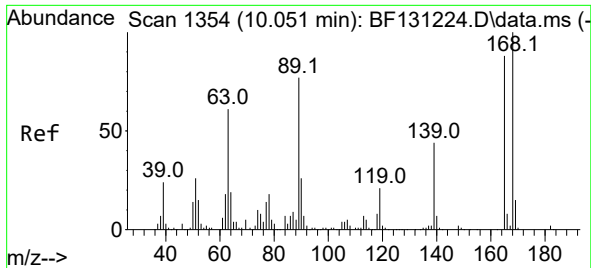
Tgt Ion	Resp	Lower	Upper
168	79926		
168	100		
139	41.3	34.8	52.2
169	13.9	11.3	16.9



#56
 4-Nitrophenol
 Concen: 4.276 ng
 RT: 9.980 min Scan# 1342
 Delta R.T. -0.000 min
 Lab File: BF131221.D
 Acq: 14 Nov 2022 12:33

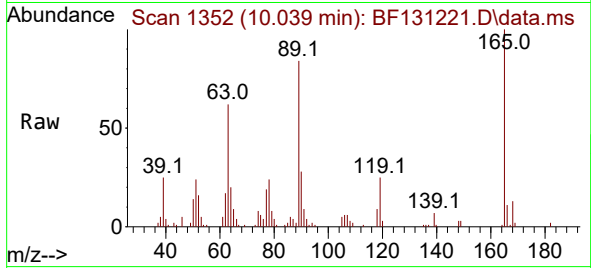
Tgt Ion	Resp	Lower	Upper
139	5214		
139	100		
109	76.9	73.1	113.1
65	124.4	116.5	156.5



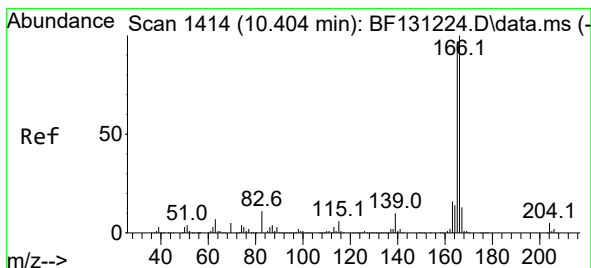
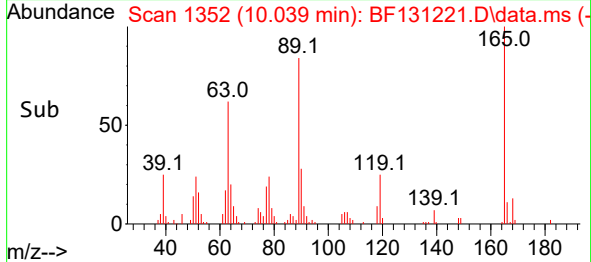
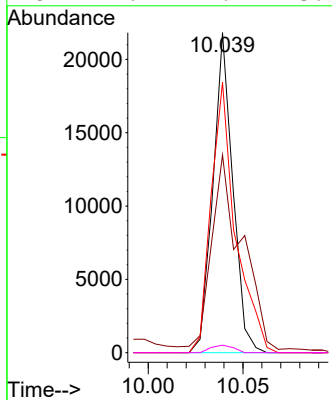


#57
 2,4-Dinitrotoluene
 Concen: 5.741 ng
 RT: 10.039 min Scan# 11
 Delta R.T. -0.012 min
 Lab File: BF131221.D
 Acq: 14 Nov 2022 12:33

Instrument :
 BNA_F
 ClientSampleId :
 SSTDICC005

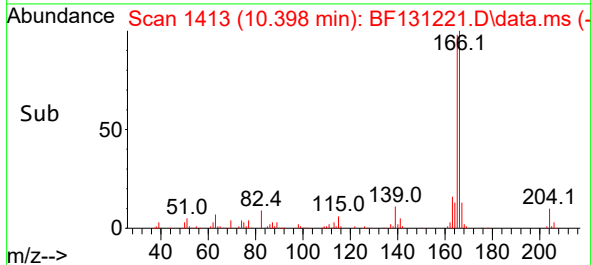
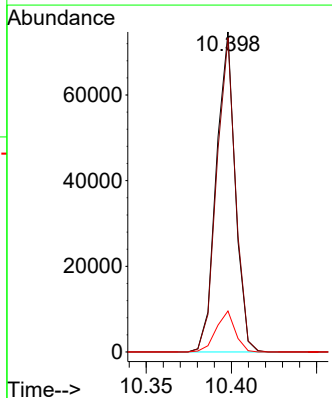
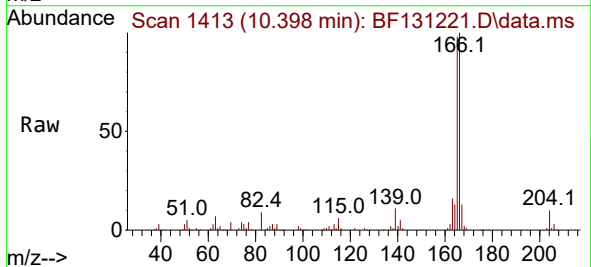


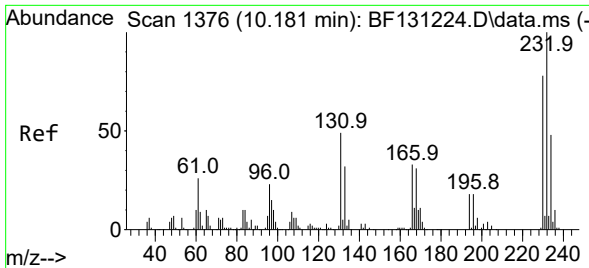
Tgt Ion:165 Resp: 15926
 Ion Ratio Lower Upper
 165 100
 63 61.8 56.6 84.8
 89 84.5 70.1 105.1
 182 2.4 2.2 3.2



#58
 Fluorene
 Concen: 5.789 ng
 RT: 10.398 min Scan# 1413
 Delta R.T. -0.006 min
 Lab File: BF131221.D
 Acq: 14 Nov 2022 12:33

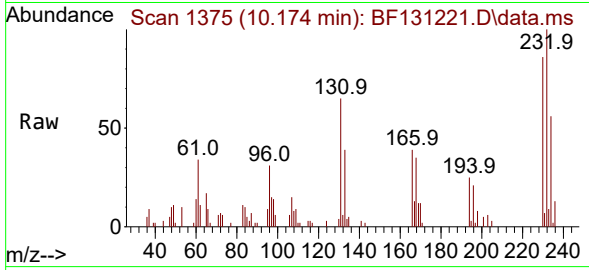
Tgt Ion:166 Resp: 57691
 Ion Ratio Lower Upper
 166 100
 165 98.2 77.7 116.5
 167 12.8 10.6 15.8



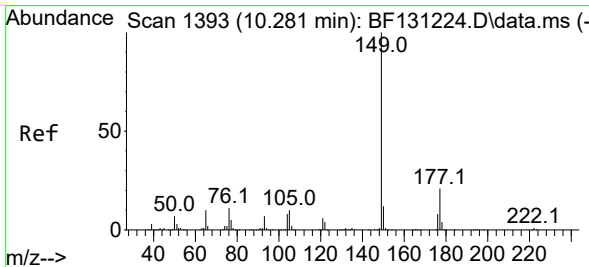
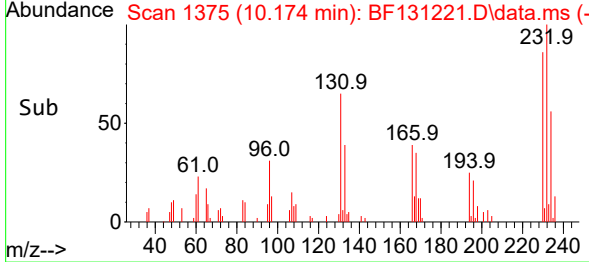
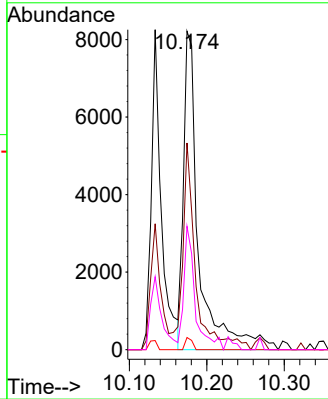


#59
 2,3,4,6-Tetrachlorophenol
 Concen: 4.622 ng
 RT: 10.174 min Scan# 111
 Delta R.T. -0.007 min
 Lab File: BF131221.D
 Acq: 14 Nov 2022 12:33

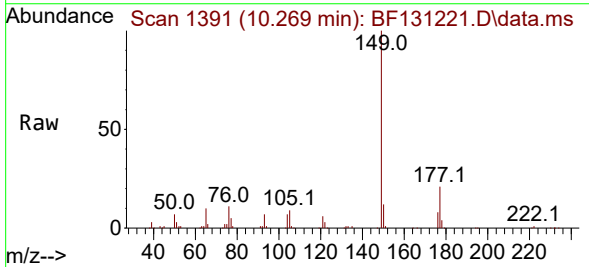
Instrument :
 BNA_F
 ClientSampleId :
 SSTDICC005



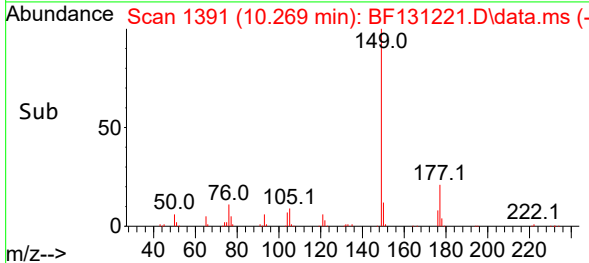
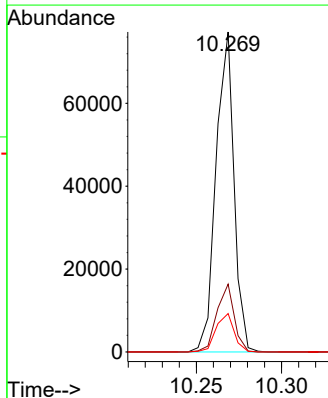
Tgt Ion:232 Resp: 11267
 Ion Ratio Lower Upper
 232 100
 131 44.6 40.6 60.8
 130 1.7 2.0 3.0#
 166 28.4 24.6 36.8

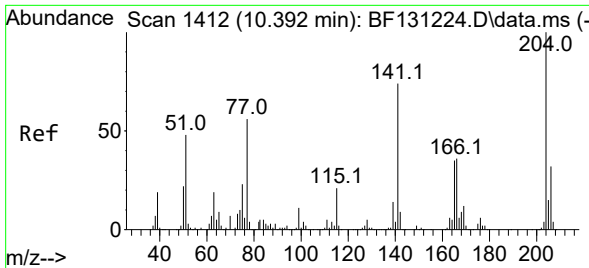


#60
 Diethylphthalate
 Concen: 5.416 ng
 RT: 10.269 min Scan# 1391
 Delta R.T. -0.012 min
 Lab File: BF131221.D
 Acq: 14 Nov 2022 12:33



Tgt Ion:149 Resp: 56687
 Ion Ratio Lower Upper
 149 100
 177 21.2 16.9 25.3
 150 12.0 9.9 14.9





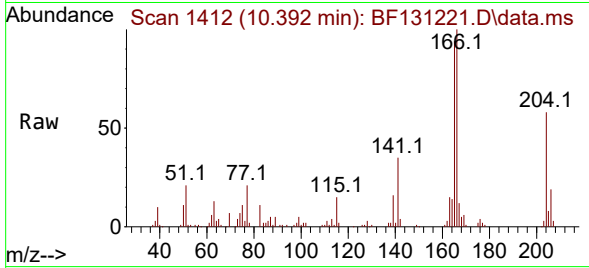
#61
 4-Chlorophenyl-phenylether
 Concen: 5.249 ng
 RT: 10.392 min Scan# 1412
 Delta R.T. 0.000 min
 Lab File: BF131221.D
 Acq: 14 Nov 2022 12:33

Instrument :

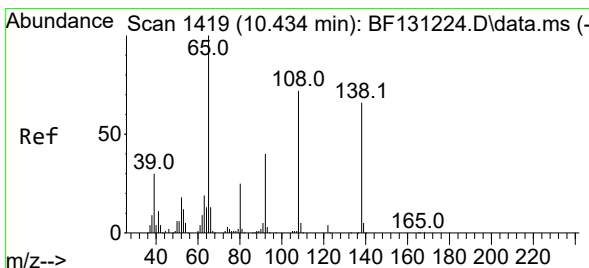
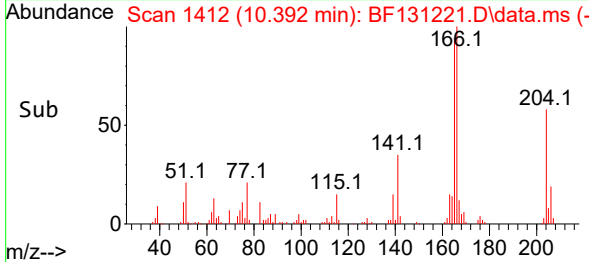
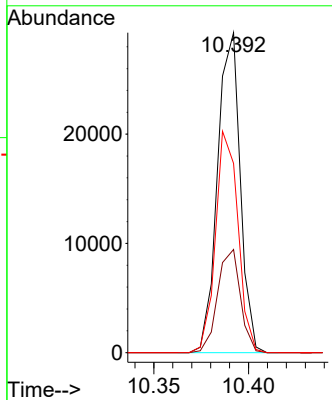
BNA_F

ClientSampleId :

SSTDICC005

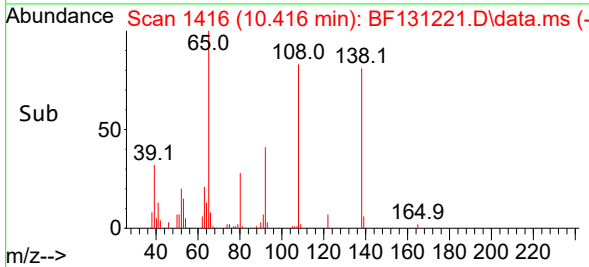
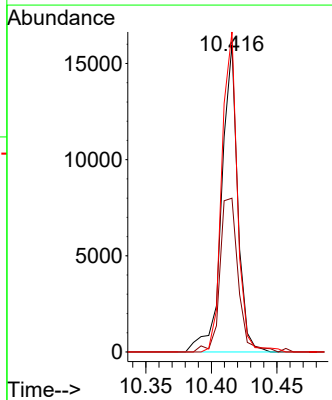
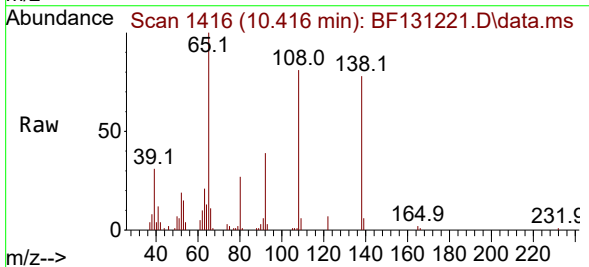


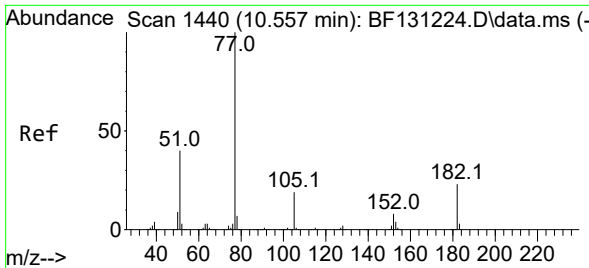
Tgt Ion:204 Resp: 24442
 Ion Ratio Lower Upper
 204 100
 206 32.3 25.7 38.5
 141 59.1 59.1 88.7



#62
 4-Nitroaniline
 Concen: 5.396 ng
 RT: 10.416 min Scan# 1416
 Delta R.T. -0.018 min
 Lab File: BF131221.D
 Acq: 14 Nov 2022 12:33

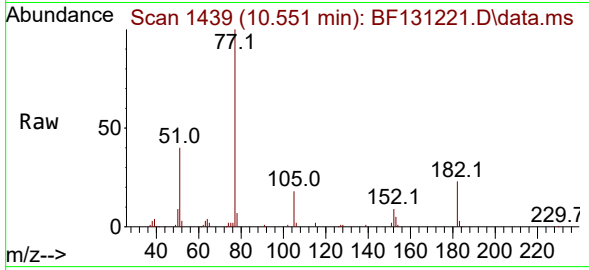
Tgt Ion:138 Resp: 13556
 Ion Ratio Lower Upper
 138 100
 92 50.0 40.7 80.7
 108 104.1 89.2 129.2





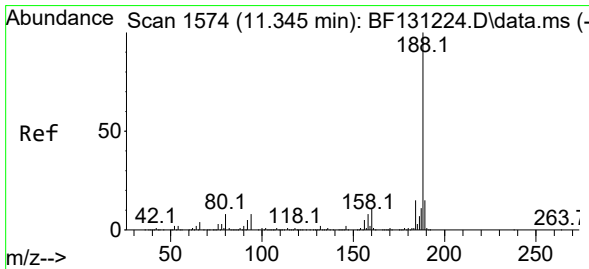
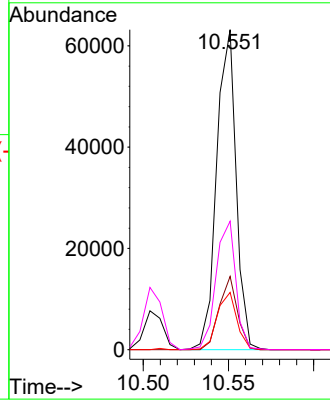
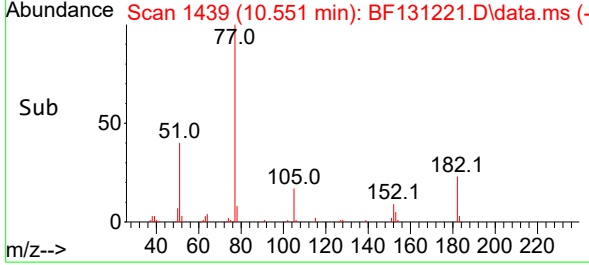
#63
 Azobenzene
 Concen: 4.659 ng
 RT: 10.551 min Scan# 14
 Delta R.T. -0.006 min
 Lab File: BF131221.D
 Acq: 14 Nov 2022 12:33

Instrument :
 BNA_F
 ClientSampleId :
 SSTDICC005

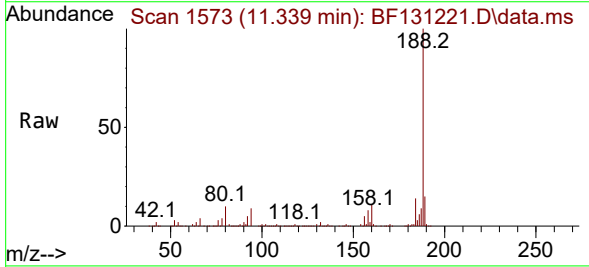


Tgt Ion: 77 Resp: 50199

Ion	Ratio	Lower	Upper
77	100		
182	22.9	2.9	42.9
105	17.9	0.0	38.7
51	40.1	20.5	60.5

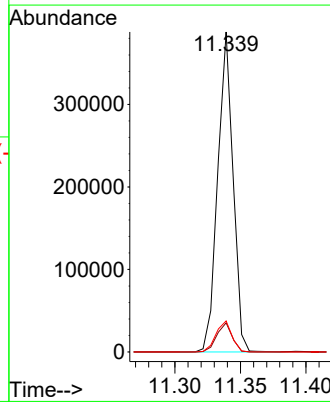
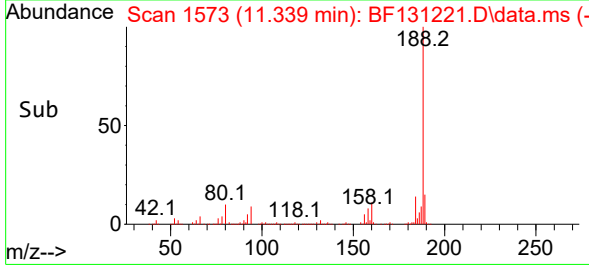


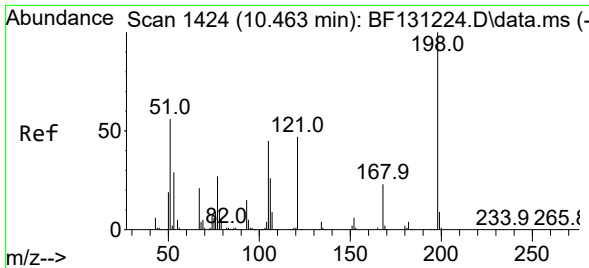
#64
 Phenanthrene-d10
 Concen: 20.000 ng
 RT: 11.339 min Scan# 1573
 Delta R.T. -0.006 min
 Lab File: BF131221.D
 Acq: 14 Nov 2022 12:33



Tgt Ion: 188 Resp: 315189

Ion	Ratio	Lower	Upper
188	100		
94	9.1	6.6	10.0
80	9.7	6.7	10.1

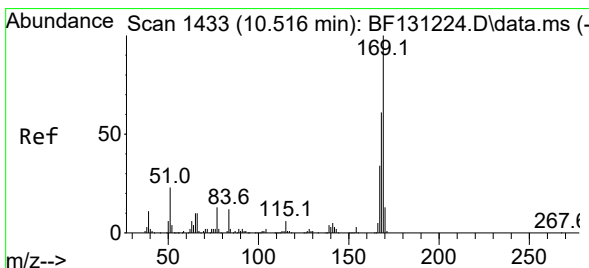
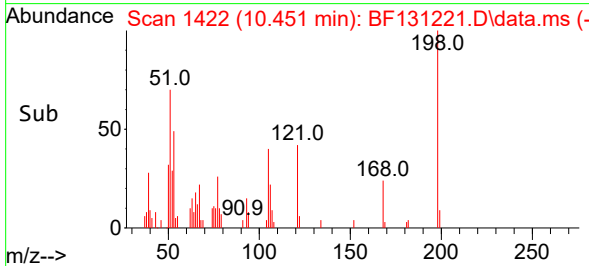
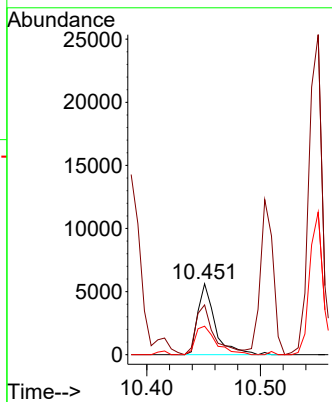
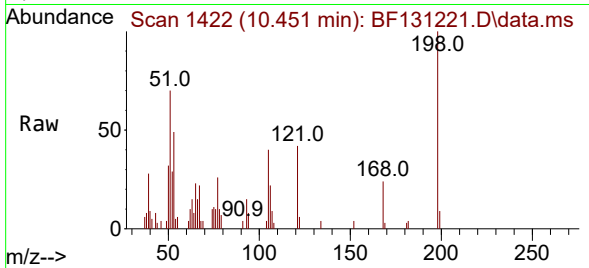




#65
 4,6-Dinitro-2-methylphenol
 Concen: 2.483 ng
 RT: 10.451 min Scan# 1422
 Delta R.T. -0.012 min
 Lab File: BF131221.D
 Acq: 14 Nov 2022 12:33

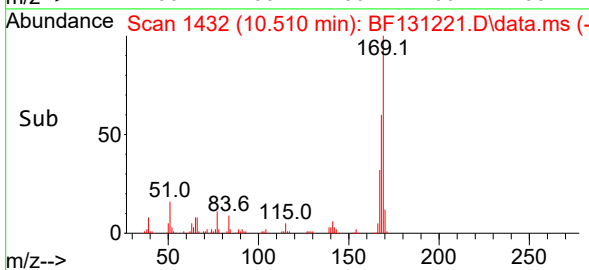
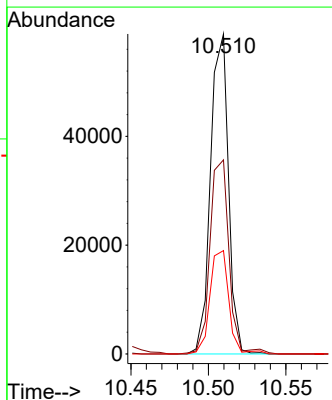
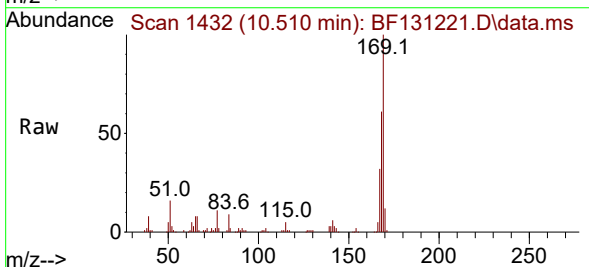
Instrument :
 BNA_F
 ClientSampleId :
 SSTDICC005

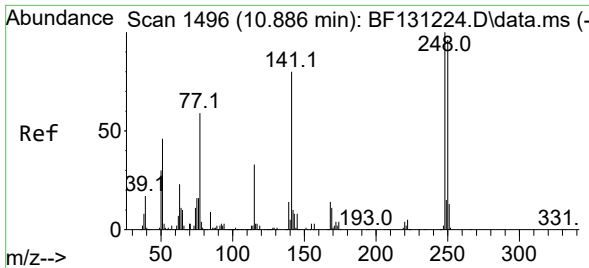
Tgt Ion	Resp	Ion Ratio	Lower	Upper
198	5928	100		
51		70.2	45.2	85.2
105		40.2	26.9	66.9



#66
 n-Nitrosodiphenylamine
 Concen: 3.879 ng
 RT: 10.510 min Scan# 1432
 Delta R.T. -0.006 min
 Lab File: BF131221.D
 Acq: 14 Nov 2022 12:33

Tgt Ion	Resp	Ion Ratio	Lower	Upper
169	47291	100		
168		60.6	48.6	73.0
167		32.3	27.2	40.8





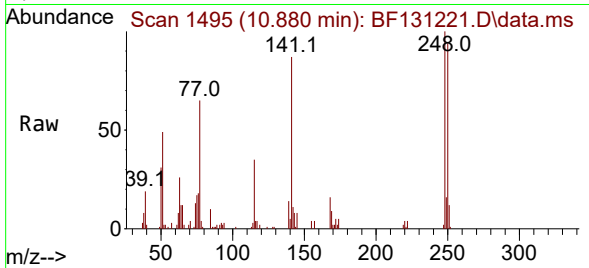
#67
 4-Bromophenyl-phenylether
 Concen: 4.794 ng
 RT: 10.880 min Scan# 1495
 Delta R.T. -0.006 min
 Lab File: BF131221.D
 Acq: 14 Nov 2022 12:33

Instrument :

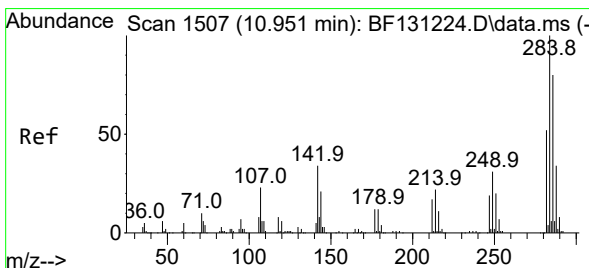
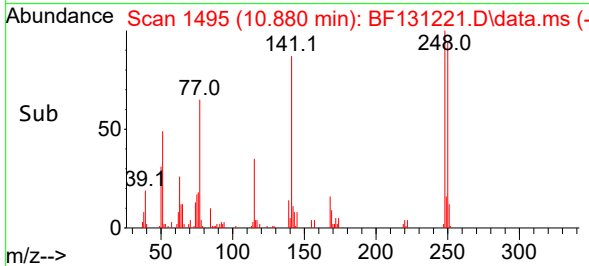
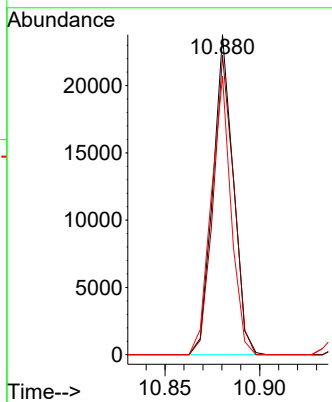
BNA_F

ClientSampleId :

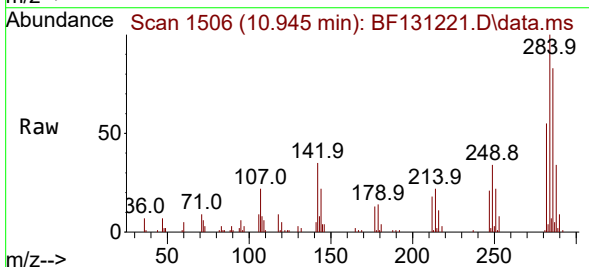
SSTDICC005



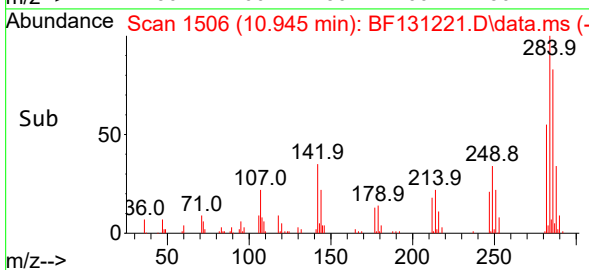
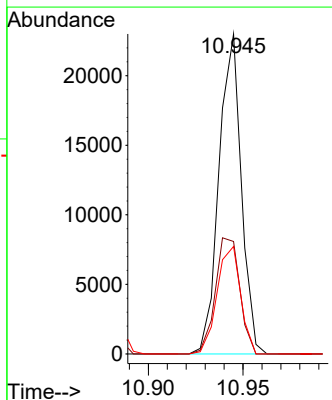
Tgt Ion:248 Resp: 17866
 Ion Ratio Lower Upper
 248 100
 250 93.5 76.7 115.1
 141 87.1 64.3 96.5

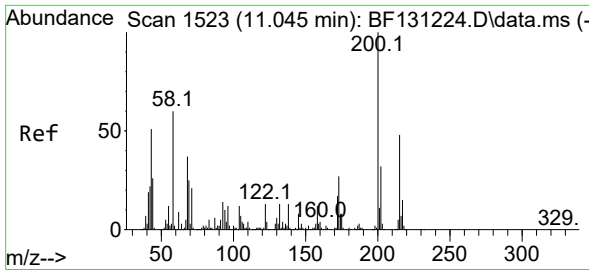


#68
 Hexachlorobenzene
 Concen: 4.615 ng
 RT: 10.945 min Scan# 1506
 Delta R.T. -0.006 min
 Lab File: BF131221.D
 Acq: 14 Nov 2022 12:33



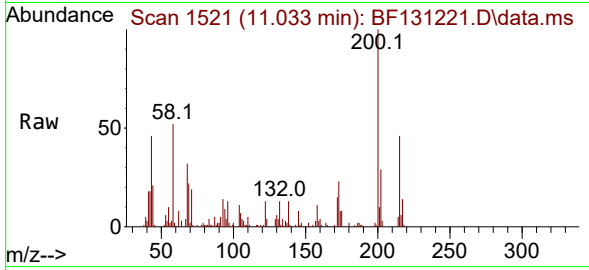
Tgt Ion:284 Resp: 18848
 Ion Ratio Lower Upper
 284 100
 142 35.2 27.0 40.4
 249 33.6 24.6 37.0



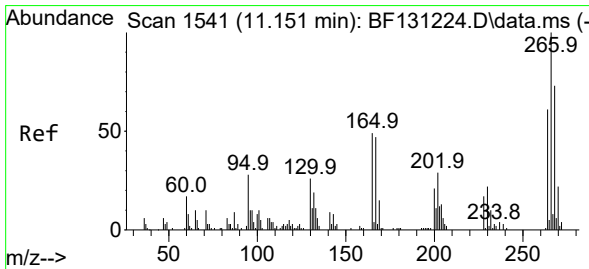
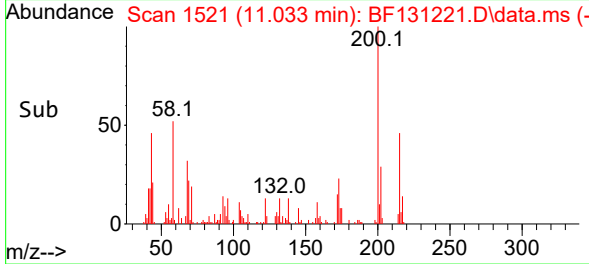
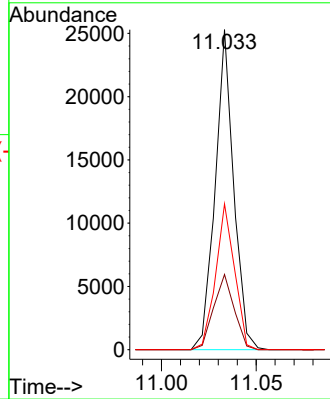


#69
 Atrazine
 Concen: 4.936 ng
 RT: 11.033 min Scan# 11
 Delta R.T. -0.012 min
 Lab File: BF131221.D
 Acq: 14 Nov 2022 12:33

Instrument :
 BNA_F
 ClientSampleId :
 SSTDICC005

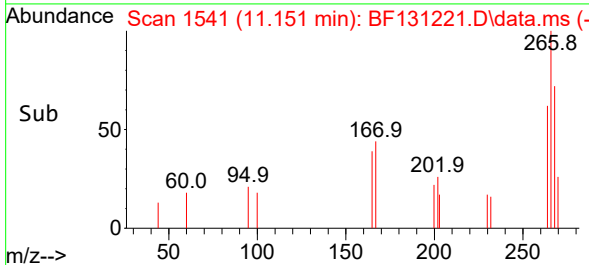
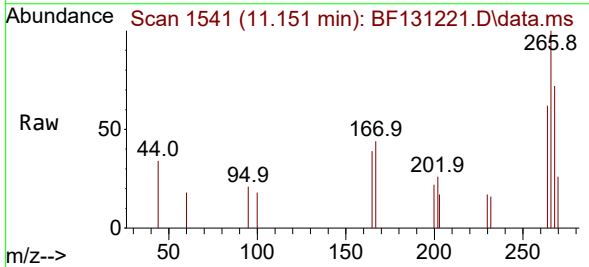
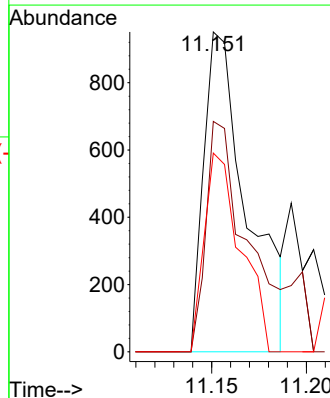


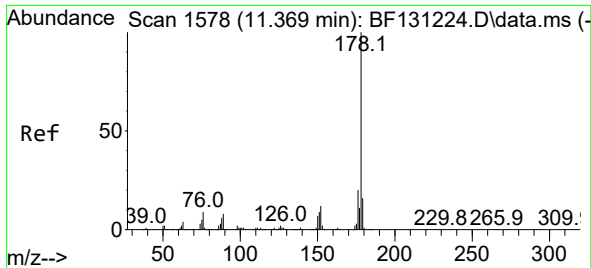
Tgt Ion:200 Resp: 17202
 Ion Ratio Lower Upper
 200 100
 173 23.5 6.6 46.6
 215 45.6 28.1 68.1



#70
 Pentachlorophenol
 Concen: 1.257 ng
 RT: 11.151 min Scan# 1541
 Delta R.T. -0.000 min
 Lab File: BF131221.D
 Acq: 14 Nov 2022 12:33

Tgt Ion:266 Resp: 1515
 Ion Ratio Lower Upper
 266 100
 268 72.0 58.3 87.5
 264 62.1 49.0 73.4



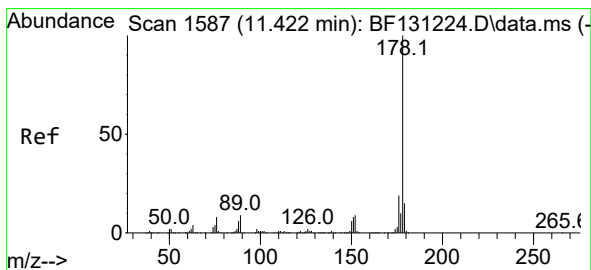
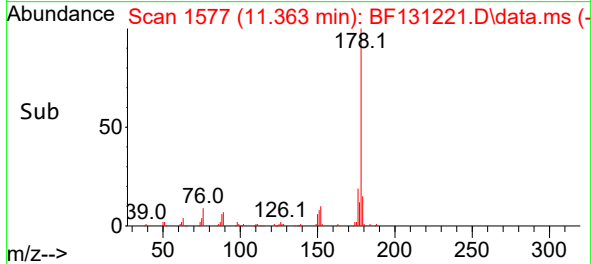
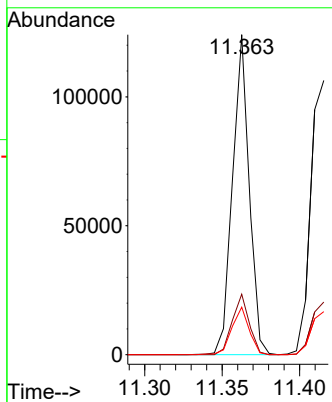
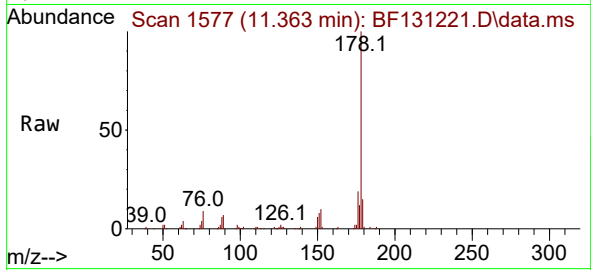


#71
 Phenanthrene
 Concen: 5.118 ng
 RT: 11.363 min Scan# 11
 Delta R.T. -0.006 min
 Lab File: BF131221.D
 Acq: 14 Nov 2022 12:33

Instrument :
 BNA_F
 ClientSampleId :
 SSTDICC005

Tgt Ion:178 Resp: 92980

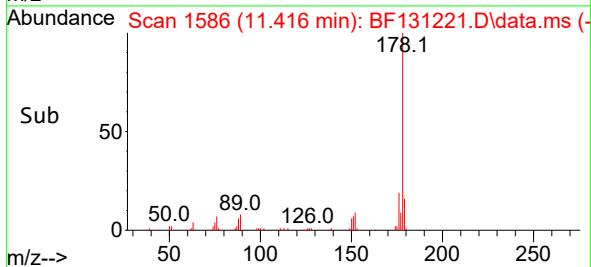
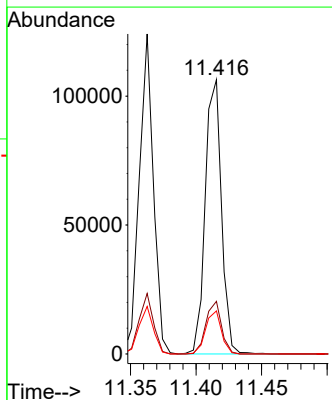
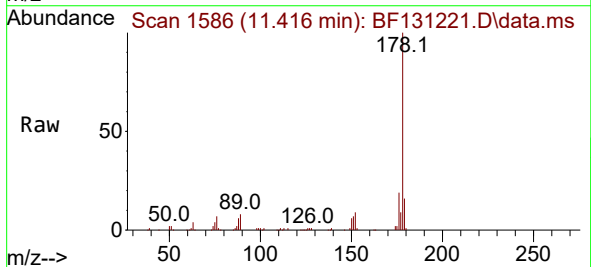
Ion	Ratio	Lower	Upper
178	100		
176	18.9	15.6	23.4
179	14.9	12.6	18.8

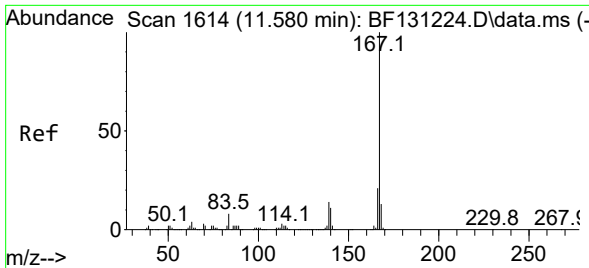


#72
 Anthracene
 Concen: 5.288 ng
 RT: 11.416 min Scan# 1586
 Delta R.T. -0.006 min
 Lab File: BF131221.D
 Acq: 14 Nov 2022 12:33

Tgt Ion:178 Resp: 92040

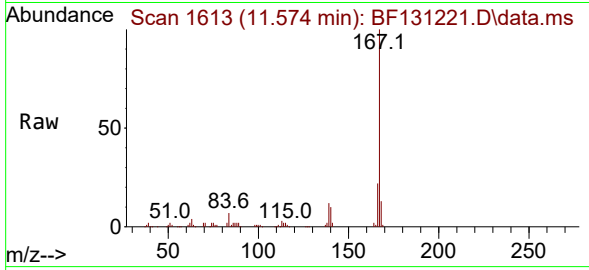
Ion	Ratio	Lower	Upper
178	100		
176	19.2	15.3	22.9
179	15.7	12.3	18.5





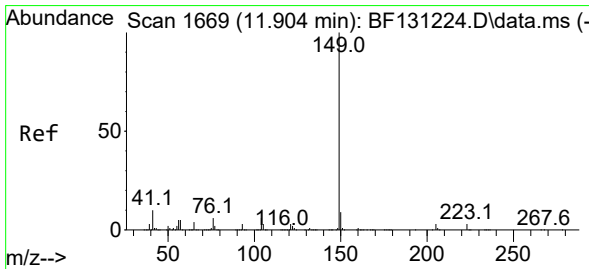
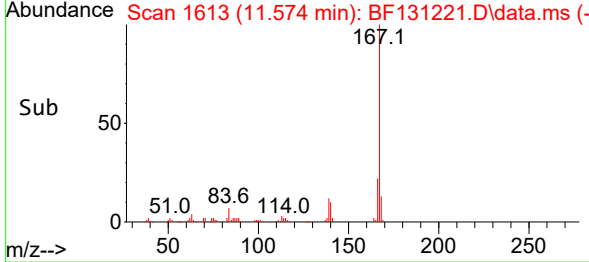
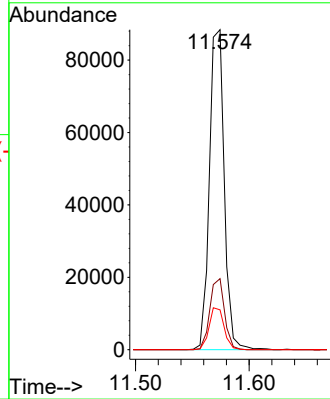
#73
 Carbazole
 Concen: 4.808 ng
 RT: 11.574 min Scan# 1613
 Delta R.T. -0.006 min
 Lab File: BF131221.D
 Acq: 14 Nov 2022 12:33

Instrument : BNA_F
 Client Sample Id : BF131221.D
 SSTDICC005



Tgt Ion:167 Resp: 80086

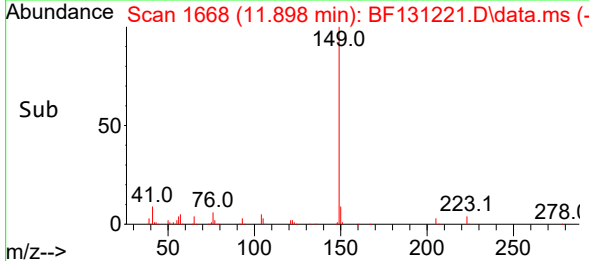
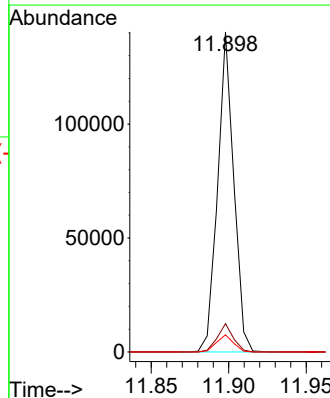
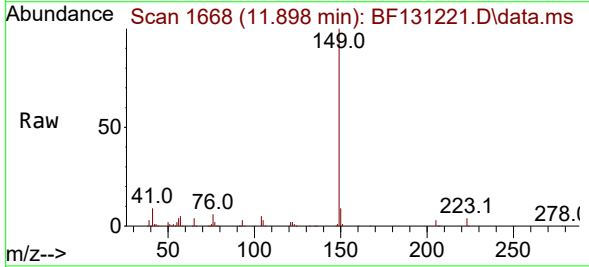
Ion	Ratio	Lower	Upper
167	100		
166	22.2	17.0	25.6
139	12.5	11.0	16.6

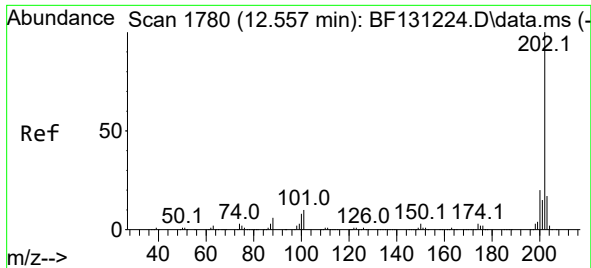


#74
 Di-n-butylphthalate
 Concen: 4.957 ng
 RT: 11.898 min Scan# 1668
 Delta R.T. -0.006 min
 Lab File: BF131221.D
 Acq: 14 Nov 2022 12:33

Tgt Ion:149 Resp: 101745

Ion	Ratio	Lower	Upper
149	100		
150	8.8	7.5	11.3
104	5.3	4.6	6.8





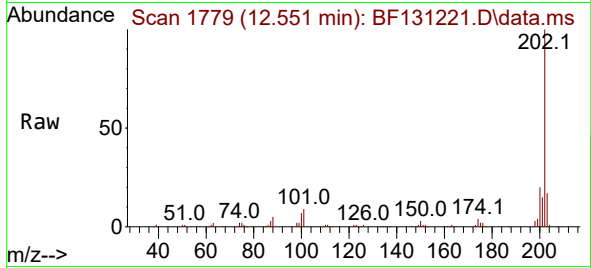
#75
 Fluoranthene
 Concen: 3.945 ng
 RT: 12.551 min Scan# 1779
 Delta R.T. -0.006 min
 Lab File: BF131221.D
 Acq: 14 Nov 2022 12:33

Instrument :

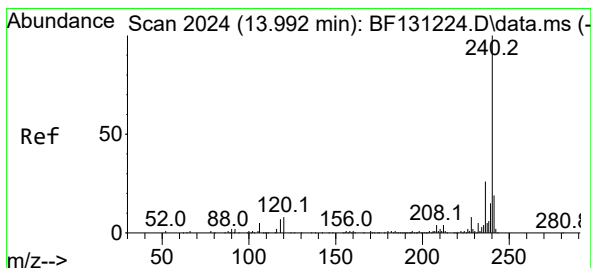
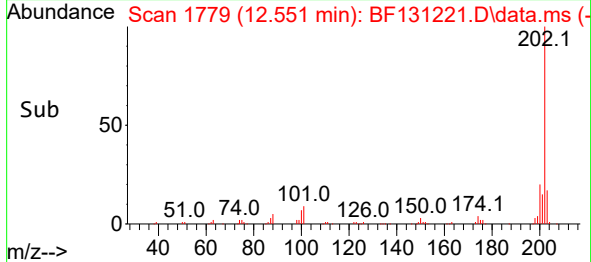
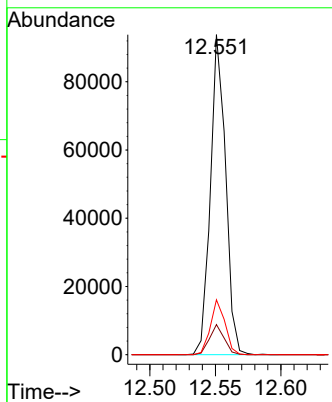
BNA_F

ClientSampleId :

SSTDICC005

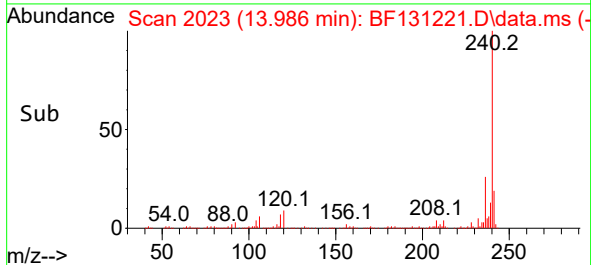
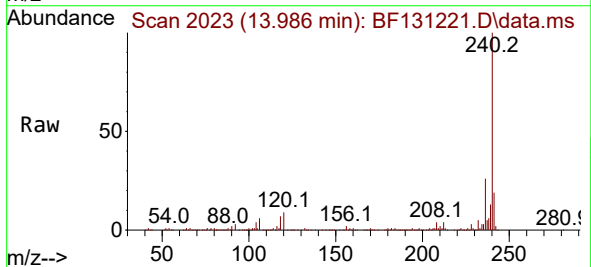
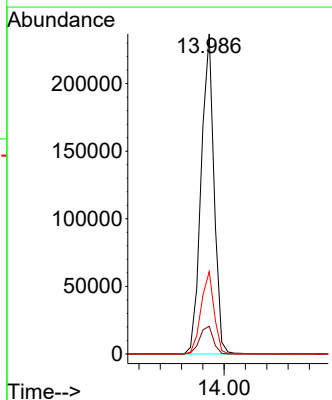


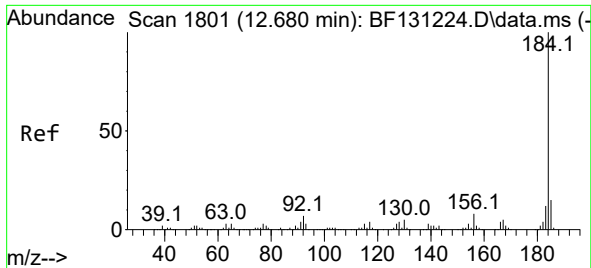
Tgt Ion:202 Resp: 75623
 Ion Ratio Lower Upper
 202 100
 101 9.4 0.0 30.3
 203 17.2 0.0 37.3



#76
 Chrysene-d12
 Concen: 20.000 ng
 RT: 13.986 min Scan# 2023
 Delta R.T. -0.006 min
 Lab File: BF131221.D
 Acq: 14 Nov 2022 12:33

Tgt Ion:240 Resp: 199388
 Ion Ratio Lower Upper
 240 100
 120 8.7 6.5 9.7
 236 25.8 21.1 31.7

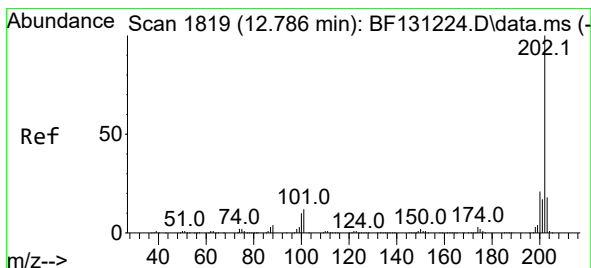
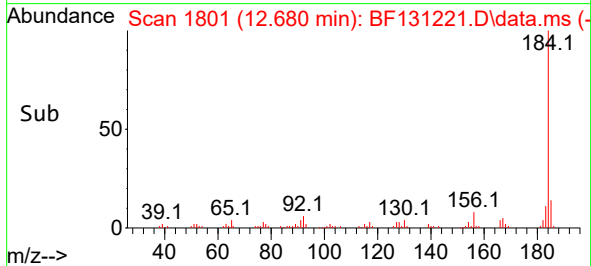
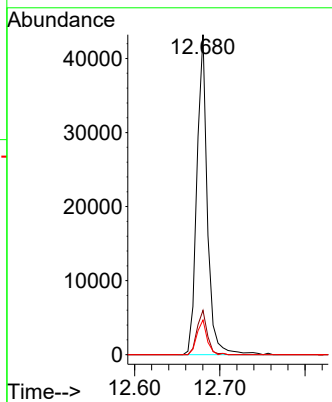
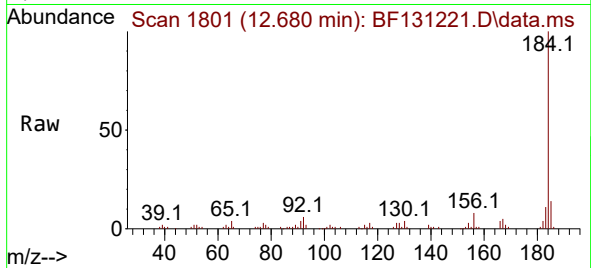




#77
 Benzidine
 Concen: 7.391 ng
 RT: 12.680 min Scan# 1181
 Delta R.T. 0.000 min
 Lab File: BF131221.D
 Acq: 14 Nov 2022 12:33

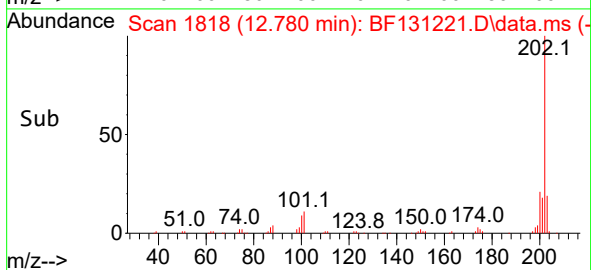
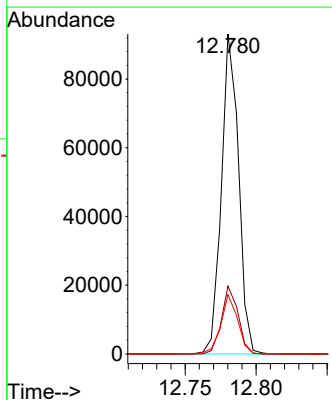
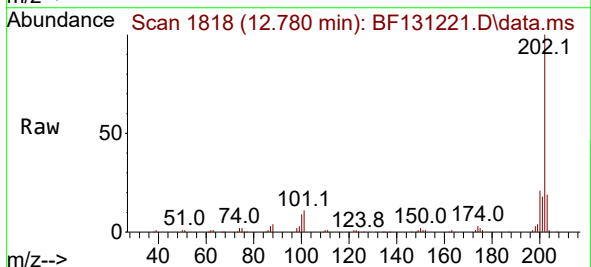
Instrument :
 BNA_F
 ClientSampleId :
 SSTDICC005

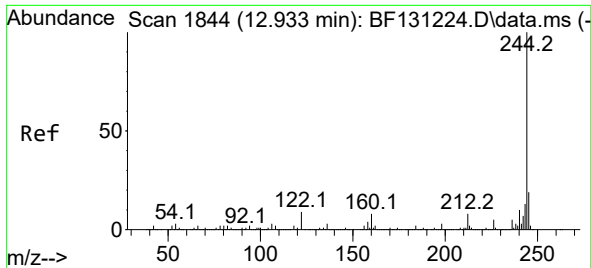
Tgt Ion:184 Resp: 36984
 Ion Ratio Lower Upper
 184 100
 185 13.8 11.9 17.9
 183 10.9 9.4 14.2



#78
 Pyrene
 Concen: 4.592 ng
 RT: 12.780 min Scan# 1818
 Delta R.T. -0.006 min
 Lab File: BF131221.D
 Acq: 14 Nov 2022 12:33

Tgt Ion:202 Resp: 77827
 Ion Ratio Lower Upper
 202 100
 200 21.2 16.9 25.3
 203 18.6 14.5 21.7





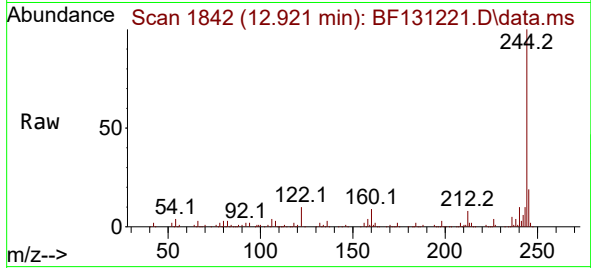
#79
 Terphenyl-d14
 Concen: 9.486 ng
 RT: 12.921 min Scan# 1842
 Delta R.T. -0.012 min
 Lab File: BF131221.D
 Acq: 14 Nov 2022 12:33

Instrument :

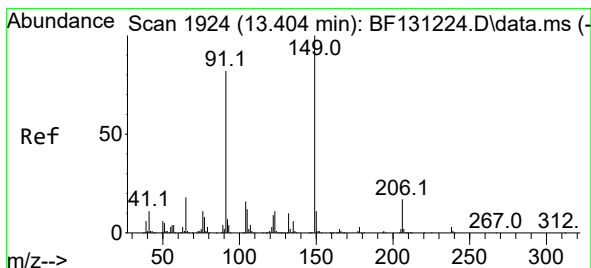
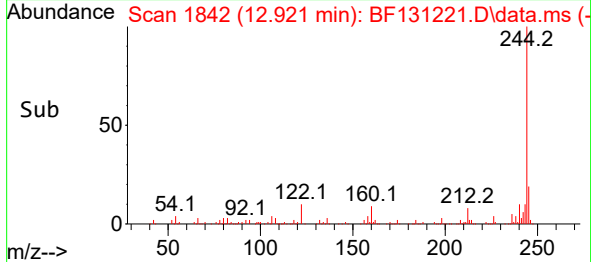
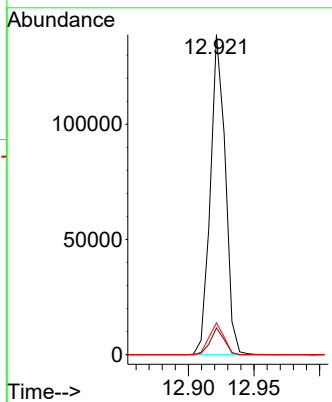
BNA_F

ClientSampleId :

SSTDICC005

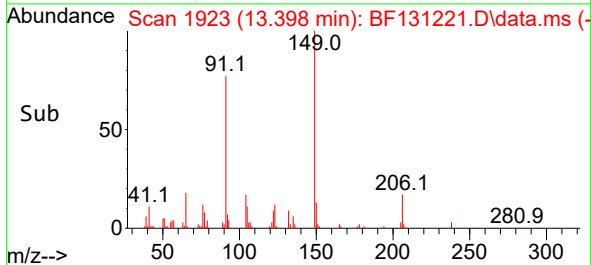
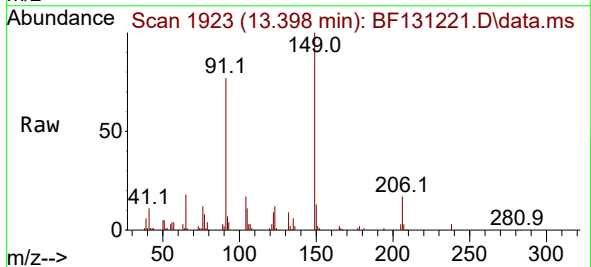
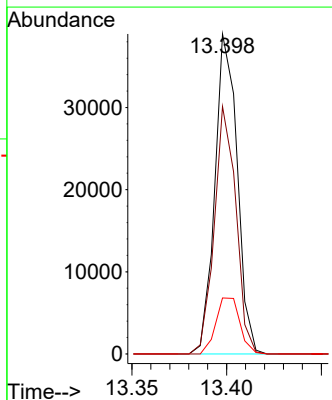


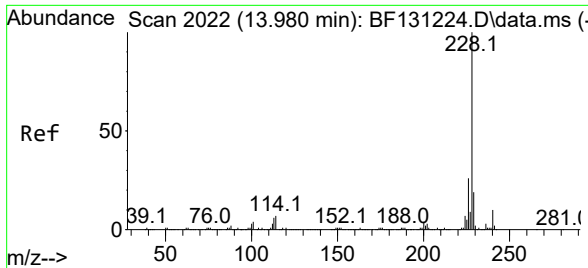
Tgt Ion:244 Resp: 110242
 Ion Ratio Lower Upper
 244 100
 212 8.3 6.2 9.4
 122 9.9 7.0 10.4



#80
 Butylbenzylphthalate
 Concen: 4.707 ng
 RT: 13.398 min Scan# 1923
 Delta R.T. -0.006 min
 Lab File: BF131221.D
 Acq: 14 Nov 2022 12:33

Tgt Ion:149 Resp: 31981
 Ion Ratio Lower Upper
 149 100
 91 77.4 65.5 98.3
 206 17.5 13.4 20.0

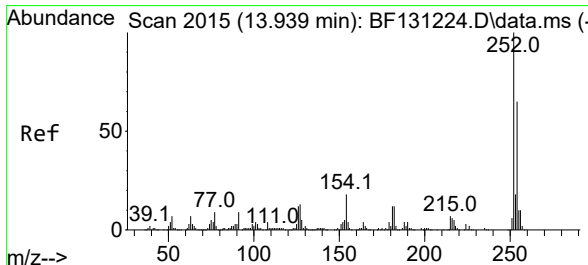
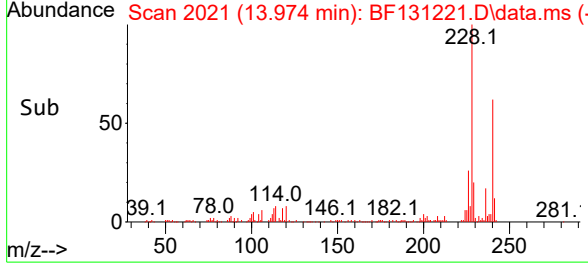
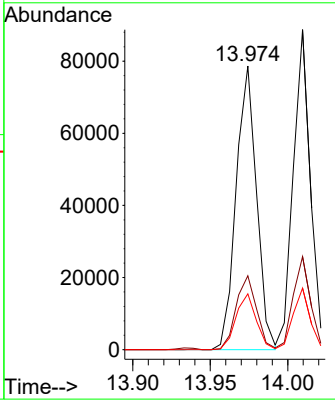
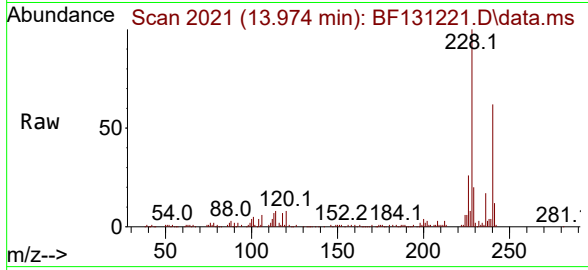




#81
 Benzo(a)anthracene
 Concen: 5.088 ng
 RT: 13.974 min Scan# 2021
 Delta R.T. -0.006 min
 Lab File: BF131221.D
 Acq: 14 Nov 2022 12:33

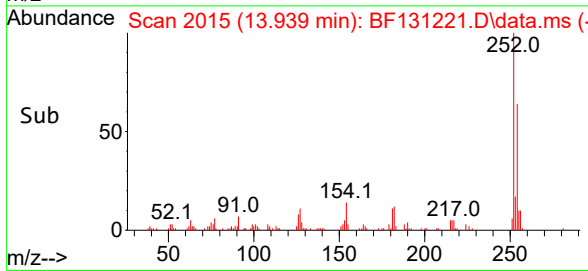
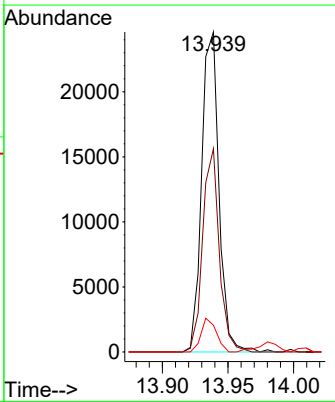
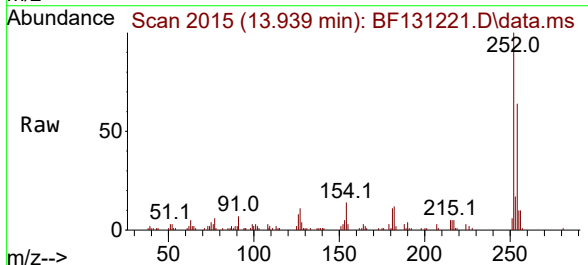
Instrument : BNA_F
 ClientSampleId : SSTDICC005

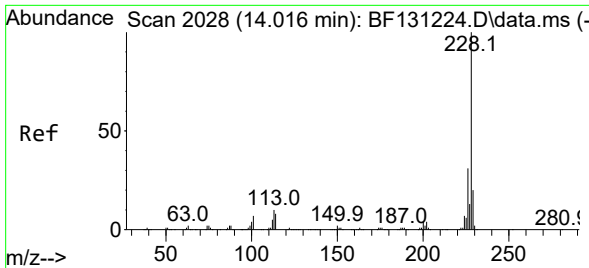
Tgt Ion	Resp	Lower	Upper
228	72091		
226	26.0	21.1	31.7
229	19.7	15.3	22.9



#82
 3,3'-Dichlorobenzidine
 Concen: 5.495 ng
 RT: 13.939 min Scan# 2015
 Delta R.T. -0.000 min
 Lab File: BF131221.D
 Acq: 14 Nov 2022 12:33

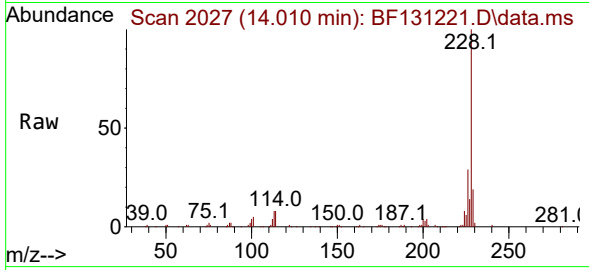
Tgt Ion	Resp	Lower	Upper
252	22663		
254	63.5	52.3	78.5
126	8.3	9.8	14.8#



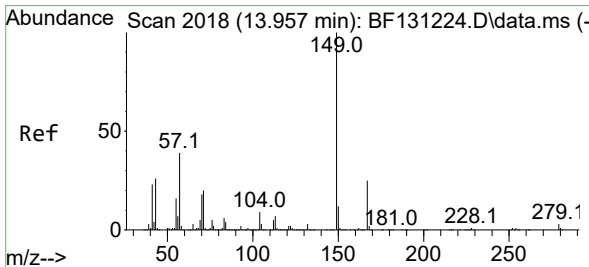
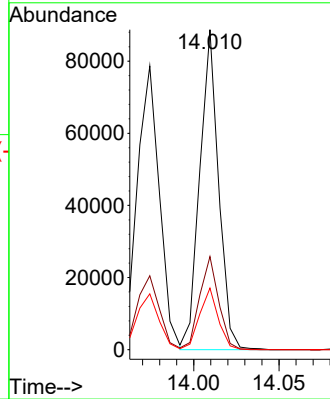
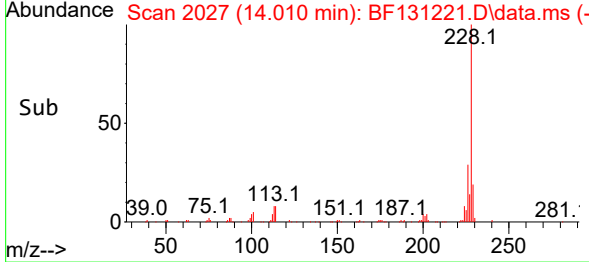


#83
 Chrysene
 Concen: 5.054 ng
 RT: 14.010 min Scan# 2027
 Delta R.T. -0.006 min
 Lab File: BF131221.D
 Acq: 14 Nov 2022 12:33

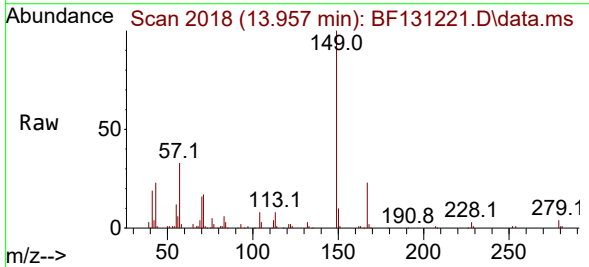
Instrument : BNA_F
 ClientSampleId : SSTDICC005



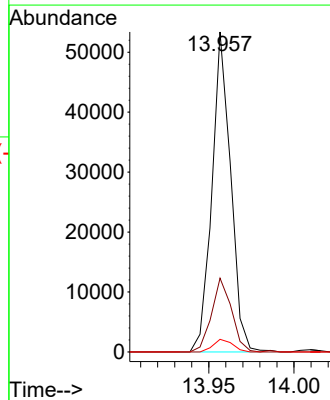
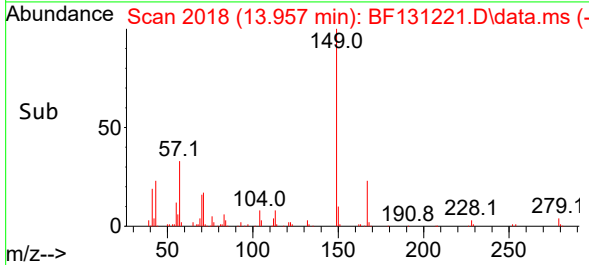
Tgt Ion: 228 Resp: 68257
 Ion Ratio Lower Upper
 228 100
 226 29.1 24.6 37.0
 229 19.3 15.8 23.8

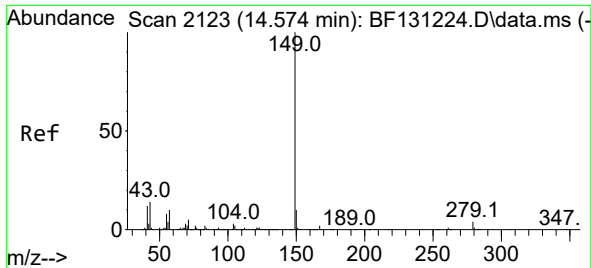


#84
 Bis(2-ethylhexyl)phthalate
 Concen: 4.720 ng
 RT: 13.957 min Scan# 2018
 Delta R.T. -0.000 min
 Lab File: BF131221.D
 Acq: 14 Nov 2022 12:33



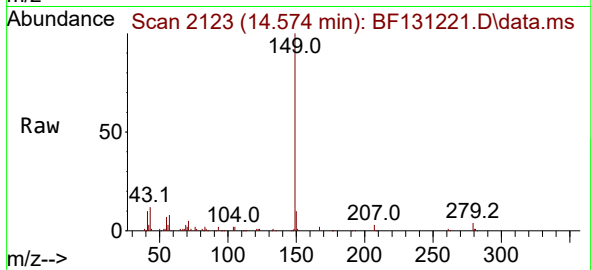
Tgt Ion: 149 Resp: 40779
 Ion Ratio Lower Upper
 149 100
 167 23.1 20.2 30.2
 279 4.0 2.7 4.1



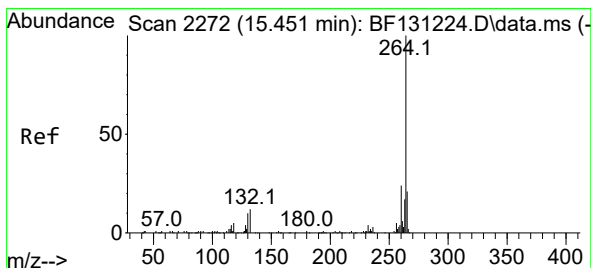
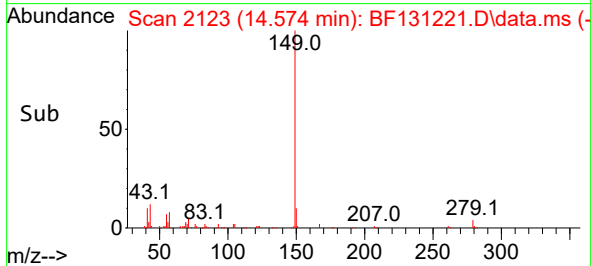
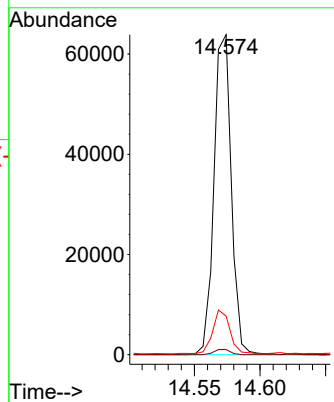


#85
 Di-n-octyl phthalate
 Concen: 4.674 ng
 RT: 14.574 min Scan# 2123
 Delta R.T. 0.000 min
 Lab File: BF131221.D
 Acq: 14 Nov 2022 12:33

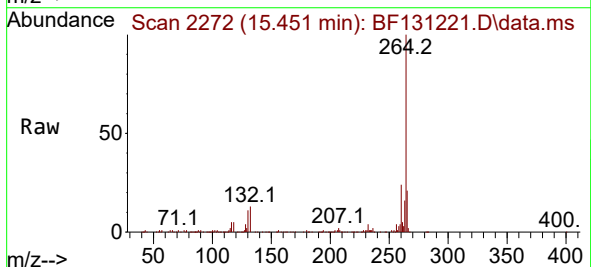
Instrument :
 BNA_F
 ClientSampleId :
 SSTDICC005



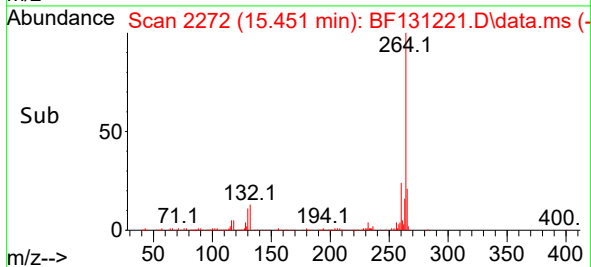
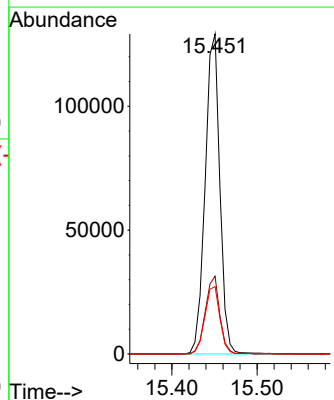
Tgt Ion:149 Resp: 58759
 Ion Ratio Lower Upper
 149 100
 167 1.6 1.2 1.8
 43 13.5 11.4 17.0

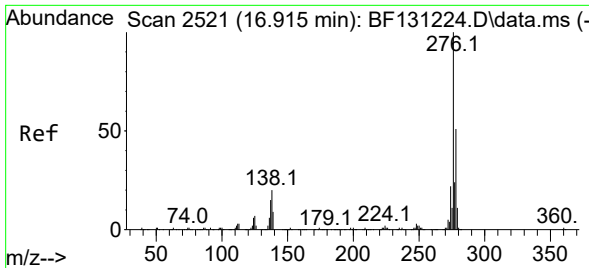


#86
 Perylene-d12
 Concen: 20.000 ng
 RT: 15.451 min Scan# 2272
 Delta R.T. -0.000 min
 Lab File: BF131221.D
 Acq: 14 Nov 2022 12:33



Tgt Ion:264 Resp: 154427
 Ion Ratio Lower Upper
 264 100
 260 24.3 19.0 28.4
 265 21.0 17.0 25.4

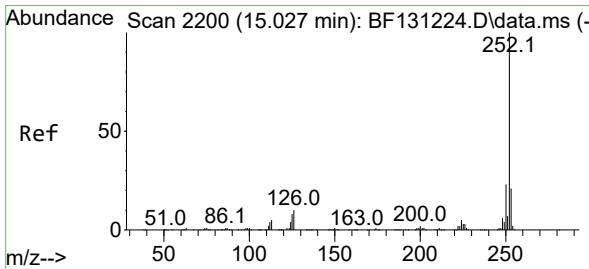
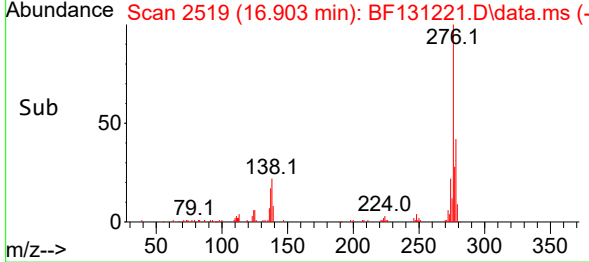
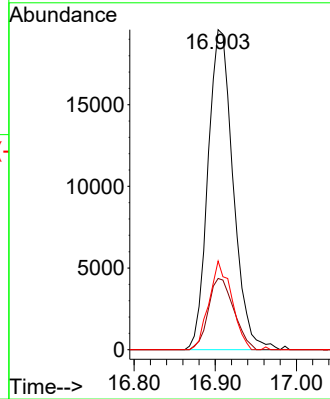
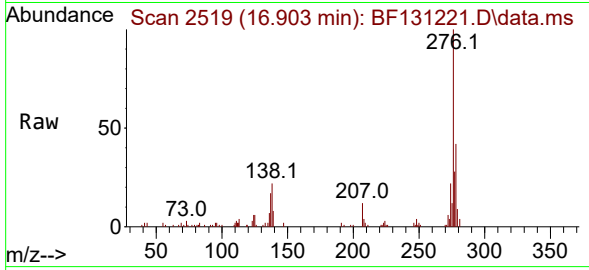




#87
 Indeno(1,2,3-cd)pyrene
 Concen: 3.976 ng
 RT: 16.903 min Scan# 2198
 Delta R.T. -0.012 min
 Lab File: BF131221.D
 Acq: 14 Nov 2022 12:33

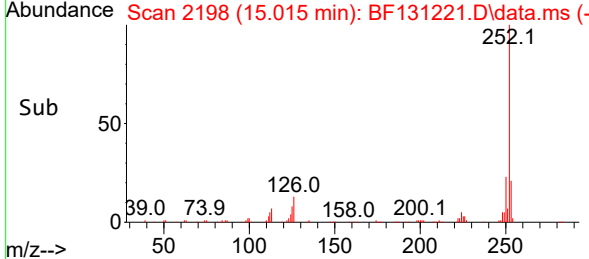
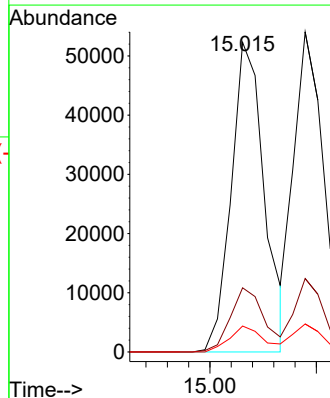
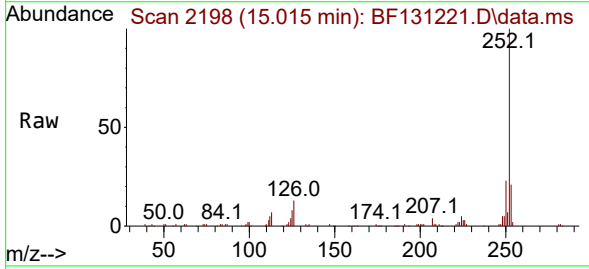
Instrument : BNA_F
 ClientSampleId : SSTDICC005

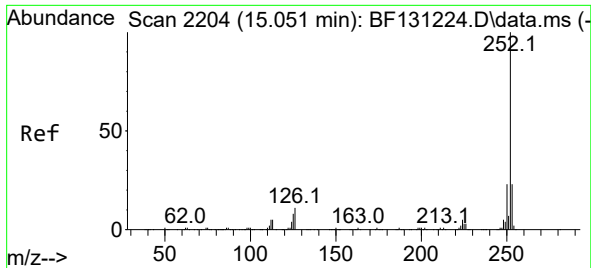
Tgt Ion	Resp	Lower	Upper
276	100		
138	22.6	16.2	24.2
277	25.0	19.5	29.3



#88
 Benzo(b)fluoranthene
 Concen: 5.000 ng
 RT: 15.015 min Scan# 2198
 Delta R.T. -0.012 min
 Lab File: BF131221.D
 Acq: 14 Nov 2022 12:33

Tgt Ion	Resp	Lower	Upper
252	100		
253	20.8	16.9	25.3
125	8.4	6.1	9.1





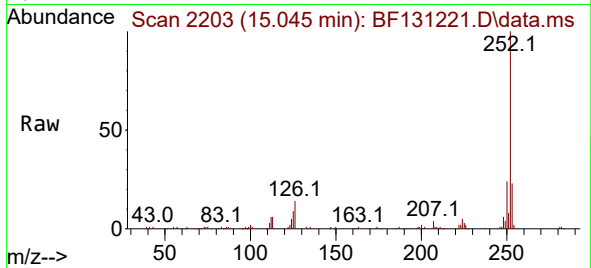
#89
 Benzo(k)fluoranthene
 Concen: 5.034 ng
 RT: 15.045 min Scan# 21
 Delta R.T. -0.006 min
 Lab File: BF131221.D
 Acq: 14 Nov 2022 12:33

Instrument :

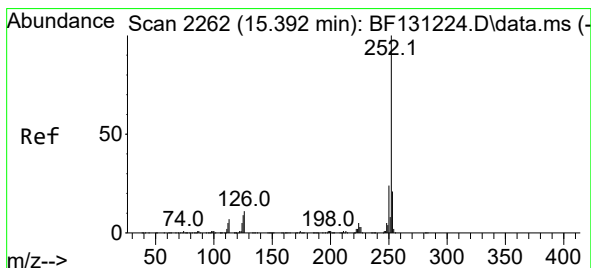
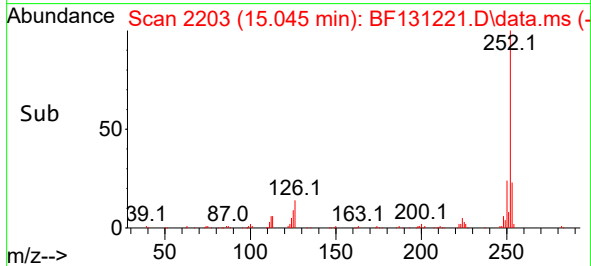
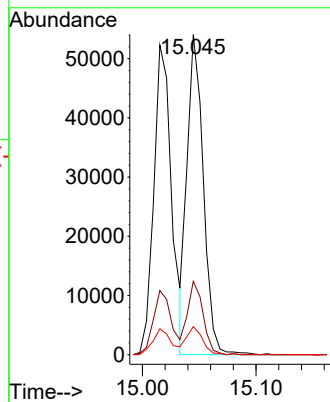
BNA_F

ClientSampleId :

SSTDICC005

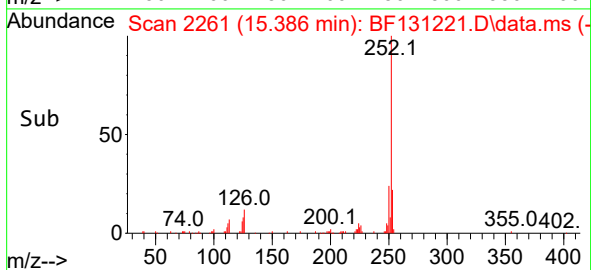
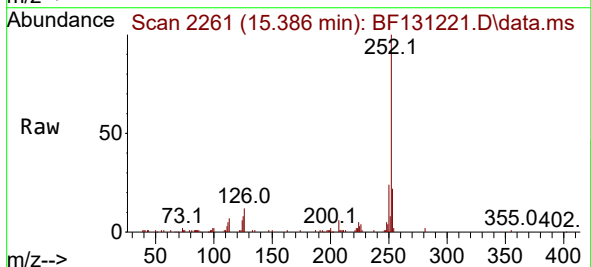
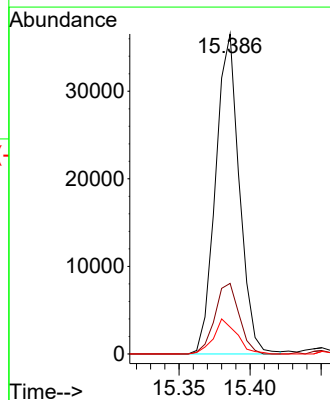


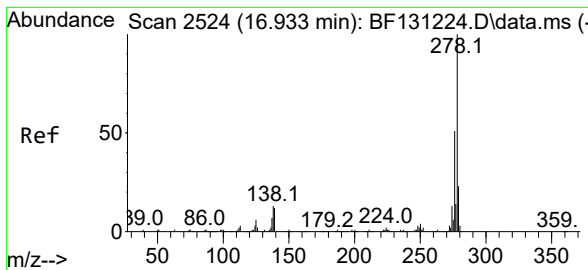
Tgt Ion:252 Resp: 53560
 Ion Ratio Lower Upper
 252 100
 253 23.0 18.1 27.1
 125 8.7 6.7 10.1



#90
 Benzo(a)pyrene
 Concen: 4.793 ng
 RT: 15.386 min Scan# 2261
 Delta R.T. -0.006 min
 Lab File: BF131221.D
 Acq: 14 Nov 2022 12:33

Tgt Ion:252 Resp: 42442
 Ion Ratio Lower Upper
 252 100
 253 22.1 16.6 25.0
 125 8.4 6.9 10.3



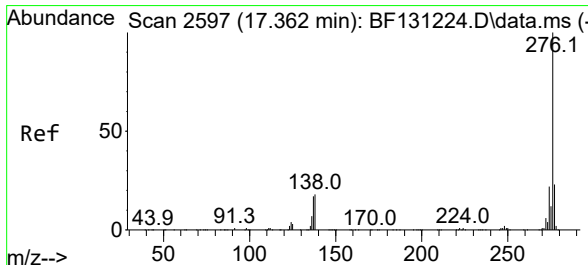
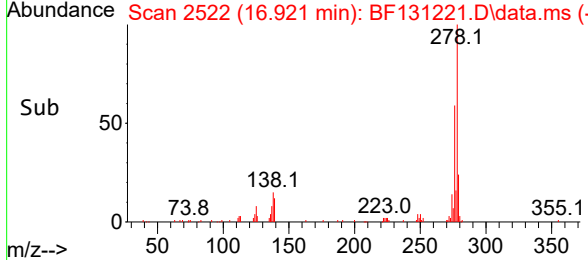
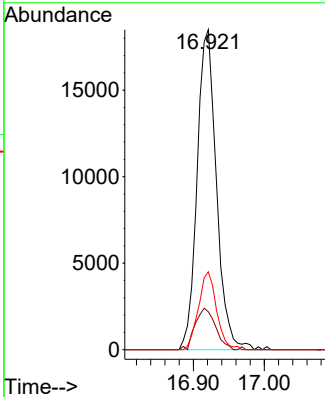
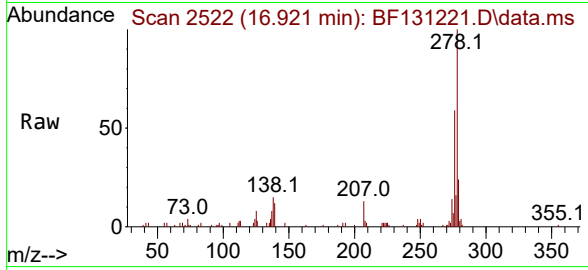


#91
 Dibenzo(a,h)anthracene
 Concen: 4.042 ng
 RT: 16.921 min Scan# 21
 Delta R.T. -0.012 min
 Lab File: BF131221.D
 Acq: 14 Nov 2022 12:33

Instrument : BNA_F
 ClientSampleId : SSTDICC005

Tgt Ion: 278 Resp: 35068

Ion	Ratio	Lower	Upper
278	100		
139	11.8	9.4	14.0
279	24.4	18.4	27.6



#92
 Benzo(g,h,i)perylene
 Concen: 3.530 ng
 RT: 17.345 min Scan# 2594
 Delta R.T. -0.017 min
 Lab File: BF131221.D
 Acq: 14 Nov 2022 12:33

Tgt Ion: 276 Resp: 31713

Ion	Ratio	Lower	Upper
276	100		
277	23.1	18.0	27.0
138	19.4	14.3	21.5

