

Data Path : Z:\svoasrv\HPCHEM1\BNA_F\Data\BF111422\
 Data File : BF131229.D
 Acq On : 14 Nov 2022 16:42
 Operator : CG\JU
 Sample : PB148287BL
 Misc :
 ALS Vial : 11 Sample Multiplier: 1

Instrument :
 BNA_F
 ClientSampleId :
 PB148287BL

Quant Time: Nov 15 04:43:25 2022
 Quant Method : Z:\svoasrv\HPCHEM1\BNA_F\Methods\8270-BF111422.M
 Quant Title : ASP BNA STANDARDS FOR 5 POINT CALIBRATION
 QLast Update : Tue Nov 15 03:52:41 2022
 Response via : Initial Calibration

Compound	R.T.	QIon	Response	Conc	Units	Dev(Min)
Internal Standards						
1) 1,4-Dichlorobenzene-d4	6.804	152	91026	20.000	ng	0.00
21) Naphthalene-d8	8.092	136	351159	20.000	ng	0.00
39) Acenaphthene-d10	9.845	164	164414	20.000	ng	0.00
64) Phenanthrene-d10	11.339	188	321406	20.000	ng	0.00
76) Chrysene-d12	13.980	240	264742	20.000	ng	-0.01
86) Perylene-d12	15.445	264	202475	20.000	ng	0.00
System Monitoring Compounds						
5) 2-Fluorophenol	5.434	112	668674	112.384	ng	0.02
7) Phenol-d6	6.445	99	852625	115.125	ng	0.00
23) Nitrobenzene-d5	7.375	82	598508	73.125	ng	0.00
42) 2,4,6-Tribromophenol	10.645	330	212188	130.301	ng	0.00
45) 2-Fluorobiphenyl	9.169	172	955427	80.701	ng	0.00
79) Terphenyl-d14	12.933	244	1135068	73.559	ng	0.00

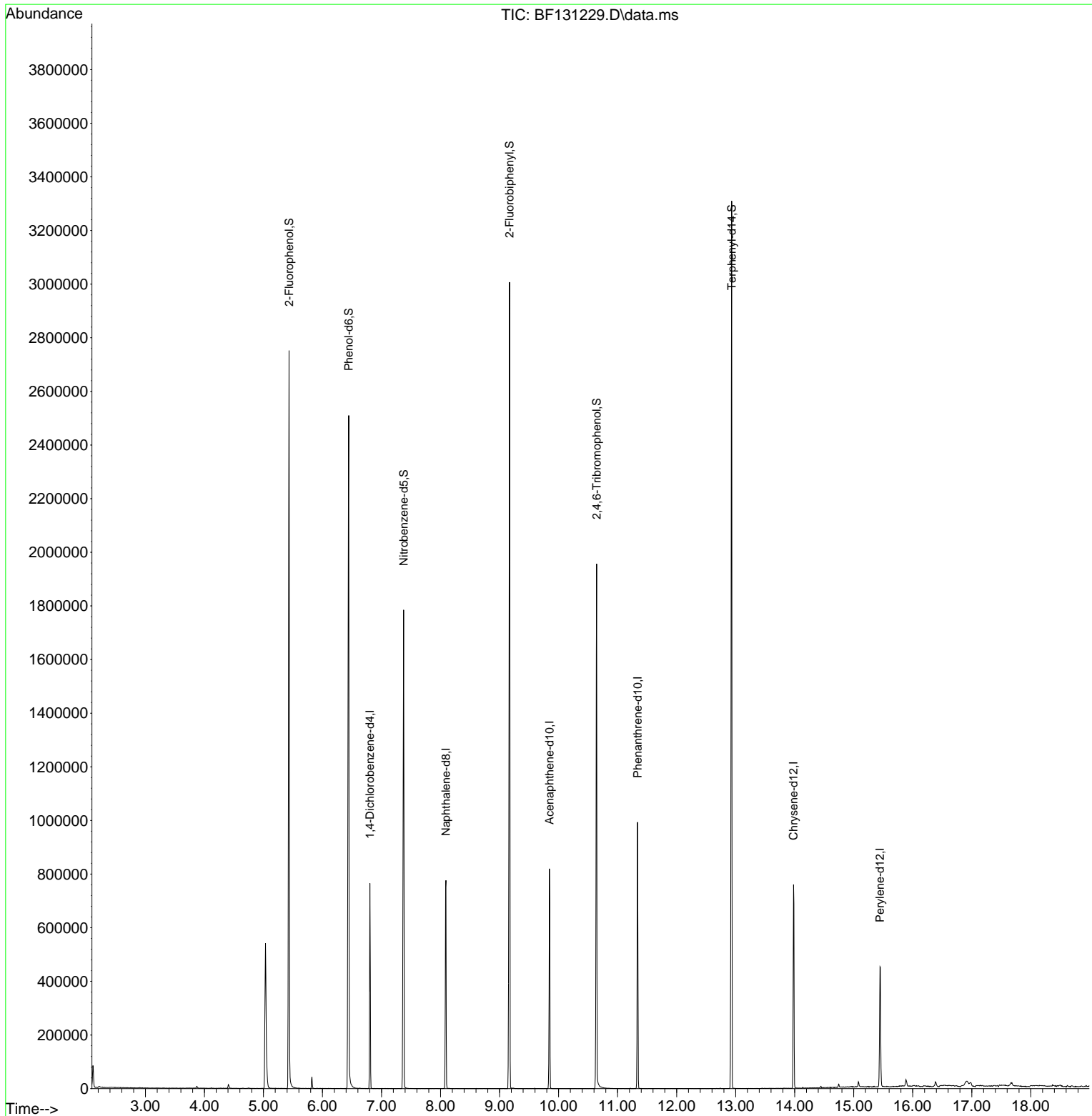
Target Compounds Qvalue

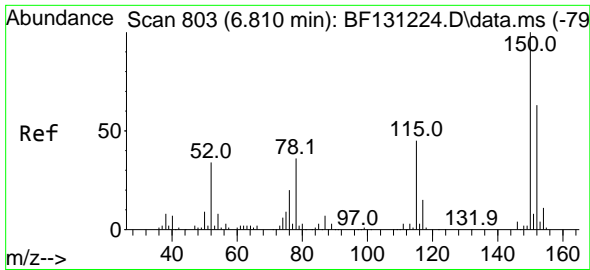
(#) = qualifier out of range (m) = manual integration (+) = signals summed

Data Path : Z:\svoasrv\HPCHEM1\BNA_F\Data\BF111422\
 Data File : BF131229.D
 Acq On : 14 Nov 2022 16:42
 Operator : CG\JU
 Sample : PB148287BL
 Misc :
 ALS Vial : 11 Sample Multiplier: 1

Instrument :
 BNA_F
 ClientSampleId :
 PB148287BL

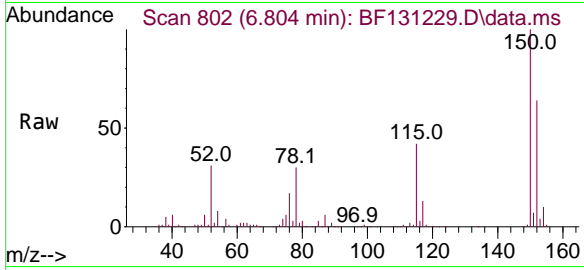
Quant Time: Nov 15 04:43:25 2022
 Quant Method : Z:\svoasrv\HPCHEM1\BNA_F\Methods\8270-BF111422.M
 Quant Title : ASP BNA STANDARDS FOR 5 POINT CALIBRATION
 QLast Update : Tue Nov 15 03:52:41 2022
 Response via : Initial Calibration



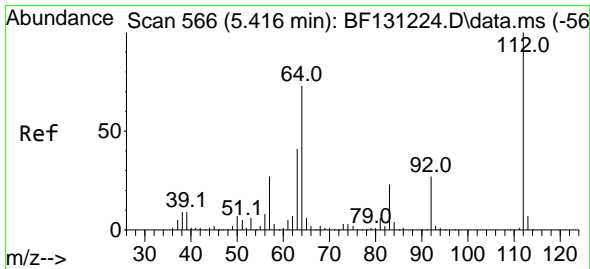
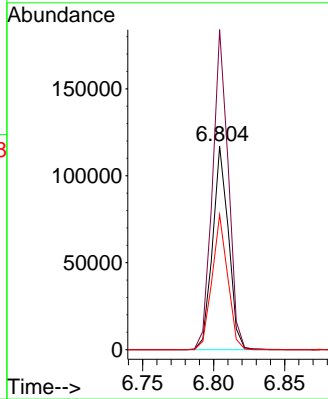
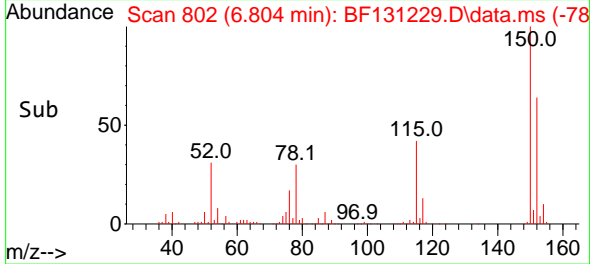


#1
 1,4-Dichlorobenzene-d4
 Concen: 20.000 ng
 RT: 6.804 min Scan# 80
 Delta R.T. -0.006 min
 Lab File: BF131229.D
 Acq: 14 Nov 2022 16:42

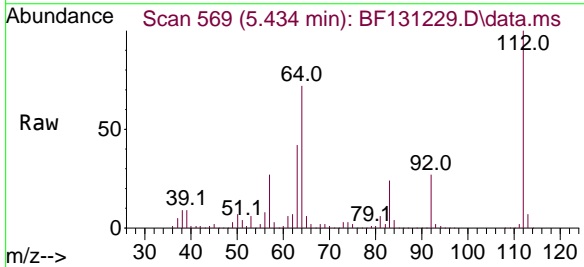
Instrument :
 BNA_F
 ClientSampleId :
 PB148287BL



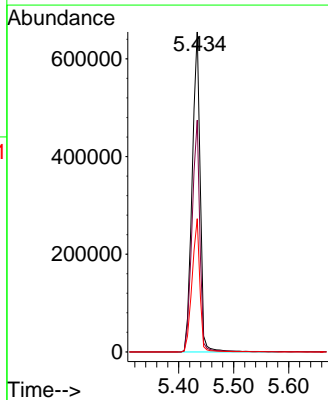
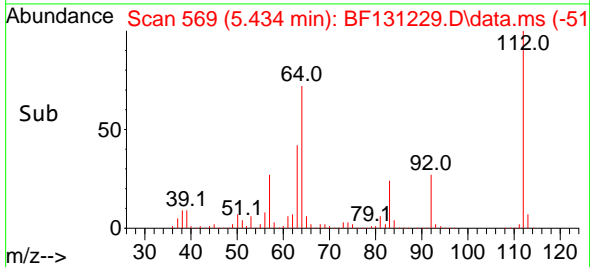
Tgt Ion:152 Resp: 91026
 Ion Ratio Lower Upper
 152 100
 150 157.3 126.2 189.2
 115 66.2 56.8 85.2

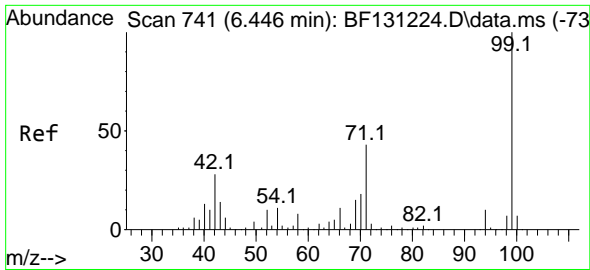


#5
 2-Fluorophenol
 Concen: 112.384 ng
 RT: 5.434 min Scan# 569
 Delta R.T. 0.017 min
 Lab File: BF131229.D
 Acq: 14 Nov 2022 16:42



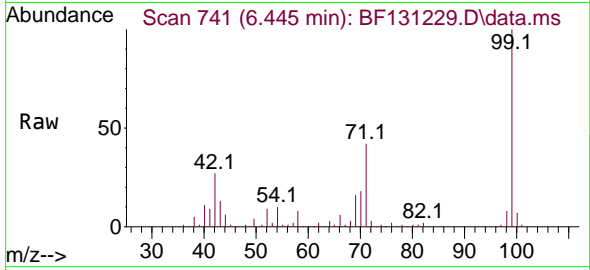
Tgt Ion:112 Resp: 668674
 Ion Ratio Lower Upper
 112 100
 64 72.4 58.6 87.8
 63 41.6 32.6 49.0





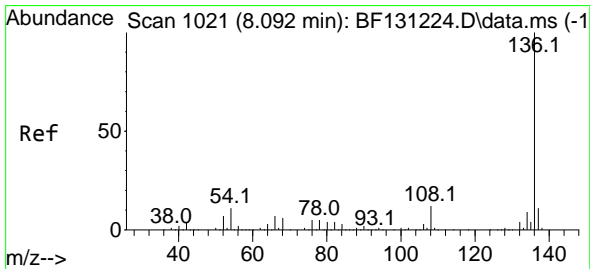
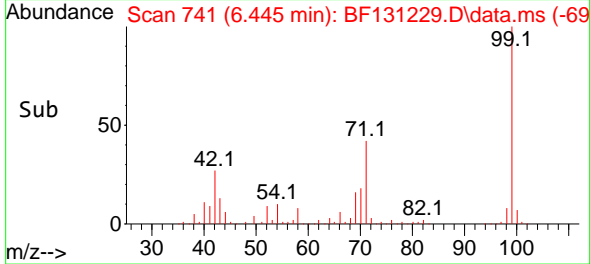
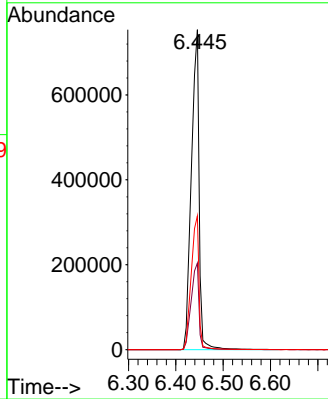
#7
 Phenol-d6
 Concen: 115.125 ng
 RT: 6.445 min Scan# 741
 Delta R.T. -0.000 min
 Lab File: BF131229.D
 Acq: 14 Nov 2022 16:42

Instrument :
 BNA_F
 ClientSampleId :
 PB148287BL



Tgt Ion: 99 Resp: 852625

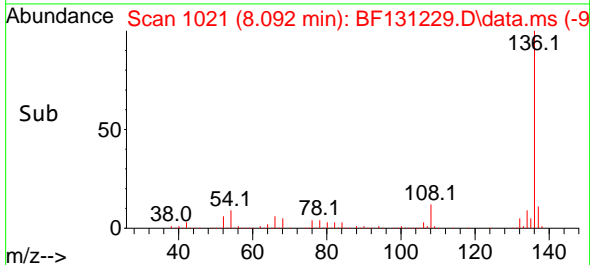
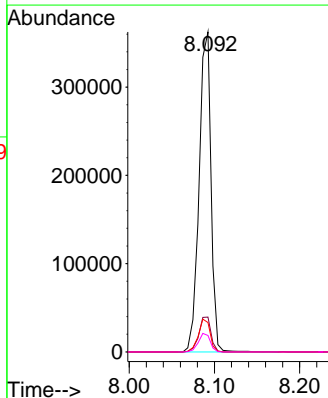
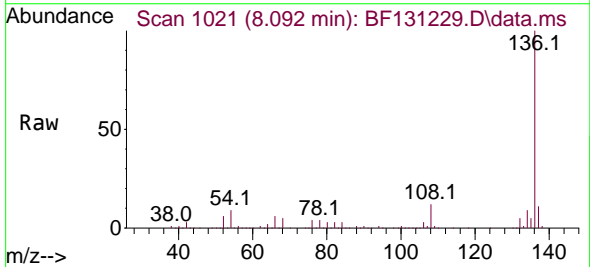
Ion	Ratio	Lower	Upper
99	100		
42	27.0	22.5	33.7
71	41.8	34.5	51.7

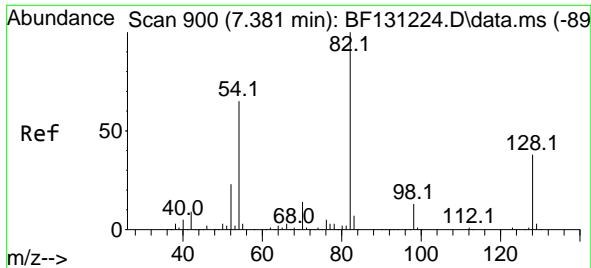


#21
 Naphthalene-d8
 Concen: 20.000 ng
 RT: 8.092 min Scan# 1021
 Delta R.T. 0.000 min
 Lab File: BF131229.D
 Acq: 14 Nov 2022 16:42

Tgt Ion: 136 Resp: 351159

Ion	Ratio	Lower	Upper
136	100		
137	10.9	9.0	13.4
54	9.2	9.0	13.4
68	5.1	5.0	7.4

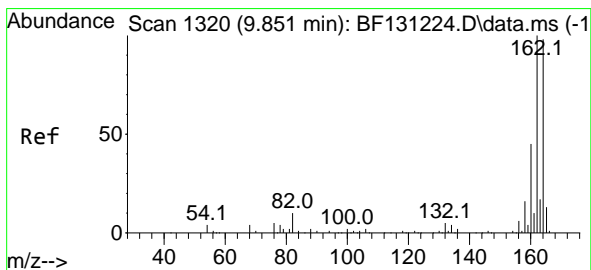
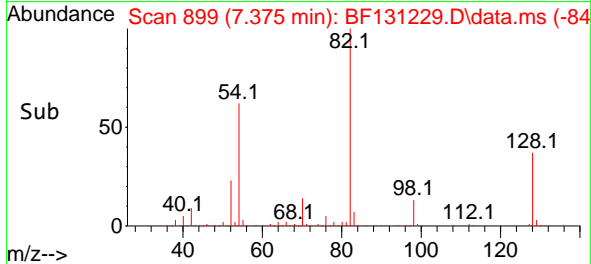
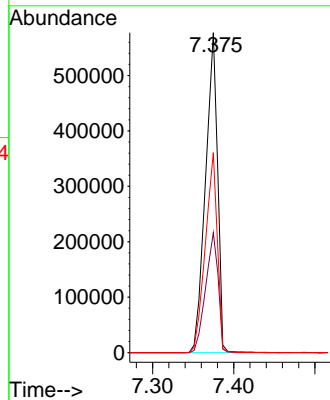
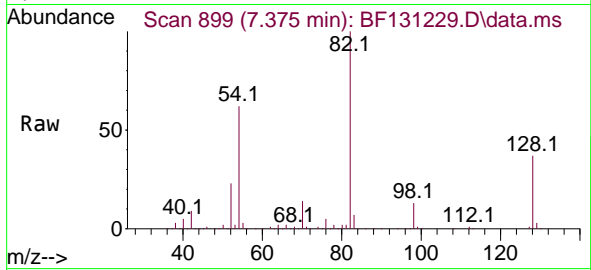




#23
 Nitrobenzene-d5
 Concen: 73.125 ng
 RT: 7.375 min Scan# 89
 Delta R.T. -0.006 min
 Lab File: BF131229.D
 Acq: 14 Nov 2022 16:42

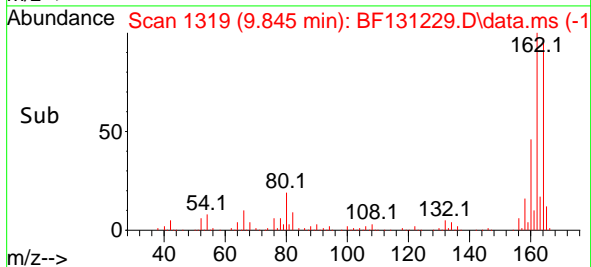
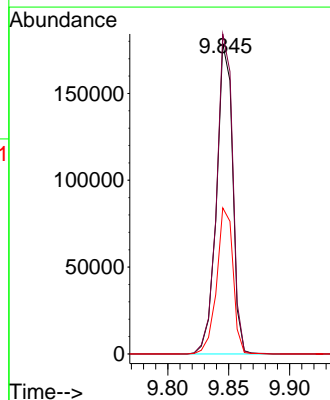
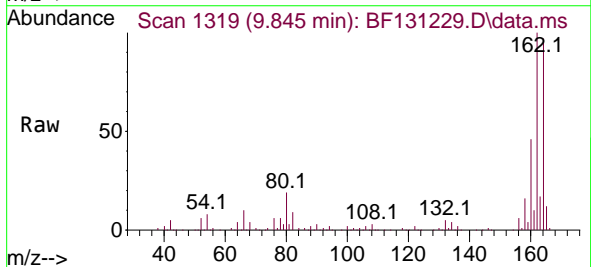
Instrument :
 BNA_F
 ClientSampleId :
 PB148287BL

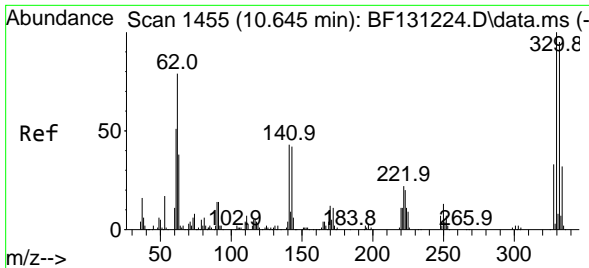
Tgt Ion: 82 Resp: 598508
 Ion Ratio Lower Upper
 82 100
 128 37.5 30.3 45.5
 54 62.5 52.3 78.5



#39
 Acenaphthene-d10
 Concen: 20.000 ng
 RT: 9.845 min Scan# 1319
 Delta R.T. -0.006 min
 Lab File: BF131229.D
 Acq: 14 Nov 2022 16:42

Tgt Ion:164 Resp: 164414
 Ion Ratio Lower Upper
 164 100
 162 103.1 81.4 122.0
 160 47.0 36.6 54.8

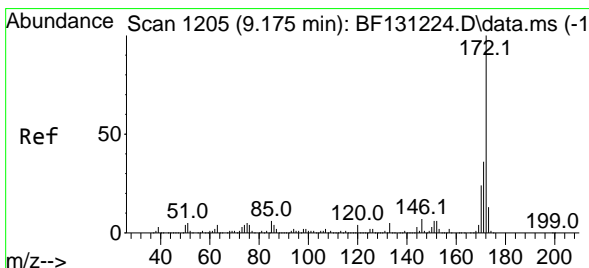
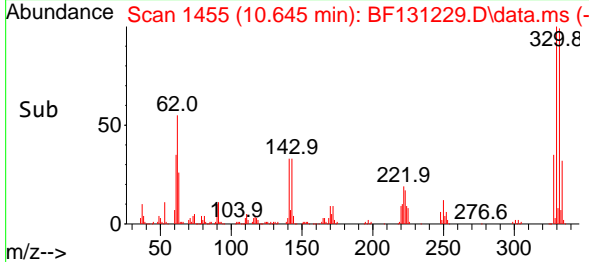
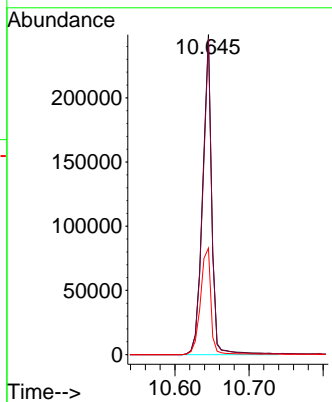
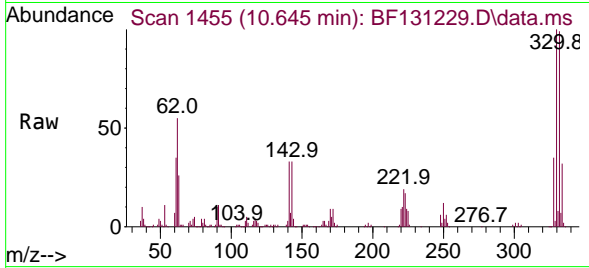




#42
 2,4,6-Tribromophenol
 Concen: 130.301 ng
 RT: 10.645 min Scan# 1455
 Delta R.T. 0.000 min
 Lab File: BF131229.D
 Acq: 14 Nov 2022 16:42

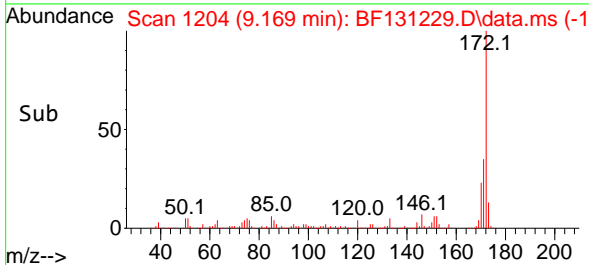
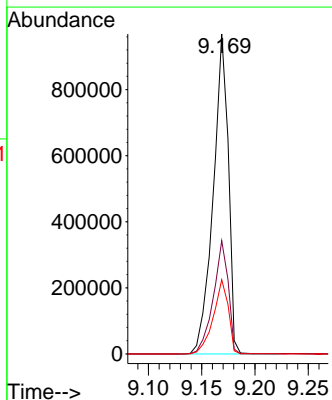
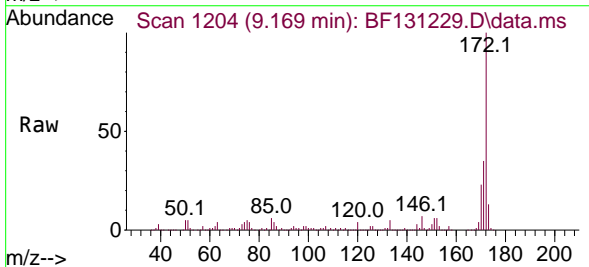
Instrument :
 BNA_F
 ClientSampleId :
 PB148287BL

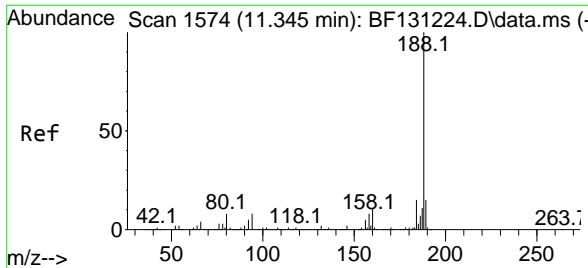
Tgt Ion	Resp	Lower	Upper
330	100		
332	97.8	76.4	114.6
141	38.2	31.2	46.8



#45
 2-Fluorobiphenyl
 Concen: 80.701 ng
 RT: 9.169 min Scan# 1204
 Delta R.T. -0.006 min
 Lab File: BF131229.D
 Acq: 14 Nov 2022 16:42

Tgt Ion	Resp	Lower	Upper
172	100		
171	35.4	28.4	42.6
170	23.2	19.1	28.7



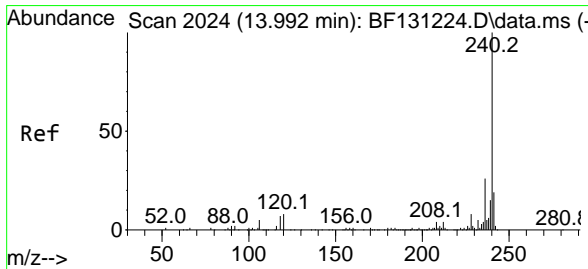
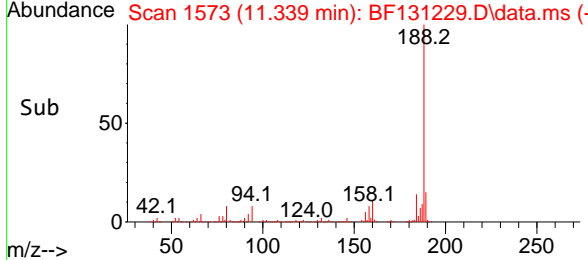
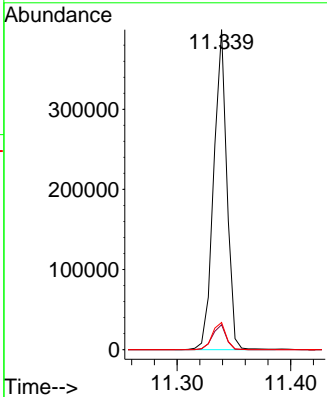
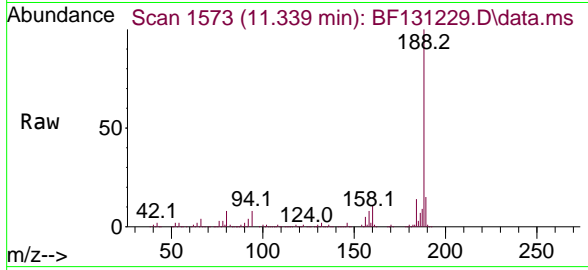


#64
 Phenanthrene-d10
 Concen: 20.000 ng
 RT: 11.339 min Scan# 11
 Delta R.T. -0.006 min
 Lab File: BF131229.D
 Acq: 14 Nov 2022 16:42

Instrument : BNA_F
 Client Sample Id : PB148287BL

Tgt Ion:188 Resp: 321406

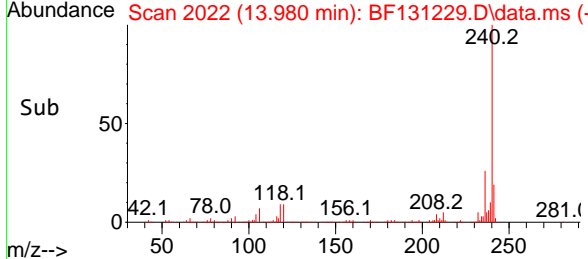
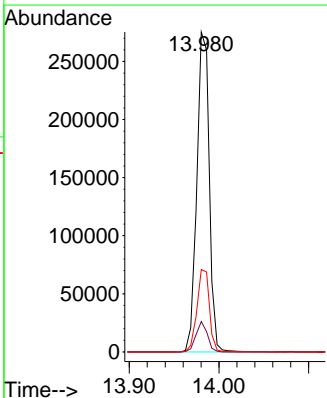
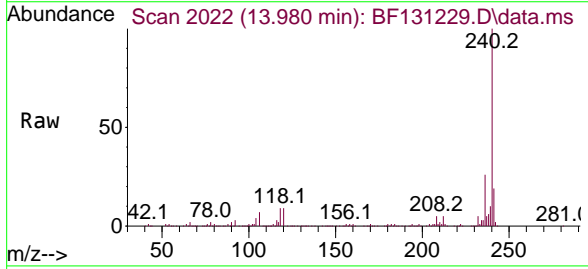
Ion	Ratio	Lower	Upper
188	100		
94	7.8	6.6	10.0
80	8.5	6.7	10.1

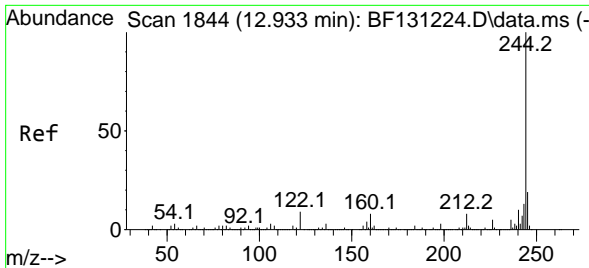


#76
 Chrysene-d12
 Concen: 20.000 ng
 RT: 13.980 min Scan# 2022
 Delta R.T. -0.012 min
 Lab File: BF131229.D
 Acq: 14 Nov 2022 16:42

Tgt Ion:240 Resp: 264742

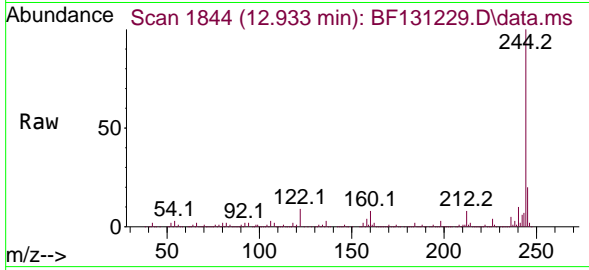
Ion	Ratio	Lower	Upper
240	100		
120	9.5	6.5	9.7
236	25.7	21.1	31.7



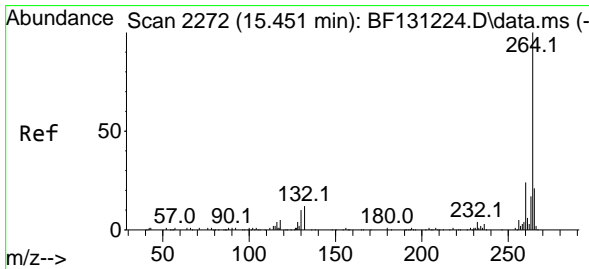
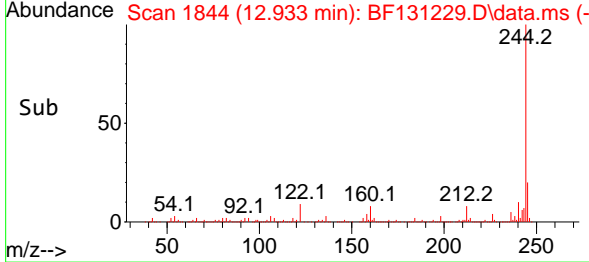
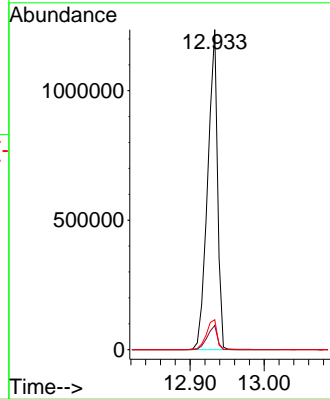


#79
 Terphenyl-d14
 Concen: 73.559 ng
 RT: 12.933 min Scan# 1844
 Delta R.T. -0.000 min
 Lab File: BF131229.D
 Acq: 14 Nov 2022 16:42

Instrument : BNA_F
 Client Sample ID : PB148287BL



Tgt Ion:244 Resp: 1135068
 Ion Ratio Lower Upper
 244 100
 212 7.5 6.2 9.4
 122 9.3 7.0 10.4



#86
 Perylene-d12
 Concen: 20.000 ng
 RT: 15.445 min Scan# 2271
 Delta R.T. -0.006 min
 Lab File: BF131229.D
 Acq: 14 Nov 2022 16:42

Tgt Ion:264 Resp: 202475
 Ion Ratio Lower Upper
 264 100
 260 23.9 19.0 28.4
 265 22.1 17.0 25.4

