

Data Path : Z:\HPCHEM1\BNA_F\DATA\BF111715\
 Data File : BF082985.D
 Acq On : 18 Nov 2015 00:28
 Operator : UM/IZ
 Sample : G4407-04
 Misc :
 ALS Vial : 16 Sample Multiplier: 1

Instrument :
 BNA_F
 ClientSampleId :
 MW-13

Quant Time: Nov 18 06:35:56 2015
 Quant Method : Z:\HPCHEM1\BNA_F\METHODS\8270-BF110715.M
 Quant Title : ASP BNA STANDARDS FOR 5 POINT CALIBRATION
 QLast Update : Tue Nov 17 04:41:30 2015
 Response via : Initial Calibration

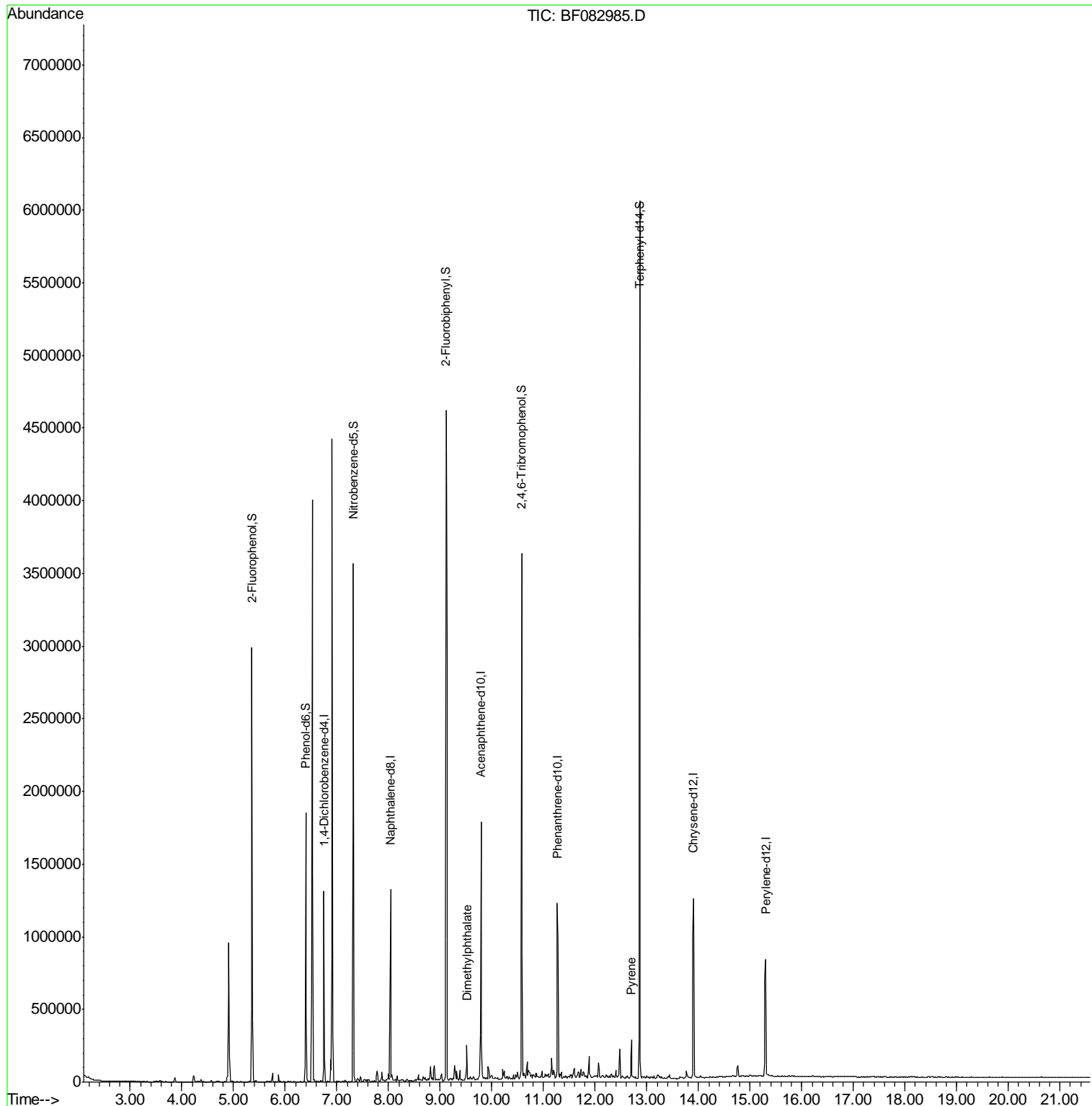
Internal Standards	R.T.	QIon	Response	Conc	Units	Dev(Min)
1) 1,4-Dichlorobenzene-d4	6.75	152	173789	20.00	ng	-0.10
21) Naphthalene-d8	8.04	136	660968	20.00	ng	-0.10
38) Acenaphthene-d10	9.79	164	330101	20.00	ng	-0.10
63) Phenanthrene-d10	11.26	188	616146	20.00	ng	-0.11
75) Chrysene-d12	13.91	240	589614	20.00	ng	-0.11
86) Perylene-d12	15.30	264	438148	20.00	ng	-0.16
System Monitoring Compounds						
5) 2-Fluorophenol	5.36	112	746485	66.83	ng	-0.09
7) Phenol-d6	6.40	99	610626	41.12	ng	-0.09
23) Nitrobenzene-d5	7.32	82	1386981	91.31	ng	-0.09
41) 2,4,6-Tribromophenol	10.58	330	433773	114.61	ng	-0.10
44) 2-Fluorobiphenyl	9.12	172	1981391	86.03	ng	-0.10
78) Terphenyl-d14	12.87	244	2070018	83.27	ng	-0.10
Target Compounds						Qvalue
49) Dimethylphthalate	9.52	163	101895	3.77	ng	98
77) Pyrene	12.71	202	116905	2.89	ng	95

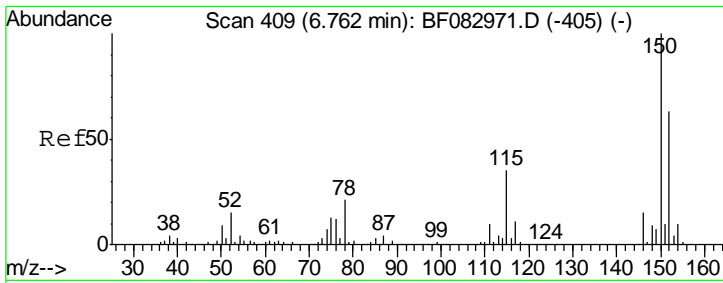
(#) = qualifier out of range (m) = manual integration (+) = signals summed

Data Path : Z:\HPCHEM1\BNA_F\DATA\BF111715\
 Data File : BF082985.D
 Acq On : 18 Nov 2015 00:28
 Operator : UM/IZ
 Sample : G4407-04
 Misc :
 ALS Vial : 16 Sample Multiplier: 1

Instrument :
 BNA_F
 ClientSampled :
 MW-13

Quant Time: Nov 18 06:35:56 2015
 Quant Method : Z:\HPCHEM1\BNA_F\METHODS\8270-BF110715.M
 Quant Title : ASP BNA STANDARDS FOR 5 POINT CALIBRATION
 QLast Update : Tue Nov 17 04:41:30 2015
 Response via : Initial Calibration

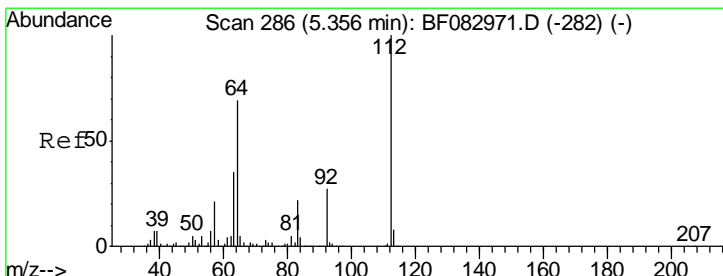
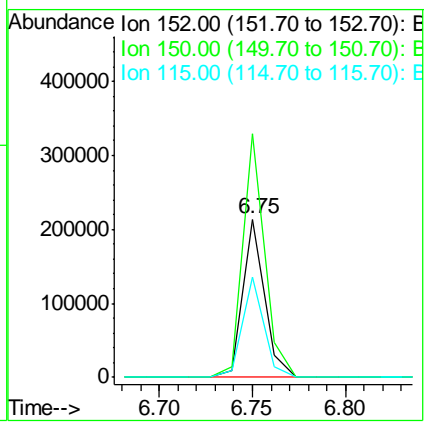
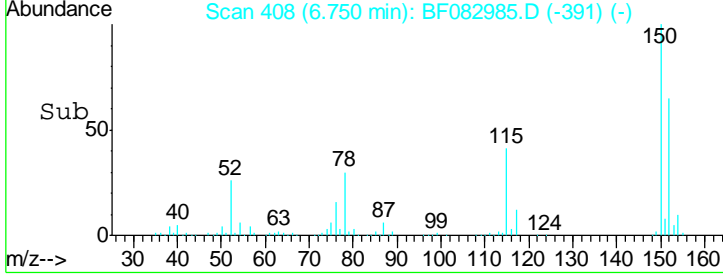
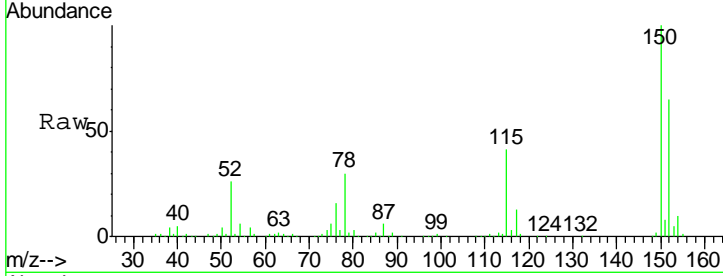




#1
 1,4-Dichlorobenzene-d4
 Concen: 20.00 ng
 RT: 6.75 min Scan# 408
 Delta R.T. -0.10 min
 Lab File: BF082985.D
 Acq: 18 Nov 2015 00:28

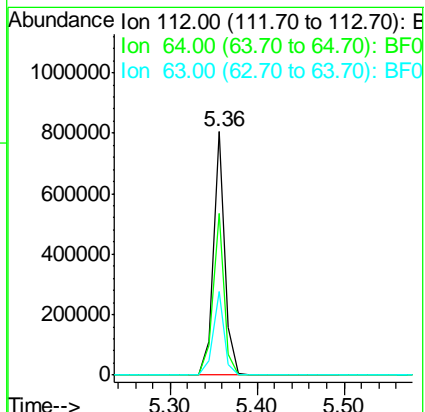
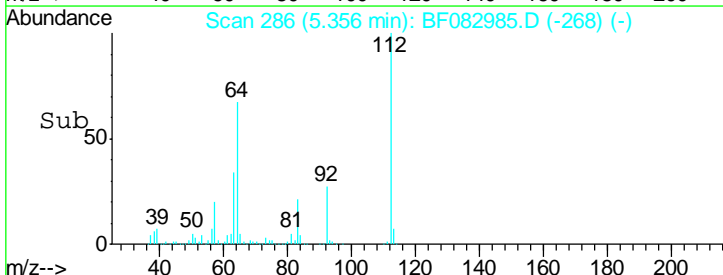
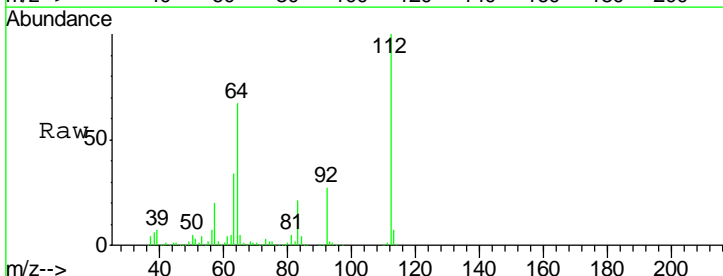
Instrument :
 BNA_F
ClientSampled :
 MW-13

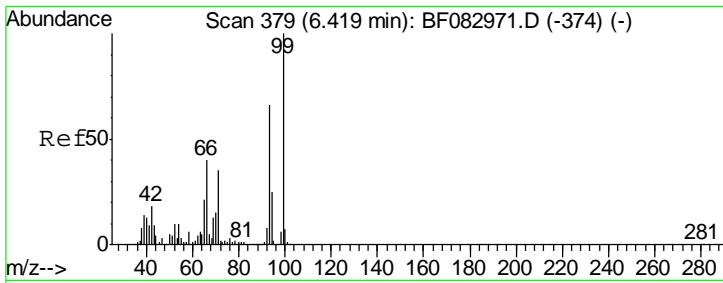
Tgt Ion	Resp	Lower	Upper
152	173789		
150	153.8	127.0	190.4
115	63.5	47.0	70.6



#5
 2-Fluorophenol
 Concen: 66.83 ng
 RT: 5.36 min Scan# 286
 Delta R.T. -0.09 min
 Lab File: BF082985.D
 Acq: 18 Nov 2015 00:28

Tgt Ion	Resp	Lower	Upper
112	746485		
64	66.6	48.9	73.3
63	34.5	28.1	42.1

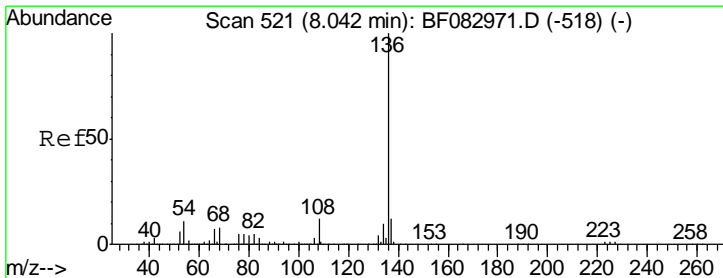
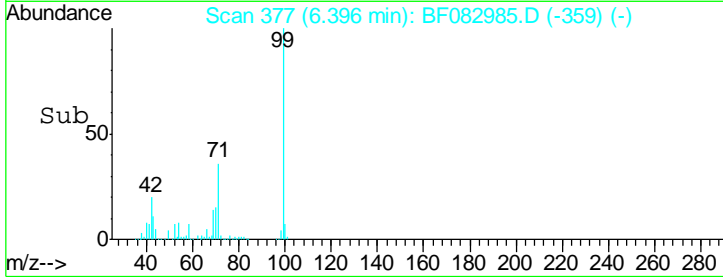
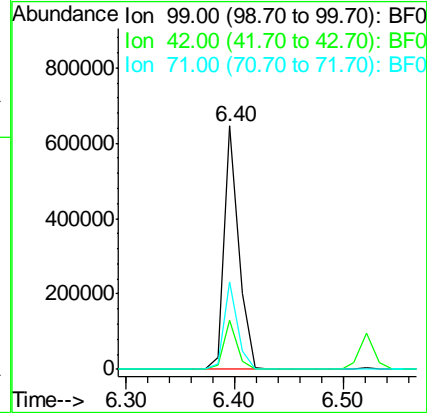
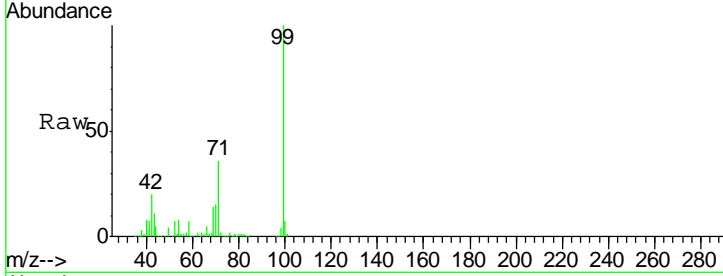




#7
 Phenol-d6
 Concen: 41.12 ng
 RT: 6.40 min Scan# 377
 Delta R.T. -0.09 min
 Lab File: BF082985.D
 Acq: 18 Nov 2015 00:28

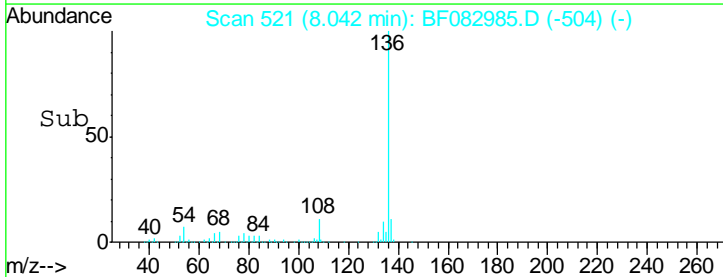
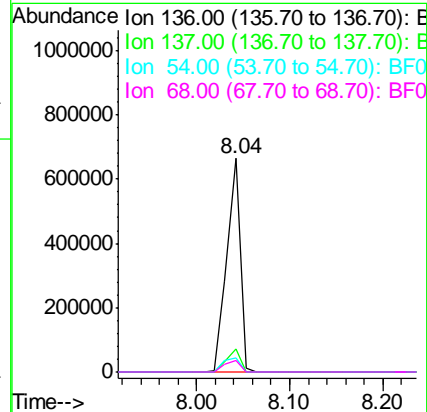
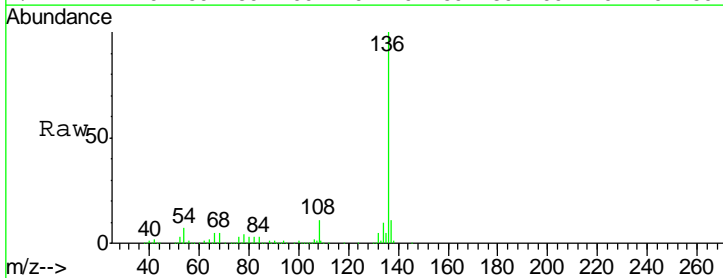
Instrument :
 BNA_F
 ClientSampled :
 MW-13

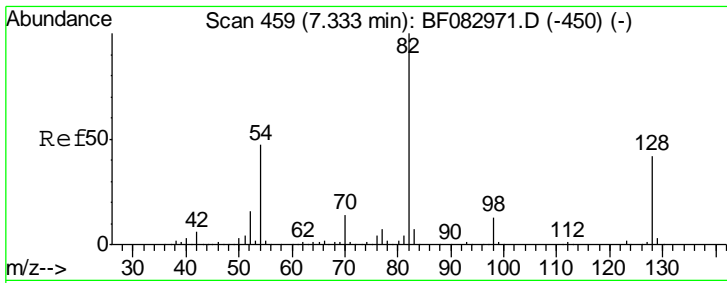
Tgt Ion	Resp	Lower	Upper
99	610626		
42	20.1	19.2	28.8
71	35.9	35.0	52.4



#21
 Naphthalene-d8
 Concen: 20.00 ng
 RT: 8.04 min Scan# 521
 Delta R.T. -0.10 min
 Lab File: BF082985.D
 Acq: 18 Nov 2015 00:28

Tgt Ion	Resp	Lower	Upper
136	660968		
137	10.6	9.1	13.7
54	6.9	9.1	13.7#
68	5.2	4.8	7.2



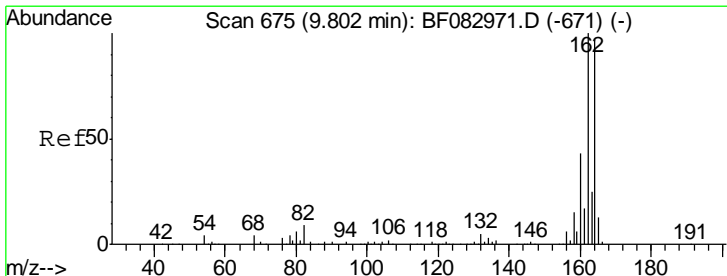
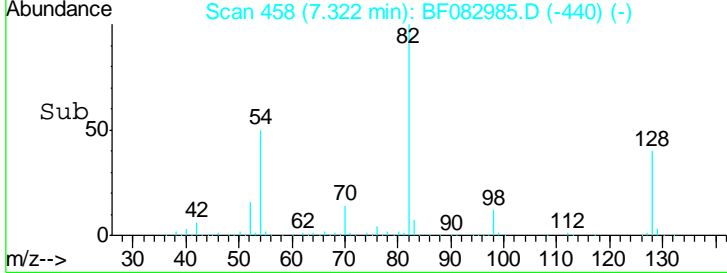
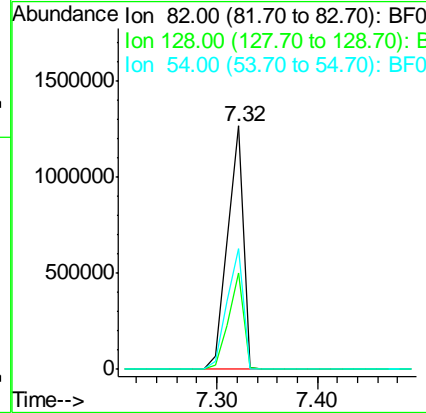
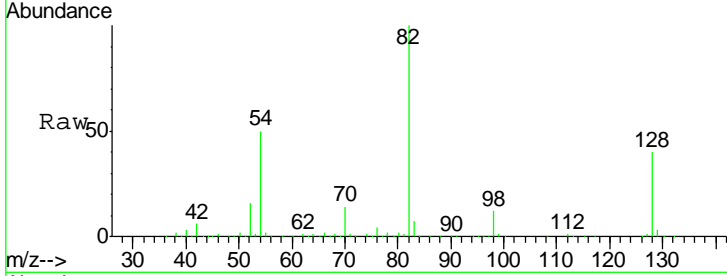


#23
 Nitrobenzene-d5
 Concen: 91.31 ng
 RT: 7.32 min Scan# 458
 Delta R.T. -0.09 min
 Lab File: BF082985.D
 Acq: 18 Nov 2015 00:28

Instrument :
 BNA_F
 ClientSampled :
 MW-13

Tgt Ion: 82 Resp: 1386981

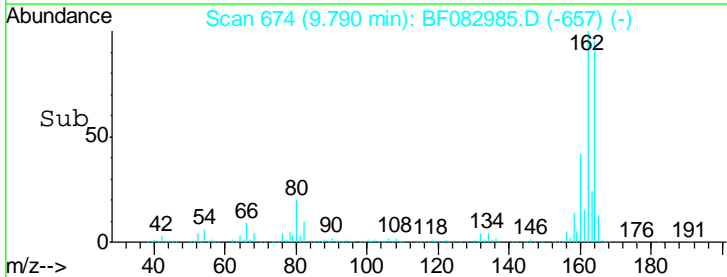
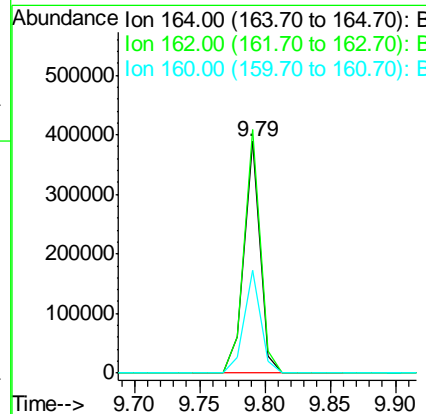
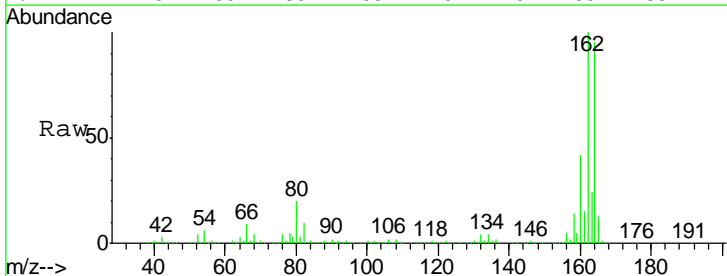
Ion	Ratio	Lower	Upper
82	100		
128	39.8	26.8	40.2
54	49.8	45.7	68.5

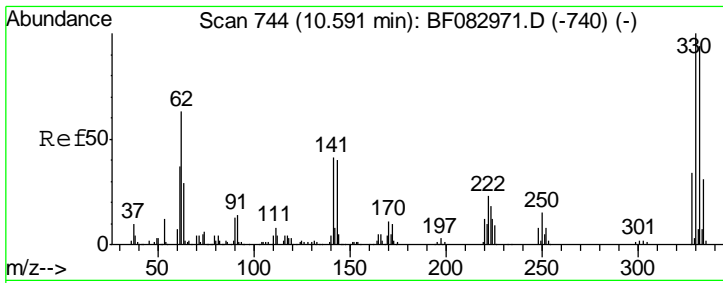


#38
 Acenaphthene-d10
 Concen: 20.00 ng
 RT: 9.79 min Scan# 674
 Delta R.T. -0.10 min
 Lab File: BF082985.D
 Acq: 18 Nov 2015 00:28

Tgt Ion: 164 Resp: 330101

Ion	Ratio	Lower	Upper
164	100		
162	105.2	84.9	127.3
160	44.6	37.5	56.3

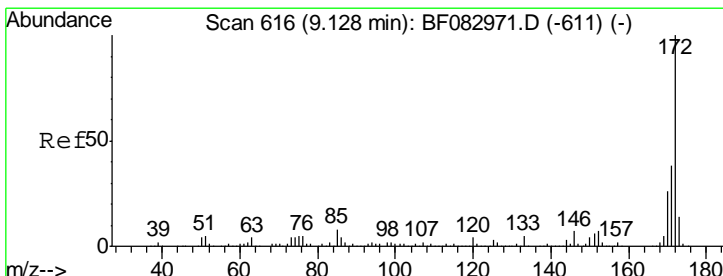
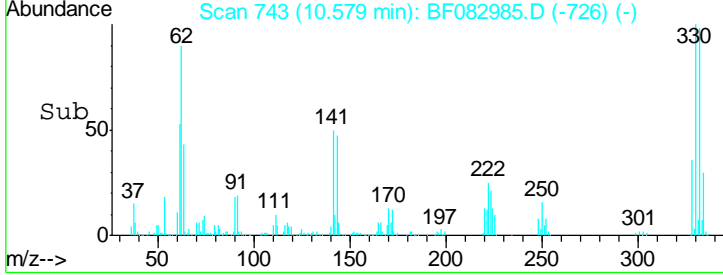
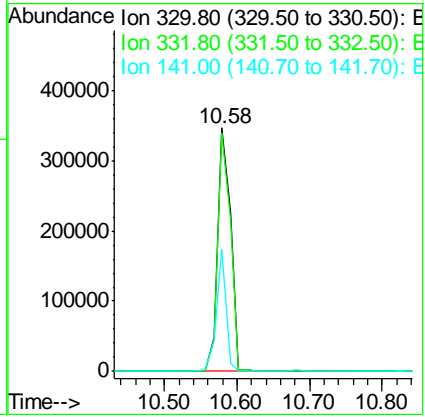
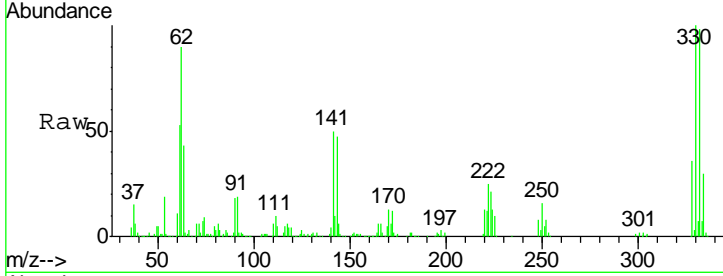




#41
 2,4,6-Tribromophenol
 Concen: 114.61 ng
 RT: 10.58 min Scan# 743
 Delta R.T. -0.10 min
 Lab File: BF082985.D
 Acq: 18 Nov 2015 00:28

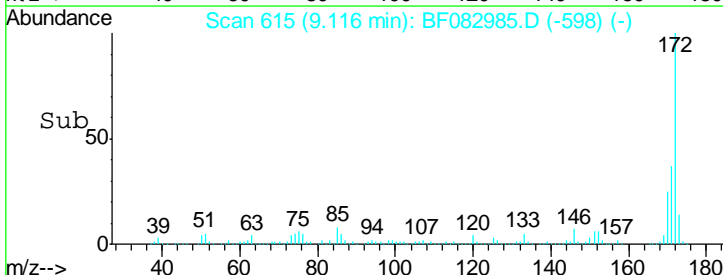
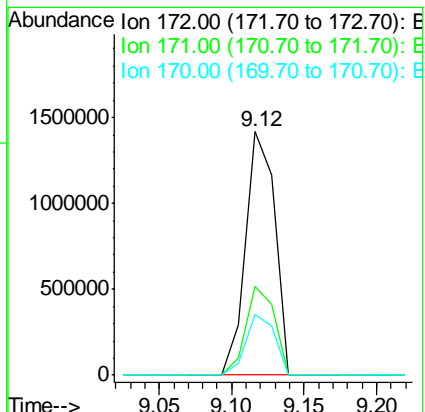
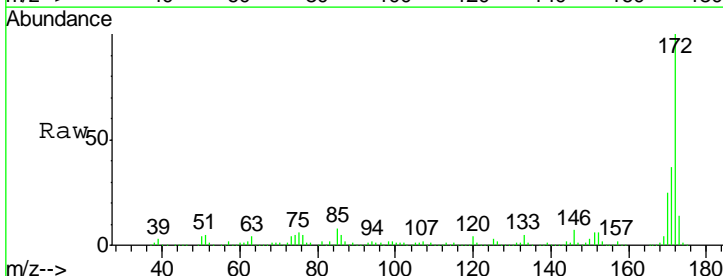
Instrument :
 BNA_F
 ClientSampled :
 MW-13

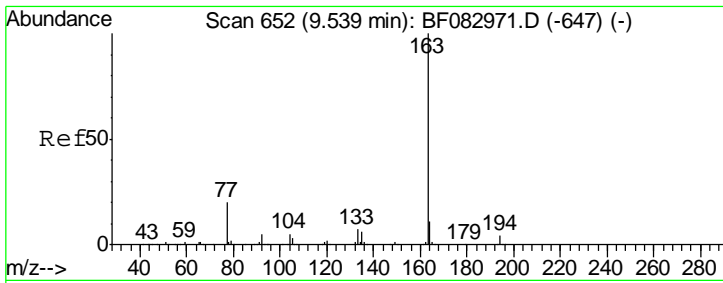
Tgt Ion	Resp	Lower	Upper
330	100		
332	96.4	76.6	114.8
141	37.6	41.2	61.8#



#44
 2-Fluorobiphenyl
 Concen: 86.03 ng
 RT: 9.12 min Scan# 615
 Delta R.T. -0.10 min
 Lab File: BF082985.D
 Acq: 18 Nov 2015 00:28

Tgt Ion	Resp	Lower	Upper
172	100		
171	36.6	30.8	46.2
170	24.8	21.2	31.8

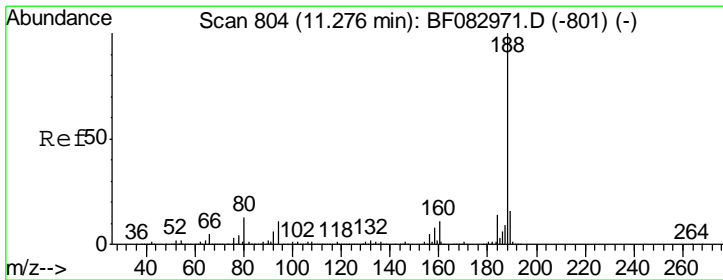
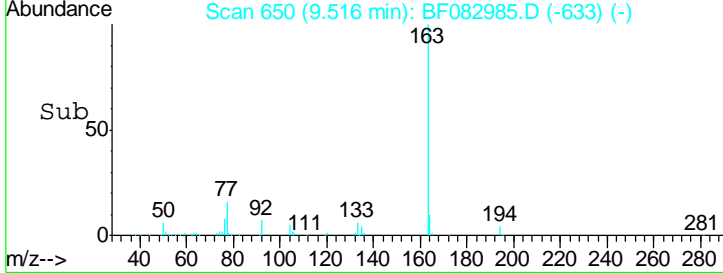
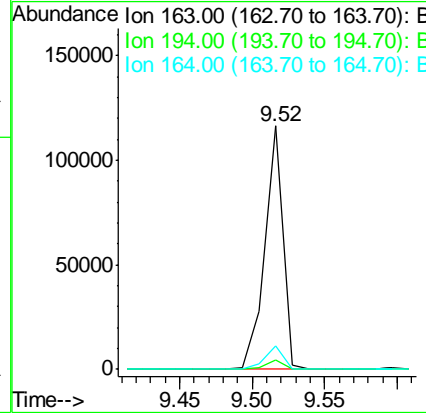
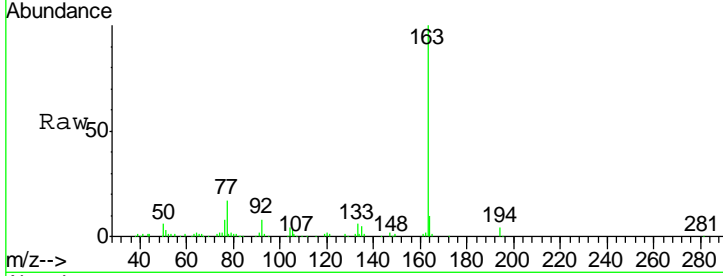




#49
 Dimethylphthalate
 Concen: 3.77 ng
 RT: 9.52 min Scan# 650
 Delta R.T. -0.10 min
 Lab File: BF082985.D
 Acq: 18 Nov 2015 00:28

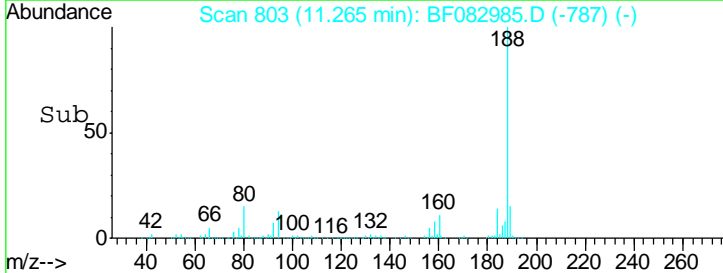
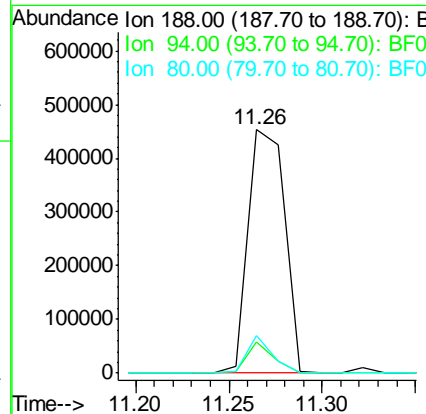
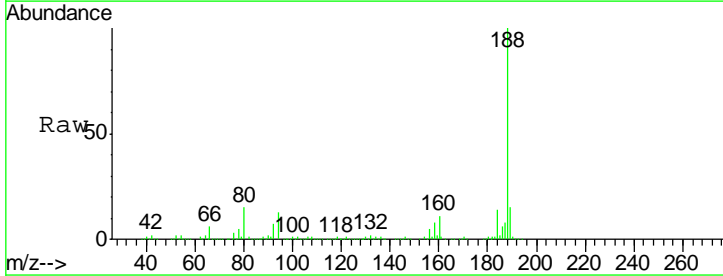
Instrument :
 BNA_F
 ClientSampled :
 MW-13

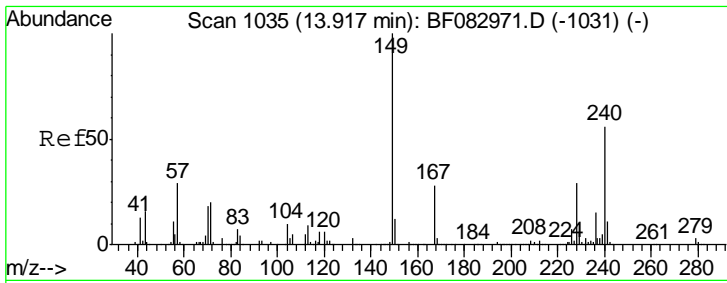
Tgt Ion	Resp	Lower	Upper
163	101895		
194	3.7	2.6	4.0
164	9.9	8.7	13.1



#63
 Phenanthrene-d10
 Concen: 20.00 ng
 RT: 11.26 min Scan# 803
 Delta R.T. -0.11 min
 Lab File: BF082985.D
 Acq: 18 Nov 2015 00:28

Tgt Ion	Resp	Lower	Upper
188	616146		
94	12.9	6.1	9.1#
80	15.5	7.0	10.6#

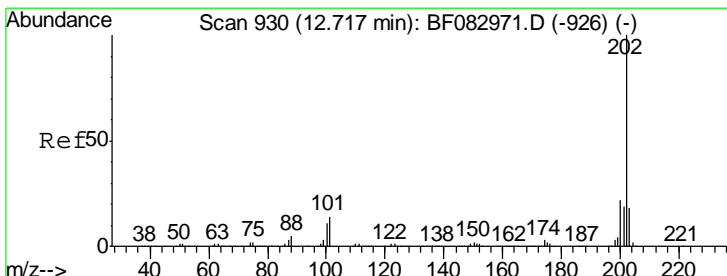
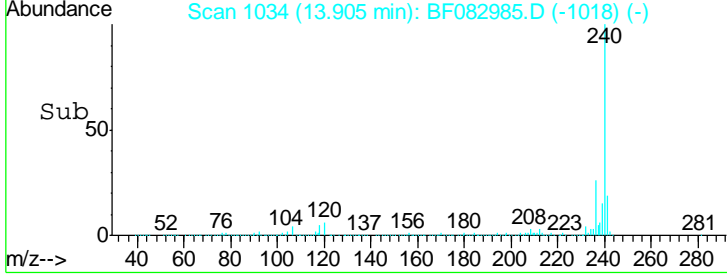
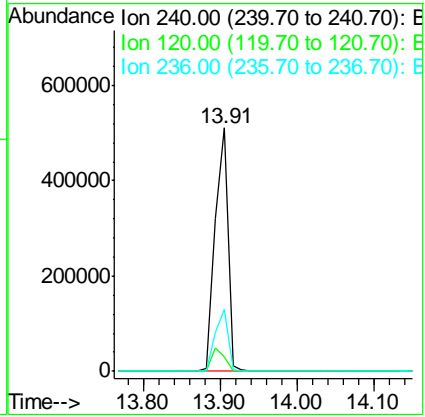
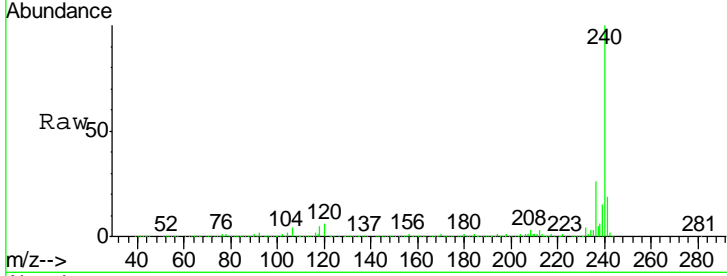




#75
 Chrysene-d12
 Concen: 20.00 ng
 RT: 13.91 min Scan# 1034
 Delta R.T. -0.11 min
 Lab File: BF082985.D
 Acq: 18 Nov 2015 00:28

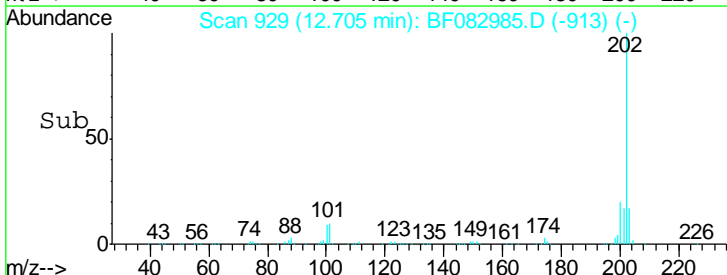
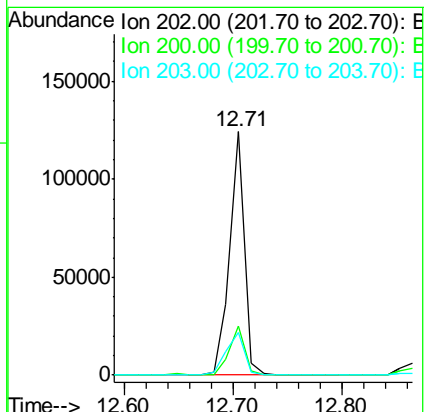
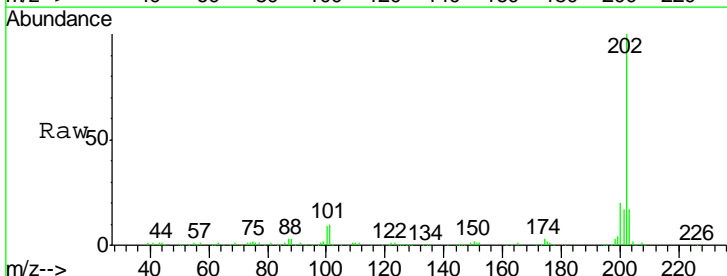
Instrument :
 BNA_F
 ClientSampled :
 MW-13

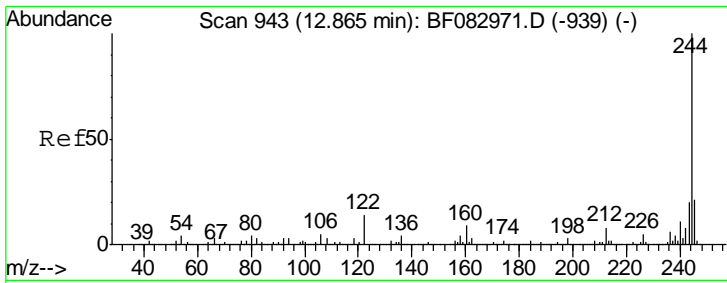
Tgt Ion	Resp	Lower	Upper
240	589614		
120	5.7	10.9	16.3#
236	25.6	21.6	32.4



#77
 Pyrene
 Concen: 2.89 ng
 RT: 12.71 min Scan# 929
 Delta R.T. -0.11 min
 Lab File: BF082985.D
 Acq: 18 Nov 2015 00:28

Tgt Ion	Resp	Lower	Upper
202	116905		
200	20.1	18.7	28.1
203	17.3	14.8	22.2

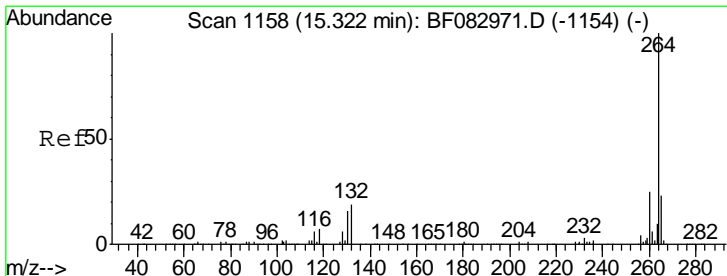
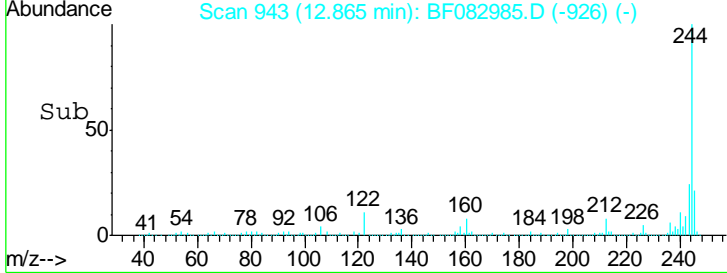
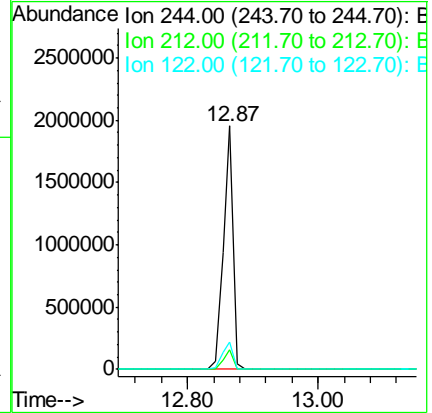
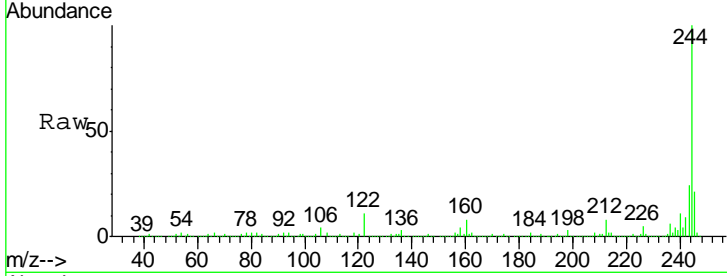




#78
 Terphenyl-d14
 Concen: 83.27 ng
 RT: 12.87 min Scan# 943
 Delta R.T. -0.10 min
 Lab File: BF082985.D
 Acq: 18 Nov 2015 00:28

Instrument :
 BNA_F
 ClientSampled :
 MW-13

Tgt Ion	Resp	Lower	Upper
244	100		
212	8.3	7.6	11.4
122	11.0	11.3	16.9#



#86
 Perylene-d12
 Concen: 20.00 ng
 RT: 15.30 min Scan# 1156
 Delta R.T. -0.16 min
 Lab File: BF082985.D
 Acq: 18 Nov 2015 00:28

Tgt Ion	Resp	Lower	Upper
264	100		
260	23.3	19.8	29.6
265	21.7	17.4	26.0

