

Data Path : Z:\HPCHEM1\BNA F\DATA\BF111717\  
 Data File : BF100688.D  
 Acq On : 17 Nov 2017 21:57  
 Operator : SJ/JU  
 Sample : I6486-04  
 Misc :  
 ALS Vial : 10 Sample Multiplier: 1

Instrument :  
 BNA\_F  
 ClientSampleId :  
 EPE-L-9(5-10)

Integration Parameters: rteint.p  
 Integrator: RTE  
 Smoothing : ON Filtering: 5  
 Sampling : 1 Min Area: 3 % of largest Peak  
 Start Thrs: 0.2 Max Peaks: 100  
 Stop Thrs : 0 Peak Location: TOP

If leading or trailing edge < 100 prefer < Baseline drop else tangent >  
 Peak separation: 5

Method : Z:\HPCHEM1\BNA F\METHODS\8270-BF110817.M  
 Title : ASP BNA STANDARDS FOR 5 POINT CALIBRATION

Signal : TIC

peak #	R.T. min	first scan	max scan	last scan	PK TY	peak height	corr. area	corr. % max.	% of total
1	5.110	510	514	526	rBB	119336	142815	7.12%	0.813%
2	5.498	575	580	583	rBV	1783084	1763678	87.94%	10.034%
3	6.504	746	751	754	rBV	1768303	1822393	90.86%	10.368%
4	6.651	771	776	779	rBV	1972234	1842506	91.87%	10.483%
5	6.881	811	815	818	rBV	717927	556190	27.73%	3.164%
6	7.040	837	842	845	rBV	1503549	1340709	66.85%	7.628%
7	7.440	905	910	914	rBV	1121085	1150792	57.38%	6.547%
8	8.163	1029	1033	1036	rBV	902105	750258	37.41%	4.268%
9	9.234	1210	1215	1219	rBV	2045660	2005621	100.00%	11.411%
10	9.628	1278	1282	1285	rBV	336635	265141	13.22%	1.508%
11	9.916	1327	1331	1335	rBV	966056	833766	41.57%	4.744%
12	10.704	1461	1465	1468	rBV	1404206	1235885	61.62%	7.031%
13	10.810	1480	1483	1491	rBV	60735	60839	3.03%	0.346%
14	11.404	1580	1584	1587	rBV	962252	817231	40.75%	4.649%
15	11.916	1667	1671	1675	rBV2	30286	28322	1.41%	0.161%
16	12.610	1787	1789	1793	rVB	22926	20918	1.04%	0.119%
17	12.986	1848	1853	1856	rBV	1854708	1610340	80.29%	9.162%
18	13.869	1999	2003	2014	rBV	72309	86179	4.30%	0.490%
19	14.010	2022	2027	2028	rBV	30515	25166	1.25%	0.143%
20	14.039	2028	2032	2035	rVB	702358	597596	29.80%	3.400%
21	15.515	2277	2283	2294	rVB	504340	620594	30.94%	3.531%

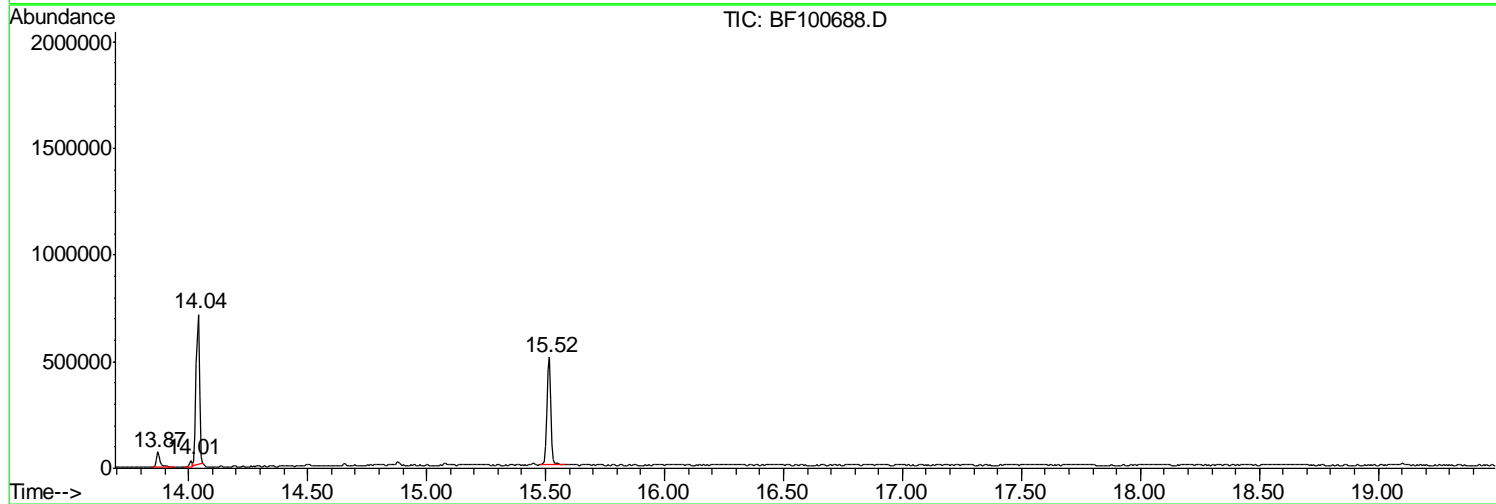
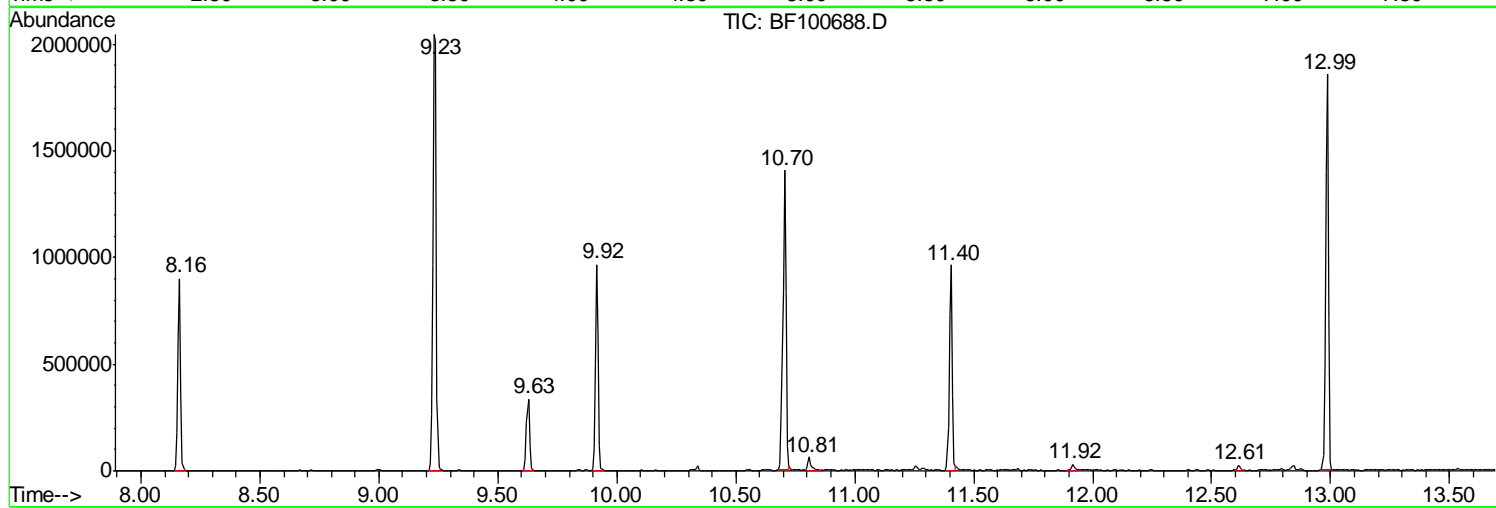
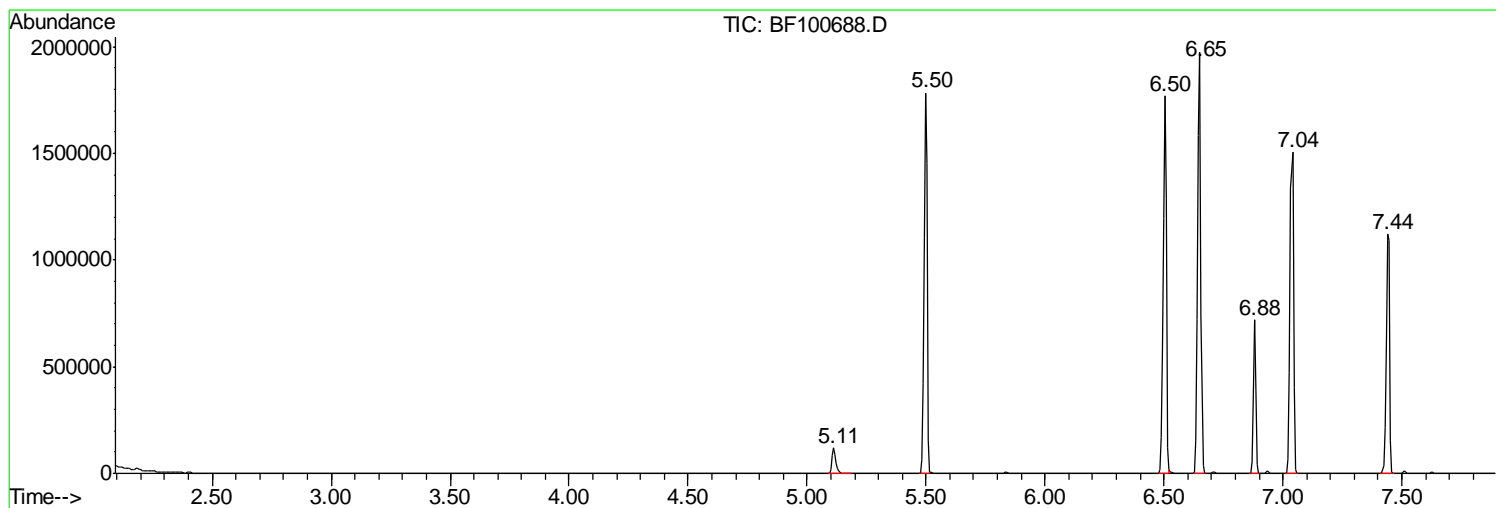
Sum of corrected areas: 17576939

Data Path : Z:\HPCHEM1\BNA F\DATA\BF111717\  
Data File : BF100688.D  
Acq On : 17 Nov 2017 21:57  
Operator : SJ/JU  
Sample : I6486-04  
Misc :  
ALS Vial : 10 Sample Multiplier: 1

Instrument :  
BNA\_F  
ClientSampled :  
EPE-L-9(5-10)

Quant Method : Z:\HPCHEM1\BNA F\METHODS\8270-BF110817.M  
Quant Title : ASP BNA STANDARDS FOR 5 POINT CALIBRATION

TIC Library : C:\DATABASE\NIST11.L  
TIC Integration Parameters: LSCINT.P



Data Path : Z:\HPCHEM1\BNA F\DATA\BF111717\  
 Data File : BF100688.D  
 Acq On : 17 Nov 2017 21:57  
 Operator : SJ/JU  
 Sample : I6486-04  
 Misc :  
 ALS Vial : 10 Sample Multiplier: 1

Instrument :  
 BNA\_F  
 ClientSampleId :  
 EPE-L-9(5-10)

Quant Method : Z:\HPCHEM1\BNA F\METHODS\8270-BF110817.M  
 Quant Title : ASP BNA STANDARDS FOR 5 POINT CALIBRATION

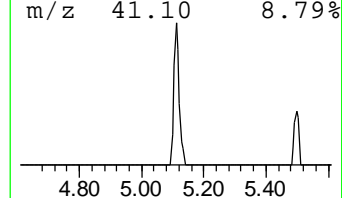
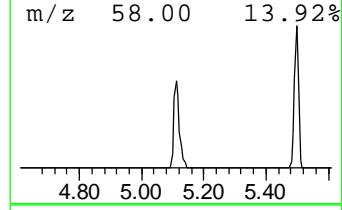
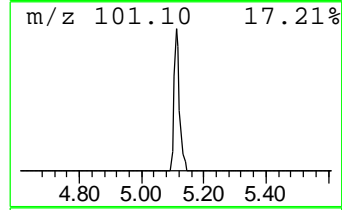
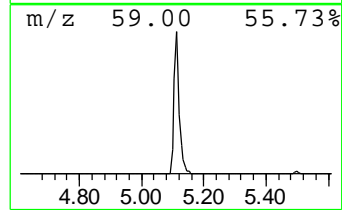
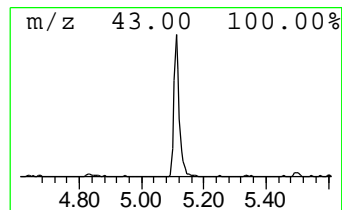
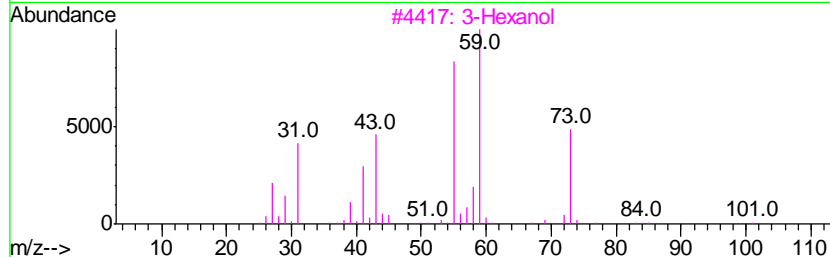
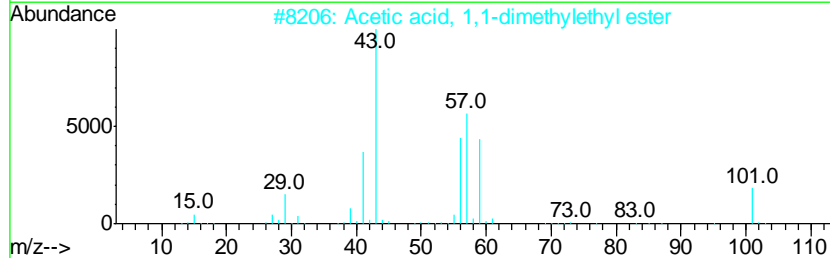
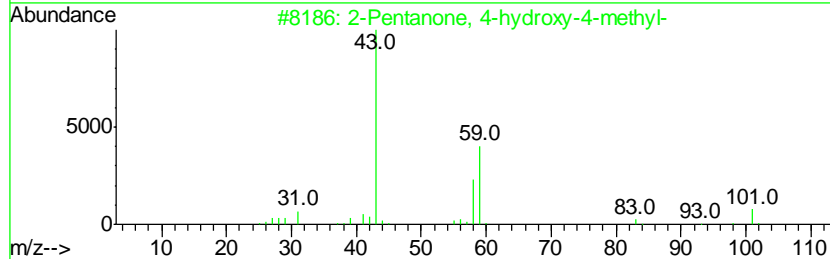
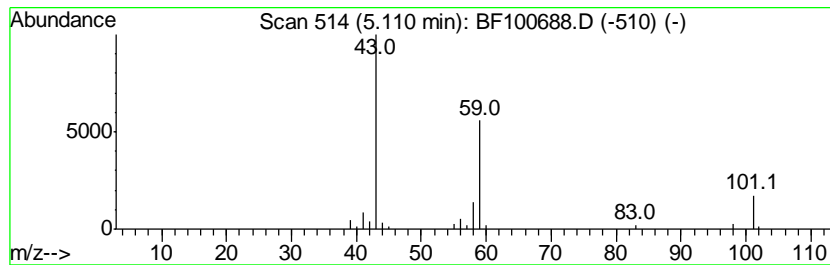
TIC Library : C:\DATABASE\NIST11.L  
 TIC Integration Parameters: LSCINT.P

\*\*\*\*\*  
 Peak Number 1 2-Pentanone, 4-hydroxy-4-me... Concentration Rank 3

R.T.	EstConc	Area	Relative to ISTD	R.T.
5.11	5.14 ng	142815	1,4-Dichlorobenzene-d4	6.88

Hit#	of	Tentative ID	MW	MolForm	CAS#	Qual
1	5	2-Pentanone, 4-hydroxy-4-methyl-	116	C6H12O2	000123-42-2	40
2		Acetic acid, 1,1-dimethylethyl e...	116	C6H12O2	000540-88-5	39
3		3-Hexanol	102	C6H14O	000623-37-0	36
4		2-Hexanol, 2-methyl-	116	C7H16O	000625-23-0	28
5		2,3-Butanedione, monooxime	101	C4H7NO2	000057-71-6	25



Data Path : Z:\HPCHEM1\BNA F\DATA\BF111717\  
 Data File : BF100688.D  
 Acq On : 17 Nov 2017 21:57  
 Operator : SJ/JU  
 Sample : I6486-04  
 Misc :  
 ALS Vial : 10 Sample Multiplier: 1

Instrument :  
 BNA\_F  
 ClientSampleId :  
 EPE-L-9(5-10)

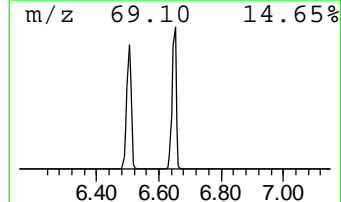
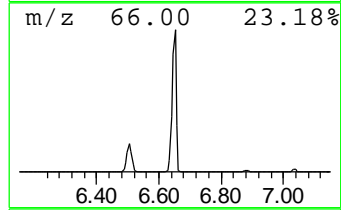
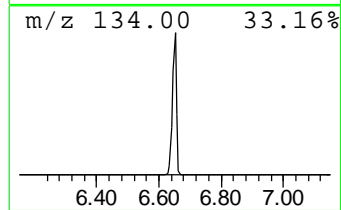
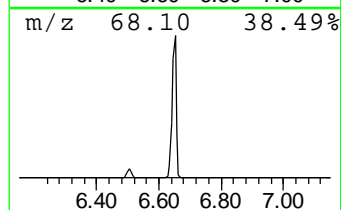
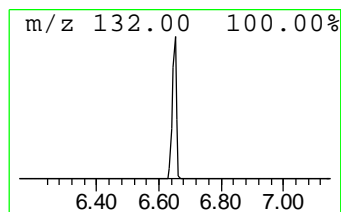
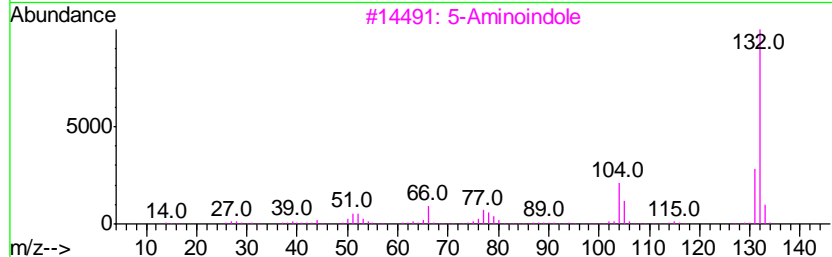
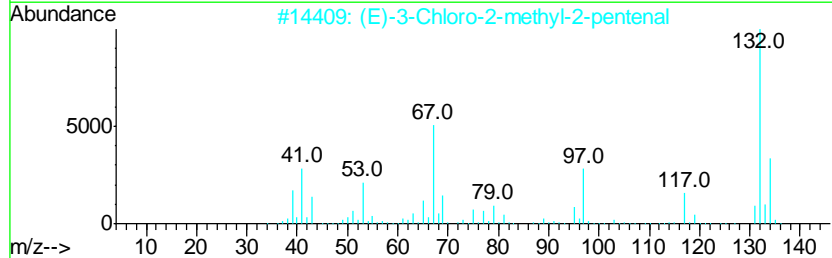
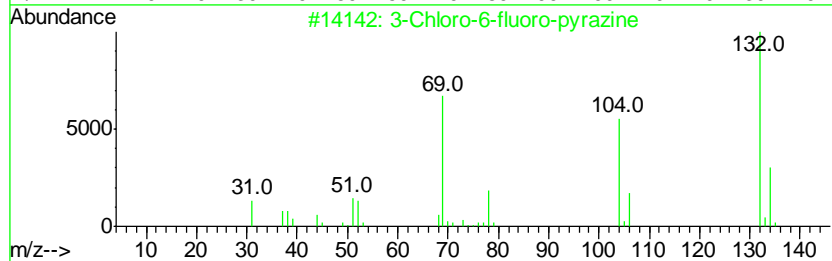
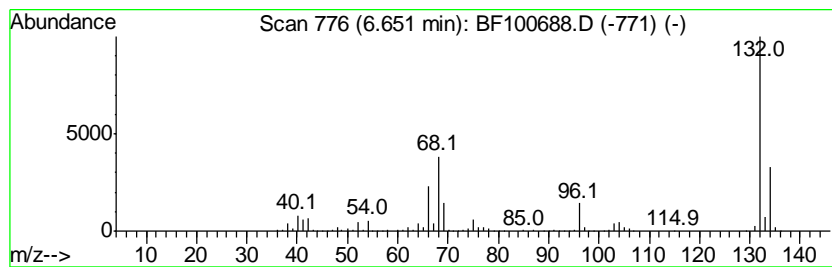
Quant Method : Z:\HPCHEM1\BNA F\METHODS\8270-BF110817.M  
 Quant Title : ASP BNA STANDARDS FOR 5 POINT CALIBRATION

TIC Library : C:\DATABASE\NIST11.L  
 TIC Integration Parameters: LSCINT.P

\*\*\*\*\*  
 Peak Number 2 unknown6.65 Concentration Rank 1

R.T.	EstConc	Area	Relative to ISTD	R.T.
6.65	66.25 ng	1842510	1,4-Dichlorobenzene-d4	6.88

Hit#	of	Tentative ID	MW	MolForm	CAS#	Qual
1	5	3-Chloro-6-fluoro-pyrazine	132	C4H2ClFN2	1000146-10-7	27
2		(E)-3-Chloro-2-methyl-2-pentenal	132	C6H9ClO	031357-76-3	27
3		5-Aminoindole	132	C8H8N2	005192-03-0	12
4		4-Chloro-2-fluoro-pyrimidine	132	C4H2ClFN2	051422-00-5	9
5		Xenon	132	Xe	007440-63-3	9



Data Path : Z:\HPCHEM1\BNA F\DATA\BF111717\  
 Data File : BF100688.D  
 Acq On : 17 Nov 2017 21:57  
 Operator : SJ/JU  
 Sample : I6486-04  
 Misc :  
 ALS Vial : 10 Sample Multiplier: 1

Instrument :  
 BNA\_F  
 ClientSampled :  
 EPE-L-9(5-10)

Quant Method : Z:\HPCHEM1\BNA F\METHODS\8270-BF110817.M  
 Quant Title : ASP BNA STANDARDS FOR 5 POINT CALIBRATION

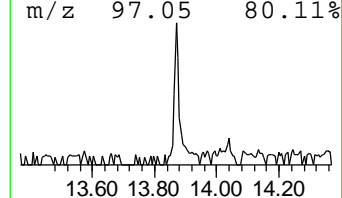
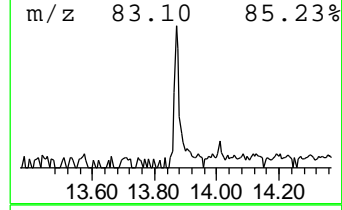
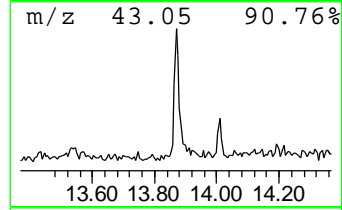
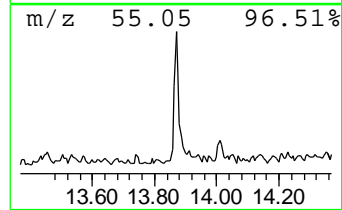
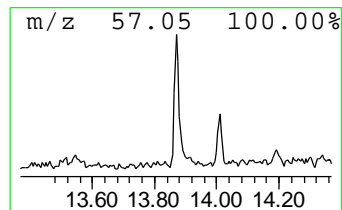
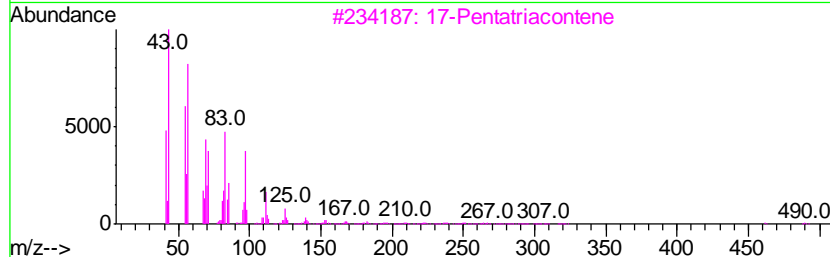
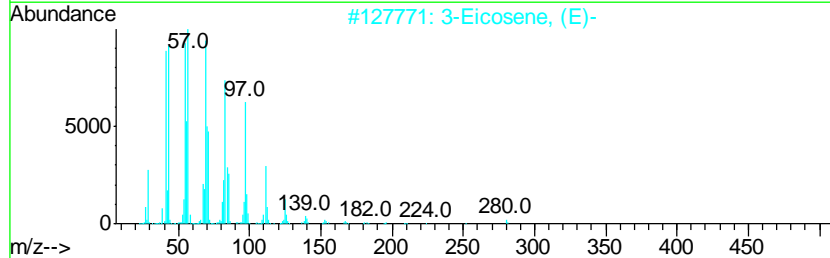
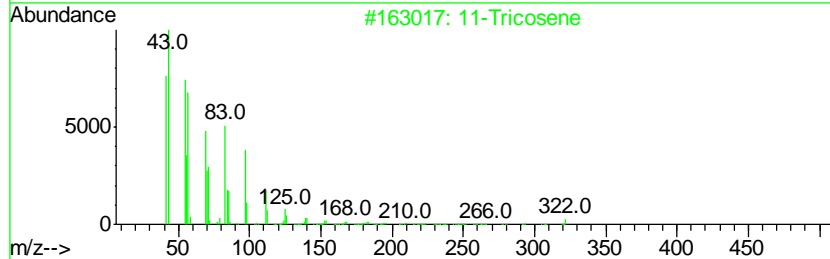
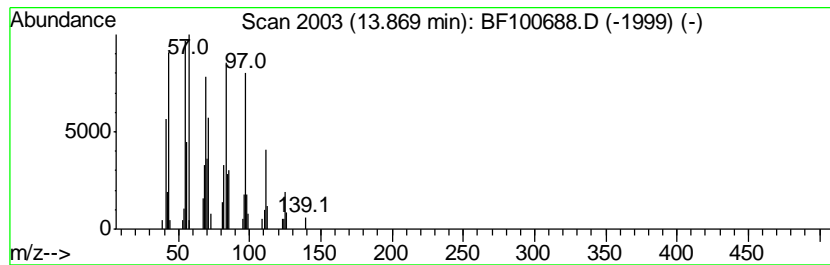
TIC Library : C:\DATABASE\NIST11.L  
 TIC Integration Parameters: LSCINT.P

\*\*\*\*\*  
 Peak Number 4 11-Tricosene Concentration Rank 4

R.T.	EstConc	Area	Relative to ISTD	R.T.
13.87	2.88 ng	86179	Chrysene-d12	14.04

Hit#	of	Tentative ID	MW	MolForm	CAS#	Qual
1	5	11-Tricosene	322	C23H46	052078-56-5	91
2		3-Eicosene, (E)-	280	C20H40	074685-33-9	87
3		17-Pentatriacontene	491	C35H70	006971-40-0	86
4		Trichloroacetic acid, pentadecyl...	372	C17H31Cl3O2	074339-53-0	81
5		1-Docosene	308	C22H44	001599-67-3	81



Data Path : Z:\HPCHEM1\BNA\_F\DATA\BF111717\  
Data File : BF100688.D  
Acq On : 17 Nov 2017 21:57  
Operator : SJ/JU  
Sample : I6486-04  
Misc :  
ALS Vial : 10 Sample Multiplier: 1

Instrument :  
BNA\_F  
ClientSampleId :  
EPE-L-9(5-10)

Quant Method : Z:\HPCHEM1\BNA\_F\METHODS\8270-BF110817.M  
Quant Title : ASP BNA STANDARDS FOR 5 POINT CALIBRATION

TIC Library : C:\DATABASE\NIST11.L  
TIC Integration Parameters: LSCINT.P

TIC Top Hit name	RT	EstConc	Units	Response	--Internal Standard--			
					#	RT	Resp	Conc
2-Pentanone, 4-hy...	5.11	5.1	ng	142815	1	6.88	556190	20.0
unknown6.65	6.65	66.3	ng	1842510	1	6.88	556190	20.0
11-Tricosene	13.87	2.9	ng	86179	5	14.04	597596	20.0