

Data Path : Z:\svoasrv\HPCHEM1\BNA_F\Data\BF111720\
 Data File : BF122354.D
 Acq On : 17 Nov 2020 19:24
 Operator : JU/CG
 Sample : L4735-01
 Misc :
 ALS Vial : 17 Sample Multiplier: 1

Instrument :
 BNA_F
 ClientSampleId :
 R-LA-33-3-WC

Quant Time: Nov 18 00:23:34 2020
 Quant Method : Z:\SVOASRV\HPCHEM1\BNA_F\METHODS\8270-BF110920.M
 Quant Title : ASP BNA STANDARDS FOR 5 POINT CALIBRATION
 QLast Update : Tue Nov 10 12:25:42 2020
 Response via : Initial Calibration

Compound	R.T.	QIon	Response	Conc	Units	Dev(Min)

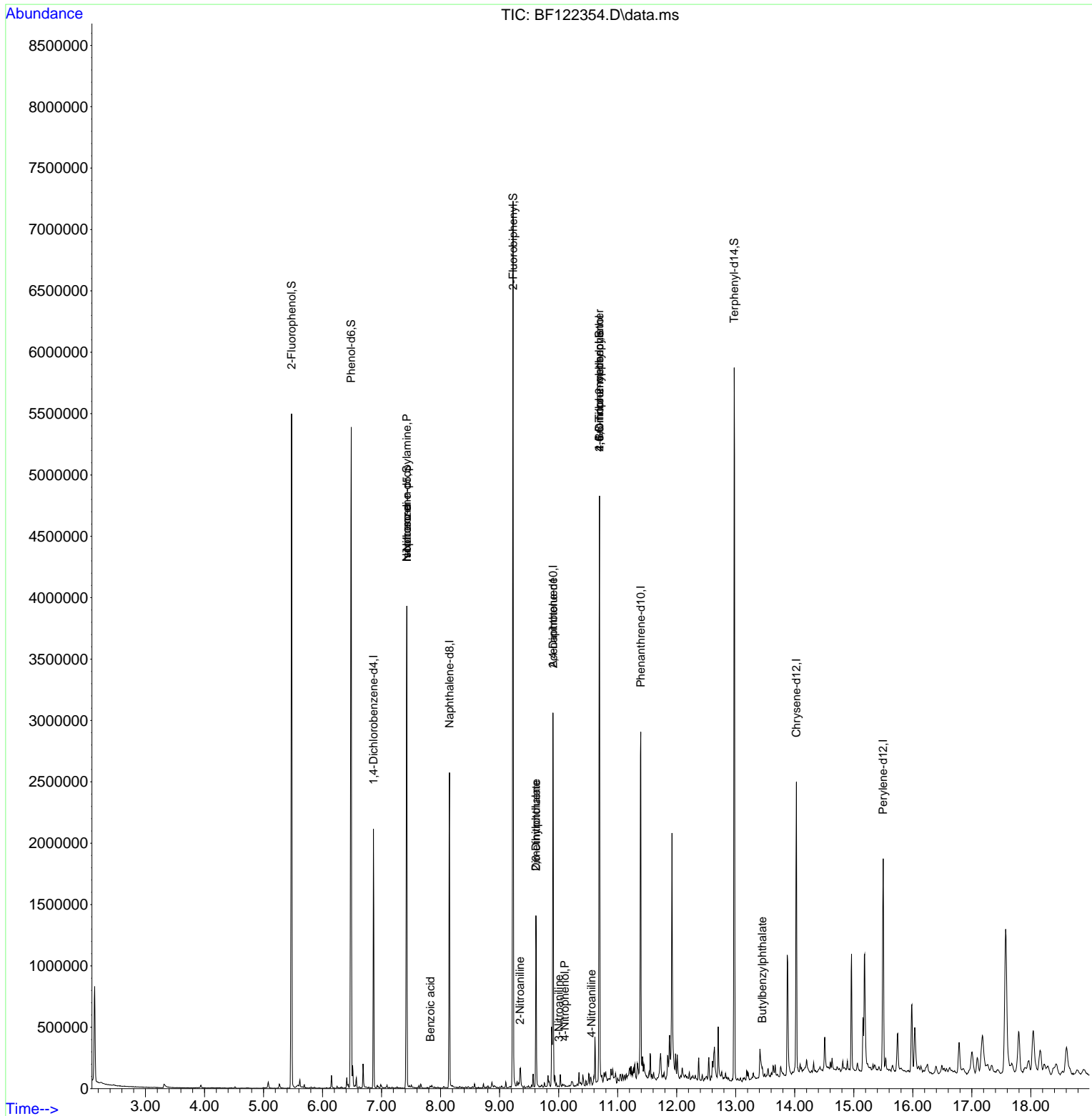
Internal Standards						
1) 1,4-Dichlorobenzene-d4	6.863	152	281999	20.00	ng	0.00
21) Naphthalene-d8	8.151	136	1078948	20.00	ng	0.00
39) Acenaphthene-d10	9.904	164	587061	20.00	ng	0.00
64) Phenanthrene-d10	11.392	188	1043636	20.00	ng	0.00
76) Chrysene-d12	14.027	240	757503	20.00	ng	0.00
86) Perylene-d12	15.498	264	774961	20.00	ng	0.00
System Monitoring Compounds						
5) 2-Fluorophenol	5.475	112	1540510	83.88	ng	0.00
7) Phenol-d6	6.487	99	1987801	82.74	ng	0.00
23) Nitrobenzene-d5	7.428	82	1224720	69.49	ng	0.00
42) 2,4,6-Tribromophenol	10.692	330	593940	94.26	ng	0.00
45) 2-Fluorobiphenyl	9.228	172	2092056	55.68	ng	0.00
79) Terphenyl-d14	12.974	244	1881802	52.63	ng	0.00
Target Compounds						
9) Benzaldehyde	6.410	77	14434	Below Cal		99
19) n-Nitroso-di-n-propyla...	7.428	70	167921	11.70	ng	# 75
25) Isophorone	7.428	82	1209891	30.79	ng	# 67
32) Benzoic acid	7.828	122	7266	8.55	ng	97
48) 2-Nitroaniline	9.345	65	3255	5.43	ng	# 34
50) Dimethylphthalate	9.616	163	554409	13.29	ng	100
51) 2,6-Dinitrotoluene	9.616	165	5861	4.40	ng	# 6
53) 3-Nitroaniline	10.004	138	112	3.57	ng	# 1
56) 4-Nitrophenol	10.104	139	137	5.42	ng	# 10
57) 2,4-Dinitrotoluene	9.904	165	77062	10.66	ng	# 20
62) 4-Nitroaniline	10.557	138	561	3.43	ng	80
65) 4,6-Dinitro-2-methylph...	10.692	198	1329	6.52	ng	# 1
67) 4-Bromophenyl-phenylether	10.692	248	37806	3.08	ng	# 1
80) Butylbenzylphthalate	13.451	149	1942	3.37	ng	# 26

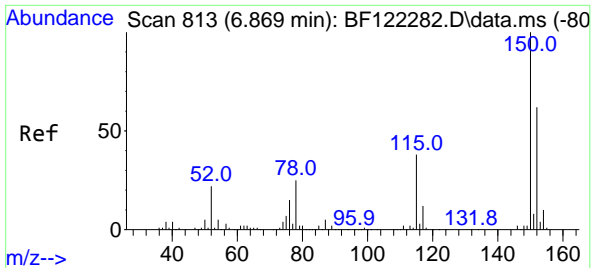
(#) = qualifier out of range (m) = manual integration (+) = signals summed

Data Path : Z:\svoasrv\HPCHEM1\BNA_F\Data\BF111720\
 Data File : BF122354.D
 Acq On : 17 Nov 2020 19:24
 Operator : JU/CG
 Sample : L4735-01
 Misc :
 ALS Vial : 17 Sample Multiplier: 1

Instrument :
 BNA_F
 ClientSampled :
 R-LA-33-3-WC

Quant Time: Nov 18 00:23:34 2020
 Quant Method : Z:\SVOASRV\HPCHEM1\BNA_F\METHODS\8270-BF110920.M
 Quant Title : ASP BNA STANDARDS FOR 5 POINT CALIBRATION
 QLast Update : Tue Nov 10 12:25:42 2020
 Response via : Initial Calibration

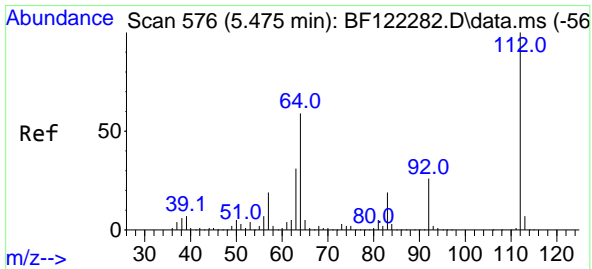
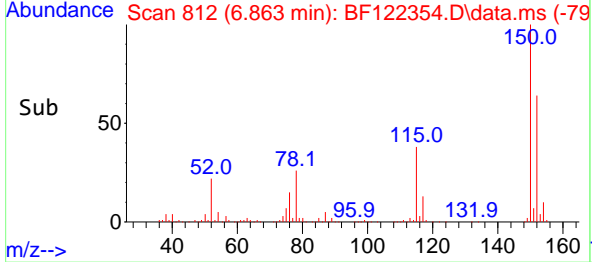
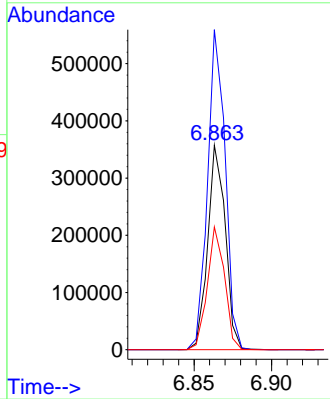
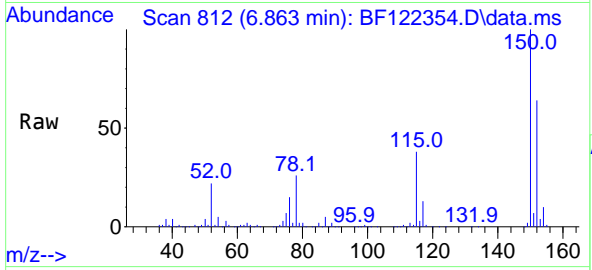




#1
 1,4-Dichlorobenzene-d4
 Concen: 20.00 ng
 RT: 6.863 min Scan# 812
 Delta R.T. -0.006 min
 Lab File: BF122354.D
 Acq: 17 Nov 2020 19:24

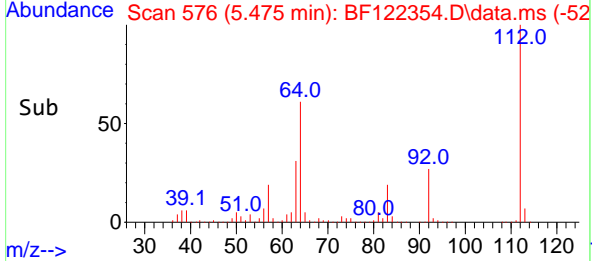
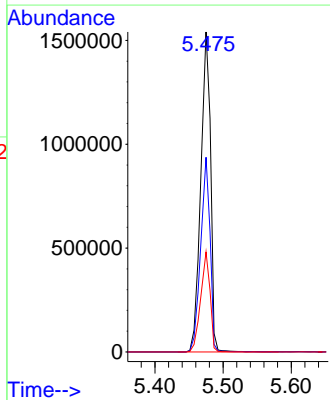
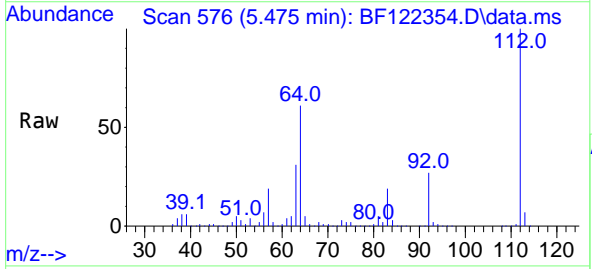
Instrument :
 BNA_F
ClientSampled :
 R-LA-33-3-WC

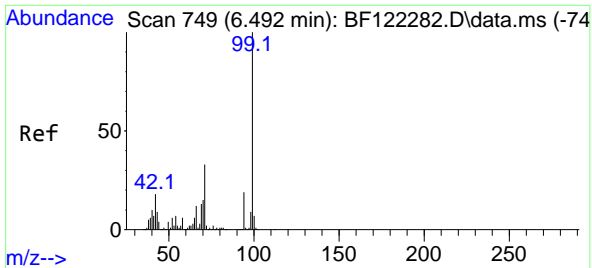
Tgt Ion:152 Resp: 281999
 Ion Ratio Lower Upper
 152 100
 150 156.5 125.3 187.9
 115 60.0 51.9 77.9



#5
 2-Fluorophenol
 Concen: 83.88 ng
 RT: 5.475 min Scan# 576
 Delta R.T. 0.000 min
 Lab File: BF122354.D
 Acq: 17 Nov 2020 19:24

Tgt Ion:112 Resp: 1540510
 Ion Ratio Lower Upper
 112 100
 64 60.9 50.4 75.6
 63 31.3 25.8 38.6



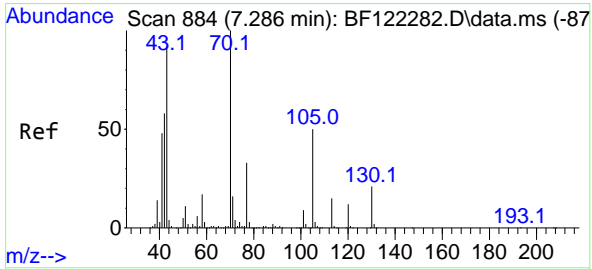
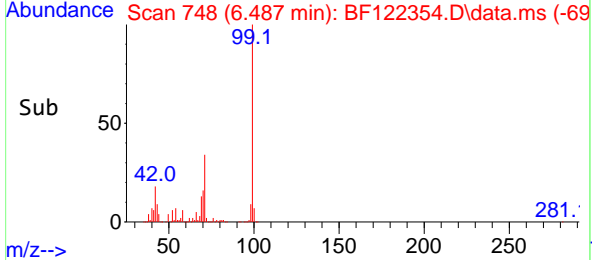
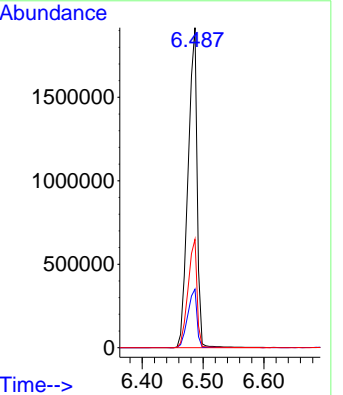
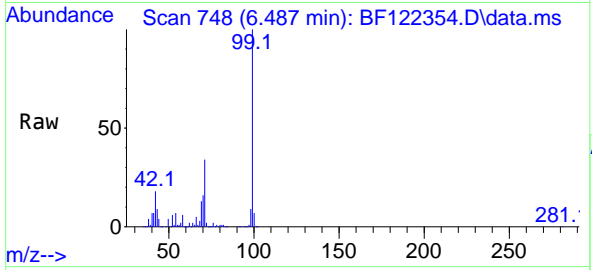


#7
Phenol-d6
Concen: 82.74 ng
RT: 6.487 min Scan# 748
Delta R.T. -0.006 min
Lab File: BF122354.D
Acq: 17 Nov 2020 19:24

Instrument :
BNA_F
ClientSampled :
R-LA-33-3-WC

Tgt Ion: 99 Resp: 1987801

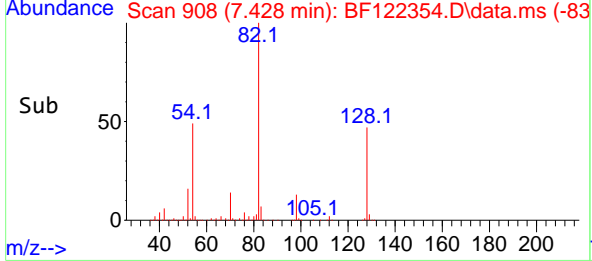
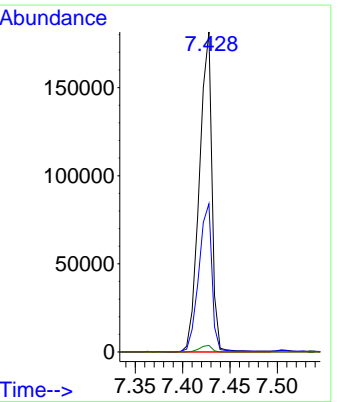
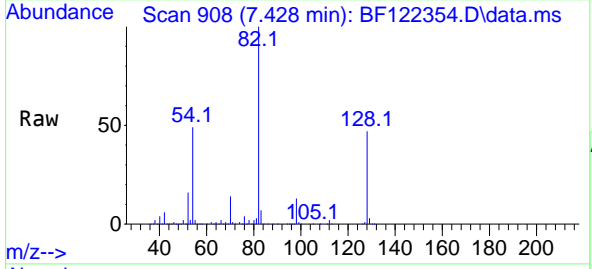
Ion	Ratio	Lower	Upper
99	100		
42	18.3	15.9	23.9
71	33.9	27.1	40.7

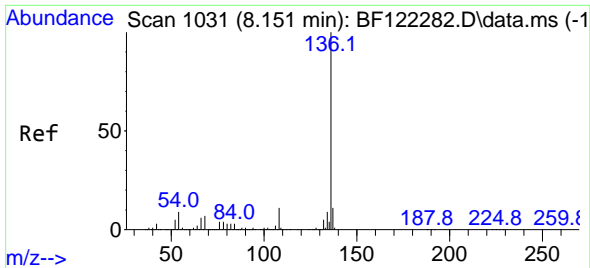


#19
n-Nitroso-di-n-propylamine
Concen: 11.70 ng
RT: 7.428 min Scan# 908
Delta R.T. 0.142 min
Lab File: BF122354.D
Acq: 17 Nov 2020 19:24

Tgt Ion: 70 Resp: 167921

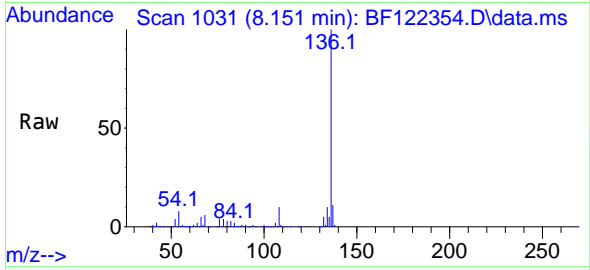
Ion	Ratio	Lower	Upper
70	100		
42	46.3	50.2	75.4#
101	0.0	7.5	11.3#
130	2.0	15.5	23.3#





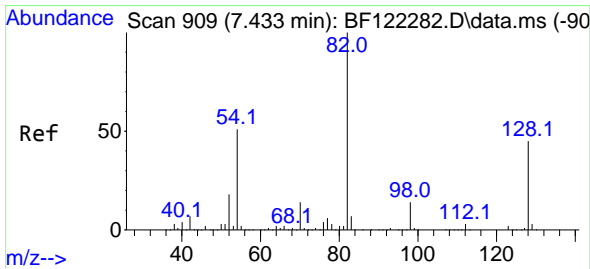
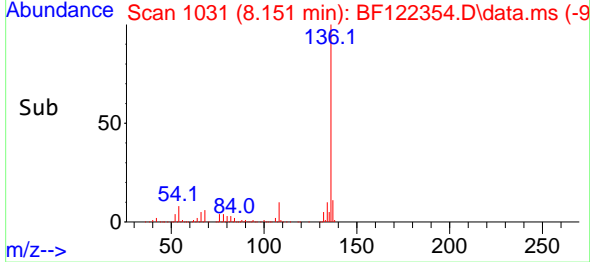
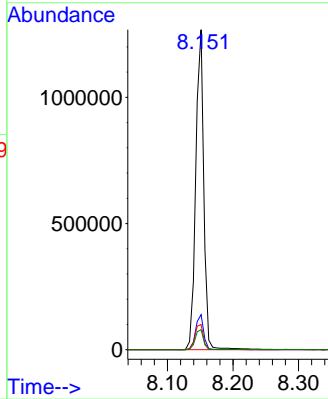
#21
 Naphthalene-d8
 Concen: 20.00 ng
 RT: 8.151 min Scan# 1031
 Delta R.T. 0.000 min
 Lab File: BF122354.D
 Acq: 17 Nov 2020 19:24

Instrument :
 BNA_F
 ClientSampleId :
 R-LA-33-3-WC

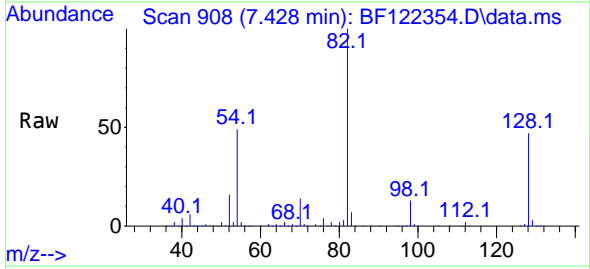


Tgt Ion:136 Resp: 1078948

Ion	Ratio	Lower	Upper
136	100		
137	11.0	8.6	13.0
54	7.9	7.1	10.7
68	6.3	5.0	7.4

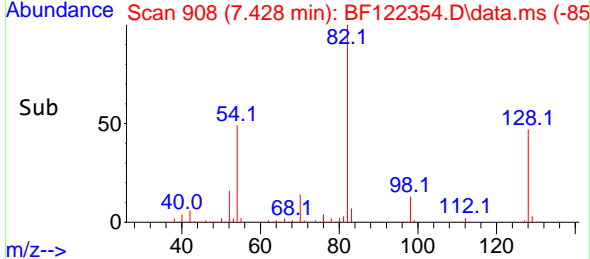
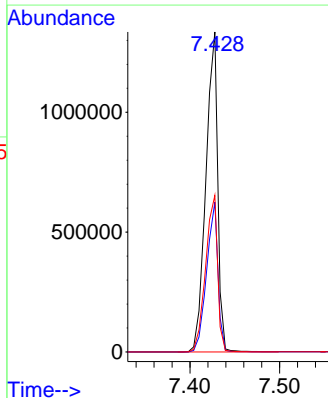


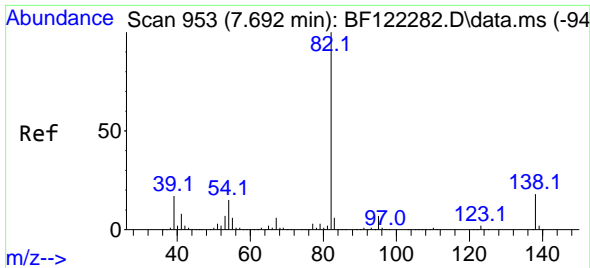
#23
 Nitrobenzene-d5
 Concen: 69.49 ng
 RT: 7.428 min Scan# 908
 Delta R.T. -0.006 min
 Lab File: BF122354.D
 Acq: 17 Nov 2020 19:24



Tgt Ion: 82 Resp: 1224720

Ion	Ratio	Lower	Upper
82	100		
128	46.8	35.0	52.4
54	48.9	43.9	65.9

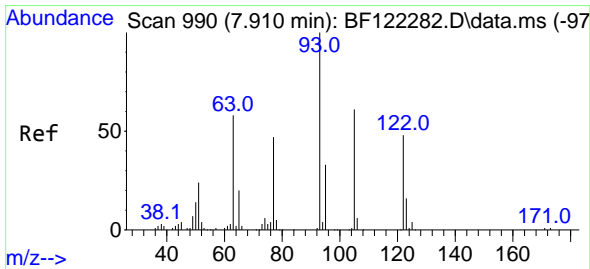
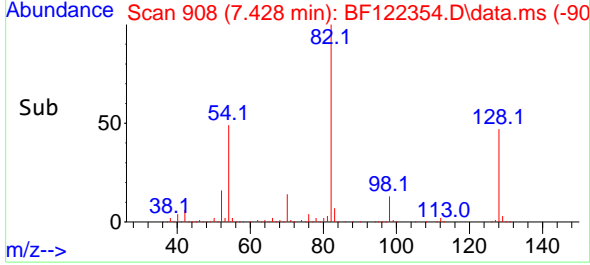
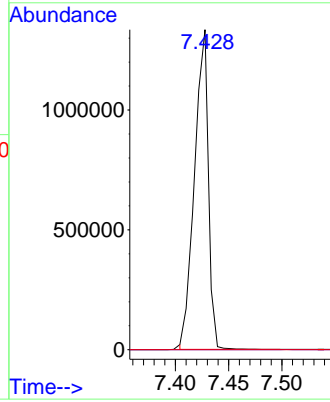
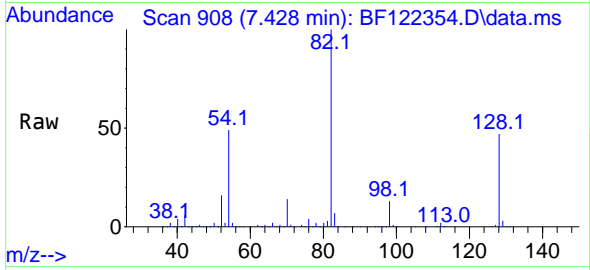




#25
 Isophorone
 Concen: 30.79 ng
 RT: 7.428 min Scan# 908
 Delta R.T. -0.264 min
 Lab File: BF122354.D
 Acq: 17 Nov 2020 19:24

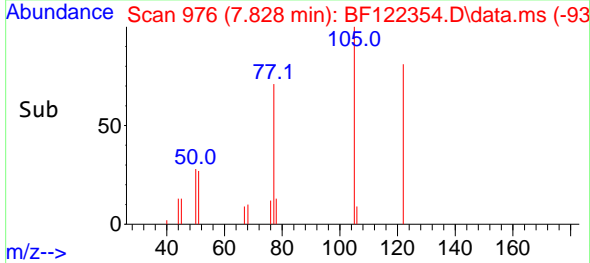
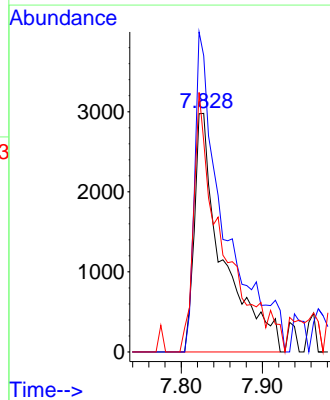
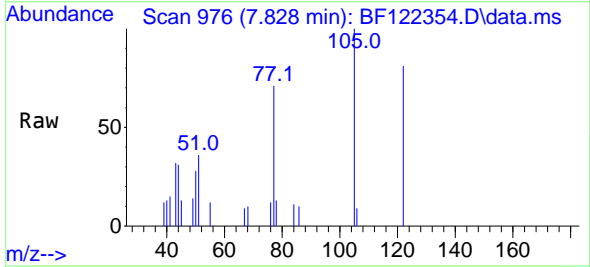
Instrument :
 BNA_F
 ClientSampled :
 R-LA-33-3-WC

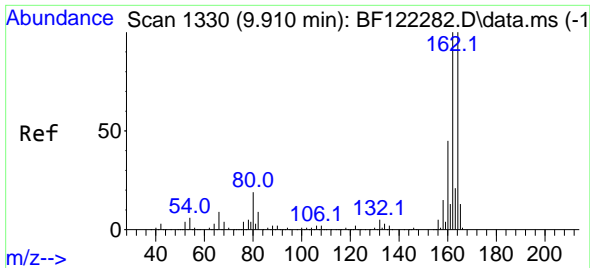
Tgt Ion: 82 Resp: 1209891
 Ion Ratio Lower Upper
 82 100
 95 0.0 5.4 8.0#
 138 0.0 13.4 20.0#



#32
 Benzoic acid
 Concen: 8.55 ng
 RT: 7.828 min Scan# 976
 Delta R.T. -0.082 min
 Lab File: BF122354.D
 Acq: 17 Nov 2020 19:24

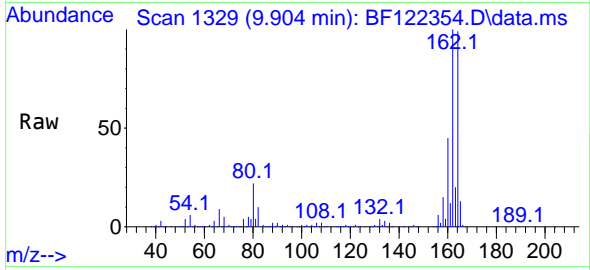
Tgt Ion:122 Resp: 7266
 Ion Ratio Lower Upper
 122 100
 105 124.1 103.3 143.3
 77 88.3 73.9 113.9



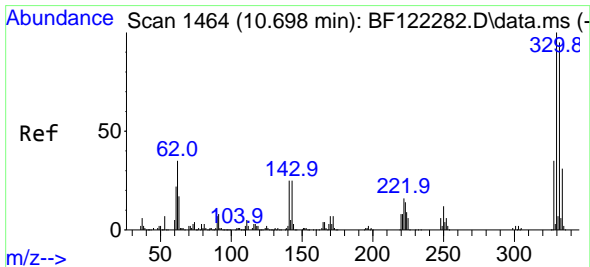
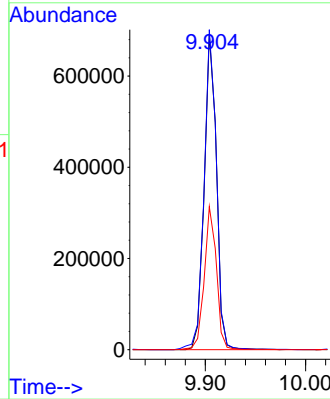
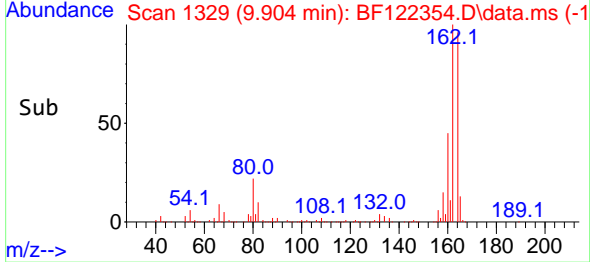


#39
 Acenaphthene-d10
 Concen: 20.00 ng
 RT: 9.904 min Scan# 1329
 Delta R.T. -0.006 min
 Lab File: BF122354.D
 Acq: 17 Nov 2020 19:24

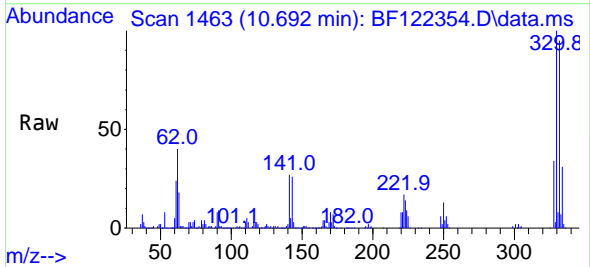
Instrument :
 BNA_F
 ClientSampleId :
 R-LA-33-3-WC



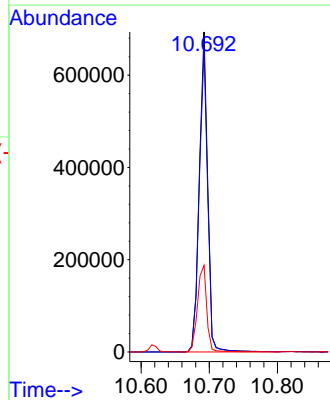
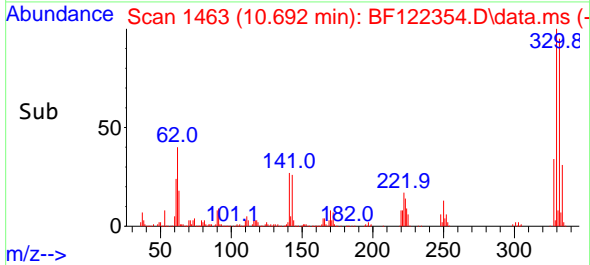
Tgt Ion:164 Resp: 587061
 Ion Ratio Lower Upper
 164 100
 162 101.5 83.2 124.8
 160 45.4 37.5 56.3

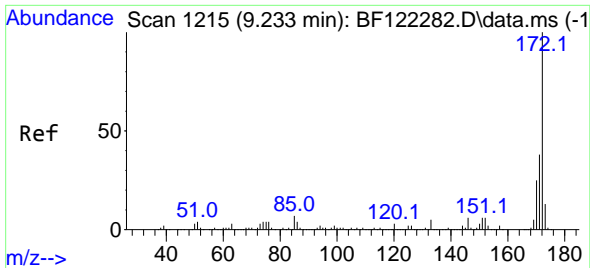


#42
 2,4,6-Tribromophenol
 Concen: 94.26 ng
 RT: 10.692 min Scan# 1463
 Delta R.T. -0.006 min
 Lab File: BF122354.D
 Acq: 17 Nov 2020 19:24



Tgt Ion:330 Resp: 593940
 Ion Ratio Lower Upper
 330 100
 332 95.3 77.3 115.9
 141 29.9 22.3 33.5



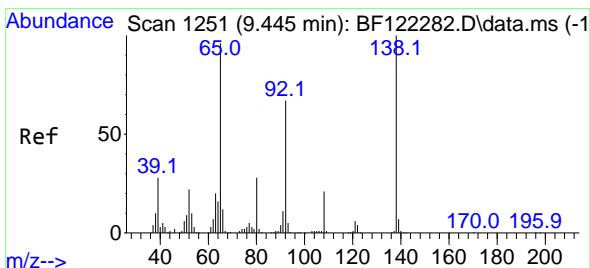
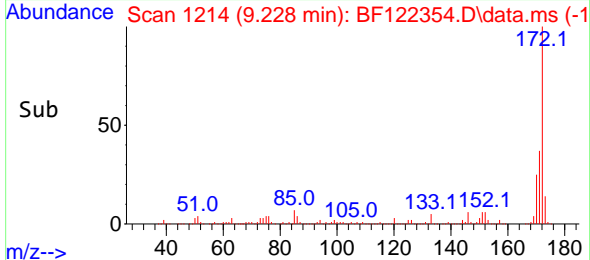
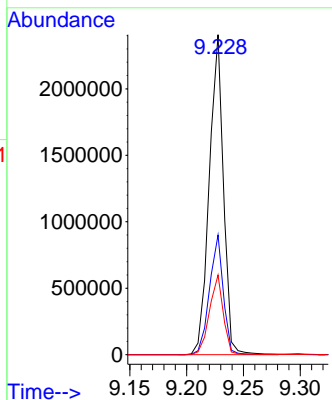
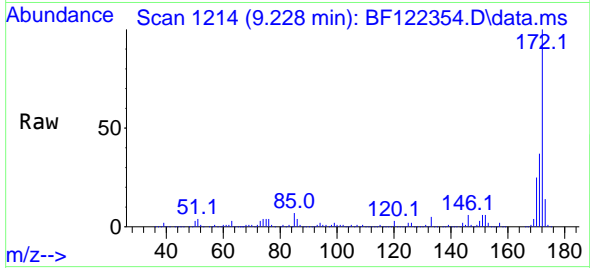


#45
 2-Fluorobiphenyl
 Concen: 55.68 ng
 RT: 9.228 min Scan# 1214
 Delta R.T. -0.006 min
 Lab File: BF122354.D
 Acq: 17 Nov 2020 19:24

Instrument :
 BNA_F
 ClientSampled :
 R-LA-33-3-WC

Tgt Ion:172 Resp: 2092056

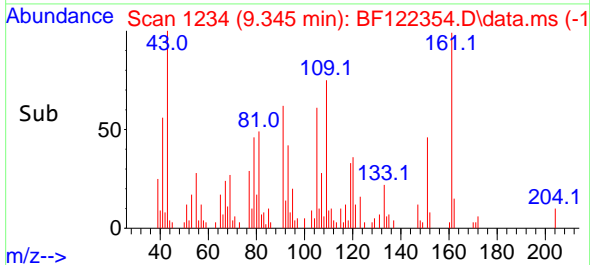
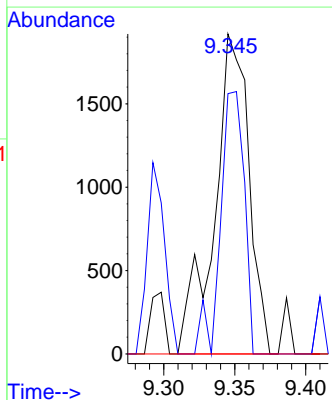
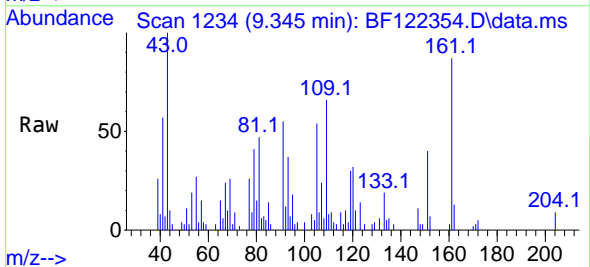
Ion	Ratio	Lower	Upper
172	100		
171	37.4	29.1	43.7
170	24.9	19.8	29.6

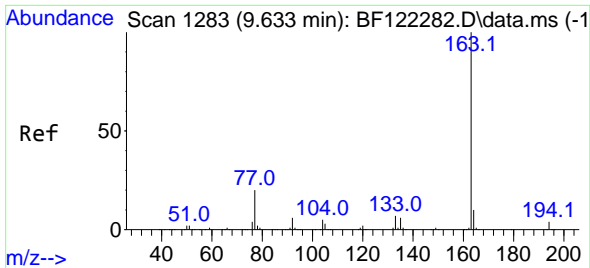


#48
 2-Nitroaniline
 Concen: 5.43 ng
 RT: 9.345 min Scan# 1234
 Delta R.T. -0.100 min
 Lab File: BF122354.D
 Acq: 17 Nov 2020 19:24

Tgt Ion: 65 Resp: 3255

Ion	Ratio	Lower	Upper
65	100		
92	81.3	55.1	82.7
138	0.0	80.5	120.7#

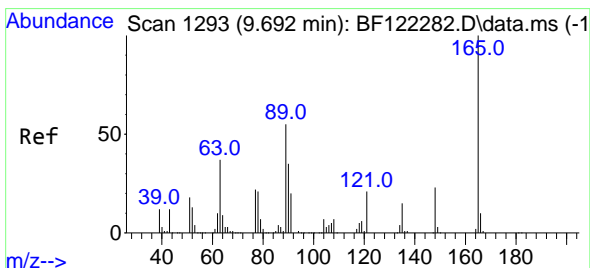
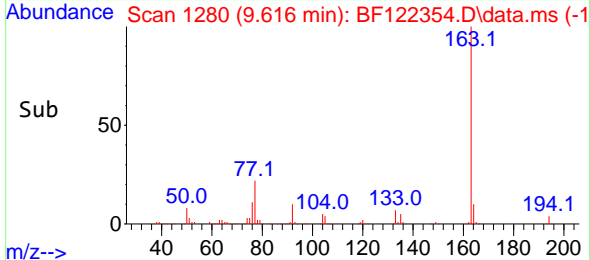
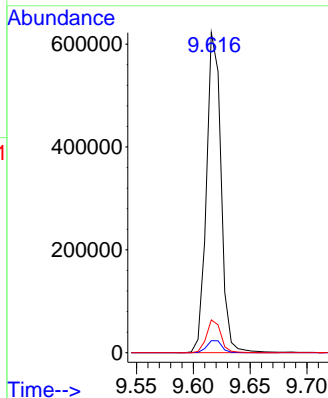
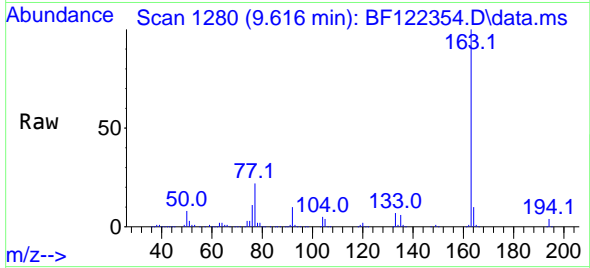




#50
 Dimethylphthalate
 Concen: 13.29 ng
 RT: 9.616 min Scan# 1280
 Delta R.T. -0.017 min
 Lab File: BF122354.D
 Acq: 17 Nov 2020 19:24

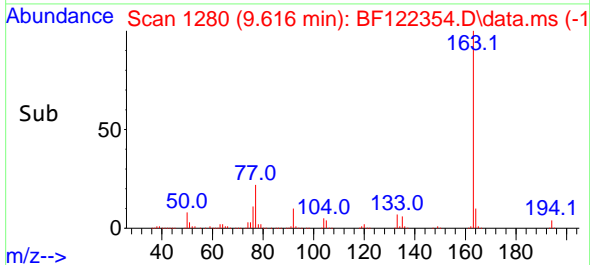
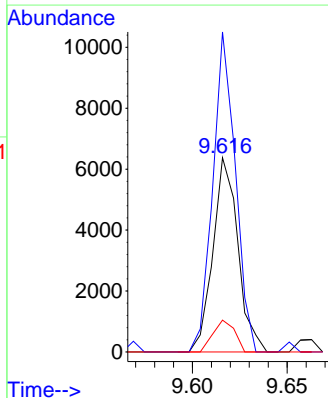
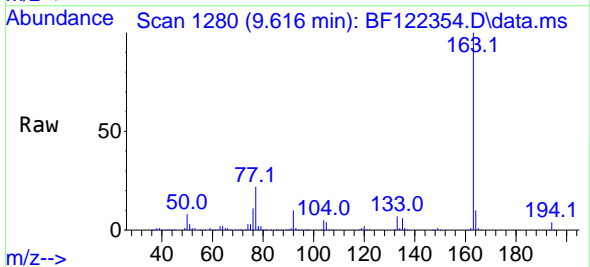
Instrument :
 BNA_F
 ClientSampleId :
 R-LA-33-3-WC

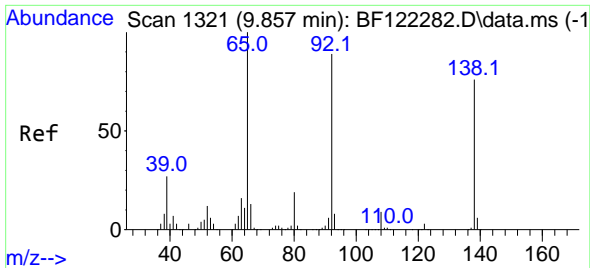
Tgt Ion:163 Resp: 554409
 Ion Ratio Lower Upper
 163 100
 194 3.7 3.3 4.9
 164 10.3 8.2 12.4



#51
 2,6-Dinitrotoluene
 Concen: 4.40 ng
 RT: 9.616 min Scan# 1280
 Delta R.T. -0.076 min
 Lab File: BF122354.D
 Acq: 17 Nov 2020 19:24

Tgt Ion:165 Resp: 5861
 Ion Ratio Lower Upper
 165 100
 63 164.7 51.8 77.6#
 89 16.4 49.0 73.6#



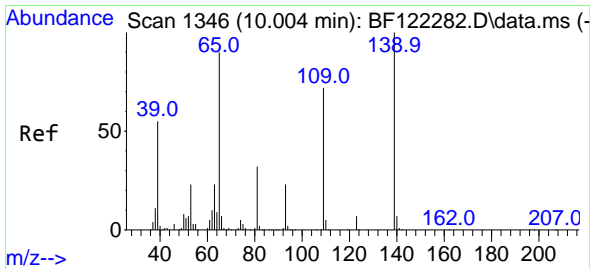
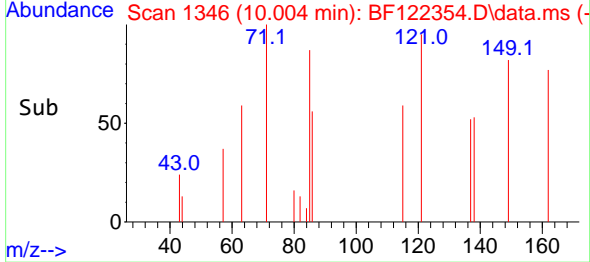
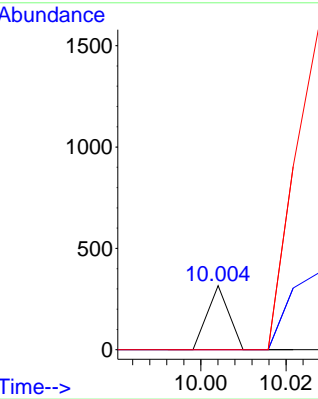
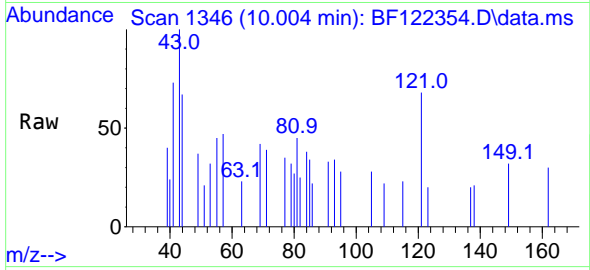


#53
 3-Nitroaniline
 Concen: 3.57 ng
 RT: 10.004 min Scan# 1346
 Delta R.T. 0.147 min
 Lab File: BF122354.D
 Acq: 17 Nov 2020 19:24

Instrument :
 BNA_F
 ClientSampled :
 R-LA-33-3-WC

Tgt Ion:138 Resp: 112

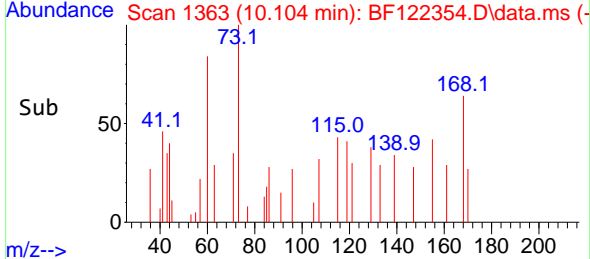
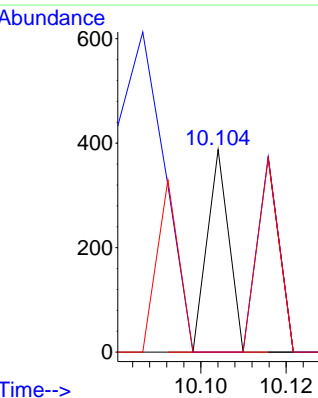
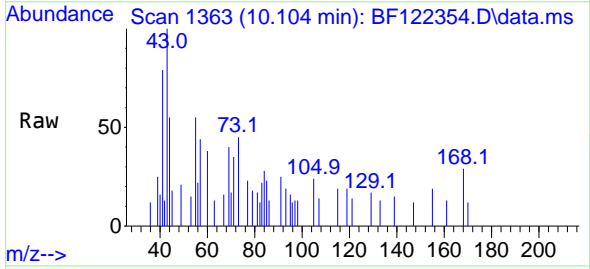
Ion	Ratio	Lower	Upper
138	100		
108	0.0	8.6	13.0#
92	0.0	96.6	144.8#

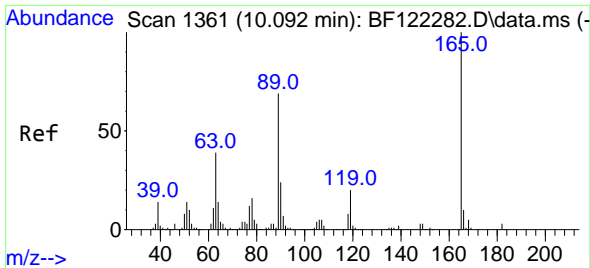


#56
 4-Nitrophenol
 Concen: 5.42 ng
 RT: 10.104 min Scan# 1363
 Delta R.T. 0.100 min
 Lab File: BF122354.D
 Acq: 17 Nov 2020 19:24

Tgt Ion:139 Resp: 137

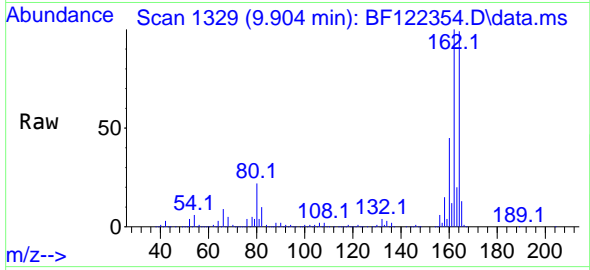
Ion	Ratio	Lower	Upper
139	100		
109	0.0	45.4	85.4#
65	0.0	68.4	108.4#





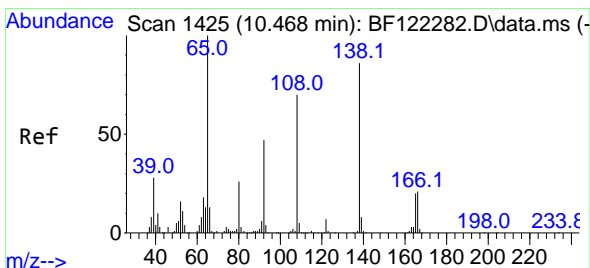
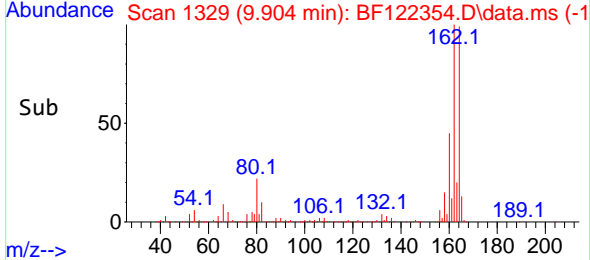
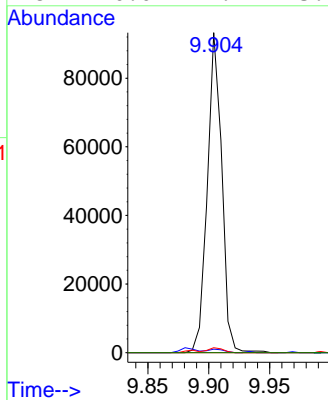
#57
 2,4-Dinitrotoluene
 Concen: 10.66 ng
 RT: 9.904 min Scan# 1329
 Delta R.T. -0.188 min
 Lab File: BF122354.D
 Acq: 17 Nov 2020 19:24

Instrument :
 BNA_F
 ClientSampleId :
 R-LA-33-3-WC

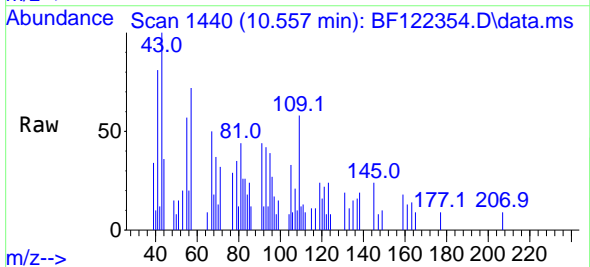


Tgt Ion:165 Resp: 77062

Ion	Ratio	Lower	Upper
165	100		
63	1.1	41.3	61.9#
89	1.6	61.8	92.8#
182	0.0	2.1	3.1#

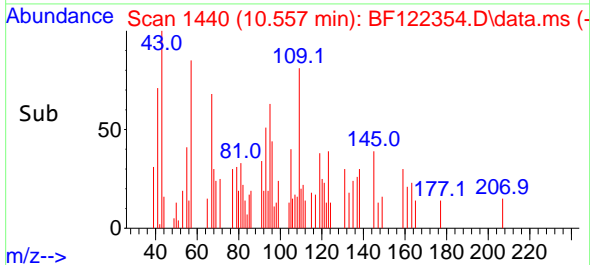
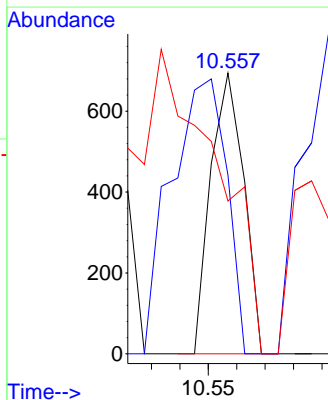


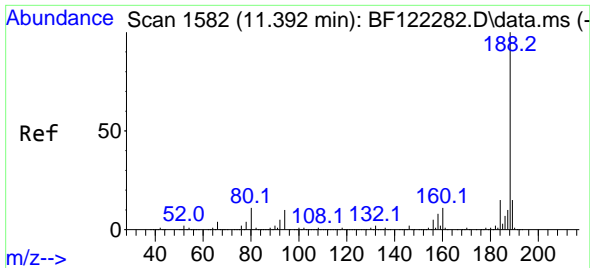
#62
 4-Nitroaniline
 Concen: 3.43 ng
 RT: 10.557 min Scan# 1440
 Delta R.T. 0.089 min
 Lab File: BF122354.D
 Acq: 17 Nov 2020 19:24



Tgt Ion:138 Resp: 561

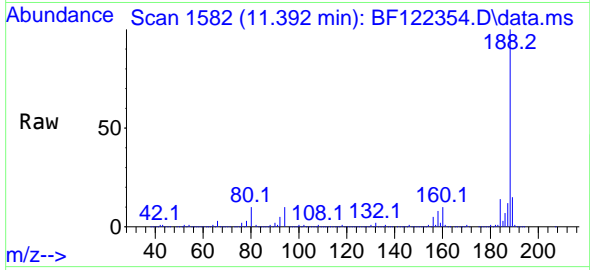
Ion	Ratio	Lower	Upper
138	100		
92	63.7	31.0	71.0
108	54.5	51.5	91.5



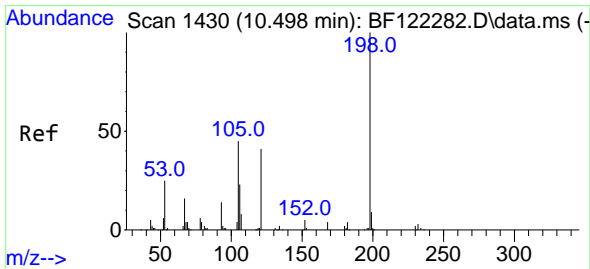
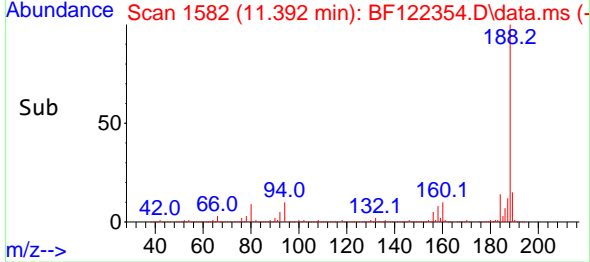
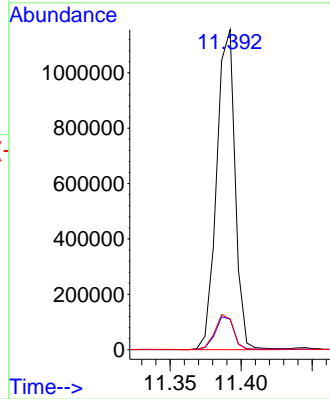


#64
 Phenanthrene-d10
 Concen: 20.00 ng
 RT: 11.392 min Scan# 1582
 Delta R.T. 0.000 min
 Lab File: BF122354.D
 Acq: 17 Nov 2020 19:24

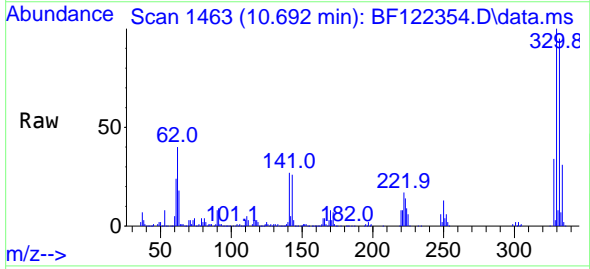
Instrument :
 BNA_F
 ClientSampled :
 R-LA-33-3-WC



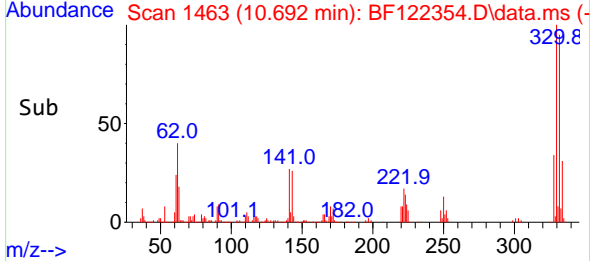
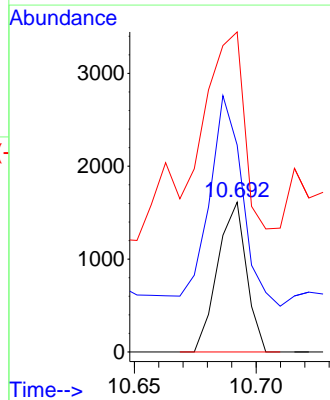
Tgt Ion:188 Resp: 1043636
 Ion Ratio Lower Upper
 188 100
 94 9.6 8.3 12.5
 80 9.6 9.1 13.7

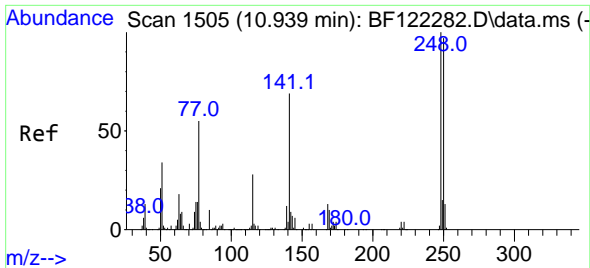


#65
 4,6-Dinitro-2-methylphenol
 Concen: 6.52 ng
 RT: 10.692 min Scan# 1463
 Delta R.T. 0.194 min
 Lab File: BF122354.D
 Acq: 17 Nov 2020 19:24



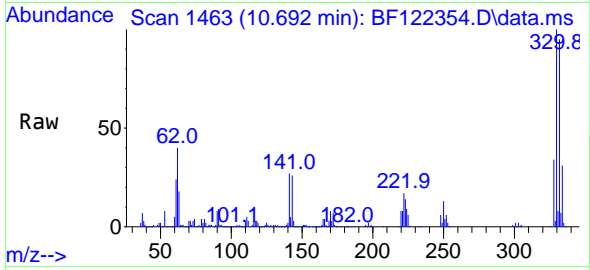
Tgt Ion:198 Resp: 1329
 Ion Ratio Lower Upper
 198 100
 51 138.1 29.6 69.6#
 105 213.6 24.4 64.4#



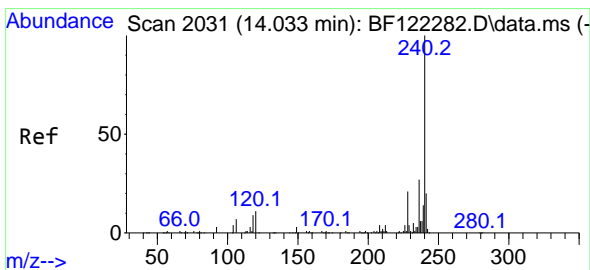
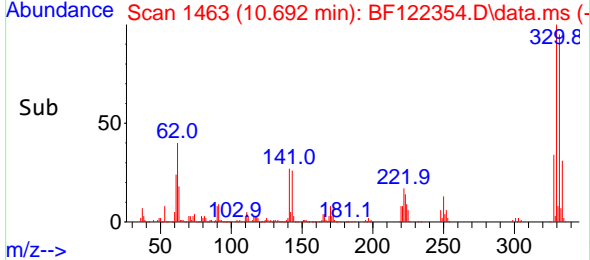
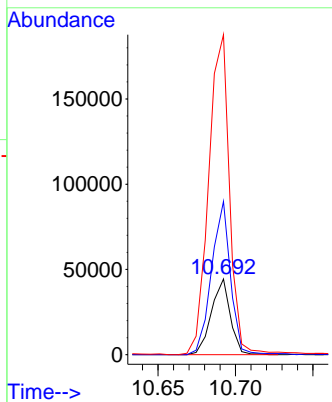


#67
 4-Bromophenyl-phenylether
 Concen: 3.08 ng
 RT: 10.692 min Scan# 1463
 Delta R.T. -0.247 min
 Lab File: BF122354.D
 Acq: 17 Nov 2020 19:24

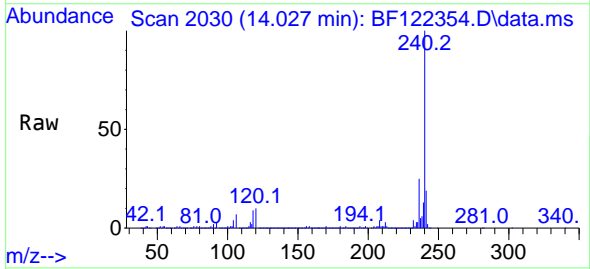
Instrument :
 BNA_F
 ClientSampled :
 R-LA-33-3-WC



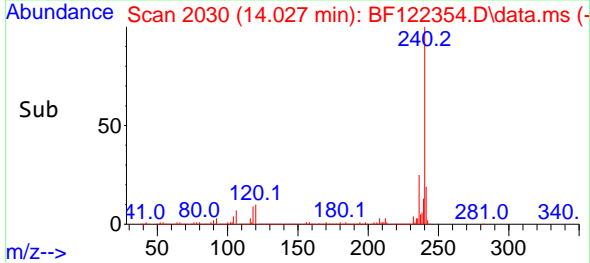
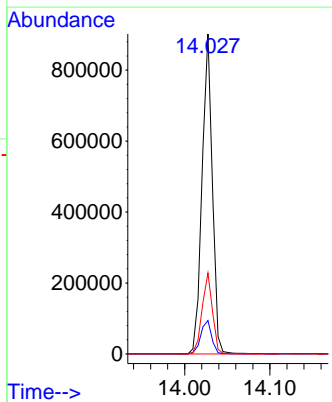
Tgt Ion:248 Resp: 37806
 Ion Ratio Lower Upper
 248 100
 250 202.7 77.0 115.6#
 141 423.0 53.7 80.5#

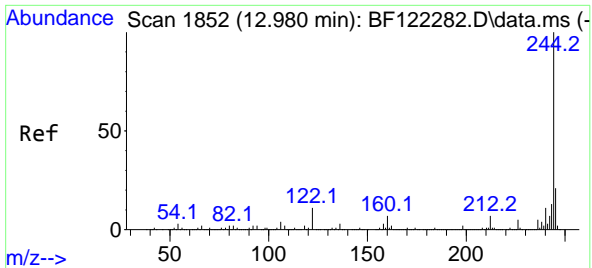


#76
 Chrysene-d12
 Concen: 20.00 ng
 RT: 14.027 min Scan# 2030
 Delta R.T. -0.006 min
 Lab File: BF122354.D
 Acq: 17 Nov 2020 19:24



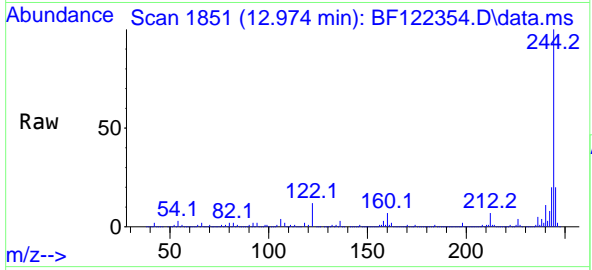
Tgt Ion:240 Resp: 757503
 Ion Ratio Lower Upper
 240 100
 120 10.4 9.2 13.8
 236 25.3 20.9 31.3





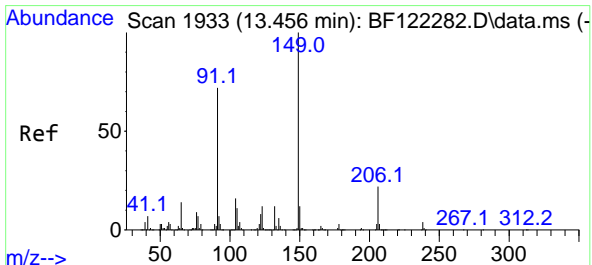
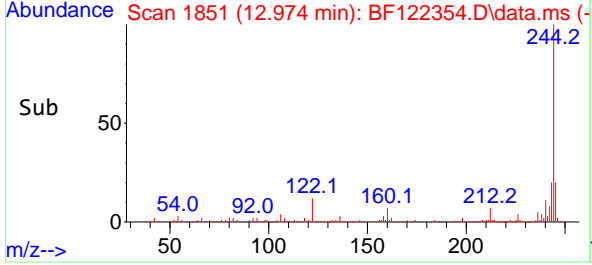
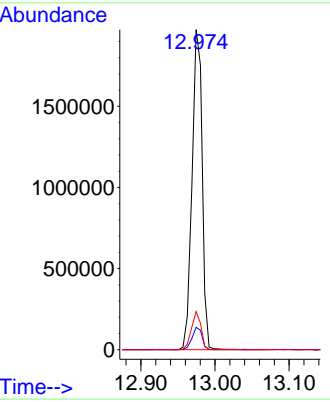
#79
 Terphenyl-d14
 Concen: 52.63 ng
 RT: 12.974 min Scan# 1851
 Delta R.T. -0.006 min
 Lab File: BF122354.D
 Acq: 17 Nov 2020 19:24

Instrument :
 BNA_F
ClientSampled :
 R-LA-33-3-WC

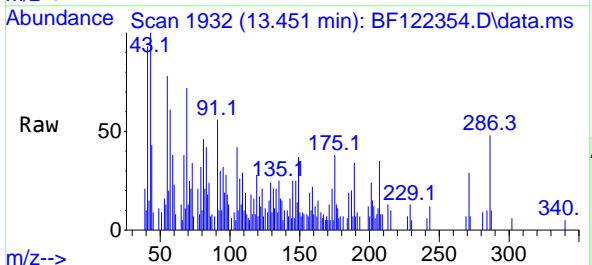


Tgt Ion:244 Resp: 1881802

Ion	Ratio	Lower	Upper
244	100		
212	7.0	5.4	8.2
122	11.9	8.1	12.1

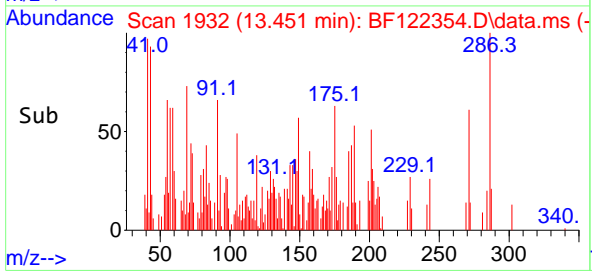
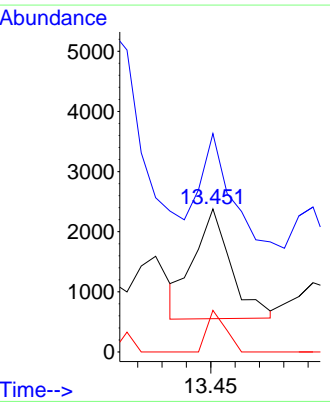


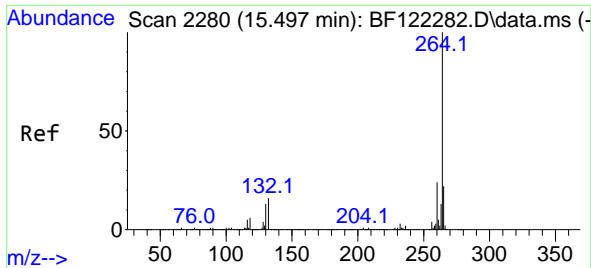
#80
 Butylbenzylphthalate
 Concen: 3.37 ng
 RT: 13.451 min Scan# 1932
 Delta R.T. -0.005 min
 Lab File: BF122354.D
 Acq: 17 Nov 2020 19:24



Tgt Ion:149 Resp: 1942

Ion	Ratio	Lower	Upper
149	100		
91	152.8	61.0	91.4#
206	29.1	16.7	25.1#





#86
 Perylene-d12
 Concen: 20.00 ng
 RT: 15.498 min Scan# 2280
 Delta R.T. 0.000 min
 Lab File: BF122354.D
 Acq: 17 Nov 2020 19:24

Instrument :
 BNA_F
 ClientSampled :
 R-LA-33-3-WC

Tgt Ion:264 Resp: 774961

Ion	Ratio	Lower	Upper
264	100		
260	24.1	18.7	28.1
265	21.6	17.3	25.9

