

Data Path : Z:\HPCHEM1\BNA F\DATA\BF112117\
 Data File : BF100774.D
 Acq On : 21 Nov 2017 12:29
 Operator : SJ/JU
 Sample : PB104316BL
 Misc :
 ALS Vial : 4 Sample Multiplier: 1

Instrument :
 BNA_F
 ClientSampleId :
 PB104316BL

Integration Parameters: rteint.p
 Integrator: RTE
 Smoothing : ON Filtering: 5
 Sampling : 1 Min Area: 3 % of largest Peak
 Start Thrs: 0.2 Max Peaks: 100
 Stop Thrs : 0 Peak Location: TOP

If leading or trailing edge < 100 prefer < Baseline drop else tangent >
 Peak separation: 5

Method : Z:\HPCHEM1\BNA F\METHODS\8270-BF110817.M
 Title : ASP BNA STANDARDS FOR 5 POINT CALIBRATION

Signal : TIC

peak #	R.T. min	first scan	max scan	last scan	PK TY	peak height	corr. area	corr. % max.	% of total
1	5.116	509	515	526	rBB	109777	151274	5.26%	0.728%
2	5.498	575	580	583	rBV	2060038	2125124	73.88%	10.231%
3	6.504	744	751	753	rBV	1890152	2118327	73.65%	10.198%
4	6.645	770	775	778	rBV	2161020	2185500	75.98%	10.522%
5	6.869	810	813	817	rBV	555024	464486	16.15%	2.236%
6	7.028	836	840	843	rBV	1938778	1749648	60.83%	8.424%
7	7.434	903	909	912	rBV	1313135	1387492	48.24%	6.680%
8	8.151	1026	1031	1035	rBV	707426	627331	21.81%	3.020%
9	9.228	1208	1214	1217	rBV	2667257	2739673	95.25%	13.190%
10	9.910	1325	1330	1334	rBV	776488	719066	25.00%	3.462%
11	10.698	1459	1464	1467	rBV	1656817	1597728	55.55%	7.692%
12	11.392	1578	1582	1586	rBV	899871	794546	27.62%	3.825%
13	12.980	1847	1852	1855	rBV	2605183	2876267	100.00%	13.848%
14	14.033	2027	2031	2034	rBV	800601	713917	24.82%	3.437%
15	15.504	2276	2281	2292	rBV	408519	520627	18.10%	2.507%

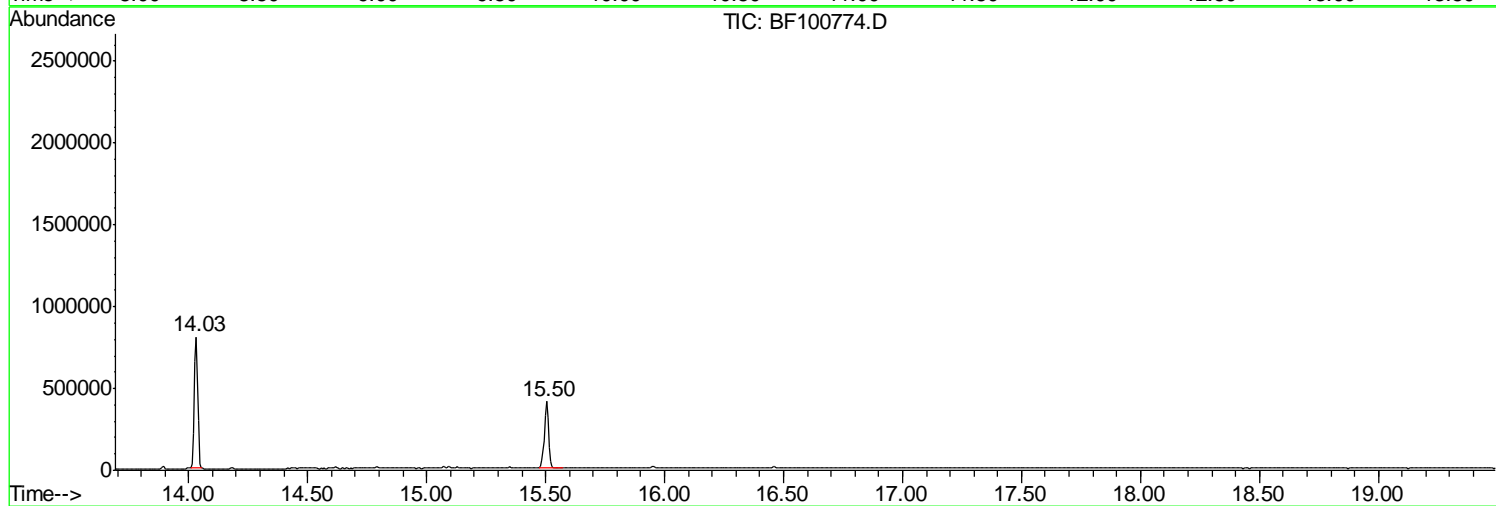
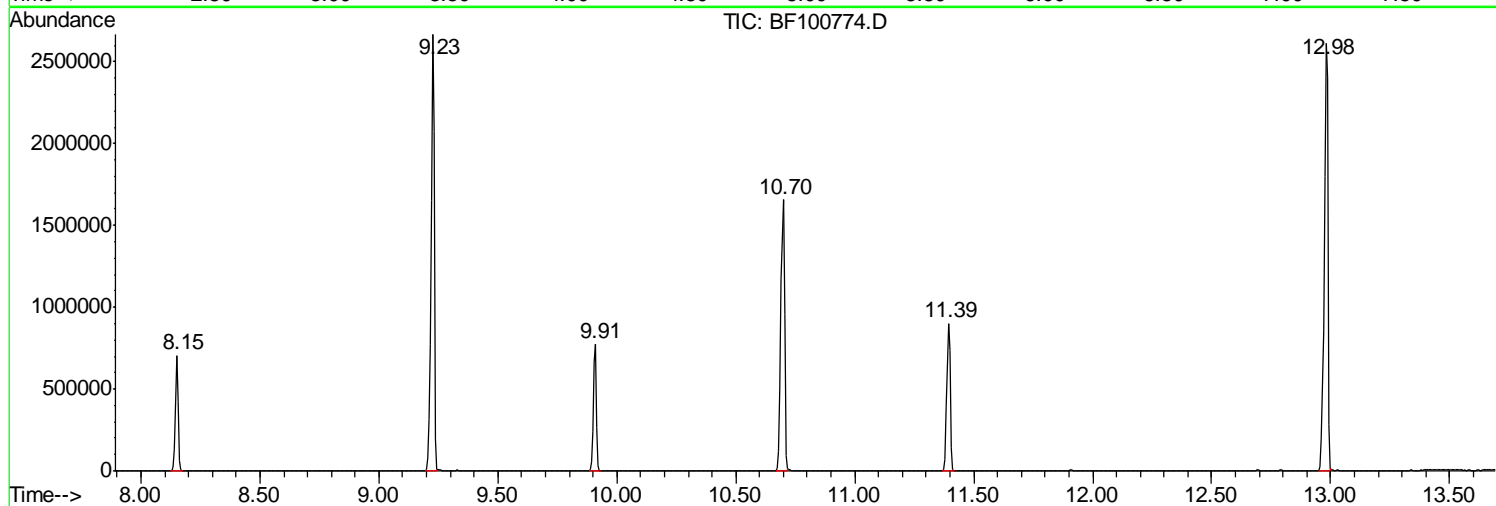
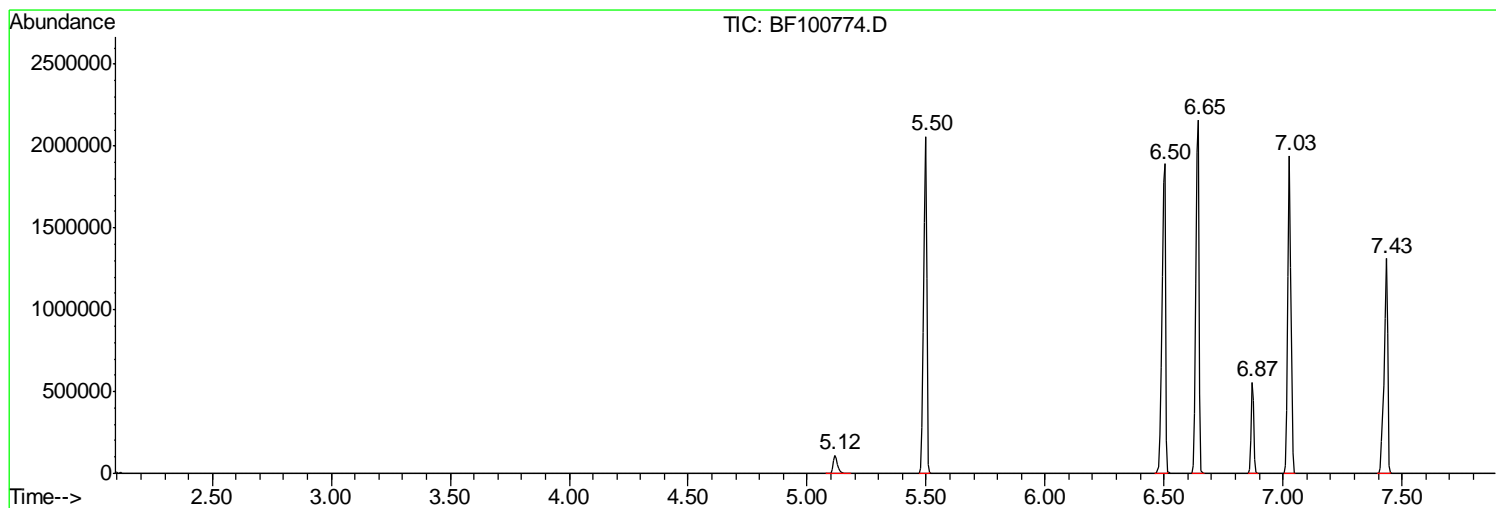
Sum of corrected areas: 20771006

Data Path : Z:\HPCHEM1\BNA F\DATA\BF112117\
Data File : BF100774.D
Acq On : 21 Nov 2017 12:29
Operator : SJ/JU
Sample : PB104316BL
Misc :
ALS Vial : 4 Sample Multiplier: 1

Instrument :
BNA_F
ClientSampleID :
PB104316BL

Quant Method : Z:\HPCHEM1\BNA F\METHODS\8270-BF110817.M
Quant Title : ASP BNA STANDARDS FOR 5 POINT CALIBRATION

TIC Library : C:\DATABASE\NIST11.L
TIC Integration Parameters: LSCINT.P



Data Path : Z:\HPCHEM1\BNA F\DATA\BF112117\
 Data File : BF100774.D
 Acq On : 21 Nov 2017 12:29
 Operator : SJ/JU
 Sample : PB104316BL
 Misc :
 ALS Vial : 4 Sample Multiplier: 1

Instrument :
 BNA_F
 ClientSampled :
 PB104316BL

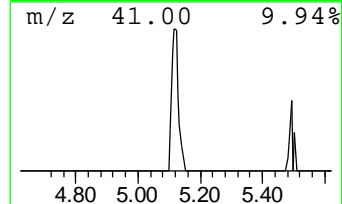
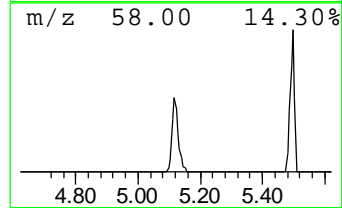
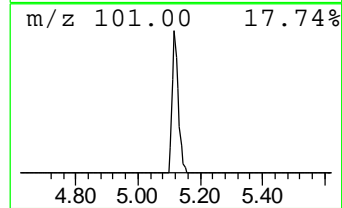
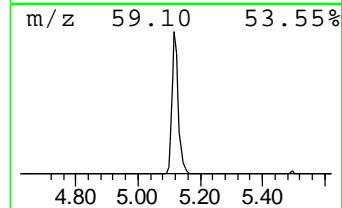
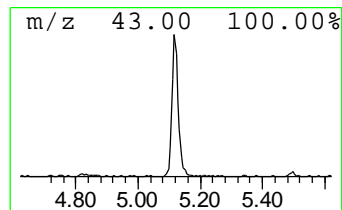
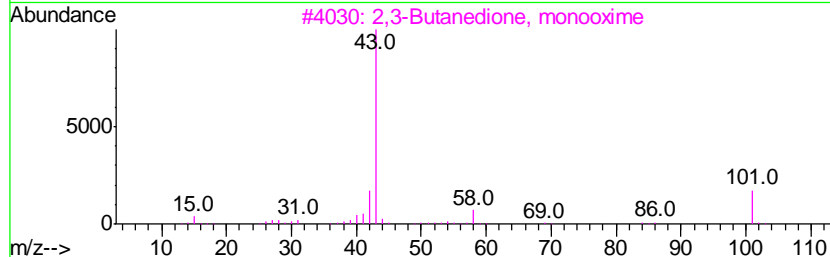
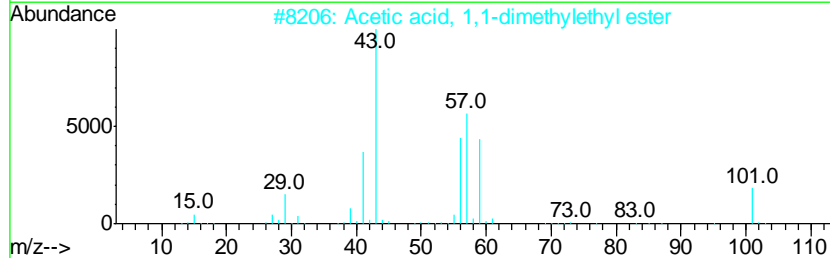
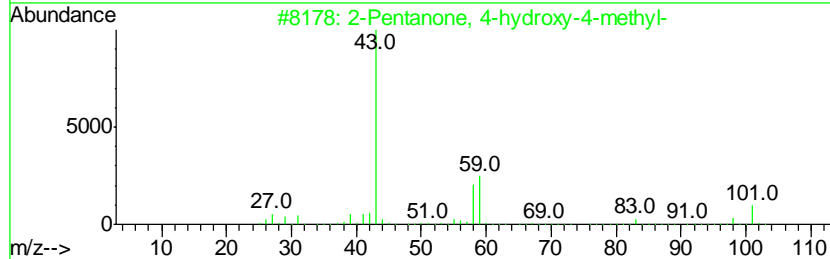
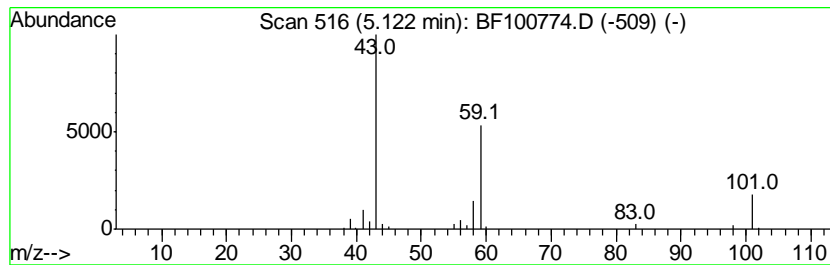
Quant Method : Z:\HPCHEM1\BNA F\METHODS\8270-BF110817.M
 Quant Title : ASP BNA STANDARDS FOR 5 POINT CALIBRATION

TIC Library : C:\DATABASE\NIST11.L
 TIC Integration Parameters: LSCINT.P

 Peak Number 1 2-Pentanone, 4-hydroxy-4-me... Concentration Rank 3

R.T.	EstConc	Area	Relative to ISTD	R.T.
5.12	6.51 ng	151274	1,4-Dichlorobenzene-d4	6.87

Hit#	of	Tentative ID	MW	MolForm	CAS#	Qual
1	5	2-Pentanone, 4-hydroxy-4-methyl-	116	C6H12O2	000123-42-2	59
2		Acetic acid, 1,1-dimethylethyl e...	116	C6H12O2	000540-88-5	39
3		2,3-Butanedione, monooxime	101	C4H7NO2	000057-71-6	35
4		Morpholine, 4-methyl-	101	C5H11NO	000109-02-4	9
5		Propanoic acid, 2-nitro-, methyl...	133	C4H7NO4	006118-50-9	9



Data Path : Z:\HPCHEM1\BNA F\DATA\BF112117\
 Data File : BF100774.D
 Acq On : 21 Nov 2017 12:29
 Operator : SJ/JU
 Sample : PB104316BL
 Misc :
 ALS Vial : 4 Sample Multiplier: 1

Instrument :
 BNA_F
 ClientSampleID :
 PB104316BL

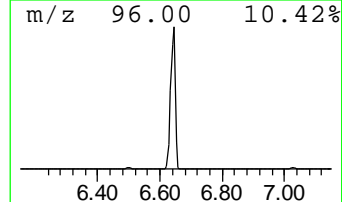
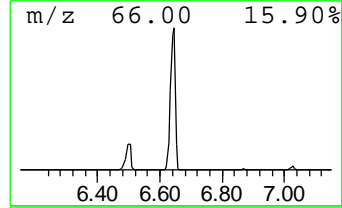
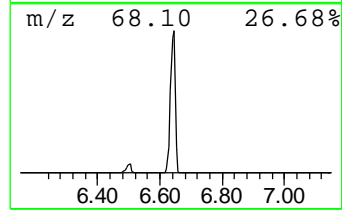
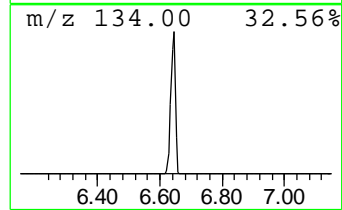
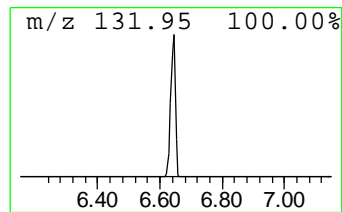
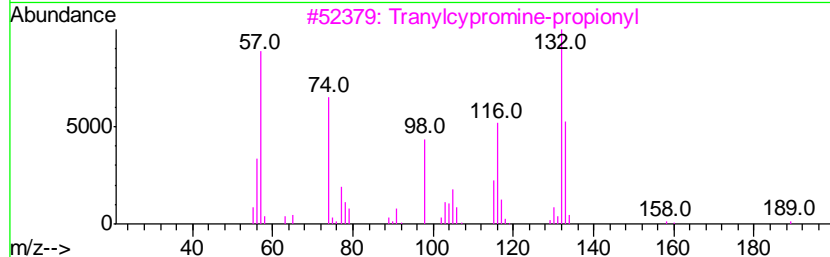
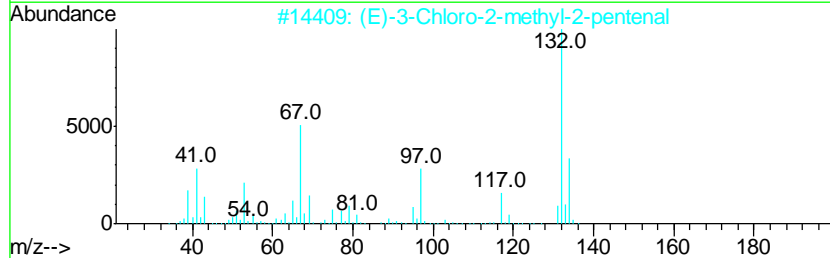
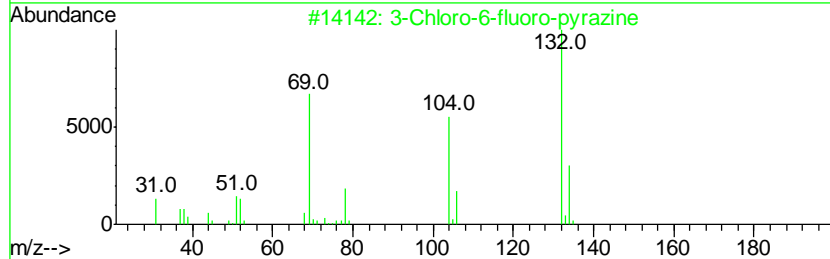
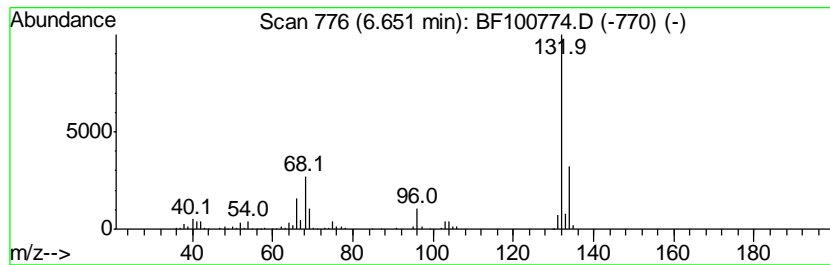
Quant Method : Z:\HPCHEM1\BNA F\METHODS\8270-BF110817.M
 Quant Title : ASP BNA STANDARDS FOR 5 POINT CALIBRATION

TIC Library : C:\DATABASE\NIST11.L
 TIC Integration Parameters: LSCINT.P

 Peak Number 2 unknown6.65 Concentration Rank 1

R.T.	EstConc	Area	Relative to ISTD	R.T.
6.65	94.10 ng	2185500	1,4-Dichlorobenzene-d4	6.87

Hit#	of	Tentative ID	MW	MolForm	CAS#	Qual
1	5	3-Chloro-6-fluoro-pyrazine	132	C4H2ClFN2	1000146-10-7	35
2		(E)-3-Chloro-2-methyl-2-pentenal	132	C6H9ClO	031357-76-3	16
3		Tranylcypromine-propionyl	189	C12H15NO	1000123-86-3	12
4		1,3,5-Trifluorobenzene	132	C6H3F3	000372-38-3	9
5		4-Chloro-2-fluoro-pyrimidine	132	C4H2ClFN2	051422-00-5	9



Data Path : Z:\HPCHEM1\BNA_F\DATA\BF112117\
Data File : BF100774.D
Acq On : 21 Nov 2017 12:29
Operator : SJ/JU
Sample : PB104316BL
Misc :
ALS Vial : 4 Sample Multiplier: 1

Instrument :
BNA_F
ClientSampleId :
PB104316BL

Quant Method : Z:\HPCHEM1\BNA_F\METHODS\8270-BF110817.M
Quant Title : ASP BNA STANDARDS FOR 5 POINT CALIBRATION

TIC Library : C:\DATABASE\NIST11.L
TIC Integration Parameters: LSCINT.P

TIC Top Hit name	RT	EstConc	Units	Response	--Internal Standard--			
					#	RT	Resp	Conc
2-Pentanone, 4-hy...	5.12	6.5	ng	151274	1	6.87	464486	20.0
unknown6.65	6.65	94.1	ng	2185500	1	6.87	464486	20.0