

Data Path : Z:\HPCHEM1\BNA F\DATA\BF112315\
 Data File : BF083199.D
 Acq On : 23 Nov 2015 12:10
 Operator : UM/IZ
 Sample : G4437-10
 Misc :
 ALS Vial : 83 Sample Multiplier: 1

Instrument :
 BNA_F
 ClientSampled :
 MW-10

Integration Parameters: rteint.p
 Integrator: RTE
 Smoothing : ON
 Sampling : 1
 Start Thrs: 0.2
 Stop Thrs : 0

Filtering: 5
 Min Area: 3 % of largest Peak
 Max Peaks: 100
 Peak Location: TOP

If leading or trailing edge < 100 prefer < Baseline drop else tangent >
 Peak separation: 5

Method : Z:\HPCHEM1\BNA F\METHODS\8270-BF112115.M
 Title : ASP BNA STANDARDS FOR 5 POINT CALIBRATION

Signal : TIC

peak #	R.T. min	first scan	max scan	last scan	PK TY	peak height	corr. area	corr. % max.	% of total
1	4.776	241	244	256	rBV	976238	1388193	19.22%	2.618%
2	5.244	282	285	287	rBV	2299818	3180942	44.05%	5.999%
3	6.296	375	377	380	rBV	1515684	2160526	29.92%	4.075%
4	6.410	385	387	390	rBV	5000987	5220096	72.29%	9.845%
5	6.639	404	407	409	rBV	1375127	1258838	17.43%	2.374%
6	6.799	418	421	423	rBV	4831344	5056362	70.02%	9.536%
7	7.210	454	457	460	rBV	3675701	4198724	58.15%	7.919%
8	7.930	517	520	522	rBV	1528264	1626091	22.52%	3.067%
9	9.005	611	614	617	rBV	5310930	7220850	100.00%	13.619%
10	9.622	666	668	670	rBV	75054	90277	1.25%	0.170%
11	9.679	670	673	675	rVV	1378077	1805722	25.01%	3.406%
12	10.125	707	712	714	rBV2	124753	151836	2.10%	0.286%
13	10.468	738	742	744	rBV	3645743	4637799	64.23%	8.747%
14	10.593	751	753	757	rBV	113012	131175	1.82%	0.247%
15	11.039	789	792	794	rBV	74636	88993	1.23%	0.168%
16	11.153	799	802	804	rBV	1584465	1797317	24.89%	3.390%
17	11.702	848	850	854	rBV	379407	389423	5.39%	0.734%
18	12.388	908	910	915	rBV3	69910	145349	2.01%	0.274%
19	12.479	916	918	922	rVV	258225	440371	6.10%	0.831%
20	12.571	924	926	929	rVB2	131844	170074	2.36%	0.321%
21	12.742	938	941	943	rBV	6154819	6961766	96.41%	13.130%
22	13.279	986	988	989	rBV	116798	109884	1.52%	0.207%
23	13.645	1018	1020	1025	rVB	147176	190024	2.63%	0.358%
24	13.771	1029	1031	1034	rBV	1600751	1684940	23.33%	3.178%
25	14.662	1107	1109	1113	rVB	71734	100302	1.39%	0.189%
26	15.040	1139	1142	1148	rVB	112609	165211	2.29%	0.312%
27	15.131	1148	1150	1153	rBV	880109	1326487	18.37%	2.502%
28	15.474	1177	1180	1185	rVB	122598	214813	2.97%	0.405%
29	15.977	1220	1224	1231	rVB2	144563	314145	4.35%	0.592%
30	16.571	1272	1276	1284	rVB	119543	320543	4.44%	0.605%
31	17.314	1336	1341	1347	rVB2	83041	260850	3.61%	0.492%
32	18.206	1414	1419	1427	rVB2	53287	213358	2.95%	0.402%

Data Path : Z:\HPCHEM1\BNA_F\DATA\BF112315\
Data File : BF083199.D
Acq On : 23 Nov 2015 12:10
Operator : UM/IZ
Sample : G4437-10
Misc :
ALS Vial : 83 Sample Multiplier: 1

Instrument :
BNA_F
ClientSampled :
MW-10

Integration Parameters: rteint.p
Integrator: RTE
Smoothing : ON Filtering: 5
Sampling : 1 Min Area: 3 % of largest Peak
Start Thrs: 0.2 Max Peaks: 100
Stop Thrs : 0 Peak Location: TOP

If leading or trailing edge < 100 prefer < Baseline drop else tangent >
Peak separation: 5

Method : Z:\HPCHEM1\BNA_F\METHODS\8270-BF112115.M
Title : ASP BNA STANDARDS FOR 5 POINT CALIBRATION

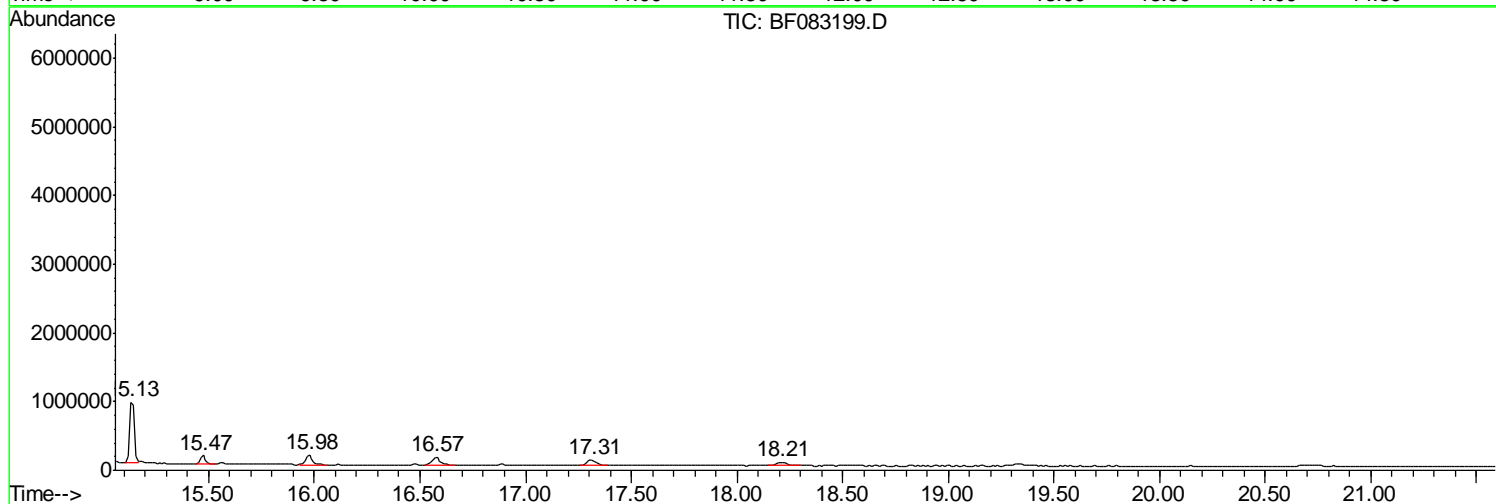
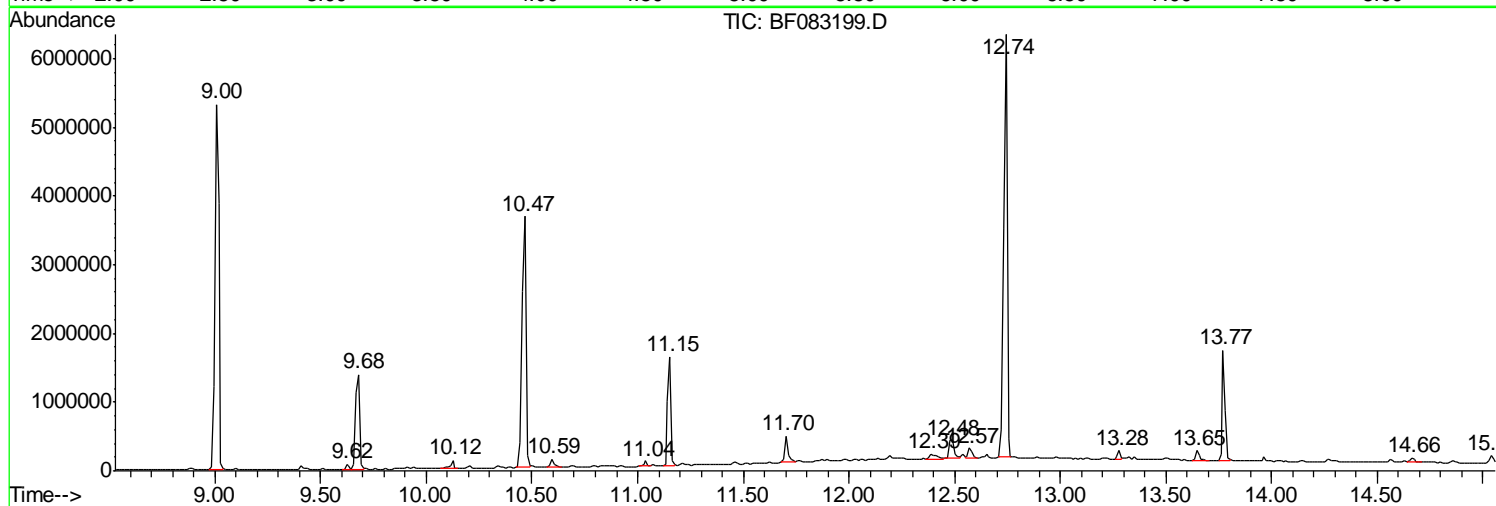
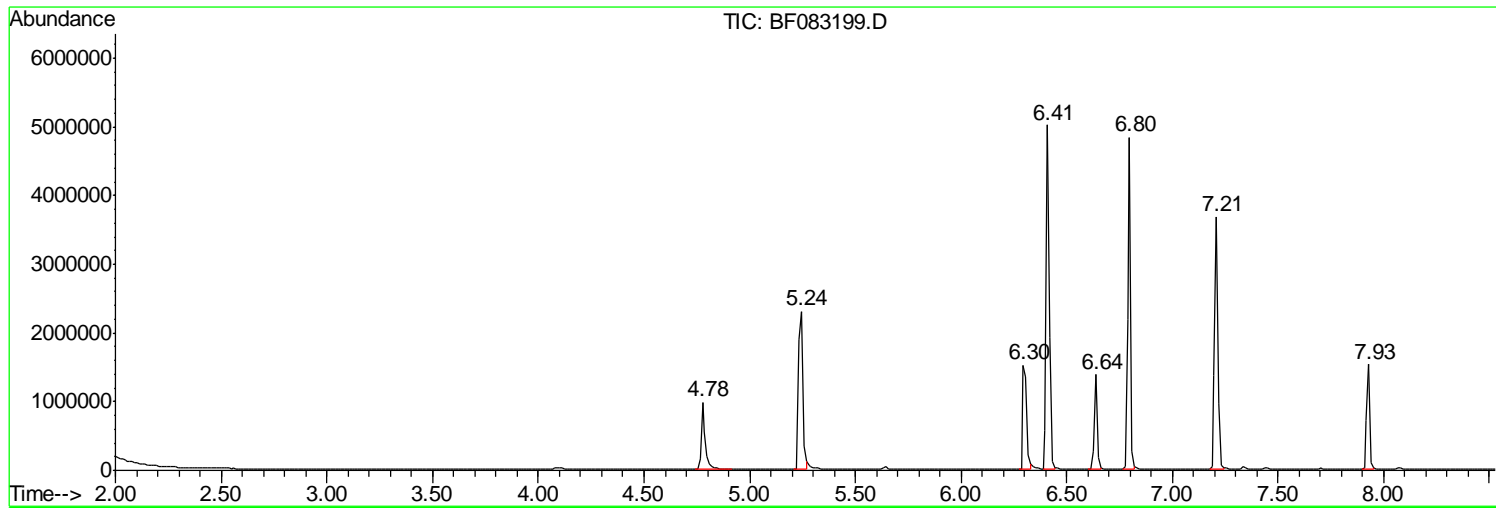
Sum of corrected areas: 53021281

Data Path : Z:\HPCHEM1\BNA F\DATA\BF112315\
Data File : BF083199.D
Acq On : 23 Nov 2015 12:10
Operator : UM/IZ
Sample : G4437-10
Misc :
ALS Vial : 83 Sample Multiplier: 1

Instrument :
BNA_F
ClientSampled :
MW-10

Quant Method : Z:\HPCHEM1\BNA F\METHODS\8270-BF112115.M
Quant Title : ASP BNA STANDARDS FOR 5 POINT CALIBRATION

TIC Library : C:\DATABASE\NIST02.L
TIC Integration Parameters: LSCINT.P



Data Path : Z:\HPCHEM1\BNA F\DATA\BF112315\
 Data File : BF083199.D
 Acq On : 23 Nov 2015 12:10
 Operator : UM/IZ
 Sample : G4437-10
 Misc :
 ALS Vial : 83 Sample Multiplier: 1

Instrument :
 BNA_F
 ClientSampled :
 MW-10

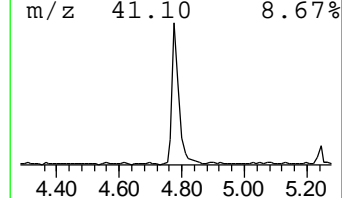
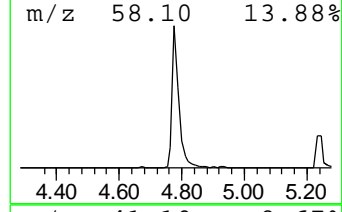
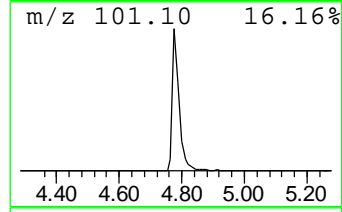
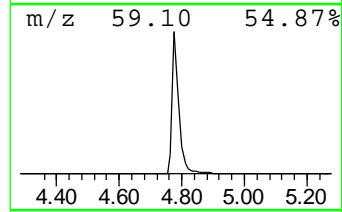
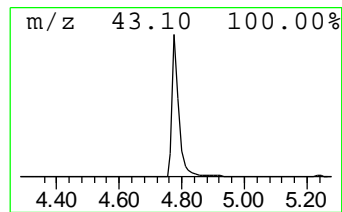
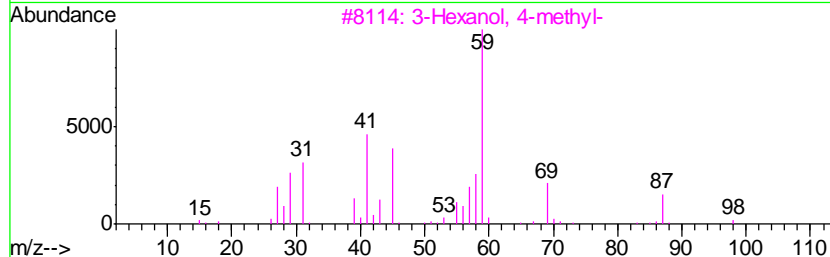
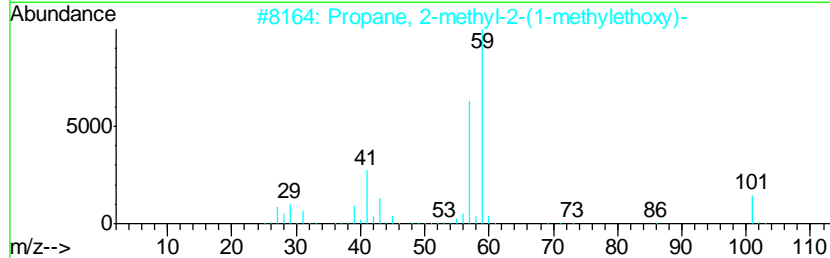
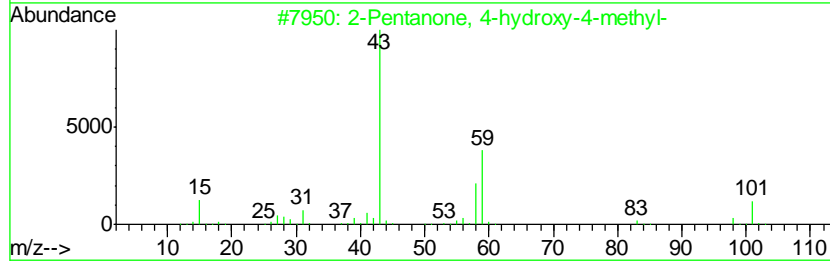
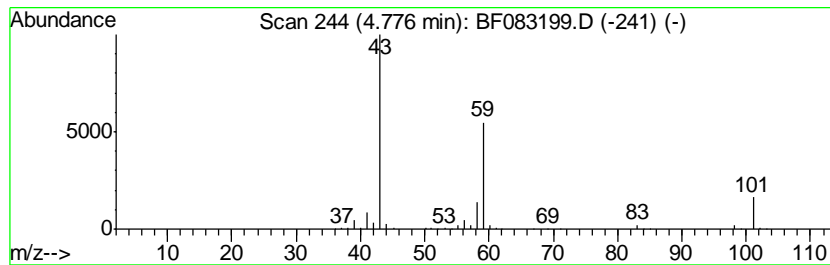
Quant Method : Z:\HPCHEM1\BNA F\METHODS\8270-BF112115.M
 Quant Title : ASP BNA STANDARDS FOR 5 POINT CALIBRATION

TIC Library : C:\DATABASE\NIST02.L
 TIC Integration Parameters: LSCINT.P

 Peak Number 1 2-Pentanone, 4-hydroxy-4-me... Concentration Rank 3

R.T.	EstConc	Area	Relative to ISTD	R.T.
4.78	22.06 ng	1388190	1,4-Dichlorobenzene-d4	6.64

Hit#	of	Tentative ID	MW	MolForm	CAS#	Qual
1	5	2-Pentanone, 4-hydroxy-4-methyl-	116	C6H12O2	000123-42-2	64
2		Propane, 2-methyl-2-(1-methyleth...	116	C7H16O	017348-59-3	42
3		3-Hexanol, 4-methyl-	116	C7H16O	000615-29-2	33
4		3-Hexanol	102	C6H14O	000623-37-0	33
5		2-Hexanol, 2-methyl-	116	C7H16O	000625-23-0	28



Data Path : Z:\HPCHEM1\BNA F\DATA\BF112315\
 Data File : BF083199.D
 Acq On : 23 Nov 2015 12:10
 Operator : UM/IZ
 Sample : G4437-10
 Misc :
 ALS Vial : 83 Sample Multiplier: 1

Instrument :
 BNA_F
 ClientSampled :
 MW-10

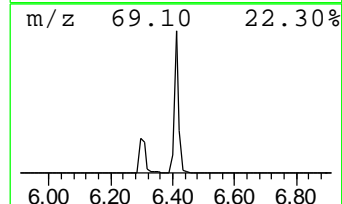
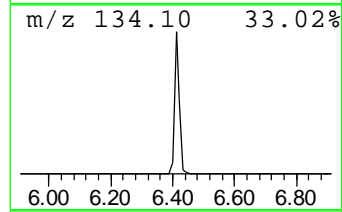
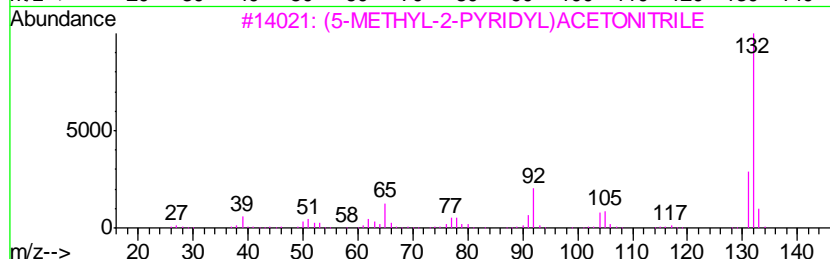
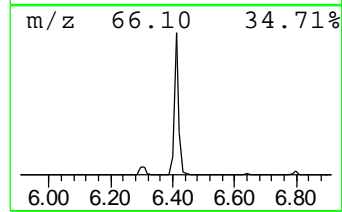
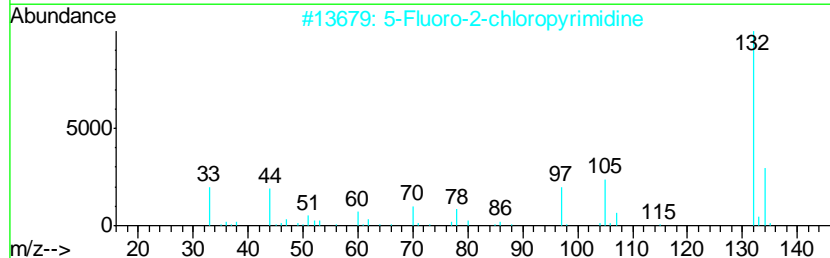
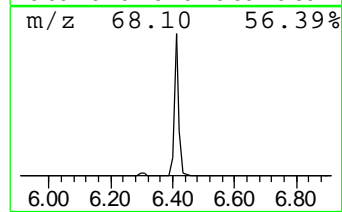
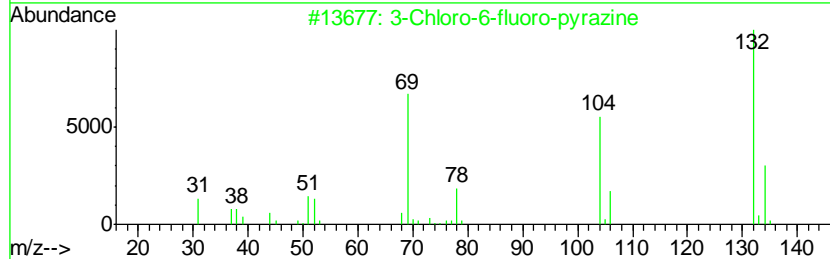
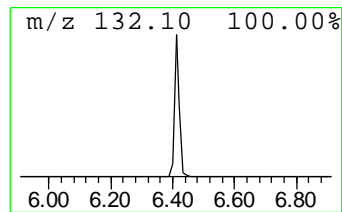
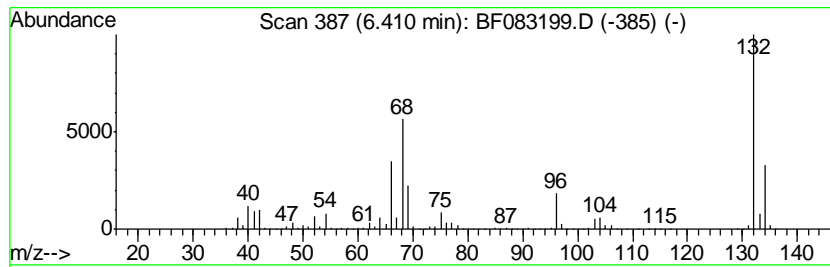
Quant Method : Z:\HPCHEM1\BNA F\METHODS\8270-BF112115.M
 Quant Title : ASP BNA STANDARDS FOR 5 POINT CALIBRATION

TIC Library : C:\DATABASE\NIST02.L
 TIC Integration Parameters: LSCINT.P

 Peak Number 2 unknown6.41 Concentration Rank 1

R.T.	EstConc	Area	Relative to ISTD	R.T.
6.41	82.94 ng	5220100	1,4-Dichlorobenzene-d4	6.64

Hit#	of	Tentative ID	MW	MolForm	CAS#	Qual
1	5	3-Chloro-6-fluoro-pyrazine	132	C4H2ClFN2	1000146-10-7	27
2		5-Fluoro-2-chloropyrimidine	132	C4H2ClFN2	062802-42-0	12
3		(5-METHYL-2-PYRIDYL)ACETONITRILE	132	C8H8N2	1000241-93-9	10
4		5-Aminoindole	132	C8H8N2	005192-03-0	10
5		2-Cyclohexen-1-one	96	C6H8O	000930-68-7	10



Data Path : Z:\HPCHEM1\BNA F\DATA\BF112315\
 Data File : BF083199.D
 Acq On : 23 Nov 2015 12:10
 Operator : UM/IZ
 Sample : G4437-10
 Misc :
 ALS Vial : 83 Sample Multiplier: 1

Instrument :
 BNA_F
 ClientSampleID :
 MW-10

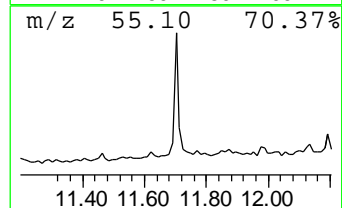
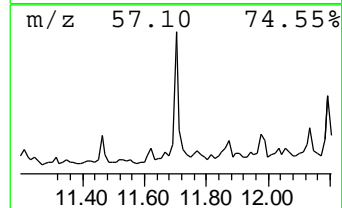
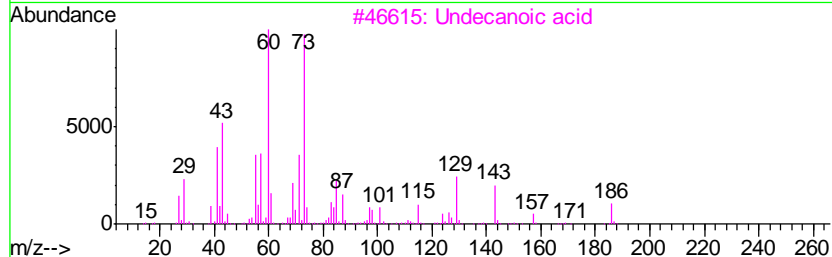
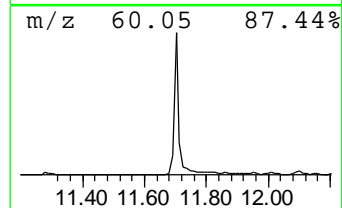
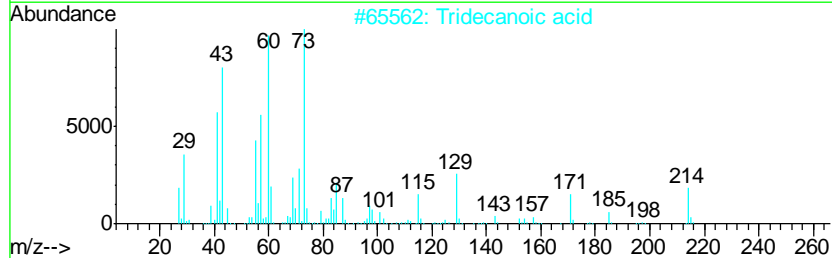
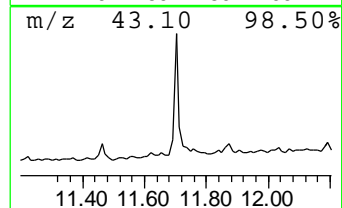
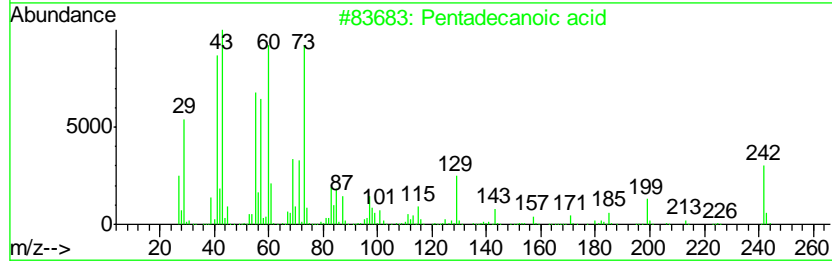
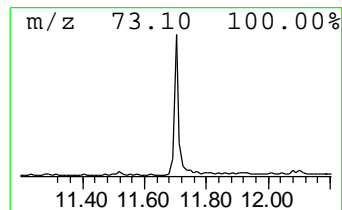
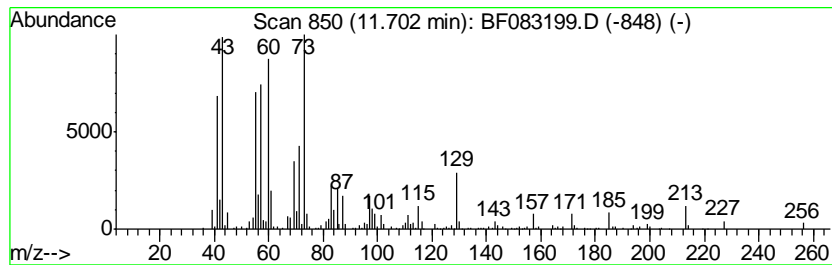
Quant Method : Z:\HPCHEM1\BNA F\METHODS\8270-BF112115.M
 Quant Title : ASP BNA STANDARDS FOR 5 POINT CALIBRATION

TIC Library : C:\DATABASE\NIST02.L
 TIC Integration Parameters: LSCINT.P

 Peak Number 4 Pentadecanoic acid Concentration Rank 7

R.T.	EstConc	Area	Relative to ISTD	R.T.
11.70	4.33 ng	389423	Phenanthrene-d10	11.15

Hit#	of	Tentative ID	MW	MolForm	CAS#	Qual
1	5	Pentadecanoic acid	242	C15H30O2	001002-84-2	90
2		Tridecanoic acid	214	C13H26O2	000638-53-9	87
3		Undecanoic acid	186	C11H22O2	000112-37-8	86
4		Tetradecanoic acid	228	C14H28O2	000544-63-8	80
5		n-Hexadecanoic acid	256	C16H32O2	000057-10-3	45



Data Path : Z:\HPCHEM1\BNA F\DATA\BF112315\
 Data File : BF083199.D
 Acq On : 23 Nov 2015 12:10
 Operator : UM/IZ
 Sample : G4437-10
 Misc :
 ALS Vial : 83 Sample Multiplier: 1

Instrument :
 BNA_F
 ClientSampleID :
 MW-10

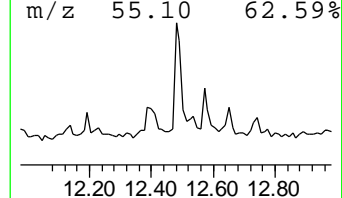
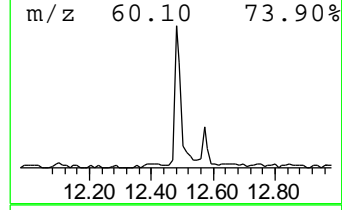
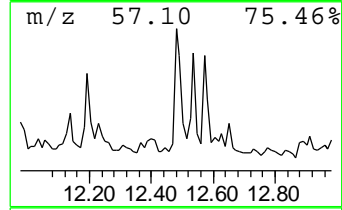
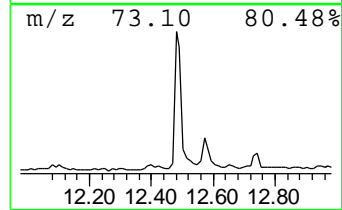
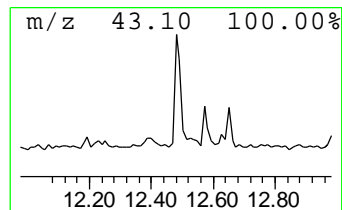
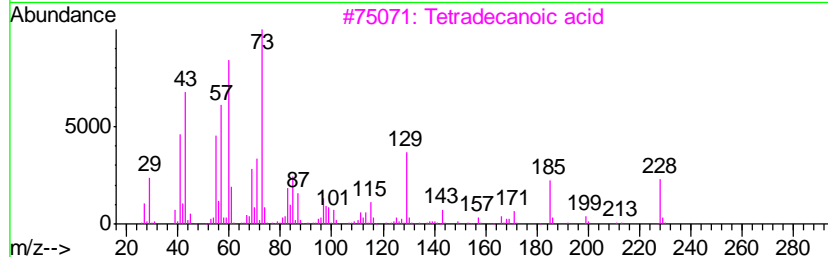
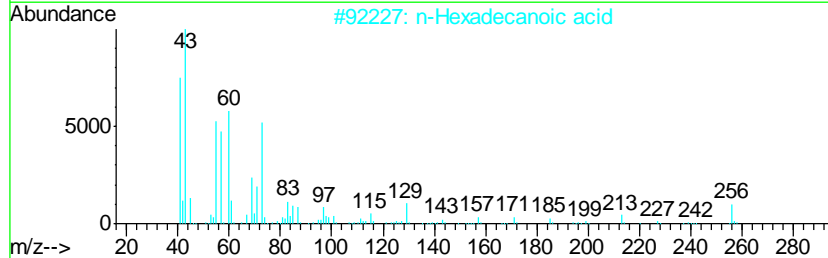
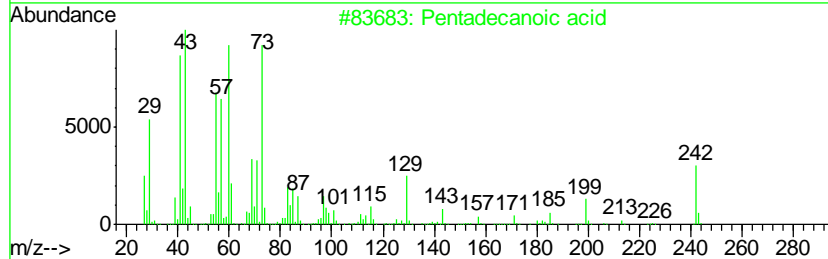
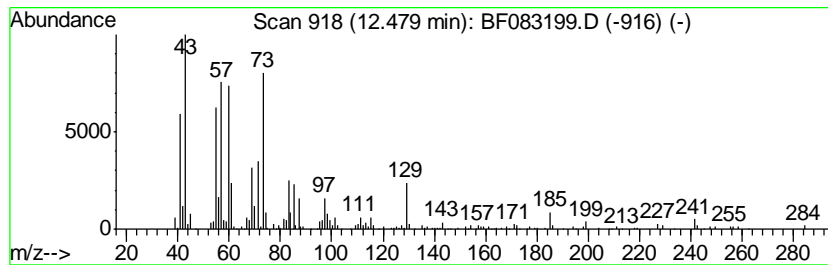
Quant Method : Z:\HPCHEM1\BNA F\METHODS\8270-BF112115.M
 Quant Title : ASP BNA STANDARDS FOR 5 POINT CALIBRATION

TIC Library : C:\DATABASE\NIST02.L
 TIC Integration Parameters: LSCINT.P

 Peak Number 5 n-Hexadecanoic acid Concentration Rank 4

R.T.	EstConc	Area	Relative to ISTD	R.T.
12.48	5.23 ng	440371	Chrysene-d12	13.77

Hit#	of	Tentative ID	MW	MolForm	CAS#	Qual
1	5	Pentadecanoic acid	242	C15H30O2	001002-84-2	81
2		n-Hexadecanoic acid	256	C16H32O2	000057-10-3	78
3		Tetradecanoic acid	228	C14H28O2	000544-63-8	59
4		Lactose	342	C12H22O11	000063-42-3	50
5		Nonane	128	C9H20	000111-84-2	25



Data Path : Z:\HPCHEM1\BNA F\DATA\BF112315\
 Data File : BF083199.D
 Acq On : 23 Nov 2015 12:10
 Operator : UM/IZ
 Sample : G4437-10
 Misc :
 ALS Vial : 83 Sample Multiplier: 1

Instrument :
 BNA_F
 ClientSampled :
 MW-10

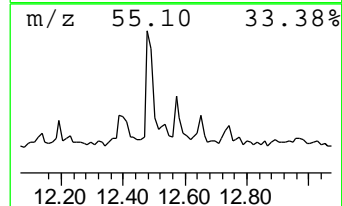
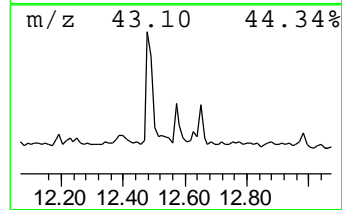
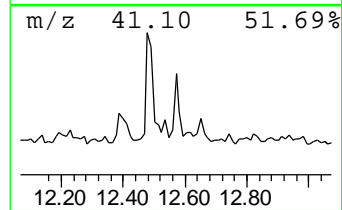
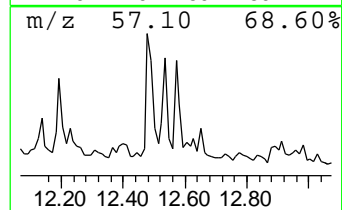
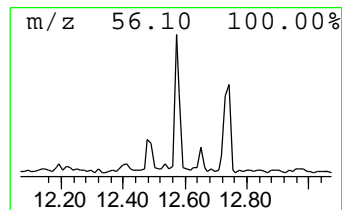
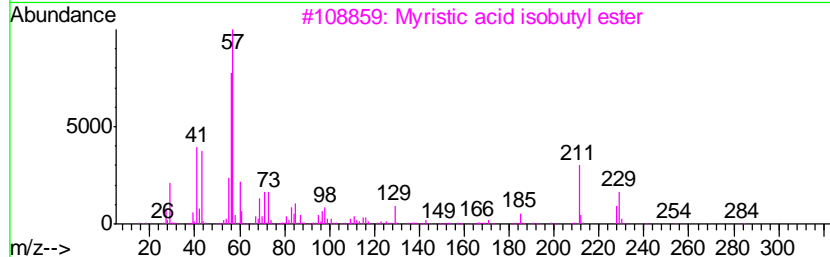
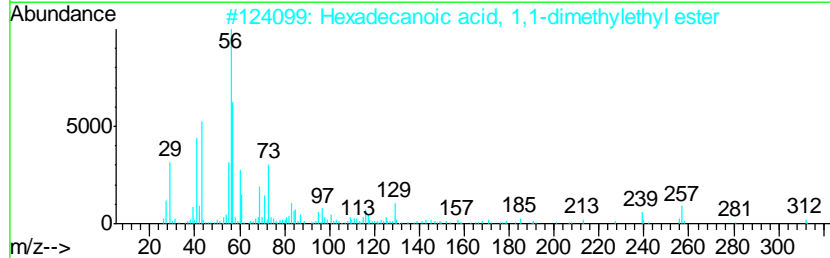
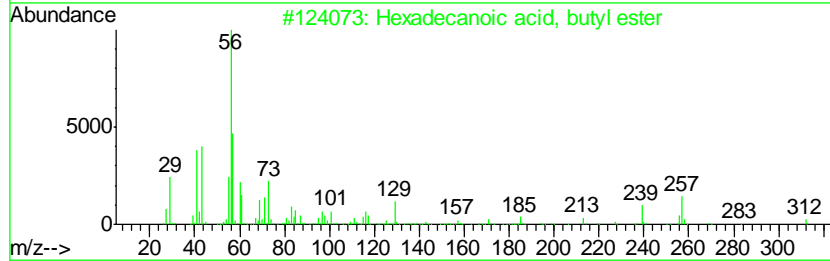
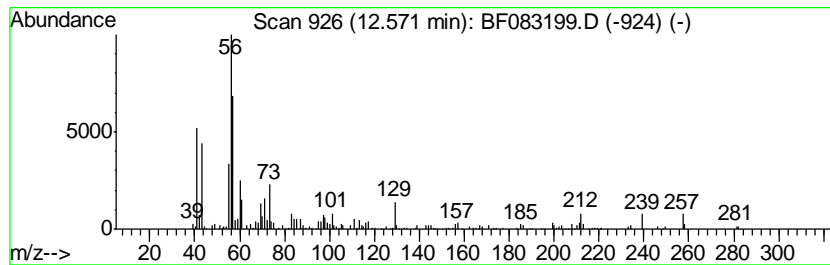
Quant Method : Z:\HPCHEM1\BNA F\METHODS\8270-BF112115.M
 Quant Title : ASP BNA STANDARDS FOR 5 POINT CALIBRATION

TIC Library : C:\DATABASE\NIST02.L
 TIC Integration Parameters: LSCINT.P

 Peak Number 6 Hexadecanoic acid, butyl ester Concentration Rank 13

R.T.	EstConc	Area	Relative to ISTD	R.T.
12.57	2.02 ng	170074	Chrysene-d12	13.77

Hit#	of	Tentative ID	MW	MolForm	CAS#	Qual
1	5	Hexadecanoic acid, butyl ester	312	C20H40O2	000111-06-8	86
2		Hexadecanoic acid, 1,1-dimethyle...	312	C20H40O2	031158-91-5	78
3		Myristic acid isobutyl ester	284	C18H36O2	025263-97-2	64
4		Oxan-4-one, 2-trifluoromethyl-2-...	212	C8H11F3O3	212615-80-0	46
5		Undecane, 5-methylene-	168	C12H24	005698-48-6	43



Data Path : Z:\HPCHEM1\BNA F\DATA\BF112315\
 Data File : BF083199.D
 Acq On : 23 Nov 2015 12:10
 Operator : UM/IZ
 Sample : G4437-10
 Misc :
 ALS Vial : 83 Sample Multiplier: 1

Instrument :
 BNA_F
 ClientSampled :
 MW-10

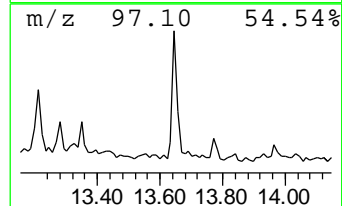
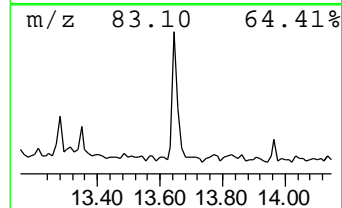
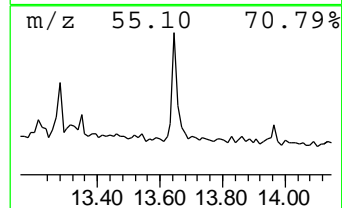
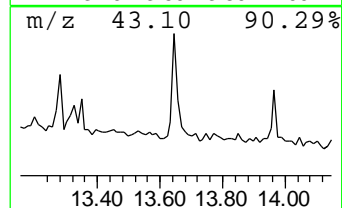
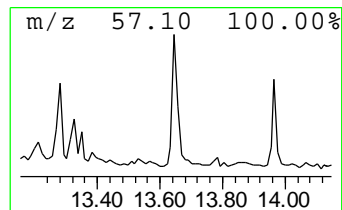
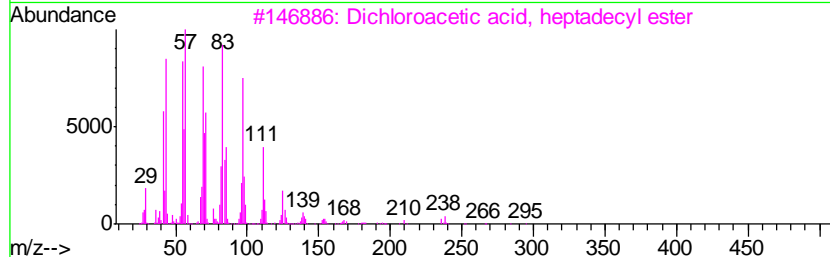
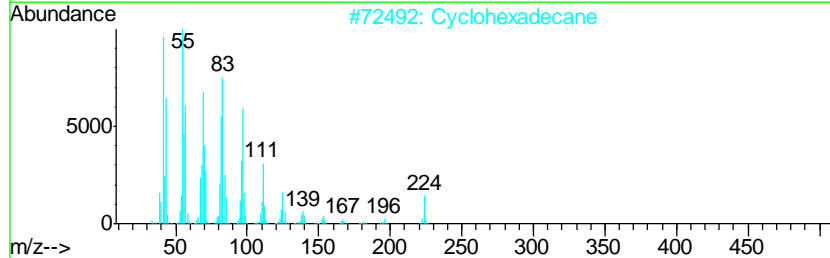
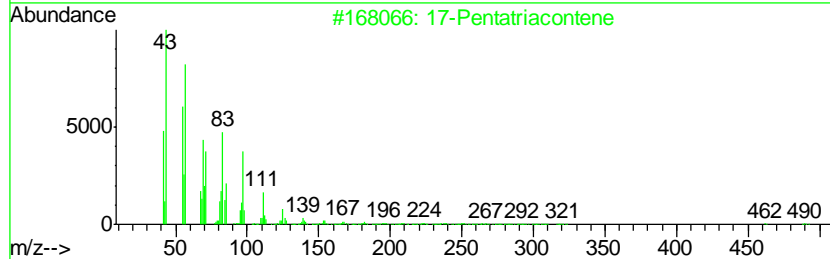
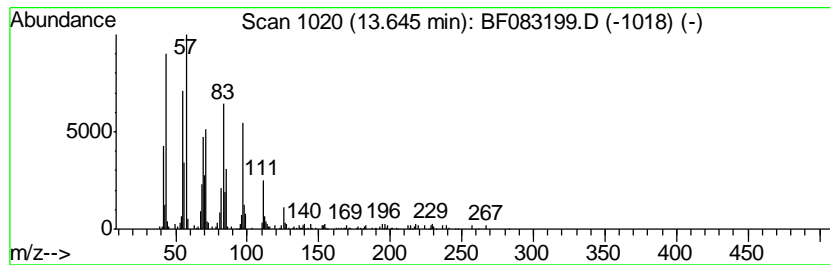
Quant Method : Z:\HPCHEM1\BNA F\METHODS\8270-BF112115.M
 Quant Title : ASP BNA STANDARDS FOR 5 POINT CALIBRATION

TIC Library : C:\DATABASE\NIST02.L
 TIC Integration Parameters: LSCINT.P

 Peak Number 7 17-Pentatriacontene Concentration Rank 12

R.T.	EstConc	Area	Relative to ISTD	R.T.
13.65	2.26 ng	190024	Chrysene-d12	13.77

Hit#	of	Tentative ID	MW	MolForm	CAS#	Qual
1	5	17-Pentatriacontene	491	C35H70	006971-40-0	91
2		Cyclohexadecane	224	C16H32	000295-65-8	89
3		Dichloroacetic acid, heptadecyl ...	366	C19H36Cl2O2	1000282-98-2	87
4		Dodecane, 6-cyclohexyl-	252	C18H36	013151-86-5	72
5		Pentafluoropropionic acid, octad...	416	C21H37F5O2	1000280-07-7	68



Data Path : Z:\HPCHEM1\BNA F\DATA\BF112315\
 Data File : BF083199.D
 Acq On : 23 Nov 2015 12:10
 Operator : UM/IZ
 Sample : G4437-10
 Misc :
 ALS Vial : 83 Sample Multiplier: 1

Instrument :
 BNA_F
 ClientSampleID :
 MW-10

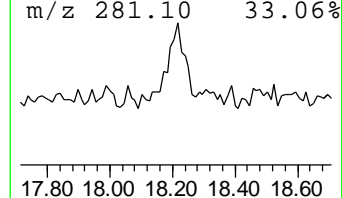
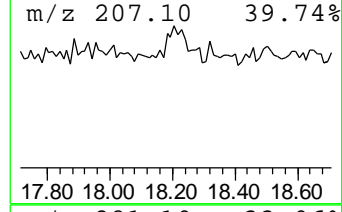
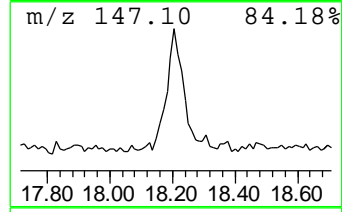
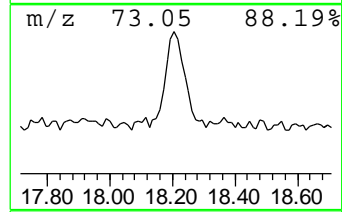
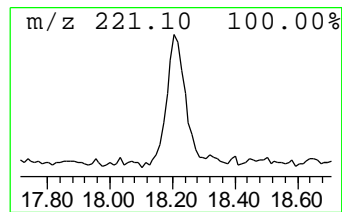
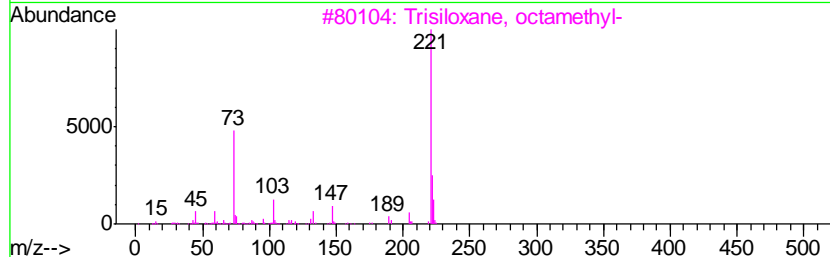
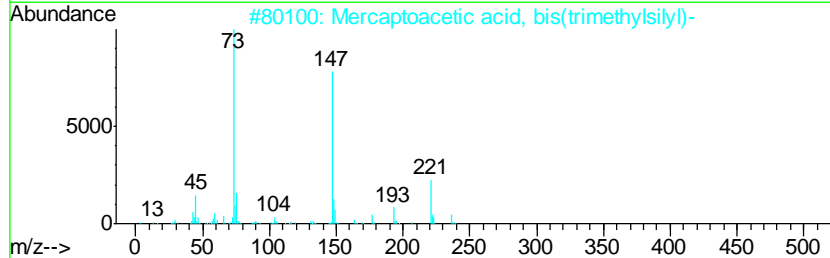
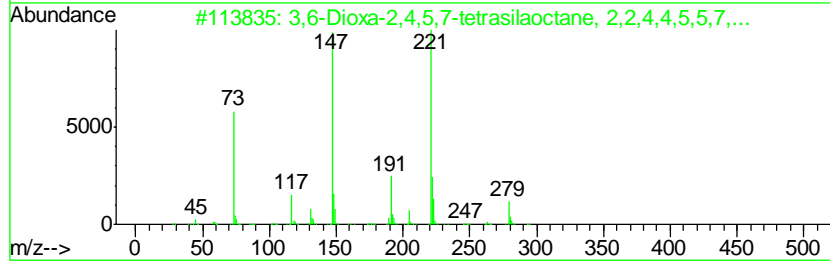
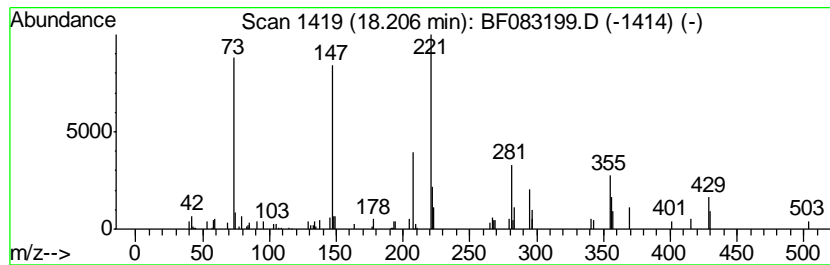
Quant Method : Z:\HPCHEM1\BNA F\METHODS\8270-BF112115.M
 Quant Title : ASP BNA STANDARDS FOR 5 POINT CALIBRATION

TIC Library : C:\DATABASE\NIST02.L
 TIC Integration Parameters: LSCINT.P

 Peak Number 13 unknown18.21 Concentration Rank 10

R.T.	EstConc	Area	Relative to ISTD	R.T.
18.21	3.22 ng	213358	Perylene-d12	15.14

Hit#	of	Tentative ID	MW	MolForm	CAS#	Qual
1	5	3,6-Dioxa-2,4,5,7-tetrasilaoctan...	294	C10H30O2Si4	004342-25-0	38
2		Mercaptoacetic acid, bis(trimeth...	236	C8H20O2SSi2	006398-62-5	38
3		Trisiloxane, octamethyl-	236	C8H24O2Si3	000107-51-7	27
4		2,6-Dimethyl-3,4-bis(trimethylsi...	311	C15H29NO2Si2	1000079-52-1	17
5		2-Amino-4-(4-nitrophenyl)thiazole	221	C9H7N3O2S	002104-09-8	14



Data Path : Z:\HPCHEM1\BNA_F\DATA\BF112315\
Data File : BF083199.D
Acq On : 23 Nov 2015 12:10
Operator : UM/IZ
Sample : G4437-10
Misc :
ALS Vial : 83 Sample Multiplier: 1

Instrument :
BNA_F
ClientSampleId :
MW-10

Quant Method : Z:\HPCHEM1\BNA_F\METHODS\8270-BF112115.M
Quant Title : ASP BNA STANDARDS FOR 5 POINT CALIBRATION

TIC Library : C:\DATABASE\NIST02.L
TIC Integration Parameters: LSCINT.P

TIC Top Hit name	RT	EstConc	Units	Response	--Internal Standard--			
					#	RT	Resp	Conc
2-Pentanone, 4-hy...	4.78	22.1 ng		1388190	1	6.64	1258840	20.0
unknown6.41	6.41	82.9 ng		5220100	1	6.64	1258840	20.0
Pentadecanoic acid	11.70	4.3 ng		389423	4	11.15	1797320	20.0
n-Hexadecanoic acid	12.48	5.2 ng		440371	5	13.77	1684940	20.0
Hexadecanoic acid...	12.57	2.0 ng		170074	5	13.77	1684940	20.0
17-Pentatriacontene	13.65	2.3 ng		190024	5	13.77	1684940	20.0
unknown18.21	18.21	3.2 ng		213358	6	15.14	1326490	20.0