

Data Path : Z:\HPCHEM1\BNA F\DATA\BF112415\
 Data File : BF083236.D
 Acq On : 24 Nov 2015 14:51
 Operator : UM/IZ
 Sample : G4503-04
 Misc :
 ALS Vial : 6 Sample Multiplier: 1

Instrument :
 BNA_F
 ClientSampleId :

Quant Time: Nov 24 15:38:56 2015
 Quant Method : Z:\HPCHEM1\BNA F\METHODS\8270-BF112115.M
 Quant Title : ASP BNA STANDARDS FOR 5 POINT CALIBRATION
 QLast Update : Tue Nov 24 15:18:40 2015
 Response via : Initial Calibration

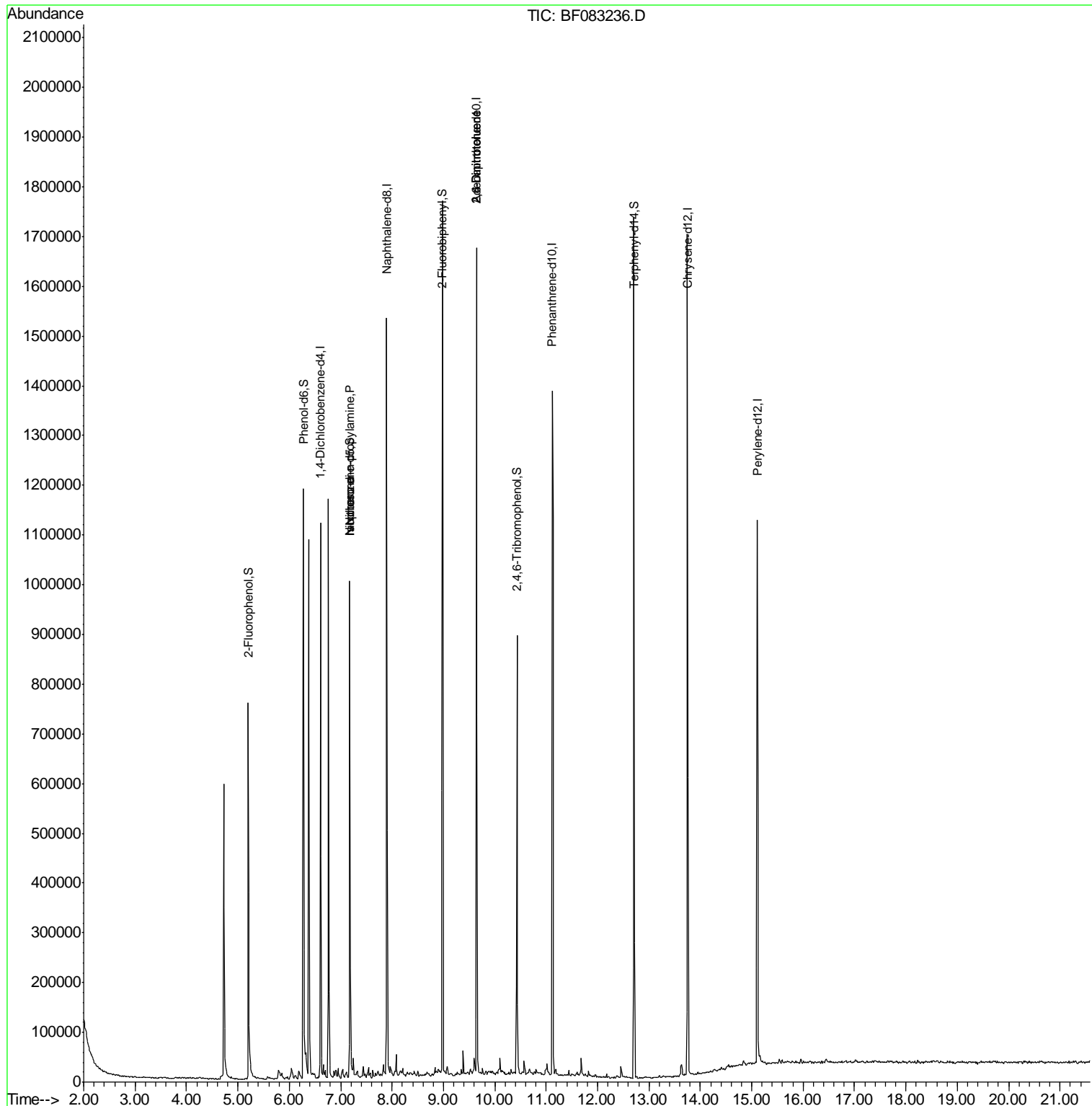
Internal Standards	R.T.	QIon	Response	Conc	Units	Dev(Min)
1) 1,4-Dichlorobenzene-d4	6.60	152	176347	20.00	ng	-0.01
21) Naphthalene-d8	7.90	136	688956	20.00	ng	-0.01
38) Acenaphthene-d10	9.64	164	363199	20.00	ng	-0.01
63) Phenanthrene-d10	11.12	188	700829	20.00	ng	-0.01
75) Chrysene-d12	13.75	240	622231	20.00	ng	-0.01
86) Perylene-d12	15.11	264	478342	20.00	ng	-0.01
System Monitoring Compounds						
5) 2-Fluorophenol	5.20	112	269763	23.13	ng	0.00
7) Phenol-d6	6.27	99	435522	28.86	ng	-0.01
23) Nitrobenzene-d5	7.18	82	324867	21.55	ng	-0.01
41) 2,4,6-Tribromophenol	10.43	330	92811	24.98	ng	-0.01
44) 2-Fluorobiphenyl	8.98	172	575011	22.08	ng	-0.01
78) Terphenyl-d14	12.71	244	511154	19.34	ng	-0.01
Target Compounds						
9) Benzaldehyde	6.27	77	446	Below Cal	#	4
19) n-Nitroso-di-n-propylamine	7.18	70	44566	4.24	ng	# 75
25) Isophorone	7.18	82	307120	10.76	ng	# 70
50) 2,6-Dinitrotoluene	9.64	165	45625	7.27	ng	# 14
56) 2,4-Dinitrotoluene	9.64	165	45617	5.74	ng	# 11

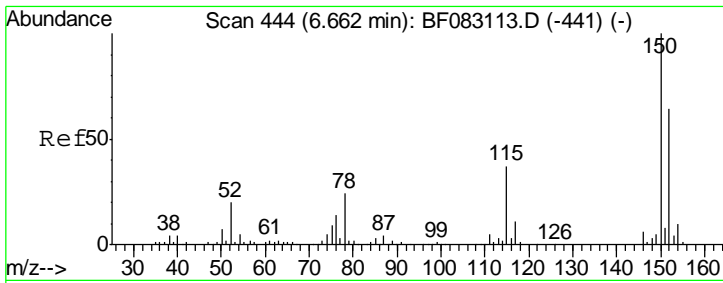
(#) = qualifier out of range (m) = manual integration (+) = signals summed

Data Path : Z:\HPCHEM1\BNA F\DATA\BF112415\
 Data File : BF083236.D
 Acq On : 24 Nov 2015 14:51
 Operator : UM/IZ
 Sample : G4503-04
 Misc :
 ALS Vial : 6 Sample Multiplier: 1

Instrument :
 BNA_F
 ClientSampleId :

Quant Time: Nov 24 15:38:56 2015
 Quant Method : Z:\HPCHEM1\BNA F\METHODS\8270-BF112115.M
 Quant Title : ASP BNA STANDARDS FOR 5 POINT CALIBRATION
 QLast Update : Tue Nov 24 15:18:40 2015
 Response via : Initial Calibration

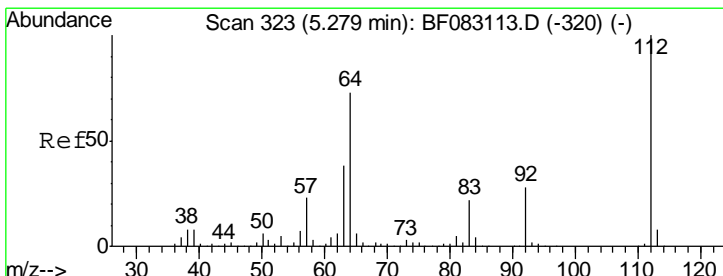
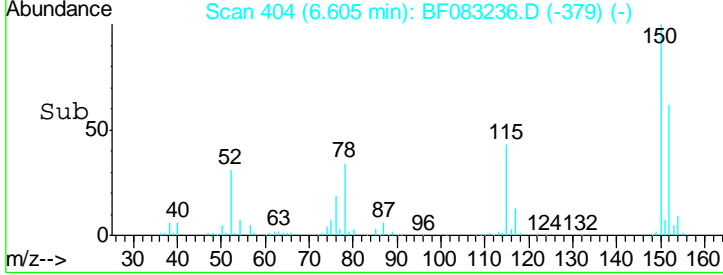
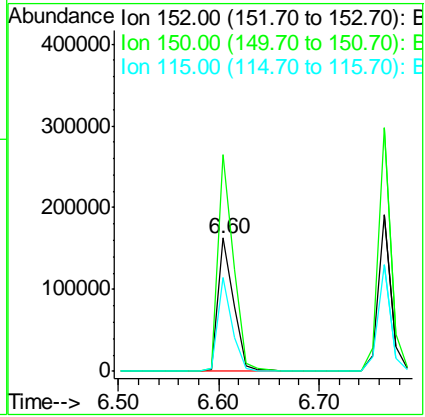
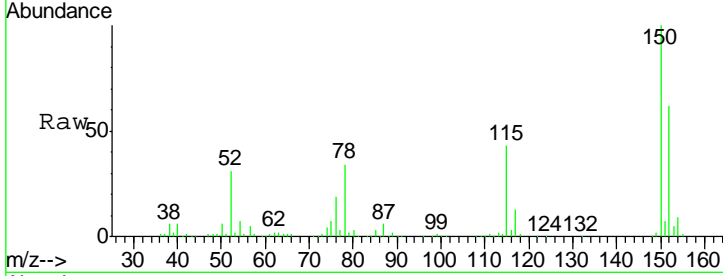




#1
 1,4-Dichlorobenzene-d4
 Concen: 20.00 ng
 RT: 6.60 min Scan# 404
 Delta R.T. -0.01 min
 Lab File: BF083236.D
 Acq: 24 Nov 2015 14:51

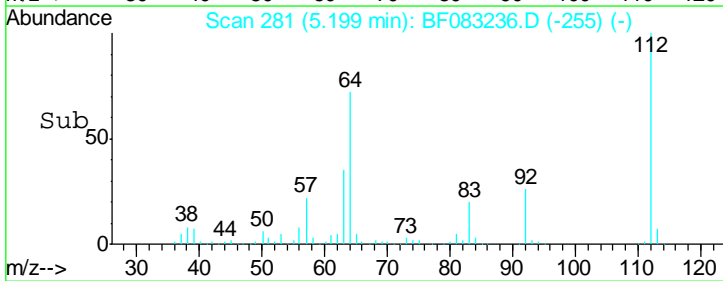
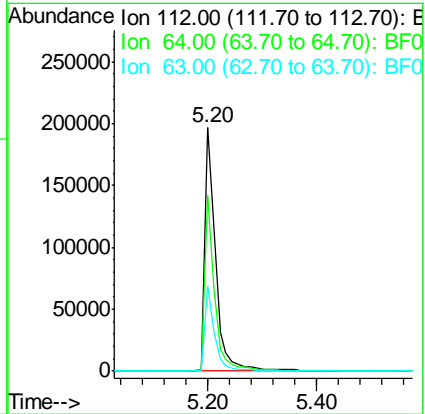
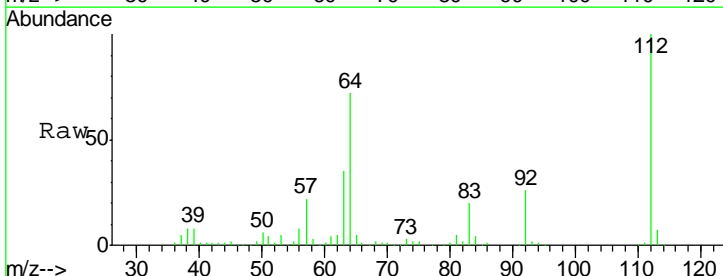
Instrument :
 BNA_F
 ClientSampled :

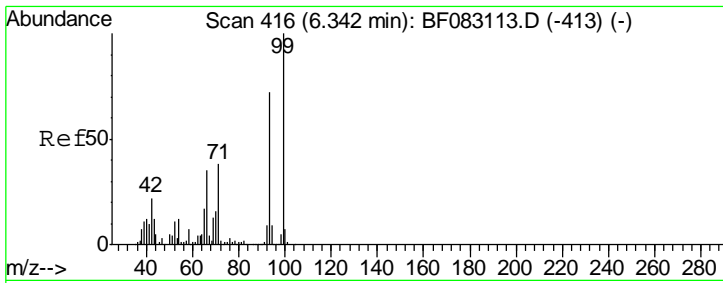
Tgt Ion	Resp	Lower	Upper
152	176347		
150	162.4	125.8	188.8
115	70.3	46.9	70.3



#5
 2-Fluorophenol
 Concen: 23.13 ng
 RT: 5.20 min Scan# 281
 Delta R.T. -0.00 min
 Lab File: BF083236.D
 Acq: 24 Nov 2015 14:51

Tgt Ion	Resp	Lower	Upper
112	269763		
64	71.9	58.4	87.6
63	35.1	30.0	45.0

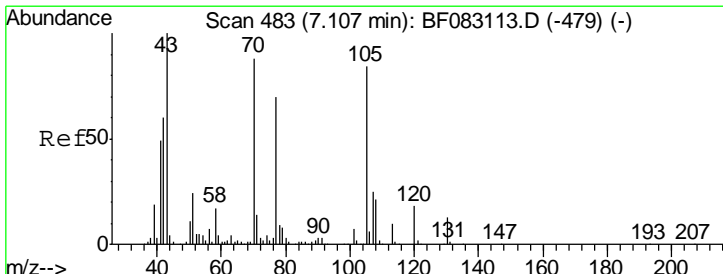
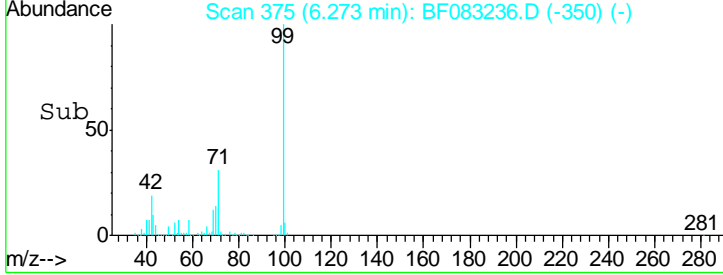
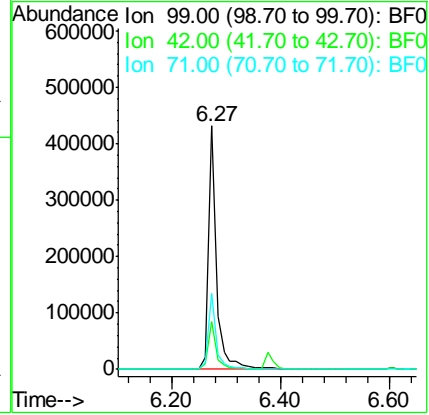
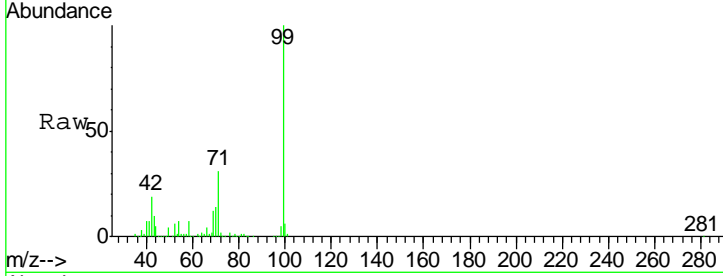




#7
 Phenol-d6
 Concen: 28.86 ng
 RT: 6.27 min Scan# 375
 Delta R.T. -0.01 min
 Lab File: BF083236.D
 Acq: 24 Nov 2015 14:51

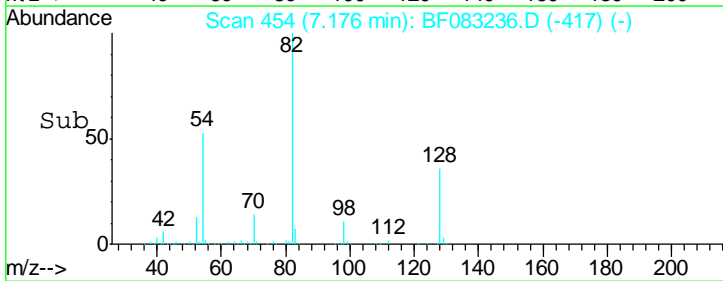
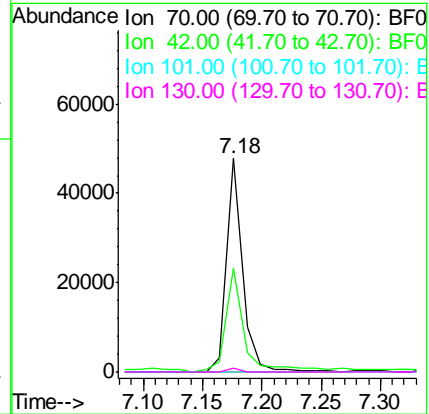
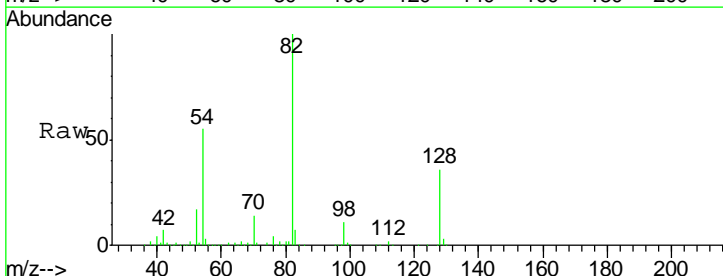
Instrument :
 BNA_F
 ClientSampled :

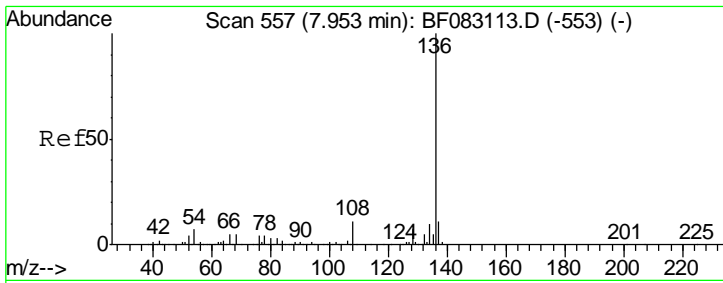
Tgt Ion	Resp	Lower	Upper
99	435522		
42	19.4	17.7	26.5
71	31.1	30.2	45.4



#19
 n-Nitroso-di-n-propylamine
 Concen: 4.24 ng
 RT: 7.18 min Scan# 454
 Delta R.T. 0.13 min
 Lab File: BF083236.D
 Acq: 24 Nov 2015 14:51

Tgt Ion	Resp	Lower	Upper
70	44566		
42	48.8	54.5	81.7#
101	0.0	6.6	9.8#
130	1.9	11.5	17.3#

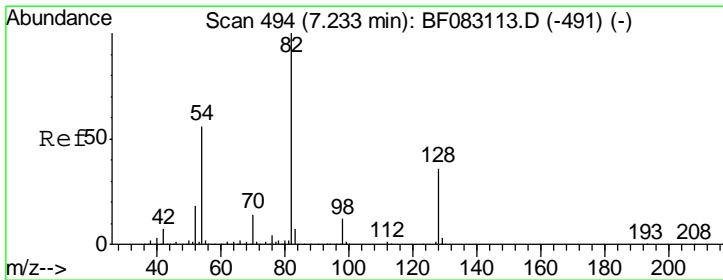
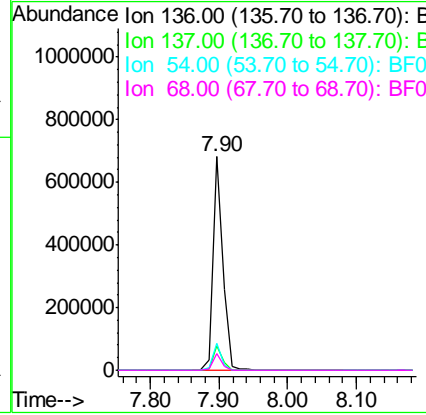
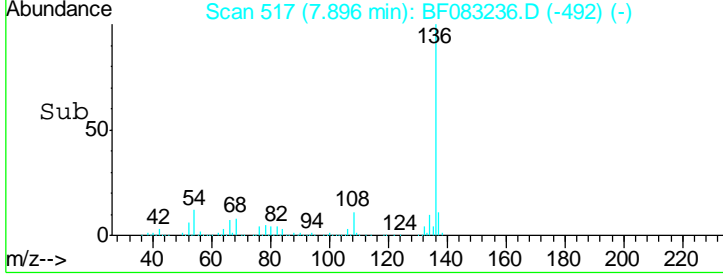
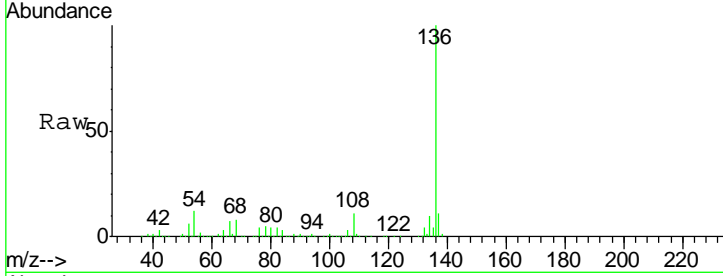




#21
 Naphthalene-d8
 Concen: 20.00 ng
 RT: 7.90 min Scan# 517
 Delta R.T. -0.01 min
 Lab File: BF083236.D
 Acq: 24 Nov 2015 14:51

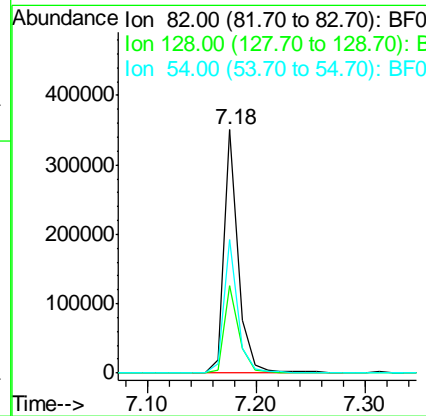
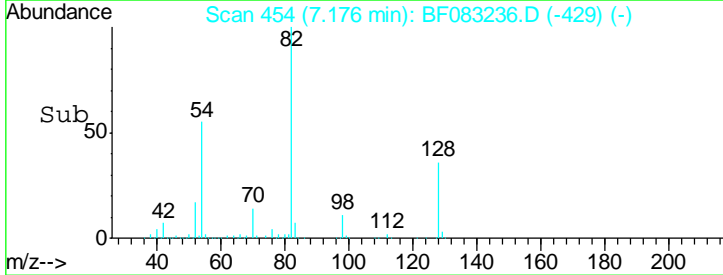
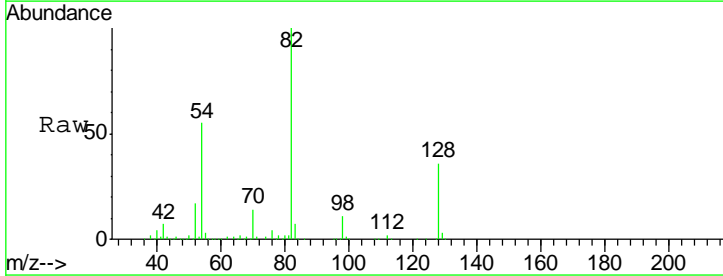
Instrument :
 BNA_F
 ClientSampled :

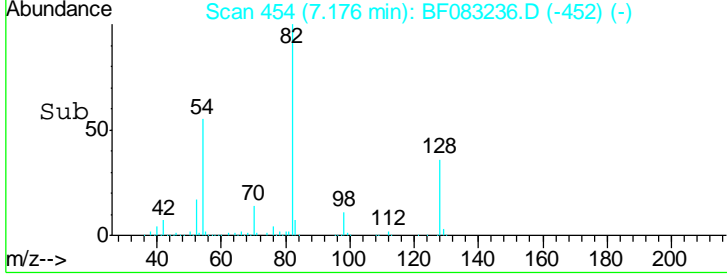
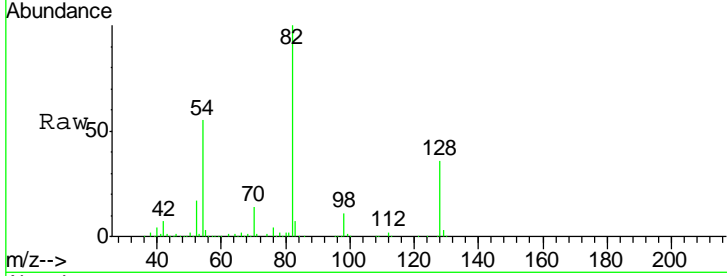
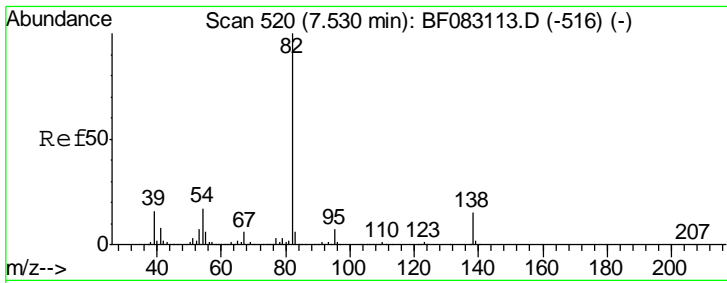
Tgt Ion	Resp	Lower	Upper
136	100		
137	11.5	8.7	13.1
54	12.4	5.8	8.6#
68	8.0	3.8	5.8#



#23
 Nitrobenzene-d5
 Concen: 21.55 ng
 RT: 7.18 min Scan# 454
 Delta R.T. -0.01 min
 Lab File: BF083236.D
 Acq: 24 Nov 2015 14:51

Tgt Ion	Resp	Lower	Upper
82	100		
128	35.9	28.5	42.7
54	54.7	44.6	67.0

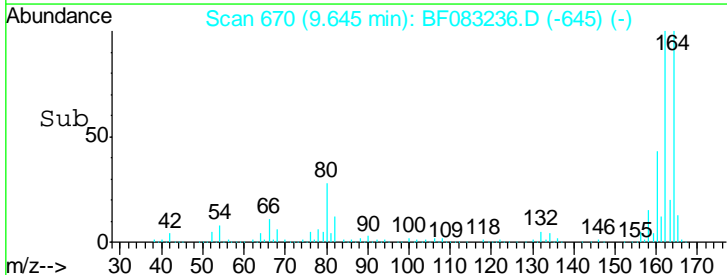
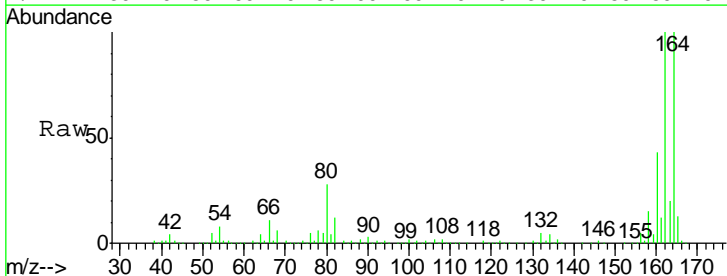
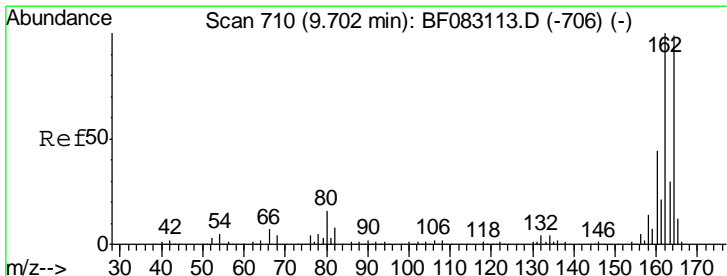
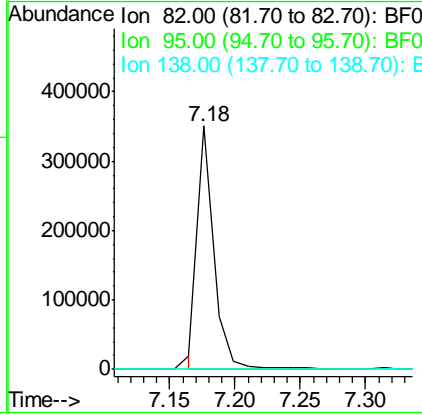




#25
 Isophorone
 Concen: 10.76 ng
 RT: 7.18 min Scan# 454
 Delta R.T. -0.27 min
 Lab File: BF083236.D
 Acq: 24 Nov 2015 14:51

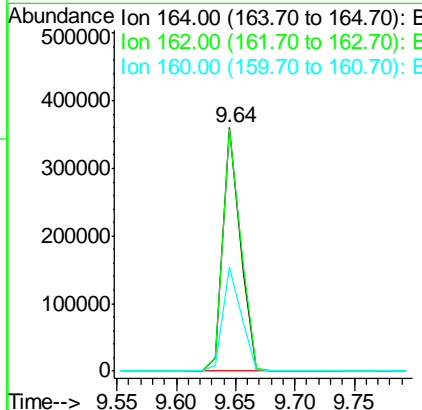
Instrument :
 BNA_F
 ClientSampled :

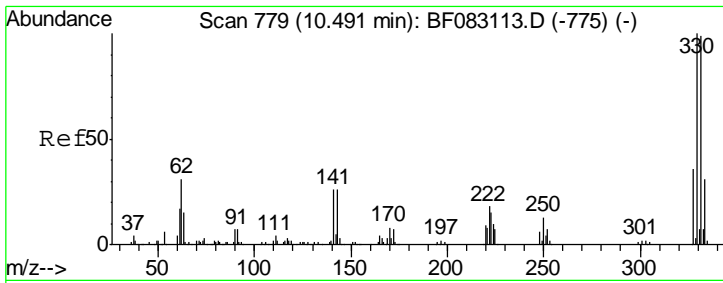
Tgt Ion	Resp	Lower	Upper
82	307120		
95	0.1	5.8	8.8#
138	0.0	11.6	17.4#



#38
 Acenaphthene-d10
 Concen: 20.00 ng
 RT: 9.64 min Scan# 670
 Delta R.T. -0.01 min
 Lab File: BF083236.D
 Acq: 24 Nov 2015 14:51

Tgt Ion	Resp	Lower	Upper
164	363199		
162	99.8	81.2	121.8
160	42.9	35.6	53.4

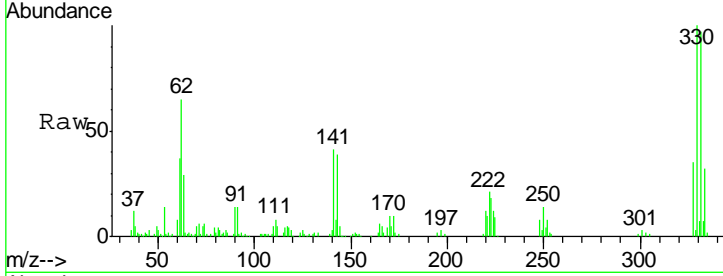




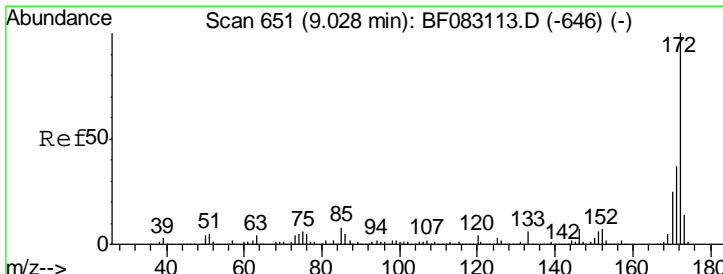
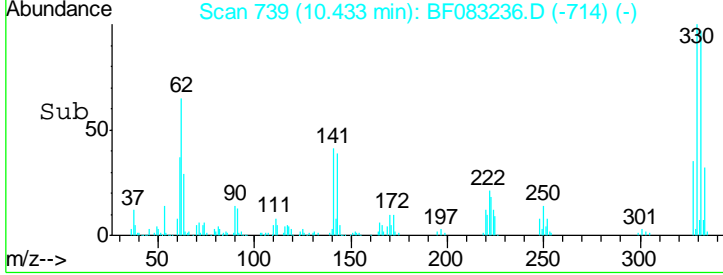
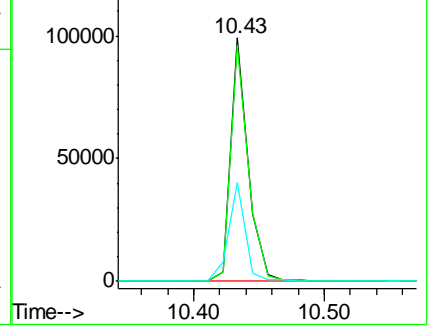
#41
 2,4,6-Tribromophenol
 Concen: 24.98 ng
 RT: 10.43 min Scan# 739
 Delta R.T. -0.01 min
 Lab File: BF083236.D
 Acq: 24 Nov 2015 14:51

Instrument :
 BNA_F
 ClientSampled :

Tgt Ion	Resp	Lower	Upper
330	100		
332	97.4	77.7	116.5
141	39.5	29.7	44.5

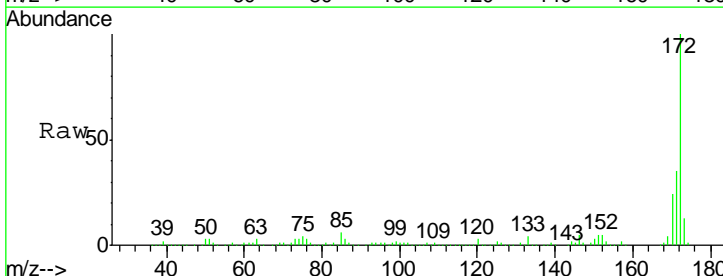


Abundance Ion 329.80 (329.50 to 330.50): E
 Ion 331.80 (331.50 to 332.50): E
 Ion 141.00 (140.70 to 141.70): E

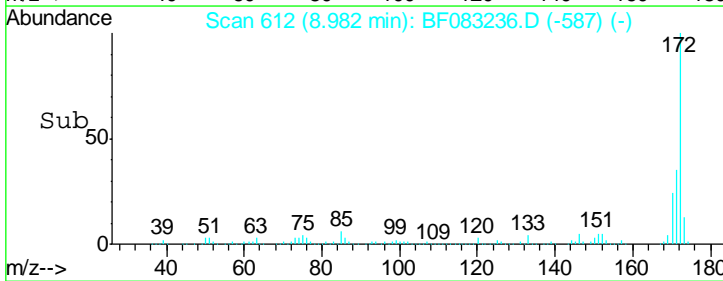
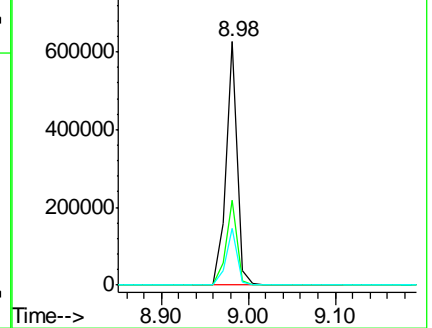


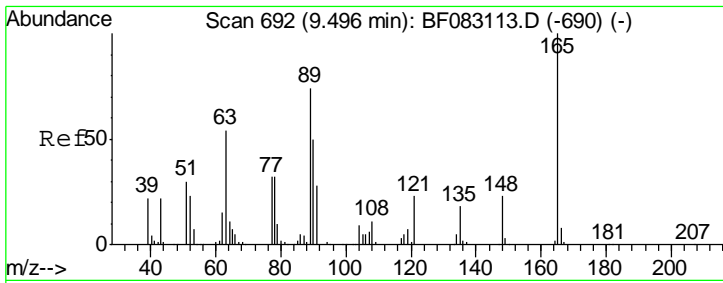
#44
 2-Fluorobiphenyl
 Concen: 22.08 ng
 RT: 8.98 min Scan# 612
 Delta R.T. -0.01 min
 Lab File: BF083236.D
 Acq: 24 Nov 2015 14:51

Tgt Ion	Resp	Lower	Upper
172	100		
171	34.8	29.5	44.3
170	23.6	19.9	29.9



Abundance Ion 172.00 (171.70 to 172.70): E
 Ion 171.00 (170.70 to 171.70): E
 Ion 170.00 (169.70 to 170.70): E

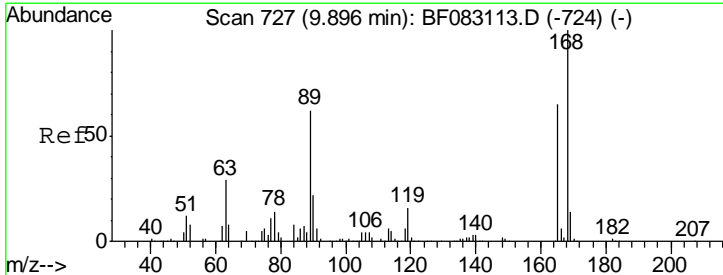
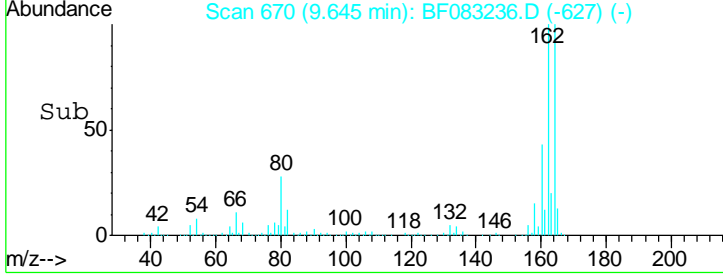
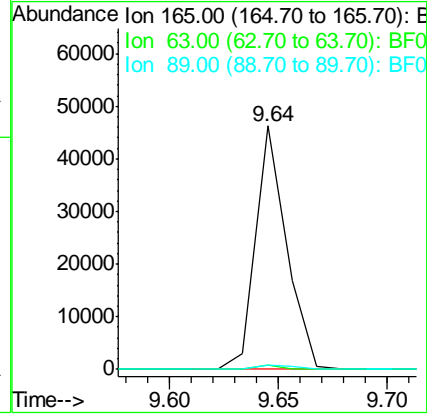
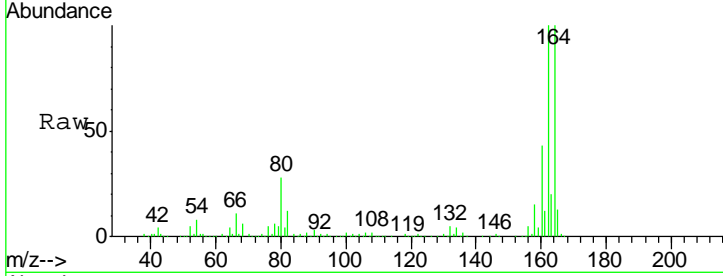




#50
 2,6-Dinitrotoluene
 Concen: 7.27 ng
 RT: 9.64 min Scan# 670
 Delta R.T. 0.19 min
 Lab File: BF083236.D
 Acq: 24 Nov 2015 14:51

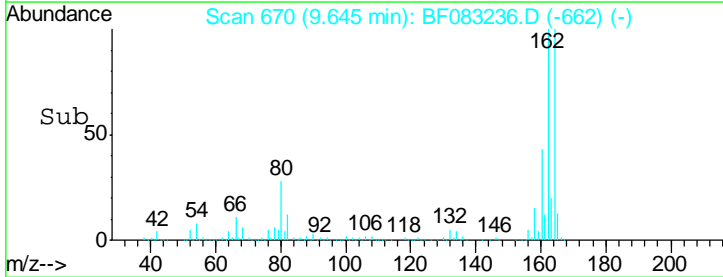
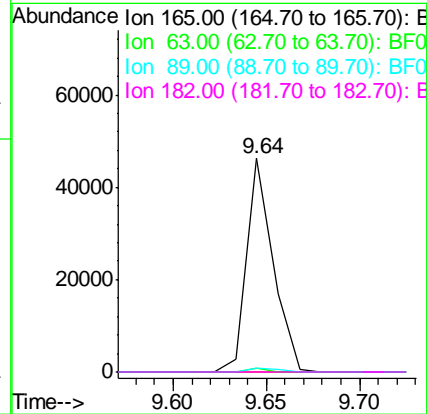
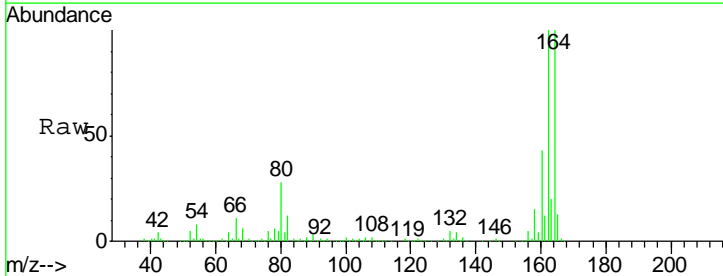
Instrument :
 BNA_F
 ClientSampleId :

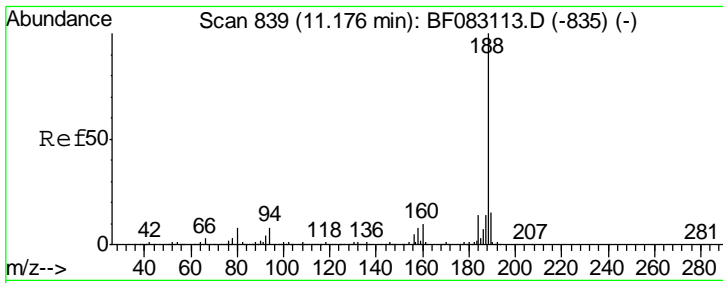
Tgt Ion	Resp	Lower	Upper
165	100		
63	1.8	62.5	93.7#
89	1.9	59.1	88.7#



#56
 2,4-Dinitrotoluene
 Concen: 5.74 ng
 RT: 9.64 min Scan# 670
 Delta R.T. -0.21 min
 Lab File: BF083236.D
 Acq: 24 Nov 2015 14:51

Tgt Ion	Resp	Lower	Upper
165	100		
63	1.8	54.5	81.7#
89	1.9	77.3	115.9#
182	0.0	1.8	2.6#

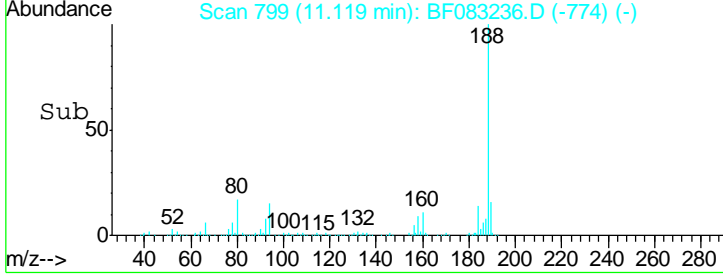
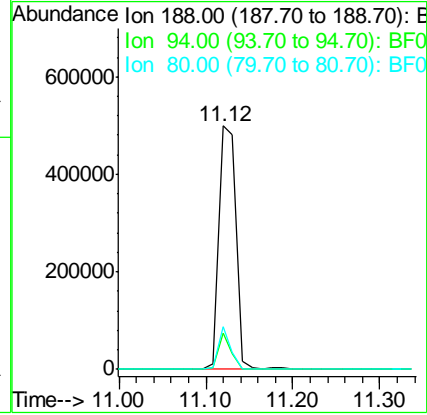
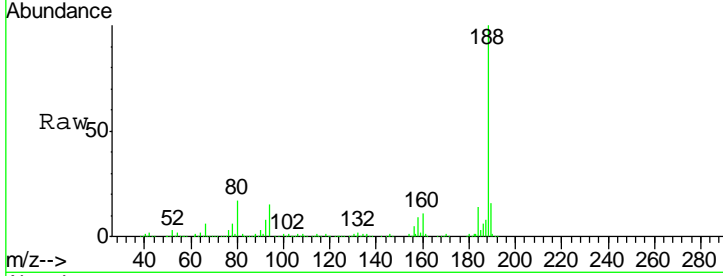




#63
 Phenanthrene-d10
 Concen: 20.00 ng
 RT: 11.12 min Scan# 799
 Delta R.T. -0.01 min
 Lab File: BF083236.D
 Acq: 24 Nov 2015 14:51

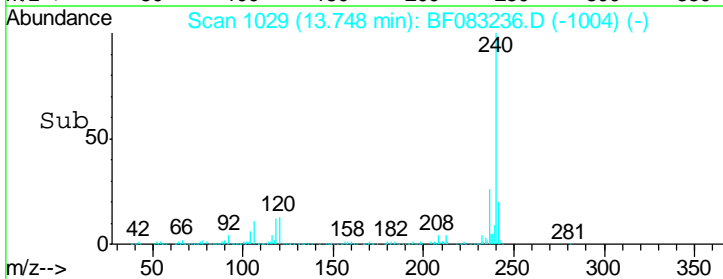
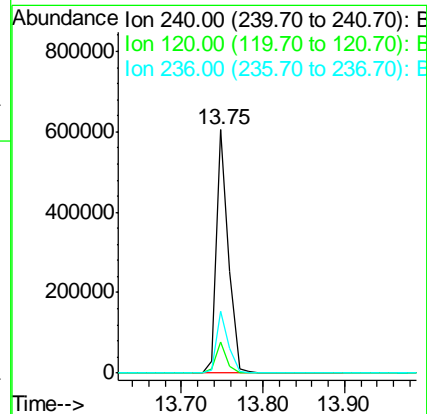
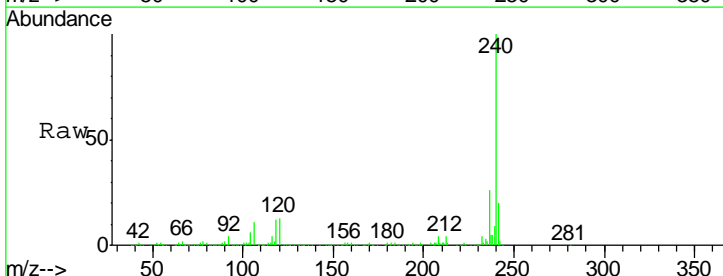
Instrument :
 BNA_F
 ClientSampled :

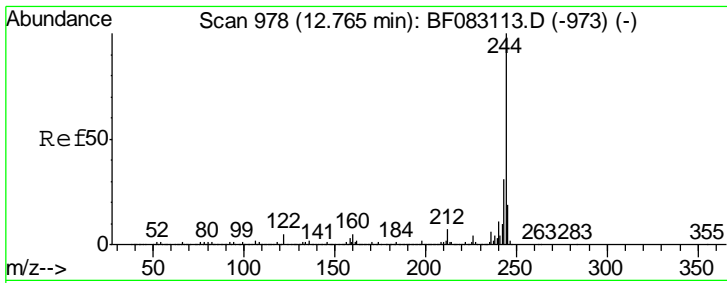
Tgt Ion	Resp	Lower	Upper
188	100		
94	14.8	6.0	9.0#
80	17.4	6.7	10.1#



#75
 Chrysene-d12
 Concen: 20.00 ng
 RT: 13.75 min Scan# 1029
 Delta R.T. -0.01 min
 Lab File: BF083236.D
 Acq: 24 Nov 2015 14:51

Tgt Ion	Resp	Lower	Upper
240	100		
120	13.0	5.4	8.2#
236	25.6	20.6	31.0

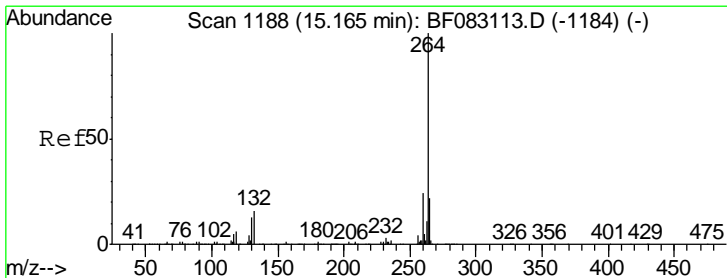
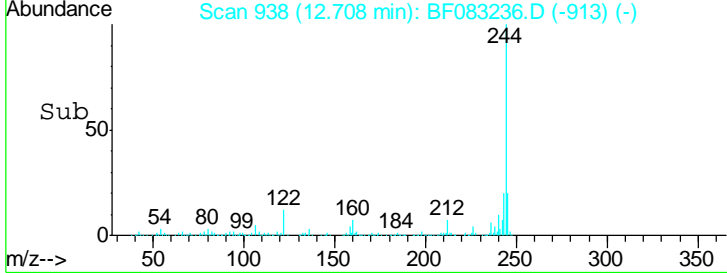
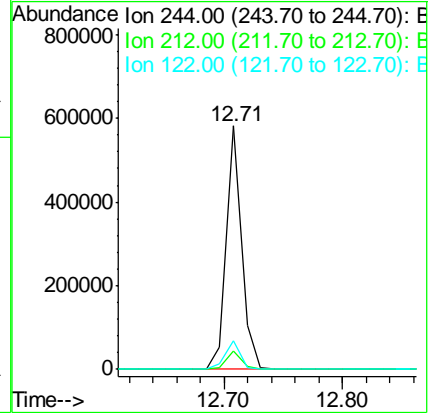
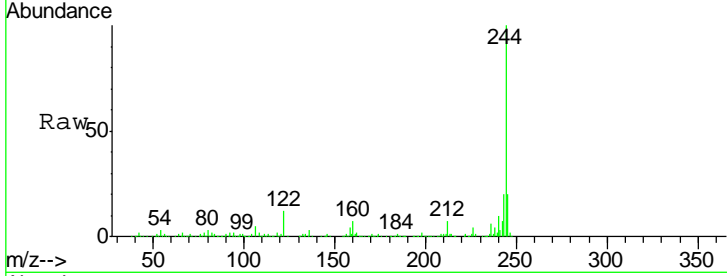




#78
 Terphenyl-d14
 Concen: 19.34 ng
 RT: 12.71 min Scan# 938
 Delta R.T. -0.01 min
 Lab File: BF083236.D
 Acq: 24 Nov 2015 14:51

Instrument :
 BNA_F
 ClientSampled :

Tgt Ion	Resp	Lower	Upper
244	511154		
212	7.4	5.4	8.2
122	12.0	4.3	6.5#



#86
 Perylene-d12
 Concen: 20.00 ng
 RT: 15.11 min Scan# 1148
 Delta R.T. -0.01 min
 Lab File: BF083236.D
 Acq: 24 Nov 2015 14:51

Tgt Ion	Resp	Lower	Upper
264	478342		
260	23.6	19.1	28.7
265	21.4	18.2	27.4

