

Data Path : Z:\svoasrv\HPCHEM1\BNA_F\Data\BF112720\
 Data File : BF122494.D
 Acq On : 27 Nov 2020 10:20
 Operator : JU/CG
 Sample : SSTDCCC040
 Misc :
 ALS Vial : 2 Sample Multiplier: 1

Instrument :
 BNA_F
 ClientSampleId :
 SSTDCCC040

Quant Time: Nov 27 11:34:11 2020
 Quant Method : Z:\SVOASRV\HPCHEM1\BNA_F\METHODS\8270-BF110920.M
 Quant Title : ASP BNA STANDARDS FOR 5 POINT CALIBRATION
 QLast Update : Tue Nov 24 14:38:56 2020
 Response via : Initial Calibration

Compound	R.T.	QIon	Response	Conc	Units	Dev(Min)	
Internal Standards							
1) 1,4-Dichlorobenzene-d4	6.857	152	210488	20.00	ng	0.00	
21) Naphthalene-d8	8.145	136	768404	20.00	ng	0.00	
39) Acenaphthene-d10	9.904	164	406942	20.00	ng	0.00	
64) Phenanthrene-d10	11.386	188	749693	20.00	ng	0.00	
76) Chrysene-d12	14.033	240	656136	20.00	ng	0.00	
86) Perylene-d12	15.498	264	652242	20.00	ng	0.00	
System Monitoring Compounds							
5) 2-Fluorophenol	5.475	112	1065320	77.71	ng	0.00	
7) Phenol-d6	6.498	99	1362013	75.95	ng	0.00	
23) Nitrobenzene-d5	7.428	82	1126953	89.79	ng	0.00	
42) 2,4,6-Tribromophenol	10.692	330	396049	90.68	ng	0.00	
45) 2-Fluorobiphenyl	9.222	172	1984298	76.19	ng	0.00	
79) Terphenyl-d14	12.974	244	2355382	76.05	ng	0.00	
Target Compounds							
2) 1,4-Dioxane	2.628	88	232830	37.04	ng		Qvalue 87
3) Pyridine	3.375	79	635380	36.75	ng		89
4) n-Nitrosodimethylamine	3.334	42	264405	32.44	ng		87
6) Aniline	6.522	93	863481	36.70	ng		97
8) 2-Chlorophenol	6.645	128	558897	39.31	ng		92
9) Benzaldehyde	6.404	77	365545	37.86	ng		99
10) Phenol	6.510	94	707909	40.09	ng		92
11) bis(2-Chloroethyl)ether	6.592	93	524700	37.38	ng		94
12) 1,3-Dichlorobenzene	6.798	146	620373	38.44	ng		98
13) 1,4-Dichlorobenzene	6.875	146	629738	38.84	ng		98
14) 1,2-Dichlorobenzene	7.034	146	589502	38.96	ng		99
15) Benzyl Alcohol	7.004	79	482323	37.83	ng		99
16) 2,2'-oxybis(1-Chloropr...	7.134	45	688325	33.64	ng		94
17) 2-Methylphenol	7.116	107	460858	38.84	ng		99
18) Hexachloroethane	7.375	117	221992	39.32	ng		93
19) n-Nitroso-di-n-propyla...	7.275	70	368272	34.37	ng		94
20) 3+4-Methylphenols	7.269	107	538293	36.87	ng		97
22) Acetophenone	7.269	105	718293	35.89	ng		95
24) Nitrobenzene	7.445	77	594055	41.37	ng		92
25) Isophorone	7.686	82	1014875	36.27	ng		94
26) 2-Nitrophenol	7.757	139	293815	47.25	ng		99
27) 2,4-Dimethylphenol	7.798	122	475935	36.06	ng		99
28) bis(2-Chloroethoxy)met...	7.892	93	639463	37.36	ng		99
29) 2,4-Dichlorophenol	8.004	162	476996	40.82	ng		95
30) 1,2,4-Trichlorobenzene	8.086	180	508640	39.44	ng		97
31) Naphthalene	8.169	128	1577719	38.62	ng		99
32) Benzoic acid	7.922	122	244304	35.85	ng		99
33) 4-Chloroaniline	8.216	127	687326	38.63	ng		96
34) Hexachlorobutadiene	8.286	225	295086	39.81	ng		99
35) Caprolactam	8.592	113	150988	40.77	ng	#	80
36) 4-Chloro-3-methylphenol	8.698	107	495753	40.68	ng		96
37) 2-Methylnaphthalene	8.857	142	1047692	38.82	ng		98
38) 1-Methylnaphthalene	8.957	142	980241	38.80	ng		97
40) 1,2,4,5-Tetrachloroben...	9.028	216	502037	40.04	ng		99
41) Hexachlorocyclopentadiene	9.010	237	280108	38.20	ng		98
43) 2,4,6-Trichlorophenol	9.133	196	335389	41.18	ng		100

Data Path : Z:\svoasrv\HPCHEM1\BNA_F\Data\BF112720\
 Data File : BF122494.D
 Acq On : 27 Nov 2020 10:20
 Operator : JU/CG
 Sample : SSTDCCC040
 Misc :
 ALS Vial : 2 Sample Multiplier: 1

Instrument :
 BNA_F
 ClientSampleId :
 SSTDCCC040

Quant Time: Nov 27 11:34:11 2020
 Quant Method : Z:\SVOASRV\HPCHEM1\BNA_F\METHODS\8270-BF110920.M
 Quant Title : ASP BNA STANDARDS FOR 5 POINT CALIBRATION
 QLast Update : Tue Nov 24 14:38:56 2020
 Response via : Initial Calibration

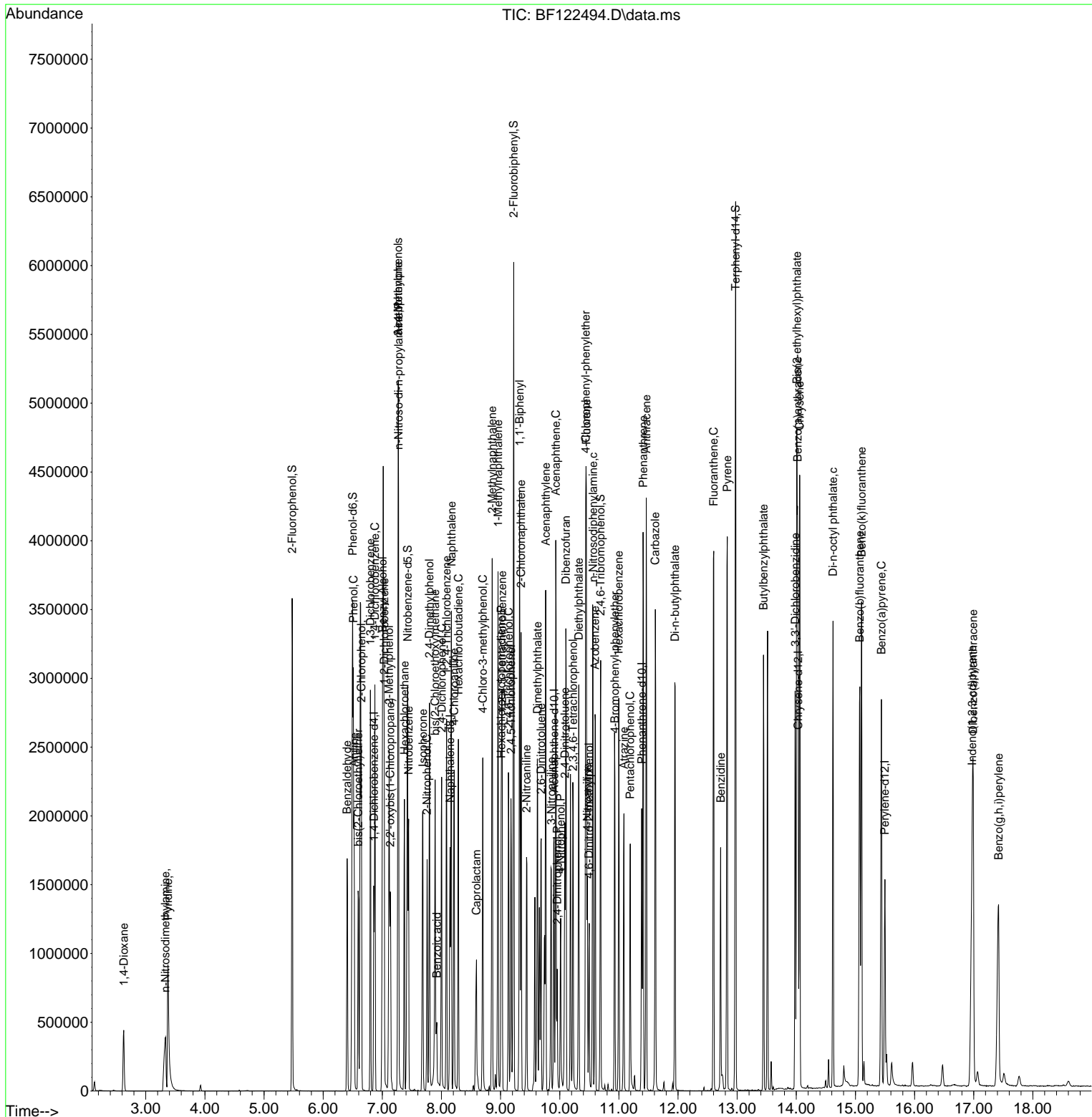
Compound	R.T.	QIon	Response	Conc	Units	Dev(Min)
44) 2,4,5-Trichlorophenol	9.175	196	370377	43.38	ng	99
46) 1,1'-Biphenyl	9.322	154	1259234	38.87	ng	99
47) 2-Chloronaphthalene	9.345	162	1007055	39.17	ng	99
48) 2-Nitroaniline	9.439	65	308779	41.14	ng	94
49) Acenaphthylene	9.763	152	1548532	39.19	ng	99
50) Dimethylphthalate	9.622	163	1149599	39.74	ng	99
51) 2,6-Dinitrotoluene	9.686	165	267699	42.09	ng	# 80
52) Acenaphthene	9.933	154	980696	40.10	ng	98
53) 3-Nitroaniline	9.857	138	295011	40.81	ng	91
54) 2,4-Dinitrophenol	9.957	184	112240	54.11	ng	93
55) Dibenzofuran	10.104	168	1398026	39.01	ng	99
56) 4-Nitrophenol	10.016	139	231078	39.56	ng	98
57) 2,4-Dinitrotoluene	10.086	165	360647	44.81	ng	90
58) Fluorene	10.451	166	1071086	39.03	ng	100
59) 2,3,4,6-Tetrachlorophenol	10.227	232	307363	43.29	ng	97
60) Diethylphthalate	10.322	149	1097060	38.66	ng	99
61) 4-Chlorophenyl-phenyle...	10.439	204	510239	39.39	ng	95
62) 4-Nitroaniline	10.469	138	300406	42.31	ng	97
63) Azobenzene	10.598	77	1070570	35.96	ng	97
65) 4,6-Dinitro-2-methylph...	10.498	198	168931	51.09	ng	88
66) n-Nitrosodiphenylamine	10.563	169	966411	37.83	ng	95
67) 4-Bromophenyl-phenylether	10.933	248	346513	39.33	ng	94
68) Hexachlorobenzene	10.998	284	386680	40.62	ng	98
69) Atrazine	11.086	200	252612	39.71	ng	98
70) Pentachlorophenol	11.192	266	221412	40.38	ng	99
71) Phenanthrene	11.410	178	1629866	38.32	ng	99
72) Anthracene	11.463	178	1692113	38.60	ng	99
73) Carbazole	11.616	167	1549161	38.84	ng	100
74) Di-n-butylphthalate	11.951	149	1639312	38.56	ng	99
75) Fluoranthene	12.604	202	1757397	39.58	ng	97
77) Benzidine	12.721	184	678825	37.30	ng	99
78) Pyrene	12.833	202	1782792	38.68	ng	99
80) Butylbenzylphthalate	13.445	149	715326	39.33	ng	99
81) Benzo(a)anthracene	14.021	228	1603747	39.30	ng	99
82) 3,3'-Dichlorobenzidine	13.980	252	635860	41.81	ng	99
83) Chrysene	14.057	228	1591238	38.72	ng	99
84) Bis(2-ethylhexyl)phtha...	14.010	149	913378	41.10	ng	96
85) Di-n-octyl phthalate	14.621	149	1620830	43.03	ng	95
87) Indeno(1,2,3-cd)pyrene	16.974	276	1563972	39.96	ng	99
88) Benzo(b)fluoranthene	15.074	252	1673281	39.61	ng	99
89) Benzo(k)fluoranthene	15.104	252	1563780	37.96	ng	99
90) Benzo(a)pyrene	15.439	252	1454197	39.49	ng	99
91) Dibenzo(a,h)anthracene	16.992	278	1270013	38.74	ng	98
92) Benzo(g,h,i)perylene	17.421	276	1278362	40.10	ng	98

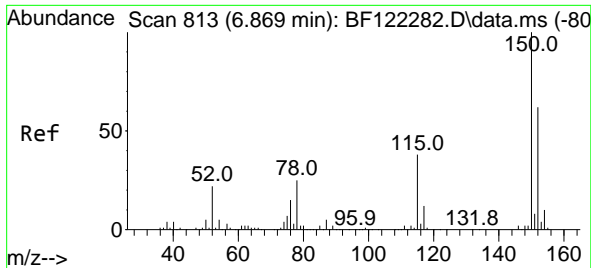
(#) = qualifier out of range (m) = manual integration (+) = signals summed

Data Path : Z:\svoasrv\HPCHEM1\BNA_F\Data\BF112720\
 Data File : BF122494.D
 Acq On : 27 Nov 2020 10:20
 Operator : JU/CG
 Sample : SSTDCCC040
 Misc :
 ALS Vial : 2 Sample Multiplier: 1

Instrument :
 BNA_F
 Client Sampled :
 SSTDCCC040

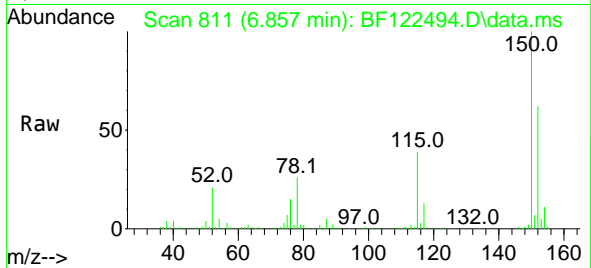
Quant Time: Nov 27 11:34:11 2020
 Quant Method : Z:\SVOASRV\HPCHEM1\BNA_F\METHODS\8270-BF110920.M
 Quant Title : ASP BNA STANDARDS FOR 5 POINT CALIBRATION
 QLast Update : Tue Nov 24 14:38:56 2020
 Response via : Initial Calibration



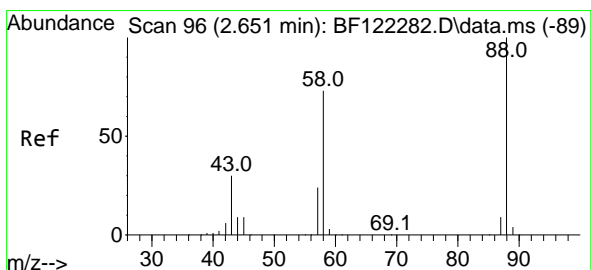
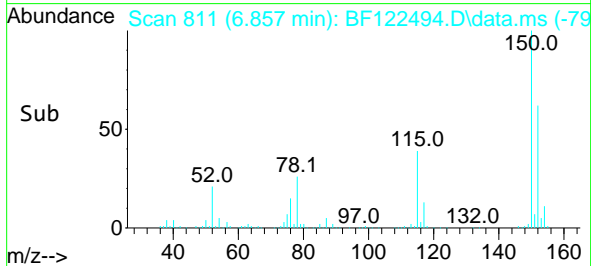
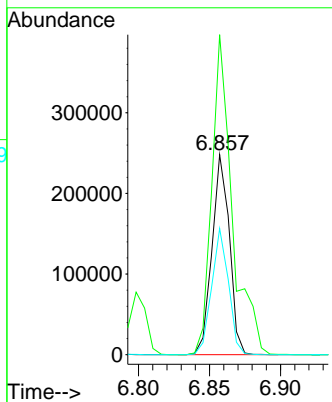


#1
 1,4-Dichlorobenzene-d4
 Concen: 20.00 ng
 RT: 6.857 min Scan# 811
 Delta R.T. 0.000 min
 Lab File: BF122494.D
 Acq: 27 Nov 2020 10:20

Instrument :
 BNA_F
 ClientSampled :
 SSTDCCC040

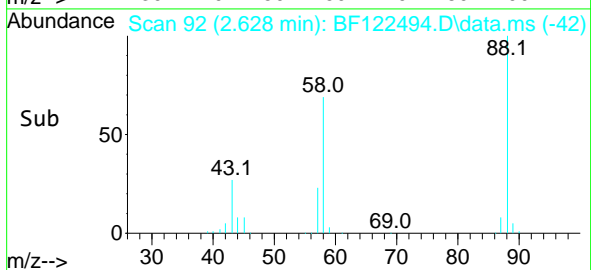
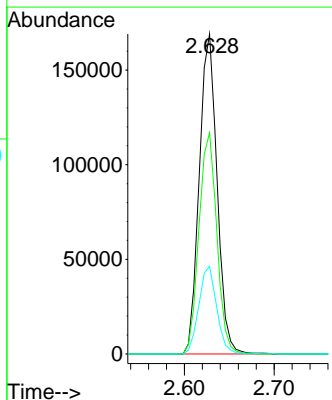
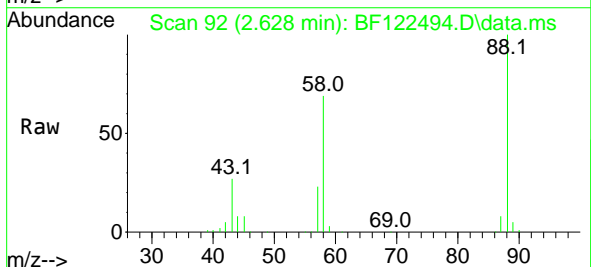


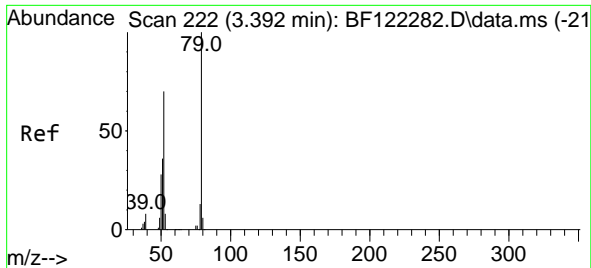
Tgt Ion:152 Resp: 210488
 Ion Ratio Lower Upper
 152 100
 150 160.0 125.3 187.9
 115 63.1 51.9 77.9



#2
 1,4-Dioxane
 Concen: 37.04 ng
 RT: 2.628 min Scan# 92
 Delta R.T. -0.006 min
 Lab File: BF122494.D
 Acq: 27 Nov 2020 10:20

Tgt Ion: 88 Resp: 232830
 Ion Ratio Lower Upper
 88 100
 58 69.4 65.8 98.8
 43 27.4 25.8 38.8

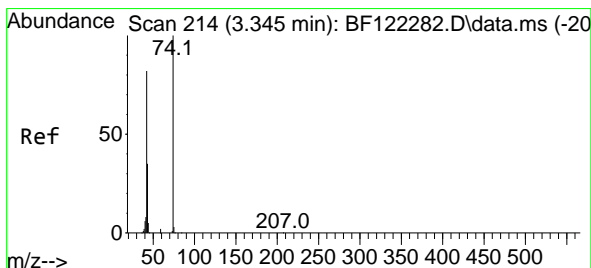
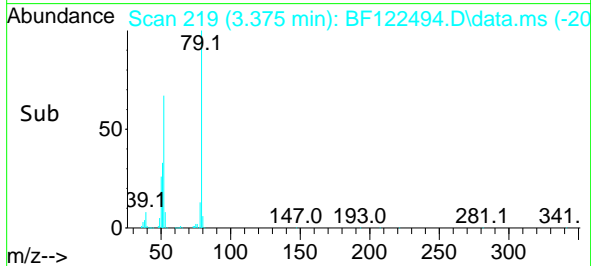
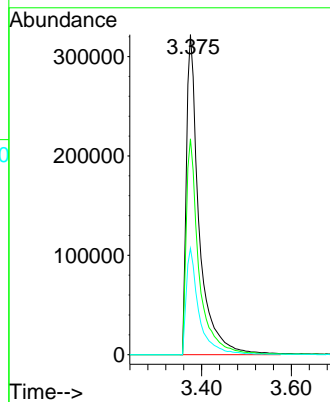
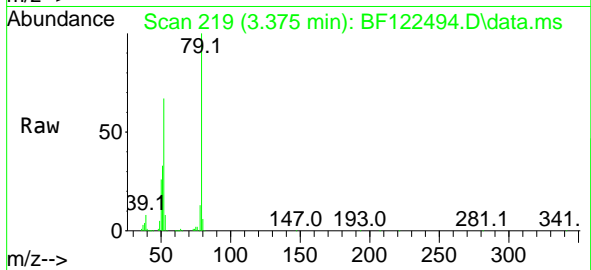




#3
 Pyridine
 Concen: 36.75 ng
 RT: 3.375 min Scan# 219
 Delta R.T. -0.006 min
 Lab File: BF122494.D
 Acq: 27 Nov 2020 10:20

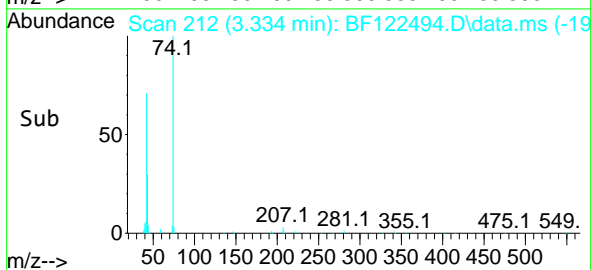
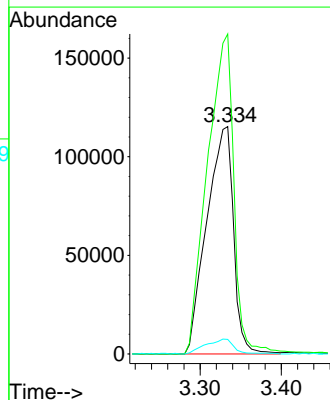
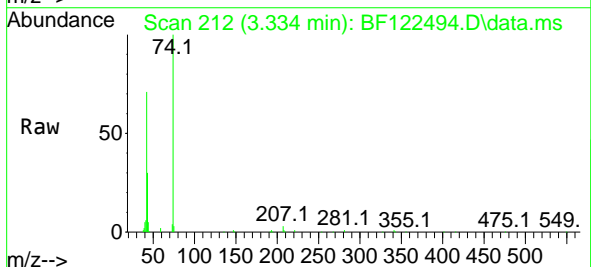
Instrument :
 BNA_F
 ClientSampleId :
 SSTDCCC040

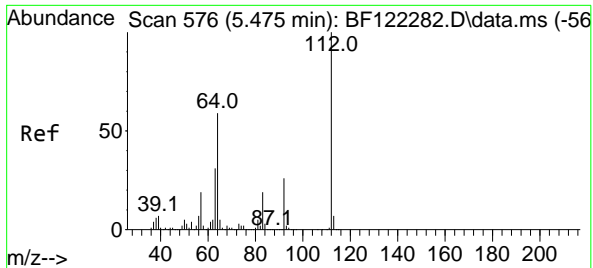
Tgt Ion	Resp	Lower	Upper
79	100		
52	67.4	62.2	93.4
51	33.2	31.1	46.7



#4
 n-Nitrosodimethylamine
 Concen: 32.44 ng
 RT: 3.334 min Scan# 212
 Delta R.T. -0.006 min
 Lab File: BF122494.D
 Acq: 27 Nov 2020 10:20

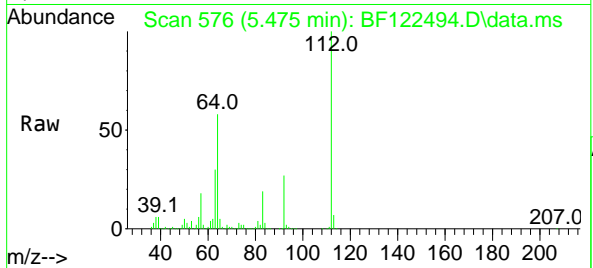
Tgt Ion	Resp	Lower	Upper
42	100		
74	140.7	100.2	150.2
44	6.4	5.8	8.6



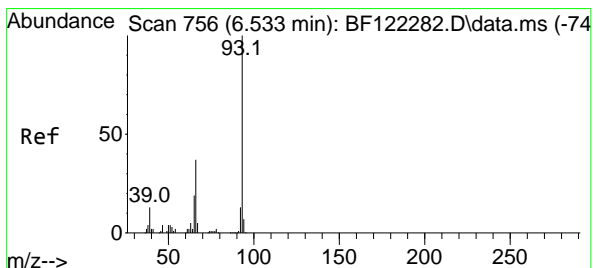
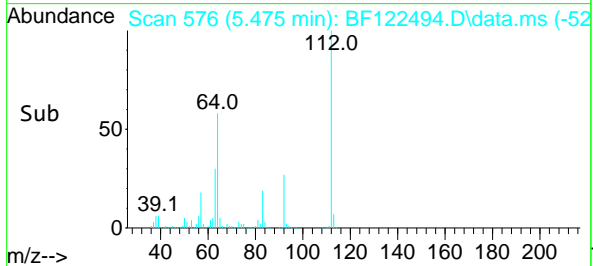
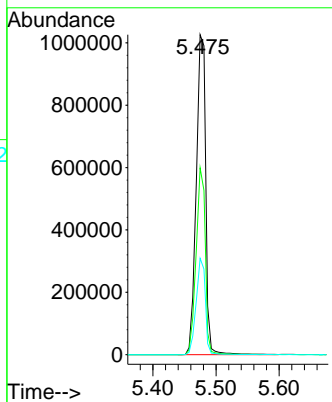


#5
 2-Fluorophenol
 Concen: 77.71 ng
 RT: 5.475 min Scan# 576
 Delta R.T. -0.006 min
 Lab File: BF122494.D
 Acq: 27 Nov 2020 10:20

Instrument :
 BNA_F
 ClientSampleId :
 SSTDCCC040

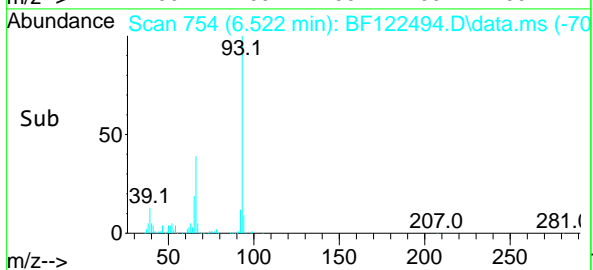
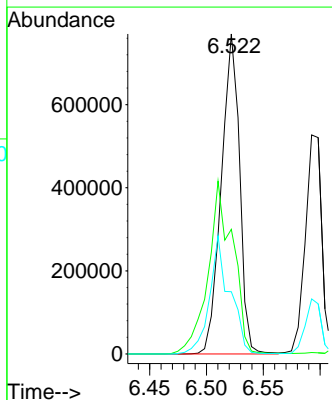
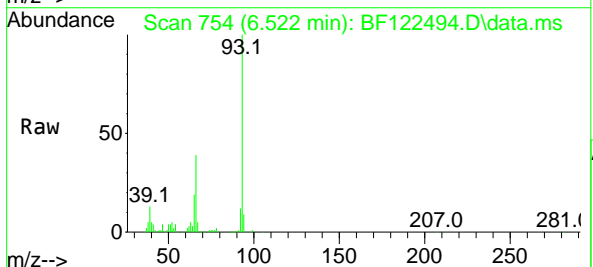


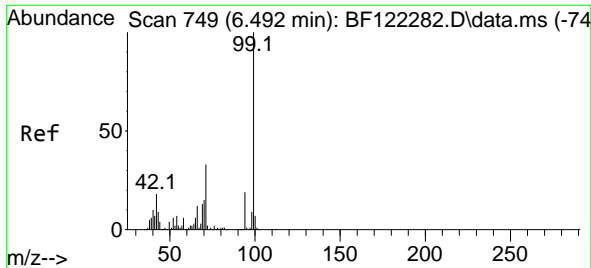
Tgt Ion:112 Resp: 1065320
 Ion Ratio Lower Upper
 112 100
 64 58.4 50.4 75.6
 63 30.1 25.8 38.6



#6
 Aniline
 Concen: 36.70 ng
 RT: 6.522 min Scan# 754
 Delta R.T. -0.000 min
 Lab File: BF122494.D
 Acq: 27 Nov 2020 10:20

Tgt Ion: 93 Resp: 863481
 Ion Ratio Lower Upper
 93 100
 66 38.9 32.7 49.1
 65 19.5 16.6 24.8

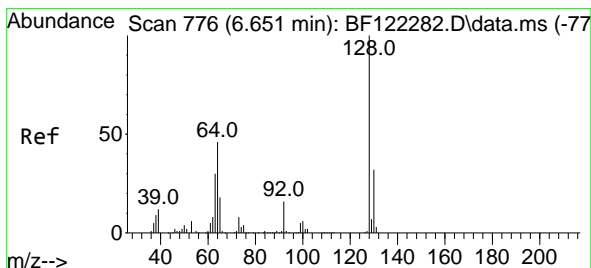
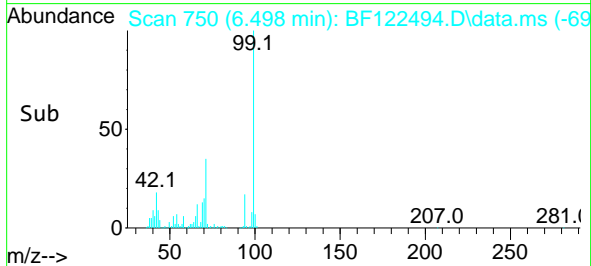
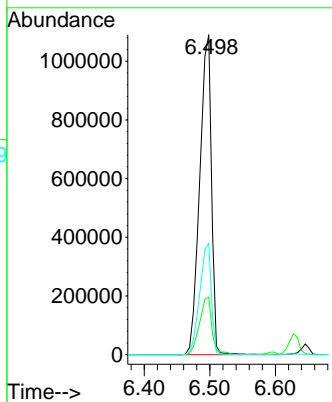
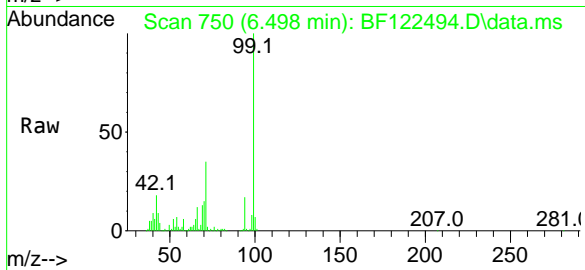




#7
Phenol-d6
Concen: 75.95 ng
RT: 6.498 min Scan# 750
Delta R.T. -0.000 min
Lab File: BF122494.D
Acq: 27 Nov 2020 10:20

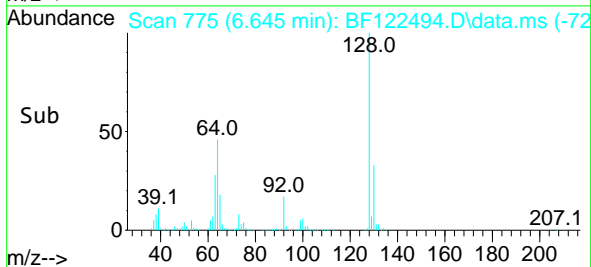
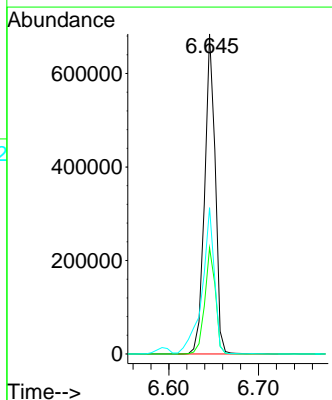
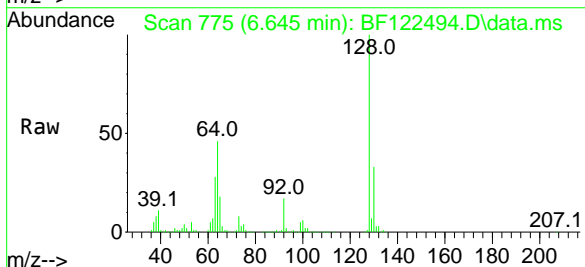
Instrument :
BNA_F
ClientSampled :
SSTDCCC040

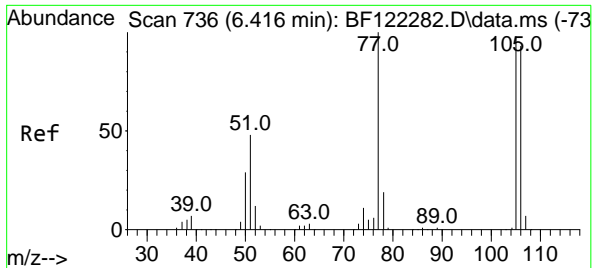
Tgt Ion: 99 Resp: 1362013
Ion Ratio Lower Upper
99 100
42 18.0 15.9 23.9
71 34.8 27.1 40.7



#8
2-Chlorophenol
Concen: 39.31 ng
RT: 6.645 min Scan# 775
Delta R.T. -0.000 min
Lab File: BF122494.D
Acq: 27 Nov 2020 10:20

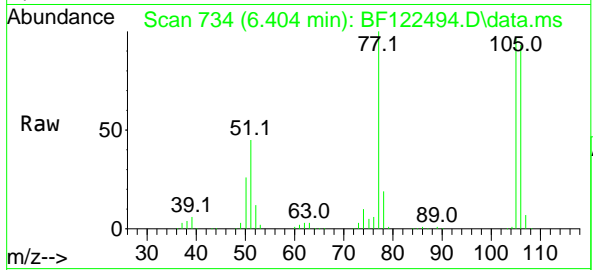
Tgt Ion:128 Resp: 558897
Ion Ratio Lower Upper
128 100
130 33.2 12.4 52.4
64 45.7 34.8 74.8





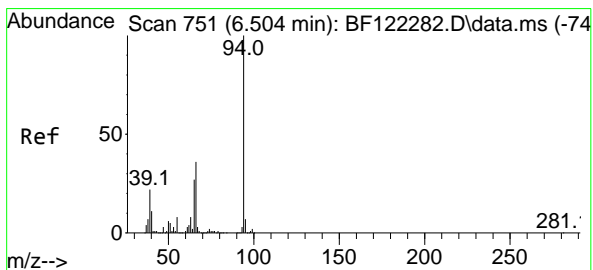
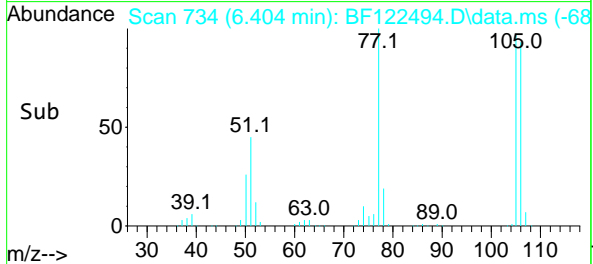
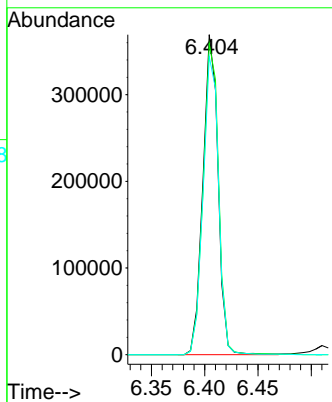
#9
Benzaldehyde
Concen: 37.86 ng
RT: 6.404 min Scan# 734
Delta R.T. -0.000 min
Lab File: BF122494.D
Acq: 27 Nov 2020 10:20

Instrument :
BNA_F
ClientSampled :
SSTDCCC040

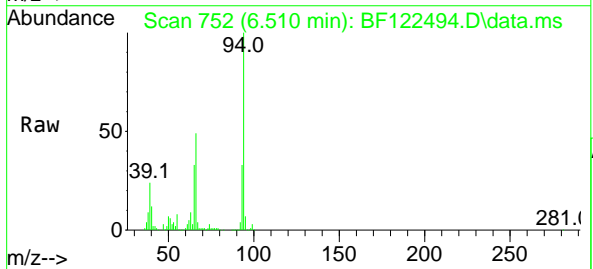


Tgt Ion: 77 Resp: 365545

Ion	Ratio	Lower	Upper
77	100		
105	97.2	76.7	116.7
106	93.2	71.3	111.3

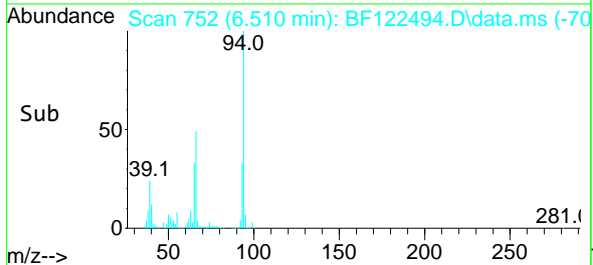
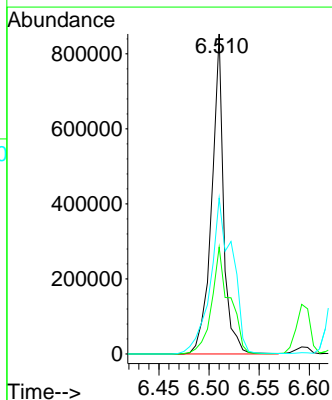


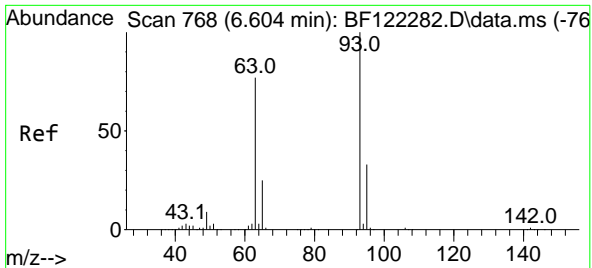
#10
Phenol
Concen: 40.09 ng
RT: 6.510 min Scan# 752
Delta R.T. -0.000 min
Lab File: BF122494.D
Acq: 27 Nov 2020 10:20



Tgt Ion: 94 Resp: 707909

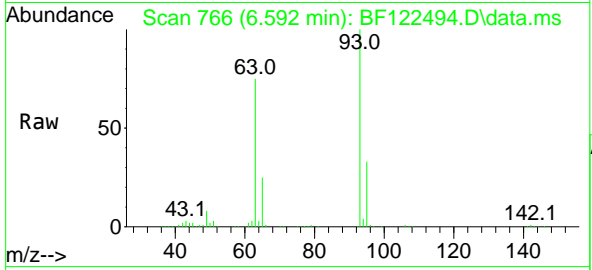
Ion	Ratio	Lower	Upper
94	100		
65	33.4	17.1	57.1
66	48.7	36.0	76.0





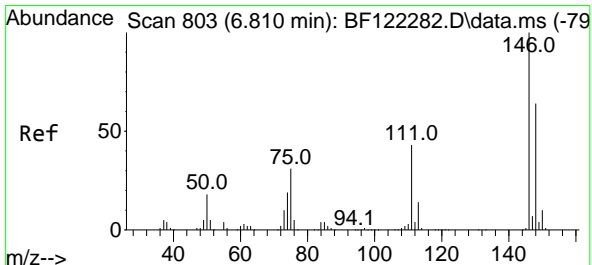
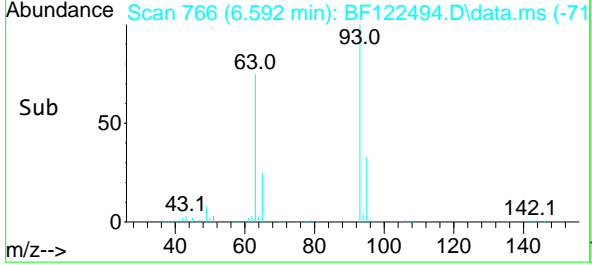
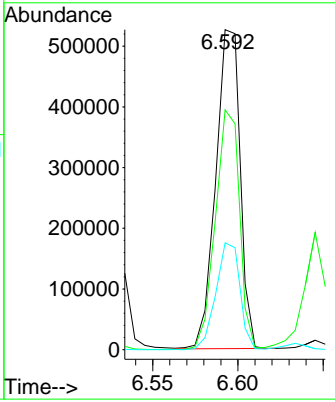
#11
 bis(2-Chloroethyl)ether
 Concen: 37.38 ng
 RT: 6.592 min Scan# 766
 Delta R.T. -0.006 min
 Lab File: BF122494.D
 Acq: 27 Nov 2020 10:20

Instrument :
 BNA_F
ClientSampled :
 SSTDCCC040

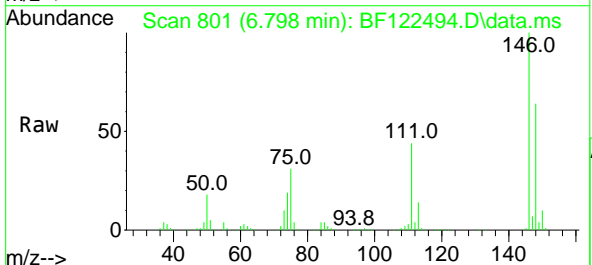


Tgt Ion: 93 Resp: 524700

Ion	Ratio	Lower	Upper
93	100		
63	74.9	62.4	102.4
95	33.4	12.6	52.6

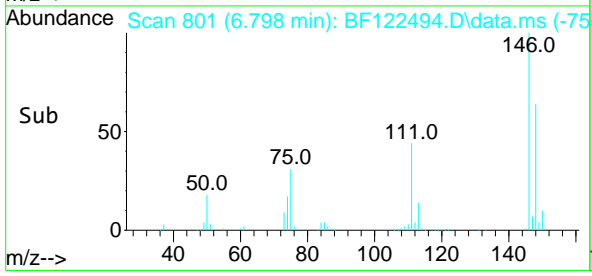
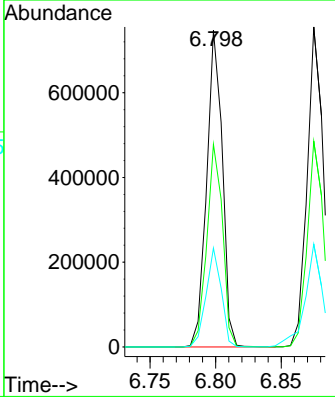


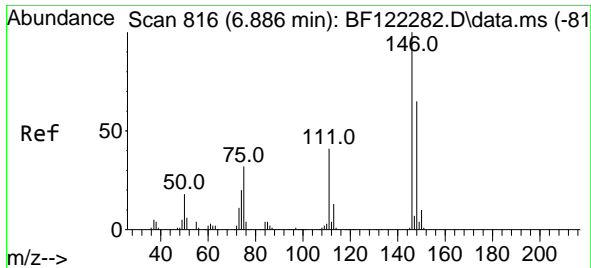
#12
 1,3-Dichlorobenzene
 Concen: 38.44 ng
 RT: 6.798 min Scan# 801
 Delta R.T. -0.000 min
 Lab File: BF122494.D
 Acq: 27 Nov 2020 10:20



Tgt Ion: 146 Resp: 620373

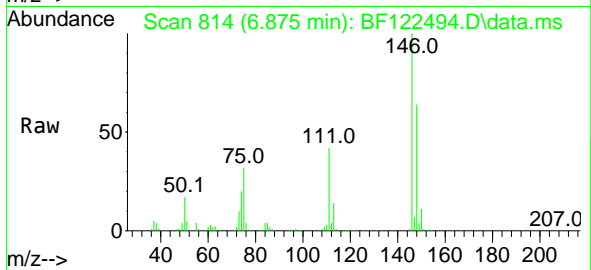
Ion	Ratio	Lower	Upper
146	100		
148	64.0	51.0	76.4
75	31.2	27.6	41.4



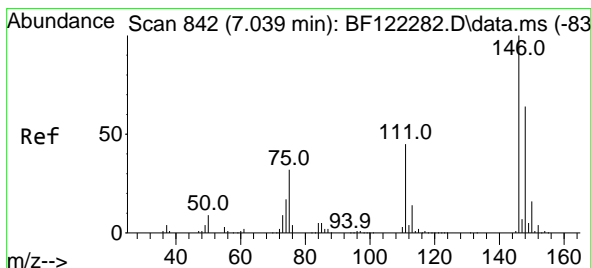
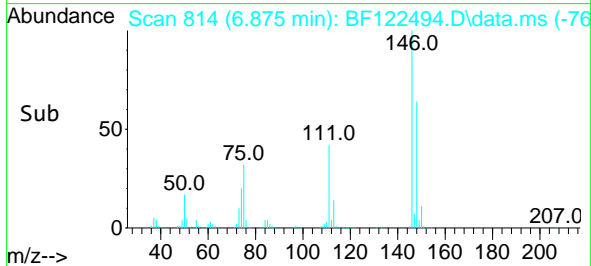
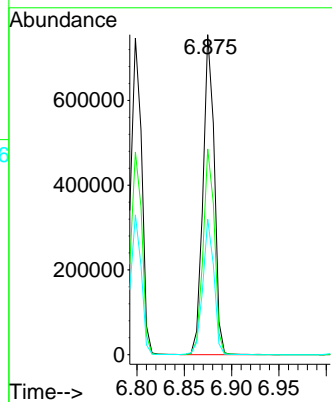


#13
 1,4-Dichlorobenzene
 Concen: 38.84 ng
 RT: 6.875 min Scan# 814
 Delta R.T. -0.000 min
 Lab File: BF122494.D
 Acq: 27 Nov 2020 10:20

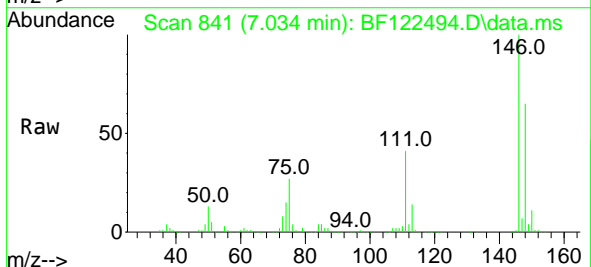
Instrument :
 BNA_F
 ClientSampled :
 SSTDCCC040



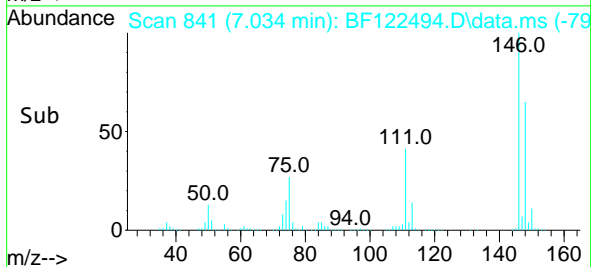
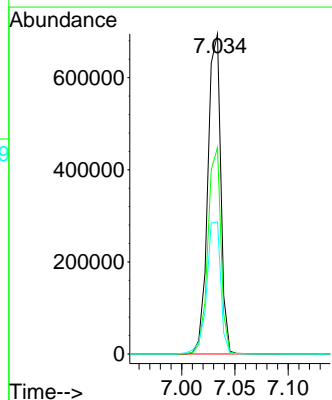
Tgt Ion:146 Resp: 629738
 Ion Ratio Lower Upper
 146 100
 148 64.3 50.1 75.1
 111 42.4 34.6 52.0

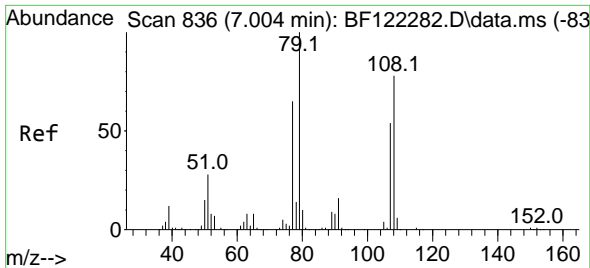


#14
 1,2-Dichlorobenzene
 Concen: 38.96 ng
 RT: 7.034 min Scan# 841
 Delta R.T. -0.000 min
 Lab File: BF122494.D
 Acq: 27 Nov 2020 10:20



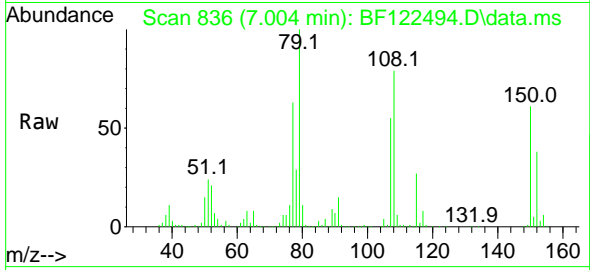
Tgt Ion:146 Resp: 589502
 Ion Ratio Lower Upper
 146 100
 148 64.5 51.1 76.7
 111 41.3 34.2 51.4





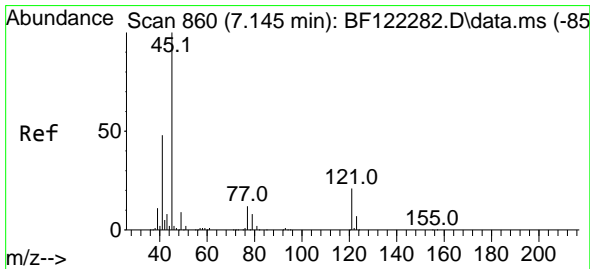
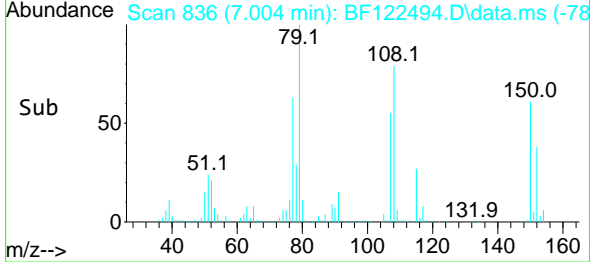
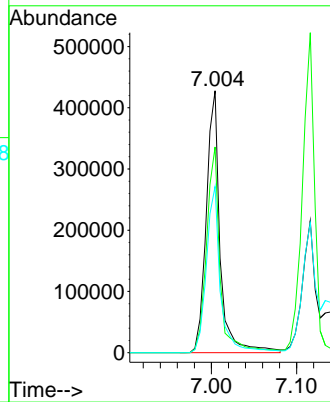
#15
 Benzyl Alcohol
 Concen: 37.83 ng
 RT: 7.004 min Scan# 836
 Delta R.T. -0.000 min
 Lab File: BF122494.D
 Acq: 27 Nov 2020 10:20

Instrument :
 BNA_F
 ClientSampled :
 SSTDCCC040

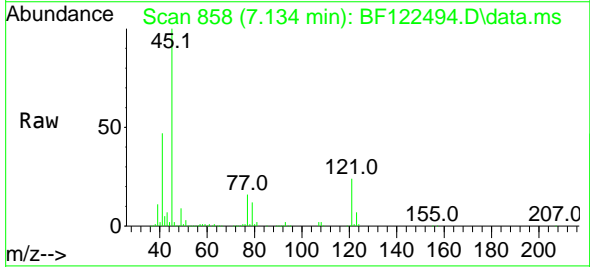


Tgt Ion: 79 Resp: 482323

Ion	Ratio	Lower	Upper
79	100		
108	78.5	62.3	93.5
77	63.4	50.6	75.8

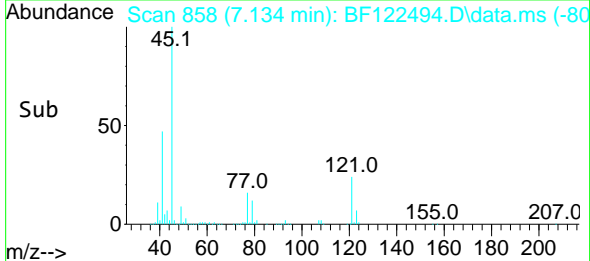
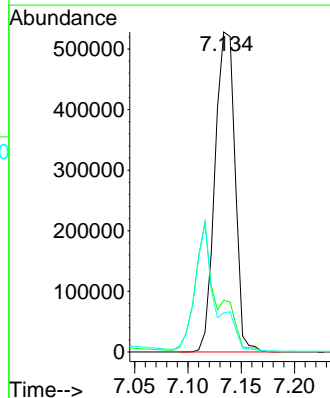


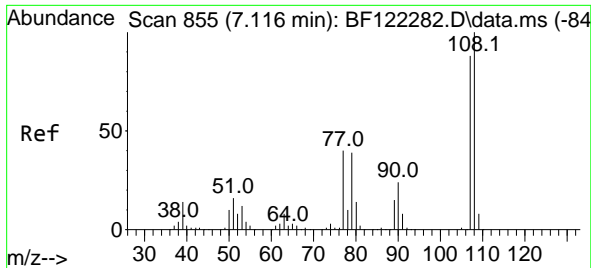
#16
 2,2'-oxybis(1-Chloropropane)
 Concen: 33.64 ng
 RT: 7.134 min Scan# 858
 Delta R.T. -0.000 min
 Lab File: BF122494.D
 Acq: 27 Nov 2020 10:20



Tgt Ion: 45 Resp: 688325

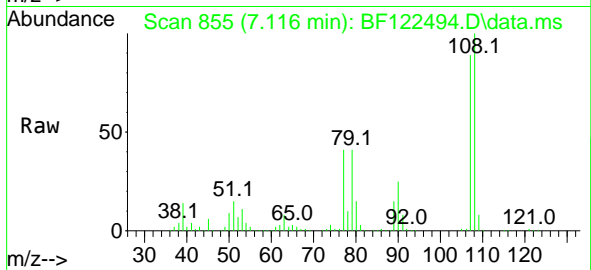
Ion	Ratio	Lower	Upper
45	100		
77	16.1	0.0	33.3
79	12.3	0.0	30.4





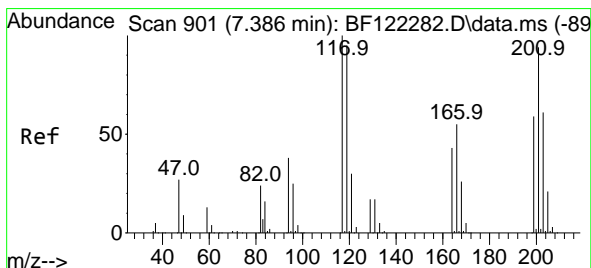
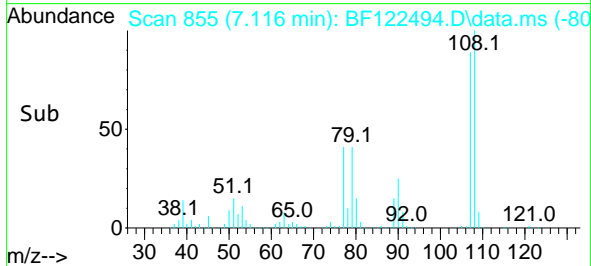
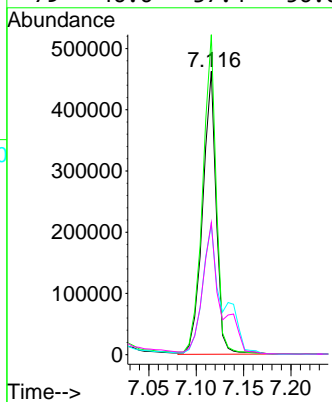
#17
 2-Methylphenol
 Concen: 38.84 ng
 RT: 7.116 min Scan# 855
 Delta R.T. -0.000 min
 Lab File: BF122494.D
 Acq: 27 Nov 2020 10:20

Instrument :
 BNA_F
 ClientSampled :
 SSTDCCC040

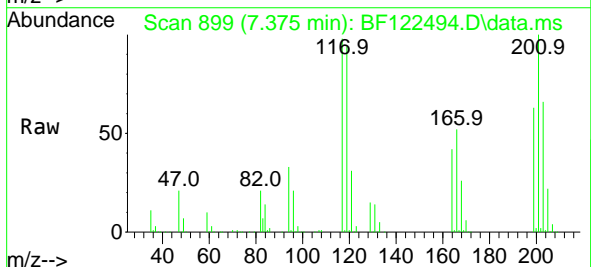


Tgt Ion:107 Resp: 460858

Ion	Ratio	Lower	Upper
107	100		
108	112.9	90.9	136.3
77	45.9	37.5	56.3
79	46.6	37.4	56.0

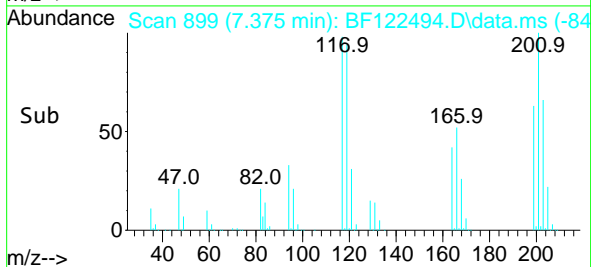
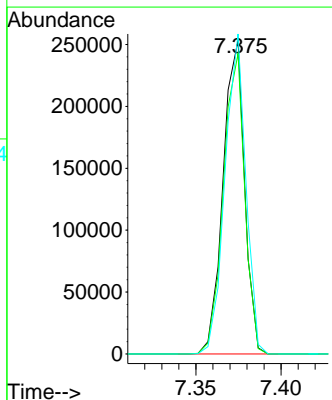


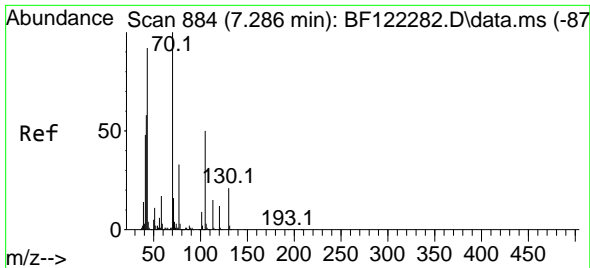
#18
 Hexachloroethane
 Concen: 39.32 ng
 RT: 7.375 min Scan# 899
 Delta R.T. -0.000 min
 Lab File: BF122494.D
 Acq: 27 Nov 2020 10:20



Tgt Ion:117 Resp: 221992

Ion	Ratio	Lower	Upper
117	100		
119	95.8	76.3	114.5
201	102.0	71.8	107.6



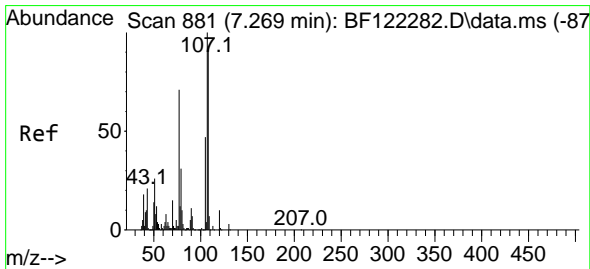
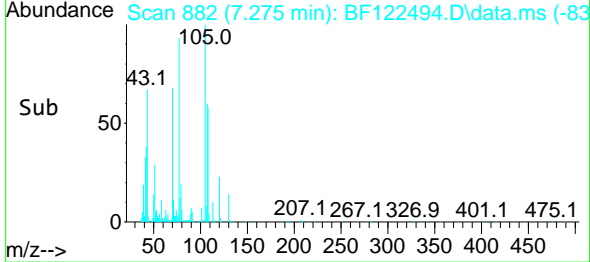
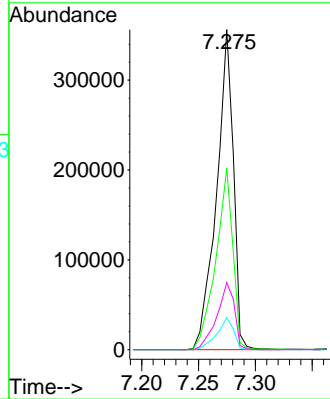
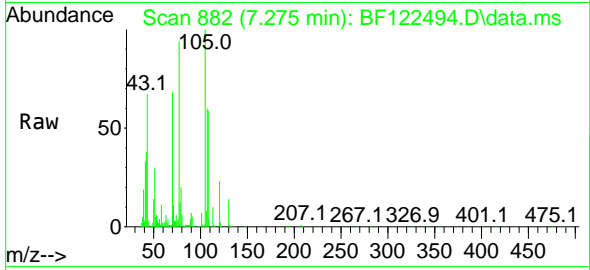


#19
 n-Nitroso-di-n-propylamine
 Concen: 34.37 ng
 RT: 7.275 min Scan# 882
 Delta R.T. -0.006 min
 Lab File: BF122494.D
 Acq: 27 Nov 2020 10:20

Instrument :
 BNA_F
 ClientSampled :
 SSTDCCC040

Tgt Ion: 70 Resp: 368272

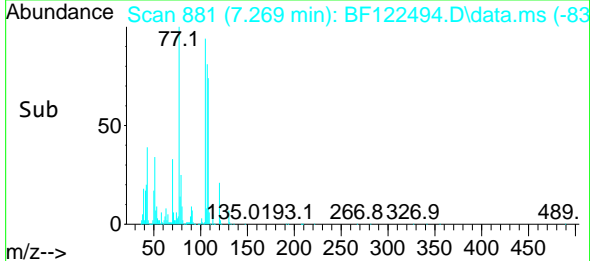
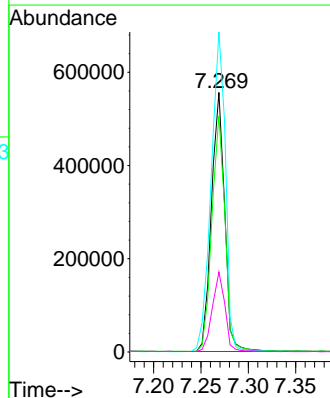
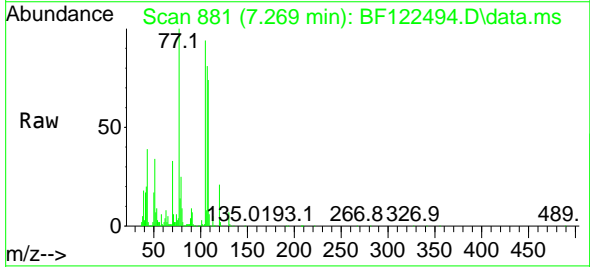
Ion	Ratio	Lower	Upper
70	100		
42	56.7	50.2	75.4
101	10.0	7.5	11.3
130	21.0	15.5	23.3

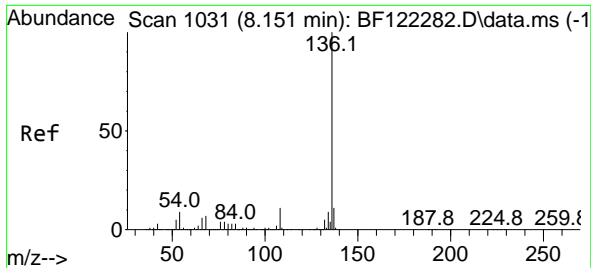


#20
 3+4-Methylphenols
 Concen: 36.87 ng
 RT: 7.269 min Scan# 881
 Delta R.T. -0.000 min
 Lab File: BF122494.D
 Acq: 27 Nov 2020 10:20

Tgt Ion: 107 Resp: 538293

Ion	Ratio	Lower	Upper
107	100		
108	91.0	68.9	108.9
77	123.3	108.0	148.0
79	30.9	10.5	50.5



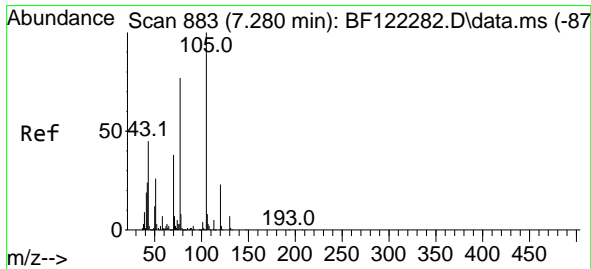
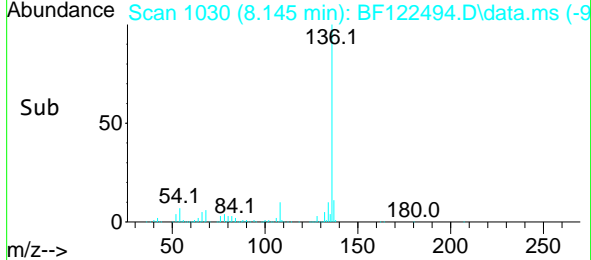
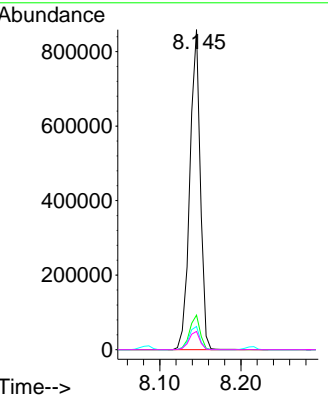
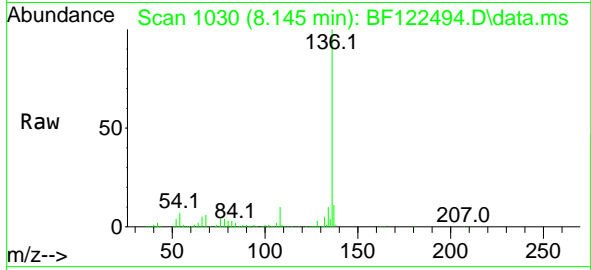


#21
 Naphthalene-d8
 Concen: 20.00 ng
 RT: 8.145 min Scan# 1030
 Delta R.T. -0.000 min
 Lab File: BF122494.D
 Acq: 27 Nov 2020 10:20

Instrument :
 BNA_F
ClientSampled :
 SSTDCCC040

Tgt Ion:136 Resp: 768404

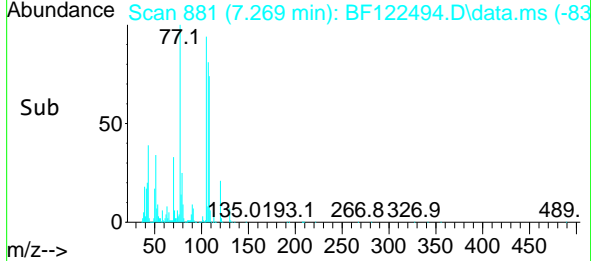
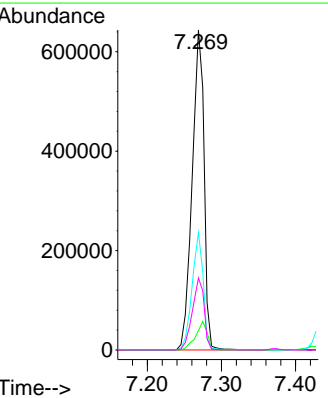
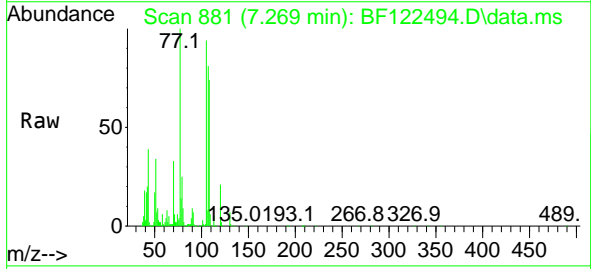
Ion	Ratio	Lower	Upper
136	100		
137	10.8	8.6	13.0
54	7.3	7.1	10.7
68	5.7	5.0	7.4

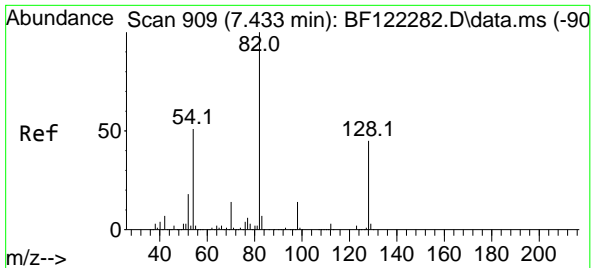


#22
 Acetophenone
 Concen: 35.89 ng
 RT: 7.269 min Scan# 881
 Delta R.T. -0.006 min
 Lab File: BF122494.D
 Acq: 27 Nov 2020 10:20

Tgt Ion:105 Resp: 718293

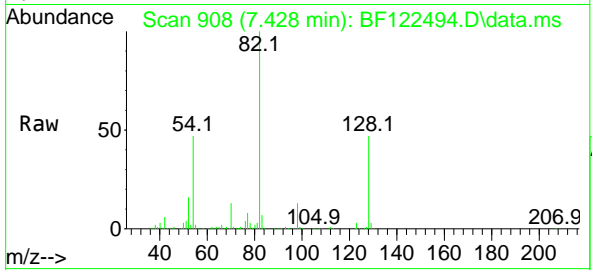
Ion	Ratio	Lower	Upper
105	100		
71	6.1	5.3	7.9
51	36.7	33.2	49.8
120	22.5	17.4	26.0





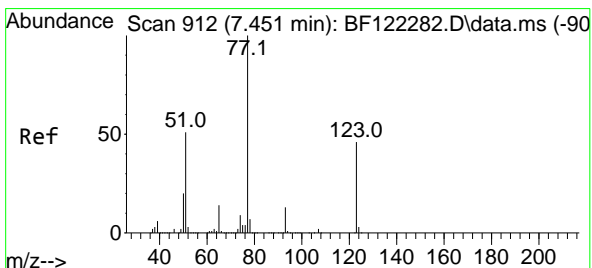
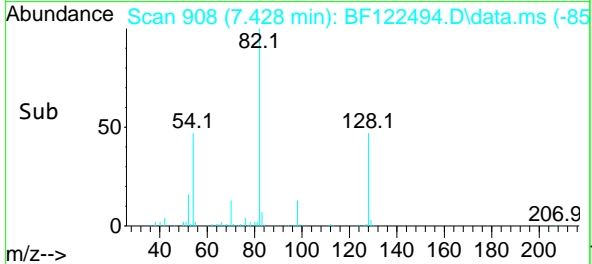
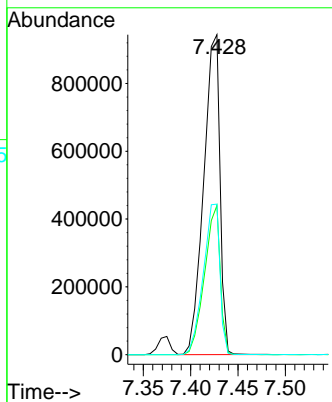
#23
 Nitrobenzene-d5
 Concen: 89.79 ng
 RT: 7.428 min Scan# 908
 Delta R.T. -0.000 min
 Lab File: BF122494.D
 Acq: 27 Nov 2020 10:20

Instrument :
 BNA_F
 ClientSampled :
 SSTDCCC040

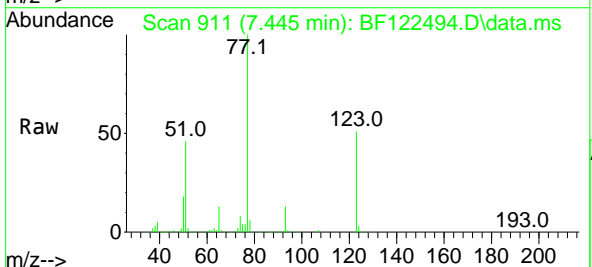


Tgt Ion: 82 Resp: 1126953

Ion	Ratio	Lower	Upper
82	100		
128	46.6	35.0	52.4
54	47.0	43.9	65.9

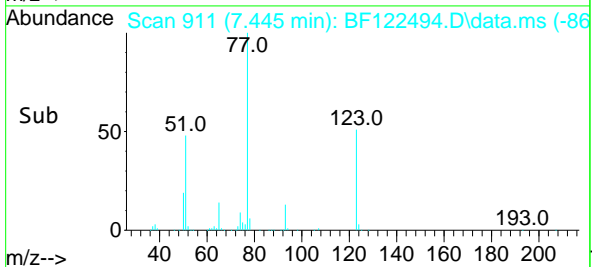
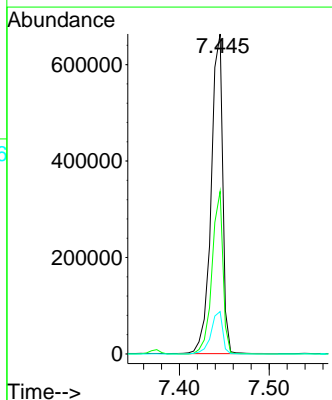


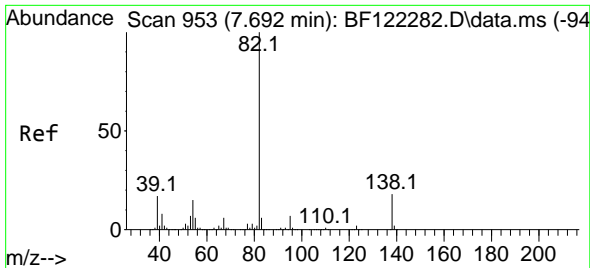
#24
 Nitrobenzene
 Concen: 41.37 ng
 RT: 7.445 min Scan# 911
 Delta R.T. -0.000 min
 Lab File: BF122494.D
 Acq: 27 Nov 2020 10:20



Tgt Ion: 77 Resp: 594055

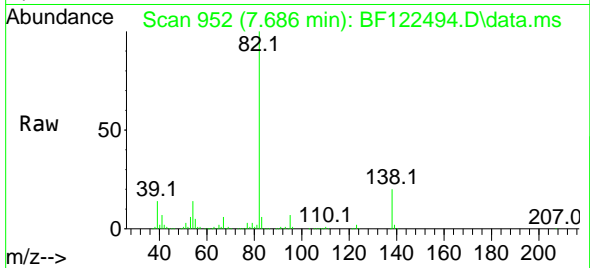
Ion	Ratio	Lower	Upper
77	100		
123	50.8	35.6	53.4
65	13.2	11.2	16.8



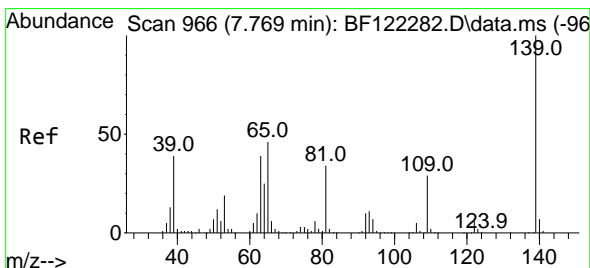
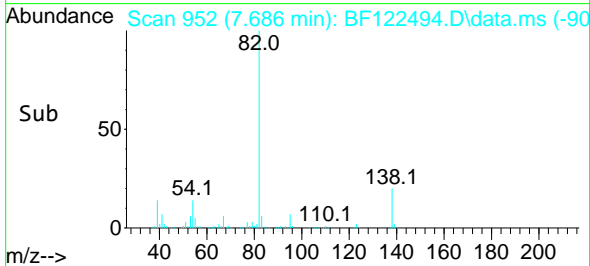
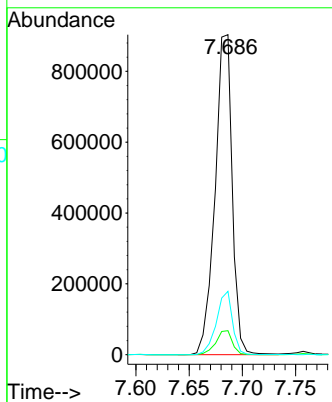


#25
 Isophorone
 Concen: 36.27 ng
 RT: 7.686 min Scan# 952
 Delta R.T. -0.000 min
 Lab File: BF122494.D
 Acq: 27 Nov 2020 10:20

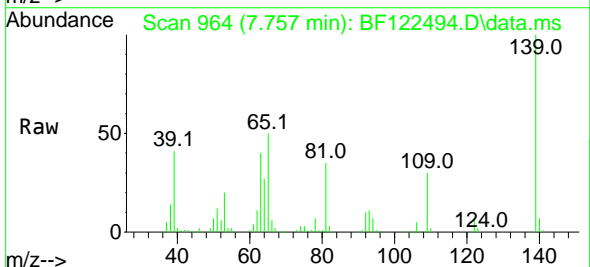
Instrument :
 BNA_F
 ClientSampleId :
 SSTDCCC040



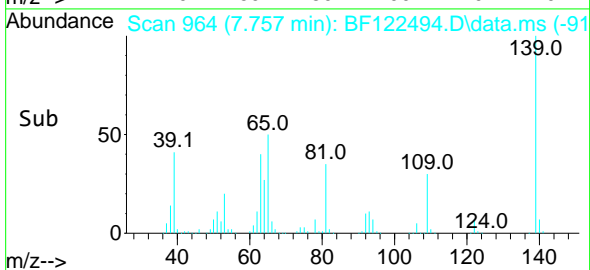
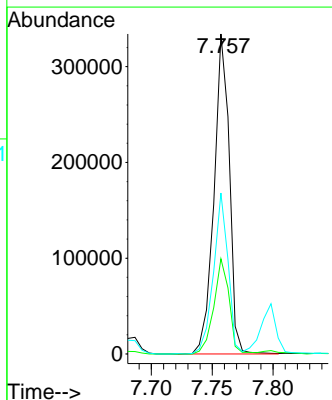
Tgt Ion: 82 Resp: 1014875
 Ion Ratio Lower Upper
 82 100
 95 7.5 5.4 8.0
 138 19.8 13.4 20.0

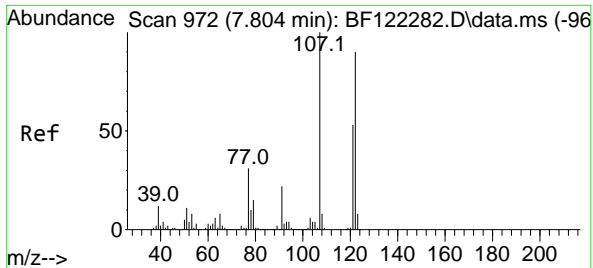


#26
 2-Nitrophenol
 Concen: 47.25 ng
 RT: 7.757 min Scan# 964
 Delta R.T. -0.000 min
 Lab File: BF122494.D
 Acq: 27 Nov 2020 10:20



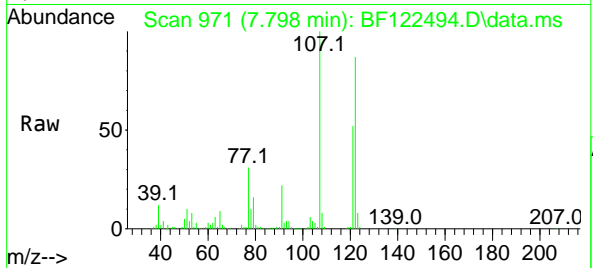
Tgt Ion: 139 Resp: 293815
 Ion Ratio Lower Upper
 139 100
 109 29.8 23.0 34.4
 65 50.3 39.9 59.9



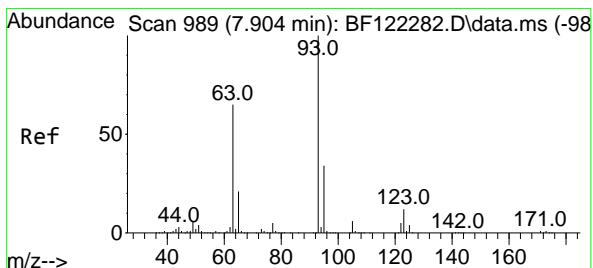
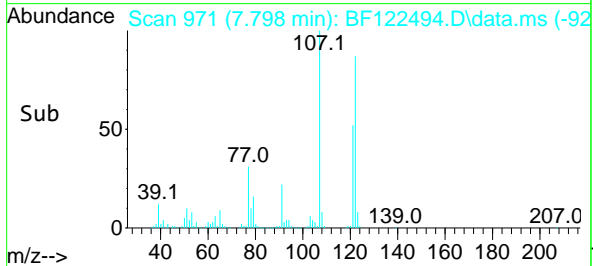
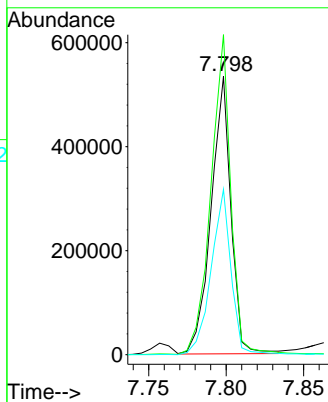


#27
 2,4-Dimethylphenol
 Concen: 36.06 ng
 RT: 7.798 min Scan# 971
 Delta R.T. -0.000 min
 Lab File: BF122494.D
 Acq: 27 Nov 2020 10:20

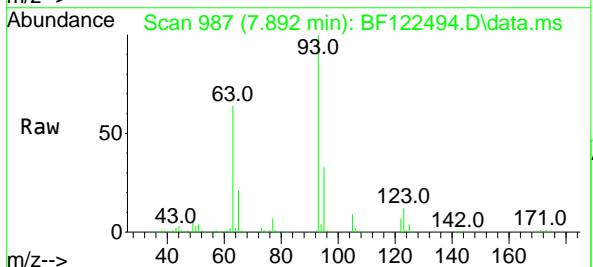
Instrument :
 BNA_F
 ClientSampleId :
 SSTDCCC040



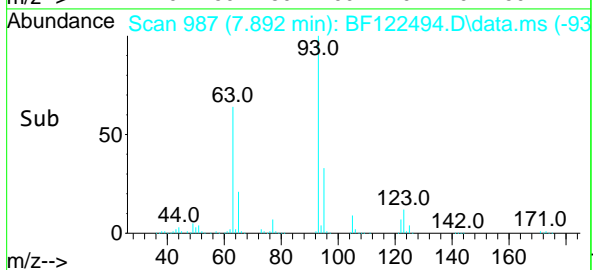
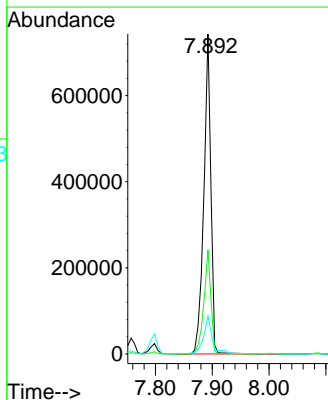
Tgt Ion:122 Resp: 475935
 Ion Ratio Lower Upper
 122 100
 107 114.9 90.8 136.2
 121 59.4 47.5 71.3

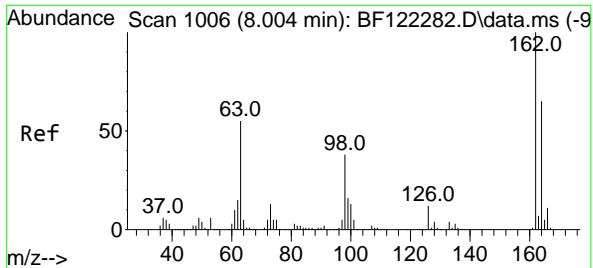


#28
 bis(2-Chloroethoxy)methane
 Concen: 37.36 ng
 RT: 7.892 min Scan# 987
 Delta R.T. -0.000 min
 Lab File: BF122494.D
 Acq: 27 Nov 2020 10:20



Tgt Ion: 93 Resp: 639463
 Ion Ratio Lower Upper
 93 100
 95 32.6 26.2 39.4
 123 11.8 8.8 13.2



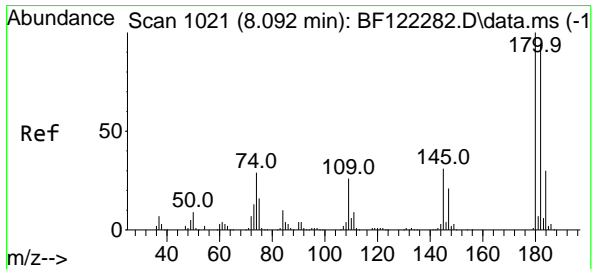
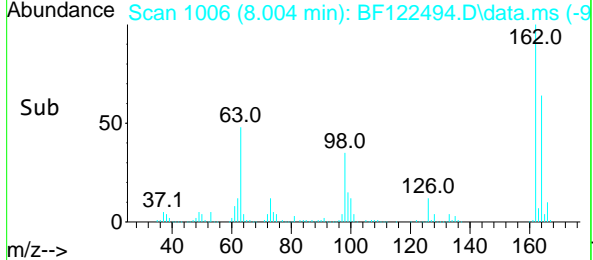
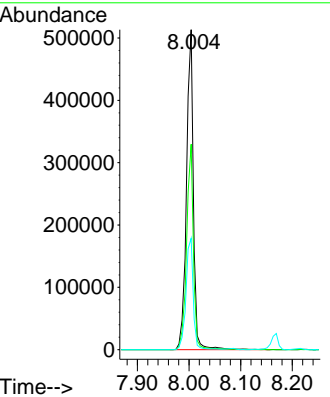
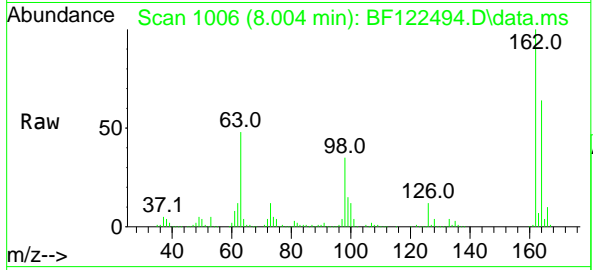


#29
 2,4-Dichlorophenol
 Concen: 40.82 ng
 RT: 8.004 min Scan# 1006
 Delta R.T. -0.000 min
 Lab File: BF122494.D
 Acq: 27 Nov 2020 10:20

Instrument :
 BNA_F
ClientSampled :
 SSTDCCC040

Tgt Ion:162 Resp: 476996

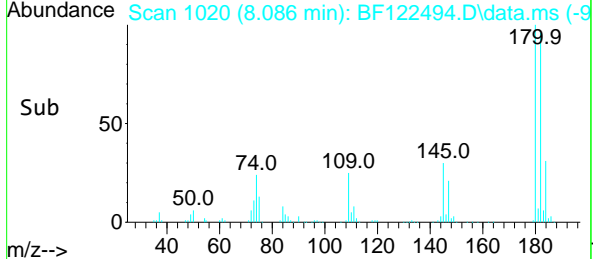
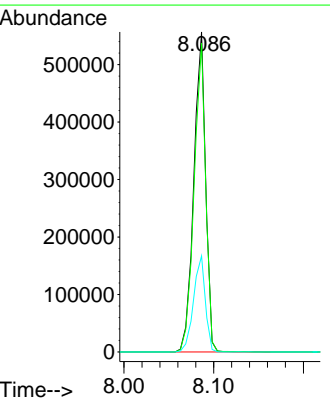
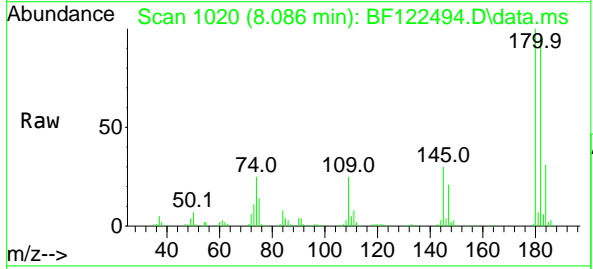
Ion	Ratio	Lower	Upper
162	100		
164	64.2	42.5	82.5
98	34.8	20.1	60.1

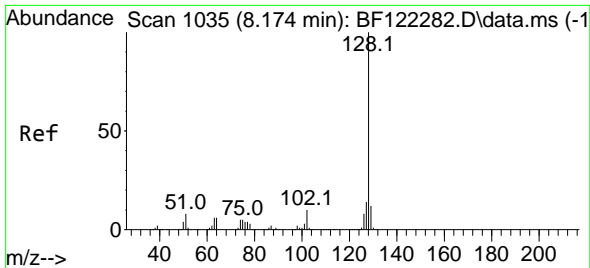


#30
 1,2,4-Trichlorobenzene
 Concen: 39.44 ng
 RT: 8.086 min Scan# 1020
 Delta R.T. -0.000 min
 Lab File: BF122494.D
 Acq: 27 Nov 2020 10:20

Tgt Ion:180 Resp: 508640

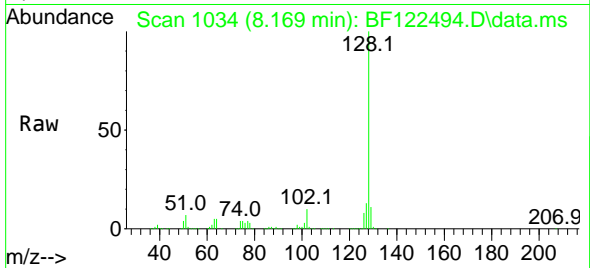
Ion	Ratio	Lower	Upper
180	100		
182	96.5	79.4	119.2
145	30.0	25.5	38.3



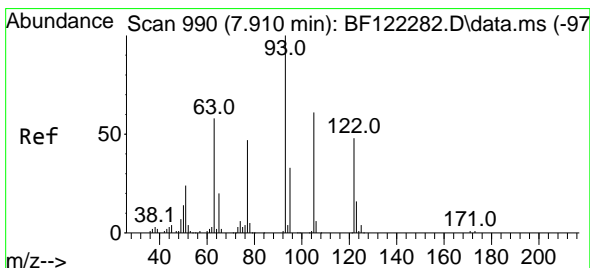
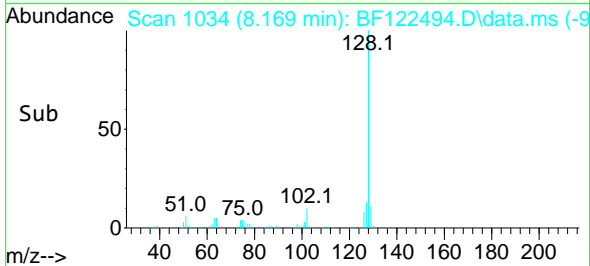
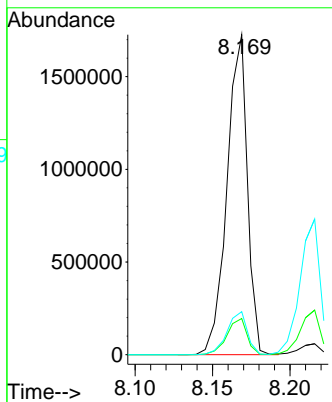


#31
 Naphthalene
 Concen: 38.62 ng
 RT: 8.169 min Scan# 1034
 Delta R.T. -0.000 min
 Lab File: BF122494.D
 Acq: 27 Nov 2020 10:20

Instrument :
 BNA_F
 ClientSampled :
 SSTDCCC040

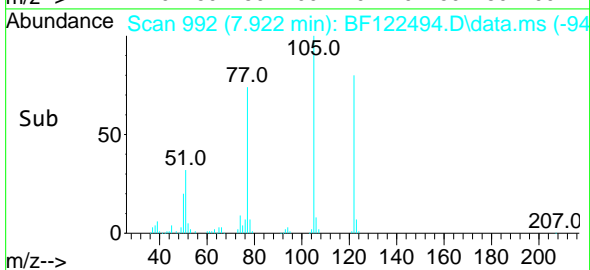
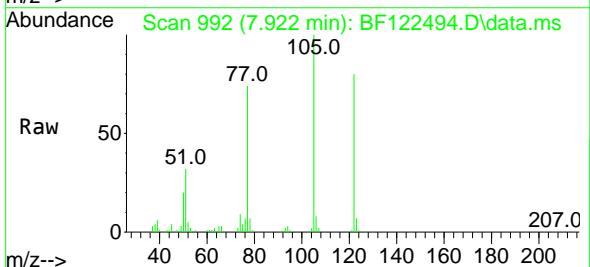
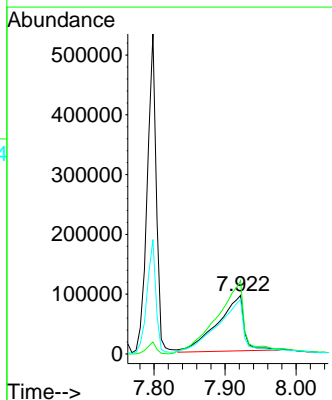


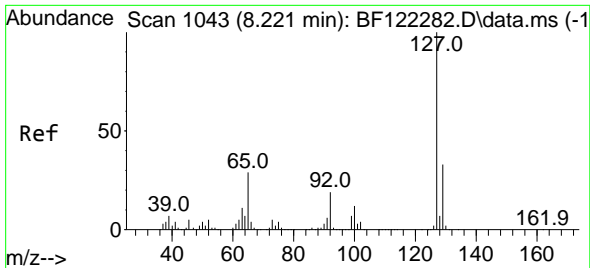
Tgt Ion:128 Resp: 1577719
 Ion Ratio Lower Upper
 128 100
 129 11.3 8.7 13.1
 127 13.5 10.8 16.2



#32
 Benzoic acid
 Concen: 35.85 ng
 RT: 7.922 min Scan# 992
 Delta R.T. -0.012 min
 Lab File: BF122494.D
 Acq: 27 Nov 2020 10:20

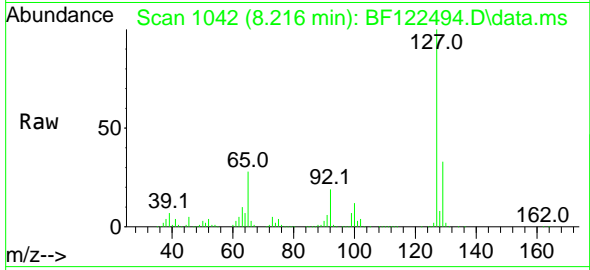
Tgt Ion:122 Resp: 244304
 Ion Ratio Lower Upper
 122 100
 105 125.2 103.3 143.3
 77 93.2 73.9 113.9





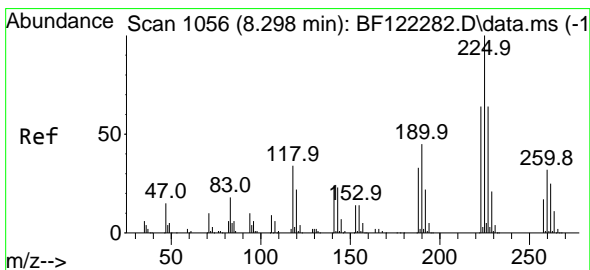
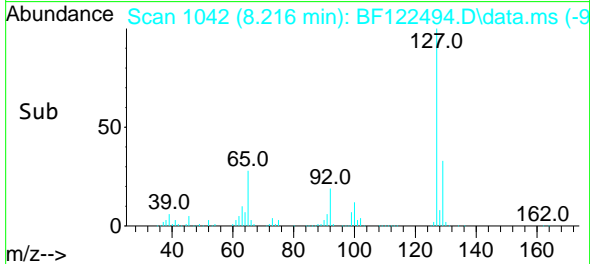
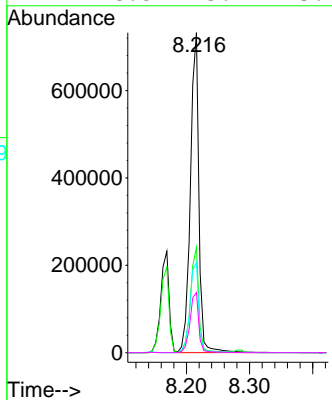
#33
 4-Chloroaniline
 Concen: 38.63 ng
 RT: 8.216 min Scan# 1042
 Delta R.T. -0.000 min
 Lab File: BF122494.D
 Acq: 27 Nov 2020 10:20

Instrument :
 BNA_F
 ClientSampleId :
 SSTDCCC040



Tgt Ion:127 Resp: 687326

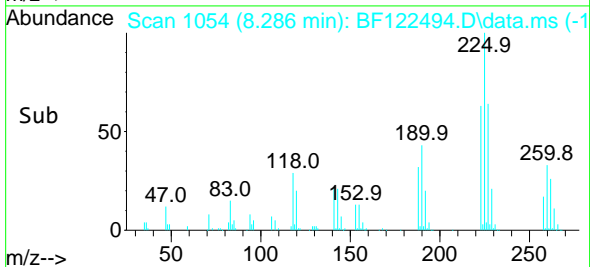
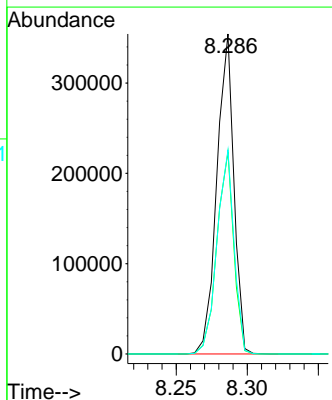
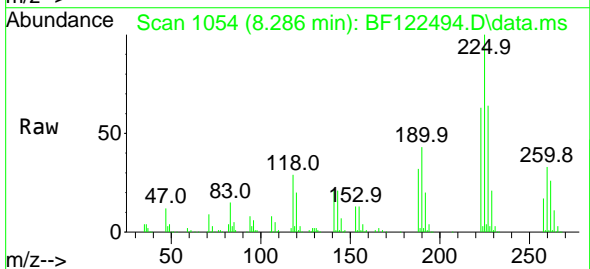
Ion	Ratio	Lower	Upper
127	100		
129	32.9	26.3	39.5
65	28.3	26.2	39.2
92	18.8	15.9	23.9

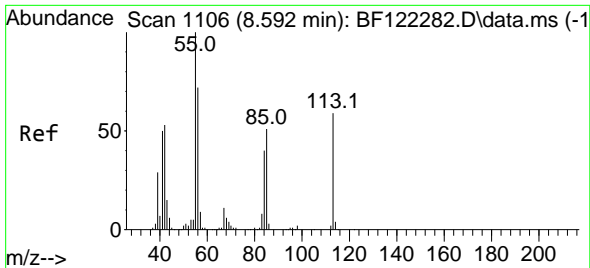


#34
 Hexachlorobutadiene
 Concen: 39.81 ng
 RT: 8.286 min Scan# 1054
 Delta R.T. -0.000 min
 Lab File: BF122494.D
 Acq: 27 Nov 2020 10:20

Tgt Ion:225 Resp: 295086

Ion	Ratio	Lower	Upper
225	100		
223	63.1	51.1	76.7
227	63.7	51.0	76.6

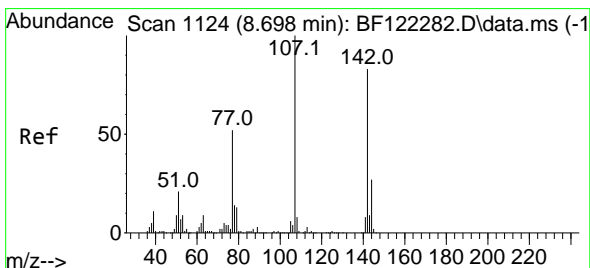
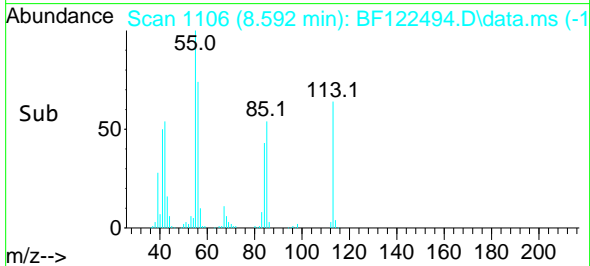
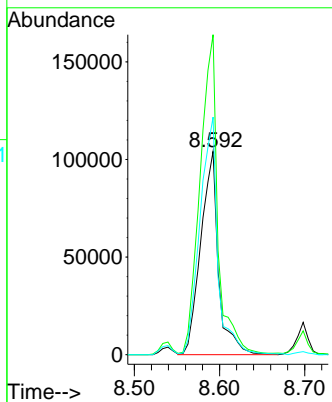
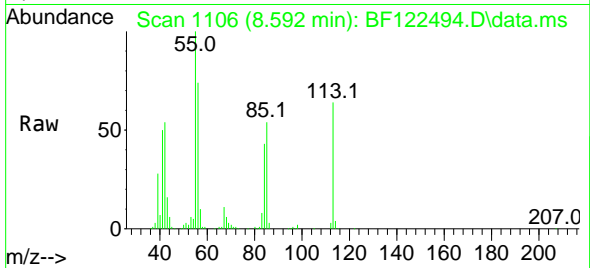




#35
 Caprolactam
 Concen: 40.77 ng
 RT: 8.592 min Scan# 1106
 Delta R.T. -0.006 min
 Lab File: BF122494.D
 Acq: 27 Nov 2020 10:20

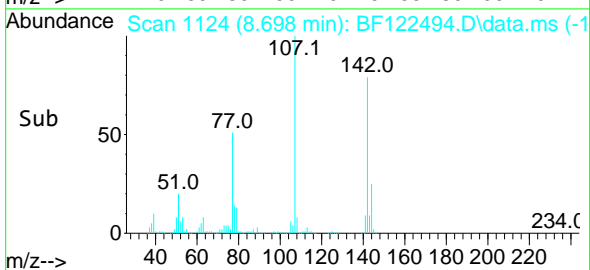
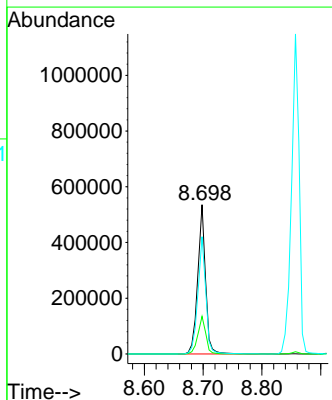
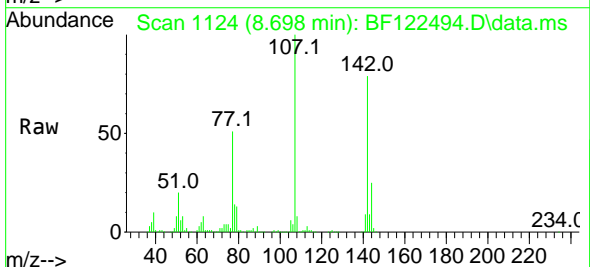
Instrument :
 BNA_F
 ClientSampleId :
 SSTDCCC040

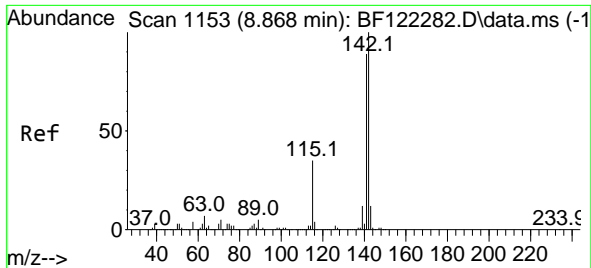
Tgt Ion:113 Resp: 150988
 Ion Ratio Lower Upper
 113 100
 55 157.4 167.5 207.5#
 56 116.9 121.2 161.2#



#36
 4-Chloro-3-methylphenol
 Concen: 40.68 ng
 RT: 8.698 min Scan# 1124
 Delta R.T. -0.000 min
 Lab File: BF122494.D
 Acq: 27 Nov 2020 10:20

Tgt Ion:107 Resp: 495753
 Ion Ratio Lower Upper
 107 100
 144 25.2 20.1 30.1
 142 78.5 59.3 88.9



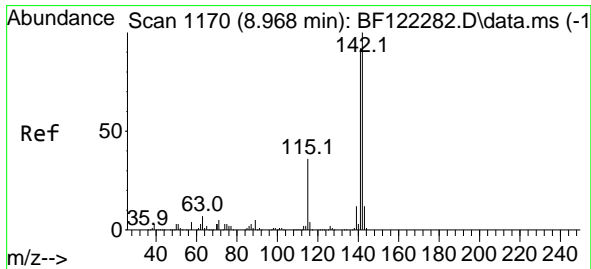
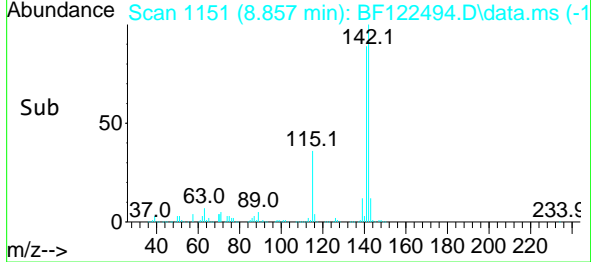
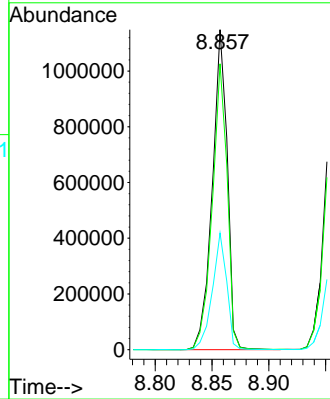
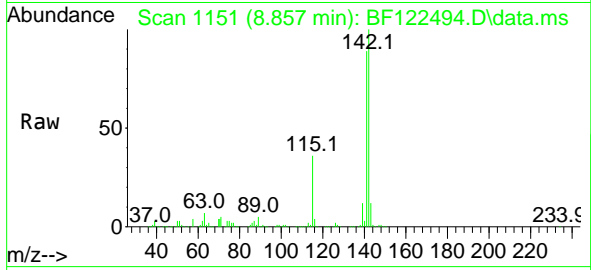


#37
 2-Methylnaphthalene
 Concen: 38.82 ng
 RT: 8.857 min Scan# 1151
 Delta R.T. -0.000 min
 Lab File: BF122494.D
 Acq: 27 Nov 2020 10:20

Instrument :
 BNA_F
 ClientSampleId :
 SSTDCCC040

Tgt Ion:142 Resp: 1047692

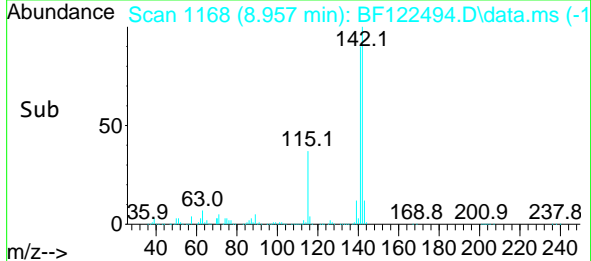
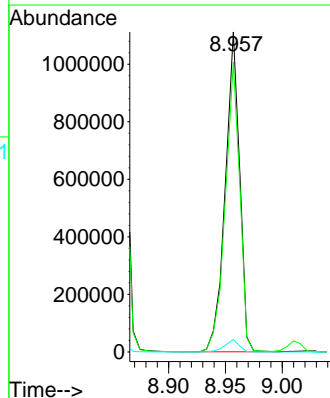
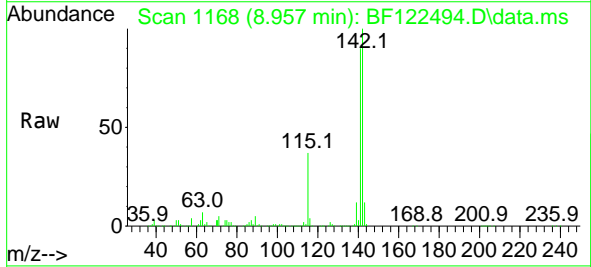
Ion	Ratio	Lower	Upper
142	100		
141	89.4	70.2	105.4
115	36.4	28.6	43.0

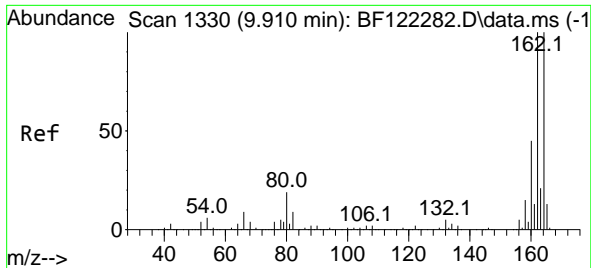


#38
 1-Methylnaphthalene
 Concen: 38.80 ng
 RT: 8.957 min Scan# 1168
 Delta R.T. -0.000 min
 Lab File: BF122494.D
 Acq: 27 Nov 2020 10:20

Tgt Ion:142 Resp: 980241

Ion	Ratio	Lower	Upper
142	100		
141	90.5	74.5	111.7
116	3.9	3.2	4.8



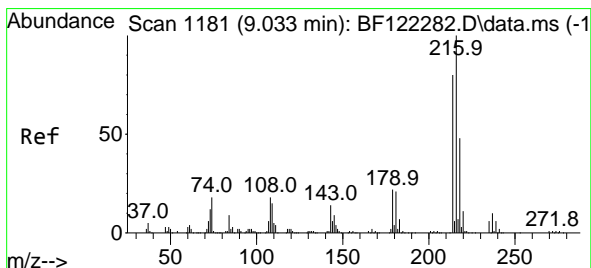
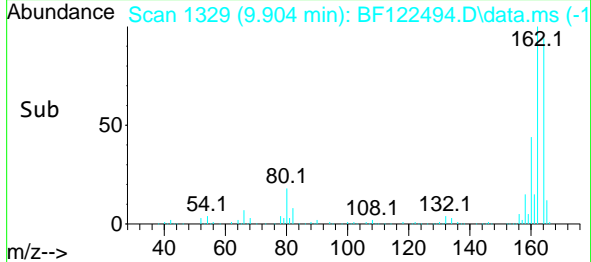
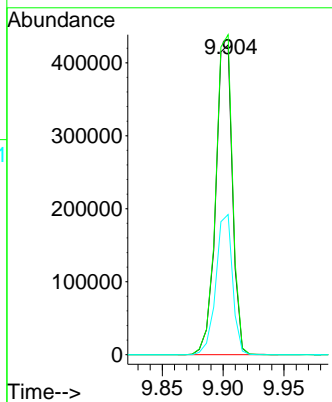
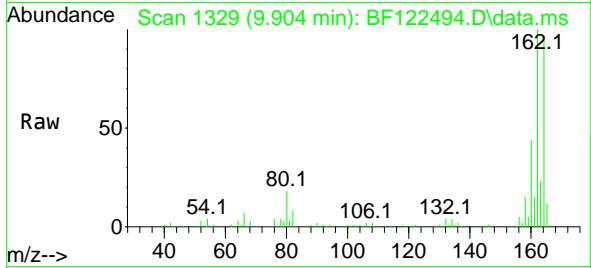


#39
 Acenaphthene-d10
 Concen: 20.00 ng
 RT: 9.904 min Scan# 1329
 Delta R.T. -0.000 min
 Lab File: BF122494.D
 Acq: 27 Nov 2020 10:20

Instrument :
 BNA_F
 ClientSampled :
 SSTDCCC040

Tgt Ion:164 Resp: 406942

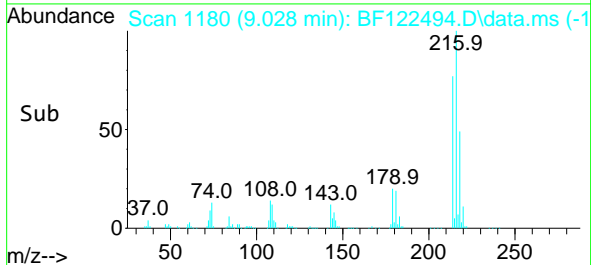
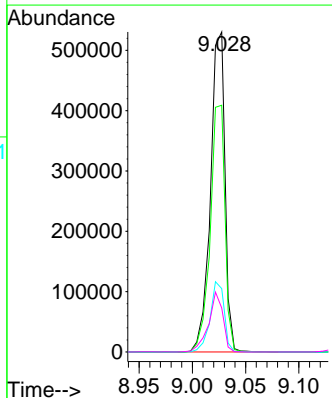
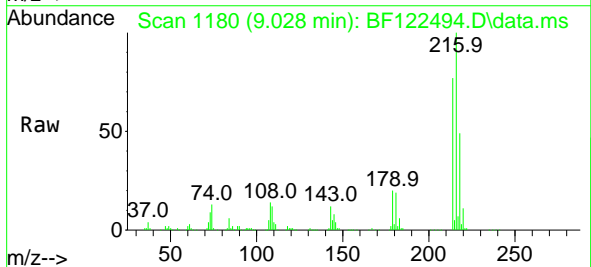
Ion	Ratio	Lower	Upper
164	100		
162	103.3	83.2	124.8
160	45.2	37.5	56.3

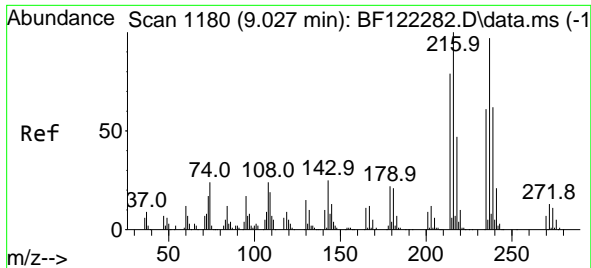


#40
 1,2,4,5-Tetrachlorobenzene
 Concen: 40.04 ng
 RT: 9.028 min Scan# 1180
 Delta R.T. -0.000 min
 Lab File: BF122494.D
 Acq: 27 Nov 2020 10:20

Tgt Ion:216 Resp: 502037

Ion	Ratio	Lower	Upper
216	100		
214	78.5	63.4	95.2
179	21.3	17.0	25.6
108	18.5	15.5	23.3



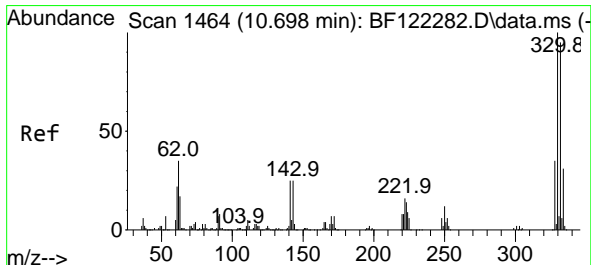
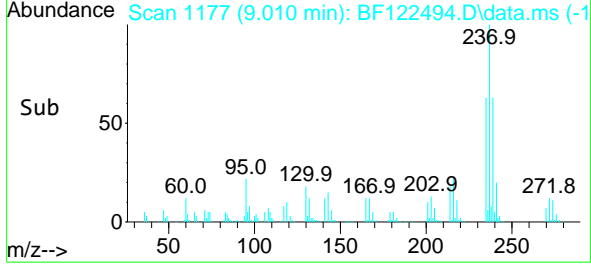
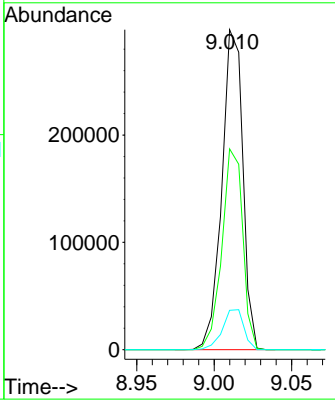
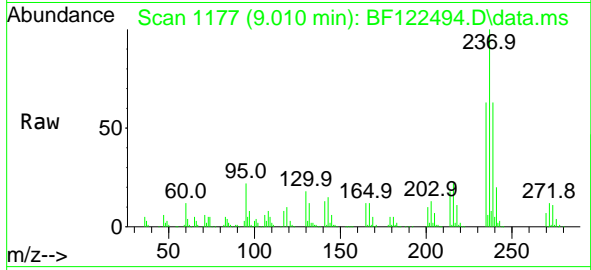


#41
 Hexachlorocyclopentadiene
 Concen: 38.20 ng
 RT: 9.010 min Scan# 1177
 Delta R.T. -0.006 min
 Lab File: BF122494.D
 Acq: 27 Nov 2020 10:20

Instrument :
 BNA_F
ClientSampled :
 SSTDCCC040

Tgt Ion:237 Resp: 280108

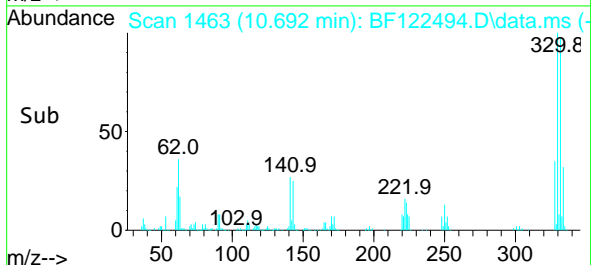
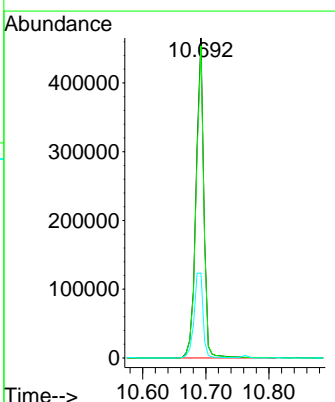
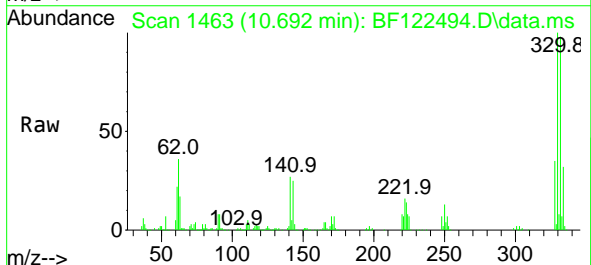
Ion	Ratio	Lower	Upper
237	100		
235	62.8	41.8	81.8
272	12.3	0.0	33.5

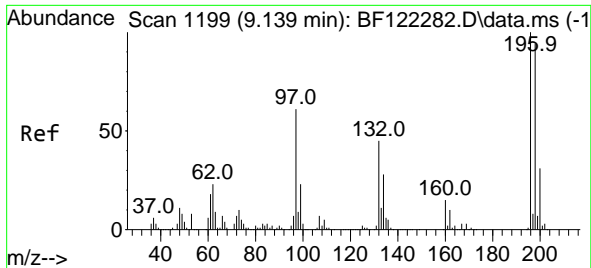


#42
 2,4,6-Tribromophenol
 Concen: 90.68 ng
 RT: 10.692 min Scan# 1463
 Delta R.T. -0.000 min
 Lab File: BF122494.D
 Acq: 27 Nov 2020 10:20

Tgt Ion:330 Resp: 396049

Ion	Ratio	Lower	Upper
330	100		
332	97.0	77.3	115.9
141	30.7	22.3	33.5

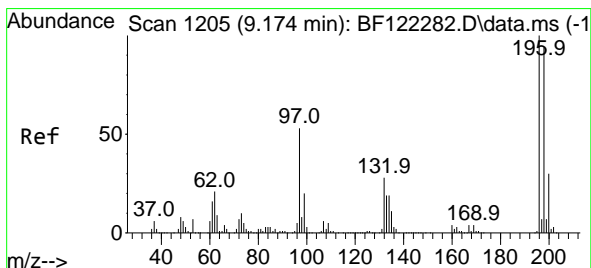
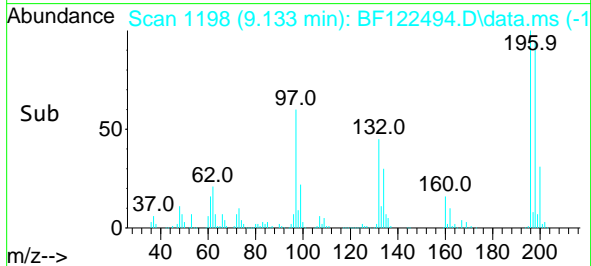
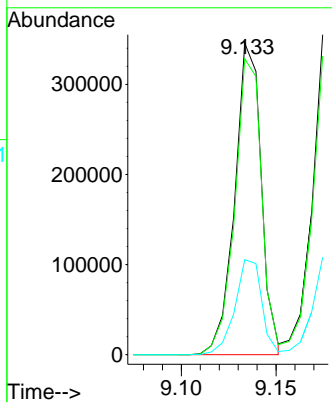
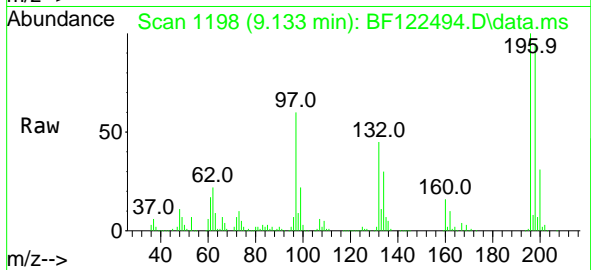




#43
 2,4,6-Trichlorophenol
 Concen: 41.18 ng
 RT: 9.133 min Scan# 1198
 Delta R.T. -0.006 min
 Lab File: BF122494.D
 Acq: 27 Nov 2020 10:20

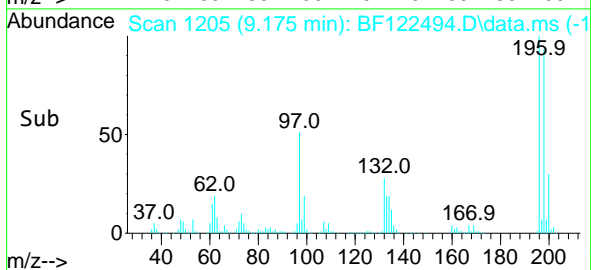
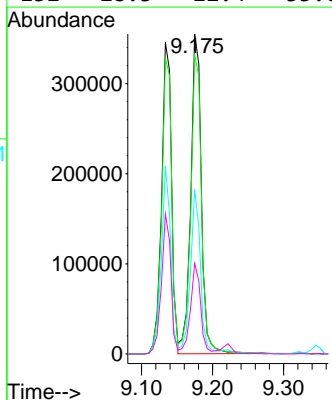
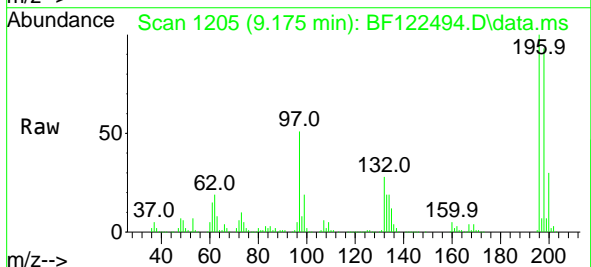
Instrument :
 BNA_F
 ClientSampled :
 SSTDCCC040

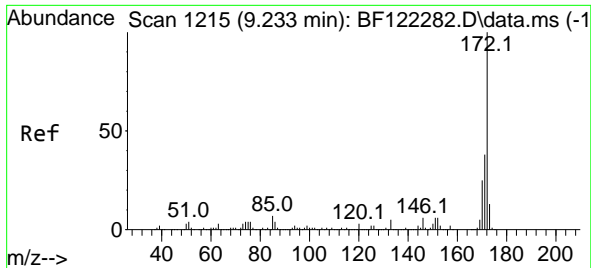
Tgt Ion:196 Resp: 335389
 Ion Ratio Lower Upper
 196 100
 198 95.0 75.8 113.6
 200 30.5 24.6 36.8



#44
 2,4,5-Trichlorophenol
 Concen: 43.38 ng
 RT: 9.175 min Scan# 1205
 Delta R.T. -0.006 min
 Lab File: BF122494.D
 Acq: 27 Nov 2020 10:20

Tgt Ion:196 Resp: 370377
 Ion Ratio Lower Upper
 196 100
 198 93.4 76.1 114.1
 97 51.4 41.0 61.6
 132 28.3 22.4 33.6

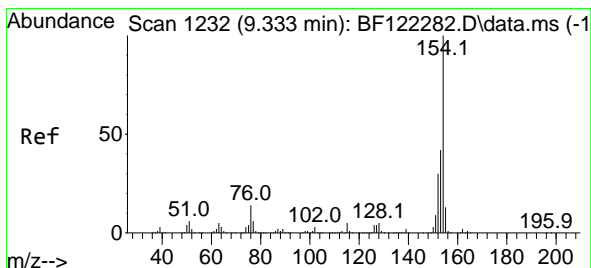
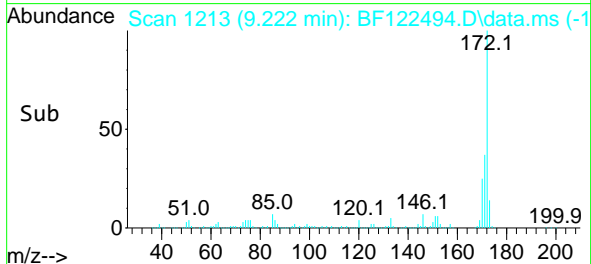
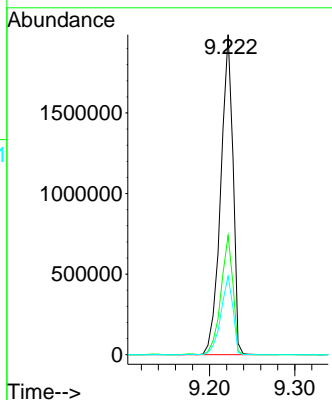
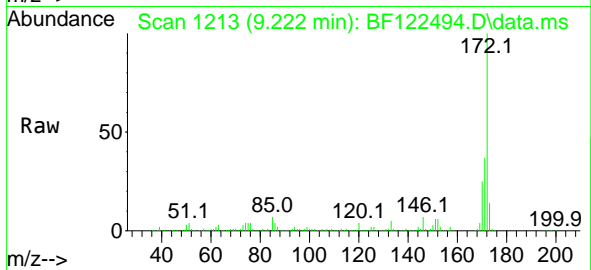




#45
 2-Fluorobiphenyl
 Concen: 76.19 ng
 RT: 9.222 min Scan# 1213
 Delta R.T. -0.000 min
 Lab File: BF122494.D
 Acq: 27 Nov 2020 10:20

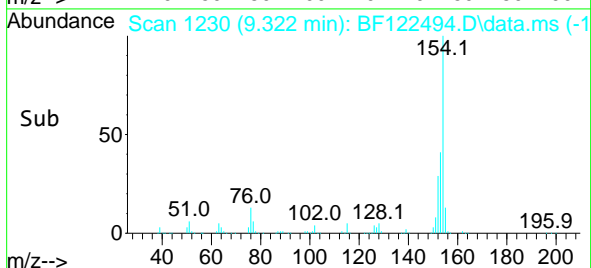
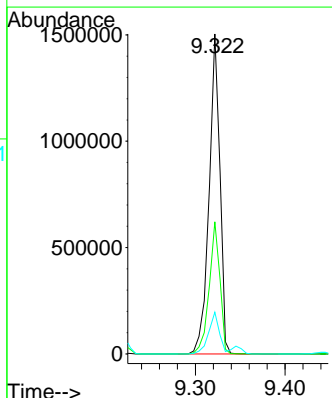
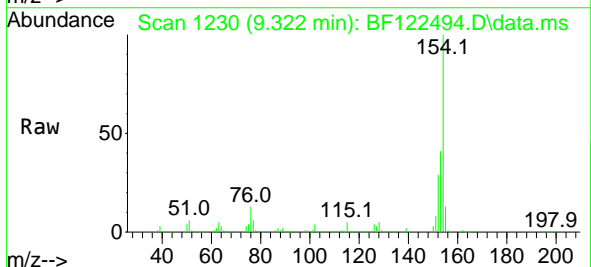
Instrument :
 BNA_F
 ClientSampled :
 SSTDCCC040

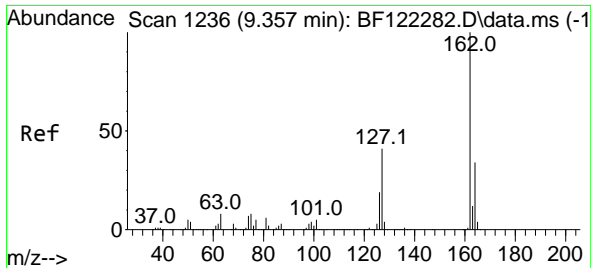
Tgt Ion:172 Resp: 1984298
 Ion Ratio Lower Upper
 172 100
 171 37.3 29.1 43.7
 170 24.6 19.8 29.6



#46
 1,1'-Biphenyl
 Concen: 38.87 ng
 RT: 9.322 min Scan# 1230
 Delta R.T. -0.000 min
 Lab File: BF122494.D
 Acq: 27 Nov 2020 10:20

Tgt Ion:154 Resp: 1259234
 Ion Ratio Lower Upper
 154 100
 153 41.3 21.3 61.3
 76 13.0 0.0 34.7



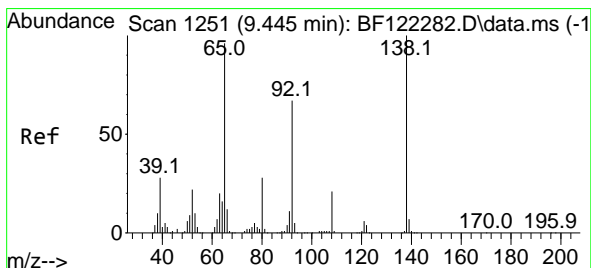
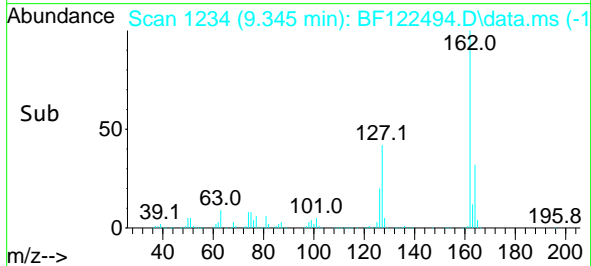
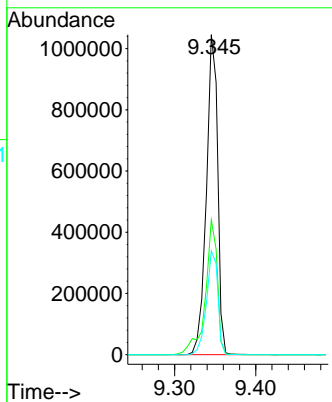
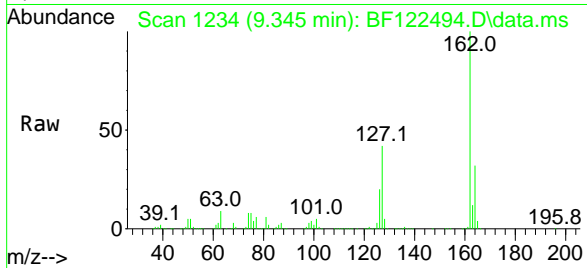


#47
 2-Chloronaphthalene
 Concen: 39.17 ng
 RT: 9.345 min Scan# 1234
 Delta R.T. -0.006 min
 Lab File: BF122494.D
 Acq: 27 Nov 2020 10:20

Instrument :
 BNA_F
 ClientSampled :
 SSTDCCC040

Tgt Ion:162 Resp: 1007055

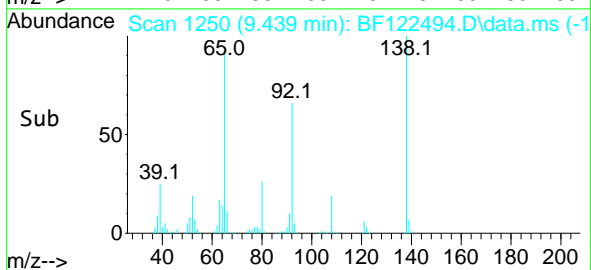
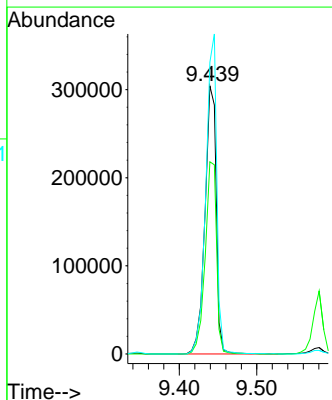
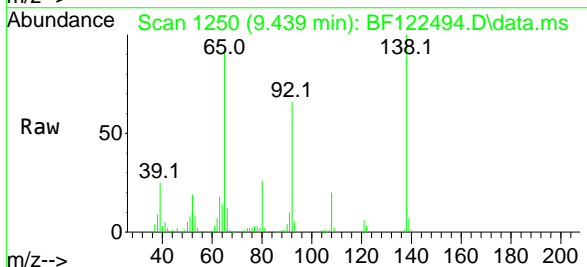
Ion	Ratio	Lower	Upper
162	100		
127	42.1	34.4	51.6
164	32.4	26.3	39.5

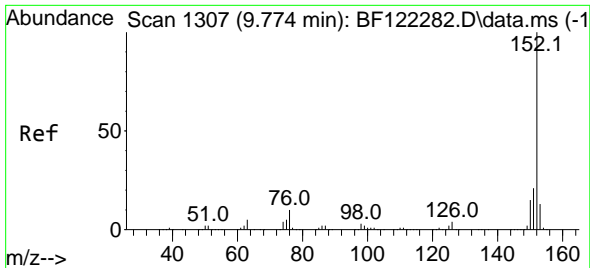


#48
 2-Nitroaniline
 Concen: 41.14 ng
 RT: 9.439 min Scan# 1250
 Delta R.T. -0.006 min
 Lab File: BF122494.D
 Acq: 27 Nov 2020 10:20

Tgt Ion: 65 Resp: 308779

Ion	Ratio	Lower	Upper
65	100		
92	71.7	55.1	82.7
138	108.8	80.5	120.7



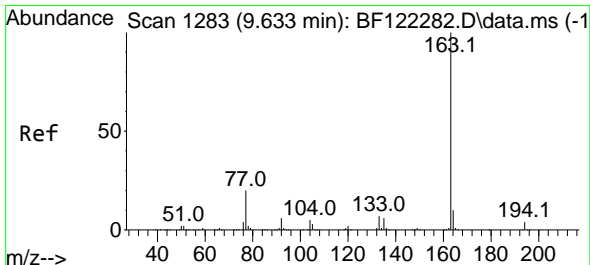
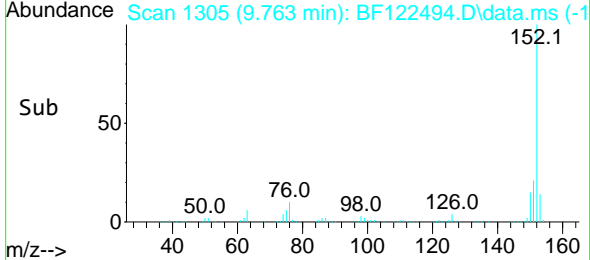
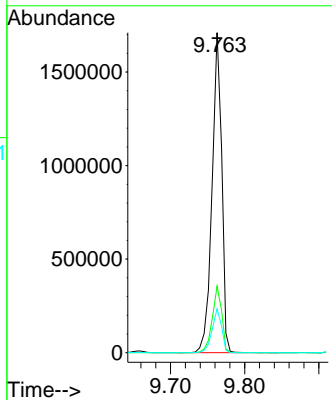
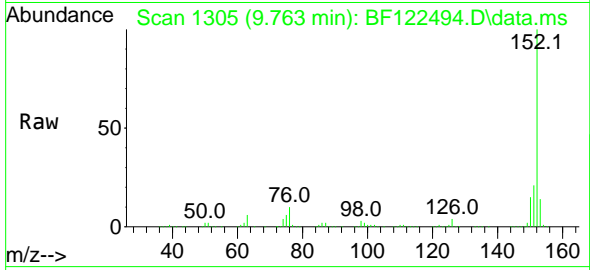


#49
 Acenaphthylene
 Concen: 39.19 ng
 RT: 9.763 min Scan# 1305
 Delta R.T. -0.000 min
 Lab File: BF122494.D
 Acq: 27 Nov 2020 10:20

Instrument :
 BNA_F
ClientSampled :
 SSTDCCC040

Tgt Ion:152 Resp: 1548532

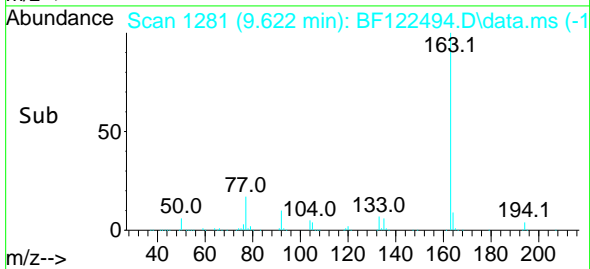
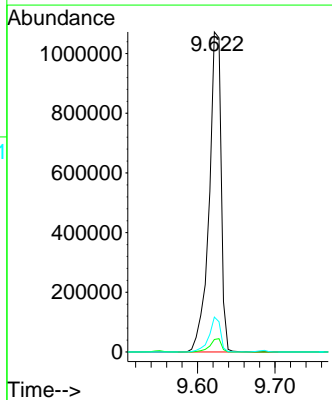
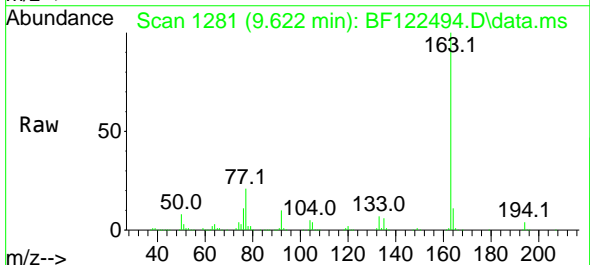
Ion	Ratio	Lower	Upper
152	100		
151	20.8	16.4	24.6
153	13.7	10.6	15.8

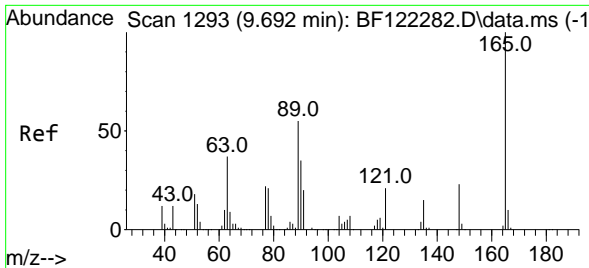


#50
 Dimethylphthalate
 Concen: 39.74 ng
 RT: 9.622 min Scan# 1281
 Delta R.T. -0.006 min
 Lab File: BF122494.D
 Acq: 27 Nov 2020 10:20

Tgt Ion:163 Resp: 1149599

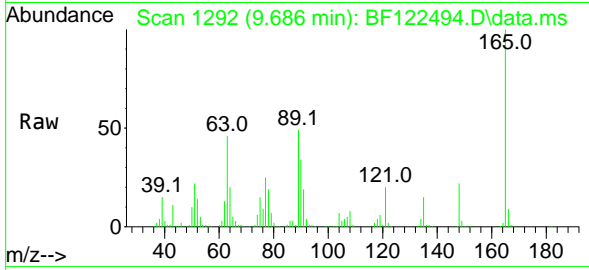
Ion	Ratio	Lower	Upper
163	100		
194	3.9	3.3	4.9
164	10.9	8.2	12.4



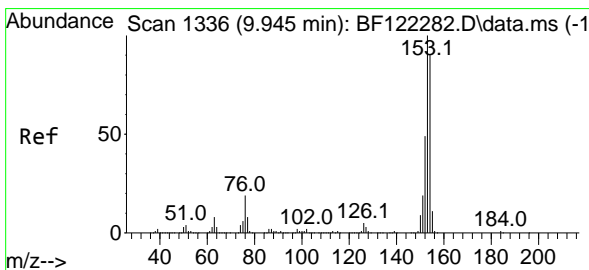
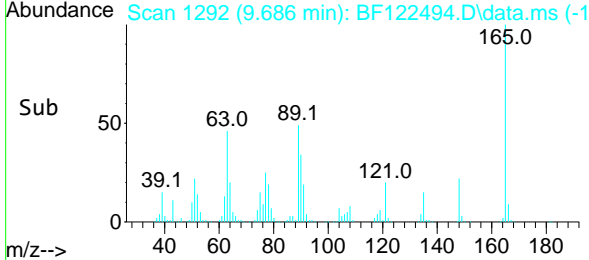
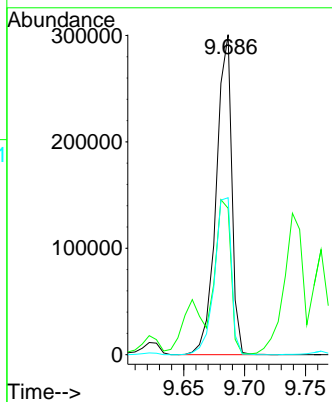


#51
 2,6-Dinitrotoluene
 Concen: 42.09 ng
 RT: 9.686 min Scan# 1292
 Delta R.T. -0.000 min
 Lab File: BF122494.D
 Acq: 27 Nov 2020 10:20

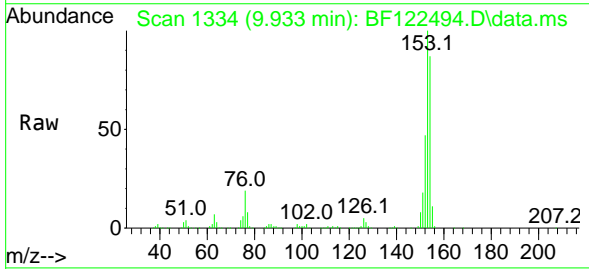
Instrument :
 BNA_F
ClientSampled :
 SSTDCCC040



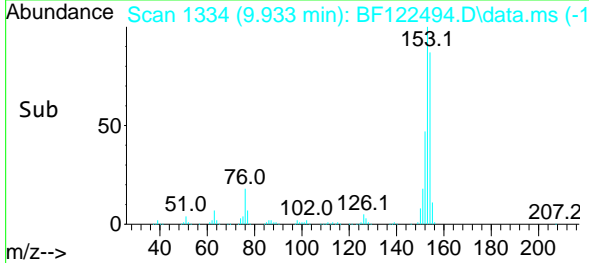
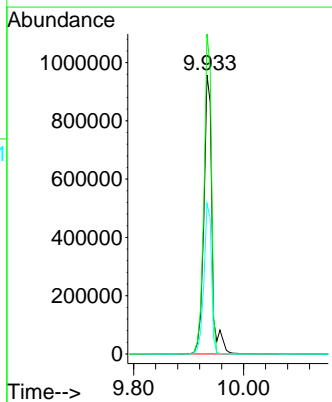
Tgt Ion:165 Resp: 267699
 Ion Ratio Lower Upper
 165 100
 63 45.8 51.8 77.6#
 89 49.1 49.0 73.6

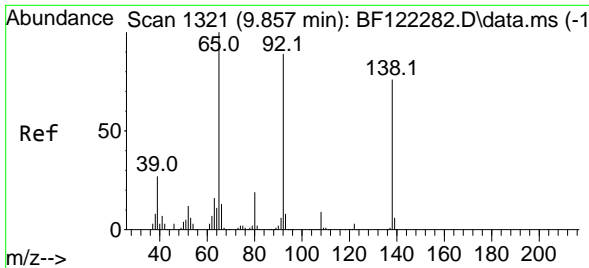


#52
 Acenaphthene
 Concen: 40.10 ng
 RT: 9.933 min Scan# 1334
 Delta R.T. -0.006 min
 Lab File: BF122494.D
 Acq: 27 Nov 2020 10:20



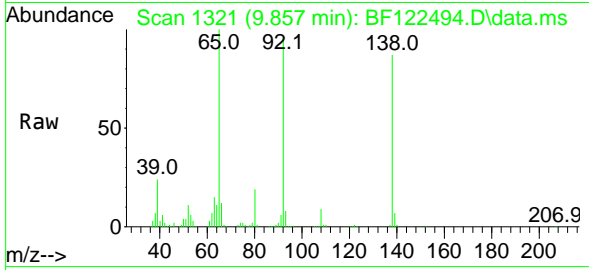
Tgt Ion:154 Resp: 980696
 Ion Ratio Lower Upper
 154 100
 153 114.7 89.8 134.8
 152 54.0 43.2 64.8





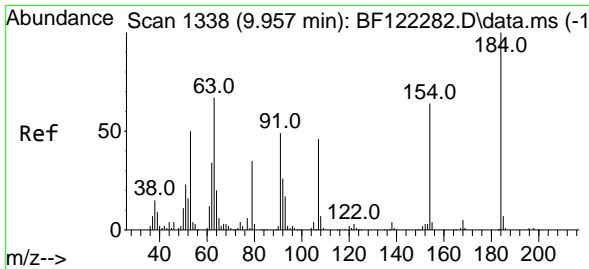
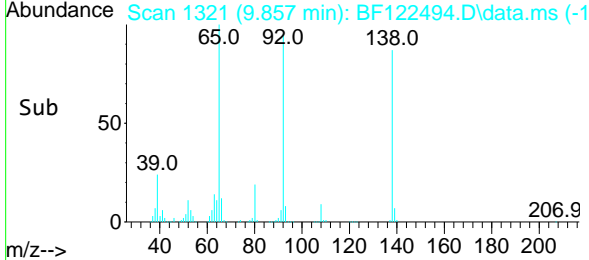
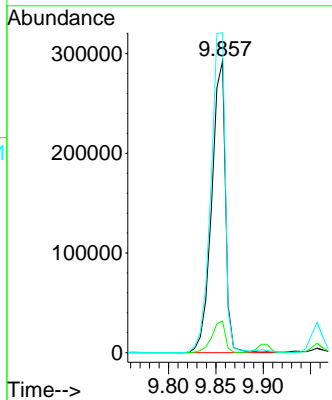
#53
 3-Nitroaniline
 Concen: 40.81 ng
 RT: 9.857 min Scan# 1321
 Delta R.T. -0.000 min
 Lab File: BF122494.D
 Acq: 27 Nov 2020 10:20

Instrument :
 BNA_F
ClientSampled :
 SSTDCCC040



Tgt Ion:138 Resp: 295011

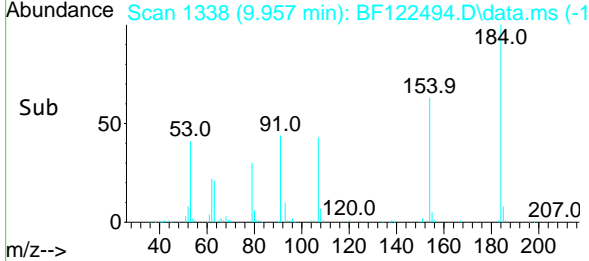
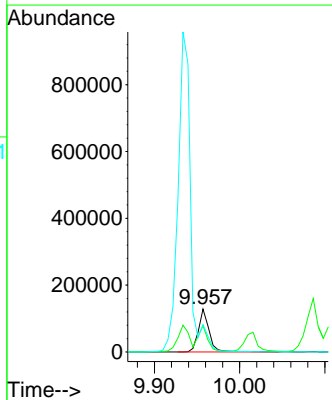
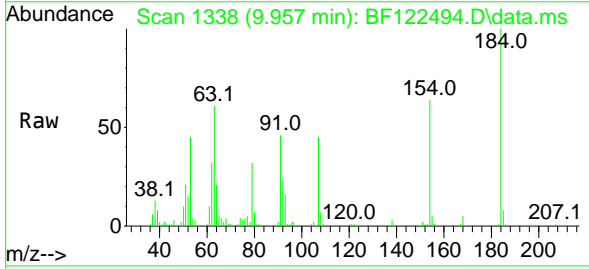
Ion	Ratio	Lower	Upper
138	100		
108	10.9	8.6	13.0
92	109.8	96.6	144.8

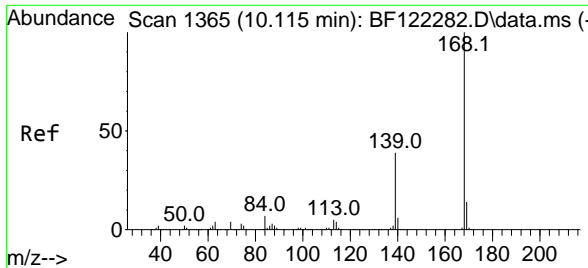


#54
 2,4-Dinitrophenol
 Concen: 54.11 ng
 RT: 9.957 min Scan# 1338
 Delta R.T. -0.000 min
 Lab File: BF122494.D
 Acq: 27 Nov 2020 10:20

Tgt Ion:184 Resp: 112240

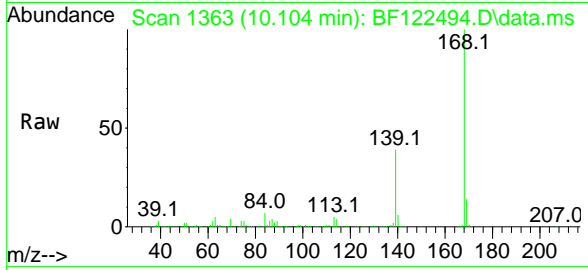
Ion	Ratio	Lower	Upper
184	100		
63	61.3	45.9	68.9
154	63.7	45.8	68.6



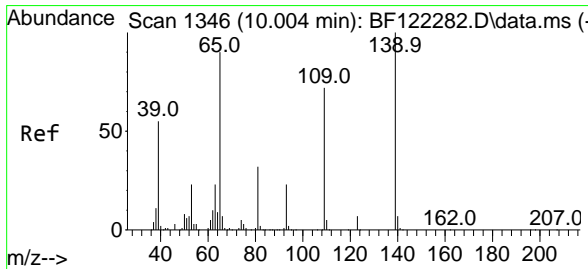
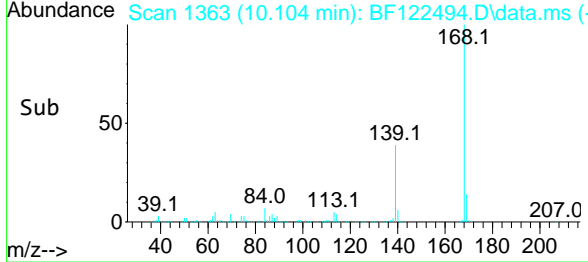
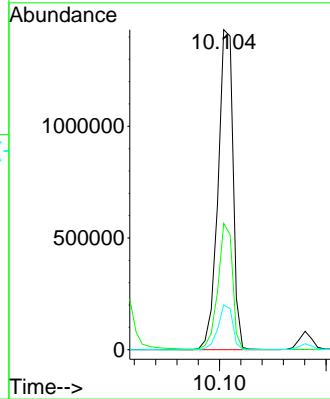


#55
 Dibenzofuran
 Concen: 39.01 ng
 RT: 10.104 min Scan# 1363
 Delta R.T. -0.006 min
 Lab File: BF122494.D
 Acq: 27 Nov 2020 10:20

Instrument :
 BNA_F
 ClientSampled :
 SSTDCCC040

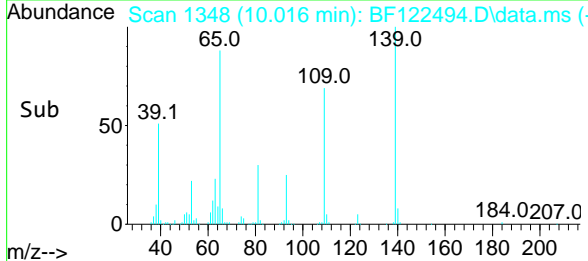
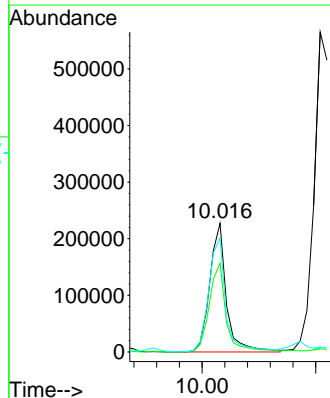
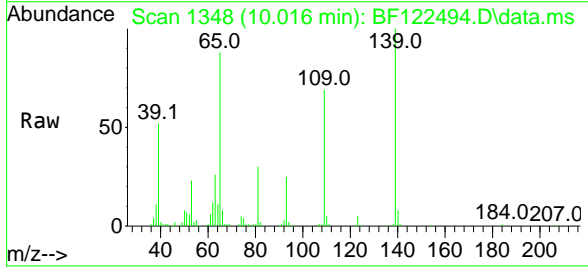


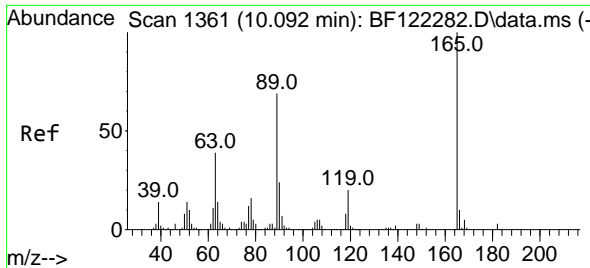
Tgt Ion:168 Resp: 1398026
 Ion Ratio Lower Upper
 168 100
 139 39.5 31.0 46.6
 169 14.0 11.3 16.9



#56
 4-Nitrophenol
 Concen: 39.56 ng
 RT: 10.016 min Scan# 1348
 Delta R.T. -0.000 min
 Lab File: BF122494.D
 Acq: 27 Nov 2020 10:20

Tgt Ion:139 Resp: 231078
 Ion Ratio Lower Upper
 139 100
 109 68.9 45.4 85.4
 65 88.4 68.4 108.4



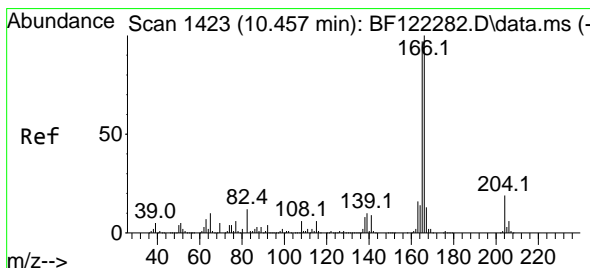
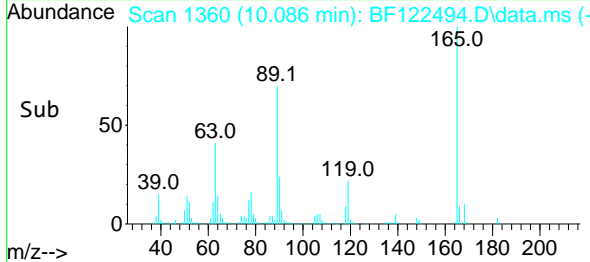
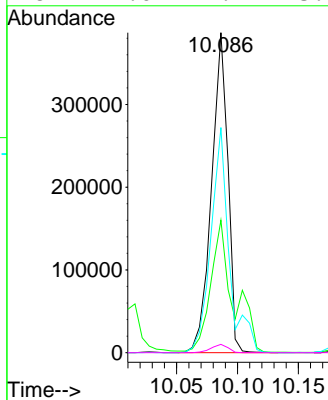
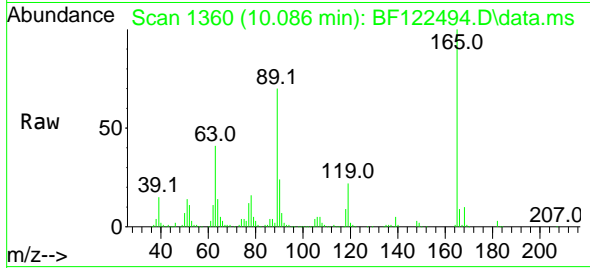


#57
 2,4-Dinitrotoluene
 Concen: 44.81 ng
 RT: 10.086 min Scan# 1360
 Delta R.T. -0.000 min
 Lab File: BF122494.D
 Acq: 27 Nov 2020 10:20

Instrument :
 BNA_F
 ClientSampled :
 SSTDCCC040

Tgt Ion:165 Resp: 360647

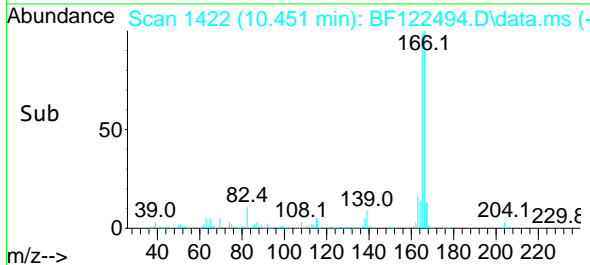
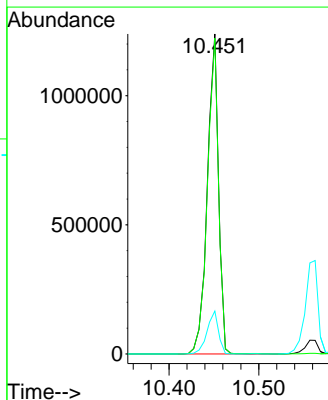
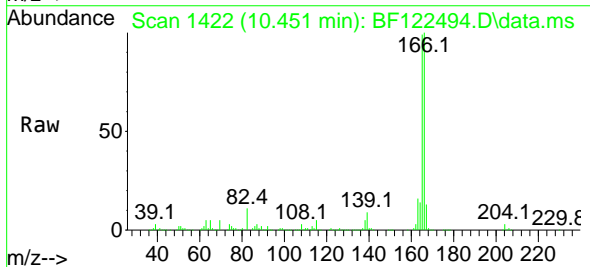
Ion	Ratio	Lower	Upper
165	100		
63	41.4	41.3	61.9
89	70.3	61.8	92.8
182	2.6	2.1	3.1

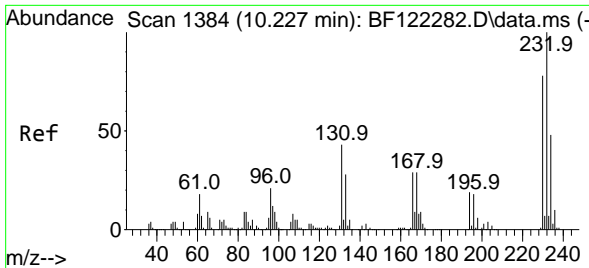


#58
 Fluorene
 Concen: 39.03 ng
 RT: 10.451 min Scan# 1422
 Delta R.T. -0.000 min
 Lab File: BF122494.D
 Acq: 27 Nov 2020 10:20

Tgt Ion:166 Resp: 1071086

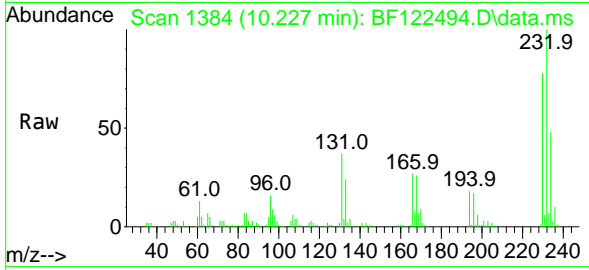
Ion	Ratio	Lower	Upper
166	100		
165	98.6	79.1	118.7
167	13.4	11.0	16.6



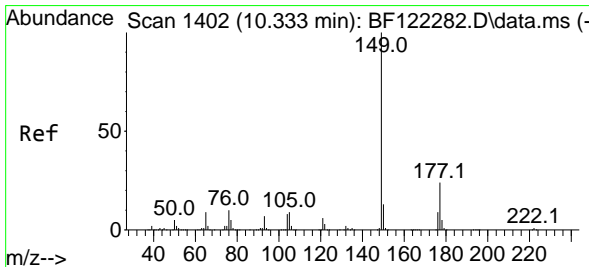
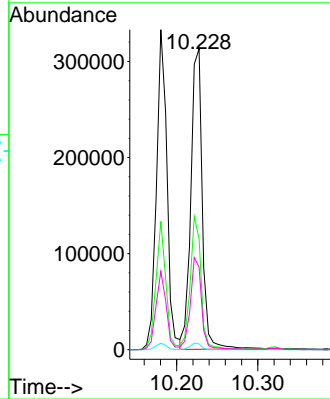
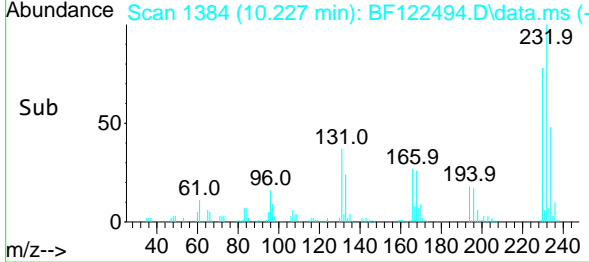


#59
 2,3,4,6-Tetrachlorophenol
 Concen: 43.29 ng
 RT: 10.227 min Scan# 1384
 Delta R.T. -0.000 min
 Lab File: BF122494.D
 Acq: 27 Nov 2020 10:20

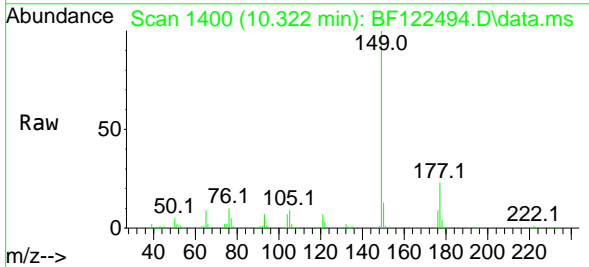
Instrument :
 BNA_F
 ClientSampled :
 SSTDCCC040



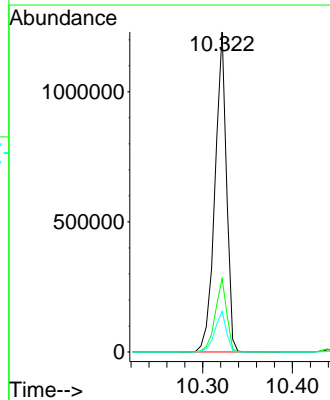
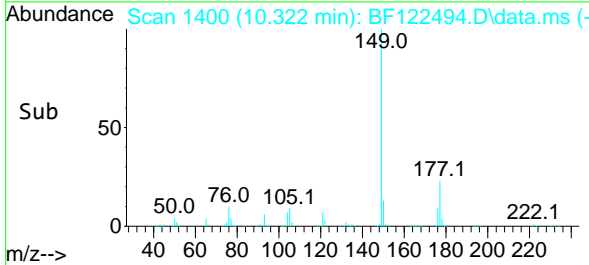
Tgt Ion:232 Resp: 307363
 Ion Ratio Lower Upper
 232 100
 131 41.6 35.9 53.9
 130 2.1 1.8 2.6
 166 29.8 23.5 35.3

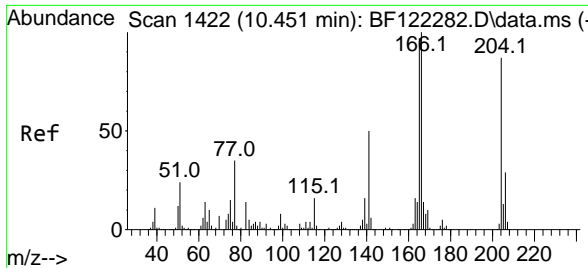


#60
 Diethylphthalate
 Concen: 38.66 ng
 RT: 10.322 min Scan# 1400
 Delta R.T. -0.000 min
 Lab File: BF122494.D
 Acq: 27 Nov 2020 10:20



Tgt Ion:149 Resp: 1097060
 Ion Ratio Lower Upper
 149 100
 177 22.9 18.1 27.1
 150 12.7 10.3 15.5

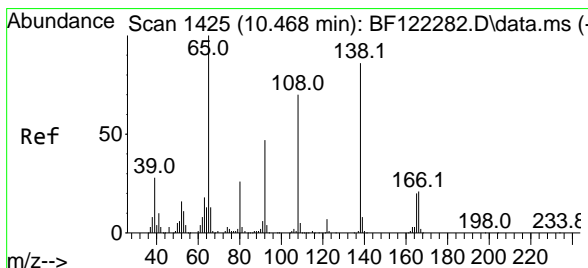
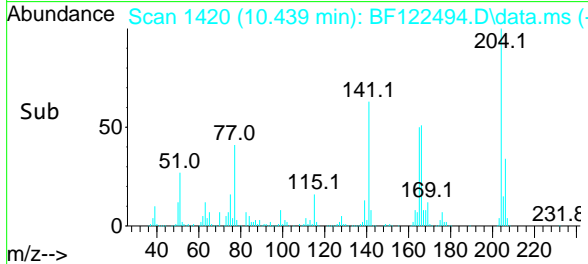
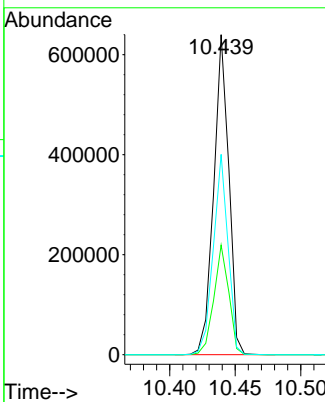
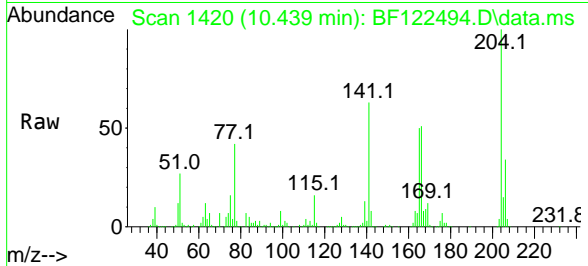




#61
 4-Chlorophenyl-phenylether
 Concen: 39.39 ng
 RT: 10.439 min Scan# 1420
 Delta R.T. -0.006 min
 Lab File: BF122494.D
 Acq: 27 Nov 2020 10:20

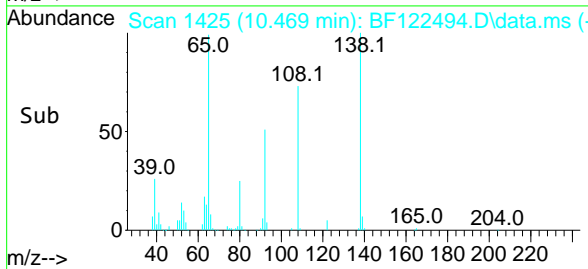
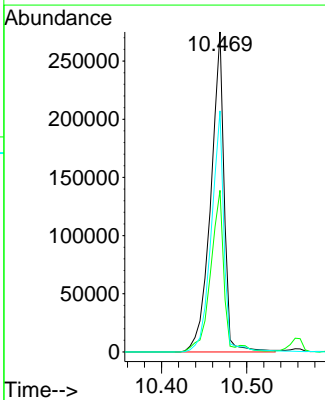
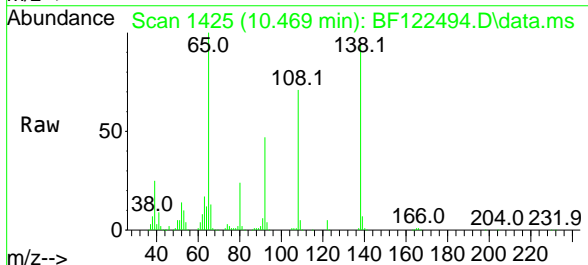
Instrument :
 BNA_F
 ClientSampled :
 SSTDCCC040

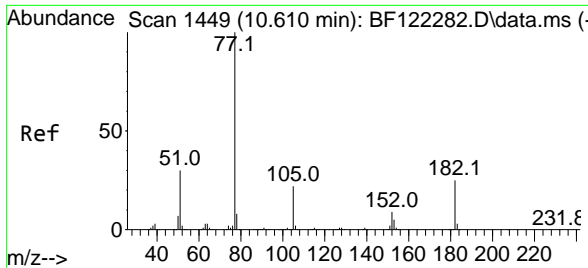
Tgt Ion	Resp	Lower	Upper
204	100		
206	34.3	26.0	39.0
141	62.6	46.2	69.4



#62
 4-Nitroaniline
 Concen: 42.31 ng
 RT: 10.469 min Scan# 1425
 Delta R.T. -0.006 min
 Lab File: BF122494.D
 Acq: 27 Nov 2020 10:20

Tgt Ion	Resp	Lower	Upper
138	100		
92	50.5	31.0	71.0
108	75.3	51.5	91.5



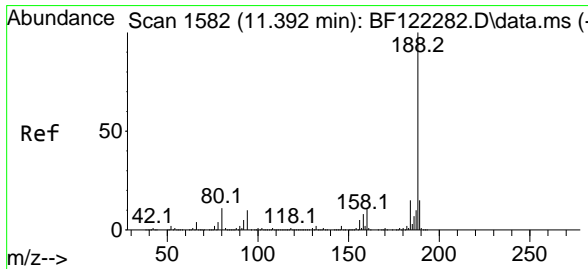
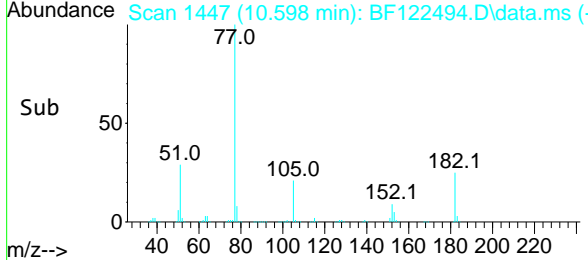
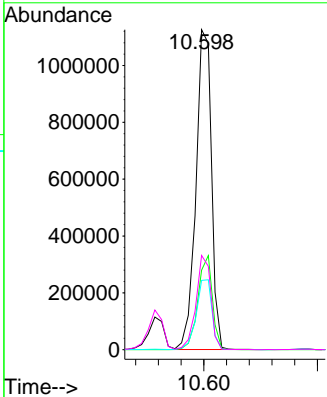
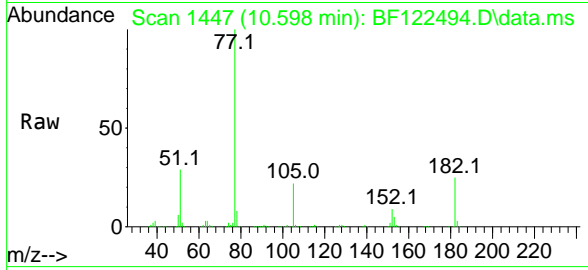


#63
 Azobenzene
 Concen: 35.96 ng
 RT: 10.598 min Scan# 1447
 Delta R.T. -0.006 min
 Lab File: BF122494.D
 Acq: 27 Nov 2020 10:20

Instrument :
 BNA_F
ClientSampled :
 SSTDCCC040

Tgt Ion: 77 Resp: 1070570

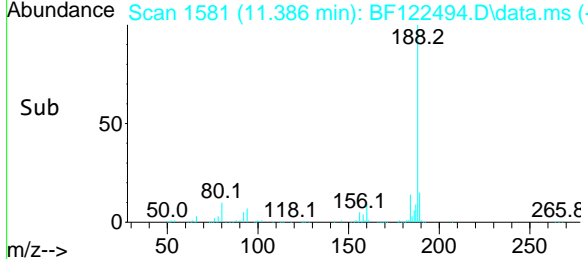
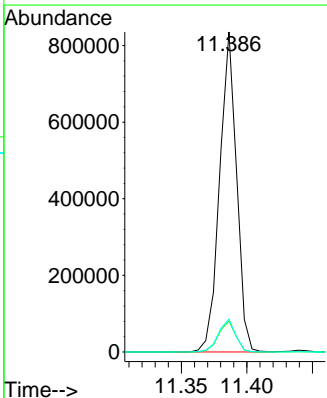
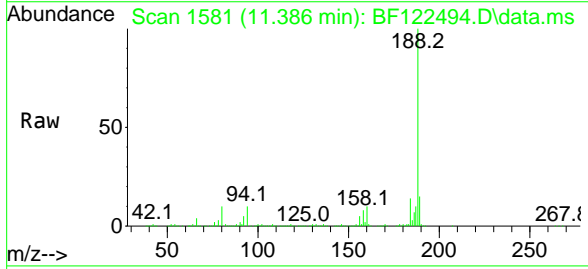
Ion	Ratio	Lower	Upper
77	100		
182	24.9	3.4	43.4
105	21.6	1.7	41.7
51	29.5	11.6	51.6

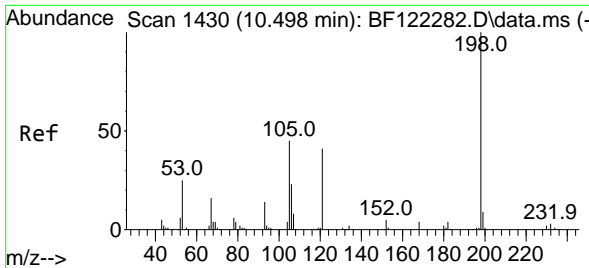


#64
 Phenanthrene-d10
 Concen: 20.00 ng
 RT: 11.386 min Scan# 1581
 Delta R.T. -0.000 min
 Lab File: BF122494.D
 Acq: 27 Nov 2020 10:20

Tgt Ion: 188 Resp: 749693

Ion	Ratio	Lower	Upper
188	100		
94	9.7	8.3	12.5
80	10.3	9.1	13.7

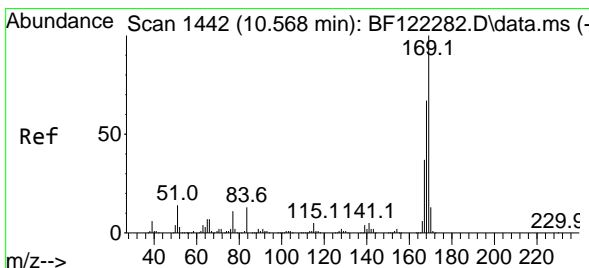
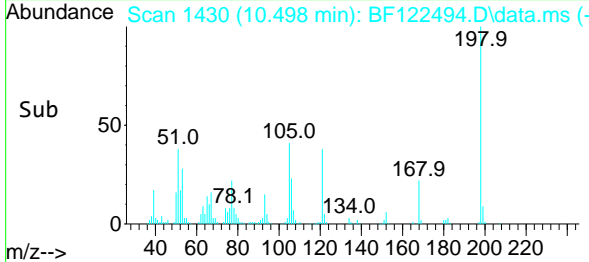
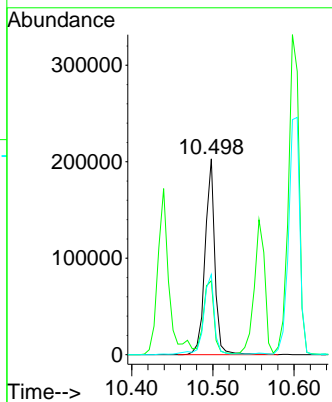
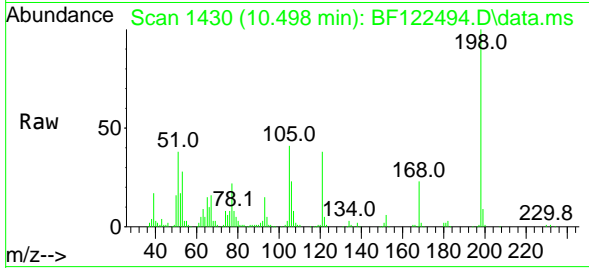




#65
 4,6-Dinitro-2-methylphenol
 Concen: 51.09 ng
 RT: 10.498 min Scan# 1430
 Delta R.T. -0.000 min
 Lab File: BF122494.D
 Acq: 27 Nov 2020 10:20

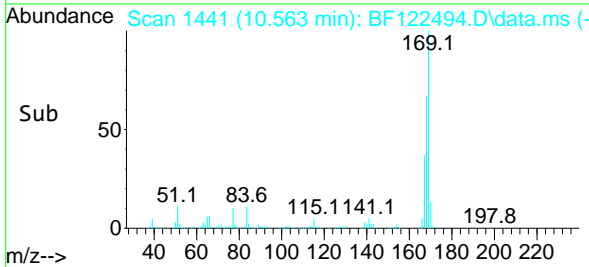
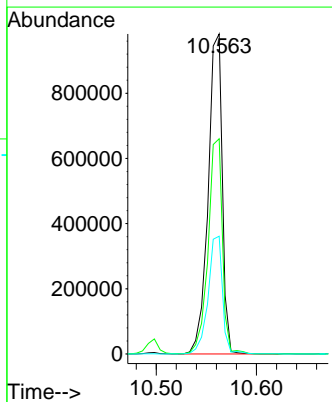
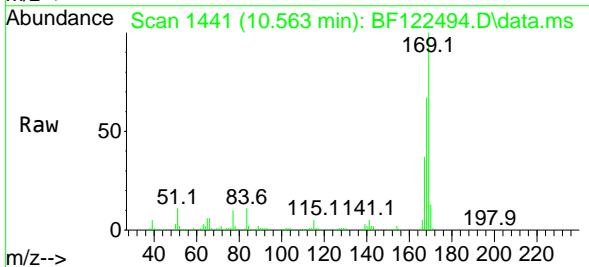
Instrument :
 BNA_F
 ClientSampleID :
 SSTDCCC040

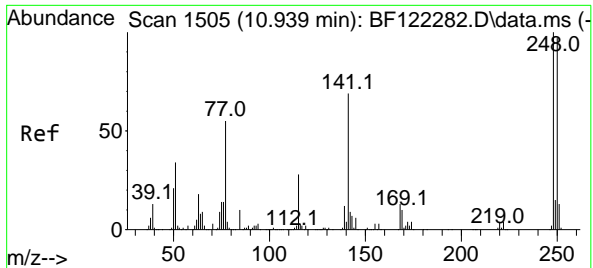
Tgt Ion:198 Resp: 168931
 Ion Ratio Lower Upper
 198 100
 51 37.7 29.6 69.6
 105 40.9 24.4 64.4



#66
 n-Nitrosodiphenylamine
 Concen: 37.83 ng
 RT: 10.563 min Scan# 1441
 Delta R.T. -0.000 min
 Lab File: BF122494.D
 Acq: 27 Nov 2020 10:20

Tgt Ion:169 Resp: 966411
 Ion Ratio Lower Upper
 169 100
 168 67.3 50.0 75.0
 167 36.8 27.8 41.6

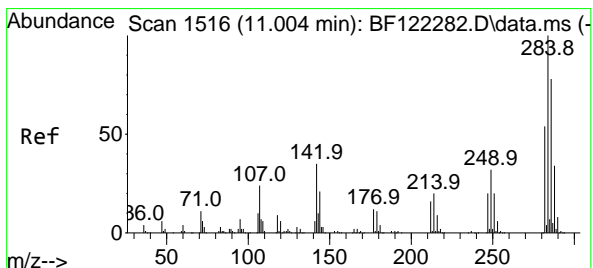
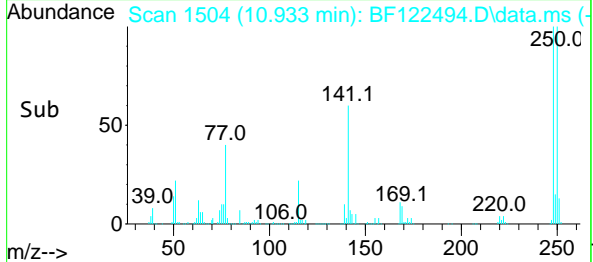
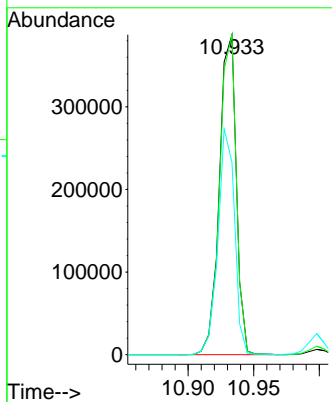
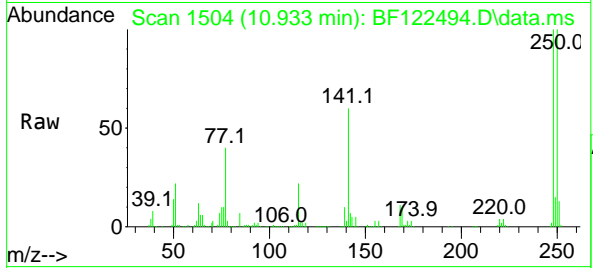




#67
 4-Bromophenyl-phenylether
 Concen: 39.33 ng
 RT: 10.933 min Scan# 1504
 Delta R.T. -0.000 min
 Lab File: BF122494.D
 Acq: 27 Nov 2020 10:20

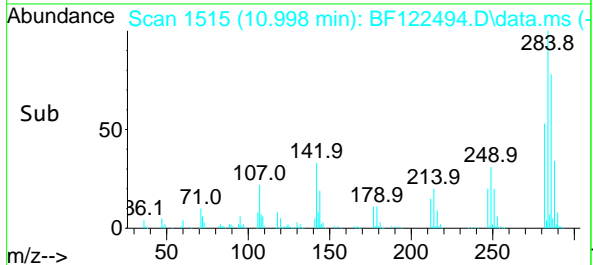
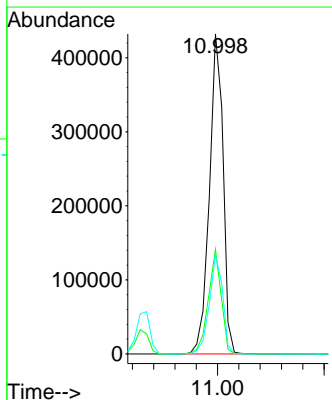
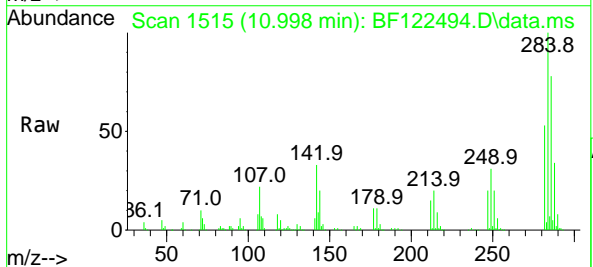
Instrument :
 BNA_F
 ClientSampled :
 SSTDCCC040

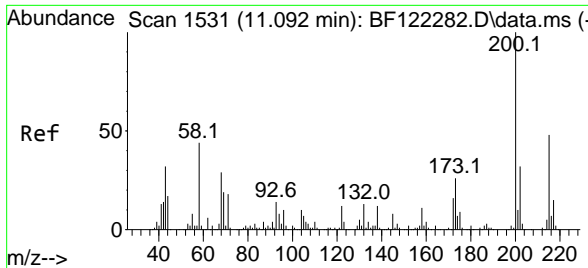
Tgt Ion	Resp	Lower	Upper
248	100		
250	99.9	77.0	115.6
141	60.2	53.7	80.5



#68
 Hexachlorobenzene
 Concen: 40.62 ng
 RT: 10.998 min Scan# 1515
 Delta R.T. -0.006 min
 Lab File: BF122494.D
 Acq: 27 Nov 2020 10:20

Tgt Ion	Resp	Lower	Upper
284	100		
142	32.7	27.4	41.2
249	31.0	24.2	36.4

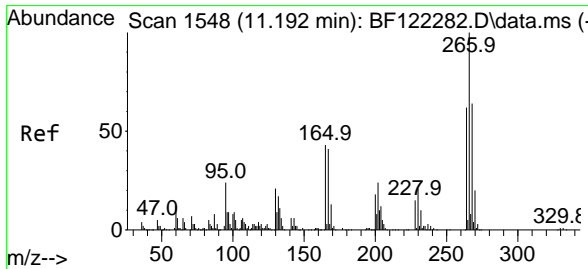
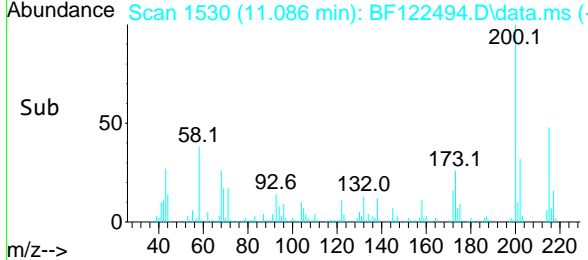
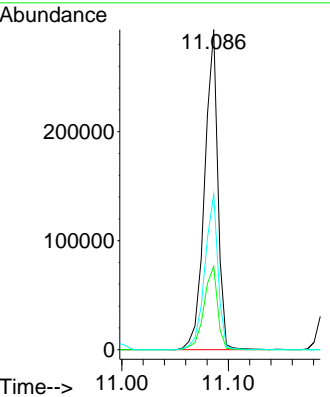
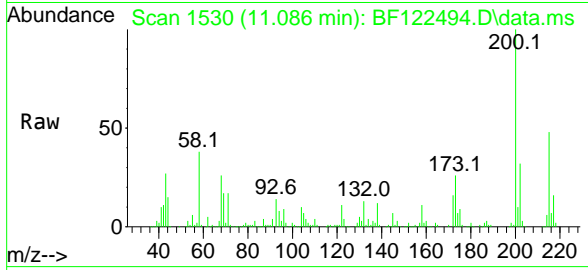




#69
Atrazine
 Concen: 39.71 ng
 RT: 11.086 min Scan# 1530
 Delta R.T. -0.000 min
 Lab File: BF122494.D
 Acq: 27 Nov 2020 10:20

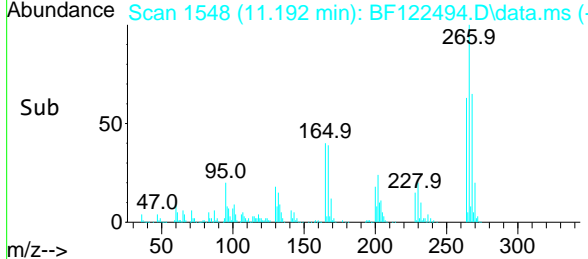
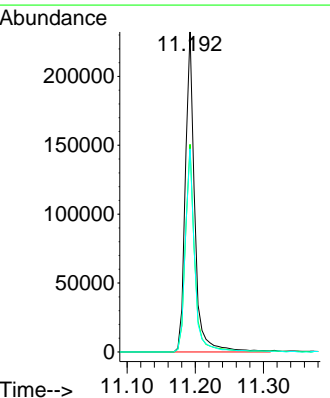
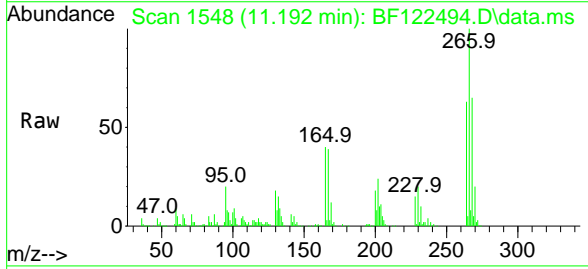
Instrument :
 BNA_F
ClientSampled :
 SSTDCCC040

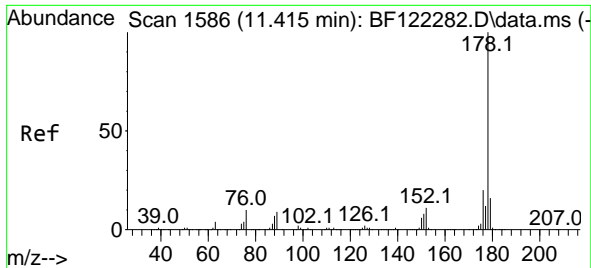
Tgt Ion	Resp	Lower	Upper
200	252612		
200	100		
173	26.0	7.5	47.5
215	48.5	27.1	67.1



#70
Pentachlorophenol
 Concen: 40.38 ng
 RT: 11.192 min Scan# 1548
 Delta R.T. -0.000 min
 Lab File: BF122494.D
 Acq: 27 Nov 2020 10:20

Tgt Ion	Resp	Lower	Upper
266	221412		
266	100		
268	64.9	52.4	78.6
264	63.5	49.9	74.9



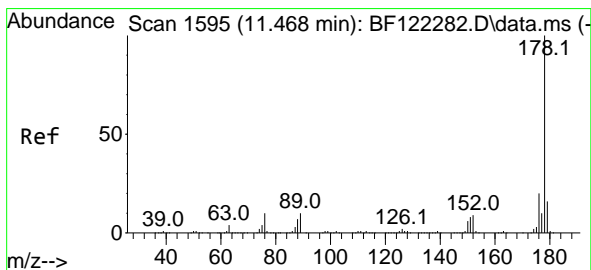
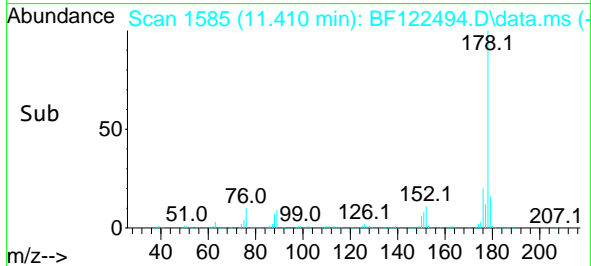
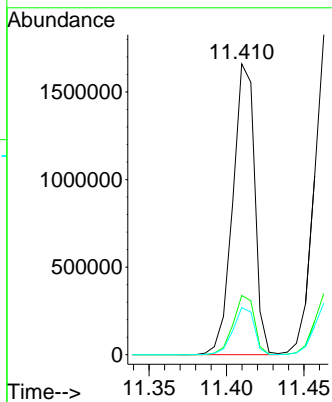
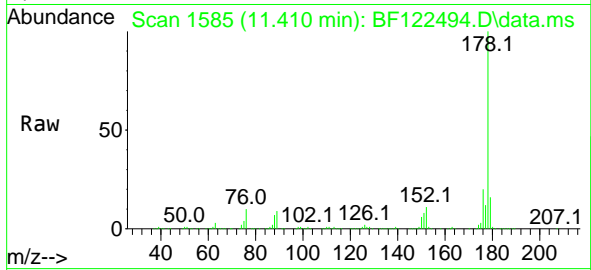


#71
 Phenanthrene
 Concen: 38.32 ng
 RT: 11.410 min Scan# 1585
 Delta R.T. -0.006 min
 Lab File: BF122494.D
 Acq: 27 Nov 2020 10:20

Instrument :
 BNA_F
ClientSampled :
 SSTDCCC040

Tgt Ion:178 Resp: 1629866

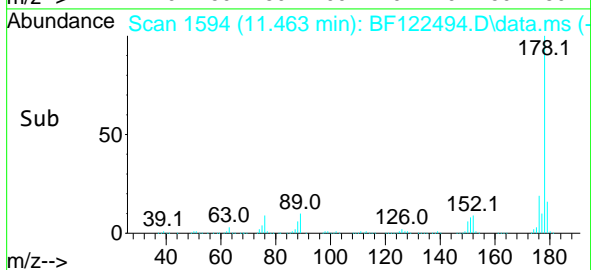
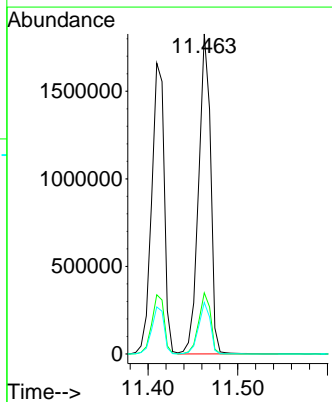
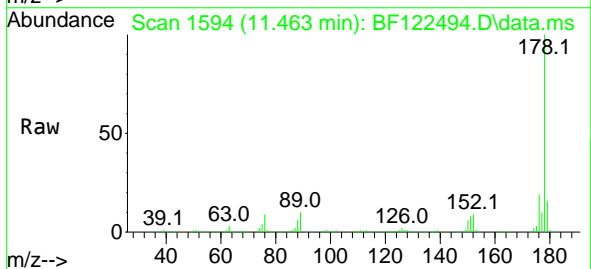
Ion	Ratio	Lower	Upper
178	100		
176	20.3	15.9	23.9
179	16.2	12.2	18.4

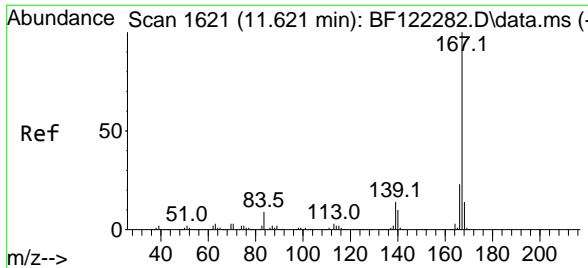


#72
 Anthracene
 Concen: 38.60 ng
 RT: 11.463 min Scan# 1594
 Delta R.T. -0.006 min
 Lab File: BF122494.D
 Acq: 27 Nov 2020 10:20

Tgt Ion:178 Resp: 1692113

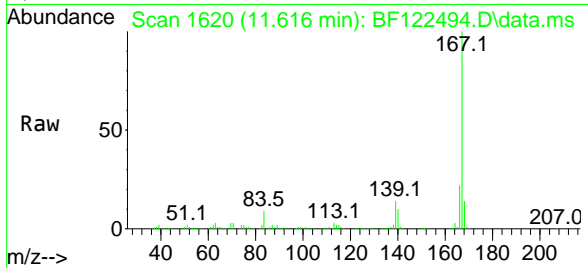
Ion	Ratio	Lower	Upper
178	100		
176	19.1	15.7	23.5
179	16.1	12.7	19.1



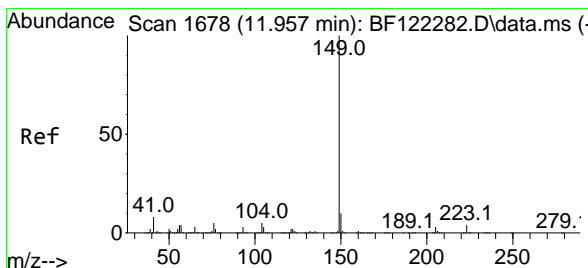
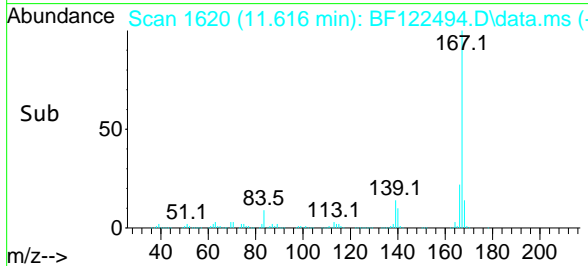
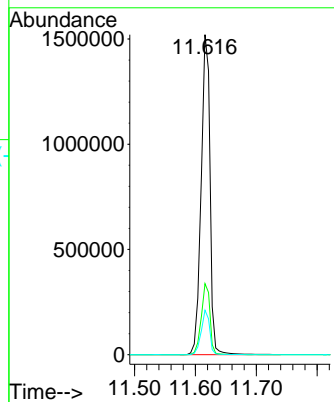


#73
 Carbazole
 Concen: 38.84 ng
 RT: 11.616 min Scan# 1620
 Delta R.T. -0.006 min
 Lab File: BF122494.D
 Acq: 27 Nov 2020 10:20

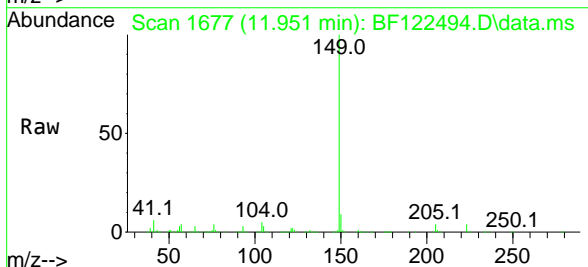
Instrument :
 BNA_F
 ClientSampled :
 SSTDCCC040



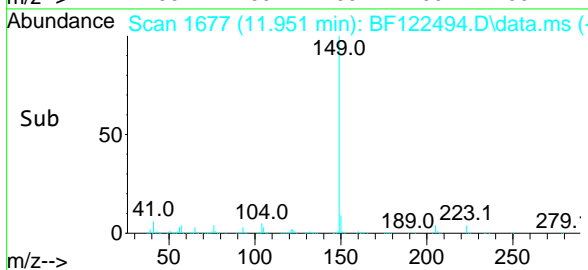
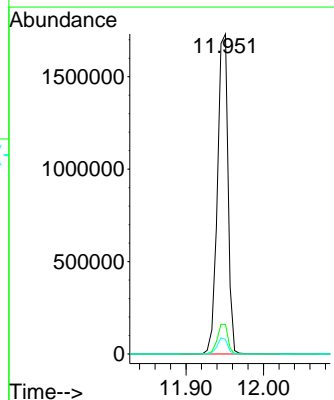
Tgt Ion:167 Resp: 1549161
 Ion Ratio Lower Upper
 167 100
 166 22.2 17.8 26.6
 139 13.9 10.8 16.2

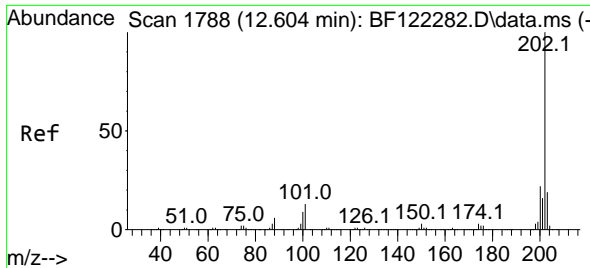


#74
 Di-n-butylphthalate
 Concen: 38.56 ng
 RT: 11.951 min Scan# 1677
 Delta R.T. -0.000 min
 Lab File: BF122494.D
 Acq: 27 Nov 2020 10:20



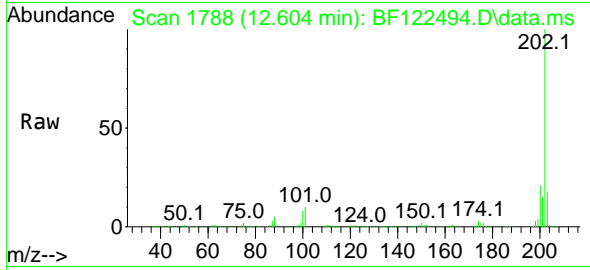
Tgt Ion:149 Resp: 1639312
 Ion Ratio Lower Upper
 149 100
 150 9.3 7.7 11.5
 104 4.6 4.2 6.2



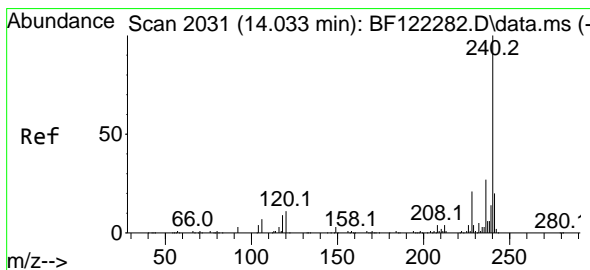
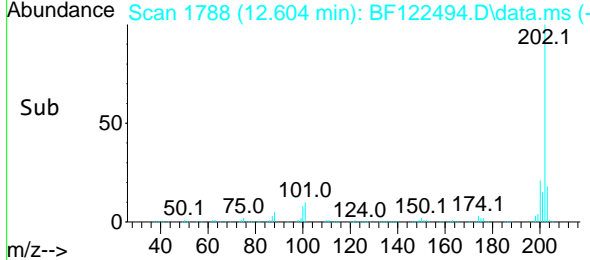
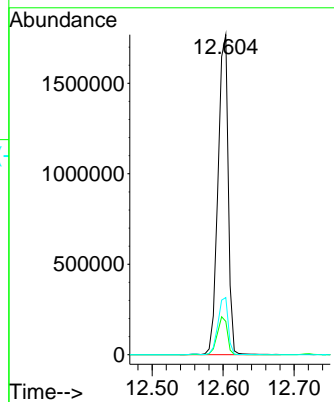


#75
 Fluoranthene
 Concen: 39.58 ng
 RT: 12.604 min Scan# 1788
 Delta R.T. -0.000 min
 Lab File: BF122494.D
 Acq: 27 Nov 2020 10:20

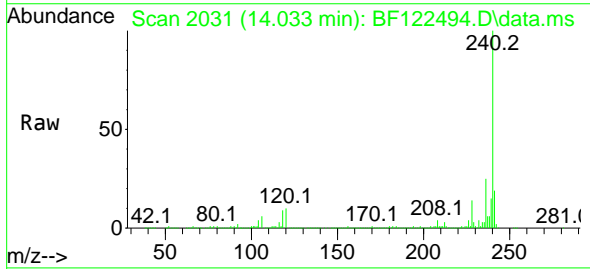
Instrument :
 BNA_F
ClientSampled :
 SSTDCCC040



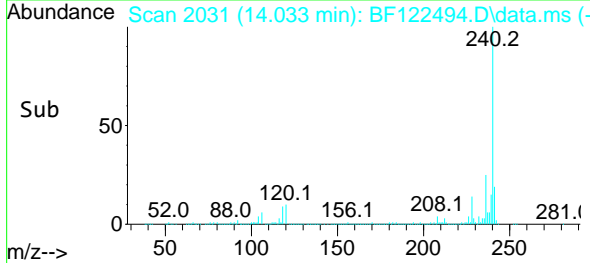
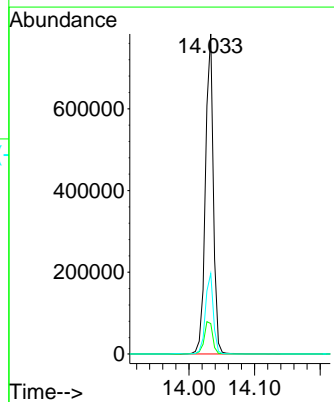
Tgt Ion: 202 Resp: 1757397
 Ion Ratio Lower Upper
 202 100
 101 10.4 0.0 33.4
 203 17.9 0.0 37.9

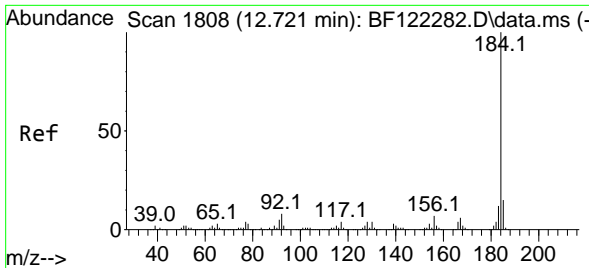


#76
 Chrysene-d12
 Concen: 20.00 ng
 RT: 14.033 min Scan# 2031
 Delta R.T. -0.000 min
 Lab File: BF122494.D
 Acq: 27 Nov 2020 10:20



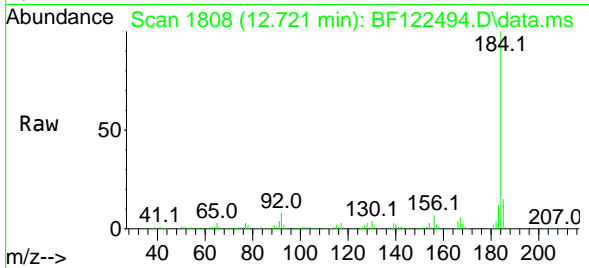
Tgt Ion: 240 Resp: 656136
 Ion Ratio Lower Upper
 240 100
 120 9.5 9.2 13.8
 236 25.2 20.9 31.3





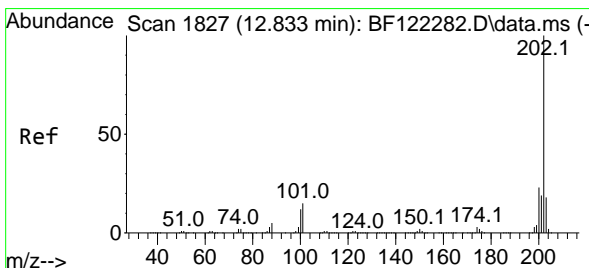
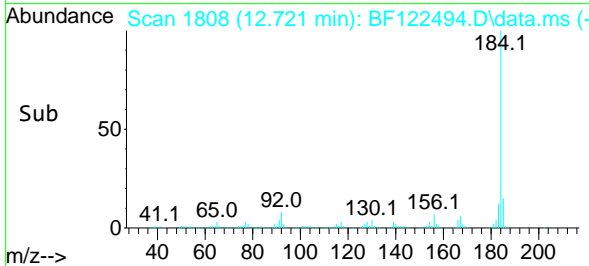
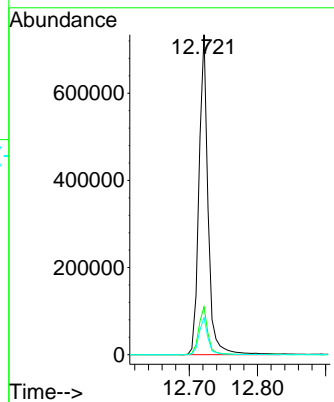
#77
 Benzidine
 Concen: 37.30 ng
 RT: 12.721 min Scan# 1808
 Delta R.T. -0.000 min
 Lab File: BF122494.D
 Acq: 27 Nov 2020 10:20

Instrument :
 BNA_F
 ClientSampled :
 SSTDCCC040

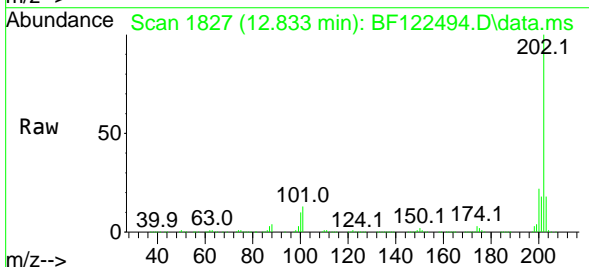


Tgt Ion:184 Resp: 678825

Ion	Ratio	Lower	Upper
184	100		
185	14.9	11.6	17.4
183	11.6	9.4	14.0

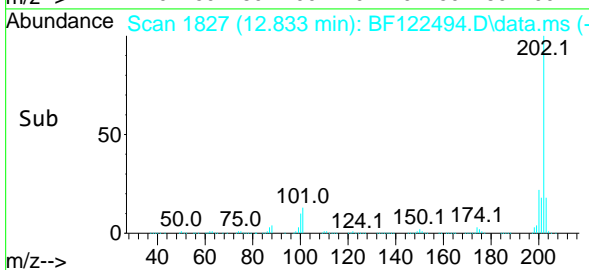
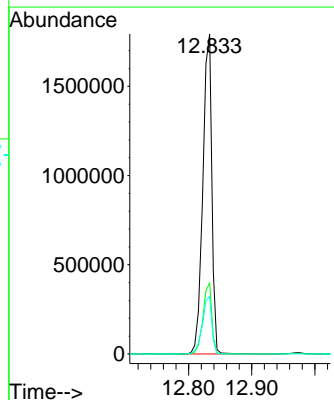


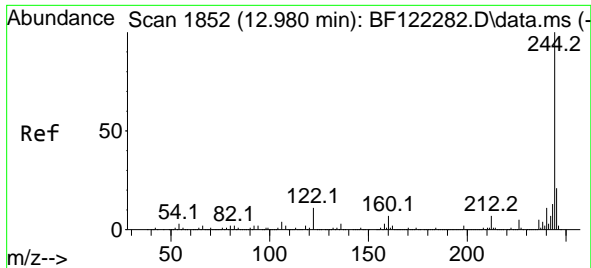
#78
 Pyrene
 Concen: 38.68 ng
 RT: 12.833 min Scan# 1827
 Delta R.T. -0.000 min
 Lab File: BF122494.D
 Acq: 27 Nov 2020 10:20



Tgt Ion:202 Resp: 1782792

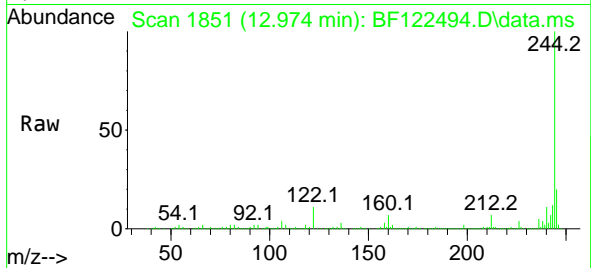
Ion	Ratio	Lower	Upper
202	100		
200	22.2	17.4	26.2
203	17.9	14.6	21.8



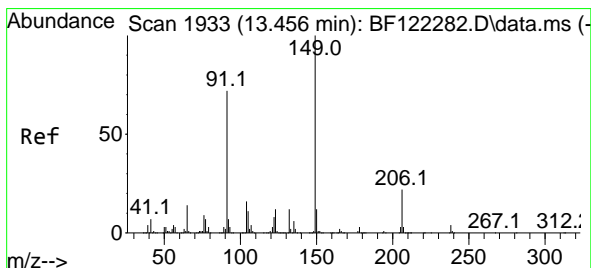
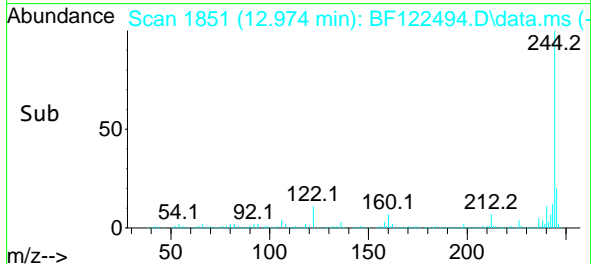
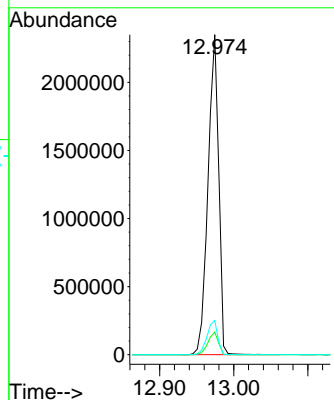


#79
 Terphenyl-d14
 Concen: 76.05 ng
 RT: 12.974 min Scan# 1851
 Delta R.T. -0.000 min
 Lab File: BF122494.D
 Acq: 27 Nov 2020 10:20

Instrument :
 BNA_F
 ClientSampleId :
 SSTDCCC040

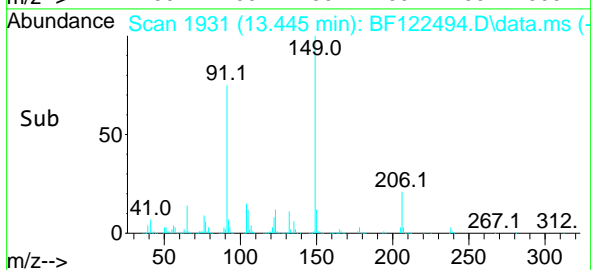
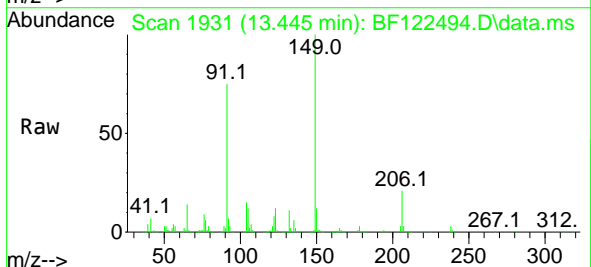
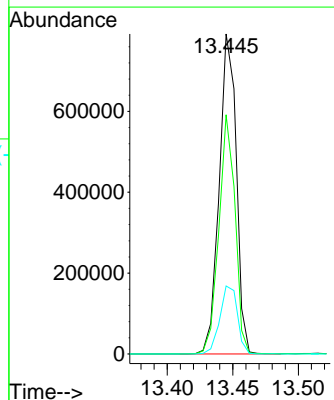


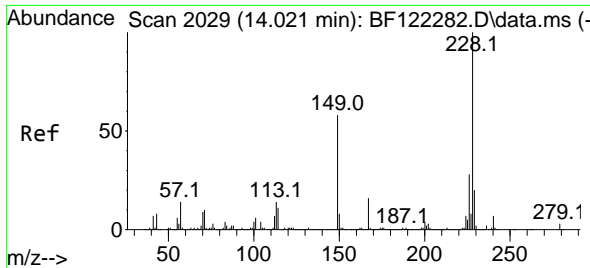
Tgt Ion:244 Resp: 2355382
 Ion Ratio Lower Upper
 244 100
 212 7.1 5.4 8.2
 122 10.7 8.1 12.1



#80
 Butylbenzylphthalate
 Concen: 39.33 ng
 RT: 13.445 min Scan# 1931
 Delta R.T. -0.006 min
 Lab File: BF122494.D
 Acq: 27 Nov 2020 10:20

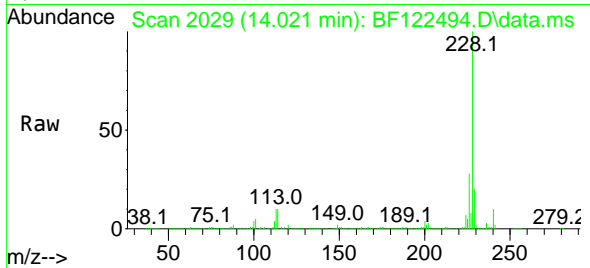
Tgt Ion:149 Resp: 715326
 Ion Ratio Lower Upper
 149 100
 91 74.7 61.0 91.4
 206 21.2 16.7 25.1



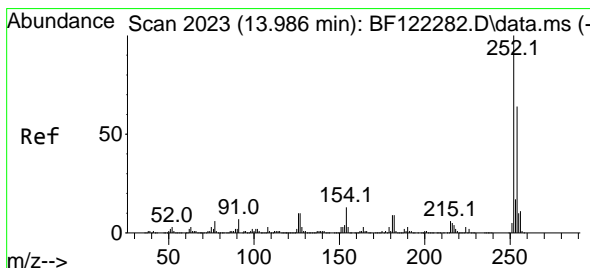
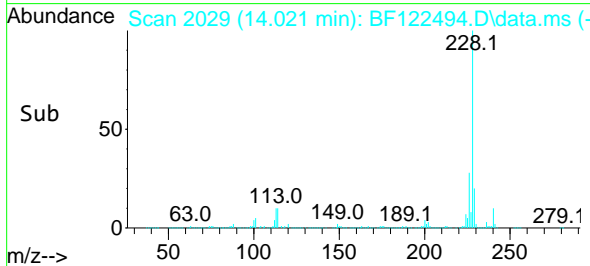
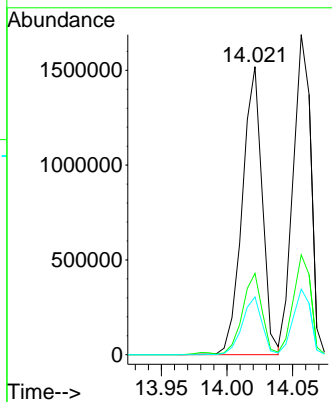


#81
 Benzo(a)anthracene
 Concen: 39.30 ng
 RT: 14.021 min Scan# 2029
 Delta R.T. -0.000 min
 Lab File: BF122494.D
 Acq: 27 Nov 2020 10:20

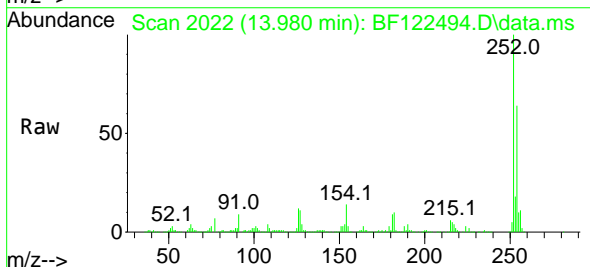
Instrument :
 BNA_F
 ClientSampled :
 SSTDCCC040



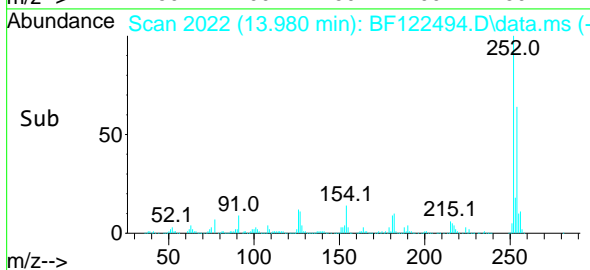
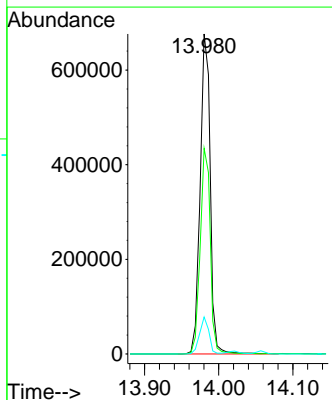
Tgt Ion:228 Resp: 1603747
 Ion Ratio Lower Upper
 228 100
 226 28.2 22.3 33.5
 229 20.0 16.2 24.4

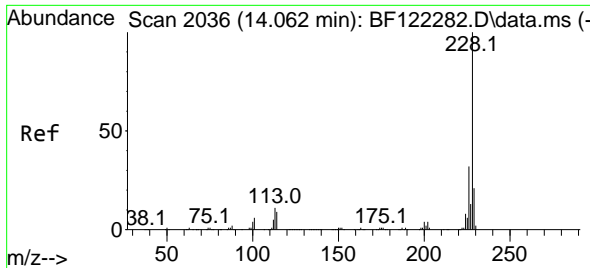


#82
 3,3'-Dichlorobenzidine
 Concen: 41.81 ng
 RT: 13.980 min Scan# 2022
 Delta R.T. -0.006 min
 Lab File: BF122494.D
 Acq: 27 Nov 2020 10:20



Tgt Ion:252 Resp: 635860
 Ion Ratio Lower Upper
 252 100
 254 64.2 51.8 77.6
 126 11.6 8.8 13.2



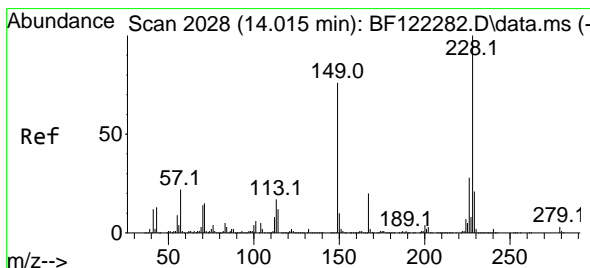
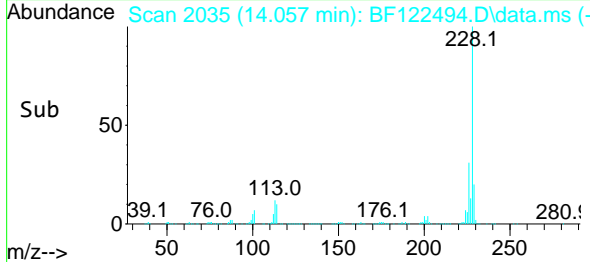
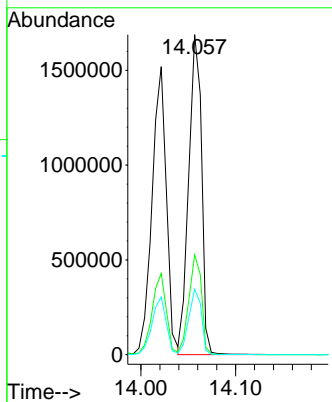
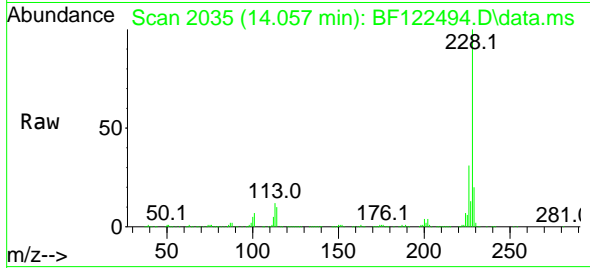


#83
 Chrysene
 Concen: 38.72 ng
 RT: 14.057 min Scan# 2035
 Delta R.T. -0.006 min
 Lab File: BF122494.D
 Acq: 27 Nov 2020 10:20

Instrument :
 BNA_F
ClientSampled :
 SSTDCCC040

Tgt Ion:228 Resp: 1591238

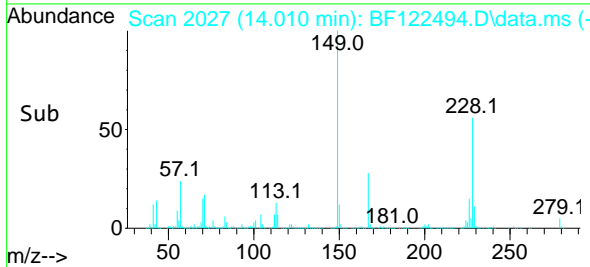
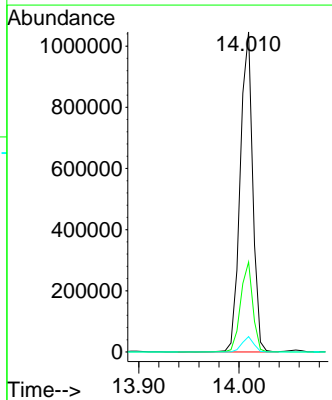
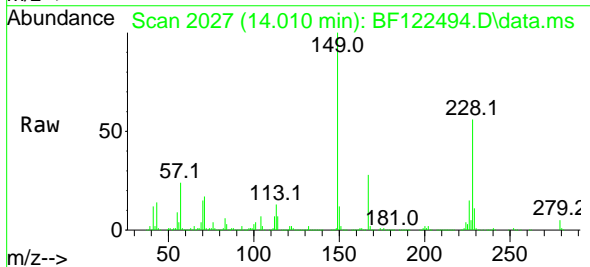
Ion	Ratio	Lower	Upper
228	100		
226	31.2	24.6	37.0
229	20.5	15.9	23.9

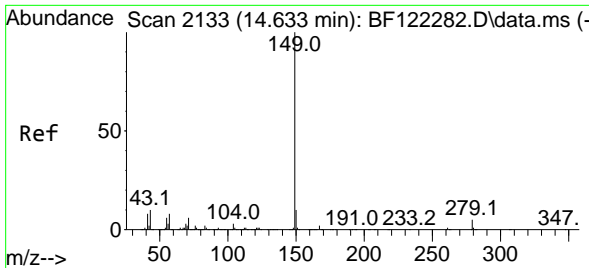


#84
 Bis(2-ethylhexyl)phthalate
 Concen: 41.10 ng
 RT: 14.010 min Scan# 2027
 Delta R.T. -0.000 min
 Lab File: BF122494.D
 Acq: 27 Nov 2020 10:20

Tgt Ion:149 Resp: 913378

Ion	Ratio	Lower	Upper
149	100		
167	28.1	20.9	31.3
279	4.8	3.2	4.8



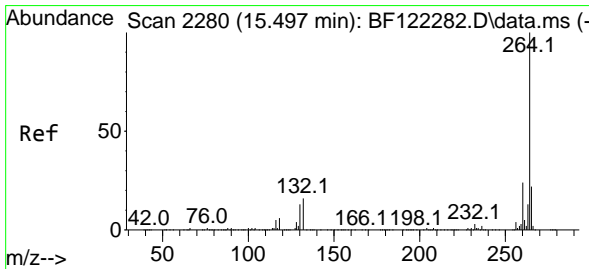
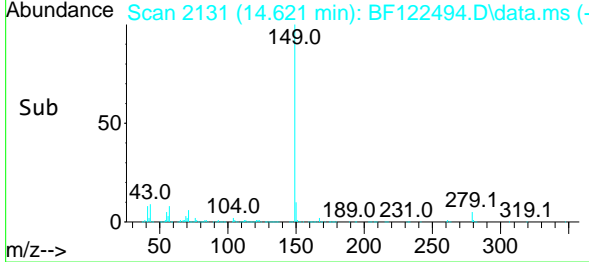
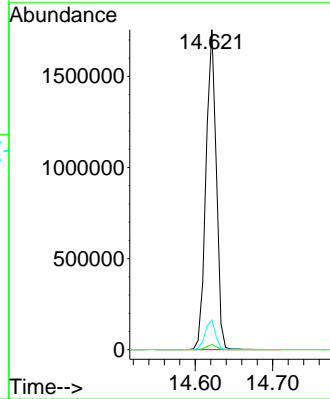
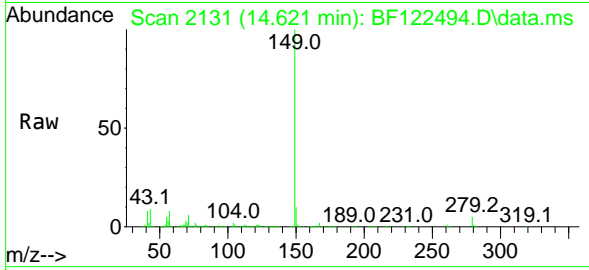


#85
 Di-n-octyl phthalate
 Concen: 43.03 ng
 RT: 14.621 min Scan# 2131
 Delta R.T. -0.006 min
 Lab File: BF122494.D
 Acq: 27 Nov 2020 10:20

Instrument :
 BNA_F
 ClientSampleId :
 SSTDCCC040

Tgt Ion:149 Resp: 1620830

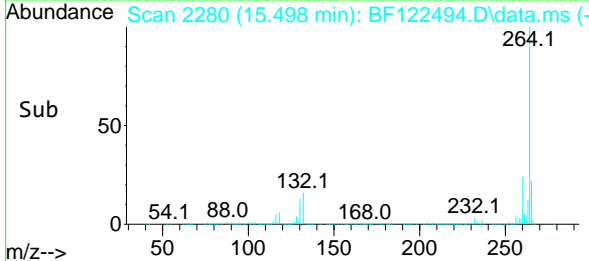
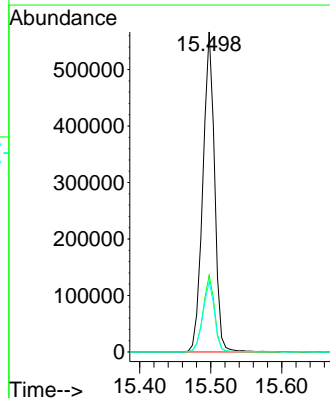
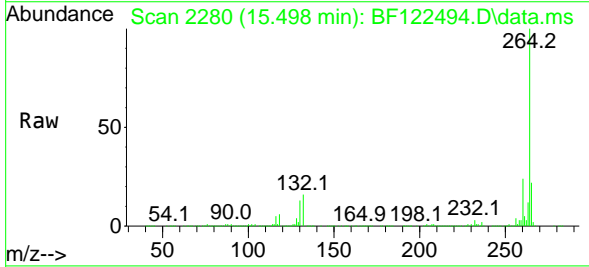
Ion	Ratio	Lower	Upper
149	100		
167	1.5	1.2	1.8
43	9.4	9.0	13.6

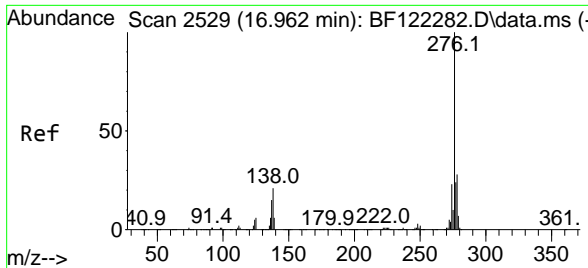


#86
 Perylene-d12
 Concen: 20.00 ng
 RT: 15.498 min Scan# 2280
 Delta R.T. -0.006 min
 Lab File: BF122494.D
 Acq: 27 Nov 2020 10:20

Tgt Ion:264 Resp: 652242

Ion	Ratio	Lower	Upper
264	100		
260	24.0	18.7	28.1
265	22.1	17.3	25.9



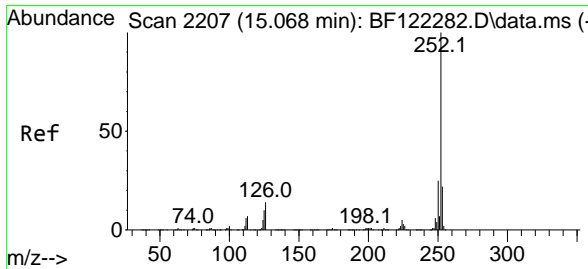
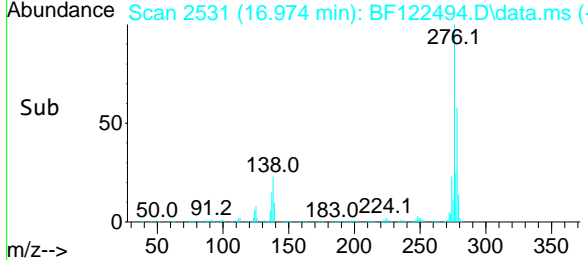
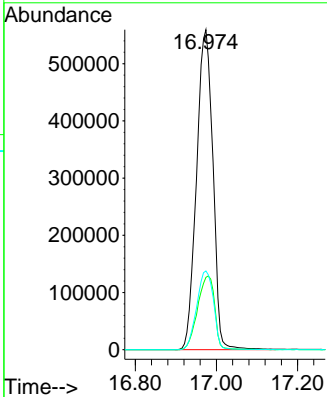
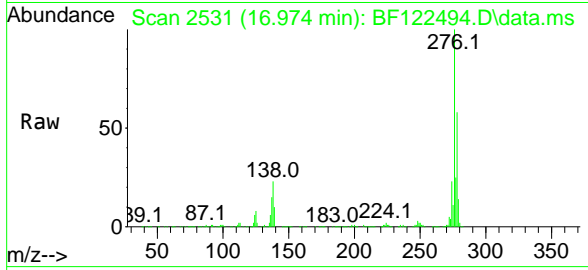


#87
 Indeno(1,2,3-cd)pyrene
 Concen: 39.96 ng
 RT: 16.974 min Scan# 2531
 Delta R.T. -0.000 min
 Lab File: BF122494.D
 Acq: 27 Nov 2020 10:20

Instrument :
 BNA_F
 ClientSampleId :
 SSTDCCC040

Tgt Ion:276 Resp: 1563972

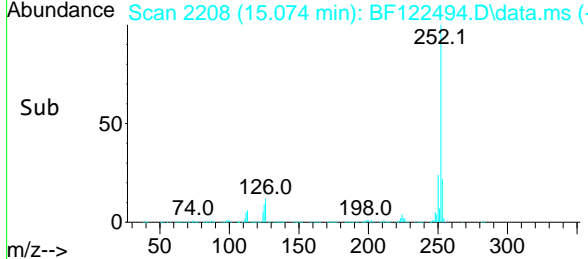
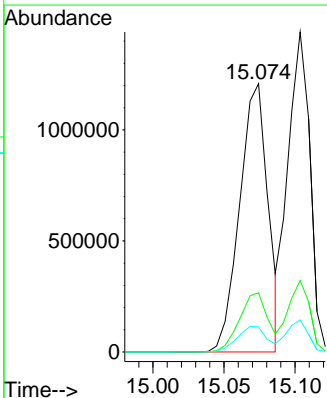
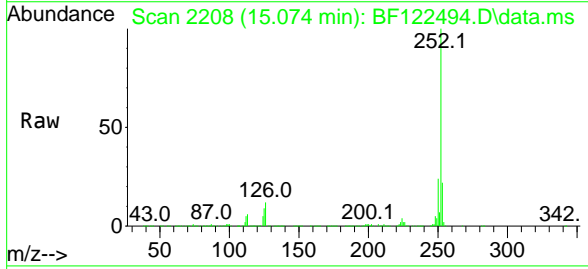
Ion	Ratio	Lower	Upper
276	100		
138	24.0	19.9	29.9
277	25.4	20.4	30.6

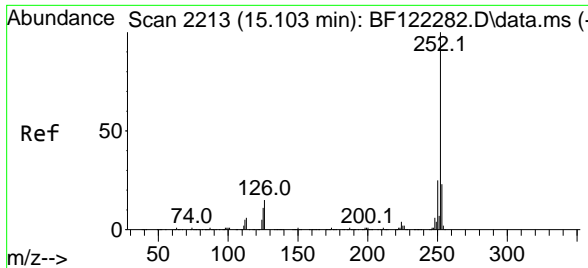


#88
 Benzo(b)fluoranthene
 Concen: 39.61 ng
 RT: 15.074 min Scan# 2208
 Delta R.T. -0.000 min
 Lab File: BF122494.D
 Acq: 27 Nov 2020 10:20

Tgt Ion:252 Resp: 1673281

Ion	Ratio	Lower	Upper
252	100		
253	22.1	18.2	27.2
125	9.4	8.0	12.0

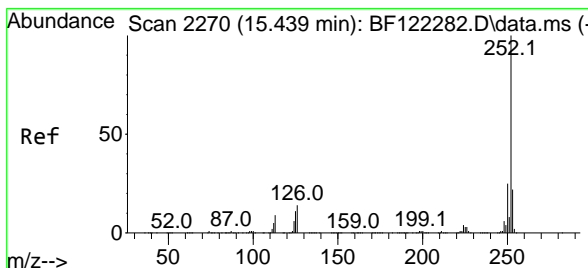
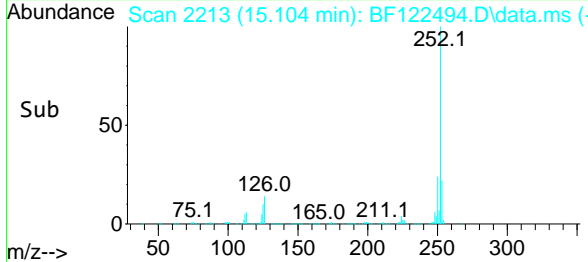
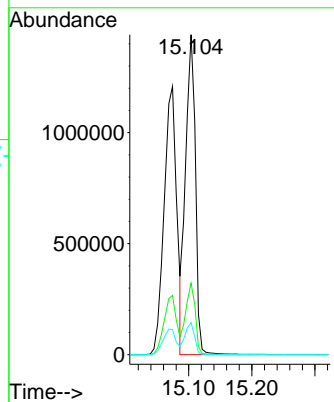
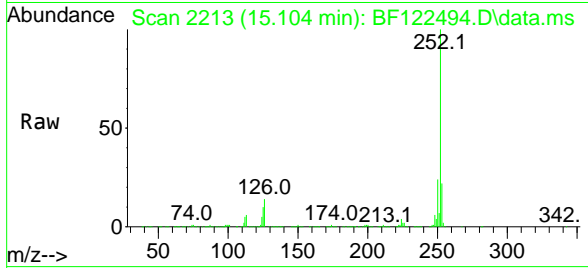




#89
 Benzo(k)fluoranthene
 Concen: 37.96 ng
 RT: 15.104 min Scan# 2213
 Delta R.T. -0.006 min
 Lab File: BF122494.D
 Acq: 27 Nov 2020 10:20

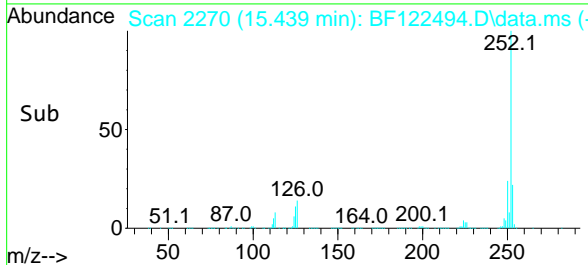
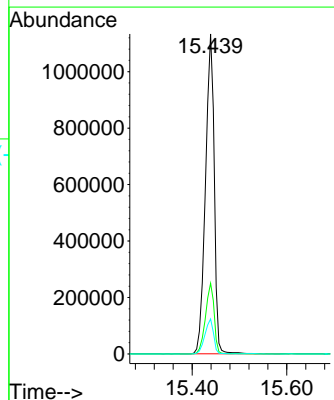
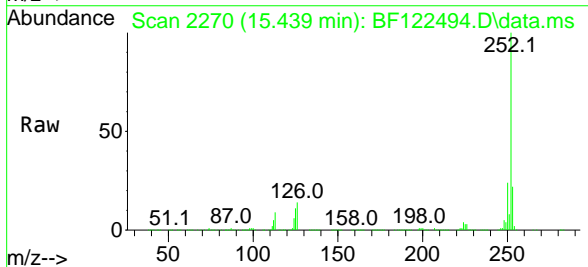
Instrument :
 BNA_F
 ClientSampled :
 SSTDCCC040

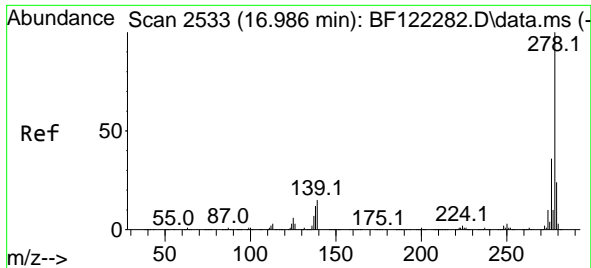
Tgt Ion:252 Resp: 1563780
 Ion Ratio Lower Upper
 252 100
 253 22.4 17.8 26.6
 125 10.0 7.7 11.5



#90
 Benzo(a)pyrene
 Concen: 39.49 ng
 RT: 15.439 min Scan# 2270
 Delta R.T. -0.006 min
 Lab File: BF122494.D
 Acq: 27 Nov 2020 10:20

Tgt Ion:252 Resp: 1454197
 Ion Ratio Lower Upper
 252 100
 253 22.1 17.3 25.9
 125 10.9 8.6 13.0

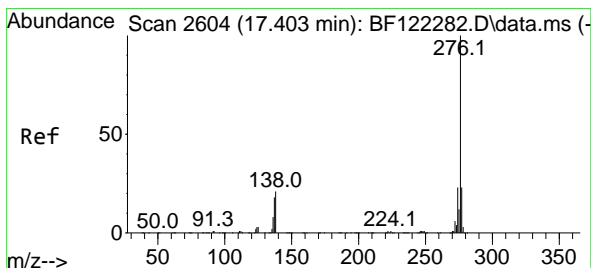
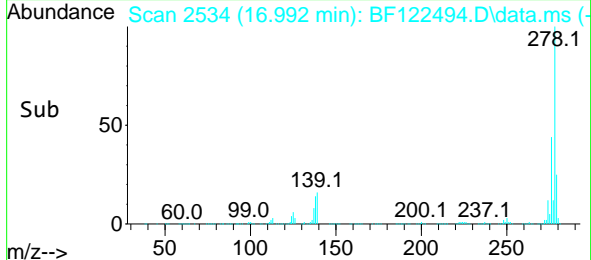
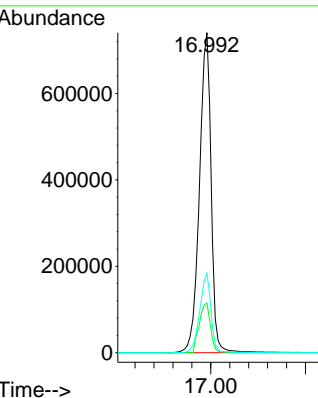
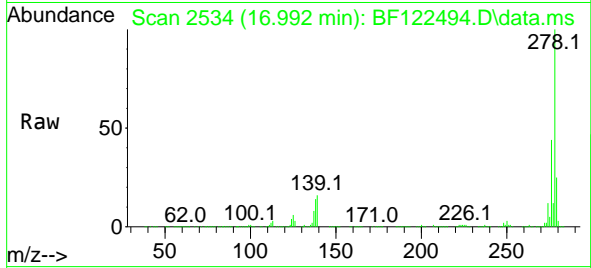




#91
 Dibenzo(a,h)anthracene
 Concen: 38.74 ng
 RT: 16.992 min Scan# 2534
 Delta R.T. -0.000 min
 Lab File: BF122494.D
 Acq: 27 Nov 2020 10:20

Instrument :
 BNA_F
 ClientSampled :
 SSTDCCC040

Tgt Ion:278 Resp: 1270013
 Ion Ratio Lower Upper
 278 100
 139 15.5 13.0 19.4
 279 24.9 19.0 28.4



#92
 Benzo(g,h,i)perylene
 Concen: 40.10 ng
 RT: 17.421 min Scan# 2607
 Delta R.T. -0.000 min
 Lab File: BF122494.D
 Acq: 27 Nov 2020 10:20

Tgt Ion:276 Resp: 1278362
 Ion Ratio Lower Upper
 276 100
 277 24.3 19.4 29.2
 138 20.5 17.8 26.6

