

Data Path : Z:\HPCHEM1\BNA F\DATA\BF113017\  
 Data File : BF101023.D  
 Acq On : 30 Nov 2017 17:57  
 Operator : SJ/JU  
 Sample : PB104614BL  
 Misc :  
 ALS Vial : 4 Sample Multiplier: 1

Instrument :  
 BNA\_F  
 ClientSampleId :  
 PB104614BL

Integration Parameters: rteint.p  
 Integrator: RTE  
 Smoothing : ON Filtering: 5  
 Sampling : 1 Min Area: 3 % of largest Peak  
 Start Thrs: 0.2 Max Peaks: 100  
 Stop Thrs : 0 Peak Location: TOP

If leading or trailing edge < 100 prefer < Baseline drop else tangent >  
 Peak separation: 5

Method : Z:\HPCHEM1\BNA F\METHODS\8270-BF113017.M  
 Title : ASP BNA STANDARDS FOR 5 POINT CALIBRATION

Signal : TIC

peak #	R.T. min	first scan	max scan	last scan	PK TY	peak height	corr. area	corr. % max.	% of total
1	5.069	504	507	514	rBV	41734	46823	4.68%	0.581%
2	5.469	571	575	584	rBV	840693	735459	73.52%	9.130%
3	6.481	742	747	750	rBV	843054	723609	72.34%	8.983%
4	6.622	767	771	774	rBV	897622	785443	78.52%	9.751%
5	6.851	806	810	813	rBV	349293	274208	27.41%	3.404%
6	7.004	832	836	840	rBV	705789	626486	62.63%	7.777%
7	7.416	901	906	909	rBV	495097	466022	46.59%	5.785%
8	8.134	1024	1028	1031	rBV	446628	364676	36.46%	4.527%
9	9.204	1205	1210	1214	rBV	1072102	1000324	100.00%	12.418%
10	9.598	1273	1277	1285	rBV	28385	25006	2.50%	0.310%
11	9.810	1308	1313	1319	rBV2	13780	11874	1.19%	0.147%
12	9.886	1322	1326	1330	rBV	465404	419294	41.92%	5.205%
13	10.680	1457	1461	1464	rBV	593333	548674	54.85%	6.811%
14	11.375	1576	1579	1583	rVB	509389	432238	43.21%	5.366%
15	11.892	1664	1667	1670	rBV	15477	15719	1.57%	0.195%
16	12.963	1844	1849	1852	rVB	1011418	931211	93.09%	11.560%
17	13.845	1995	1999	2004	rBV	57577	59933	5.99%	0.744%
18	14.016	2025	2028	2032	rBV	355620	309099	30.90%	3.837%
19	15.492	2274	2279	2285	rBV	208502	267420	26.73%	3.320%
20	15.986	2358	2363	2368	rBV6	6909	11825	1.18%	0.147%

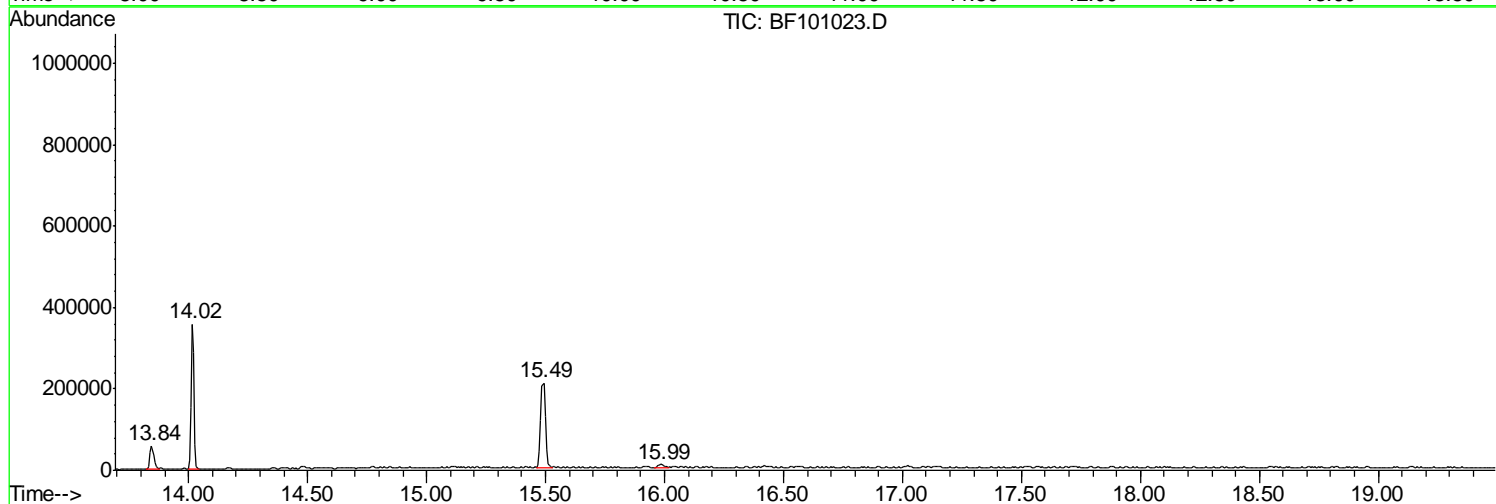
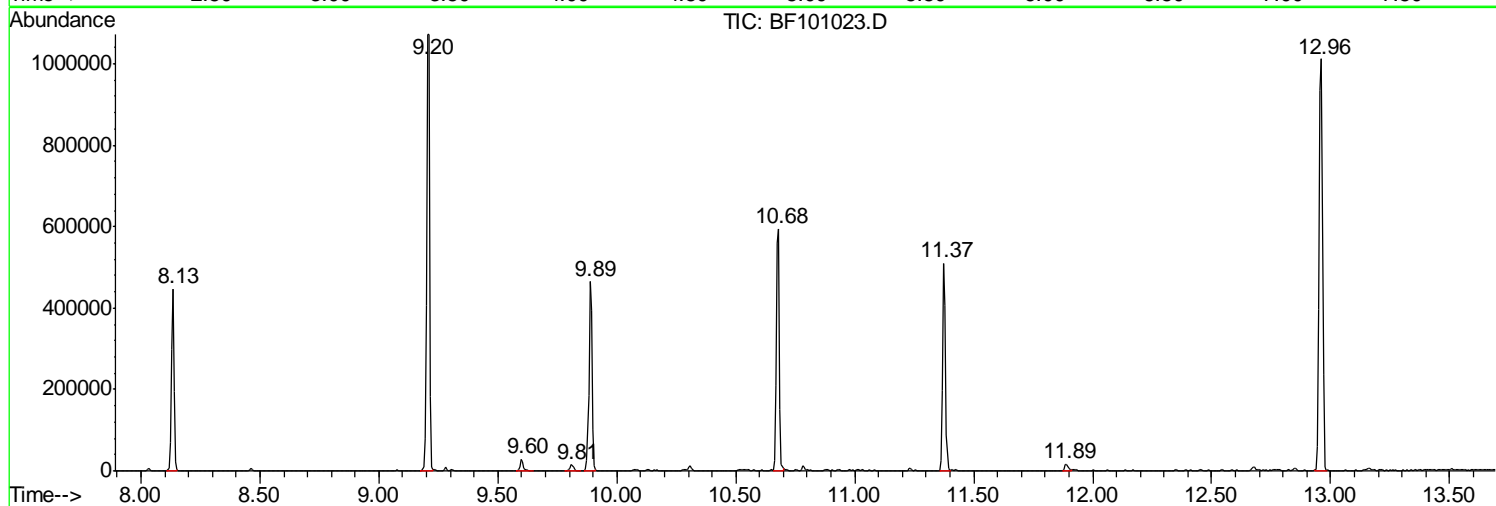
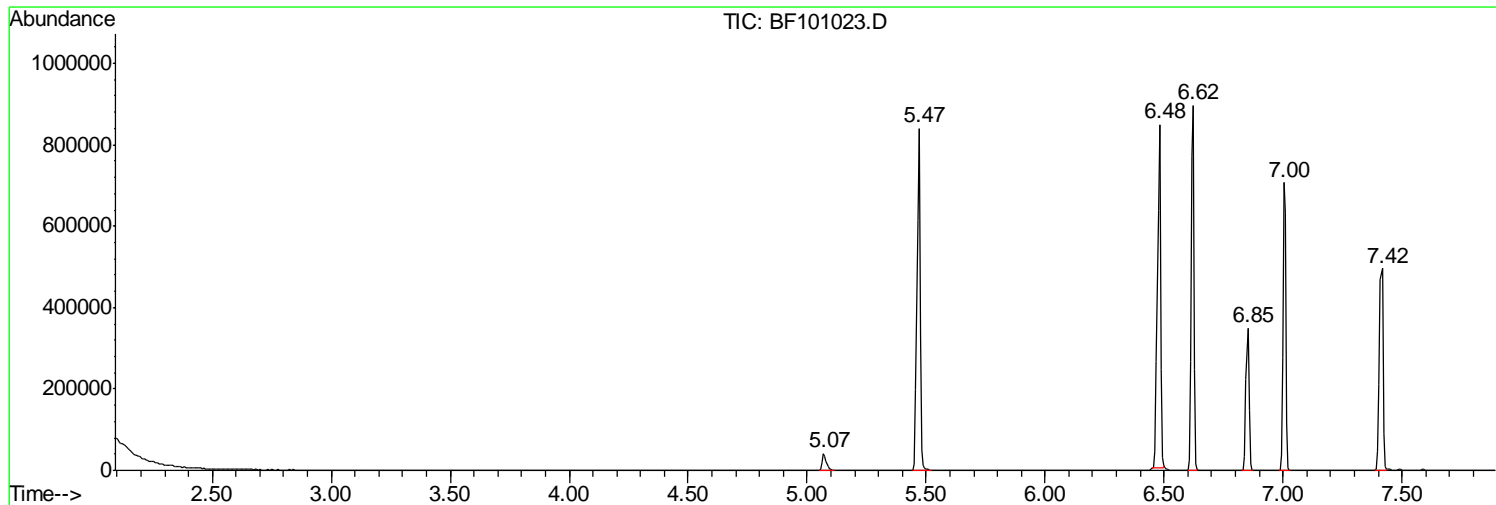
Sum of corrected areas: 8055343

Data Path : Z:\HPCHEM1\BNA F\DATA\BF113017\  
Data File : BF101023.D  
Acq On : 30 Nov 2017 17:57  
Operator : SJ/JU  
Sample : PB104614BL  
Misc :  
ALS Vial : 4 Sample Multiplier: 1

Instrument :  
BNA\_F  
ClientSampled :  
PB104614BL

Quant Method : Z:\HPCHEM1\BNA F\METHODS\8270-BF113017.M  
Quant Title : ASP BNA STANDARDS FOR 5 POINT CALIBRATION

TIC Library : C:\DATABASE\NIST11.L  
TIC Integration Parameters: LSCINT.P



Data Path : Z:\HPCHEM1\BNA F\DATA\BF113017\  
 Data File : BF101023.D  
 Acq On : 30 Nov 2017 17:57  
 Operator : SJ/JU  
 Sample : PB104614BL  
 Misc :  
 ALS Vial : 4 Sample Multiplier: 1

Instrument :  
 BNA\_F  
 ClientSampled :  
 PB104614BL

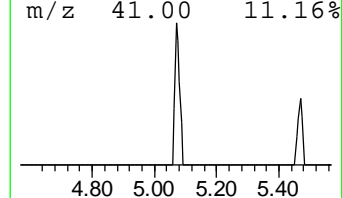
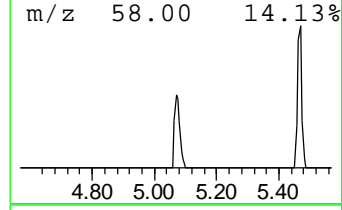
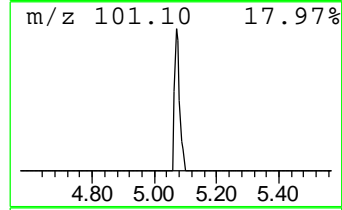
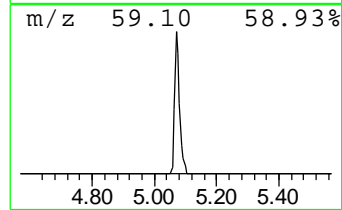
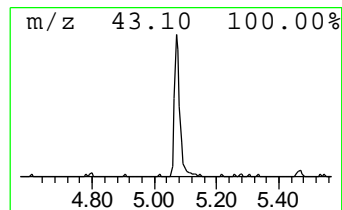
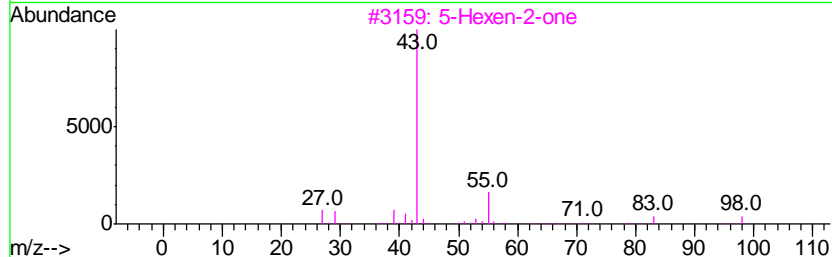
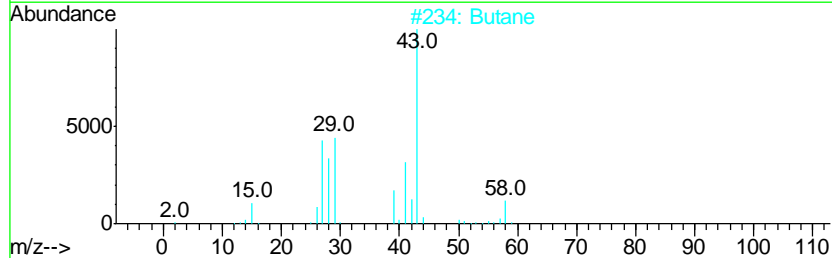
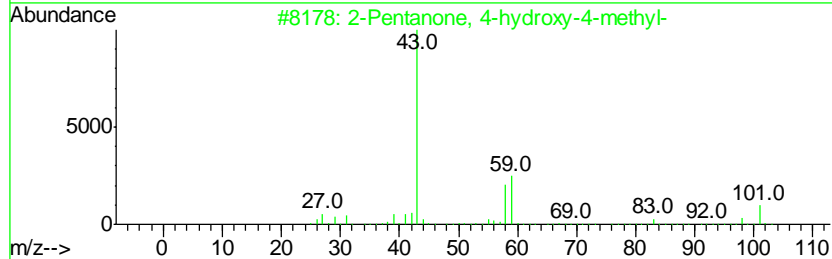
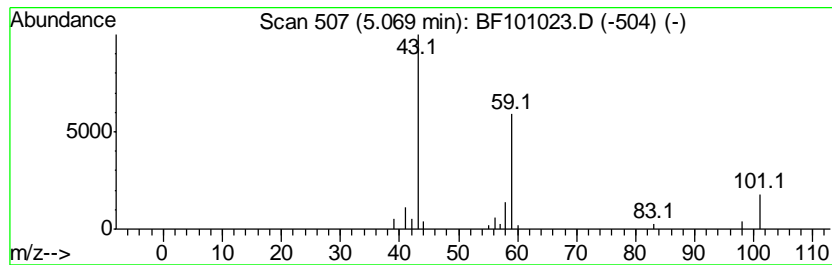
Quant Method : Z:\HPCHEM1\BNA F\METHODS\8270-BF113017.M  
 Quant Title : ASP BNA STANDARDS FOR 5 POINT CALIBRATION

TIC Library : C:\DATABASE\NIST11.L  
 TIC Integration Parameters: LSCINT.P

\*\*\*\*\*  
 Peak Number 1 2-Pentanone, 4-hydroxy-4-me... Concentration Rank 4

R.T.	EstConc	Area	Relative to ISTD	R.T.
5.07	3.42 ng	46823	1,4-Dichlorobenzene-d4	6.85

Hit#	of	Tentative ID	MW	MolForm	CAS#	Qual
1	5	2-Pentanone, 4-hydroxy-4-methyl-	116	C6H12O2	000123-42-2	72
2		Butane	58	C4H10	000106-97-8	9
3		5-Hexen-2-one	98	C6H10O	000109-49-9	9
4		2,3-Butanedione, monooxime	101	C4H7NO2	000057-71-6	9
5		3-Hexanol	102	C6H14O	000623-37-0	9



Data Path : Z:\HPCHEM1\BNA F\DATA\BF113017\  
 Data File : BF101023.D  
 Acq On : 30 Nov 2017 17:57  
 Operator : SJ/JU  
 Sample : PB104614BL  
 Misc :  
 ALS Vial : 4 Sample Multiplier: 1

Instrument :  
 BNA\_F  
 ClientSampleID :  
 PB104614BL

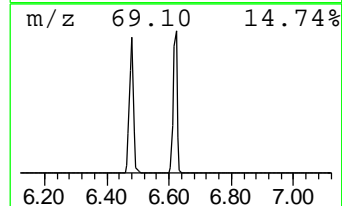
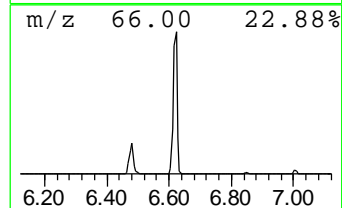
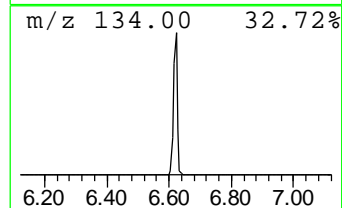
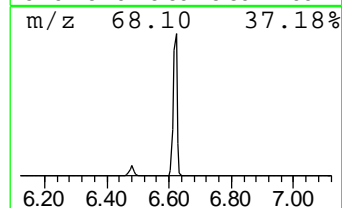
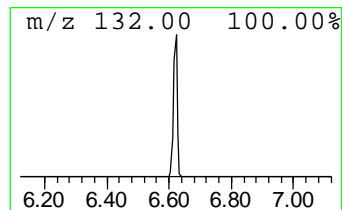
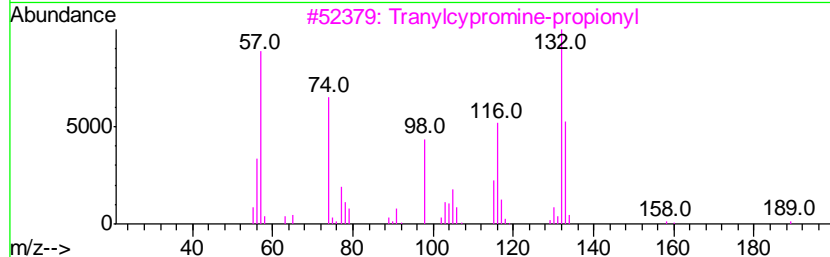
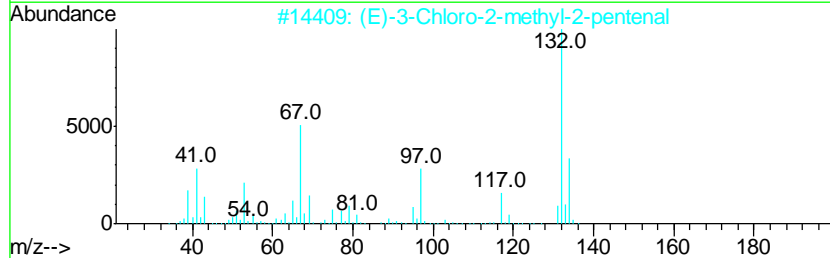
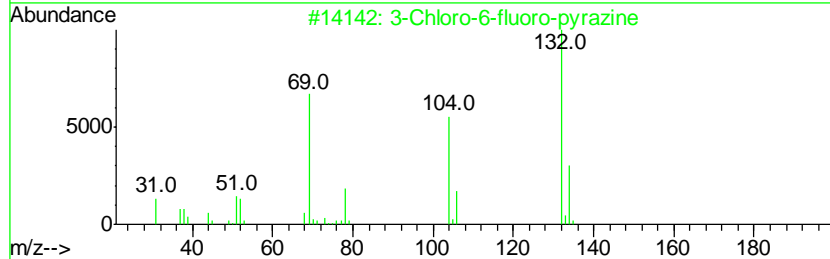
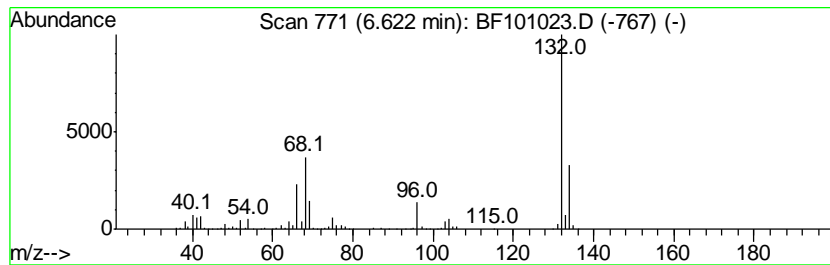
Quant Method : Z:\HPCHEM1\BNA F\METHODS\8270-BF113017.M  
 Quant Title : ASP BNA STANDARDS FOR 5 POINT CALIBRATION

TIC Library : C:\DATABASE\NIST11.L  
 TIC Integration Parameters: LSCINT.P

\*\*\*\*\*  
 Peak Number 2 unknown6.62 Concentration Rank 1

R.T.	EstConc	Area	Relative to ISTD	R.T.
6.62	57.29 ng	785443	1,4-Dichlorobenzene-d4	6.85

Hit#	of	Tentative ID	MW	MolForm	CAS#	Qual
1	5	3-Chloro-6-fluoro-pyrazine	132	C4H2ClFN2	1000146-10-7	35
2		(E)-3-Chloro-2-methyl-2-pentenal	132	C6H9ClO	031357-76-3	12
3		Tranlycypromine-propionyl	189	C12H15NO	1000123-86-3	12
4		Xenon	132	Xe	007440-63-3	9
5		4-Chloro-6-fluoro-pyrimidine	132	C4H2ClFN2	051422-01-6	9



Data Path : Z:\HPCHEM1\BNA F\DATA\BF113017\  
 Data File : BF101023.D  
 Acq On : 30 Nov 2017 17:57  
 Operator : SJ/JU  
 Sample : PB104614BL  
 Misc :  
 ALS Vial : 4 Sample Multiplier: 1

Instrument :  
 BNA\_F  
 ClientSampleID :  
 PB104614BL

Quant Method : Z:\HPCHEM1\BNA F\METHODS\8270-BF113017.M  
 Quant Title : ASP BNA STANDARDS FOR 5 POINT CALIBRATION

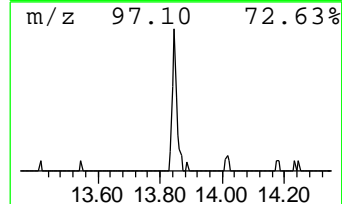
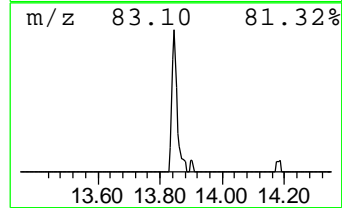
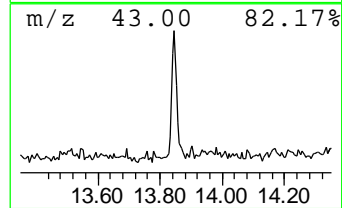
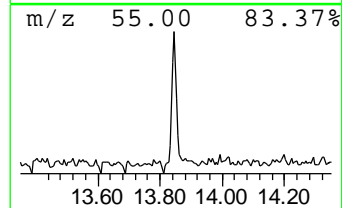
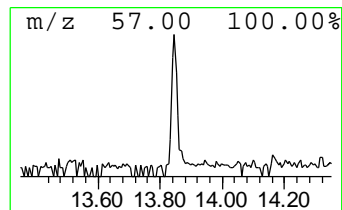
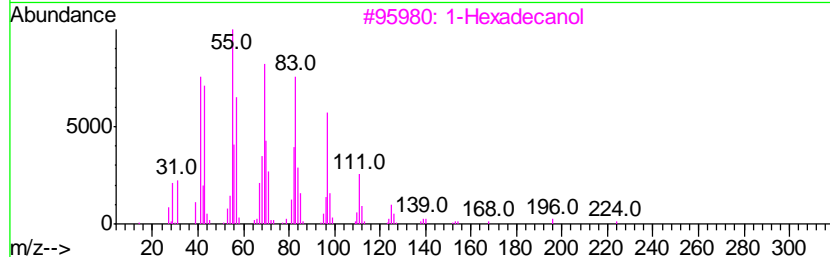
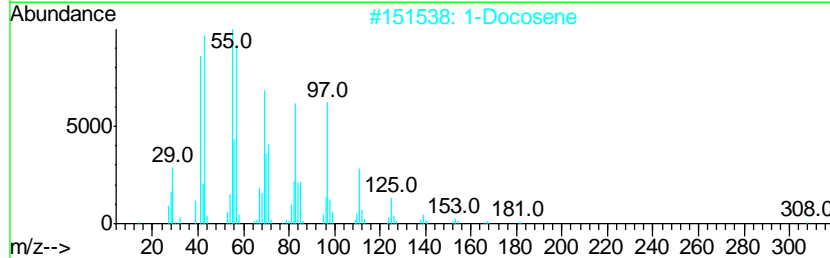
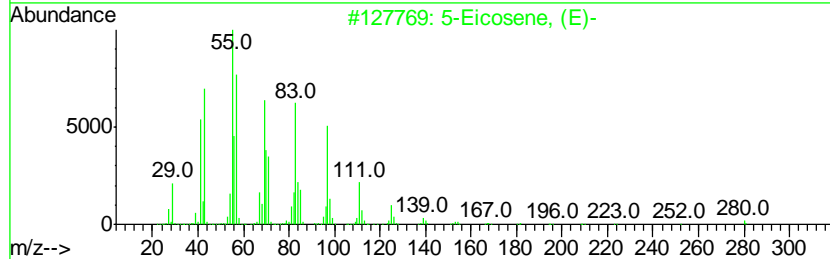
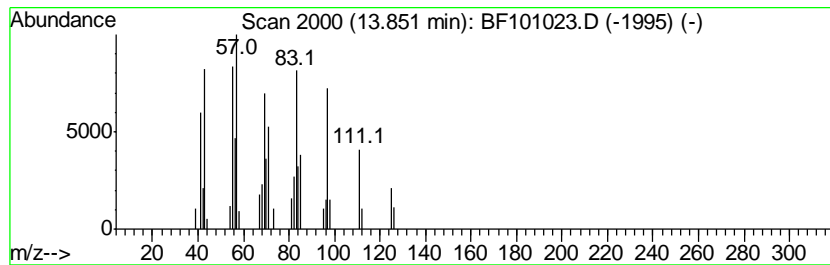
TIC Library : C:\DATABASE\NIST11.L  
 TIC Integration Parameters: LSCINT.P

\*\*\*\*\*  
 Peak Number 4 5-Eicosene, (E)- Concentration Rank 3

R.T.	EstConc	Area	Relative to ISTD	R.T.
13.85	3.88 ng	59933	Chrysene-d12	14.02

Hit#	of	Tentative ID	MW	MolForm	CAS#	Qual
1	5	5-Eicosene, (E)-	280	C20H40	074685-30-6	91
2		1-Docosene	308	C22H44	001599-67-3	91
3		1-Hexadecanol	242	C16H34O	036653-82-4	90
4		Hexadecen-1-ol, trans-9-	240	C16H32O	064437-47-4	87
5		3-Eicosene, (E)-	280	C20H40	074685-33-9	87



Data Path : Z:\HPCHEM1\BNA\_F\DATA\BF113017\  
Data File : BF101023.D  
Acq On : 30 Nov 2017 17:57  
Operator : SJ/JU  
Sample : PB104614BL  
Misc :  
ALS Vial : 4 Sample Multiplier: 1

Instrument :  
BNA\_F  
ClientSampleId :  
PB104614BL

Quant Method : Z:\HPCHEM1\BNA\_F\METHODS\8270-BF113017.M  
Quant Title : ASP BNA STANDARDS FOR 5 POINT CALIBRATION

TIC Library : C:\DATABASE\NIST11.L  
TIC Integration Parameters: LSCINT.P

TIC Top Hit name	RT	EstConc	Units	Response	--Internal Standard--			
					#	RT	Resp	Conc
2-Pentanone, 4-hy...	5.07	3.4	ng	46823	1	6.85	274208	20.0
unknown6.62	6.62	57.3	ng	785443	1	6.85	274208	20.0
5-Eicosene, (E)-	13.85	3.9	ng	59933	5	14.02	309099	20.0