

Data Path : Z:\HPCHEM1\BNA F\DATA\BF113017\
 Data File : BF101042.D
 Acq On : 1 Dec 2017 2:27
 Operator : SJ/JU
 Sample : I6641-05
 Misc :
 ALS Vial : 23 Sample Multiplier: 1

Instrument :
 BNA_F
 ClientSampleId :
 TP-3

Integration Parameters: rteint.p
 Integrator: RTE
 Smoothing : ON
 Sampling : 1
 Start Thrs: 0.2
 Stop Thrs : 0

Filtering: 5
 Min Area: 3 % of largest Peak
 Max Peaks: 100
 Peak Location: TOP

If leading or trailing edge < 100 prefer < Baseline drop else tangent >
 Peak separation: 5

Method : Z:\HPCHEM1\BNA F\METHODS\8270-BF113017.M
 Title : ASP BNA STANDARDS FOR 5 POINT CALIBRATION

Signal : TIC

peak #	R.T. min	first scan	max scan	last scan	PK TY	peak height	corr. area	corr. % max.	% of total
1	5.098	508	512	524	rBB	69158	108628	5.92%	0.775%
2	5.487	572	578	581	rBV	1448968	1618178	88.21%	11.546%
3	6.492	743	749	763	rBV	1362762	1735338	94.59%	12.382%
4	6.628	767	772	775	rBV	1722230	1691327	92.19%	12.068%
5	6.851	807	810	814	rBV	397232	351757	19.17%	2.510%
6	7.010	833	837	841	rBV	1388904	1319701	71.94%	9.416%
7	7.422	902	907	910	rBV	1000250	1015453	55.35%	7.245%
8	8.133	1024	1028	1032	rBV	499849	447339	24.38%	3.192%
9	9.216	1206	1212	1215	rBV	1940907	1834526	100.00%	13.090%
10	9.604	1274	1278	1280	rBV	78082	65731	3.58%	0.469%
11	9.810	1309	1313	1317	rBV2	21179	18712	1.02%	0.134%
12	9.892	1323	1327	1331	rBV	555822	449203	24.49%	3.205%
13	10.686	1457	1462	1465	rBV	929337	886426	48.32%	6.325%
14	10.786	1476	1479	1483	rBV	17057	19323	1.05%	0.138%
15	11.380	1576	1580	1583	rBV	462016	375915	20.49%	2.682%
16	11.898	1664	1668	1671	rBV2	32129	28703	1.56%	0.205%
17	12.963	1845	1849	1853	rBV	1311184	1260723	68.72%	8.995%
18	13.845	1996	1999	2010	rVB	123625	131859	7.19%	0.941%
19	14.021	2025	2029	2033	rBV	397166	344391	18.77%	2.457%
20	14.857	2167	2171	2174	rVB	18187	22762	1.24%	0.162%
21	15.498	2275	2280	2286	rBV	222263	265351	14.46%	1.893%
22	15.986	2359	2363	2368	rBV6	15363	23711	1.29%	0.169%

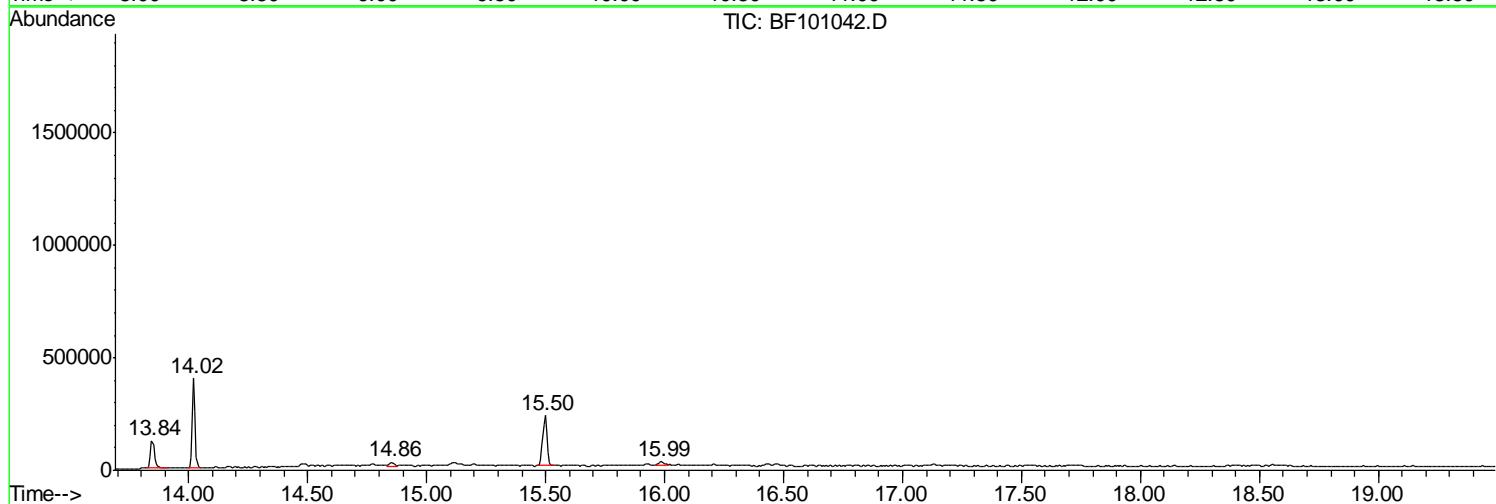
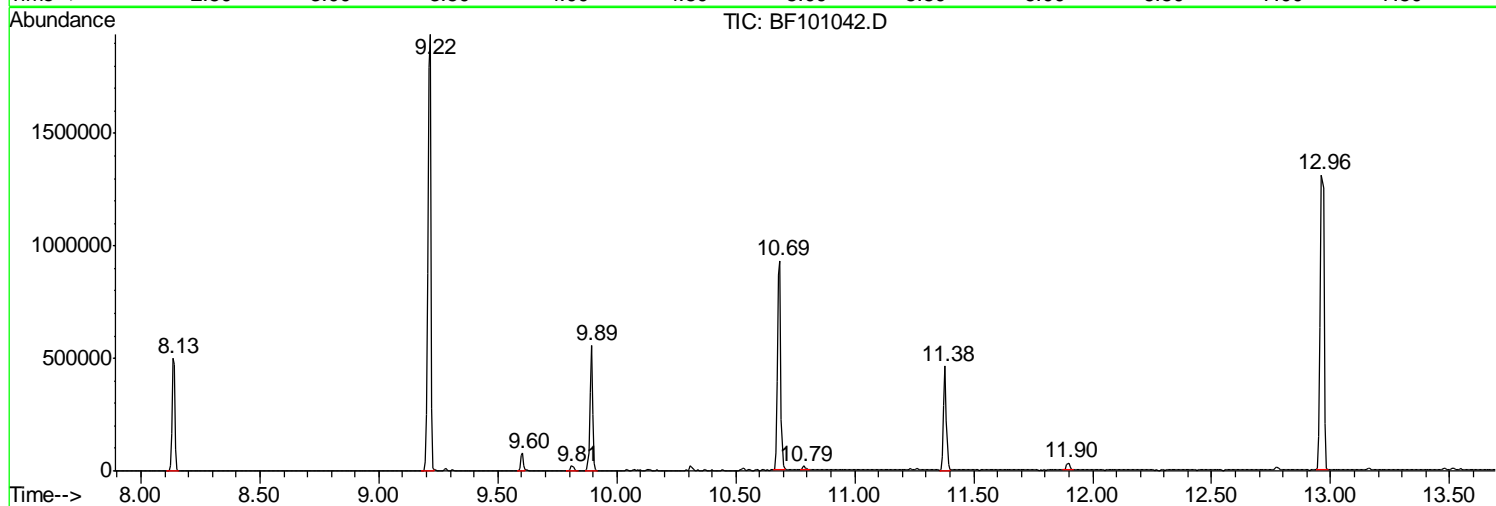
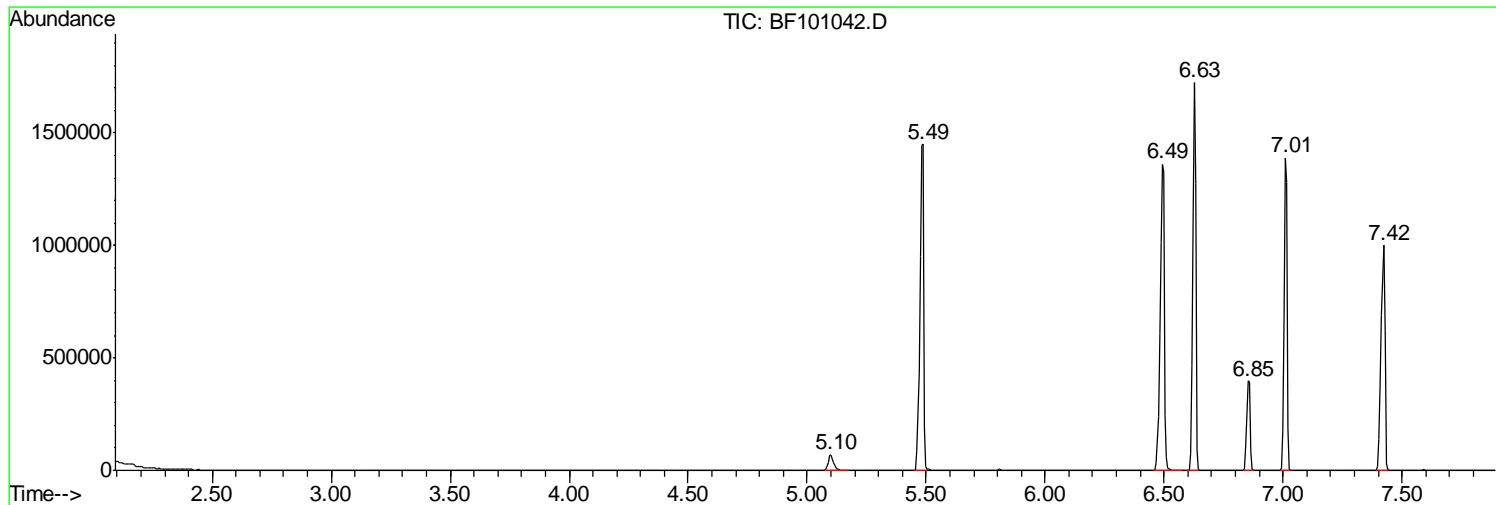
Sum of corrected areas: 14015057

Data Path : Z:\HPCHEM1\BNA F\DATA\BF113017\
Data File : BF101042.D
Acq On : 1 Dec 2017 2:27
Operator : SJ/JU
Sample : I6641-05
Misc :
ALS Vial : 23 Sample Multiplier: 1

Instrument :
BNA_F
ClientSampleId :
TP-3

Quant Method : Z:\HPCHEM1\BNA F\METHODS\8270-BF113017.M
Quant Title : ASP BNA STANDARDS FOR 5 POINT CALIBRATION

TIC Library : C:\DATABASE\NIST11.L
TIC Integration Parameters: LSCINT.P



Data Path : Z:\HPCHEM1\BNA F\DATA\BF113017\
 Data File : BF101042.D
 Acq On : 1 Dec 2017 2:27
 Operator : SJ/JU
 Sample : I6641-05
 Misc :
 ALS Vial : 23 Sample Multiplier: 1

Instrument :
 BNA_F
 ClientSampled :
 TP-3

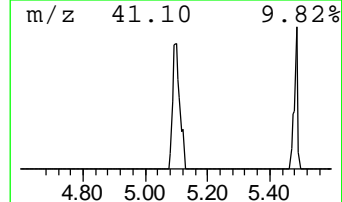
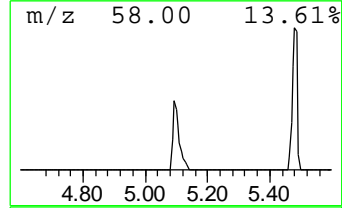
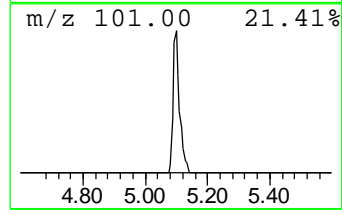
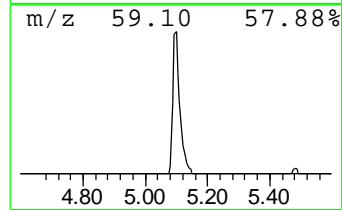
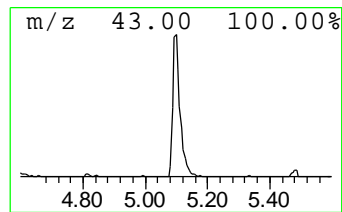
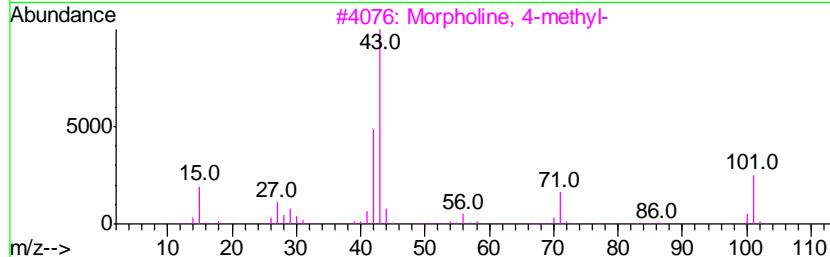
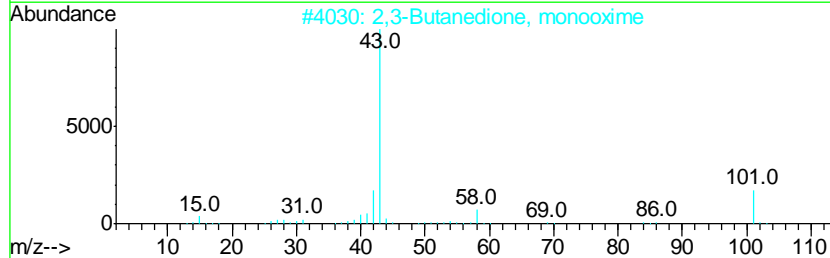
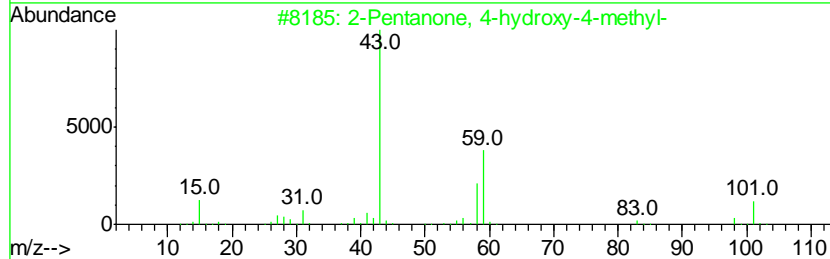
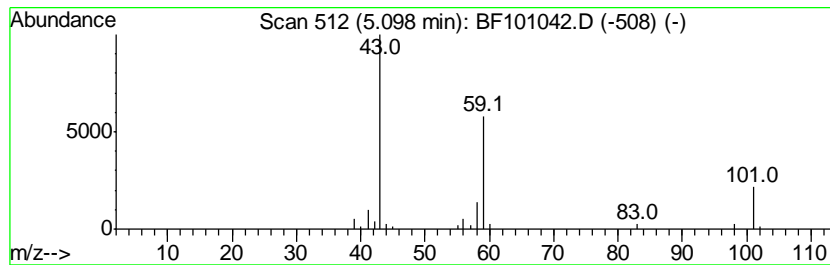
Quant Method : Z:\HPCHEM1\BNA F\METHODS\8270-BF113017.M
 Quant Title : ASP BNA STANDARDS FOR 5 POINT CALIBRATION

TIC Library : C:\DATABASE\NIST11.L
 TIC Integration Parameters: LSCINT.P

 Peak Number 1 2-Pentanone, 4-hydroxy-4-me... Concentration Rank 4

R.T.	EstConc	Area	Relative to ISTD	R.T.
5.10	6.18 ng	108628	1,4-Dichlorobenzene-d4	6.86

Hit#	of	Tentative ID	MW	MolForm	CAS#	Qual
1	5	2-Pentanone, 4-hydroxy-4-methyl-	116	C6H12O2	000123-42-2	72
2		2,3-Butanedione, monooxime	101	C4H7NO2	000057-71-6	17
3		Morpholine, 4-methyl-	101	C5H11NO	000109-02-4	9
4		Butane, 1-ethoxy-	102	C6H14O	000628-81-9	9
5		3-Pentanol	88	C5H12O	000584-02-1	9



Data Path : Z:\HPCHEM1\BNA F\DATA\BF113017\
 Data File : BF101042.D
 Acq On : 1 Dec 2017 2:27
 Operator : SJ/JU
 Sample : I6641-05
 Misc :
 ALS Vial : 23 Sample Multiplier: 1

Instrument :
 BNA_F
 ClientSampleID :
 TP-3

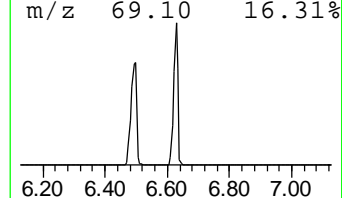
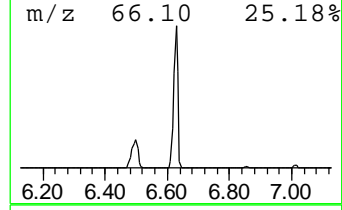
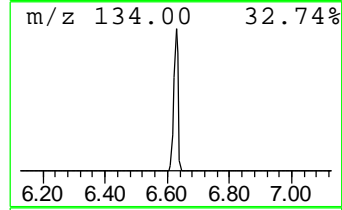
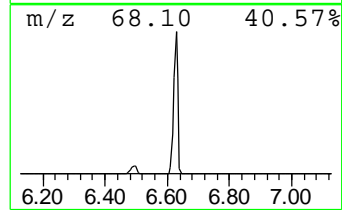
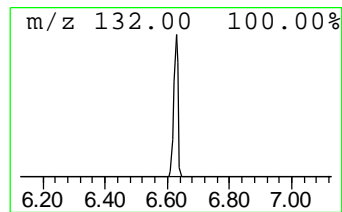
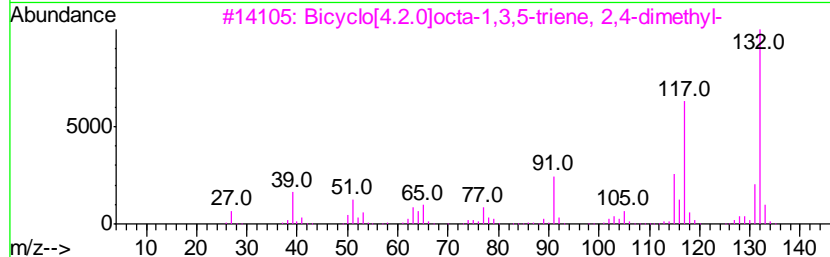
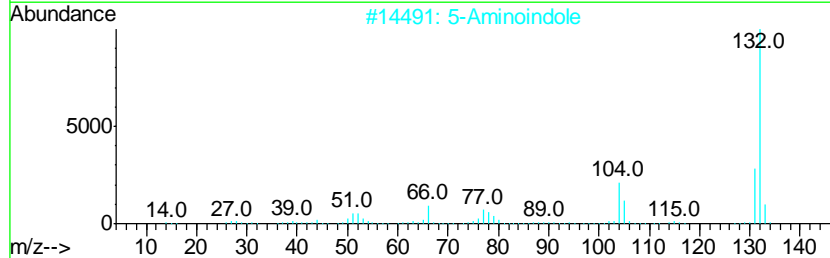
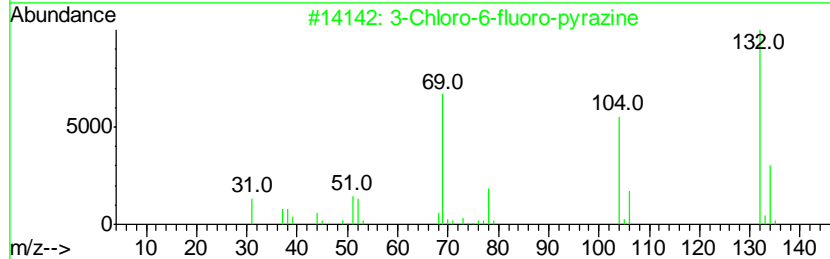
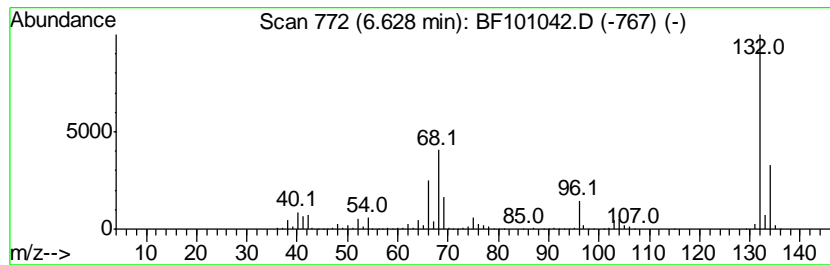
Quant Method : Z:\HPCHEM1\BNA F\METHODS\8270-BF113017.M
 Quant Title : ASP BNA STANDARDS FOR 5 POINT CALIBRATION

TIC Library : C:\DATABASE\NIST11.L
 TIC Integration Parameters: LSCINT.P

 Peak Number 2 unknown6.63 Concentration Rank 1

R.T.	EstConc	Area	Relative to ISTD	R.T.
6.63	96.16 ng	1691330	1,4-Dichlorobenzene-d4	6.86

Hit#	of	Tentative ID	MW	MolForm	CAS#	Qual
1	5	3-Chloro-6-fluoro-pyrazine	132	C4H2ClFN2	1000146-10-7	27
2		5-Aminoindole	132	C8H8N2	005192-03-0	12
3		Bicyclo[4.2.0]octa-1,3,5-triene,...	132	C10H12	028749-81-7	9
4		4-Methylpyrrolo[1,2-a]pyrazine	132	C8H8N2	064608-60-2	9
5		1H-Benzimidazole, 2-methyl-	132	C8H8N2	000615-15-6	9



Data Path : Z:\HPCHEM1\BNA F\DATA\BF113017\
 Data File : BF101042.D
 Acq On : 1 Dec 2017 2:27
 Operator : SJ/JU
 Sample : I6641-05
 Misc :
 ALS Vial : 23 Sample Multiplier: 1

Instrument :
 BNA_F
 ClientSampleID :
 TP-3

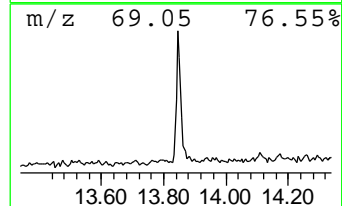
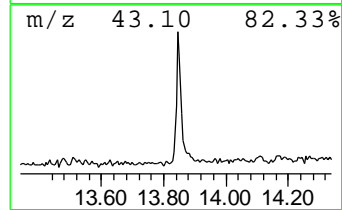
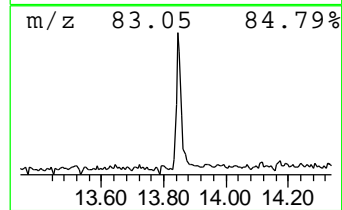
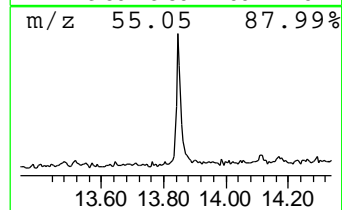
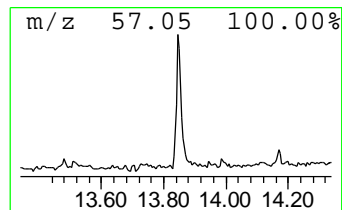
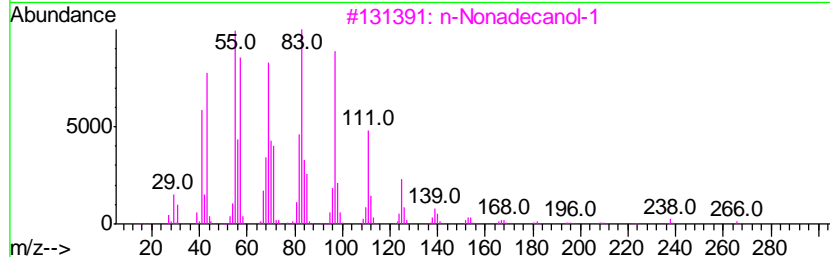
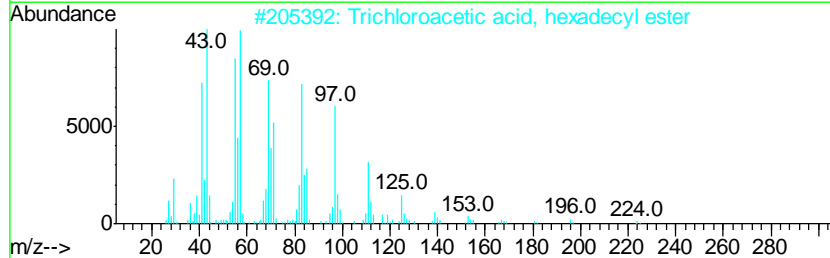
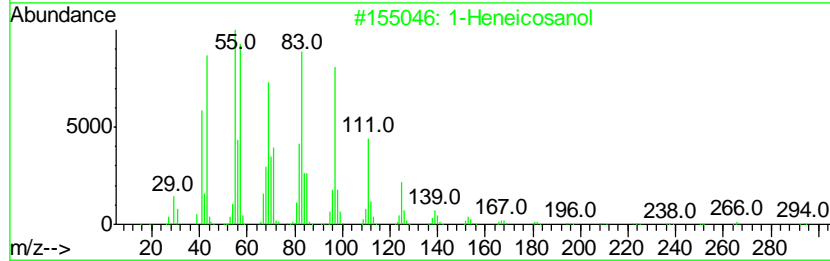
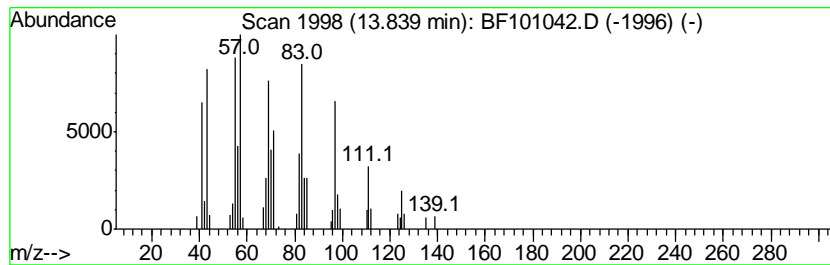
Quant Method : Z:\HPCHEM1\BNA F\METHODS\8270-BF113017.M
 Quant Title : ASP BNA STANDARDS FOR 5 POINT CALIBRATION

TIC Library : C:\DATABASE\NIST11.L
 TIC Integration Parameters: LSCINT.P

 Peak Number 4 1-Heneicosanol Concentration Rank 3

R.T.	EstConc	Area	Relative to ISTD	R.T.
13.84	7.66 ng	131859	Chrysene-d12	14.02

Hit#	of	Tentative ID	MW	MolForm	CAS#	Qual
1	5	1-Heneicosanol	312	C21H44O	015594-90-8	94
2		Trichloroacetic acid, hexadecyl ...	386	C18H33Cl3O2	074339-54-1	94
3		n-Nonadecanol-1	284	C19H40O	001454-84-8	94
4		Trifluoroacetoxy hexadecane	338	C18H33F3O2	006222-03-3	93
5		1-Nonadecene	266	C19H38	018435-45-5	91



Data Path : Z:\HPCHEM1\BNA_F\DATA\BF113017\
Data File : BF101042.D
Acq On : 1 Dec 2017 2:27
Operator : SJ/JU
Sample : I6641-05
Misc :
ALS Vial : 23 Sample Multiplier: 1

Instrument :
BNA_F
ClientSampleId :
TP-3

Quant Method : Z:\HPCHEM1\BNA_F\METHODS\8270-BF113017.M
Quant Title : ASP BNA STANDARDS FOR 5 POINT CALIBRATION

TIC Library : C:\DATABASE\NIST11.L
TIC Integration Parameters: LSCINT.P

TIC Top Hit name	RT	EstConc	Units	Response	--Internal Standard--			
					#	RT	Resp	Conc
2-Pentanone, 4-hy...	5.10	6.2	ng	108628	1	6.86	351757	20.0
unknown6.63	6.63	96.2	ng	1691330	1	6.86	351757	20.0
1-Heneicosanol	13.84	7.7	ng	131859	5	14.02	344391	20.0