

Data Path : Z:\HPCHEM1\BNA F\DATA\BF120516\
 Data File : BF091427.D
 Acq On : 5 Dec 2016 19:32
 Operator : UM/SJ
 Sample : H5838-06
 Misc :
 ALS Vial : 11 Sample Multiplier: 1

Instrument :
 BNA_F
 ClientSampleId :
 MW-15

Integration Parameters: rteint.p
 Integrator: RTE
 Smoothing : ON Filtering: 5
 Sampling : 1 Min Area: 3 % of largest Peak
 Start Thrs: 0.2 Max Peaks: 100
 Stop Thrs : 0 Peak Location: TOP

If leading or trailing edge < 100 prefer < Baseline drop else tangent >
 Peak separation: 5

Method : Z:\HPCHEM1\BNA F\METHODS\8270-BF112916.M
 Title : ASP BNA STANDARDS FOR 5 POINT CALIBRATION

Signal : TIC

peak #	R.T. min	first scan	max scan	last scan	PK TY	peak height	corr. area	corr. % max.	% of total
1	5.030	237	240	243	rBV	426009	519325	8.02%	1.386%
2	5.441	274	276	279	rBV	1630098	1970656	30.43%	5.261%
3	6.470	364	366	369	rBV	1321496	1142340	17.64%	3.050%
4	6.619	376	379	381	rBV	3573890	3957159	61.10%	10.564%
5	6.847	397	399	401	rBV	1030040	853827	13.18%	2.279%
6	7.007	410	413	415	rBV	3869419	3592362	55.47%	9.590%
7	7.407	445	448	451	rBV	1998152	3068315	47.38%	8.191%
8	8.127	509	511	514	rBV	869153	1064465	16.44%	2.842%
9	9.213	603	606	608	rBV	5476861	5320195	82.15%	14.203%
10	9.888	662	665	667	rBV	1483098	1354650	20.92%	3.616%
11	10.676	731	734	736	rBV	3929925	4043775	62.44%	10.795%
12	11.362	792	794	797	rVB	1165137	1465087	22.62%	3.911%
13	11.899	839	841	843	rBV	114086	111216	1.72%	0.297%
14	12.688	907	910	916	rBV	131645	175950	2.72%	0.470%
15	12.962	931	934	936	rBV	5290561	6476362	100.00%	17.289%
16	14.002	1022	1025	1027	rBV	1236236	1448935	22.37%	3.868%
17	15.420	1146	1149	1152	rBV	647486	893929	13.80%	2.386%

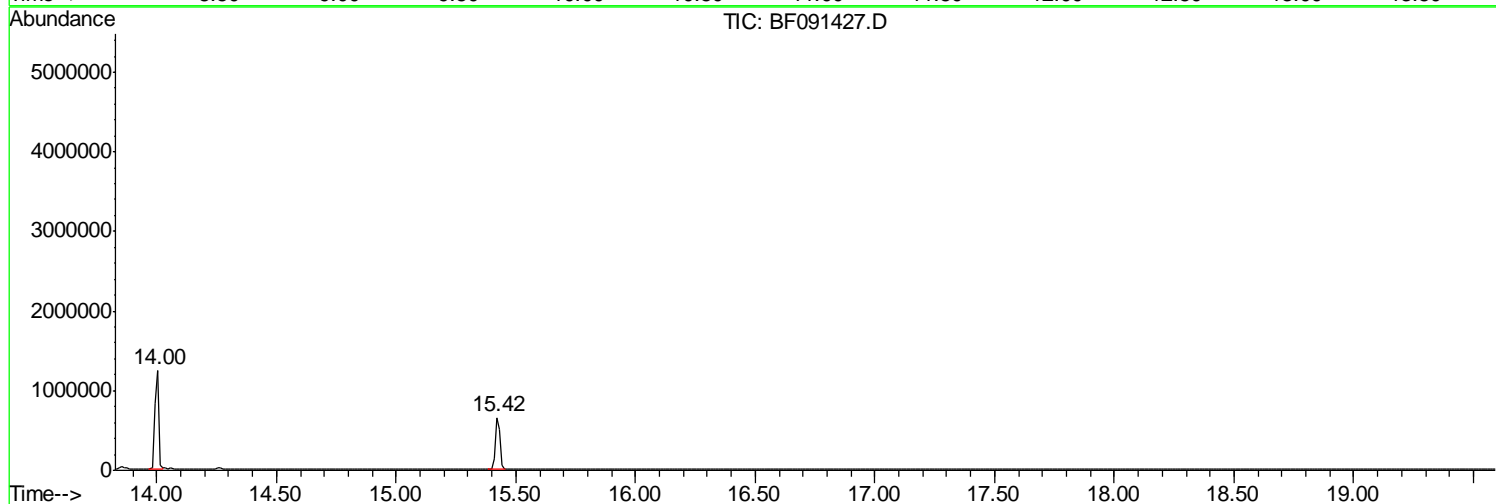
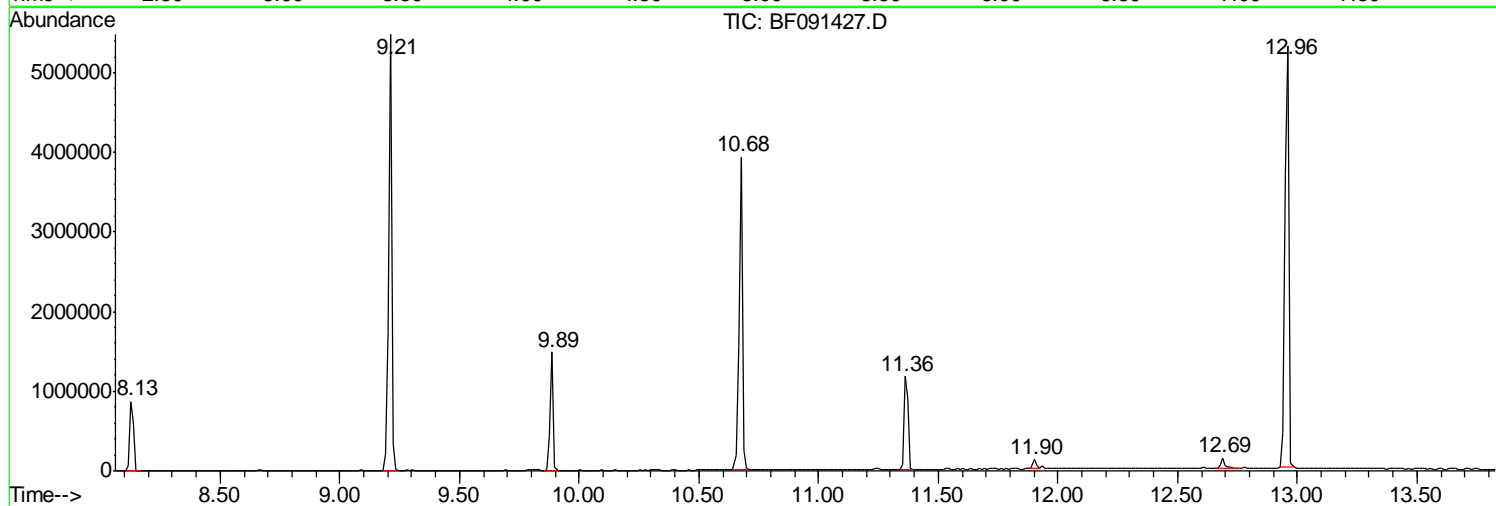
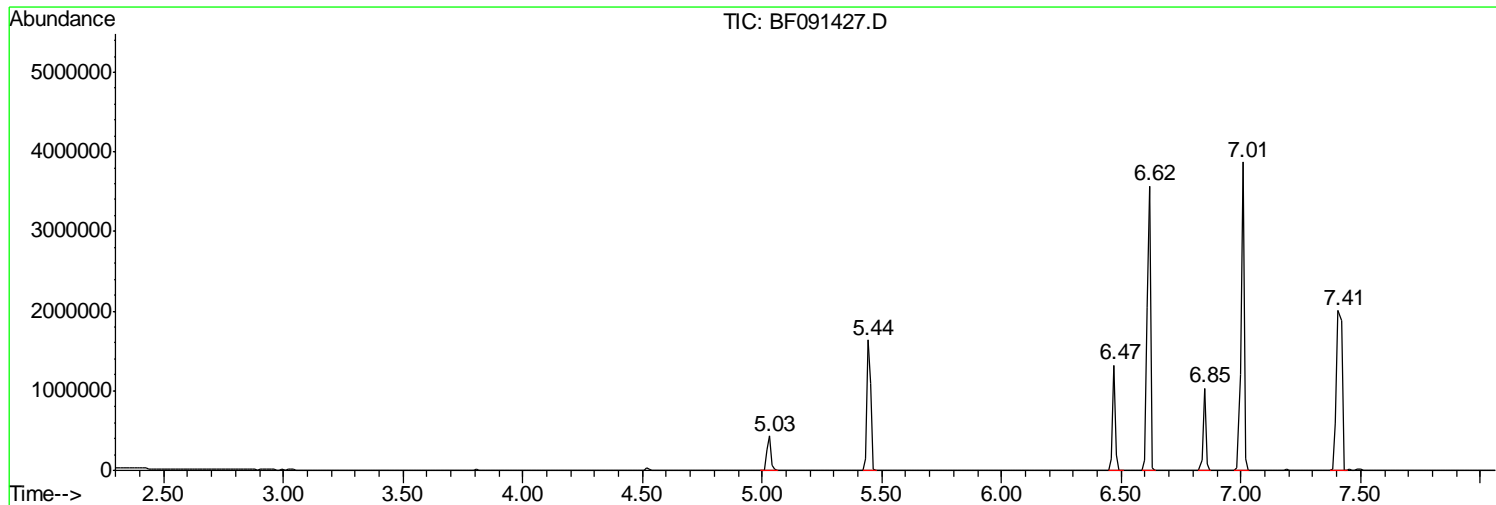
Sum of corrected areas: 37458548

Data Path : Z:\HPCHEM1\BNA F\DATA\BF120516\
Data File : BF091427.D
Acq On : 5 Dec 2016 19:32
Operator : UM/SJ
Sample : H5838-06
Misc :
ALS Vial : 11 Sample Multiplier: 1

Instrument :
BNA_F
ClientSampled :
MW-15

Quant Method : Z:\HPCHEM1\BNA F\METHODS\8270-BF112916.M
Quant Title : ASP BNA STANDARDS FOR 5 POINT CALIBRATION

TIC Library : C:\DATABASE\NIST02.L
TIC Integration Parameters: LSCINT.P



Data Path : Z:\HPCHEM1\BNA F\DATA\BF120516\
 Data File : BF091427.D
 Acq On : 5 Dec 2016 19:32
 Operator : UM/SJ
 Sample : H5838-06
 Misc :
 ALS Vial : 11 Sample Multiplier: 1

Instrument :
 BNA_F
 ClientSampled :
 MW-15

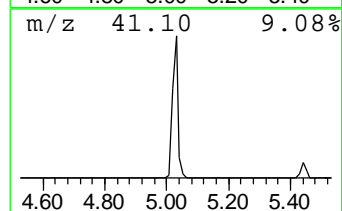
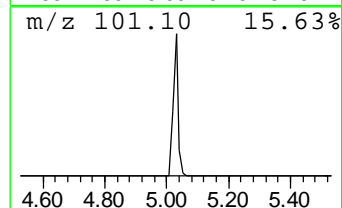
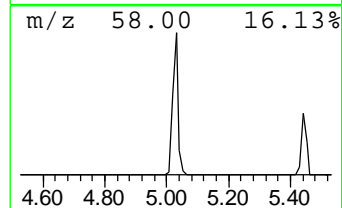
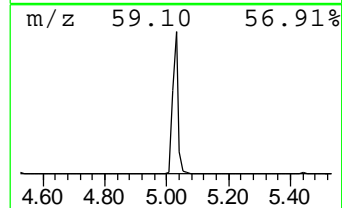
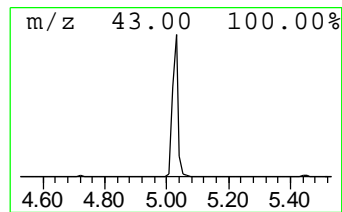
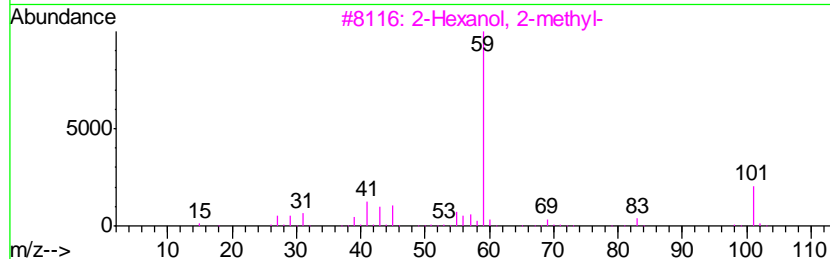
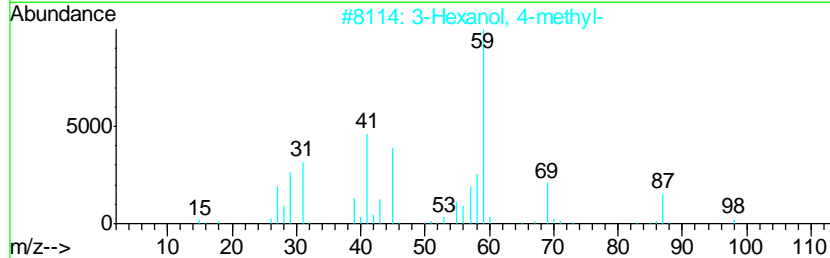
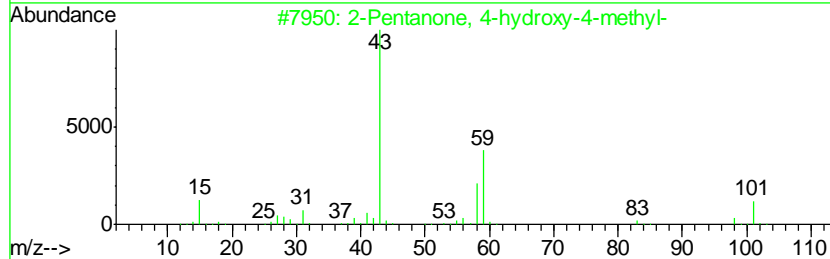
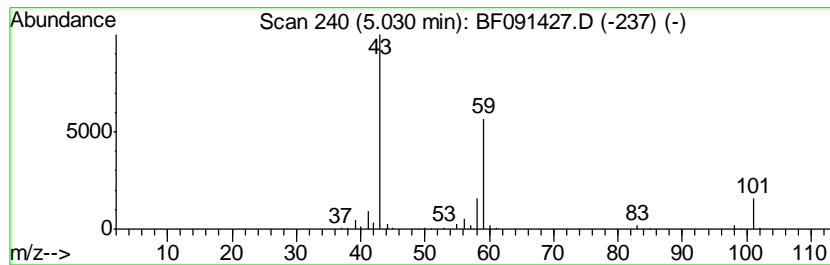
Quant Method : Z:\HPCHEM1\BNA F\METHODS\8270-BF112916.M
 Quant Title : ASP BNA STANDARDS FOR 5 POINT CALIBRATION

TIC Library : C:\DATABASE\NIST02.L
 TIC Integration Parameters: LSCINT.P

 Peak Number 1 2-Pentanone, 4-hydroxy-4-me... Concentration Rank 3

R.T.	EstConc	Area	Relative to ISTD	R.T.
5.03	12.16 ng	519325	1,4-Dichlorobenzene-d4	6.85

Hit#	of	Tentative ID	MW	MolForm	CAS#	Qual
1	5	2-Pentanone, 4-hydroxy-4-methyl-	116	C6H12O2	000123-42-2	59
2		3-Hexanol, 4-methyl-	116	C7H16O	000615-29-2	33
3		2-Hexanol, 2-methyl-	116	C7H16O	000625-23-0	33
4		Acetic acid, cyano-, 1,1-dimethyl...	141	C7H11NO2	001116-98-9	25
5		Acetic acid, 1,1-dimethylethyl e...	116	C6H12O2	000540-88-5	17



Data Path : Z:\HPCHEM1\BNA F\DATA\BF120516\
 Data File : BF091427.D
 Acq On : 5 Dec 2016 19:32
 Operator : UM/SJ
 Sample : H5838-06
 Misc :
 ALS Vial : 11 Sample Multiplier: 1

Instrument :
 BNA_F
 ClientSampled :
 MW-15

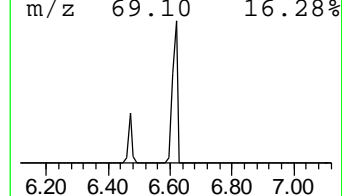
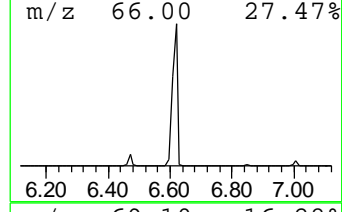
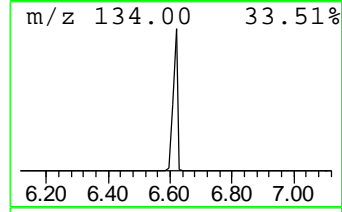
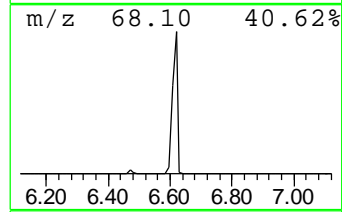
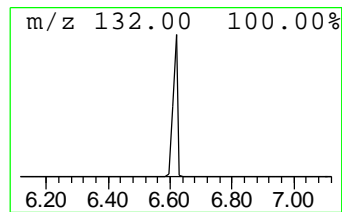
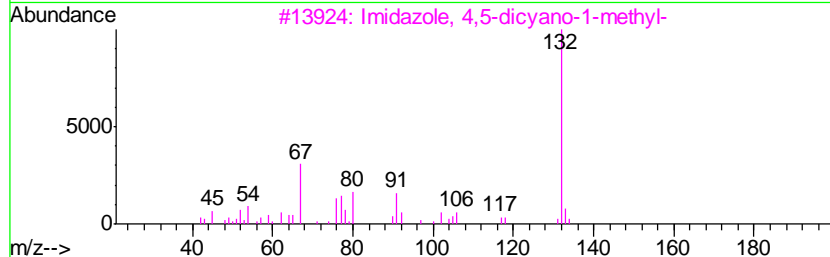
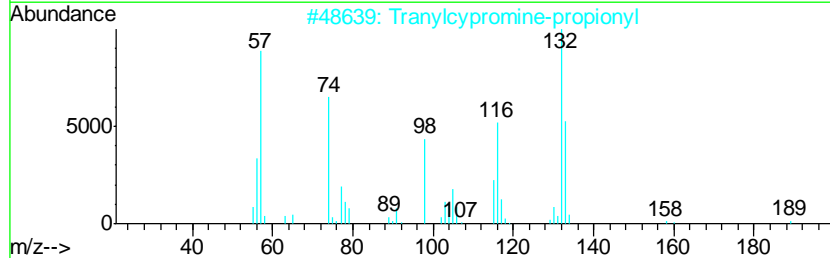
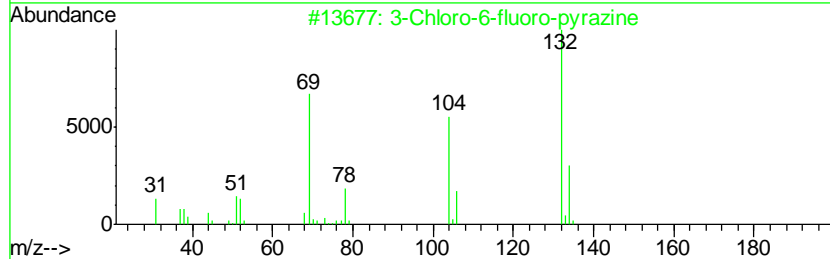
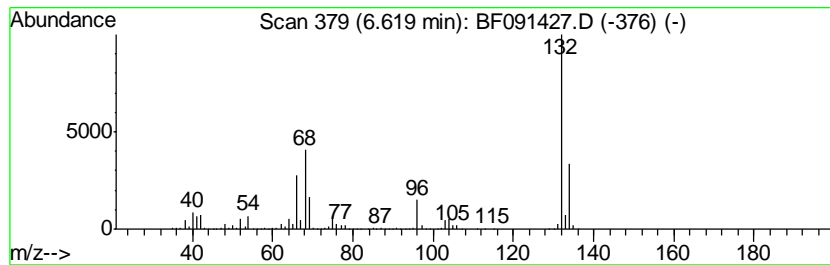
Quant Method : Z:\HPCHEM1\BNA F\METHODS\8270-BF112916.M
 Quant Title : ASP BNA STANDARDS FOR 5 POINT CALIBRATION

TIC Library : C:\DATABASE\NIST02.L
 TIC Integration Parameters: LSCINT.P

 Peak Number 2 unknown6.62 Concentration Rank 1

R.T.	EstConc	Area	Relative to ISTD	R.T.
6.62	92.69 ng	3957160	1,4-Dichlorobenzene-d4	6.85

Hit#	of	Tentative ID	MW	MolForm	CAS#	Qual
1	5	3-Chloro-6-fluoro-pyrazine	132	C4H2ClFN2	1000146-10-7	27
2		Tranlycypromine-propionyl	189	C12H15NO	1000123-86-3	10
3		Imidazole, 4,5-dicyano-1-methyl-	132	C6H4N4	019485-35-9	9
4		Benzene, 1,3,5-trifluoro-	132	C6H3F3	000372-38-3	9
5		(E)-3-Chloro-2-methyl-2-pentenal	132	C6H9ClO	031357-76-3	9



Data Path : Z:\HPCHEM1\BNA F\DATA\BF120516\
 Data File : BF091427.D
 Acq On : 5 Dec 2016 19:32
 Operator : UM/SJ
 Sample : H5838-06
 Misc :
 ALS Vial : 11 Sample Multiplier: 1

Instrument :
 BNA_F
 ClientSampled :
 MW-15

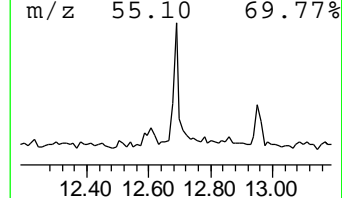
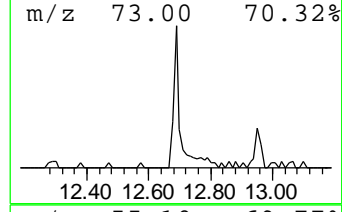
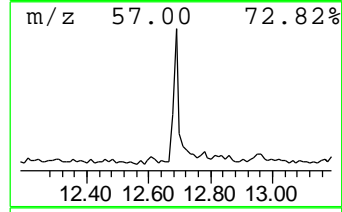
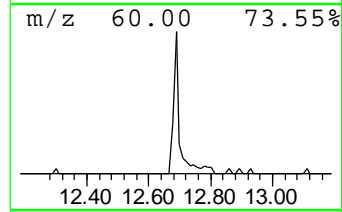
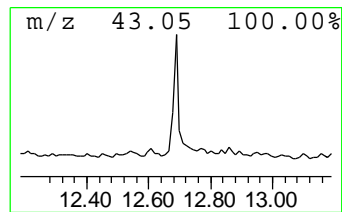
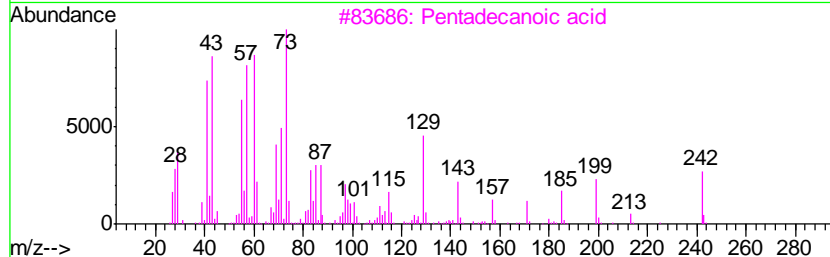
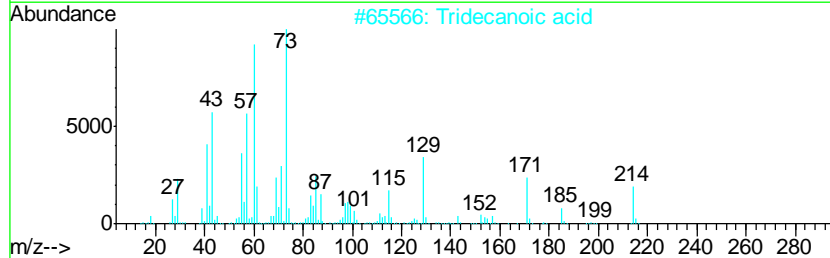
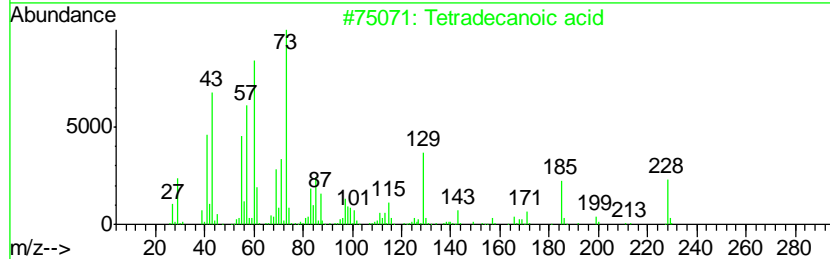
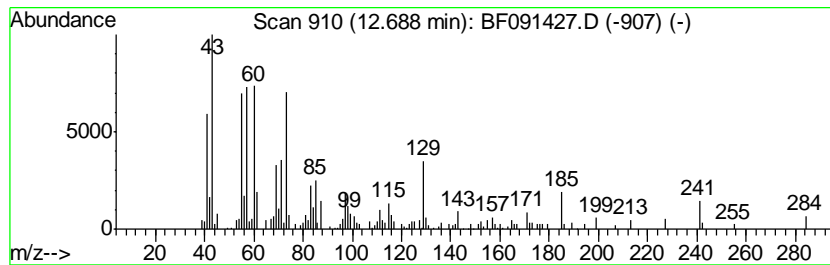
Quant Method : Z:\HPCHEM1\BNA F\METHODS\8270-BF112916.M
 Quant Title : ASP BNA STANDARDS FOR 5 POINT CALIBRATION

TIC Library : C:\DATABASE\NIST02.L
 TIC Integration Parameters: LSCINT.P

 Peak Number 4 Tetradecanoic acid Concentration Rank 4

R.T.	EstConc	Area	Relative to ISTD	R.T.
12.69	2.43 ng	175950	Chrysene-d12	14.00

Hit#	of	Tentative ID	MW	MolForm	CAS#	Qual
1	5	Tetradecanoic acid	228	C14H28O2	000544-63-8	87
2		Tridecanoic acid	214	C13H26O2	000638-53-9	64
3		Pentadecanoic acid	242	C15H30O2	001002-84-2	64
4		n-Decanoic acid	172	C10H20O2	000334-48-5	60
5		Dodecanoic acid	200	C12H24O2	000143-07-7	58



Data Path : Z:\HPCHEM1\BNA_F\DATA\BF120516\
Data File : BF091427.D
Acq On : 5 Dec 2016 19:32
Operator : UM/SJ
Sample : H5838-06
Misc :
ALS Vial : 11 Sample Multiplier: 1

Instrument :
BNA_F
ClientSampleId :
MW-15

Quant Method : Z:\HPCHEM1\BNA_F\METHODS\8270-BF112916.M
Quant Title : ASP BNA STANDARDS FOR 5 POINT CALIBRATION

TIC Library : C:\DATABASE\NIST02.L
TIC Integration Parameters: LSCINT.P

TIC Top Hit name	RT	EstConc	Units	Response	--Internal Standard--			
					#	RT	Resp	Conc
2-Pentanone, 4-hy...	5.03	12.2	ng	519325	1	6.85	853827	20.0
unknown6.62	6.62	92.7	ng	3957160	1	6.85	853827	20.0
Tetradecanoic acid	12.69	2.4	ng	175950	5	14.00	1448940	20.0