

Data Path : Z:\HPCHEM1\BNA F\DATA\BF120715\
 Data File : BF083588.D
 Acq On : 8 Dec 2015 8:14
 Operator : UM/IZ
 Sample : G4584-10DL 20X
 Misc :
 ALS Vial : 30 Sample Multiplier: 1

Instrument :
 BNA_F
 ClientSampleId :
 SB-P3WC-16(4-11)DL

Manual Integrations
 APPROVED

Mmdadoda
 12/8/2015 6:16:13 PM

Quant Time: Dec 08 10:26:27 2015
 Quant Method : Z:\HPCHEM1\BNA F\METHODS\8270-BF120415.M
 Quant Title : ASP BNA STANDARDS FOR 5 POINT CALIBRATION
 QLast Update : Sat Dec 05 04:12:46 2015
 Response via : Initial Calibration

Internal Standards	R.T.	QIon	Response	Conc	Units	Dev(Min)	
1) 1,4-Dichlorobenzene-d4	5.72	152	139459	20.00	ng	-0.05	
21) Naphthalene-d8	7.62	136	506435	20.00	ng	-0.06	
38) Acenaphthene-d10	10.41	164	221873	20.00	ng	-0.06	
63) Phenanthrene-d10	12.81	188	354042	20.00	ng	-0.05	
75) Chrysene-d12	17.01	240	325566	20.00	ng	-0.03	
86) Perylene-d12	18.65	264	237109	20.00	ng	-0.02	
System Monitoring Compounds							
5) 2-Fluorophenol	4.03	112	42721	4.65	ng	0.00	
7) Phenol-d6	5.32	99	60253	4.76	ng	0.00	
23) Nitrobenzene-d5	6.58	82	40214	3.71	ng	-0.02	
41) 2,4,6-Tribromophenol	11.72	330	8154	3.98	ng	-0.03	
44) 2-Fluorobiphenyl	9.37	172	66377	4.06	ng	-0.06	
78) Terphenyl-d14	15.44	244	50052	3.42	ng	-0.05	
Target Compounds							
31) Naphthalene	7.65	128	1423060	52.79	ng		99
37) 2-Methylnaphthalene	8.76	142	130531	7.83	ng		99
45) 1,1'-Biphenyl	9.52	154	39706	2.01	ng		97
48) Acenaphthylene	10.18	152	207505	8.53	ng		100
57) Fluorene	11.31	166	52669	3.12	ng		95
70) Phenanthrene	12.84	178	270366	13.12	ng		98
71) Anthracene	12.93	178	68841	3.28	ng		97
74) Fluoranthene	14.77	202	117472	5.75	ng		97
77) Pyrene	15.13	202	158662	6.51	ng		99
80) Benzo(a)anthracene	17.00	228	43181m	2.27	ng		
82) Chrysene	17.05	228	37960	2.00	ng		99
89) Benzo(a)pyrene	18.60	252	31438	2.43	ng		97

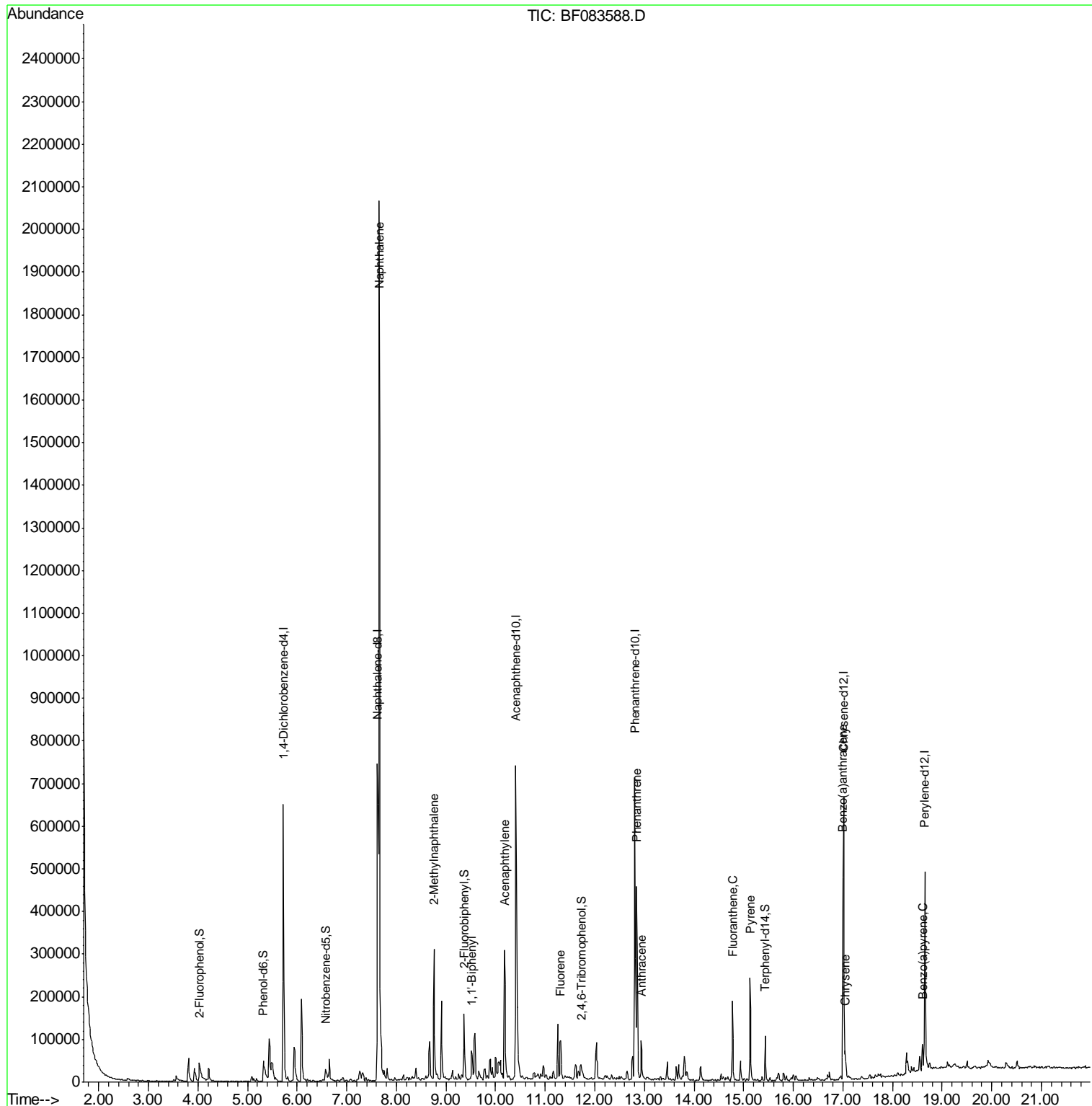
(#) = qualifier out of range (m) = manual integration (+) = signals summed

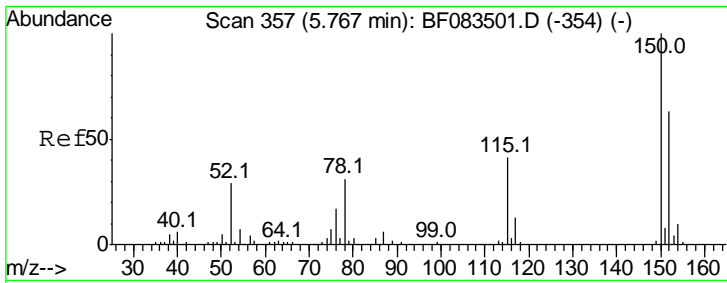
Data Path : Z:\HPCHEM1\BNA F\DATA\BF120715\
 Data File : BF083588.D
 Acq On : 8 Dec 2015 8:14
 Operator : UM/IZ
 Sample : G4584-10DL 20X
 Misc :
 ALS Vial : 30 Sample Multiplier: 1

Instrument :
 BNA_F
 Client Sample ID :
 SB-P3WC-16(4-11)DL

Manual Integrations
 APPROVED
 Mmdadoda
 12/8/2015 6:16:13 PM

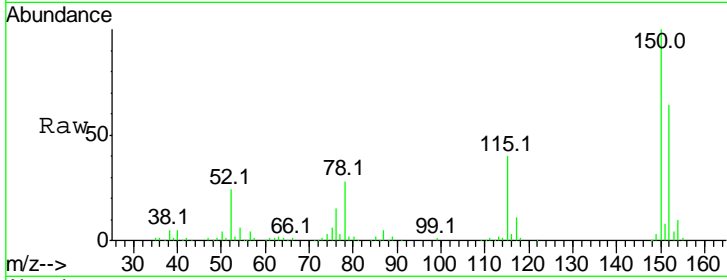
Quant Time: Dec 08 10:26:27 2015
 Quant Method : Z:\HPCHEM1\BNA F\METHODS\8270-BF120415.M
 Quant Title : ASP BNA STANDARDS FOR 5 POINT CALIBRATION
 QLast Update : Sat Dec 05 04:12:46 2015
 Response via : Initial Calibration





#1
 1,4-Dichlorobenzene-d4
 Concen: 20.00 ng
 RT: 5.72 min Scan# 353
 Delta R.T. -0.05 min
 Lab File: BF083588.D
 Acq: 8 Dec 2015 8:14

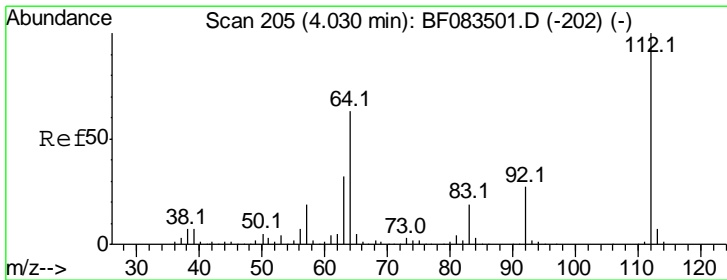
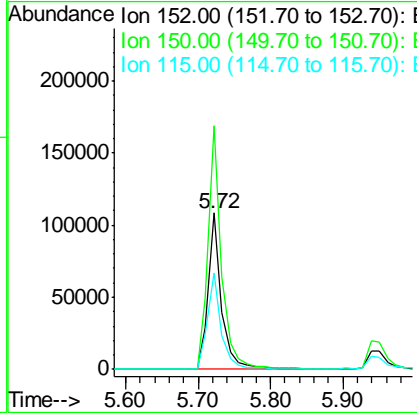
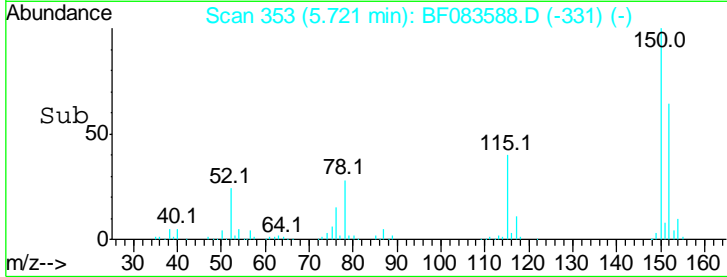
Instrument :
 BNA_F
ClientSampled :
 SB-P3WC-16(4-11)DL



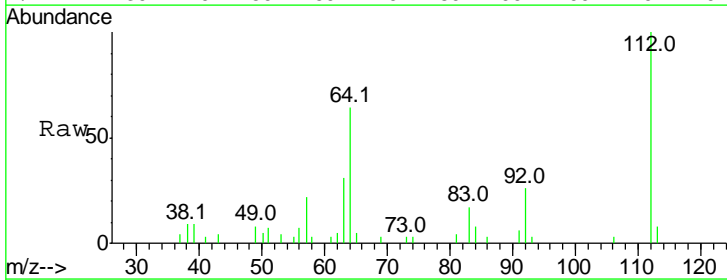
Tgt Ion: 152 Resp: 139459

Ion	Ratio	Lower	Upper
152	100		
150	155.6	126.5	189.7
115	61.7	52.3	78.5

Manual Integrations
APPROVED
 Mmddadoda
 12/8/2015 6:16:13 PM

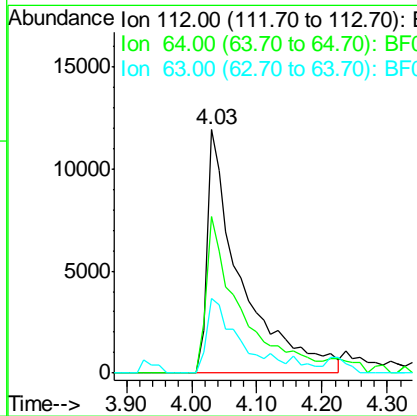
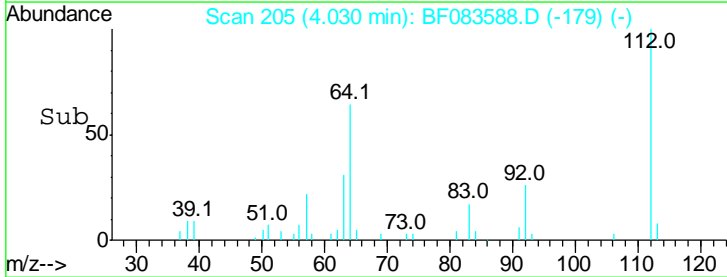


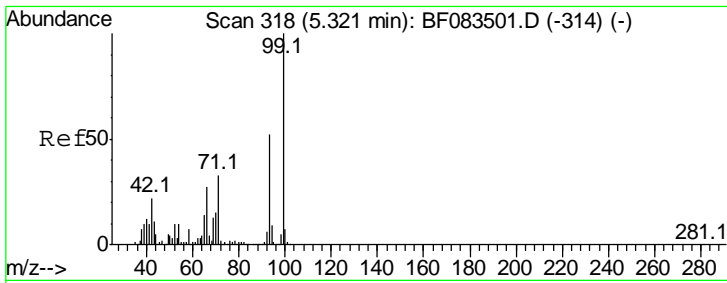
#5
 2-Fluorophenol
 Concen: 4.65 ng
 RT: 4.03 min Scan# 205
 Delta R.T. 0.00 min
 Lab File: BF083588.D
 Acq: 8 Dec 2015 8:14



Tgt Ion: 112 Resp: 42721

Ion	Ratio	Lower	Upper
112	100		
64	64.5	50.5	75.7
63	30.8	25.8	38.6



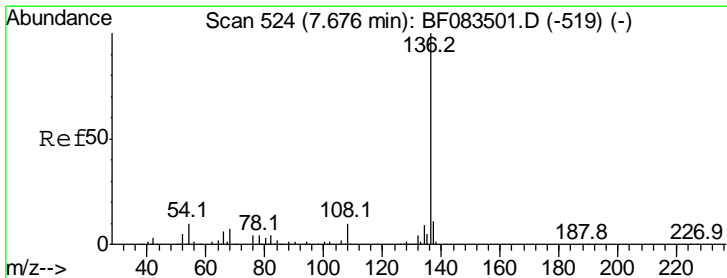
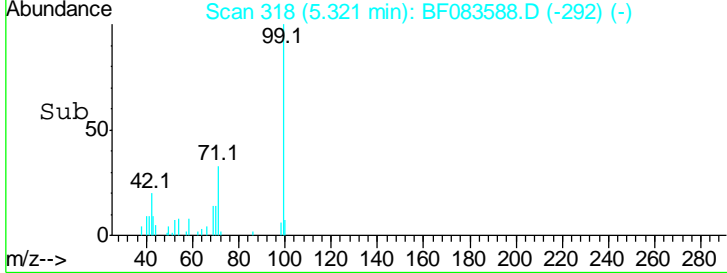
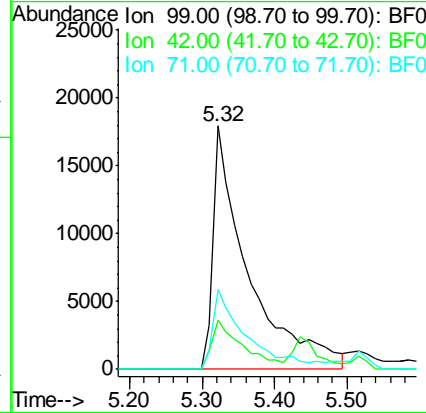
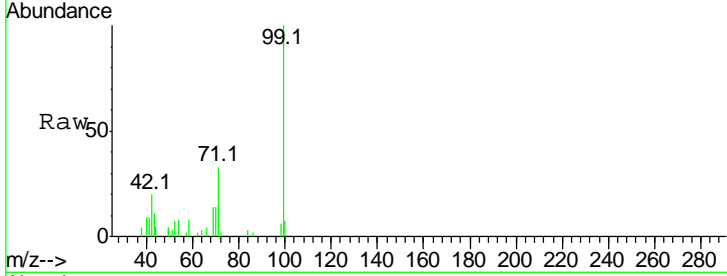


#7
 Phenol-d6
 Concen: 4.76 ng
 RT: 5.32 min Scan# 318
 Delta R.T. 0.00 min
 Lab File: BF083588.D
 Acq: 8 Dec 2015 8:14

Instrument :
 BNA_F
ClientSampleId :
 SB-P3WC-16(4-11)DL

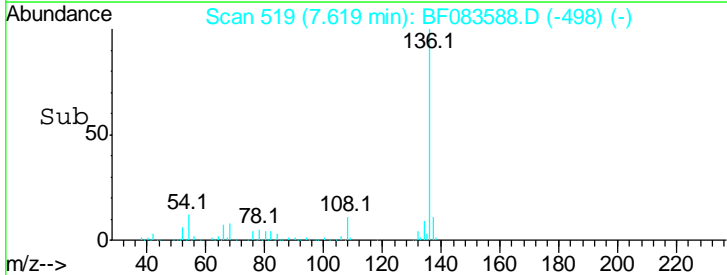
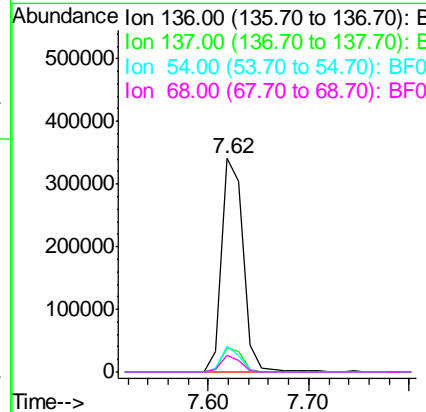
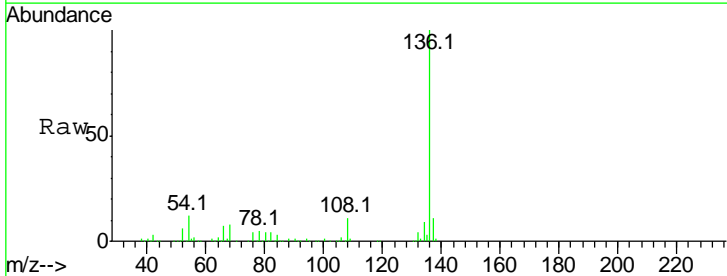
Tgt Ion	Resp	Lower	Upper
99	100		
42	20.4	17.3	25.9
71	32.9	26.6	40.0

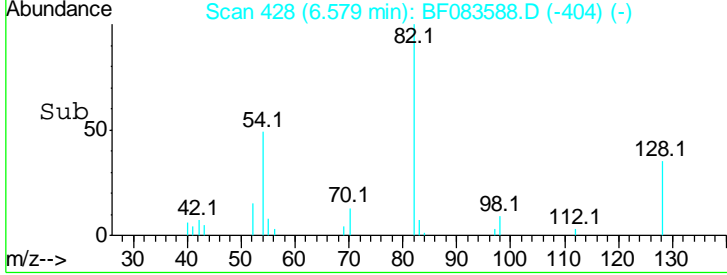
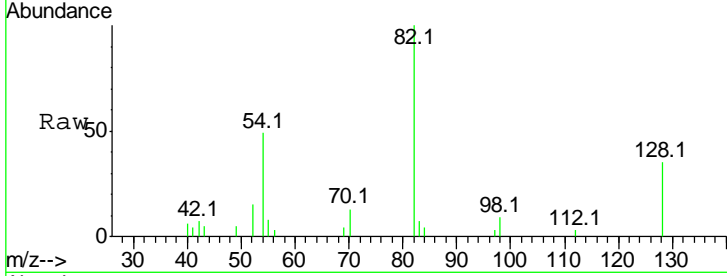
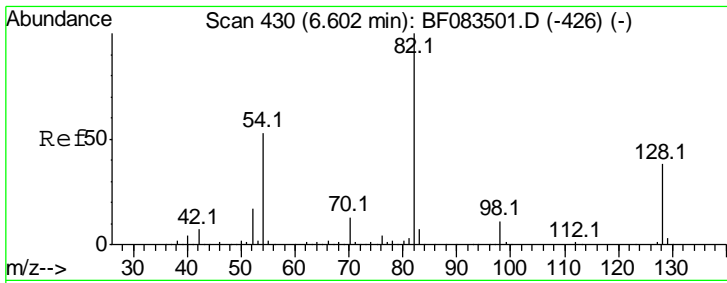
Manual Integrations
APPROVED
 Mmddadoda
 12/8/2015 6:16:13 PM



#21
 Naphthalene-d8
 Concen: 20.00 ng
 RT: 7.62 min Scan# 519
 Delta R.T. -0.06 min
 Lab File: BF083588.D
 Acq: 8 Dec 2015 8:14

Tgt Ion	Resp	Lower	Upper
136	100		
137	11.3	8.7	13.1
54	11.8	7.8	11.6#
68	8.0	5.7	8.5



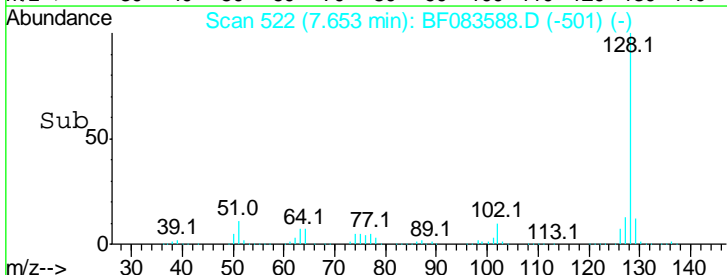
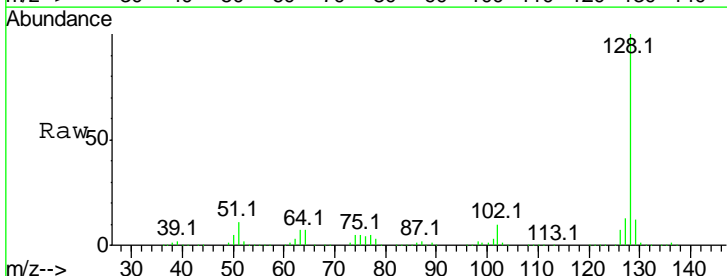
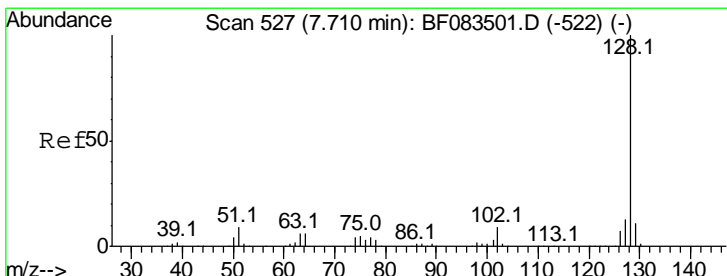
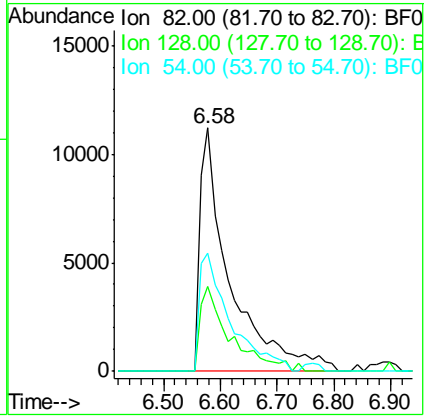


#23
 Nitrobenzene-d5
 Concen: 3.71 ng
 RT: 6.58 min Scan# 428
 Delta R.T. -0.02 min
 Lab File: BF083588.D
 Acq: 8 Dec 2015 8:14

Tgt Ion	Resp	Lower	Upper
82	40214		
82	100		
128	35.1	30.7	46.1
54	48.7	42.5	63.7

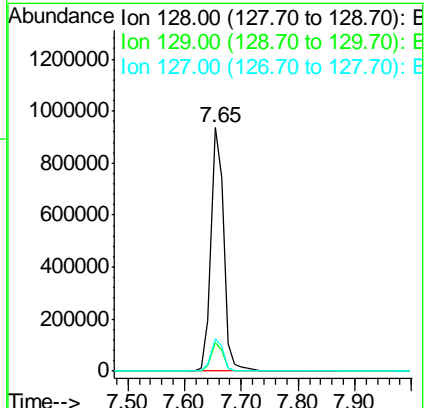
Instrument :
 BNA_F
ClientSampled :
 SB-P3WC-16(4-11)DL

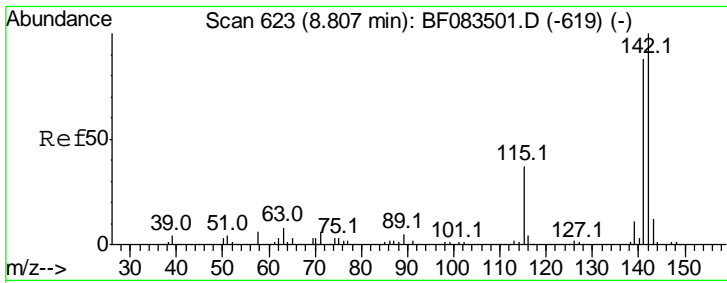
Manual Integrations
APPROVED
 Mmddadoda
 12/8/2015 6:16:13 PM



#31
 Naphthalene
 Concen: 52.79 ng
 RT: 7.65 min Scan# 522
 Delta R.T. -0.06 min
 Lab File: BF083588.D
 Acq: 8 Dec 2015 8:14

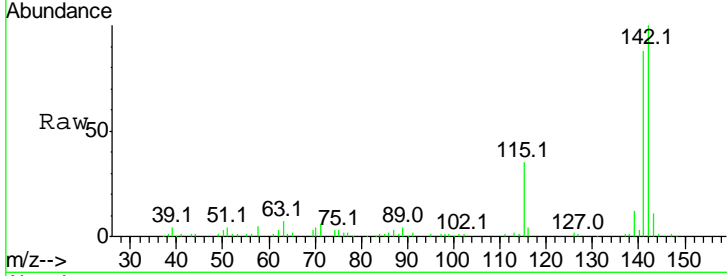
Tgt Ion	Resp	Lower	Upper
128	1423060		
128	100		
129	11.7	8.6	13.0
127	13.2	10.6	16.0





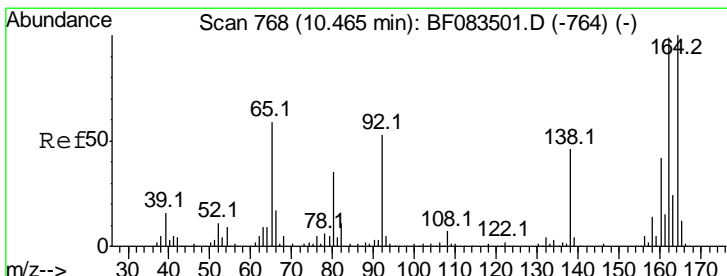
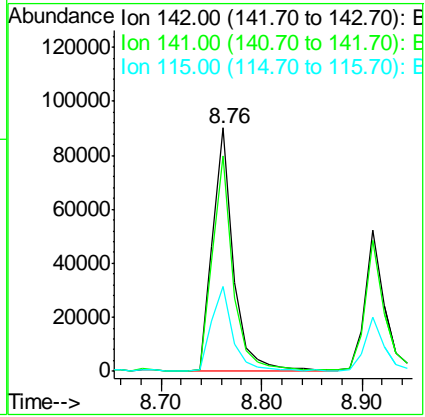
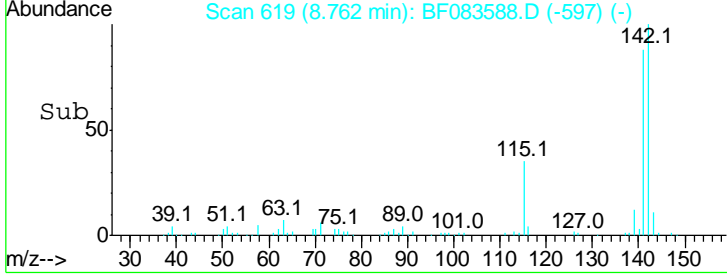
#37
 2-Methylnaphthalene
 Concen: 7.83 ng
 RT: 8.76 min Scan# 619
 Delta R.T. -0.05 min
 Lab File: BF083588.D
 Acq: 8 Dec 2015 8:14

Instrument :
 BNA_F
ClientSampleId :
 SB-P3WC-16(4-11)DL

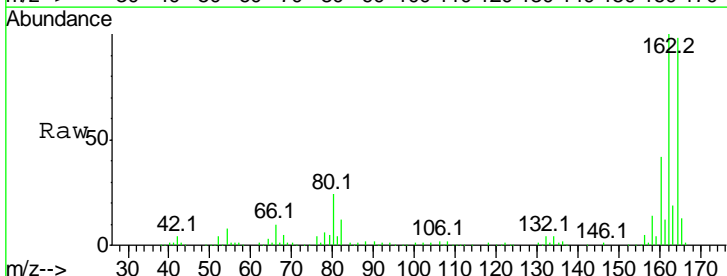


Tgt Ion	Resp	Lower	Upper
142	100		
141	88.4	70.3	105.5
115	34.9	29.2	43.8

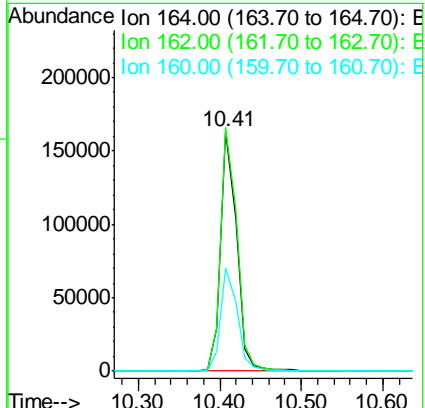
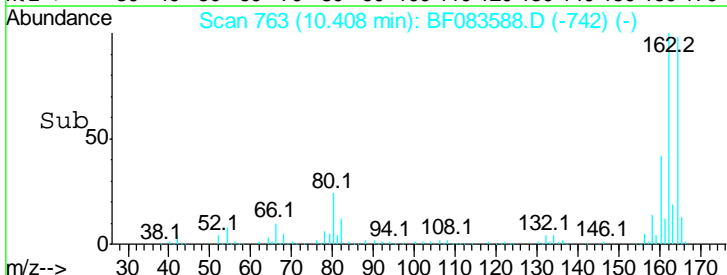
Manual Integrations
APPROVED
 Mmddadoda
 12/8/2015 6:16:13 PM

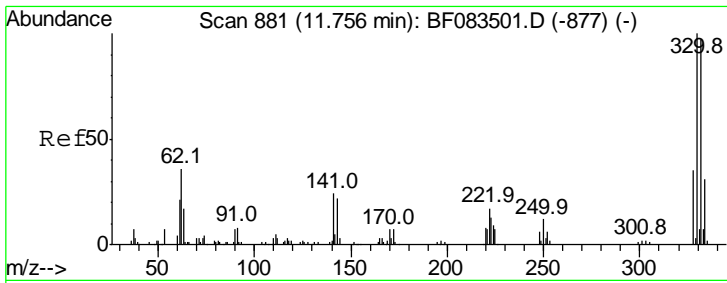


#38
 Acenaphthene-d10
 Concen: 20.00 ng
 RT: 10.41 min Scan# 763
 Delta R.T. -0.06 min
 Lab File: BF083588.D
 Acq: 8 Dec 2015 8:14



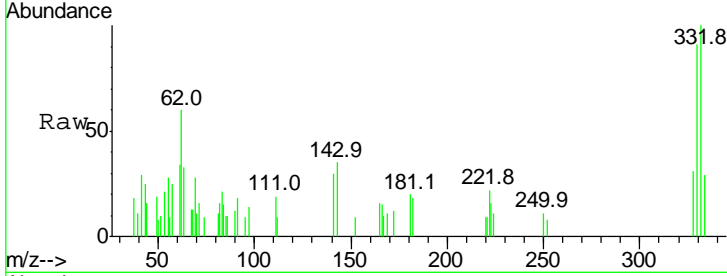
Tgt Ion	Resp	Lower	Upper
164	100		
162	101.6	78.8	118.2
160	43.0	33.4	50.2





#41
 2,4,6-Tribromophenol
 Concen: 3.98 ng
 RT: 11.72 min Scan# 878
 Delta R.T. -0.03 min
 Lab File: BF083588.D
 Acq: 8 Dec 2015 8:14

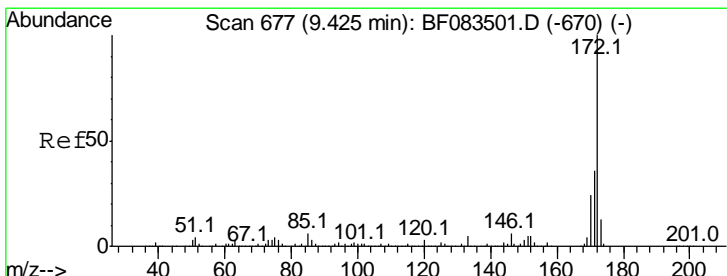
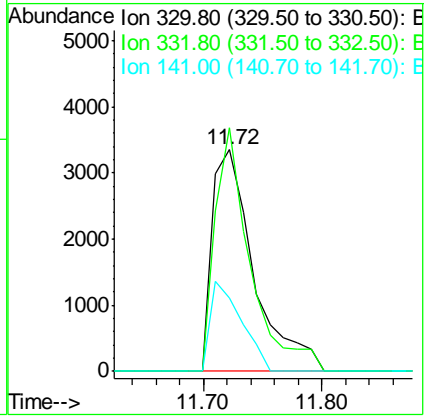
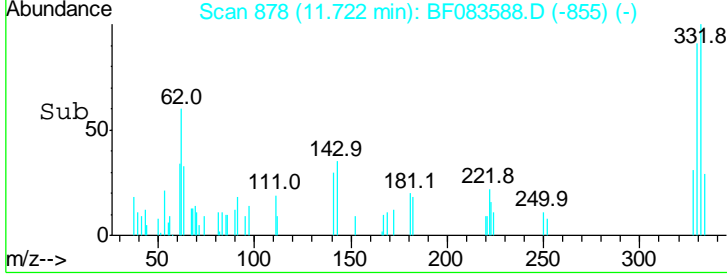
Instrument :
 BNA_F
ClientSampled :
 SB-P3WC-16(4-11)DL



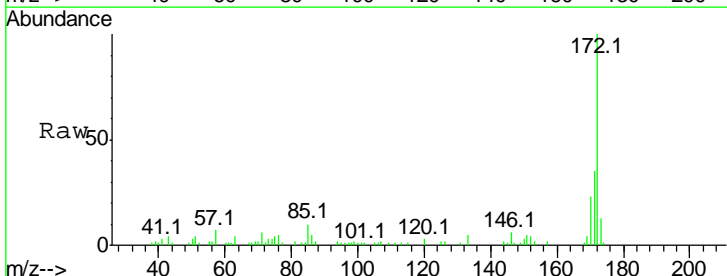
Tgt Ion: 330 Resp: 8154

Ion	Ratio	Lower	Upper
330	100		
332	92.3	0.0	0.0#
141	30.1	0.0	0.0#

Manual Integrations
APPROVED
 Mmdadoda
 12/8/2015 6:16:13 PM

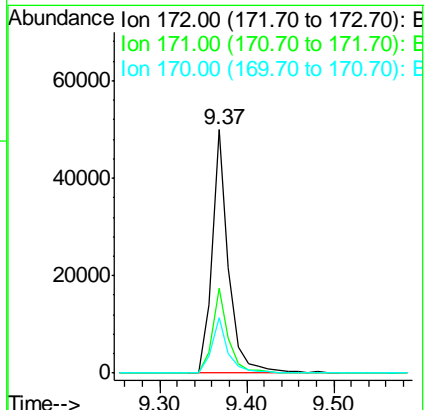
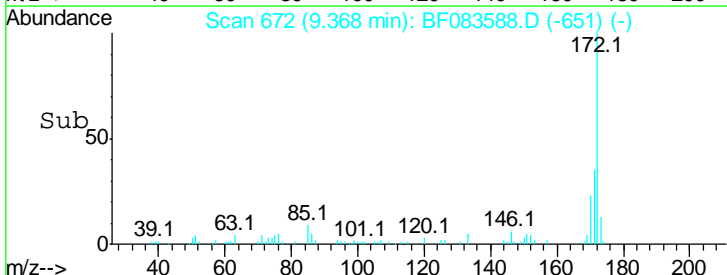


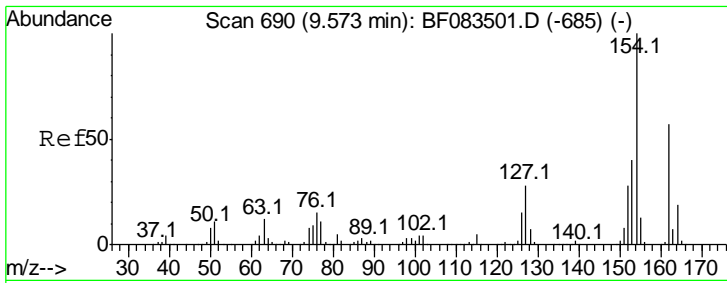
#44
 2-Fluorobiphenyl
 Concen: 4.06 ng
 RT: 9.37 min Scan# 672
 Delta R.T. -0.06 min
 Lab File: BF083588.D
 Acq: 8 Dec 2015 8:14



Tgt Ion: 172 Resp: 66377

Ion	Ratio	Lower	Upper
172	100		
171	34.9	28.6	42.8
170	22.7	19.4	29.0



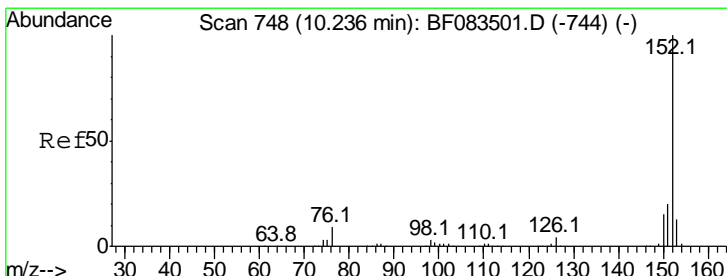
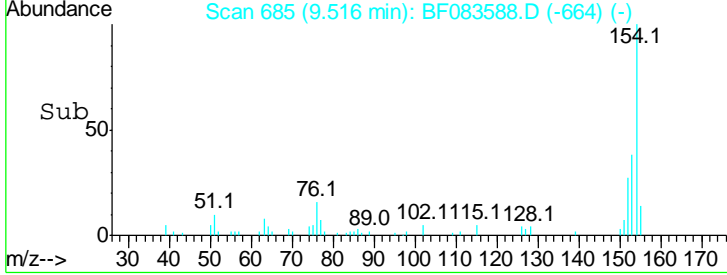
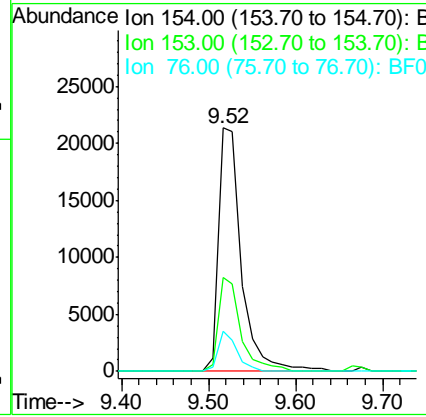
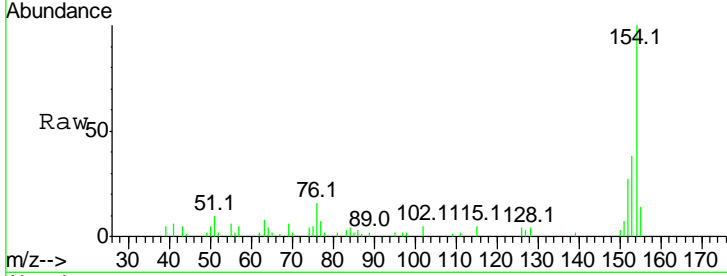


#45
 1,1'-Biphenyl
 Concen: 2.01 ng
 RT: 9.52 min Scan# 685
 Delta R.T. -0.06 min
 Lab File: BF083588.D
 Acq: 8 Dec 2015 8:14

Instrument :
 BNA_F
ClientSampleId :
 SB-P3WC-16(4-11)DL

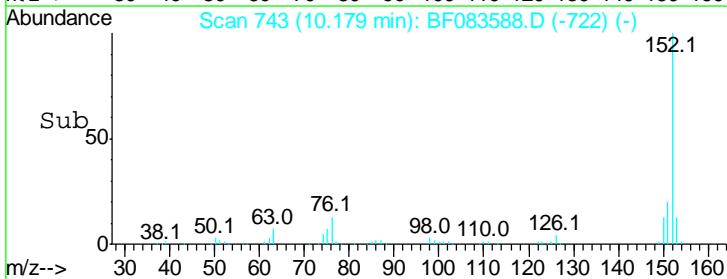
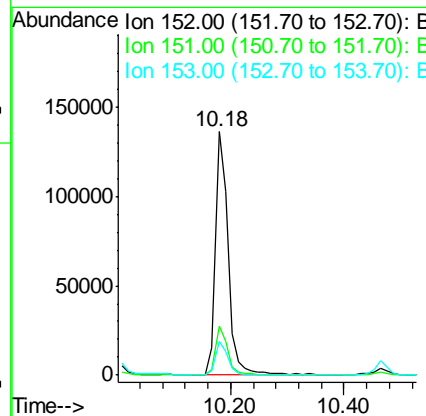
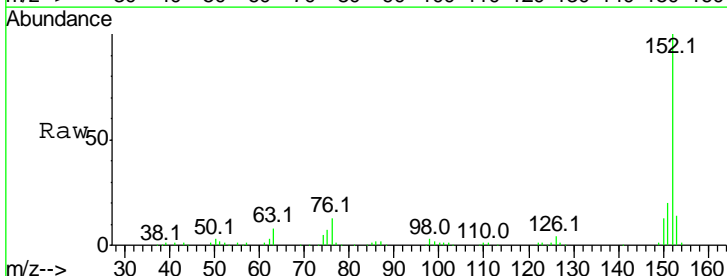
Tgt Ion	Resp	Lower	Upper
154	100		
153	38.3	20.2	60.2
76	16.2	0.0	34.8

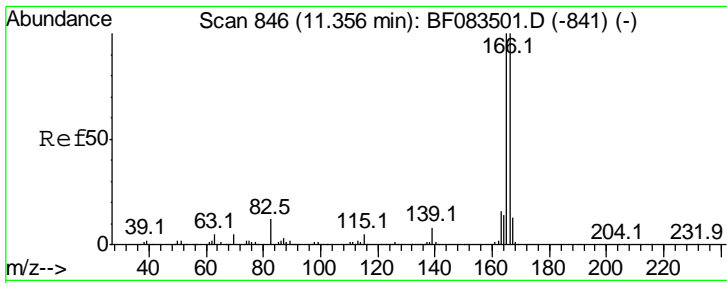
Manual Integrations
APPROVED
 Mmdadoda
 12/8/2015 6:16:13 PM



#48
 Acenaphthylene
 Concen: 8.53 ng
 RT: 10.18 min Scan# 743
 Delta R.T. -0.06 min
 Lab File: BF083588.D
 Acq: 8 Dec 2015 8:14

Tgt Ion	Resp	Lower	Upper
152	100		
151	20.1	16.3	24.5
153	13.6	10.8	16.2



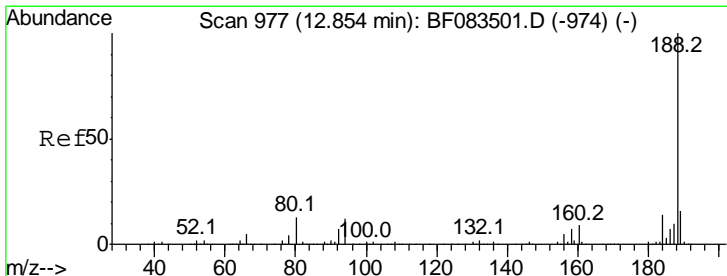
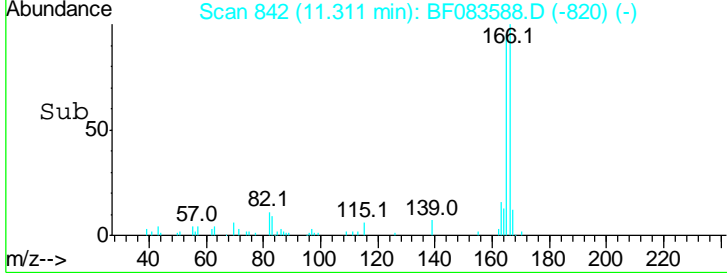
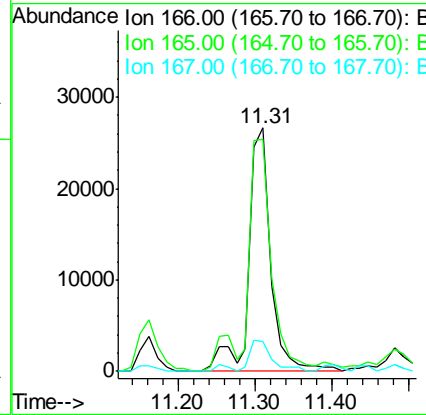
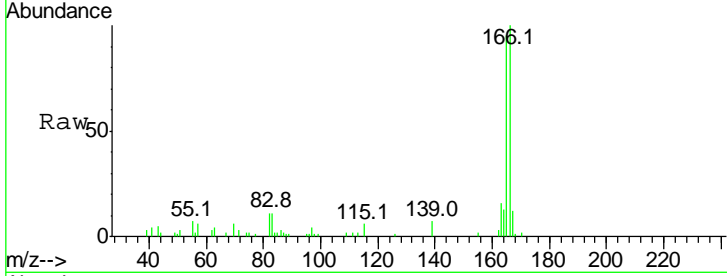


#57
 Fluorene
 Concen: 3.12 ng
 RT: 11.31 min Scan# 842
 Delta R.T. -0.05 min
 Lab File: BF083588.D
 Acq: 8 Dec 2015 8:14

Instrument :
 BNA_F
ClientSampled :
 SB-P3WC-16(4-11)DL

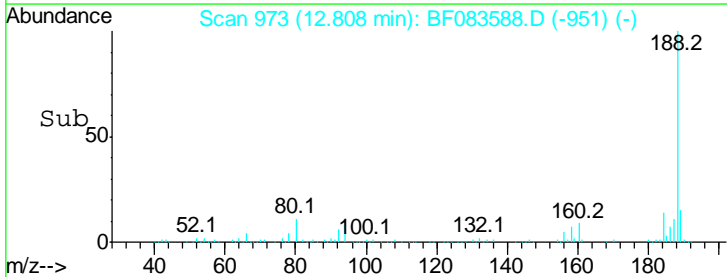
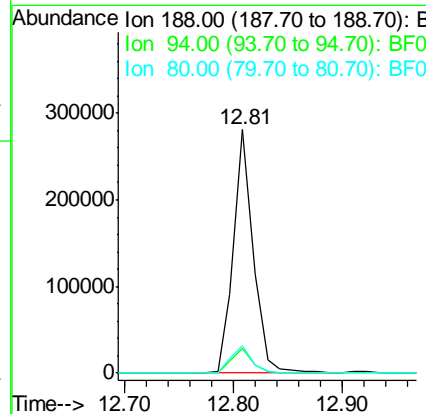
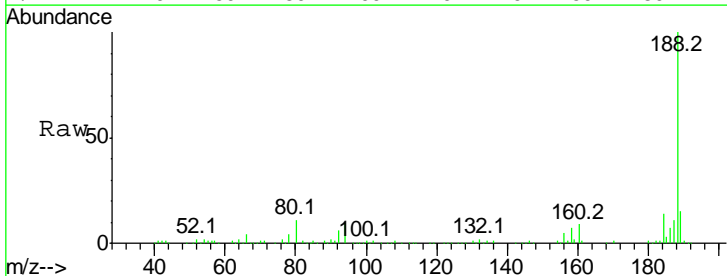
Tgt Ion	Resp	Lower	Upper
166	100		
165	95.2	80.0	120.0
167	12.4	10.6	16.0

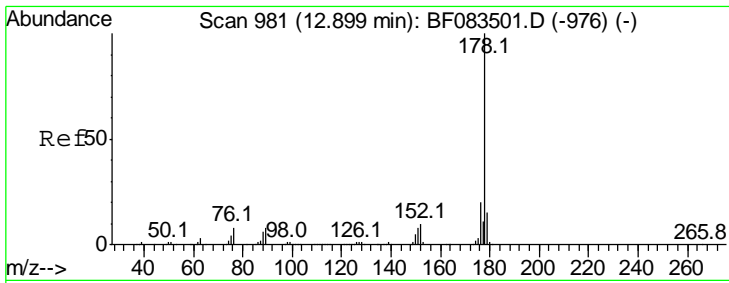
Manual Integrations
APPROVED
 Mmddadoda
 12/8/2015 6:16:13 PM



#63
 Phenanthrene-d10
 Concen: 20.00 ng
 RT: 12.81 min Scan# 973
 Delta R.T. -0.05 min
 Lab File: BF083588.D
 Acq: 8 Dec 2015 8:14

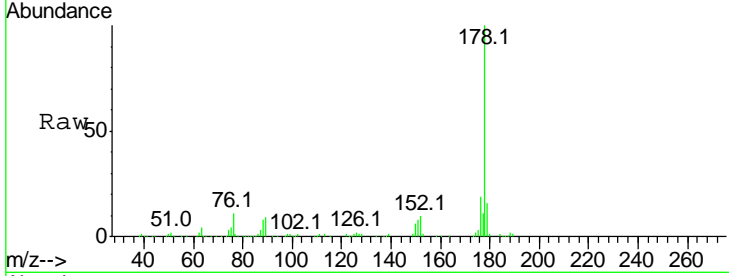
Tgt Ion	Resp	Lower	Upper
188	100		
94	10.2	9.4	14.2
80	11.2	10.6	16.0





#70
 Phenanthrene
 Concen: 13.12 ng
 RT: 12.84 min Scan# 976
 Delta R.T. -0.06 min
 Lab File: BF083588.D
 Acq: 8 Dec 2015 8:14

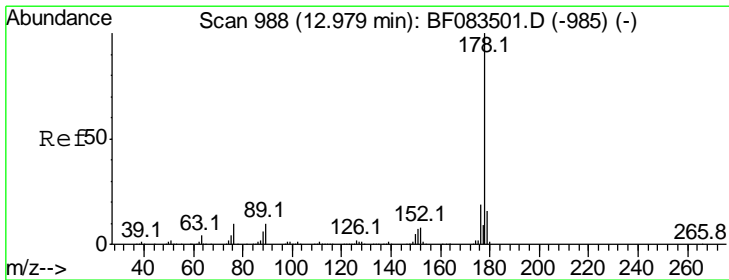
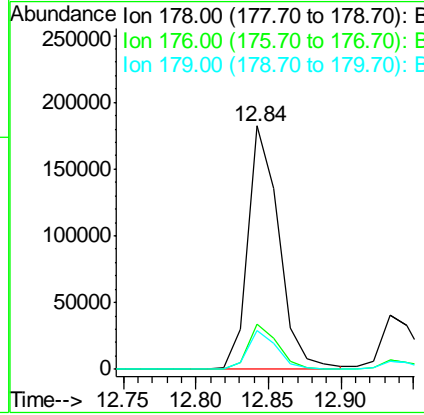
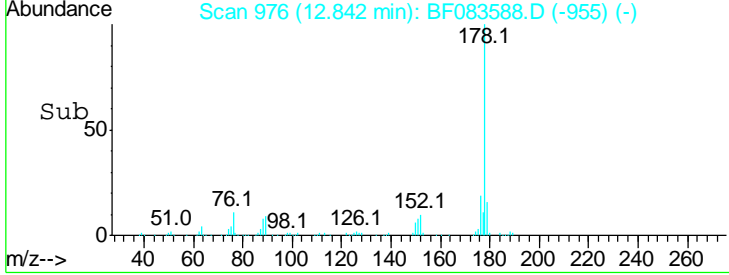
Instrument :
 BNA_F
ClientSampleId :
 SB-P3WC-16(4-11)DL



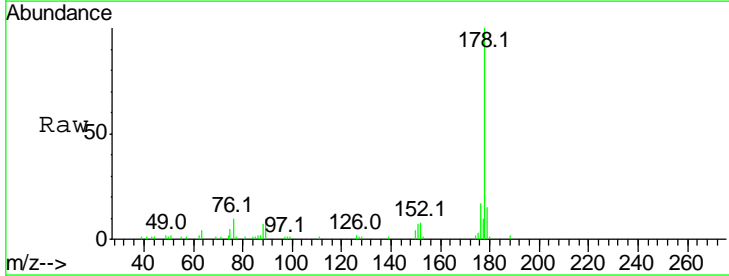
Tgt Ion: 178 Resp: 270366

Ion	Ratio	Lower	Upper
178	100		
176	18.5	15.7	23.5
179	15.8	12.2	18.4

Manual Integrations
APPROVED
 Mmdadoda
 12/8/2015 6:16:13 PM

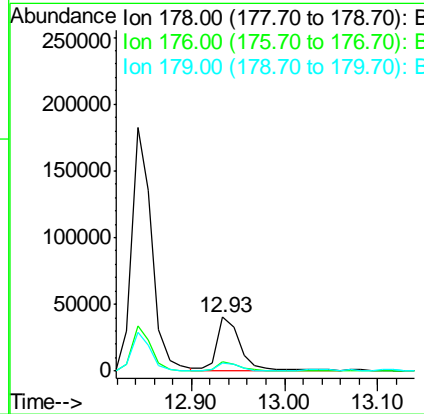
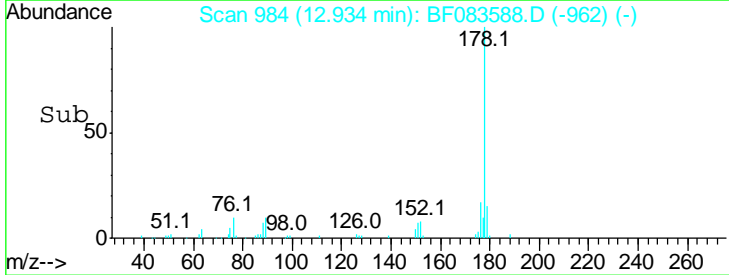


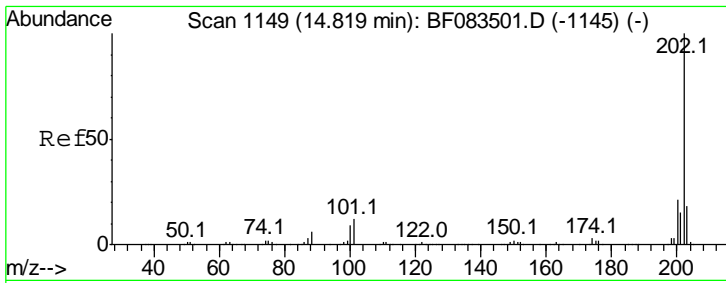
#71
 Anthracene
 Concen: 3.28 ng
 RT: 12.93 min Scan# 984
 Delta R.T. -0.05 min
 Lab File: BF083588.D
 Acq: 8 Dec 2015 8:14



Tgt Ion: 178 Resp: 68841

Ion	Ratio	Lower	Upper
178	100		
176	17.0	15.2	22.8
179	15.0	12.6	18.8



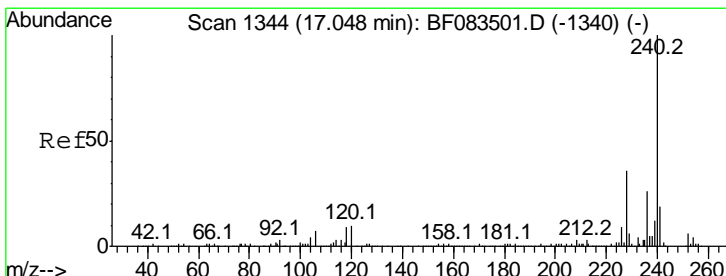
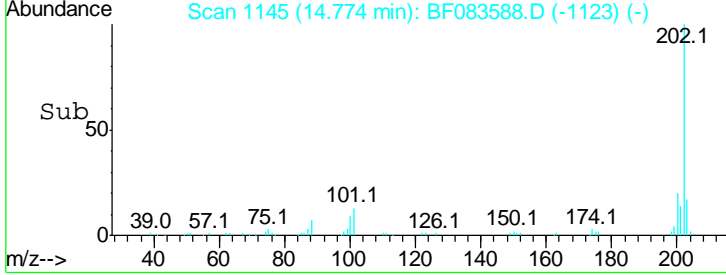
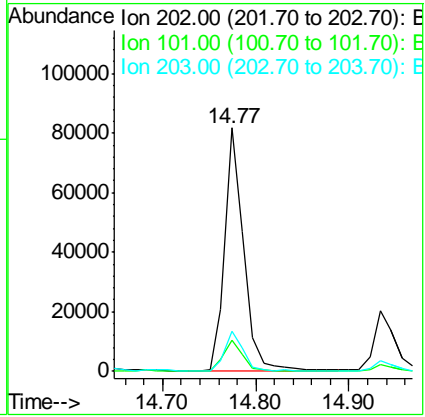
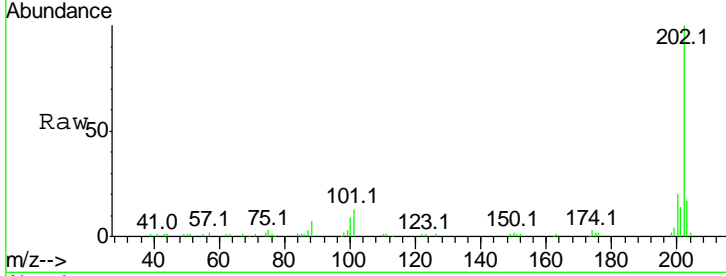


#74
 Fluoranthene
 Concen: 5.75 ng
 RT: 14.77 min Scan# 1145
 Delta R.T. -0.05 min
 Lab File: BF083588.D
 Acq: 8 Dec 2015 8:14

Instrument :
 BNA_F
ClientSampled :
 SB-P3WC-16(4-11)DL

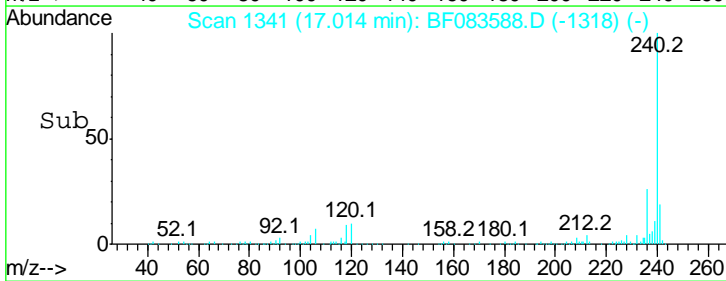
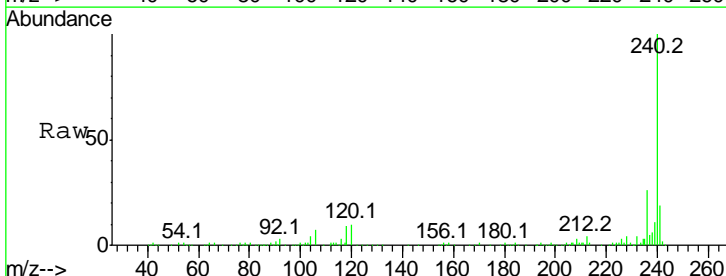
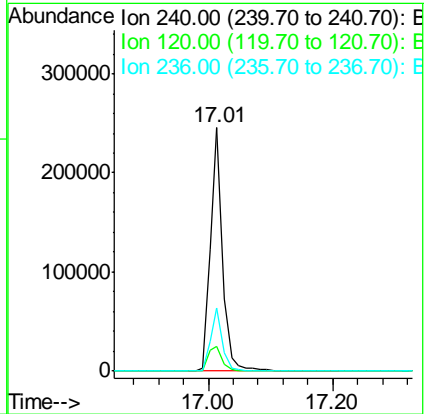
Tgt Ion	Resp	Lower	Upper
202	117472		
202	100		
101	12.6	0.0	31.5
203	16.6	0.0	37.6

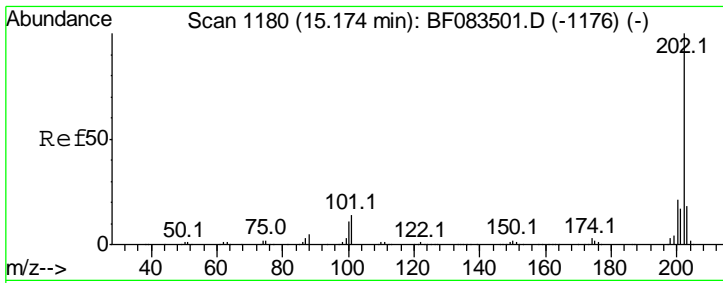
Manual Integrations
APPROVED
 Mmddadoda
 12/8/2015 6:16:13 PM



#75
 Chrysene-d12
 Concen: 20.00 ng
 RT: 17.01 min Scan# 1341
 Delta R.T. -0.03 min
 Lab File: BF083588.D
 Acq: 8 Dec 2015 8:14

Tgt Ion	Resp	Lower	Upper
240	325566		
240	100		
120	10.1	8.1	12.1
236	25.9	20.8	31.2



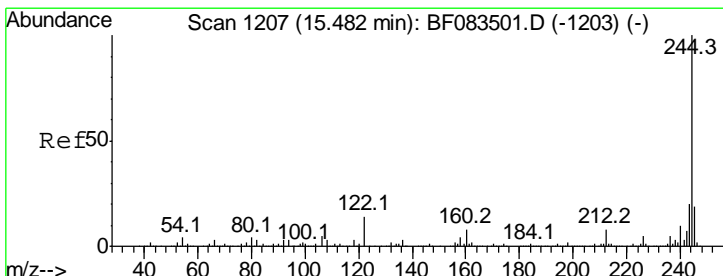
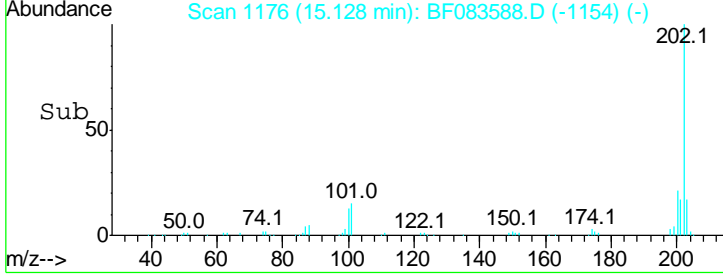
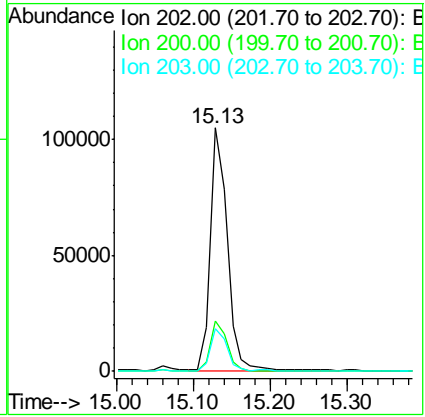
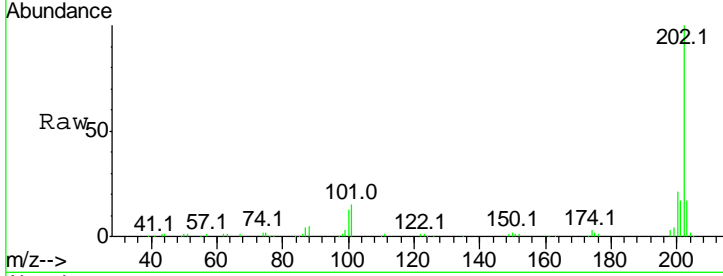


#77
 Pyrene
 Concen: 6.51 ng
 RT: 15.13 min Scan# 1176
 Delta R.T. -0.05 min
 Lab File: BF083588.D
 Acq: 8 Dec 2015 8:14

Instrument :
 BNA_F
ClientSampleId :
 SB-P3WC-16(4-11)DL

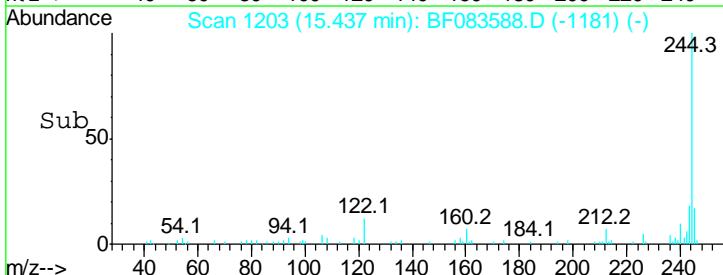
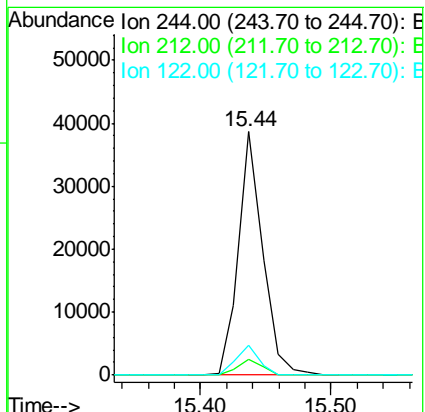
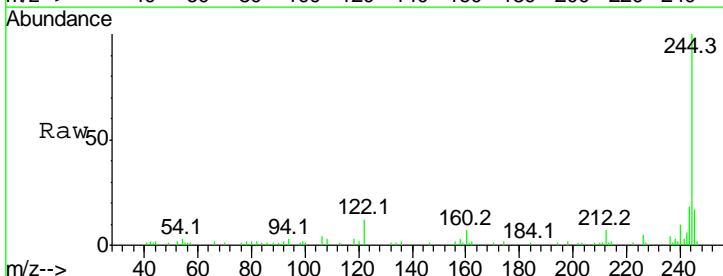
Tgt Ion	Resp	Lower	Upper
202	100		
200	20.6	16.7	25.1
203	17.3	14.3	21.5

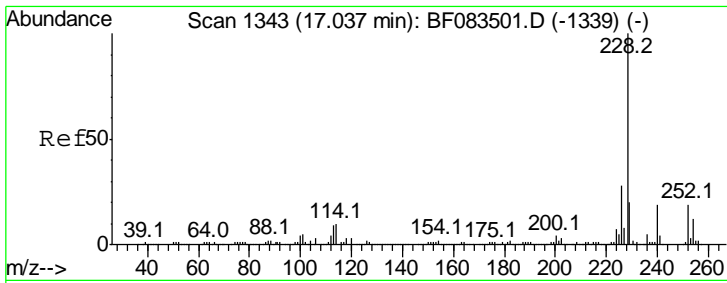
Manual Integrations
APPROVED
 Mmddadoda
 12/8/2015 6:16:13 PM



#78
 Terphenyl-d14
 Concen: 3.42 ng
 RT: 15.44 min Scan# 1203
 Delta R.T. -0.05 min
 Lab File: BF083588.D
 Acq: 8 Dec 2015 8:14

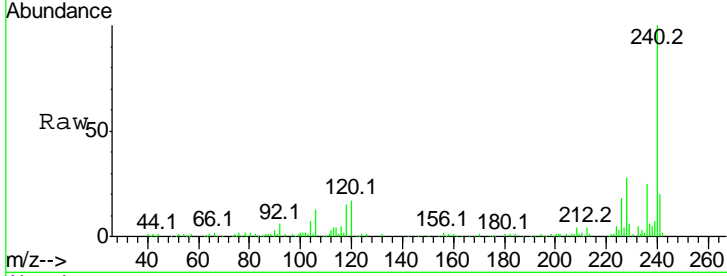
Tgt Ion	Resp	Lower	Upper
244	100		
212	6.6	6.1	9.1
122	12.0	11.0	16.6





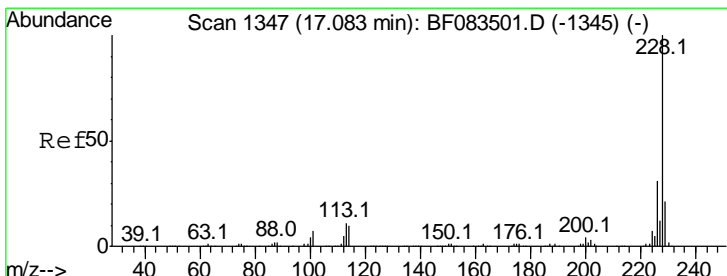
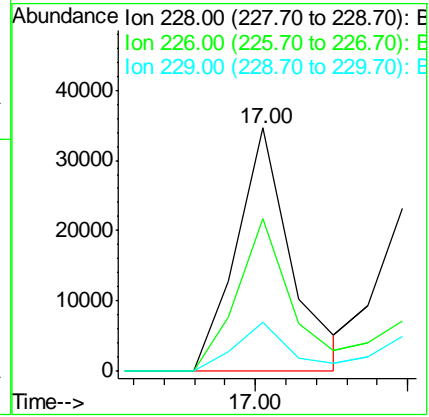
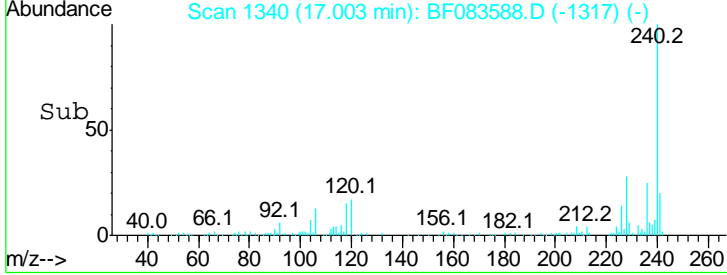
#80
 Benzo(a)anthracene
 Concen: 2.27 ng m
 RT: 17.00 min Scan# 1340
 Delta R.T. -0.03 min
 Lab File: BF083588.D
 Acq: 8 Dec 2015 8:14

Instrument :
 BNA_F
ClientSampled :
 SB-P3WC-16(4-11)DL

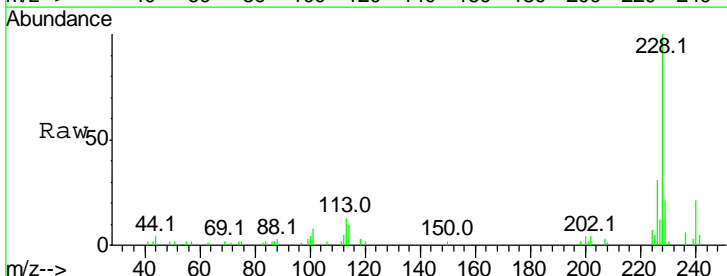


Tgt Ion	Resp	Lower	Upper
228	100		
226	62.9	22.3	33.5#
229	20.2	15.7	23.5

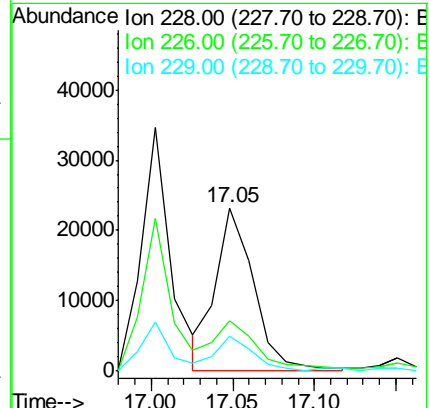
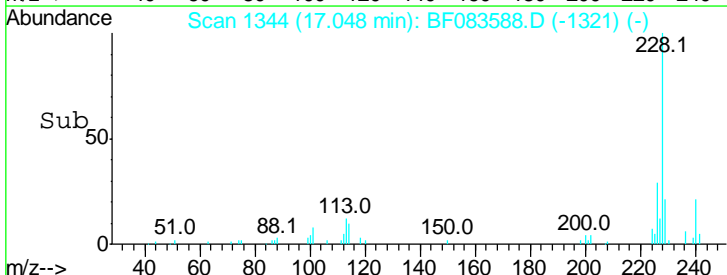
Manual Integrations
APPROVED
 Mmddadoda
 12/8/2015 6:16:13 PM

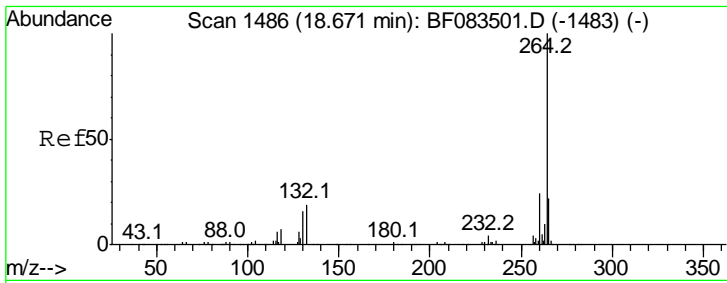


#82
 Chrysene
 Concen: 2.00 ng
 RT: 17.05 min Scan# 1344
 Delta R.T. -0.03 min
 Lab File: BF083588.D
 Acq: 8 Dec 2015 8:14



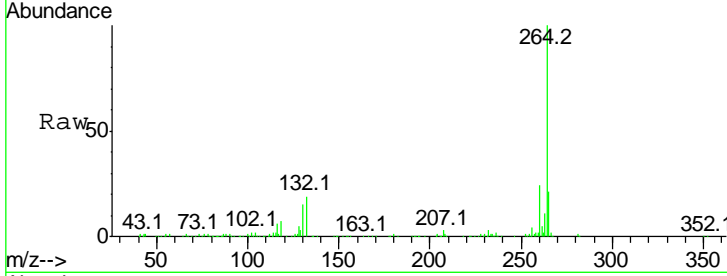
Tgt Ion	Resp	Lower	Upper
228	100		
226	30.9	24.7	37.1
229	21.0	16.3	24.5





#86
 Perylene-d12
 Concen: 20.00 ng
 RT: 18.65 min Scan# 1484
 Delta R.T. -0.02 min
 Lab File: BF083588.D
 Acq: 8 Dec 2015 8:14

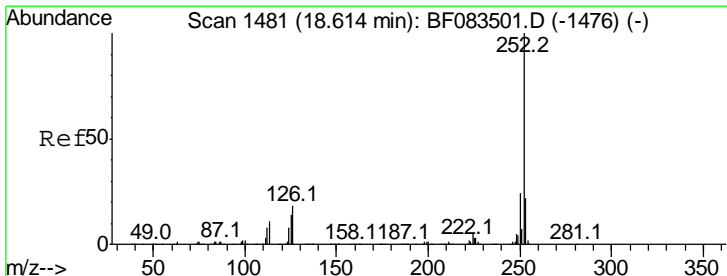
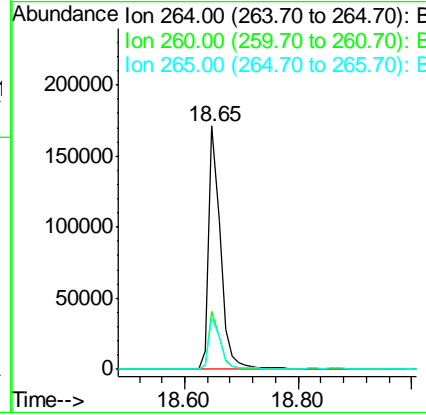
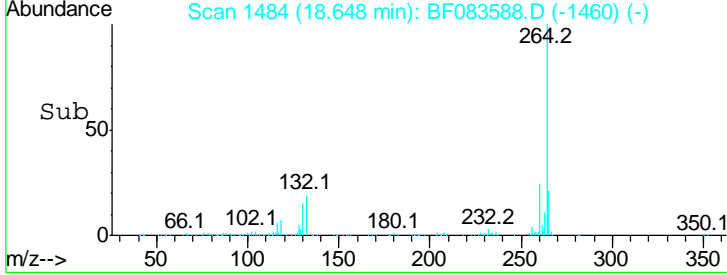
Instrument :
 BNA_F
ClientSampled :
 SB-P3WC-16(4-11)DL



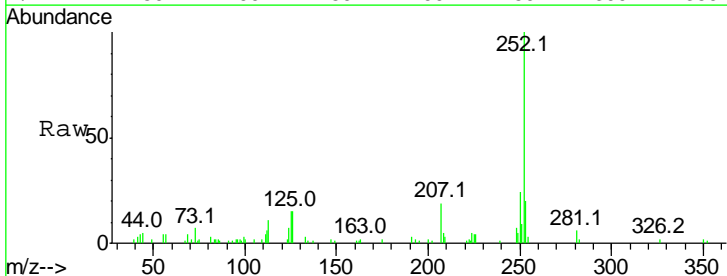
Tgt Ion: 264 Resp: 237109

Ion	Ratio	Lower	Upper
264	100		
260	24.0	19.4	29.0
265	21.1	17.8	26.6

Manual Integrations
APPROVED
 Mmddadoda
 12/8/2015 6:16:13 PM



#89
 Benzo(a)pyrene
 Concen: 2.43 ng
 RT: 18.60 min Scan# 1480
 Delta R.T. -0.01 min
 Lab File: BF083588.D
 Acq: 8 Dec 2015 8:14



Tgt Ion: 252 Resp: 31438

Ion	Ratio	Lower	Upper
252	100		
253	20.3	17.5	26.3
125	15.0	11.0	16.6

