

Data Path : Z:\HPCHEM1\BNA_F\DATA\BF120915\
 Data File : BF083645.D
 Acq On : 9 Dec 2015 18:02
 Operator : UM/IZ
 Sample : G4561-07
 Misc :
 ALS Vial : 11 Sample Multiplier: 1

Instrument :
 BNA_F
 ClientSampleId :
 LS-SB17A(6-6.5)

Quant Time: Dec 10 00:36:39 2015
 Quant Method : Z:\HPCHEM1\BNA_F\METHODS\8270-BF120815.M
 Quant Title : ASP BNA STANDARDS FOR 5 POINT CALIBRATION
 QLast Update : Wed Dec 09 00:23:35 2015
 Response via : Initial Calibration

| Internal Standards | R.T. | QIon | Response | Conc | Units | Dev(Min) |
|---------------------------|-------|------|----------|-------|-------|----------|
| 1) 1,4-Dichlorobenzene-d4 | 5.68 | 152 | 152365 | 20.00 | ng | -0.02 |
| 21) Naphthalene-d8 | 7.57 | 136 | 575500 | 20.00 | ng | -0.03 |
| 38) Acenaphthene-d10 | 10.36 | 164 | 266204 | 20.00 | ng | -0.02 |
| 63) Phenanthrene-d10 | 12.76 | 188 | 401193 | 20.00 | ng | -0.02 |
| 75) Chrysene-d12 | 16.98 | 240 | 300965 | 20.00 | ng | -0.01 |
| 86) Perylene-d12 | 18.64 | 264 | 274092 | 20.00 | ng | 0.00 |

System Monitoring Compounds

| | | | | | | |
|--------------------------|-------|-----|---------|--------|----|-------|
| 5) 2-Fluorophenol | 3.96 | 112 | 1276687 | 127.09 | ng | -0.01 |
| 7) Phenol-d6 | 5.26 | 99 | 1820193 | 135.61 | ng | -0.01 |
| 23) Nitrobenzene-d5 | 6.51 | 82 | 1104866 | 89.58 | ng | -0.02 |
| 41) 2,4,6-Tribromophenol | 11.66 | 330 | 264988 | 111.73 | ng | -0.02 |
| 44) 2-Fluorobiphenyl | 9.32 | 172 | 1629573 | 86.16 | ng | -0.02 |
| 78) Terphenyl-d14 | 15.40 | 244 | 1084151 | 84.76 | ng | -0.01 |

Target Compounds

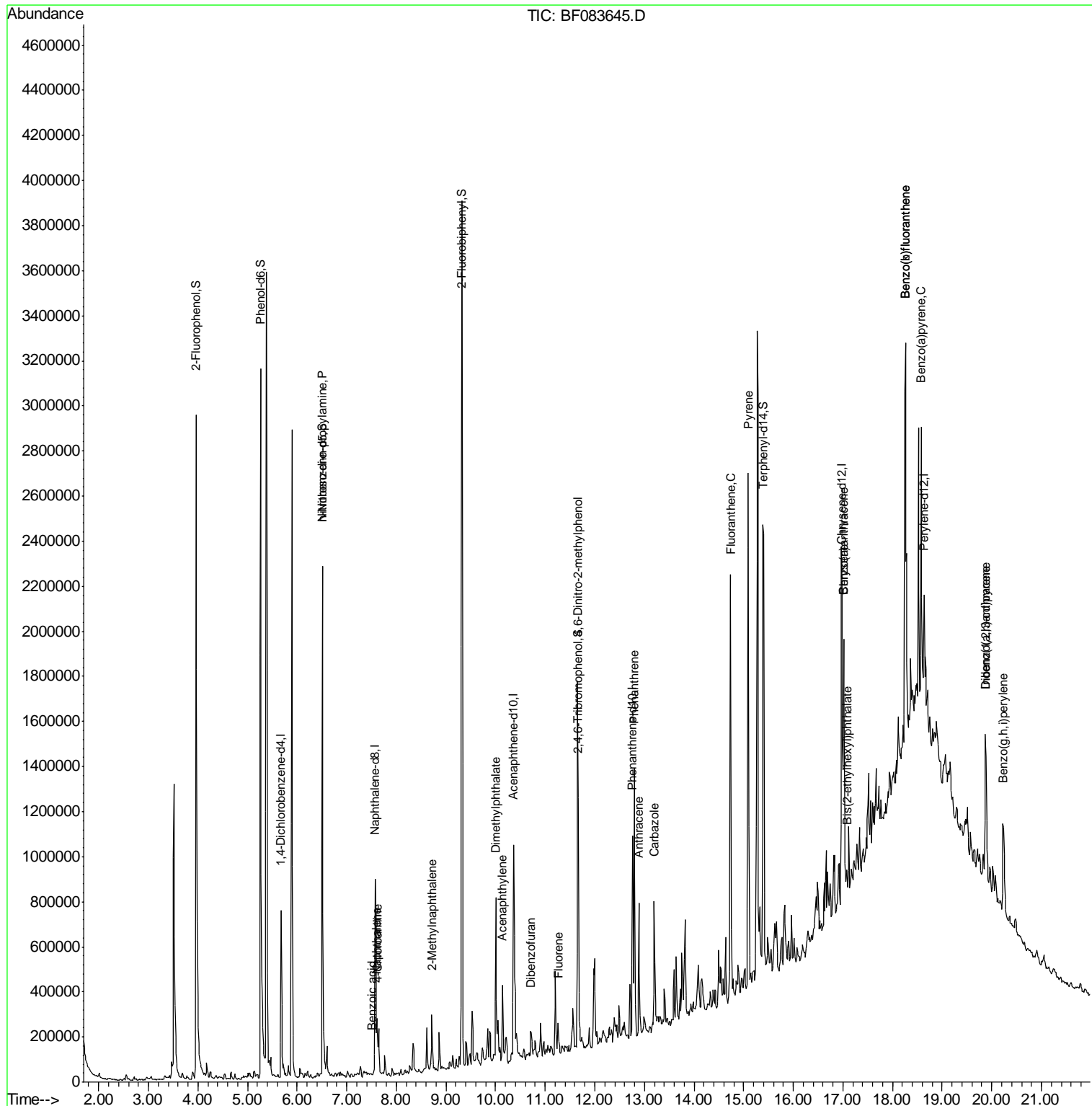
| Target Compounds | R.T. | QIon | Response | Conc | Units | Qvalue |
|--------------------------------|-------|------|----------|-------|-------|--------|
| 19) n-Nitroso-di-n-propylamine | 6.51 | 70 | 143937 | 15.36 | ng | # 79 |
| 31) Naphthalene | 7.61 | 128 | 193751 | 6.36 | ng | 98 |
| 32) Benzoic acid | 7.52 | 122 | 4089 | 3.67 | ng | 90 |
| 33) 4-Chloroaniline | 7.62 | 127 | 24223 | 2.18 | ng | # 31 |
| 37) 2-Methylnaphthalene | 8.72 | 142 | 92505 | 4.83 | ng | 98 |
| 48) Acenaphthylene | 10.13 | 152 | 232643 | 8.08 | ng | 99 |
| 49) Dimethylphthalate | 10.01 | 163 | 368230 | 17.38 | ng | 99 |
| 54) Dibenzofuran | 10.72 | 168 | 72902 | 3.19 | ng | 99 |
| 57) Fluorene | 11.26 | 166 | 48293 | 2.42 | ng | # 94 |
| 64) 4,6-Dinitro-2-methylphenol | 11.65 | 198 | 621 | 2.16 | ng | # 1 |
| 70) Phenanthrene | 12.80 | 178 | 678740 | 29.45 | ng | 99 |
| 71) Anthracene | 12.89 | 178 | 355332 | 14.88 | ng | 98 |
| 72) Carbazole | 13.20 | 167 | 119360 | 5.83 | ng | 96 |
| 74) Fluoranthene | 14.74 | 202 | 1369655 | 58.08 | ng | 98 |
| 77) Pyrene | 15.09 | 202 | 1330707 | 61.41 | ng | 97 |
| 80) Benzo(a)anthracene | 17.01 | 228 | 753952 | 42.80 | ng | 95 |
| 82) Chrysene | 17.01 | 228 | 762989 | 43.21 | ng | 99 |
| 83) Bis(2-ethylhexyl)phthalate | 17.08 | 149 | 34255 | 2.57 | ng | 100 |
| 85) Indeno(1,2,3-cd)pyrene | 19.87 | 276 | 464127 | 38.94 | ng | # 100 |
| 87) Benzo(b)fluoranthene | 18.26 | 252 | 1476459 | 94.60 | ng | 98 |
| 88) Benzo(k)fluoranthene | 18.26 | 252 | 1476459 | 85.85 | ng | 97 |
| 89) Benzo(a)pyrene | 18.58 | 252 | 628250 | 41.25 | ng | 98 |
| 90) Dibenzo(a,h)anthracene | 19.87 | 278 | 111903 | 9.61 | ng | # 81 |
| 91) Benzo(g,h,i)perylene | 20.24 | 276 | 429566 | 37.83 | ng | 95 |

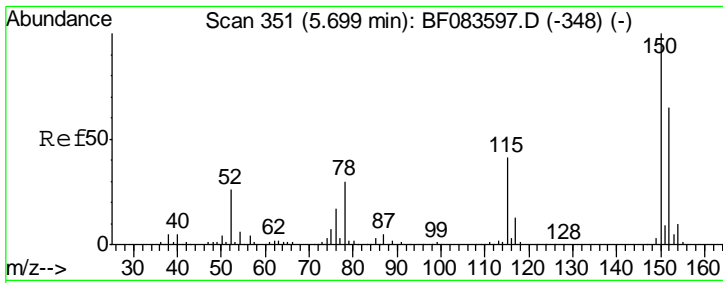
(#) = qualifier out of range (m) = manual integration (+) = signals summed

Data Path : Z:\HPCHEM1\BNA_F\DATA\BF120915\
 Data File : BF083645.D
 Acq On : 9 Dec 2015 18:02
 Operator : UM/IZ
 Sample : G4561-07
 Misc :
 ALS Vial : 11 Sample Multiplier: 1

Instrument :
 BNA_F
 Client Sampled :
 LS-SB17A(6-6.5)

Quant Time: Dec 10 00:36:39 2015
 Quant Method : Z:\HPCHEM1\BNA_F\METHODS\8270-BF120815.M
 Quant Title : ASP BNA STANDARDS FOR 5 POINT CALIBRATION
 QLast Update : Wed Dec 09 00:23:35 2015
 Response via : Initial Calibration

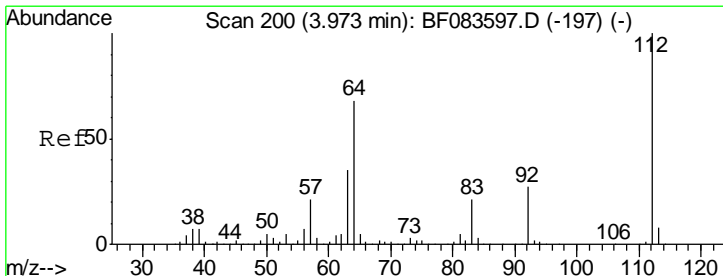
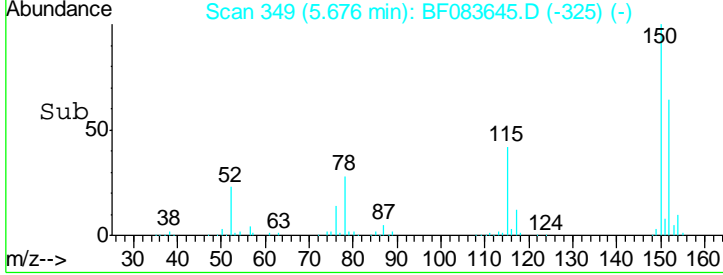
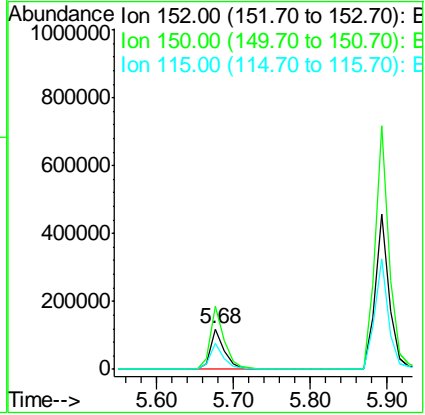
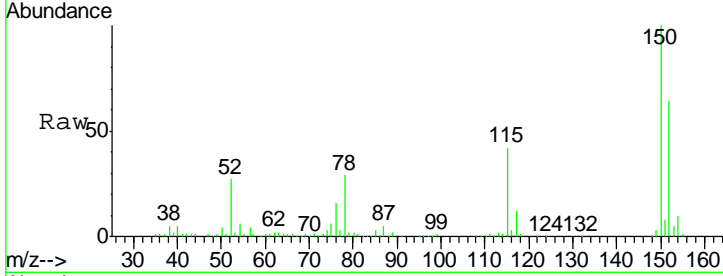




#1
 1,4-Dichlorobenzene-d4
 Concen: 20.00 ng
 RT: 5.68 min Scan# 349
 Delta R.T. -0.02 min
 Lab File: BF083645.D
 Acq: 9 Dec 2015 18:02

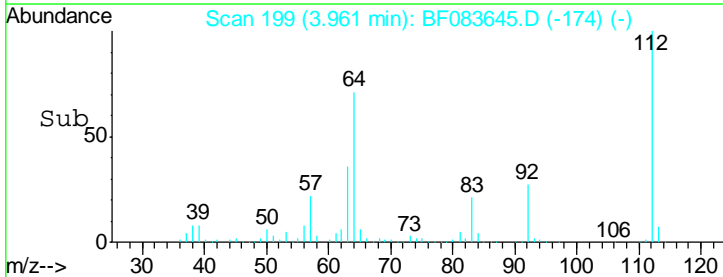
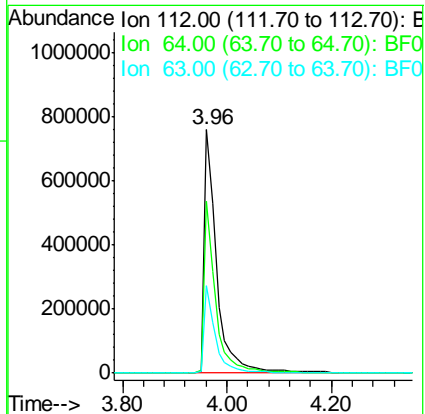
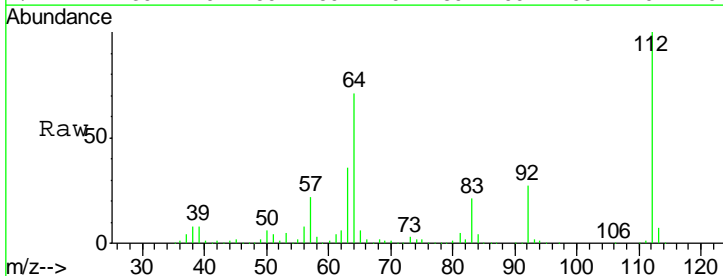
Instrument :
 BNA_F
ClientSampleId :
 LS-SB17A(6-6.5)

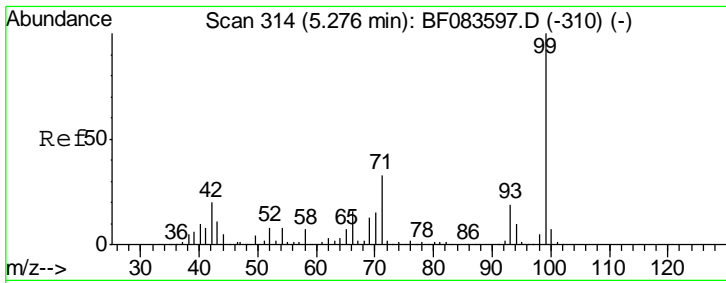
| Tgt Ion | Resp | Lower | Upper |
|---------|--------|-------|-------|
| 152 | 152365 | | |
| 152 | 100 | | |
| 150 | 156.1 | 126.5 | 189.7 |
| 115 | 65.2 | 52.3 | 78.5 |



#5
 2-Fluorophenol
 Concen: 127.09 ng
 RT: 3.96 min Scan# 199
 Delta R.T. -0.01 min
 Lab File: BF083645.D
 Acq: 9 Dec 2015 18:02

| Tgt Ion | Resp | Lower | Upper |
|---------|---------|-------|-------|
| 112 | 1276687 | | |
| 112 | 100 | | |
| 64 | 70.6 | 50.5 | 75.7 |
| 63 | 35.9 | 25.8 | 38.6 |



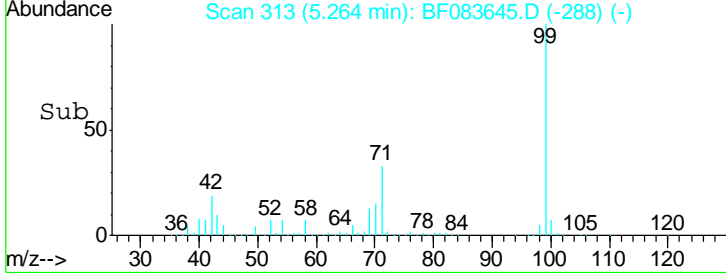
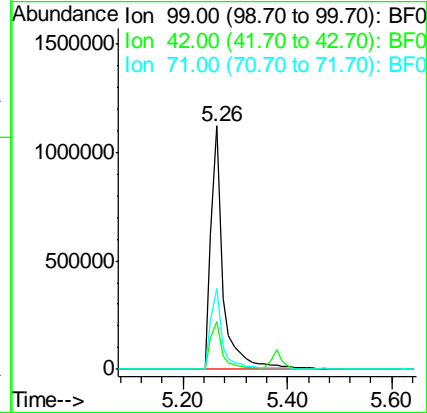
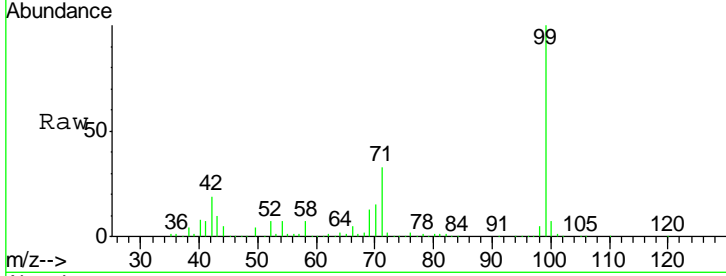


#7
 Phenol-d6
 Concen: 135.61 ng
 RT: 5.26 min Scan# 313
 Delta R.T. -0.01 min
 Lab File: BF083645.D
 Acq: 9 Dec 2015 18:02

Instrument :
 BNA_F
ClientSampleId :
 LS-SB17A(6-6.5)

Tgt Ion: 99 Resp: 1820193

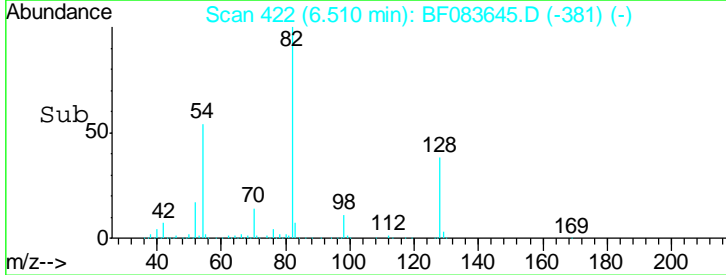
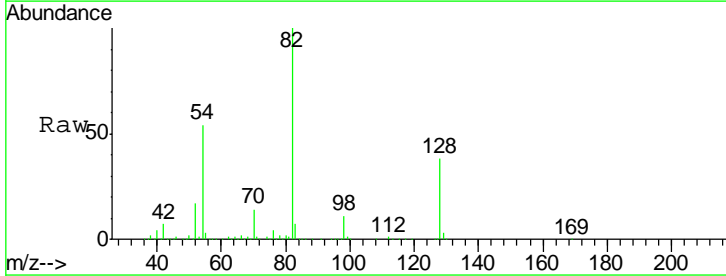
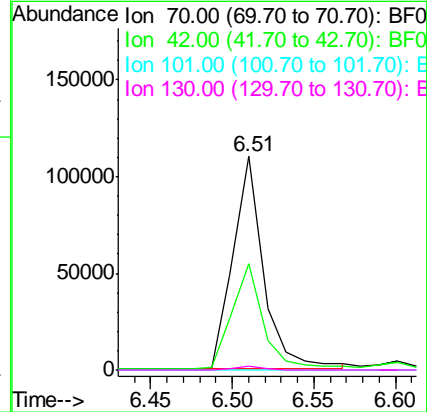
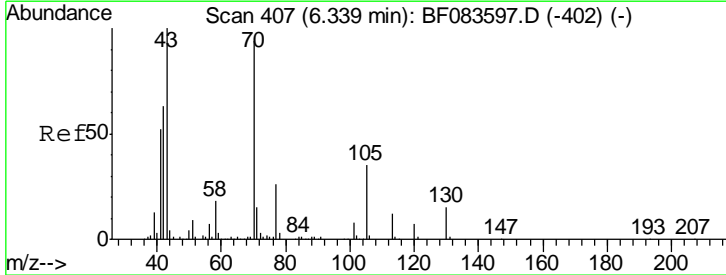
| Ion | Ratio | Lower | Upper |
|-----|-------|-------|-------|
| 99 | 100 | | |
| 42 | 19.4 | 17.3 | 25.9 |
| 71 | 33.3 | 26.6 | 40.0 |

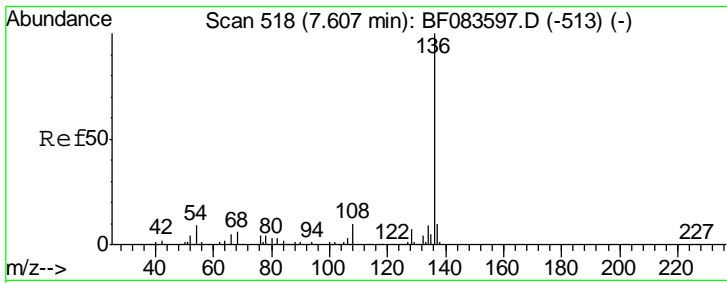


#19
 n-Nitroso-di-n-propylamine
 Concen: 15.36 ng
 RT: 6.51 min Scan# 422
 Delta R.T. 0.17 min
 Lab File: BF083645.D
 Acq: 9 Dec 2015 18:02

Tgt Ion: 70 Resp: 143937

| Ion | Ratio | Lower | Upper |
|-----|-------|-------|-------|
| 70 | 100 | | |
| 42 | 49.7 | 49.2 | 73.8 |
| 101 | 0.0 | 7.1 | 10.7# |
| 130 | 1.9 | 15.4 | 23.0# |

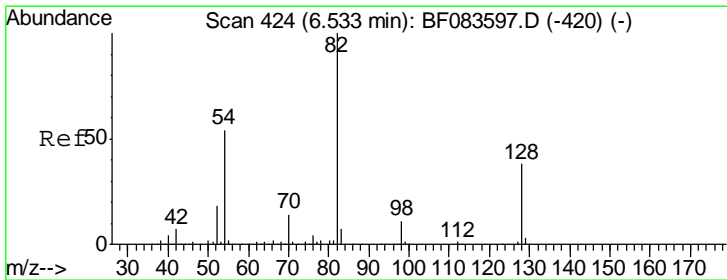
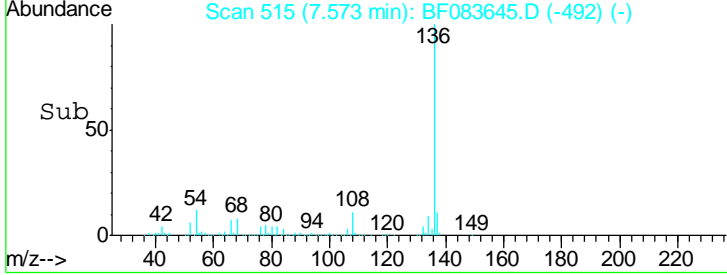
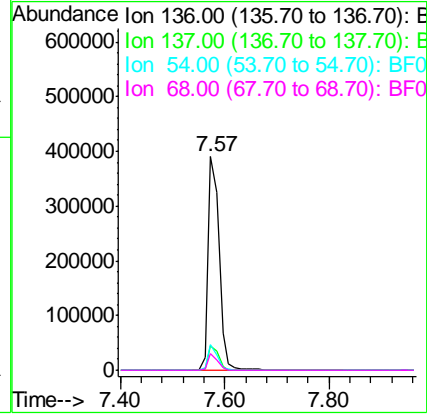
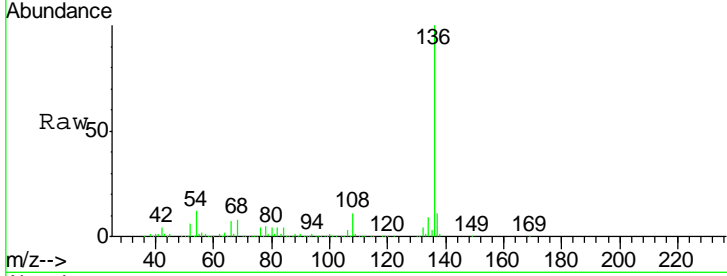




#21
 Naphthalene-d8
 Concen: 20.00 ng
 RT: 7.57 min Scan# 515
 Delta R.T. -0.03 min
 Lab File: BF083645.D
 Acq: 9 Dec 2015 18:02

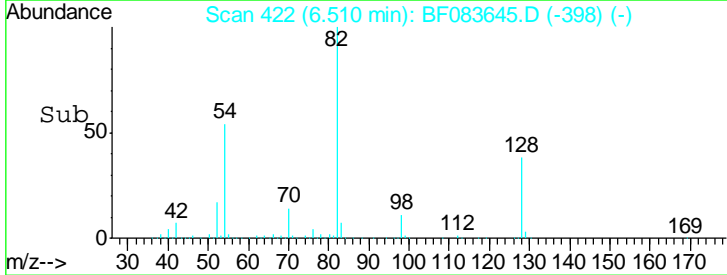
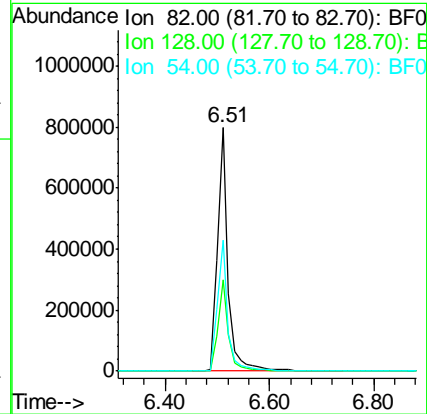
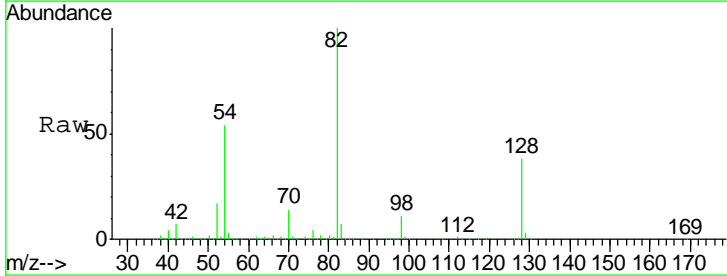
Instrument :
 BNA_F
ClientSampleId :
 LS-SB17A(6-6.5)

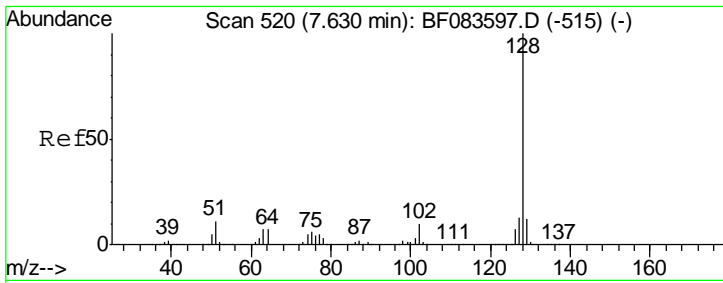
| Tgt Ion | Resp | Lower | Upper |
|---------|------|-------|-------|
| 136 | 100 | | |
| 137 | 11.2 | 8.7 | 13.1 |
| 54 | 11.7 | 7.8 | 11.6# |
| 68 | 7.9 | 5.7 | 8.5 |



#23
 Nitrobenzene-d5
 Concen: 89.58 ng
 RT: 6.51 min Scan# 422
 Delta R.T. -0.02 min
 Lab File: BF083645.D
 Acq: 9 Dec 2015 18:02

| Tgt Ion | Resp | Lower | Upper |
|---------|------|-------|-------|
| 82 | 100 | | |
| 128 | 37.5 | 30.7 | 46.1 |
| 54 | 53.8 | 42.5 | 63.7 |

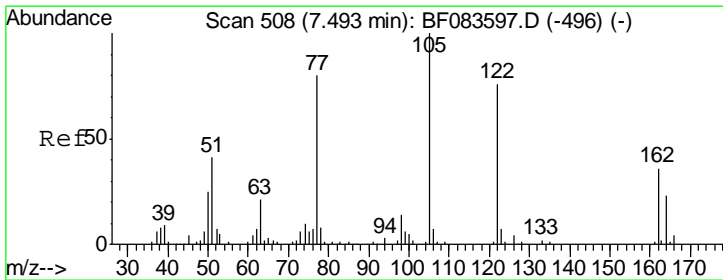
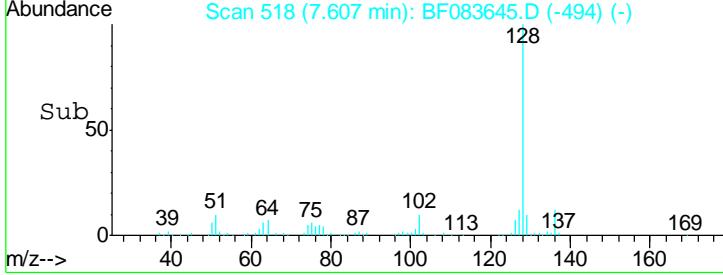
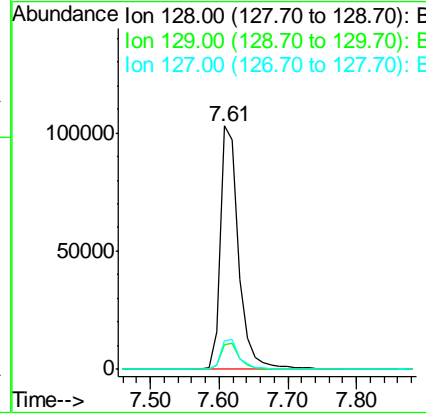
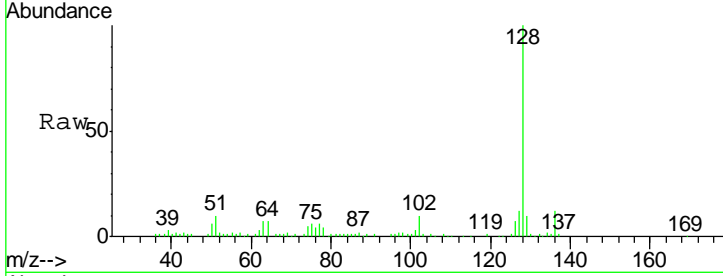




#31
 Naphthalene
 Concen: 6.36 ng
 RT: 7.61 min Scan# 518
 Delta R.T. -0.02 min
 Lab File: BF083645.D
 Acq: 9 Dec 2015 18:02

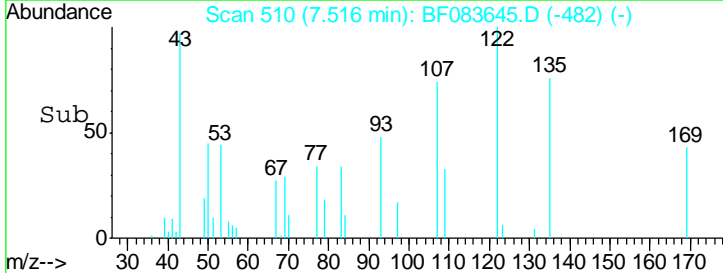
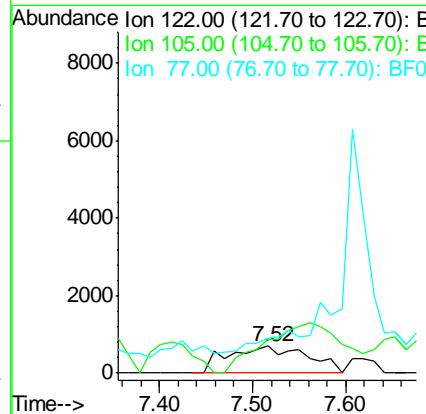
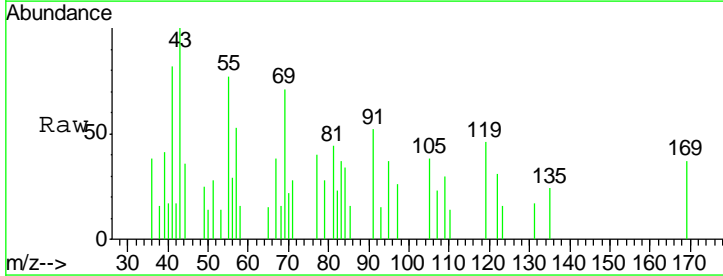
Instrument :
 BNA_F
 ClientSampleId :
 LS-SB17A(6-6.5)

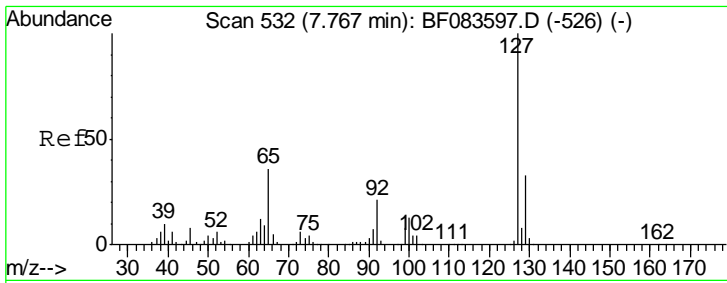
| Tgt Ion | Resp | Lower | Upper |
|---------|--------|-------|-------|
| 128 | 193751 | | |
| 129 | 10.4 | 8.6 | 13.0 |
| 127 | 11.9 | 10.6 | 16.0 |



#32
 Benzoic acid
 Concen: 3.67 ng
 RT: 7.52 min Scan# 510
 Delta R.T. 0.02 min
 Lab File: BF083645.D
 Acq: 9 Dec 2015 18:02

| Tgt Ion | Resp | Lower | Upper |
|---------|-------|-------|-------|
| 122 | 4089 | | |
| 105 | 122.5 | 105.6 | 145.6 |
| 77 | 126.5 | 86.8 | 126.8 |

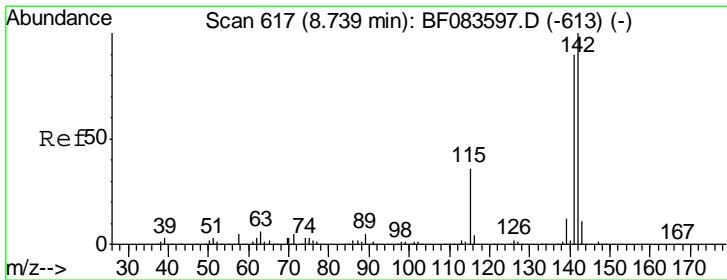
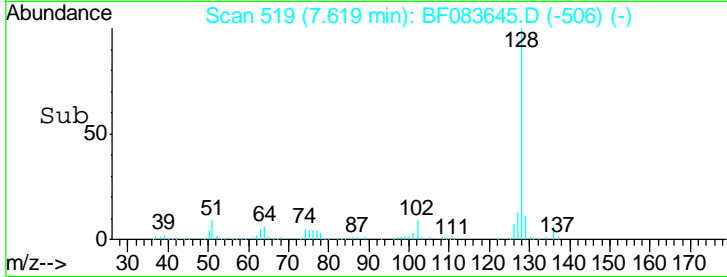
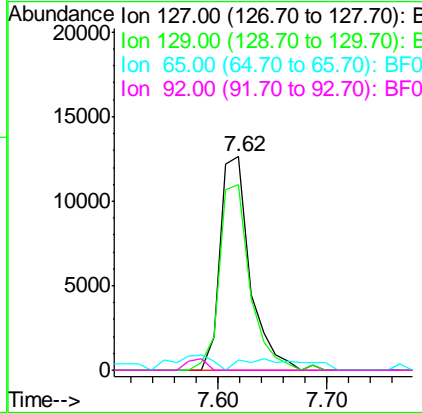
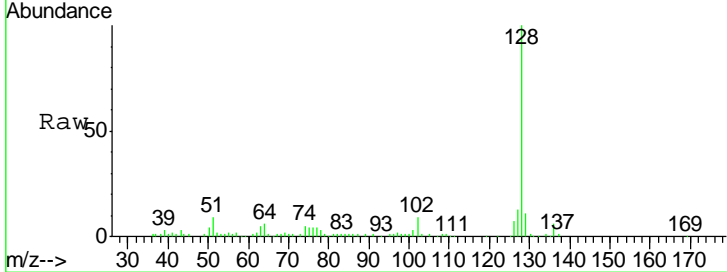




#33
 4-Chloroaniline
 Concen: 2.18 ng
 RT: 7.62 min Scan# 519
 Delta R.T. -0.15 min
 Lab File: BF083645.D
 Acq: 9 Dec 2015 18:02

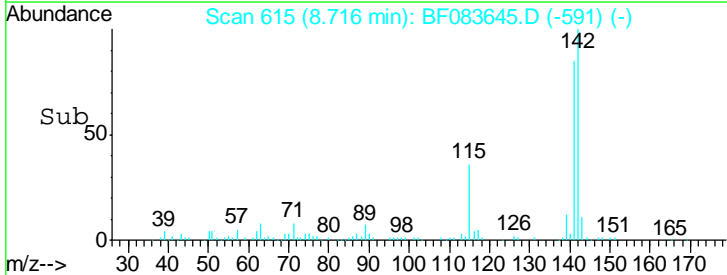
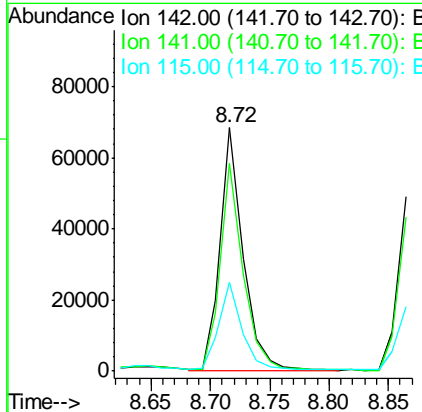
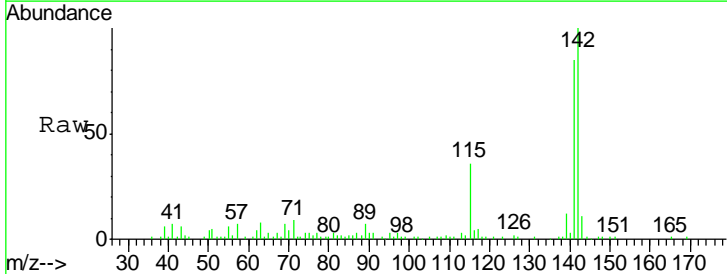
Instrument :
 BNA_F
ClientSampled :
 LS-SB17A(6-6.5)

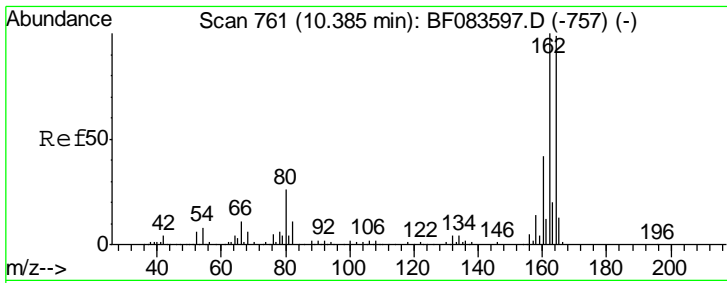
| Tgt Ion | Resp | Lower | Upper |
|---------|-------|-------|-------|
| 127 | 24223 | | |
| 129 | 87.0 | 26.1 | 39.1# |
| 65 | 4.8 | 33.5 | 50.3# |
| 92 | 0.0 | 18.6 | 28.0# |



#37
 2-Methylnaphthalene
 Concen: 4.83 ng
 RT: 8.72 min Scan# 615
 Delta R.T. -0.02 min
 Lab File: BF083645.D
 Acq: 9 Dec 2015 18:02

| Tgt Ion | Resp | Lower | Upper |
|---------|-------|-------|-------|
| 142 | 92505 | | |
| 141 | 85.1 | 70.3 | 105.5 |
| 115 | 36.2 | 29.2 | 43.8 |

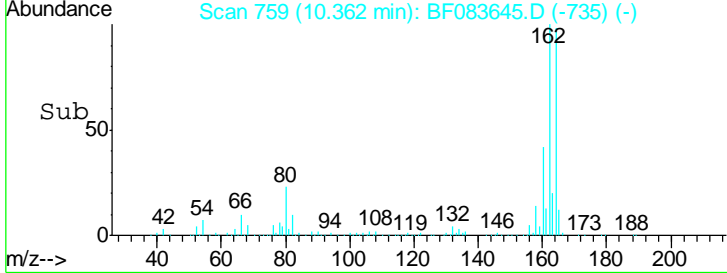
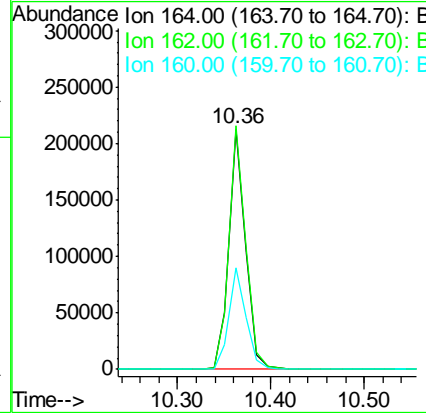
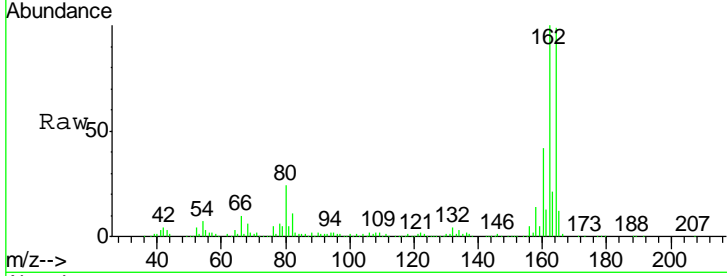




#38
 Acenaphthene-d10
 Concen: 20.00 ng
 RT: 10.36 min Scan# 759
 Delta R.T. -0.02 min
 Lab File: BF083645.D
 Acq: 9 Dec 2015 18:02

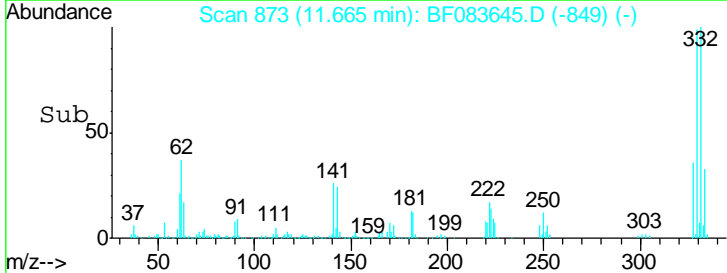
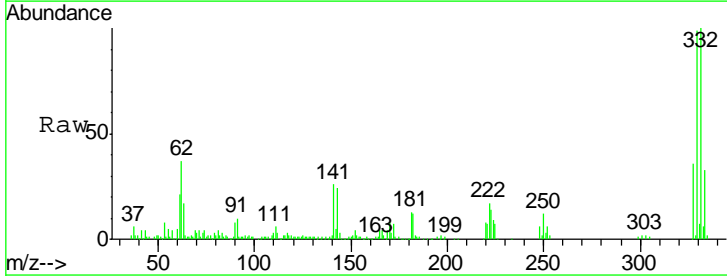
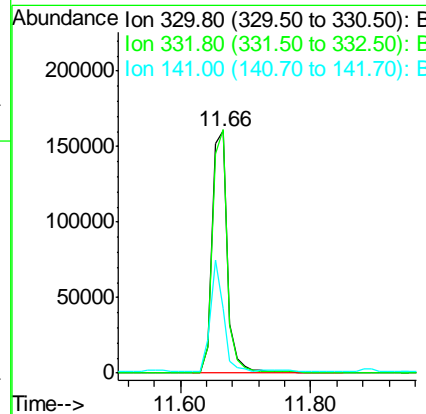
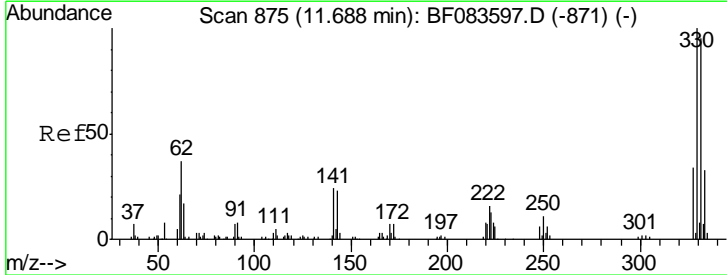
Instrument :
 BNA_F
 ClientSampleId :
 LS-SB17A(6-6.5)

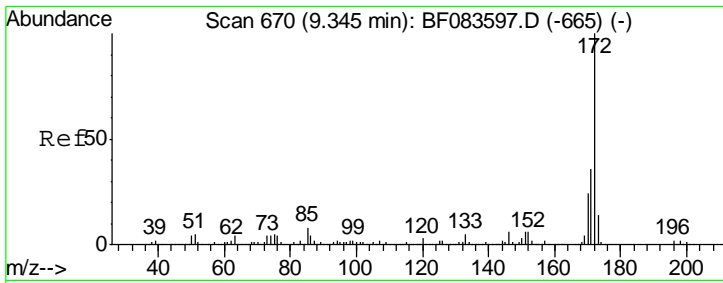
| Tgt Ion | Resp | Lower | Upper |
|---------|-------|-------|-------|
| 164 | 100 | | |
| 162 | 101.5 | 78.8 | 118.2 |
| 160 | 42.5 | 33.4 | 50.2 |



#41
 2,4,6-Tribromophenol
 Concen: 111.73 ng
 RT: 11.66 min Scan# 873
 Delta R.T. -0.02 min
 Lab File: BF083645.D
 Acq: 9 Dec 2015 18:02

| Tgt Ion | Resp | Lower | Upper |
|---------|------|-------|-------|
| 330 | 100 | | |
| 332 | 98.0 | 0.0 | 0.0# |
| 141 | 39.0 | 0.0 | 0.0# |

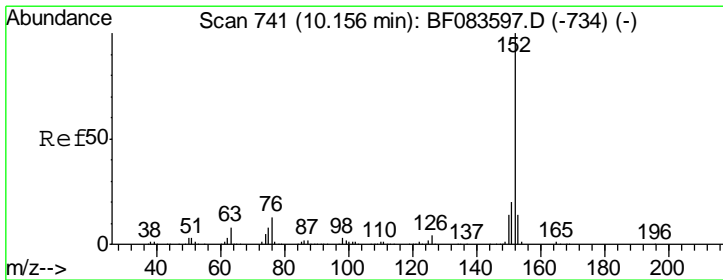
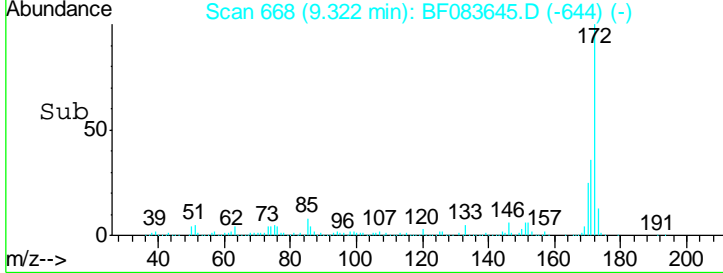
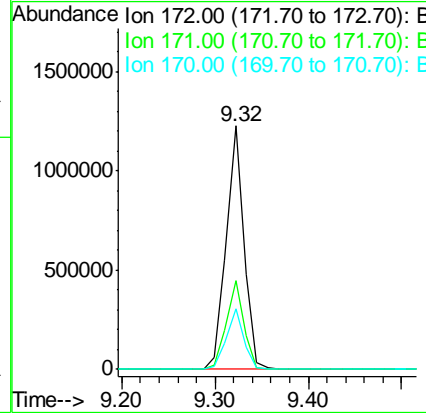
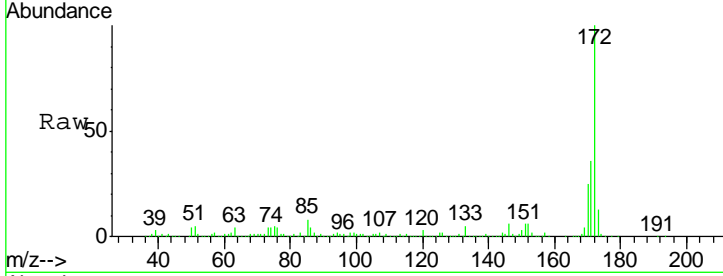




#44
 2-Fluorobiphenyl
 Concen: 86.16 ng
 RT: 9.32 min Scan# 668
 Delta R.T. -0.02 min
 Lab File: BF083645.D
 Acq: 9 Dec 2015 18:02

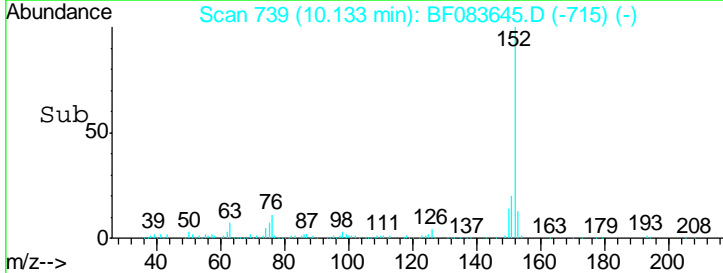
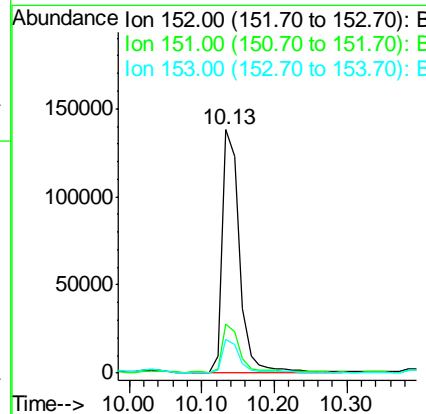
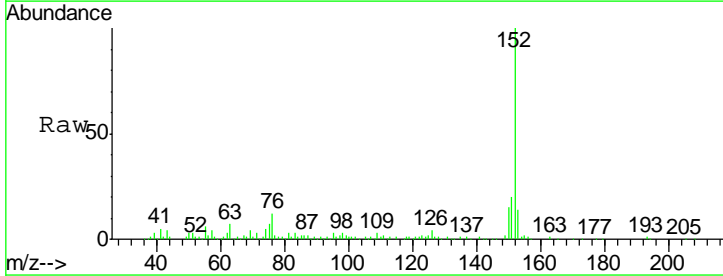
Instrument :
 BNA_F
 ClientSampleId :
 LS-SB17A(6-6.5)

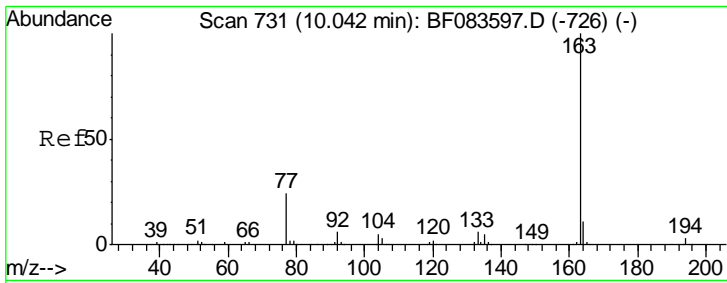
| Tgt Ion | Resp | Lower | Upper |
|---------|---------|-------|-------|
| 172 | 1629573 | | |
| 171 | 36.5 | 28.6 | 42.8 |
| 170 | 24.7 | 19.4 | 29.0 |



#48
 Acenaphthylene
 Concen: 8.08 ng
 RT: 10.13 min Scan# 739
 Delta R.T. -0.02 min
 Lab File: BF083645.D
 Acq: 9 Dec 2015 18:02

| Tgt Ion | Resp | Lower | Upper |
|---------|--------|-------|-------|
| 152 | 232643 | | |
| 151 | 20.0 | 16.3 | 24.5 |
| 153 | 13.8 | 10.8 | 16.2 |

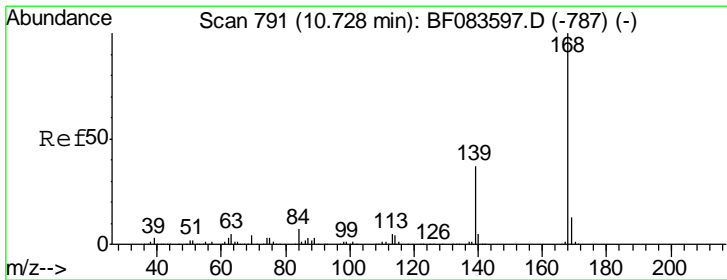
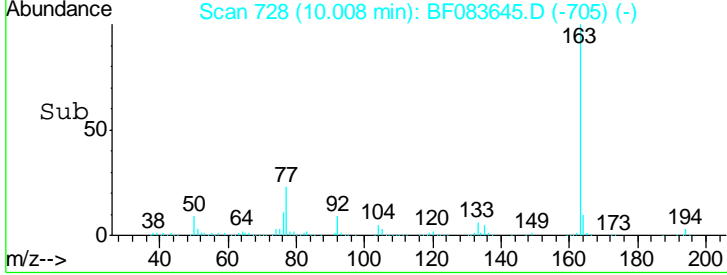
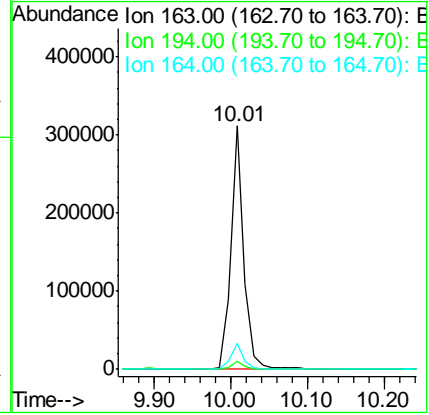
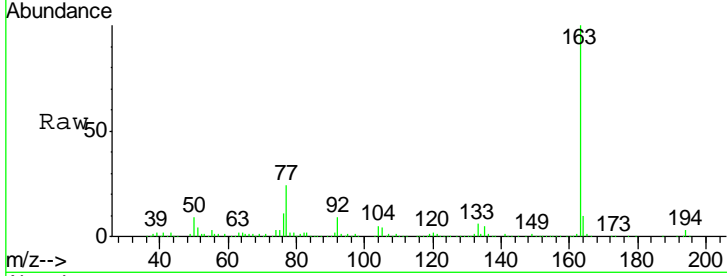




#49
 Dimethylphthalate
 Concen: 17.38 ng
 RT: 10.01 min Scan# 728
 Delta R.T. -0.03 min
 Lab File: BF083645.D
 Acq: 9 Dec 2015 18:02

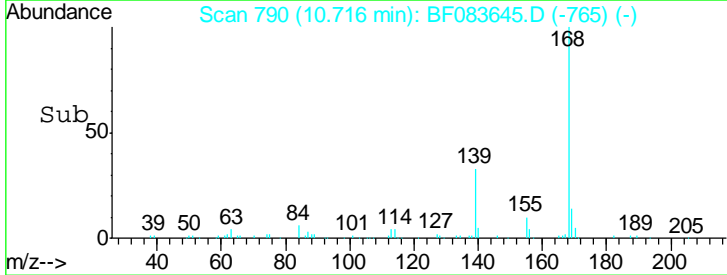
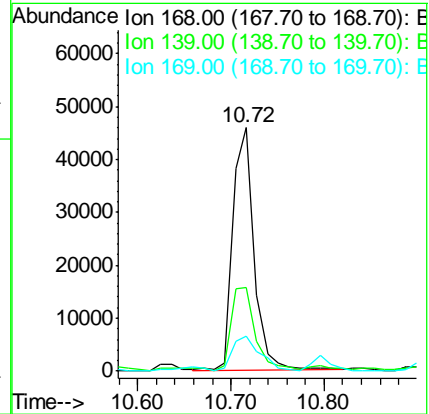
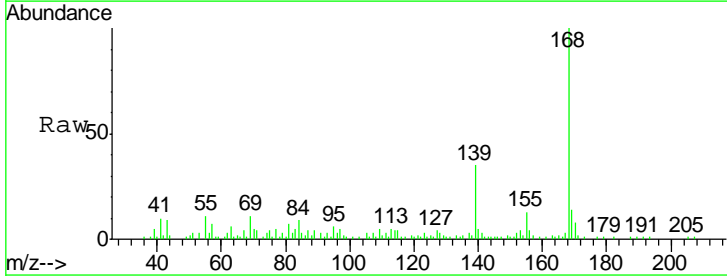
Instrument :
 BNA_F
 ClientSampleId :
 LS-SB17A(6-6.5)

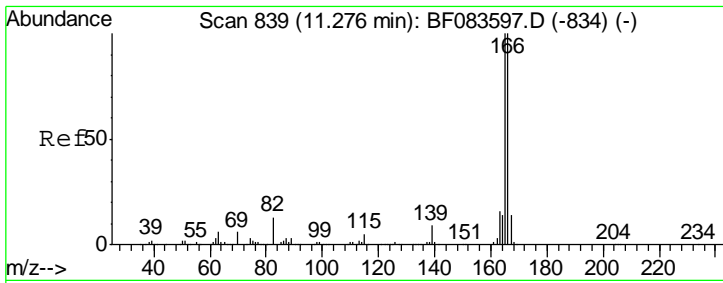
| Tgt Ion | Resp | Lower | Upper |
|---------|------|-------|-------|
| 163 | 100 | | |
| 194 | 3.2 | 2.8 | 4.2 |
| 164 | 10.4 | 8.6 | 13.0 |



#54
 Dibenzofuran
 Concen: 3.19 ng
 RT: 10.72 min Scan# 790
 Delta R.T. -0.01 min
 Lab File: BF083645.D
 Acq: 9 Dec 2015 18:02

| Tgt Ion | Resp | Lower | Upper |
|---------|------|-------|-------|
| 168 | 100 | | |
| 139 | 34.5 | 28.0 | 42.0 |
| 169 | 14.2 | 10.8 | 16.2 |

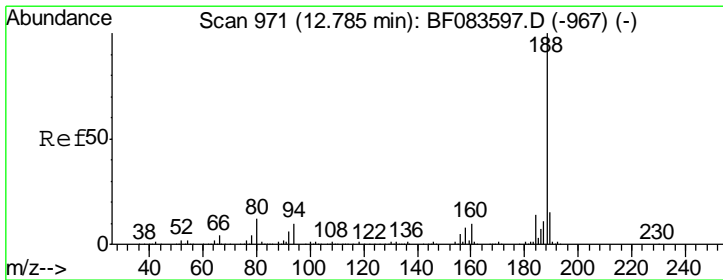
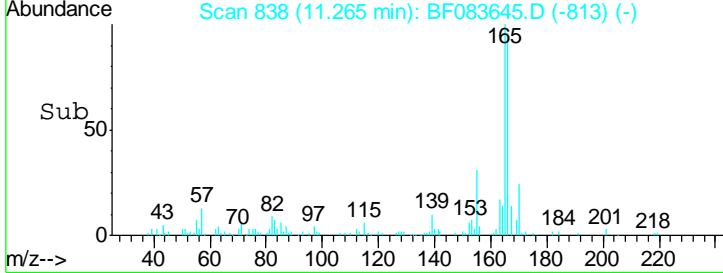
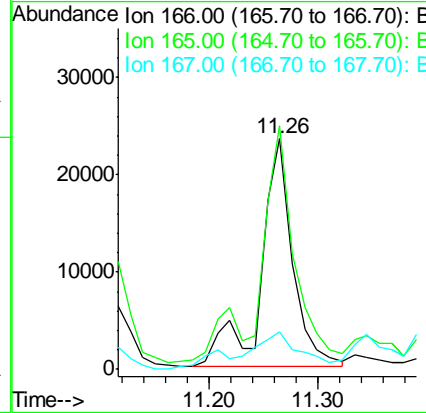
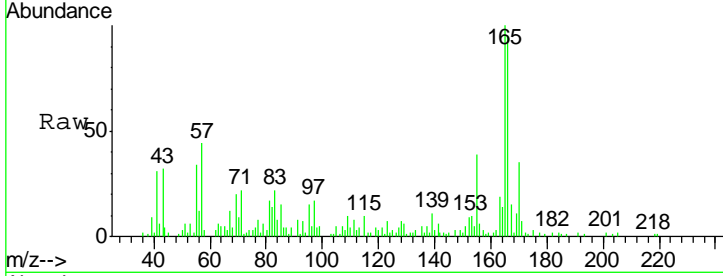




#57
 Fluorene
 Concen: 2.42 ng
 RT: 11.26 min Scan# 838
 Delta R.T. -0.01 min
 Lab File: BF083645.D
 Acq: 9 Dec 2015 18:02

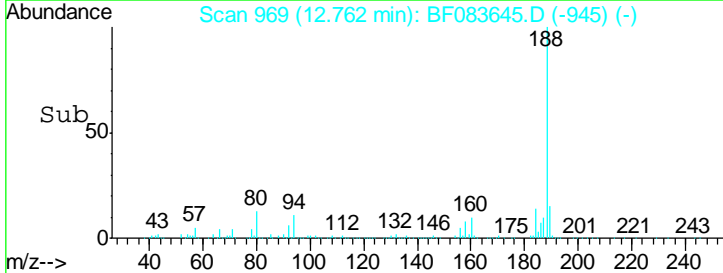
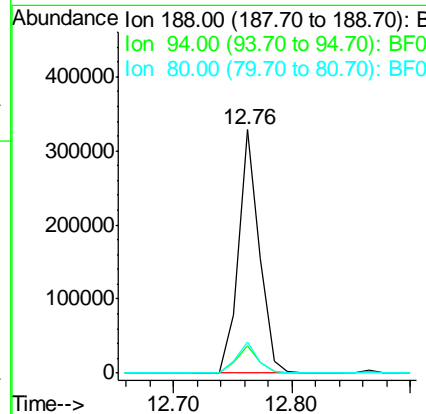
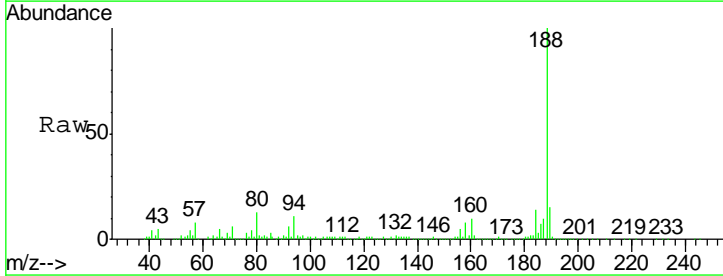
Instrument :
 BNA_F
ClientSampled :
 LS-SB17A(6-6.5)

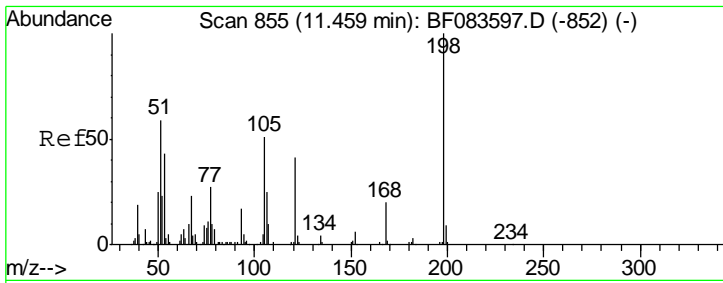
| Tgt Ion | Resp | Lower | Upper |
|---------|-------|-------|-------|
| 166 | 100 | | |
| 165 | 105.7 | 80.0 | 120.0 |
| 167 | 16.1 | 10.6 | 16.0# |



#63
 Phenanthrene-d10
 Concen: 20.00 ng
 RT: 12.76 min Scan# 969
 Delta R.T. -0.02 min
 Lab File: BF083645.D
 Acq: 9 Dec 2015 18:02

| Tgt Ion | Resp | Lower | Upper |
|---------|------|-------|-------|
| 188 | 100 | | |
| 94 | 11.0 | 9.4 | 14.2 |
| 80 | 12.8 | 10.6 | 16.0 |

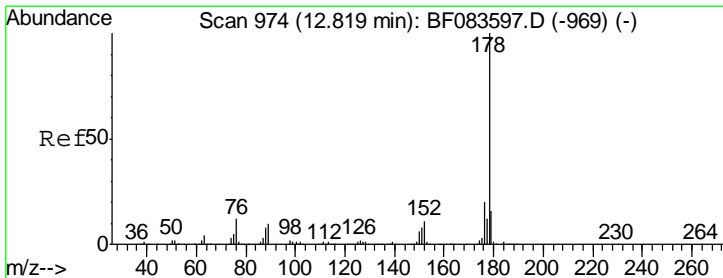
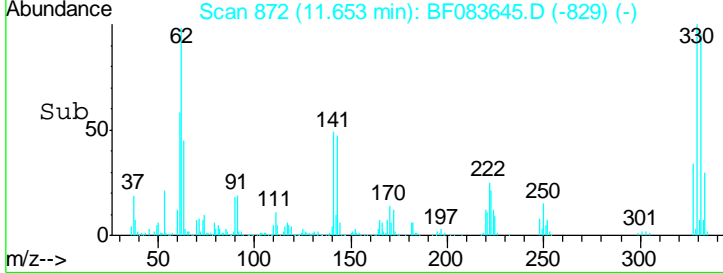
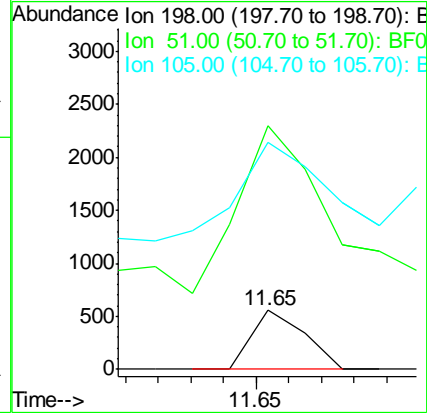
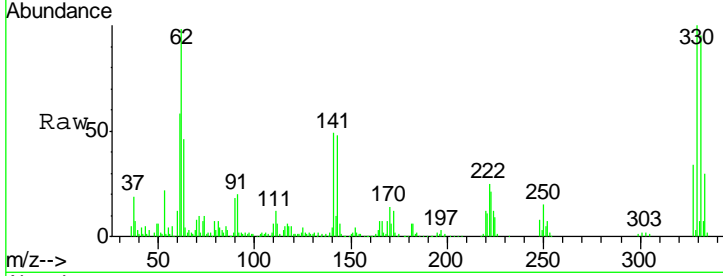




#64
 4,6-Dinitro-2-methylphenol
 Concen: 2.16 ng
 RT: 11.65 min Scan# 872
 Delta R.T. 0.19 min
 Lab File: BF083645.D
 Acq: 9 Dec 2015 18:02

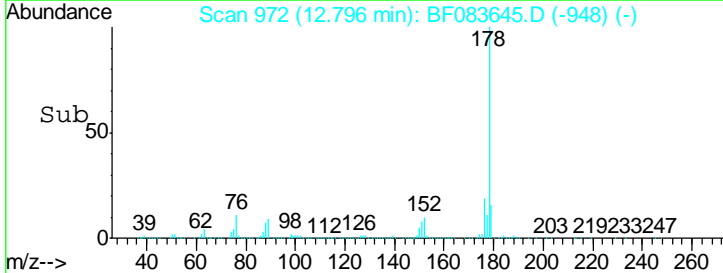
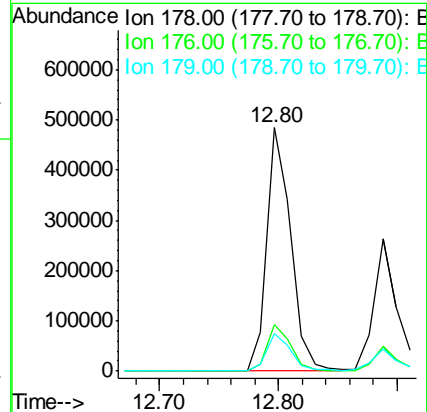
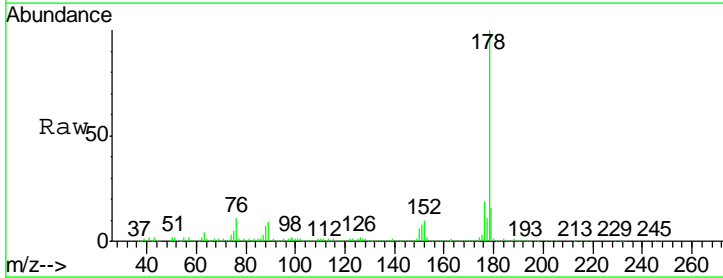
Instrument :
 BNA_F
 ClientSampleId :
 LS-SB17A(6-6.5)

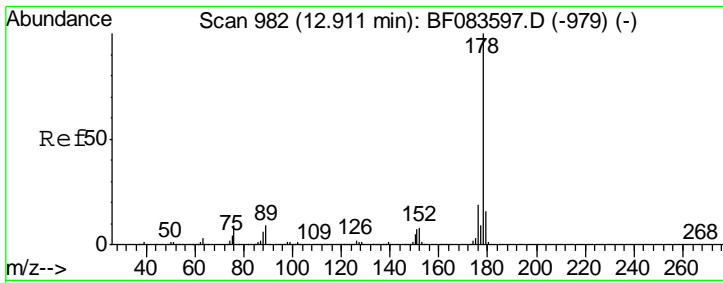
| Tgt Ion | Resp | Lower | Upper |
|---------|-------|-------|-------|
| 198 | 621 | | |
| 51 | 411.6 | 53.8 | 93.8# |
| 105 | 384.4 | 38.6 | 78.6# |



#70
 Phenanthrene
 Concen: 29.45 ng
 RT: 12.80 min Scan# 972
 Delta R.T. -0.02 min
 Lab File: BF083645.D
 Acq: 9 Dec 2015 18:02

| Tgt Ion | Resp | Lower | Upper |
|---------|--------|-------|-------|
| 178 | 678740 | | |
| 176 | 19.1 | 15.7 | 23.5 |
| 179 | 15.7 | 12.2 | 18.4 |

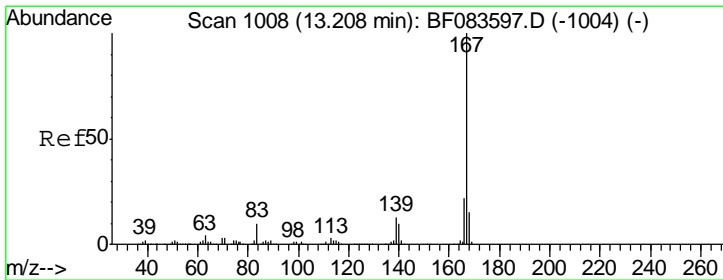
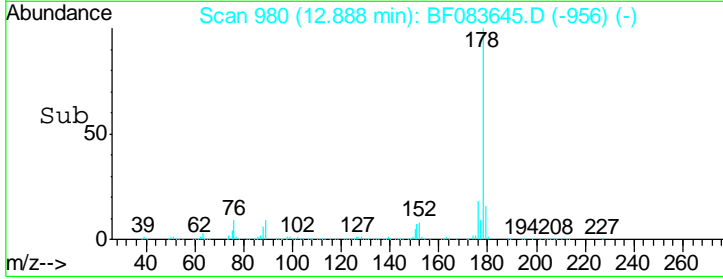
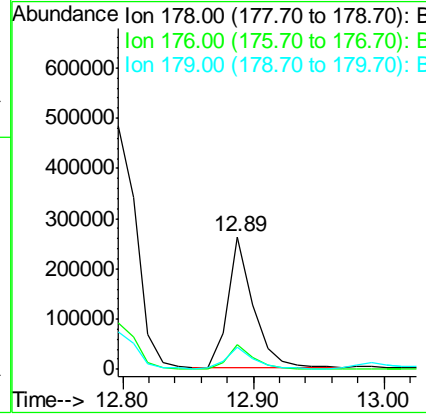
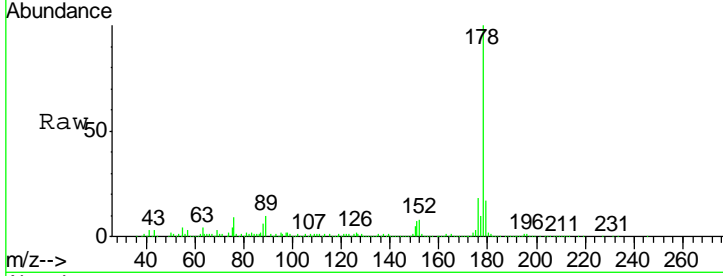




#71
 Anthracene
 Concen: 14.88 ng
 RT: 12.89 min Scan# 980
 Delta R.T. -0.02 min
 Lab File: BF083645.D
 Acq: 9 Dec 2015 18:02

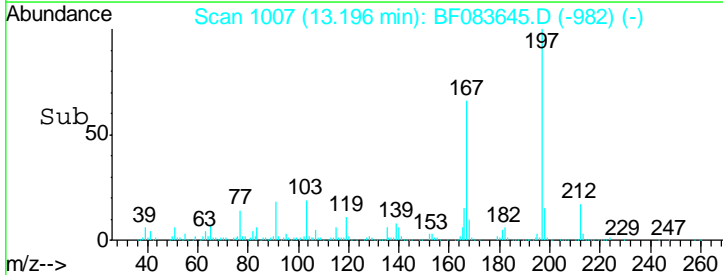
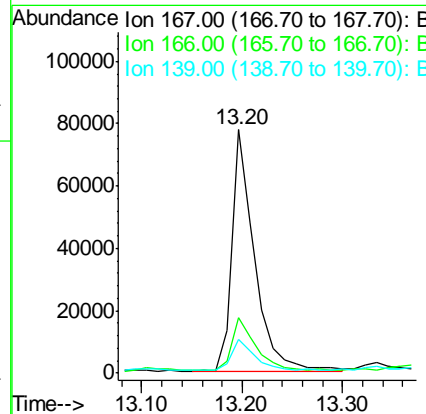
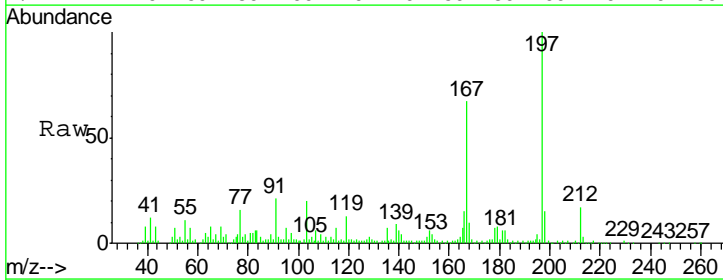
Instrument :
 BNA_F
 ClientSampled :
 LS-SB17A(6-6.5)

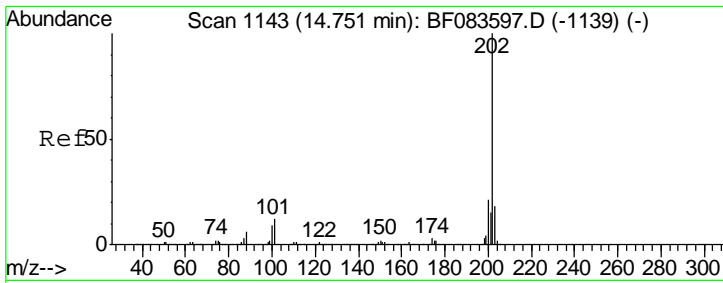
| Tgt Ion | Resp | Lower | Upper |
|---------|------|-------|-------|
| 178 | 100 | | |
| 176 | 18.4 | 15.2 | 22.8 |
| 179 | 16.6 | 12.6 | 18.8 |



#72
 Carbazole
 Concen: 5.83 ng
 RT: 13.20 min Scan# 1007
 Delta R.T. -0.01 min
 Lab File: BF083645.D
 Acq: 9 Dec 2015 18:02

| Tgt Ion | Resp | Lower | Upper |
|---------|------|-------|-------|
| 167 | 100 | | |
| 166 | 22.8 | 17.2 | 25.8 |
| 139 | 13.9 | 9.3 | 13.9 |

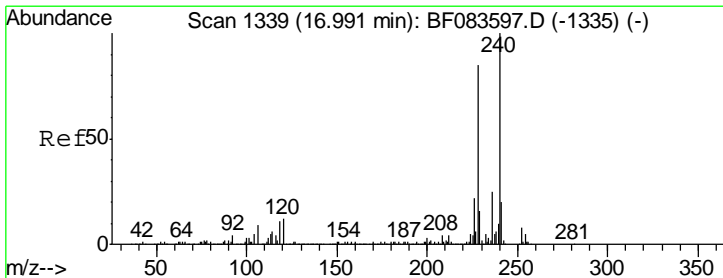
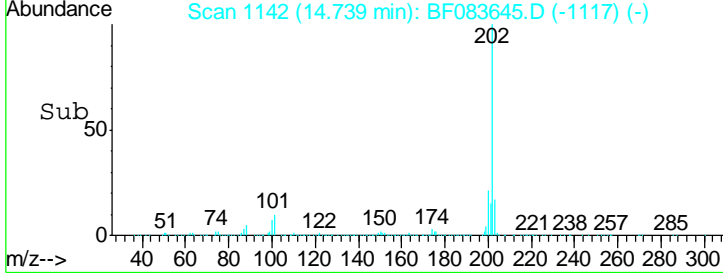
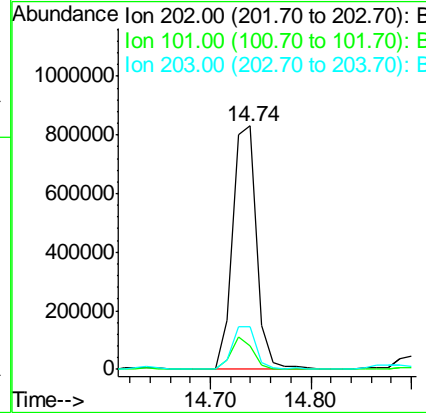
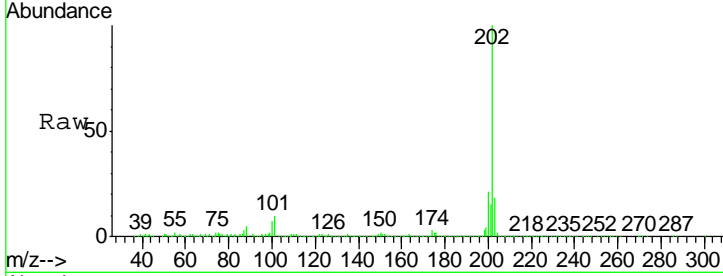




#74
 Fluoranthene
 Concen: 58.08 ng
 RT: 14.74 min Scan# 1142
 Delta R.T. -0.01 min
 Lab File: BF083645.D
 Acq: 9 Dec 2015 18:02

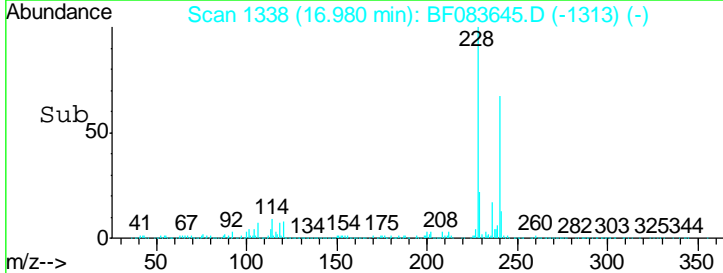
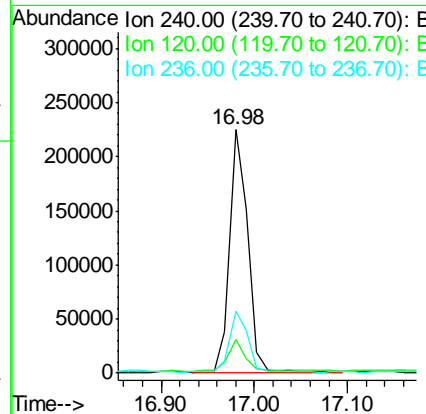
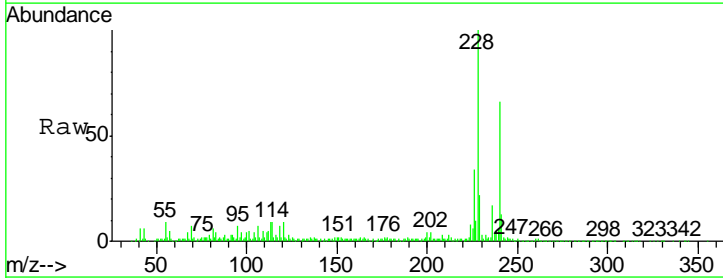
Instrument :
 BNA_F
 ClientSampled :
 LS-SB17A(6-6.5)

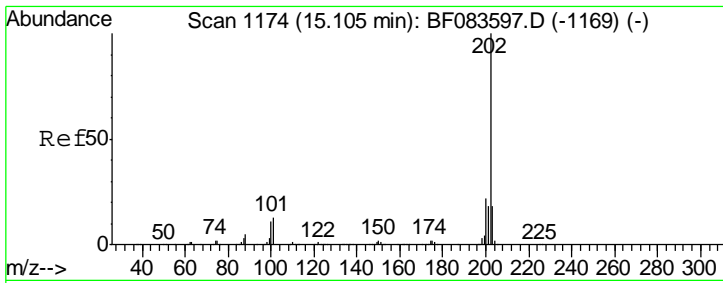
| Tgt Ion | Resp | Lower | Upper |
|---------|---------|-------|-------|
| 202 | 1369655 | | |
| 101 | 9.8 | 0.0 | 31.5 |
| 203 | 17.6 | 0.0 | 37.6 |



#75
 Chrysene-d12
 Concen: 20.00 ng
 RT: 16.98 min Scan# 1338
 Delta R.T. -0.01 min
 Lab File: BF083645.D
 Acq: 9 Dec 2015 18:02

| Tgt Ion | Resp | Lower | Upper |
|---------|--------|-------|-------|
| 240 | 300965 | | |
| 120 | 13.6 | 8.1 | 12.1# |
| 236 | 25.6 | 20.8 | 31.2 |



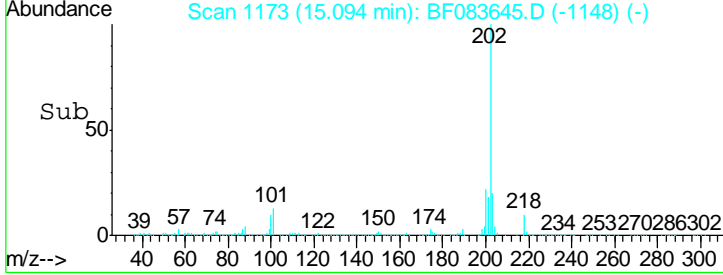
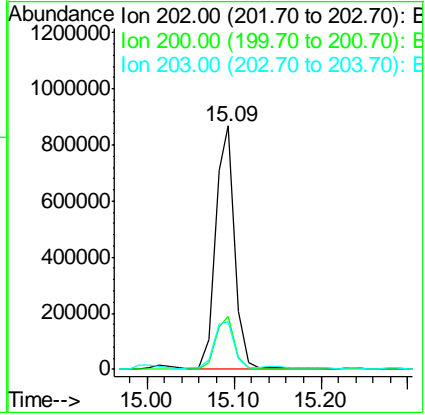
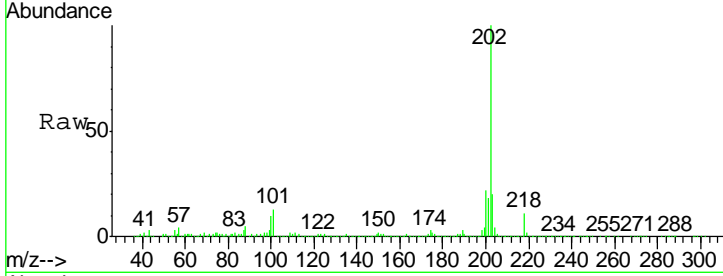


#77
 Pyrene
 Concen: 61.41 ng
 RT: 15.09 min Scan# 1173
 Delta R.T. -0.01 min
 Lab File: BF083645.D
 Acq: 9 Dec 2015 18:02

Instrument :
 BNA_F
ClientSampled :
 LS-SB17A(6-6.5)

Tgt Ion: 202 Resp: 1330707

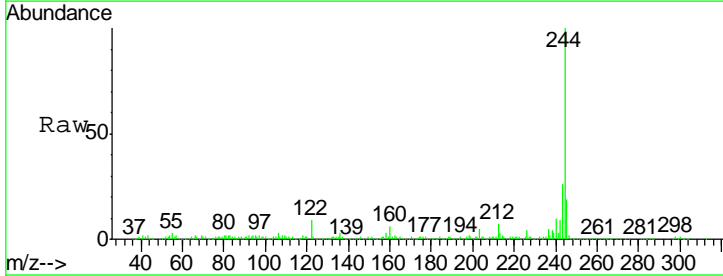
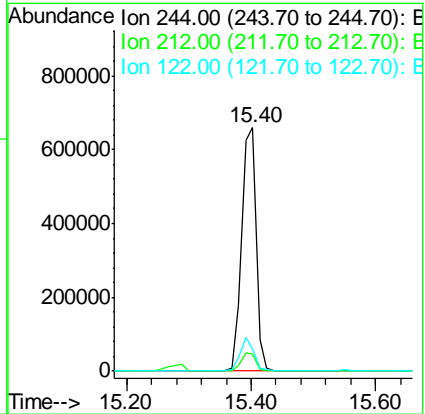
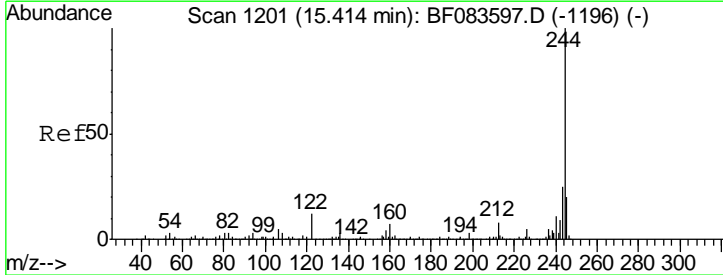
| Ion | Ratio | Lower | Upper |
|-----|-------|-------|-------|
| 202 | 100 | | |
| 200 | 21.7 | 16.7 | 25.1 |
| 203 | 19.9 | 14.3 | 21.5 |

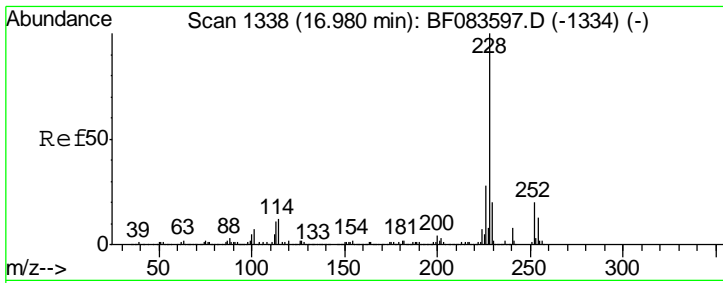


#78
 Terphenyl-d14
 Concen: 84.76 ng
 RT: 15.40 min Scan# 1200
 Delta R.T. -0.01 min
 Lab File: BF083645.D
 Acq: 9 Dec 2015 18:02

Tgt Ion: 244 Resp: 1084151

| Ion | Ratio | Lower | Upper |
|-----|-------|-------|-------|
| 244 | 100 | | |
| 212 | 7.2 | 6.1 | 9.1 |
| 122 | 9.0 | 11.0 | 16.6# |

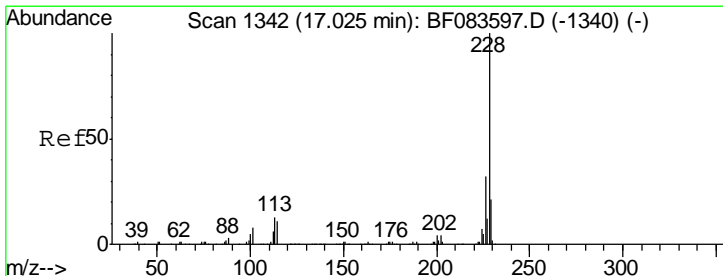
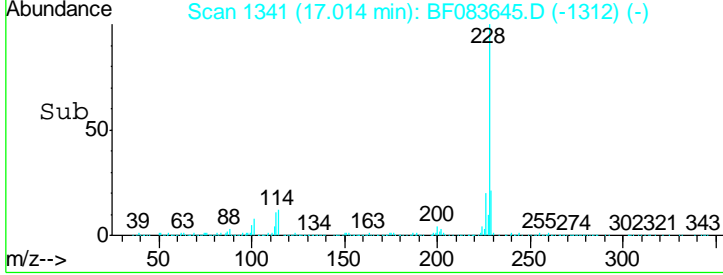
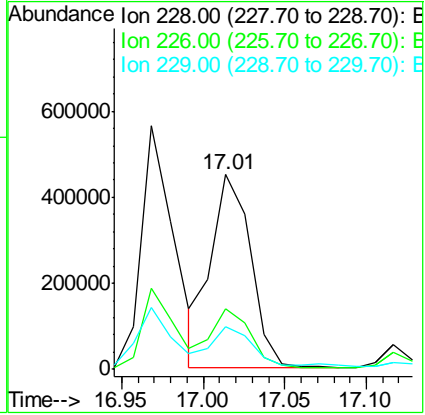
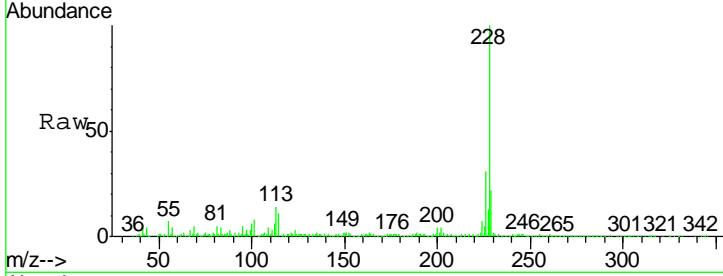




#80
 Benzo(a)anthracene
 Concen: 42.80 ng
 RT: 17.01 min Scan# 1341
 Delta R.T. 0.03 min
 Lab File: BF083645.D
 Acq: 9 Dec 2015 18:02

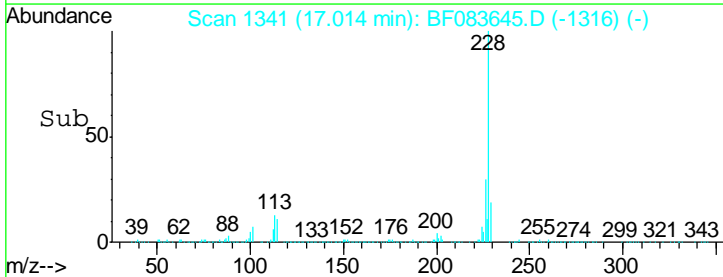
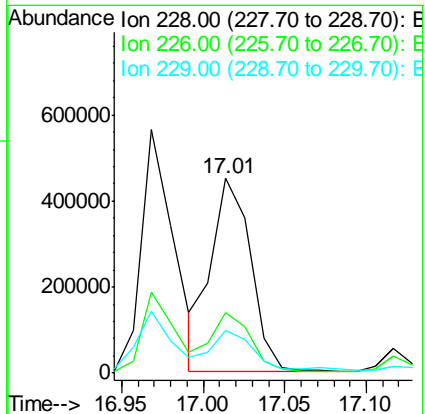
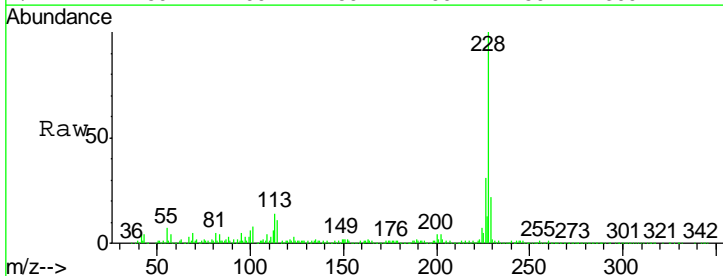
Instrument :
 BNA_F
 ClientSampleId :
 LS-SB17A(6-6.5)

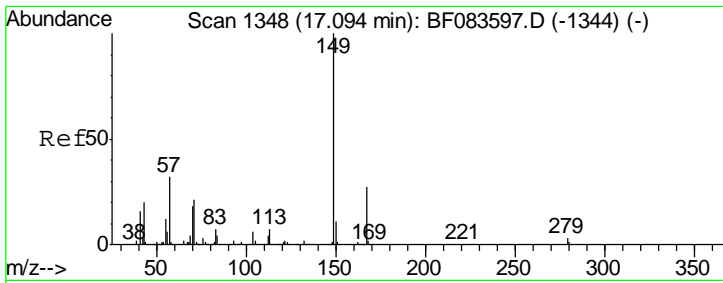
| Tgt Ion | Resp | Lower | Upper |
|---------|------|-------|-------|
| 228 | 100 | | |
| 226 | 31.1 | 22.3 | 33.5 |
| 229 | 21.7 | 15.7 | 23.5 |



#82
 Chrysene
 Concen: 43.21 ng
 RT: 17.01 min Scan# 1341
 Delta R.T. -0.01 min
 Lab File: BF083645.D
 Acq: 9 Dec 2015 18:02

| Tgt Ion | Resp | Lower | Upper |
|---------|------|-------|-------|
| 228 | 100 | | |
| 226 | 31.1 | 24.7 | 37.1 |
| 229 | 21.7 | 16.3 | 24.5 |

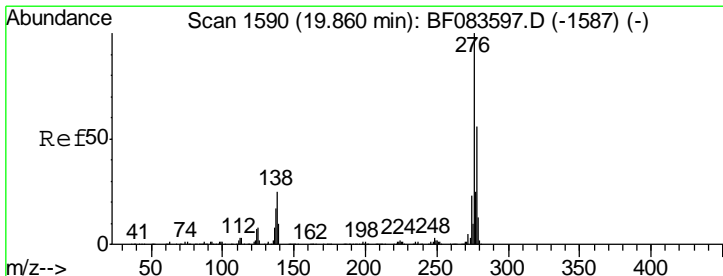
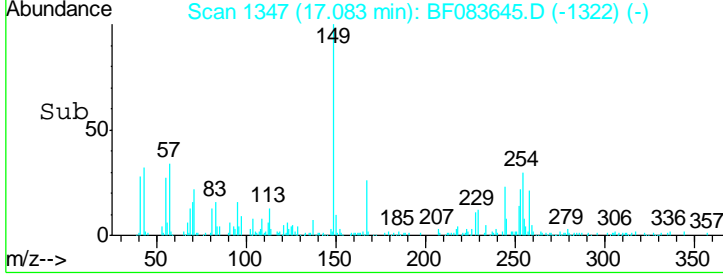
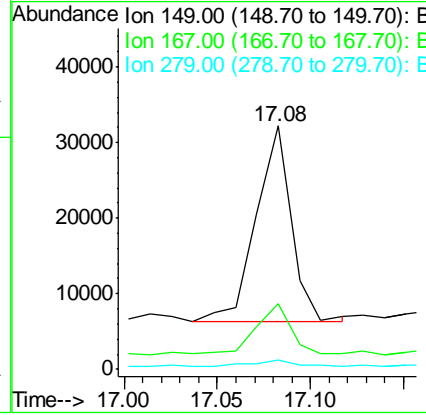
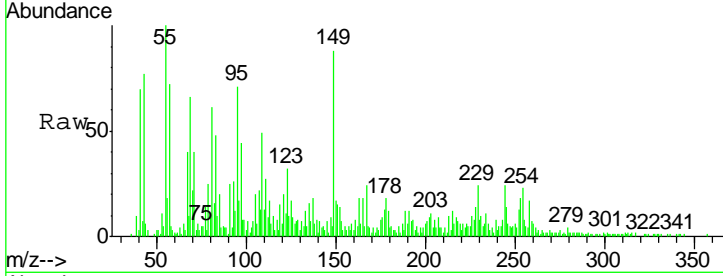




#83
 Bis(2-ethylhexyl)phthalate
 Concen: 2.57 ng
 RT: 17.08 min Scan# 1347
 Delta R.T. -0.01 min
 Lab File: BF083645.D
 Acq: 9 Dec 2015 18:02

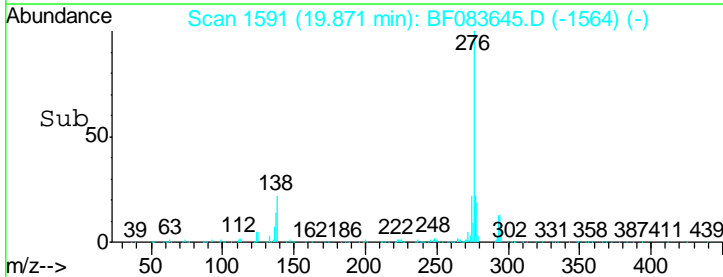
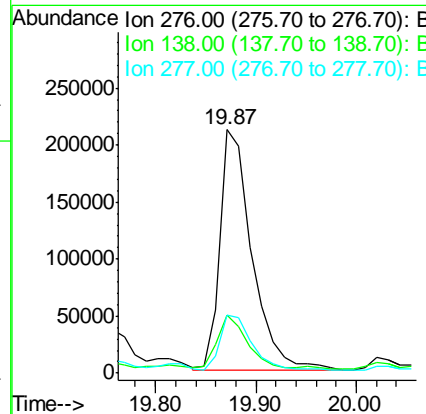
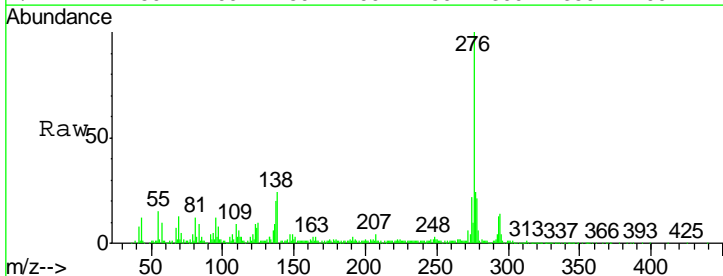
Instrument :
 BNA_F
 ClientSampleId :
 LS-SB17A(6-6.5)

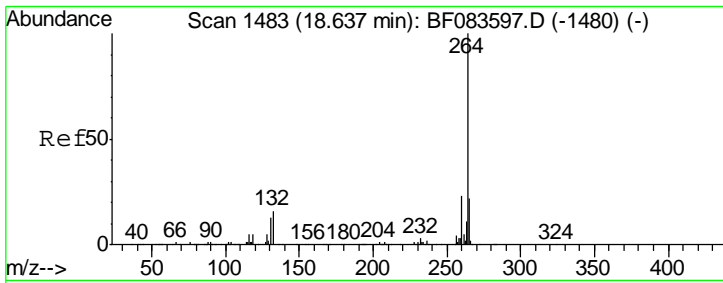
| Tgt Ion | Resp | Lower | Upper |
|---------|------|-------|-------|
| 149 | 100 | | |
| 167 | 27.2 | 21.8 | 32.8 |
| 279 | 4.1 | 3.0 | 4.4 |



#85
 Indeno(1,2,3-cd)pyrene
 Concen: 38.94 ng
 RT: 19.87 min Scan# 1591
 Delta R.T. 0.01 min
 Lab File: BF083645.D
 Acq: 9 Dec 2015 18:02

| Tgt Ion | Resp | Lower | Upper |
|---------|------|-------|-------|
| 276 | 100 | | |
| 138 | 19.8 | 0.0 | 0.0# |
| 277 | 23.1 | 0.0 | 0.0# |



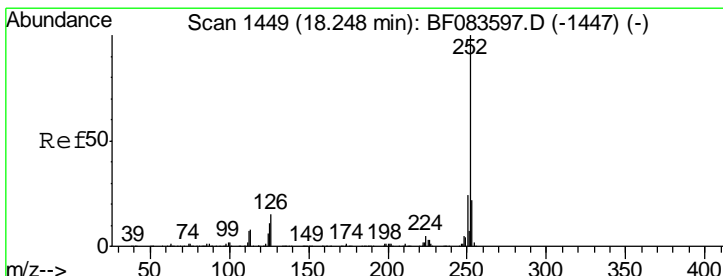
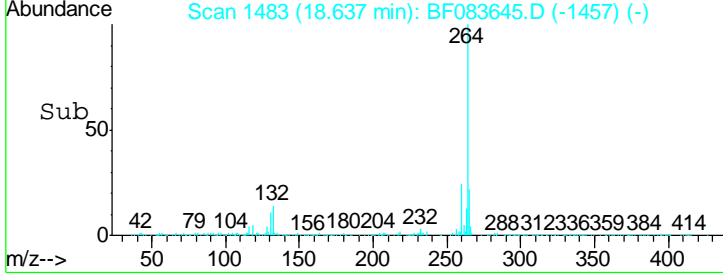
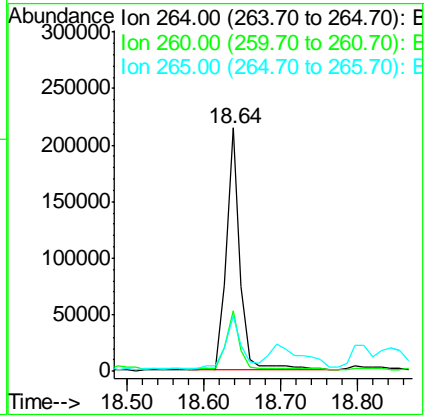
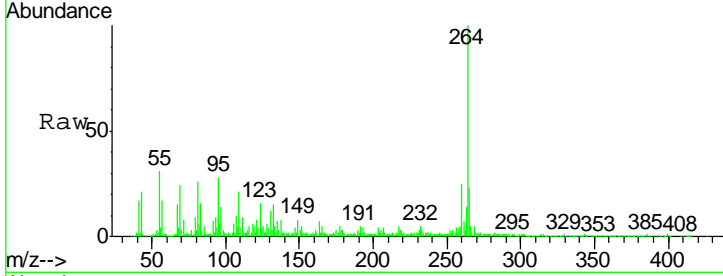


#86
 Perylene-d12
 Concen: 20.00 ng
 RT: 18.64 min Scan# 1483
 Delta R.T. 0.00 min
 Lab File: BF083645.D
 Acq: 9 Dec 2015 18:02

Instrument :
 BNA_F
 ClientSampleId :
 LS-SB17A(6-6.5)

Tgt Ion: 264 Resp: 274092

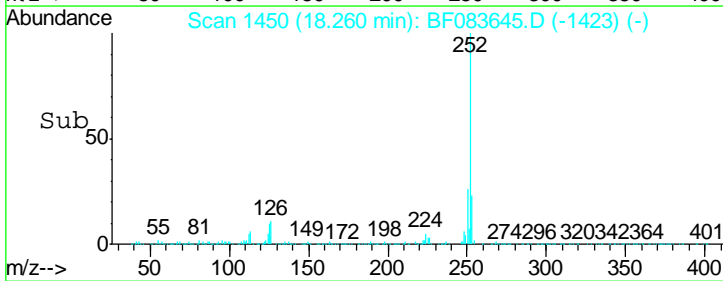
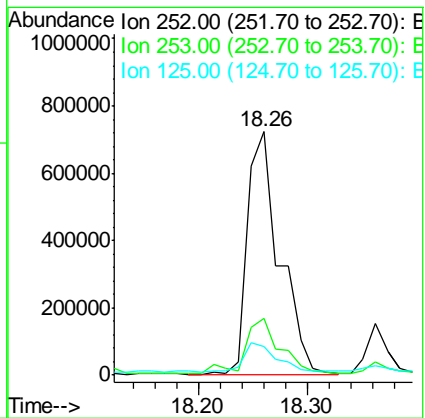
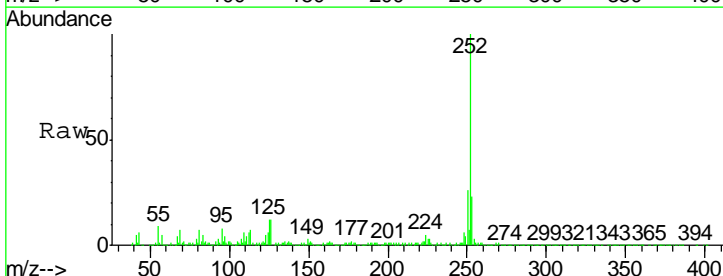
| Ion | Ratio | Lower | Upper |
|-----|-------|-------|-------|
| 264 | 100 | | |
| 260 | 24.8 | 19.4 | 29.0 |
| 265 | 22.8 | 17.8 | 26.6 |

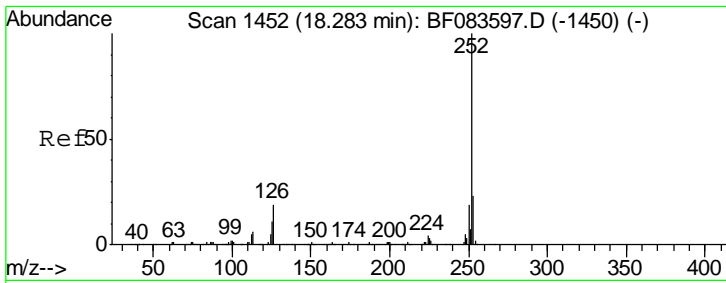


#87
 Benzo(b)fluoranthene
 Concen: 94.60 ng
 RT: 18.26 min Scan# 1450
 Delta R.T. 0.01 min
 Lab File: BF083645.D
 Acq: 9 Dec 2015 18:02

Tgt Ion: 252 Resp: 1476459

| Ion | Ratio | Lower | Upper |
|-----|-------|-------|-------|
| 252 | 100 | | |
| 253 | 23.2 | 18.2 | 27.4 |
| 125 | 11.7 | 8.2 | 12.4 |



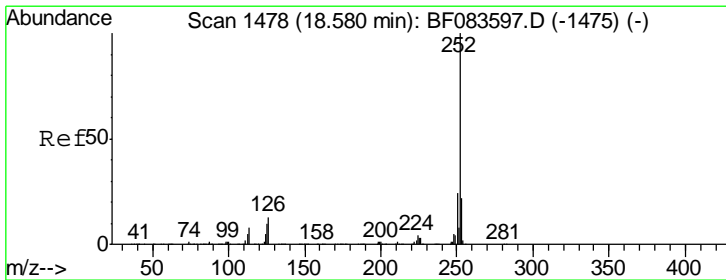
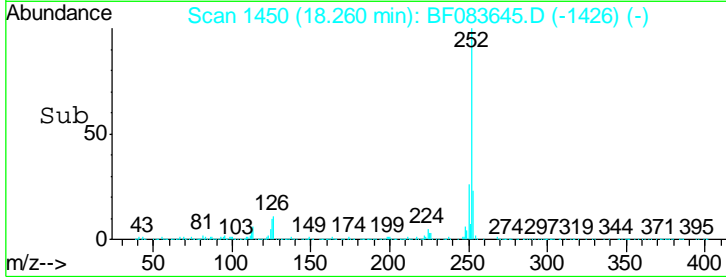
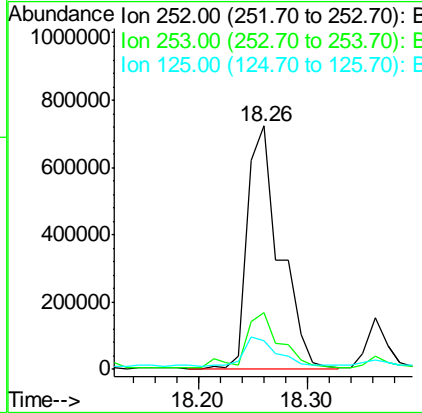
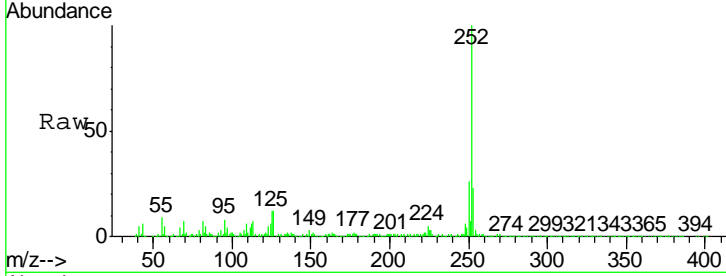


#88
 Benzo(k)fluoranthene
 Concen: 85.85 ng
 RT: 18.26 min Scan# 1450
 Delta R.T. -0.02 min
 Lab File: BF083645.D
 Acq: 9 Dec 2015 18:02

Instrument :
 BNA_F
 ClientSampled :
 LS-SB17A(6-6.5)

Tgt Ion: 252 Resp: 1476459

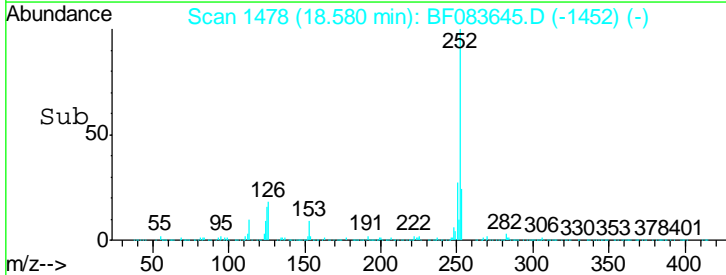
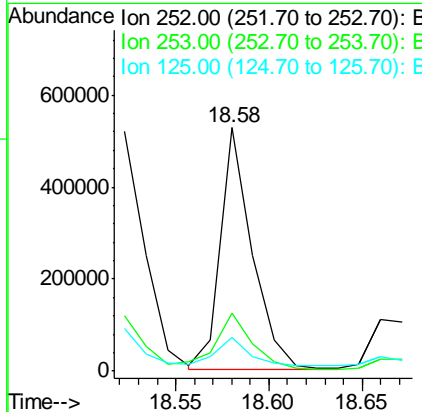
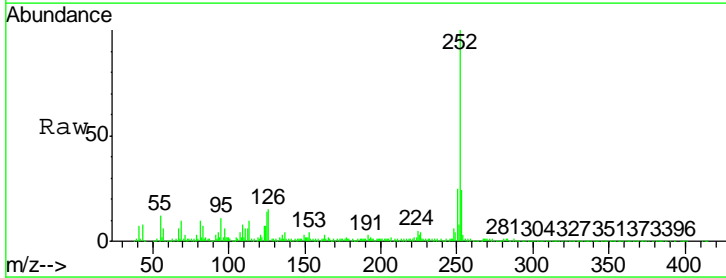
| Ion | Ratio | Lower | Upper |
|-----|-------|-------|-------|
| 252 | 100 | | |
| 253 | 23.2 | 18.6 | 27.8 |
| 125 | 11.7 | 11.5 | 17.3 |

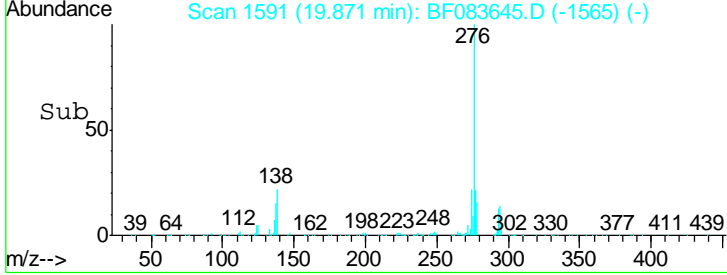
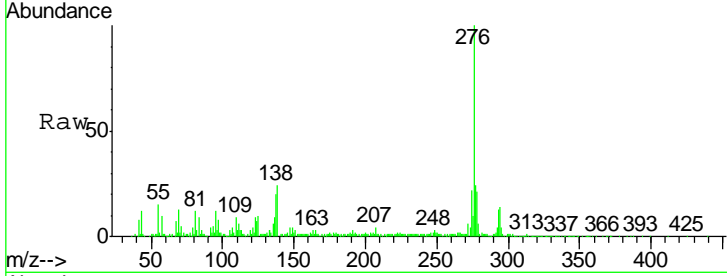
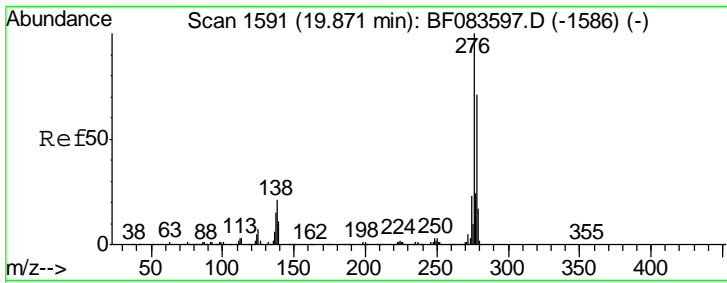


#89
 Benzo(a)pyrene
 Concen: 41.25 ng
 RT: 18.58 min Scan# 1478
 Delta R.T. 0.00 min
 Lab File: BF083645.D
 Acq: 9 Dec 2015 18:02

Tgt Ion: 252 Resp: 628250

| Ion | Ratio | Lower | Upper |
|-----|-------|-------|-------|
| 252 | 100 | | |
| 253 | 23.7 | 17.5 | 26.3 |
| 125 | 13.8 | 11.0 | 16.6 |

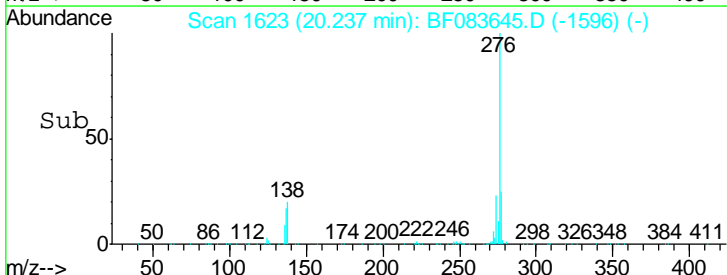
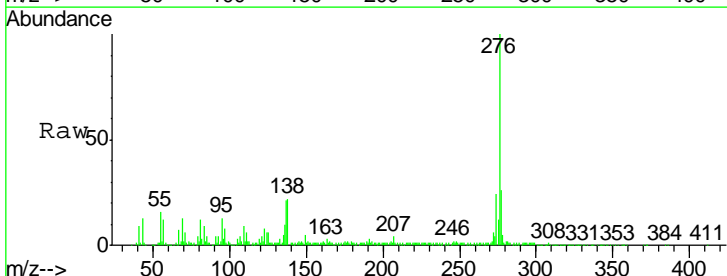
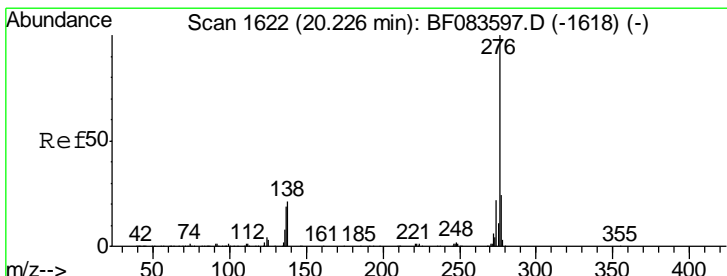
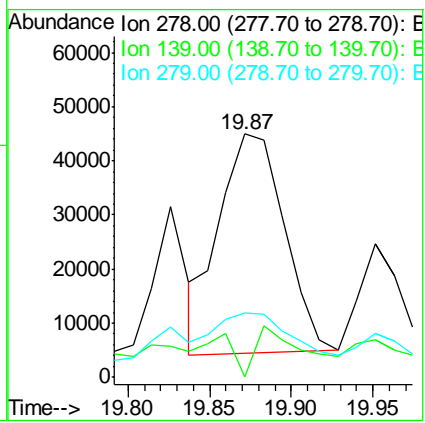




#90
 Dibenzo(a,h)anthracene
 Concen: 9.61 ng
 RT: 19.87 min Scan# 1591
 Delta R.T. 0.00 min
 Lab File: BF083645.D
 Acq: 9 Dec 2015 18:02

Instrument :
 BNA_F
 ClientSampleId :
 LS-SB17A(6-6.5)

| Tgt Ion | Resp | Lower | Upper |
|---------|--------|-------|-------|
| 278 | 111903 | | |
| 278 | 100 | | |
| 139 | 0.0 | 12.8 | 19.2# |
| 279 | 26.4 | 18.6 | 28.0 |



#91
 Benzo(g,h,i)perylene
 Concen: 37.83 ng
 RT: 20.24 min Scan# 1623
 Delta R.T. 0.01 min
 Lab File: BF083645.D
 Acq: 9 Dec 2015 18:02

| Tgt Ion | Resp | Lower | Upper |
|---------|--------|-------|-------|
| 276 | 429566 | | |
| 276 | 100 | | |
| 277 | 25.6 | 19.2 | 28.8 |
| 138 | 21.6 | 19.5 | 29.3 |

