

Data Path : Z:\HPCHEM1\BNA F\DATA\BF120915\
 Data File : BF083677.D
 Acq On : 10 Dec 2015 10:44
 Operator : UM/IZ
 Sample : G4584-08DL 5X
 Misc :
 ALS Vial : 41 Sample Multiplier: 1

Instrument :
 BNA_F
 ClientSampleId :
 SB-P3WC-15(0-8)DL

Manual Integrations
 APPROVED

MMdadoda
 12/10/2015 5:50:54 PM

Quant Time: Dec 10 11:24:29 2015
 Quant Method : Z:\HPCHEM1\BNA F\METHODS\8270-BF120815.M
 Quant Title : ASP BNA STANDARDS FOR 5 POINT CALIBRATION
 QLast Update : Wed Dec 09 00:23:35 2015
 Response via : Initial Calibration

Internal Standards	R.T.	QIon	Response	Conc	Units	Dev(Min)	
1) 1,4-Dichlorobenzene-d4	5.68	152	143938	20.00	ng	-0.02	
21) Naphthalene-d8	7.58	136	530483	20.00	ng	-0.02	
38) Acenaphthene-d10	10.36	164	244452	20.00	ng	-0.02	
63) Phenanthrene-d10	12.76	188	367950	20.00	ng	-0.02	
75) Chrysene-d12	16.98	240	306255	20.00	ng	-0.01	
86) Perylene-d12	18.61	264	273504	20.00	ng	-0.02	
System Monitoring Compounds							
5) 2-Fluorophenol	3.97	112	230656	24.31	ng	0.00	
7) Phenol-d6	5.25	99	360330	28.42	ng	-0.02	
23) Nitrobenzene-d5	6.52	82	213410	18.77	ng	-0.01	
41) 2,4,6-Tribromophenol	11.66	330	40294	18.50	ng	-0.02	
44) 2-Fluorobiphenyl	9.32	172	354619	20.42	ng	-0.02	
78) Terphenyl-d14	15.39	244	232988	17.90	ng	-0.02	
Target Compounds							
31) Naphthalene	7.64	128	8578233	305.32	ng		Qvalue # 92
37) 2-Methylnaphthalene	8.72	142	1358032	76.95	ng		98
45) 1,1'-Biphenyl	9.47	154	635201	29.90	ng		98
48) Acenaphthylene	10.13	152	640896	24.23	ng		99
49) Dimethylphthalate	10.02	163	74464	3.83	ng		98
51) Acenaphthene	10.42	154	1432657	94.60	ng		99
54) Dibenzofuran	10.72	168	149435	7.12	ng		95
57) Fluorene	11.25	166	975027	53.20	ng		99
70) Phenanthrene	12.82	178	4275057	202.22	ng		96
71) Anthracene	12.89	178	1210848	55.29	ng		99
74) Fluoranthene	14.74	202	2258935	104.45	ng		98
77) Pyrene	15.09	202	2805663	127.25	ng		97
80) Benzo(a)anthracene	16.97	228	1065120m	59.42	ng		
82) Chrysene	17.01	228	838887	46.68	ng		99
85) Indeno(1,2,3-cd)pyrene	19.86	276	396196	32.67	ng		# 100
87) Benzo(b)fluoranthene	18.24	252	861758m	55.33	ng		
88) Benzo(k)fluoranthene	18.27	252	259302m	15.11	ng		
89) Benzo(a)pyrene	18.57	252	889933m	58.56	ng		
90) Dibenzo(a,h)anthracene	19.86	278	84608m	7.28	ng		
91) Benzo(a,h,i)perylene	20.20	276	436628	38.54	ng		99

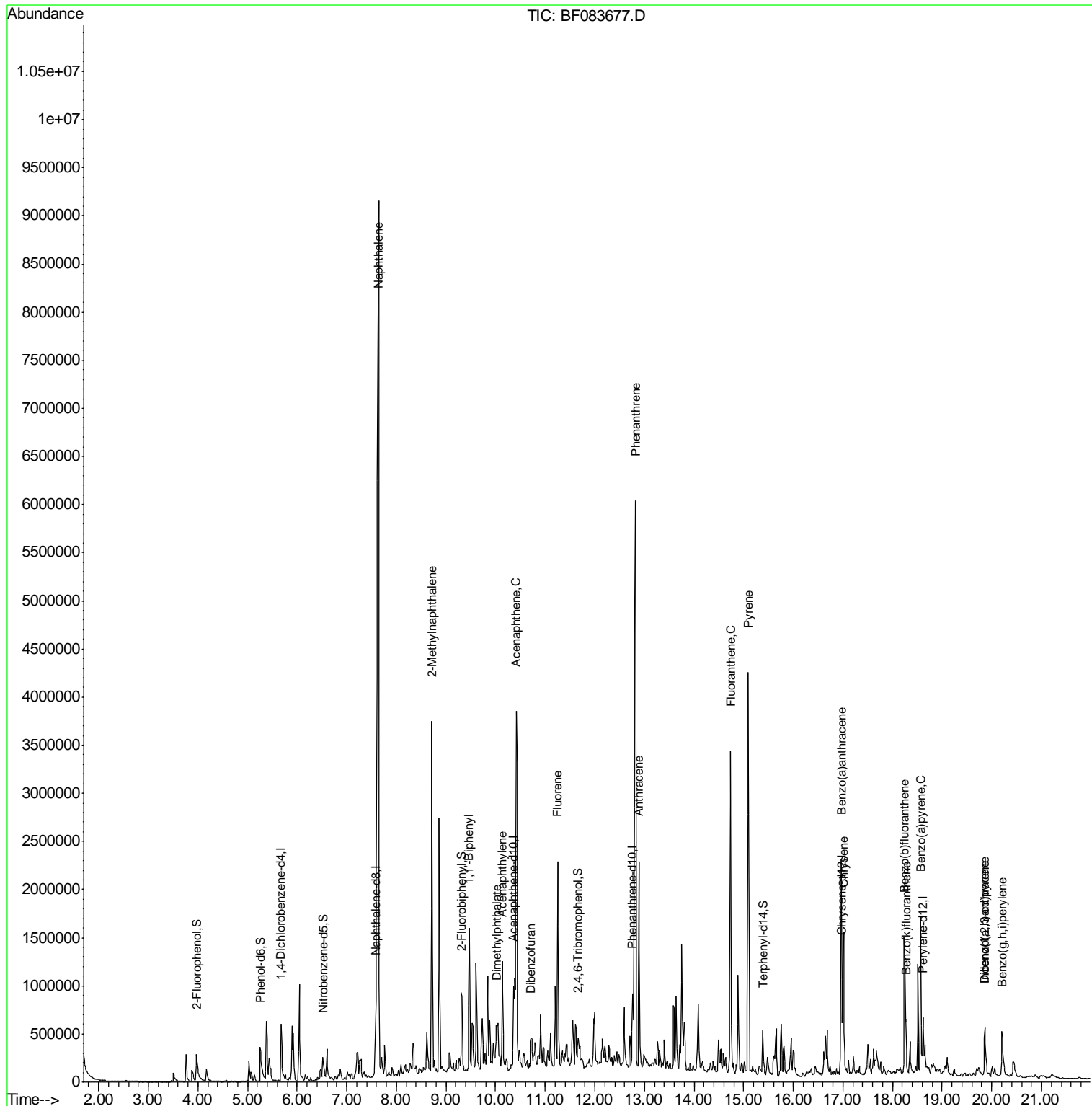
(#) = qualifier out of range (m) = manual integration (+) = signals summed

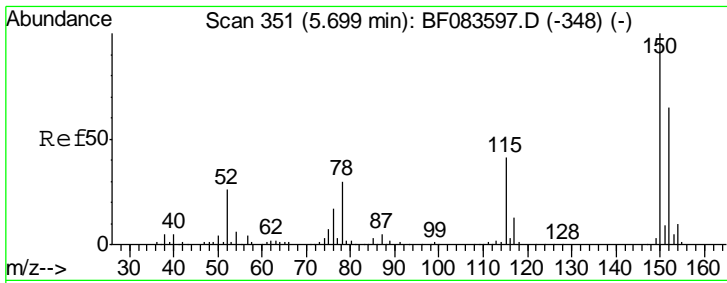
Data Path : Z:\HPCHEM1\BNA F\DATA\BF120915\
 Data File : BF083677.D
 Acq On : 10 Dec 2015 10:44
 Operator : UM/IZ
 Sample : G4584-08DL 5X
 Misc :
 ALS Vial : 41 Sample Multiplier: 1

Instrument :
 BNA_F
 Client Sampled :
 SB-P3WC-15(0-8)DL

Manual Integrations
APPROVED
 MMDadoda
 12/10/2015 5:50:54 PM

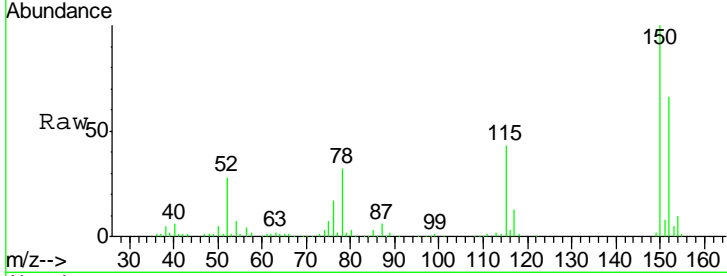
Quant Time: Dec 10 11:24:29 2015
 Quant Method : Z:\HPCHEM1\BNA F\METHODS\8270-BF120815.M
 Quant Title : ASP BNA STANDARDS FOR 5 POINT CALIBRATION
 QLast Update : Wed Dec 09 00:23:35 2015
 Response via : Initial Calibration





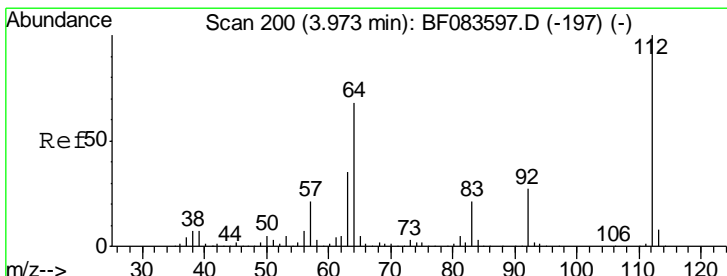
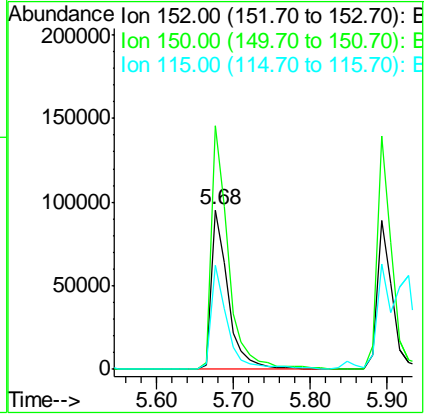
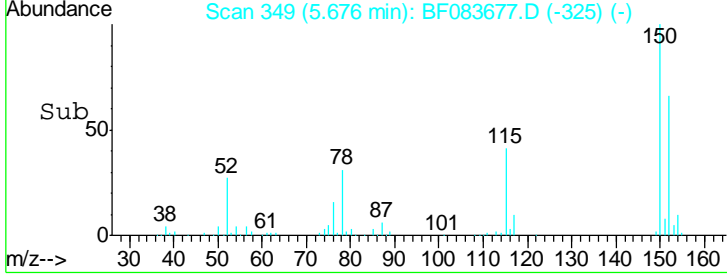
#1
 1,4-Dichlorobenzene-d4
 Concen: 20.00 ng
 RT: 5.68 min Scan# 349
 Delta R.T. -0.02 min
 Lab File: BF083677.D
 Acq: 10 Dec 2015 10:44

Instrument :
 BNA_F
ClientSampled :
 SB-P3WC-15(0-8)DL

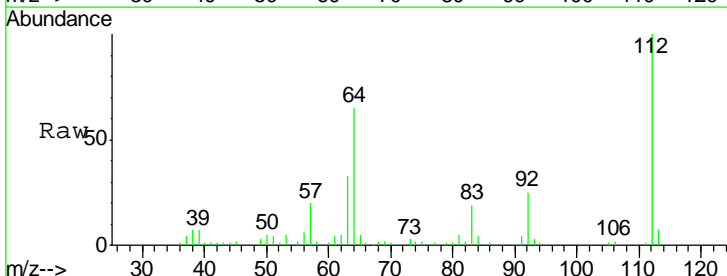


Tgt Ion	Resp	Lower	Upper
152	100		
150	152.6	126.5	189.7
115	64.9	52.3	78.5

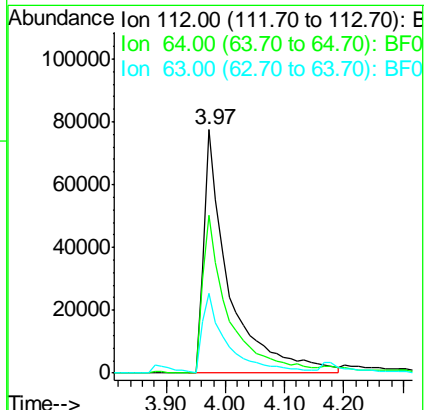
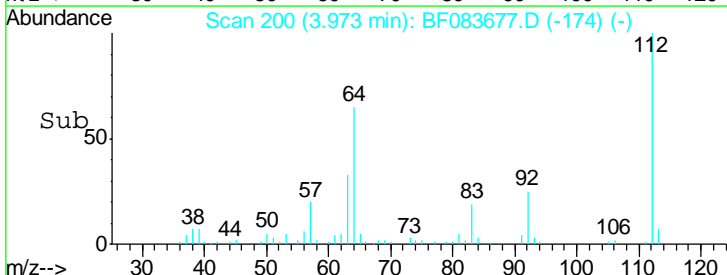
Manual Integrations
APPROVED
 MMDadoda
 12/10/2015 5:50:54 PM

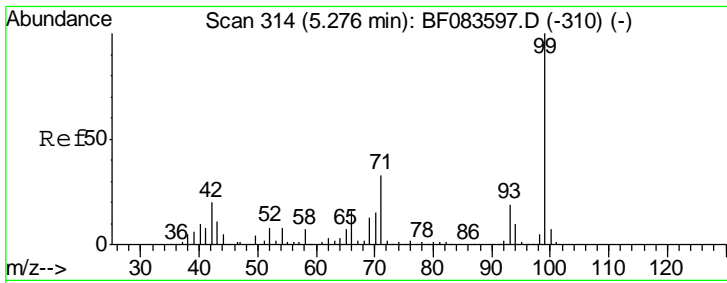


#5
 2-Fluorophenol
 Concen: 24.31 ng
 RT: 3.97 min Scan# 200
 Delta R.T. 0.00 min
 Lab File: BF083677.D
 Acq: 10 Dec 2015 10:44



Tgt Ion	Resp	Lower	Upper
112	100		
64	64.9	50.5	75.7
63	32.9	25.8	38.6



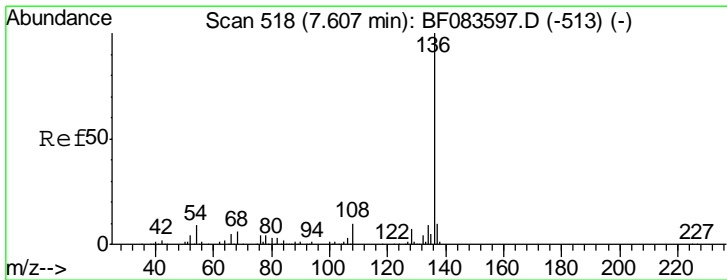
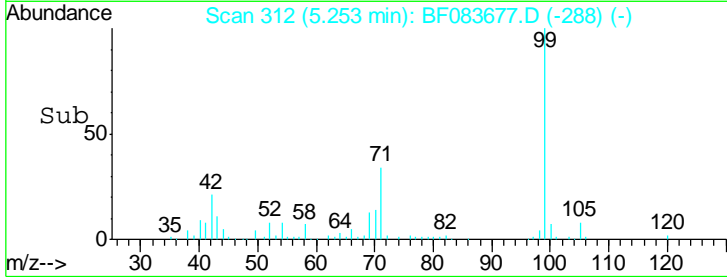
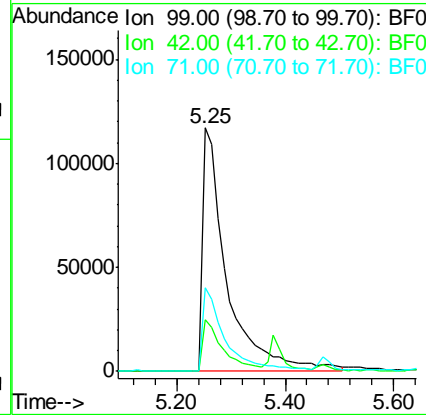
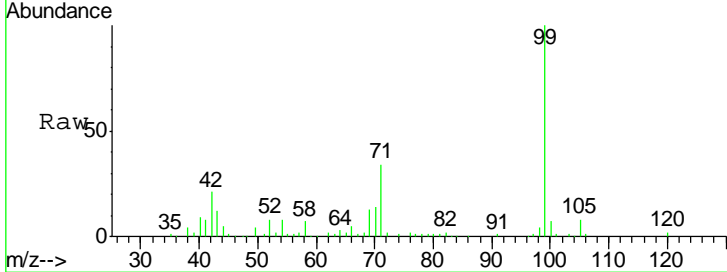


#7
 Phenol-d6
 Concen: 28.42 ng
 RT: 5.25 min Scan# 312
 Delta R.T. -0.02 min
 Lab File: BF083677.D
 Acq: 10 Dec 2015 10:44

Instrument :
 BNA_F
ClientSampled :
 SB-P3WC-15(0-8)DL

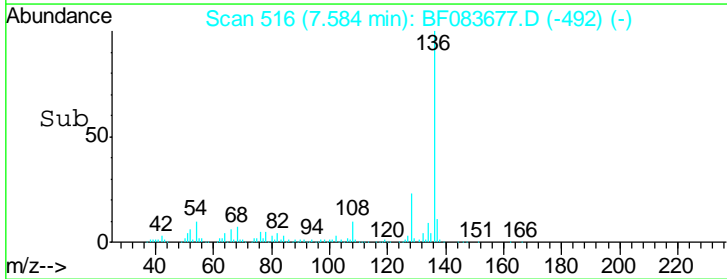
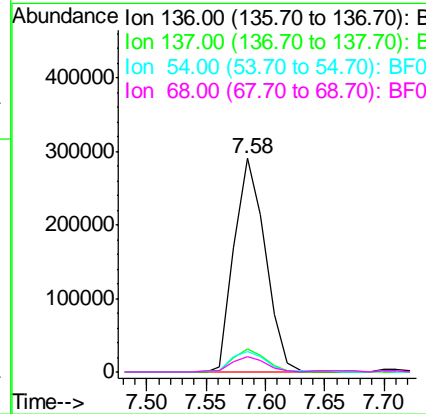
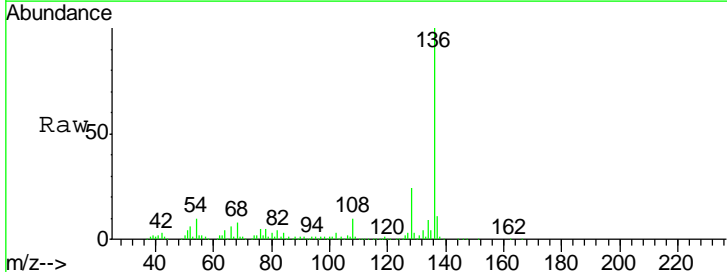
Tgt Ion	Resp	Lower	Upper
99	360330		
99	100		
42	21.4	17.3	25.9
71	34.4	26.6	40.0

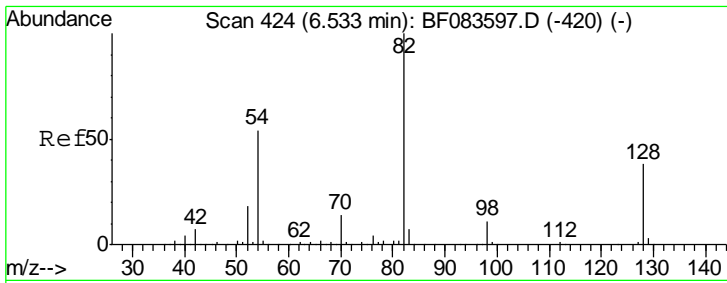
Manual Integrations
APPROVED
 MMDadoda
 12/10/2015 5:50:54 PM



#21
 Naphthalene-d8
 Concen: 20.00 ng
 RT: 7.58 min Scan# 516
 Delta R.T. -0.02 min
 Lab File: BF083677.D
 Acq: 10 Dec 2015 10:44

Tgt Ion	Resp	Lower	Upper
136	530483		
136	100		
137	10.6	8.7	13.1
54	9.6	7.8	11.6
68	7.5	5.7	8.5



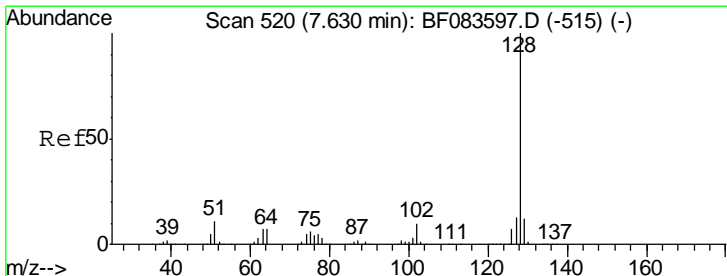
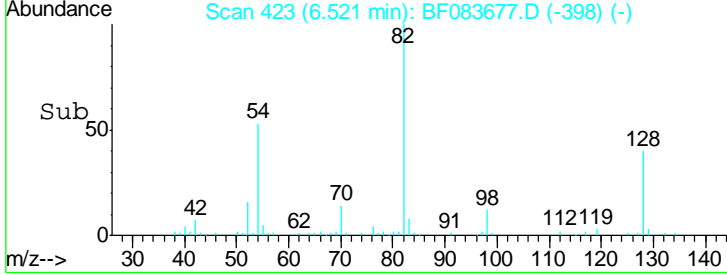
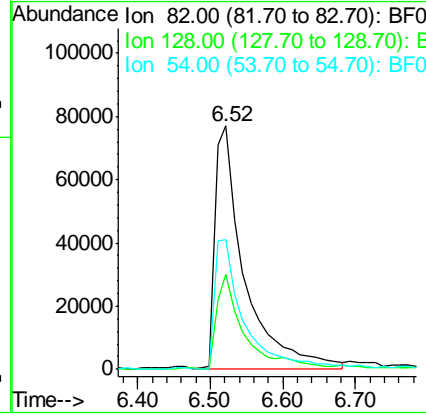
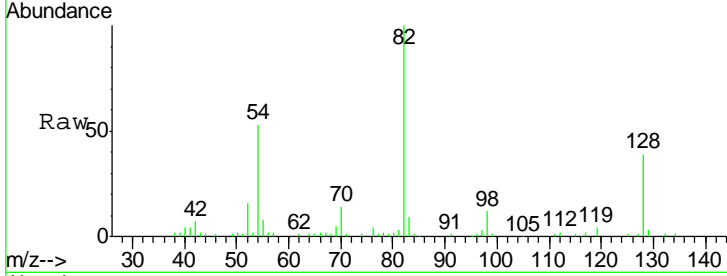


#23
 Nitrobenzene-d5
 Concen: 18.77 ng
 RT: 6.52 min Scan# 423
 Delta R.T. -0.01 min
 Lab File: BF083677.D
 Acq: 10 Dec 2015 10:44

Instrument :
 BNA_F
ClientSampled :
 SB-P3WC-15(0-8)DL

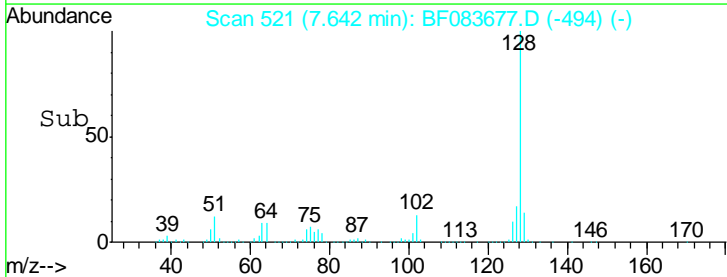
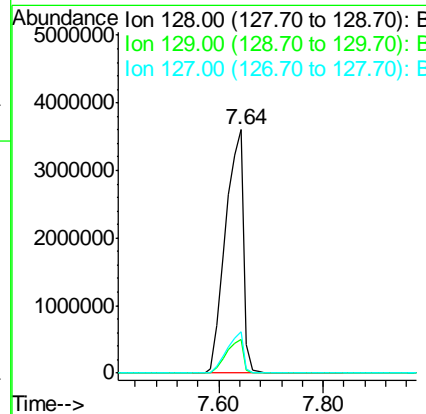
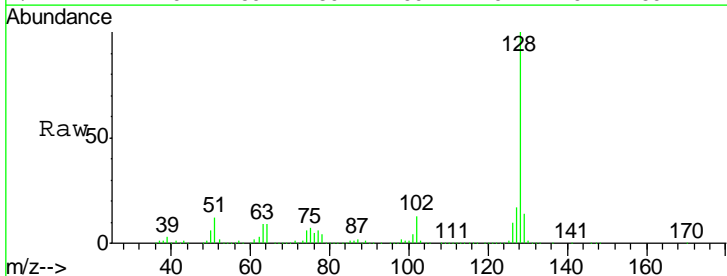
Tgt Ion	Resp	Lower	Upper
82	213410		
128	39.2	30.7	46.1
54	53.3	42.5	63.7

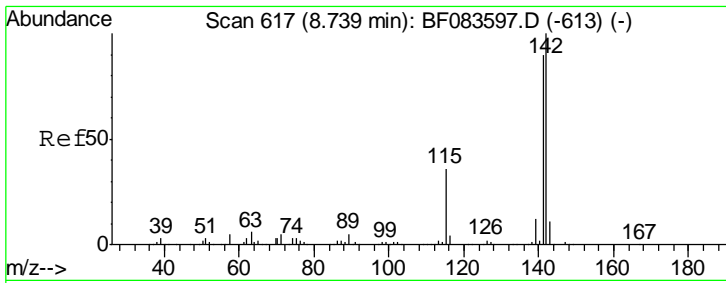
Manual Integrations
APPROVED
 MMDadoda
 12/10/2015 5:50:54 PM



#31
 Naphthalene
 Concen: 305.32 ng
 RT: 7.64 min Scan# 521
 Delta R.T. 0.01 min
 Lab File: BF083677.D
 Acq: 10 Dec 2015 10:44

Tgt Ion	Resp	Lower	Upper
128	8578233		
129	13.8	8.6	13.0#
127	16.7	10.6	16.0#



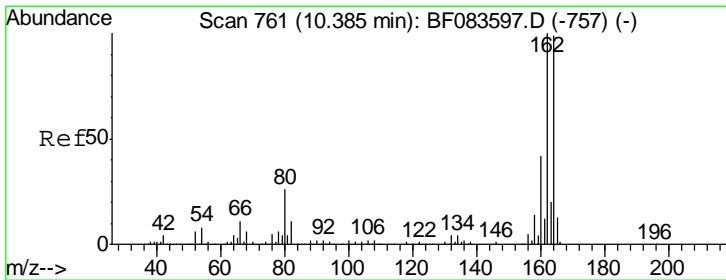
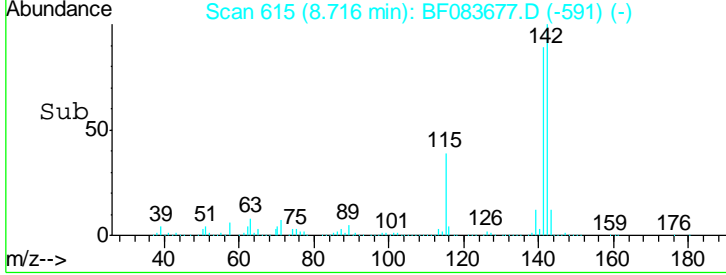
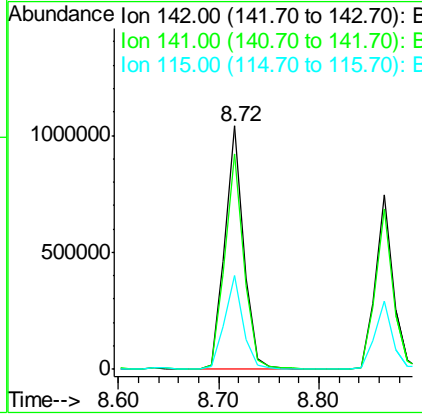
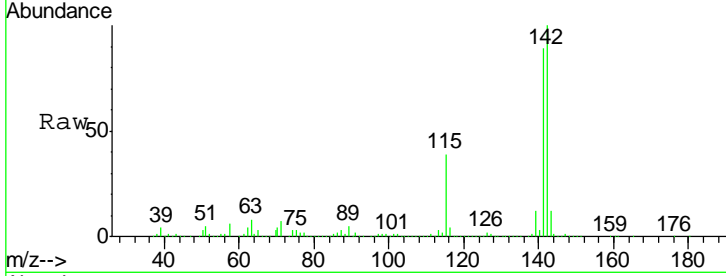


#37
 2-Methylnaphthalene
 Concen: 76.95 ng
 RT: 8.72 min Scan# 615
 Delta R.T. -0.02 min
 Lab File: BF083677.D
 Acq: 10 Dec 2015 10:44

Instrument :
 BNA_F
ClientSampleId :
 SB-P3WC-15(0-8)DL

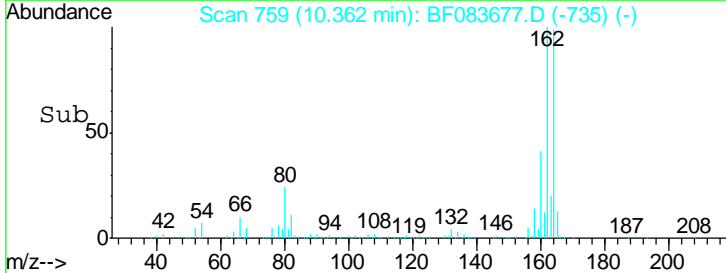
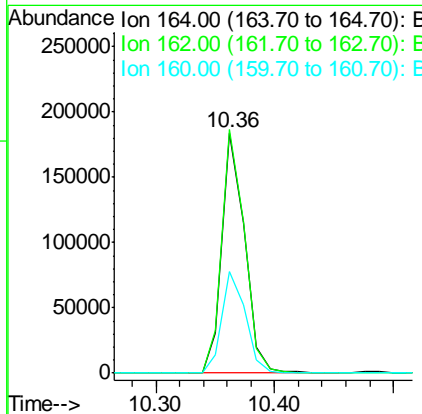
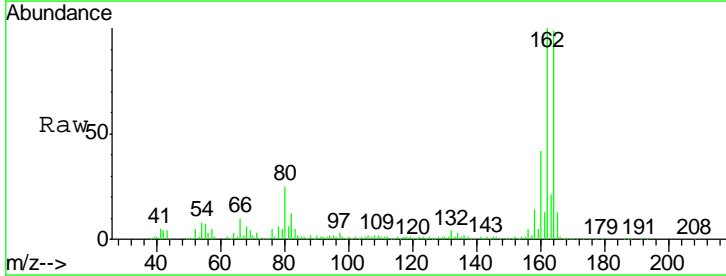
Tgt Ion	Resp	Lower	Upper
142	100		
141	88.6	70.3	105.5
115	38.8	29.2	43.8

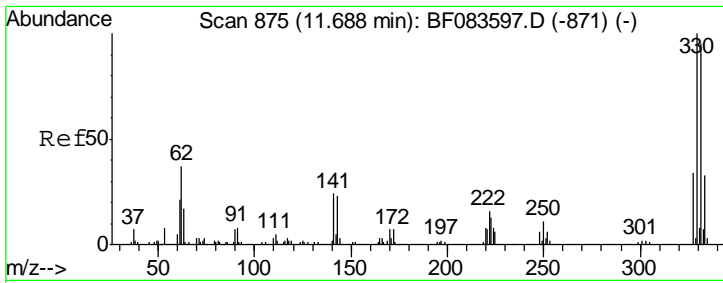
Manual Integrations
APPROVED
 MMDadoda
 12/10/2015 5:50:54 PM



#38
 Acenaphthene-d10
 Concen: 20.00 ng
 RT: 10.36 min Scan# 759
 Delta R.T. -0.02 min
 Lab File: BF083677.D
 Acq: 10 Dec 2015 10:44

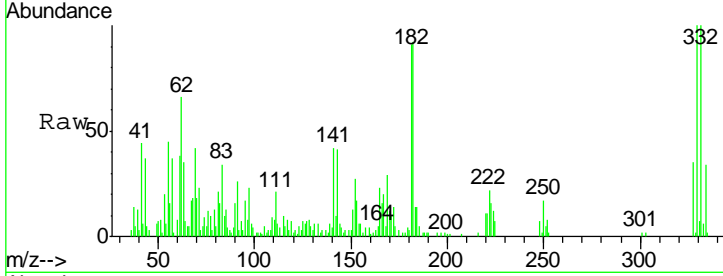
Tgt Ion	Resp	Lower	Upper
164	100		
162	101.4	78.8	118.2
160	42.3	33.4	50.2





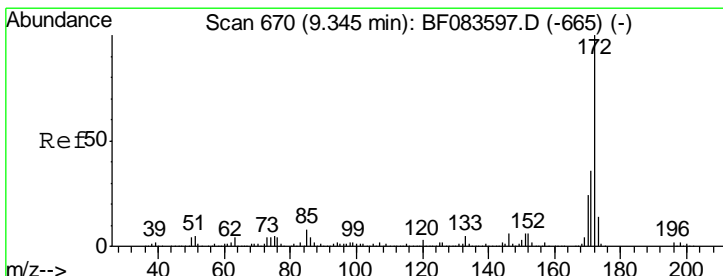
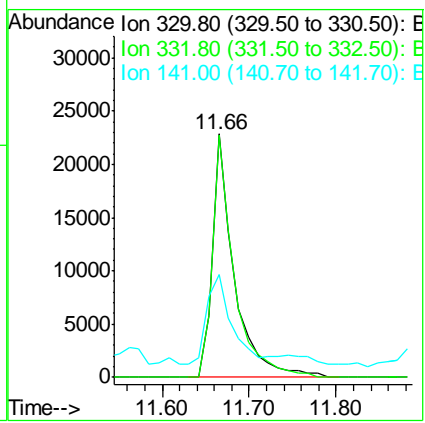
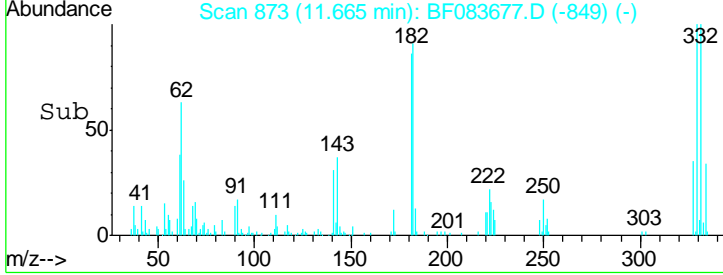
#41
 2,4,6-Tribromophenol
 Concen: 18.50 ng
 RT: 11.66 min Scan# 873
 Delta R.T. -0.02 min
 Lab File: BF083677.D
 Acq: 10 Dec 2015 10:44

Instrument :
 BNA_F
ClientSampleId :
 SB-P3WC-15(0-8)DL

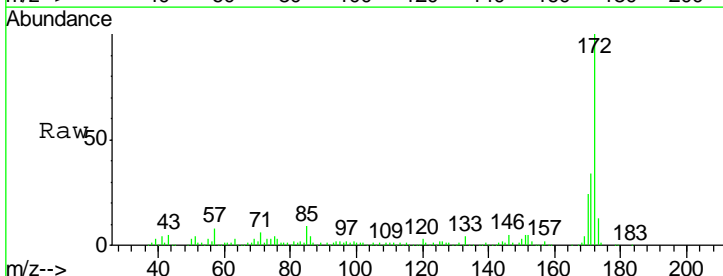


Tgt Ion	Resp	Lower	Upper
330	100		
332	98.6	0.0	0.0#
141	42.7	0.0	0.0#

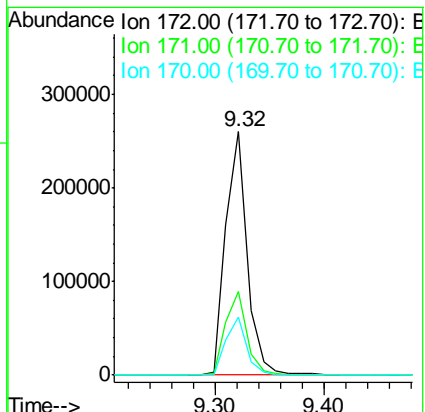
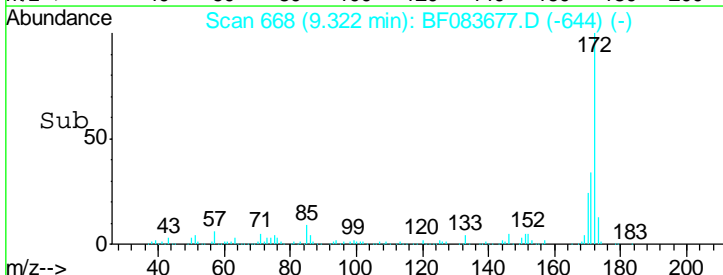
Manual Integrations
APPROVED
 MMdadoda
 12/10/2015 5:50:54 PM

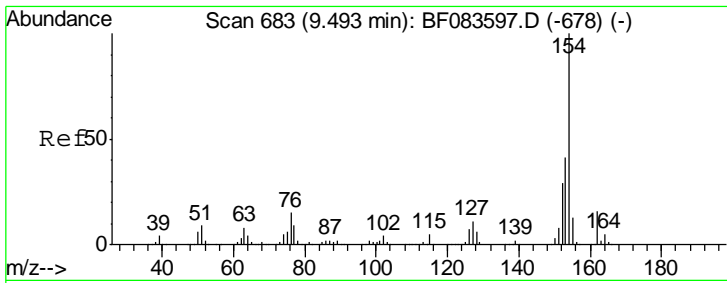


#44
 2-Fluorobiphenyl
 Concen: 20.42 ng
 RT: 9.32 min Scan# 668
 Delta R.T. -0.02 min
 Lab File: BF083677.D
 Acq: 10 Dec 2015 10:44



Tgt Ion	Resp	Lower	Upper
172	100		
171	34.4	28.6	42.8
170	23.8	19.4	29.0



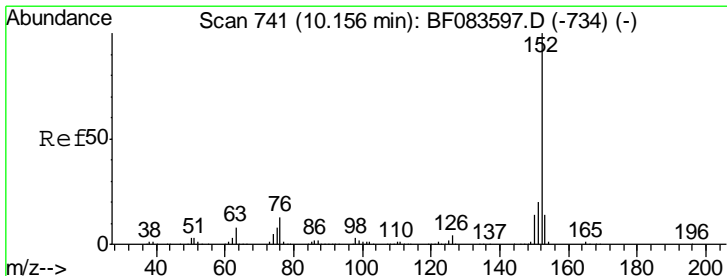
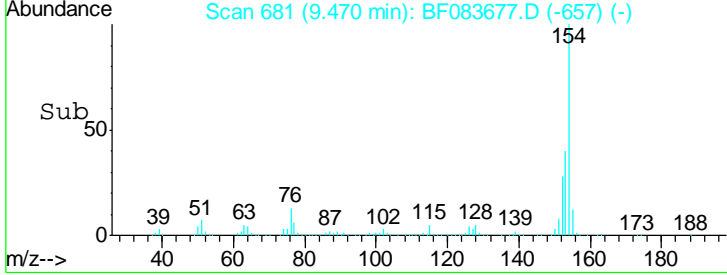
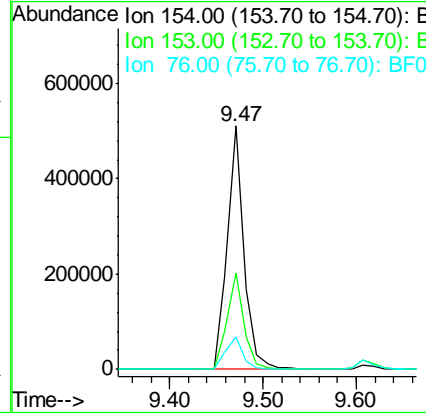
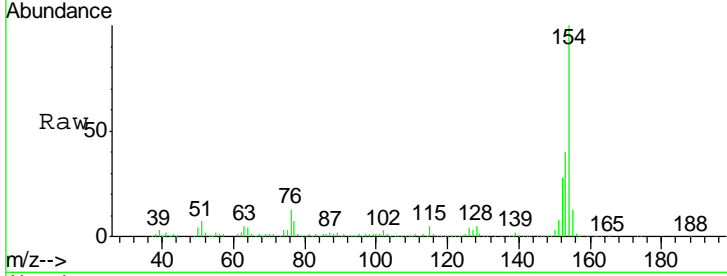


#45
 1,1'-Biphenyl
 Concen: 29.90 ng
 RT: 9.47 min Scan# 681
 Delta R.T. -0.02 min
 Lab File: BF083677.D
 Acq: 10 Dec 2015 10:44

Instrument :
 BNA_F
ClientSampled :
 SB-P3WC-15(0-8)DL

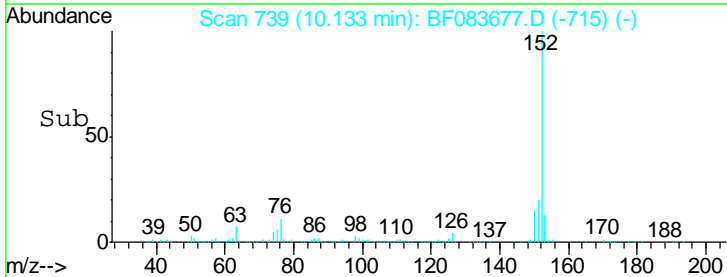
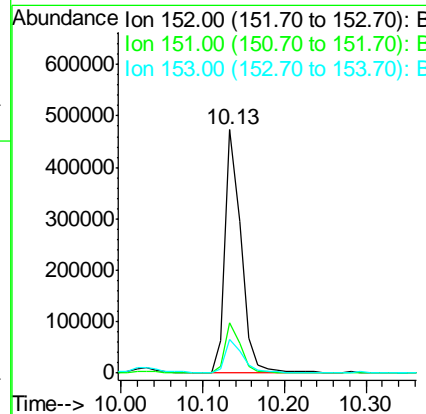
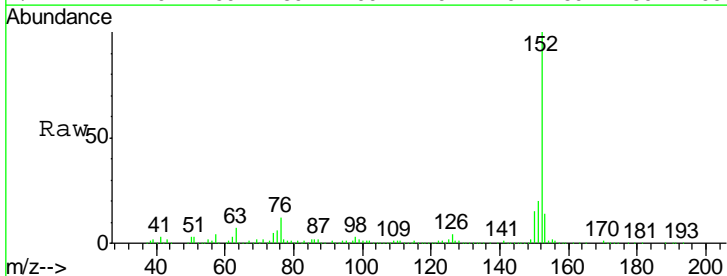
Tgt Ion	Resp	Lower	Upper
154	100		
153	39.5	20.2	60.2
76	13.2	0.0	34.8

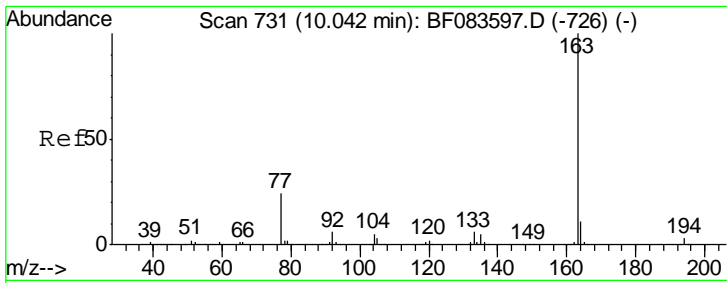
Manual Integrations
APPROVED
 MMDadoda
 12/10/2015 5:50:54 PM



#48
 Acenaphthylene
 Concen: 24.23 ng
 RT: 10.13 min Scan# 739
 Delta R.T. -0.02 min
 Lab File: BF083677.D
 Acq: 10 Dec 2015 10:44

Tgt Ion	Resp	Lower	Upper
152	100		
151	20.4	16.3	24.5
153	14.0	10.8	16.2



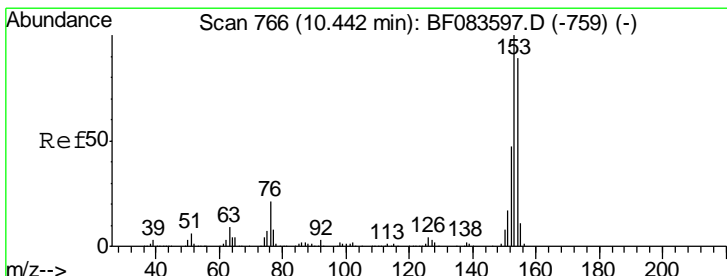
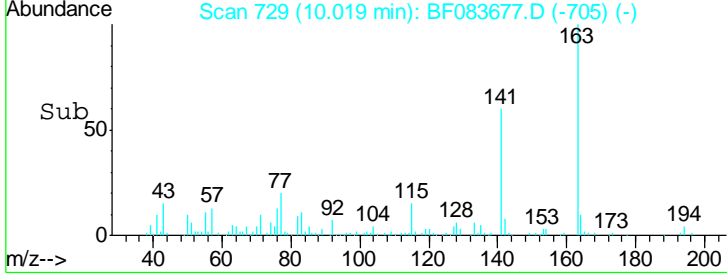
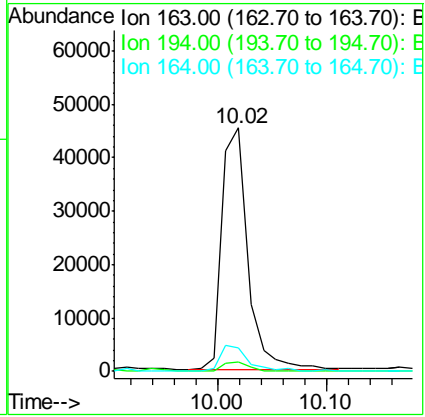
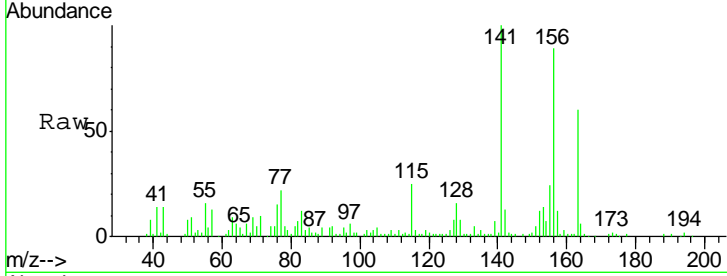


#49
 Dimethylphthalate
 Concen: 3.83 ng
 RT: 10.02 min Scan# 729
 Delta R.T. -0.02 min
 Lab File: BF083677.D
 Acq: 10 Dec 2015 10:44

Instrument :
 BNA_F
ClientSampled :
 SB-P3WC-15(0-8)DL

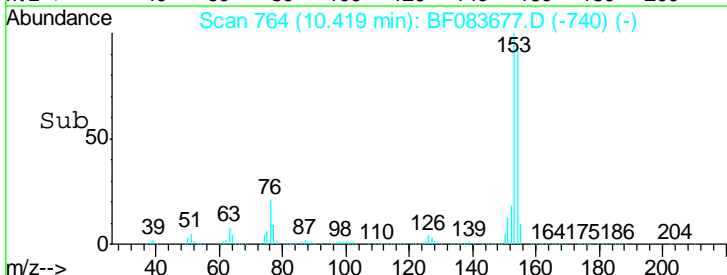
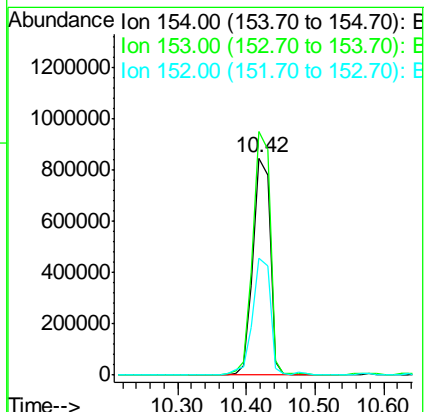
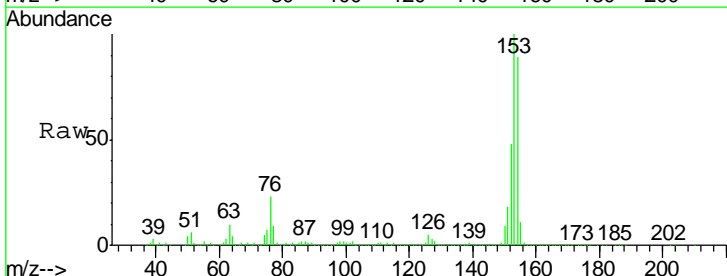
Tgt Ion	Resp	Lower	Upper
163	100		
194	3.7	2.8	4.2
164	9.7	8.6	13.0

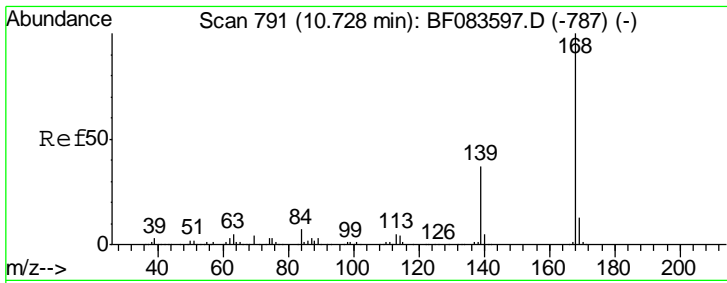
Manual Integrations
APPROVED
 MMDadoda
 12/10/2015 5:50:54 PM



#51
 Acenaphthene
 Concen: 94.60 ng
 RT: 10.42 min Scan# 764
 Delta R.T. -0.02 min
 Lab File: BF083677.D
 Acq: 10 Dec 2015 10:44

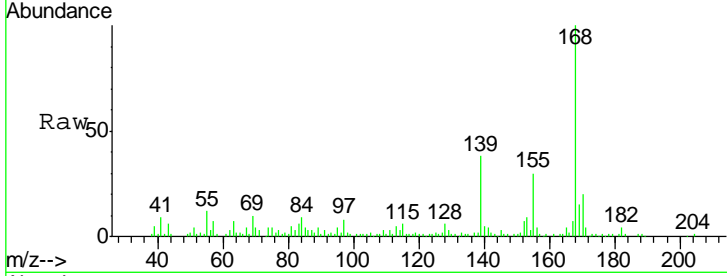
Tgt Ion	Resp	Lower	Upper
154	100		
153	112.3	91.4	137.0
152	54.1	43.4	65.2





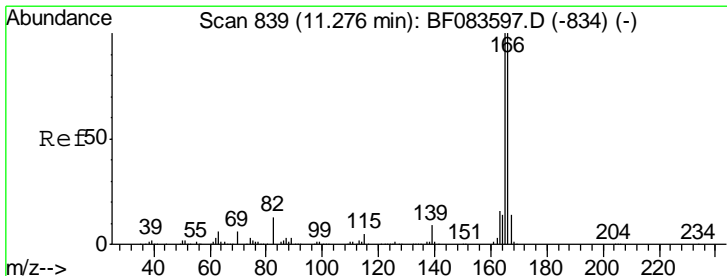
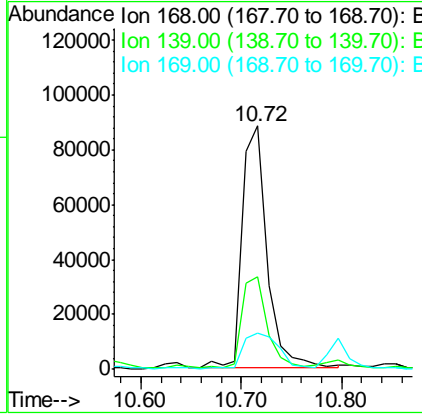
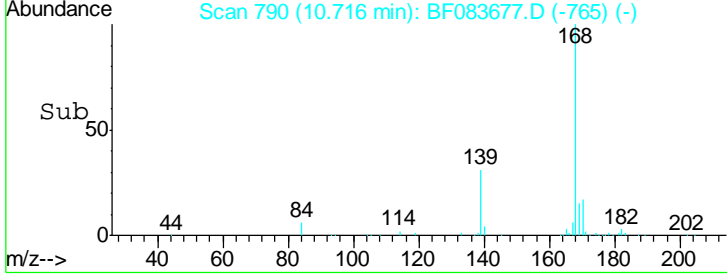
#54
 Dibenzofuran
 Concen: 7.12 ng
 RT: 10.72 min Scan# 790
 Delta R.T. -0.01 min
 Lab File: BF083677.D
 Acq: 10 Dec 2015 10:44

Instrument :
 BNA_F
 ClientSampleId :
 SB-P3WC-15(0-8)DL



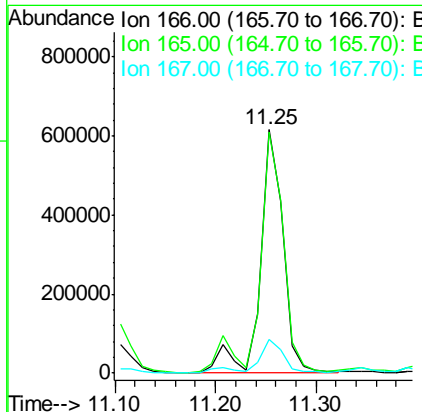
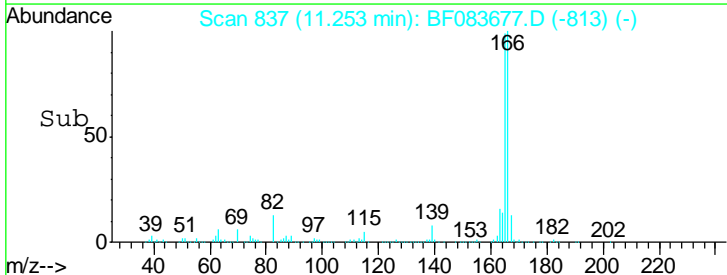
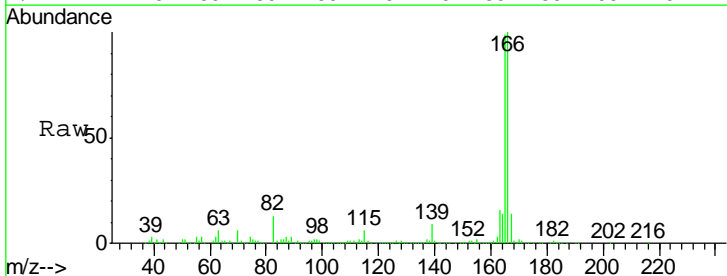
Tgt Ion	Resp	Lower	Upper
168	149435		
139	37.9	28.0	42.0
169	14.9	10.8	16.2

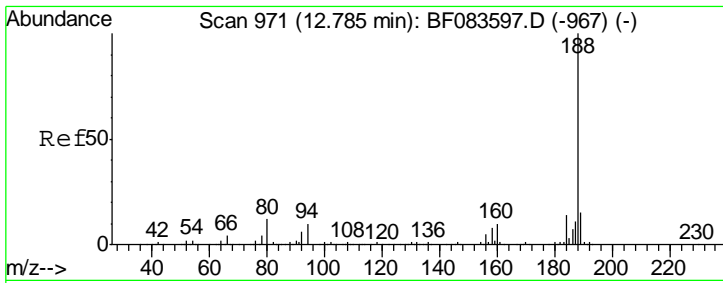
Manual Integrations
 APPROVED
 MMDadoda
 12/10/2015 5:50:54 PM



#57
 Fluorene
 Concen: 53.20 ng
 RT: 11.25 min Scan# 837
 Delta R.T. -0.02 min
 Lab File: BF083677.D
 Acq: 10 Dec 2015 10:44

Tgt Ion	Resp	Lower	Upper
166	975027		
165	98.8	80.0	120.0
167	13.6	10.6	16.0



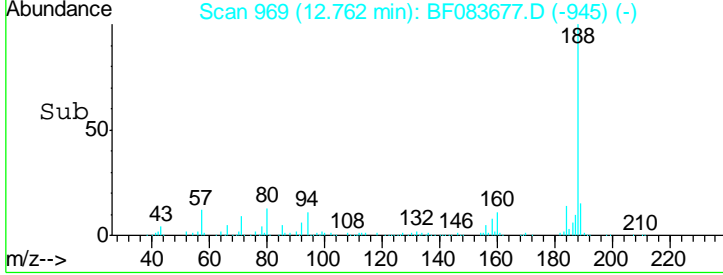
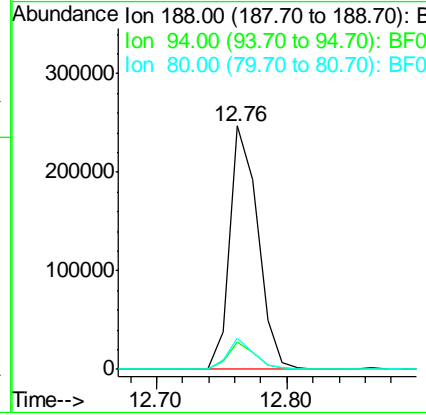
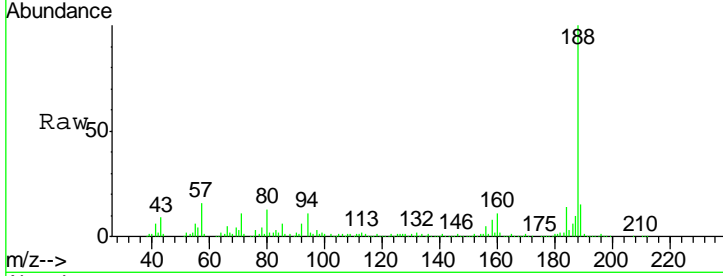


#63
 Phenanthrene-d10
 Concen: 20.00 ng
 RT: 12.76 min Scan# 969
 Delta R.T. -0.02 min
 Lab File: BF083677.D
 Acq: 10 Dec 2015 10:44

Instrument :
 BNA_F
ClientSampled :
 SB-P3WC-15(0-8)DL

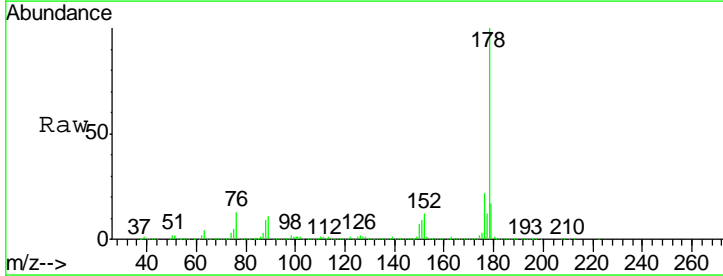
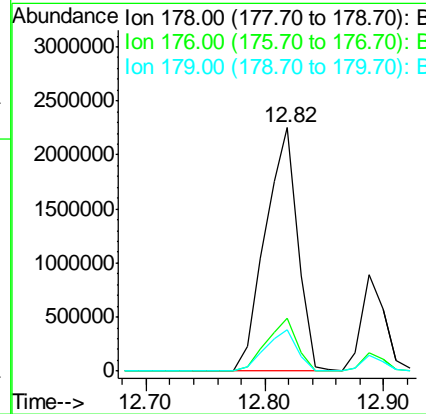
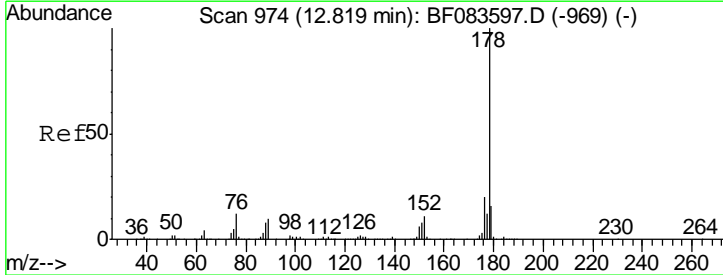
Tgt Ion	Resp	Lower	Upper
188	100		
94	11.4	9.4	14.2
80	12.8	10.6	16.0

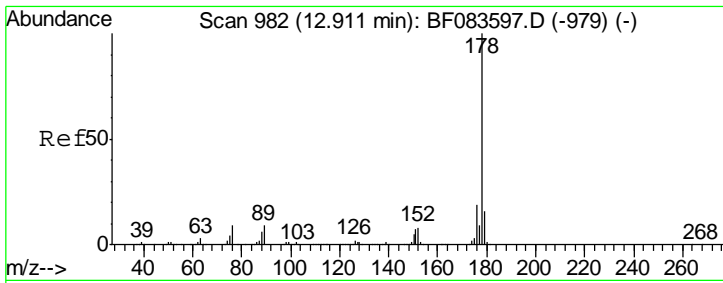
Manual Integrations
APPROVED
 MMDadoda
 12/10/2015 5:50:54 PM



#70
 Phenanthrene
 Concen: 202.22 ng
 RT: 12.82 min Scan# 974
 Delta R.T. 0.00 min
 Lab File: BF083677.D
 Acq: 10 Dec 2015 10:44

Tgt Ion	Resp	Lower	Upper
178	100		
176	21.6	15.7	23.5
179	17.0	12.2	18.4



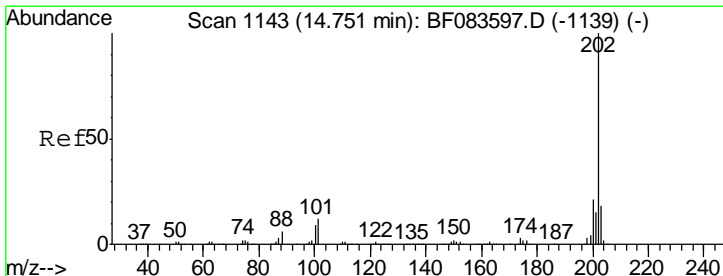
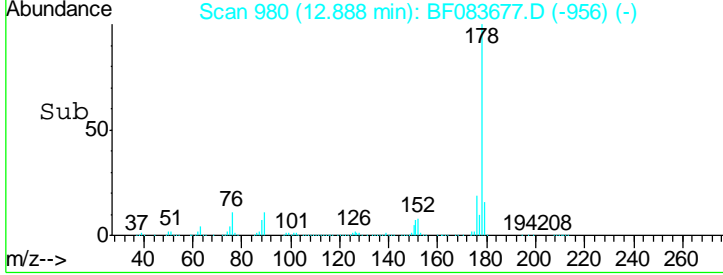
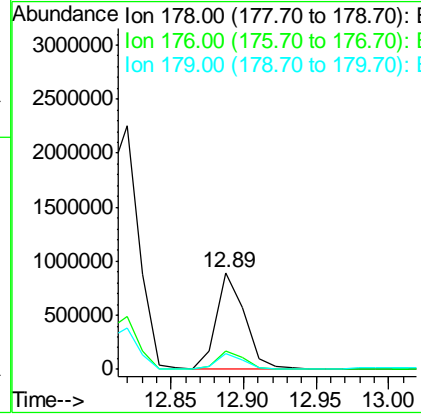
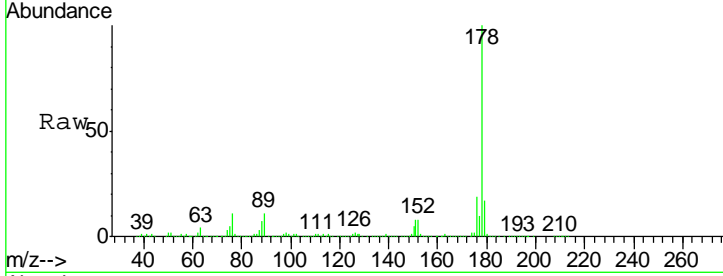


#71
 Anthracene
 Concen: 55.29 ng
 RT: 12.89 min Scan# 980
 Delta R.T. -0.02 min
 Lab File: BF083677.D
 Acq: 10 Dec 2015 10:44

Instrument :
 BNA_F
ClientSampled :
 SB-P3WC-15(0-8)DL

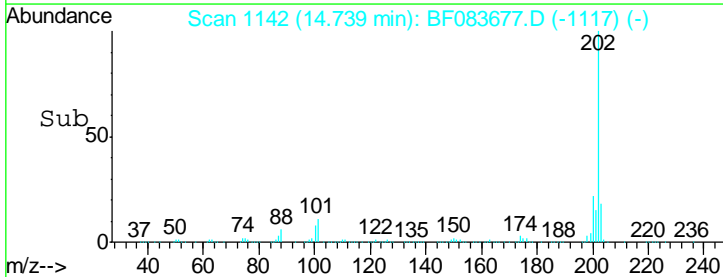
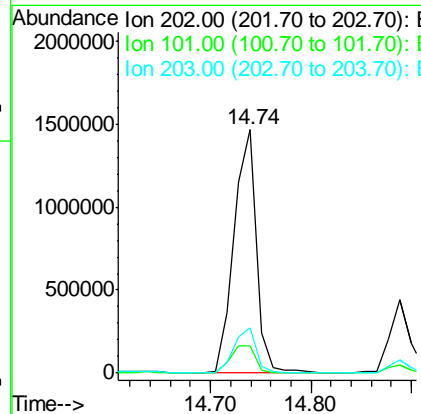
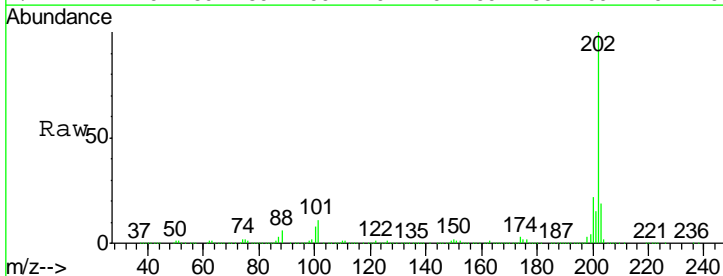
Tgt Ion	Resp	Lower	Upper
178	100		
176	18.9	15.2	22.8
179	16.6	12.6	18.8

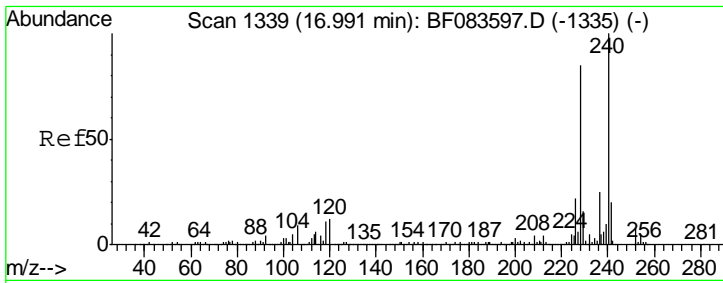
Manual Integrations
APPROVED
 MMDadoda
 12/10/2015 5:50:54 PM



#74
 Fluoranthene
 Concen: 104.45 ng
 RT: 14.74 min Scan# 1142
 Delta R.T. -0.01 min
 Lab File: BF083677.D
 Acq: 10 Dec 2015 10:44

Tgt Ion	Resp	Lower	Upper
202	100		
101	11.1	0.0	31.5
203	18.6	0.0	37.6



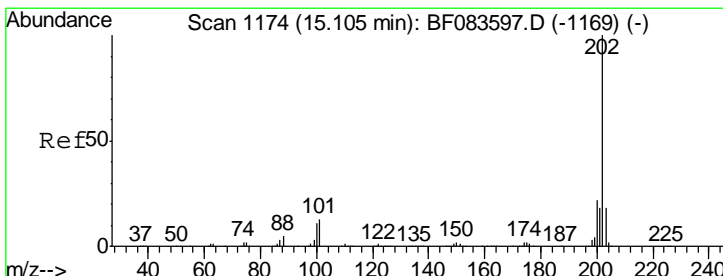
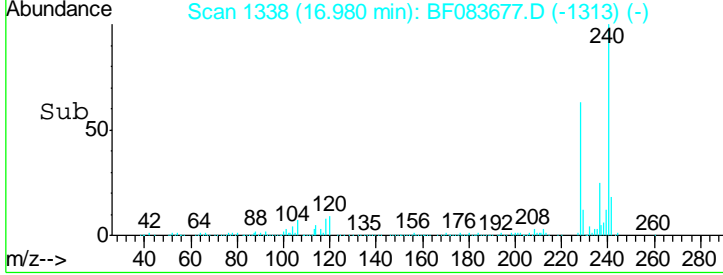
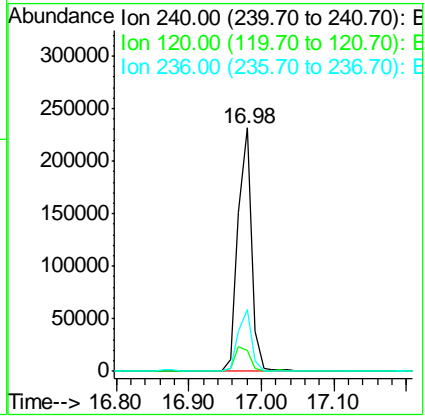
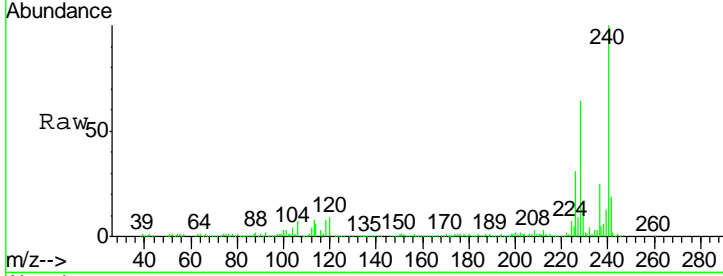


#75
 Chrysene-d12
 Concen: 20.00 ng
 RT: 16.98 min Scan# 1338
 Delta R.T. -0.01 min
 Lab File: BF083677.D
 Acq: 10 Dec 2015 10:44

Instrument :
 BNA_F
ClientSampled :
 SB-P3WC-15(0-8)DL

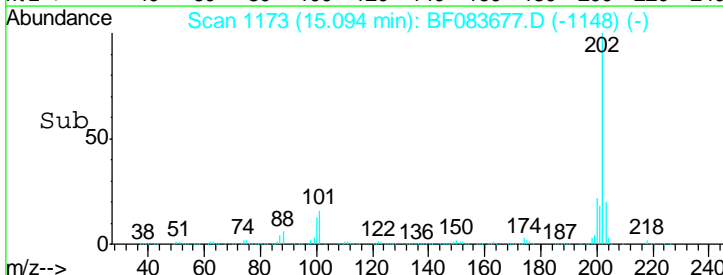
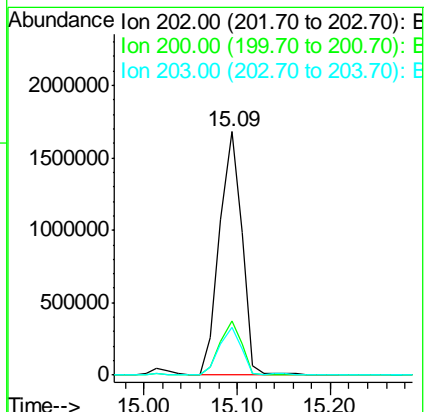
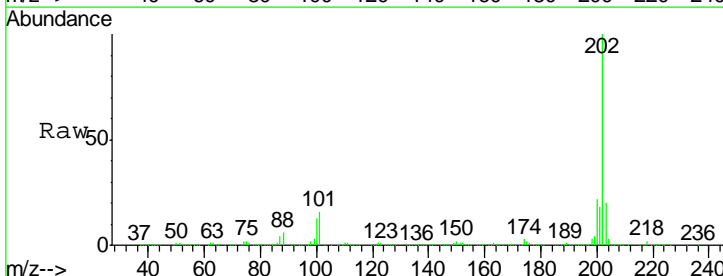
Tgt Ion	Resp	Lower	Upper
240	100		
120	8.8	8.1	12.1
236	25.3	20.8	31.2

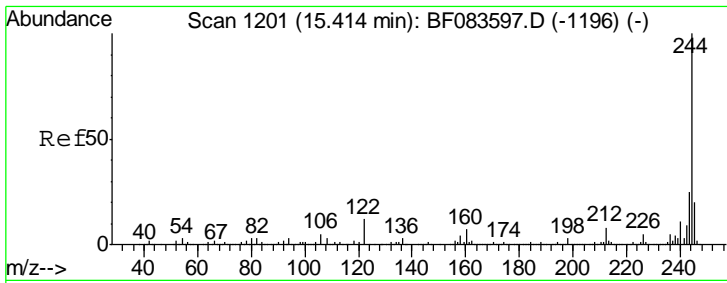
Manual Integrations
APPROVED
 MMDadoda
 12/10/2015 5:50:54 PM



#77
 Pyrene
 Concen: 127.25 ng
 RT: 15.09 min Scan# 1173
 Delta R.T. -0.01 min
 Lab File: BF083677.D
 Acq: 10 Dec 2015 10:44

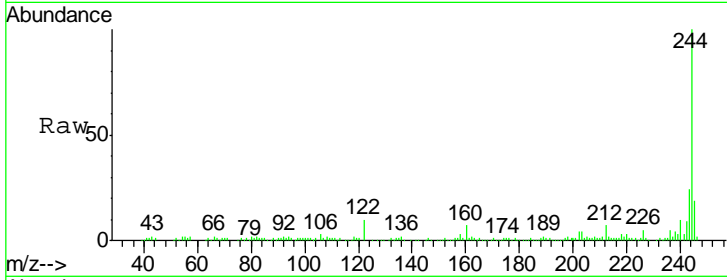
Tgt Ion	Resp	Lower	Upper
202	100		
200	22.2	16.7	25.1
203	19.7	14.3	21.5





#78
 Terphenyl-d14
 Concen: 17.90 ng
 RT: 15.39 min Scan# 1199
 Delta R.T. -0.02 min
 Lab File: BF083677.D
 Acq: 10 Dec 2015 10:44

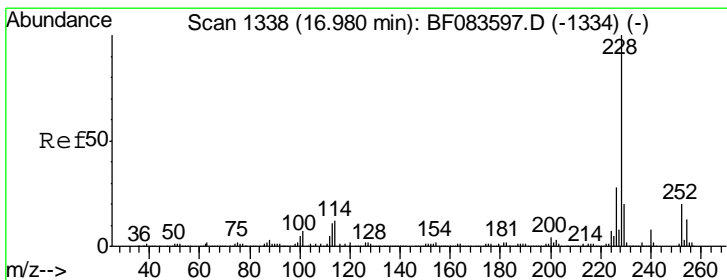
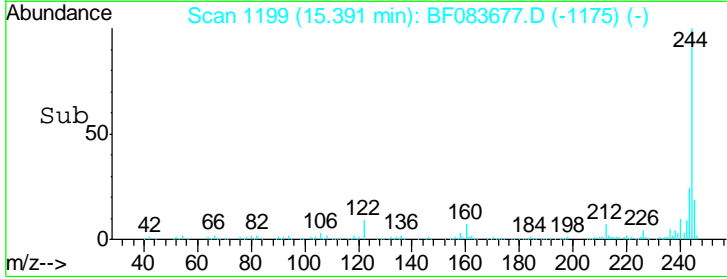
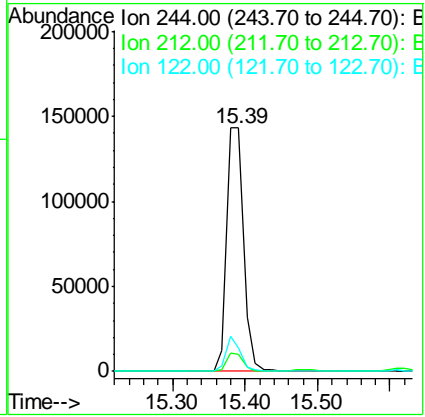
Instrument :
 BNA_F
ClientSampled :
 SB-P3WC-15(0-8)DL



Tgt Ion: 244 Resp: 232988

Ion	Ratio	Lower	Upper
244	100		
212	7.1	6.1	9.1
122	9.7	11.0	16.6#

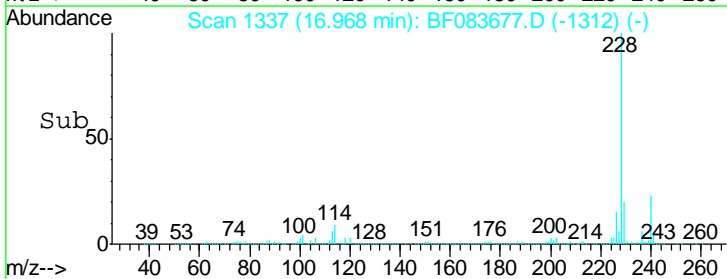
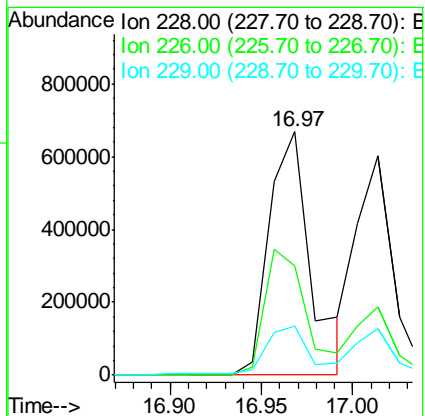
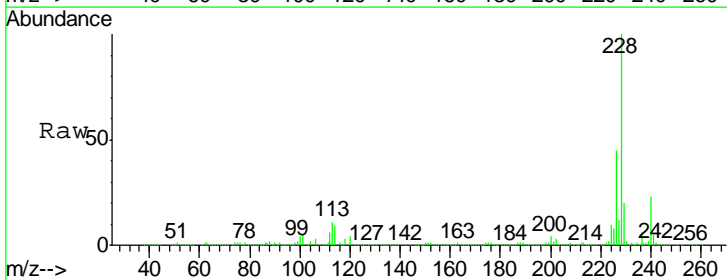
Manual Integrations
APPROVED
 MMDadoda
 12/10/2015 5:50:54 PM

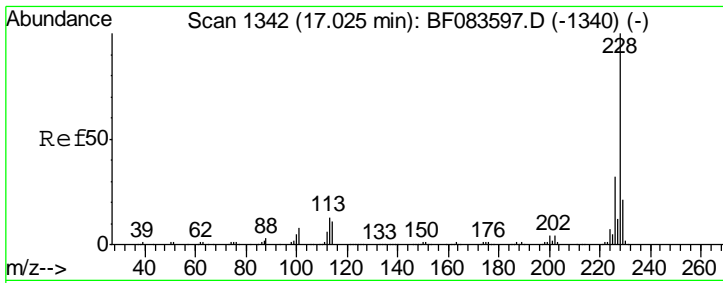


#80
 Benzo(a)anthracene
 Concen: 59.42 ng m
 RT: 16.97 min Scan# 1337
 Delta R.T. -0.01 min
 Lab File: BF083677.D
 Acq: 10 Dec 2015 10:44

Tgt Ion: 228 Resp: 1065120

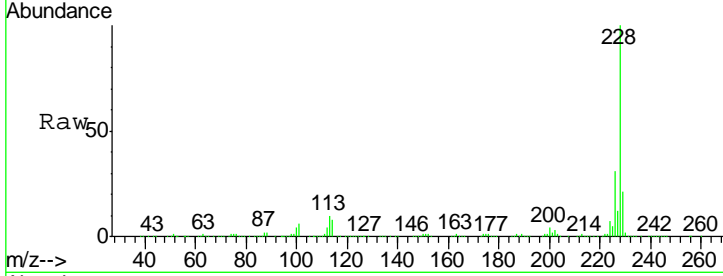
Ion	Ratio	Lower	Upper
228	100		
226	45.0	22.3	33.5#
229	20.3	15.7	23.5





#82
 Chrysene
 Concen: 46.68 ng
 RT: 17.01 min Scan# 1341
 Delta R.T. -0.01 min
 Lab File: BF083677.D
 Acq: 10 Dec 2015 10:44

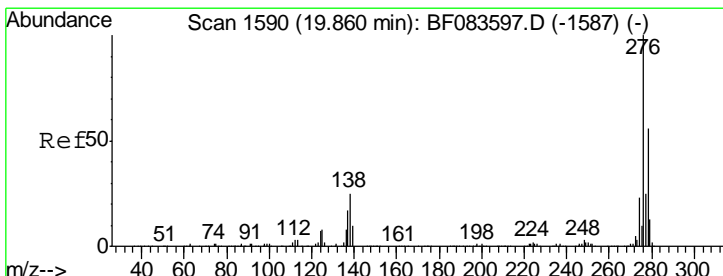
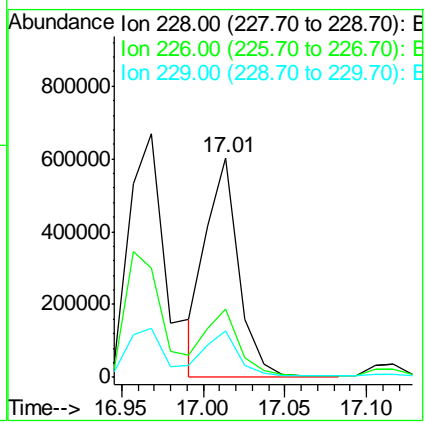
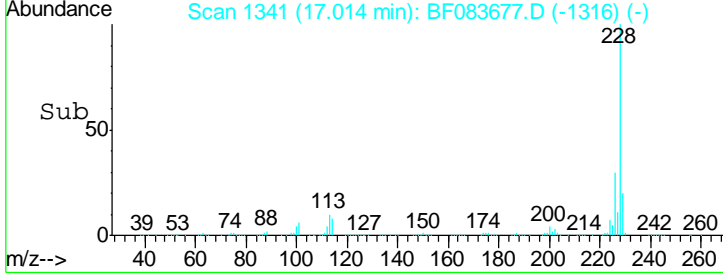
Instrument :
 BNA_F
ClientSampled :
 SB-P3WC-15(0-8)DL



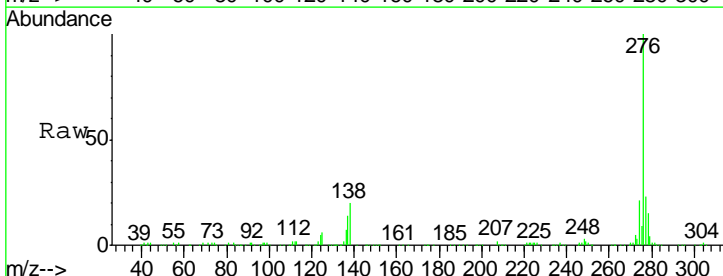
Tgt Ion: 228 Resp: 838887

Ion	Ratio	Lower	Upper
228	100		
226	31.3	24.7	37.1
229	20.9	16.3	24.5

Manual Integrations
APPROVED
 MMDadoda
 12/10/2015 5:50:54 PM

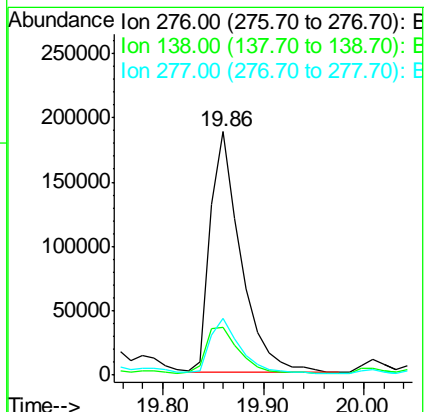
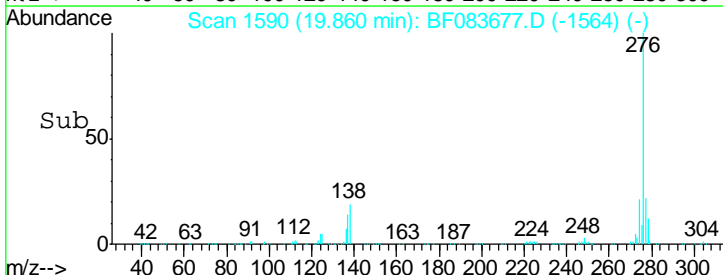


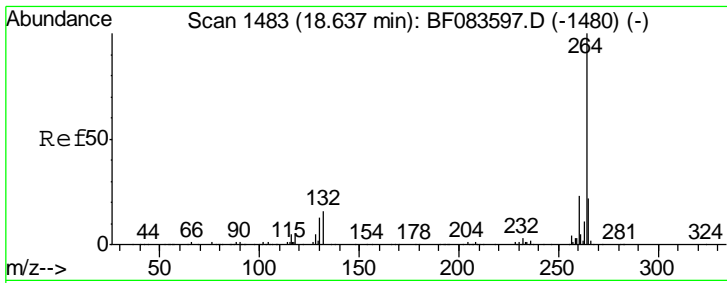
#85
 Indeno(1,2,3-cd)pyrene
 Concen: 32.67 ng
 RT: 19.86 min Scan# 1590
 Delta R.T. 0.00 min
 Lab File: BF083677.D
 Acq: 10 Dec 2015 10:44



Tgt Ion: 276 Resp: 396196

Ion	Ratio	Lower	Upper
276	100		
138	22.1	0.0	0.0#
277	23.5	0.0	0.0#



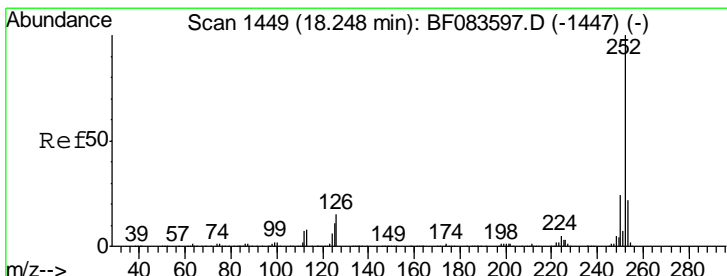
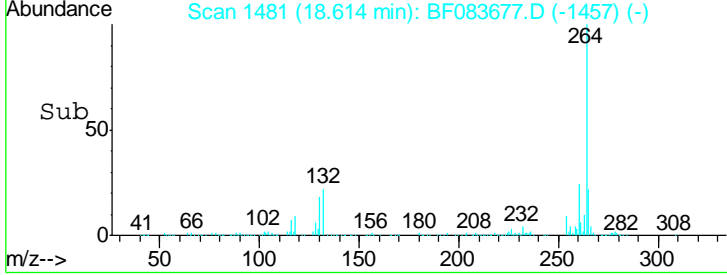
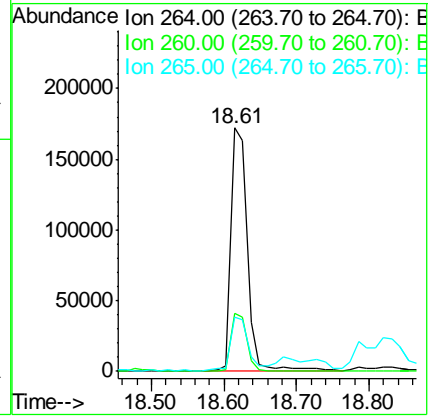
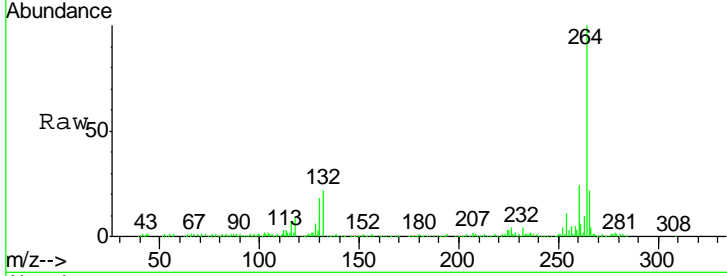


#86
 Perylene-d12
 Concen: 20.00 ng
 RT: 18.61 min Scan# 1481
 Delta R.T. -0.02 min
 Lab File: BF083677.D
 Acq: 10 Dec 2015 10:44

Instrument :
 BNA_F
ClientSampled :
 SB-P3WC-15(0-8)DL

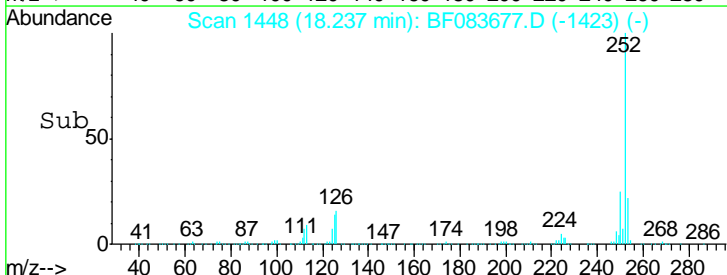
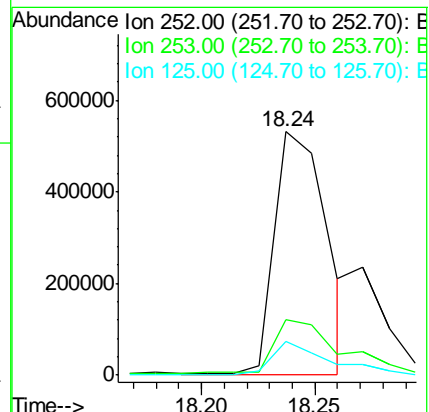
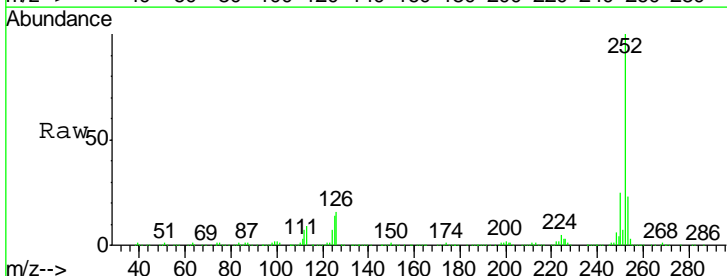
Tgt Ion	Resp	Lower	Upper
264	100		
260	24.0	19.4	29.0
265	22.2	17.8	26.6

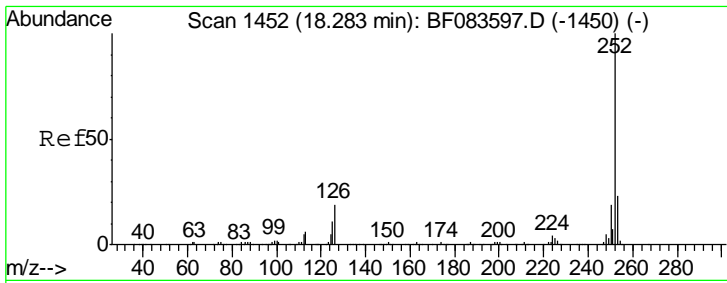
Manual Integrations
APPROVED
 MMDadoda
 12/10/2015 5:50:54 PM



#87
 Benzo(b)fluoranthene
 Concen: 55.33 ng m
 RT: 18.24 min Scan# 1448
 Delta R.T. -0.01 min
 Lab File: BF083677.D
 Acq: 10 Dec 2015 10:44

Tgt Ion	Resp	Lower	Upper
252	100		
253	22.6	18.2	27.4
125	13.8	8.2	12.4#



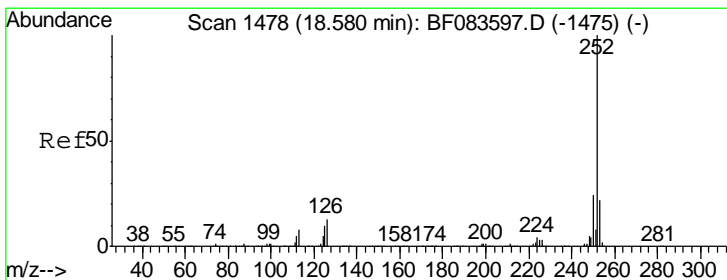
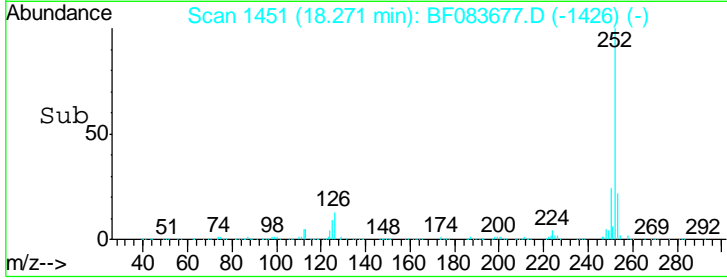
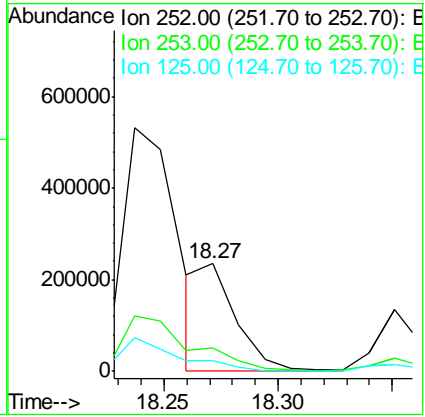
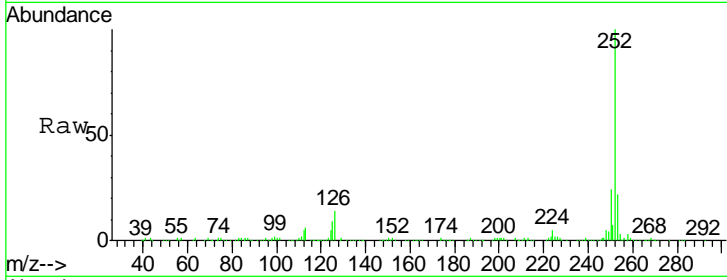


#88
 Benzo(k)fluoranthene
 Concen: 15.11 ng m
 RT: 18.27 min Scan# 1451
 Delta R.T. -0.01 min
 Lab File: BF083677.D
 Acq: 10 Dec 2015 10:44

Instrument :
 BNA_F
ClientSampled :
 SB-P3WC-15(0-8)DL

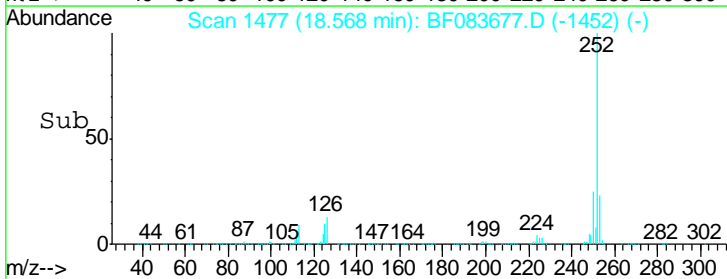
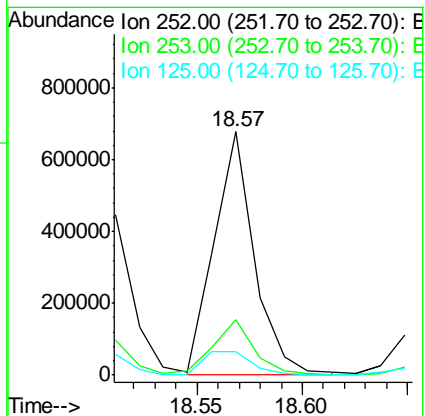
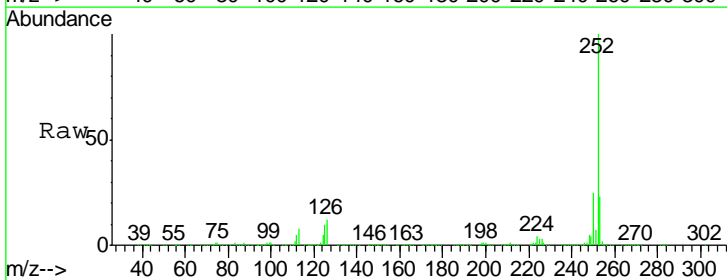
Tgt Ion	Resp	Lower	Upper
252	100		
253	22.4	18.6	27.8
125	9.5	11.5	17.3#

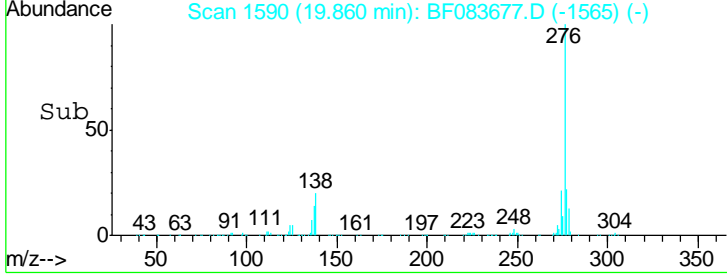
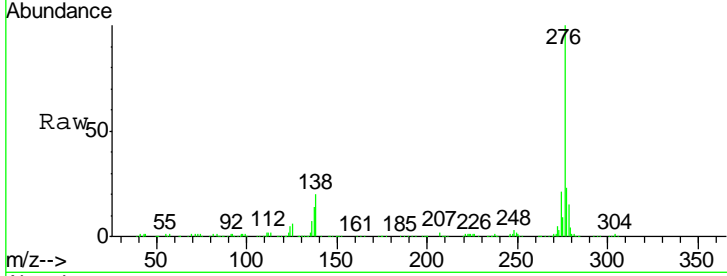
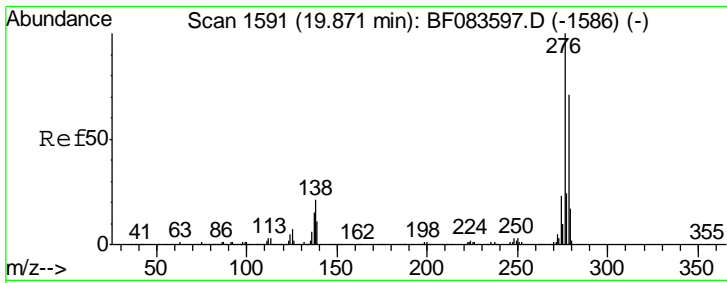
Manual Integrations
APPROVED
 MMDadoda
 12/10/2015 5:50:54 PM



#89
 Benzo(a)pyrene
 Concen: 58.56 ng m
 RT: 18.57 min Scan# 1477
 Delta R.T. -0.01 min
 Lab File: BF083677.D
 Acq: 10 Dec 2015 10:44

Tgt Ion	Resp	Lower	Upper
252	100		
253	22.8	17.5	26.3
125	9.6	11.0	16.6#



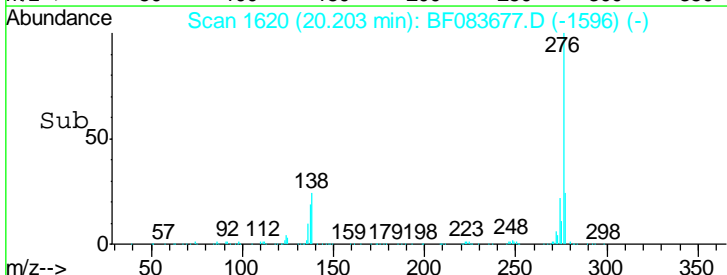
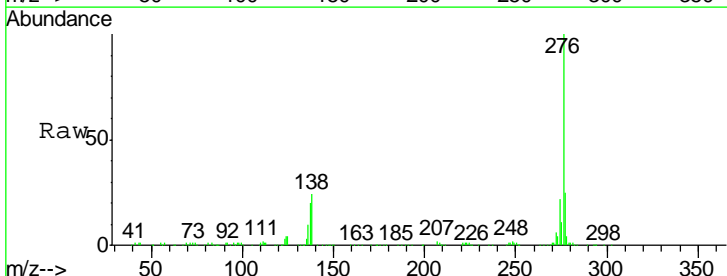
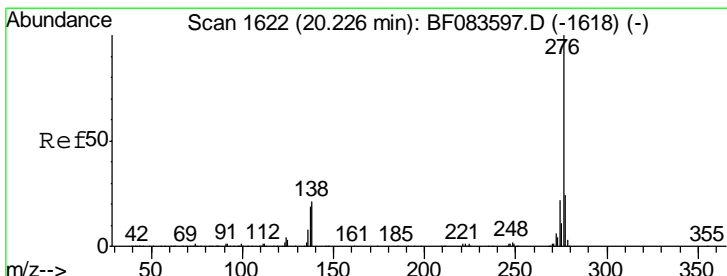
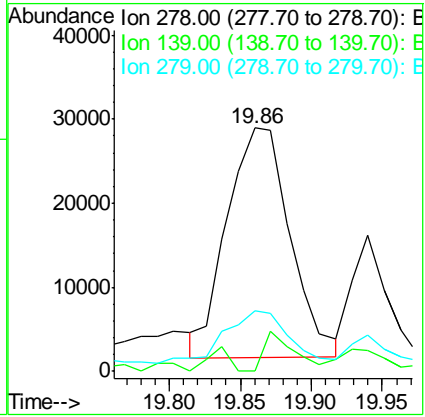


#90
 Dibenzo(a,h)anthracene
 Concen: 7.28 ng m
 RT: 19.86 min Scan# 1590
 Delta R.T. -0.01 min
 Lab File: BF083677.D
 Acq: 10 Dec 2015 10:44

Tgt Ion	Resp	Lower	Upper
278	84608		
278	100		
139	0.0	12.8	19.2#
279	25.1	18.6	28.0

Instrument :
 BNA_F
ClientSampled :
 SB-P3WC-15(0-8)DL

Manual Integrations
APPROVED
 MMDadoda
 12/10/2015 5:50:54 PM



#91
 Benzo(g,h,i)perylene
 Concen: 38.54 ng
 RT: 20.20 min Scan# 1620
 Delta R.T. -0.02 min
 Lab File: BF083677.D
 Acq: 10 Dec 2015 10:44

Tgt Ion	Resp	Lower	Upper
276	436628		
276	100		
277	24.6	19.2	28.8
138	24.2	19.5	29.3

