

Data Path : Z:\HPCHEM1\BNA F\DATA\BF120915\
 Data File : BF083651.D
 Acq On : 9 Dec 2015 21:01
 Operator : UM/IZ
 Sample : G4691-03
 Misc :
 ALS Vial : 17 Sample Multiplier: 1

Instrument :
 BNA_F
 ClientSampleId :
 NC-HB-002

Integration Parameters: rteint.p
 Integrator: RTE
 Smoothing : ON Filtering: 5
 Sampling : 1 Min Area: 3 % of largest Peak
 Start Thrs: 0.2 Max Peaks: 100
 Stop Thrs : 0 Peak Location: TOP

If leading or trailing edge < 100 prefer < Baseline drop else tangent >
 Peak separation: 5

Method : Z:\HPCHEM1\BNA F\METHODS\8270-BF120815.M
 Title : ASP BNA STANDARDS FOR 5 POINT CALIBRATION

Signal : TIC

peak #	R.T. min	first scan	max scan	last scan	PK TY	peak height	corr. area	corr. % max.	% of total
1	3.516	158	160	176	rBV	604629	1233343	25.19%	3.169%
2	3.961	196	199	220	rBV	3445473	4671523	95.40%	12.002%
3	5.253	309	312	320	rBV	3439258	4878376	99.62%	12.533%
4	5.379	320	323	341	rVB	3546888	4897012	100.00%	12.581%
5	5.676	347	349	360	rBV	671456	874782	17.86%	2.247%
6	5.893	365	368	381	rVB	2820594	3568962	72.88%	9.169%
7	6.510	419	422	437	rBV	2173607	3064828	62.59%	7.874%
8	7.573	513	515	526	rBV	778451	1129246	23.06%	2.901%
9	9.322	664	668	671	rBV	3676397	4755490	97.11%	12.217%
10	10.008	726	728	733	rBV	313488	420644	8.59%	1.081%
11	10.362	756	759	765	rBV	919832	1270852	25.95%	3.265%
12	11.208	830	833	836	rBV	86345	109774	2.24%	0.282%
13	11.562	860	864	866	rBV	25468	51655	1.05%	0.133%
14	11.654	869	872	879	rBV	1484990	2048173	41.82%	5.262%
15	11.974	898	900	905	rBV	81737	132649	2.71%	0.341%
16	12.762	966	969	978	rVB	671362	983681	20.09%	2.527%
17	15.391	1195	1199	1202	rBV	2278999	3113488	63.58%	7.999%
18	16.900	1328	1331	1335	rBV2	59905	113608	2.32%	0.292%
19	16.968	1335	1337	1343	rVV	539606	829888	16.95%	2.132%
20	18.614	1479	1481	1492	rVB	449484	775700	15.84%	1.993%

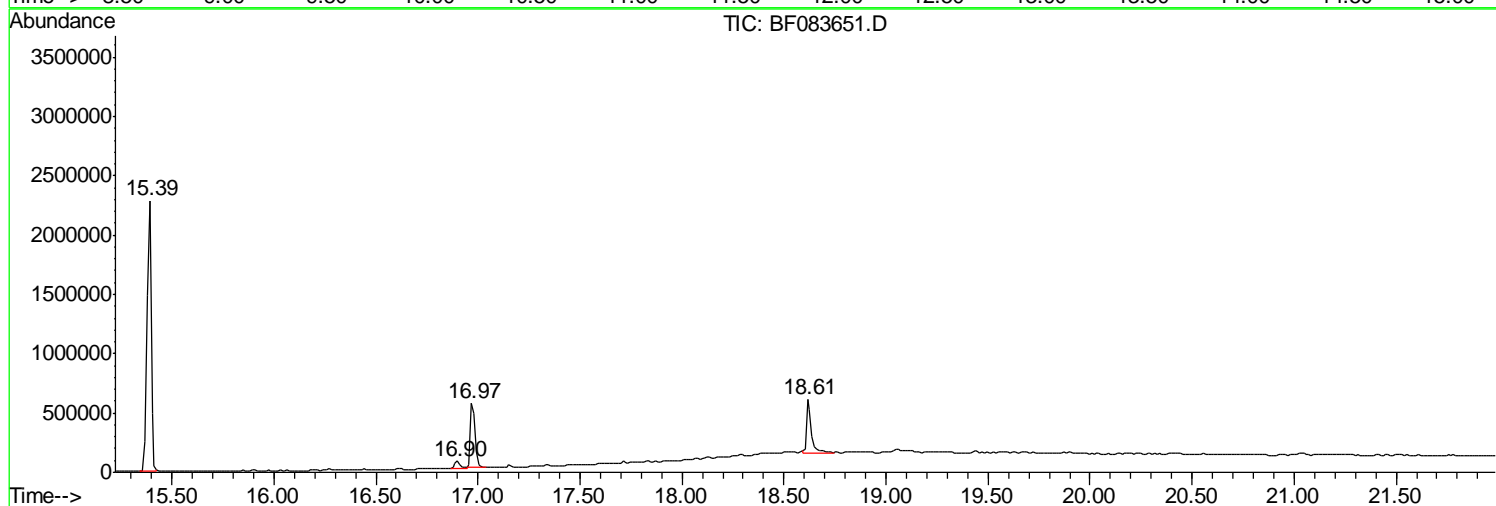
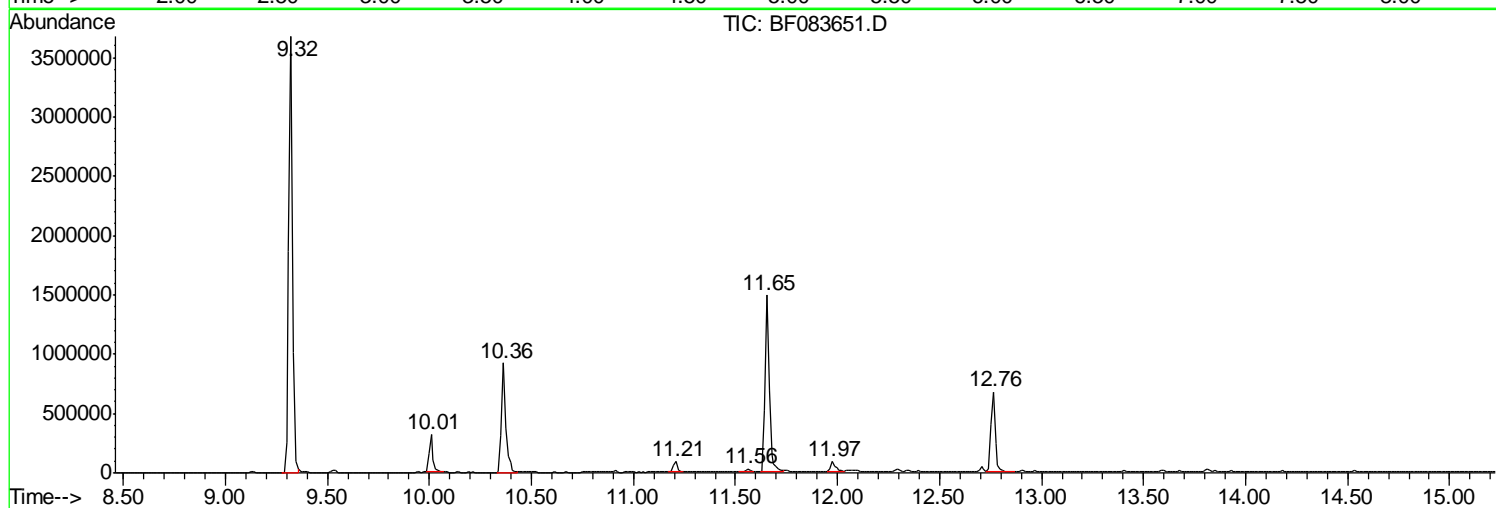
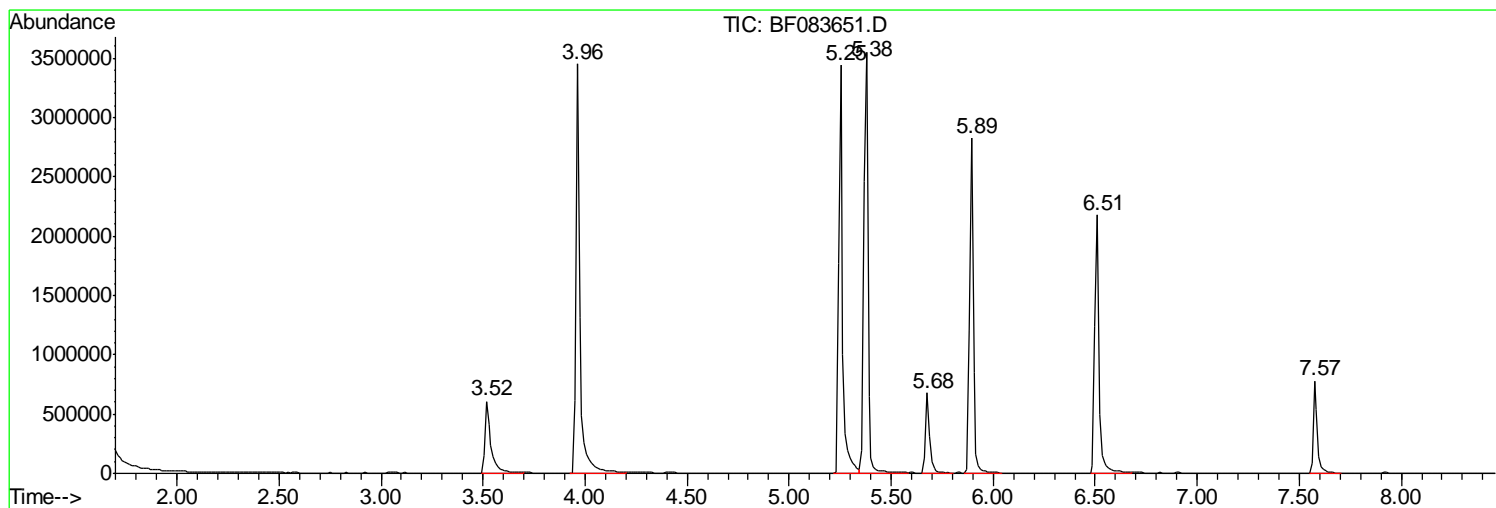
Sum of corrected areas: 38923674

Data Path : Z:\HPCHEM1\BNA F\DATA\BF120915\
Data File : BF083651.D
Acq On : 9 Dec 2015 21:01
Operator : UM/IZ
Sample : G4691-03
Misc :
ALS Vial : 17 Sample Multiplier: 1

Instrument :
BNA_F
ClientSampleId :
NC-HB-002

Quant Method : Z:\HPCHEM1\BNA F\METHODS\8270-BF120815.M
Quant Title : ASP BNA STANDARDS FOR 5 POINT CALIBRATION

TIC Library : C:\DATABASE\NIST02.L
TIC Integration Parameters: LSCINT.P



Data Path : Z:\HPCHEM1\BNA F\DATA\BF120915\
 Data File : BF083651.D
 Acq On : 9 Dec 2015 21:01
 Operator : UM/IZ
 Sample : G4691-03
 Misc :
 ALS Vial : 17 Sample Multiplier: 1

Instrument :
 BNA_F
 ClientSampled :
 NC-HB-002

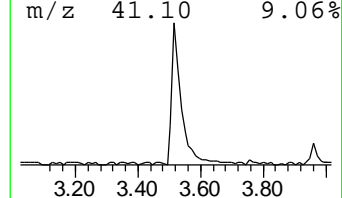
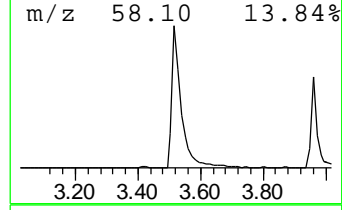
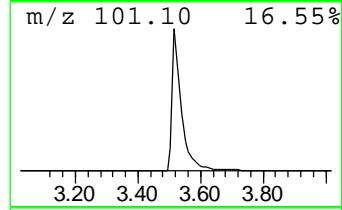
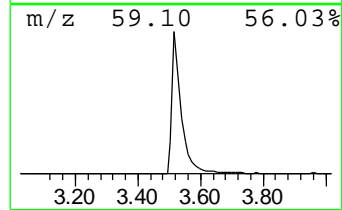
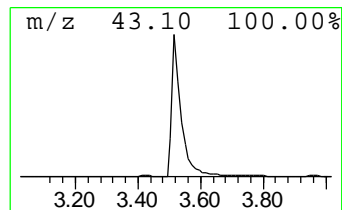
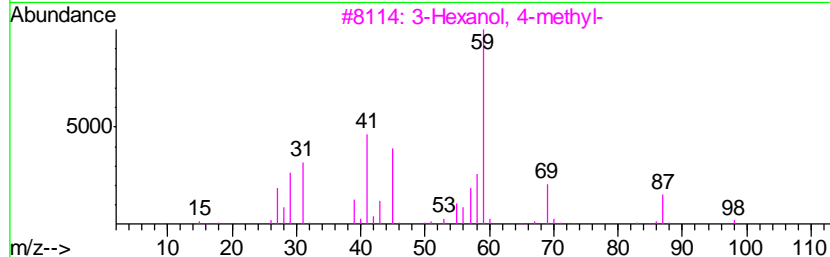
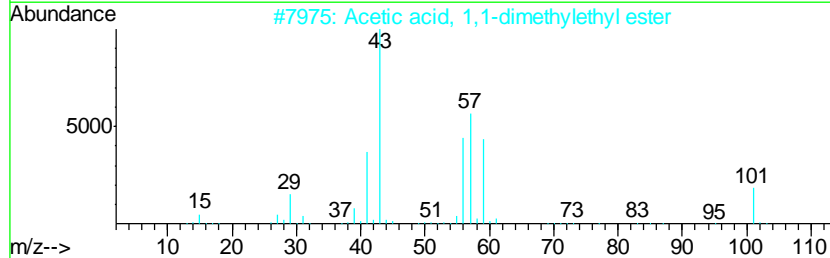
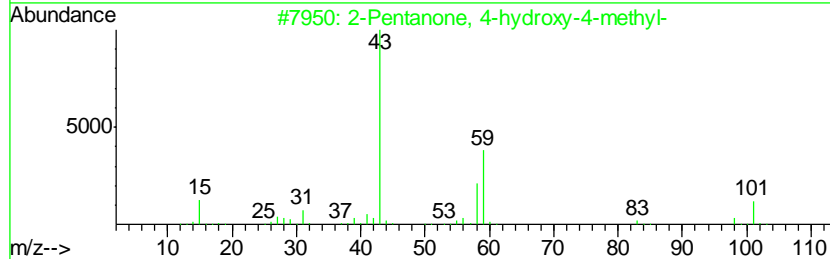
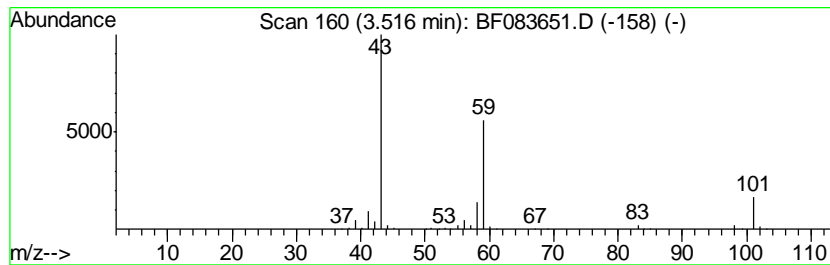
Quant Method : Z:\HPCHEM1\BNA F\METHODS\8270-BF120815.M
 Quant Title : ASP BNA STANDARDS FOR 5 POINT CALIBRATION

TIC Library : C:\DATABASE\NIST02.L
 TIC Integration Parameters: LSCINT.P

 Peak Number 1 2-Pentanone, 4-hydroxy-4-me... Concentration Rank 3

R.T.	EstConc	Area	Relative to ISTD	R.T.
3.52	28.20 ng	1233340	1,4-Dichlorobenzene-d4	5.68

Hit#	of	Tentative ID	MW	MolForm	CAS#	Qual
1	5	2-Pentanone, 4-hydroxy-4-methyl-	116	C6H12O2	000123-42-2	56
2		Acetic acid, 1,1-dimethylethyl e...	116	C6H12O2	000540-88-5	39
3		3-Hexanol, 4-methyl-	116	C7H16O	000615-29-2	33
4		Acetic acid, cyano-, 1,1-dimethy...	141	C7H11NO2	001116-98-9	25
5		2,3-Butanedione, monooxime	101	C4H7NO2	000057-71-6	9



Data Path : Z:\HPCHEM1\BNA F\DATA\BF120915\
 Data File : BF083651.D
 Acq On : 9 Dec 2015 21:01
 Operator : UM/IZ
 Sample : G4691-03
 Misc :
 ALS Vial : 17 Sample Multiplier: 1

Instrument :
 BNA_F
 ClientSampleID :
 NC-HB-002

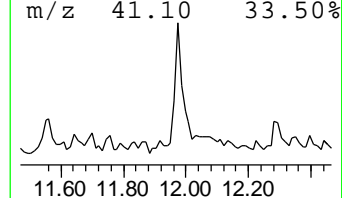
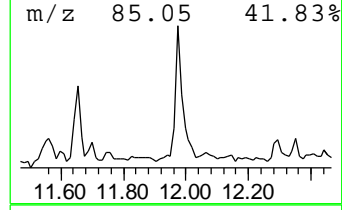
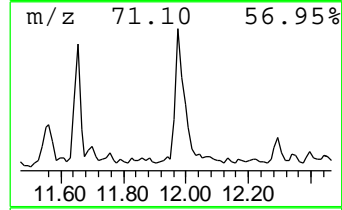
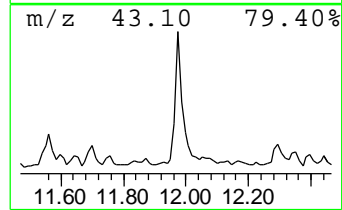
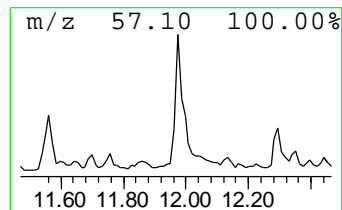
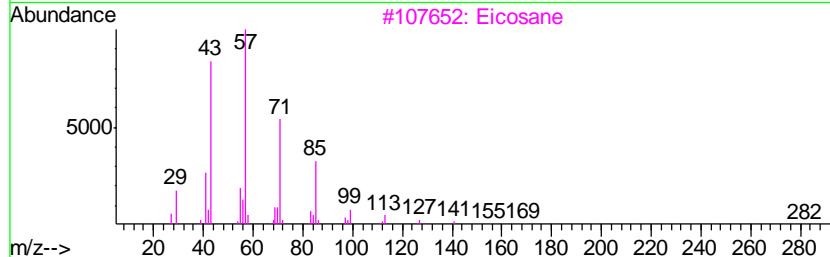
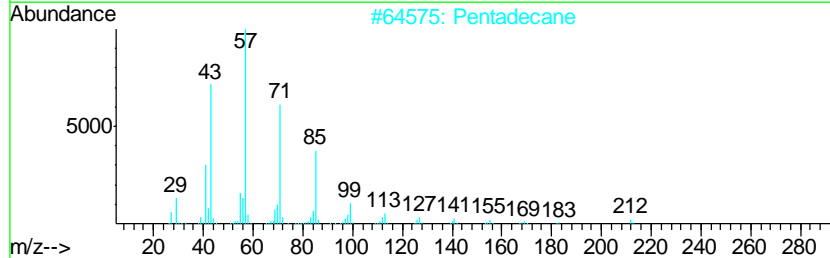
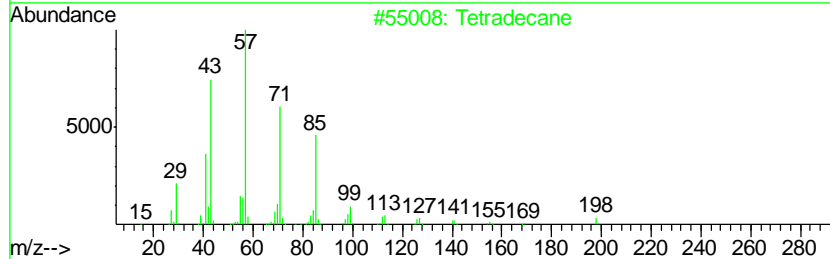
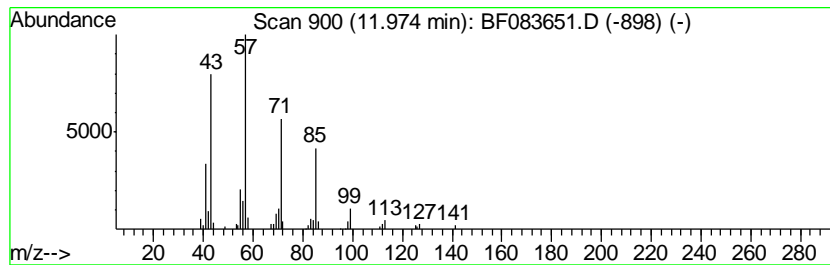
Quant Method : Z:\HPCHEM1\BNA F\METHODS\8270-BF120815.M
 Quant Title : ASP BNA STANDARDS FOR 5 POINT CALIBRATION

TIC Library : C:\DATABASE\NIST02.L
 TIC Integration Parameters: LSCINT.P

 Peak Number 4 Tetradecane Concentration Rank 5

R.T.	EstConc	Area	Relative to ISTD	R.T.
11.97	2.70 ng	132649	Phenanthrene-d10	12.76

Hit#	of	Tentative ID	MW	MolForm	CAS#	Qual
1	5	Tetradecane	198	C14H30	000629-59-4	86
2		Pentadecane	212	C15H32	000629-62-9	86
3		Eicosane	282	C20H42	000112-95-8	83
4		Hexadecane	226	C16H34	000544-76-3	80
5		Decane, 2,3,6-trimethyl-	184	C13H28	062238-12-4	78



Data Path : Z:\HPCHEM1\BNA F\DATA\BF120915\
 Data File : BF083651.D
 Acq On : 9 Dec 2015 21:01
 Operator : UM/IZ
 Sample : G4691-03
 Misc :
 ALS Vial : 17 Sample Multiplier: 1

Instrument :
 BNA_F
 ClientSampled :
 NC-HB-002

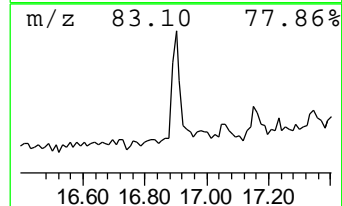
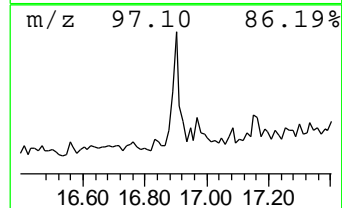
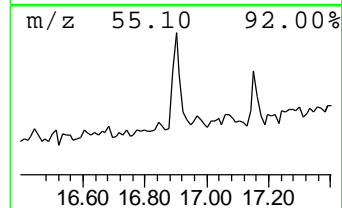
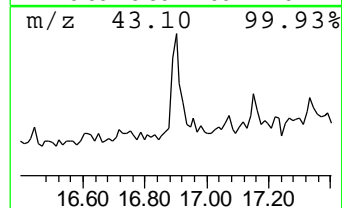
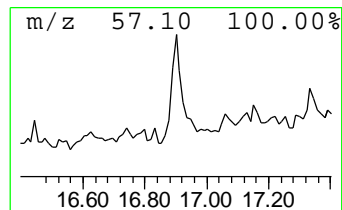
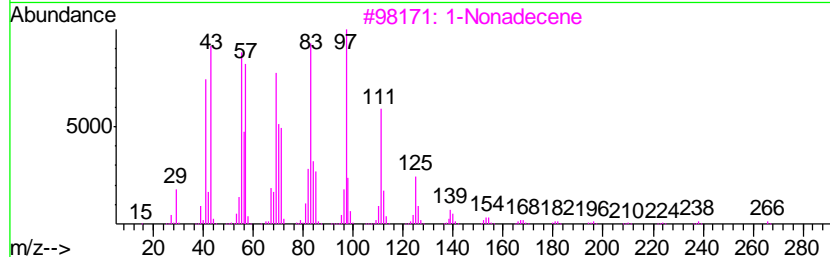
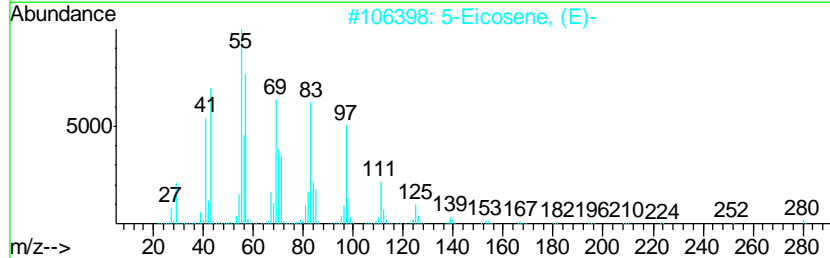
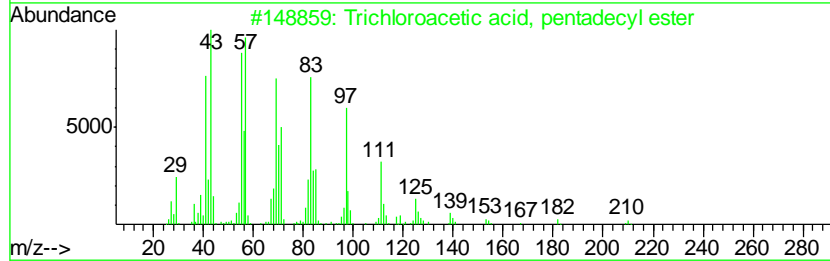
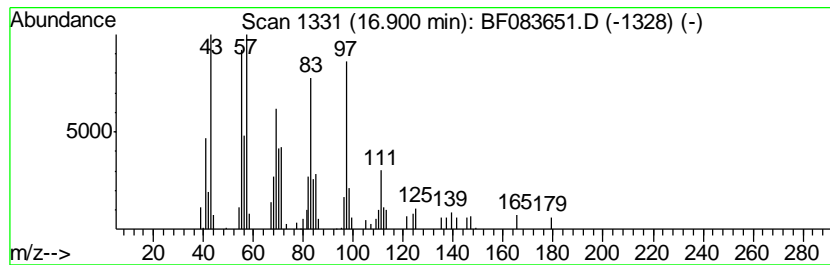
Quant Method : Z:\HPCHEM1\BNA F\METHODS\8270-BF120815.M
 Quant Title : ASP BNA STANDARDS FOR 5 POINT CALIBRATION

TIC Library : C:\DATABASE\NIST02.L
 TIC Integration Parameters: LSCINT.P

 Peak Number 5 Trichloroacetic acid, penta... Concentration Rank 4

R.T.	EstConc	Area	Relative to ISTD	R.T.
16.90	2.74 ng	113608	Chrysene-d12	16.97

Hit#	of	Tentative ID	MW	MolForm	CAS#	Qual
1	5	Trichloroacetic acid, pentadecyl...	372	C17H31Cl3O2	074339-53-0	93
2		5-Eicosene, (E)-	280	C20H40	074685-30-6	91
3		1-Nonadecene	266	C19H38	018435-45-5	91
4		Dichloroacetic acid, tetradecyl ...	324	C16H30Cl2O2	083005-02-1	87
5		Trichloroacetic acid, hexadecyl ...	386	C18H33Cl3O2	074339-54-1	87



Data Path : Z:\HPCHEM1\BNA_F\DATA\BF120915\
Data File : BF083651.D
Acq On : 9 Dec 2015 21:01
Operator : UM/IZ
Sample : G4691-03
Misc :
ALS Vial : 17 Sample Multiplier: 1

Instrument :
BNA_F
ClientSampleId :
NC-HB-002

Quant Method : Z:\HPCHEM1\BNA_F\METHODS\8270-BF120815.M
Quant Title : ASP BNA STANDARDS FOR 5 POINT CALIBRATION

TIC Library : C:\DATABASE\NIST02.L
TIC Integration Parameters: LSCINT.P

TIC Top Hit name	RT	EstConc	Units	Response	--Internal Standard--			
					#	RT	Resp	Conc
2-Pentanone, 4-hy...	3.52	28.2	ng	1233340	1	5.68	874782	20.0
Tetradecane	11.97	2.7	ng	132649	4	12.76	983681	20.0
Trichloroacetic a...	16.90	2.7	ng	113608	5	16.97	829888	20.0