

Data Path : Z:\svoasrv\HPCHEM1\BNA_F\Data\BF121124\
 Data File : BF140829.D
 Acq On : 11 Dec 2024 15:15
 Operator : RC/JU
 Sample : P5192-02
 Misc :
 ALS Vial : 11 Sample Multiplier: 1

Instrument :
 BNA_F
 ClientSampleId :
 EFF-WASTE WATER

Quant Time: Dec 11 15:40:43 2024
 Quant Method : Z:\svoasrv\HPCHEM1\BNA_F\Methods\8270-BF112124.M
 Quant Title : ASP BNA STANDARDS FOR 5 POINT CALIBRATION
 QLast Update : Thu Nov 21 15:23:48 2024
 Response via : Initial Calibration

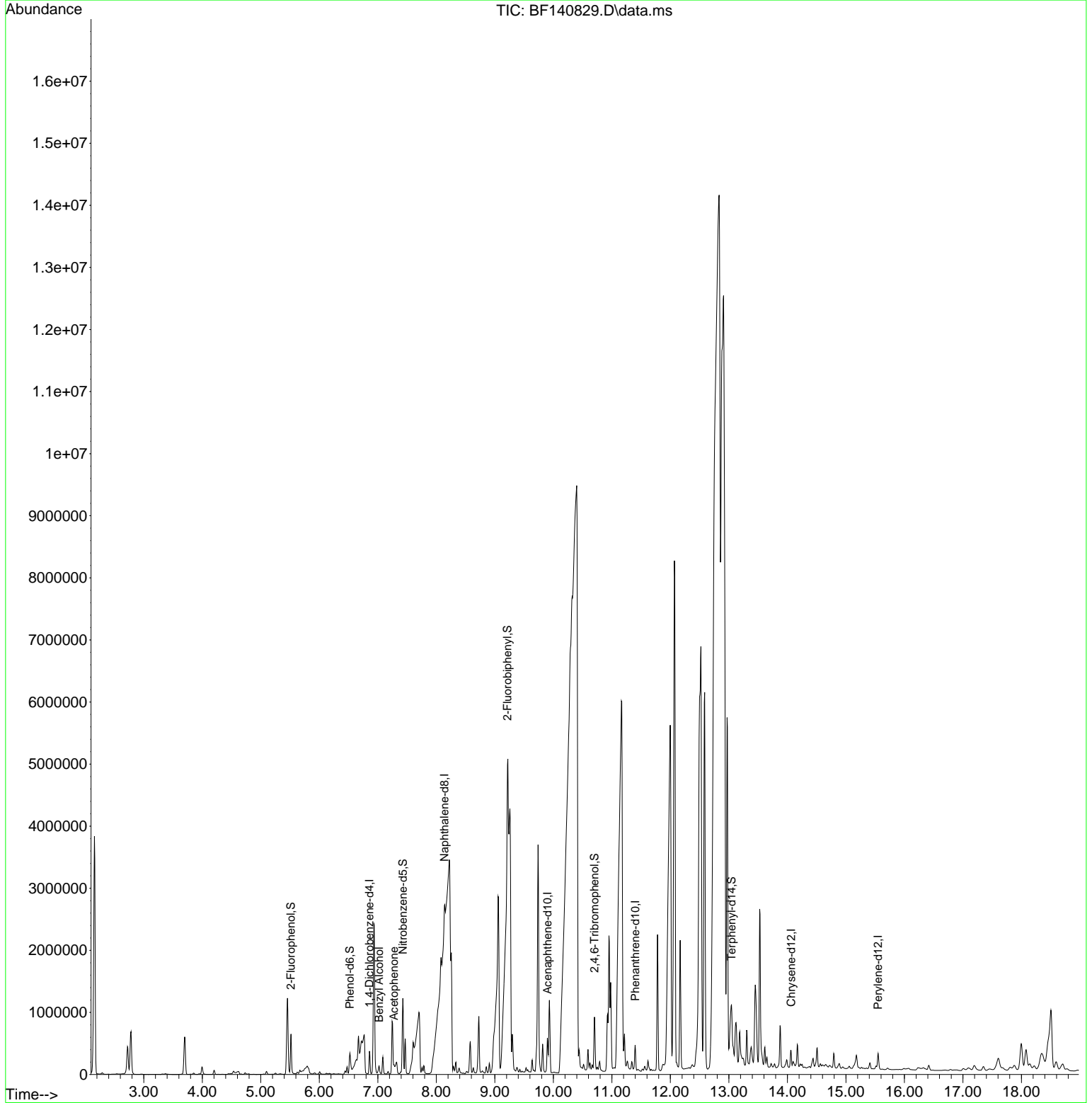
Compound	R.T.	QIon	Response	Conc	Units	Dev(Min)
Internal Standards						
1) 1,4-Dichlorobenzene-d4	6.857	152	77371	20.000	ng	-0.02
21) Naphthalene-d8	8.139	136	256384	20.000	ng	#-0.02
39) Acenaphthene-d10	9.898	164	159565	20.000	ng	-0.02
64) Phenanthrene-d10	11.398	188	212898	20.000	ng	0.00
76) Chrysene-d12	14.062	240	135537	20.000	ng	0.01
86) Perylene-d12	15.551	264	146438	20.000	ng	0.01
System Monitoring Compounds						
5) 2-Fluorophenol	5.516	112	237279	52.325	ng	0.02
7) Phenol-d6	6.522	99	203171	33.890	ng	0.00
23) Nitrobenzene-d5	7.428	82	555873	110.900	ng	-0.01
42) 2,4,6-Tribromophenol	10.704	330	138584	81.207	ng	0.00
45) 2-Fluorobiphenyl	9.216	172	1049742	98.020	ng	-0.02
79) Terphenyl-d14	13.045	244	834246	95.843	ng	0.05
Target Compounds						Qvalue
15) Benzyl Alcohol	7.022	79	33431	7.520	ng	98
22) Acetophenone	7.275	105	32091	5.134	ng	# 91

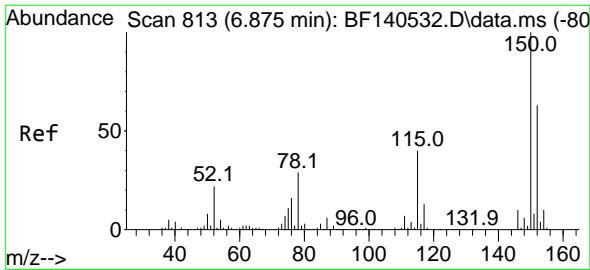
(#) = qualifier out of range (m) = manual integration (+) = signals summed

Data Path : Z:\svoasrv\HPCHEM1\BNA_F\Data\BF121124\
 Data File : BF140829.D
 Acq On : 11 Dec 2024 15:15
 Operator : RC/JU
 Sample : P5192-02
 Misc :
 ALS Vial : 11 Sample Multiplier: 1

Instrument :
 BNA_F
 ClientSampleId :
 EFF-WASTE WATER

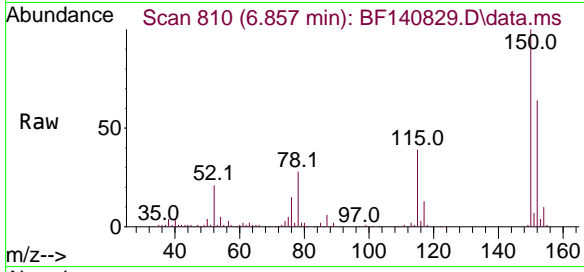
Quant Time: Dec 11 15:40:43 2024
 Quant Method : Z:\svoasrv\HPCHEM1\BNA_F\Methods\8270-BF112124.M
 Quant Title : ASP BNA STANDARDS FOR 5 POINT CALIBRATION
 QLast Update : Thu Nov 21 15:23:48 2024
 Response via : Initial Calibration



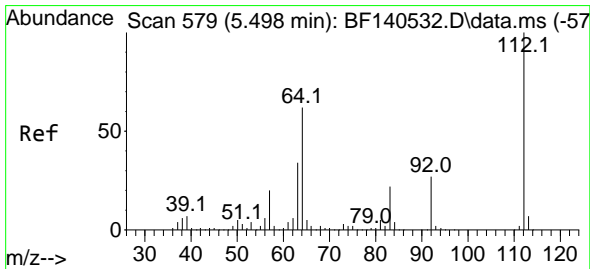
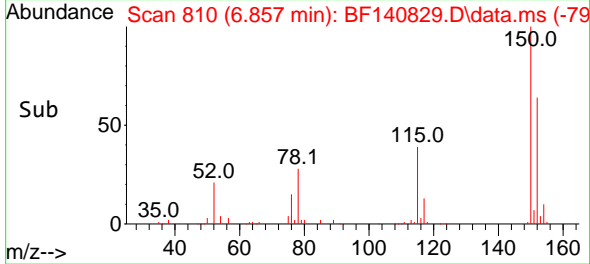
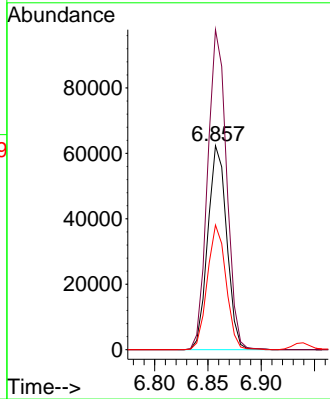


#1
 1,4-Dichlorobenzene-d4
 Concen: 20.000 ng
 RT: 6.857 min Scan# 81
 Delta R.T. -0.018 min
 Lab File: BF140829.D
 Acq: 11 Dec 2024 15:15

Instrument :
 BNA_F
 ClientSampleId :
 EFF-WASTE WATER

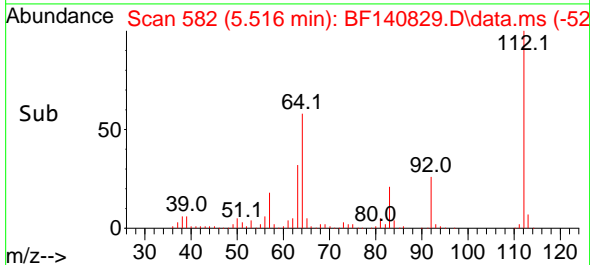
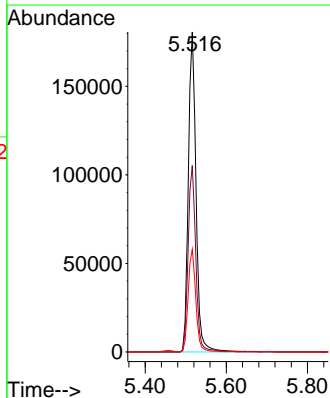
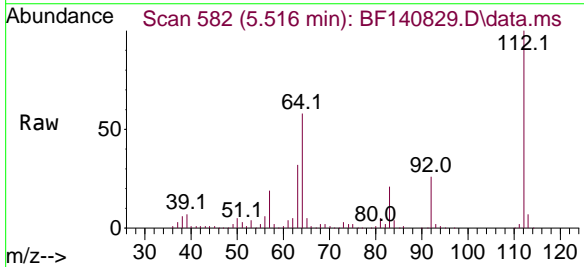


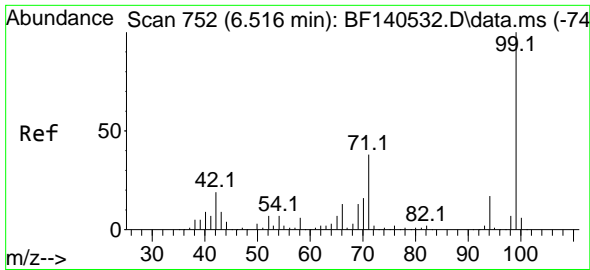
Tgt Ion:152 Resp: 77371
 Ion Ratio Lower Upper
 152 100
 150 156.8 128.5 192.7
 115 61.1 50.2 75.4



#5
 2-Fluorophenol
 Concen: 52.325 ng
 RT: 5.516 min Scan# 582
 Delta R.T. 0.018 min
 Lab File: BF140829.D
 Acq: 11 Dec 2024 15:15

Tgt Ion:112 Resp: 237279
 Ion Ratio Lower Upper
 112 100
 64 58.2 49.2 73.8
 63 32.1 27.0 40.4



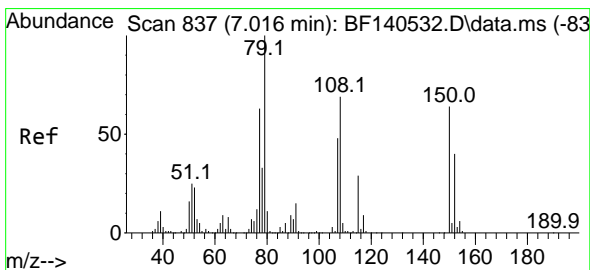
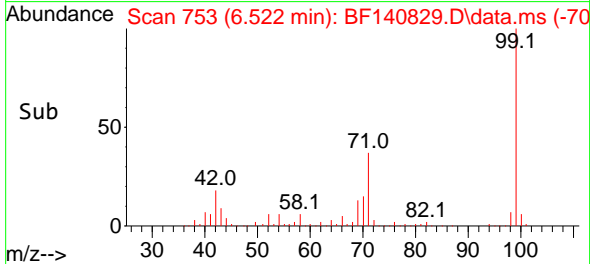
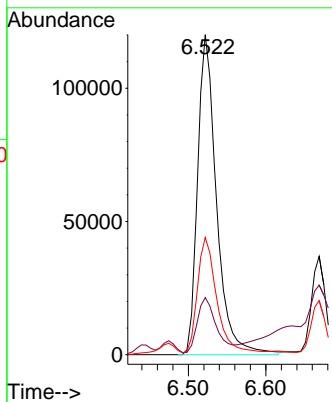
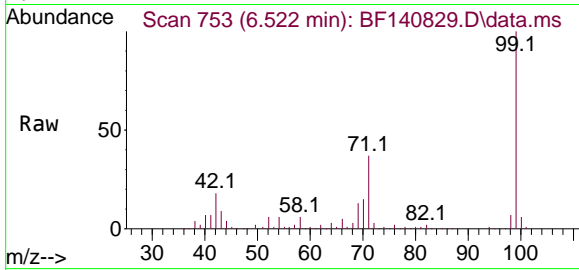


#7
 Phenol-d6
 Concen: 33.890 ng
 RT: 6.522 min Scan# 71
 Delta R.T. 0.006 min
 Lab File: BF140829.D
 Acq: 11 Dec 2024 15:15

Instrument :
 BNA_F
 ClientSampleId :
 EFF-WASTE WATER

Tgt Ion: 99 Resp: 203171

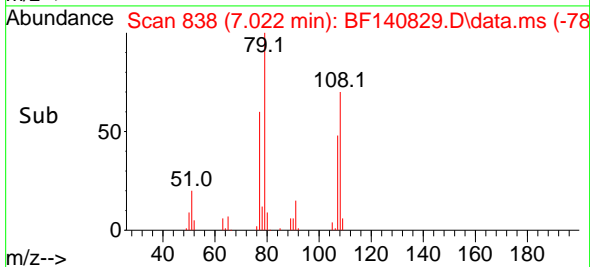
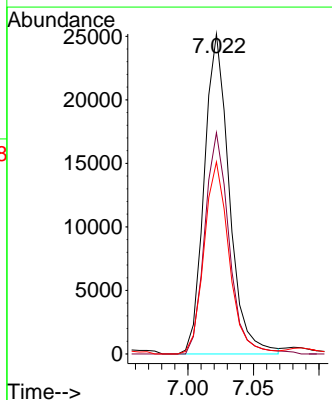
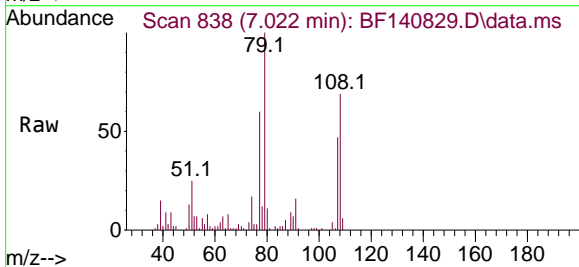
Ion	Ratio	Lower	Upper
99	100		
42	17.8	15.4	23.0
71	36.7	30.6	46.0

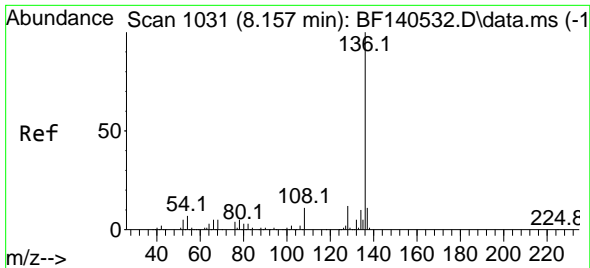


#15
 Benzyl Alcohol
 Concen: 7.520 ng
 RT: 7.022 min Scan# 838
 Delta R.T. 0.006 min
 Lab File: BF140829.D
 Acq: 11 Dec 2024 15:15

Tgt Ion: 79 Resp: 33431

Ion	Ratio	Lower	Upper
79	100		
108	69.2	55.0	82.6
77	60.0	50.1	75.1

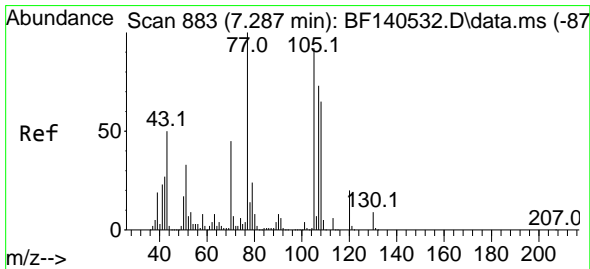
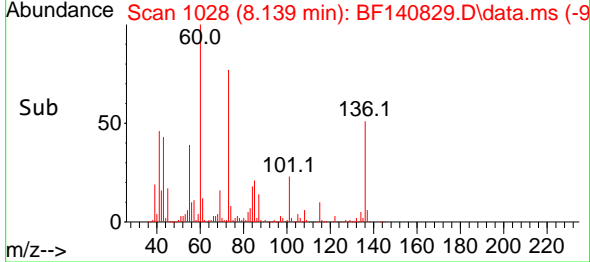
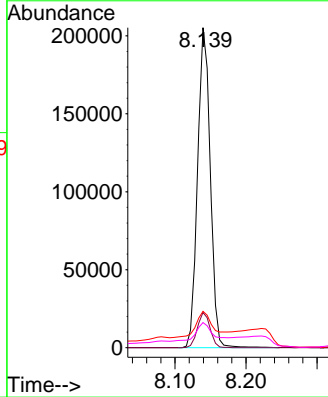
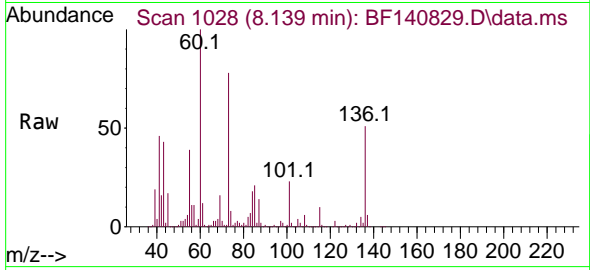




#21
 Naphthalene-d8
 Concen: 20.000 ng
 RT: 8.139 min Scan# 1031
 Delta R.T. -0.018 min
 Lab File: BF140829.D
 Acq: 11 Dec 2024 15:15

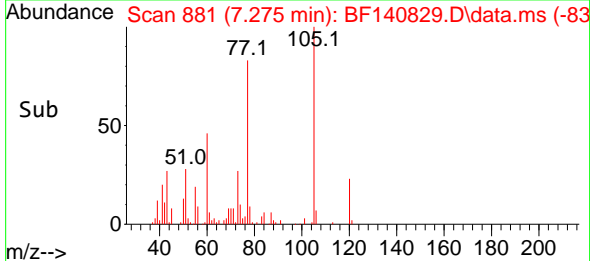
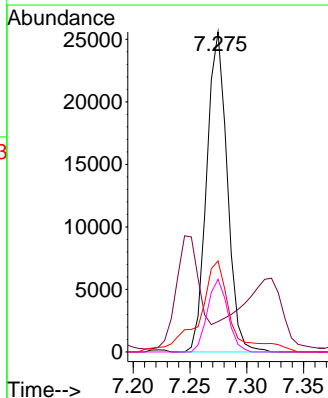
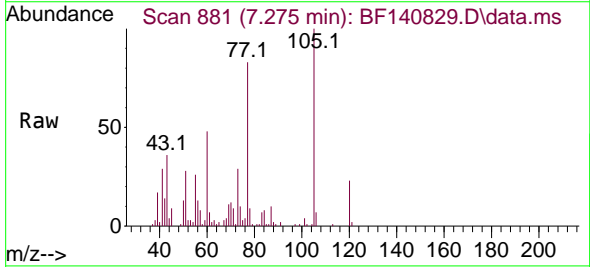
Instrument : BNA_F
 ClientSampleId : EFF-WASTE WATER

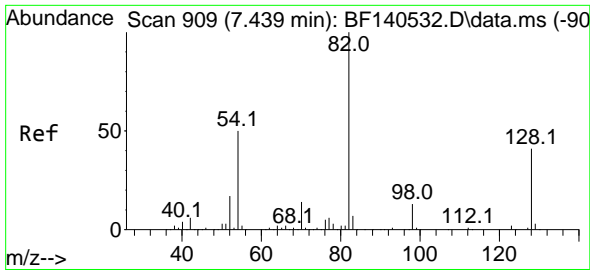
Tgt Ion	Resp	Lower	Upper
136	256384		
137	11.0	8.6	13.0
54	11.3	5.8	8.8#
68	7.9	4.1	6.1#



#22
 Acetophenone
 Concen: 5.134 ng
 RT: 7.275 min Scan# 881
 Delta R.T. -0.012 min
 Lab File: BF140829.D
 Acq: 11 Dec 2024 15:15

Tgt Ion	Resp	Lower	Upper
105	32091		
105	100		
71	9.5	6.2	9.2#
51	28.4	29.0	43.6#
120	22.7	17.4	26.0

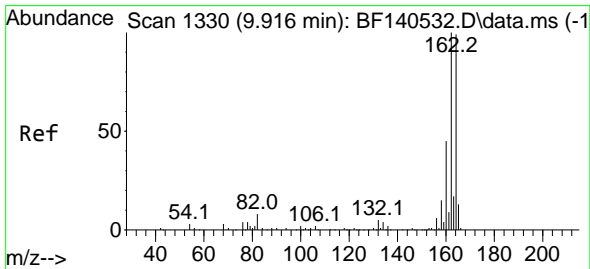
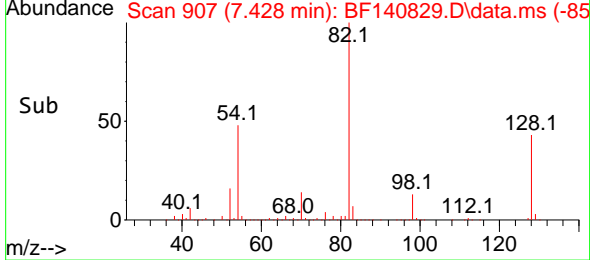
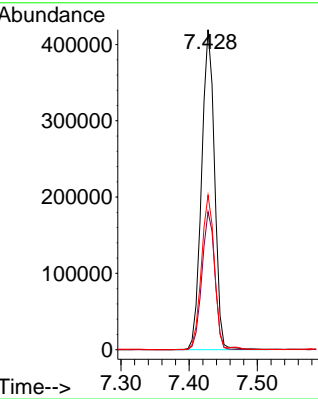
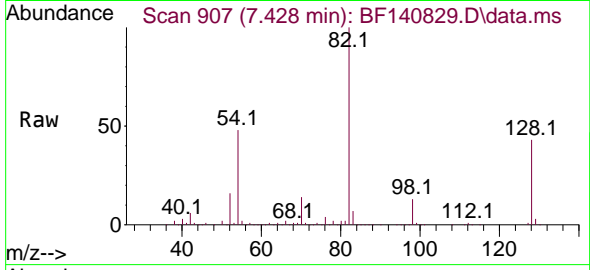




#23
 Nitrobenzene-d5
 Concen: 110.900 ng
 RT: 7.428 min Scan# 907
 Delta R.T. -0.012 min
 Lab File: BF140829.D
 Acq: 11 Dec 2024 15:15

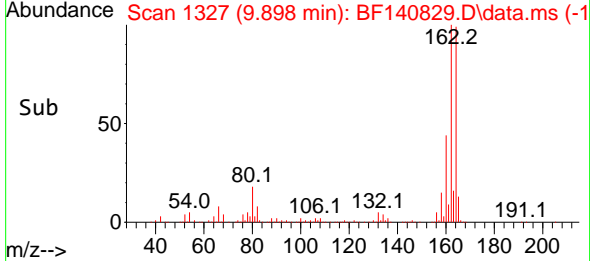
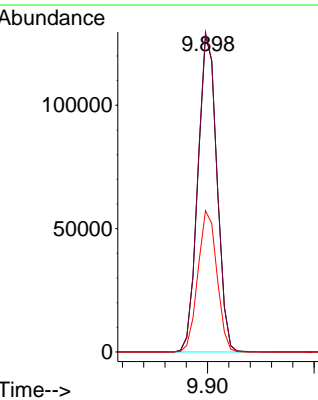
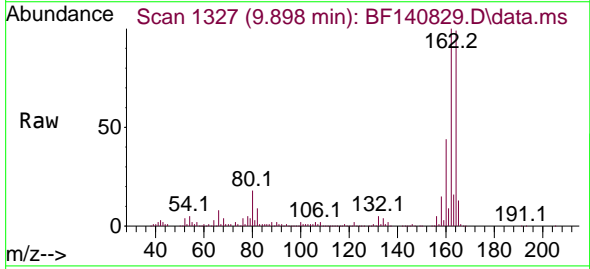
Instrument :
 BNA_F
 ClientSampleId :
 EFF-WASTE WATER

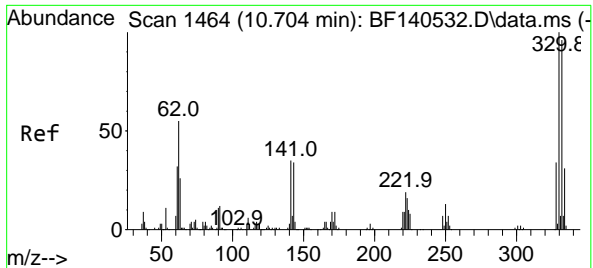
Tgt Ion	Resp	Lower	Upper
82	100		
128	43.1	33.0	49.4
54	48.3	39.5	59.3



#39
 Acenaphthene-d10
 Concen: 20.000 ng
 RT: 9.898 min Scan# 1327
 Delta R.T. -0.018 min
 Lab File: BF140829.D
 Acq: 11 Dec 2024 15:15

Tgt Ion	Resp	Lower	Upper
164	100		
162	100.9	80.6	120.8
160	44.6	36.2	54.4



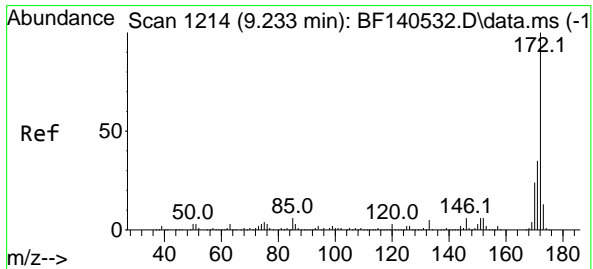
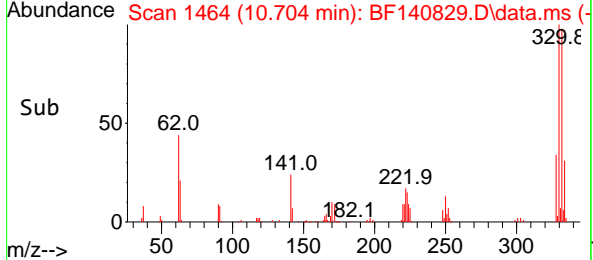
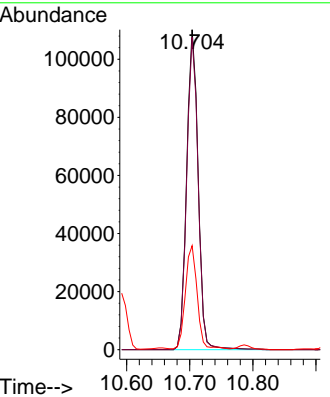
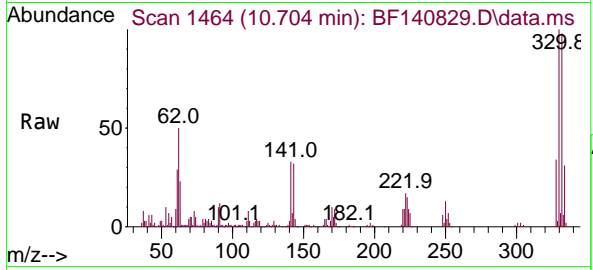


#42
 2,4,6-Tribromophenol
 Concen: 81.207 ng
 RT: 10.704 min Scan# 14
 Delta R.T. -0.000 min
 Lab File: BF140829.D
 Acq: 11 Dec 2024 15:15

Instrument : BNA_F
 ClientSampleId : EFF-WASTE WATER

Tgt Ion:330 Resp: 138584

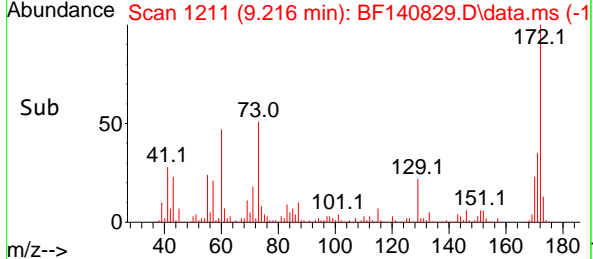
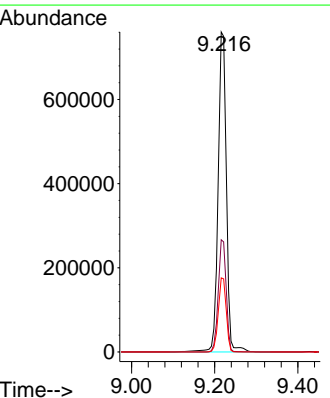
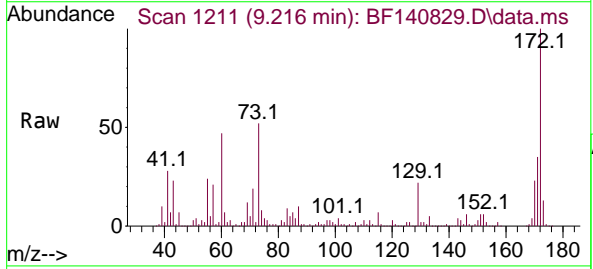
Ion	Ratio	Lower	Upper
330	100		
332	97.3	76.9	115.3
141	33.1	26.7	40.1

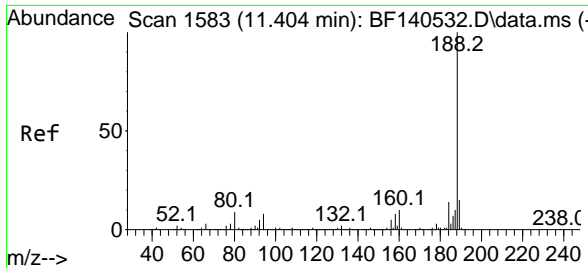


#45
 2-Fluorobiphenyl
 Concen: 98.020 ng
 RT: 9.216 min Scan# 1211
 Delta R.T. -0.018 min
 Lab File: BF140829.D
 Acq: 11 Dec 2024 15:15

Tgt Ion:172 Resp: 1049742

Ion	Ratio	Lower	Upper
172	100		
171	35.1	28.4	42.6
170	23.2	19.0	28.6



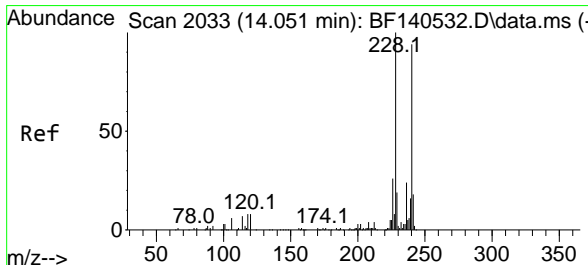
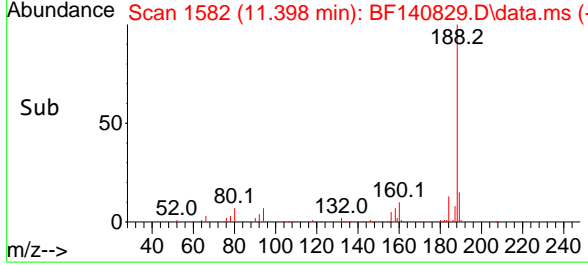
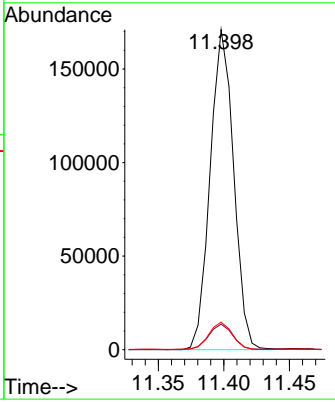
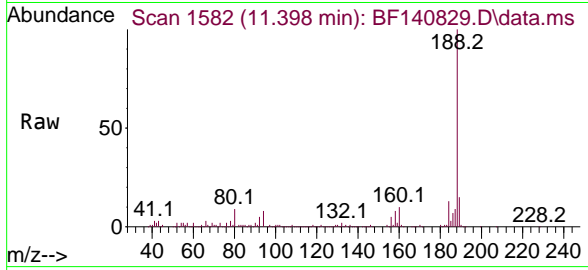


#64
 Phenanthrene-d10
 Concen: 20.000 ng
 RT: 11.398 min Scan# 11
 Delta R.T. -0.006 min
 Lab File: BF140829.D
 Acq: 11 Dec 2024 15:15

Instrument : BNA_F
 ClientSampleId : EFF-WASTE WATER

Tgt Ion:188 Resp: 212898

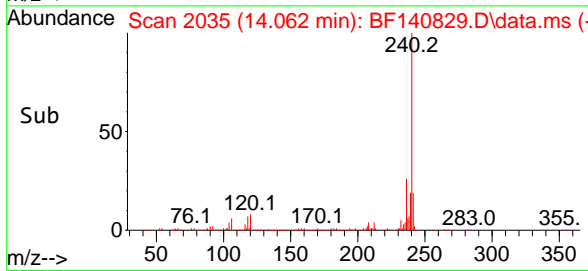
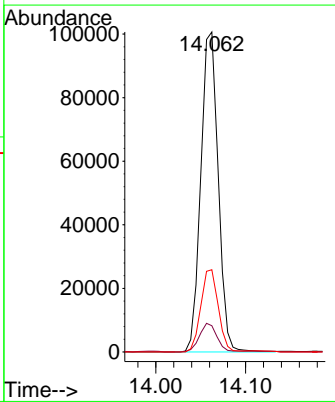
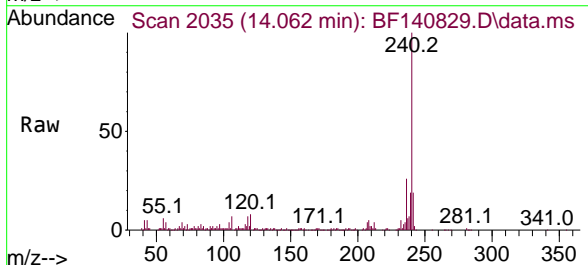
Ion	Ratio	Lower	Upper
188	100		
94	8.0	6.4	9.6
80	8.6	6.9	10.3

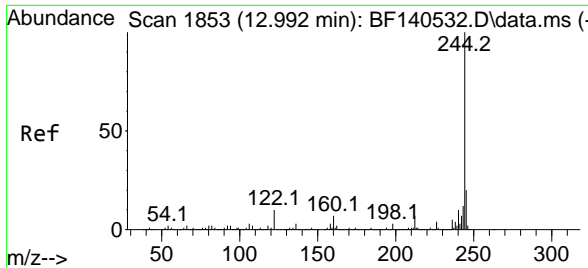


#76
 Chrysene-d12
 Concen: 20.000 ng
 RT: 14.062 min Scan# 2035
 Delta R.T. 0.012 min
 Lab File: BF140829.D
 Acq: 11 Dec 2024 15:15

Tgt Ion:240 Resp: 135537

Ion	Ratio	Lower	Upper
240	100		
120	8.2	7.3	10.9
236	25.7	20.6	31.0



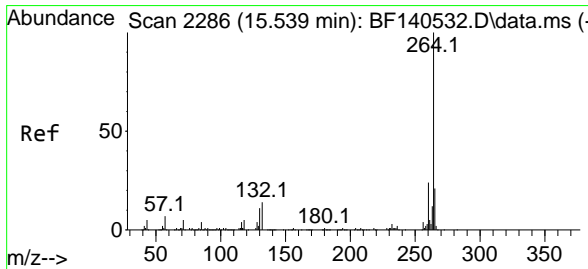
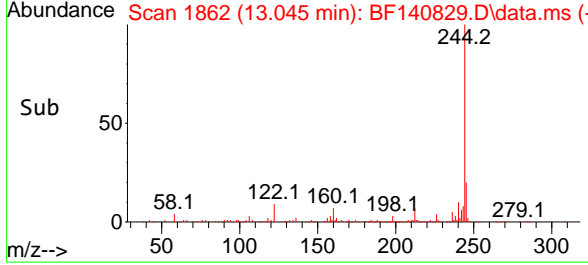
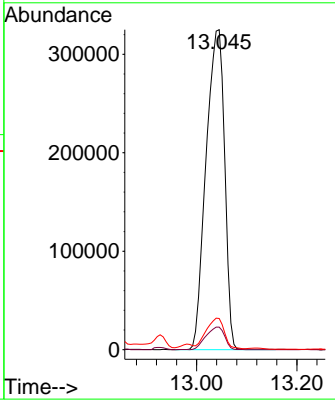
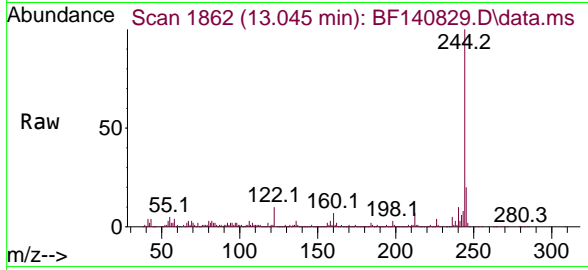


#79
 Terphenyl-d14
 Concen: 95.843 ng
 RT: 13.045 min Scan# 11
 Delta R.T. 0.053 min
 Lab File: BF140829.D
 Acq: 11 Dec 2024 15:15

Instrument : BNA_F
 ClientSampleId : EFF-WASTE WATER

Tgt Ion:244 Resp: 834246

Ion	Ratio	Lower	Upper
244	100		
212	7.1	5.8	8.8
122	9.7	8.0	12.0



#86
 Perylene-d12
 Concen: 20.000 ng
 RT: 15.551 min Scan# 2288
 Delta R.T. 0.012 min
 Lab File: BF140829.D
 Acq: 11 Dec 2024 15:15

Tgt Ion:264 Resp: 146438

Ion	Ratio	Lower	Upper
264	100		
260	23.7	19.0	28.6
265	21.0	16.6	25.0

