

Data Path : Z:\svoasrv\HPCHEM1\BNA\_F\Data\BF121222\  
 Data File : BF131602.D  
 Acq On : 12 Dec 2022 20:15  
 Operator : CG\JU  
 Sample : N5912-01RE  
 Misc :  
 ALS Vial : 15 Sample Multiplier: 1

Instrument :  
 BNA\_F  
 ClientSampleId :  
 FMC-TOTE-1207RE

Quant Time: Dec 13 04:17:46 2022  
 Quant Method : Z:\svoasrv\HPCHEM1\BNA\_F\Methods\8270-BF120822.M  
 Quant Title : ASP BNA STANDARDS FOR 5 POINT CALIBRATION  
 QLast Update : Tue Dec 13 04:12:13 2022  
 Response via : Initial Calibration

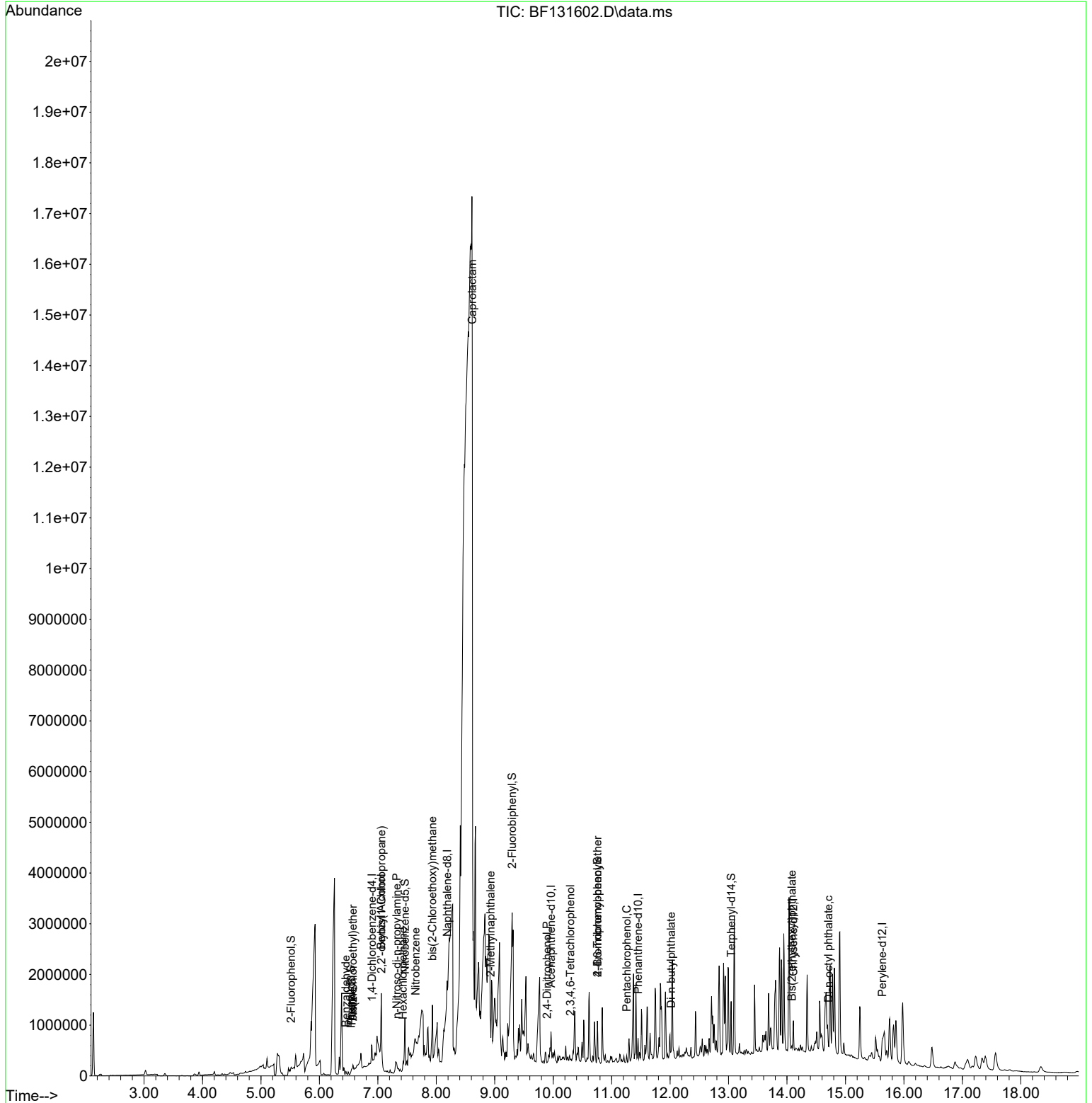
Compound	R.T.	QIon	Response	Conc	Units	Dev(Min)	
Internal Standards							
1) 1,4-Dichlorobenzene-d4	6.898	152	47988	20.000	ng	0.00	
21) Naphthalene-d8	8.186	136	160403	20.000	ng	# 0.00	
39) Acenaphthene-d10	9.963	164	79630	20.000	ng	0.01	
64) Phenanthrene-d10	11.451	188	136156	20.000	ng	# 0.00	
76) Chrysene-d12	14.110	240	120158	20.000	ng	# 0.00	
86) Perylene-d12	15.627	264	131177	20.000	ng	0.01	
System Monitoring Compounds							
5) 2-Fluorophenol	5.516	112	34485	11.989	ng	0.00	
7) Phenol-d6	6.540	99	15719	4.170	ng	0.01	
23) Nitrobenzene-d5	7.463	82	266518	62.818	ng	0.00	
42) 2,4,6-Tribromophenol	10.757	330	85250	96.359	ng	0.00	
45) 2-Fluorobiphenyl	9.298	172	403382	63.872	ng	0.03	
79) Terphenyl-d14	13.045	244	327173	37.341	ng	0.00	
Target Compounds							
6) Aniline	6.575	93	16733	3.712	ng	#	1
9) Benzaldehyde	6.451	77	5998	2.323	ng	#	1
10) Phenol	6.551	94	27380	6.512	ng		98
11) bis(2-Chloroethyl)ether	6.575	93	16733	5.309	ng	#	68
15) Benzyl Alcohol	7.057	79	15366	4.447	ng	#	1
16) 2,2'-oxybis(1-Chloropr...	7.063	45	54913	13.488	ng		88
18) Hexachloroethane	7.428	117	4599	3.198	ng	#	1
19) n-Nitroso-di-n-propyla...	7.322	70	12844	4.544	ng	#	33
24) Nitrobenzene	7.645	77	227477	53.159	ng	#	57
28) bis(2-Chloroethoxy)met...	7.934	93	23921	6.766	ng	#	1
35) Caprolactam	8.616	113	6934	9.692	ng	#	1
37) 2-Methylnaphthalene	8.928	142	12623	2.043	ng		85
54) 2,4-Dinitrophenol	9.892	184	69	4.187	ng	#	1
59) 2,3,4,6-Tetrachlorophenol	10.292	232	5804	3.495	ng	#	58
67) 4-Bromophenyl-phenylether	10.757	248	6086	3.475	ng	#	1
70) Pentachlorophenol	11.257	266	11855	12.155	ng		96
74) Di-n-butylphthalate	12.016	149	40176	5.434	ng	#	94
84) Bis(2-ethylhexyl)phtha...	14.086	149	20980	7.240	ng	#	94
85) Di-n-octyl phthalate	14.710	149	1348	5.376	ng	#	74

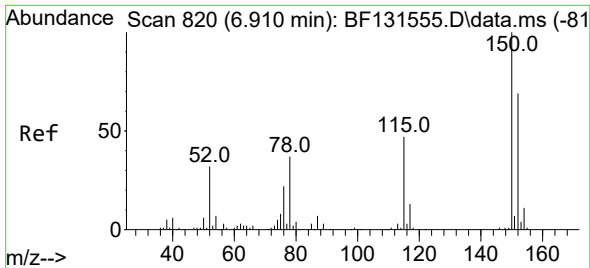
(#) = qualifier out of range (m) = manual integration (+) = signals summed

Data Path : Z:\svoasrv\HPCHEM1\BNA\_F\Data\BF121222\  
 Data File : BF131602.D  
 Acq On : 12 Dec 2022 20:15  
 Operator : CG\JU  
 Sample : N5912-01RE  
 Misc :  
 ALS Vial : 15 Sample Multiplier: 1

Instrument :  
 BNA\_F  
 ClientSampleId :  
 FMC-TOTE-1207RE

Quant Time: Dec 13 04:17:46 2022  
 Quant Method : Z:\svoasrv\HPCHEM1\BNA\_F\Methods\8270-BF120822.M  
 Quant Title : ASP BNA STANDARDS FOR 5 POINT CALIBRATION  
 QLast Update : Tue Dec 13 04:12:13 2022  
 Response via : Initial Calibration

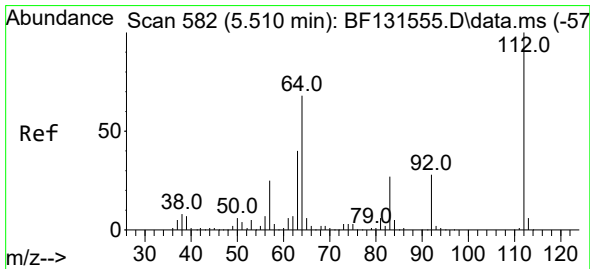
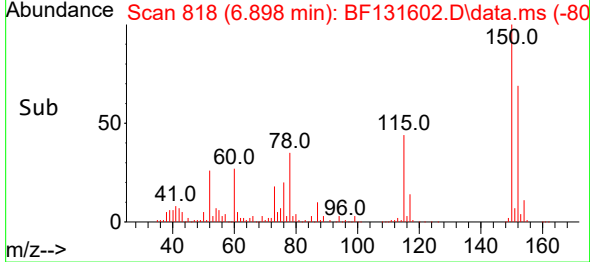
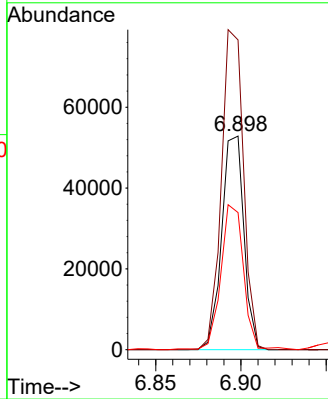
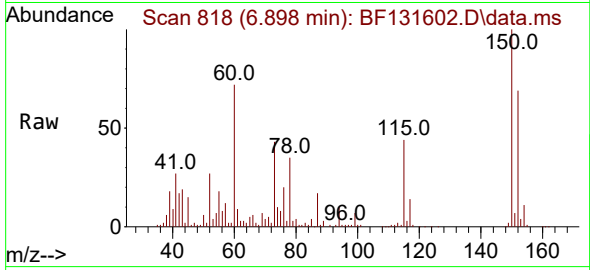




#1  
 1,4-Dichlorobenzene-d4  
 Concen: 20.000 ng  
 RT: 6.898 min Scan# 81  
 Delta R.T. 0.006 min  
 Lab File: BF131602.D  
 Acq: 12 Dec 2022 20:15

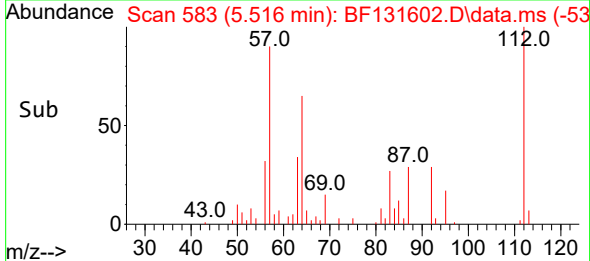
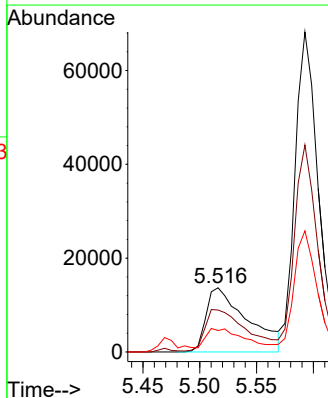
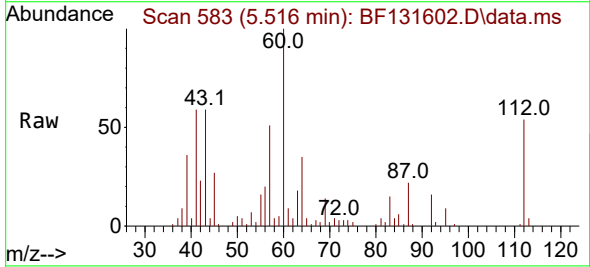
Instrument :  
 BNA\_F  
 ClientSampleId :  
 FMC-TOTE-1207RE

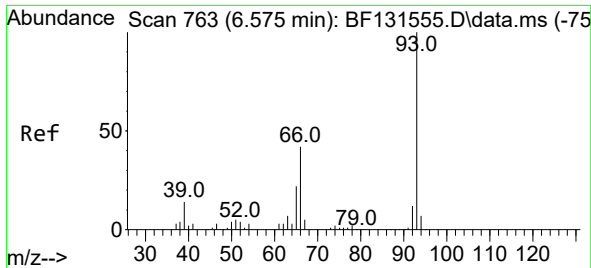
Tgt Ion:152 Resp: 47988  
 Ion Ratio Lower Upper  
 152 100  
 150 145.0 116.7 175.1  
 115 64.2 54.6 82.0



#5  
 2-Fluorophenol  
 Concen: 11.989 ng  
 RT: 5.516 min Scan# 583  
 Delta R.T. 0.006 min  
 Lab File: BF131602.D  
 Acq: 12 Dec 2022 20:15

Tgt Ion:112 Resp: 34485  
 Ion Ratio Lower Upper  
 112 100  
 64 65.3 54.5 81.7  
 63 33.5 31.9 47.9



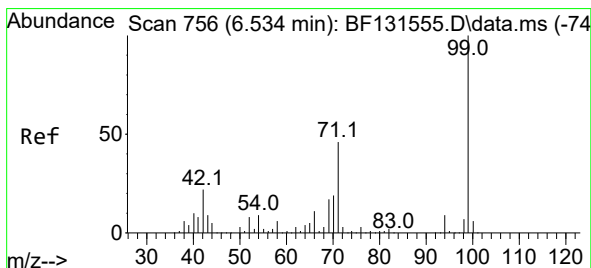
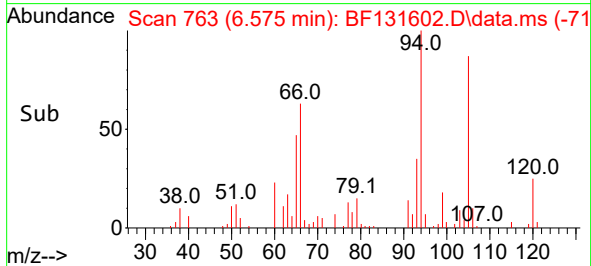
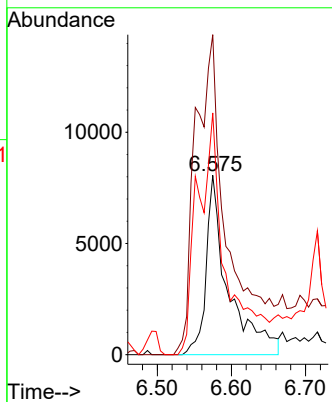
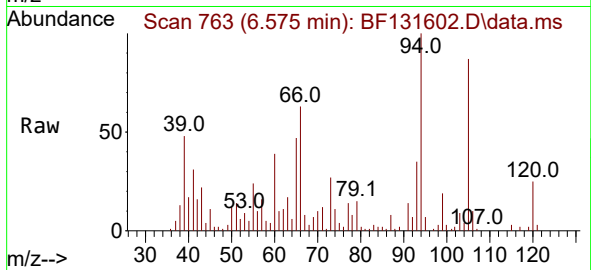


#6  
 Aniline  
 Concen: 3.712 ng  
 RT: 6.575 min Scan# 70  
 Delta R.T. 0.012 min  
 Lab File: BF131602.D  
 Acq: 12 Dec 2022 20:15

Instrument :  
 BNA\_F  
 ClientSampleId :  
 FMC-TOTE-1207RE

Tgt Ion: 93 Resp: 16733

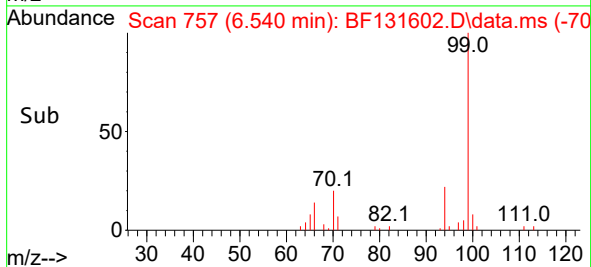
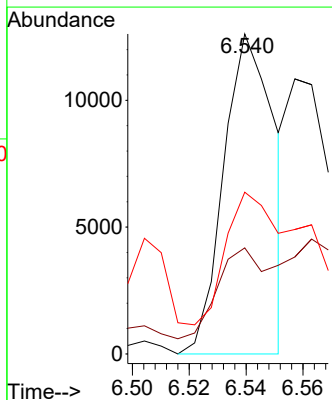
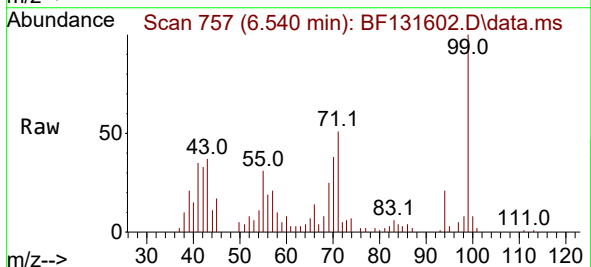
Ion	Ratio	Lower	Upper
93	100		
66	178.5	34.6	51.8#
65	134.8	17.7	26.5#

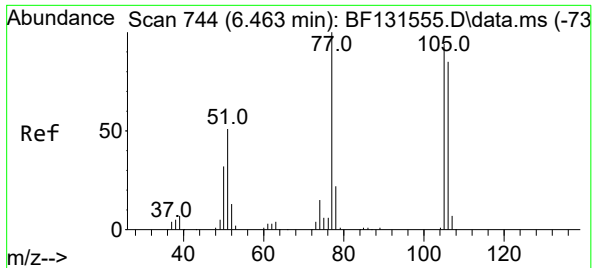


#7  
 Phenol-d6  
 Concen: 4.170 ng  
 RT: 6.540 min Scan# 757  
 Delta R.T. 0.012 min  
 Lab File: BF131602.D  
 Acq: 12 Dec 2022 20:15

Tgt Ion: 99 Resp: 15719

Ion	Ratio	Lower	Upper
99	100		
42	33.1	17.9	26.9#
71	50.6	37.2	55.8



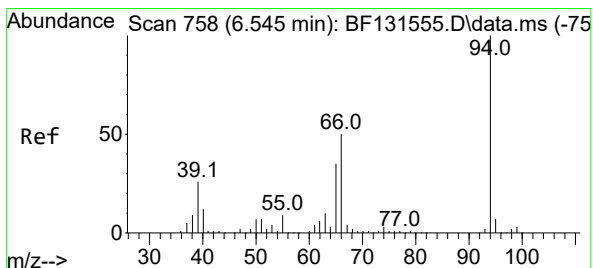
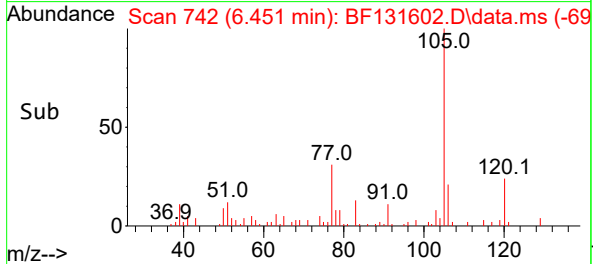
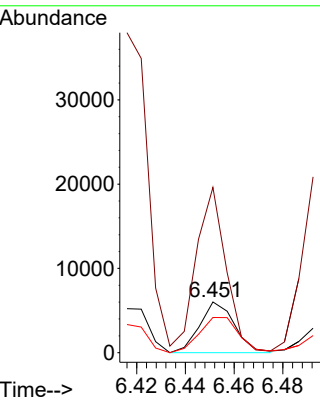
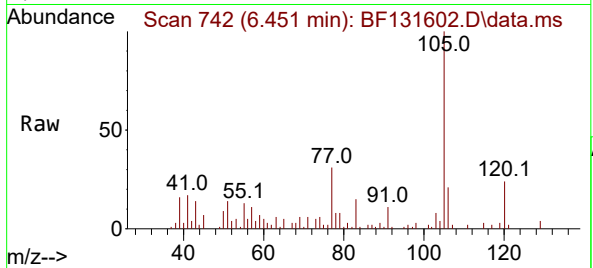


#9  
Benzaldehyde  
Concen: 2.323 ng  
RT: 6.451 min Scan# 744  
Delta R.T. 0.006 min  
Lab File: BF131602.D  
Acq: 12 Dec 2022 20:15

Instrument : BNA\_F  
ClientSampleId : FMC-TOTE-1207RE

Tgt Ion: 77 Resp: 5998

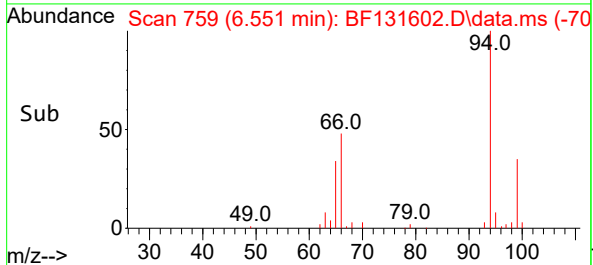
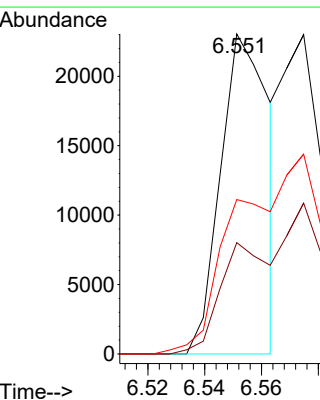
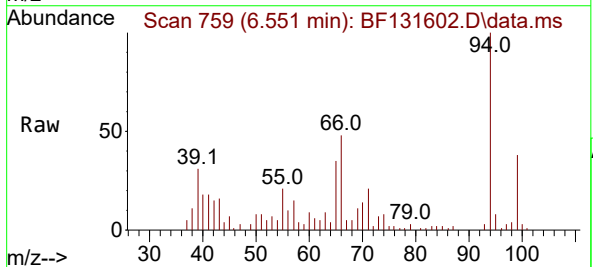
Ion	Ratio	Lower	Upper
77	100		
105	325.4	73.8	113.8
106	69.2	65.2	105.2

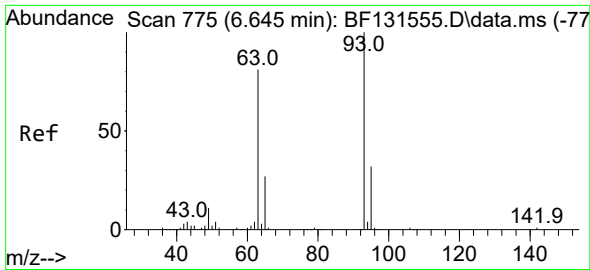


#10  
Phenol  
Concen: 6.512 ng  
RT: 6.551 min Scan# 759  
Delta R.T. 0.006 min  
Lab File: BF131602.D  
Acq: 12 Dec 2022 20:15

Tgt Ion: 94 Resp: 27380

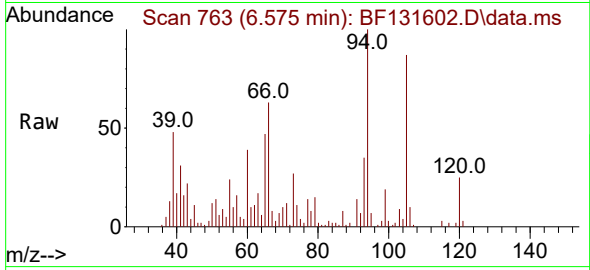
Ion	Ratio	Lower	Upper
94	100		
65	34.8	14.8	54.8
66	48.2	30.8	70.8



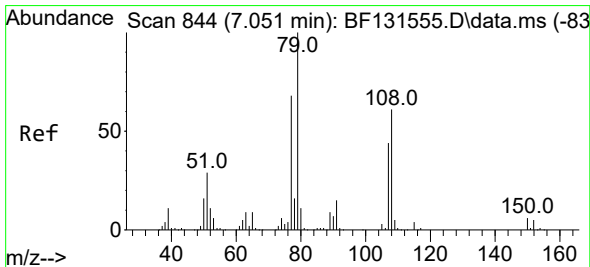
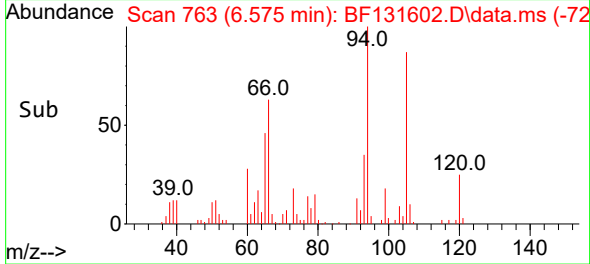
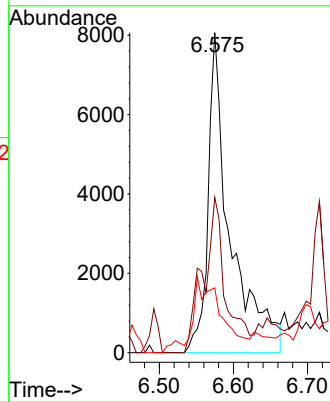


#11  
 bis(2-Chloroethyl)ether  
 Concen: 5.309 ng  
 RT: 6.575 min Scan# 775  
 Delta R.T. -0.059 min  
 Lab File: BF131602.D  
 Acq: 12 Dec 2022 20:15

Instrument : BNA\_F  
 ClientSampleId : FMC-TOTE-1207RE

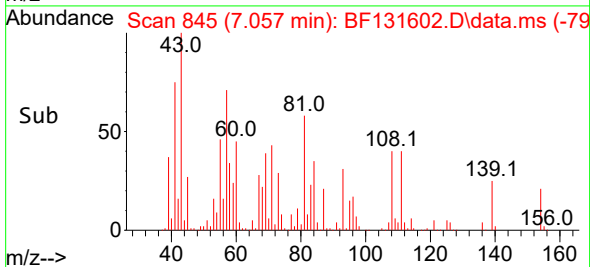
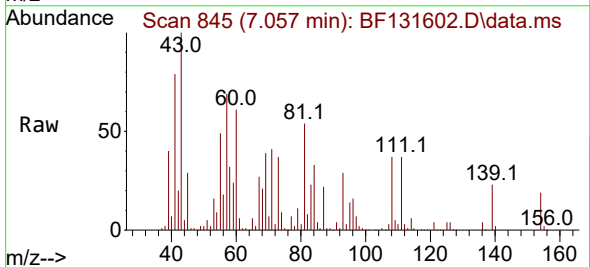
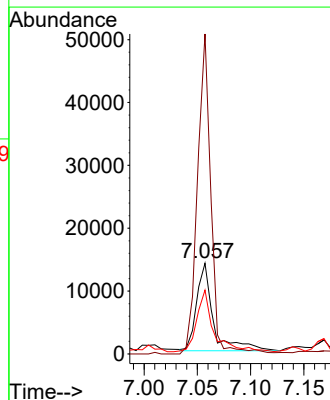


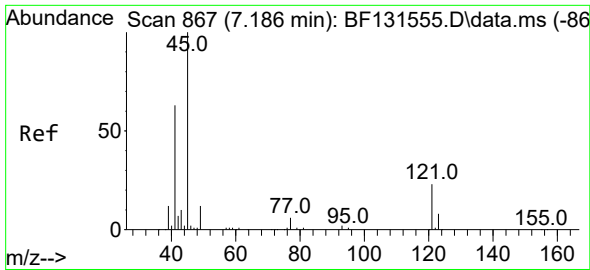
Tgt Ion: 93 Resp: 16733  
 Ion Ratio Lower Upper  
 93 100  
 63 48.5 60.4 100.4#  
 95 20.2 12.3 52.3



#15  
 Benzyl Alcohol  
 Concen: 4.447 ng  
 RT: 7.057 min Scan# 845  
 Delta R.T. 0.018 min  
 Lab File: BF131602.D  
 Acq: 12 Dec 2022 20:15

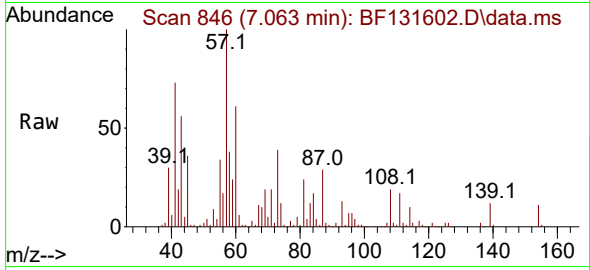
Tgt Ion: 79 Resp: 15366  
 Ion Ratio Lower Upper  
 79 100  
 108 353.0 49.2 73.8#  
 77 70.4 54.5 81.7



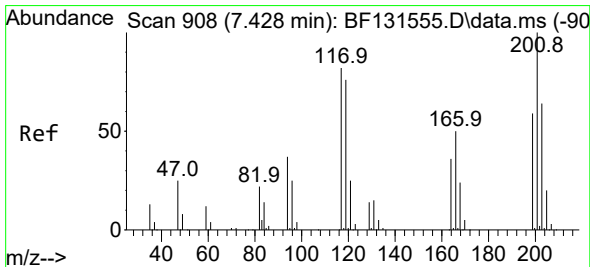
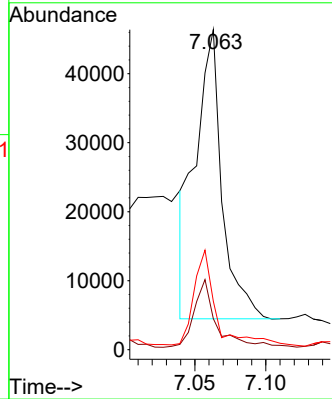
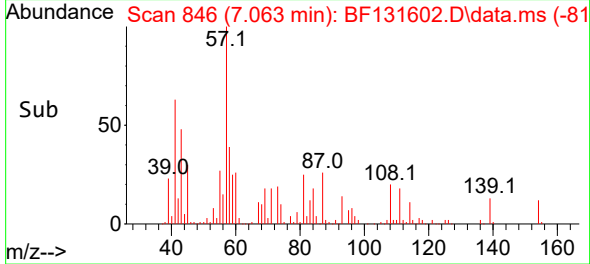


#16  
 2,2'-oxybis(1-Chloropropane)  
 Concen: 13.488 ng  
 RT: 7.063 min Scan# 846  
 Delta R.T. -0.106 min  
 Lab File: BF131602.D  
 Acq: 12 Dec 2022 20:15

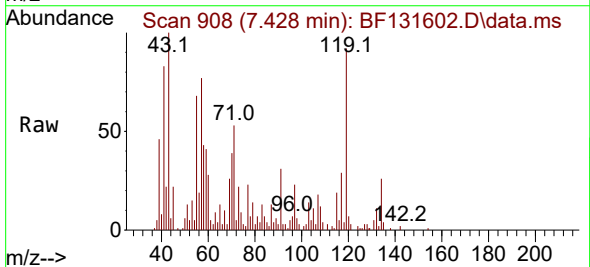
Instrument :  
 BNA\_F  
 ClientSampleId :  
 FMC-TOTE-1207RE



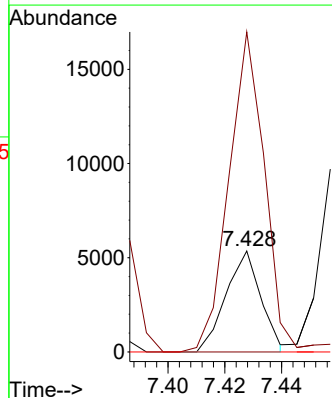
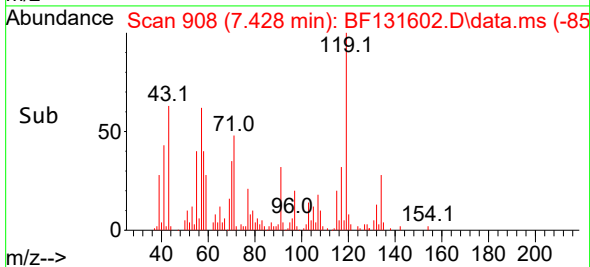
Tgt Ion	Resp	Lower	Upper
45	54913	100	
77	9.7	0.0	37.7
79	15.1	0.0	33.6

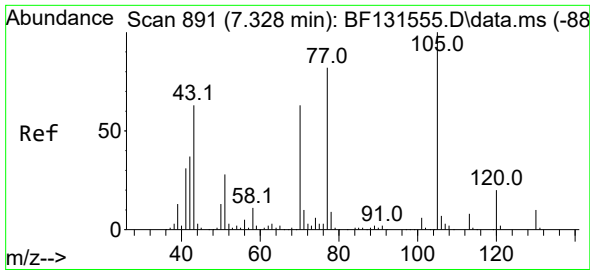


#18  
 Hexachloroethane  
 Concen: 3.198 ng  
 RT: 7.428 min Scan# 908  
 Delta R.T. 0.018 min  
 Lab File: BF131602.D  
 Acq: 12 Dec 2022 20:15



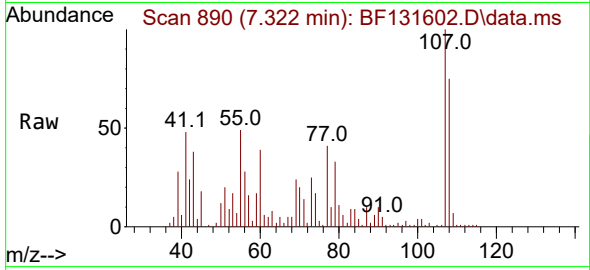
Tgt Ion	Resp	Lower	Upper
117	4599	100	
119	317.1	75.0	112.4#
201	0.0	98.0	147.0#



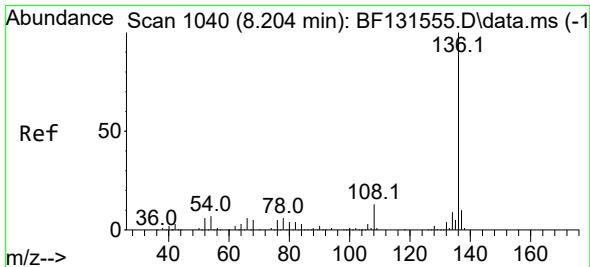
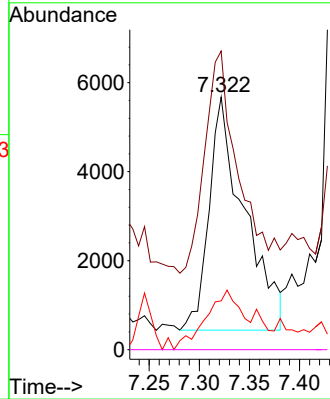
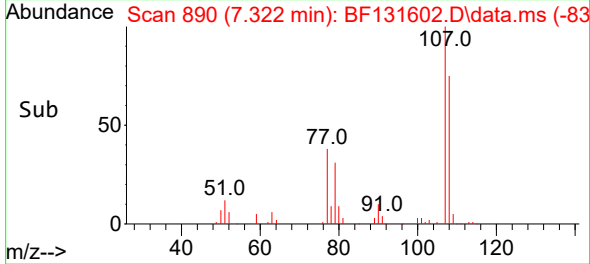


#19  
 n-Nitroso-di-n-propylamine  
 Concen: 4.544 ng  
 RT: 7.322 min Scan# 891  
 Delta R.T. 0.006 min  
 Lab File: BF131602.D  
 Acq: 12 Dec 2022 20:15

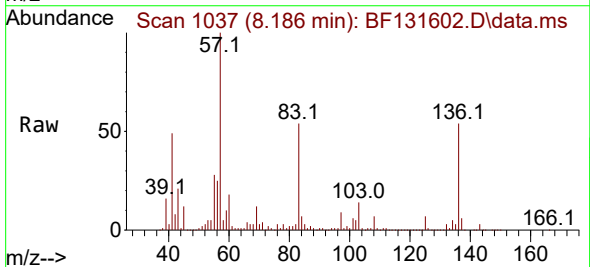
Instrument : BNA\_F  
 ClientSampleId : FMC-TOTE-1207RE



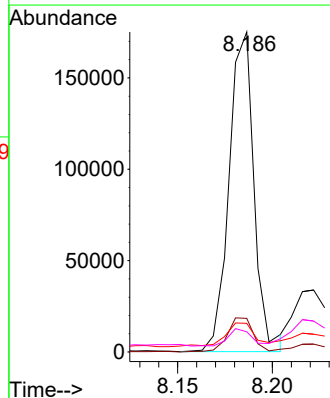
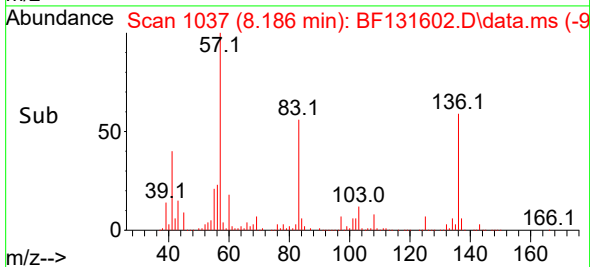
Tgt Ion: 70 Resp: 12844  
 Ion Ratio Lower Upper  
 70 100  
 42 118.2 46.4 69.6#  
 101 19.3 7.2 10.8#  
 130 0.0 13.3 19.9#



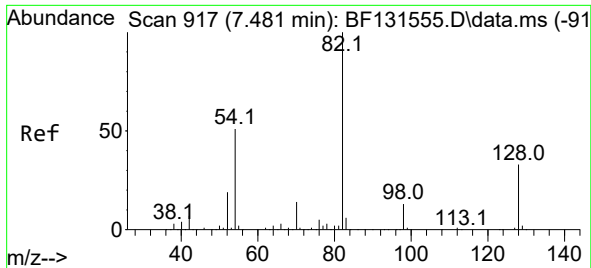
#21  
 Naphthalene-d8  
 Concen: 20.000 ng  
 RT: 8.186 min Scan# 1037  
 Delta R.T. 0.000 min  
 Lab File: BF131602.D  
 Acq: 12 Dec 2022 20:15



Tgt Ion:136 Resp: 160403  
 Ion Ratio Lower Upper  
 136 100  
 137 10.5 8.1 12.1  
 54 8.9 6.0 9.0  
 68 6.3 3.8 5.8#



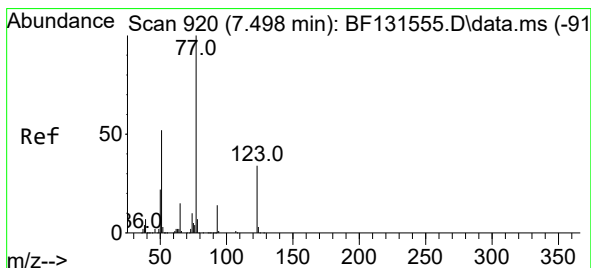
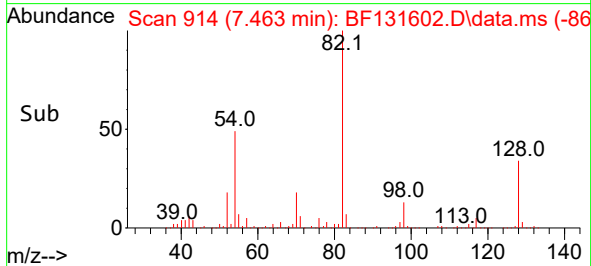
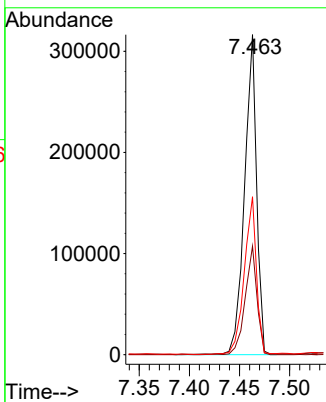
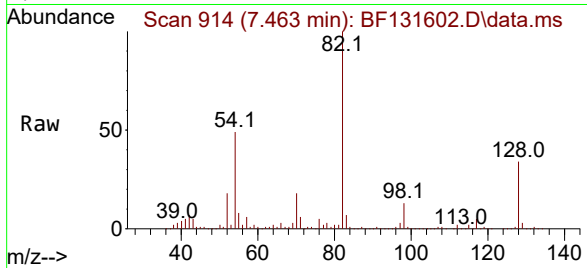




#23  
 Nitrobenzene-d5  
 Concen: 62.818 ng  
 RT: 7.463 min Scan# 914  
 Delta R.T. -0.006 min  
 Lab File: BF131602.D  
 Acq: 12 Dec 2022 20:15

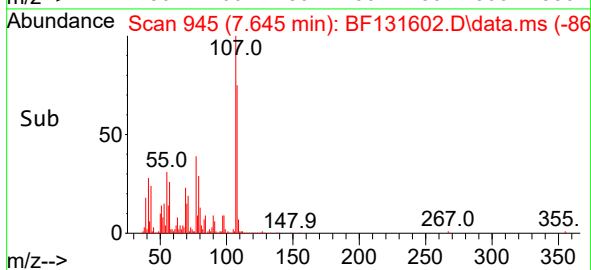
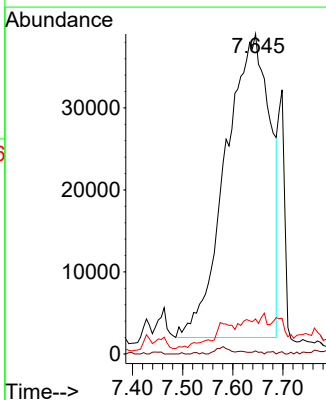
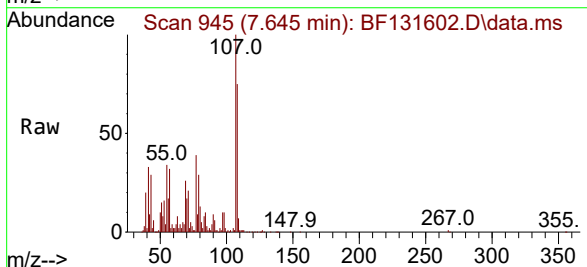
Instrument :  
 BNA\_F  
 ClientSampleId :  
 FMC-TOTE-1207RE

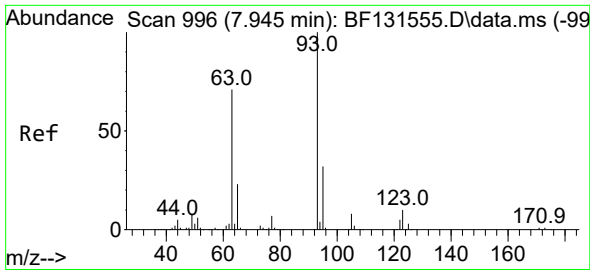
Tgt Ion	Resp	Lower	Upper
82	266518		
128	33.9	26.1	39.1
54	49.3	40.6	60.8



#24  
 Nitrobenzene  
 Concen: 53.159 ng  
 RT: 7.645 min Scan# 945  
 Delta R.T. 0.159 min  
 Lab File: BF131602.D  
 Acq: 12 Dec 2022 20:15

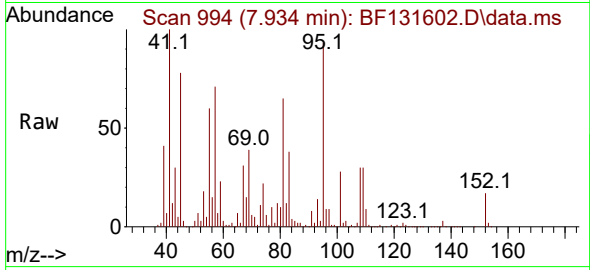
Tgt Ion	Resp	Lower	Upper
77	227477		
123	0.9	27.1	40.7#
65	11.0	11.9	17.9#



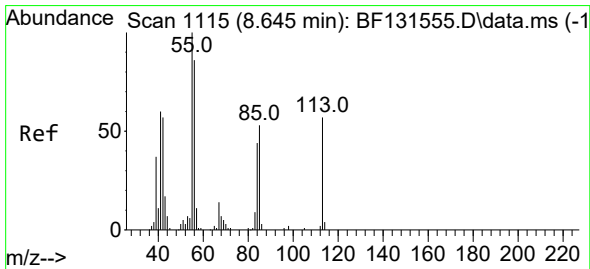
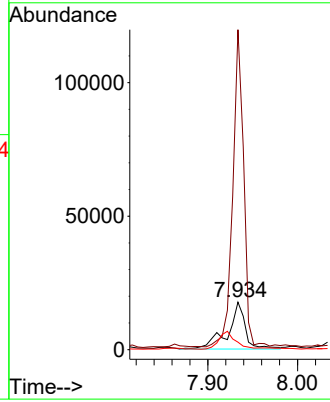
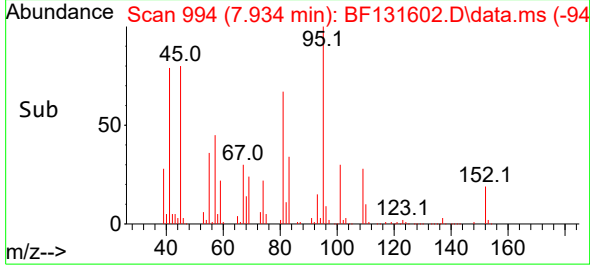


#28  
 bis(2-Chloroethoxy)methane  
 Concen: 6.766 ng  
 RT: 7.934 min Scan# 994  
 Delta R.T. -0.000 min  
 Lab File: BF131602.D  
 Acq: 12 Dec 2022 20:15

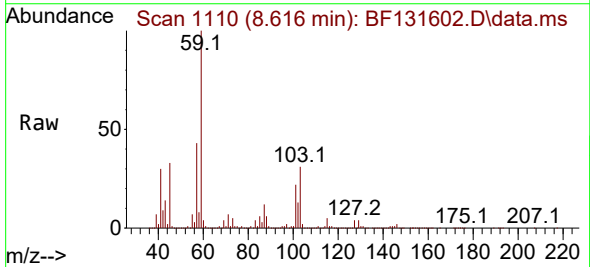
Instrument : BNA\_F  
 ClientSampleId : FMC-TOTE-1207RE



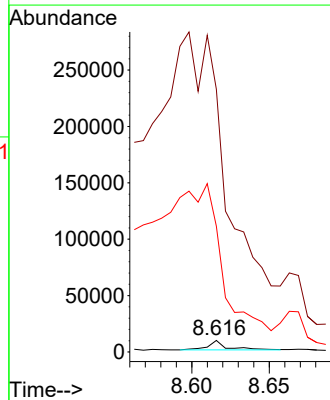
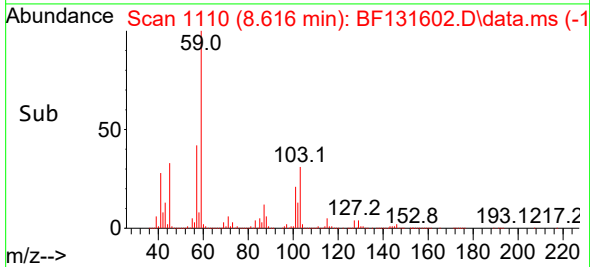
Tgt Ion: 93 Resp: 23921  
 Ion Ratio Lower Upper  
 93 100  
 95 672.7 25.8 38.6#  
 123 15.7 8.1 12.1#

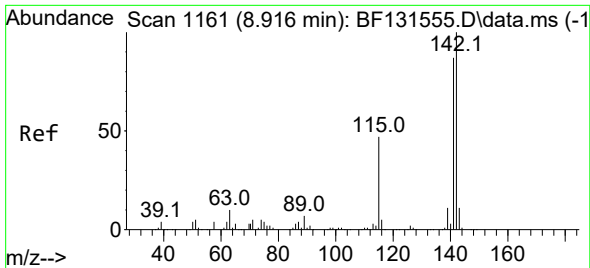


#35  
 Caprolactam  
 Concen: 9.692 ng  
 RT: 8.616 min Scan# 1110  
 Delta R.T. -0.029 min  
 Lab File: BF131602.D  
 Acq: 12 Dec 2022 20:15



Tgt Ion: 113 Resp: 6934  
 Ion Ratio Lower Upper  
 113 100  
 55 2275.1 155.8 195.8#  
 56 1089.4 131.7 171.7#

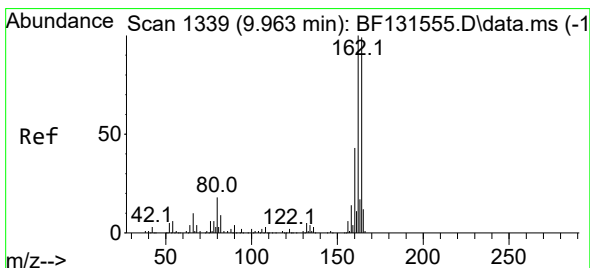
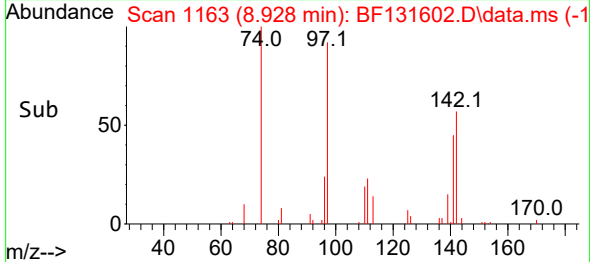
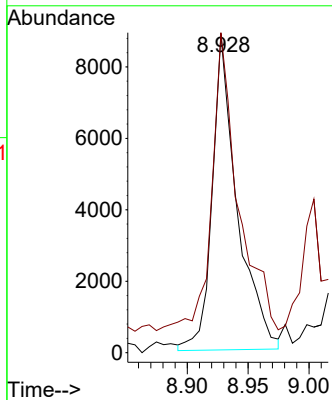
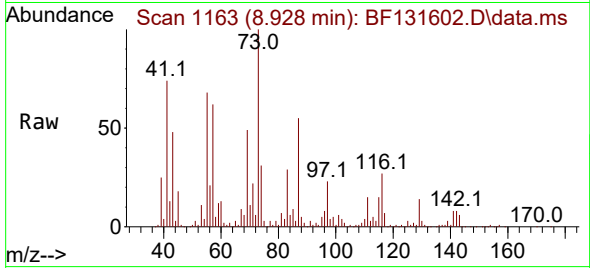




#37  
 2-Methylnaphthalene  
 Concen: 2.043 ng  
 RT: 8.928 min Scan# 1163  
 Delta R.T. 0.024 min  
 Lab File: BF131602.D  
 Acq: 12 Dec 2022 20:15

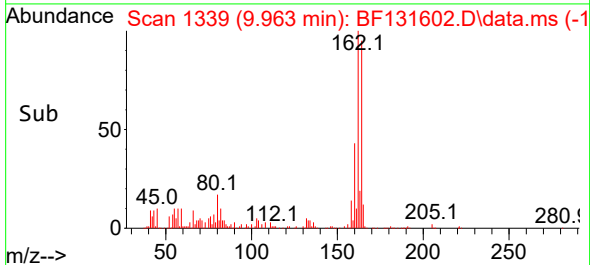
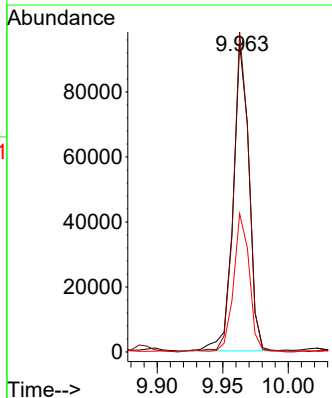
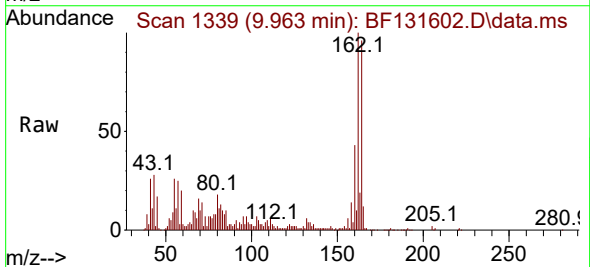
Instrument :  
 BNA\_F  
 ClientSampleId :  
 FMC-TOTE-1207RE

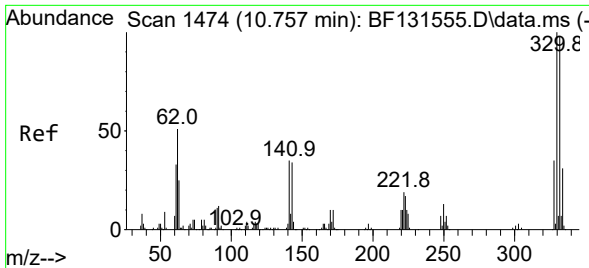
Tgt Ion:142 Resp: 12623  
 Ion Ratio Lower Upper  
 142 100  
 141 100.5 69.7 104.5



#39  
 Acenaphthene-d10  
 Concen: 20.000 ng  
 RT: 9.963 min Scan# 1339  
 Delta R.T. 0.012 min  
 Lab File: BF131602.D  
 Acq: 12 Dec 2022 20:15

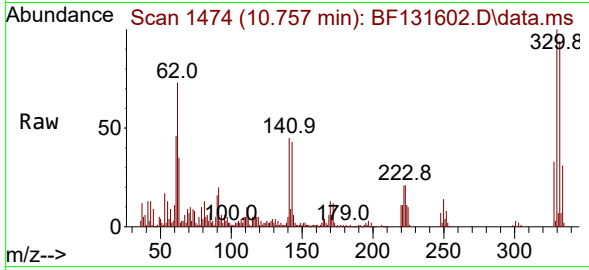
Tgt Ion:164 Resp: 79630  
 Ion Ratio Lower Upper  
 164 100  
 162 103.6 81.0 121.6  
 160 44.8 35.0 52.6



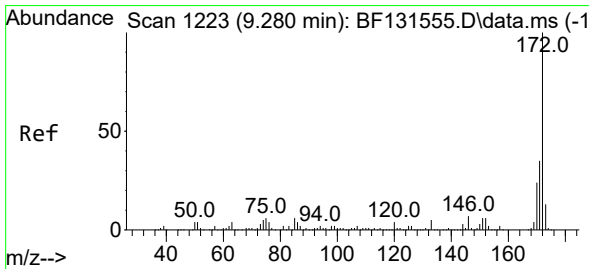
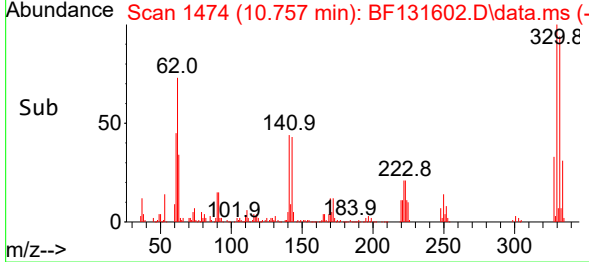
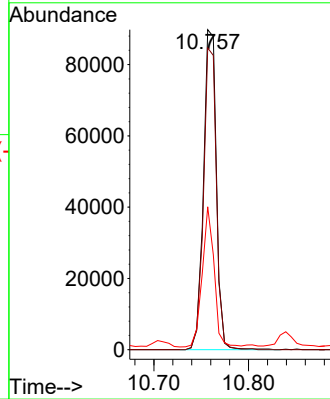


#42  
 2,4,6-Tribromophenol  
 Concen: 96.359 ng  
 RT: 10.757 min Scan# 1474  
 Delta R.T. 0.006 min  
 Lab File: BF131602.D  
 Acq: 12 Dec 2022 20:15

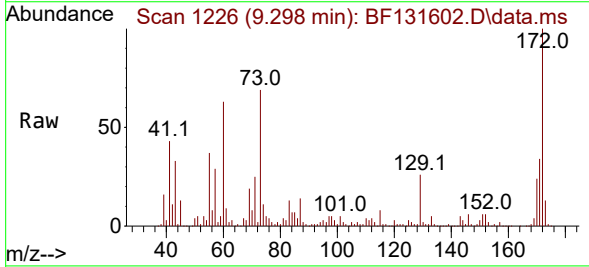
Instrument :  
 BNA\_F  
 ClientSampleId :  
 FMC-TOTE-1207RE



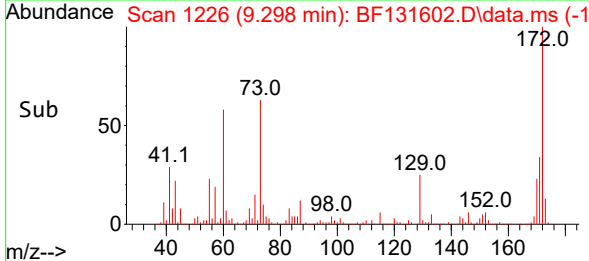
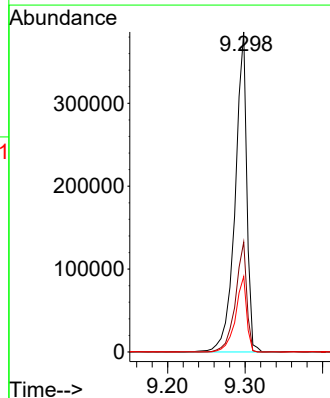
Tgt Ion:330 Resp: 85250  
 Ion Ratio Lower Upper  
 330 100  
 332 94.4 78.3 117.5  
 141 40.4 32.6 49.0

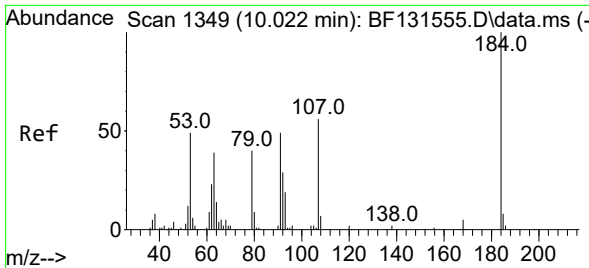


#45  
 2-Fluorobiphenyl  
 Concen: 63.872 ng  
 RT: 9.298 min Scan# 1226  
 Delta R.T. 0.029 min  
 Lab File: BF131602.D  
 Acq: 12 Dec 2022 20:15



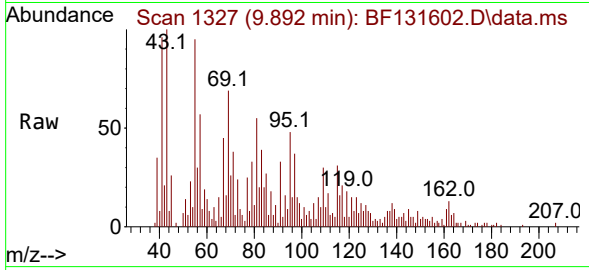
Tgt Ion:172 Resp: 403382  
 Ion Ratio Lower Upper  
 172 100  
 171 34.3 28.3 42.5  
 170 23.6 19.3 28.9



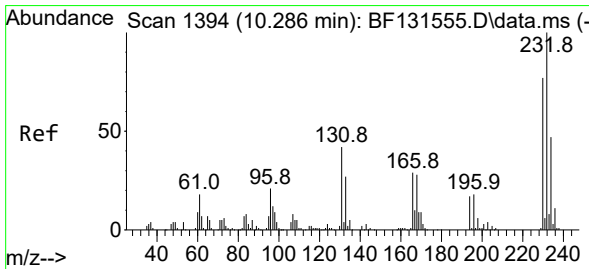
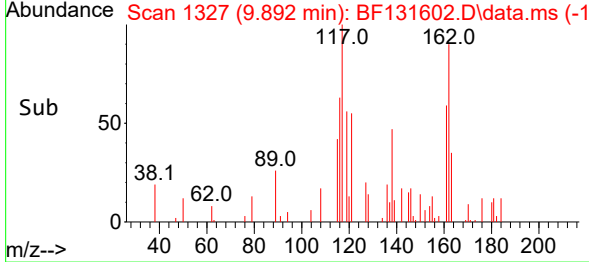
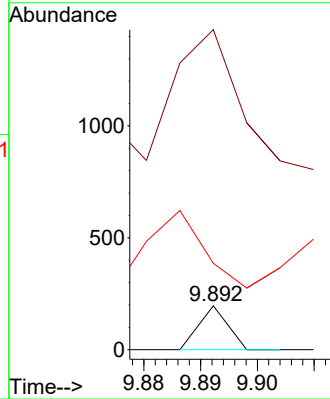


#54  
 2,4-Dinitrophenol  
 Concen: 4.187 ng  
 RT: 9.892 min Scan# 11  
 Delta R.T. -0.124 min  
 Lab File: BF131602.D  
 Acq: 12 Dec 2022 20:15

Instrument :  
 BNA\_F  
 ClientSampleId :  
 FMC-TOTE-1207RE

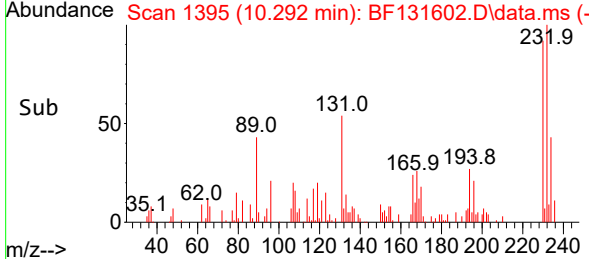
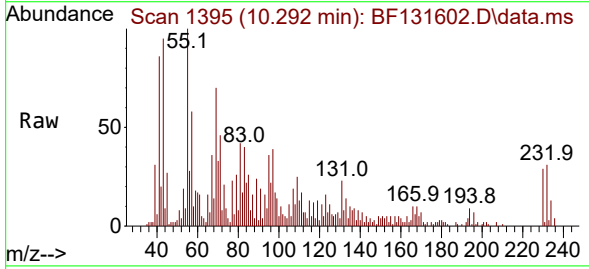
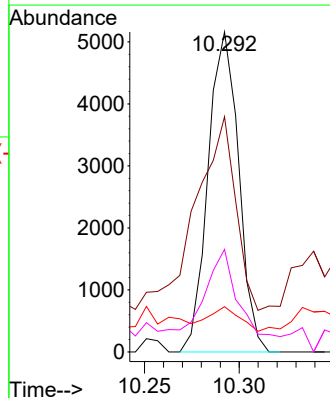


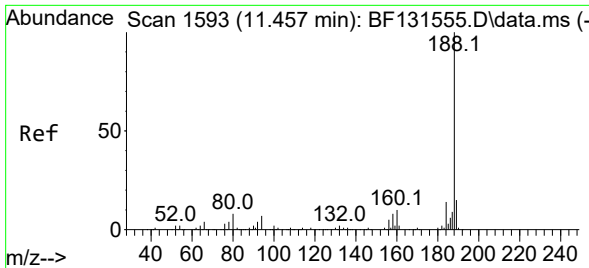
Tgt Ion:184 Resp: 69  
 Ion Ratio Lower Upper  
 184 100  
 63 729.6 60.7 91.1#  
 154 196.9 59.0 88.6#



#59  
 2,3,4,6-Tetrachlorophenol  
 Concen: 3.495 ng  
 RT: 10.292 min Scan# 1395  
 Delta R.T. 0.012 min  
 Lab File: BF131602.D  
 Acq: 12 Dec 2022 20:15

Tgt Ion:232 Resp: 5804  
 Ion Ratio Lower Upper  
 232 100  
 131 79.2 31.0 46.6#  
 130 7.8 1.8 2.8#  
 166 26.2 18.8 28.2



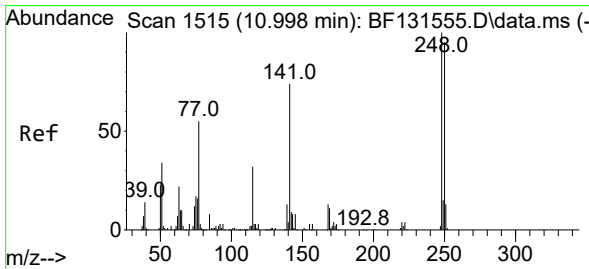
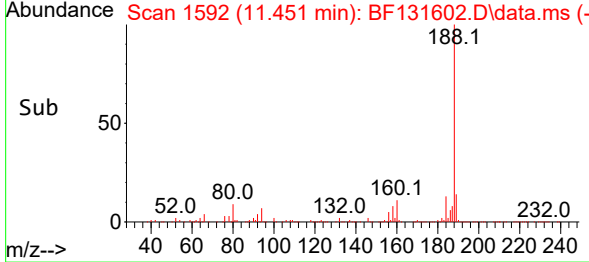
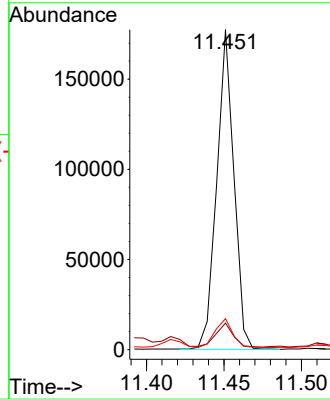
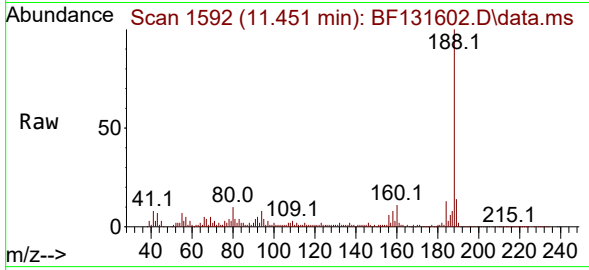


#64  
 Phenanthrene-d10  
 Concen: 20.000 ng  
 RT: 11.451 min Scan# 11  
 Delta R.T. -0.000 min  
 Lab File: BF131602.D  
 Acq: 12 Dec 2022 20:15

Instrument : BNA\_F  
 ClientSampleId : FMC-TOTE-1207RE

Tgt Ion:188 Resp: 136156

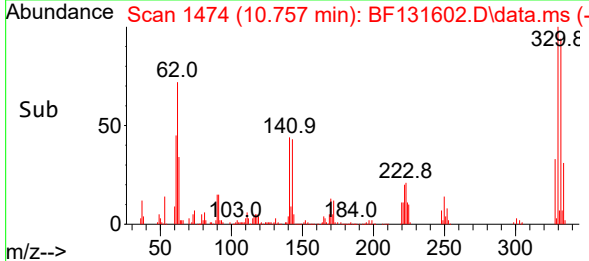
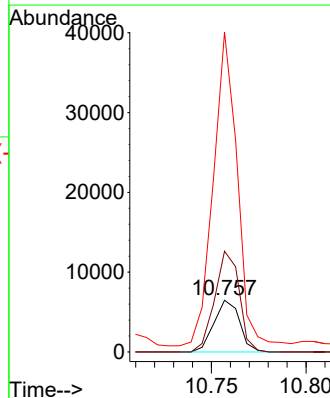
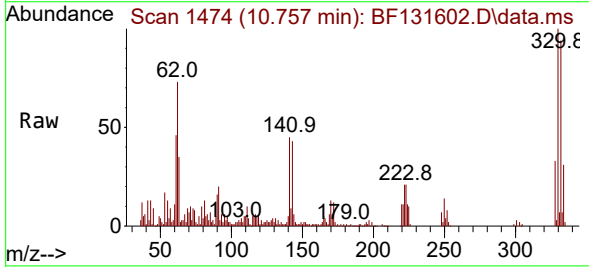
Ion	Ratio	Lower	Upper
188	100		
94	8.3	5.5	8.3#
80	9.7	6.6	10.0

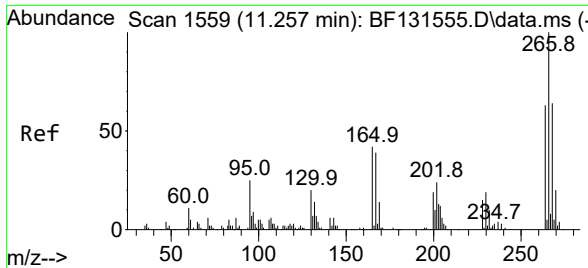


#67  
 4-Bromophenyl-phenylether  
 Concen: 3.475 ng  
 RT: 10.757 min Scan# 1474  
 Delta R.T. -0.235 min  
 Lab File: BF131602.D  
 Acq: 12 Dec 2022 20:15

Tgt Ion:248 Resp: 6086

Ion	Ratio	Lower	Upper
248	100		
250	195.2	76.2	114.2#
141	619.4	59.5	89.3#

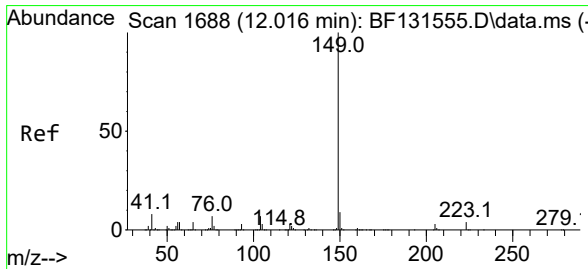
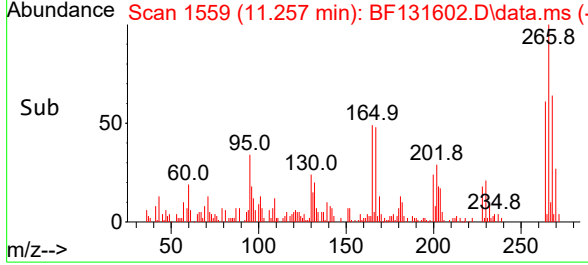
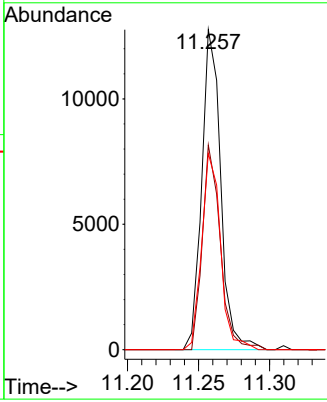
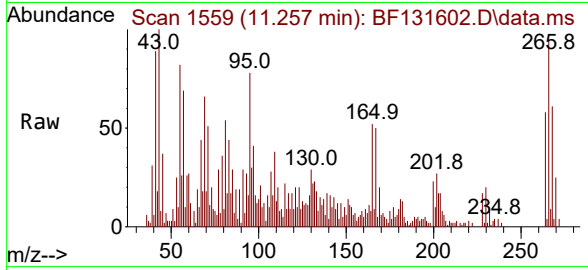




#70  
 Pentachlorophenol  
 Concen: 12.155 ng  
 RT: 11.257 min Scan# 1559  
 Delta R.T. 0.006 min  
 Lab File: BF131602.D  
 Acq: 12 Dec 2022 20:15

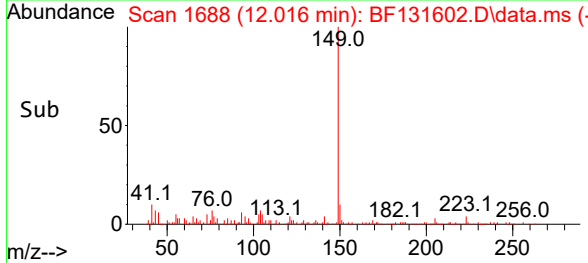
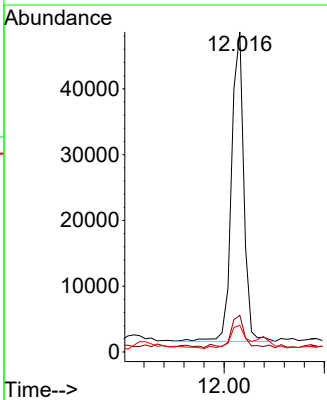
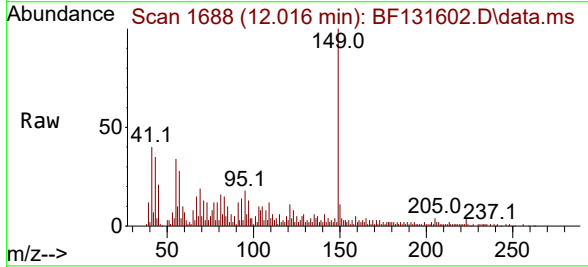
Instrument : BNA\_F  
 ClientSampleId : FMC-TOTE-1207RE

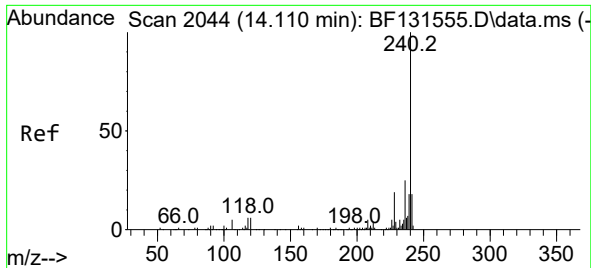
Tgt Ion	Resp	Lower	Upper
266	11855		
266	100		
268	68.4	51.5	77.3
264	61.3	50.7	76.1



#74  
 Di-n-butylphthalate  
 Concen: 5.434 ng  
 RT: 12.016 min Scan# 1688  
 Delta R.T. 0.006 min  
 Lab File: BF131602.D  
 Acq: 12 Dec 2022 20:15

Tgt Ion	Resp	Lower	Upper
149	40176		
149	100		
150	11.4	7.2	10.8#
104	8.4	5.2	7.8#

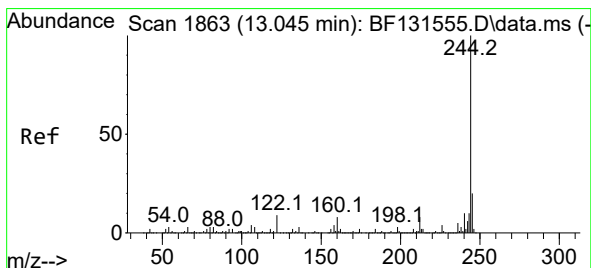
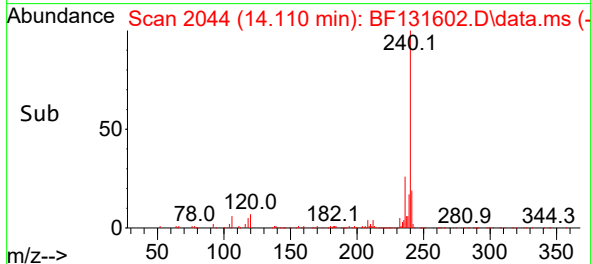
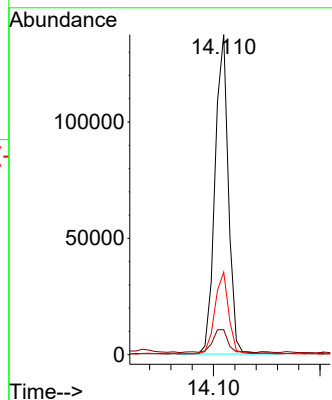
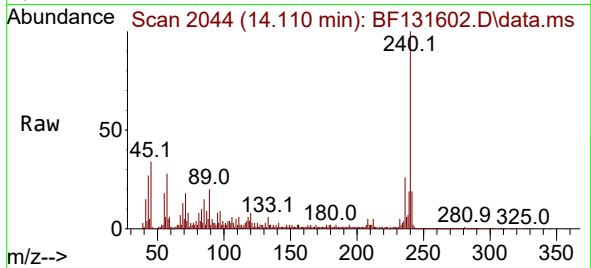




#76  
 Chrysene-d12  
 Concen: 20.000 ng  
 RT: 14.110 min Scan# 2044  
 Delta R.T. 0.006 min  
 Lab File: BF131602.D  
 Acq: 12 Dec 2022 20:15

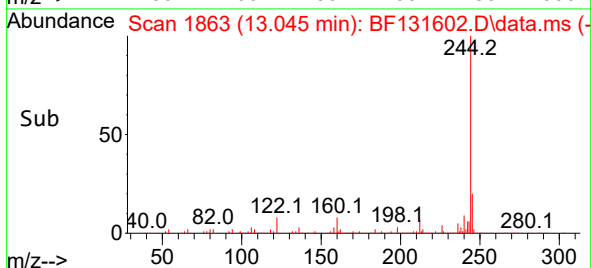
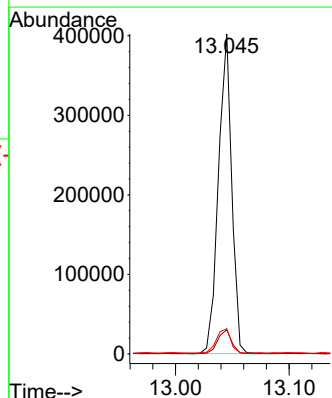
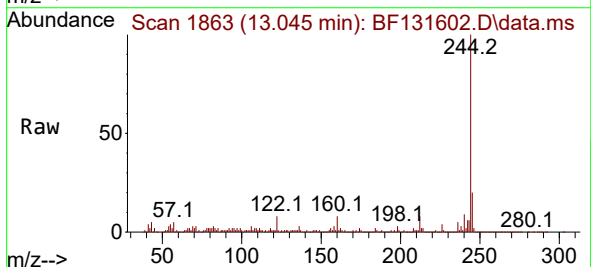
Instrument :  
 BNA\_F  
 ClientSampleId :  
 FMC-TOTE-1207RE

Tgt Ion:240 Resp: 120158  
 Ion Ratio Lower Upper  
 240 100  
 120 7.8 4.6 7.0#  
 236 25.8 20.2 30.2

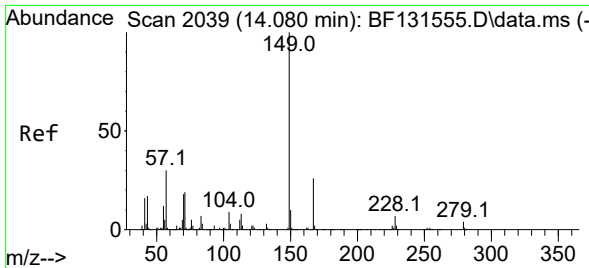


#79  
 Terphenyl-d14  
 Concen: 37.341 ng  
 RT: 13.045 min Scan# 1863  
 Delta R.T. -0.000 min  
 Lab File: BF131602.D  
 Acq: 12 Dec 2022 20:15

Tgt Ion:244 Resp: 327173  
 Ion Ratio Lower Upper  
 244 100  
 212 7.6 6.5 9.7  
 122 7.9 7.1 10.7

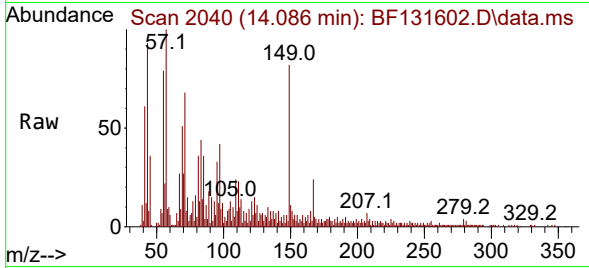






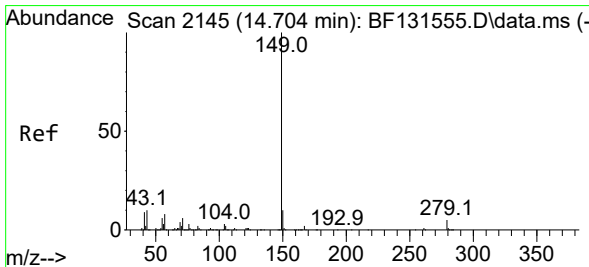
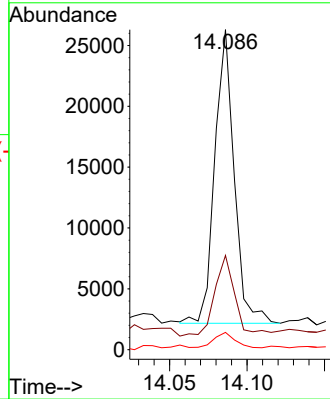
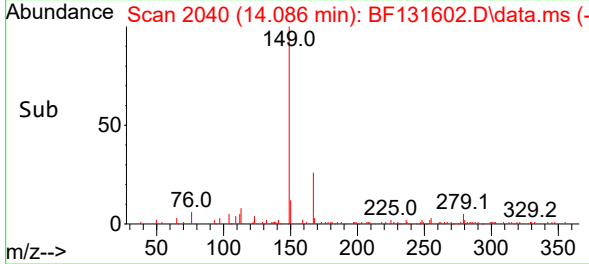
#84  
 Bis(2-ethylhexyl)phthalate  
 Concen: 7.240 ng  
 RT: 14.086 min Scan# 2039  
 Delta R.T. 0.006 min  
 Lab File: BF131602.D  
 Acq: 12 Dec 2022 20:15

Instrument : BNA\_F  
 ClientSampleId : FMC-TOTE-1207RE

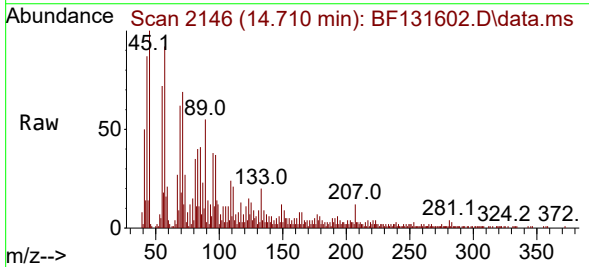


Tgt Ion:149 Resp: 20980

Ion	Ratio	Lower	Upper
149	100		
167	29.4	20.8	31.2
279	5.4	3.3	4.9

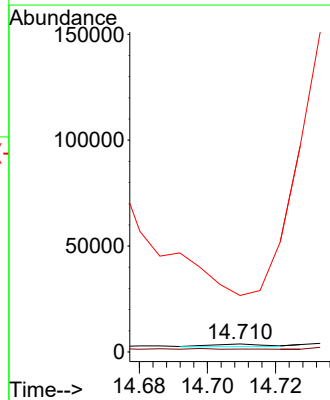
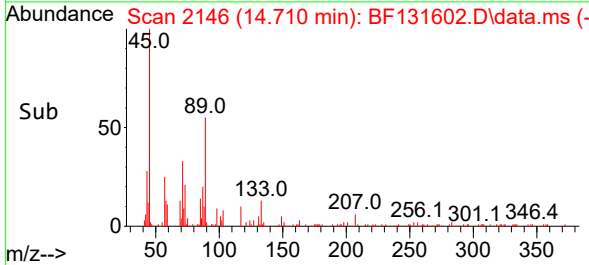


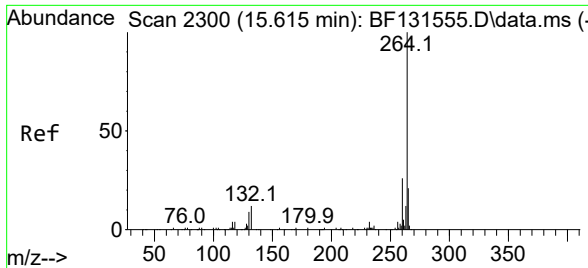
#85  
 Di-n-octyl phthalate  
 Concen: 5.376 ng  
 RT: 14.710 min Scan# 2146  
 Delta R.T. 0.012 min  
 Lab File: BF131602.D  
 Acq: 12 Dec 2022 20:15



Tgt Ion:149 Resp: 1348

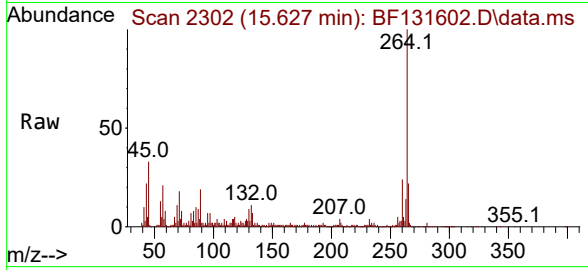
Ion	Ratio	Lower	Upper
149	100		
167	0.0	1.2	1.8
43	0.0	8.6	13.0





#86  
 Perylene-d12  
 Concen: 20.000 ng  
 RT: 15.627 min Scan# 21  
 Delta R.T. 0.012 min  
 Lab File: BF131602.D  
 Acq: 12 Dec 2022 20:15

Instrument :  
 BNA\_F  
 ClientSampleId :  
 FMC-TOTE-1207RE



Tgt Ion:264 Resp: 131177

Ion	Ratio	Lower	Upper
264	100		
260	24.1	20.6	30.8
265	22.1	16.8	25.2

