

Data Path : Z:\HPCHEM1\BNA F\DATA\BF121315\
 Data File : BF083740.D
 Acq On : 13 Dec 2015 20:20
 Operator : UM/IZ
 Sample : G4648-21
 Misc :
 ALS Vial : 32 Sample Multiplier: 1

Instrument :
 BNA_F
 ClientSampleId :
 SB-08(16-18)

Quant Time: Dec 14 03:24:26 2015
 Quant Method : Z:\HPCHEM1\BNA F\METHODS\8270-BF121315.M
 Quant Title : ASP BNA STANDARDS FOR 5 POINT CALIBRATION
 QLast Update : Mon Dec 14 01:30:12 2015
 Response via : Initial Calibration

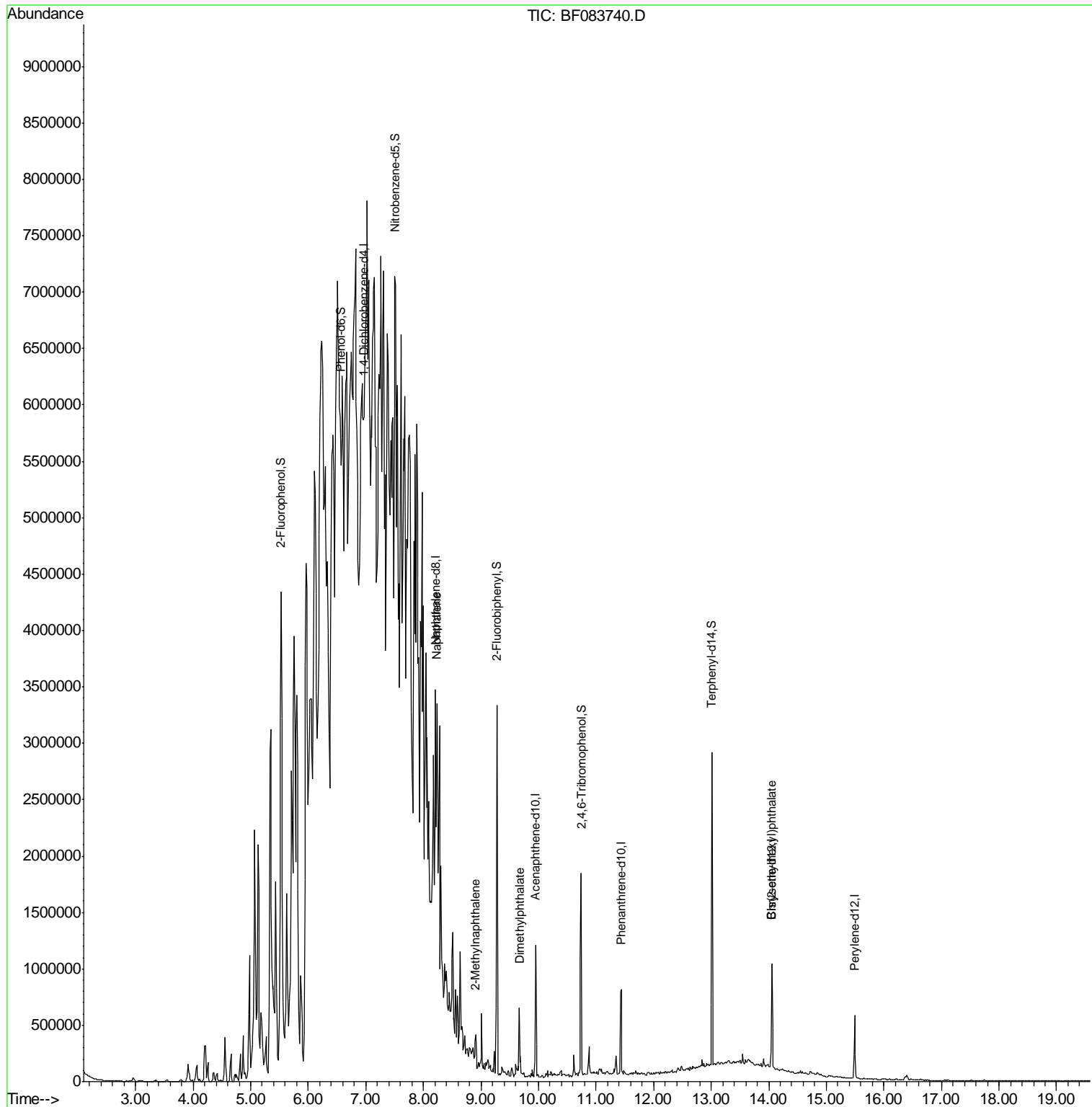
Internal Standards	R.T.	QIon	Response	Conc	Units	Dev(Min)
1) 1,4-Dichlorobenzene-d4	6.96	152	69164	20.00	ng	0.03
21) Naphthalene-d8	8.21	136	370143	20.00	ng	0.00
38) Acenaphthene-d10	9.95	164	224597	20.00	ng	-0.01
63) Phenanthrene-d10	11.44	188	407698	20.00	ng	-0.01
75) Chrysene-d12	14.05	240	296010	20.00	ng	-0.02
86) Perylene-d12	15.49	264	250055	20.00	ng	-0.01
System Monitoring Compounds						
5) 2-Fluorophenol	5.53	112	635963	148.34	ng	0.00
7) Phenol-d6	6.56	99	392011	72.20	ng	0.01
23) Nitrobenzene-d5	7.50	82	401670	60.71	ng	0.02
41) 2,4,6-Tribromophenol	10.74	330	256212	111.95	ng	-0.01
44) 2-Fluorobiphenyl	9.28	172	962021	57.12	ng	-0.01
78) Terphenyl-d14	13.01	244	881672	64.07	ng	-0.01
Target Compounds						
31) Naphthalene	8.24	128	619104	32.09	ng	# 93
37) 2-Methylnaphthalene	8.91	142	77265	6.38	ng	95
49) Dimethylphthalate	9.66	163	214956	12.28	ng	99
83) Bis(2-ethylhexyl)phthalate	14.05	149	54776	4.79	ng	100

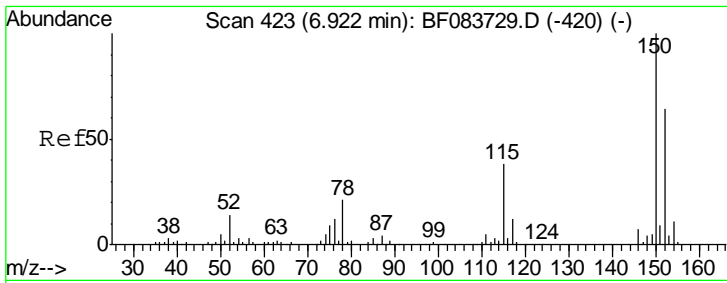
(#) = qualifier out of range (m) = manual integration (+) = signals summed

Data Path : Z:\HPCHEM1\BNA F\DATA\BF121315\
 Data File : BF083740.D
 Acq On : 13 Dec 2015 20:20
 Operator : UM/IZ
 Sample : G4648-21
 Misc :
 ALS Vial : 32 Sample Multiplier: 1

Instrument :
 BNA_F
 ClientSampleId :
 SB-08(16-18)

Quant Time: Dec 14 03:24:26 2015
 Quant Method : Z:\HPCHEM1\BNA F\METHODS\8270-BF121315.M
 Quant Title : ASP BNA STANDARDS FOR 5 POINT CALIBRATION
 QLast Update : Mon Dec 14 01:30:12 2015
 Response via : Initial Calibration

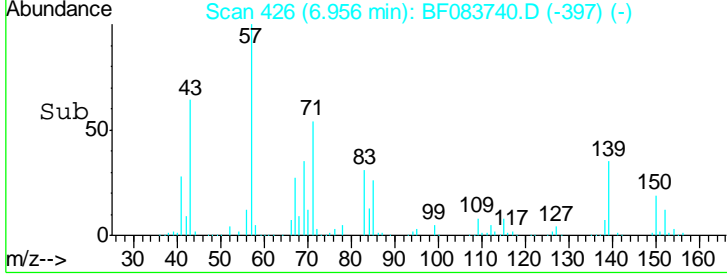
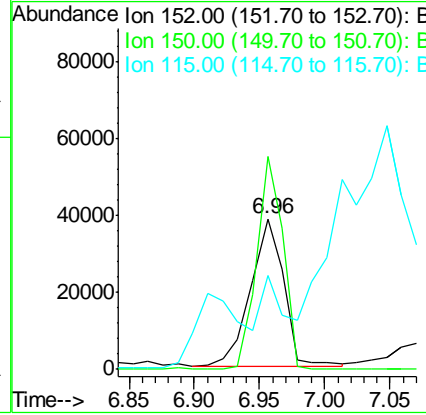
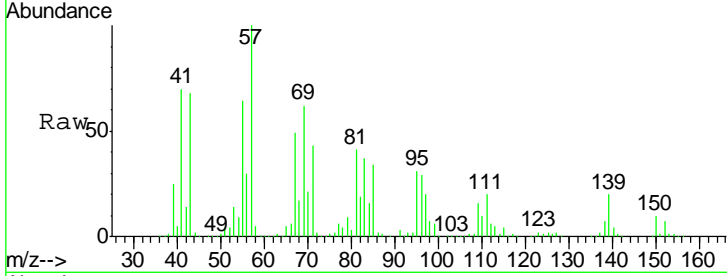




#1
 1,4-Dichlorobenzene-d4
 Concen: 20.00 ng
 RT: 6.96 min Scan# 426
 Delta R.T. 0.03 min
 Lab File: BF083740.D
 Acq: 13 Dec 2015 20:20

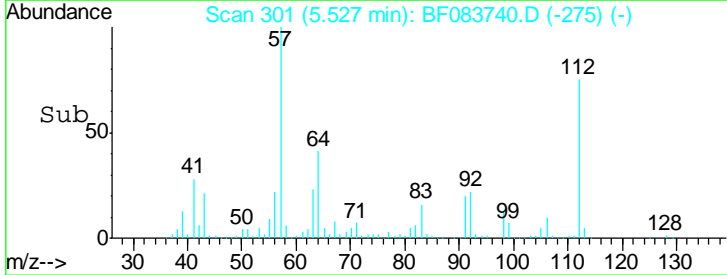
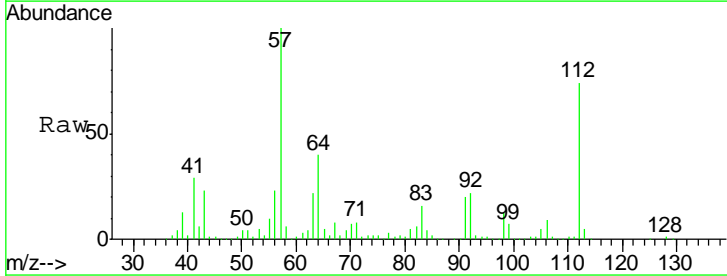
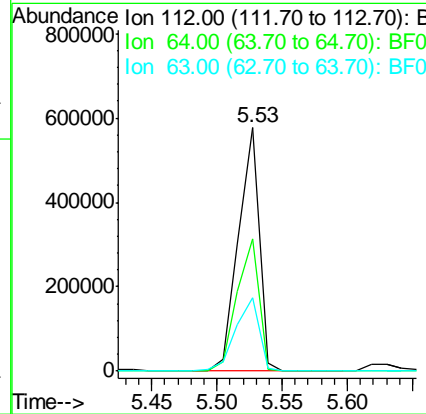
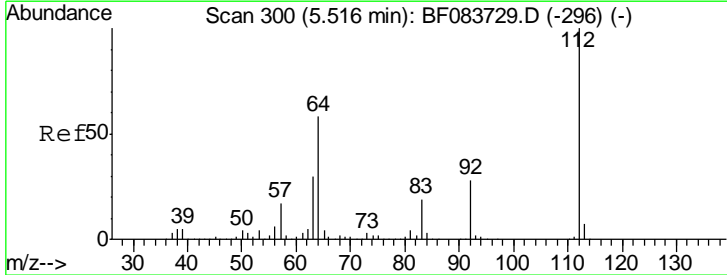
Instrument :
 BNA_F
ClientSampled :
 SB-08(16-18)

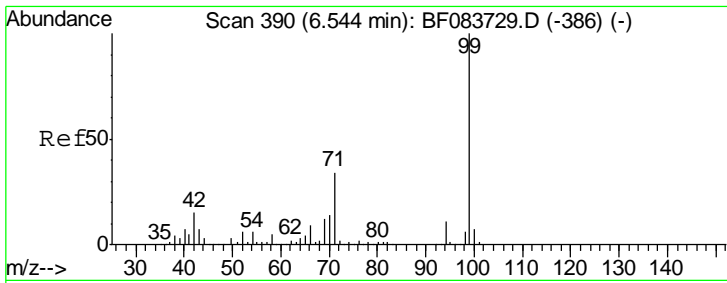
Tgt Ion	Resp	Lower	Upper
152	69164		
150	141.2	126.5	189.7
115	62.1	52.3	78.5



#5
 2-Fluorophenol
 Concen: 148.34 ng
 RT: 5.53 min Scan# 301
 Delta R.T. 0.00 min
 Lab File: BF083740.D
 Acq: 13 Dec 2015 20:20

Tgt Ion	Resp	Lower	Upper
112	635963		
64	54.3	50.5	75.7
63	30.1	25.8	38.6

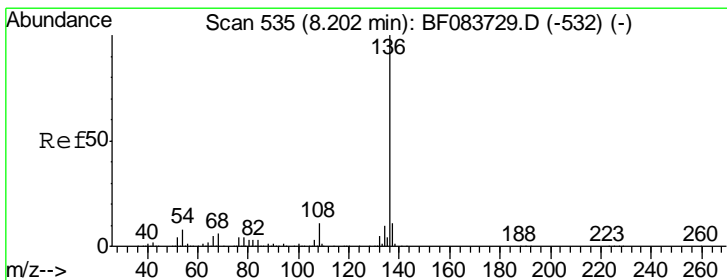
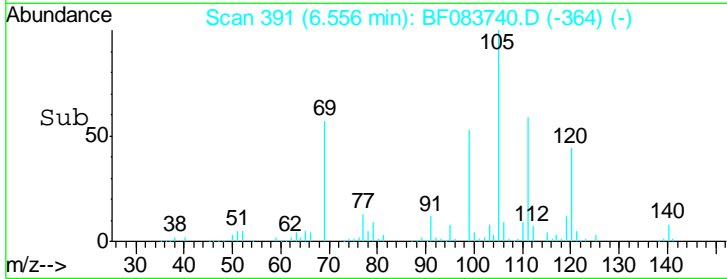
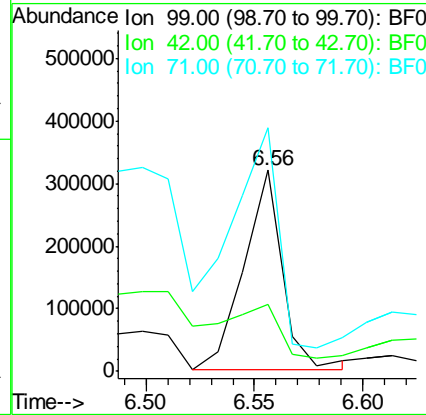
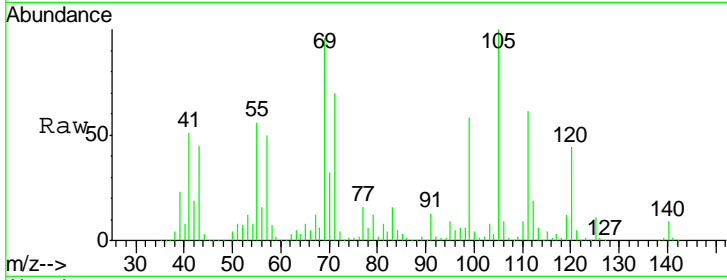




#7
 Phenol-d6
 Concen: 72.20 ng
 RT: 6.56 min Scan# 391
 Delta R.T. 0.01 min
 Lab File: BF083740.D
 Acq: 13 Dec 2015 20:20

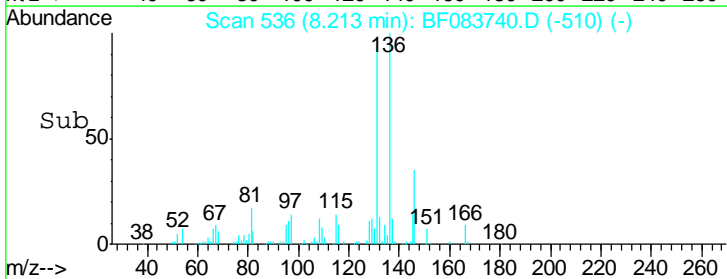
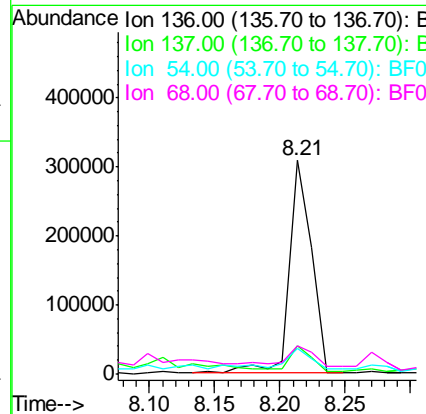
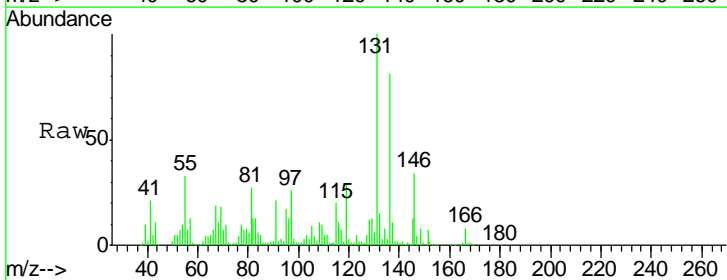
Instrument :
 BNA_F
ClientSampled :
 SB-08(16-18)

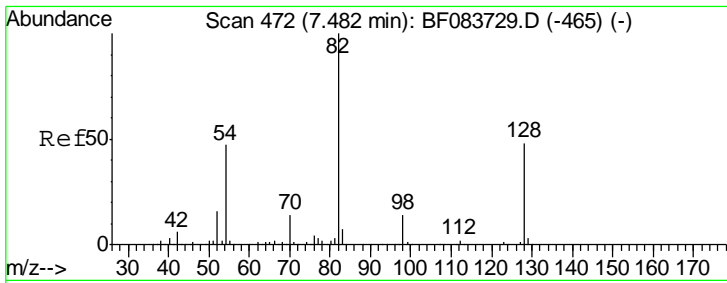
Tgt Ion	Resp	Lower	Upper
99	392011		
42	33.1	17.3	25.9#
71	121.1	26.6	40.0#



#21
 Naphthalene-d8
 Concen: 20.00 ng
 RT: 8.21 min Scan# 536
 Delta R.T. 0.00 min
 Lab File: BF083740.D
 Acq: 13 Dec 2015 20:20

Tgt Ion	Resp	Lower	Upper
136	370143		
137	13.1	8.7	13.1#
54	12.3	7.8	11.6#
68	13.0	5.7	8.5#

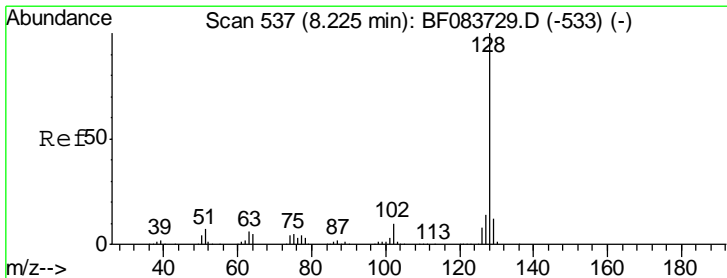
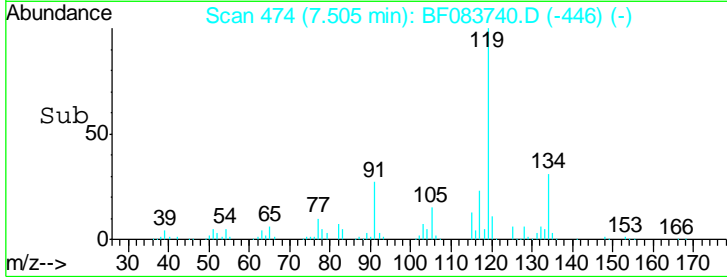
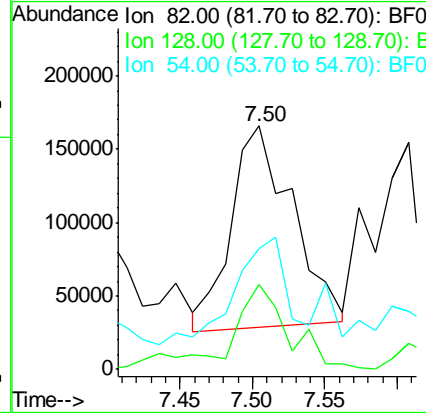
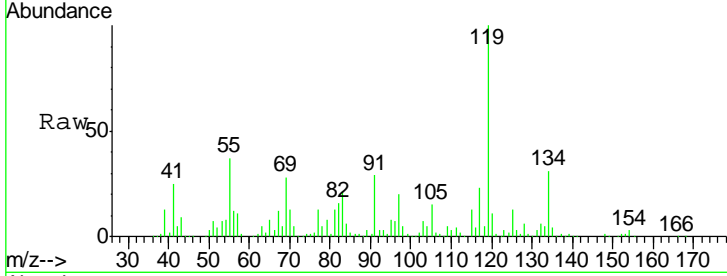




#23
 Nitrobenzene-d5
 Concen: 60.71 ng
 RT: 7.50 min Scan# 474
 Delta R.T. 0.02 min
 Lab File: BF083740.D
 Acq: 13 Dec 2015 20:20

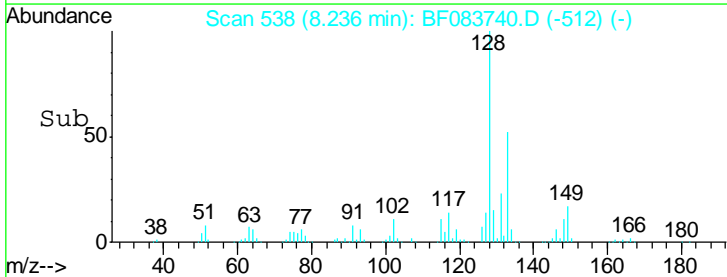
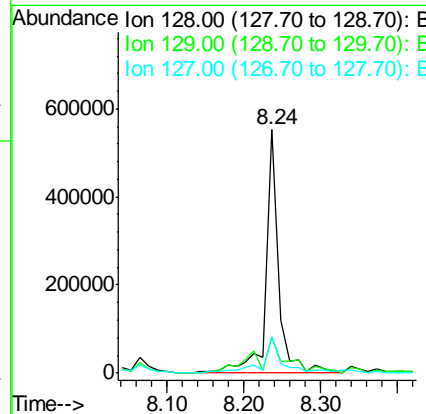
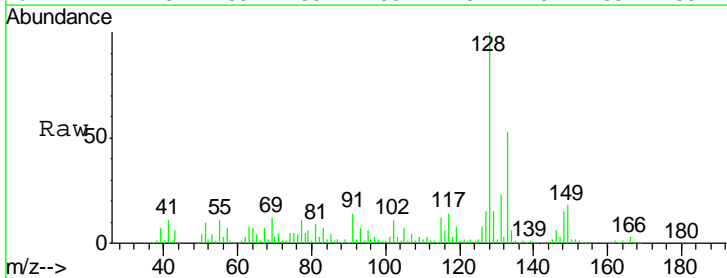
Instrument :
 BNA_F
 ClientSampleId :
 SB-08(16-18)

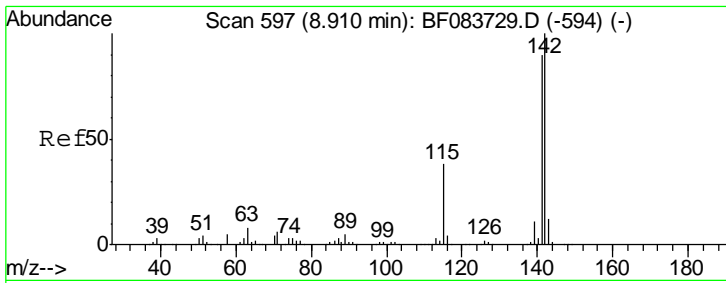
Tgt Ion	Resp	Lower	Upper
82	401670		
128	35.0	30.7	46.1
54	49.6	42.5	63.7



#31
 Naphthalene
 Concen: 32.09 ng
 RT: 8.24 min Scan# 538
 Delta R.T. 0.00 min
 Lab File: BF083740.D
 Acq: 13 Dec 2015 20:20

Tgt Ion	Resp	Lower	Upper
128	619104		
129	14.7	8.6	13.0#
127	14.9	10.6	16.0

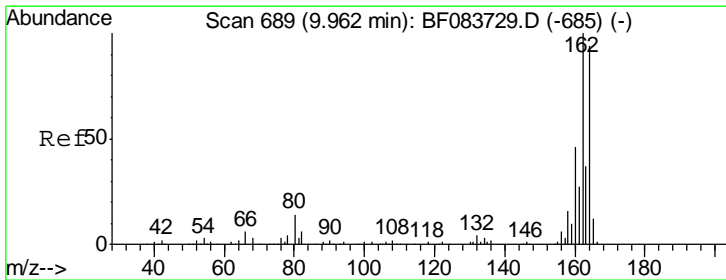
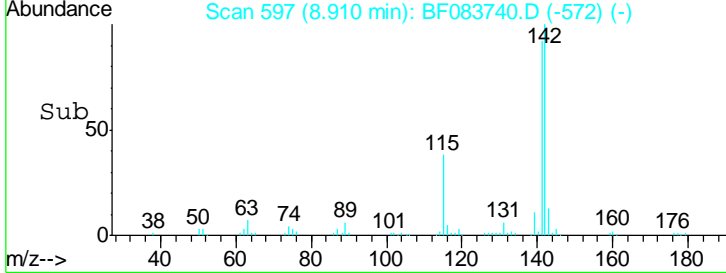
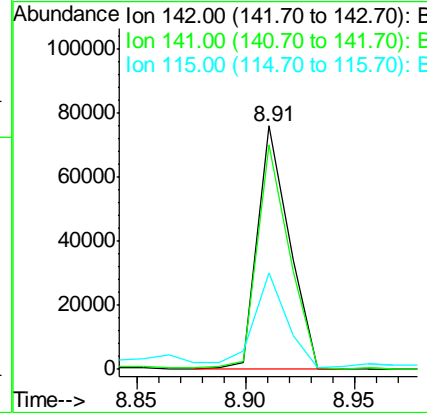
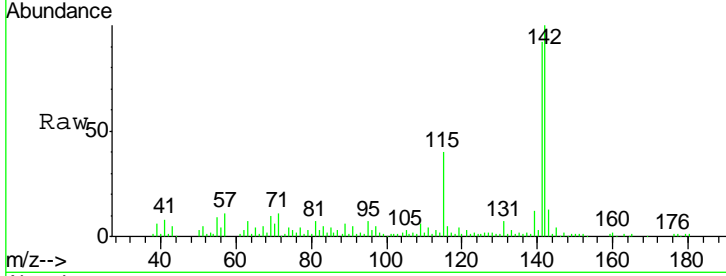




#37
 2-Methylnaphthalene
 Concen: 6.38 ng
 RT: 8.91 min Scan# 597
 Delta R.T. -0.01 min
 Lab File: BF083740.D
 Acq: 13 Dec 2015 20:20

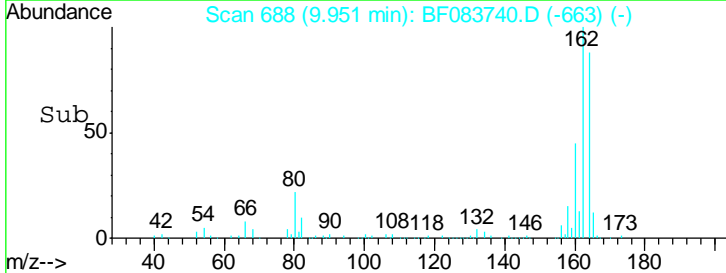
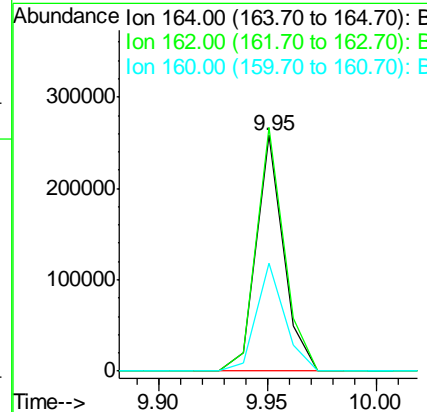
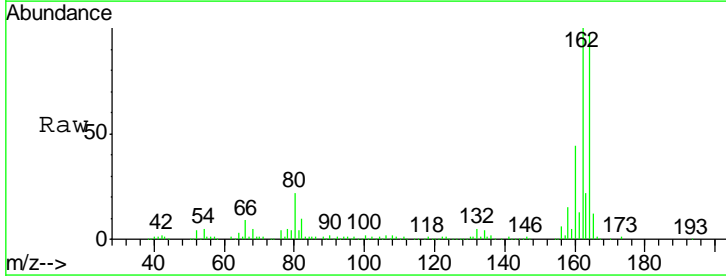
Instrument :
 BNA_F
 ClientSampled :
 SB-08(16-18)

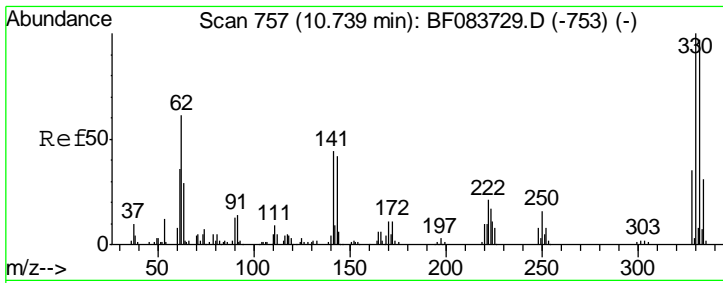
Tgt Ion	Resp	Lower	Upper
142	100		
141	92.3	70.3	105.5
115	39.5	29.2	43.8



#38
 Acenaphthene-d10
 Concen: 20.00 ng
 RT: 9.95 min Scan# 688
 Delta R.T. -0.01 min
 Lab File: BF083740.D
 Acq: 13 Dec 2015 20:20

Tgt Ion	Resp	Lower	Upper
164	100		
162	103.3	78.8	118.2
160	45.6	33.4	50.2

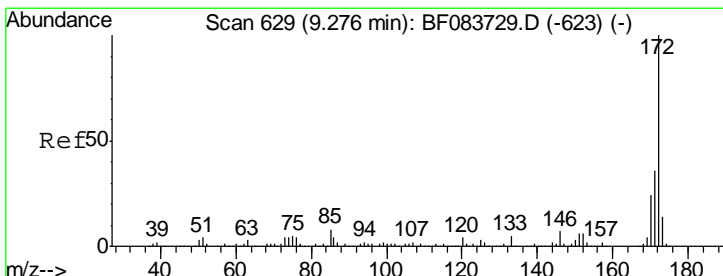
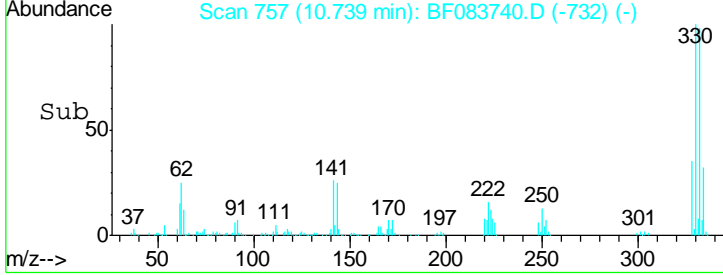
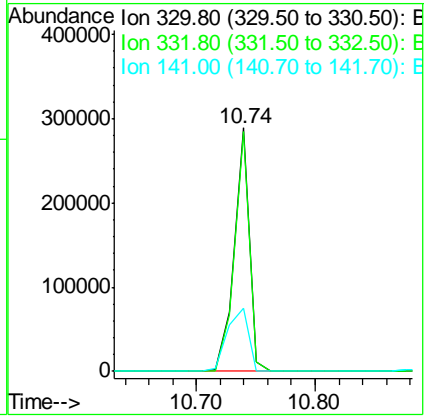
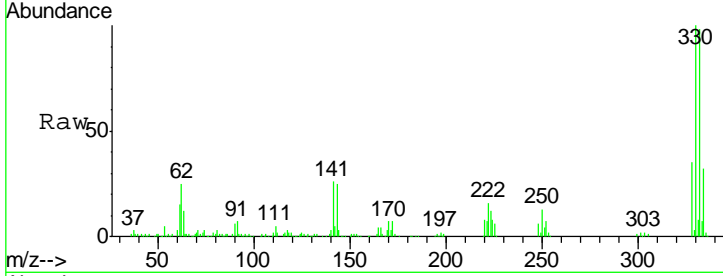




#41
 2,4,6-Tribromophenol
 Concen: 111.95 ng
 RT: 10.74 min Scan# 757
 Delta R.T. -0.01 min
 Lab File: BF083740.D
 Acq: 13 Dec 2015 20:20

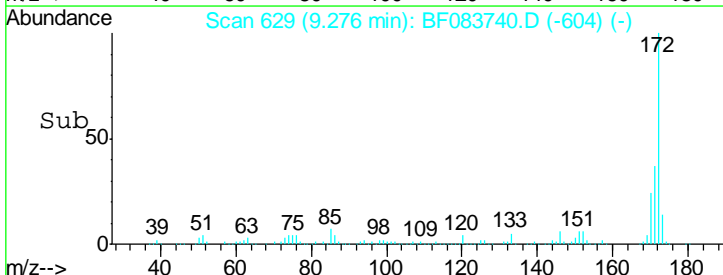
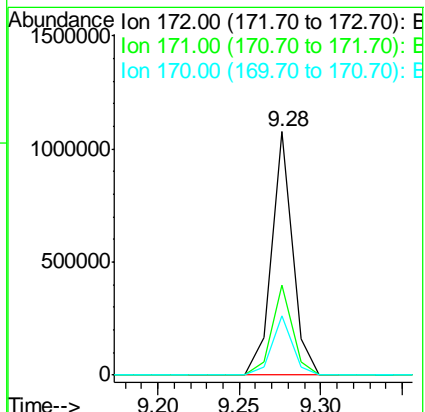
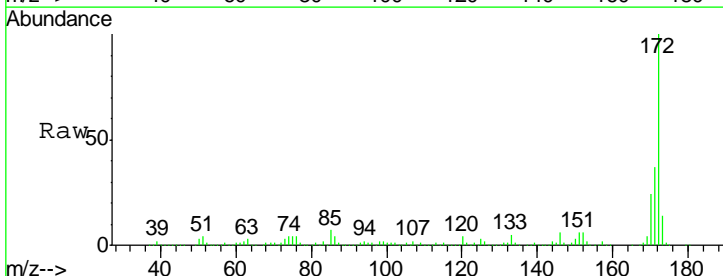
Instrument :
 BNA_F
ClientSampled :
 SB-08(16-18)

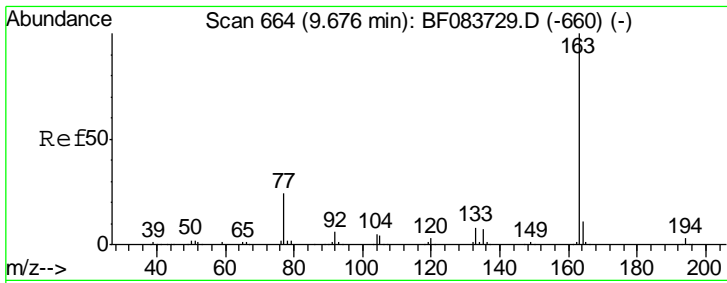
Tgt Ion	Resp	Lower	Upper
330	100		
332	97.8	0.0	0.0#
141	36.0	0.0	0.0#



#44
 2-Fluorobiphenyl
 Concen: 57.12 ng
 RT: 9.28 min Scan# 629
 Delta R.T. -0.01 min
 Lab File: BF083740.D
 Acq: 13 Dec 2015 20:20

Tgt Ion	Resp	Lower	Upper
172	100		
171	36.8	28.6	42.8
170	24.5	19.4	29.0

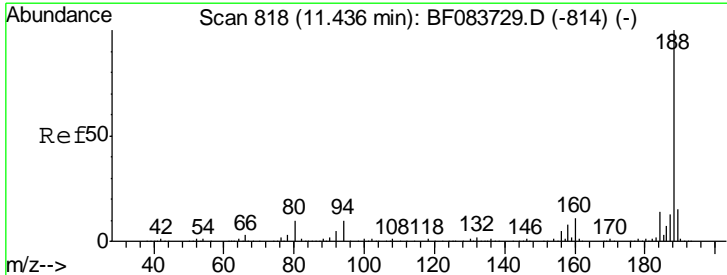
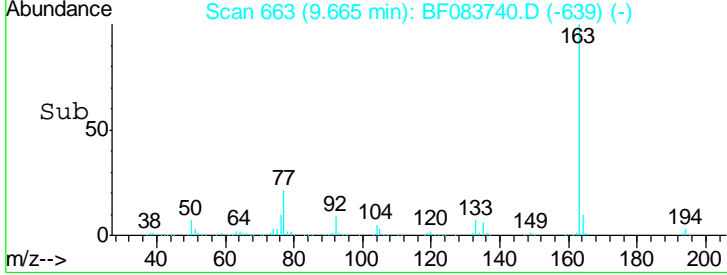
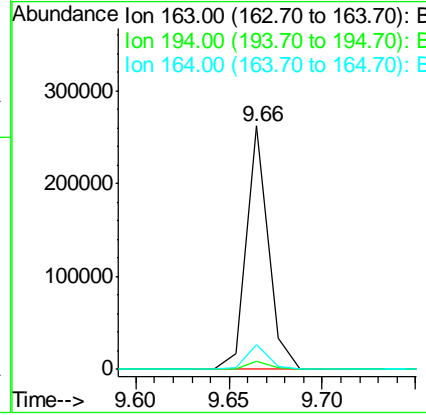
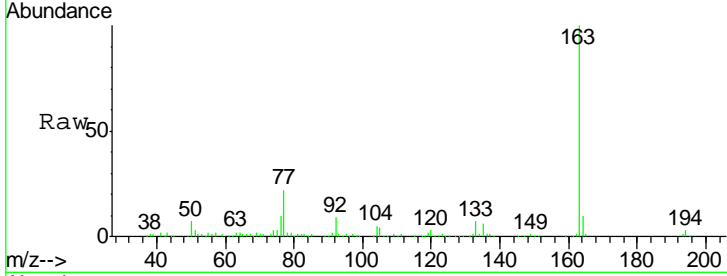




#49
 Dimethylphthalate
 Concen: 12.28 ng
 RT: 9.66 min Scan# 663
 Delta R.T. -0.02 min
 Lab File: BF083740.D
 Acq: 13 Dec 2015 20:20

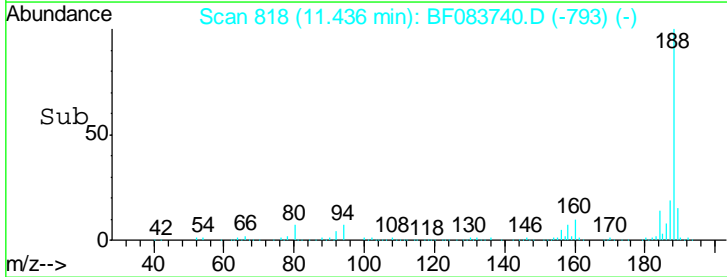
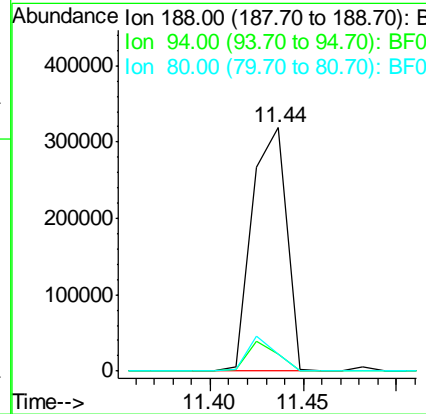
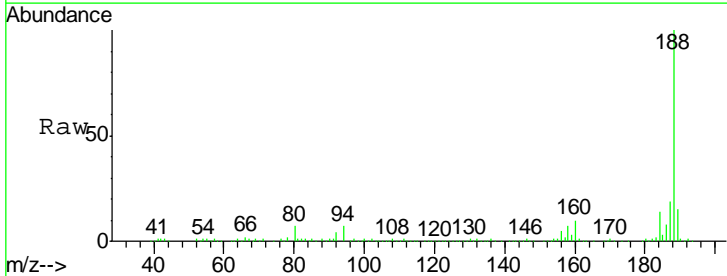
Instrument :
 BNA_F
 ClientSampled :
 SB-08(16-18)

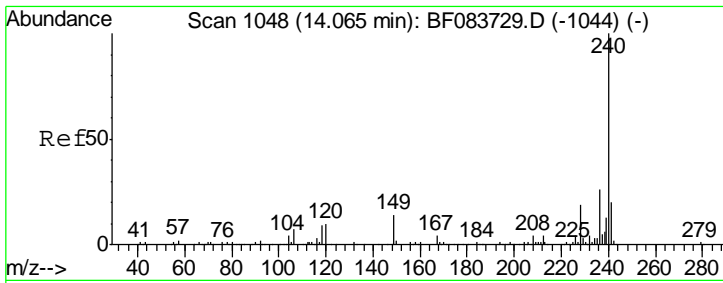
Tgt Ion	Resp	Lower	Upper
163	100		
194	3.2	2.8	4.2
164	10.2	8.6	13.0



#63
 Phenanthrene-d10
 Concen: 20.00 ng
 RT: 11.44 min Scan# 818
 Delta R.T. -0.01 min
 Lab File: BF083740.D
 Acq: 13 Dec 2015 20:20

Tgt Ion	Resp	Lower	Upper
188	100		
94	6.8	9.4	14.2#
80	6.8	10.6	16.0#

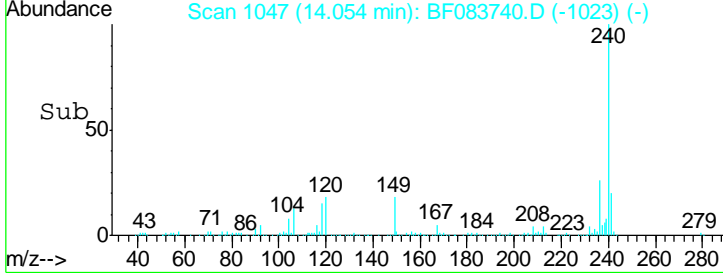
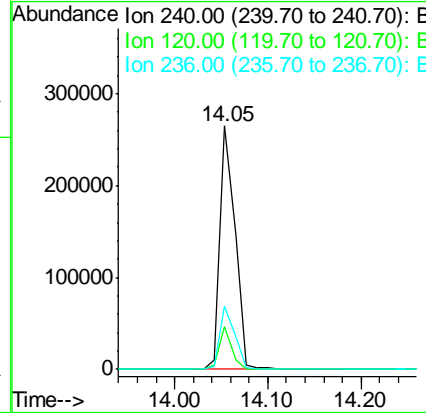
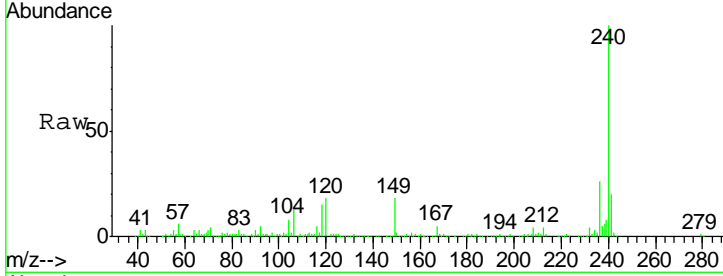




#75
 Chrysene-d12
 Concen: 20.00 ng
 RT: 14.05 min Scan# 1047
 Delta R.T. -0.02 min
 Lab File: BF083740.D
 Acq: 13 Dec 2015 20:20

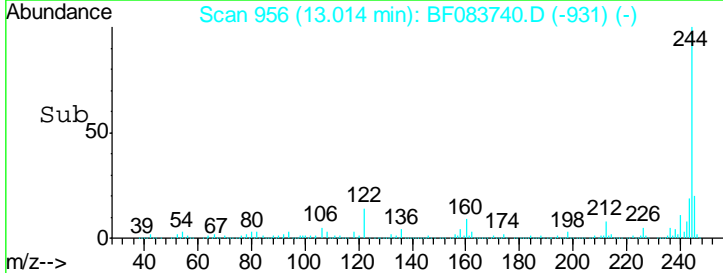
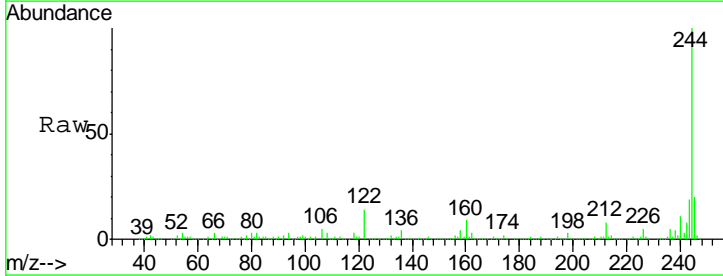
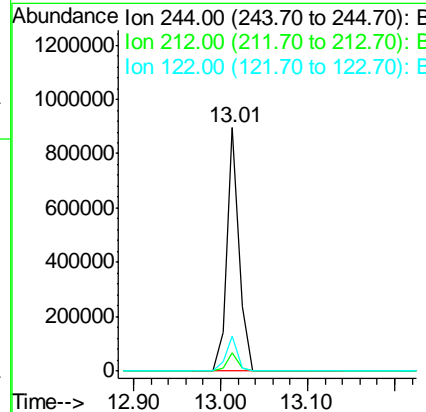
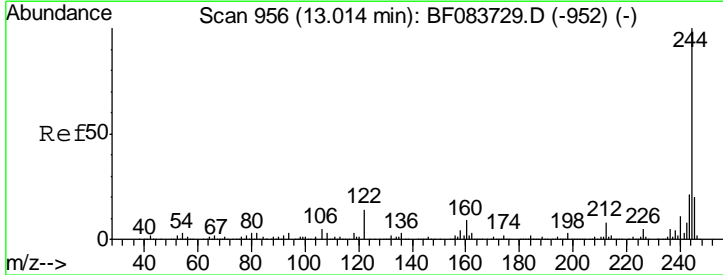
Instrument :
 BNA_F
ClientSampled :
 SB-08(16-18)

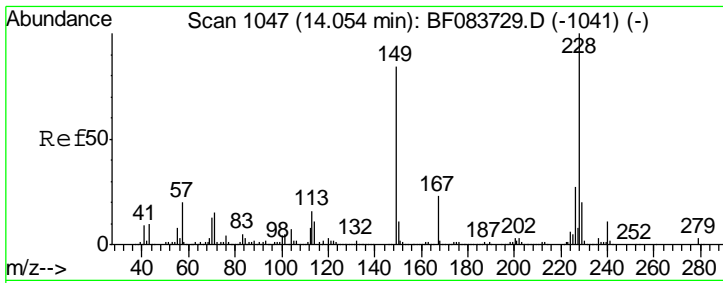
Tgt Ion	Resp	Lower	Upper
240	296010		
120	17.5	8.1	12.1#
236	25.7	20.8	31.2



#78
 Terphenyl-d14
 Concen: 64.07 ng
 RT: 13.01 min Scan# 956
 Delta R.T. -0.01 min
 Lab File: BF083740.D
 Acq: 13 Dec 2015 20:20

Tgt Ion	Resp	Lower	Upper
244	881672		
212	7.6	6.1	9.1
122	14.2	11.0	16.6

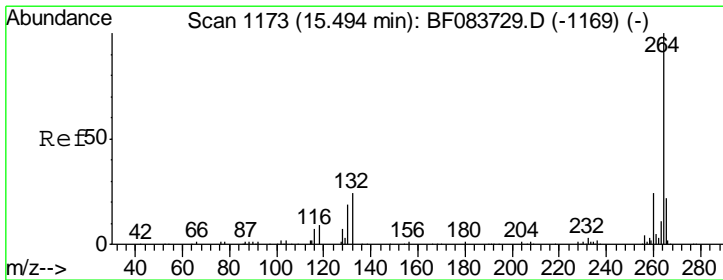
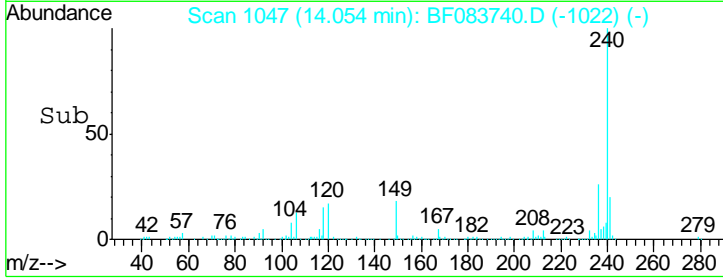
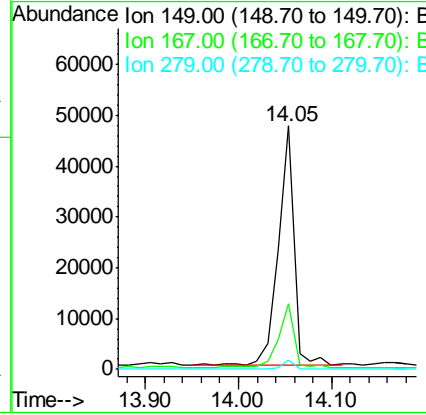
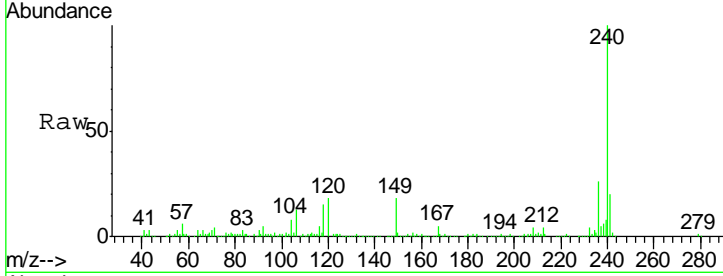




#83
 Bis(2-ethylhexyl)phthalate
 Concen: 4.79 ng
 RT: 14.05 min Scan# 1047
 Delta R.T. -0.01 min
 Lab File: BF083740.D
 Acq: 13 Dec 2015 20:20

Instrument :
 BNA_F
 ClientSampled :
 SB-08(16-18)

Tgt Ion	Resp	Lower	Upper
149	100		
167	27.1	21.8	32.8
279	3.8	3.0	4.4



#86
 Perylene-d12
 Concen: 20.00 ng
 RT: 15.49 min Scan# 1173
 Delta R.T. -0.01 min
 Lab File: BF083740.D
 Acq: 13 Dec 2015 20:20

Tgt Ion	Resp	Lower	Upper
264	100		
260	23.2	19.4	29.0
265	21.3	17.8	26.6

