

Data Path : Z:\svoasrv\HPCHEM1\BNA_F\Data\BF121523\
 Data File : BF136600.D
 Acq On : 15 Dec 2023 19:03
 Operator : CG\JU
 Sample : 05805-03
 Misc :
 ALS Vial : 17 Sample Multiplier: 1

Instrument :
 BNA_F
 ClientSampleId :
 HR-04-12122023

Integration Parameters: rteint.p
 Integrator: RTE
 Smoothing : ON
 Sampling : 1
 Start Thrs : 0.2
 Stop Thrs : 0
 Filtering: 5
 Min Area: 3 % of largest Peak
 Max Peaks: 100
 Peak Location: TOP

If leading or trailing edge < 100 prefer < Baseline drop else tangent >
 Peak separation: 5

Method : Z:\svoasrv\HPCHEM1\BNA_F\Methods\8270-BF120523.M
 Title : ASP BNA STANDARDS FOR 5 POINT CALIBRATION

Signal : TIC: BF136600.D\data.ms

peak #	R.T. min	first scan	max scan	last scan	PK TY	peak height	corr. area	corr. % max.	% of total
1	5.422	563	567	575	rBV	1184432	1012520	4.40%	1.411%
2	6.428	734	738	741	rBV	1195474	930418	4.04%	1.297%
3	6.787	794	799	806	rBV	601949	524169	2.28%	0.731%
4	7.345	891	894	897	rVV	812199	694551	3.02%	0.968%
5	7.381	897	900	903	rVV	628806	464282	2.02%	0.647%
6	8.051	1011	1014	1018	rVV2	1210883	1571671	6.83%	2.190%
7	8.128	1022	1027	1029	rVB2	357821	419728	1.82%	0.585%
8	8.357	1061	1066	1073	rVV5	301189	516079	2.24%	0.719%
9	8.445	1078	1081	1084	rVV3	346723	317104	1.38%	0.442%
10	8.486	1084	1088	1090	rVV2	414310	387091	1.68%	0.540%
11	8.569	1098	1102	1105	rBV2	510210	442979	1.92%	0.617%
12	8.657	1114	1117	1120	rBV	1306786	1173350	5.10%	1.635%
13	8.886	1153	1156	1159	rBV2	345929	301046	1.31%	0.420%
14	9.022	1175	1179	1182	rVB4	278070	365506	1.59%	0.509%
15	9.086	1188	1190	1192	rVV	397524	328217	1.43%	0.457%
16	9.139	1196	1199	1204	rVB	1342649	1055402	4.58%	1.471%
17	9.228	1208	1214	1218	rBV	1594951	1447935	6.29%	2.018%
18	9.481	1255	1257	1259	rVV2	259077	256070	1.11%	0.357%
19	9.545	1263	1268	1270	rVV4	587151	653824	2.84%	0.911%
20	9.569	1270	1272	1275	rVV2	367087	313324	1.36%	0.437%
21	9.604	1275	1278	1281	rVB2	318929	274484	1.19%	0.383%
22	9.757	1301	1304	1308	rVB	1596332	1212787	5.27%	1.690%
23	9.822	1312	1315	1317	rVB	672175	556749	2.42%	0.776%
24	9.992	1340	1344	1346	rBV3	159775	250503	1.09%	0.349%
25	10.080	1355	1359	1362	rBV3	294676	381368	1.66%	0.532%
26	10.257	1386	1389	1392	rVV	1457055	1185079	5.15%	1.652%
27	10.480	1421	1427	1429	rBV	433789	600758	2.61%	0.837%
28	10.610	1444	1449	1453	rVV3	652032	672251	2.92%	0.937%
29	10.733	1466	1470	1478	rVB	1327707	1451019	6.30%	2.022%
30	11.180	1543	1546	1549	rBV	1019447	875645	3.80%	1.220%
31	11.210	1549	1551	1557	rVB	380665	401187	1.74%	0.559%
32	11.310	1565	1568	1573	rBV	649367	556962	2.42%	0.776%
33	11.610	1616	1619	1622	rBV	875984	709656	3.08%	0.989%
34	11.722	1633	1638	1641	rVB	6638490	6737094	29.26%	9.390%
35	11.857	1657	1661	1667	rVB2	328964	424378	1.84%	0.591%
36	12.022	1685	1689	1695	rBV	724769	712201	3.09%	0.993%

Data Path : Z:\svoasrv\HPCHEM1\BNA_F\Data\BF121523\
 Data File : BF136600.D
 Acq On : 15 Dec 2023 19:03
 Operator : CG\JU
 Sample : 05805-03
 Misc :
 ALS Vial : 17 Sample Multiplier: 1

Instrument :
 BNA_F
 ClientSampleId :
 HR-04-12122023

Integration Parameters: rteint.p
 Integrator: RTE
 Smoothing : ON Filtering: 5
 Sampling : 1 Min Area: 3 % of largest Peak
 Start Thrs: 0.2 Max Peaks: 100
 Stop Thrs : 0 Peak Location: TOP

If leading or trailing edge < 100 prefer < Baseline drop else tangent >
 Peak separation: 5

Method : Z:\svoasrv\HPCHEM1\BNA_F\Methods\8270-BF120523.M
 Title : ASP BNA STANDARDS FOR 5 POINT CALIBRATION

37	12.439	1750	1760	1761	rBV	9508907	23021752	100.00%	32.086%
38	12.457	1761	1763	1767	rVB2	9252821	10758505	46.73%	14.994%
39	12.521	1770	1774	1777	rVB	3637781	3367870	14.63%	4.694%
40	12.551	1777	1779	1780	rBV	543885	395924	1.72%	0.552%
41	12.786	1816	1819	1824	rVB	511503	406046	1.76%	0.566%
42	12.910	1835	1840	1843	rBV	1374296	1283187	5.57%	1.788%
43	13.145	1877	1880	1881	rBV	447851	383647	1.67%	0.535%
44	13.239	1893	1896	1899	rVB	413747	319777	1.39%	0.446%
45	13.486	1935	1938	1941	rVB	299090	256393	1.11%	0.357%
46	13.910	2007	2010	2015	rVB	424510	398924	1.73%	0.556%
47	13.963	2016	2019	2023	rVB	615757	565963	2.46%	0.789%
48	15.439	2266	2270	2275	rBV	318645	414324	1.80%	0.577%

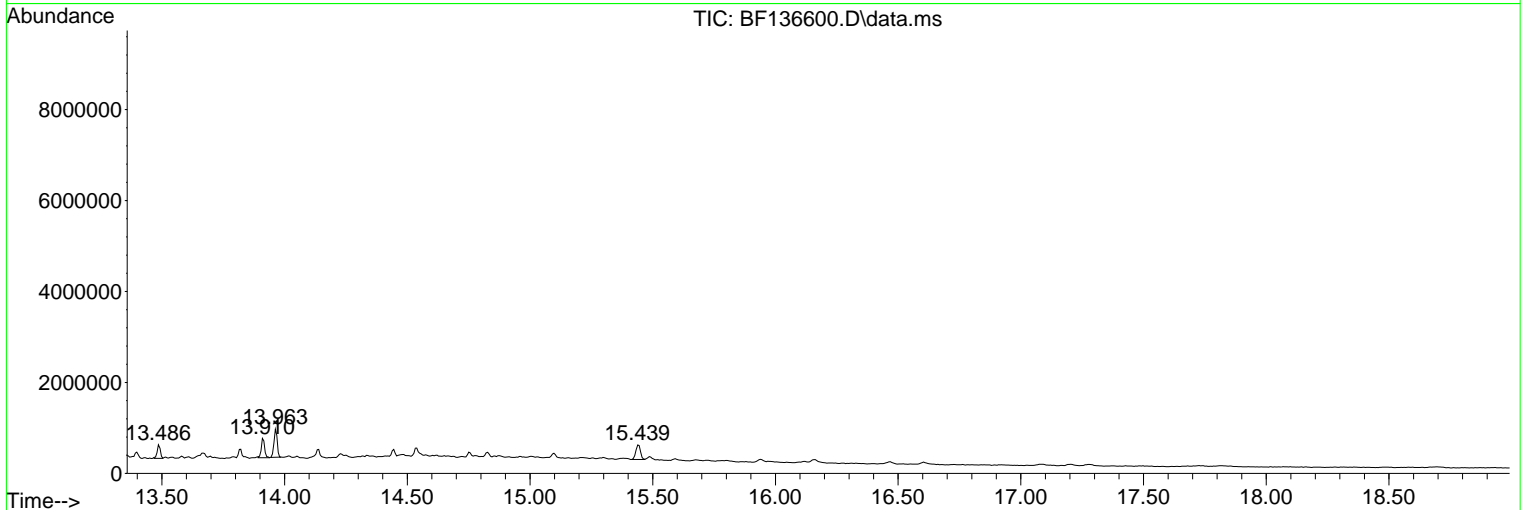
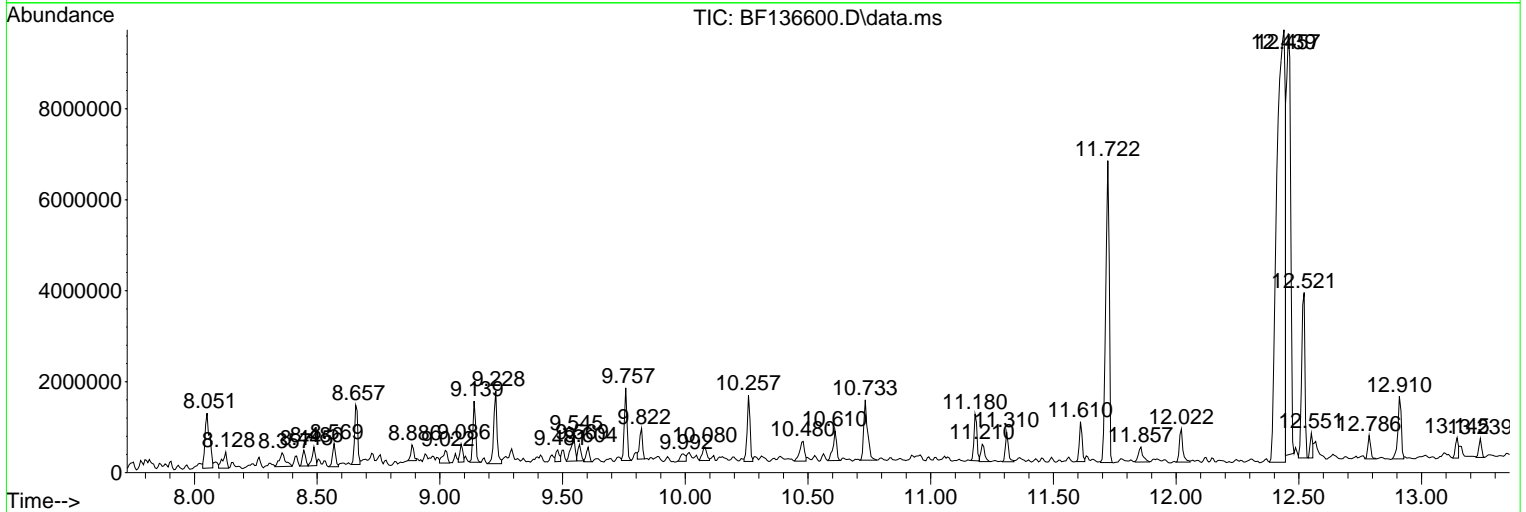
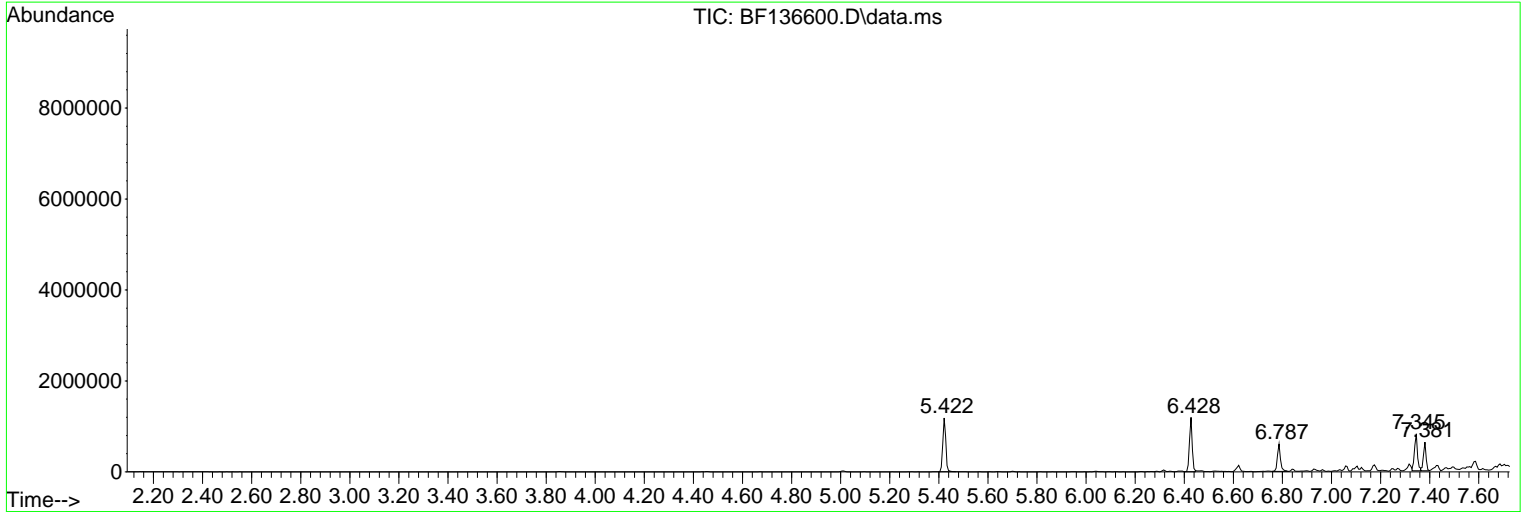
Sum of corrected areas: 71749699

Data Path : Z:\svoasrv\HPCHEM1\BNA_F\Data\BF121523\
 Data File : BF136600.D
 Acq On : 15 Dec 2023 19:03
 Operator : CG\JU
 Sample : 05805-03
 Misc :
 ALS Vial : 17 Sample Multiplier: 1

Instrument :
 BNA_F
 ClientSampleId :
 HR-04-12122023

Quant Method : Z:\svoasrv\HPCHEM1\BNA_F\Methods\8270-BF120523.M
 Quant Title : ASP BNA STANDARDS FOR 5 POINT CALIBRATION

TIC Library : C:\Database\NIST20.L
 TIC Integration Parameters: LSCINT.P



Data Path : Z:\svoasrv\HPCHEM1\BNA_F\Data\BF121523\
 Data File : BF136600.D
 Acq On : 15 Dec 2023 19:03
 Operator : CG\JU
 Sample : 05805-03
 Misc :
 ALS Vial : 17 Sample Multiplier: 1

Instrument :
 BNA_F
 ClientSampleId :
 HR-04-12122023

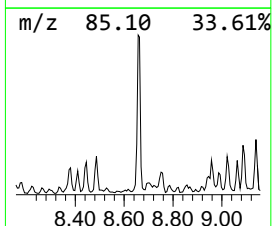
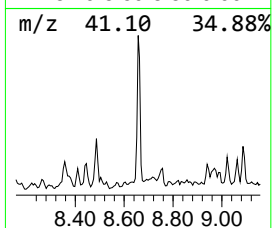
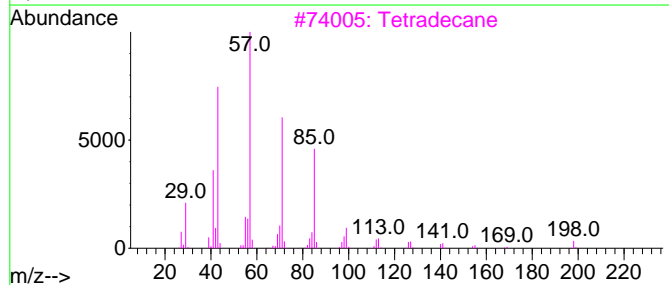
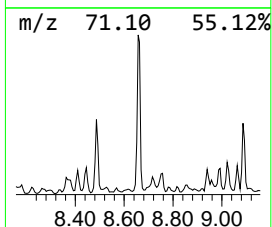
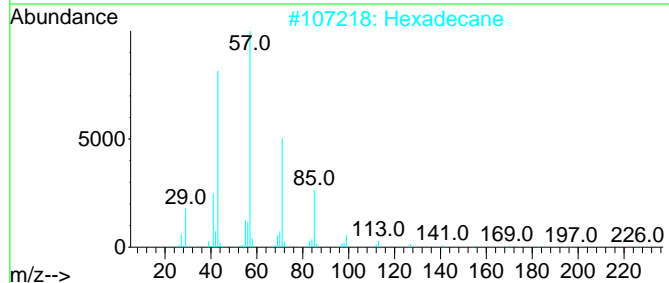
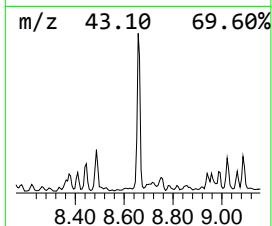
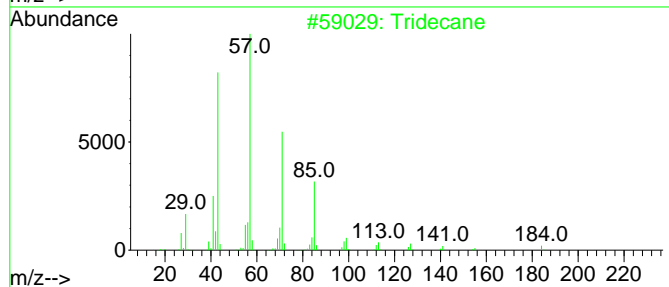
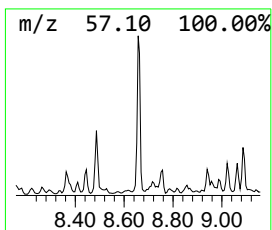
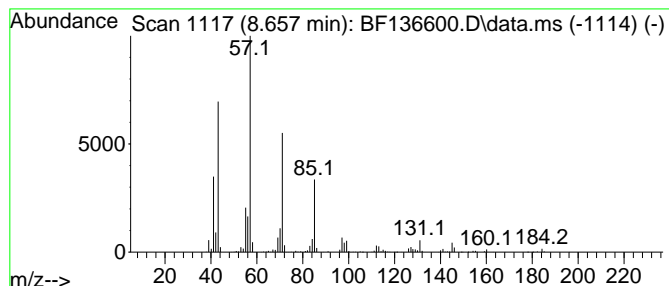
Quant Method : Z:\svoasrv\HPCHEM1\BNA_F\Methods\8270-BF120523.M
 Quant Title : ASP BNA STANDARDS FOR 5 POINT CALIBRATION

TIC Library : C:\Database\NIST20.L
 TIC Integration Parameters: LSCINT.P

 Peak Number 1 Tridecane Concentration Rank 15

R.T.	EstConc	Area	Relative to ISTD	R.T.
8.657	14.93 ng	1173350	Naphthalene-d8	8.063

Hit#	of 5	Tentative ID	MW	MolForm	CAS#	Qual
1		Tridecane	184	C13H28	000629-50-5	95
2		Hexadecane	226	C16H34	000544-76-3	80
3		Tetradecane	198	C14H30	000629-59-4	80
4		Decane, 2,3,5-trimethyl-	184	C13H28	062238-11-3	72
5		Undecane, 2,3-dimethyl-	184	C13H28	017312-77-5	64



Data Path : Z:\svoasrv\HPCHEM1\BNA_F\Data\BF121523\
 Data File : BF136600.D
 Acq On : 15 Dec 2023 19:03
 Operator : CG\JU
 Sample : 05805-03
 Misc :
 ALS Vial : 17 Sample Multiplier: 1

Instrument :
 BNA_F
 ClientSampleId :
 HR-04-12122023

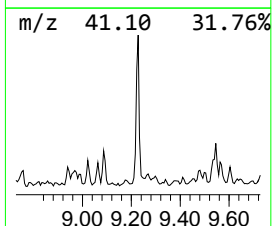
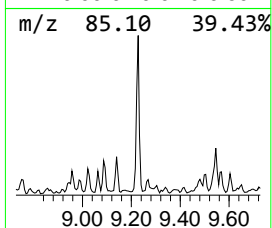
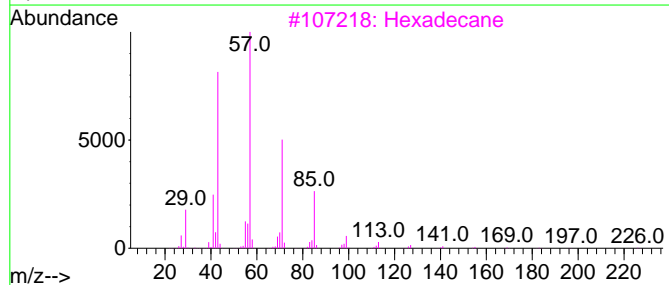
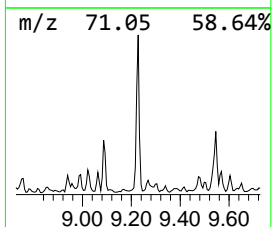
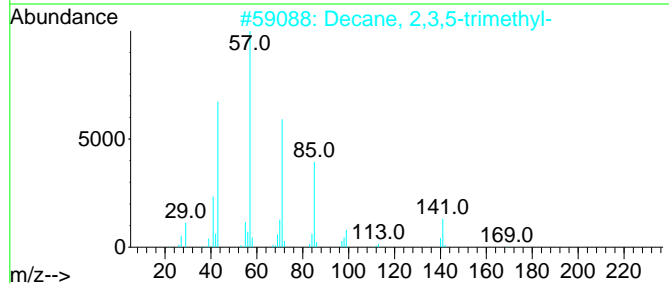
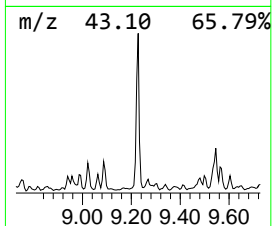
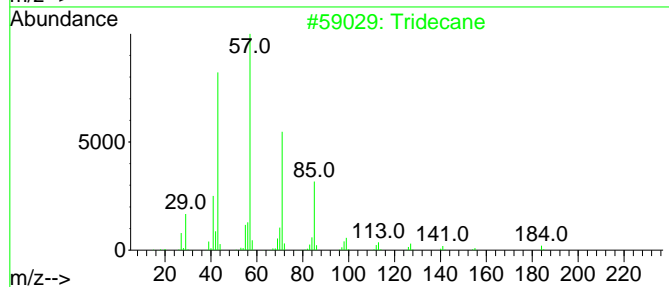
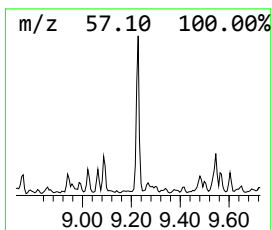
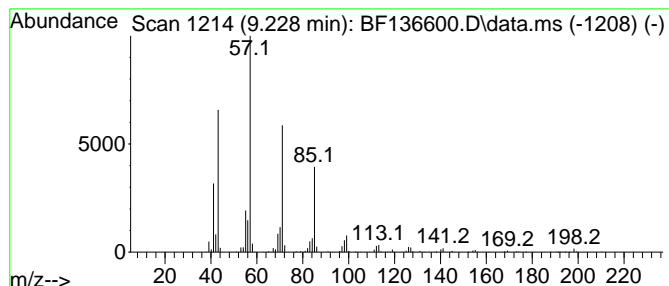
Quant Method : Z:\svoasrv\HPCHEM1\BNA_F\Methods\8270-BF120523.M
 Quant Title : ASP BNA STANDARDS FOR 5 POINT CALIBRATION

TIC Library : C:\Database\NIST20.L
 TIC Integration Parameters: LSCINT.P

 Peak Number 2 Decane, 2,3,5-trimethyl- Concentration Rank 6

R.T.	EstConc	Area	Relative to ISTD	R.T.
9.228	52.01 ng	1447940	Acenaphthene-d10	9.822

Hit#	of 5	Tentative ID	MW	MolForm	CAS#	Qual
1		Tridecane	184	C13H28	000629-50-5	90
2		Decane, 2,3,5-trimethyl-	184	C13H28	062238-11-3	78
3		Hexadecane	226	C16H34	000544-76-3	72
4		Nonane, 3,7-dimethyl-	156	C11H24	017302-32-8	68
5		Bacchotricuneatin c	342	C20H22O5	066563-30-2	64



Data Path : Z:\svoasrv\HPCHEM1\BNA_F\Data\BF121523\
 Data File : BF136600.D
 Acq On : 15 Dec 2023 19:03
 Operator : CG\JU
 Sample : 05805-03
 Misc :
 ALS Vial : 17 Sample Multiplier: 1

Instrument :
 BNA_F
 ClientSampleId :
 HR-04-12122023

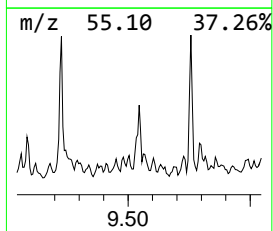
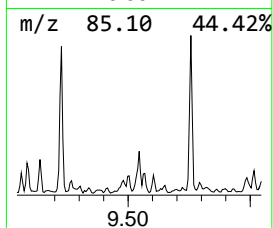
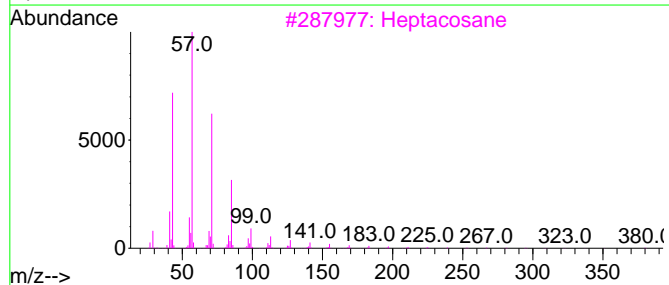
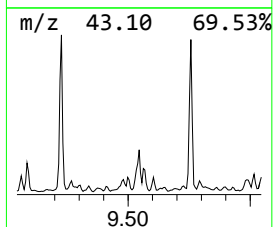
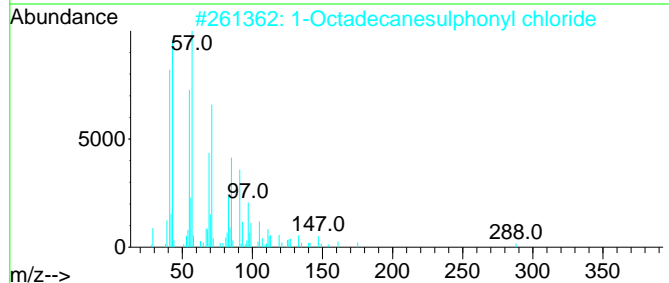
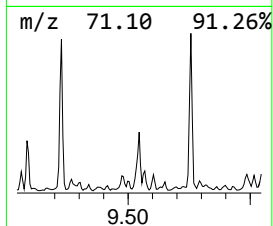
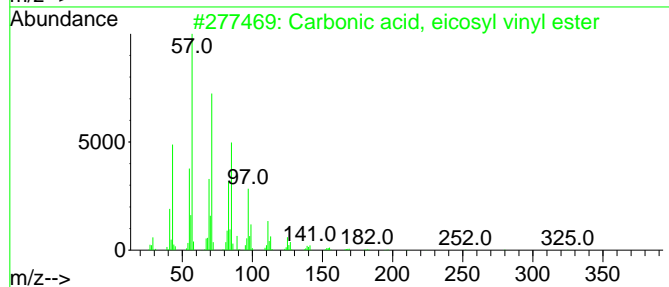
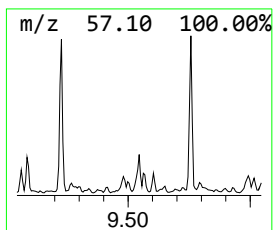
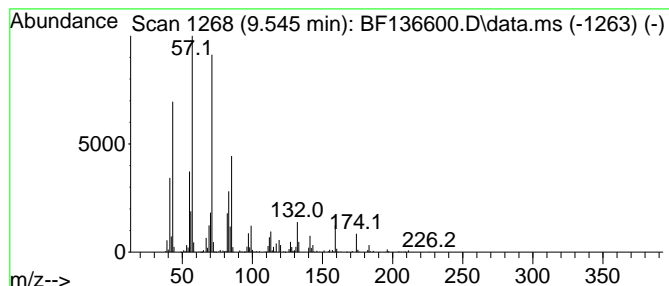
Quant Method : Z:\svoasrv\HPCHEM1\BNA_F\Methods\8270-BF120523.M
 Quant Title : ASP BNA STANDARDS FOR 5 POINT CALIBRATION

TIC Library : C:\Database\NIST20.L
 TIC Integration Parameters: LSCINT.P

 Peak Number 3 Carbonic acid, eicosyl viny... Concentration Rank 12

R.T.	EstConc	Area	Relative to ISTD	R.T.
9.545	23.49 ng	653824	Acenaphthene-d10	9.822

Hit#	of 5	Tentative ID	MW	MolForm	CAS#	Qual
1		Carbonic acid, eicosyl vinyl ester	368	C23H44O3	1000382-54-3	87
2		1-Octadecanesulphonyl chloride	352	C18H37ClO2S	1000342-70-4	86
3		Heptacosane	380	C27H56	000593-49-7	64
4		Decane, 5-propyl-	184	C13H28	017312-62-8	58
5		Tridecane, 5-propyl-	226	C16H34	055045-11-9	58



Data Path : Z:\svoasrv\HPCHEM1\BNA_F\Data\BF121523\
 Data File : BF136600.D
 Acq On : 15 Dec 2023 19:03
 Operator : CG\JU
 Sample : 05805-03
 Misc :
 ALS Vial : 17 Sample Multiplier: 1

Instrument :
 BNA_F
 ClientSampleId :
 HR-04-12122023

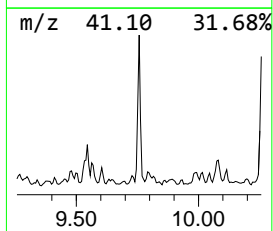
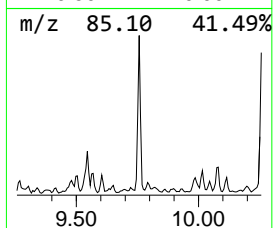
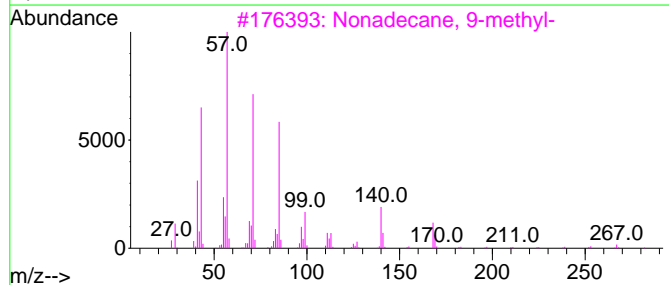
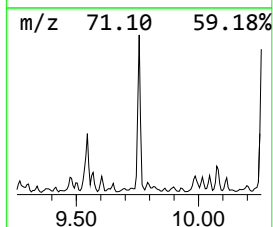
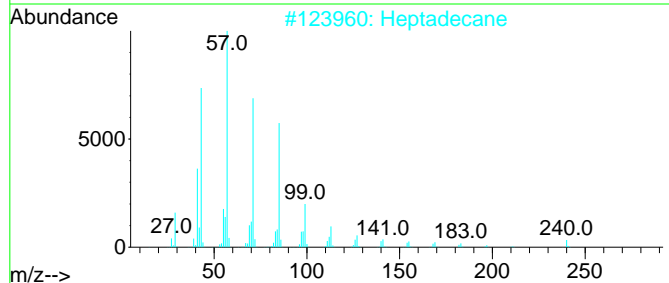
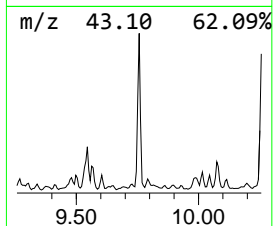
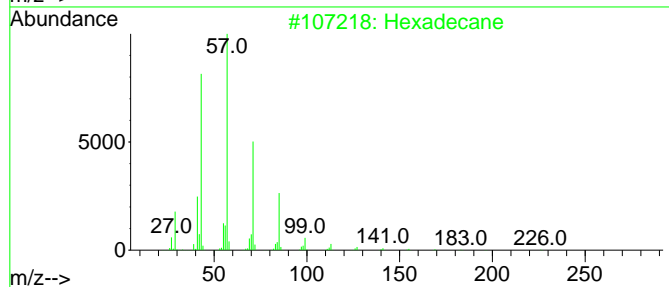
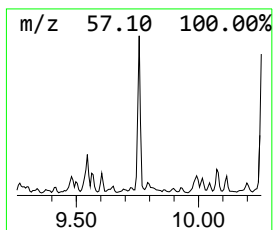
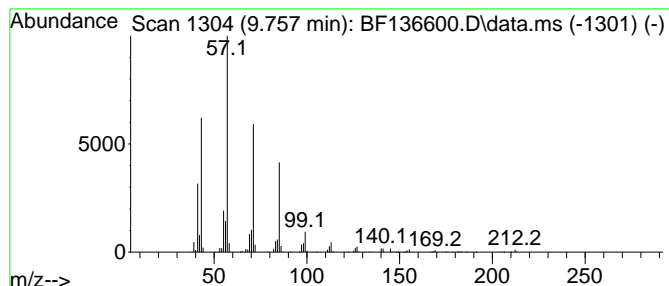
Quant Method : Z:\svoasrv\HPCHEM1\BNA_F\Methods\8270-BF120523.M
 Quant Title : ASP BNA STANDARDS FOR 5 POINT CALIBRATION

TIC Library : C:\Database\NIST20.L
 TIC Integration Parameters: LSCINT.P

 Peak Number 4 Hexadecane Concentration Rank 7

R.T.	EstConc	Area	Relative to ISTD	R.T.
9.757	43.57 ng	1212790	Acenaphthene-d10	9.822

Hit#	of 5	Tentative ID	MW	MolForm	CAS#	Qual
1		Hexadecane	226	C16H34	000544-76-3	90
2		Heptadecane	240	C17H36	000629-78-7	90
3		Nonadecane, 9-methyl-	282	C20H42	013287-24-6	80
4		Nonane, 5-butyl-	184	C13H28	017312-63-9	72
5		Tetradecane	198	C14H30	000629-59-4	72



Data Path : Z:\svoasrv\HPCHEM1\BNA_F\Data\BF121523\
 Data File : BF136600.D
 Acq On : 15 Dec 2023 19:03
 Operator : CG\JU
 Sample : 05805-03
 Misc :
 ALS Vial : 17 Sample Multiplier: 1

Instrument :
 BNA_F
 ClientSampleId :
 HR-04-12122023

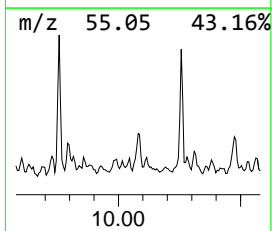
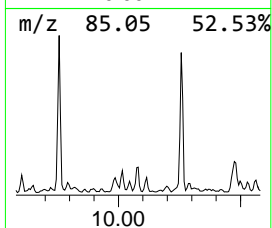
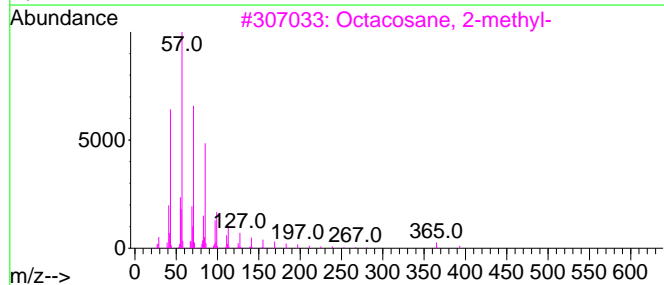
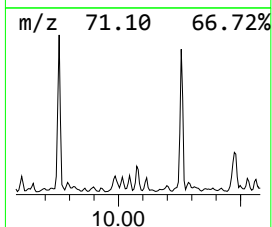
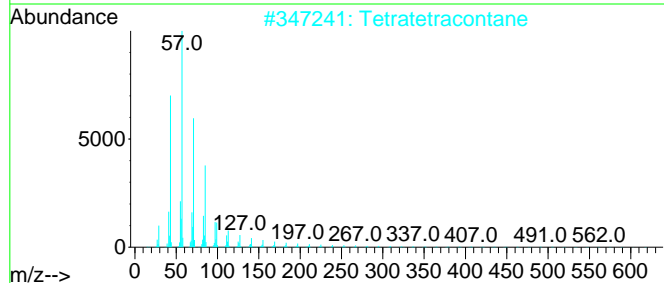
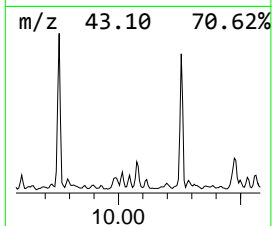
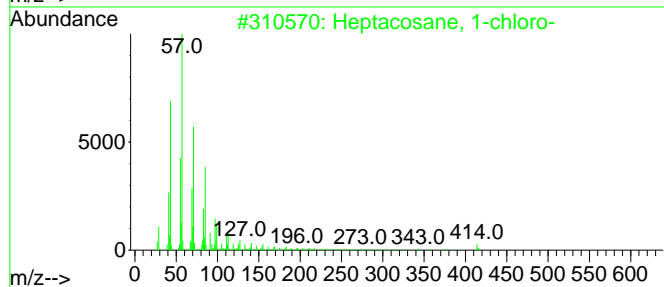
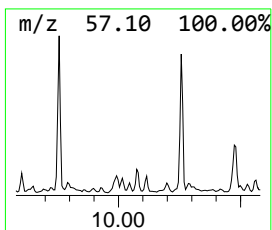
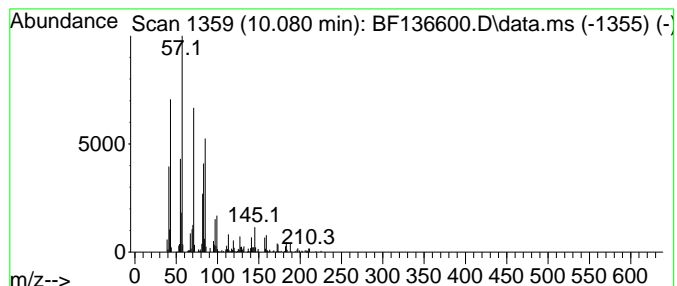
Quant Method : Z:\svoasrv\HPCHEM1\BNA_F\Methods\8270-BF120523.M
 Quant Title : ASP BNA STANDARDS FOR 5 POINT CALIBRATION

TIC Library : C:\Database\NIST20.L
 TIC Integration Parameters: LSCINT.P

 Peak Number 5 Heptacosane, 1-chloro- Concentration Rank 20

R.T.	EstConc	Area	Relative to ISTD	R.T.
10.081	13.70 ng	381368	Acenaphthene-d10	9.822

Hit#	of 5	Tentative ID	MW	MolForm	CAS#	Qual
1		Heptacosane, 1-chloro-	414	C27H55Cl	062016-79-9	58
2		Tetratetracontane	619	C44H90	007098-22-8	52
3		Octacosane, 2-methyl-	408	C29H60	001560-98-1	52
4		2-Bromotetradecane	276	C14H29Br	074036-95-6	49
5		Heneicosane	296	C21H44	000629-94-7	49



Data Path : Z:\svoasrv\HPCHEM1\BNA_F\Data\BF121523\
 Data File : BF136600.D
 Acq On : 15 Dec 2023 19:03
 Operator : CG\JU
 Sample : 05805-03
 Misc :
 ALS Vial : 17 Sample Multiplier: 1

Instrument :
 BNA_F
 ClientSampleId :
 HR-04-12122023

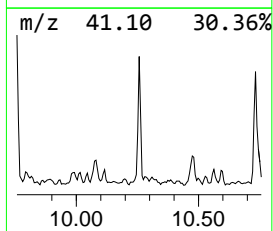
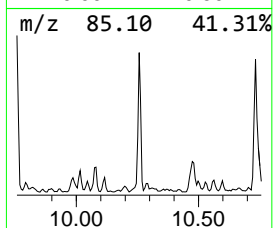
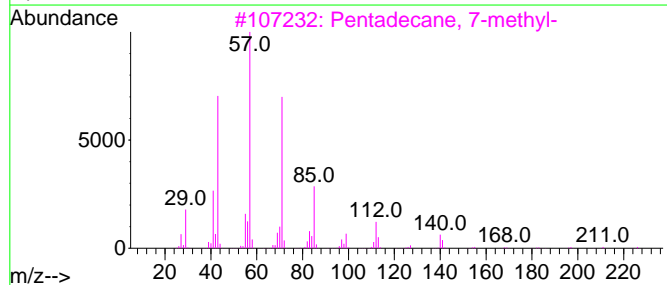
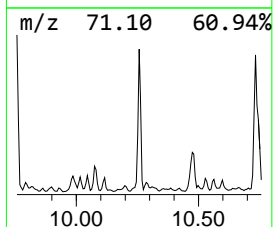
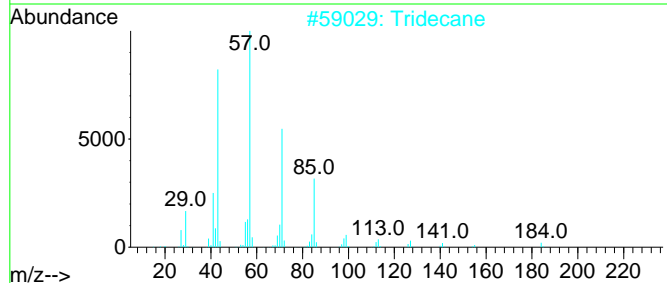
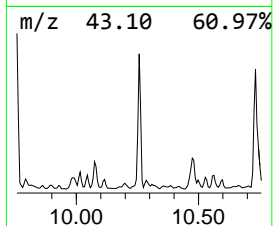
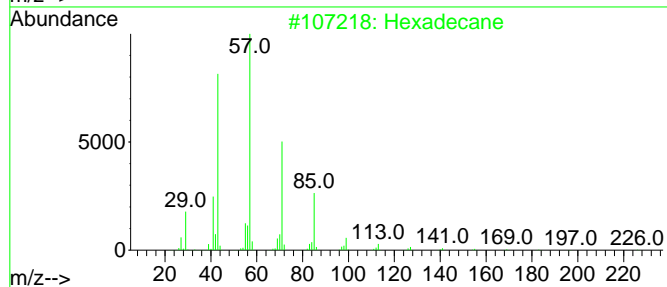
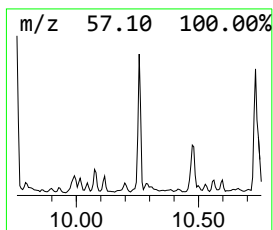
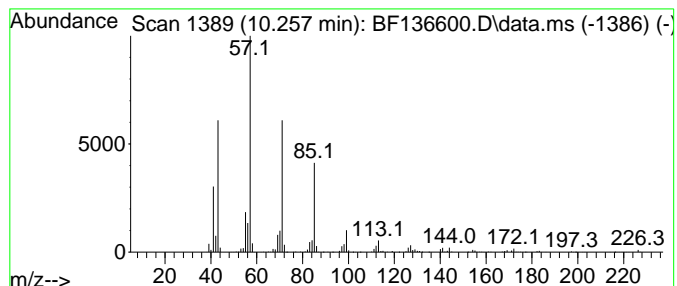
Quant Method : Z:\svoasrv\HPCHEM1\BNA_F\Methods\8270-BF120523.M
 Quant Title : ASP BNA STANDARDS FOR 5 POINT CALIBRATION

TIC Library : C:\Database\NIST20.L
 TIC Integration Parameters: LSCINT.P

 Peak Number 6 Pentadecane, 7-methyl- Concentration Rank 8

R.T.	EstConc	Area	Relative to ISTD	R.T.
10.257	42.57 ng	1185080	Acenaphthene-d10	9.822

Hit#	of	5	Tentative ID	MW	MolForm	CAS#	Qual
1			Hexadecane	226	C16H34	000544-76-3	96
2			Tridecane	184	C13H28	000629-50-5	90
3			Pentadecane, 7-methyl-	226	C16H34	006165-40-8	83
4			Dodecane, 1-iodo-	296	C12H25I	004292-19-7	80
5			Dodecane, 2-methyl-6-propyl-	226	C16H34	055045-08-4	80



Data Path : Z:\svoasrv\HPCHEM1\BNA_F\Data\BF121523\
 Data File : BF136600.D
 Acq On : 15 Dec 2023 19:03
 Operator : CG\JU
 Sample : 05805-03
 Misc :
 ALS Vial : 17 Sample Multiplier: 1

Instrument :
 BNA_F
 ClientSampleId :
 HR-04-12122023

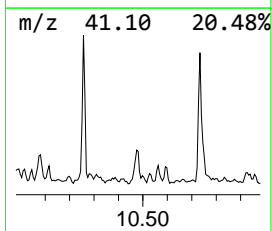
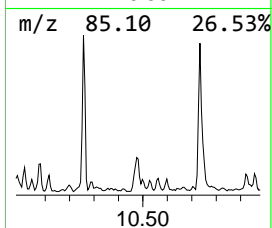
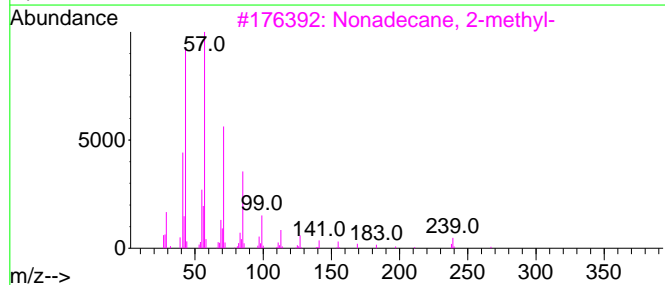
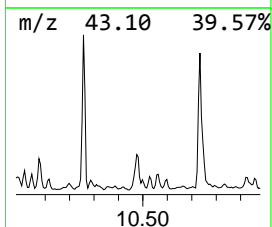
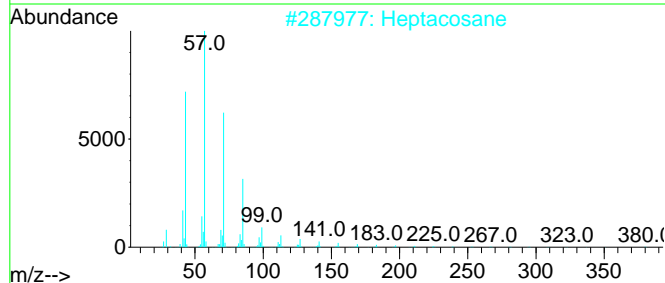
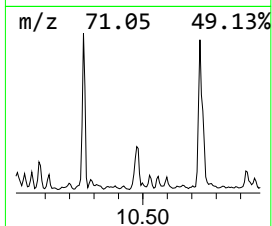
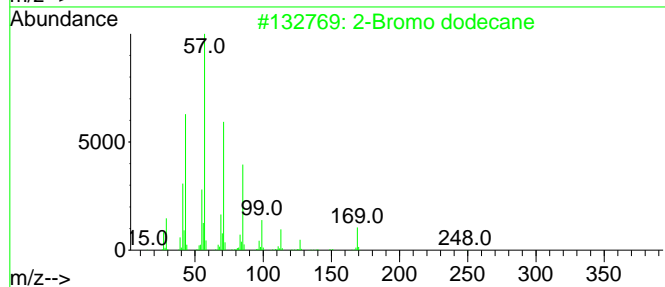
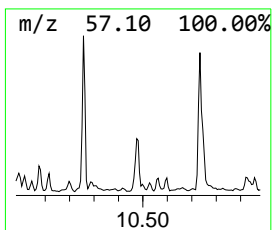
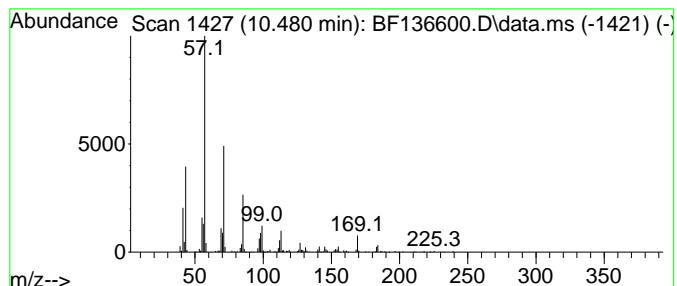
Quant Method : Z:\svoasrv\HPCHEM1\BNA_F\Methods\8270-BF120523.M
 Quant Title : ASP BNA STANDARDS FOR 5 POINT CALIBRATION

TIC Library : C:\Database\NIST20.L
 TIC Integration Parameters: LSCINT.P

 Peak Number 7 2-Bromo dodecane Concentration Rank 13

R.T.	EstConc	Area	Relative to ISTD	R.T.
10.480	21.58 ng	600758	Acenaphthene-d10	9.822

Hit#	of 5	Tentative ID	MW	MolForm	CAS#	Qual
1		2-Bromo dodecane	248	C12H25Br	013187-99-0	90
2		Heptacosane	380	C27H56	000593-49-7	80
3		Nonadecane, 2-methyl-	282	C20H42	001560-86-7	80
4		Tridecane	184	C13H28	000629-50-5	72
5		Octadecane	254	C18H38	000593-45-3	72



Data Path : Z:\svoasrv\HPCHEM1\BNA_F\Data\BF121523\
 Data File : BF136600.D
 Acq On : 15 Dec 2023 19:03
 Operator : CG\JU
 Sample : 05805-03
 Misc :
 ALS Vial : 17 Sample Multiplier: 1

Instrument :
 BNA_F
 ClientSampleId :
 HR-04-12122023

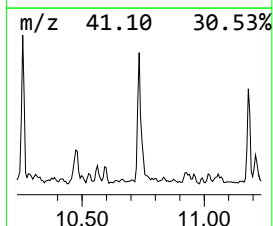
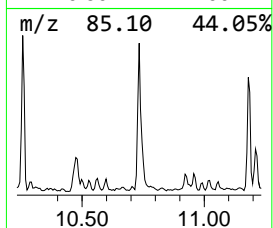
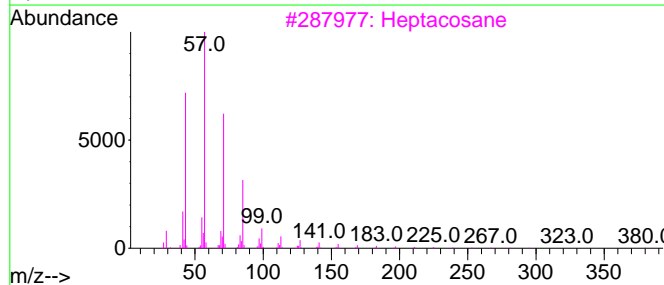
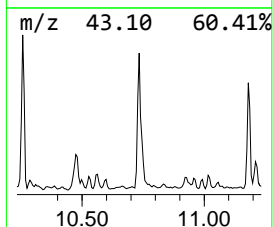
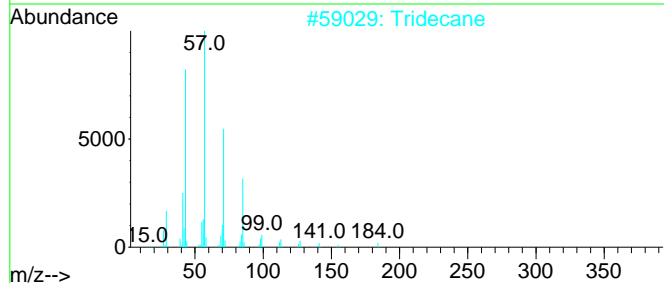
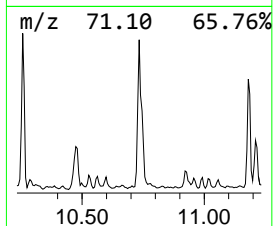
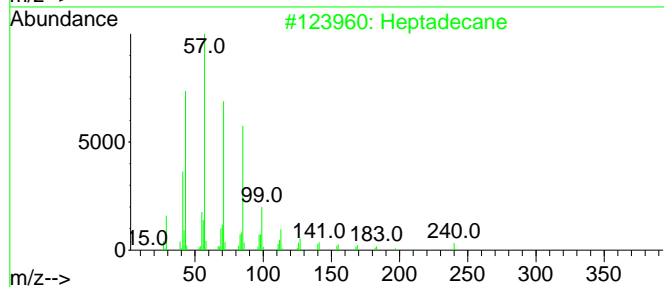
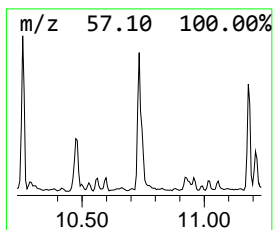
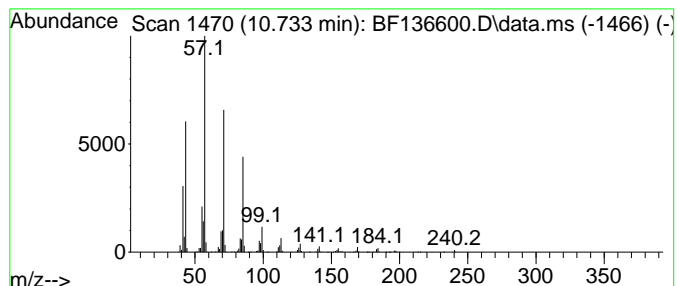
Quant Method : Z:\svoasrv\HPCHEM1\BNA_F\Methods\8270-BF120523.M
 Quant Title : ASP BNA STANDARDS FOR 5 POINT CALIBRATION

TIC Library : C:\Database\NIST20.L
 TIC Integration Parameters: LSCINT.P

 Peak Number 8 Heptadecane Concentration Rank 5

R.T.	EstConc	Area	Relative to ISTD	R.T.
10.733	52.10 ng	1451020	Phenanthrene-d10	11.310

Hit# of 5	Tentative ID	MW	MolForm	CAS#	Qual
1	Heptadecane	240	C17H36	000629-78-7	97
2	Tridecane	184	C13H28	000629-50-5	94
3	Heptacosane	380	C27H56	000593-49-7	91
4	Tetradecane	198	C14H30	000629-59-4	91
5	Nonadecane	268	C19H40	000629-92-5	91



Data Path : Z:\svoasrv\HPCHEM1\BNA_F\Data\BF121523\
 Data File : BF136600.D
 Acq On : 15 Dec 2023 19:03
 Operator : CG\JU
 Sample : 05805-03
 Misc :
 ALS Vial : 17 Sample Multiplier: 1

Instrument :
 BNA_F
 ClientSampleId :
 HR-04-12122023

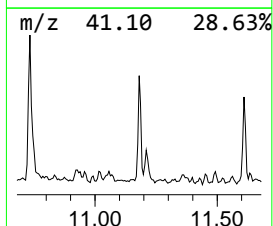
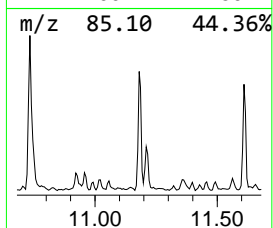
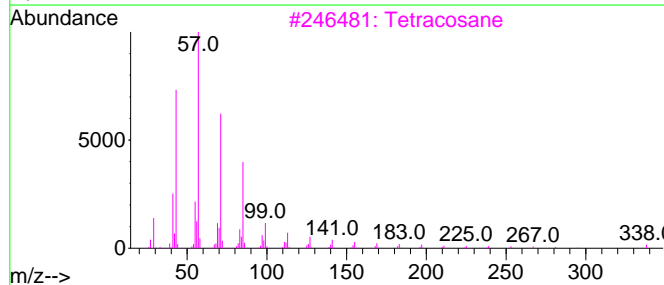
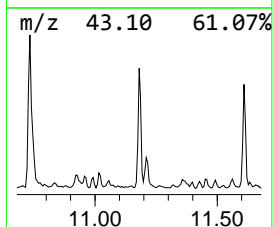
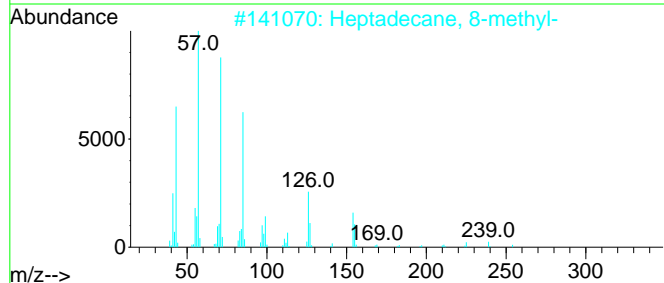
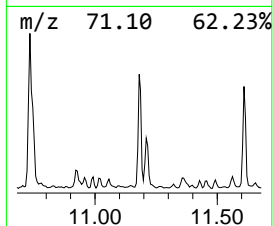
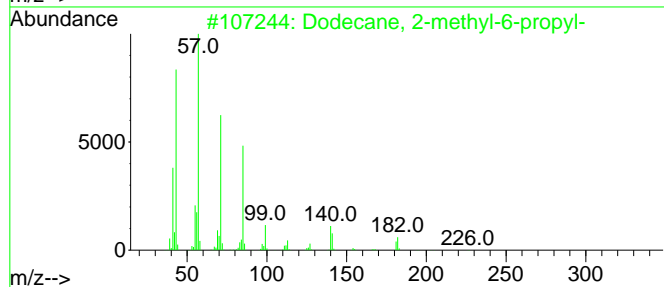
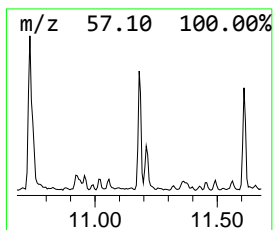
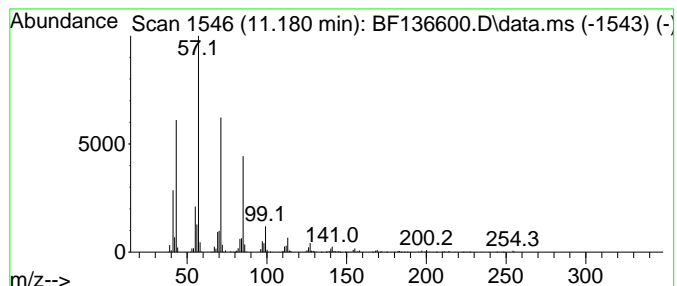
Quant Method : Z:\svoasrv\HPCHEM1\BNA_F\Methods\8270-BF120523.M
 Quant Title : ASP BNA STANDARDS FOR 5 POINT CALIBRATION

TIC Library : C:\Database\NIST20.L
 TIC Integration Parameters: LSCINT.P

 Peak Number 9 Dodecane, 2-methyl-6-propyl- Concentration Rank 9

R.T.	EstConc	Area	Relative to ISTD	R.T.
11.180	31.44 ng	875645	Phenanthrene-d10	11.310

Hit#	of 5	Tentative ID	MW	MolForm	CAS#	Qual
1		Dodecane, 2-methyl-6-propyl-	226	C16H34	055045-08-4	93
2		Heptadecane, 8-methyl-	254	C18H38	013287-23-5	91
3		Tetracosane	338	C24H50	000646-31-1	91
4		Heptacosane	380	C27H56	000593-49-7	91
5		Hexadecane	226	C16H34	000544-76-3	90



Data Path : Z:\svoasrv\HPCHEM1\BNA_F\Data\BF121523\
 Data File : BF136600.D
 Acq On : 15 Dec 2023 19:03
 Operator : CG\JU
 Sample : 05805-03
 Misc :
 ALS Vial : 17 Sample Multiplier: 1

Instrument :
 BNA_F
 ClientSampleId :
 HR-04-12122023

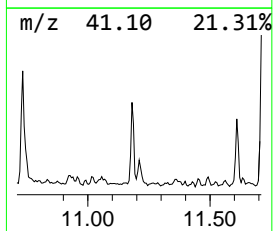
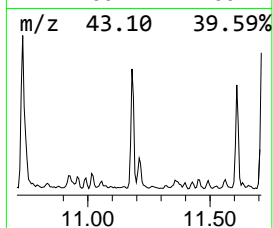
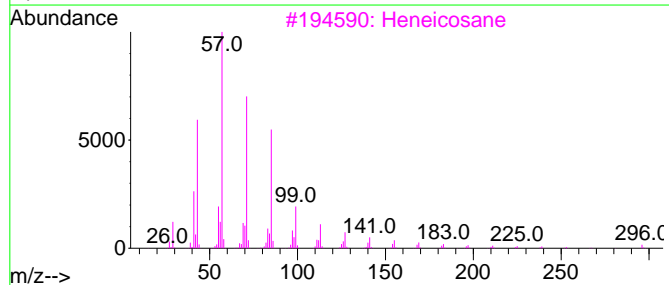
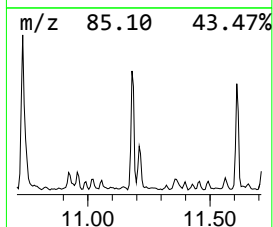
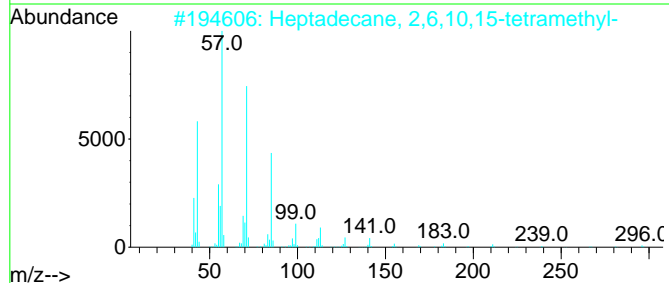
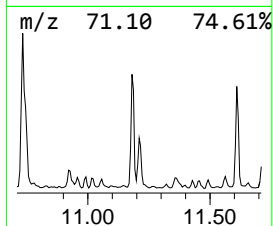
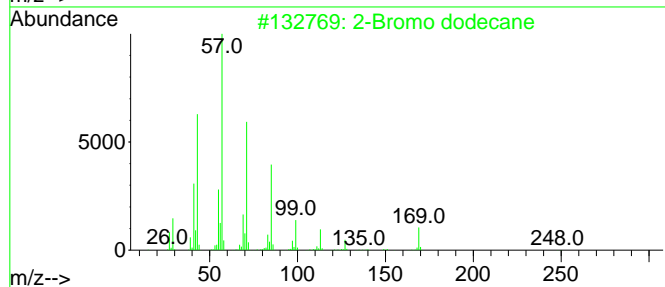
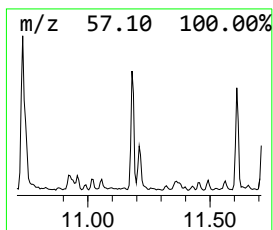
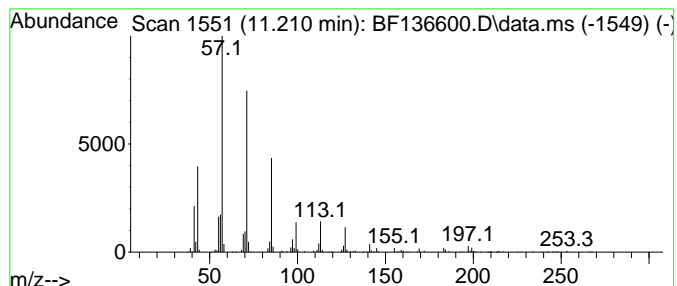
Quant Method : Z:\svoasrv\HPCHEM1\BNA_F\Methods\8270-BF120523.M
 Quant Title : ASP BNA STANDARDS FOR 5 POINT CALIBRATION

TIC Library : C:\Database\NIST20.L
 TIC Integration Parameters: LSCINT.P

 Peak Number 10 Heptadecane, 2,6,10,15-tetr... Concentration Rank 16

R.T.	EstConc	Area	Relative to ISTD	R.T.
11.210	14.41 ng	401187	Phenanthrene-d10	11.310

Hit#	of 5	Tentative ID	MW	MolForm	CAS#	Qual
1		2-Bromo dodecane	248	C12H25Br	013187-99-0	93
2		Heptadecane, 2,6,10,15-tetramethyl-	296	C21H44	054833-48-6	90
3		Heneicosane	296	C21H44	000629-94-7	90
4		Octadecane	254	C18H38	000593-45-3	90
5		Octacosane	394	C28H58	000630-02-4	86



Data Path : Z:\svoasrv\HPCHEM1\BNA_F\Data\BF121523\
 Data File : BF136600.D
 Acq On : 15 Dec 2023 19:03
 Operator : CG\JU
 Sample : 05805-03
 Misc :
 ALS Vial : 17 Sample Multiplier: 1

Instrument :
 BNA_F
 ClientSampleId :
 HR-04-12122023

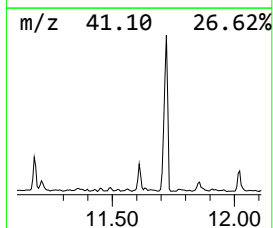
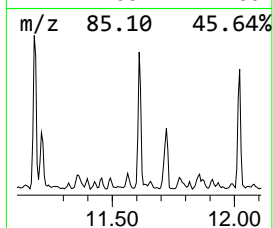
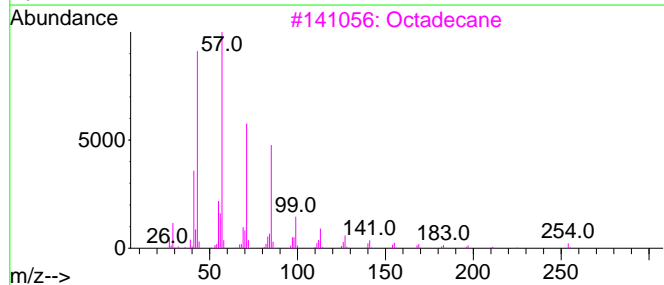
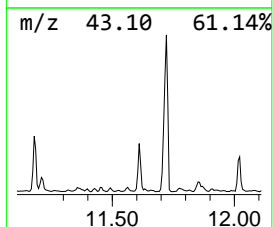
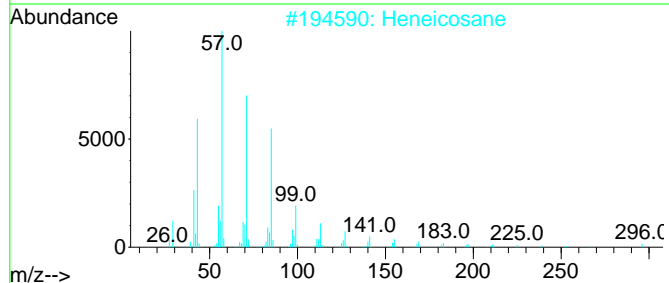
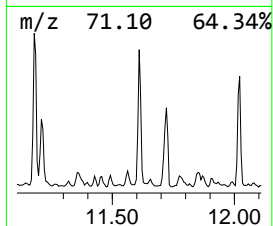
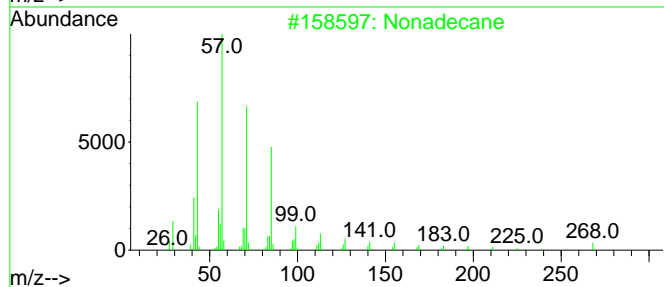
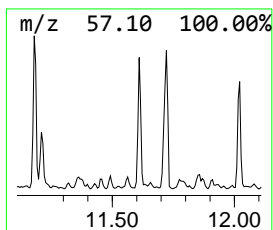
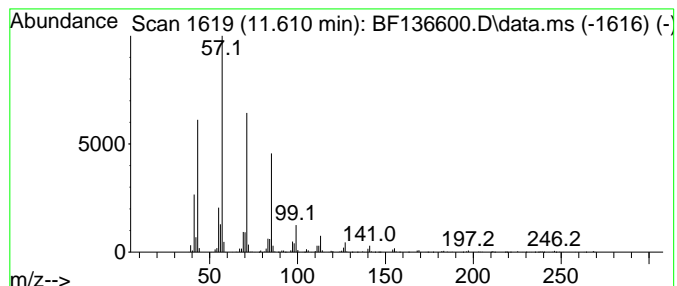
Quant Method : Z:\svoasrv\HPCHEM1\BNA_F\Methods\8270-BF120523.M
 Quant Title : ASP BNA STANDARDS FOR 5 POINT CALIBRATION

TIC Library : C:\Database\NIST20.L
 TIC Integration Parameters: LSCINT.P

 Peak Number 11 Nonadecane Concentration Rank 11

R.T.	EstConc	Area	Relative to ISTD	R.T.
11.610	25.48 ng	709656	Phenanthrene-d10	11.310

Hit#	of 5	Tentative ID	MW	MolForm	CAS#	Qual
1		Nonadecane	268	C19H40	000629-92-5	93
2		Heneicosane	296	C21H44	000629-94-7	90
3		Octadecane	254	C18H38	000593-45-3	90
4		Pentadecane	212	C15H32	000629-62-9	90
5		Hexadecane	226	C16H34	000544-76-3	90



Data Path : Z:\svoasrv\HPCHEM1\BNA_F\Data\BF121523\
 Data File : BF136600.D
 Acq On : 15 Dec 2023 19:03
 Operator : CG\JU
 Sample : 05805-03
 Misc :
 ALS Vial : 17 Sample Multiplier: 1

Instrument :
 BNA_F
 ClientSampleId :
 HR-04-12122023

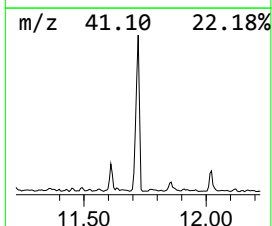
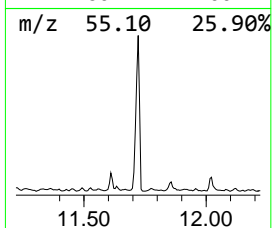
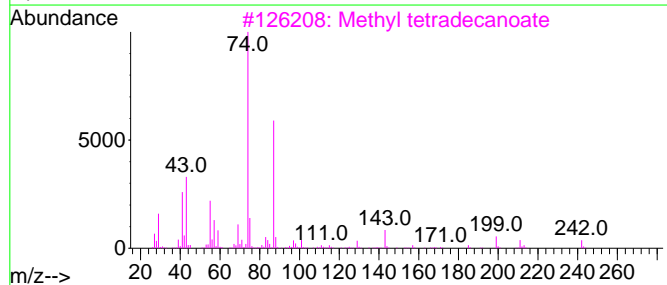
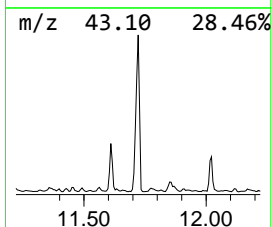
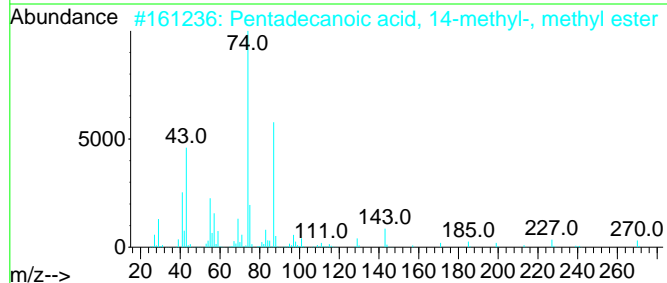
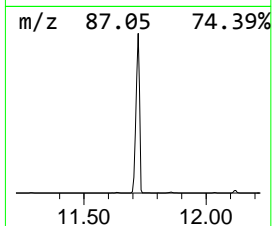
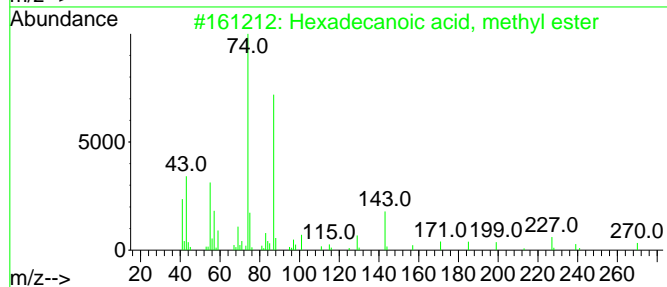
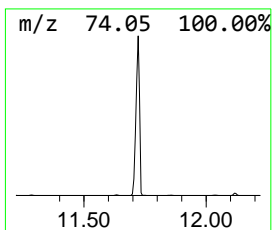
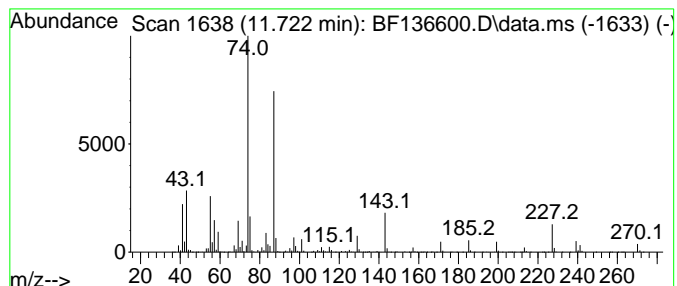
Quant Method : Z:\svoasrv\HPCHEM1\BNA_F\Methods\8270-BF120523.M
 Quant Title : ASP BNA STANDARDS FOR 5 POINT CALIBRATION

TIC Library : C:\Database\NIST20.L
 TIC Integration Parameters: LSCINT.P

 Peak Number 12 Hexadecanoic acid, methyl e... Concentration Rank 3

R.T.	EstConc	Area	Relative to ISTD	R.T.
11.722	241.92 ng	6737090	Phenanthrene-d10	11.310

Hit#	of	5	Tentative ID	MW	MolForm	CAS#	Qual
1			Hexadecanoic acid, methyl ester	270	C17H34O2	000112-39-0	98
2			Pentadecanoic acid, 14-methyl-, ...	270	C17H34O2	005129-60-2	93
3			Methyl tetradecanoate	242	C15H30O2	000124-10-7	91
4			Tridecanoic acid, methyl ester	228	C14H28O2	001731-88-0	90
5			Pentadecanoic acid, methyl ester	256	C16H32O2	007132-64-1	86



Data Path : Z:\svoasrv\HPCHEM1\BNA_F\Data\BF121523\
 Data File : BF136600.D
 Acq On : 15 Dec 2023 19:03
 Operator : CG\JU
 Sample : 05805-03
 Misc :
 ALS Vial : 17 Sample Multiplier: 1

Instrument :
 BNA_F
 ClientSampleId :
 HR-04-12122023

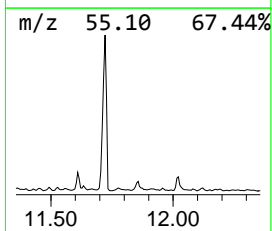
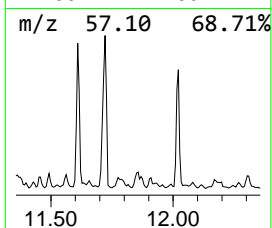
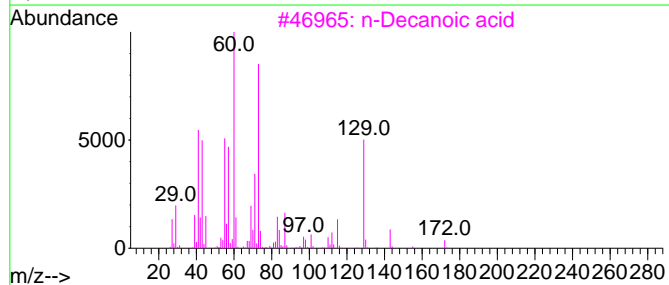
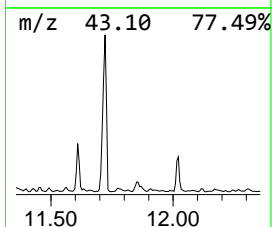
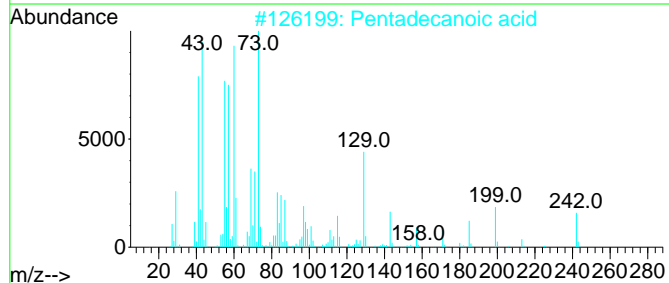
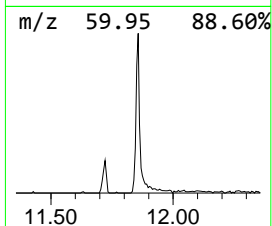
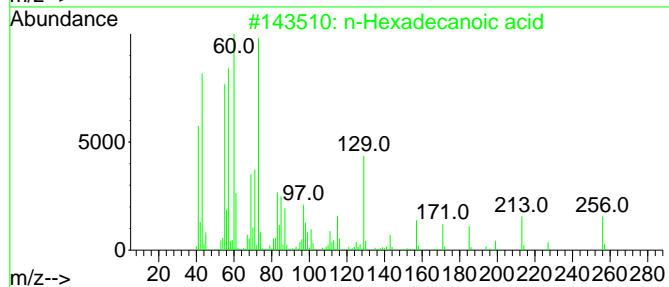
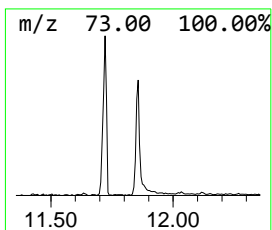
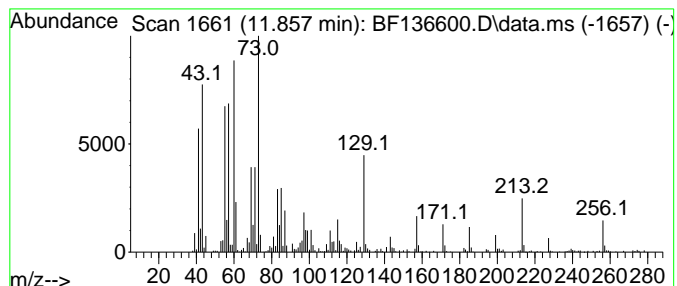
Quant Method : Z:\svoasrv\HPCHEM1\BNA_F\Methods\8270-BF120523.M
 Quant Title : ASP BNA STANDARDS FOR 5 POINT CALIBRATION

TIC Library : C:\Database\NIST20.L
 TIC Integration Parameters: LSCINT.P

 Peak Number 13 n-Hexadecanoic acid Concentration Rank 14

R.T.	EstConc	Area	Relative to ISTD	R.T.
11.857	15.24 ng	424378	Phenanthrene-d10	11.310

Hit#	of	5	Tentative ID	MW	MolForm	CAS#	Qual
1			n-Hexadecanoic acid	256	C16H32O2	000057-10-3	99
2			Pentadecanoic acid	242	C15H30O2	001002-84-2	93
3			n-Decanoic acid	172	C10H20O2	000334-48-5	89
4			Tridecanoic acid	214	C13H26O2	000638-53-9	87
5			Tetradecanoic acid	228	C14H28O2	000544-63-8	83



Data Path : Z:\svoasrv\HPCHEM1\BNA_F\Data\BF121523\
 Data File : BF136600.D
 Acq On : 15 Dec 2023 19:03
 Operator : CG\JU
 Sample : 05805-03
 Misc :
 ALS Vial : 17 Sample Multiplier: 1

Instrument :
 BNA_F
 ClientSampleId :
 HR-04-12122023

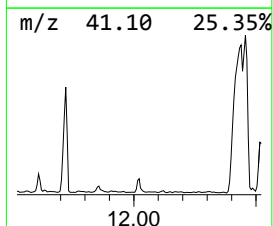
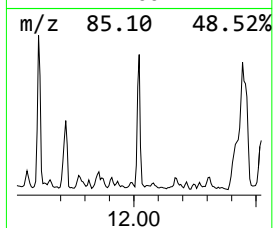
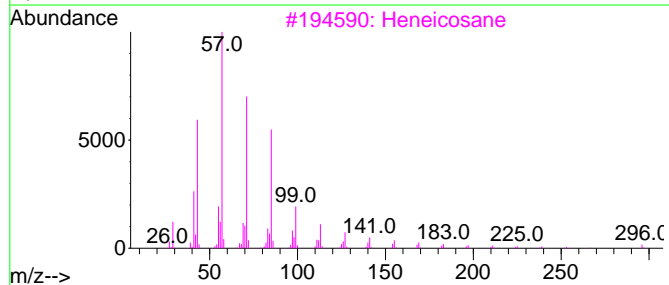
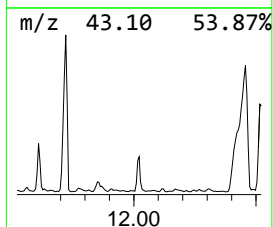
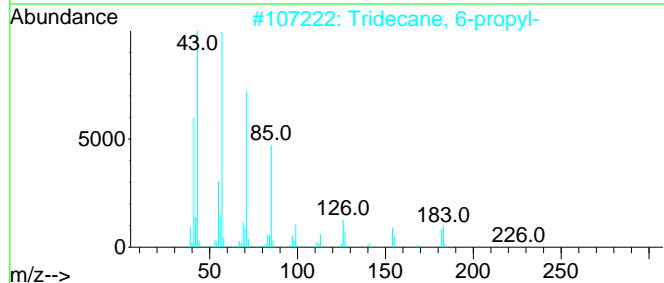
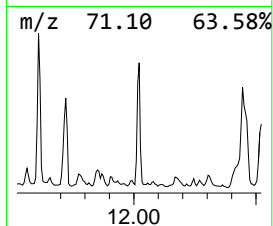
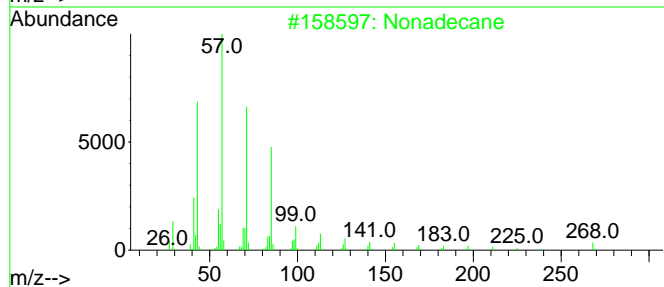
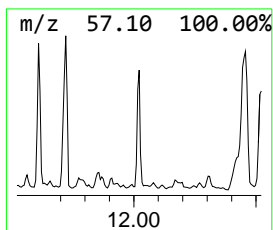
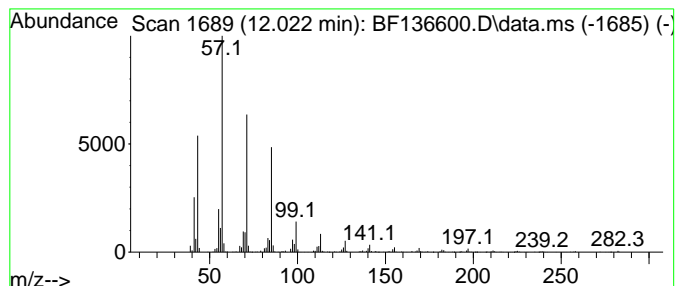
Quant Method : Z:\svoasrv\HPCHEM1\BNA_F\Methods\8270-BF120523.M
 Quant Title : ASP BNA STANDARDS FOR 5 POINT CALIBRATION

TIC Library : C:\Database\NIST20.L
 TIC Integration Parameters: LSCINT.P

 Peak Number 14 Tridecane, 6-propyl- Concentration Rank 10

R.T.	EstConc	Area	Relative to ISTD	R.T.
12.022	25.57 ng	712201	Phenanthrene-d10	11.310

Hit#	of 5	Tentative ID	MW	MolForm	CAS#	Qual
1		Nonadecane	268	C19H40	000629-92-5	91
2		Tridecane, 6-propyl-	226	C16H34	055045-10-8	90
3		Heneicosane	296	C21H44	000629-94-7	87
4		Tetradecane, 1-iodo-	324	C14H29I	019218-94-1	87
5		Tridecane, 7-propyl-	226	C16H34	055045-09-5	87



Data Path : Z:\svoasrv\HPCHEM1\BNA_F\Data\BF121523\
 Data File : BF136600.D
 Acq On : 15 Dec 2023 19:03
 Operator : CG\JU
 Sample : 05805-03
 Misc :
 ALS Vial : 17 Sample Multiplier: 1

Instrument :
 BNA_F
 ClientSampleId :
 HR-04-12122023

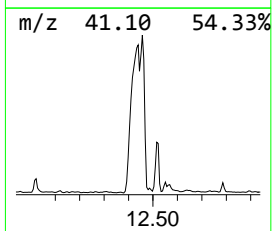
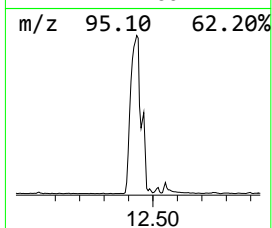
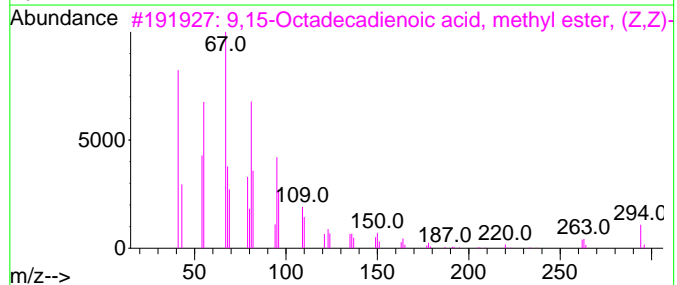
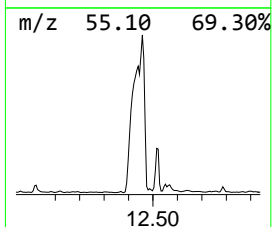
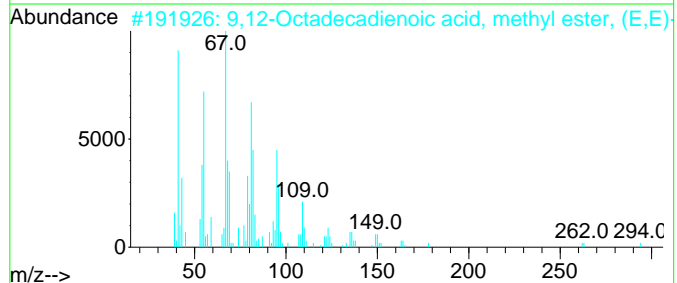
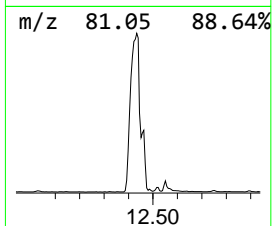
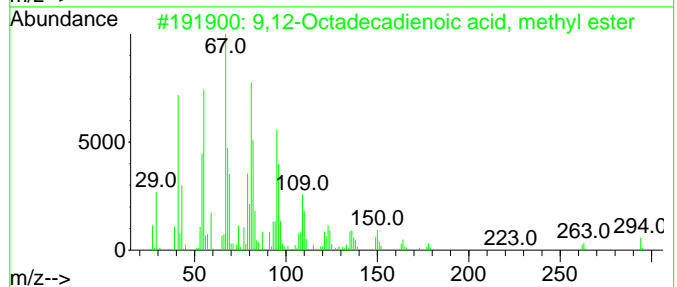
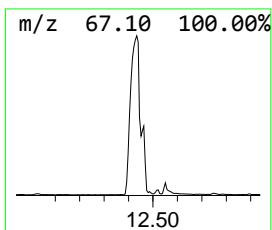
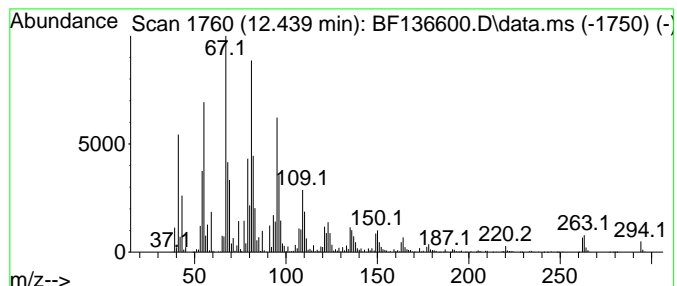
Quant Method : Z:\svoasrv\HPCHEM1\BNA_F\Methods\8270-BF120523.M
 Quant Title : ASP BNA STANDARDS FOR 5 POINT CALIBRATION

TIC Library : C:\Database\NIST20.L
 TIC Integration Parameters: LSCINT.P

 Peak Number 15 9,12-Octadecadienoic acid, ... Concentration Rank 1

R.T.	EstConc	Area	Relative to ISTD	R.T.
12.439	826.69 ng	23021800	Phenanthrene-d10	11.310

Hit#	of	5	Tentative ID	MW	MolForm	CAS#	Qual
1			9,12-Octadecadienoic acid, methy...	294	C19H34O2	002462-85-3	99
2			9,12-Octadecadienoic acid, methy...	294	C19H34O2	002566-97-4	99
3			9,15-Octadecadienoic acid, methy...	294	C19H34O2	017309-05-6	99
4			9,12-Octadecadienoic acid (Z,Z)-...	294	C19H34O2	000112-63-0	99
5			Methyl 9-cis,11-trans-octadecadi...	294	C19H34O2	013058-52-1	99



Data Path : Z:\svoasrv\HPCHEM1\BNA_F\Data\BF121523\
 Data File : BF136600.D
 Acq On : 15 Dec 2023 19:03
 Operator : CG\JU
 Sample : 05805-03
 Misc :
 ALS Vial : 17 Sample Multiplier: 1

Instrument :
 BNA_F
 ClientSampleId :
 HR-04-12122023

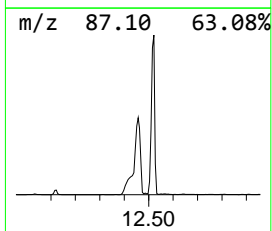
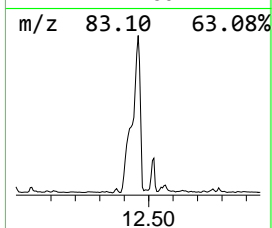
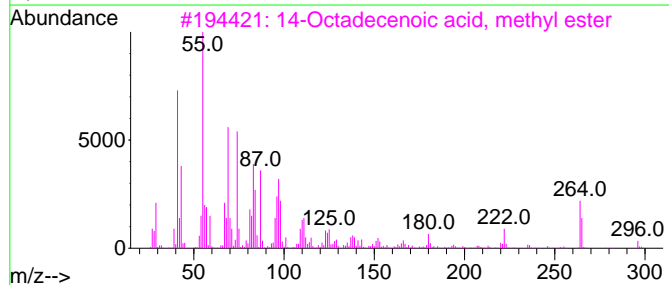
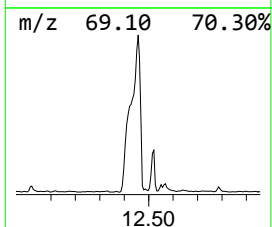
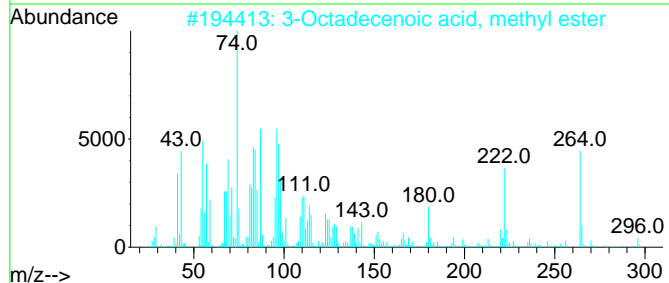
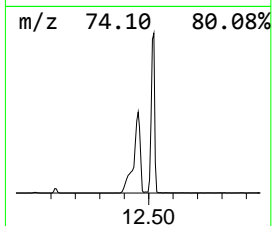
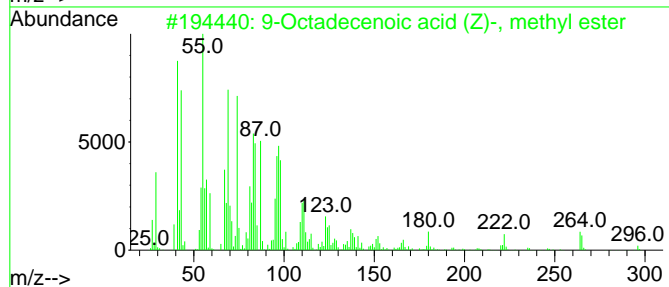
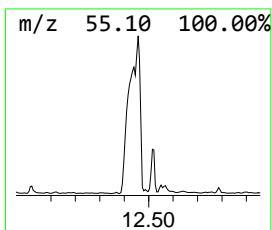
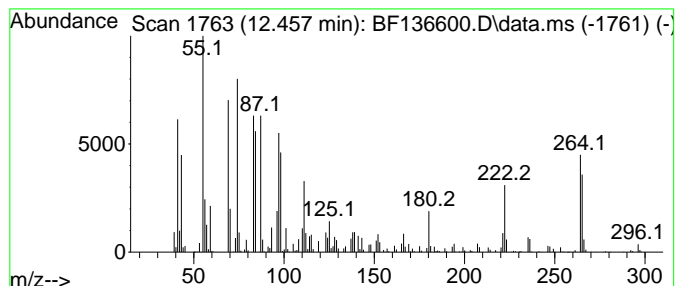
Quant Method : Z:\svoasrv\HPCHEM1\BNA_F\Methods\8270-BF120523.M
 Quant Title : ASP BNA STANDARDS FOR 5 POINT CALIBRATION

TIC Library : C:\Database\NIST20.L
 TIC Integration Parameters: LSCINT.P

 Peak Number 16 9-Octadecenoic acid (Z)-, m... Concentration Rank 2

R.T.	EstConc	Area	Relative to ISTD	R.T.
12.457	386.33 ng	10758500	Phenanthrene-d10	11.310

Hit#	of 5	Tentative ID	MW	MolForm	CAS#	Qual
1		9-Octadecenoic acid (Z)-, methyl...	296	C19H36O2	000112-62-9	90
2		3-Octadecenoic acid, methyl ester	296	C19H36O2	056599-33-8	90
3		14-Octadecenoic acid, methyl ester	296	C19H36O2	056554-48-4	90
4		11-Octadecenoic acid, methyl est...	296	C19H36O2	001937-63-9	90
5		12-Octadecenoic acid, methyl ester	296	C19H36O2	056554-46-2	90



Data Path : Z:\svoasrv\HPCHEM1\BNA_F\Data\BF121523\
 Data File : BF136600.D
 Acq On : 15 Dec 2023 19:03
 Operator : CG\JU
 Sample : 05805-03
 Misc :
 ALS Vial : 17 Sample Multiplier: 1

Instrument :
 BNA_F
 ClientSampleId :
 HR-04-12122023

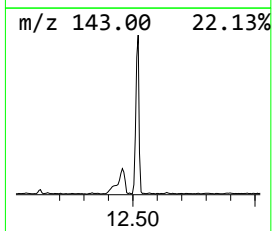
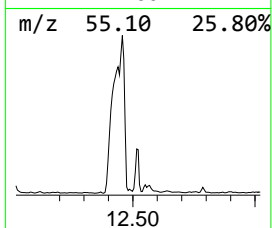
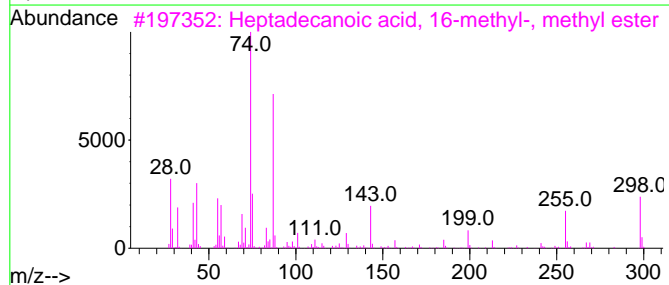
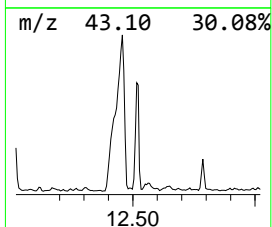
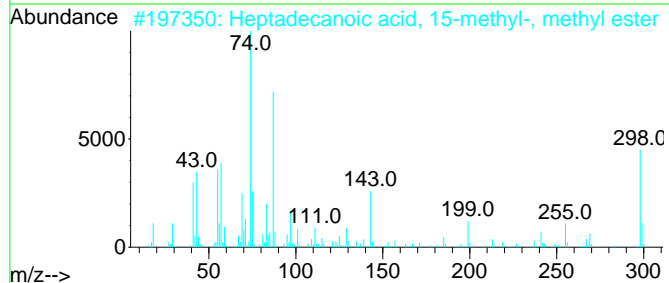
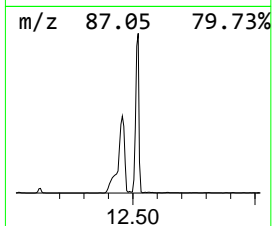
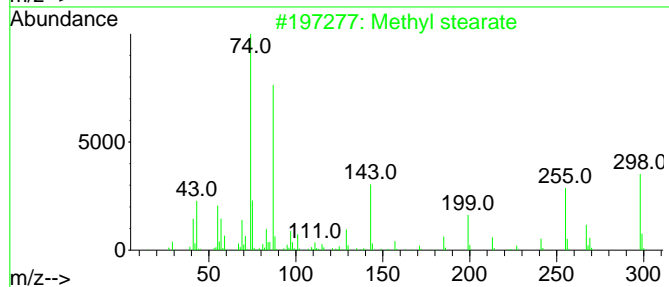
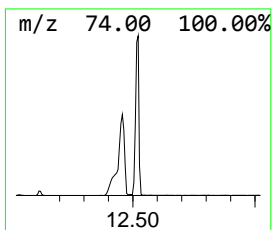
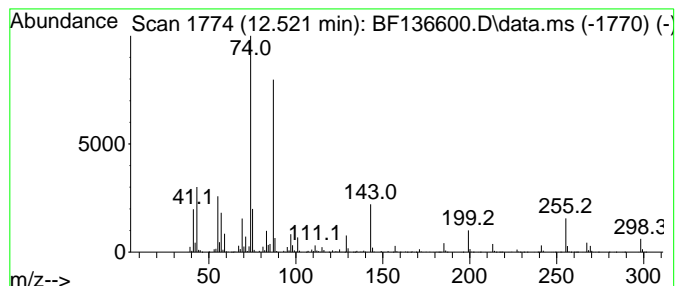
Quant Method : Z:\svoasrv\HPCHEM1\BNA_F\Methods\8270-BF120523.M
 Quant Title : ASP BNA STANDARDS FOR 5 POINT CALIBRATION

TIC Library : C:\Database\NIST20.L
 TIC Integration Parameters: LSCINT.P

 Peak Number 17 Methyl stearate Concentration Rank 4

R.T.	EstConc	Area	Relative to ISTD	R.T.
12.522	120.94 ng	3367870	Phenanthrene-d10	11.310

Hit#	of 5	Tentative ID	MW	MolForm	CAS#	Qual
1		Methyl stearate	298	C19H38O2	000112-61-8	98
2		Heptadecanoic acid, 15-methyl-, ...	298	C19H38O2	054833-55-5	91
3		Heptadecanoic acid, 16-methyl-, ...	298	C19H38O2	005129-61-3	90
4		Methyl tetradecanoate	242	C15H30O2	000124-10-7	87
5		Heptadecanoic acid, methyl ester	284	C18H36O2	001731-92-6	80



Data Path : Z:\svoasrv\HPCHEM1\BNA_F\Data\BF121523\
 Data File : BF136600.D
 Acq On : 15 Dec 2023 19:03
 Operator : CG\JU
 Sample : 05805-03
 Misc :
 ALS Vial : 17 Sample Multiplier: 1

Instrument :
 BNA_F
 ClientSampleId :
 HR-04-12122023

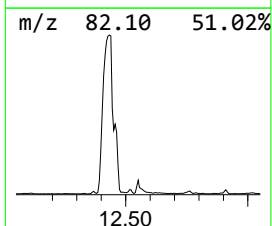
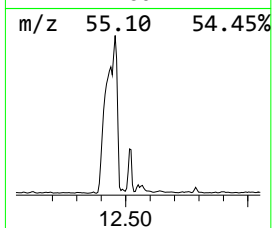
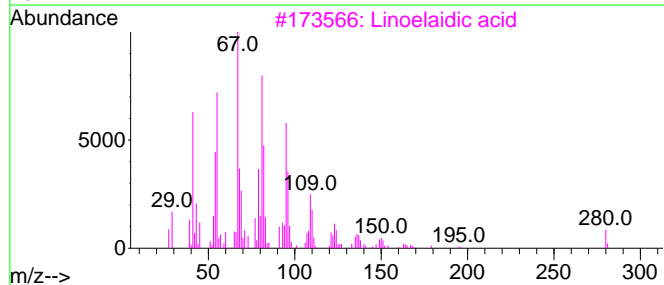
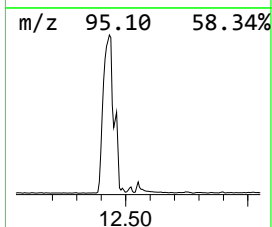
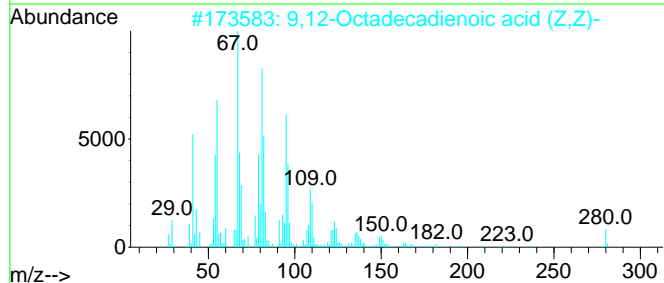
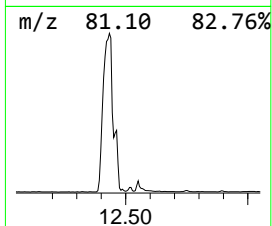
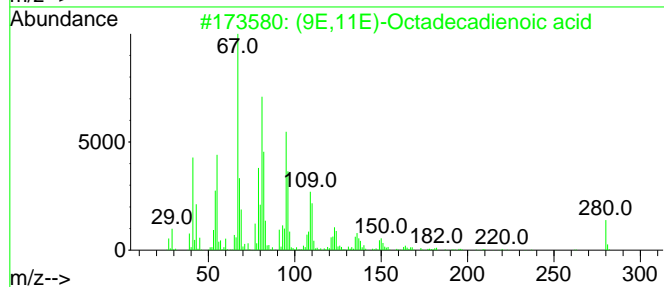
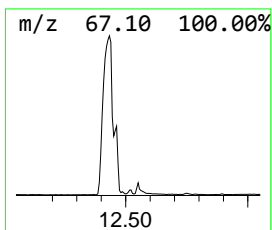
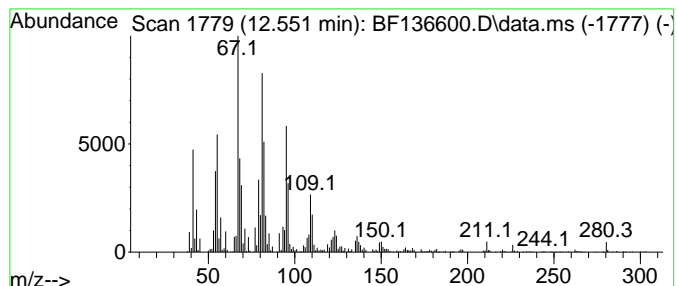
Quant Method : Z:\svoasrv\HPCHEM1\BNA_F\Methods\8270-BF120523.M
 Quant Title : ASP BNA STANDARDS FOR 5 POINT CALIBRATION

TIC Library : C:\Database\NIST20.L
 TIC Integration Parameters: LSCINT.P

 Peak Number 18 (9E,11E)-Octadecadienoic acid Concentration Rank 18

R.T.	EstConc	Area	Relative to ISTD	R.T.
12.551	14.22 ng	395924	Phenanthrene-d10	11.310

Hit#	of	5	Tentative ID	MW	MolForm	CAS#	Qual
1			(9E,11E)-Octadecadienoic acid	280	C18H32O2	000544-71-8	98
2			9,12-Octadecadienoic acid (Z,Z)-	280	C18H32O2	000060-33-3	96
3			Linoleic acid	280	C18H32O2	000506-21-8	96
4			10E,12Z-Octadecadienoic acid	280	C18H32O2	002420-56-6	96
5			8-Dodecen-1-ol, (Z)-	184	C12H24O	040642-40-8	93



Data Path : Z:\svoasrv\HPCHEM1\BNA_F\Data\BF121523\
 Data File : BF136600.D
 Acq On : 15 Dec 2023 19:03
 Operator : CG\JU
 Sample : 05805-03
 Misc :
 ALS Vial : 17 Sample Multiplier: 1

Instrument :
 BNA_F
 ClientSampleId :
 HR-04-12122023

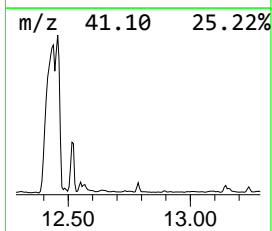
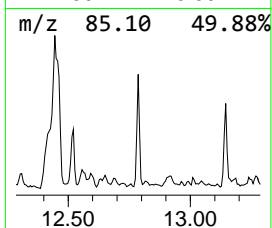
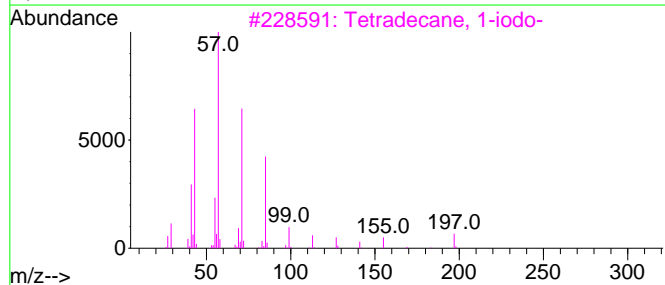
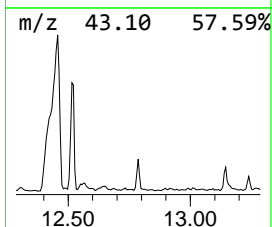
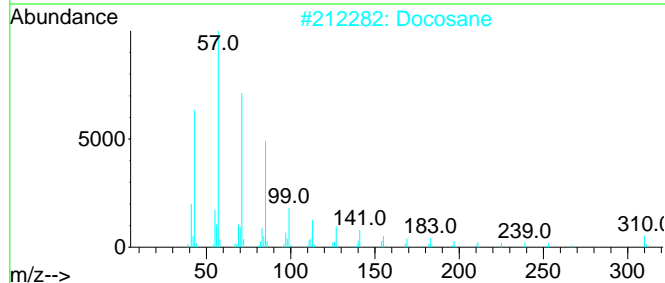
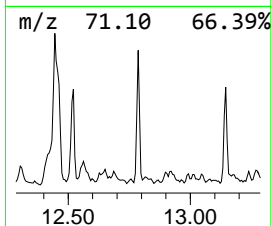
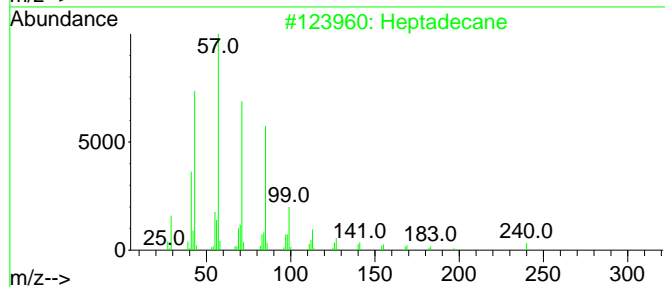
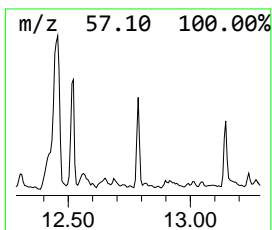
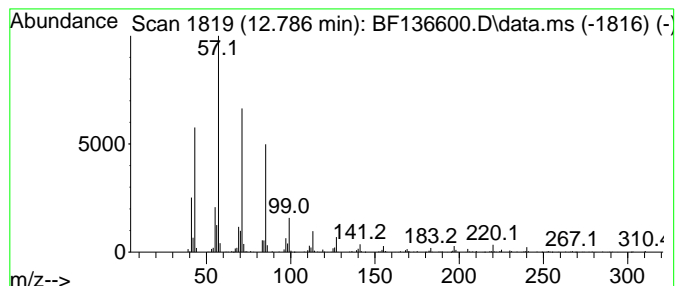
Quant Method : Z:\svoasrv\HPCHEM1\BNA_F\Methods\8270-BF120523.M
 Quant Title : ASP BNA STANDARDS FOR 5 POINT CALIBRATION

TIC Library : C:\Database\NIST20.L
 TIC Integration Parameters: LSCINT.P

 Peak Number 19 Docosane Concentration Rank 17

R.T.	EstConc	Area	Relative to ISTD	R.T.
12.786	14.35 ng	406046	Chrysene-d12	13.963

Hit#	of 5	Tentative ID	MW	MolForm	CAS#	Qual
1		Heptadecane	240	C17H36	000629-78-7	94
2		Docosane	310	C22H46	000629-97-0	93
3		Tetradecane, 1-iodo-	324	C14H29I	019218-94-1	91
4		Tetradecane	198	C14H30	000629-59-4	91
5		Tridecane, 1-iodo-	310	C13H27I	035599-77-0	91



Data Path : Z:\svoasrv\HPCHEM1\BNA_F\Data\BF121523\
 Data File : BF136600.D
 Acq On : 15 Dec 2023 19:03
 Operator : CG\JU
 Sample : 05805-03
 Misc :
 ALS Vial : 17 Sample Multiplier: 1

Instrument :
 BNA_F
 ClientSampleId :
 HR-04-12122023

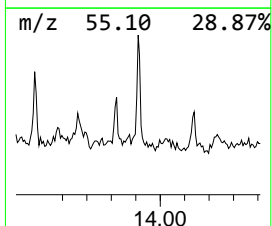
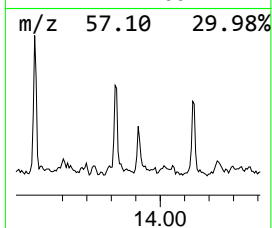
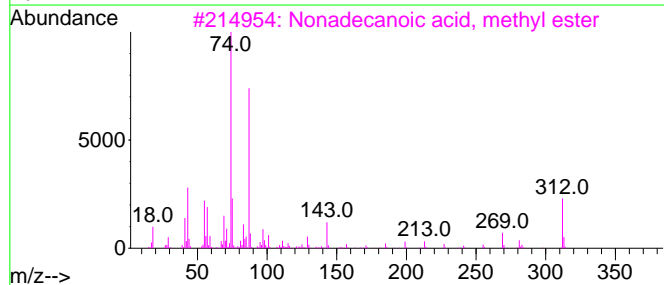
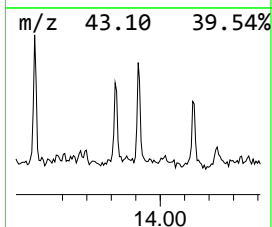
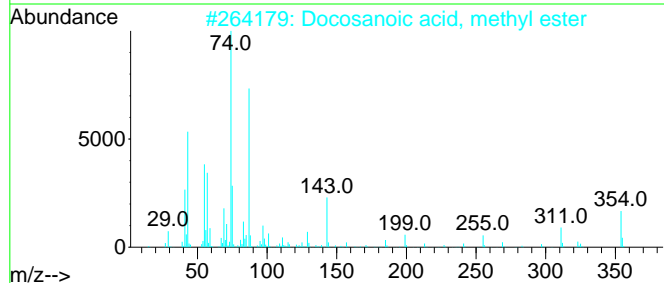
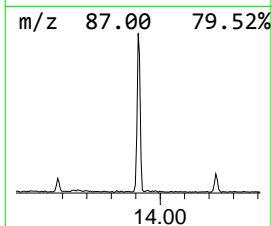
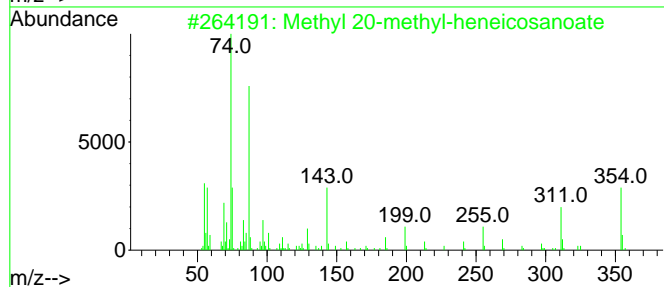
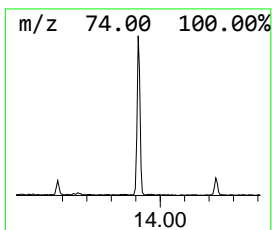
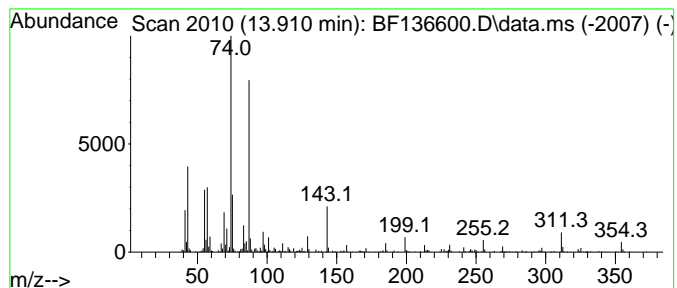
Quant Method : Z:\svoasrv\HPCHEM1\BNA_F\Methods\8270-BF120523.M
 Quant Title : ASP BNA STANDARDS FOR 5 POINT CALIBRATION

TIC Library : C:\Database\NIST20.L
 TIC Integration Parameters: LSCINT.P

 Peak Number 20 Methyl 20-methyl-heneicosan... Concentration Rank 19

R.T.	EstConc	Area	Relative to ISTD	R.T.
13.910	14.10 ng	398924	Chrysene-d12	13.963

Hit#	of 5	Tentative ID	MW	MolForm	CAS#	Qual
1		Methyl 20-methyl-heneicosanoate	354	C23H46O2	1000336-47-4	98
2		Docosanoic acid, methyl ester	354	C23H46O2	000929-77-1	98
3		Nonadecanoic acid, methyl ester	312	C20H40O2	001731-94-8	97
4		Heneicosanoic acid, methyl ester	340	C22H44O2	006064-90-0	87
5		Methyl stearate	298	C19H38O2	000112-61-8	87



Data Path : Z:\svoasrv\HPCHEM1\BNA_F\Data\BF121523\
 Data File : BF136600.D
 Acq On : 15 Dec 2023 19:03
 Operator : CG\JU
 Sample : 05805-03
 Misc :
 ALS Vial : 17 Sample Multiplier: 1

Instrument :
 BNA_F
 ClientSampleId :
 HR-04-12122023

Quant Method : Z:\svoasrv\HPCHEM1\BNA_F\Methods\8270-BF120523.M
 Quant Title : ASP BNA STANDARDS FOR 5 POINT CALIBRATION

TIC Library : C:\Database\NIST0.L
 TIC Integration Parameters: LSCINT.P

TIC Top Hit name	RT	EstConc	Units	Response	--Internal Standard--			
					#	RT	Resp	Conc
Tridecane	8.657	14.9	ng	1173350	2	8.063	1571670	20.0
Decane, 2,3,5-t...	9.228	52.0	ng	1447940	3	9.822	556749	20.0
Carbonic acid, ...	9.545	23.5	ng	653824	3	9.822	556749	20.0
Hexadecane	9.757	43.6	ng	1212790	3	9.822	556749	20.0
Heptacosane, 1-...	10.081	13.7	ng	381368	3	9.822	556749	20.0
Pentadecane, 7-...	10.257	42.6	ng	1185080	3	9.822	556749	20.0
2-Bromo dodecane	10.480	21.6	ng	600758	3	9.822	556749	20.0
Heptadecane	10.733	52.1	ng	1451020	4	11.310	556962	20.0
Dodecane, 2-met...	11.180	31.4	ng	875645	4	11.310	556962	20.0
Heptadecane, 2,...	11.210	14.4	ng	401187	4	11.310	556962	20.0
Nonadecane	11.610	25.5	ng	709656	4	11.310	556962	20.0
Hexadecanoic ac...	11.722	241.9	ng	6737090	4	11.310	556962	20.0
n-Hexadecanoic ...	11.857	15.2	ng	424378	4	11.310	556962	20.0
Tridecane, 6-pr...	12.022	25.6	ng	712201	4	11.310	556962	20.0
9,12-Octadecadi...	12.439	826.7	ng	23021800	4	11.310	556962	20.0
9-Octadecenoic ...	12.457	386.3	ng	10758500	4	11.310	556962	20.0
Methyl stearate	12.522	120.9	ng	3367870	4	11.310	556962	20.0
(9E,11E)-Octade...	12.551	14.2	ng	395924	4	11.310	556962	20.0
Docosane	12.786	14.4	ng	406046	5	13.963	565963	20.0
Methyl 20-methy...	13.910	14.1	ng	398924	5	13.963	565963	20.0