

Data Path : Z:\HPCHEM1\BNA_F\DATA\BF121815\
 Data File : BF083900.D
 Acq On : 18 Dec 2015 6:40
 Operator : UM/SJ
 Sample : G4759-01
 Misc :
 ALS Vial : 21 Sample Multiplier: 1

Instrument :
 BNA_F
 ClientSampleId :
 K210-0-2

Integration Parameters: rteint.p
 Integrator: RTE
 Smoothing : ON Filtering: 5
 Sampling : 1 Min Area: 3 % of largest Peak
 Start Thrs: 0.2 Max Peaks: 100
 Stop Thrs : 0 Peak Location: TOP

If leading or trailing edge < 100 prefer < Baseline drop else tangent >
 Peak separation: 5

Method : Z:\HPCHEM1\BNA_F\METHODS\8270-BF121815.M
 Title : ASP BNA STANDARDS FOR 5 POINT CALIBRATION

Signal : TIC

peak #	R.T. min	first scan	max scan	last scan	PK TY	peak height	corr. area	corr. % max.	% of total
1	2.487	30	35	37	rBV2	46330	76365	3.46%	0.287%
2	2.544	37	40	46	rVB	38215	65702	2.97%	0.247%
3	3.127	87	91	96	rBV2	16618	58036	2.63%	0.218%
4	4.098	174	176	179	rVB	38533	53152	2.41%	0.200%
5	4.453	204	207	213	rVB	52649	83671	3.79%	0.314%
6	4.693	224	228	234	rBV4	54250	154030	6.97%	0.578%
7	5.059	257	260	263	rVB	171672	243367	11.02%	0.914%
8	5.104	263	264	266	rBV	33202	45884	2.08%	0.172%
9	5.264	276	278	280	rBV2	40881	89673	4.06%	0.337%
10	5.481	294	297	300	rBV	857346	1210633	54.80%	4.546%
11	5.996	340	342	344	rBV	43529	47600	2.15%	0.179%
12	6.156	353	356	357	rBV	128949	167739	7.59%	0.630%
13	6.190	357	359	362	rVB3	33579	69461	3.14%	0.261%
14	6.316	366	370	374	rVB2	110704	159390	7.21%	0.599%
15	6.384	374	376	381	rVB2	80329	126595	5.73%	0.475%
16	6.464	381	383	385	rBV3	19932	45915	2.08%	0.172%
17	6.522	385	388	390	rBV	1113150	1228775	55.62%	4.614%
18	6.579	391	393	394	rVV	163943	145031	6.56%	0.545%
19	6.647	396	399	401	rVB	1338263	1217496	55.11%	4.572%
20	6.693	402	403	407	rBV3	184354	246624	11.16%	0.926%
21	6.876	416	419	421	rBV	535814	478385	21.65%	1.796%
22	6.944	422	425	428	rBV4	162726	293830	13.30%	1.103%
23	7.002	428	430	431	rBV	174187	202216	9.15%	0.759%
24	7.036	431	433	435	rBV	1284907	1125969	50.96%	4.228%
25	7.139	440	442	445	rVB3	38829	51152	2.32%	0.192%
26	7.196	445	447	449	rBV	51064	82175	3.72%	0.309%
27	7.287	452	455	459	rVB6	40372	105255	4.76%	0.395%
28	7.436	466	468	471	rVB	590027	691144	31.28%	2.595%
29	7.585	477	481	484	rVB3	87522	202480	9.16%	0.760%
30	7.733	490	494	496	rVB3	112718	207690	9.40%	0.780%
31	7.790	496	499	501	rBV2	40748	77486	3.51%	0.291%
32	7.905	507	509	513	rVB2	189436	222831	10.09%	0.837%
33	7.962	513	514	516	rBV2	39594	51030	2.31%	0.192%
34	8.019	516	519	521	rVB2	45087	79731	3.61%	0.299%

Data Path : Z:\HPCHEM1\BNA_F\DATA\BF121815\
 Data File : BF083900.D
 Acq On : 18 Dec 2015 6:40
 Operator : UM/SJ
 Sample : G4759-01
 Misc :
 ALS Vial : 21 Sample Multiplier: 1

Instrument :
 BNA_F
 ClientSampleId :
 K210-0-2

Integration Parameters: rteint.p
 Integrator: RTE
 Smoothing : ON
 Sampling : 1
 Start Thrs: 0.2
 Stop Thrs : 0

Filtering: 5
 Min Area: 3 % of largest Peak
 Max Peaks: 100
 Peak Location: TOP

If leading or trailing edge < 100 prefer < Baseline drop else tangent >
 Peak separation: 5

Method : Z:\HPCHEM1\BNA_F\METHODS\8270-BF121815.M
 Title : ASP BNA STANDARDS FOR 5 POINT CALIBRATION

35	8.065	521	523	525	rBV	133744	132821	6.01%	0.499%
36	8.156	529	531	534	rVV	532002	600851	27.20%	2.256%
37	8.202	534	535	538	rVV2	54294	73319	3.32%	0.275%
38	8.259	538	540	541	rVB	55216	69049	3.13%	0.259%
39	8.442	554	556	557	rBV2	43690	59587	2.70%	0.224%
40	8.522	561	563	566	rBV2	26960	69753	3.16%	0.262%
41	8.647	572	574	578	rBV	55678	60416	2.73%	0.227%
42	8.739	580	582	583	rBV	68688	63916	2.89%	0.240%
43	8.842	589	591	592	rBV	120232	118583	5.37%	0.445%
44	8.876	592	594	597	rVV2	128950	190074	8.60%	0.714%
45	8.922	597	598	601	rVB2	45376	58205	2.63%	0.219%
46	9.127	612	616	619	rVB3	55311	114102	5.16%	0.428%
47	9.242	624	626	628	rVB	1351315	1446499	65.47%	5.432%
48	9.310	631	632	634	rBV2	87038	119593	5.41%	0.449%
49	9.356	634	636	637	rVB2	160061	121836	5.51%	0.457%
50	9.436	642	643	645	rBV	48545	57009	2.58%	0.214%
51	9.573	653	655	657	rBV	233575	234093	10.60%	0.879%
52	9.630	658	660	662	rVB	360975	365938	16.56%	1.374%
53	9.676	662	664	666	rBV2	38430	46979	2.13%	0.176%
54	9.768	670	672	673	rBV	89637	107078	4.85%	0.402%
55	9.916	682	685	687	rBV2	682505	996943	45.12%	3.743%
56	10.110	700	702	704	rBV2	121262	153164	6.93%	0.575%
57	10.213	709	711	713	rBV3	80565	127552	5.77%	0.479%
58	10.705	752	754	757	rBV3	541366	950739	43.03%	3.570%
59	10.865	766	768	770	rBV	305693	269789	12.21%	1.013%
60	11.265	801	803	805	rBV	460079	517974	23.44%	1.945%
61	11.882	855	857	859	rBV	567145	808300	36.59%	3.035%
62	12.294	891	893	894	rBV	770688	1098606	49.73%	4.125%
63	14.591	1092	1094	1097	rVB	865066	1053061	47.66%	3.954%
64	14.888	1118	1120	1122	rBV	596133	694971	31.46%	2.610%
65	15.780	1196	1198	1204	rVB	794584	1390530	62.94%	5.221%
66	15.985	1213	1216	1221	rVB	1186182	2209321	100.00%	8.296%
67	16.237	1235	1238	1244	rBV	502528	1102347	49.90%	4.139%
68	17.654	1358	1362	1367	rBV	458115	1219331	55.19%	4.579%
69	18.420	1426	1429	1434	rVB	203286	522694	23.66%	1.963%

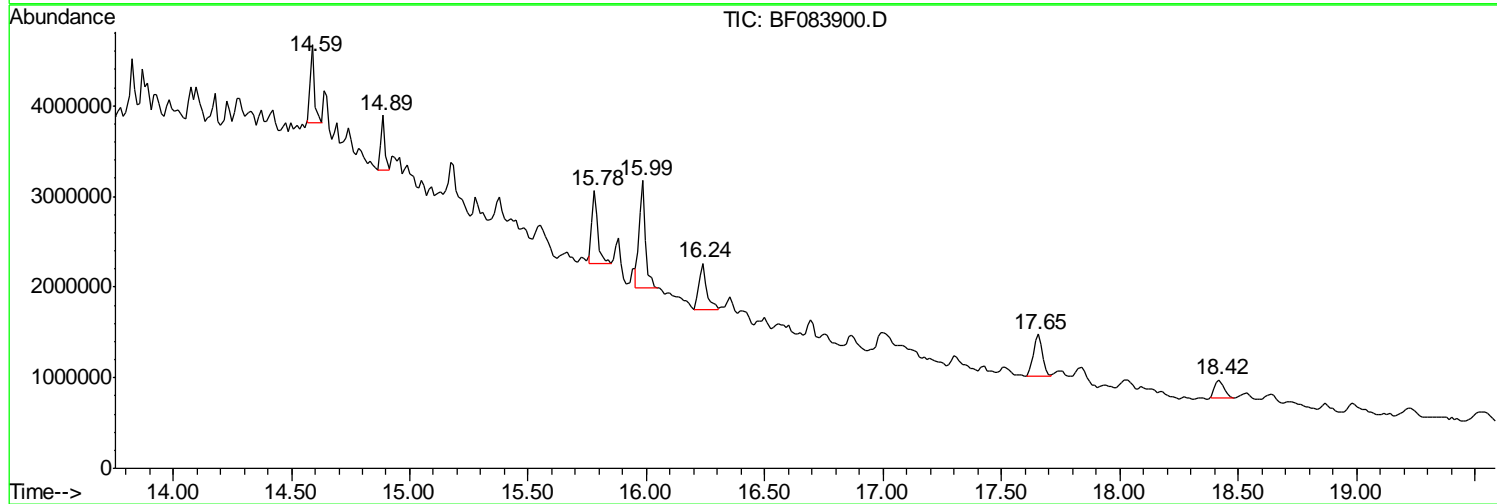
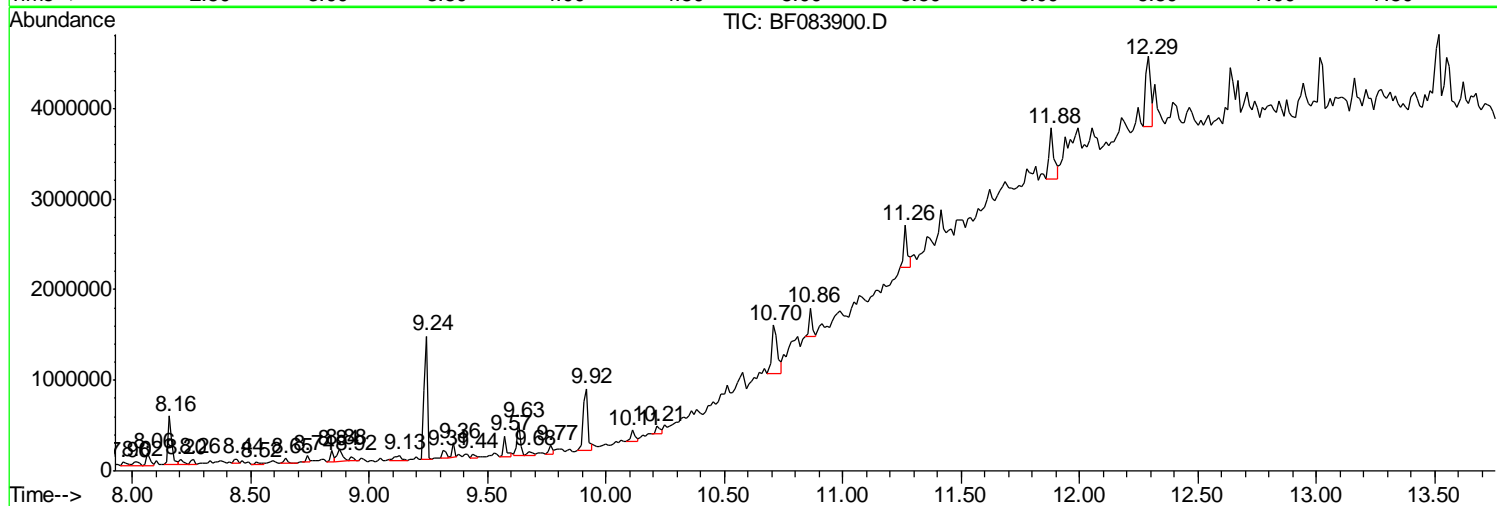
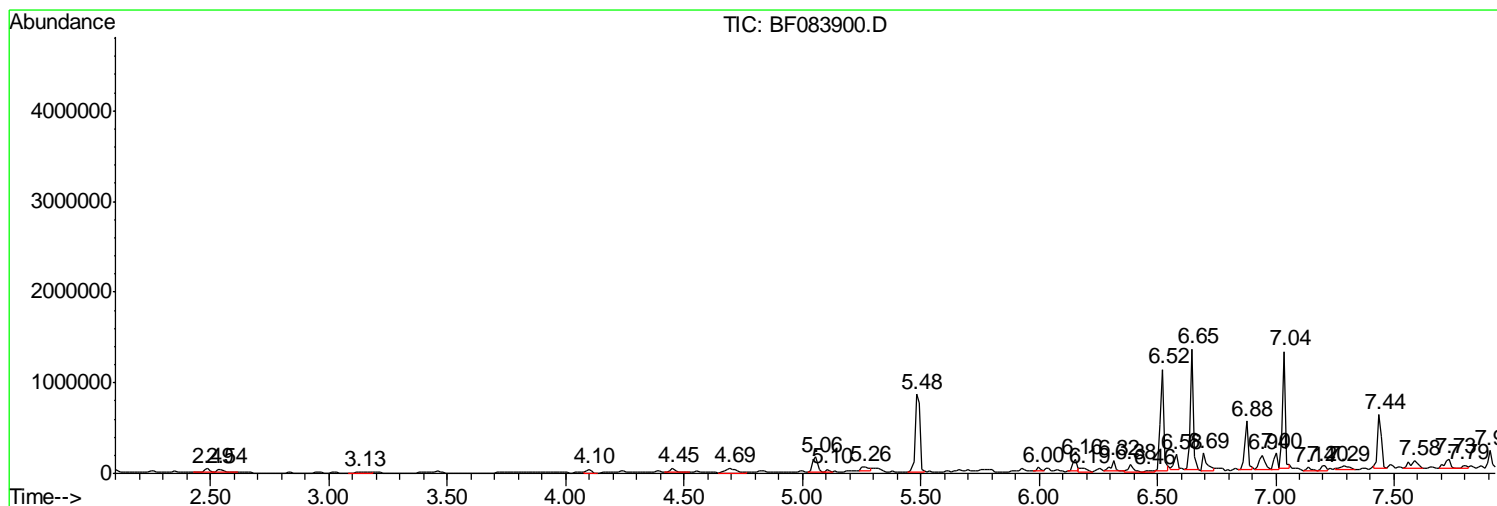
Sum of corrected areas: 26631536

Data Path : Z:\HPCHEM1\BNA_F\DATA\BF121815\
 Data File : BF083900.D
 Acq On : 18 Dec 2015 6:40
 Operator : UM/SJ
 Sample : G4759-01
 Misc :
 ALS Vial : 21 Sample Multiplier: 1

Instrument :
 BNA_F
 ClientSampleId :
 K210-0-2

Quant Method : Z:\HPCHEM1\BNA_F\METHODS\8270-BF121815.M
 Quant Title : ASP BNA STANDARDS FOR 5 POINT CALIBRATION

TIC Library : C:\DATABASE\NIST02.L
 TIC Integration Parameters: LSCINT.P



Data Path : Z:\HPCHEM1\BNA_F\DATA\BF121815\
 Data File : BF083900.D
 Acq On : 18 Dec 2015 6:40
 Operator : UM/SJ
 Sample : G4759-01
 Misc :
 ALS Vial : 21 Sample Multiplier: 1

Instrument :
 BNA_F
 ClientSampled :
 K210-0-2

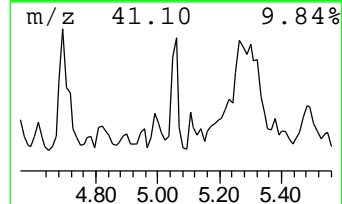
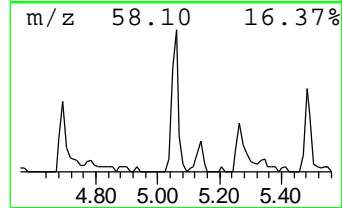
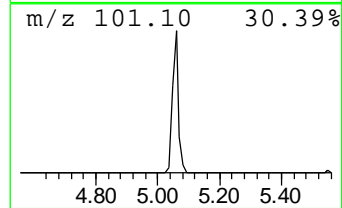
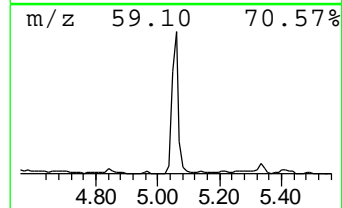
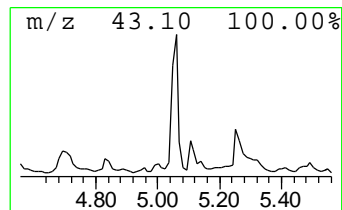
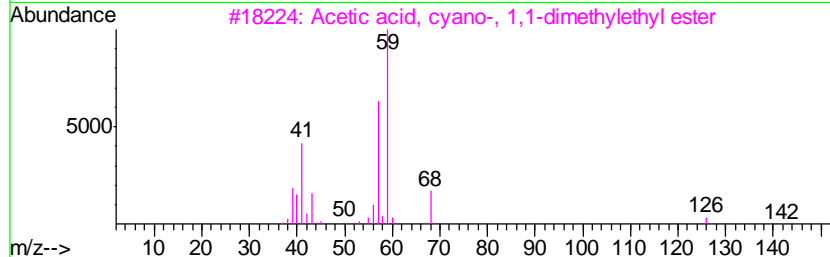
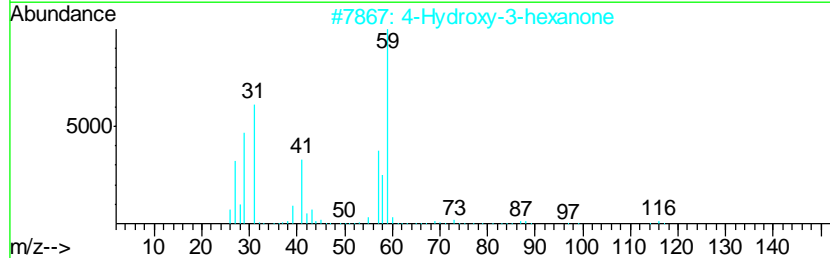
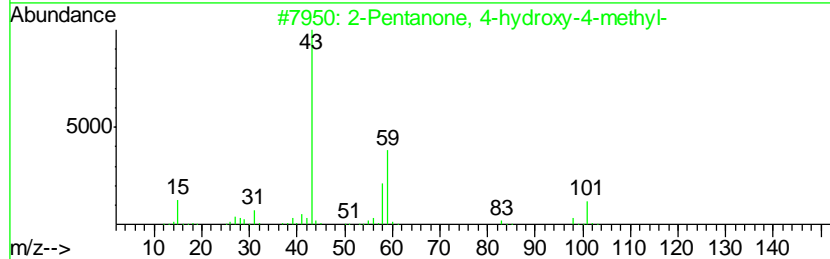
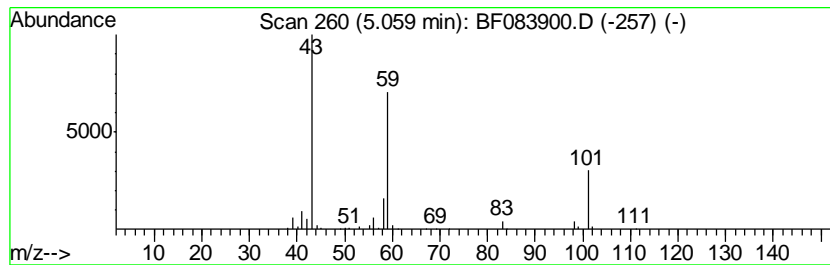
Quant Method : Z:\HPCHEM1\BNA_F\METHODS\8270-BF121815.M
 Quant Title : ASP BNA STANDARDS FOR 5 POINT CALIBRATION

TIC Library : C:\DATABASE\NIST02.L
 TIC Integration Parameters: LSCINT.P

 Peak Number 1 2-Pentanone, 4-hydroxy-4-me... Concentration Rank 14

R.T.	EstConc	Area	Relative to ISTD	R.T.
5.06	10.17 ng	243367	1,4-Dichlorobenzene-d4	6.88

Hit#	of	Tentative ID	MW	MolForm	CAS#	Qual
1	5	2-Pentanone, 4-hydroxy-4-methyl-	116	C6H12O2	000123-42-2	50
2		4-Hydroxy-3-hexanone	116	C6H12O2	004984-85-4	17
3		Acetic acid, cyano-, 1,1-dimethy...	141	C7H11NO2	001116-98-9	17
4		Acetone	58	C3H6O	000067-64-1	9
5		2-Propanone, 1-cyclopropyl-	98	C6H10O	004160-75-2	9



Data Path : Z:\HPCHEM1\BNA_F\DATA\BF121815\
 Data File : BF083900.D
 Acq On : 18 Dec 2015 6:40
 Operator : UM/SJ
 Sample : G4759-01
 Misc :
 ALS Vial : 21 Sample Multiplier: 1

Instrument :
 BNA_F
 ClientSampled :
 K210-0-2

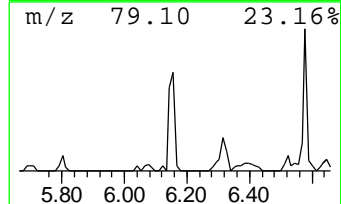
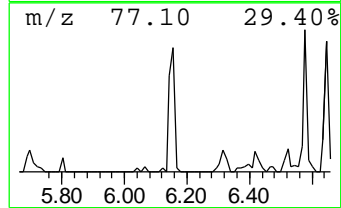
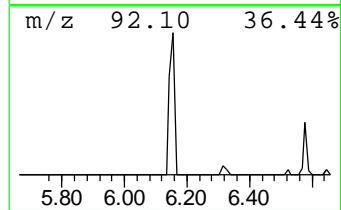
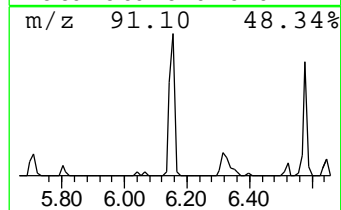
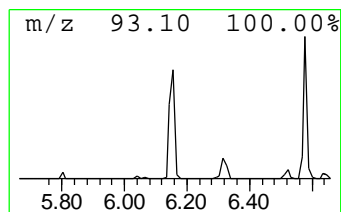
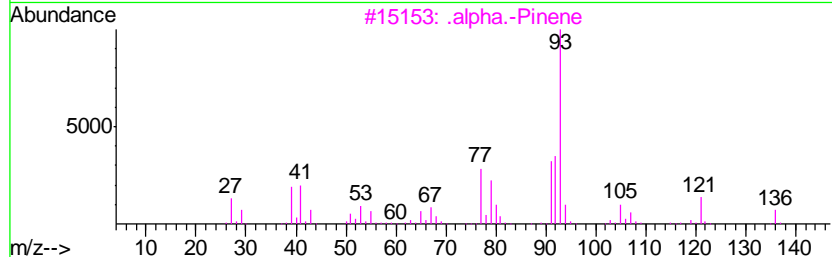
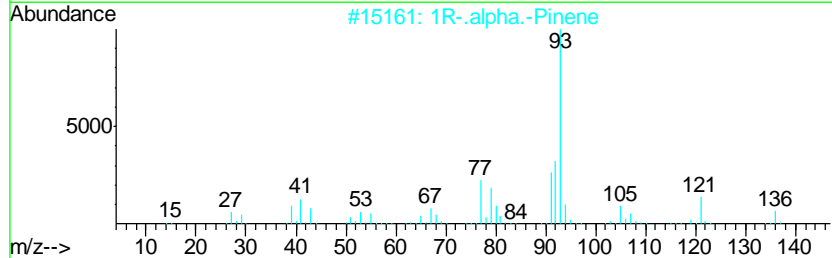
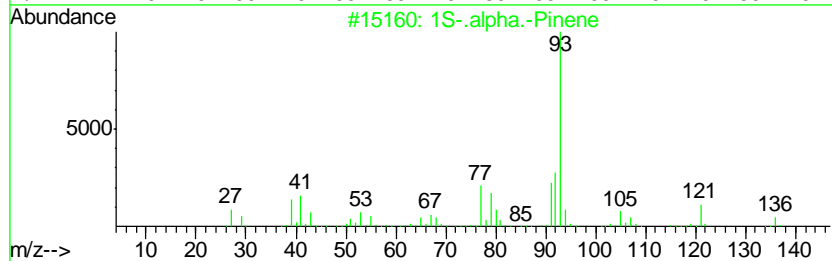
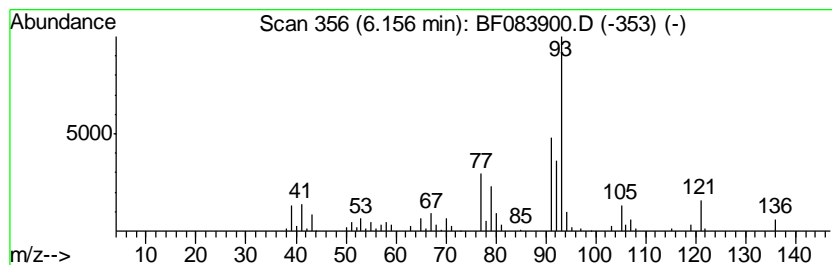
Quant Method : Z:\HPCHEM1\BNA_F\METHODS\8270-BF121815.M
 Quant Title : ASP BNA STANDARDS FOR 5 POINT CALIBRATION

TIC Library : C:\DATABASE\NIST02.L
 TIC Integration Parameters: LSCINT.P

 Peak Number 2 1S-.alpha.-Pinene Concentration Rank 19

R.T.	EstConc	Area	Relative to ISTD	R.T.
6.16	7.01 ng	167739	1,4-Dichlorobenzene-d4	6.88

Hit#	of	Tentative ID	MW	MolForm	CAS#	Qual
1	5	1S-.alpha.-Pinene	136	C10H16	007785-26-4	97
2		1R-.alpha.-Pinene	136	C10H16	007785-70-8	97
3		.alpha.-Pinene	136	C10H16	000080-56-8	95
4		Bicyclo[3.1.1]hept-2-ene, 3,6,6-...	136	C10H16	004889-83-2	94
5		Tricyclo[2.2.1.0(2,6)]heptane, 1...	136	C10H16	000508-32-7	91



Data Path : Z:\HPCHEM1\BNA_F\DATA\BF121815\
 Data File : BF083900.D
 Acq On : 18 Dec 2015 6:40
 Operator : UM/SJ
 Sample : G4759-01
 Misc :
 ALS Vial : 21 Sample Multiplier: 1

Instrument :
 BNA_F
 ClientSampled :
 K210-0-2

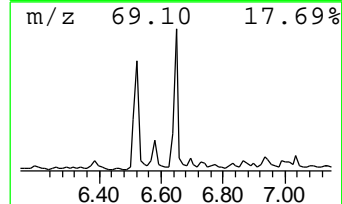
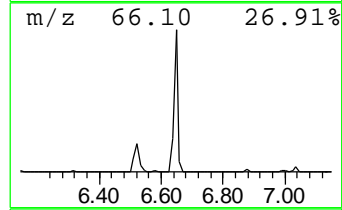
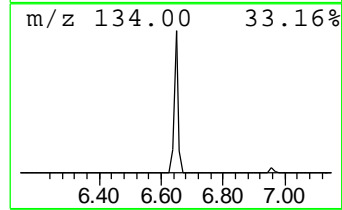
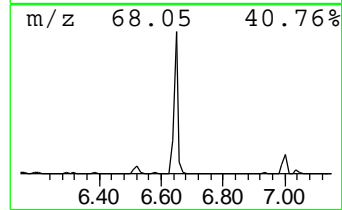
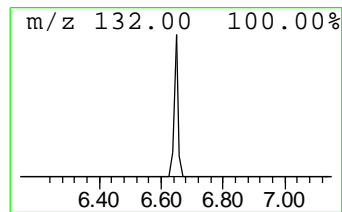
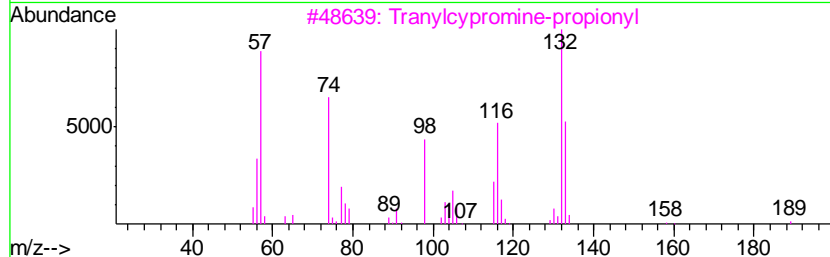
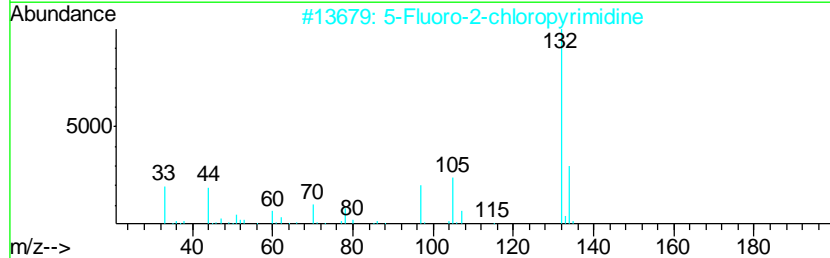
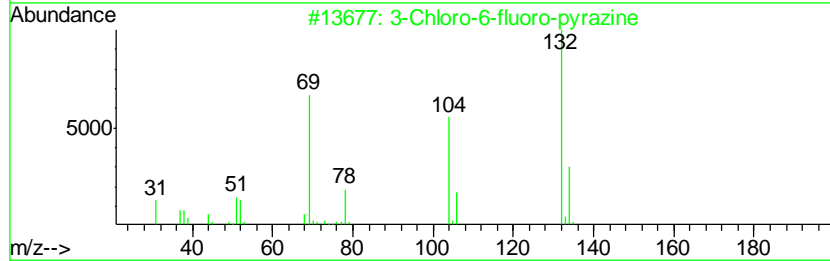
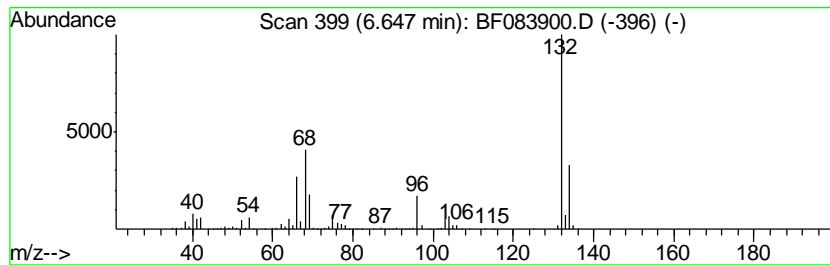
Quant Method : Z:\HPCHEM1\BNA_F\METHODS\8270-BF121815.M
 Quant Title : ASP BNA STANDARDS FOR 5 POINT CALIBRATION

TIC Library : C:\DATABASE\NIST02.L
 TIC Integration Parameters: LSCINT.P

 Peak Number 3 unknown6.65 Concentration Rank 1

R.T.	EstConc	Area	Relative to ISTD	R.T.
6.65	50.90 ng	1217500	1,4-Dichlorobenzene-d4	6.88

Hit#	of	Tentative ID	MW	MolForm	CAS#	Qual
1	5	3-Chloro-6-fluoro-pyrazine	132	C4H2ClFN2	1000146-10-7	27
2		5-Fluoro-2-chloropyrimidine	132	C4H2ClFN2	062802-42-0	16
3		Tranylcypromine-propionyl	189	C12H15NO	1000123-86-3	10
4		Bicyclo[4.2.0]octa-1,3,5-triene,...	132	C10H12	028749-81-7	9
5		(E)-3-Chloro-2-methyl-2-pentenal	132	C6H9ClO	031357-76-3	9



Data Path : Z:\HPCHEM1\BNA_F\DATA\BF121815\
 Data File : BF083900.D
 Acq On : 18 Dec 2015 6:40
 Operator : UM/SJ
 Sample : G4759-01
 Misc :
 ALS Vial : 21 Sample Multiplier: 1

Instrument :
 BNA_F
 ClientSampleID :
 K210-0-2

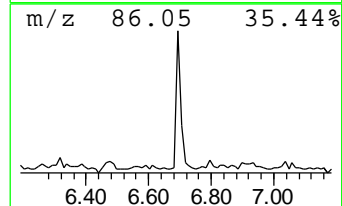
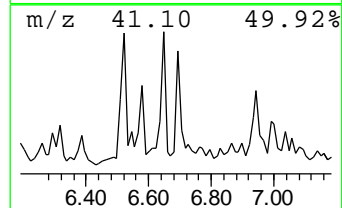
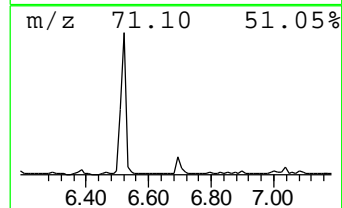
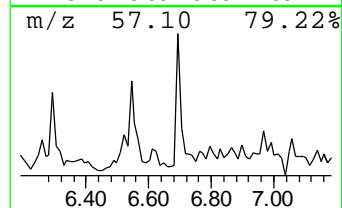
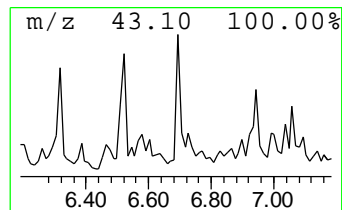
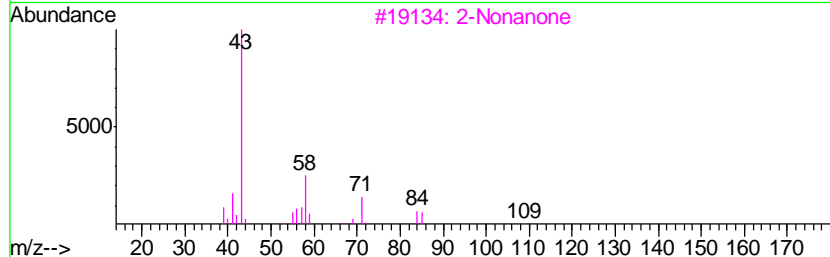
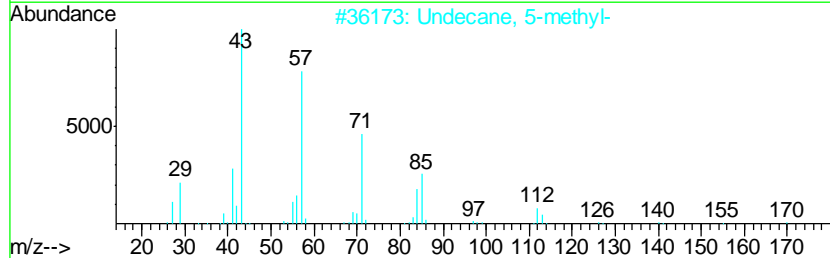
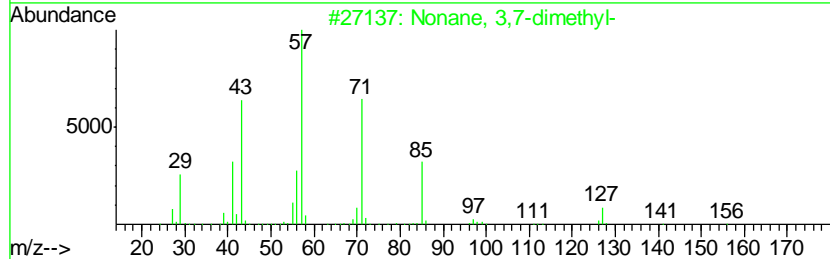
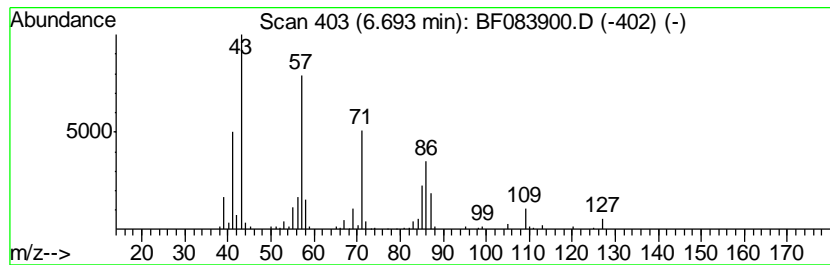
Quant Method : Z:\HPCHEM1\BNA_F\METHODS\8270-BF121815.M
 Quant Title : ASP BNA STANDARDS FOR 5 POINT CALIBRATION

TIC Library : C:\DATABASE\NIST02.L
 TIC Integration Parameters: LSCINT.P

 Peak Number 4 unknown6.69 Concentration Rank 13

R.T.	EstConc	Area	Relative to ISTD	R.T.
6.69	10.31 ng	246624	1,4-Dichlorobenzene-d4	6.88

Hit#	of	Tentative ID	MW	MolForm	CAS#	Qual
1	5	Nonane, 3,7-dimethyl-	156	C11H24	017302-32-8	47
2		Undecane, 5-methyl-	170	C12H26	001632-70-8	43
3		2-Nonanone	142	C9H18O	000821-55-6	43
4		Hexadecane	226	C16H34	000544-76-3	43
5		Dodecane, 2,6,10-trimethyl-	212	C15H32	003891-98-3	42



Data Path : Z:\HPCHEM1\BNA_F\DATA\BF121815\
 Data File : BF083900.D
 Acq On : 18 Dec 2015 6:40
 Operator : UM/SJ
 Sample : G4759-01
 Misc :
 ALS Vial : 21 Sample Multiplier: 1

Instrument :
 BNA_F
 ClientSampleID :
 K210-0-2

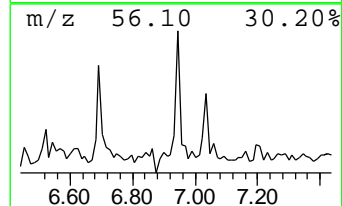
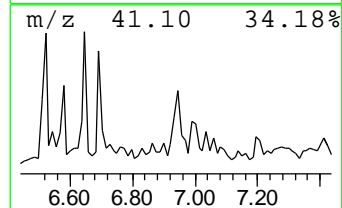
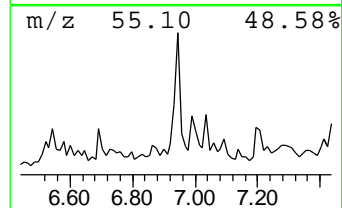
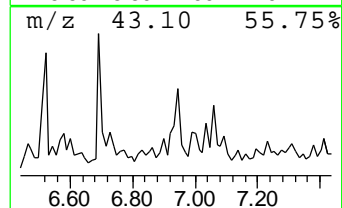
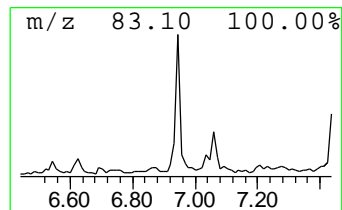
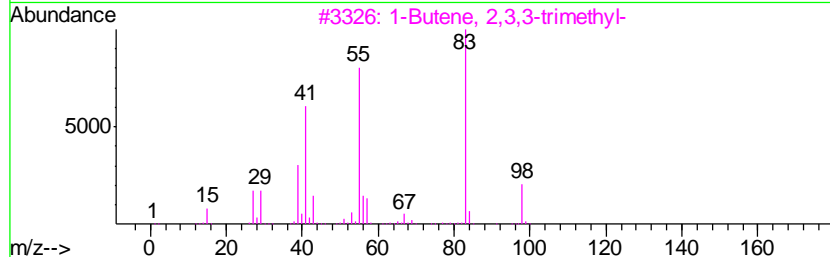
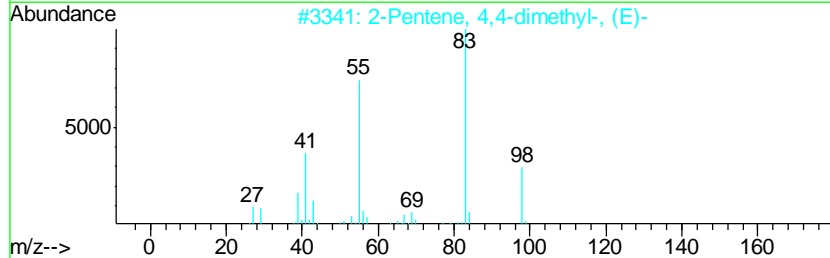
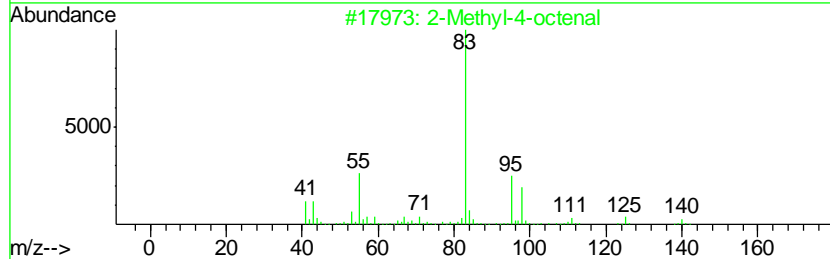
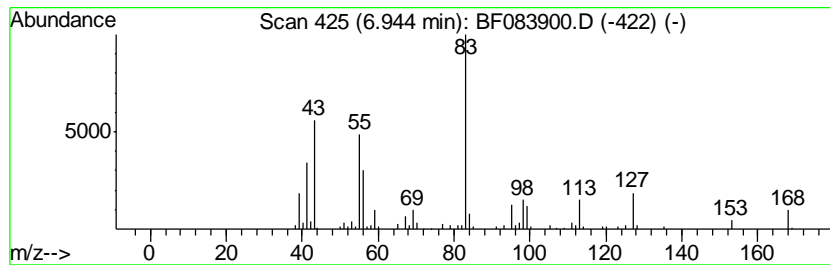
Quant Method : Z:\HPCHEM1\BNA_F\METHODS\8270-BF121815.M
 Quant Title : ASP BNA STANDARDS FOR 5 POINT CALIBRATION

TIC Library : C:\DATABASE\NIST02.L
 TIC Integration Parameters: LSCINT.P

 Peak Number 5 unknown6.94 Concentration Rank 11

R.T.	EstConc	Area	Relative to ISTD	R.T.
6.94	12.28 ng	293830	1,4-Dichlorobenzene-d4	6.88

Hit#	of	Tentative ID	MW	MolForm	CAS#	Qual
1	5	2-Methyl-4-octenal	140	C9H16O	030390-58-0	47
2		2-Pentene, 4,4-dimethyl-, (E)-	98	C7H14	000690-08-4	43
3		1-Butene, 2,3,3-trimethyl-	98	C7H14	000594-56-9	43
4		1-Methyl-1H-1,2,4-triazole	83	C3H5N3	006086-21-1	43
5		Furan, 2-methoxy-	98	C5H6O2	025414-22-6	38



Data Path : Z:\HPCHEM1\BNA_F\DATA\BF121815\
 Data File : BF083900.D
 Acq On : 18 Dec 2015 6:40
 Operator : UM/SJ
 Sample : G4759-01
 Misc :
 ALS Vial : 21 Sample Multiplier: 1

Instrument :
 BNA_F
 ClientSampled :
 K210-0-2

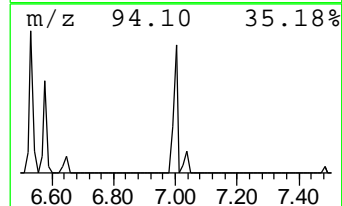
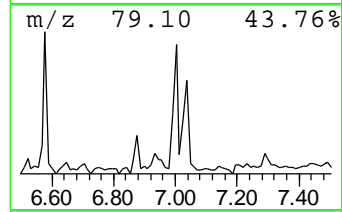
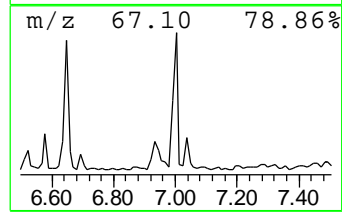
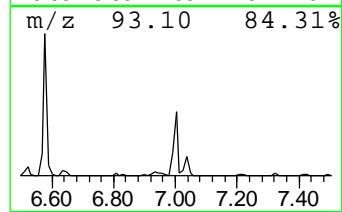
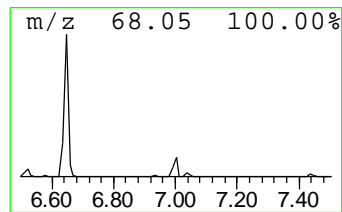
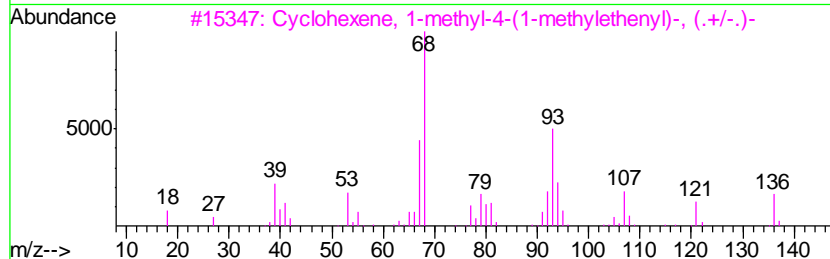
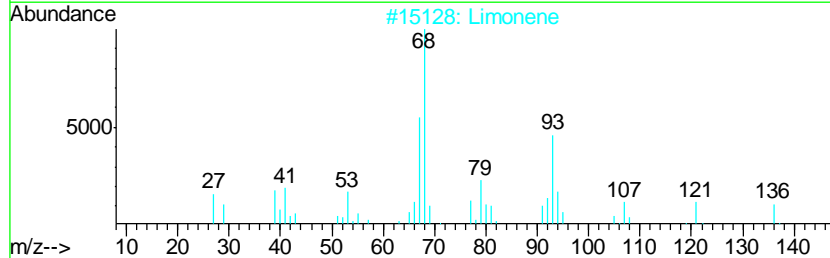
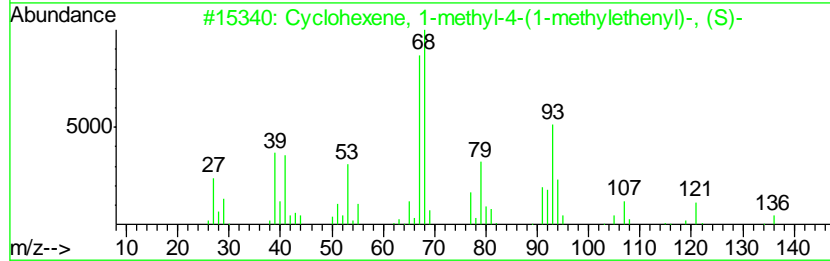
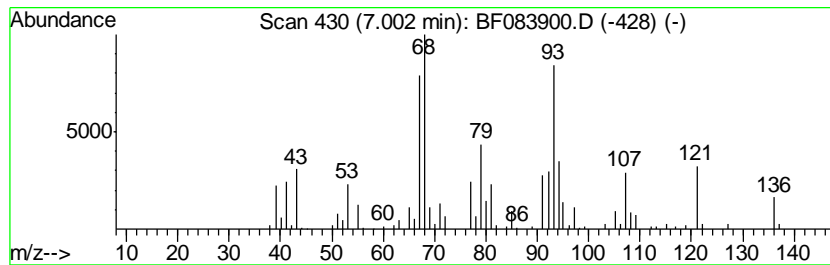
Quant Method : Z:\HPCHEM1\BNA_F\METHODS\8270-BF121815.M
 Quant Title : ASP BNA STANDARDS FOR 5 POINT CALIBRATION

TIC Library : C:\DATABASE\NIST02.L
 TIC Integration Parameters: LSCINT.P

 Peak Number 6 Cyclohexene, 1-methyl-4-(1-... Concentration Rank 16

R.T.	EstConc	Area	Relative to ISTD	R.T.
7.00	8.45 ng	202216	1,4-Dichlorobenzene-d4	6.88

Hit#	of	Tentative ID	MW	MolForm	CAS#	Qual
1	5	Cyclohexene, 1-methyl-4-(1-methy...	136	C10H16	005989-54-8	96
2		Limonene	136	C10H16	000138-86-3	87
3		Cyclohexene, 1-methyl-4-(1-methy...	136	C10H16	007705-14-8	81
4		D-Limonene	136	C10H16	005989-27-5	81
5		1,5-Cyclooctadiene, 1,5-dimethyl-	136	C10H16	003760-14-3	74



Data Path : Z:\HPCHEM1\BNA_F\DATA\BF121815\
 Data File : BF083900.D
 Acq On : 18 Dec 2015 6:40
 Operator : UM/SJ
 Sample : G4759-01
 Misc :
 ALS Vial : 21 Sample Multiplier: 1

Instrument :
 BNA_F
 ClientSampled :
 K210-0-2

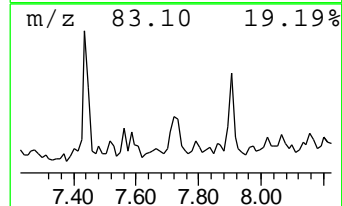
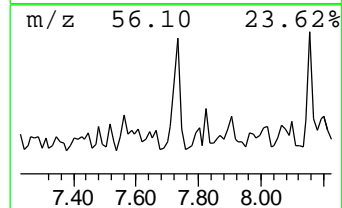
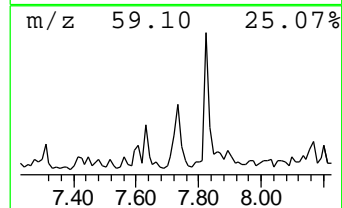
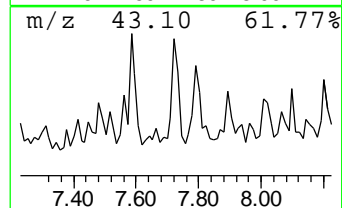
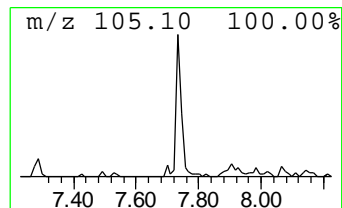
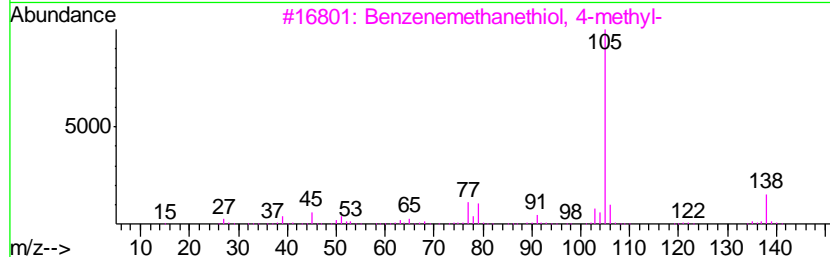
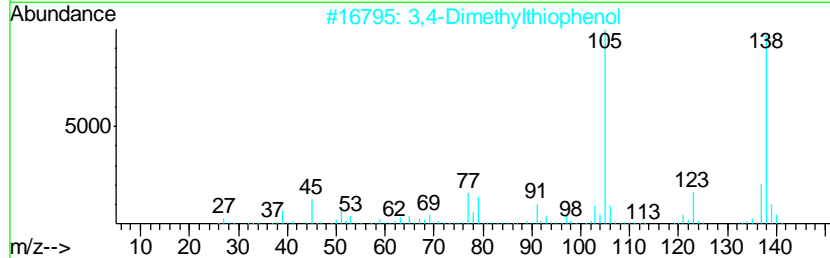
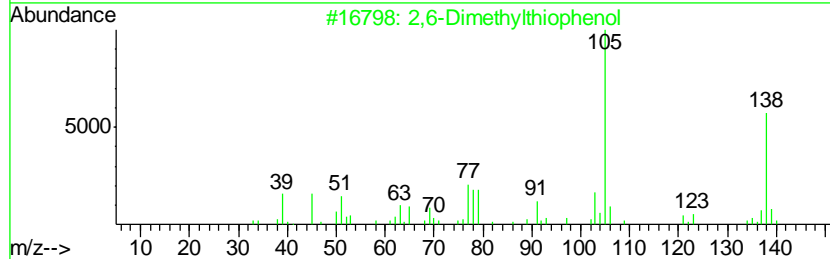
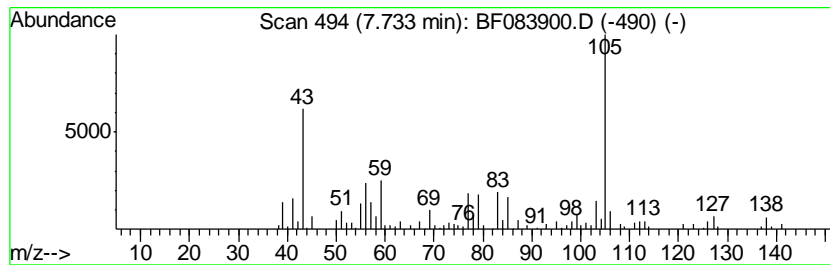
Quant Method : Z:\HPCHEM1\BNA_F\METHODS\8270-BF121815.M
 Quant Title : ASP BNA STANDARDS FOR 5 POINT CALIBRATION

TIC Library : C:\DATABASE\NIST02.L
 TIC Integration Parameters: LSCINT.P

 Peak Number 8 unknown7.73 Concentration Rank 20

R.T.	EstConc	Area	Relative to ISTD	R.T.
7.73	6.91 ng	207690	Naphthalene-d8	8.16

Hit#	of	Tentative ID	MW	MolForm	CAS#	Qual
1	5	2,6-Dimethylthiophenol	138	C8H10S	000118-72-9	22
2		3,4-Dimethylthiophenol	138	C8H10S	018800-53-8	22
3		Benzenemethanethiol, 4-methyl-	138	C8H10S	004498-99-1	22
4		Benzene, (1-nitroethyl)-	151	C8H9NO2	007214-61-1	18
5		Benzene, 1-(bromomethyl)-4-methyl-	184	C8H9Br	000104-81-4	14



Data Path : Z:\HPCHEM1\BNA_F\DATA\BF121815\
 Data File : BF083900.D
 Acq On : 18 Dec 2015 6:40
 Operator : UM/SJ
 Sample : G4759-01
 Misc :
 ALS Vial : 21 Sample Multiplier: 1

Instrument :
 BNA_F
 ClientSampleID :
 K210-0-2

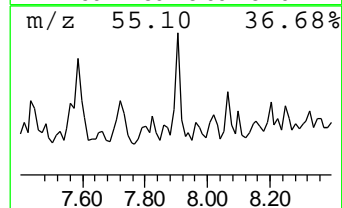
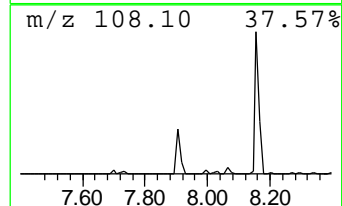
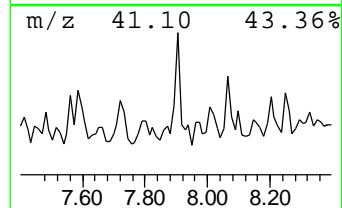
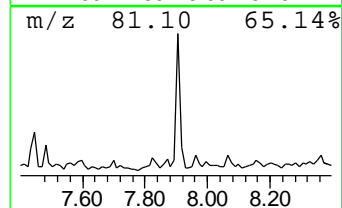
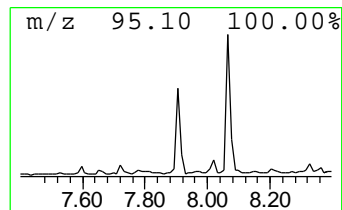
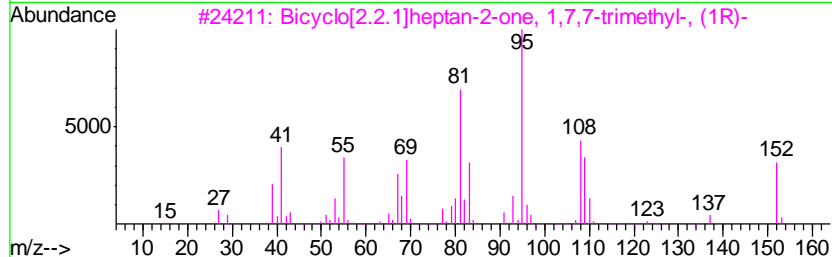
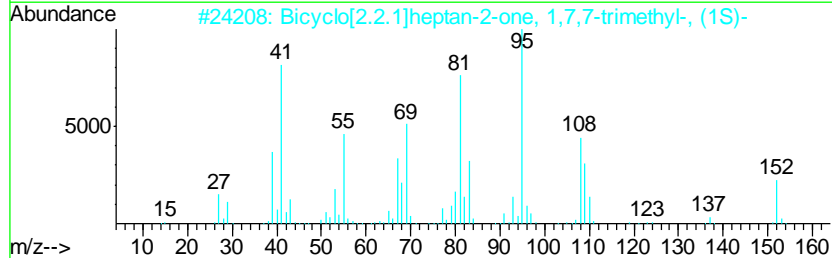
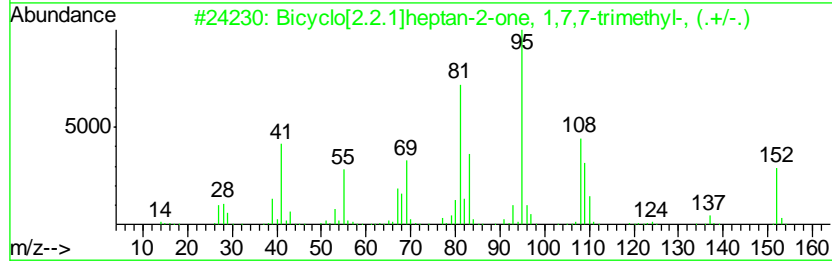
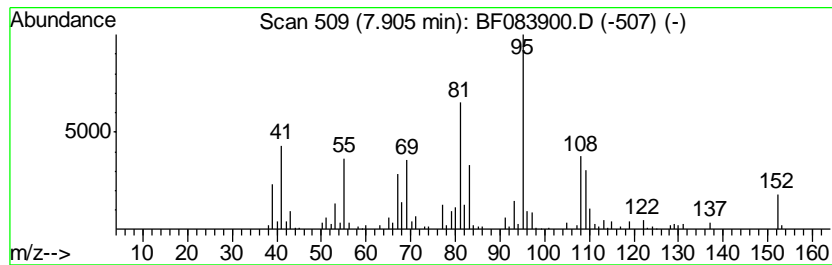
Quant Method : Z:\HPCHEM1\BNA_F\METHODS\8270-BF121815.M
 Quant Title : ASP BNA STANDARDS FOR 5 POINT CALIBRATION

TIC Library : C:\DATABASE\NIST02.L
 TIC Integration Parameters: LSCINT.P

 Peak Number 9 Bicyclo[2.2.1]heptan-2-one,... Concentration Rank 18

R.T.	EstConc	Area	Relative to ISTD	R.T.
7.90	7.42 ng	222831	Napthalene-d8	8.16

Hit#	of	Tentative ID	MW	MolForm	CAS#	Qual
1	5	Bicyclo[2.2.1]heptan-2-one, 1,7,...	152	C10H16O	021368-68-3	97
2		Bicyclo[2.2.1]heptan-2-one, 1,7,...	152	C10H16O	000464-48-2	97
3		Bicyclo[2.2.1]heptan-2-one, 1,7,...	152	C10H16O	000464-49-3	97
4		Camphor	152	C10H16O	000076-22-2	96
5		Bicyclo[3.1.0]hexane, 1,5-dimethyl-	110	C8H14	1000142-17-5	49



Data Path : Z:\HPCHEM1\BNA_F\DATA\BF121815\
 Data File : BF083900.D
 Acq On : 18 Dec 2015 6:40
 Operator : UM/SJ
 Sample : G4759-01
 Misc :
 ALS Vial : 21 Sample Multiplier: 1

Instrument :
 BNA_F
 ClientSampleID :
 K210-0-2

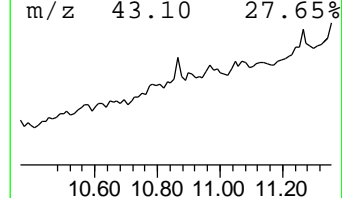
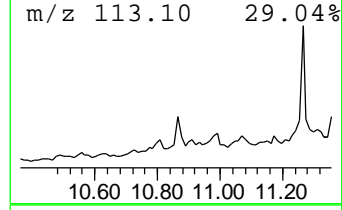
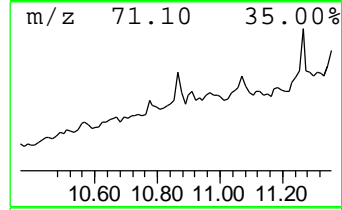
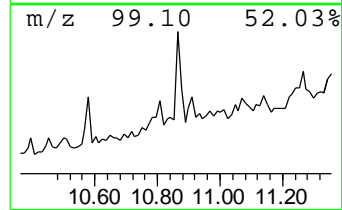
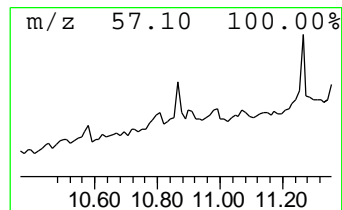
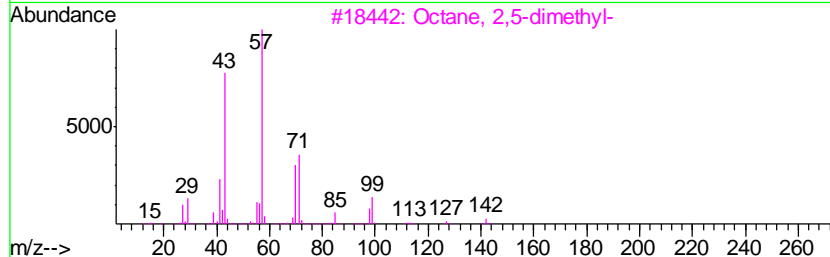
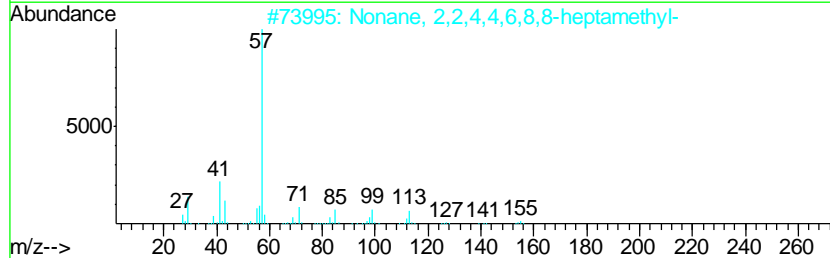
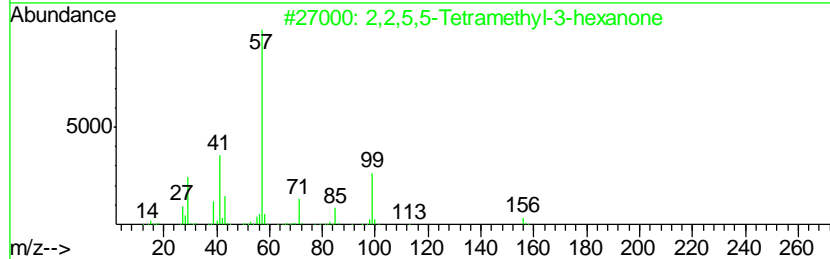
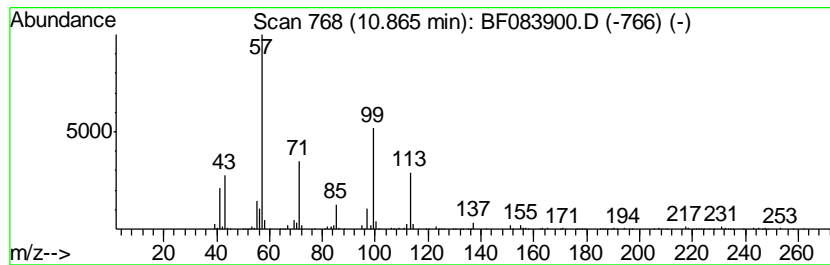
Quant Method : Z:\HPCHEM1\BNA_F\METHODS\8270-BF121815.M
 Quant Title : ASP BNA STANDARDS FOR 5 POINT CALIBRATION

TIC Library : C:\DATABASE\NIST02.L
 TIC Integration Parameters: LSCINT.P

 Peak Number 10 2,2,5,5-Tetramethyl-3-hexanone Concentration Rank 12

R.T.	EstConc	Area	Relative to ISTD	R.T.
10.86	10.42 ng	269789	Phenanthrene-d10	11.41

Hit#	of	Tentative ID	MW	MolForm	CAS#	Qual
1	5	2,2,5,5-Tetramethyl-3-hexanone	156	C10H20O	000868-91-7	50
2		Nonane, 2,2,4,4,6,8,8-heptamethyl-	226	C16H34	004390-04-9	47
3		Octane, 2,5-dimethyl-	142	C10H22	015869-89-3	43
4		Dodecane, 2,6,10-trimethyl-	212	C15H32	003891-98-3	38
5		Undecane, 2,6-dimethyl-	184	C13H28	017301-23-4	38



Data Path : Z:\HPCHEM1\BNA_F\DATA\BF121815\
 Data File : BF083900.D
 Acq On : 18 Dec 2015 6:40
 Operator : UM/SJ
 Sample : G4759-01
 Misc :
 ALS Vial : 21 Sample Multiplier: 1

Instrument :
 BNA_F
 ClientSampleID :
 K210-0-2

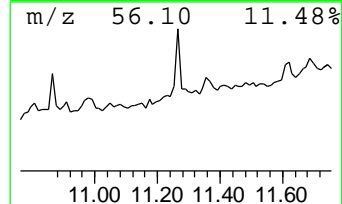
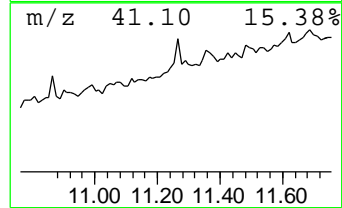
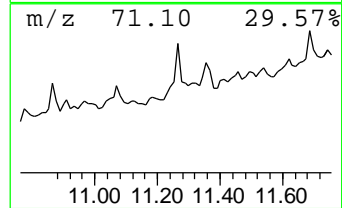
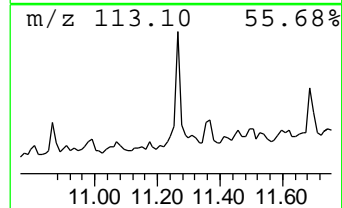
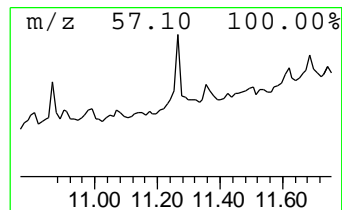
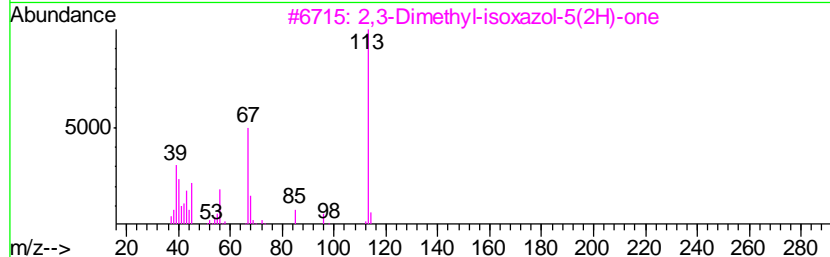
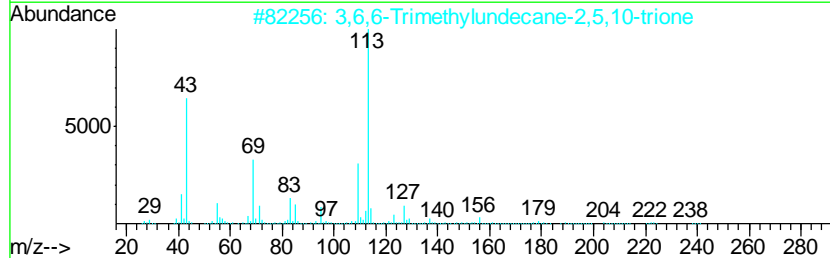
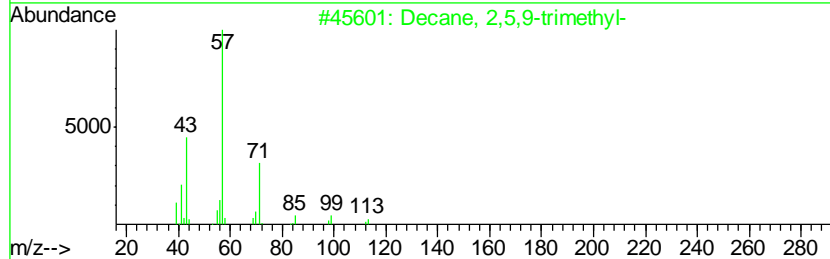
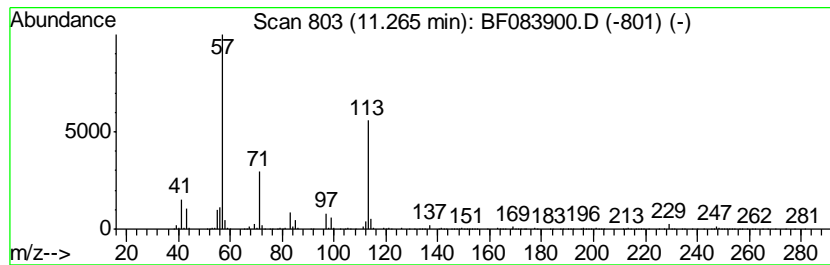
Quant Method : Z:\HPCHEM1\BNA_F\METHODS\8270-BF121815.M
 Quant Title : ASP BNA STANDARDS FOR 5 POINT CALIBRATION

TIC Library : C:\DATABASE\NIST02.L
 TIC Integration Parameters: LSCINT.P

 Peak Number 11 unknown11.26 Concentration Rank 6

R.T.	EstConc	Area	Relative to ISTD	R.T.
11.26	20.00 ng	517974	Phenanthrene-d10	11.41

Hit#	of	Tentative ID	MW	MolForm	CAS#	Qual
1	5	Decane, 2,5,9-trimethyl-	184	C13H28	062108-22-9	43
2		3,6,6-Trimethylundecane-2,5,10-t...	240	C14H24O3	1000190-97-6	38
3		2,3-Dimethyl-isoxazol-5(2H)-one	113	C5H7NO2	007713-67-9	38
4		Undecane, 2,6-dimethyl-	184	C13H28	017301-23-4	38
5		Undecane, 2,5-dimethyl-	184	C13H28	017301-22-3	37



Data Path : Z:\HPCHEM1\BNA_F\DATA\BF121815\
 Data File : BF083900.D
 Acq On : 18 Dec 2015 6:40
 Operator : UM/SJ
 Sample : G4759-01
 Misc :
 ALS Vial : 21 Sample Multiplier: 1

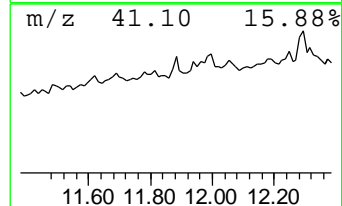
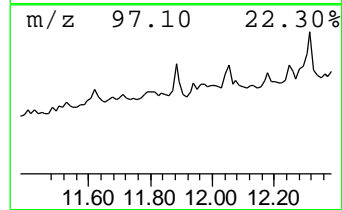
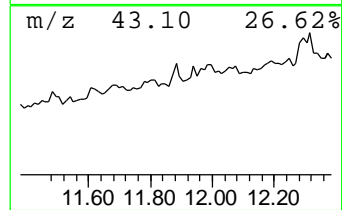
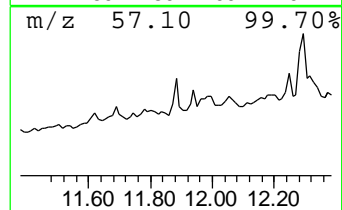
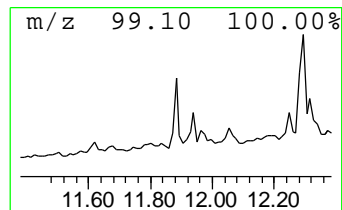
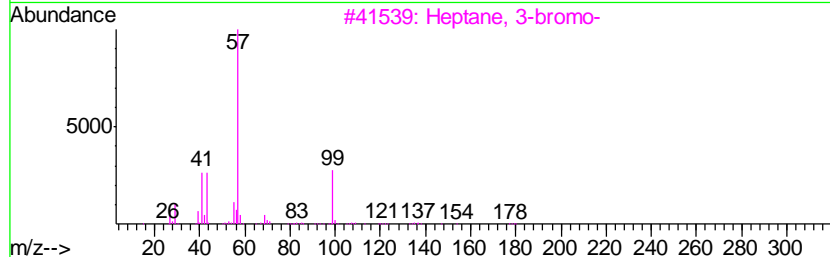
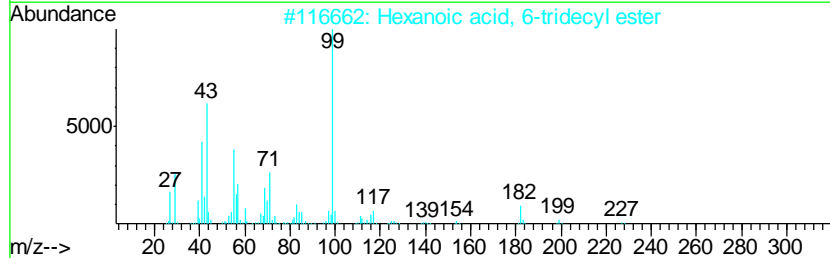
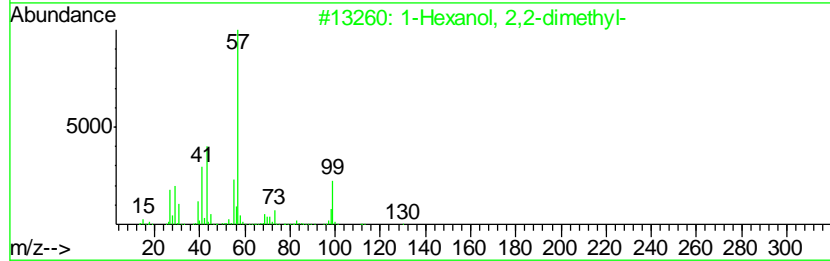
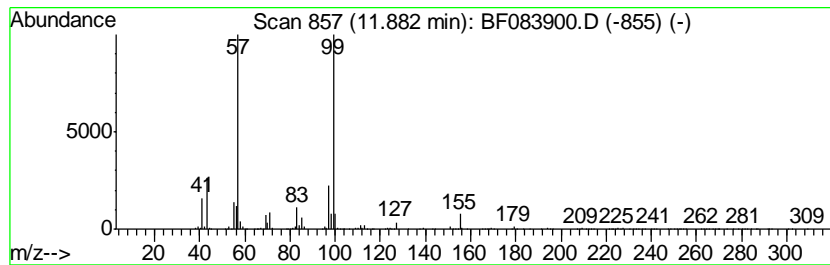
Instrument :
 BNA_F
 ClientSampleID :
 K210-0-2

Quant Method : Z:\HPCHEM1\BNA_F\METHODS\8270-BF121815.M
 Quant Title : ASP BNA STANDARDS FOR 5 POINT CALIBRATION

TIC Library : C:\DATABASE\NIST02.L
 TIC Integration Parameters: LSCINT.P

 Peak Number 12 1-Hexanol, 2,2-dimethyl- Concentration Rank 5

R.T.	EstConc	Area	Relative to ISTD	R.T.
11.88	31.21 ng	808300	Phenanthrene-d10	11.41
Hit# of	5	Tentative ID	MW MolForm	CAS# Qual
1		1-Hexanol, 2,2-dimethyl-	130 C8H18O	002370-13-0 53
2		Hexanoic acid, 6-tridecyl ester	298 C19H38O2	1000279-29-5 53
3		Heptane, 3-bromo-	178 C7H15Br	001974-05-6 53
4		5-Amino-3-methyl-1,2,4-oxadiazole	99 C3H5N3O	003663-39-6 49
5		N-Phenyl-N'-(2-piperazin-1-yl-ethyl)-	276 C14H20N4O2	332404-00-9 47



Data Path : Z:\HPCHEM1\BNA_F\DATA\BF121815\
 Data File : BF083900.D
 Acq On : 18 Dec 2015 6:40
 Operator : UM/SJ
 Sample : G4759-01
 Misc :
 ALS Vial : 21 Sample Multiplier: 1

Instrument :
 BNA_F
 ClientSampleId :
 K210-0-2

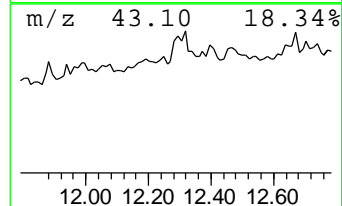
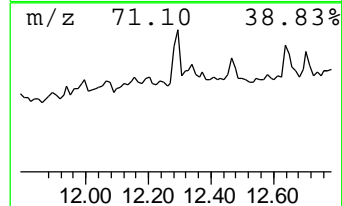
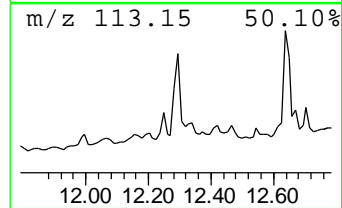
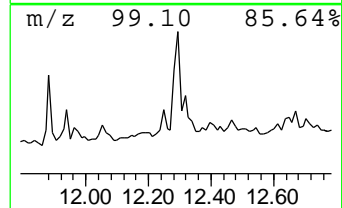
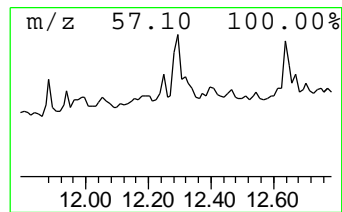
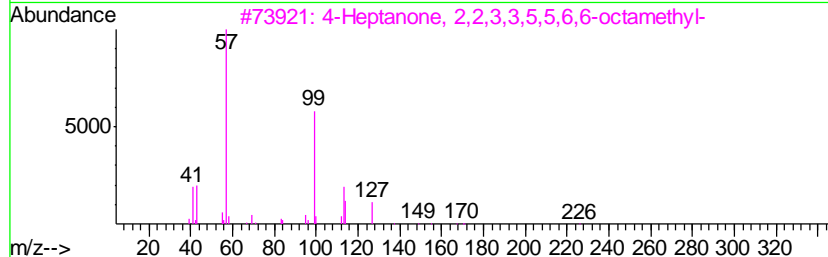
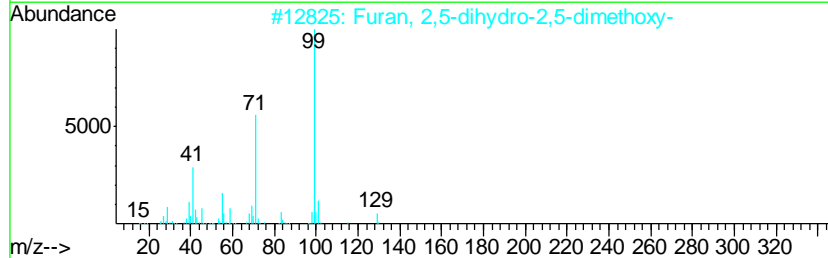
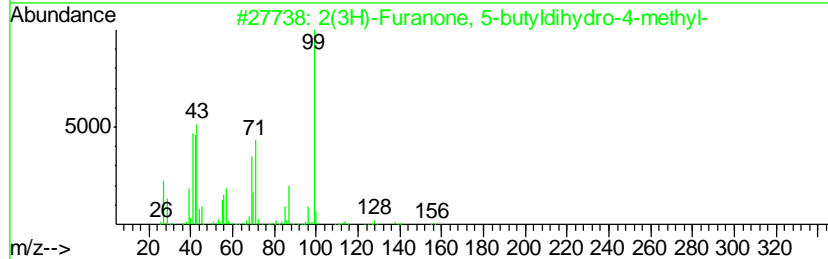
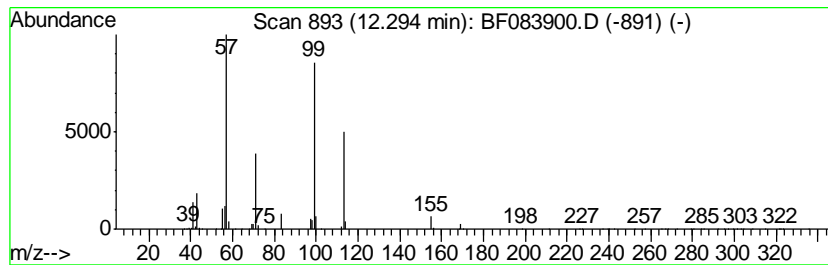
Quant Method : Z:\HPCHEM1\BNA_F\METHODS\8270-BF121815.M
 Quant Title : ASP BNA STANDARDS FOR 5 POINT CALIBRATION

TIC Library : C:\DATABASE\NIST02.L
 TIC Integration Parameters: LSCINT.P

 Peak Number 13 2(3H)-Furanone, 5-butyldihydro... Concentration Rank 3

R.T.	EstConc	Area	Relative to ISTD	R.T.
12.29	42.42 ng	1098610	Phenanthrene-d10	11.41

Hit#	of	Tentative ID	MW	MolForm	CAS#	Qual
1	5	2(3H)-Furanone, 5-butyldihydro-4...	156	C9H16O2	039212-23-2	50
2		Furan, 2,5-dihydro-2,5-dimethoxy-	130	C6H10O3	000332-77-4	47
3		4-Heptanone, 2,2,3,3,5,5,6,6-oct...	226	C15H30O	016424-66-1	43
4		2(3H)-Furanone, 5-butyldihydro-4...	156	C9H16O2	055013-32-6	42
5		Hexanoic acid, anhydride	214	C12H22O3	002051-49-2	38



Data Path : Z:\HPCHEM1\BNA_F\DATA\BF121815\
 Data File : BF083900.D
 Acq On : 18 Dec 2015 6:40
 Operator : UM/SJ
 Sample : G4759-01
 Misc :
 ALS Vial : 21 Sample Multiplier: 1

Instrument :
 BNA_F
 ClientSampleID :
 K210-0-2

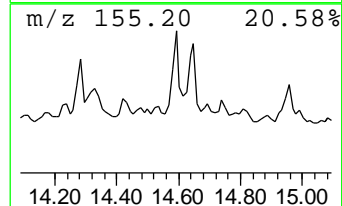
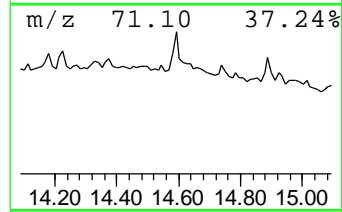
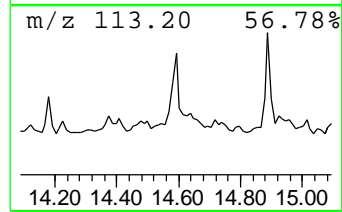
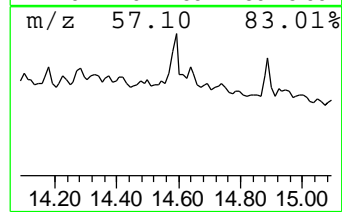
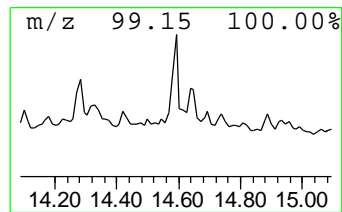
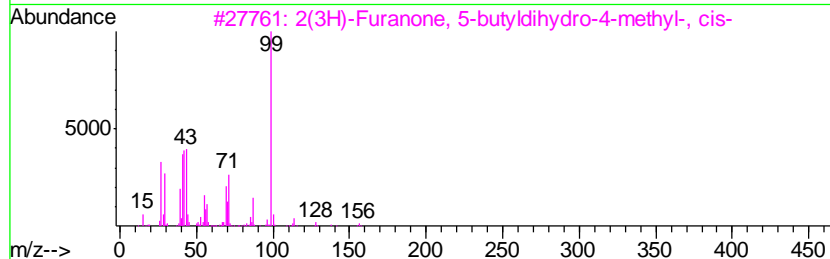
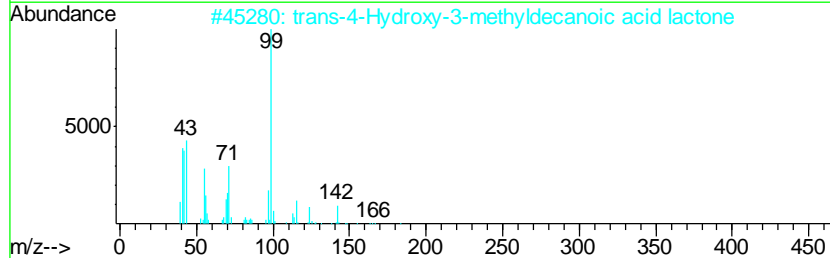
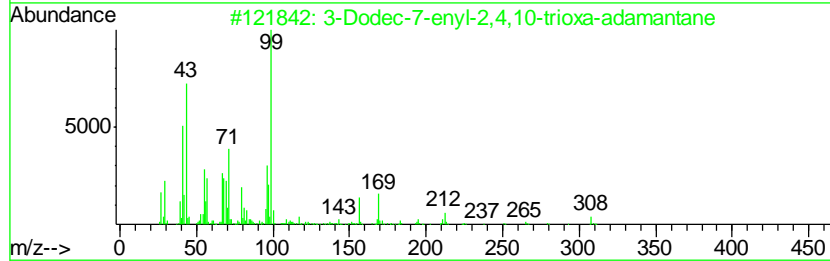
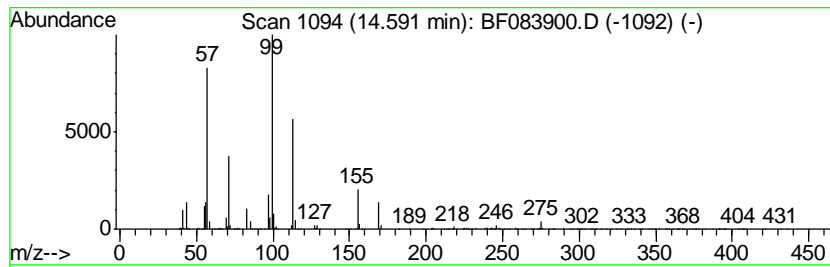
Quant Method : Z:\HPCHEM1\BNA_F\METHODS\8270-BF121815.M
 Quant Title : ASP BNA STANDARDS FOR 5 POINT CALIBRATION

TIC Library : C:\DATABASE\NIST02.L
 TIC Integration Parameters: LSCINT.P

 Peak Number 14 unknown14.59 Concentration Rank 7

R.T.	EstConc	Area	Relative to ISTD	R.T.
14.59	20.00 ng	1053060	Chrysene-d12	14.08

Hit#	of	Tentative ID	MW	MolForm	CAS#	Qual
1	5	3-Dodec-7-enyl-2,4,10-trioxa-ada...	308	C19H32O3	1000193-13-9	43
2		trans-4-Hydroxy-3-methyldecanoic...	184	C11H20O2	147254-33-9	43
3		2(3H)-Furanone, 5-butyldihydro-4...	156	C9H16O2	055013-32-6	43
4		cis-3-Methyl-4-octanolide	156	C9H16O2	039638-67-0	38
5		2(3H)-Furanone, 5-hexyldihydro-4...	184	C11H20O2	125133-98-4	37



Data Path : Z:\HPCHEM1\BNA_F\DATA\BF121815\
 Data File : BF083900.D
 Acq On : 18 Dec 2015 6:40
 Operator : UM/SJ
 Sample : G4759-01
 Misc :
 ALS Vial : 21 Sample Multiplier: 1

Instrument :
 BNA_F
 ClientSampleID :
 K210-0-2

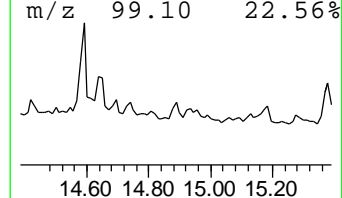
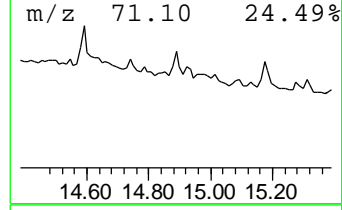
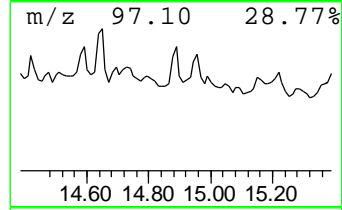
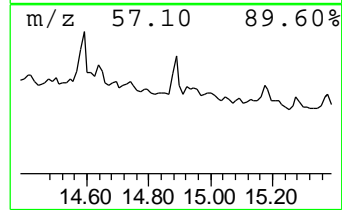
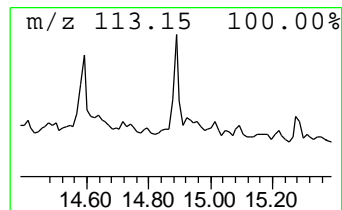
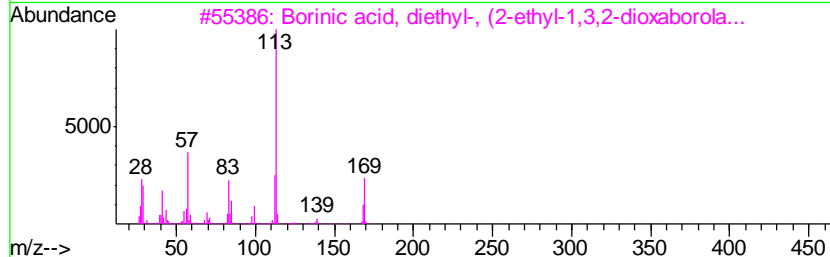
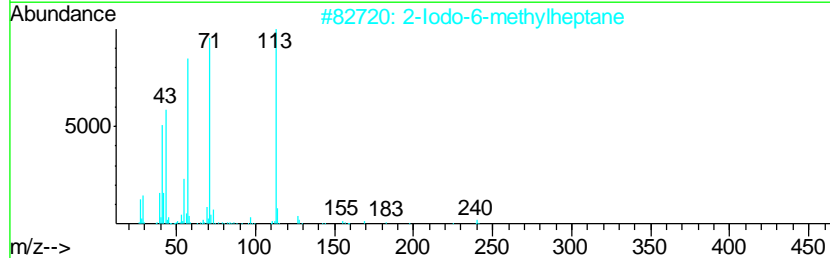
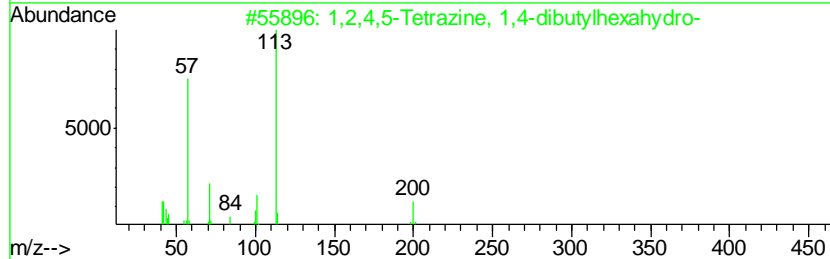
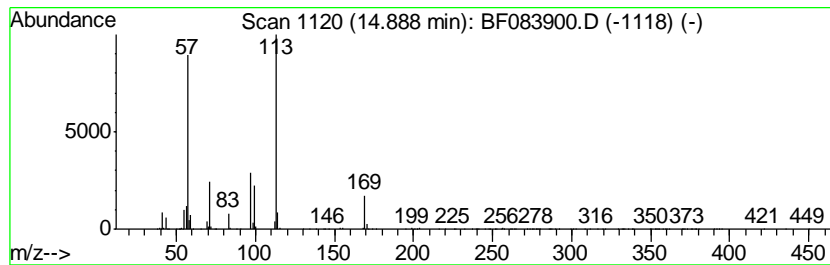
Quant Method : Z:\HPCHEM1\BNA_F\METHODS\8270-BF121815.M
 Quant Title : ASP BNA STANDARDS FOR 5 POINT CALIBRATION

TIC Library : C:\DATABASE\NIST02.L
 TIC Integration Parameters: LSCINT.P

 Peak Number 15 1,2,4,5-Tetrazine, 1,4-dibu... Concentration Rank 15

R.T.	EstConc	Area	Relative to ISTD	R.T.
14.89	10.00 ng	694971	Perylene-d12	15.54

Hit#	of	Tentative ID	MW	MolForm	CAS#	Qual
1	5	1,2,4,5-Tetrazine, 1,4-dibutylhe...	200	C10H24N4	035035-70-2	50
2		2-Iodo-6-methylheptane	240	C8H17I	088373-60-8	28
3		Borinic acid, diethyl-, (2-ethyl...	198	C9H20B2O3	058163-56-7	25
4		Propanenitrile, 3-(dichloromethy...	167	C4H7Cl2NSi	001071-21-2	25
5		2-Pentenoic acid, 4-oxo-, methyl...	128	C6H8O3	002833-24-1	25



Data Path : Z:\HPCHEM1\BNA_F\DATA\BF121815\
 Data File : BF083900.D
 Acq On : 18 Dec 2015 6:40
 Operator : UM/SJ
 Sample : G4759-01
 Misc :
 ALS Vial : 21 Sample Multiplier: 1

Instrument :
 BNA_F
 ClientSampled :
 K210-0-2

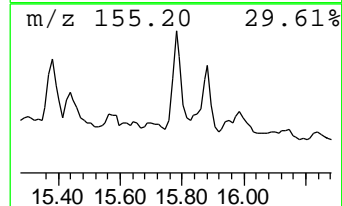
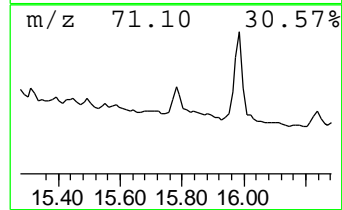
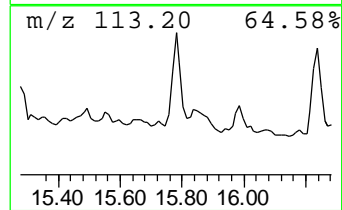
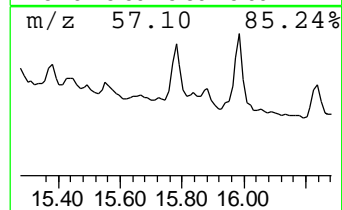
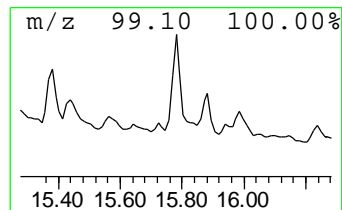
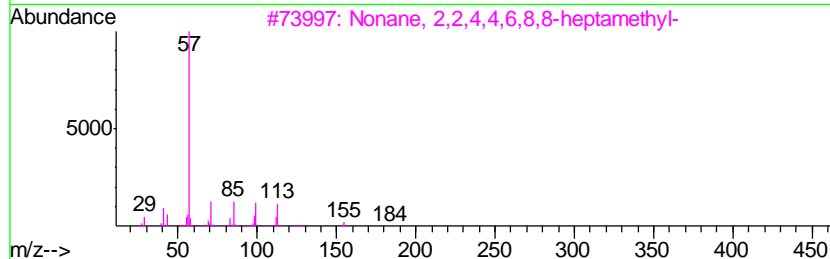
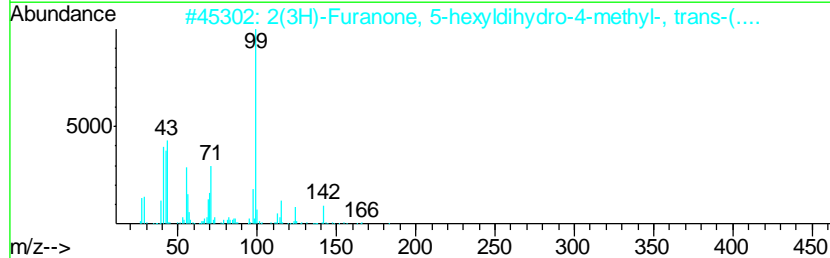
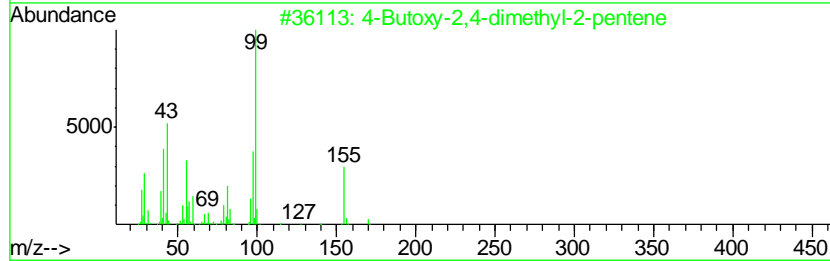
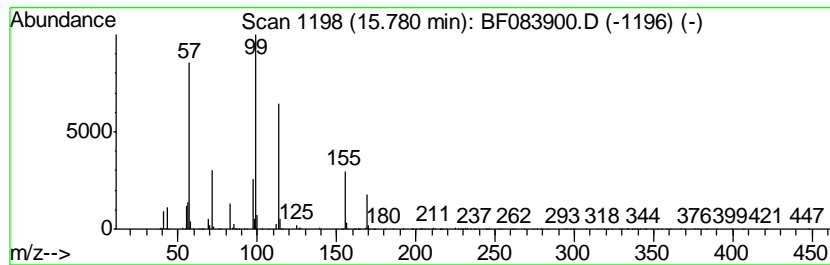
Quant Method : Z:\HPCHEM1\BNA_F\METHODS\8270-BF121815.M
 Quant Title : ASP BNA STANDARDS FOR 5 POINT CALIBRATION

TIC Library : C:\DATABASE\NIST02.L
 TIC Integration Parameters: LSCINT.P

 Peak Number 16 unknown15.78 Concentration Rank 8

R.T.	EstConc	Area	Relative to ISTD	R.T.
15.78	20.00 ng	1390530	Perylene-d12	15.54

Hit#	of	Tentative ID	MW	MolForm	CAS#	Qual
1	5	4-Butoxy-2,4-dimethyl-2-pentene	170	C11H22O	1000159-08-7	49
2		2(3H)-Furanone, 5-hexyldihydro-4...	184	C11H20O2	125133-98-4	47
3		Nonane, 2,2,4,4,6,8,8-heptamethyl-	226	C16H34	004390-04-9	38
4		Hexane, 2,5-dimethyl-	114	C8H18	000592-13-2	37
5		4H-Imidazol-4-one, 2-amino-1,5-d...	99	C3H5N3O	000503-86-6	35



Data Path : Z:\HPCHEM1\BNA_F\DATA\BF121815\
 Data File : BF083900.D
 Acq On : 18 Dec 2015 6:40
 Operator : UM/SJ
 Sample : G4759-01
 Misc :
 ALS Vial : 21 Sample Multiplier: 1

Instrument :
 BNA_F
 ClientSampleID :
 K210-0-2

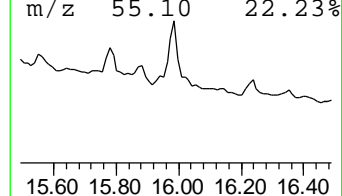
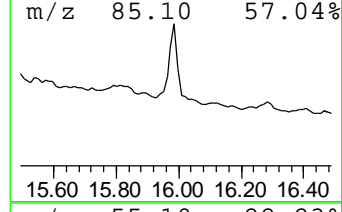
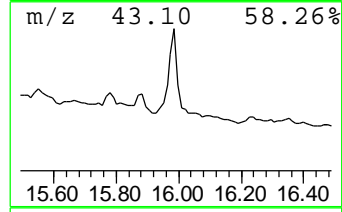
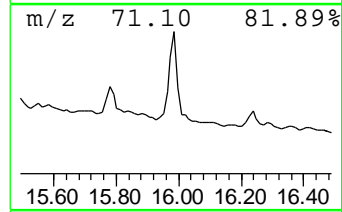
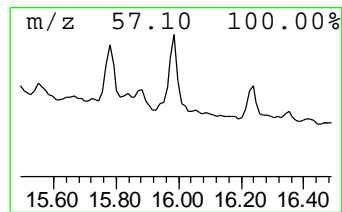
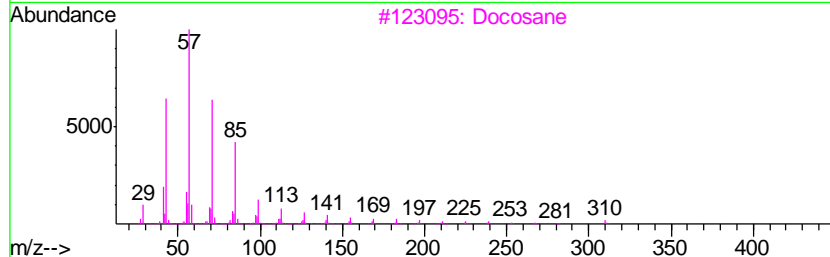
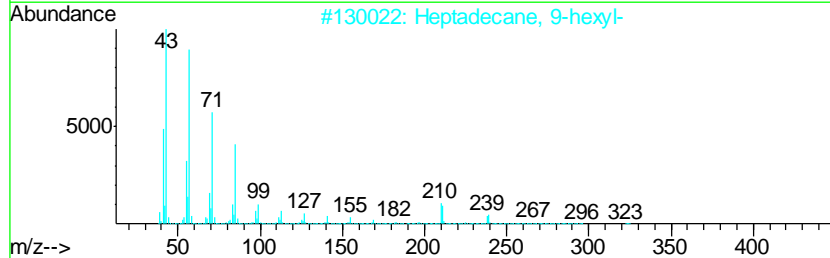
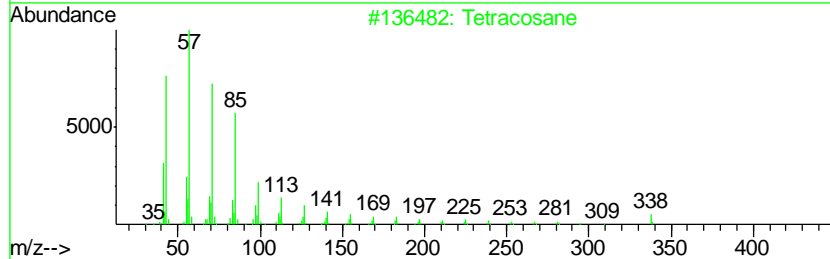
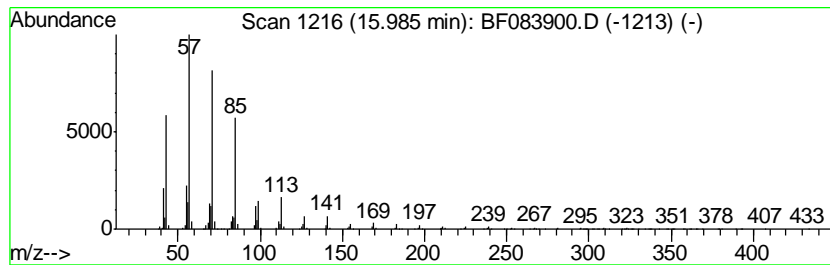
Quant Method : Z:\HPCHEM1\BNA_F\METHODS\8270-BF121815.M
 Quant Title : ASP BNA STANDARDS FOR 5 POINT CALIBRATION

TIC Library : C:\DATABASE\NIST02.L
 TIC Integration Parameters: LSCINT.P

 Peak Number 17 Tetracosane Concentration Rank 4

R.T.	EstConc	Area	Relative to ISTD	R.T.
15.99	31.78 ng	2209320	Perylene-d12	15.54

Hit#	of	Tentative ID	MW	MolForm	CAS#	Qual
1	5	Tetracosane	338	C24H50	000646-31-1	92
2		Heptadecane, 9-hexyl-	324	C23H48	055124-79-3	90
3		Docosane	310	C22H46	000629-97-0	87
4		Octacosane	394	C28H58	000630-02-4	87
5		Nonadecane	268	C19H40	000629-92-5	87



Data Path : Z:\HPCHEM1\BNA_F\DATA\BF121815\
 Data File : BF083900.D
 Acq On : 18 Dec 2015 6:40
 Operator : UM/SJ
 Sample : G4759-01
 Misc :
 ALS Vial : 21 Sample Multiplier: 1

Instrument :
 BNA_F
 ClientSampleID :
 K210-0-2

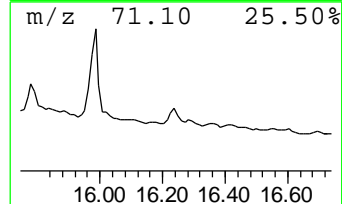
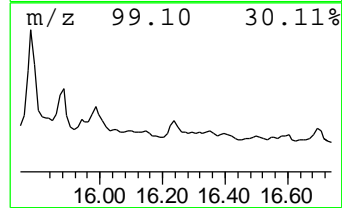
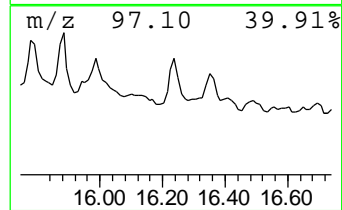
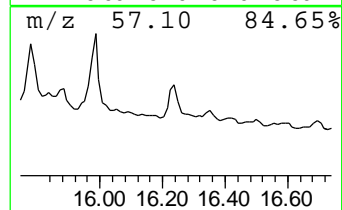
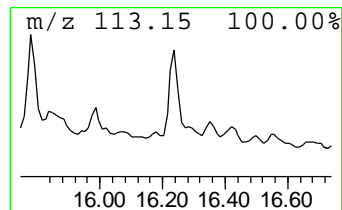
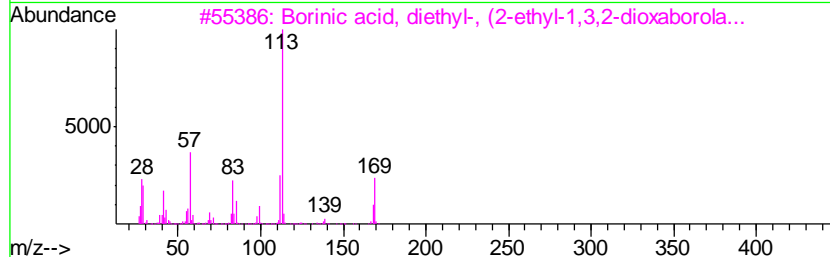
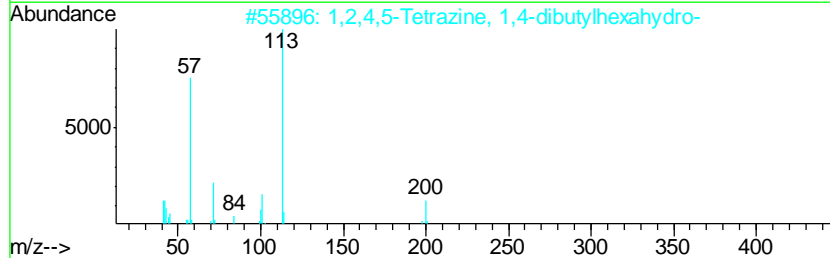
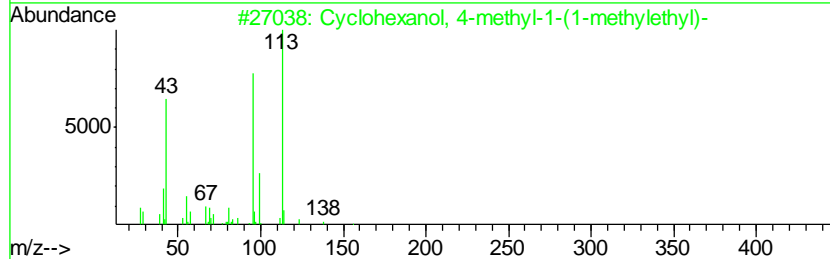
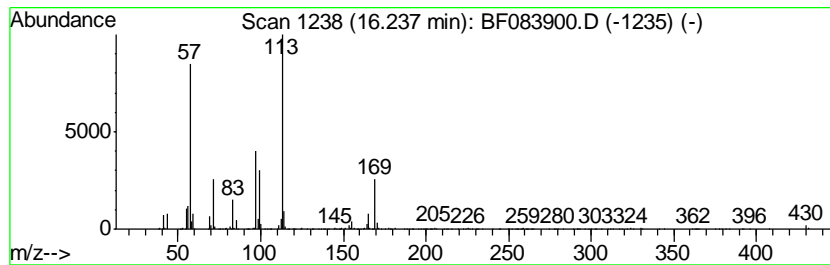
Quant Method : Z:\HPCHEM1\BNA_F\METHODS\8270-BF121815.M
 Quant Title : ASP BNA STANDARDS FOR 5 POINT CALIBRATION

TIC Library : C:\DATABASE\NIST02.L
 TIC Integration Parameters: LSCINT.P

 Peak Number 18 unknown16.24 Concentration Rank 10

R.T.	EstConc	Area	Relative to ISTD	R.T.
16.24	15.86 ng	1102350	Perylene-d12	15.54

Hit#	of	Tentative ID	MW	MolForm	CAS#	Qual
1	5	Cyclohexanol, 4-methyl-1-(1-meth...	156	C10H20O	000470-65-5	43
2		1,2,4,5-Tetrazine, 1,4-dibutylhe...	200	C10H24N4	035035-70-2	38
3		Borinic acid, diethyl-, (2-ethyl...	198	C9H20B2O3	058163-56-7	37
4		Methyl 2,3,4-tri-O-acetyl-6-O-me...	334	C14H22O9	072945-53-0	35
5		Pyrimidine, 2-fluoro-4-amino-	113	C4H4FN3	096548-91-3	27



Data Path : Z:\HPCHEM1\BNA_F\DATA\BF121815\
 Data File : BF083900.D
 Acq On : 18 Dec 2015 6:40
 Operator : UM/SJ
 Sample : G4759-01
 Misc :
 ALS Vial : 21 Sample Multiplier: 1

Instrument :
 BNA_F
 ClientSampleID :
 K210-0-2

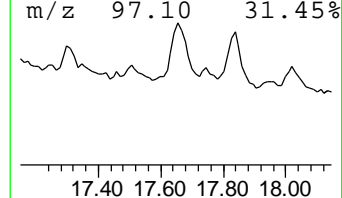
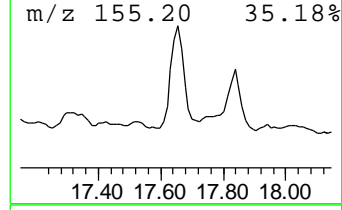
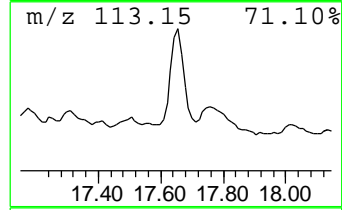
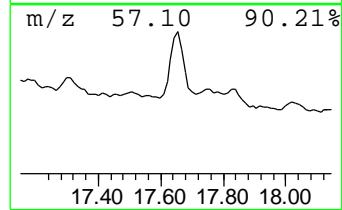
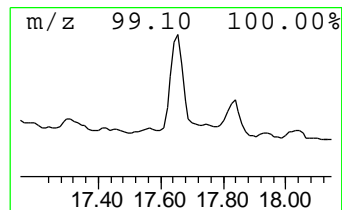
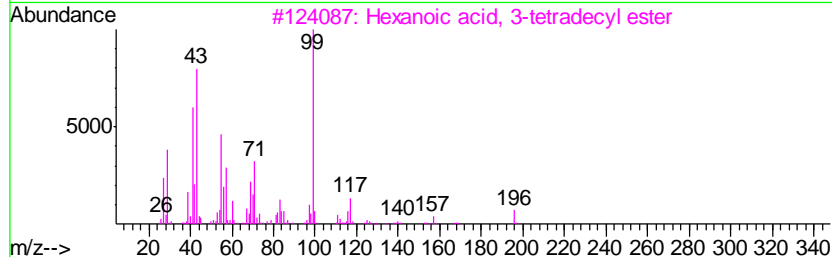
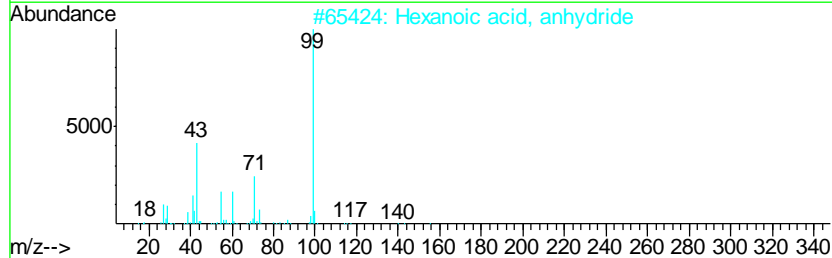
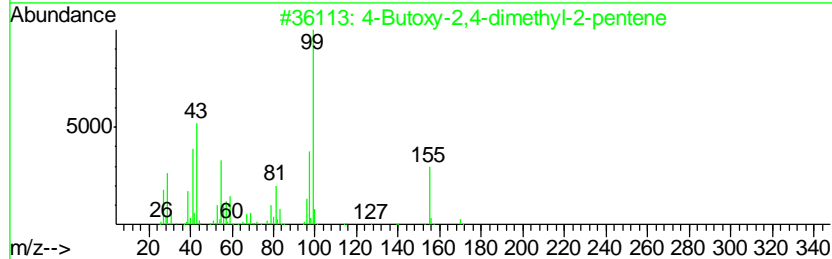
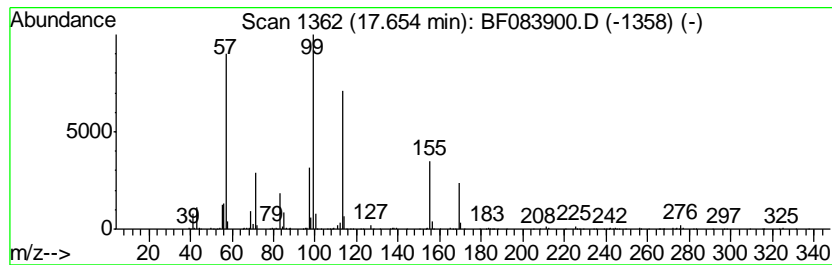
Quant Method : Z:\HPCHEM1\BNA_F\METHODS\8270-BF121815.M
 Quant Title : ASP BNA STANDARDS FOR 5 POINT CALIBRATION

TIC Library : C:\DATABASE\NIST02.L
 TIC Integration Parameters: LSCINT.P

 Peak Number 19 unknown17.65 Concentration Rank 9

R.T.	EstConc	Area	Relative to ISTD	R.T.
17.65	17.54 ng	1219330	Perylene-d12	15.54

Hit#	of	Tentative ID	MW	MolForm	CAS#	Qual
1	5	4-Butoxy-2,4-dimethyl-2-pentene	170	C11H22O	1000159-08-7	46
2		Hexanoic acid, anhydride	214	C12H22O3	002051-49-2	35
3		Hexanoic acid, 3-tetradecyl ester	312	C20H40O2	1000279-29-7	35
4		Hexane, 2,5-dimethyl-	114	C8H18	000592-13-2	32
5		1,4-Dioxaspiro[4.5]decane, 7-met...	156	C9H16O2	000935-46-6	30



Data Path : Z:\HPCHEM1\BNA_F\DATA\BF121815\
 Data File : BF083900.D
 Acq On : 18 Dec 2015 6:40
 Operator : UM/SJ
 Sample : G4759-01
 Misc :
 ALS Vial : 21 Sample Multiplier: 1

Instrument :
 BNA_F
 ClientSampleID :
 K210-0-2

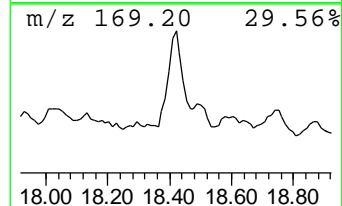
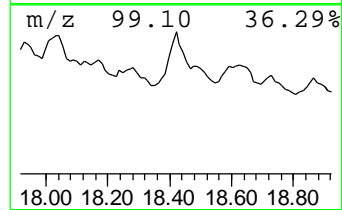
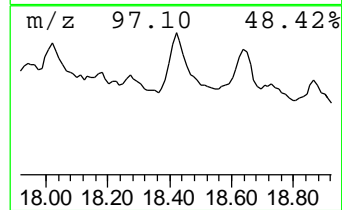
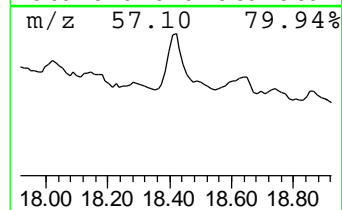
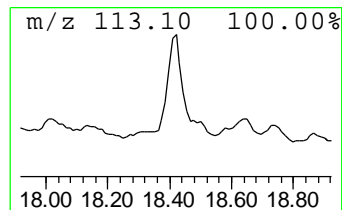
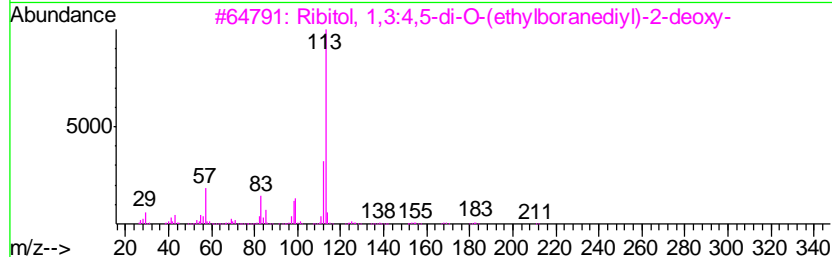
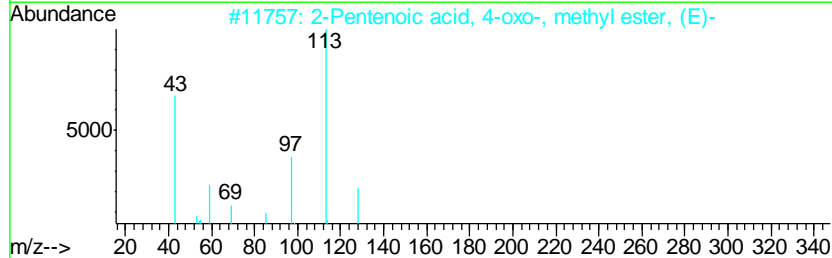
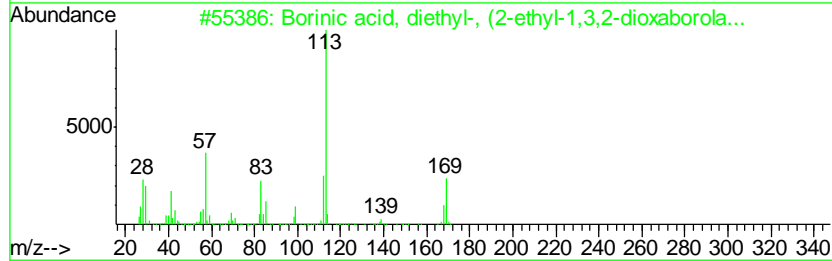
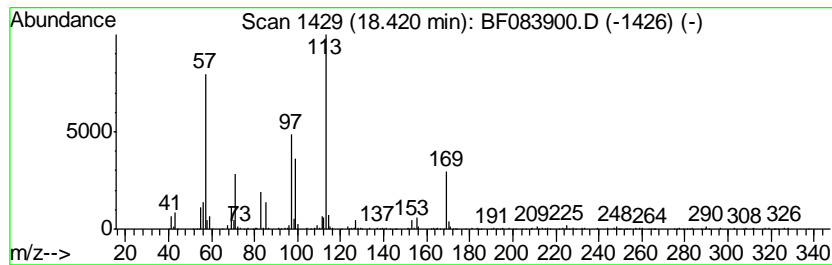
Quant Method : Z:\HPCHEM1\BNA_F\METHODS\8270-BF121815.M
 Quant Title : ASP BNA STANDARDS FOR 5 POINT CALIBRATION

TIC Library : C:\DATABASE\NIST02.L
 TIC Integration Parameters: LSCINT.P

 Peak Number 20 unknown18.42 Concentration Rank 17

R.T.	EstConc	Area	Relative to ISTD	R.T.
18.42	7.52 ng	522694	Perylene-d12	15.54

Hit#	of	Tentative ID	MW	MolForm	CAS#	Qual
1	5	Borinic acid, diethyl-, (2-ethyl...	198	C9H20B2O3	058163-56-7	47
2		2-Pentenoic acid, 4-oxo-, methyl...	128	C6H8O3	002833-24-1	43
3		Ribitol, 1,3:4,5-di-O-(ethylbora...	212	C9H18B2O4	1000149-52-8	37
4		1H-Pyrazole, 4-nitro-	113	C3H3N3O2	002075-46-9	35
5		3,5-Heptanedione, 2,6-dimethyl-	156	C9H16O2	018362-64-6	35



Data Path : Z:\HPCHEM1\BNA_F\DATA\BF121815\
 Data File : BF083900.D
 Acq On : 18 Dec 2015 6:40
 Operator : UM/SJ
 Sample : G4759-01
 Misc :
 ALS Vial : 21 Sample Multiplier: 1

Instrument :
 BNA_F
 ClientSampleId :
 K210-0-2

Quant Method : Z:\HPCHEM1\BNA_F\METHODS\8270-BF121815.M
 Quant Title : ASP BNA STANDARDS FOR 5 POINT CALIBRATION

TIC Library : C:\DATABASE\NIST02.L
 TIC Integration Parameters: LSCINT.P

TIC Top Hit name	RT	EstConc	Units	Response	--Internal Standard--			
					#	RT	Resp	Conc
2-Pentanone, 4-hy...	5.06	10.2	ng	243367	1	6.88	478385	20.0
1S-.alpha.-Pinene	6.16	7.0	ng	167739	1	6.88	478385	20.0
unknown6.65	6.65	50.9	ng	1217500	1	6.88	478385	20.0
unknown6.69	6.69	10.3	ng	246624	1	6.88	478385	20.0
unknown6.94	6.94	12.3	ng	293830	1	6.88	478385	20.0
Cyclohexene, 1-me...	7.00	8.4	ng	202216	1	6.88	478385	20.0
unknown7.73	7.73	6.9	ng	207690	2	8.16	600851	20.0
Bicyclo[2.2.1]hep...	7.90	7.4	ng	222831	2	8.16	600851	20.0
2,2,5,5-Tetrameth...	10.86	10.4	ng	269789	4	11.41	517974	20.0
unknown11.26	11.26	20.0	ng	517974	4	11.41	517974	20.0
1-Hexanol, 2,2-di...	11.88	31.2	ng	808300	4	11.41	517974	20.0
2(3H)-Furanone, 5...	12.29	42.4	ng	1098610	4	11.41	517974	20.0
unknown14.59	14.59	20.0	ng	1053060	5	14.08	1053060	20.0
1,2,4,5-Tetrazine...	14.89	10.0	ng	694971	6	15.54	1390530	20.0
unknown15.78	15.78	20.0	ng	1390530	6	15.54	1390530	20.0
Tetracosane	15.99	31.8	ng	2209320	6	15.54	1390530	20.0
unknown16.24	16.24	15.9	ng	1102350	6	15.54	1390530	20.0
unknown17.65	17.65	17.5	ng	1219330	6	15.54	1390530	20.0
unknown18.42	18.42	7.5	ng	522694	6	15.54	1390530	20.0