

Data Path : Z:\svoasrv\HPCHEM1\BNA_F\Data\BF121824\
 Data File : BF140903.D
 Acq On : 18 Dec 2024 14:09
 Operator : RC/JU
 Sample : P5270-07DL2 20X
 Misc :
 ALS Vial : 9 Sample Multiplier: 1

Instrument :
 BNA_F
 ClientSampleId :
 MW12-20241212DL2

Quant Time: Dec 18 14:38:34 2024
 Quant Method : Z:\svoasrv\HPCHEM1\BNA_F\Methods\8270-BF121624.M
 Quant Title : ASP BNA STANDARDS FOR 5 POINT CALIBRATION
 QLast Update : Mon Dec 16 16:59:50 2024
 Response via : Initial Calibration

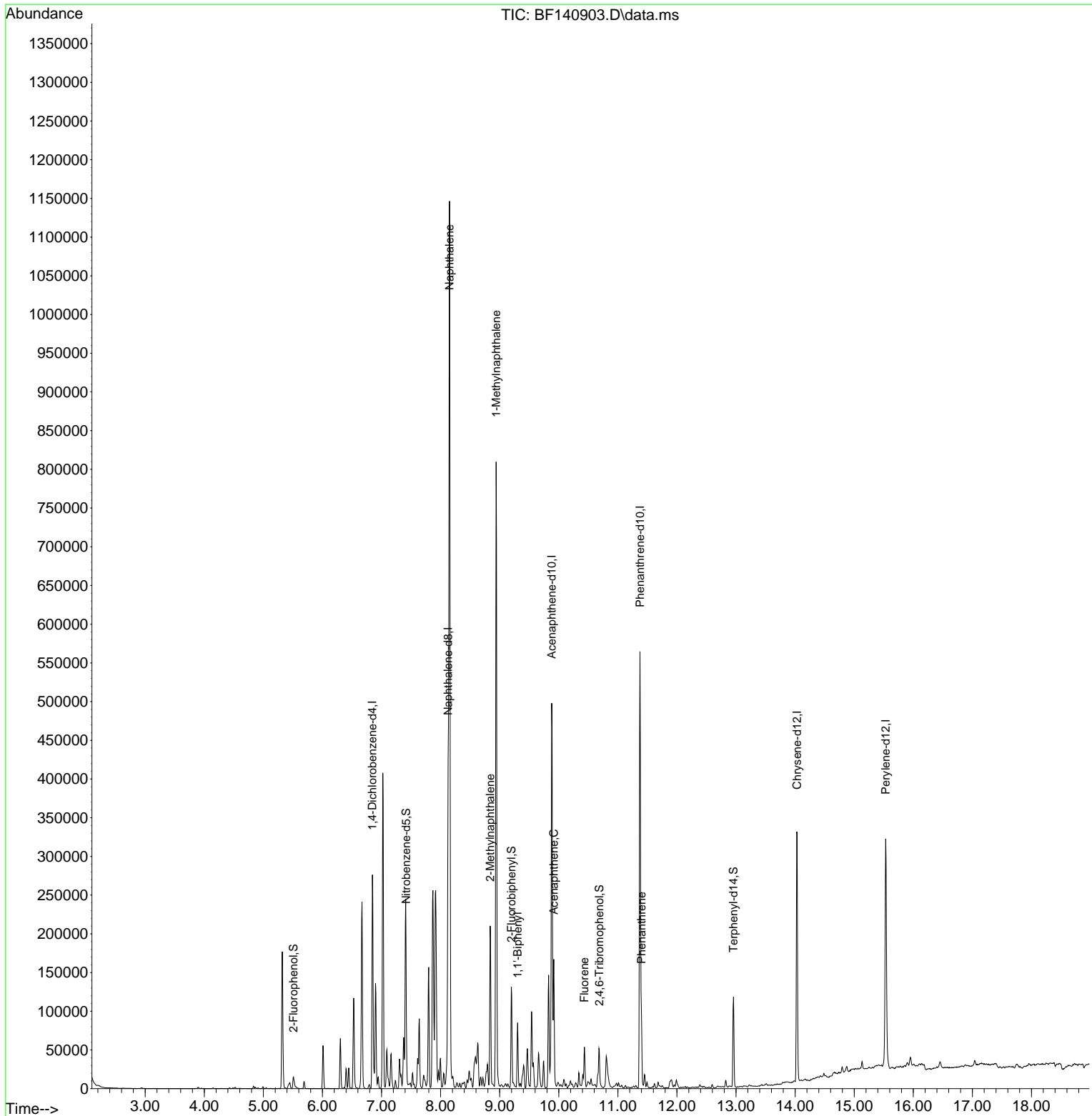
Compound	R.T.	QIon	Response	Conc	Units	Dev(Min)
Internal Standards						
1) 1,4-Dichlorobenzene-d4	6.845	152	61168	20.000	ng	0.00
21) Naphthalene-d8	8.128	136	250458	20.000	ng	0.00
39) Acenaphthene-d10	9.880	164	151708	20.000	ng	0.00
64) Phenanthrene-d10	11.374	188	301660	20.000	ng	0.00
76) Chrysene-d12	14.033	240	164695	20.000	ng	0.00
86) Perylene-d12	15.533	264	181077	20.000	ng	-0.01
System Monitoring Compounds						
5) 2-Fluorophenol	5.510	112	10519	2.831	ng	0.02
7) Phenol-d6	6.528	99	9418	1.914	ng	0.03
23) Nitrobenzene-d5	7.416	82	22844	4.563	ng	0.00
42) 2,4,6-Tribromophenol	10.686	330	10257	5.717	ng	0.00
45) 2-Fluorobiphenyl	9.198	172	57863	5.244	ng	0.00
79) Terphenyl-d14	12.957	244	58661	5.616	ng	0.00
Target Compounds						
31) Naphthalene	8.151	128	701165	50.964	ng	100
37) 2-Methylnaphthalene	8.839	142	82011	9.011	ng	99
38) 1-Methylnaphthalene	8.939	142	301927	33.545	ng	100
46) 1,1'-Biphenyl	9.304	154	38702	3.208	ng	98
52) Acenaphthene	9.916	154	48726	5.624	ng	99
58) Fluorene	10.433	166	27581m	2.490	ng	
71) Phenanthrene	11.398	178	50501	3.255	ng	99

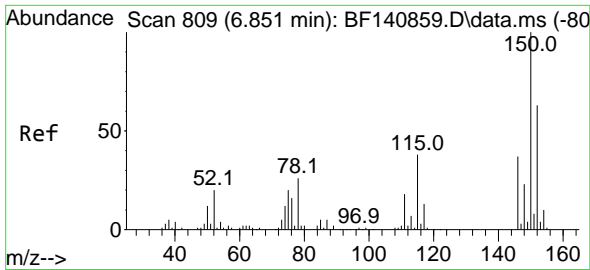
(#) = qualifier out of range (m) = manual integration (+) = signals summed

Data Path : Z:\svoasrv\HPCHEM1\BNA_F\Data\BF121824\
 Data File : BF140903.D
 Acq On : 18 Dec 2024 14:09
 Operator : RC/JU
 Sample : P5270-07DL2 20X
 Misc :
 ALS Vial : 9 Sample Multiplier: 1

Instrument :
 BNA_F
 ClientSampleId :
 MW12-20241212DL2

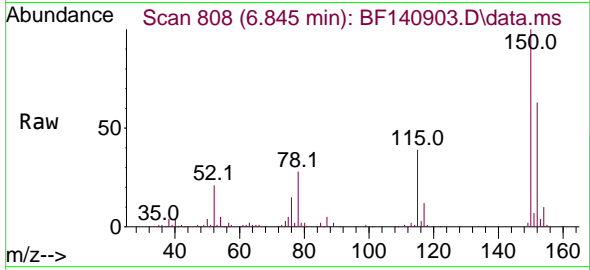
Quant Time: Dec 18 14:38:34 2024
 Quant Method : Z:\svoasrv\HPCHEM1\BNA_F\Methods\8270-BF121624.M
 Quant Title : ASP BNA STANDARDS FOR 5 POINT CALIBRATION
 QLast Update : Mon Dec 16 16:59:50 2024
 Response via : Initial Calibration



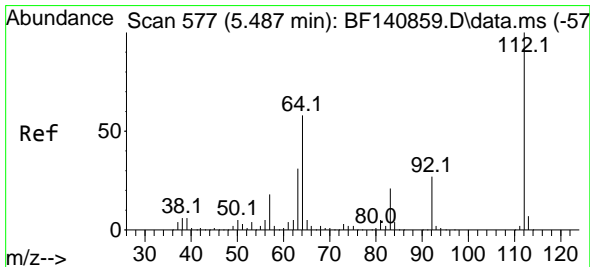
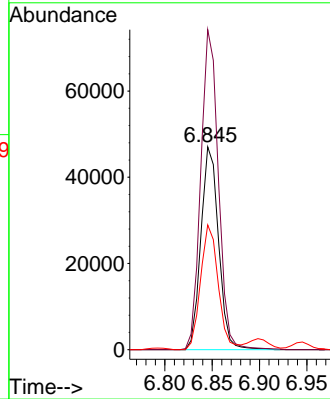
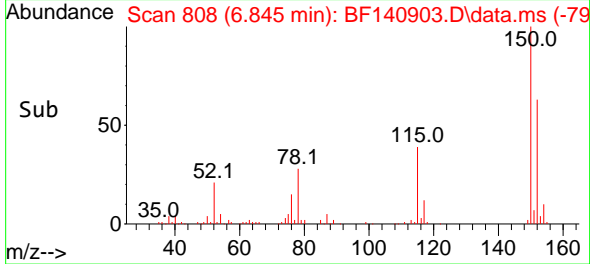


#1
 1,4-Dichlorobenzene-d4
 Concen: 20.000 ng
 RT: 6.845 min Scan# 80
 Delta R.T. -0.006 min
 Lab File: BF140903.D
 Acq: 18 Dec 2024 14:09

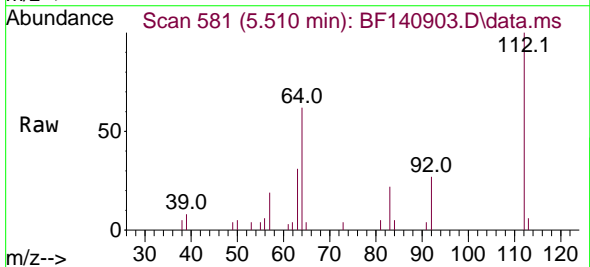
Instrument :
 BNA_F
 ClientSampleId :
 MW12-20241212DL2



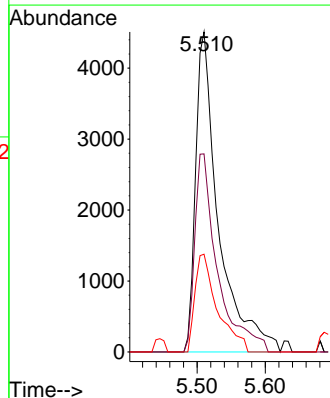
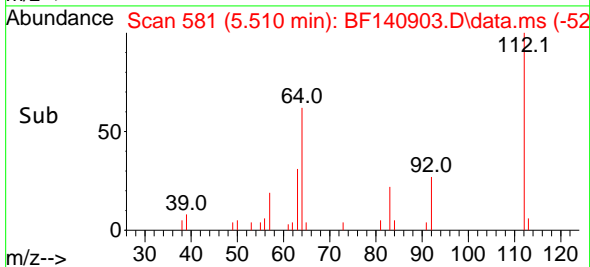
Tgt Ion:152 Resp: 61168
 Ion Ratio Lower Upper
 152 100
 150 157.7 127.9 191.9
 115 61.5 48.0 72.0

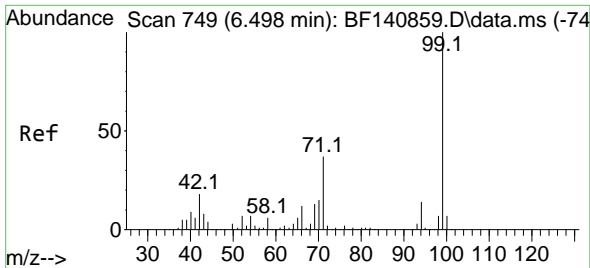


#5
 2-Fluorophenol
 Concen: 2.831 ng
 RT: 5.510 min Scan# 581
 Delta R.T. 0.023 min
 Lab File: BF140903.D
 Acq: 18 Dec 2024 14:09



Tgt Ion:112 Resp: 10519
 Ion Ratio Lower Upper
 112 100
 64 61.9 46.1 69.1
 63 30.6 24.9 37.3

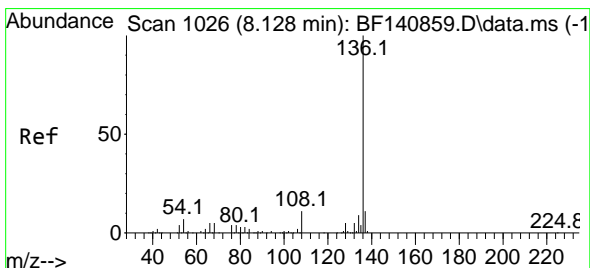
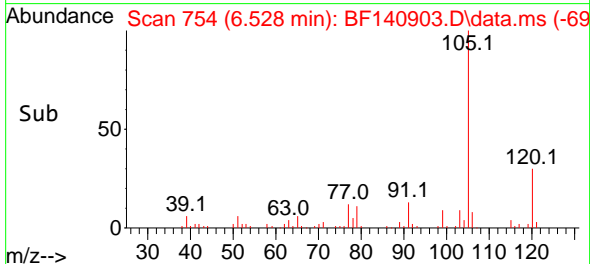
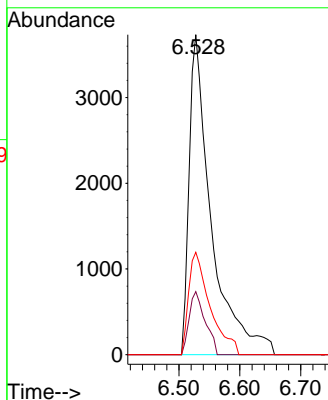
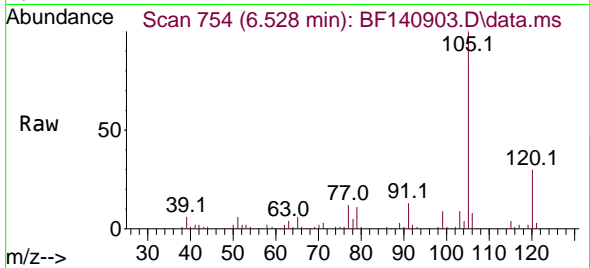




#7
 Phenol-d6
 Concen: 1.914 ng
 RT: 6.528 min Scan# 71
 Delta R.T. 0.029 min
 Lab File: BF140903.D
 Acq: 18 Dec 2024 14:09

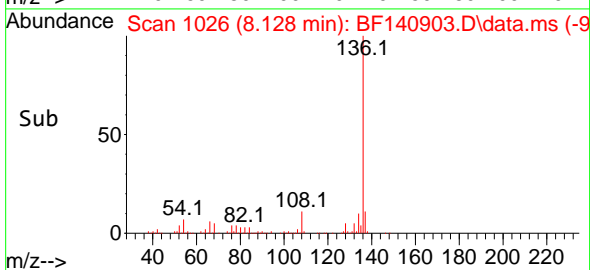
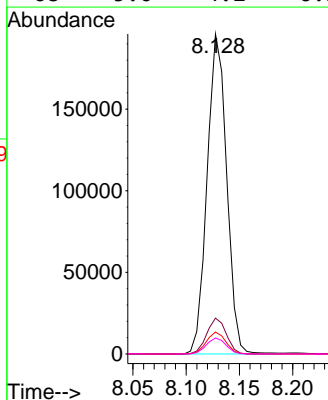
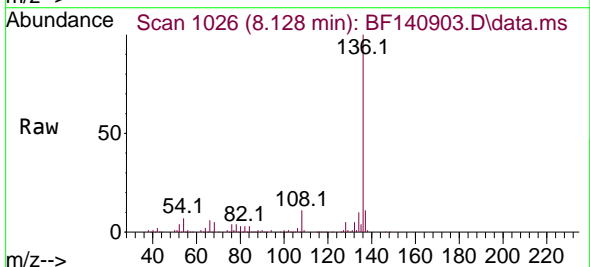
Instrument :
 BNA_F
 ClientSampleId :
 MW12-20241212DL2

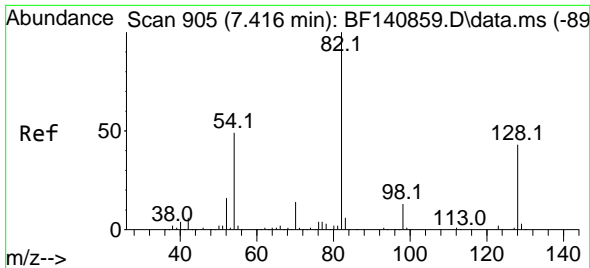
Tgt Ion	Resp	Ion Ratio	Lower	Upper
99	9418	100		
42	19.7	14.3		21.5
71	32.0	29.9		44.9



#21
 Naphthalene-d8
 Concen: 20.000 ng
 RT: 8.128 min Scan# 1026
 Delta R.T. -0.000 min
 Lab File: BF140903.D
 Acq: 18 Dec 2024 14:09

Tgt Ion	Resp	Ion Ratio	Lower	Upper
136	250458	100		
137	11.2	9.0		13.4
54	6.8	5.6		8.4
68	5.0	4.2		6.2

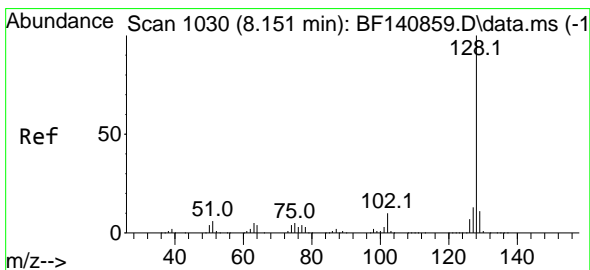
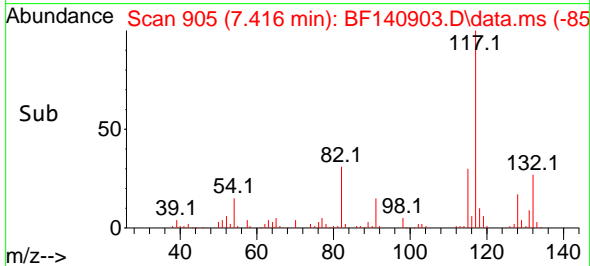
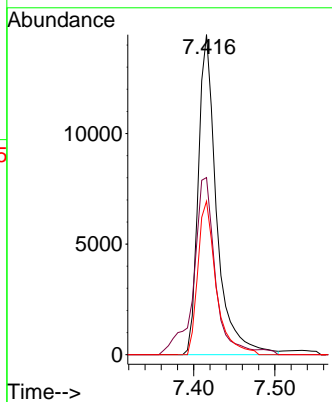
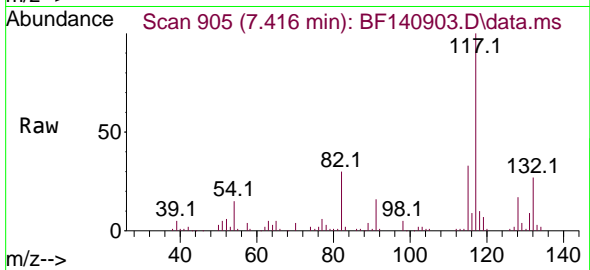




#23
 Nitrobenzene-d5
 Concen: 4.563 ng
 RT: 7.416 min Scan# 90
 Delta R.T. -0.000 min
 Lab File: BF140903.D
 Acq: 18 Dec 2024 14:09

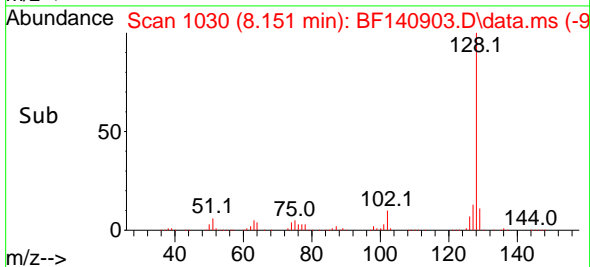
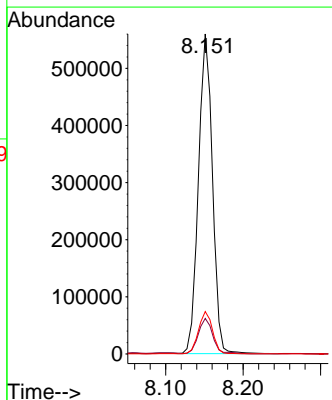
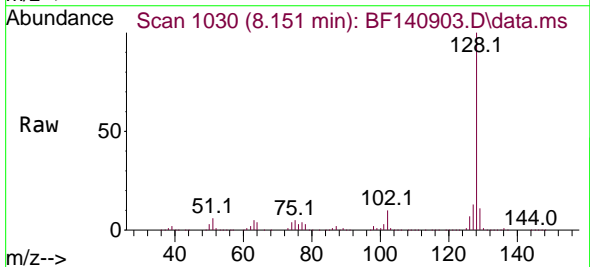
Instrument :
 BNA_F
 ClientSampleId :
 MW12-20241212DL2

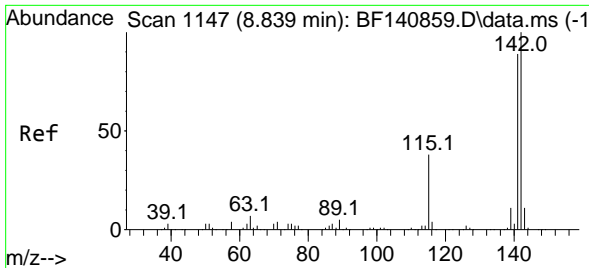
Tgt Ion	Resp	Lower	Upper
82	22844		
128	55.4	34.4	51.6
54	47.9	38.8	58.2



#31
 Naphthalene
 Concen: 50.964 ng
 RT: 8.151 min Scan# 1030
 Delta R.T. -0.000 min
 Lab File: BF140903.D
 Acq: 18 Dec 2024 14:09

Tgt Ion	Resp	Lower	Upper
128	701165		
129	11.1	8.9	13.3
127	13.3	10.6	16.0

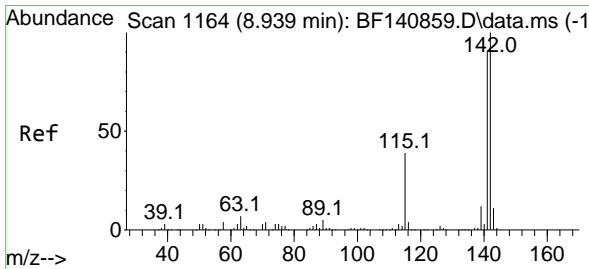
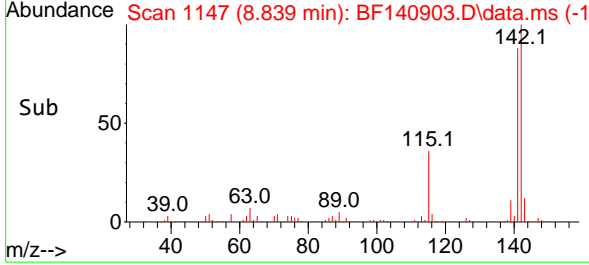
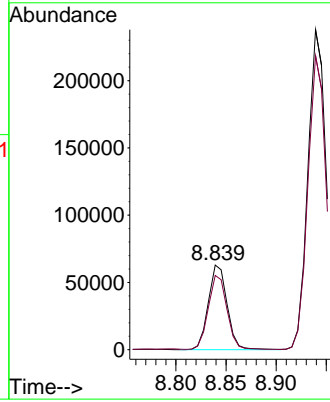
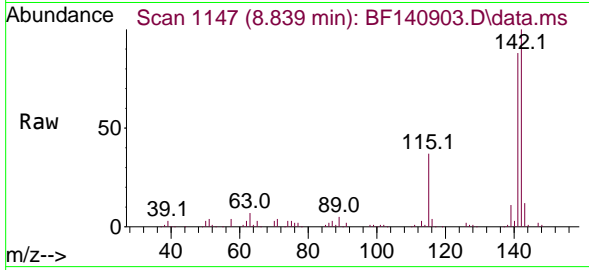




#37
 2-Methylnaphthalene
 Concen: 9.011 ng
 RT: 8.839 min Scan# 1147
 Delta R.T. -0.000 min
 Lab File: BF140903.D
 Acq: 18 Dec 2024 14:09

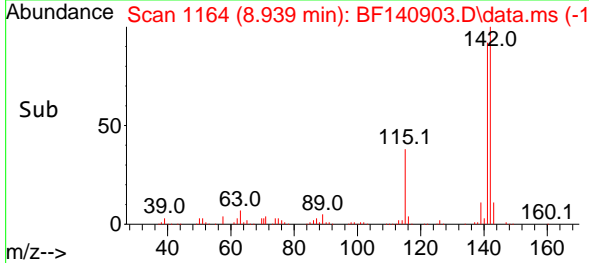
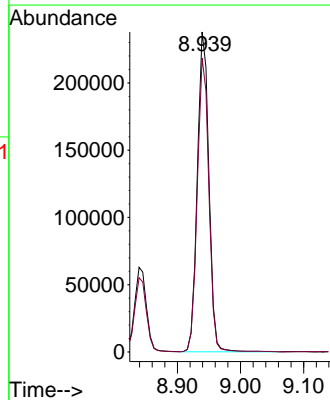
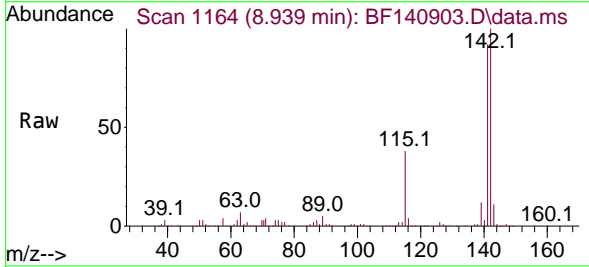
Instrument : BNA_F
 ClientSampleId : MW12-20241212DL2

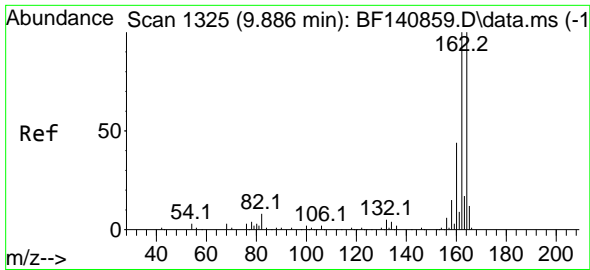
Tgt Ion:142 Resp: 82011
 Ion Ratio Lower Upper
 142 100
 141 87.9 71.0 106.6



#38
 1-Methylnaphthalene
 Concen: 33.545 ng
 RT: 8.939 min Scan# 1164
 Delta R.T. -0.000 min
 Lab File: BF140903.D
 Acq: 18 Dec 2024 14:09

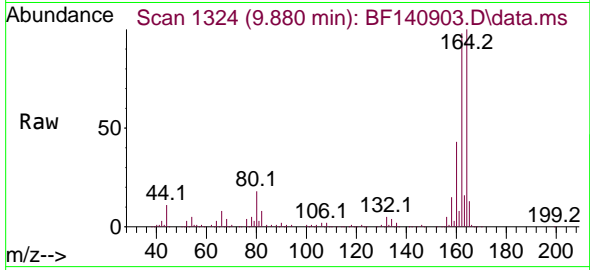
Tgt Ion:142 Resp: 301927
 Ion Ratio Lower Upper
 142 100
 141 91.9 73.4 110.0



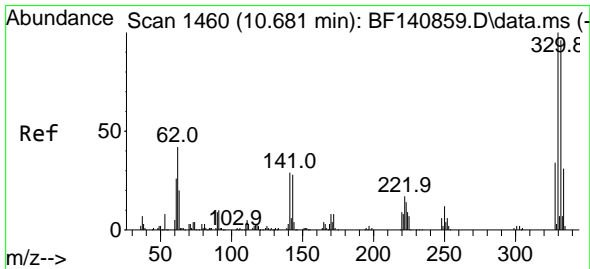
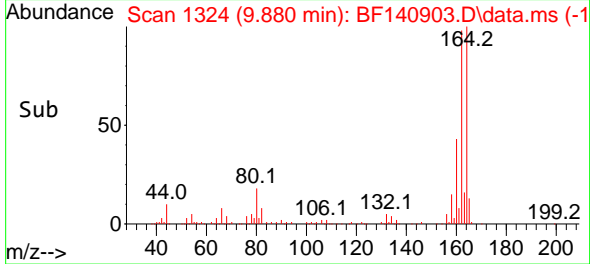
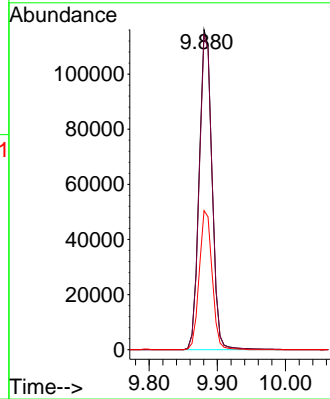


#39
 Acenaphthene-d10
 Concen: 20.000 ng
 RT: 9.880 min Scan# 11
 Delta R.T. -0.006 min
 Lab File: BF140903.D
 Acq: 18 Dec 2024 14:09

Instrument :
 BNA_F
 ClientSampleId :
 MW12-20241212DL2

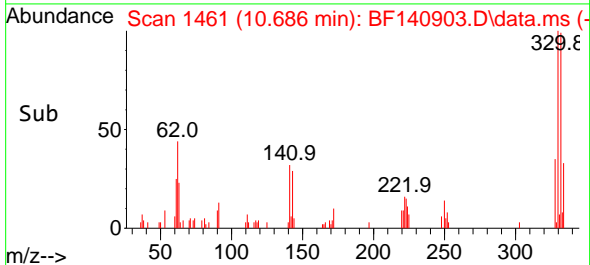
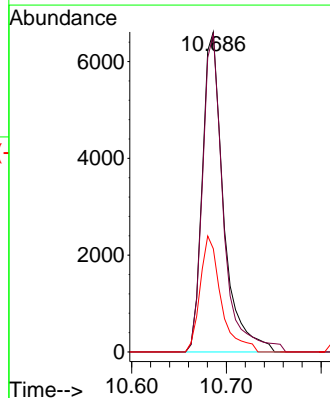
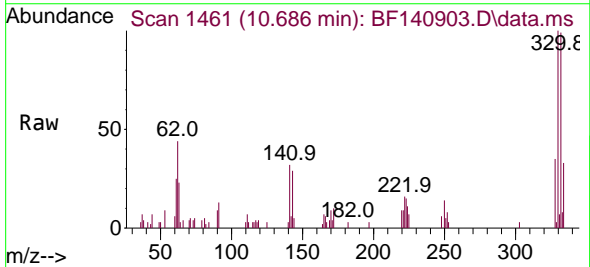


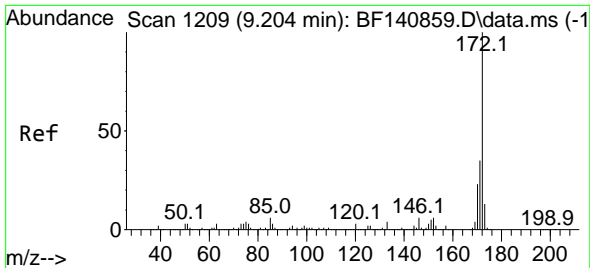
Tgt Ion:164 Resp: 151708
 Ion Ratio Lower Upper
 164 100
 162 98.2 79.9 119.9
 160 43.4 35.2 52.8



#42
 2,4,6-Tribromophenol
 Concen: 5.717 ng
 RT: 10.686 min Scan# 1461
 Delta R.T. 0.006 min
 Lab File: BF140903.D
 Acq: 18 Dec 2024 14:09

Tgt Ion:330 Resp: 10257
 Ion Ratio Lower Upper
 330 100
 332 97.5 76.2 114.4
 141 36.0 24.9 37.3



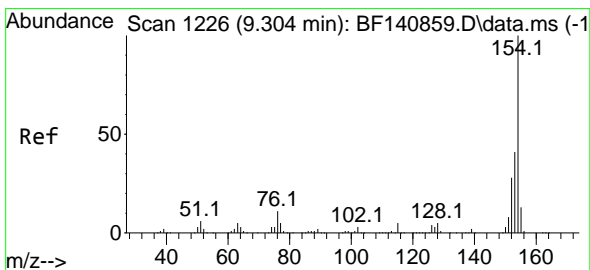
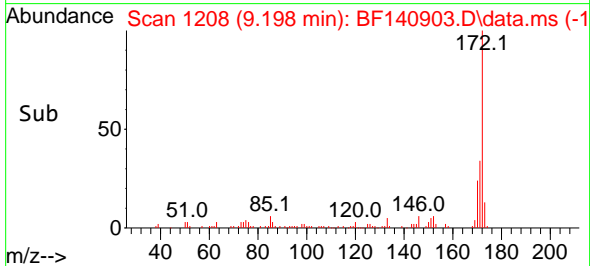
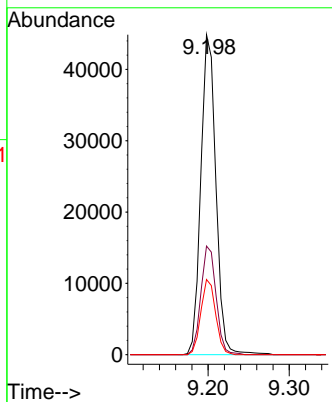
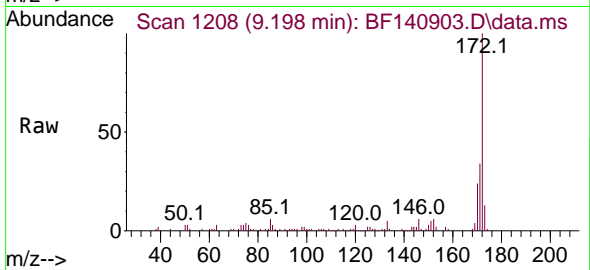


#45
 2-Fluorobiphenyl
 Concen: 5.244 ng
 RT: 9.198 min Scan# 11
 Delta R.T. -0.006 min
 Lab File: BF140903.D
 Acq: 18 Dec 2024 14:09

Instrument :
 BNA_F
 ClientSampleId :
 MW12-20241212DL2

Tgt Ion:172 Resp: 57863

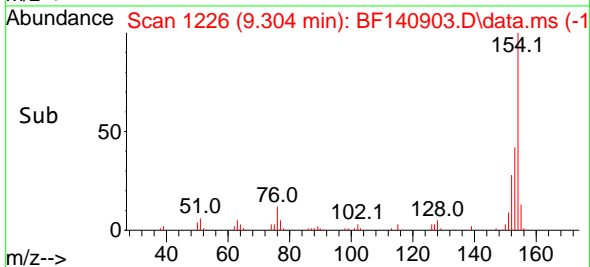
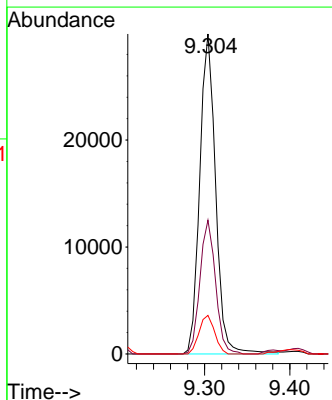
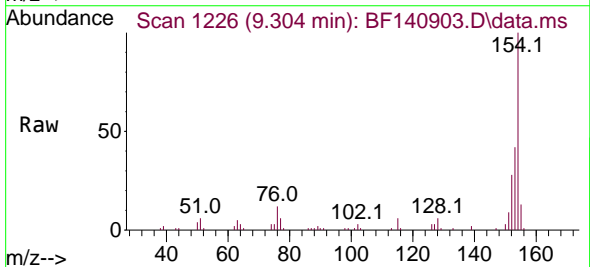
Ion	Ratio	Lower	Upper
172	100		
171	34.0	28.4	42.6
170	23.5	18.6	28.0

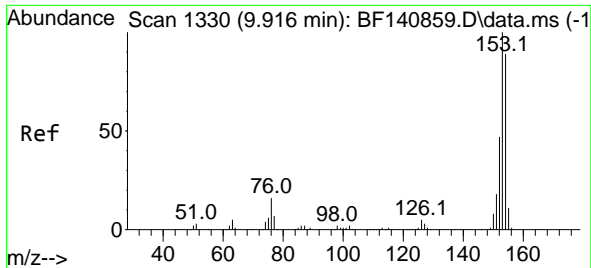


#46
 1,1'-Biphenyl
 Concen: 3.208 ng
 RT: 9.304 min Scan# 1226
 Delta R.T. -0.000 min
 Lab File: BF140903.D
 Acq: 18 Dec 2024 14:09

Tgt Ion:154 Resp: 38702

Ion	Ratio	Lower	Upper
154	100		
153	41.8	20.8	60.8
76	12.1	0.0	31.0



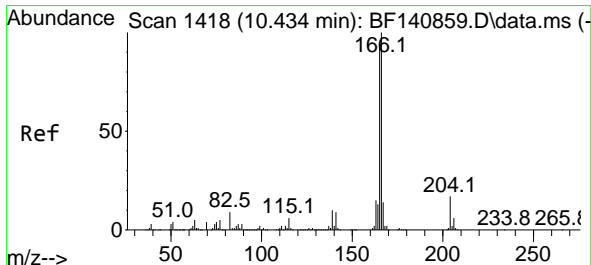
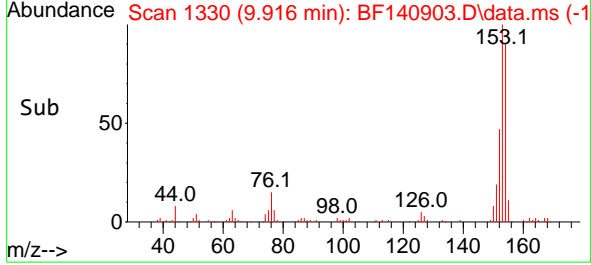
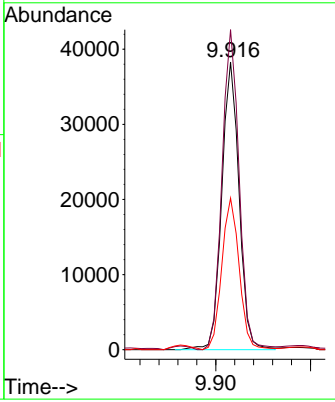
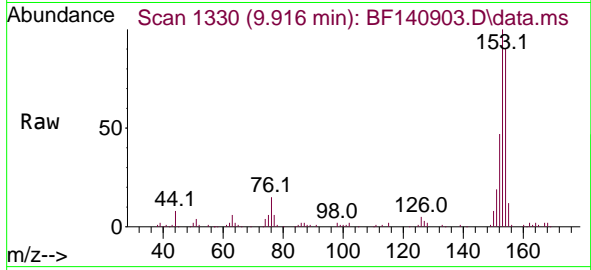


#52
 Acenaphthene
 Concen: 5.624 ng
 RT: 9.916 min Scan# 111
 Delta R.T. -0.000 min
 Lab File: BF140903.D
 Acq: 18 Dec 2024 14:09

Instrument : BNA_F
 ClientSampleId : MW12-20241212DL2

Tgt Ion:154 Resp: 48726

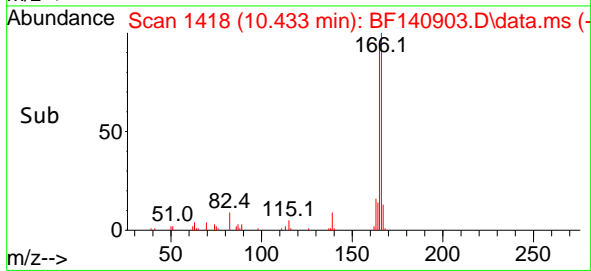
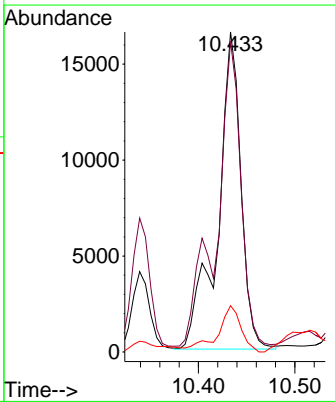
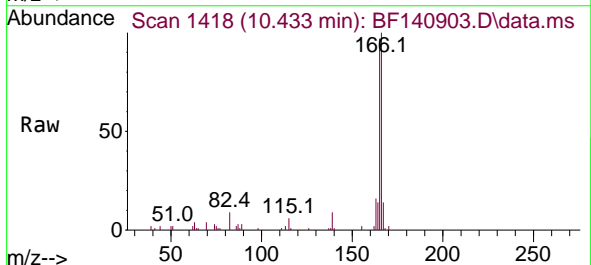
Ion	Ratio	Lower	Upper
154	100		
153	111.2	89.9	134.9
152	52.7	42.6	63.8

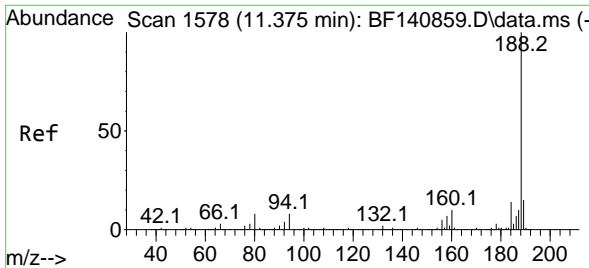


#58
 Fluorene
 Concen: 2.490 ng m
 RT: 10.433 min Scan# 1418
 Delta R.T. -0.000 min
 Lab File: BF140903.D
 Acq: 18 Dec 2024 14:09

Tgt Ion:166 Resp: 27581

Ion	Ratio	Lower	Upper
166	100		
165	97.0	75.1	112.7
167	14.4	11.1	16.7



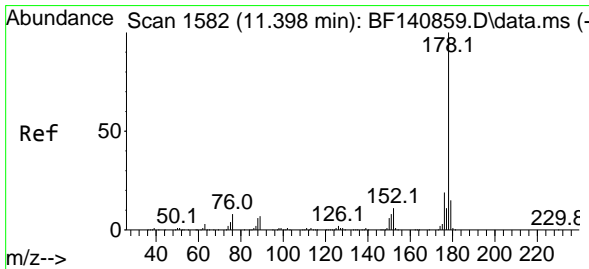
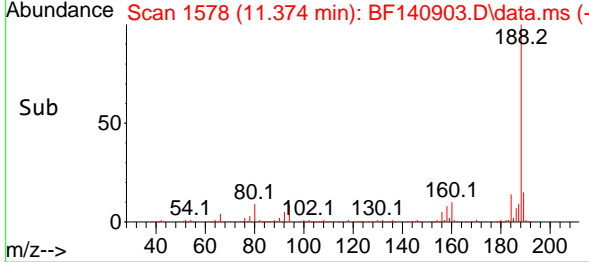
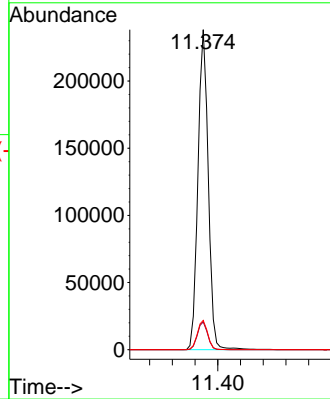
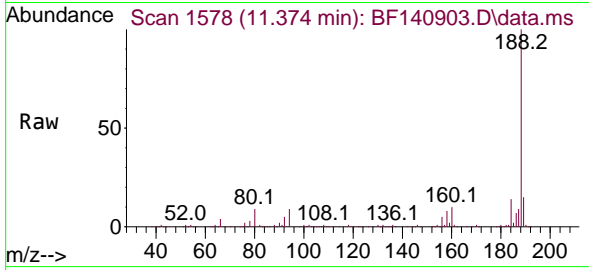


#64
 Phenanthrene-d10
 Concen: 20.000 ng
 RT: 11.374 min Scan# 11
 Delta R.T. -0.000 min
 Lab File: BF140903.D
 Acq: 18 Dec 2024 14:09

Instrument :
 BNA_F
 ClientSampleId :
 MW12-20241212DL2

Tgt Ion:188 Resp: 301660

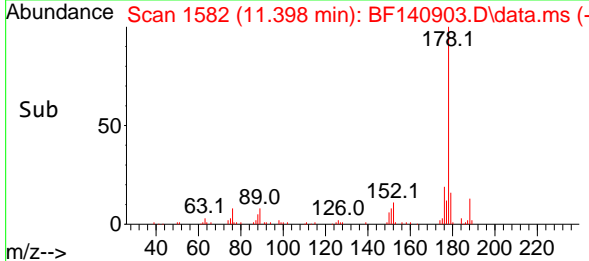
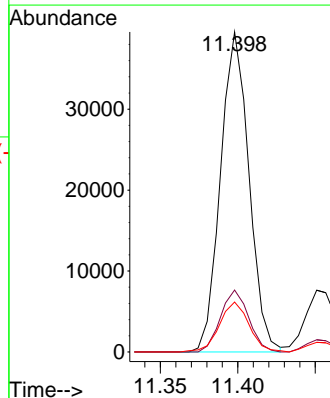
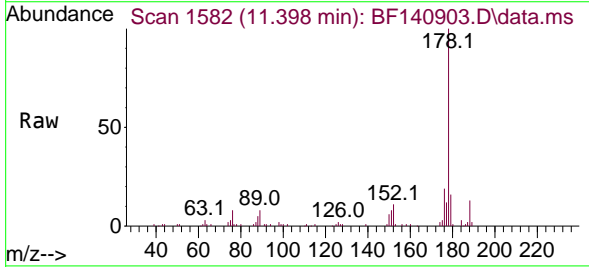
Ion	Ratio	Lower	Upper
188	100		
94	8.7	6.4	9.6
80	9.2	6.8	10.2

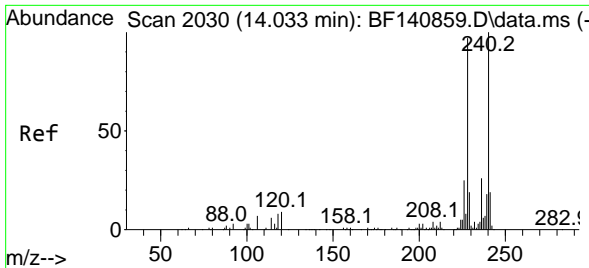


#71
 Phenanthrene
 Concen: 3.255 ng
 RT: 11.398 min Scan# 1582
 Delta R.T. -0.000 min
 Lab File: BF140903.D
 Acq: 18 Dec 2024 14:09

Tgt Ion:178 Resp: 50501

Ion	Ratio	Lower	Upper
178	100		
176	19.3	15.4	23.2
179	15.6	12.1	18.1



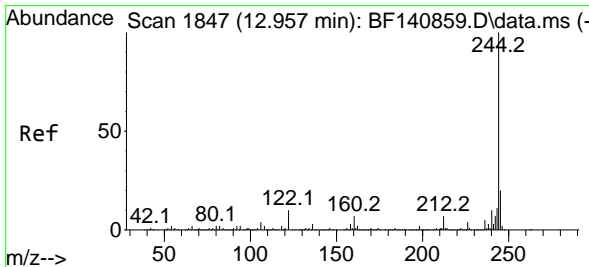
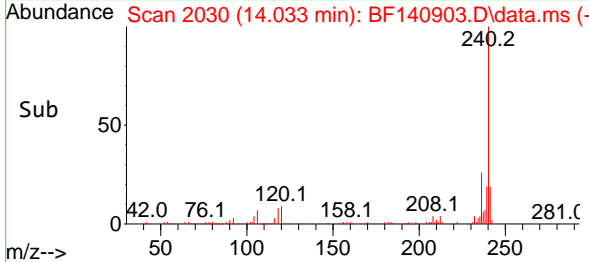
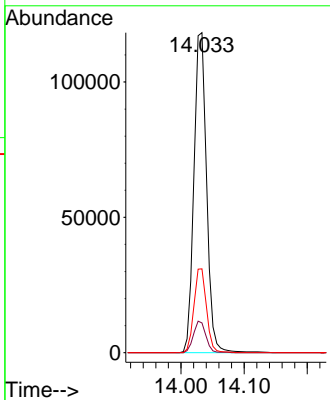
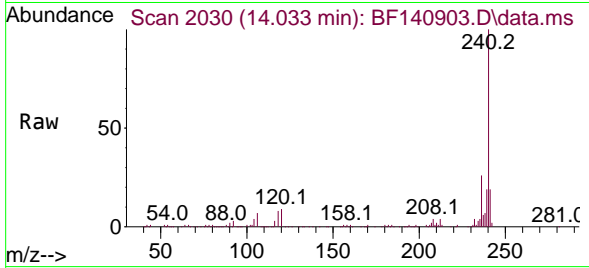


#76
 Chrysene-d12
 Concen: 20.000 ng
 RT: 14.033 min Scan# 2030
 Delta R.T. -0.000 min
 Lab File: BF140903.D
 Acq: 18 Dec 2024 14:09

Instrument : BNA_F
 ClientSampleId : MW12-20241212DL2

Tgt Ion:240 Resp: 164695

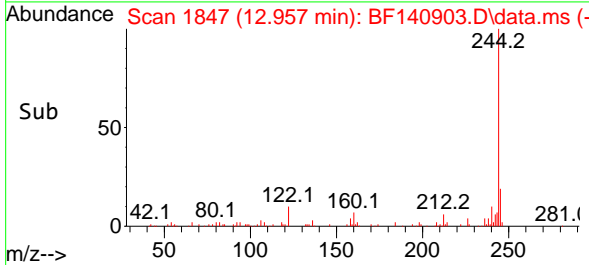
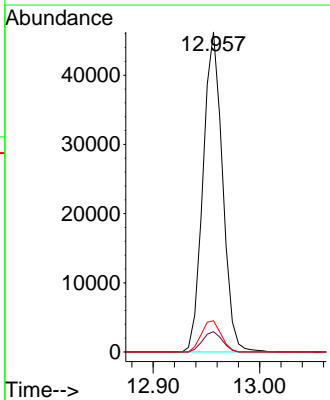
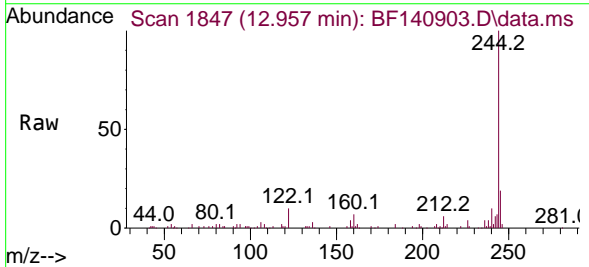
Ion	Ratio	Lower	Upper
240	100		
120	9.3	7.6	11.4
236	26.2	20.5	30.7

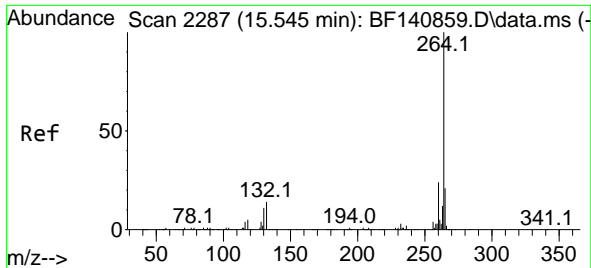


#79
 Terphenyl-d14
 Concen: 5.616 ng
 RT: 12.957 min Scan# 1847
 Delta R.T. -0.000 min
 Lab File: BF140903.D
 Acq: 18 Dec 2024 14:09

Tgt Ion:244 Resp: 58661

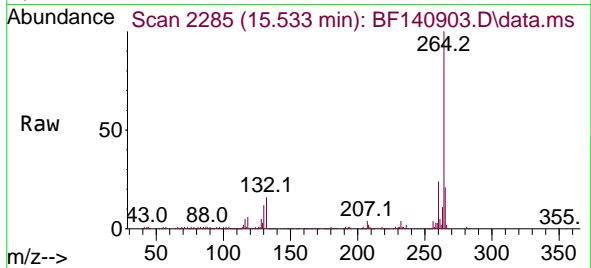
Ion	Ratio	Lower	Upper
244	100		
212	6.4	5.6	8.4
122	9.8	8.2	12.2





#86
 Perylene-d12
 Concen: 20.000 ng
 RT: 15.533 min Scan# 21
 Delta R.T. -0.012 min
 Lab File: BF140903.D
 Acq: 18 Dec 2024 14:09

Instrument :
 BNA_F
 ClientSampleId :
 MW12-20241212DL2



Tgt Ion:264 Resp: 181077
 Ion Ratio Lower Upper
 264 100
 260 24.3 19.1 28.7
 265 21.5 17.0 25.4

