

Data Path : Z:\HPCHEM1\BNA F\DATA\BF121917\  
 Data File : BF101550.D  
 Acq On : 20 Dec 2017 4:57  
 Operator : SJ/JU  
 Sample : I6956-02  
 Misc :  
 ALS Vial : 33 Sample Multiplier: 1

Instrument :  
 BNA\_F  
 ClientSampleId :  
 121417--DBRI-E-U-M

Quant Time: Dec 20 07:06:54 2017  
 Quant Method : Z:\HPCHEM1\BNA F\METHODS\8270-BF121417.M  
 Quant Title : ASP BNA STANDARDS FOR 5 POINT CALIBRATION  
 QLast Update : Mon Dec 18 15:38:59 2017  
 Response via : Initial Calibration

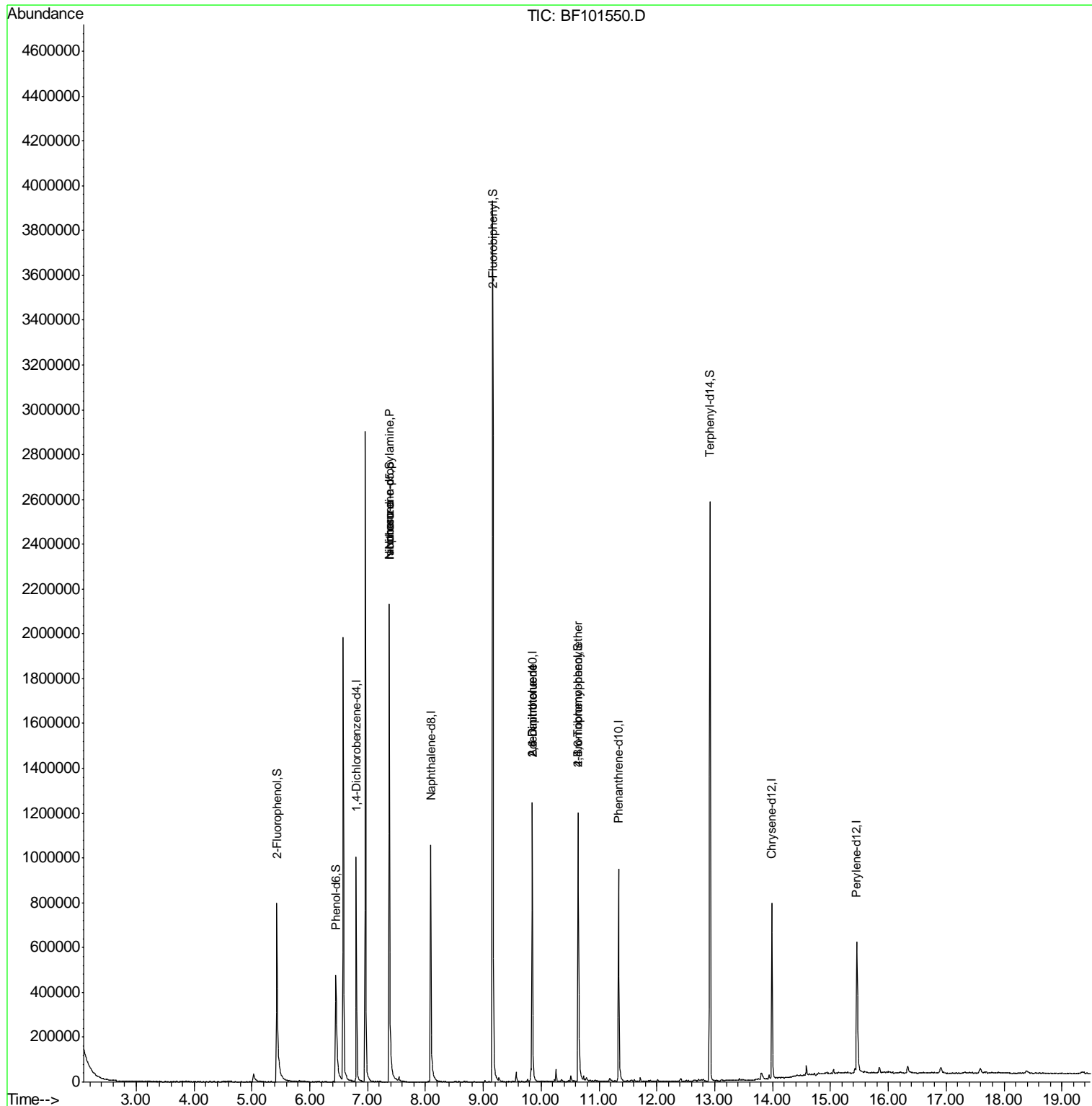
Internal Standards	R.T.	QIon	Response	Conc	Units	Dev(Min)
1) 1,4-Dichlorobenzene-d4	6.80	152	155472	20.00	ng	0.00
21) Naphthalene-d8	8.09	136	626109	20.00	ng	0.00
38) Acenaphthene-d10	9.85	164	259656	20.00	ng	0.00
63) Phenanthrene-d10	11.34	188	420428	20.00	ng	0.00
75) Chrysene-d12	13.99	240	311003	20.00	ng	0.00
86) Perylene-d12	15.46	264	339755	20.00	ng	0.00
System Monitoring Compounds						
5) 2-Fluorophenol	5.43	112	358264	34.33	ng	0.00
7) Phenol-d6	6.45	99	273932	21.09	ng	0.00
23) Nitrobenzene-d5	7.37	82	868391	77.21	ng	0.00
41) 2,4,6-Tribromophenol	10.64	330	169690	67.82	ng	0.00
44) 2-Fluorobiphenyl	9.16	172	1367645	81.71	ng	0.00
78) Terphenyl-d14	12.92	244	954783	74.01	ng	0.00
Target Compounds						
19) n-Nitroso-di-n-propylamine	7.37	70	114518	13.424	ng	# 82
25) Isophorone	7.37	82	868386	38.486	ng	# 64
50) 2,6-Dinitrotoluene	9.85	165	32953	7.763	ng	# 26
56) 2,4-Dinitrotoluene	9.85	165	32953	6.890	ng	# 24
66) 4-Bromophenyl-phenylether	10.64	248	10726	2.271	ng	# 1

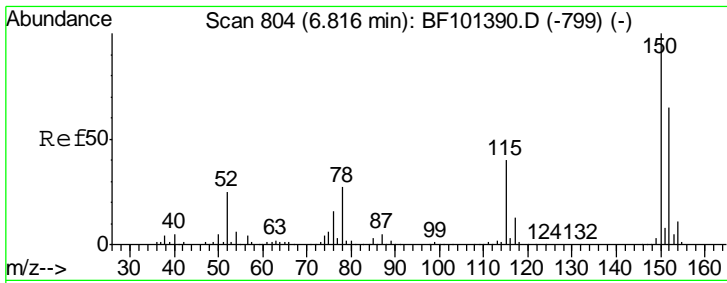
(#) = qualifier out of range (m) = manual integration (+) = signals summed

Data Path : Z:\HPCHEM1\BNA F\DATA\BF121917\  
 Data File : BF101550.D  
 Acq On : 20 Dec 2017 4:57  
 Operator : SJ/JU  
 Sample : I6956-02  
 Misc :  
 ALS Vial : 33 Sample Multiplier: 1

Instrument :  
 BNA\_F  
 ClientSampleId :  
 121417--DBRI-E-U-M

Quant Time: Dec 20 07:06:54 2017  
 Quant Method : Z:\HPCHEM1\BNA F\METHODS\8270-BF121417.M  
 Quant Title : ASP BNA STANDARDS FOR 5 POINT CALIBRATION  
 QLast Update : Mon Dec 18 15:38:59 2017  
 Response via : Initial Calibration

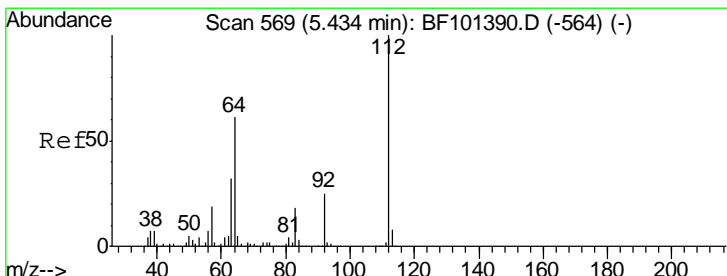
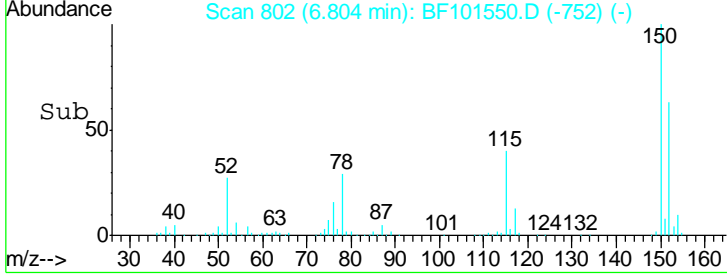
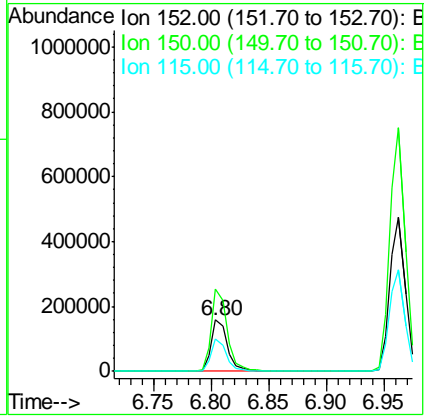
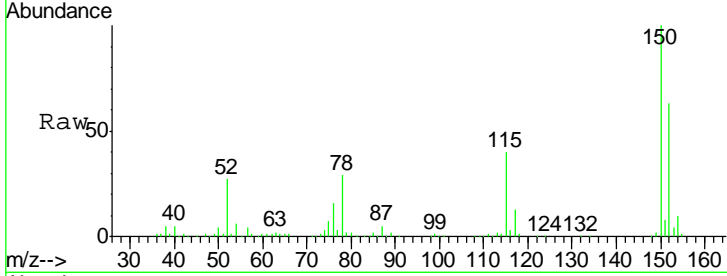




#1  
 1,4-Dichlorobenzene-d4  
 Concen: 20.000 ng  
 RT: 6.80 min Scan# 802  
 Delta R.T. -0.01 min  
 Lab File: BF101550.D  
 Acq: 20 Dec 2017 4:57

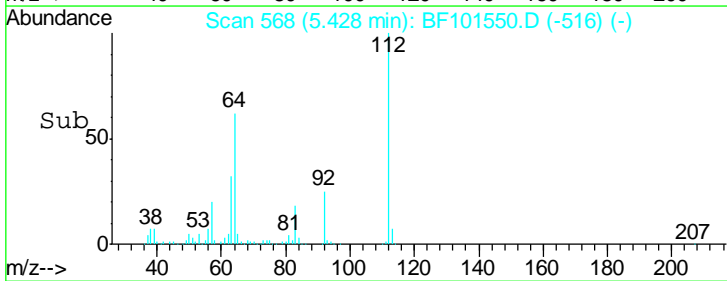
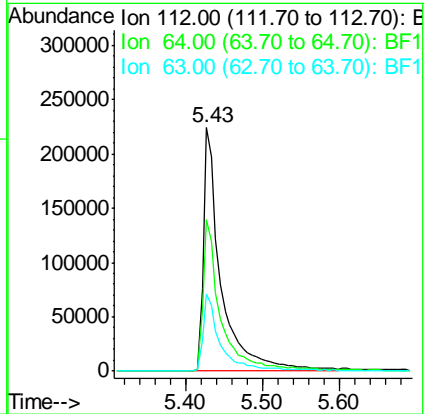
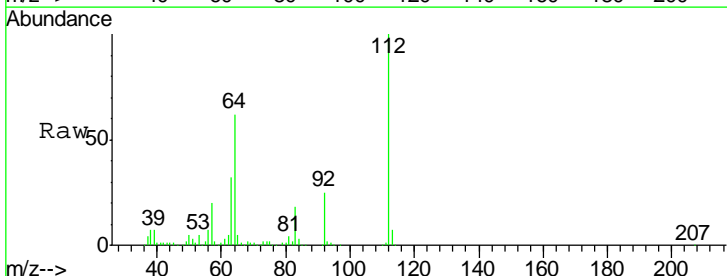
**Instrument :**  
 BNA\_F  
**ClientSampleId :**  
 121417--DBRI-E-U-M

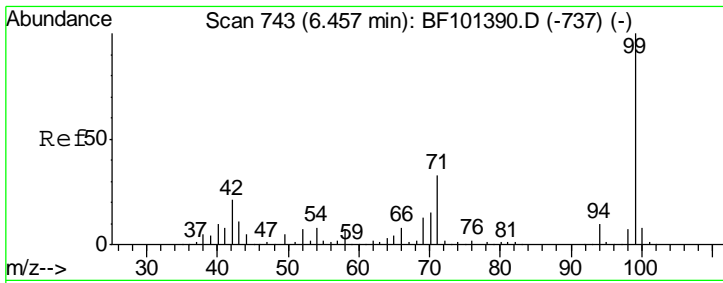
Tgt Ion	Resp	Lower	Upper
152	155472		
150	159.0	124.6	186.8
115	63.6	50.1	75.1



#5  
 2-Fluorophenol  
 Concen: 34.325 ng  
 RT: 5.43 min Scan# 568  
 Delta R.T. 0.01 min  
 Lab File: BF101550.D  
 Acq: 20 Dec 2017 4:57

Tgt Ion	Resp	Lower	Upper
112	358264		
64	62.1	47.9	71.9
63	31.9	23.7	35.5

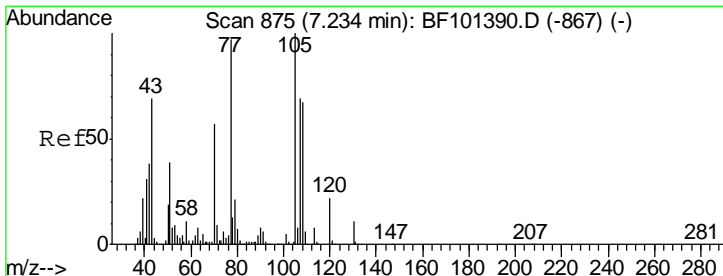
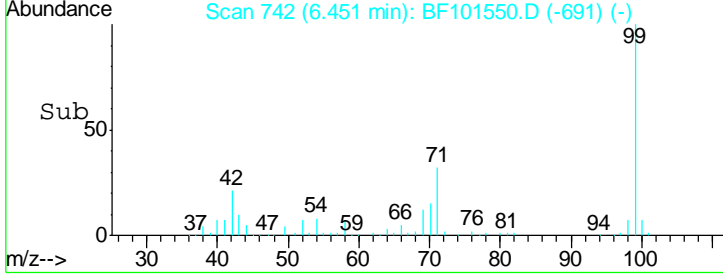
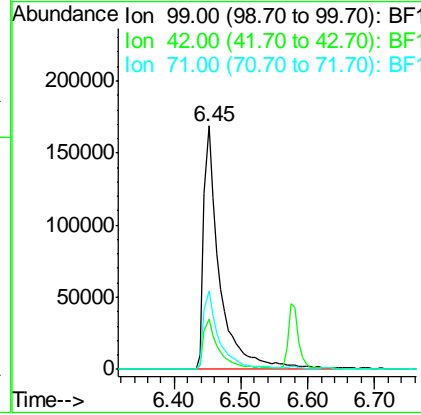
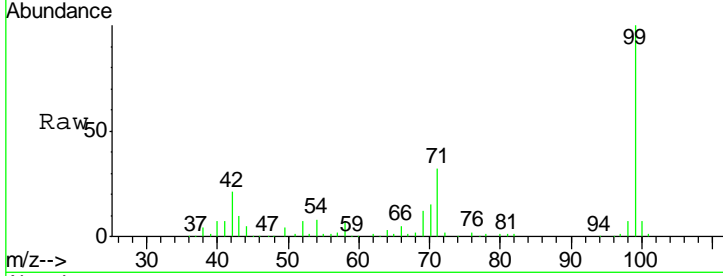




#7  
 Phenol-d6  
 Concen: 21.089 ng  
 RT: 6.45 min Scan# 742  
 Delta R.T. -0.00 min  
 Lab File: BF101550.D  
 Acq: 20 Dec 2017 4:57

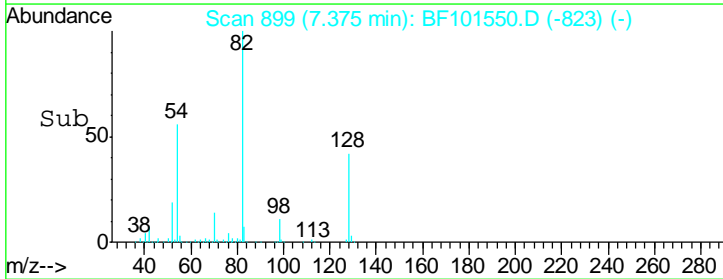
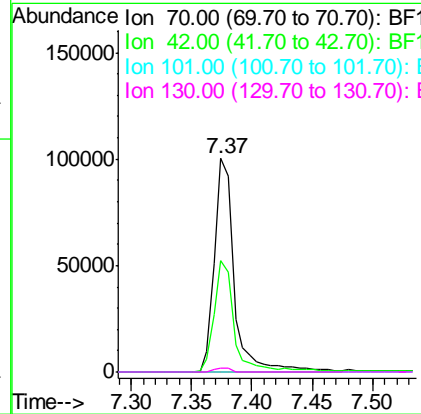
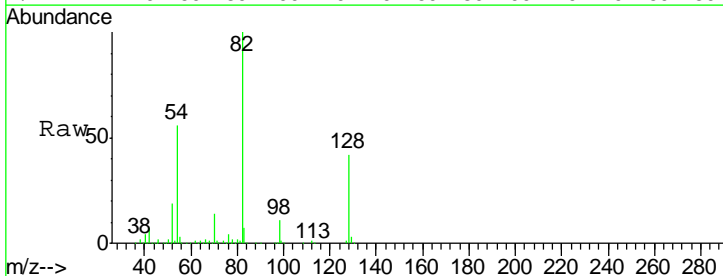
**Instrument :**  
 BNA\_F  
**ClientSampled :**  
 121417--DBRI-E-U-M

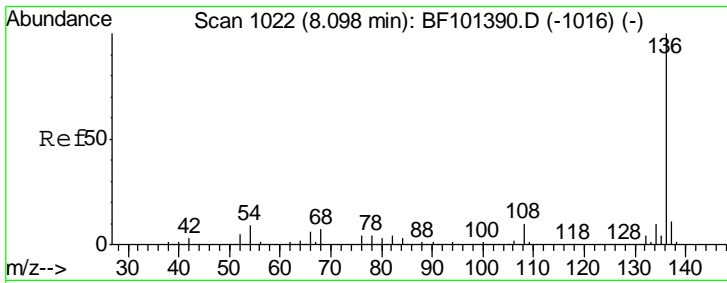
Tgt Ion	Resp	Lower	Upper
99	273932		
42	20.9	14.5	21.7
71	32.3	25.4	38.0



#19  
 n-Nitroso-di-n-propylamine  
 Concen: 13.424 ng  
 RT: 7.37 min Scan# 899  
 Delta R.T. 0.15 min  
 Lab File: BF101550.D  
 Acq: 20 Dec 2017 4:57

Tgt Ion	Resp	Lower	Upper
70	114518		
42	52.3	47.5	71.3
101	0.0	7.4	11.2#
130	1.9	16.6	25.0#

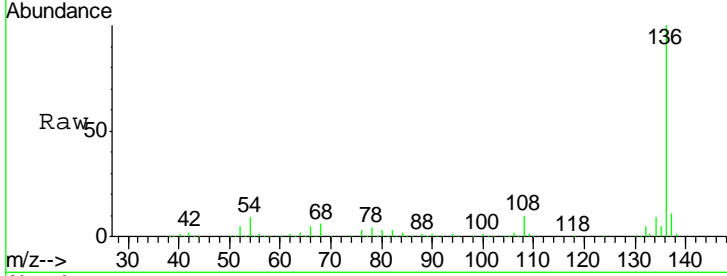




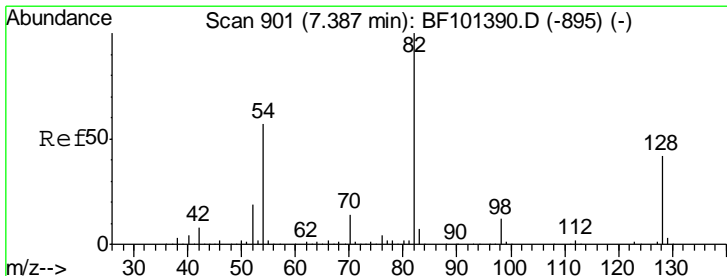
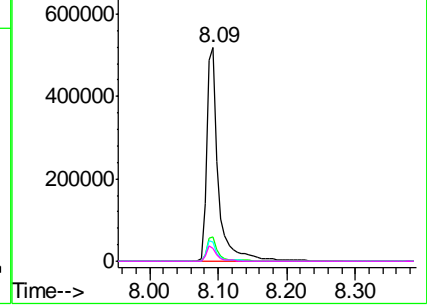
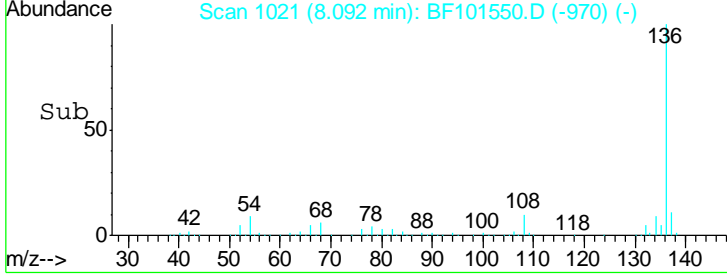
#21  
 Naphthalene-d8  
 Concen: 20.000 ng  
 RT: 8.09 min Scan# 1021  
 Delta R.T. -0.00 min  
 Lab File: BF101550.D  
 Acq: 20 Dec 2017 4:57

Instrument :  
 BNA\_F  
 ClientSampleId :  
 121417--DBRI-E-U-M

Tgt Ion	Resp	Lower	Upper
136	100		
137	11.3	8.9	13.3
54	8.8	6.6	9.8
68	6.2	5.0	7.4

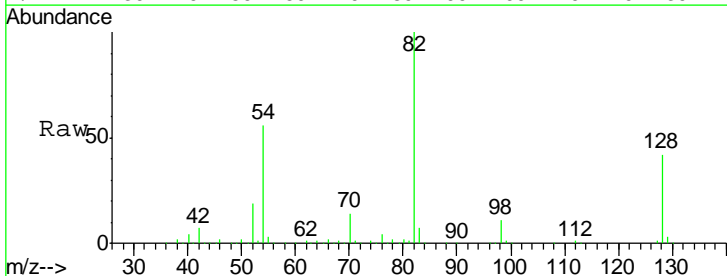


Abundance Ion 136.00 (135.70 to 136.70): E  
 Ion 137.00 (136.70 to 137.70): E  
 Ion 54.00 (53.70 to 54.70): BF1  
 Ion 68.00 (67.70 to 68.70): BF1

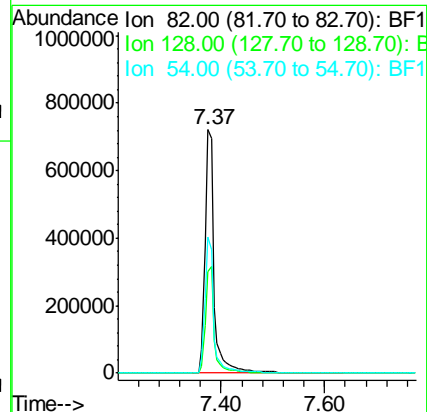
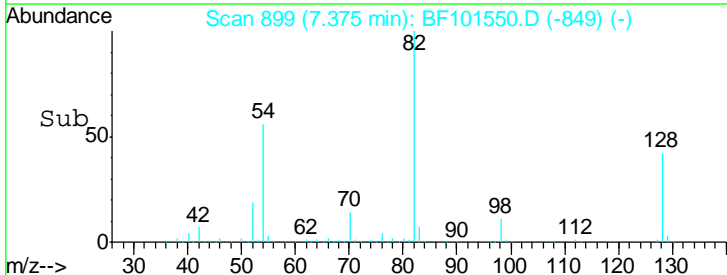


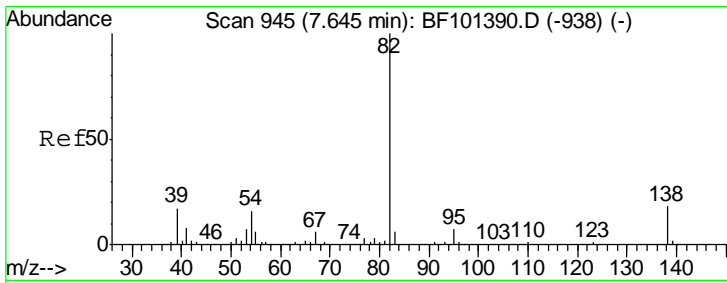
#23  
 Nitrobenzene-d5  
 Concen: 77.206 ng  
 RT: 7.37 min Scan# 899  
 Delta R.T. -0.01 min  
 Lab File: BF101550.D  
 Acq: 20 Dec 2017 4:57

Tgt Ion	Resp	Lower	Upper
82	100		
128	41.5	36.1	54.1
54	56.0	41.4	62.2



Abundance Ion 82.00 (81.70 to 82.70): BF1  
 Ion 128.00 (127.70 to 128.70): E  
 Ion 54.00 (53.70 to 54.70): BF1

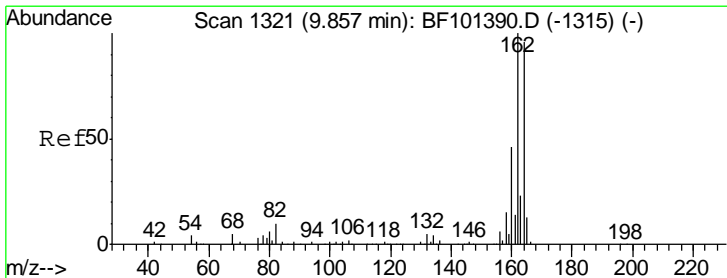
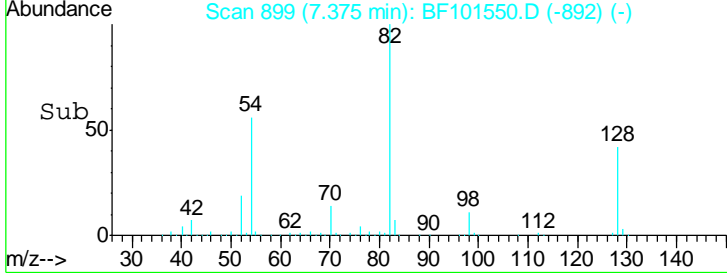
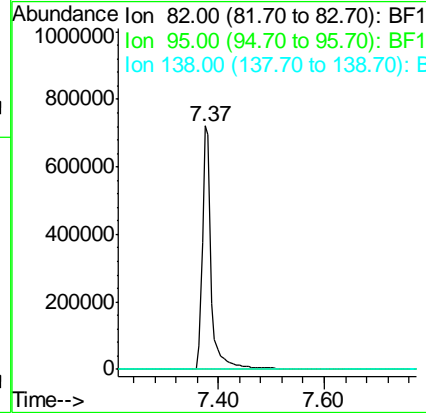
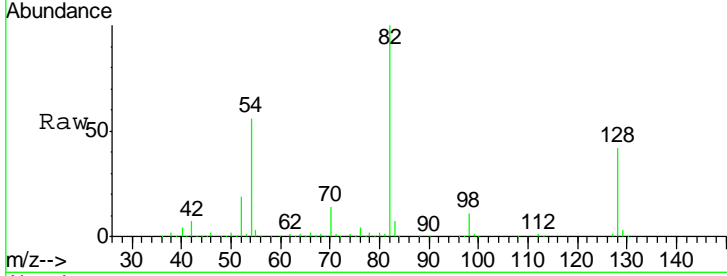




#25  
 Isophorone  
 Concen: 38.486 ng  
 RT: 7.37 min Scan# 899  
 Delta R.T. -0.26 min  
 Lab File: BF101550.D  
 Acq: 20 Dec 2017 4:57

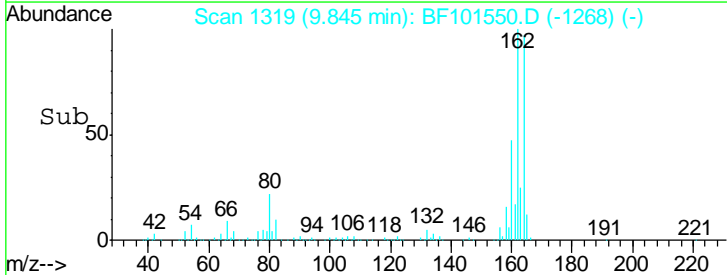
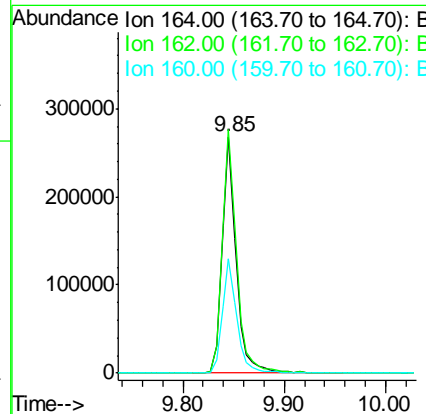
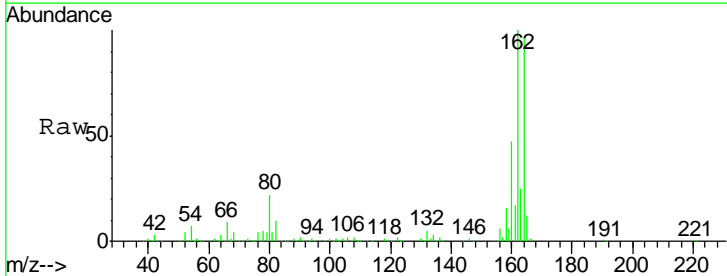
**Instrument :**  
 BNA\_F  
**ClientSampleId :**  
 121417--DBRI-E-U-M

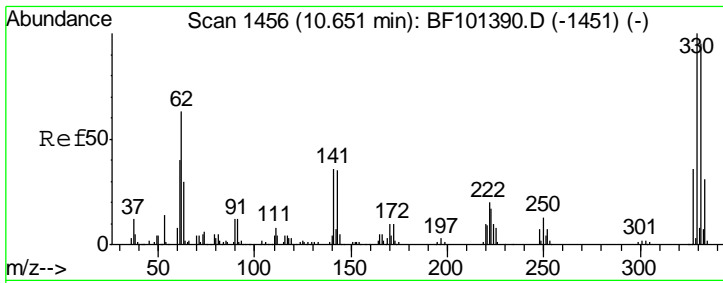
Tgt Ion	Resp	Lower	Upper
82	100		
95	0.0	5.2	7.8#
138	0.0	14.9	22.3#



#38  
 Acenaphthene-d10  
 Concen: 20.000 ng  
 RT: 9.85 min Scan# 1319  
 Delta R.T. -0.00 min  
 Lab File: BF101550.D  
 Acq: 20 Dec 2017 4:57

Tgt Ion	Resp	Lower	Upper
164	100		
162	103.2	86.1	129.1
160	48.6	38.3	57.5

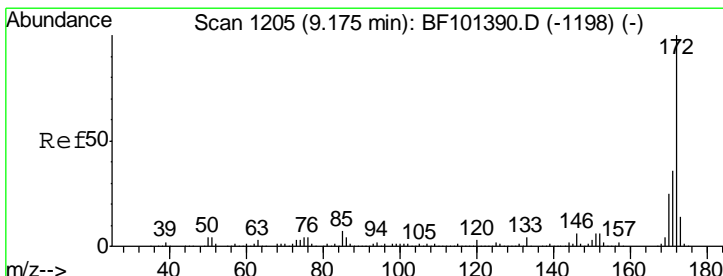
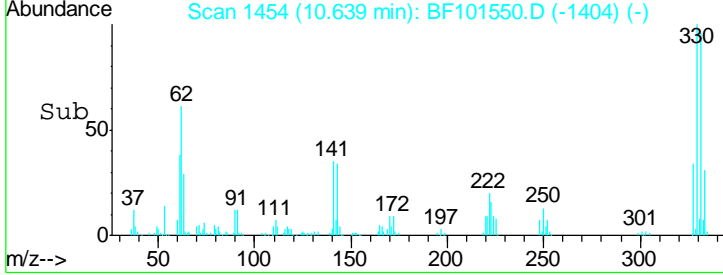
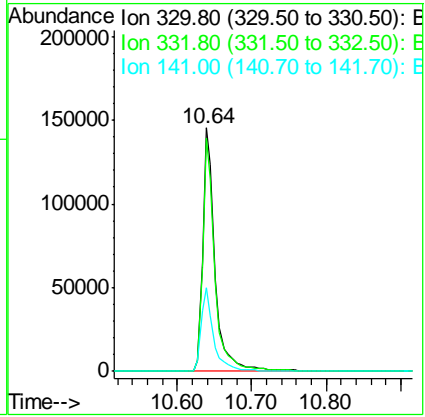
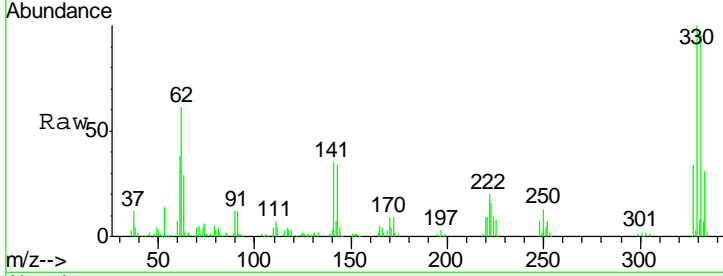




#41  
 2,4,6-Tribromophenol  
 Concen: 67.822 ng  
 RT: 10.64 min Scan# 1454  
 Delta R.T. -0.01 min  
 Lab File: BF101550.D  
 Acq: 20 Dec 2017 4:57

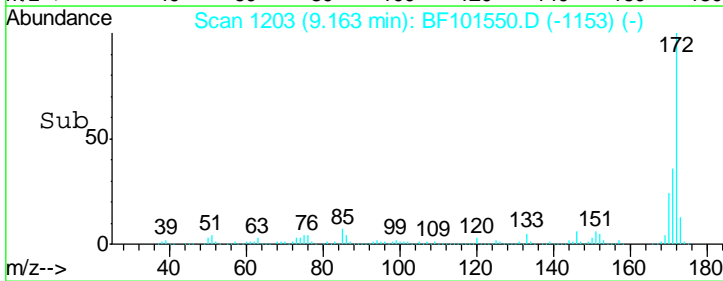
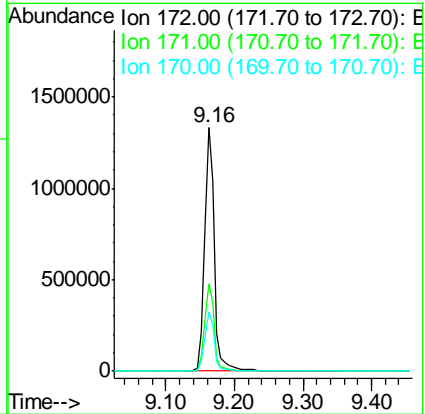
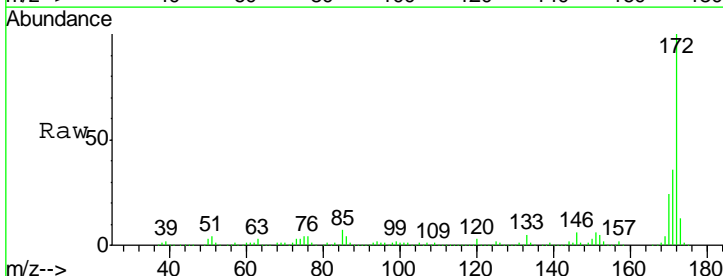
Instrument :  
 BNA\_F  
 ClientSampleId :  
 121417--DBRI-E-U-M

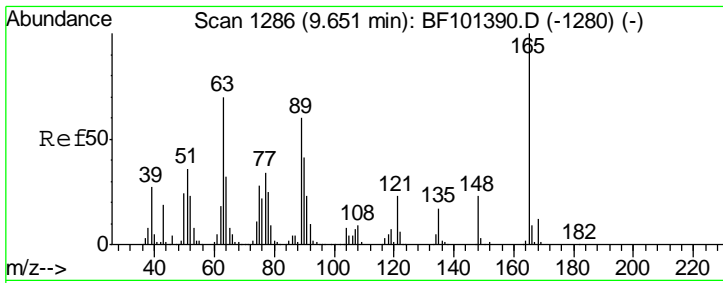
Tgt Ion	Resp	Lower	Upper
330	169690		
332	94.6	77.0	115.6
141	35.1	29.9	44.9



#44  
 2-Fluorobiphenyl  
 Concen: 81.706 ng  
 RT: 9.16 min Scan# 1203  
 Delta R.T. -0.01 min  
 Lab File: BF101550.D  
 Acq: 20 Dec 2017 4:57

Tgt Ion	Resp	Lower	Upper
172	1367645		
171	36.0	29.7	44.5
170	24.2	19.6	29.4

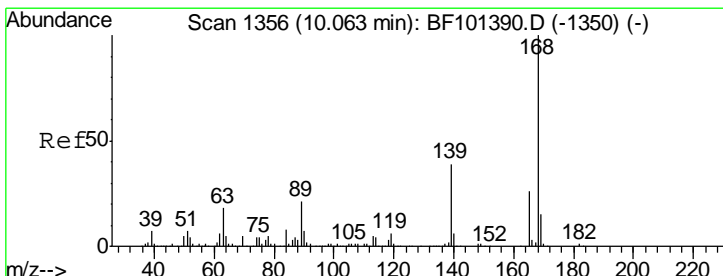
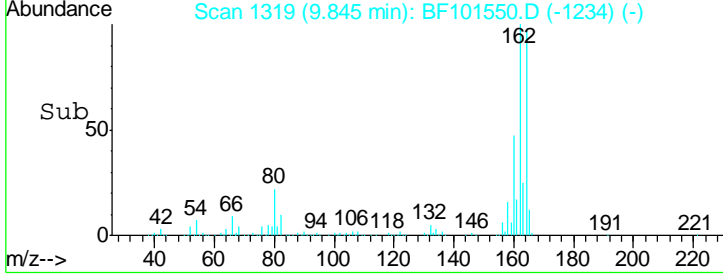
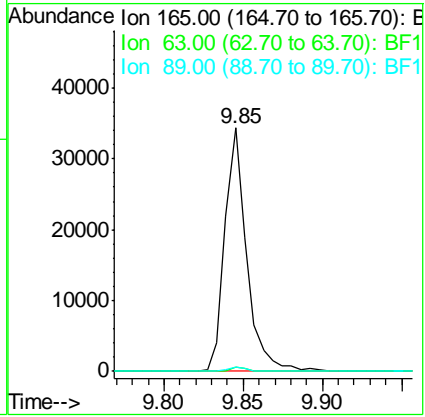
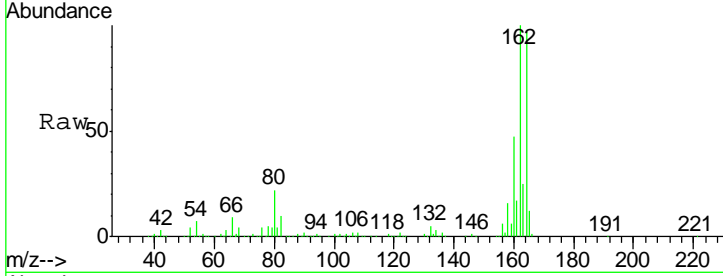




#50  
 2,6-Dinitrotoluene  
 Concen: 7.763 ng  
 RT: 9.85 min Scan# 1319  
 Delta R.T. 0.20 min  
 Lab File: BF101550.D  
 Acq: 20 Dec 2017 4:57

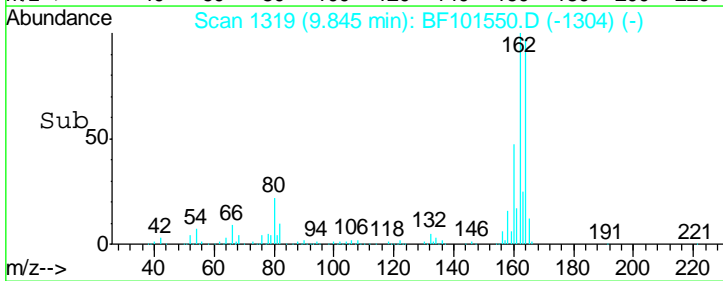
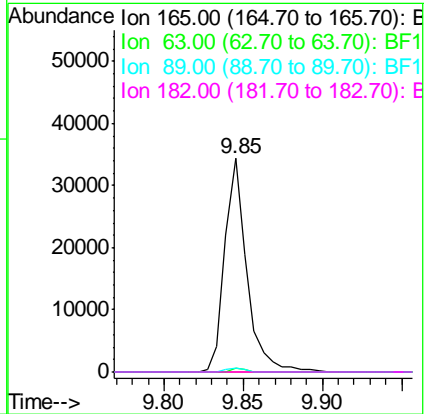
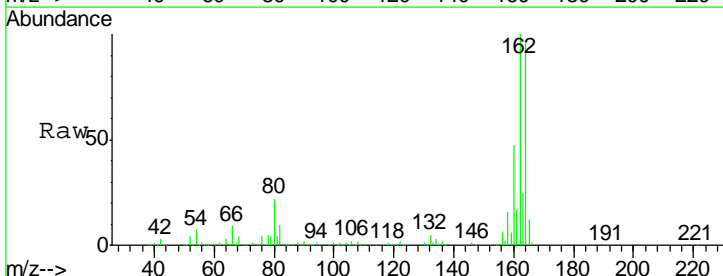
**Instrument :**  
 BNA\_F  
**ClientSampled :**  
 121417--DBRI-E-U-M

Tgt Ion	Resp	Lower	Upper
165	100		
63	1.6	44.7	67.1#
89	1.7	44.0	66.0#

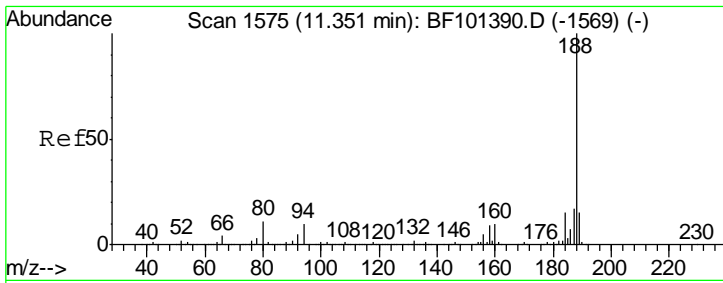


#56  
 2,4-Dinitrotoluene  
 Concen: 6.890 ng  
 RT: 9.85 min Scan# 1319  
 Delta R.T. -0.21 min  
 Lab File: BF101550.D  
 Acq: 20 Dec 2017 4:57

Tgt Ion	Resp	Lower	Upper
165	100		
63	1.6	36.4	54.6#
89	1.7	57.8	86.6#
182	0.0	1.6	2.4#



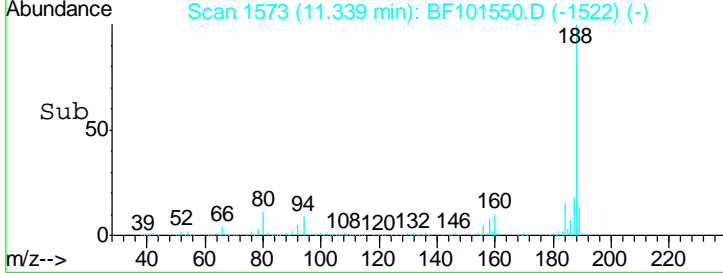
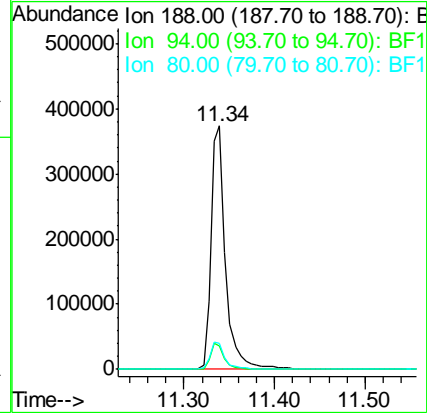
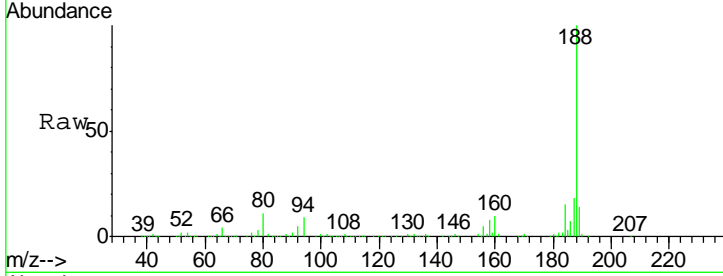




#63  
 Phenanthrene-d10  
 Concen: 20.000 ng  
 RT: 11.34 min Scan# 1573  
 Delta R.T. -0.00 min  
 Lab File: BF101550.D  
 Acq: 20 Dec 2017 4:57

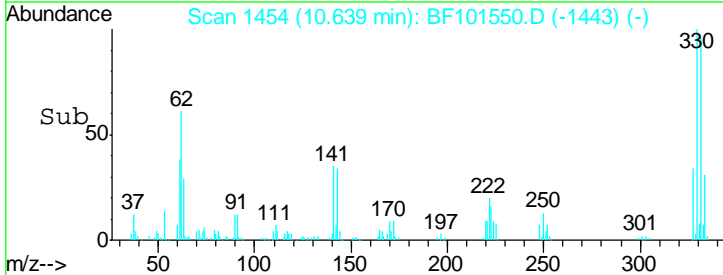
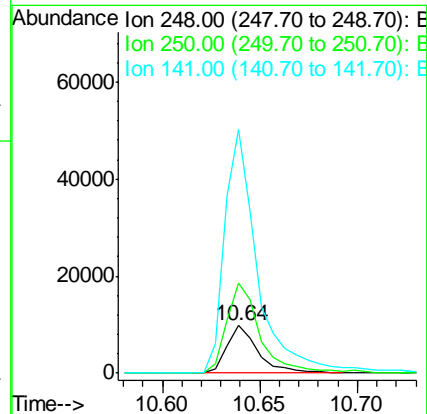
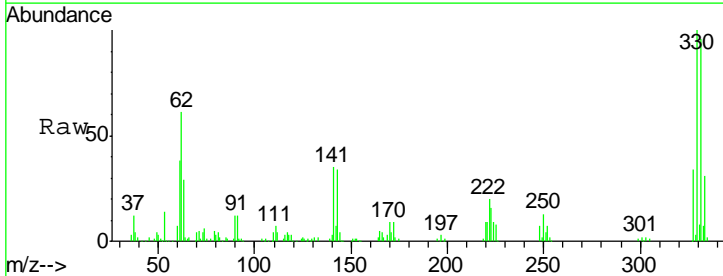
Instrument :  
 BNA\_F  
 ClientSampleId :  
 121417--DBRI-E-U-M

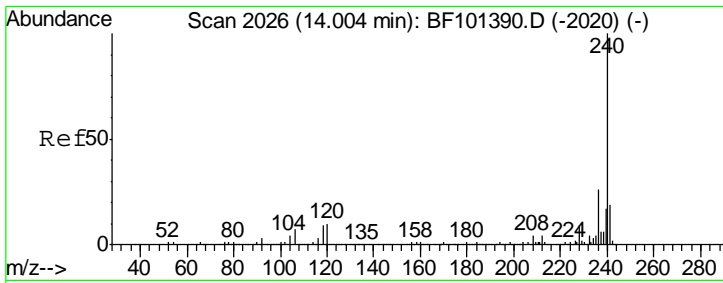
Tgt Ion	Resp	Lower	Upper
188	100		
94	9.5	8.5	12.7
80	10.6	9.2	13.8



#66  
 4-Bromophenyl-phenylether  
 Concen: 2.271 ng  
 RT: 10.64 min Scan# 1454  
 Delta R.T. -0.24 min  
 Lab File: BF101550.D  
 Acq: 20 Dec 2017 4:57

Tgt Ion	Resp	Lower	Upper
248	100		
250	189.6	76.9	115.3#
141	514.7	74.4	111.6#

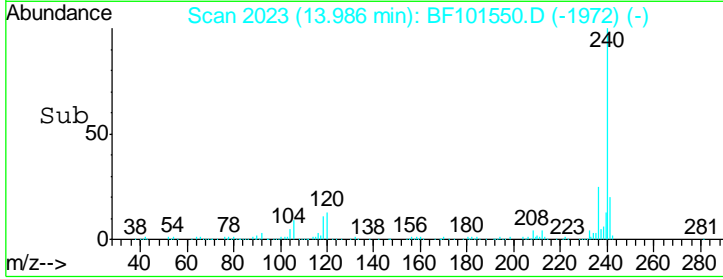
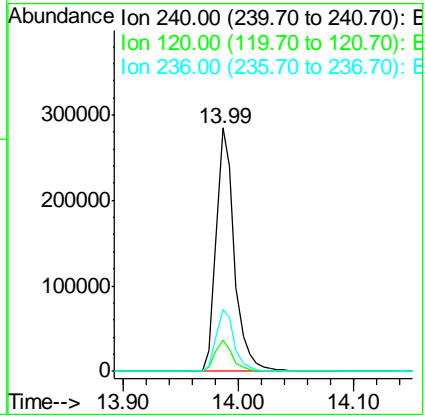
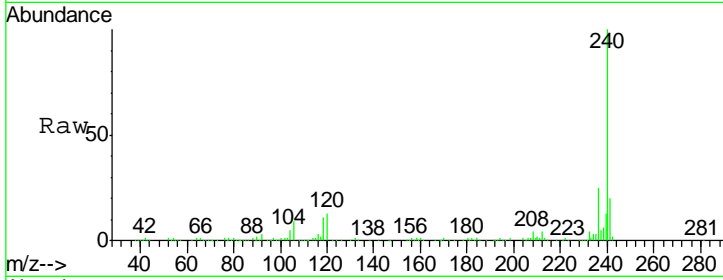




#75  
 Chrysene-d12  
 Concen: 20.000 ng  
 RT: 13.99 min Scan# 2023  
 Delta R.T. -0.00 min  
 Lab File: BF101550.D  
 Acq: 20 Dec 2017 4:57

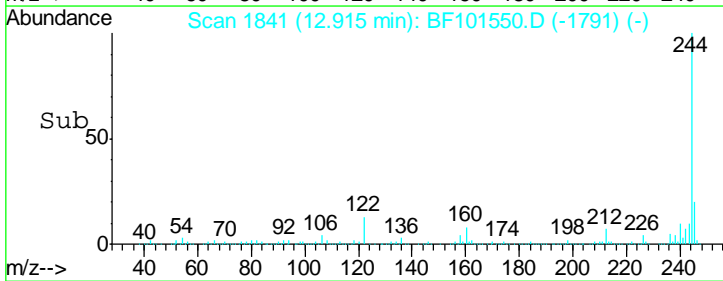
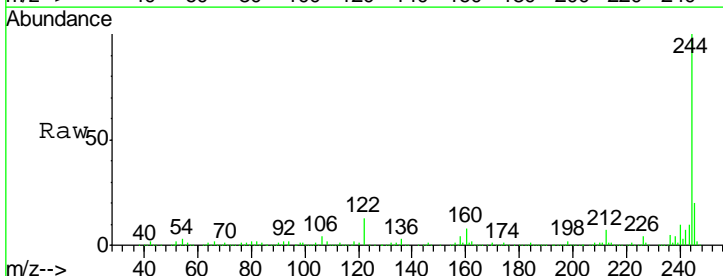
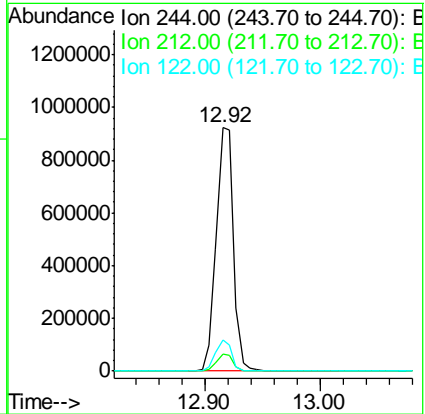
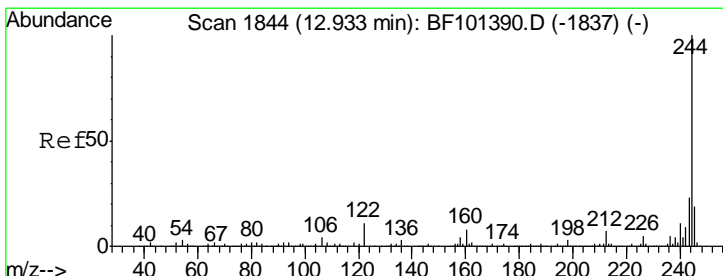
**Instrument :**  
 BNA\_F  
**Client Sampled :**  
 121417--DBRI-E-U-M

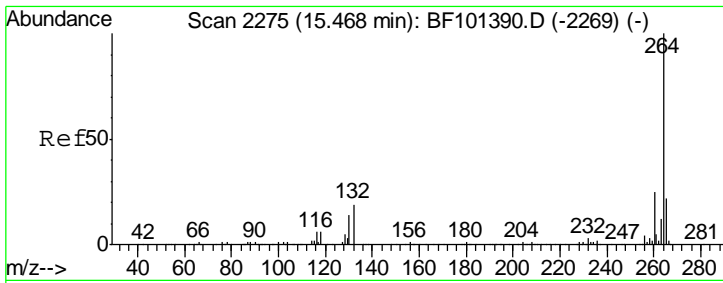
Tgt Ion	Resp	Lower	Upper
240	311003		
120	12.7	9.5	14.3
236	25.3	20.7	31.1



#78  
 Terphenyl-d14  
 Concen: 74.011 ng  
 RT: 12.92 min Scan# 1841  
 Delta R.T. -0.01 min  
 Lab File: BF101550.D  
 Acq: 20 Dec 2017 4:57

Tgt Ion	Resp	Lower	Upper
244	954783		
212	7.2	5.4	8.0
122	12.7	11.0	16.4





#86  
 Perylene-d12  
 Concen: 20.000 ng  
 RT: 15.46 min Scan# 2273  
 Delta R.T. 0.01 min  
 Lab File: BF101550.D  
 Acq: 20 Dec 2017 4:57

**Instrument :**  
 BNA\_F  
**ClientSampled :**  
 121417--DBRI-E-U-M

Tot Ion	Ion	Resp	Lower	Upper
339755	264	100		
	260	23.3	19.2	28.8
	265	21.1	17.5	26.3

