

Data Path : Z:\svoasrv\HPCHEM1\BNA_F\Data\BF121924\
 Data File : BF140919.D
 Acq On : 19 Dec 2024 12:04
 Operator : RC/JU
 Sample : PB165719BL
 Misc :
 ALS Vial : 3 Sample Multiplier: 1

Instrument :
 BNA_F
 ClientSampleId :
 PB165719BL

Integration Parameters: rteint.p
 Integrator: RTE
 Smoothing : ON Filtering: 5
 Sampling : 1 Min Area: 3 % of largest Peak
 Start Thrs: 0.2 Max Peaks: 100
 Stop Thrs : 0 Peak Location: TOP

If leading or trailing edge < 100 prefer < Baseline drop else tangent >
 Peak separation: 5

Method : Z:\svoasrv\HPCHEM1\BNA_F\Methods\8270-BF121624.M
 Title : ASP BNA STANDARDS FOR 5 POINT CALIBRATION

Signal : TIC: BF140919.D\data.ms

peak #	R.T. min	first scan	max scan	last scan	PK TY	peak height	corr. area	corr. % max.	% of total
1	2.187	7	16	26	rVB	56769	108335	3.10%	0.605%
2	5.499	573	579	607	rBV	1617757	2295689	65.79%	12.817%
3	6.498	744	749	771	rBV	1609976	2338313	67.01%	13.055%
4	6.846	803	808	823	rVB	314093	398449	11.42%	2.225%
5	7.416	898	905	926	rBV	1053425	1519034	43.53%	8.481%
6	8.128	1020	1026	1056	rBV	367806	497227	14.25%	2.776%
7	9.198	1202	1208	1230	rBV	2206157	3083538	88.36%	17.216%
8	9.881	1319	1324	1343	rVB	463356	613198	17.57%	3.424%
9	10.681	1454	1460	1497	rBV	1321632	1856859	53.21%	10.367%
10	11.375	1573	1578	1594	rBV	556639	729397	20.90%	4.072%
11	12.963	1841	1848	1853	rBV	2585742	3489593	100.00%	19.483%
12	14.027	2024	2029	2041	rBV	378985	536943	15.39%	2.998%
13	15.527	2278	2284	2303	rVB	237657	444438	12.74%	2.481%

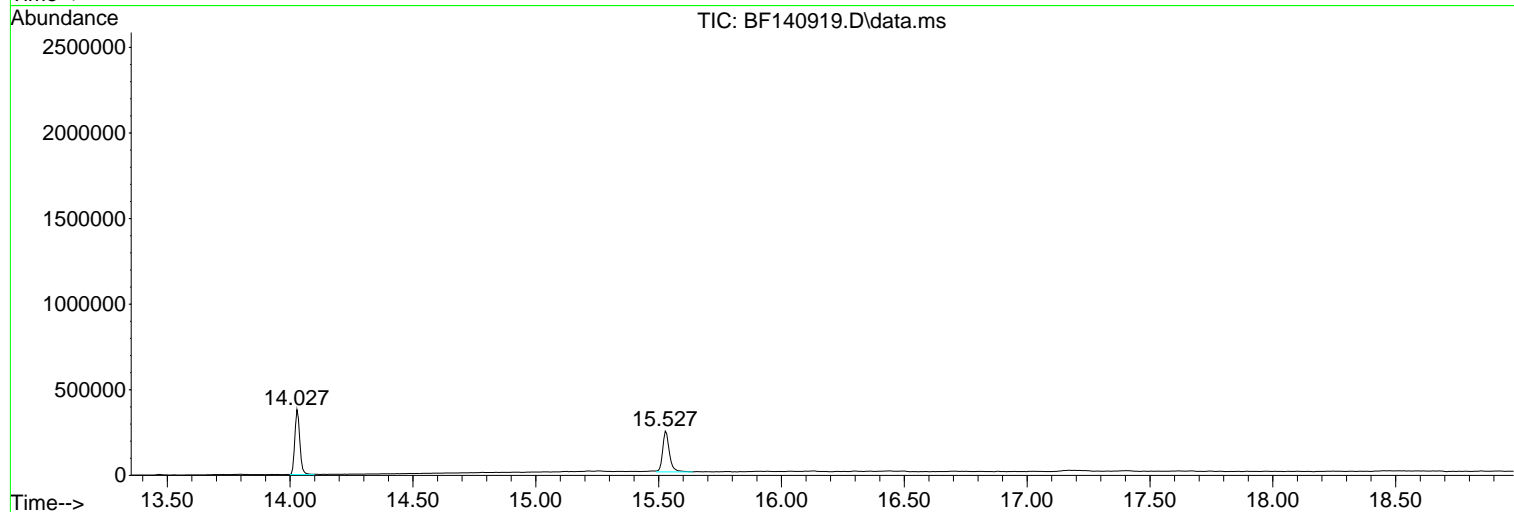
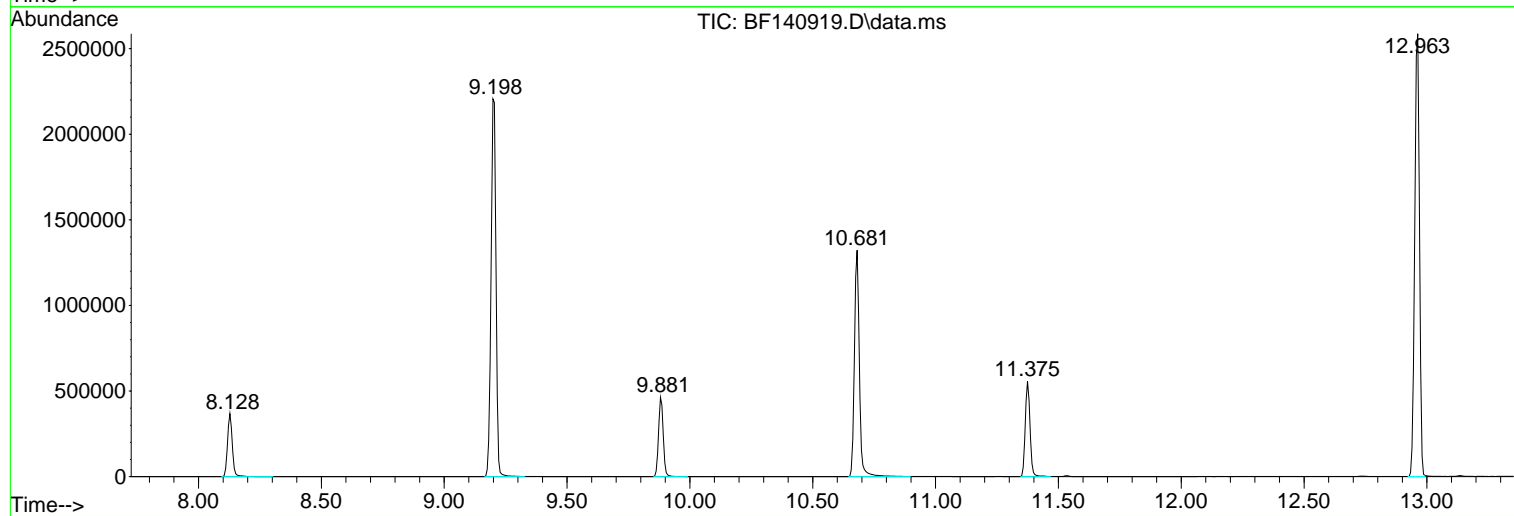
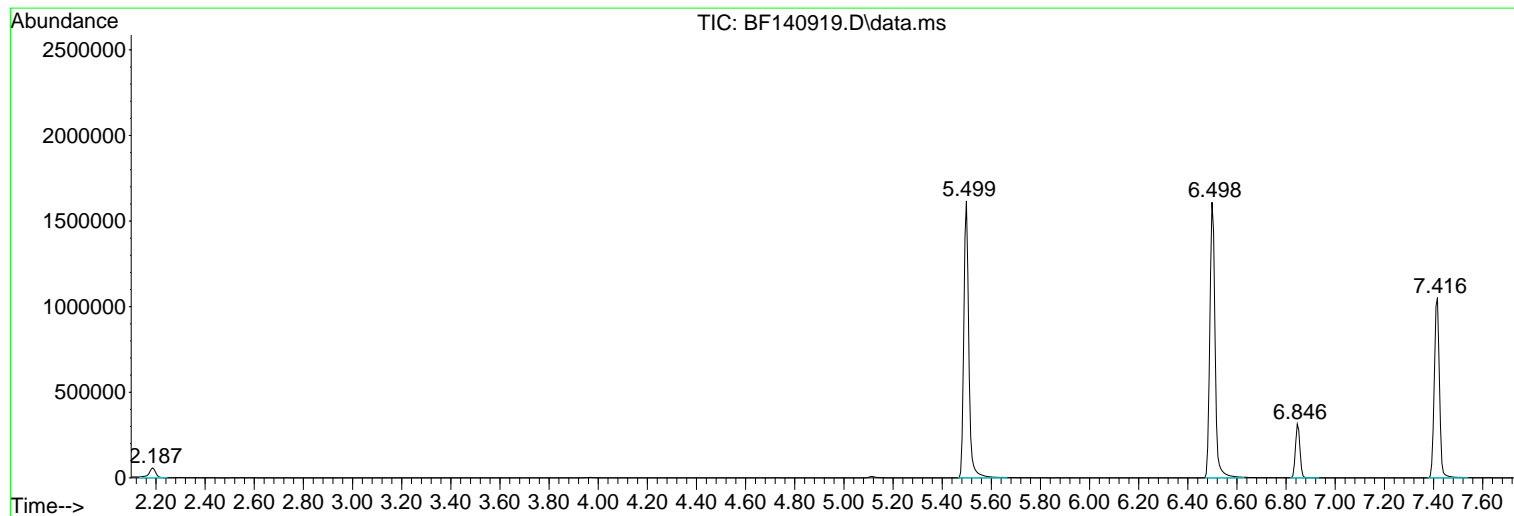
Sum of corrected areas: 17911013

Data Path : Z:\svoasrv\HPCHEM1\BNA_F\Data\BF121924\
Data File : BF140919.D
Acq On : 19 Dec 2024 12:04
Operator : RC/JU
Sample : PB165719BL
Misc :
ALS Vial : 3 Sample Multiplier: 1

Instrument :
BNA_F
ClientSampleId :
PB165719BL

Quant Method : Z:\svoasrv\HPCHEM1\BNA_F\Methods\8270-BF121624.M
Quant Title : ASP BNA STANDARDS FOR 5 POINT CALIBRATION

TIC Library : C:\Database\NIST20.L
TIC Integration Parameters: LSCINT.P



Data Path : Z:\svoasrv\HPCHEM1\BNA_F\Data\BF121924\
 Data File : BF140919.D
 Acq On : 19 Dec 2024 12:04
 Operator : RC/JU
 Sample : PB165719BL
 Misc :
 ALS Vial : 3 Sample Multiplier: 1

Instrument :
 BNA_F
 ClientSampleId :
 PB165719BL

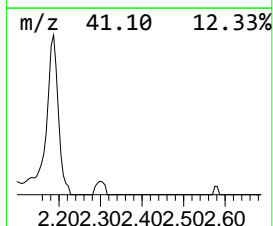
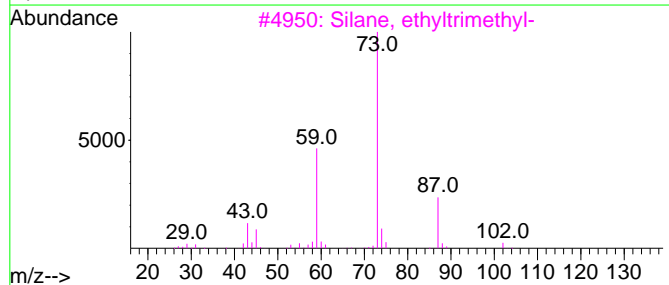
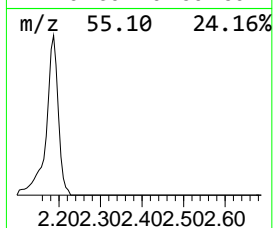
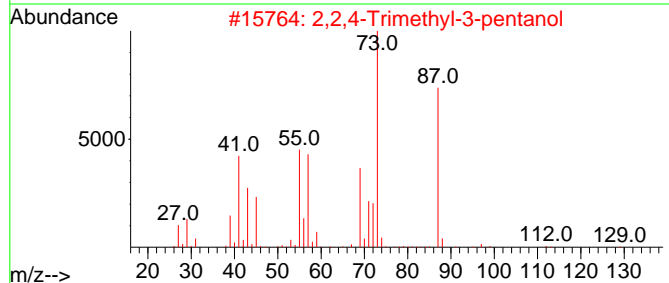
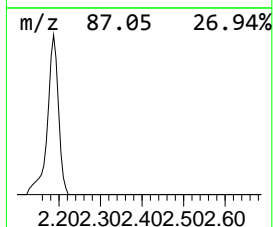
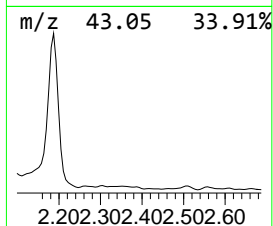
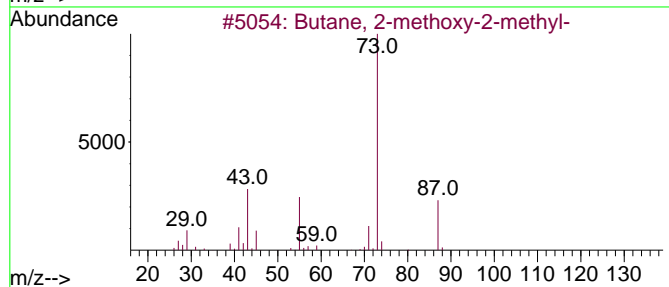
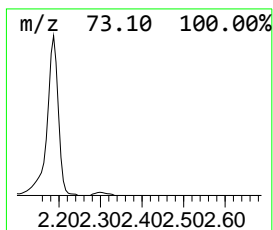
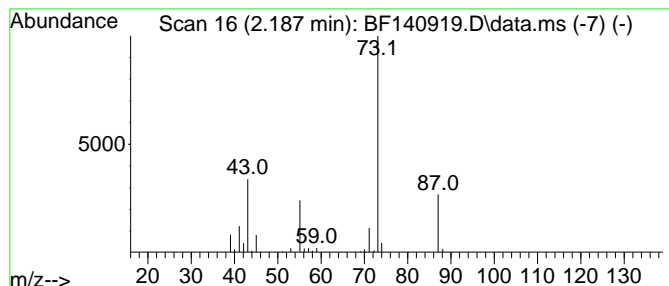
Quant Method : Z:\svoasrv\HPCHEM1\BNA_F\Methods\8270-BF121624.M
 Quant Title : ASP BNA STANDARDS FOR 5 POINT CALIBRATION

TIC Library : C:\Database\NIST20.L
 TIC Integration Parameters: LSCINT.P

 Peak Number 1 Butane, 2-methoxy-2-methyl- Concentration Rank 1

R.T.	EstConc	Area	Relative to ISTD	R.T.
2.187	5.44 ng	108335	1,4-Dichlorobenzene-d4	6.846

Hit#	of 5	Tentative ID	MW	MolForm	CAS#	Qual
1		Butane, 2-methoxy-2-methyl-	102	C6H14O	000994-05-8	86
2		2,2,4-Trimethyl-3-pentanol	130	C8H18O	005162-48-1	39
3		Silane, ethyltrimethyl-	102	C5H14Si	003439-38-1	33
4		Pentane, 3-methoxy-	102	C6H14O	036839-67-5	23
5		Acetamide, N-ethyl-	87	C4H9NO	000625-50-3	12



Data Path : Z:\svoasrv\HPCHEM1\BNA_F\Data\BF121924\
Data File : BF140919.D
Acq On : 19 Dec 2024 12:04
Operator : RC/JU
Sample : PB165719BL
Misc :
ALS Vial : 3 Sample Multiplier: 1

Instrument :
BNA_F
ClientSampleId :
PB165719BL

Quant Method : Z:\svoasrv\HPCHEM1\BNA_F\Methods\8270-BF121624.M
Quant Title : ASP BNA STANDARDS FOR 5 POINT CALIBRATION

TIC Library : C:\Database\NIST20.L
TIC Integration Parameters: LSCINT.P

TIC Top Hit name	RT	EstConc	Units	Response	--Internal Standard--			
					#	RT	Resp	Conc
Butane, 2-metho...	2.187	5.4	ng	108335	1	6.846	398449	20.0