

Data Path : Z:\svoasrv\HPCHEM1\BNA_F\Data\BF121924\
 Data File : BF140928.D
 Acq On : 19 Dec 2024 16:05
 Operator : RC/JU
 Sample : P5291-05
 Misc :
 ALS Vial : 12 Sample Multiplier: 1

Instrument :
 BNA_F
 ClientSampleId :
 MW2-20241213

Integration Parameters: rteint.p
 Integrator: RTE
 Smoothing : ON
 Sampling : 1
 Start Thrs : 0.2
 Stop Thrs : 0
 Filtering: 5
 Min Area: 3 % of largest Peak
 Max Peaks: 100
 Peak Location: TOP

If leading or trailing edge < 100 prefer < Baseline drop else tangent >
 Peak separation: 5

Method : Z:\svoasrv\HPCHEM1\BNA_F\Methods\8270-BF121624.M
 Title : ASP BNA STANDARDS FOR 5 POINT CALIBRATION

Signal : TIC: BF140928.D\data.ms

peak #	R.T. min	first scan	max scan	last scan	PK TY	peak height	corr. area	corr. % max.	% of total
1	2.240	22	25	31	rVB2	24943	42353	1.17%	0.092%
2	2.487	49	67	76	rBV4	55749	173421	4.78%	0.375%
3	2.699	96	103	111	rVB3	34893	86227	2.38%	0.186%
4	2.922	132	141	144	rBV5	16123	40616	1.12%	0.088%
5	2.963	144	148	158	rVB2	30232	64586	1.78%	0.140%
6	3.187	175	186	200	rVB4	14038	56086	1.55%	0.121%
7	3.316	200	208	211	rBV2	25460	53468	1.47%	0.116%
8	3.534	233	245	249	rBV4	22767	64495	1.78%	0.139%
9	3.593	249	255	262	rVV	53918	113175	3.12%	0.245%
10	3.675	263	269	279	rVV3	44106	90713	2.50%	0.196%
11	3.804	286	291	297	rBV3	21710	38345	1.06%	0.083%
12	3.916	305	310	314	rVB	33029	50811	1.40%	0.110%
13	3.969	314	319	324	rBV	65403	105685	2.91%	0.228%
14	4.163	347	352	357	rVB4	31558	56240	1.55%	0.122%
15	4.228	357	363	370	rVB5	16177	37438	1.03%	0.081%
16	4.310	370	377	380	rBV	27691	54106	1.49%	0.117%
17	4.445	395	400	404	rVB3	21815	38553	1.06%	0.083%
18	4.493	404	408	413	rBV2	40536	61908	1.71%	0.134%
19	4.598	420	426	437	rVB2	115630	201349	5.55%	0.435%
20	4.845	461	468	471	rBV3	33231	60505	1.67%	0.131%
21	4.981	489	491	499	rVB4	25725	57298	1.58%	0.124%
22	5.204	524	529	533	rVB3	21299	36749	1.01%	0.079%
23	5.334	545	551	558	rBV	2350260	3207618	88.37%	6.931%
24	5.457	563	572	576	rVV	2001784	3510434	96.72%	7.586%
25	5.492	576	578	594	rVB	482080	680815	18.76%	1.471%
26	5.698	609	613	616	rBV	42154	59095	1.63%	0.128%
27	5.863	629	641	645	rBV6	15527	45937	1.27%	0.099%
28	6.016	658	667	673	rBV	331539	455550	12.55%	0.984%
29	6.304	711	716	723	rVB	669735	842490	23.21%	1.821%
30	6.369	723	727	729	rBV	86170	108298	2.98%	0.234%
31	6.404	729	733	736	rVV	767015	958582	26.41%	2.071%
32	6.445	736	740	745	rVV	803478	1017847	28.04%	2.199%
33	6.504	745	750	751	rVV	305716	353468	9.74%	0.764%
34	6.534	751	755	769	rVB	800794	1136941	31.32%	2.457%
35	6.675	770	779	784	rBV	2343419	3109966	85.68%	6.720%
36	6.792	793	799	804	rBV3	66508	135433	3.73%	0.293%

Data Path : Z:\svoasrv\HPCHEM1\BNA_F\Data\BF121924\
 Data File : BF140928.D
 Acq On : 19 Dec 2024 16:05
 Operator : RC/JU
 Sample : P5291-05
 Misc :
 ALS Vial : 12 Sample Multiplier: 1

Instrument :
 BNA_F
 ClientSampleId :
 MW2-20241213

Integration Parameters: rteint.p

Integrator: RTE
 Smoothing : ON Filtering: 5
 Sampling : 1 Min Area: 3 % of largest Peak
 Start Thrs: 0.2 Max Peaks: 100
 Stop Thrs : 0 Peak Location: TOP

If leading or trailing edge < 100 prefer < Baseline drop else tangent >
 Peak separation: 5

Method : Z:\svoasrv\HPCHEM1\BNA_F\Methods\8270-BF121624.M
 Title : ASP BNA STANDARDS FOR 5 POINT CALIBRATION

37	6.851	804	809	813	rBV	249760	352676	9.72%	0.762%
38	6.904	813	818	823	rVV	1016218	1323920	36.48%	2.861%
39	6.969	827	829	832	rVB	38576	37100	1.02%	0.080%
40	7.028	832	839	844	rBV	1950148	2498504	68.84%	5.399%
41	7.092	844	850	857	rVV2	408418	593659	16.36%	1.283%
42	7.163	857	862	870	rVB	491586	731737	20.16%	1.581%
43	7.234	870	874	882	rBV	226498	316304	8.71%	0.683%
44	7.310	882	887	894	rVB2	267794	515524	14.20%	1.114%
45	7.375	894	898	901	rBV	905889	1246735	34.35%	2.694%
46	7.416	901	905	913	rVV2	1382210	1972306	54.34%	4.262%
47	7.486	913	917	920	rVV4	45044	65444	1.80%	0.141%
48	7.528	920	924	931	rVB2	128781	184253	5.08%	0.398%
49	7.610	931	938	941	rBV	549727	771438	21.25%	1.667%
50	7.639	941	943	947	rVB	377147	379026	10.44%	0.819%
51	7.722	953	957	963	rBV3	32933	60728	1.67%	0.131%
52	7.798	963	970	976	rVB	588789	830167	22.87%	1.794%
53	7.863	976	981	987	rBV	1151314	1603282	44.17%	3.465%
54	7.916	987	990	996	rVV3	106837	266927	7.35%	0.577%
55	7.963	996	998	1001	rVV2	101047	122112	3.36%	0.264%
56	7.992	1001	1003	1008	rVB	68185	73901	2.04%	0.160%
57	8.151	1008	1030	1036	rBV2	1807541	3629582	100.00%	7.843%
58	8.204	1036	1039	1044	rVB2	170010	222385	6.13%	0.481%
59	8.322	1055	1059	1065	rBV6	30777	55050	1.52%	0.119%
60	8.398	1065	1072	1078	rBV3	125563	220036	6.06%	0.475%
61	8.510	1085	1091	1096	rVB	149977	215830	5.95%	0.466%
62	8.592	1096	1105	1108	rBV3	139829	270132	7.44%	0.584%
63	8.628	1109	1111	1117	rVB3	87828	131805	3.63%	0.285%
64	8.716	1122	1126	1135	rVB3	62820	128436	3.54%	0.278%
65	8.839	1142	1147	1152	rBV	544220	688253	18.96%	1.487%
66	8.939	1158	1164	1171	rVB	382157	500536	13.79%	1.082%
67	9.028	1171	1179	1183	rBV3	99122	179859	4.96%	0.389%
68	9.133	1191	1197	1201	rVV4	67415	117245	3.23%	0.253%
69	9.204	1203	1209	1214	rVB	1700969	2233772	61.54%	4.827%
70	9.310	1222	1227	1231	rBV2	62774	113607	3.13%	0.245%
71	9.463	1248	1253	1258	rBV3	54261	110811	3.05%	0.239%
72	9.516	1258	1262	1264	rBV3	30215	47508	1.31%	0.103%
73	9.657	1279	1286	1292	rVB8	24914	61748	1.70%	0.133%
74	9.716	1292	1296	1299	rBV2	30182	44148	1.22%	0.095%
75	9.880	1319	1324	1333	rVB	330532	422759	11.65%	0.914%
76	9.998	1340	1344	1352	rVB2	52642	81878	2.26%	0.177%

Data Path : Z:\svoasrv\HPCHEM1\BNA_F\Data\BF121924\
 Data File : BF140928.D
 Acq On : 19 Dec 2024 16:05
 Operator : RC/JU
 Sample : P5291-05
 Misc :
 ALS Vial : 12 Sample Multiplier: 1

Instrument :
 BNA_F
 ClientSampleId :
 MW2-20241213

Integration Parameters: rteint.p
 Integrator: RTE
 Smoothing : ON Filtering: 5
 Sampling : 1 Min Area: 3 % of largest Peak
 Start Thrs: 0.2 Max Peaks: 100
 Stop Thrs : 0 Peak Location: TOP

If leading or trailing edge < 100 prefer < Baseline drop else tangent >
 Peak separation: 5

Method : Z:\svoasrv\HPCHEM1\BNA_F\Methods\8270-BF121624.M
 Title : ASP BNA STANDARDS FOR 5 POINT CALIBRATION

77	10.169	1367	1373	1383	rBV2	182273	343957	9.48%	0.743%
78	10.598	1441	1446	1454	rBV	68460	104090	2.87%	0.225%
79	10.680	1454	1460	1465	rBV	999641	1340797	36.94%	2.897%
80	10.833	1479	1486	1495	rBV3	40554	90151	2.48%	0.195%
81	11.257	1554	1558	1565	rBV2	61953	111372	3.07%	0.241%
82	11.374	1573	1578	1586	rVB	369962	507203	13.97%	1.096%
83	11.616	1614	1619	1627	rVB	32143	51051	1.41%	0.110%
84	11.892	1661	1666	1679	rBV2	70446	136616	3.76%	0.295%
85	12.680	1795	1800	1809	rVB8	18882	37636	1.04%	0.081%
86	12.957	1841	1847	1852	rBV	1641463	2107105	58.05%	4.553%
87	13.845	1994	1998	2006	rBV3	22687	47160	1.30%	0.102%
88	14.027	2023	2029	2039	rBV	233250	334006	9.20%	0.722%
89	14.851	2165	2169	2174	rVB	29713	42147	1.16%	0.091%
90	15.515	2276	2282	2298	rVB	230469	396324	10.92%	0.856%

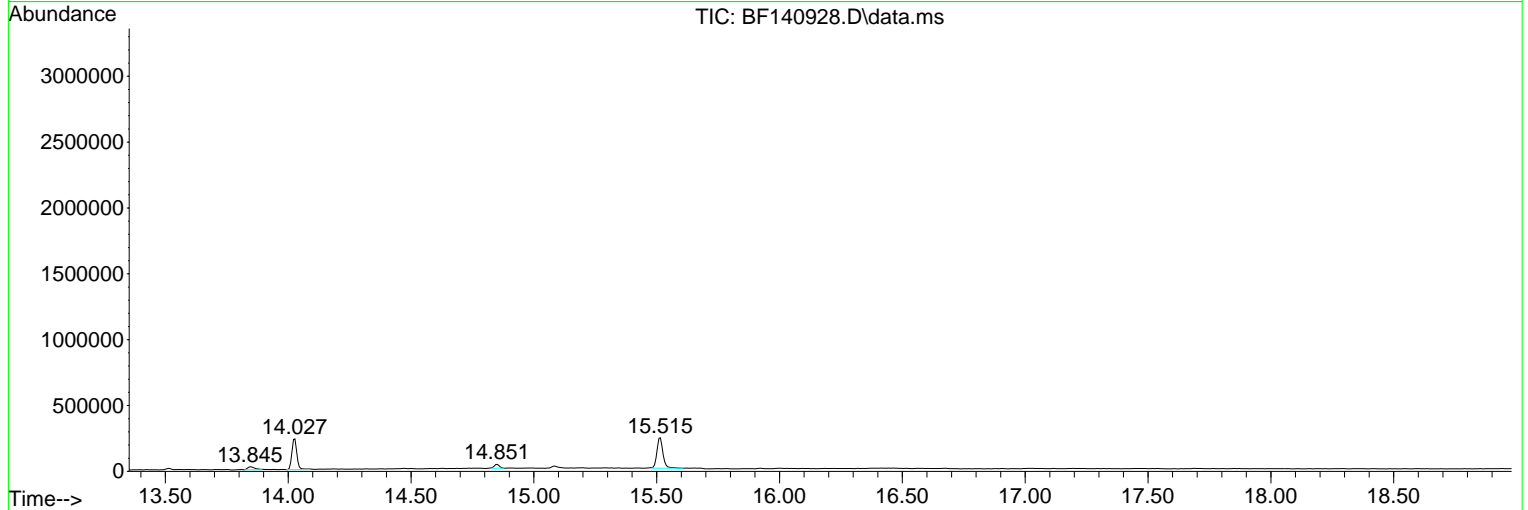
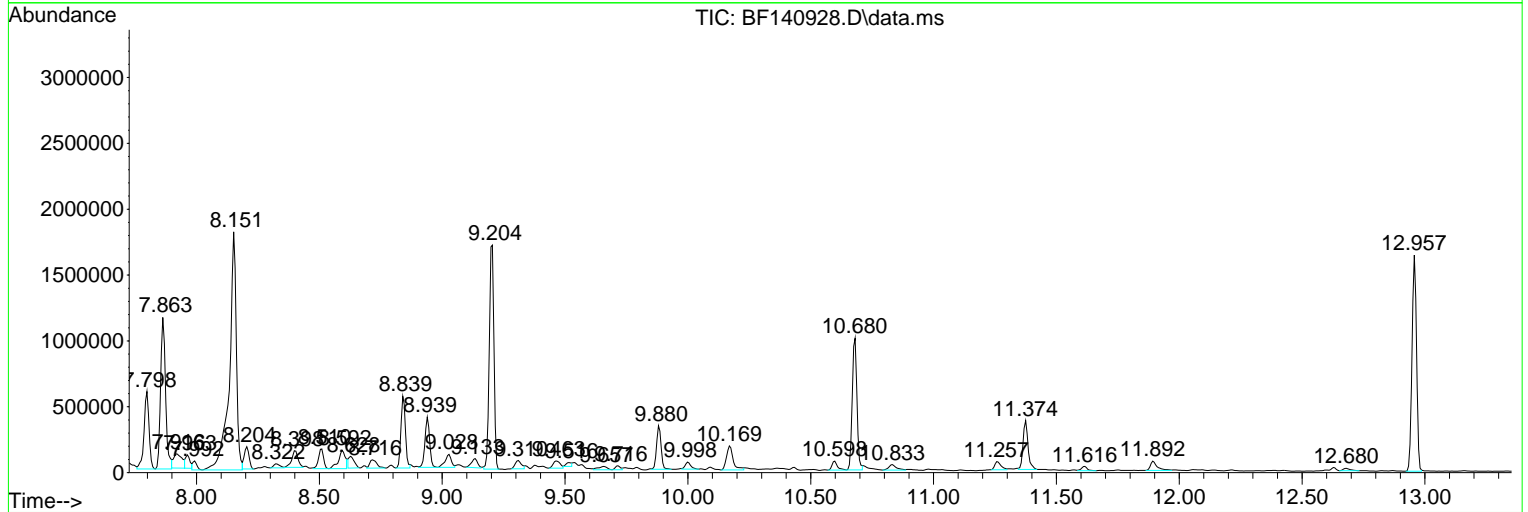
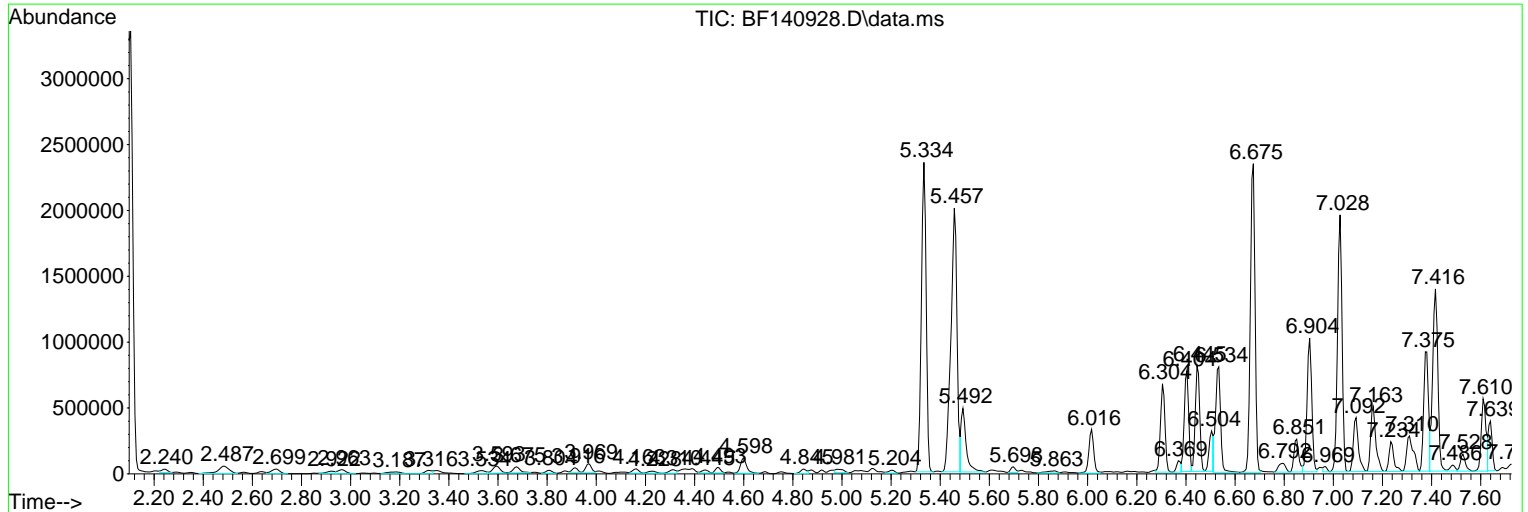
Sum of corrected areas: 46277339

Data Path : Z:\svoasrv\HPCHEM1\BNA_F\Data\BF121924\
 Data File : BF140928.D
 Acq On : 19 Dec 2024 16:05
 Operator : RC/JU
 Sample : P5291-05
 Misc :
 ALS Vial : 12 Sample Multiplier: 1

Instrument :
 BNA_F
ClientSampleId :
 MW2-20241213

Quant Method : Z:\svoasrv\HPCHEM1\BNA_F\Methods\8270-BF121624.M
 Quant Title : ASP BNA STANDARDS FOR 5 POINT CALIBRATION

TIC Library : C:\Database\NIST20.L
 TIC Integration Parameters: LSCINT.P



Data Path : Z:\svoasrv\HPCHEM1\BNA_F\Data\BF121924\
 Data File : BF140928.D
 Acq On : 19 Dec 2024 16:05
 Operator : RC/JU
 Sample : P5291-05
 Misc :
 ALS Vial : 12 Sample Multiplier: 1

Instrument :
 BNA_F
 ClientSampleId :
 MW2-20241213

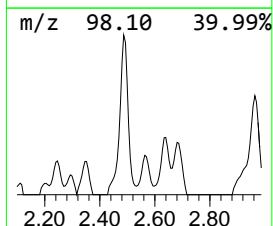
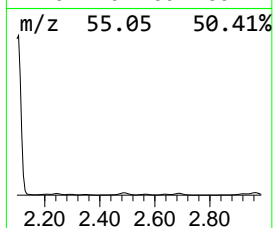
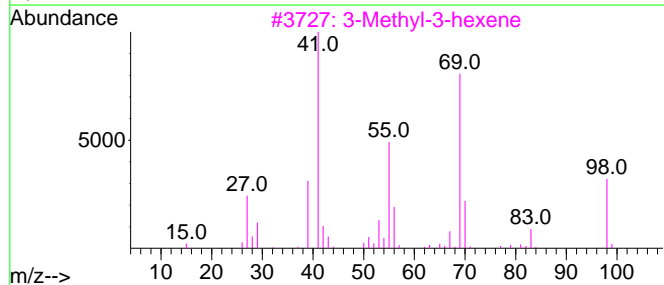
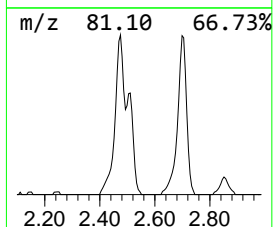
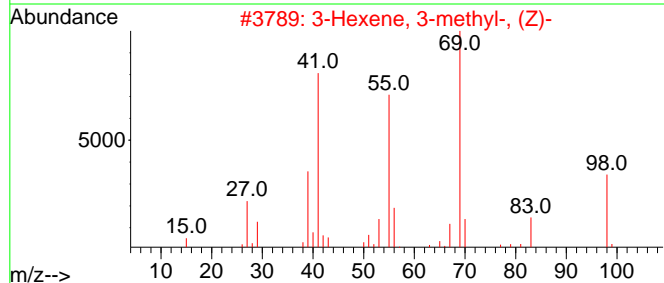
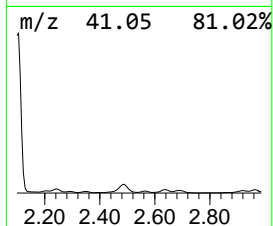
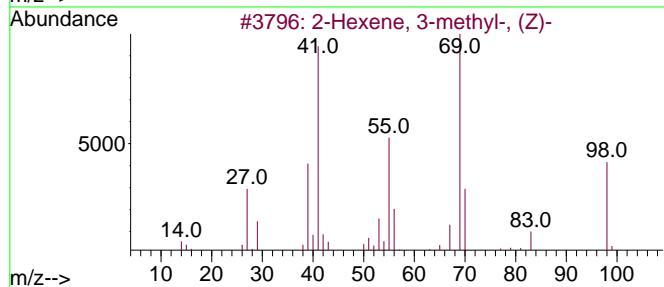
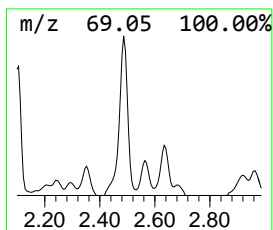
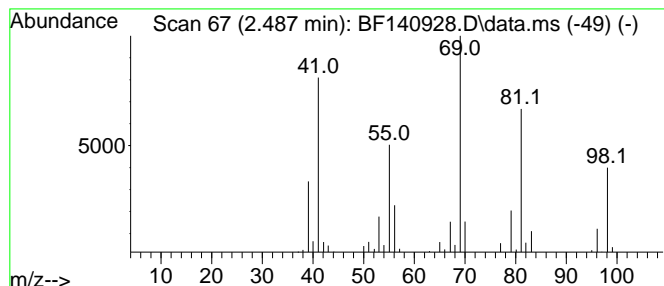
Quant Method : Z:\svoasrv\HPCHEM1\BNA_F\Methods\8270-BF121624.M
 Quant Title : ASP BNA STANDARDS FOR 5 POINT CALIBRATION

TIC Library : C:\Database\NIST20.L
 TIC Integration Parameters: LSCINT.P

 Peak Number 1 2-Hexene, 3-methyl-, (Z)- Concentration Rank 15

R.T.	EstConc	Area	Relative to ISTD	R.T.
2.487	9.83 ng	173421	1,4-Dichlorobenzene-d4	6.851

Hit#	of 5	Tentative ID	MW	MolForm	CAS#	Qual
1		2-Hexene, 3-methyl-, (Z)-	98	C7H14	010574-36-4	89
2		3-Hexene, 3-methyl-, (Z)-	98	C7H14	004914-89-0	76
3		3-Methyl-3-hexene	98	C7H14	003404-65-7	76
4		2-Hexene, 2-methyl-	98	C7H14	002738-19-4	72
5		Cyclopropane, 1,1-diethyl-	98	C7H14	001003-19-6	68



Data Path : Z:\svoasrv\HPCHEM1\BNA_F\Data\BF121924\
 Data File : BF140928.D
 Acq On : 19 Dec 2024 16:05
 Operator : RC/JU
 Sample : P5291-05
 Misc :
 ALS Vial : 12 Sample Multiplier: 1

Instrument :
 BNA_F
 ClientSampleId :
 MW2-20241213

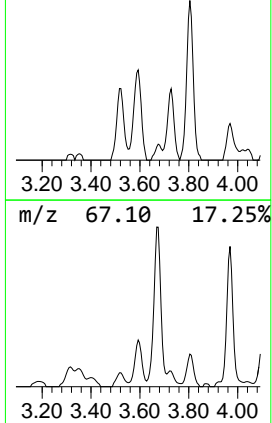
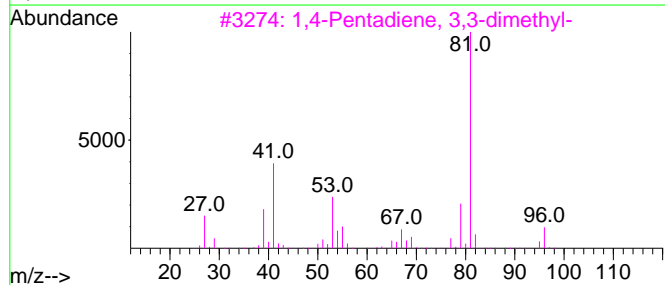
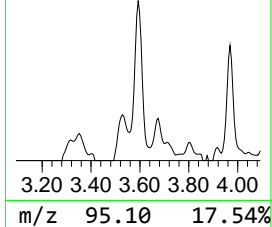
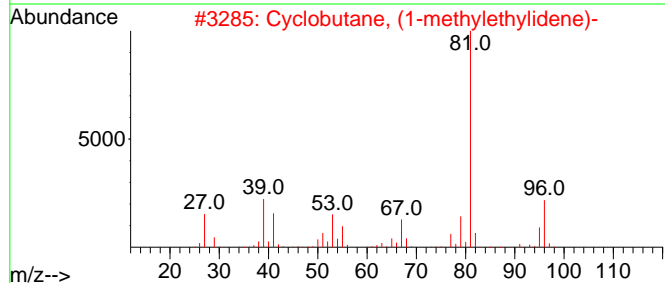
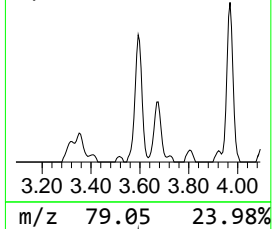
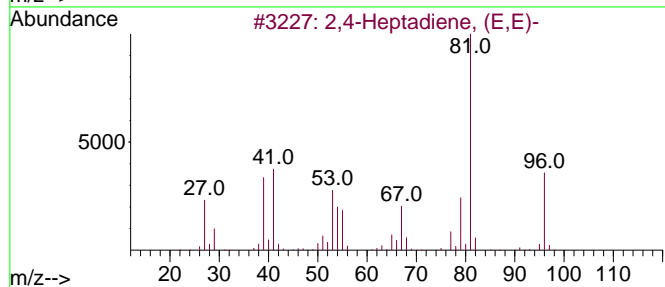
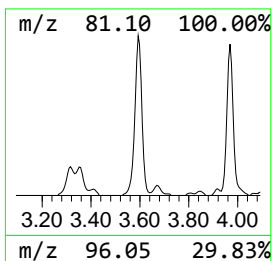
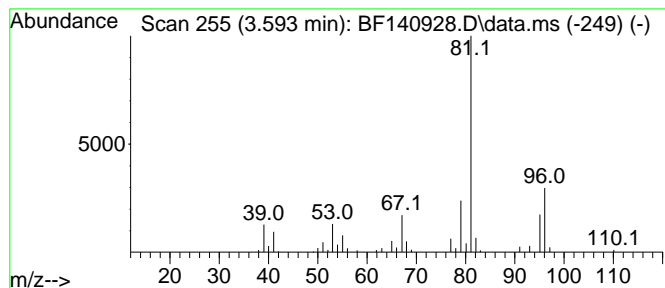
Quant Method : Z:\svoasrv\HPCHEM1\BNA_F\Methods\8270-BF121624.M
 Quant Title : ASP BNA STANDARDS FOR 5 POINT CALIBRATION

TIC Library : C:\Database\NIST20.L
 TIC Integration Parameters: LSCINT.P

 Peak Number 2 2,4-Heptadiene, (E,E)- Concentration Rank 19

R.T.	EstConc	Area	Relative to ISTD	R.T.
3.593	6.42 ng	113175	1,4-Dichlorobenzene-d4	6.851

Hit#	of 5	Tentative ID	MW	MolForm	CAS#	Qual
1		2,4-Heptadiene, (E,E)-	96	C7H12	002384-94-3	83
2		Cyclobutane, (1-methylethylidene)-	96	C7H12	001528-22-9	78
3		1,4-Pentadiene, 3,3-dimethyl-	96	C7H12	001112-35-2	72
4		3,5-Dimethylcyclopentene	96	C7H12	007459-71-4	72
5		2,4-Hexadiene, 2-methyl-	96	C7H12	028823-41-8	72



Data Path : Z:\svoasrv\HPCHEM1\BNA_F\Data\BF121924\
 Data File : BF140928.D
 Acq On : 19 Dec 2024 16:05
 Operator : RC/JU
 Sample : P5291-05
 Misc :
 ALS Vial : 12 Sample Multiplier: 1

Instrument :
 BNA_F
 ClientSampleId :
 MW2-20241213

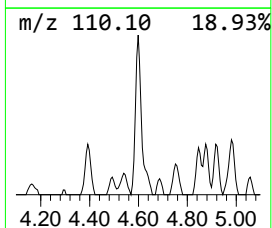
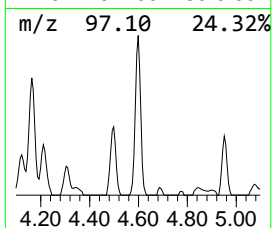
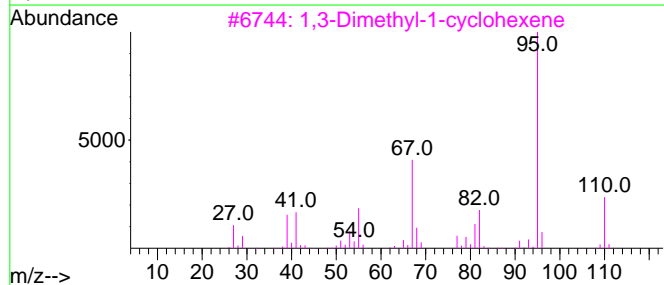
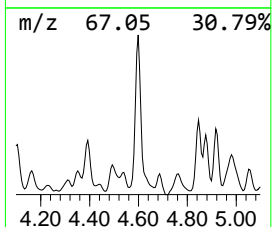
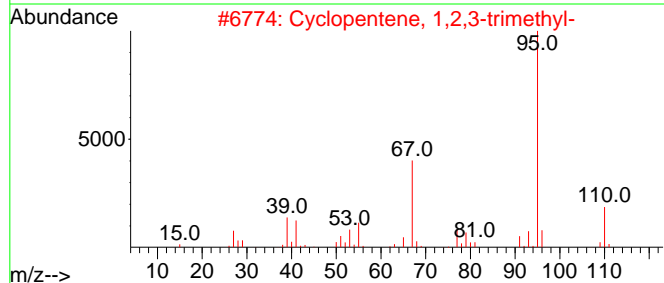
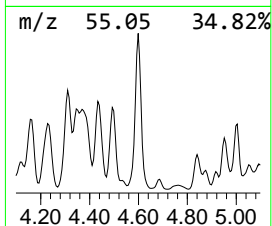
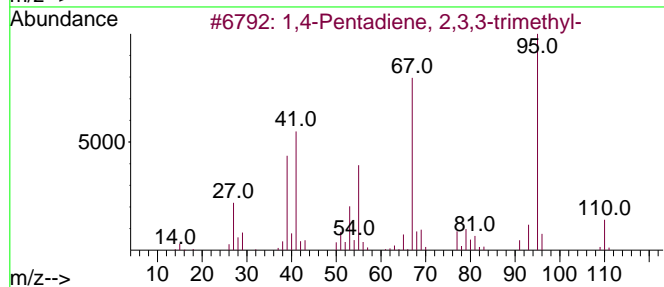
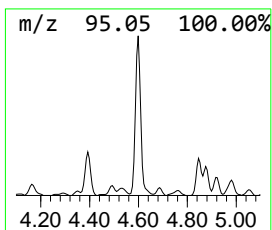
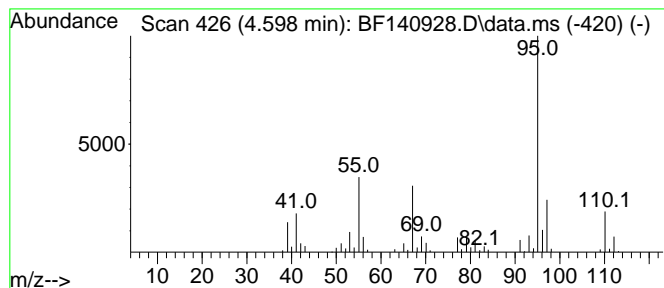
Quant Method : Z:\svoasrv\HPCHEM1\BNA_F\Methods\8270-BF121624.M
 Quant Title : ASP BNA STANDARDS FOR 5 POINT CALIBRATION

TIC Library : C:\Database\NIST20.L
 TIC Integration Parameters: LSCINT.P

 Peak Number 3 1,4-Pentadiene, 2,3,3-trime... Concentration Rank 14

R.T.	EstConc	Area	Relative to ISTD	R.T.
4.598	11.42 ng	201349	1,4-Dichlorobenzene-d4	6.851

Hit#	of 5	Tentative ID	MW	MolForm	CAS#	Qual
1		1,4-Pentadiene, 2,3,3-trimethyl-	110	C8H14	000756-02-5	81
2		Cyclopentene, 1,2,3-trimethyl-	110	C8H14	000473-91-6	81
3		1,3-Dimethyl-1-cyclohexene	110	C8H14	002808-76-6	64
4		Bicyclo[3.1.0]hexane, 1,5-dimethyl-	110	C8H14	1010142-17-5	62
5		1,4-Pentadiene, 2,3,4-trimethyl-	110	C8H14	072014-90-5	59



Data Path : Z:\svoasrv\HPCHEM1\BNA_F\Data\BF121924\
 Data File : BF140928.D
 Acq On : 19 Dec 2024 16:05
 Operator : RC/JU
 Sample : P5291-05
 Misc :
 ALS Vial : 12 Sample Multiplier: 1

Instrument :
 BNA_F
 ClientSampleId :
 MW2-20241213

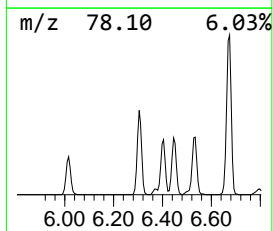
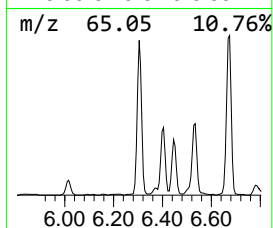
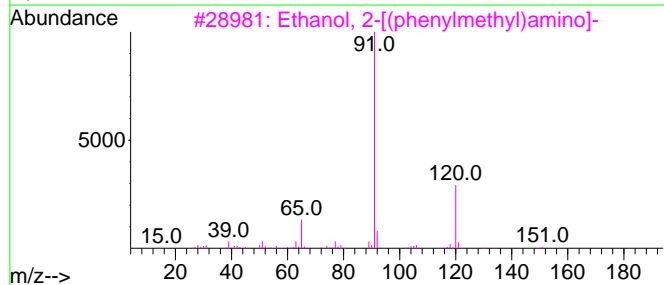
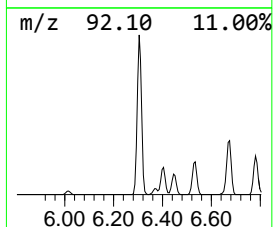
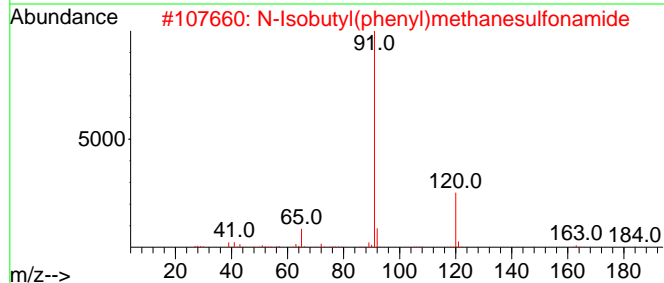
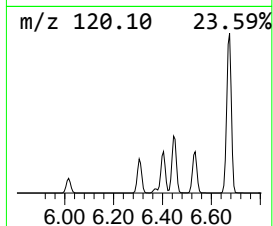
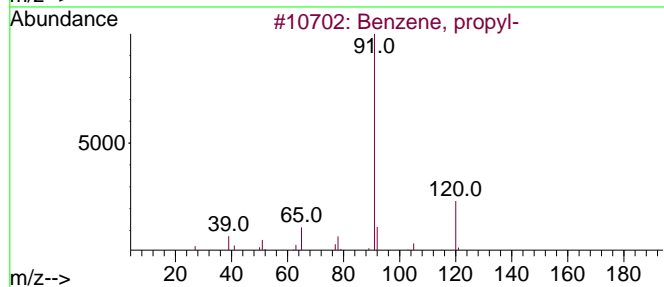
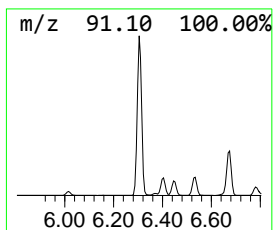
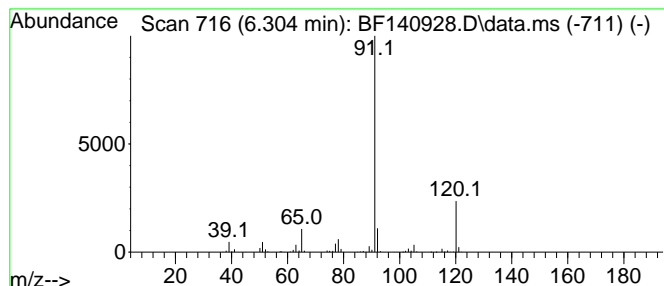
Quant Method : Z:\svoasrv\HPCHEM1\BNA_F\Methods\8270-BF121624.M
 Quant Title : ASP BNA STANDARDS FOR 5 POINT CALIBRATION

TIC Library : C:\Database\NIST20.L
 TIC Integration Parameters: LSCINT.P

 Peak Number 6 Benzene, propyl- Concentration Rank 7

R.T.	EstConc	Area	Relative to ISTD	R.T.
6.304	47.78 ng	842490	1,4-Dichlorobenzene-d4	6.851

Hit#	of	5	Tentative ID	MW	MolForm	CAS#	Qual
1			Benzene, propyl-	120	C9H12	000103-65-1	94
2			N-Isobutyl(phenyl)methanesulfona...	227	C11H17NO2S	144615-94-1	72
3			Ethanol, 2-[(phenylmethyl)amino]-	151	C9H13NO	000104-63-2	72
4			Benzyl(2-chloroethyl)amine	169	C9H12ClN	042074-16-8	64
5			1,2-Ethanediamine, N,N'-bis(phen...	240	C16H20N2	000140-28-3	64



Data Path : Z:\svoasrv\HPCHEM1\BNA_F\Data\BF121924\
 Data File : BF140928.D
 Acq On : 19 Dec 2024 16:05
 Operator : RC/JU
 Sample : P5291-05
 Misc :
 ALS Vial : 12 Sample Multiplier: 1

Instrument :
 BNA_F
 ClientSampleId :
 MW2-20241213

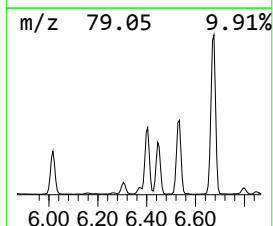
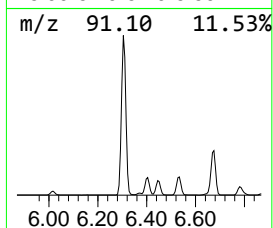
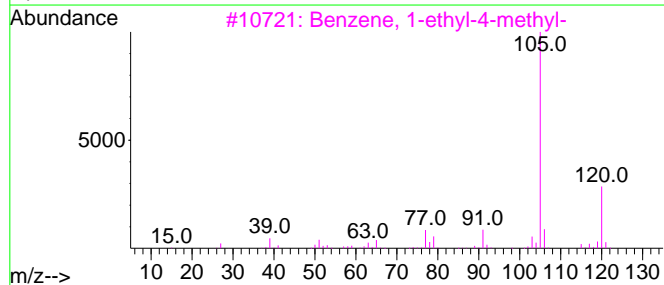
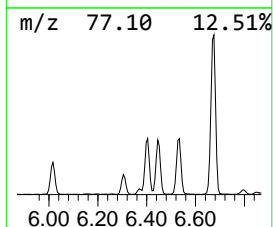
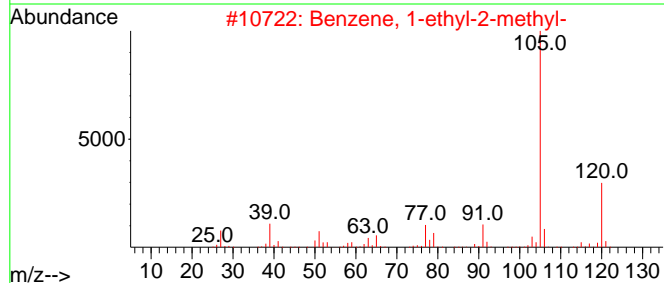
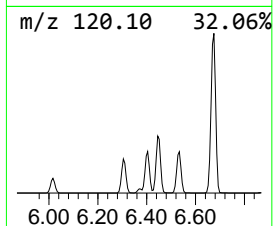
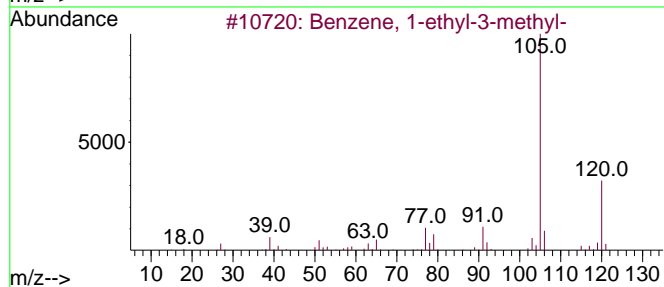
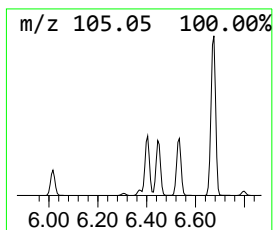
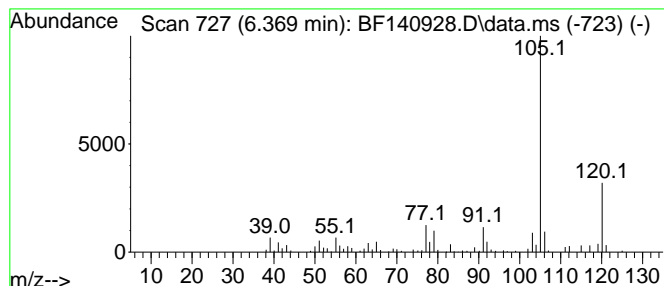
Quant Method : Z:\svoasrv\HPCHEM1\BNA_F\Methods\8270-BF121624.M
 Quant Title : ASP BNA STANDARDS FOR 5 POINT CALIBRATION

TIC Library : C:\Database\NIST20.L
 TIC Integration Parameters: LSCINT.P

 Peak Number 7 Benzene, 1-ethyl-3-methyl- Concentration Rank 20

R.T.	EstConc	Area	Relative to ISTD	R.T.
6.369	6.14 ng	108298	1,4-Dichlorobenzene-d4	6.851

Hit#	of	5	Tentative ID	MW	MolForm	CAS#	Qual
1			Benzene, 1-ethyl-3-methyl-	120	C9H12	000620-14-4	97
2			Benzene, 1-ethyl-2-methyl-	120	C9H12	000611-14-3	95
3			Benzene, 1-ethyl-4-methyl-	120	C9H12	000622-96-8	91
4			Mesitylene	120	C9H12	000108-67-8	91
5			Benzene, 1,2,3-trimethyl-	120	C9H12	000526-73-8	90



Data Path : Z:\svoasrv\HPCHEM1\BNA_F\Data\BF121924\
 Data File : BF140928.D
 Acq On : 19 Dec 2024 16:05
 Operator : RC/JU
 Sample : P5291-05
 Misc :
 ALS Vial : 12 Sample Multiplier: 1

Instrument :
 BNA_F
 ClientSampleId :
 MW2-20241213

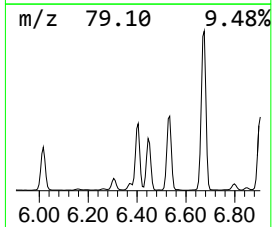
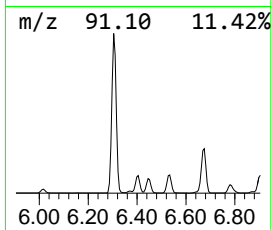
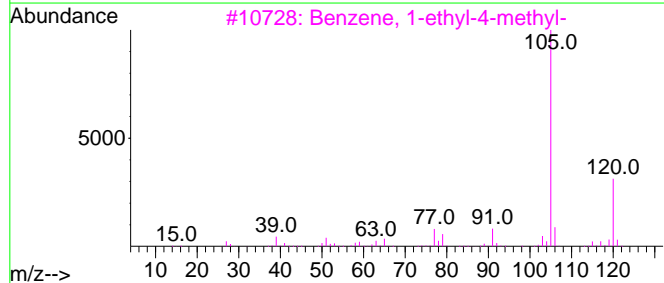
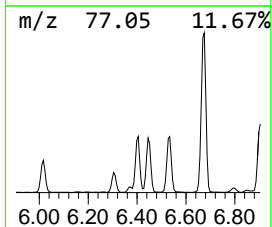
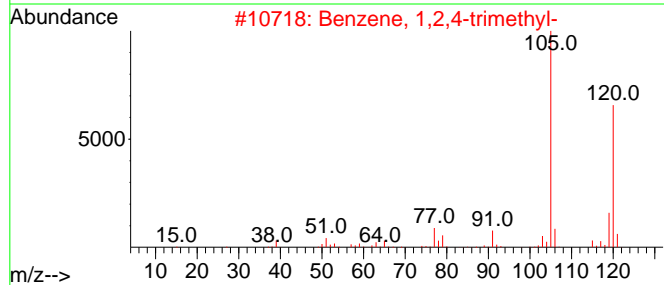
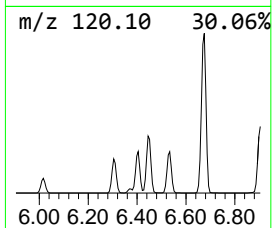
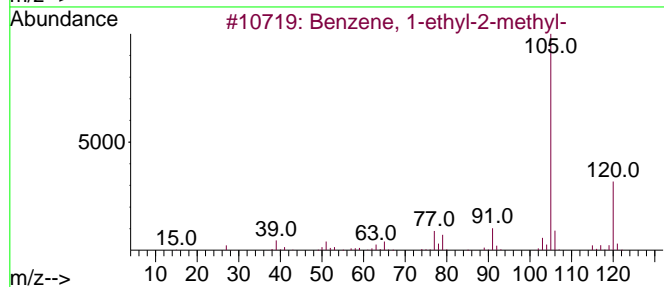
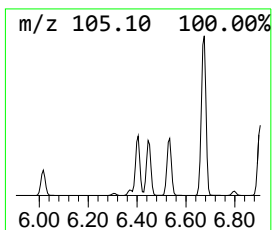
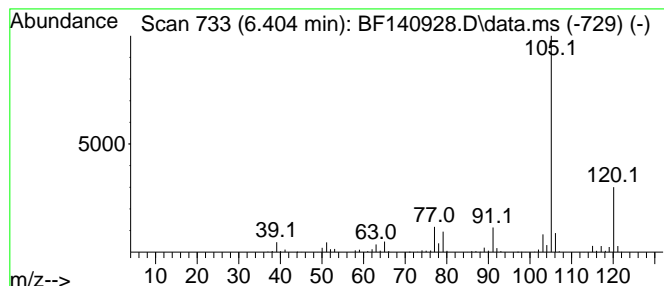
Quant Method : Z:\svoasrv\HPCHEM1\BNA_F\Methods\8270-BF121624.M
 Quant Title : ASP BNA STANDARDS FOR 5 POINT CALIBRATION

TIC Library : C:\Database\NIST20.L
 TIC Integration Parameters: LSCINT.P

 Peak Number 8 Benzene, 1-ethyl-2-methyl- Concentration Rank 6

R.T.	EstConc	Area	Relative to ISTD	R.T.
6.404	54.36 ng	958582	1,4-Dichlorobenzene-d4	6.851

Hit#	of	5	Tentative ID	MW	MolForm	CAS#	Qual
1			Benzene, 1-ethyl-2-methyl-	120	C9H12	000611-14-3	95
2			Benzene, 1,2,4-trimethyl-	120	C9H12	000095-63-6	91
3			Benzene, 1-ethyl-4-methyl-	120	C9H12	000622-96-8	91
4			Benzene, 1-ethyl-3-methyl-	120	C9H12	000620-14-4	91
5			Mesitylene	120	C9H12	000108-67-8	91



Data Path : Z:\svoasrv\HPCHEM1\BNA_F\Data\BF121924\
 Data File : BF140928.D
 Acq On : 19 Dec 2024 16:05
 Operator : RC/JU
 Sample : P5291-05
 Misc :
 ALS Vial : 12 Sample Multiplier: 1

Instrument :
 BNA_F
 ClientSampleId :
 MW2-20241213

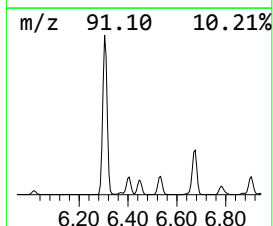
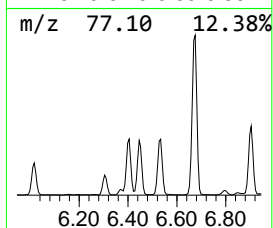
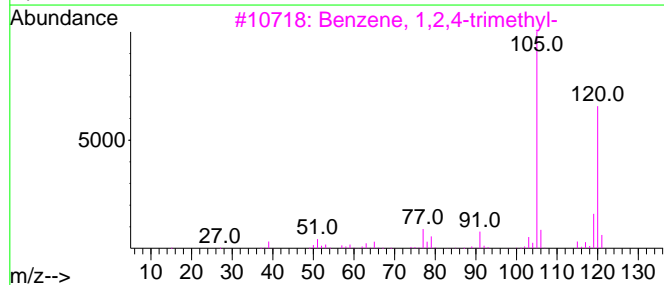
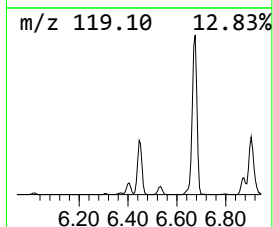
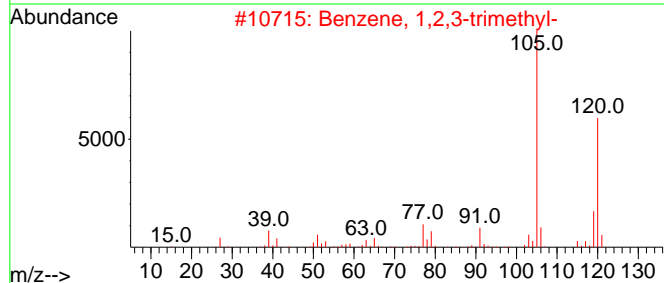
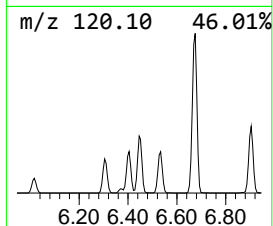
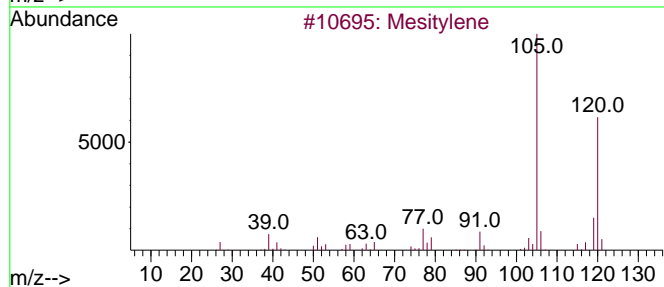
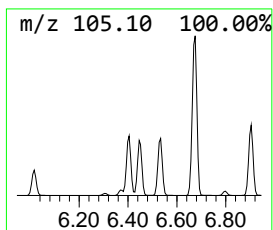
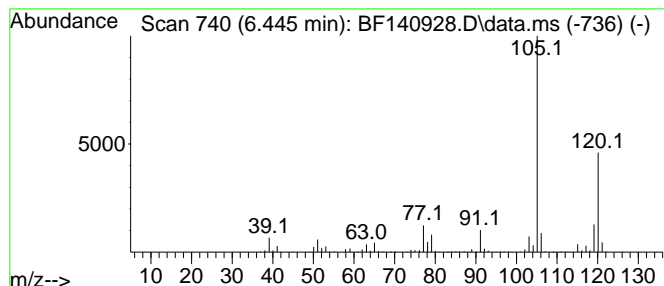
Quant Method : Z:\svoasrv\HPCHEM1\BNA_F\Methods\8270-BF121624.M
 Quant Title : ASP BNA STANDARDS FOR 5 POINT CALIBRATION

TIC Library : C:\Database\NIST20.L
 TIC Integration Parameters: LSCINT.P

 Peak Number 9 Mesitylene Concentration Rank 5

R.T.	EstConc	Area	Relative to ISTD	R.T.
6.445	57.72 ng	1017850	1,4-Dichlorobenzene-d4	6.851

Hit#	of	Tentative ID	MW	MolForm	CAS#	Qual
1	5	Mesitylene	120	C9H12	000108-67-8	97
2		Benzene, 1,2,3-trimethyl-	120	C9H12	000526-73-8	97
3		Benzene, 1,2,4-trimethyl-	120	C9H12	000095-63-6	95
4		Benzene, 1-ethyl-3-methyl-	120	C9H12	000620-14-4	90
5		Benzene, 1-ethyl-4-methyl-	120	C9H12	000622-96-8	90



Data Path : Z:\svoasrv\HPCHEM1\BNA_F\Data\BF121924\
 Data File : BF140928.D
 Acq On : 19 Dec 2024 16:05
 Operator : RC/JU
 Sample : P5291-05
 Misc :
 ALS Vial : 12 Sample Multiplier: 1

Instrument :
 BNA_F
 ClientSampleId :
 MW2-20241213

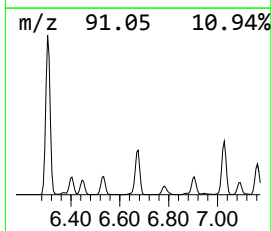
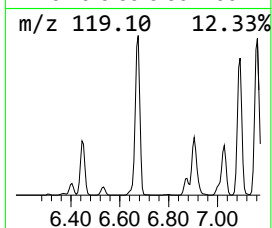
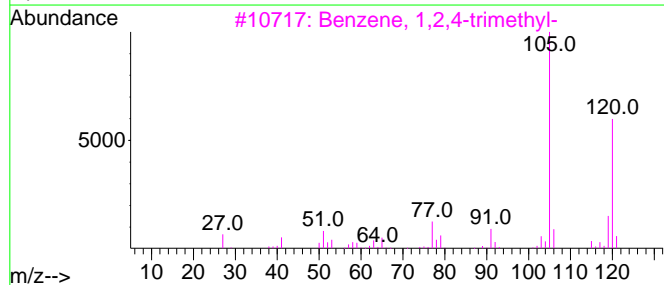
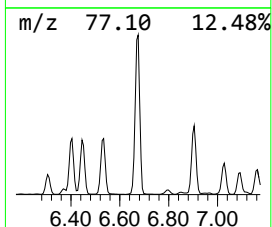
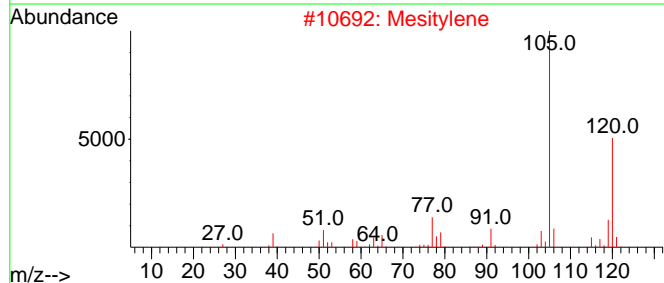
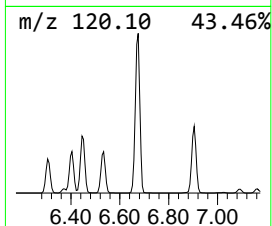
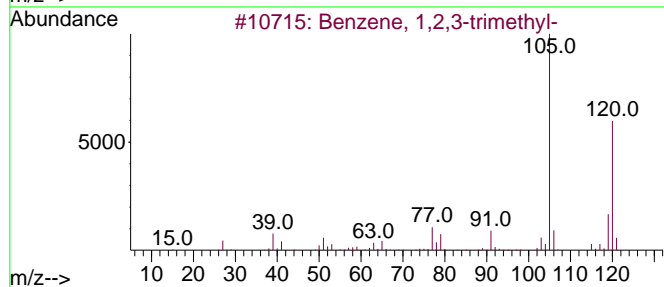
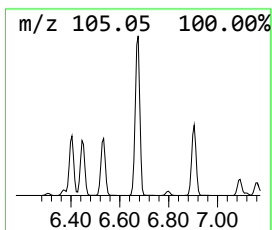
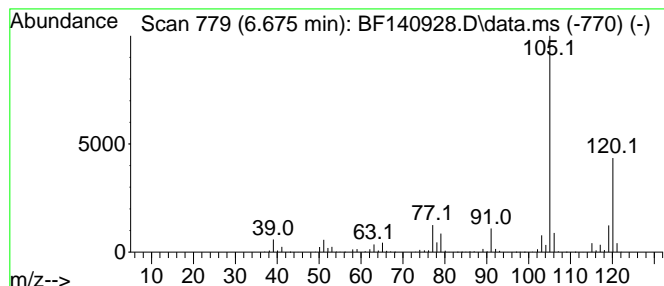
Quant Method : Z:\svoasrv\HPCHEM1\BNA_F\Methods\8270-BF121624.M
 Quant Title : ASP BNA STANDARDS FOR 5 POINT CALIBRATION

TIC Library : C:\Database\NIST20.L
 TIC Integration Parameters: LSCINT.P

 Peak Number 10 Benzene, 1,2,3-trimethyl- Concentration Rank 2

R.T.	EstConc	Area	Relative to ISTD	R.T.
6.675	176.36 ng	3109970	1,4-Dichlorobenzene-d4	6.851

Hit#	of 5	Tentative ID	MW	MolForm	CAS#	Qual
1		Benzene, 1,2,3-trimethyl-	120	C9H12	000526-73-8	97
2		Mesitylene	120	C9H12	000108-67-8	97
3		Benzene, 1,2,4-trimethyl-	120	C9H12	000095-63-6	95
4		Benzene, 1-ethyl-4-methyl-	120	C9H12	000622-96-8	90
5		Benzene, 1-ethyl-3-methyl-	120	C9H12	000620-14-4	90



Data Path : Z:\svoasrv\HPCHEM1\BNA_F\Data\BF121924\
 Data File : BF140928.D
 Acq On : 19 Dec 2024 16:05
 Operator : RC/JU
 Sample : P5291-05
 Misc :
 ALS Vial : 12 Sample Multiplier: 1

Instrument :
 BNA_F
 ClientSampleId :
 MW2-20241213

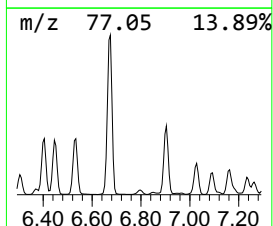
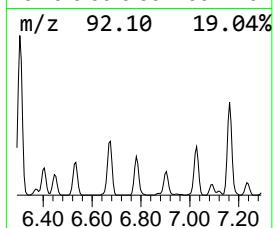
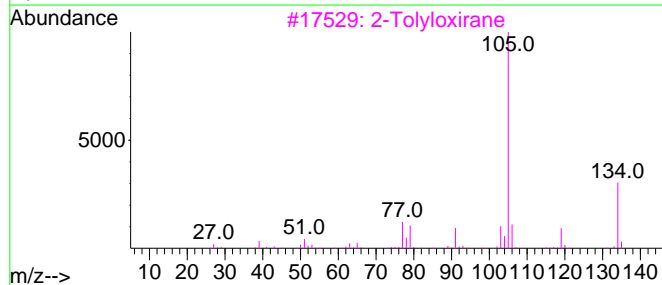
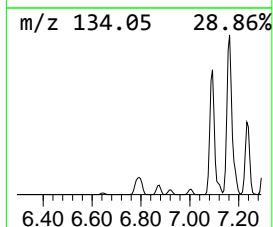
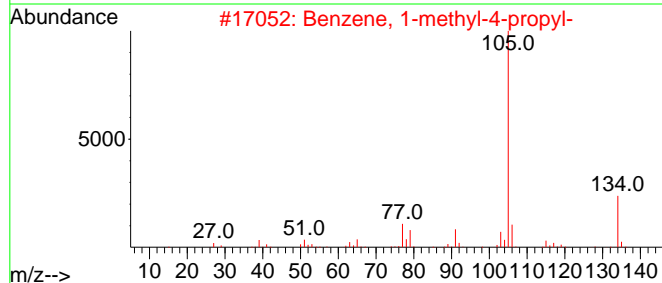
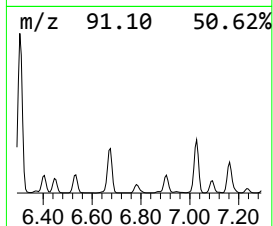
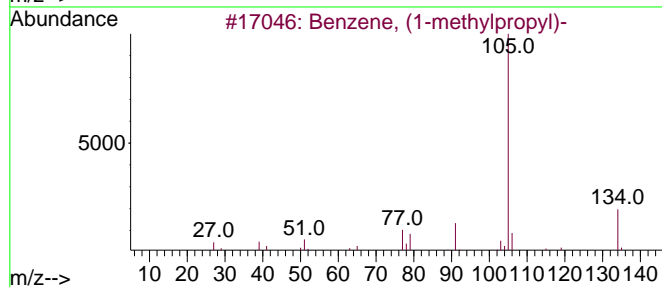
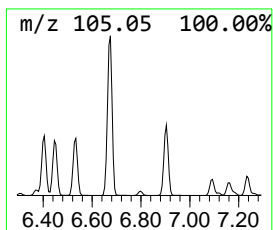
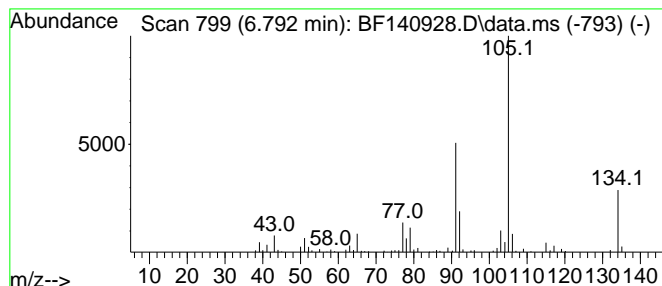
Quant Method : Z:\svoasrv\HPCHEM1\BNA_F\Methods\8270-BF121624.M
 Quant Title : ASP BNA STANDARDS FOR 5 POINT CALIBRATION

TIC Library : C:\Database\NIST20.L
 TIC Integration Parameters: LSCINT.P

 Peak Number 11 Benzene, (1-methylpropyl)- Concentration Rank 18

R.T.	EstConc	Area	Relative to ISTD	R.T.
6.792	7.68 ng	135433	1,4-Dichlorobenzene-d4	6.851

Hit#	of	5	Tentative ID	MW	MolForm	CAS#	Qual
1			Benzene, (1-methylpropyl)-	134	C10H14	000135-98-8	81
2			Benzene, 1-methyl-4-propyl-	134	C10H14	001074-55-1	76
3			2-Tolyloxirane	134	C9H10O	002783-26-8	76
4			Cyclohexane, 1,3-butadienyliidene-	134	C10H14	053864-08-7	64
5			Benzene, 1-methyl-3-propyl-	134	C10H14	001074-43-7	58



Data Path : Z:\svoasrv\HPCHEM1\BNA_F\Data\BF121924\
 Data File : BF140928.D
 Acq On : 19 Dec 2024 16:05
 Operator : RC/JU
 Sample : P5291-05
 Misc :
 ALS Vial : 12 Sample Multiplier: 1

Instrument :
 BNA_F
 ClientSampleId :
 MW2-20241213

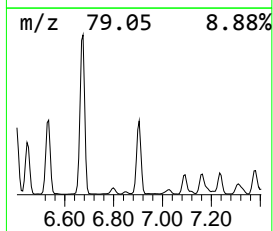
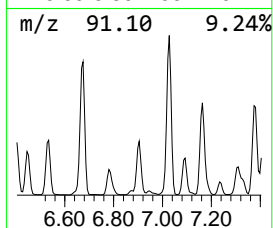
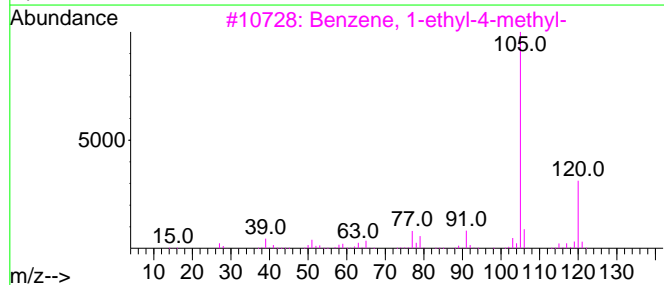
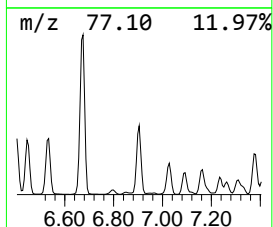
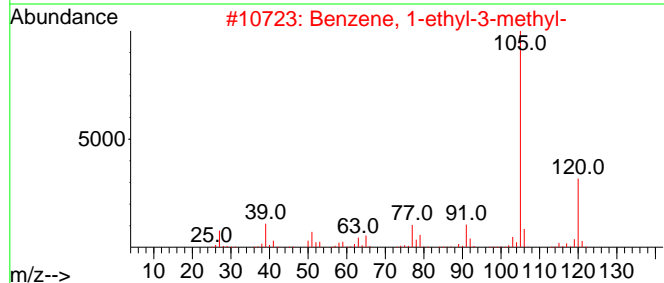
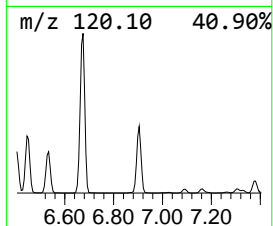
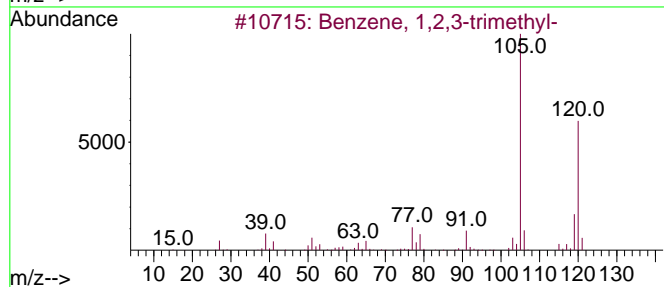
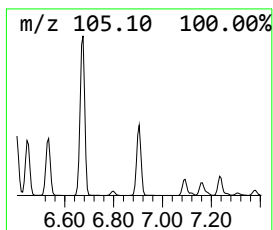
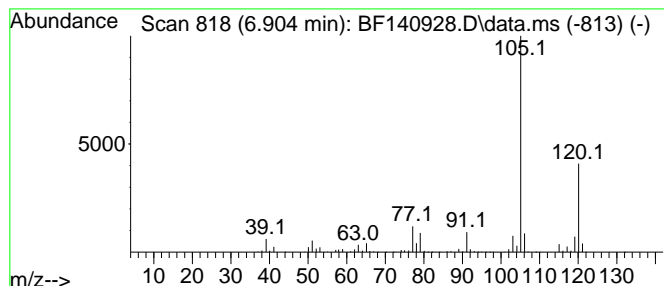
Quant Method : Z:\svoasrv\HPCHEM1\BNA_F\Methods\8270-BF121624.M
 Quant Title : ASP BNA STANDARDS FOR 5 POINT CALIBRATION

TIC Library : C:\Database\NIST20.L
 TIC Integration Parameters: LSCINT.P

 Peak Number 12 Benzene, 1-ethyl-4-methyl- Concentration Rank 4

R.T.	EstConc	Area	Relative to ISTD	R.T.
6.904	75.08 ng	1323920	1,4-Dichlorobenzene-d4	6.851

Hit#	of 5	Tentative ID	MW	MolForm	CAS#	Qual
1		Benzene, 1,2,3-trimethyl-	120	C9H12	000526-73-8	93
2		Benzene, 1-ethyl-3-methyl-	120	C9H12	000620-14-4	91
3		Benzene, 1-ethyl-4-methyl-	120	C9H12	000622-96-8	91
4		Mesitylene	120	C9H12	000108-67-8	91
5		Benzene, 1,2,4-trimethyl-	120	C9H12	000095-63-6	90



Data Path : Z:\svoasrv\HPCHEM1\BNA_F\Data\BF121924\
 Data File : BF140928.D
 Acq On : 19 Dec 2024 16:05
 Operator : RC/JU
 Sample : P5291-05
 Misc :
 ALS Vial : 12 Sample Multiplier: 1

Instrument :
 BNA_F
 ClientSampleId :
 MW2-20241213

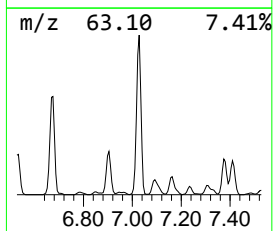
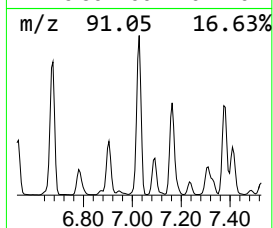
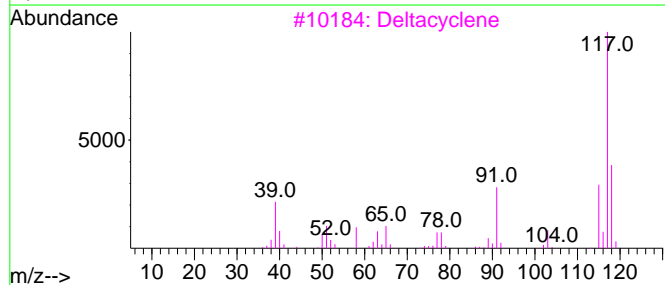
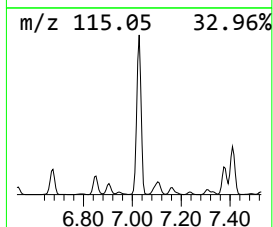
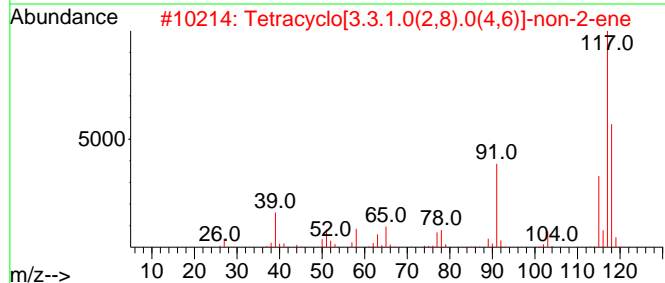
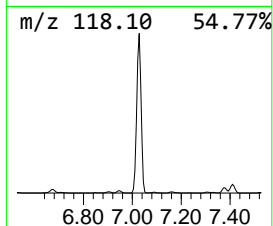
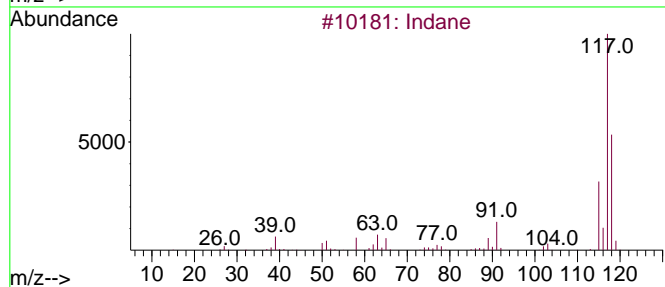
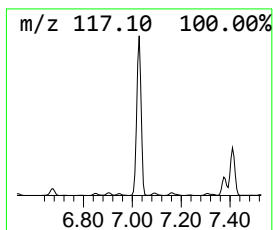
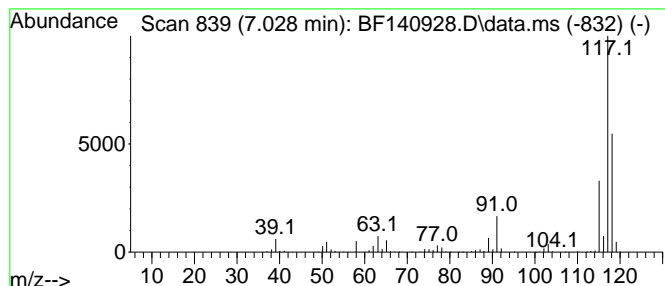
Quant Method : Z:\svoasrv\HPCHEM1\BNA_F\Methods\8270-BF121624.M
 Quant Title : ASP BNA STANDARDS FOR 5 POINT CALIBRATION

TIC Library : C:\Database\NIST20.L
 TIC Integration Parameters: LSCINT.P

 Peak Number 13 Indane Concentration Rank 3

R.T.	EstConc	Area	Relative to ISTD	R.T.
7.028	141.69 ng	2498500	1,4-Dichlorobenzene-d4	6.851

Hit#	of 5	Tentative ID	MW	MolForm	CAS#	Qual
1		Indane	118	C9H10	000496-11-7	93
2		Tetracyclo[3.3.1.0(2,8).0(4,6)]-...	118	C9H10	1000191-13-7	80
3		Deltacyclene	118	C9H10	007785-10-6	72
4		Benzene, 2-propenyl-	118	C9H10	000300-57-2	64
5		Benzeneethanol, .beta.-ethenyl-	148	C10H12O	006052-63-7	53



Data Path : Z:\svoasrv\HPCHEM1\BNA_F\Data\BF121924\
 Data File : BF140928.D
 Acq On : 19 Dec 2024 16:05
 Operator : RC/JU
 Sample : P5291-05
 Misc :
 ALS Vial : 12 Sample Multiplier: 1

Instrument :
 BNA_F
 ClientSampleId :
 MW2-20241213

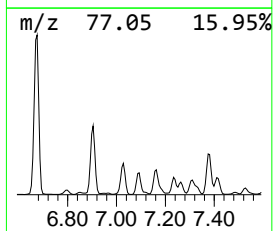
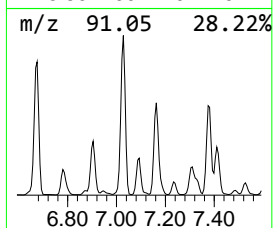
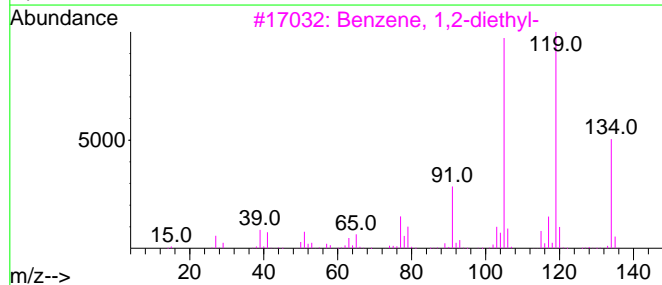
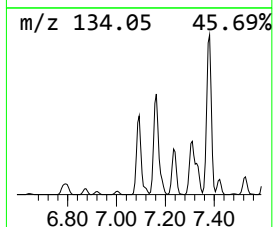
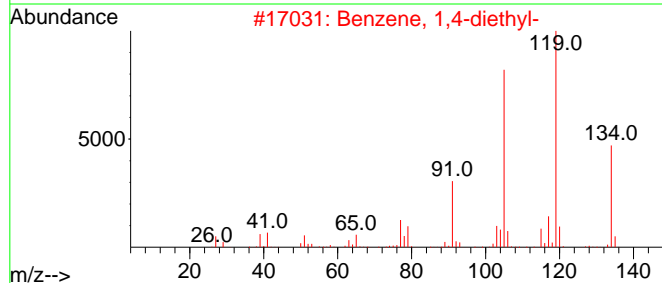
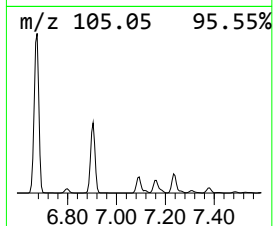
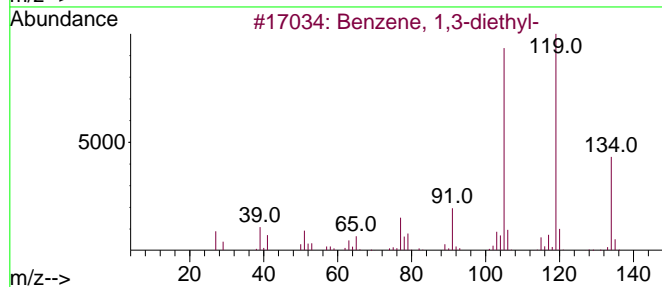
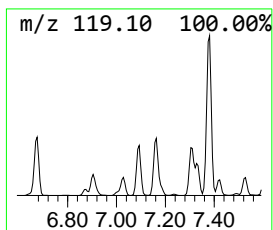
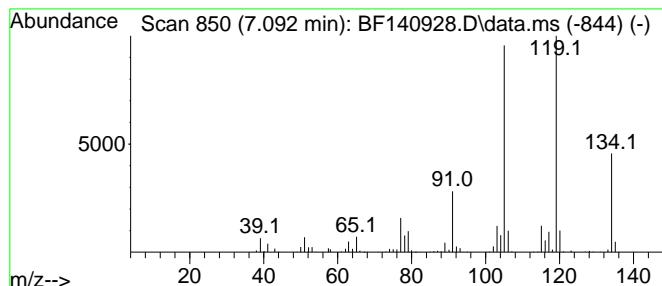
Quant Method : Z:\svoasrv\HPCHEM1\BNA_F\Methods\8270-BF121624.M
 Quant Title : ASP BNA STANDARDS FOR 5 POINT CALIBRATION

TIC Library : C:\Database\NIST20.L
 TIC Integration Parameters: LSCINT.P

 Peak Number 14 Benzene, 1,3-diethyl- Concentration Rank 9

R.T.	EstConc	Area	Relative to ISTD	R.T.
7.092	33.67 ng	593659	1,4-Dichlorobenzene-d4	6.851

Hit#	of 5	Tentative ID	MW	MolForm	CAS#	Qual
1		Benzene, 1,3-diethyl-	134	C10H14	000141-93-5	95
2		Benzene, 1,4-diethyl-	134	C10H14	000105-05-5	93
3		Benzene, 1,2-diethyl-	134	C10H14	000135-01-3	93
4		Benzene, 1-ethyl-3,5-dimethyl-	134	C10H14	000934-74-7	91
5		Benzene, 1-ethyl-2,3-dimethyl-	134	C10H14	000933-98-2	91



Data Path : Z:\svoasrv\HPCHEM1\BNA_F\Data\BF121924\
 Data File : BF140928.D
 Acq On : 19 Dec 2024 16:05
 Operator : RC/JU
 Sample : P5291-05
 Misc :
 ALS Vial : 12 Sample Multiplier: 1

Instrument :
 BNA_F
 ClientSampleId :
 MW2-20241213

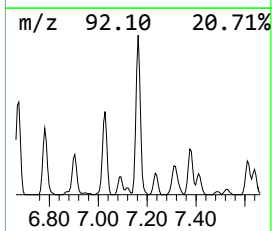
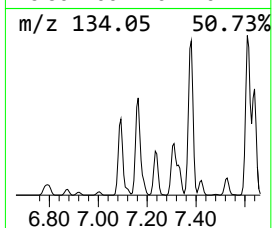
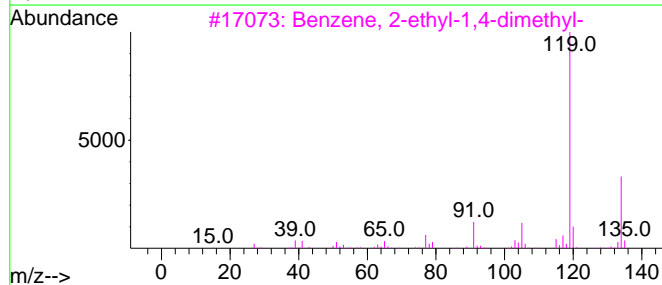
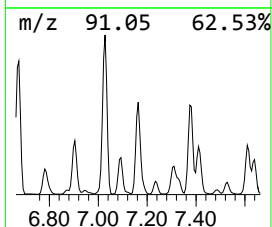
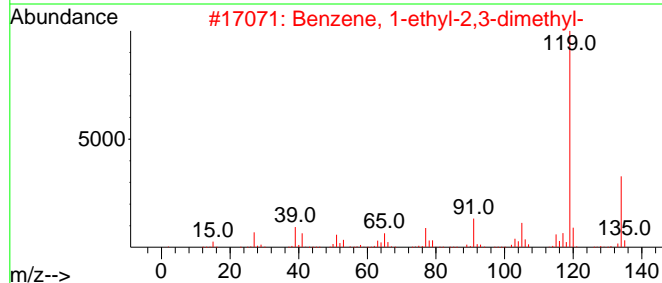
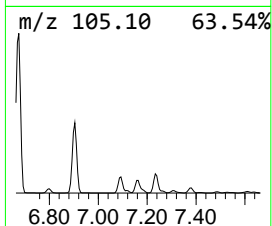
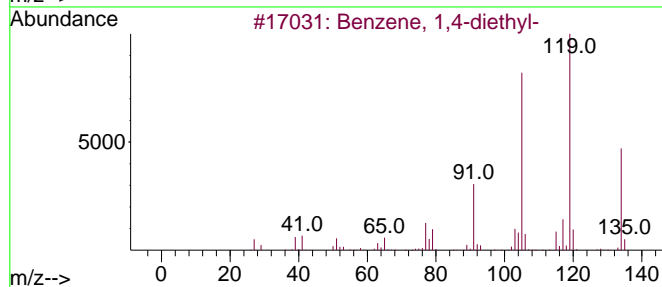
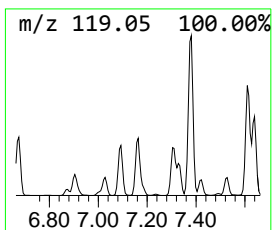
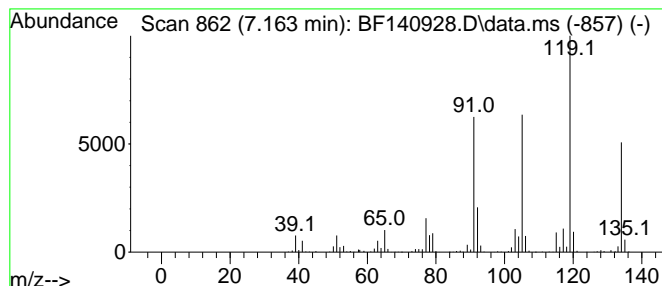
Quant Method : Z:\svoasrv\HPCHEM1\BNA_F\Methods\8270-BF121624.M
 Quant Title : ASP BNA STANDARDS FOR 5 POINT CALIBRATION

TIC Library : C:\Database\NIST20.L
 TIC Integration Parameters: LSCINT.P

 Peak Number 15 Benzene, 1,4-diethyl- Concentration Rank 8

R.T.	EstConc	Area	Relative to ISTD	R.T.
7.163	41.50 ng	731737	1,4-Dichlorobenzene-d4	6.851

Hit#	of 5	Tentative ID	MW	MolForm	CAS#	Qual
1		Benzene, 1,4-diethyl-	134	C10H14	000105-05-5	94
2		Benzene, 1-ethyl-2,3-dimethyl-	134	C10H14	000933-98-2	94
3		Benzene, 2-ethyl-1,4-dimethyl-	134	C10H14	001758-88-9	94
4		Benzene, 1,2-diethyl-	134	C10H14	000135-01-3	93
5		Benzene, 1,3-diethyl-	134	C10H14	000141-93-5	93



Data Path : Z:\svoasrv\HPCHEM1\BNA_F\Data\BF121924\
 Data File : BF140928.D
 Acq On : 19 Dec 2024 16:05
 Operator : RC/JU
 Sample : P5291-05
 Misc :
 ALS Vial : 12 Sample Multiplier: 1

Instrument :
 BNA_F
 ClientSampleId :
 MW2-20241213

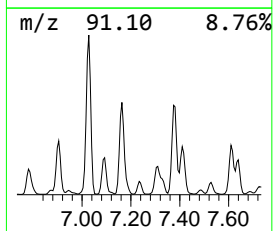
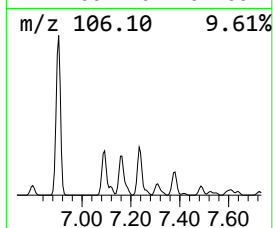
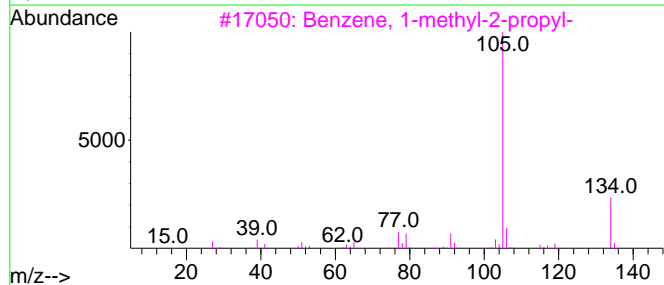
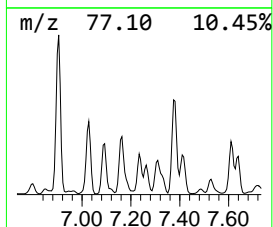
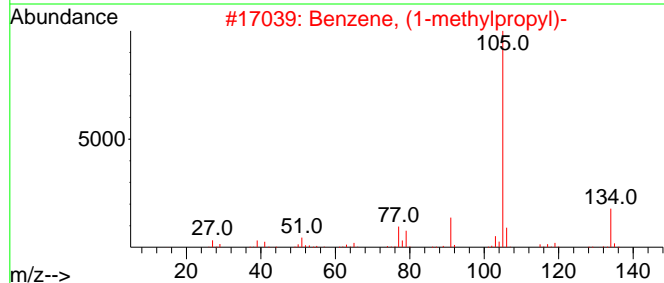
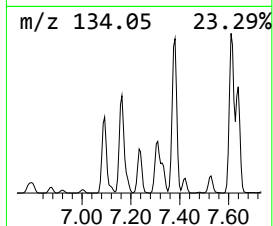
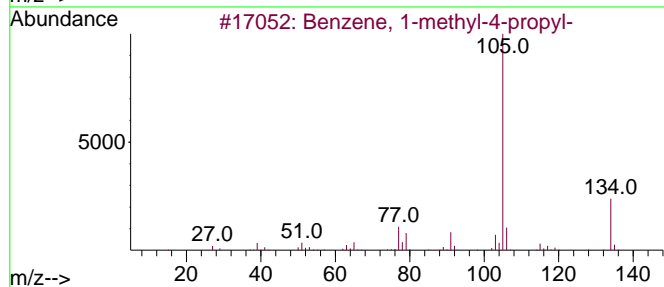
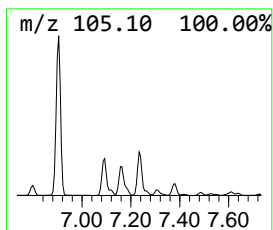
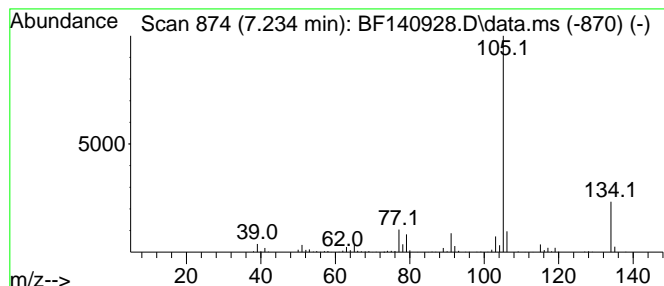
Quant Method : Z:\svoasrv\HPCHEM1\BNA_F\Methods\8270-BF121624.M
 Quant Title : ASP BNA STANDARDS FOR 5 POINT CALIBRATION

TIC Library : C:\Database\NIST20.L
 TIC Integration Parameters: LSCINT.P

 Peak Number 16 Benzene, 1-methyl-4-propyl- Concentration Rank 12

R.T.	EstConc	Area	Relative to ISTD	R.T.
7.234	17.94 ng	316304	1,4-Dichlorobenzene-d4	6.851

Hit#	of 5	Tentative ID	MW	MolForm	CAS#	Qual
1		Benzene, 1-methyl-4-propyl-	134	C10H14	001074-55-1	94
2		Benzene, (1-methylpropyl)-	134	C10H14	000135-98-8	91
3		Benzene, 1-methyl-2-propyl-	134	C10H14	001074-17-5	91
4		Benzeneacetaldehyde, .alpha.-met...	134	C9H10O	000093-53-8	83
5		Benzene, 1-methyl-3-propyl-	134	C10H14	001074-43-7	72



Data Path : Z:\svoasrv\HPCHEM1\BNA_F\Data\BF121924\
 Data File : BF140928.D
 Acq On : 19 Dec 2024 16:05
 Operator : RC/JU
 Sample : P5291-05
 Misc :
 ALS Vial : 12 Sample Multiplier: 1

Instrument :
 BNA_F
 ClientSampleId :
 MW2-20241213

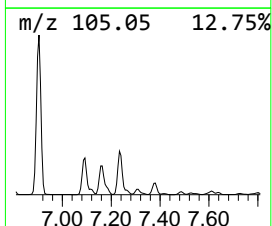
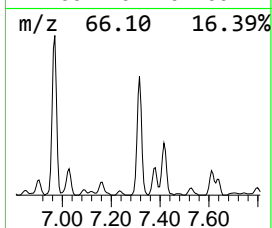
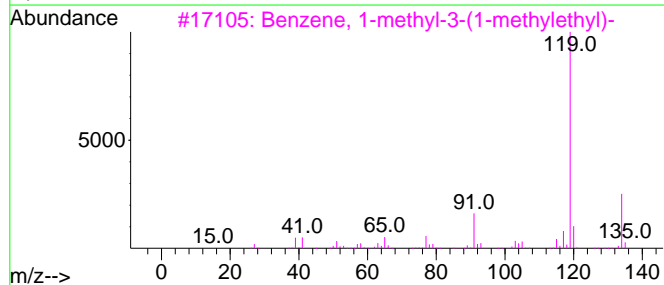
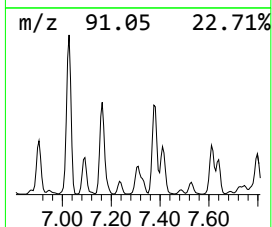
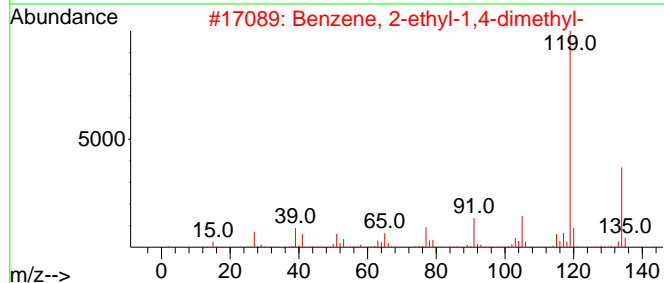
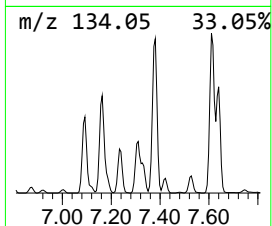
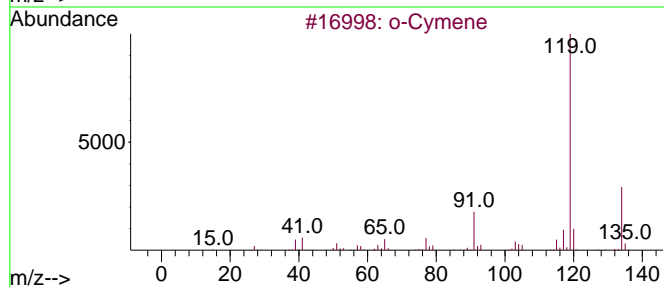
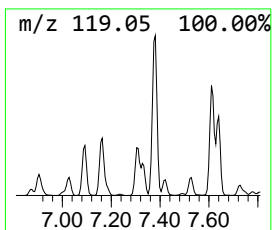
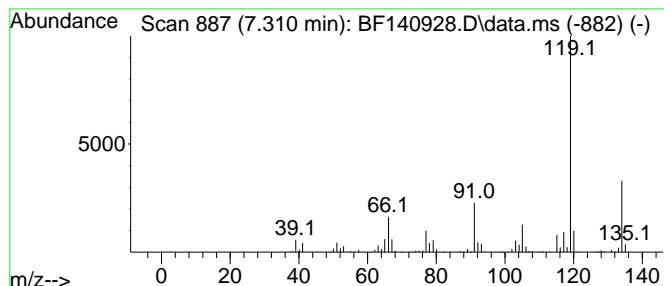
Quant Method : Z:\svoasrv\HPCHEM1\BNA_F\Methods\8270-BF121624.M
 Quant Title : ASP BNA STANDARDS FOR 5 POINT CALIBRATION

TIC Library : C:\Database\NIST20.L
 TIC Integration Parameters: LSCINT.P

 Peak Number 17 o-Cymene Concentration Rank 10

R.T.	EstConc	Area	Relative to ISTD	R.T.
7.310	29.23 ng	515524	1,4-Dichlorobenzene-d4	6.851

Hit#	of 5	Tentative ID	MW	MolForm	CAS#	Qual
1		o-Cymene	134	C10H14	000527-84-4	94
2		Benzene, 2-ethyl-1,4-dimethyl-	134	C10H14	001758-88-9	94
3		Benzene, 1-methyl-3-(1-methyleth...)	134	C10H14	000535-77-3	94
4		Benzene, 4-ethyl-1,2-dimethyl-	134	C10H14	000934-80-5	94
5		Benzene, 1-ethyl-2,3-dimethyl-	134	C10H14	000933-98-2	93



Data Path : Z:\svoasrv\HPCHEM1\BNA_F\Data\BF121924\
 Data File : BF140928.D
 Acq On : 19 Dec 2024 16:05
 Operator : RC/JU
 Sample : P5291-05
 Misc :
 ALS Vial : 12 Sample Multiplier: 1

Instrument :
 BNA_F
 ClientSampleId :
 MW2-20241213

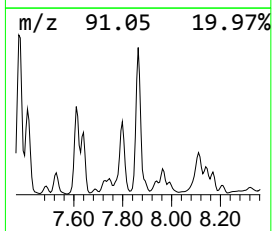
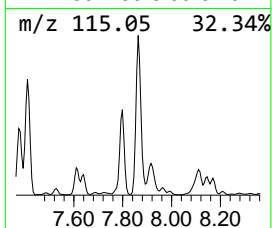
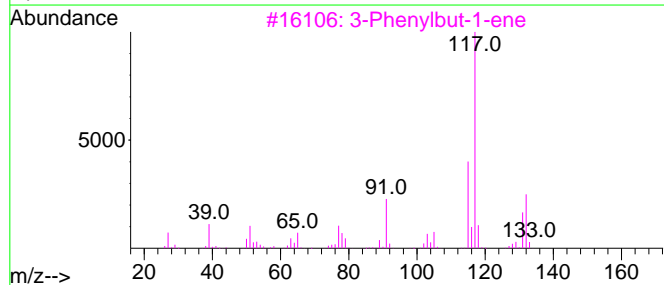
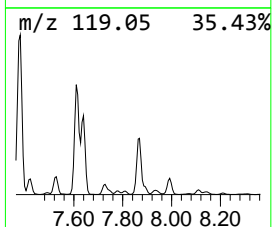
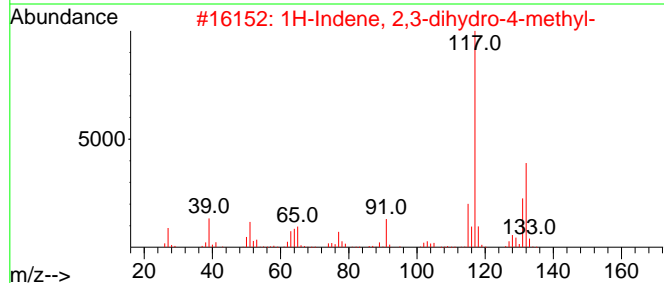
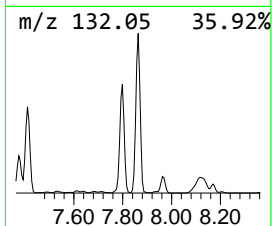
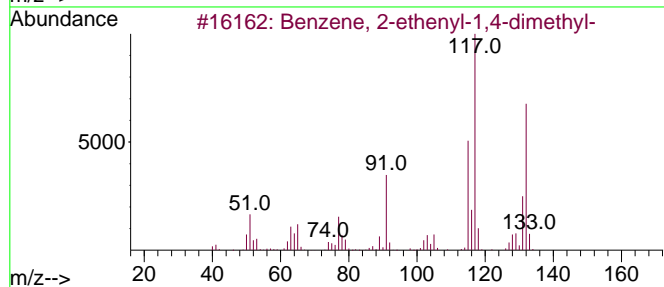
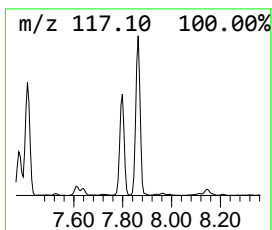
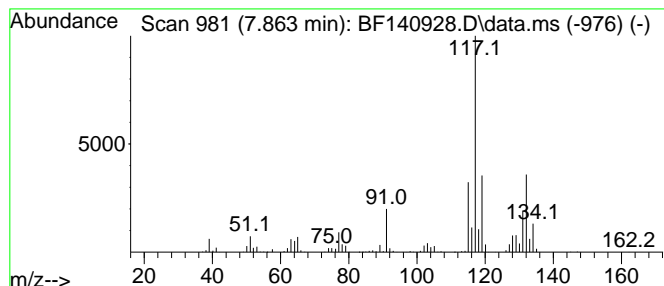
Quant Method : Z:\svoasrv\HPCHEM1\BNA_F\Methods\8270-BF121624.M
 Quant Title : ASP BNA STANDARDS FOR 5 POINT CALIBRATION

TIC Library : C:\Database\NIST20.L
 TIC Integration Parameters: LSCINT.P

 Peak Number 18 Benzene, 2-ethenyl-1,4-dime... Concentration Rank 16

R.T.	EstConc	Area	Relative to ISTD	R.T.
7.863	8.83 ng	1603280	Naphthalene-d8	8.128

Hit#	of 5	Tentative ID	MW	MolForm	CAS#	Qual
1		Benzene, 2-ethenyl-1,4-dimethyl-	132	C10H12	002039-89-6	95
2		1H-Indene, 2,3-dihydro-4-methyl-	132	C10H12	000824-22-6	83
3		3-Phenylbut-1-ene	132	C10H12	000934-10-1	81
4		Benzene, 1-ethenyl-3-ethyl-	132	C10H12	007525-62-4	76
5		Benzene, 1-ethenyl-4-ethyl-	132	C10H12	003454-07-7	76



Data Path : Z:\svoasrv\HPCHEM1\BNA_F\Data\BF121924\
 Data File : BF140928.D
 Acq On : 19 Dec 2024 16:05
 Operator : RC/JU
 Sample : P5291-05
 Misc :
 ALS Vial : 12 Sample Multiplier: 1

Instrument :
 BNA_F
 ClientSampleId :
 MW2-20241213

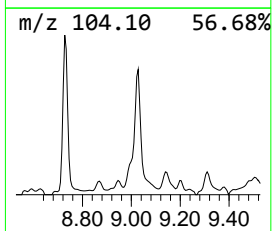
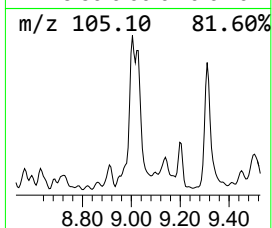
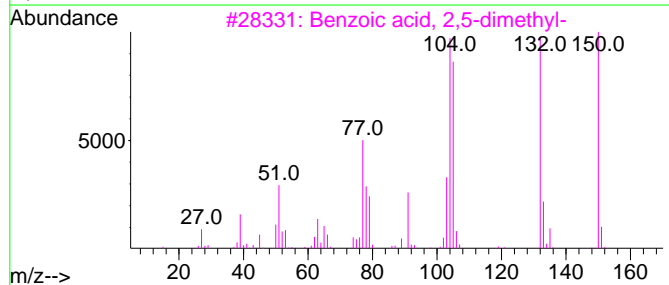
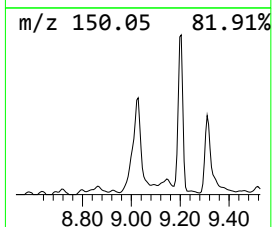
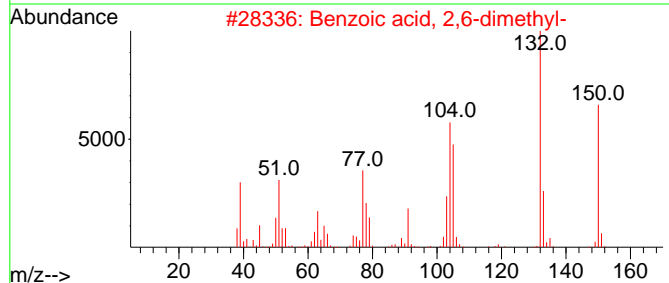
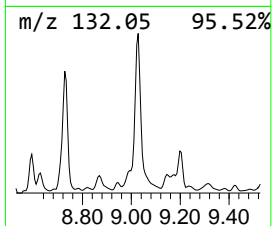
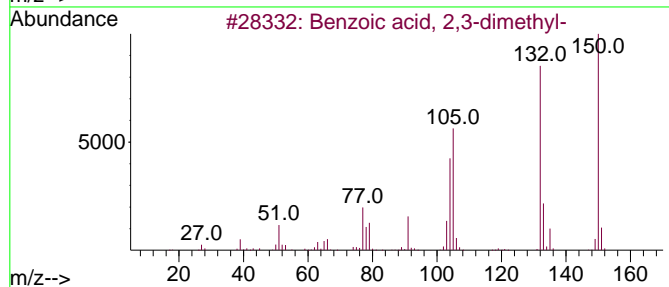
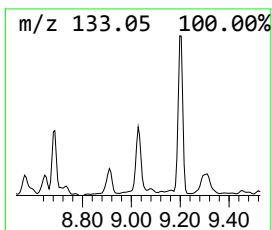
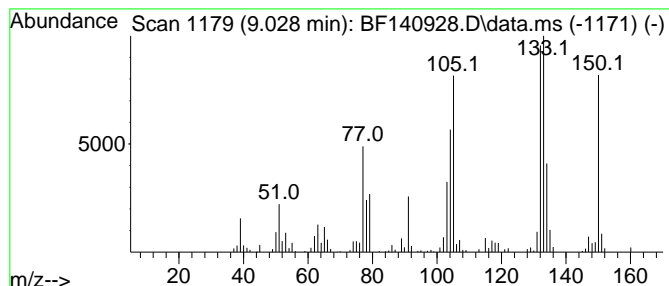
Quant Method : Z:\svoasrv\HPCHEM1\BNA_F\Methods\8270-BF121624.M
 Quant Title : ASP BNA STANDARDS FOR 5 POINT CALIBRATION

TIC Library : C:\Database\NIST20.L
 TIC Integration Parameters: LSCINT.P

 Peak Number 19 Benzoic acid, 2,3-dimethyl- Concentration Rank 17

R.T.	EstConc	Area	Relative to ISTD	R.T.
9.028	8.51 ng	179859	Acenaphthene-d10	9.880

Hit#	of 5	Tentative ID	MW	MolForm	CAS#	Qual
1		Benzoic acid, 2,3-dimethyl-	150	C9H10O2	000603-79-2	86
2		Benzoic acid, 2,6-dimethyl-	150	C9H10O2	000632-46-2	86
3		Benzoic acid, 2,5-dimethyl-	150	C9H10O2	000610-72-0	78
4		Benzoic acid, 2,4-dimethyl-	150	C9H10O2	000611-01-8	76
5		o-Tolylacetic acid	150	C9H10O2	000644-36-0	46



Data Path : Z:\svoasrv\HPCHEM1\BNA_F\Data\BF121924\
 Data File : BF140928.D
 Acq On : 19 Dec 2024 16:05
 Operator : RC/JU
 Sample : P5291-05
 Misc :
 ALS Vial : 12 Sample Multiplier: 1

Instrument :
 BNA_F
 ClientSampleId :
 MW2-20241213

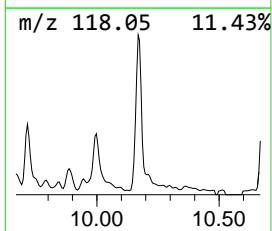
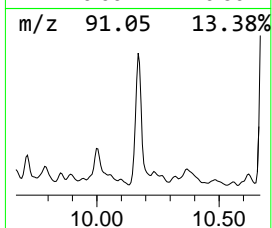
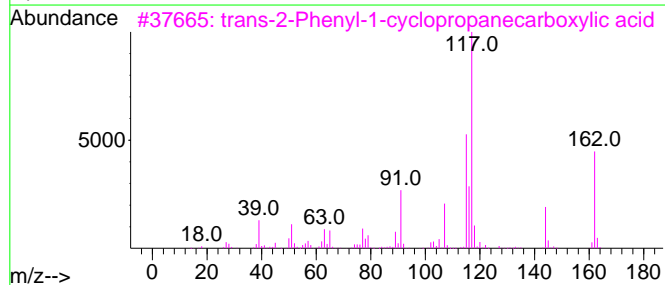
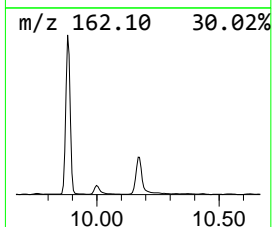
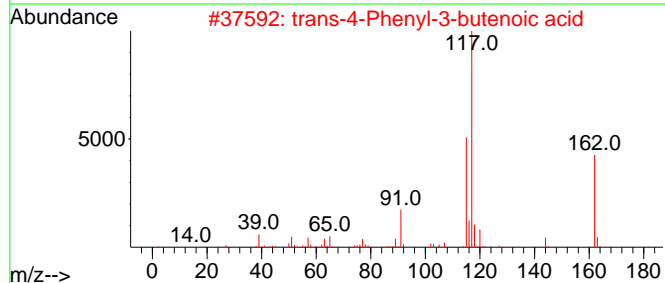
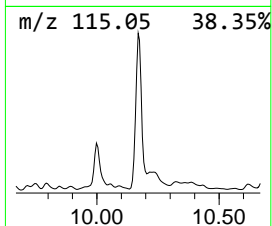
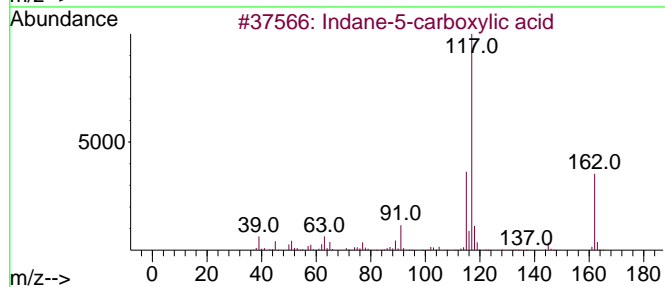
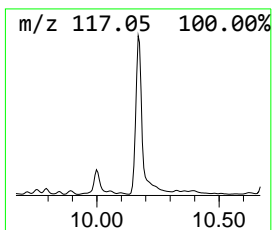
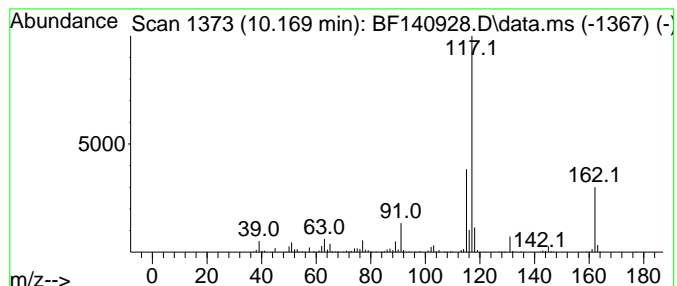
Quant Method : Z:\svoasrv\HPCHEM1\BNA_F\Methods\8270-BF121624.M
 Quant Title : ASP BNA STANDARDS FOR 5 POINT CALIBRATION

TIC Library : C:\Database\NIST20.L
 TIC Integration Parameters: LSCINT.P

 Peak Number 20 Indane-5-carboxylic acid Concentration Rank 13

R.T.	EstConc	Area	Relative to ISTD	R.T.
10.169	16.27 ng	343957	Acenaphthene-d10	9.880

Hit#	of 5	Tentative ID	MW	MolForm	CAS#	Qual
1		Indane-5-carboxylic acid	162	C10H10O2	065898-38-6	94
2		trans-4-Phenyl-3-butenic acid	162	C10H10O2	001914-58-5	91
3		trans-2-Phenyl-1-cyclopropanecar...	162	C10H10O2	000939-90-2	80
4		trans-Cinnamyl bromide	196	C9H9Br	026146-77-0	72
5		Benzene, (2-bromocyclopropyl)-	196	C9H9Br	036617-02-4	64



Data Path : Z:\svoasrv\HPCHEM1\BNA_F\Data\BF121924\
 Data File : BF140928.D
 Acq On : 19 Dec 2024 16:05
 Operator : RC/JU
 Sample : P5291-05
 Misc :
 ALS Vial : 12 Sample Multiplier: 1

Instrument :
 BNA_F
 ClientSampleId :
 MW2-20241213

Quant Method : Z:\svoasrv\HPCHEM1\BNA_F\Methods\8270-BF121624.M
 Quant Title : ASP BNA STANDARDS FOR 5 POINT CALIBRATION

TIC Library : C:\Database\NIST0.L
 TIC Integration Parameters: LSCINT.P

TIC Top Hit name	RT	EstConc	Units	Response	--Internal Standard--			
					#	RT	Resp	Conc
2-Hexene, 3-met...	2.487	9.8	ng	173421	1	6.851	352676	20.0
2,4-Heptadiene,...	3.593	6.4	ng	113175	1	6.851	352676	20.0
1,4-Pentadiene,...	4.598	11.4	ng	201349	1	6.851	352676	20.0
Benzene, propyl-	6.304	47.8	ng	842490	1	6.851	352676	20.0
Benzene, 1-ethy...	6.369	6.1	ng	108298	1	6.851	352676	20.0
Benzene, 1-ethy...	6.404	54.4	ng	958582	1	6.851	352676	20.0
Mesitylene	6.445	57.7	ng	1017850	1	6.851	352676	20.0
Benzene, 1,2,3-...	6.675	176.4	ng	3109970	1	6.851	352676	20.0
Benzene, (1-met...	6.792	7.7	ng	135433	1	6.851	352676	20.0
Benzene, 1-ethy...	6.904	75.1	ng	1323920	1	6.851	352676	20.0
Indane	7.028	141.7	ng	2498500	1	6.851	352676	20.0
Benzene, 1,3-di...	7.092	33.7	ng	593659	1	6.851	352676	20.0
Benzene, 1,4-di...	7.163	41.5	ng	731737	1	6.851	352676	20.0
Benzene, 1-meth...	7.234	17.9	ng	316304	1	6.851	352676	20.0
o-Cymene	7.310	29.2	ng	515524	1	6.851	352676	20.0
Benzene, 2-ethe...	7.863	8.8	ng	1603280	2	8.128	3629580	20.0
Benzoic acid, 2...	9.028	8.5	ng	179859	3	9.880	422759	20.0
Indane-5-carbox...	10.169	16.3	ng	343957	3	9.880	422759	20.0