

Data Path : Z:\svoasrv\HPCHEM1\BNA_F\Data\BF122022\
 Data File : BF131732.D
 Acq On : 21 Dec 2022 01:22
 Operator : CG\JU
 Sample : N6076-03
 Misc :
 ALS Vial : 17 Sample Multiplier: 1

Instrument :
 BNA_F
 ClientSampleId :
 MW-4

Quant Time: Dec 21 04:51:35 2022
 Quant Method : Z:\svoasrv\HPCHEM1\BNA_F\Methods\8270-BF122022.M
 Quant Title : ASP BNA STANDARDS FOR 5 POINT CALIBRATION
 QLast Update : Wed Dec 21 03:12:37 2022
 Response via : Initial Calibration

Compound	R.T.	QIon	Response	Conc	Units	Dev(Min)
Internal Standards						
1) 1,4-Dichlorobenzene-d4	6.863	152	83321	20.000	ng	0.00
21) Naphthalene-d8	8.151	136	300877	20.000	ng	0.00
39) Acenaphthene-d10	9.916	164	175978	20.000	ng	0.00
64) Phenanthrene-d10	11.410	188	338641	20.000	ng	0.00
76) Chrysene-d12	14.057	240	168655	20.000	ng	0.00
86) Perylene-d12	15.551	264	173849	20.000	ng	0.00
System Monitoring Compounds						
5) 2-Fluorophenol	5.481	112	465459	94.068	ng	0.00
7) Phenol-d6	6.492	99	483607	72.613	ng	-0.01
23) Nitrobenzene-d5	7.433	82	735793	99.278	ng	0.00
42) 2,4,6-Tribromophenol	10.710	330	289981	150.550	ng	0.00
45) 2-Fluorobiphenyl	9.239	172	1277265	101.673	ng	0.00
79) Terphenyl-d14	13.004	244	1016635	93.946	ng	0.00

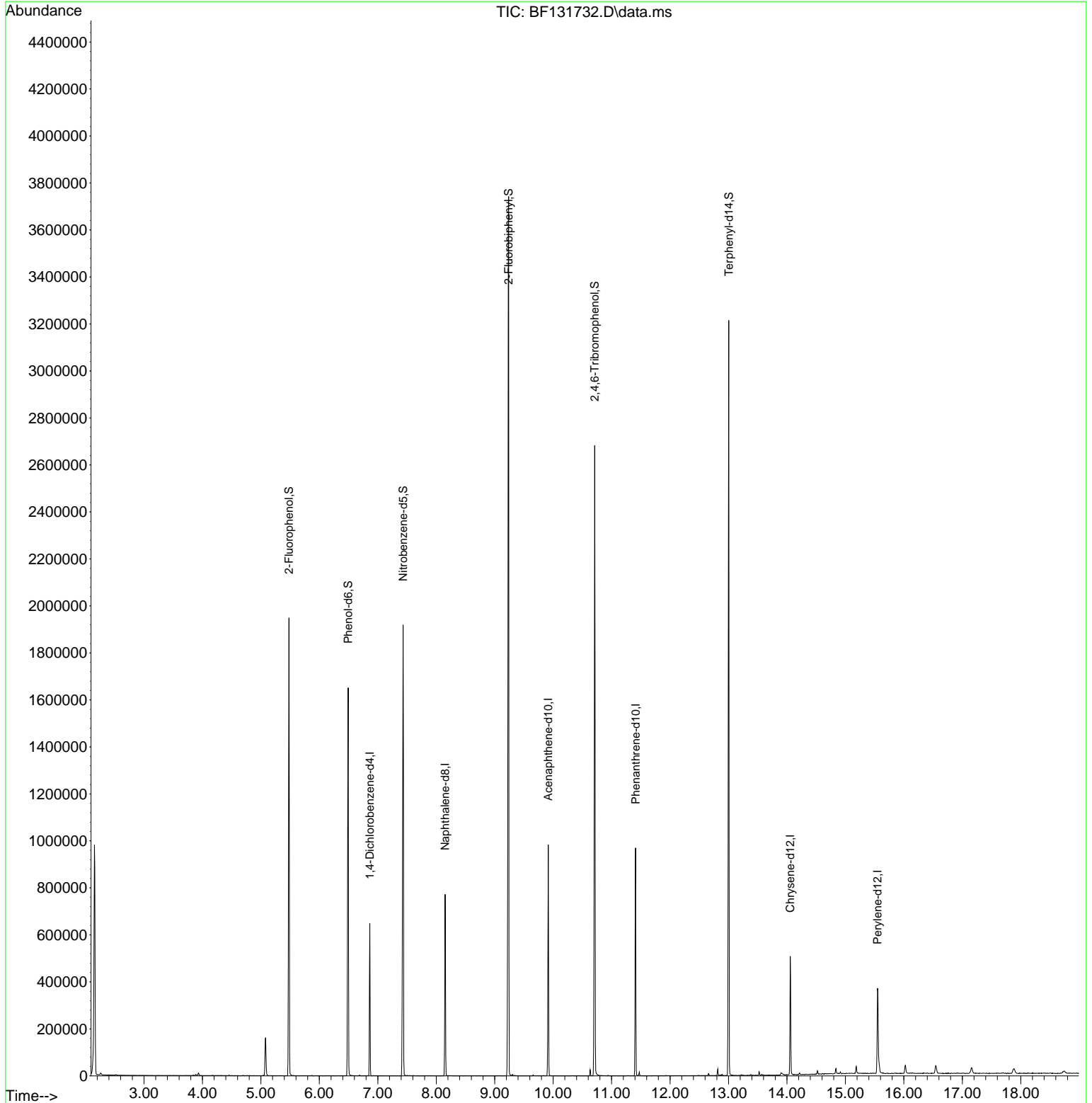
Target Compounds Qvalue

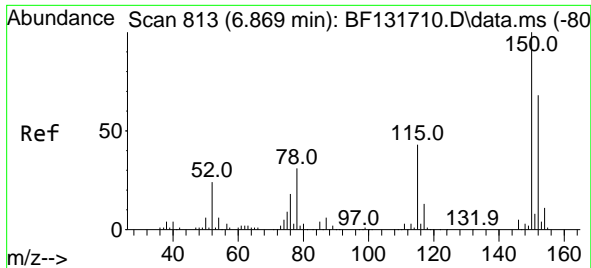
(#) = qualifier out of range (m) = manual integration (+) = signals summed

Data Path : Z:\svoasrv\HPCHEM1\BNA_F\Data\BF122022\
 Data File : BF131732.D
 Acq On : 21 Dec 2022 01:22
 Operator : CG\JU
 Sample : N6076-03
 Misc :
 ALS Vial : 17 Sample Multiplier: 1

Instrument :
 BNA_F
 ClientSampleId :
 MW-4

Quant Time: Dec 21 04:51:35 2022
 Quant Method : Z:\svoasrv\HPCHEM1\BNA_F\Methods\8270-BF122022.M
 Quant Title : ASP BNA STANDARDS FOR 5 POINT CALIBRATION
 QLast Update : Wed Dec 21 03:12:37 2022
 Response via : Initial Calibration

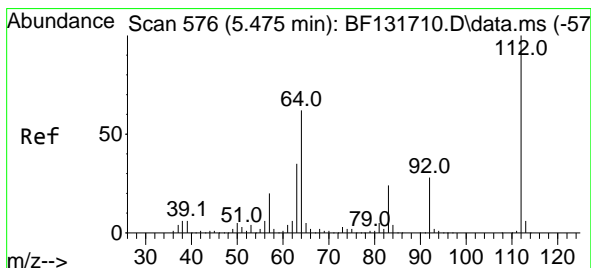
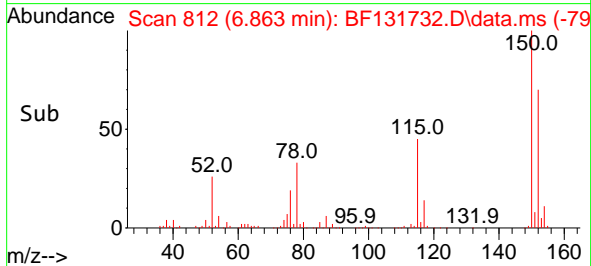
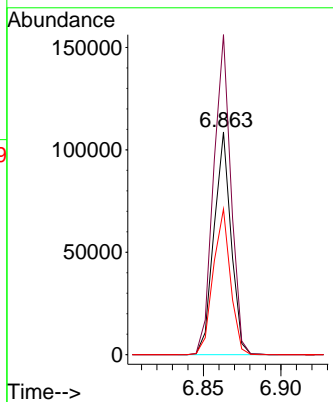
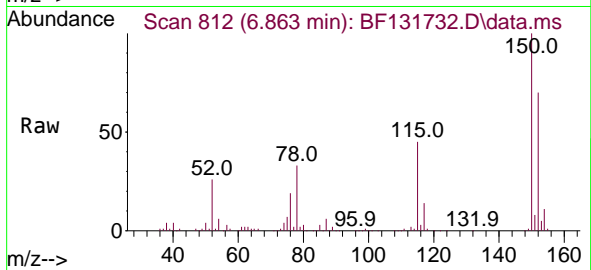




#1
 1,4-Dichlorobenzene-d4
 Concen: 20.000 ng
 RT: 6.863 min Scan# 811
 Delta R.T. -0.006 min
 Lab File: BF131732.D
 Acq: 21 Dec 2022 01:22

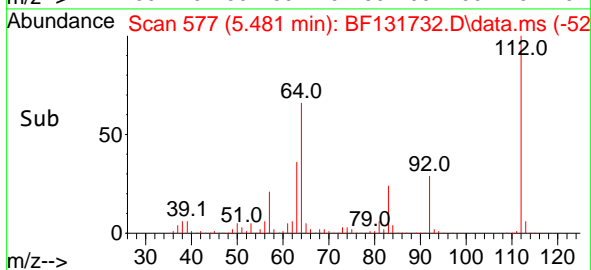
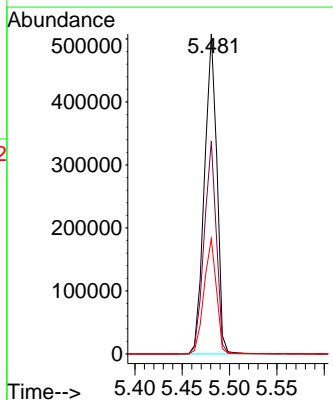
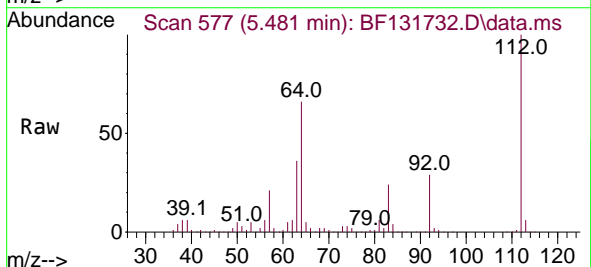
Instrument :
 BNA_F
 ClientSampleId :
 MW-4

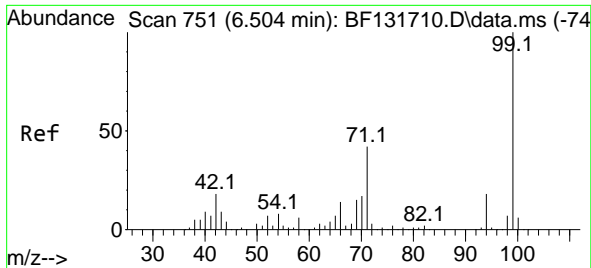
Tgt Ion:152 Resp: 83321
 Ion Ratio Lower Upper
 152 100
 150 143.7 117.4 176.0
 115 65.4 50.2 75.4



#5
 2-Fluorophenol
 Concen: 94.068 ng
 RT: 5.481 min Scan# 577
 Delta R.T. 0.006 min
 Lab File: BF131732.D
 Acq: 21 Dec 2022 01:22

Tgt Ion:112 Resp: 465459
 Ion Ratio Lower Upper
 112 100
 64 66.5 49.5 74.3
 63 36.0 28.2 42.2



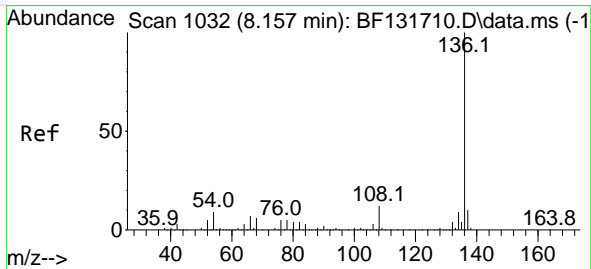
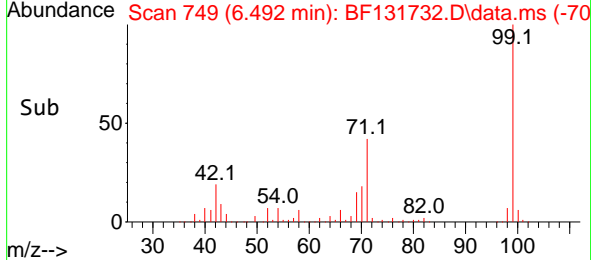
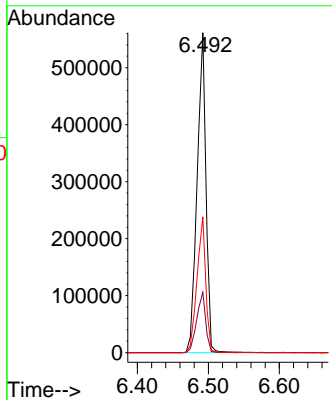
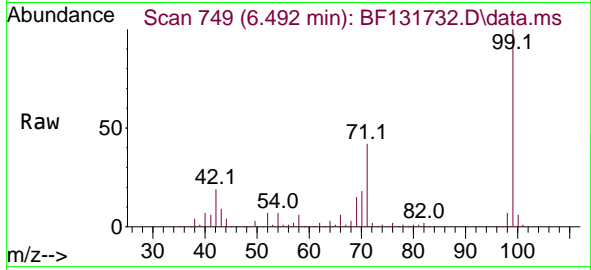


#7
 Phenol-d6
 Concen: 72.613 ng
 RT: 6.492 min Scan# 74
 Delta R.T. -0.012 min
 Lab File: BF131732.D
 Acq: 21 Dec 2022 01:22

Instrument : BNA_F
 Client SampleId : MW-4

Tgt Ion: 99 Resp: 483607

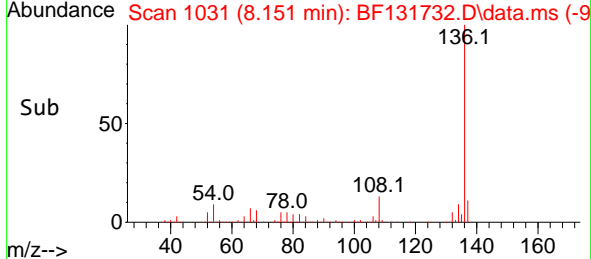
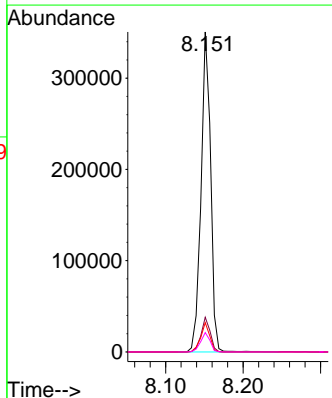
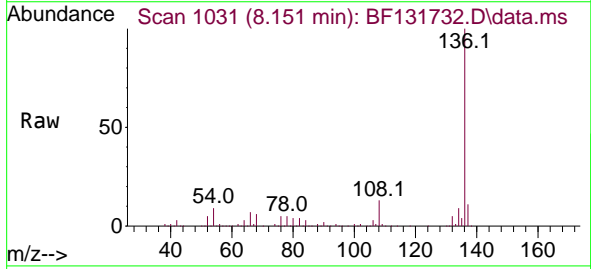
Ion	Ratio	Lower	Upper
99	100		
42	18.8	14.8	22.2
71	42.4	33.8	50.6

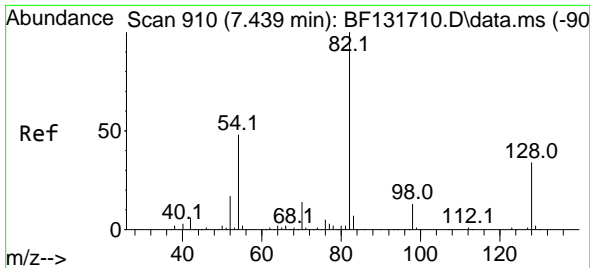


#21
 Naphthalene-d8
 Concen: 20.000 ng
 RT: 8.151 min Scan# 1031
 Delta R.T. -0.006 min
 Lab File: BF131732.D
 Acq: 21 Dec 2022 01:22

Tgt Ion: 136 Resp: 300877

Ion	Ratio	Lower	Upper
136	100		
137	10.8	8.4	12.6
54	9.1	7.2	10.8
68	6.0	5.0	7.6



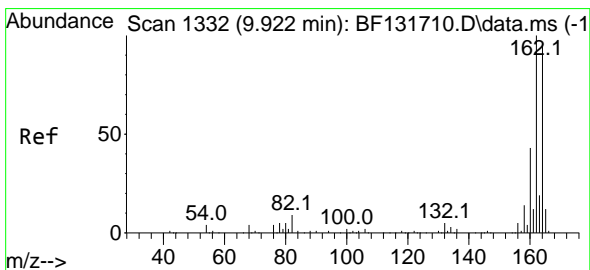
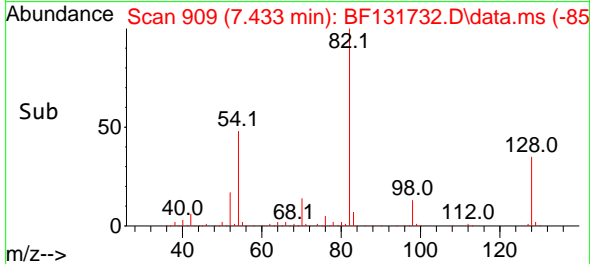
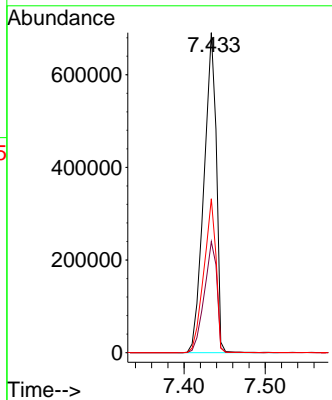
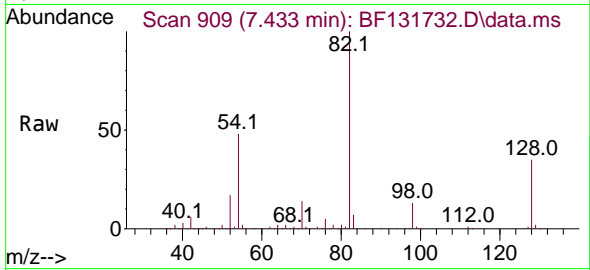


#23
 Nitrobenzene-d5
 Concen: 99.278 ng
 RT: 7.433 min Scan# 90
 Delta R.T. -0.006 min
 Lab File: BF131732.D
 Acq: 21 Dec 2022 01:22

Instrument :
 BNA_F
 ClientSampleId :
 MW-4

Tgt Ion: 82 Resp: 735793

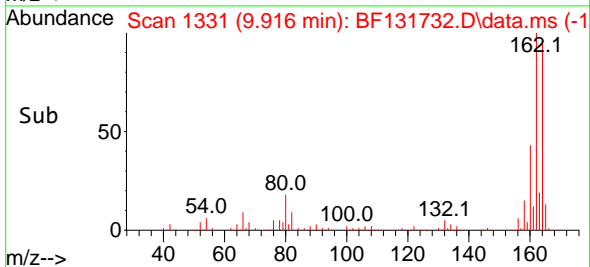
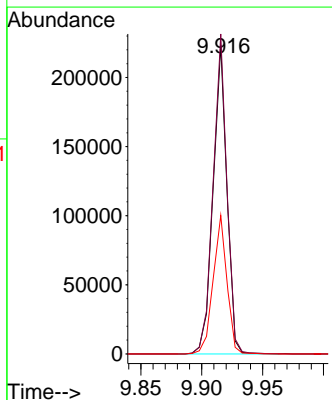
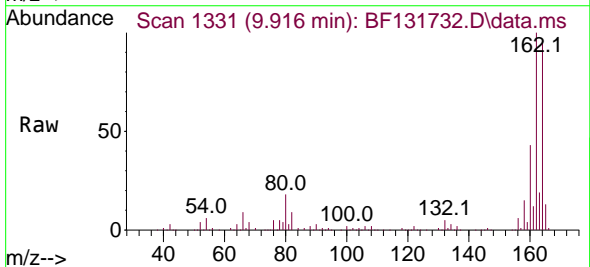
Ion	Ratio	Lower	Upper
82	100		
128	34.7	27.3	40.9
54	48.1	38.2	57.2

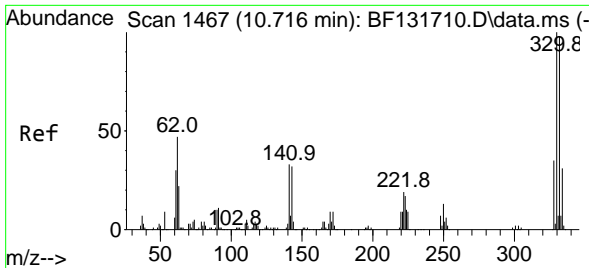


#39
 Acenaphthene-d10
 Concen: 20.000 ng
 RT: 9.916 min Scan# 1331
 Delta R.T. -0.006 min
 Lab File: BF131732.D
 Acq: 21 Dec 2022 01:22

Tgt Ion: 164 Resp: 175978

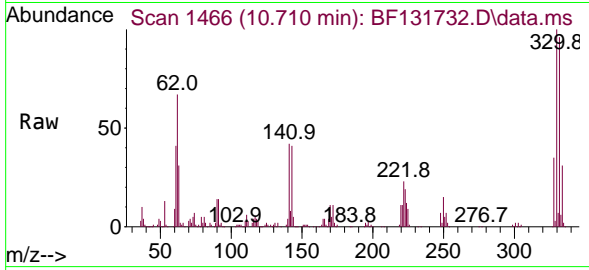
Ion	Ratio	Lower	Upper
164	100		
162	103.6	83.7	125.5
160	44.8	36.2	54.4



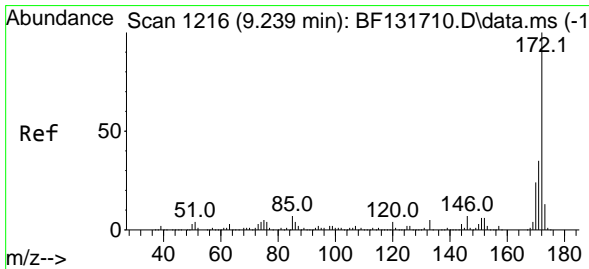
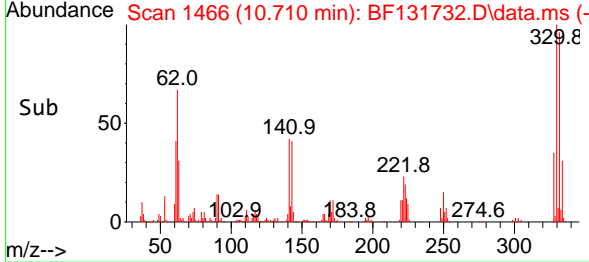
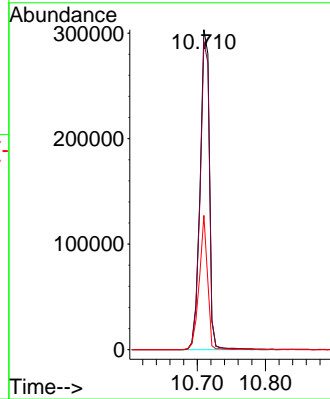


#42
 2,4,6-Tribromophenol
 Concen: 150.550 ng
 RT: 10.710 min Scan# 1466
 Delta R.T. -0.006 min
 Lab File: BF131732.D
 Acq: 21 Dec 2022 01:22

Instrument :
 BNA_F
 ClientSampleId :
 MW-4

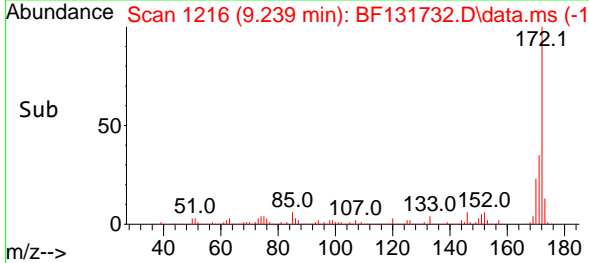
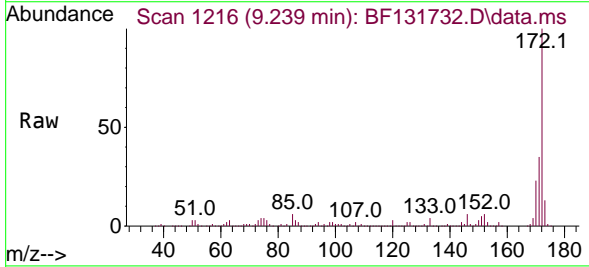
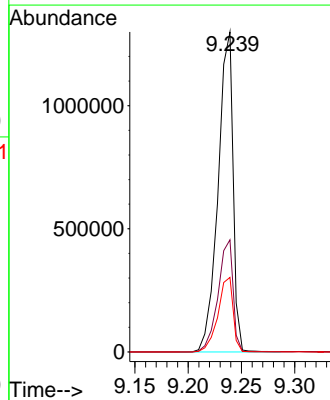


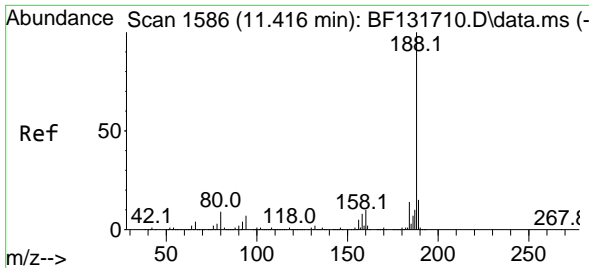
Tgt Ion:330 Resp: 289981
 Ion Ratio Lower Upper
 330 100
 332 96.3 77.1 115.7
 141 37.1 30.4 45.6



#45
 2-Fluorobiphenyl
 Concen: 101.673 ng
 RT: 9.239 min Scan# 1216
 Delta R.T. 0.000 min
 Lab File: BF131732.D
 Acq: 21 Dec 2022 01:22

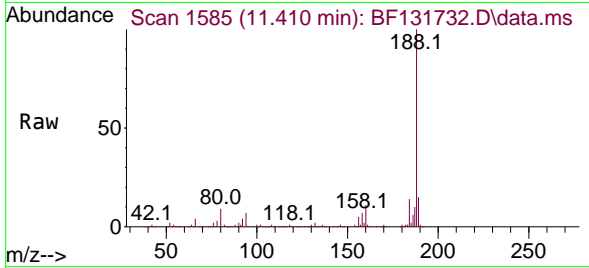
Tgt Ion:172 Resp: 1277265
 Ion Ratio Lower Upper
 172 100
 171 35.0 27.9 41.9
 170 23.3 19.0 28.4



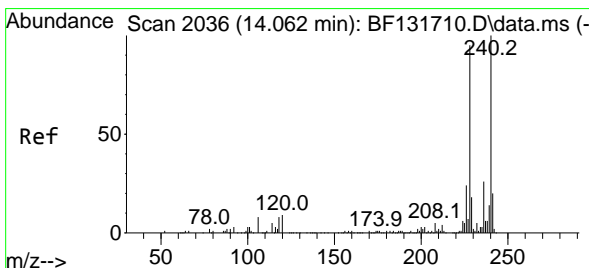
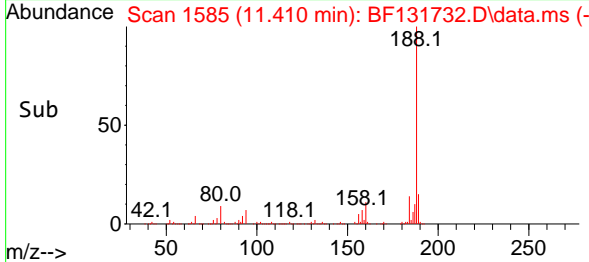
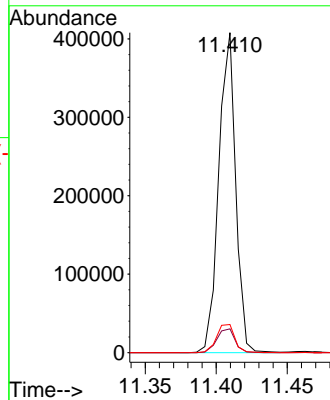


#64
 Phenanthrene-d10
 Concen: 20.000 ng
 RT: 11.410 min Scan# 11
 Delta R.T. -0.006 min
 Lab File: BF131732.D
 Acq: 21 Dec 2022 01:22

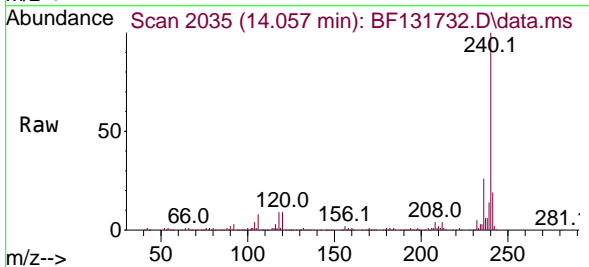
Instrument :
 BNA_F
 ClientSampleId :
 MW-4



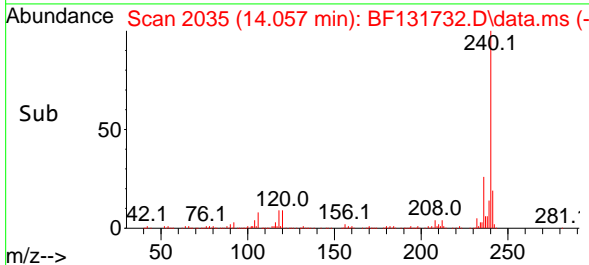
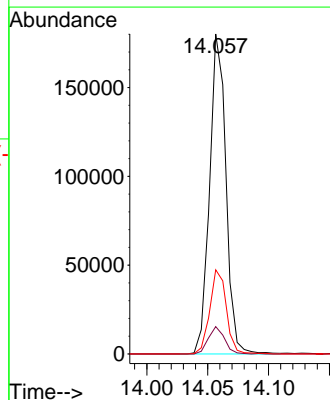
Tgt Ion:188 Resp: 338641
 Ion Ratio Lower Upper
 188 100
 94 7.4 5.9 8.9
 80 8.8 7.0 10.6

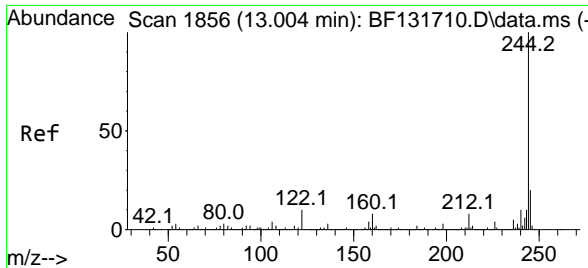


#76
 Chrysene-d12
 Concen: 20.000 ng
 RT: 14.057 min Scan# 2035
 Delta R.T. -0.006 min
 Lab File: BF131732.D
 Acq: 21 Dec 2022 01:22



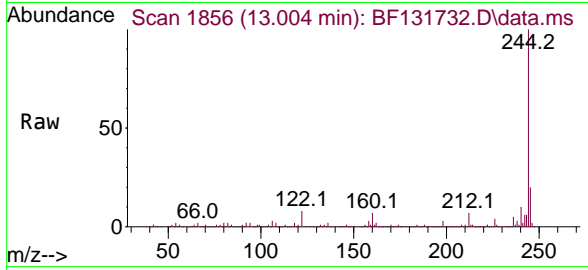
Tgt Ion:240 Resp: 168655
 Ion Ratio Lower Upper
 240 100
 120 8.5 7.6 11.4
 236 26.3 21.2 31.8



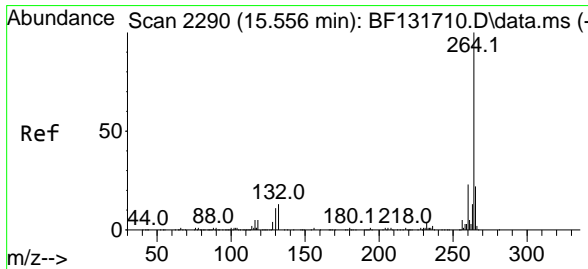
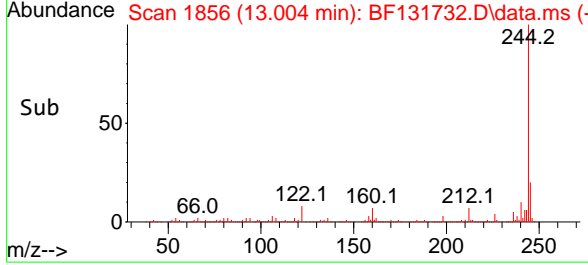
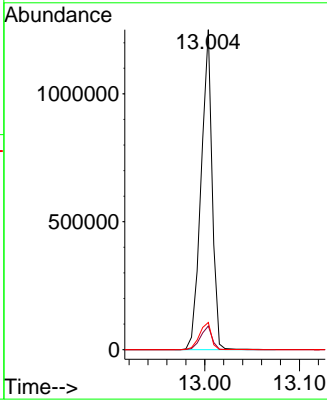


#79
 Terphenyl-d14
 Concen: 93.946 ng
 RT: 13.004 min Scan# 1856
 Delta R.T. -0.000 min
 Lab File: BF131732.D
 Acq: 21 Dec 2022 01:22

Instrument : BNA_F
 ClientSampleId : MW-4



Tgt Ion:244 Resp: 1016635
 Ion Ratio Lower Upper
 244 100
 212 7.4 6.5 9.7
 122 8.5 7.7 11.5



#86
 Perylene-d12
 Concen: 20.000 ng
 RT: 15.551 min Scan# 2289
 Delta R.T. -0.006 min
 Lab File: BF131732.D
 Acq: 21 Dec 2022 01:22

Tgt Ion:264 Resp: 173849
 Ion Ratio Lower Upper
 264 100
 260 24.1 18.6 28.0
 265 23.2 17.4 26.2

