

Data Path : Z:\svoasrv\HPCHEM1\BNA\_F\Data\BF122120\  
 Data File : BF122804.D  
 Acq On : 21 Dec 2020 17:14  
 Operator : JU/CG  
 Sample : L5160-02  
 Misc :  
 ALS Vial : 7 Sample Multiplier: 1

Instrument :  
 BNA\_F  
 ClientSampleId :  
 LLEXSITUTV-018-001-SO

Quant Time: Dec 21 17:46:42 2020  
 Quant Method : Z:\SVOASRV\HPCHEM1\BNA\_F\METHODS\8270-BF120520.M  
 Quant Title : ASP BNA STANDARDS FOR 5 POINT CALIBRATION  
 QLast Update : Tue Dec 15 18:14:23 2020  
 Response via : Initial Calibration

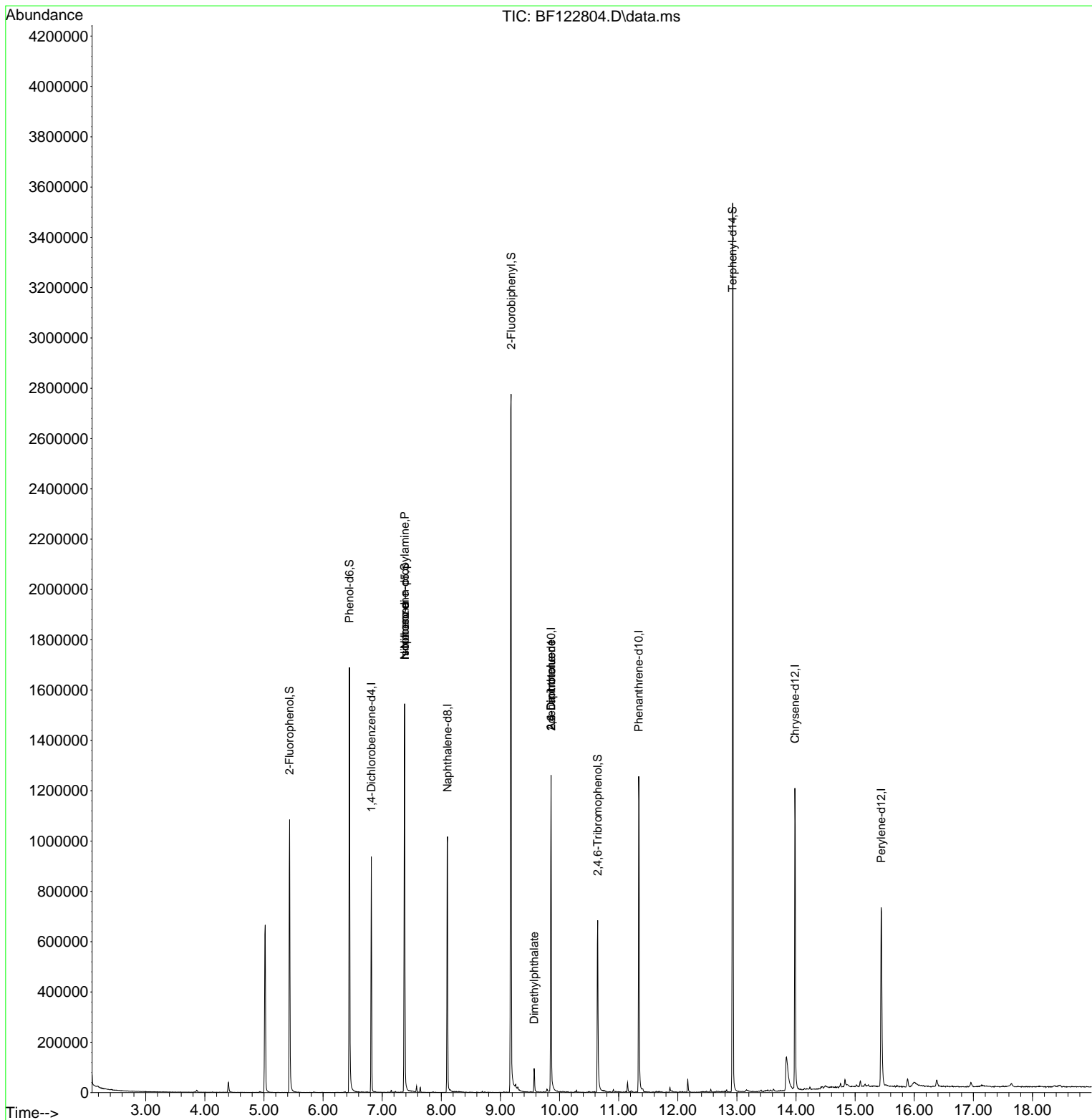
Compound	R.T.	QIon	Response	Conc	Units	Dev(Min)
Internal Standards						
1) 1,4-Dichlorobenzene-d4	6.816	152	132487	20.00	ng	0.00
21) Naphthalene-d8	8.104	136	516433	20.00	ng	0.00
39) Acenaphthene-d10	9.857	164	271235	20.00	ng	0.00
64) Phenanthrene-d10	11.339	188	527020	20.00	ng	0.00
76) Chrysene-d12	13.980	240	455386	20.00	ng	0.00
86) Perylene-d12	15.439	264	380253	20.00	ng	0.00
System Monitoring Compounds						
5) 2-Fluorophenol	5.434	112	328858	39.30	ng	0.00
7) Phenol-d6	6.445	99	577039	51.99	ng	-0.01
23) Nitrobenzene-d5	7.380	82	518813	50.33	ng	-0.01
42) 2,4,6-Tribromophenol	10.645	330	112339	31.64	ng	0.00
45) 2-Fluorobiphenyl	9.180	172	1040247	51.87	ng	0.00
79) Terphenyl-d14	12.927	244	1259484	48.41	ng	0.00
Target Compounds						
19) n-Nitroso-di-n-propyla...	7.380	70	66932	10.53	ng	# 76
25) Isophorone	7.380	82	518810	29.22	ng	# 65
50) Dimethylphthalate	9.569	163	45842	2.12	ng	96
51) 2,6-Dinitrotoluene	9.857	165	34174	7.47	ng	# 31
57) 2,4-Dinitrotoluene	9.857	165	34509	5.66	ng	# 25

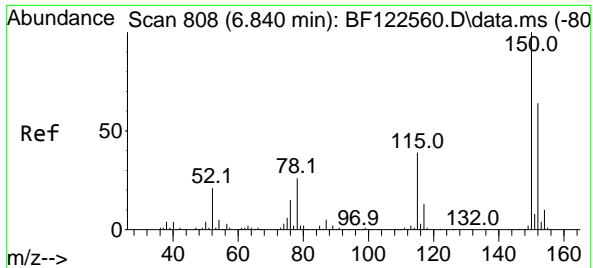
(#) = qualifier out of range (m) = manual integration (+) = signals summed

Data Path : Z:\svoasrv\HPCHEM1\BNA\_F\Data\BF122120\  
 Data File : BF122804.D  
 Acq On : 21 Dec 2020 17:14  
 Operator : JU/CG  
 Sample : L5160-02  
 Misc :  
 ALS Vial : 7 Sample Multiplier: 1

Instrument :  
 BNA\_F  
 ClientSampleId :  
 LLEXSITUTV-018-001-SO

Quant Time: Dec 21 17:46:42 2020  
 Quant Method : Z:\SVOASRV\HPCHEM1\BNA\_F\METHODS\8270-BF120520.M  
 Quant Title : ASP BNA STANDARDS FOR 5 POINT CALIBRATION  
 QLast Update : Tue Dec 15 18:14:23 2020  
 Response via : Initial Calibration

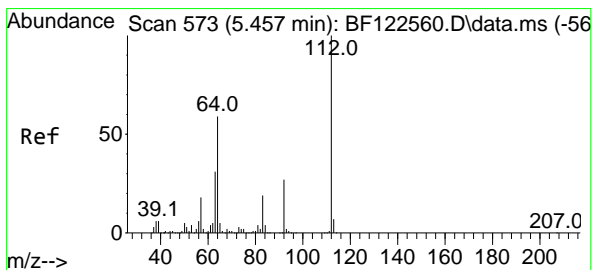
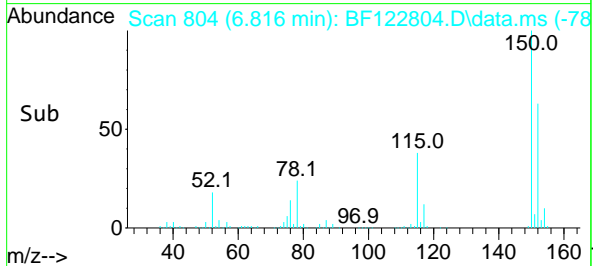
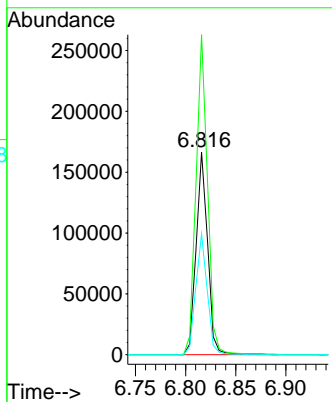
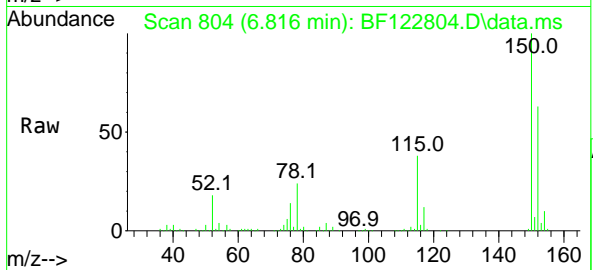




#1  
 1,4-Dichlorobenzene-d4  
 Concen: 20.00 ng  
 RT: 6.816 min Scan# 804  
 Delta R.T. -0.006 min  
 Lab File: BF122804.D  
 Acq: 21 Dec 2020 17:14

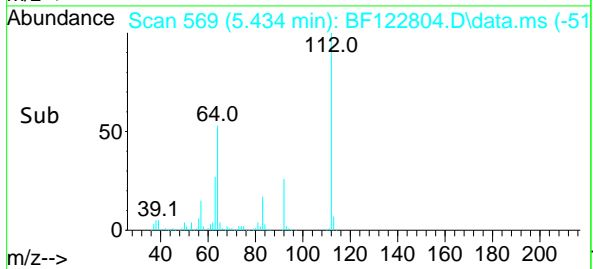
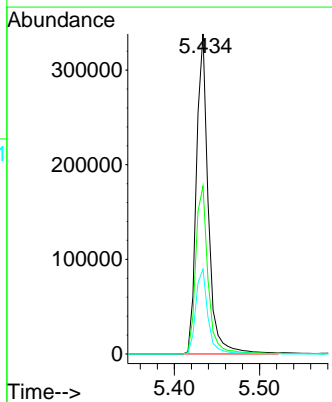
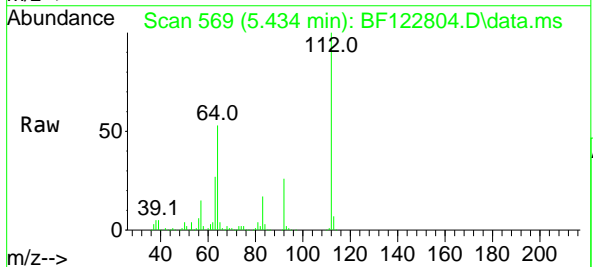
**Instrument :**  
 BNA\_F  
**ClientSampleId :**  
 LLEXSITUTV-018-001-SO

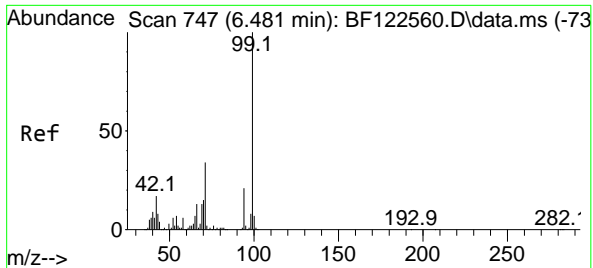
Tgt Ion:152 Resp: 132487  
 Ion Ratio Lower Upper  
 152 100  
 150 158.0 125.8 188.6  
 115 59.6 49.3 73.9



#5  
 2-Fluorophenol  
 Concen: 39.30 ng  
 RT: 5.434 min Scan# 569  
 Delta R.T. -0.000 min  
 Lab File: BF122804.D  
 Acq: 21 Dec 2020 17:14

Tgt Ion:112 Resp: 328858  
 Ion Ratio Lower Upper  
 112 100  
 64 52.5 46.9 70.3  
 63 26.5 24.5 36.7



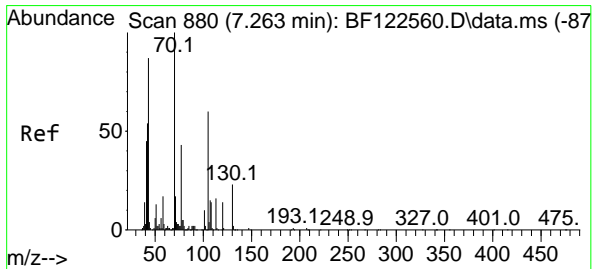
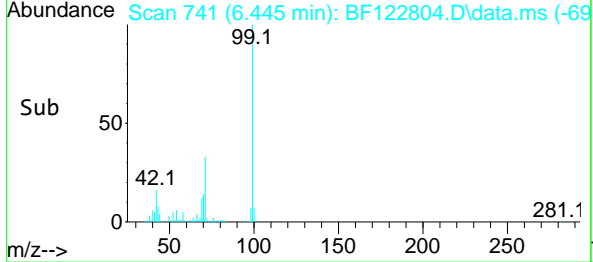
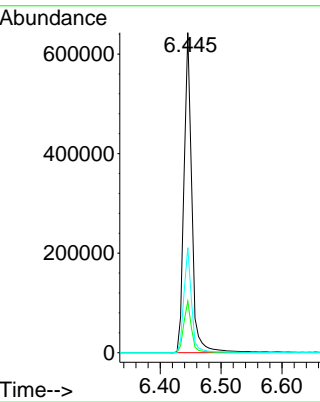
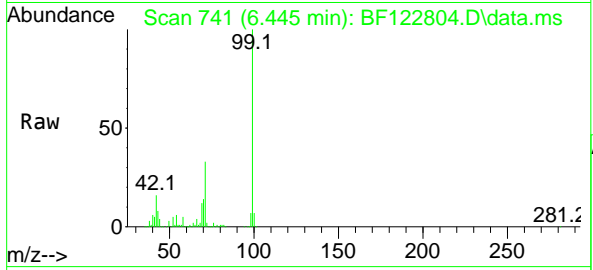


#7  
 Phenol-d6  
 Concen: 51.99 ng  
 RT: 6.445 min Scan# 741  
 Delta R.T. -0.012 min  
 Lab File: BF122804.D  
 Acq: 21 Dec 2020 17:14

**Instrument :**  
 BNA\_F  
**ClientSampleId :**  
 LLEXSITUTV-018-001-SO

Tgt Ion: 99 Resp: 577039

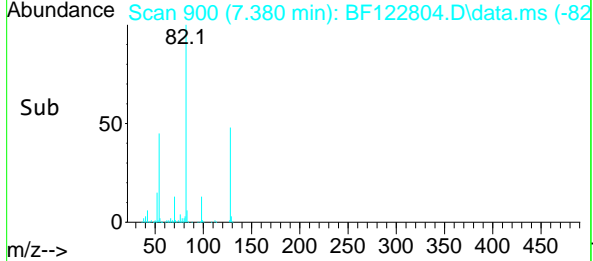
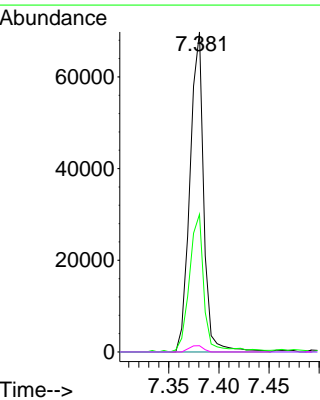
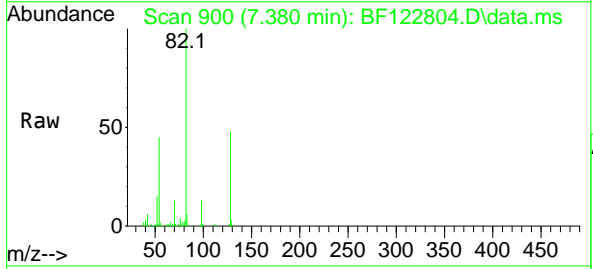
Ion	Ratio	Lower	Upper
99	100		
42	16.1	13.8	20.6
71	32.8	26.9	40.3

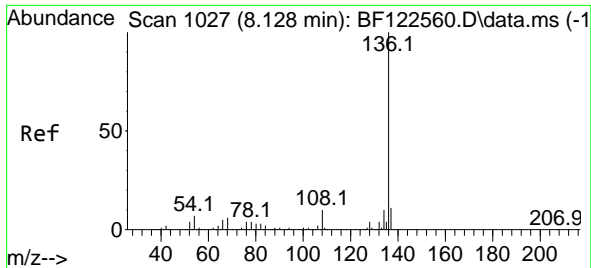


#19  
 n-Nitroso-di-n-propylamine  
 Concen: 10.53 ng  
 RT: 7.380 min Scan# 900  
 Delta R.T. 0.141 min  
 Lab File: BF122804.D  
 Acq: 21 Dec 2020 17:14

Tgt Ion: 70 Resp: 66932

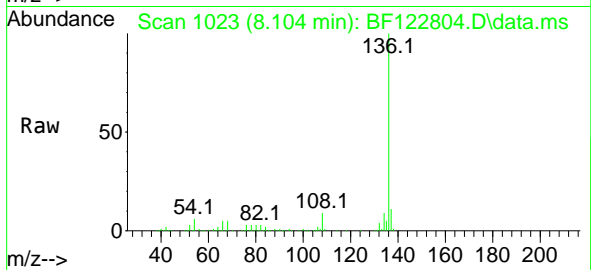
Ion	Ratio	Lower	Upper
70	100		
42	43.0	43.0	64.4
101	0.0	7.9	11.9#
130	1.9	18.5	27.7#





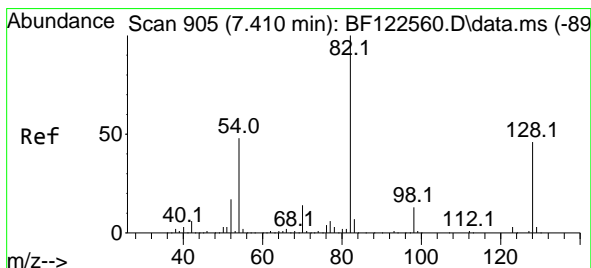
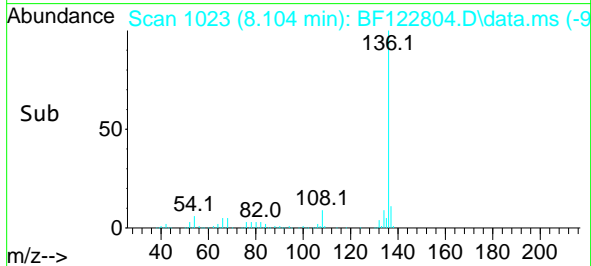
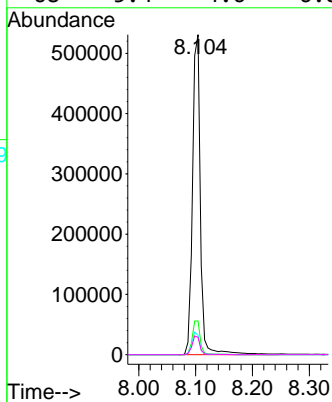
#21  
 Naphthalene-d8  
 Concen: 20.00 ng  
 RT: 8.104 min Scan# 1023  
 Delta R.T. -0.006 min  
 Lab File: BF122804.D  
 Acq: 21 Dec 2020 17:14

Instrument :  
 BNA\_F  
 ClientSampleId :  
 LLEXSITUTV-018-001-SO

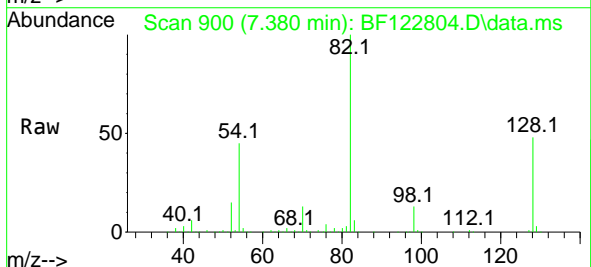


Tgt Ion:136 Resp: 516433

Ion	Ratio	Lower	Upper
136	100		
137	10.6	8.8	13.2
54	6.1	5.5	8.3
68	5.4	4.6	6.8

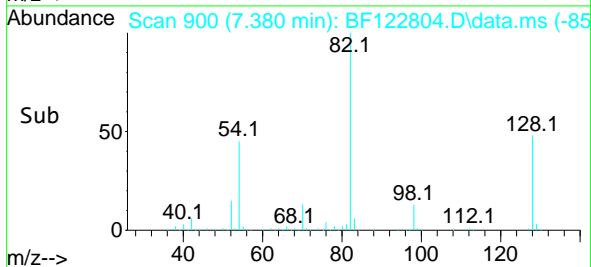
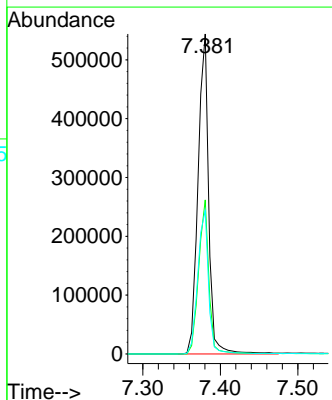


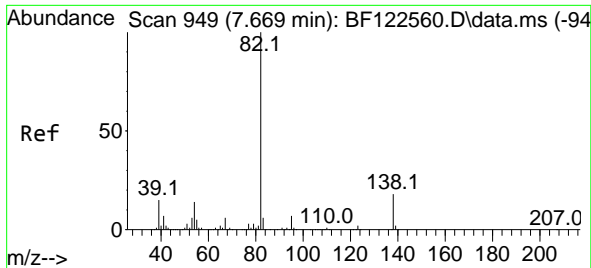
#23  
 Nitrobenzene-d5  
 Concen: 50.33 ng  
 RT: 7.380 min Scan# 900  
 Delta R.T. -0.012 min  
 Lab File: BF122804.D  
 Acq: 21 Dec 2020 17:14



Tgt Ion: 82 Resp: 518813

Ion	Ratio	Lower	Upper
82	100		
128	48.2	37.0	55.4
54	44.9	38.4	57.6

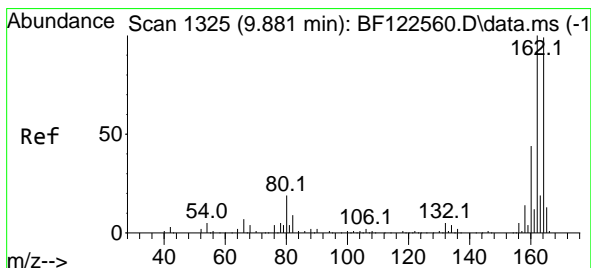
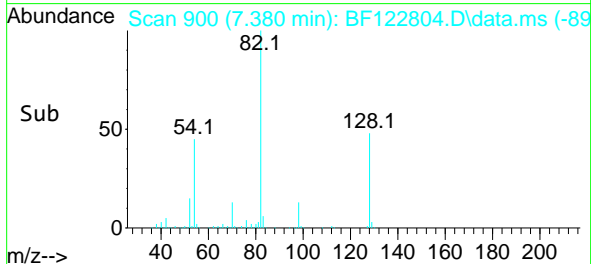
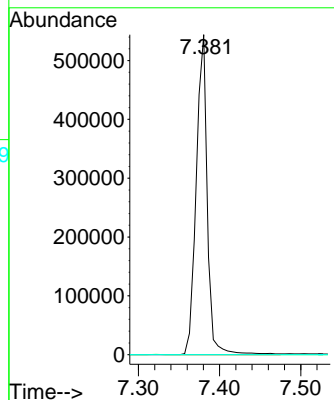
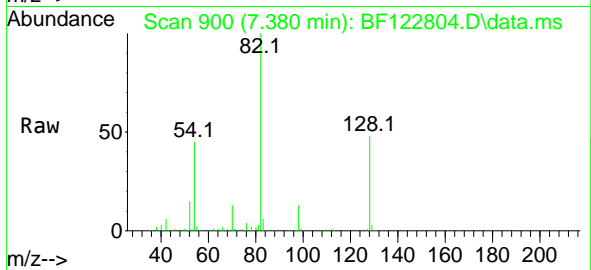




#25  
 Isophorone  
 Concen: 29.22 ng  
 RT: 7.380 min Scan# 900  
 Delta R.T. -0.265 min  
 Lab File: BF122804.D  
 Acq: 21 Dec 2020 17:14

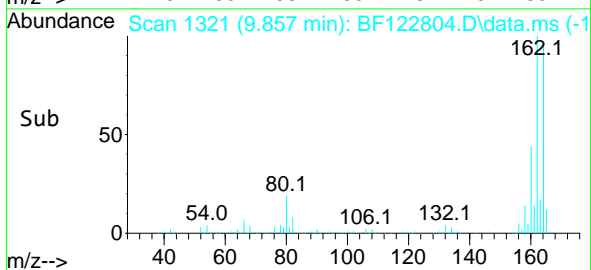
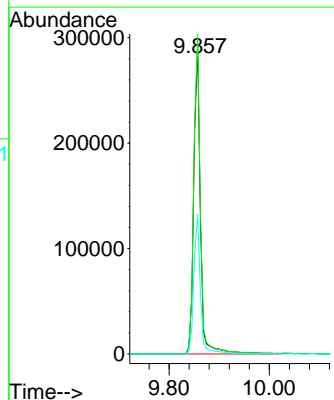
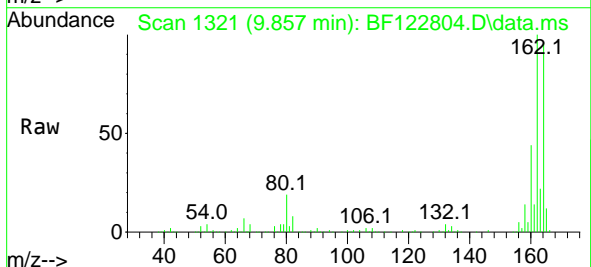
Instrument :  
 BNA\_F  
 ClientSampleId :  
 LLEXSITUTV-018-001-SO

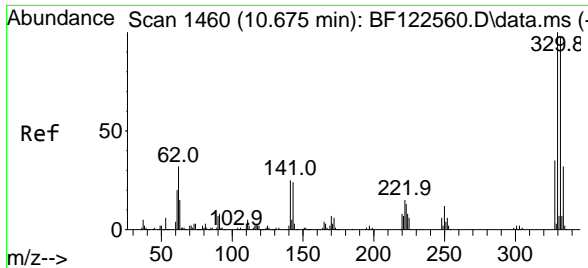
Tgt Ion: 82 Resp: 518810  
 Ion Ratio Lower Upper  
 82 100  
 95 0.0 5.8 8.6#  
 138 0.0 14.6 21.8#



#39  
 Acenaphthene-d10  
 Concen: 20.00 ng  
 RT: 9.857 min Scan# 1321  
 Delta R.T. -0.006 min  
 Lab File: BF122804.D  
 Acq: 21 Dec 2020 17:14

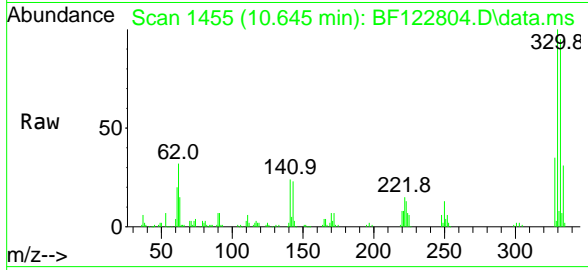
Tgt Ion:164 Resp: 271235  
 Ion Ratio Lower Upper  
 164 100  
 162 103.7 80.8 121.2  
 160 45.3 35.4 53.0



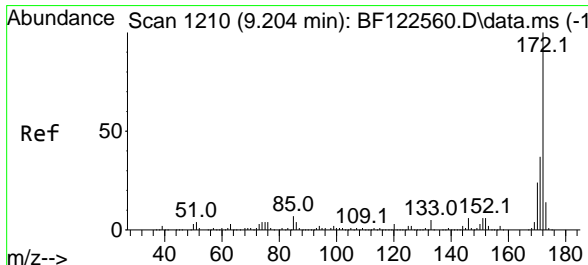
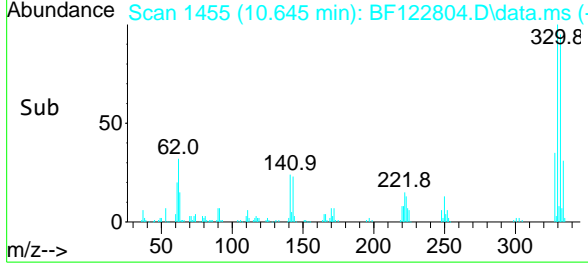
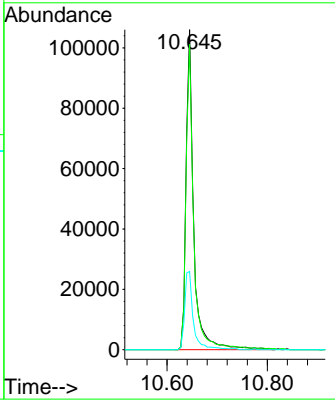


#42  
 2,4,6-Tribromophenol  
 Concen: 31.64 ng  
 RT: 10.645 min Scan# 1455  
 Delta R.T. -0.006 min  
 Lab File: BF122804.D  
 Acq: 21 Dec 2020 17:14

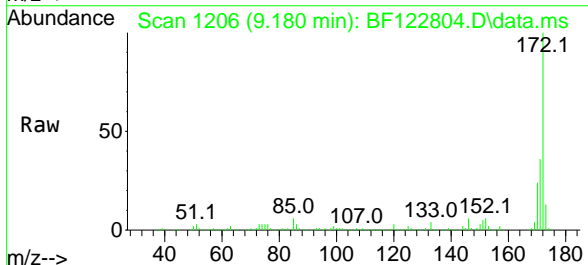
Instrument :  
 BNA\_F  
 ClientSampleId :  
 LLEXSITUTV-018-001-SO



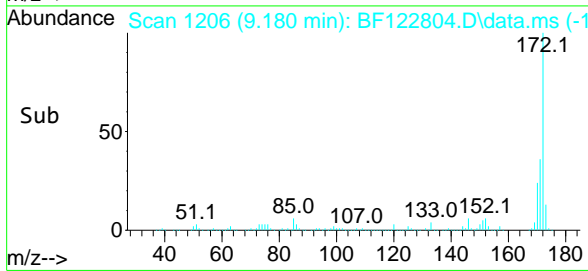
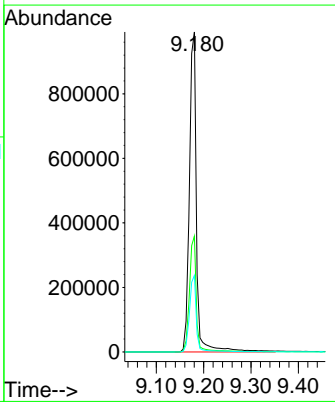
Tgt Ion:330 Resp: 112339  
 Ion Ratio Lower Upper  
 330 100  
 332 96.6 77.5 116.3  
 141 27.9 23.8 35.8

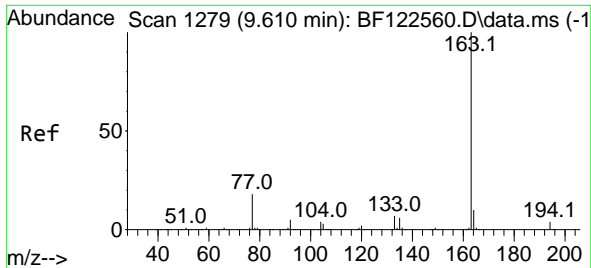


#45  
 2-Fluorobiphenyl  
 Concen: 51.87 ng  
 RT: 9.180 min Scan# 1206  
 Delta R.T. -0.006 min  
 Lab File: BF122804.D  
 Acq: 21 Dec 2020 17:14



Tgt Ion:172 Resp: 1040247  
 Ion Ratio Lower Upper  
 172 100  
 171 36.2 29.6 44.4  
 170 23.9 19.5 29.3

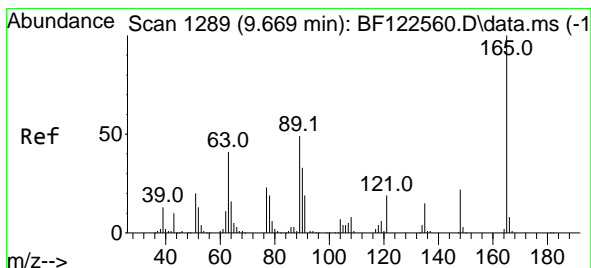
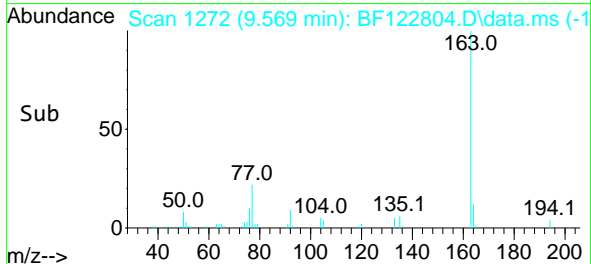
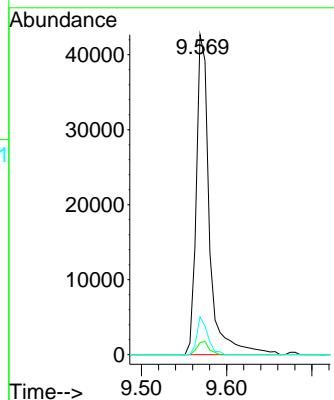
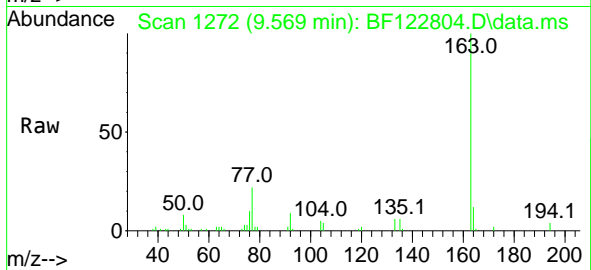




#50  
 Dimethylphthalate  
 Concen: 2.12 ng  
 RT: 9.569 min Scan# 1272  
 Delta R.T. -0.018 min  
 Lab File: BF122804.D  
 Acq: 21 Dec 2020 17:14

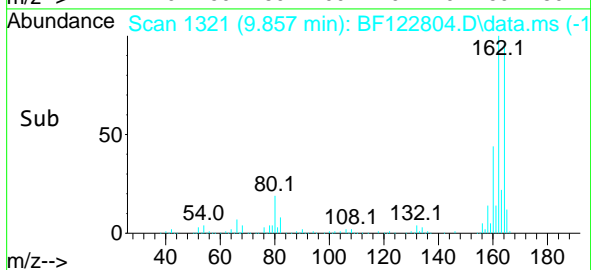
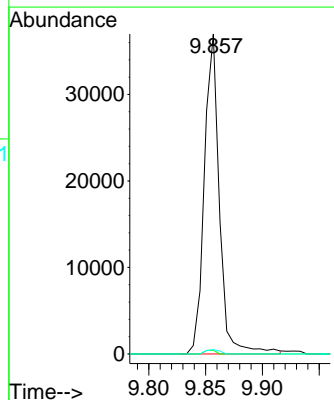
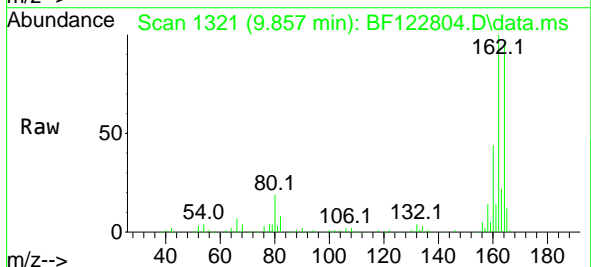
Instrument :  
 BNA\_F  
 ClientSampleId :  
 LLEXSITUTV-018-001-SO

Tgt Ion:163 Resp: 45842  
 Ion Ratio Lower Upper  
 163 100  
 194 3.8 3.4 5.0  
 164 11.8 8.1 12.1

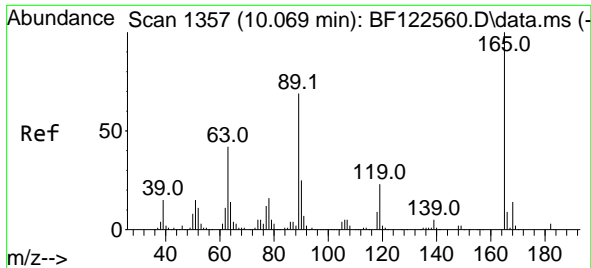


#51  
 2,6-Dinitrotoluene  
 Concen: 7.47 ng  
 RT: 9.857 min Scan# 1321  
 Delta R.T. 0.211 min  
 Lab File: BF122804.D  
 Acq: 21 Dec 2020 17:14

Tgt Ion:165 Resp: 34174  
 Ion Ratio Lower Upper  
 165 100  
 63 1.2 36.6 55.0#  
 89 1.4 39.4 59.0#



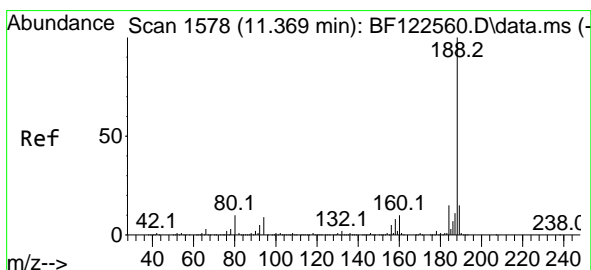
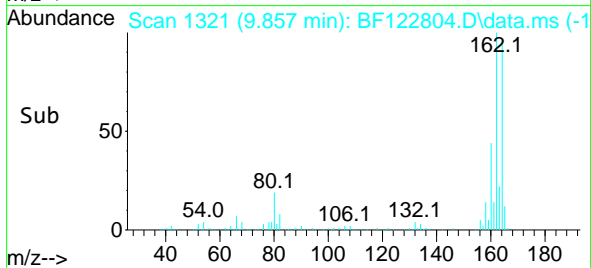
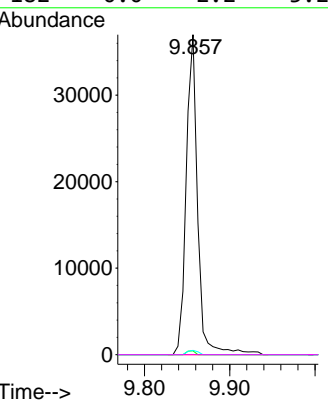
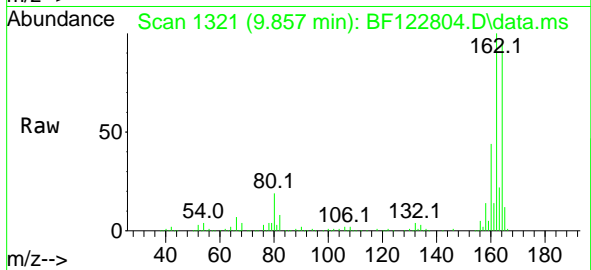




#57  
 2,4-Dinitrotoluene  
 Concen: 5.66 ng  
 RT: 9.857 min Scan# 1321  
 Delta R.T. -0.194 min  
 Lab File: BF122804.D  
 Acq: 21 Dec 2020 17:14

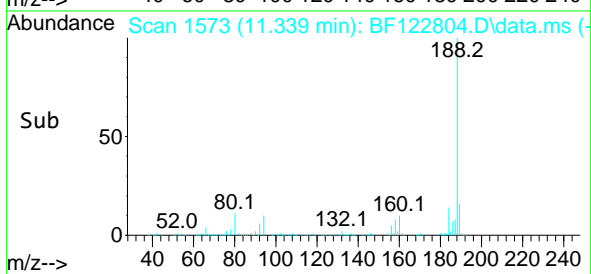
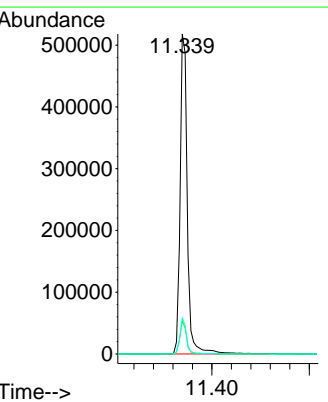
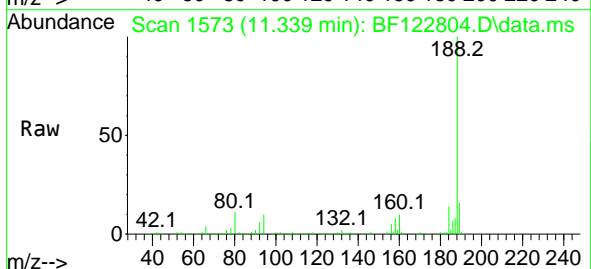
**Instrument :**  
 BNA\_F  
**ClientSampleId :**  
 LLEXSITUTV-018-001-SO

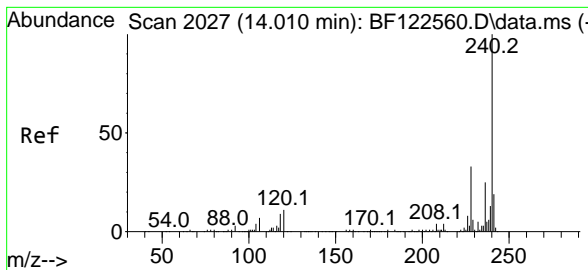
Tgt Ion	Resp	Lower	Upper
165	100		
63	1.2	34.3	51.5#
89	1.4	55.2	82.8#
182	0.0	2.2	3.2#



#64  
 Phenanthrene-d10  
 Concen: 20.00 ng  
 RT: 11.339 min Scan# 1573  
 Delta R.T. -0.006 min  
 Lab File: BF122804.D  
 Acq: 21 Dec 2020 17:14

Tgt Ion	Resp	Lower	Upper
188	100		
94	10.4	7.4	11.2
80	11.2	8.2	12.4



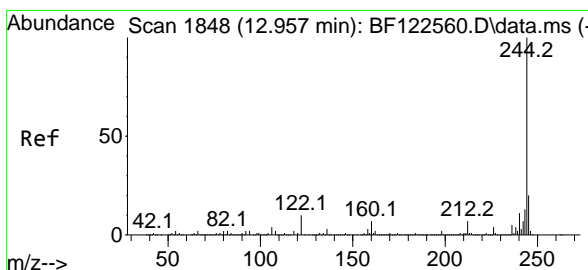
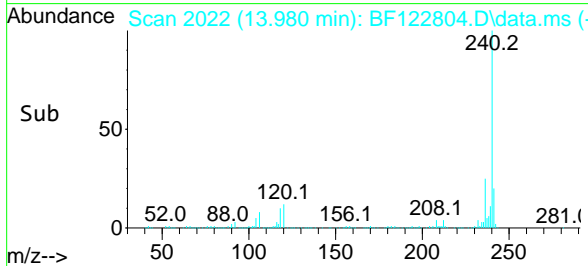
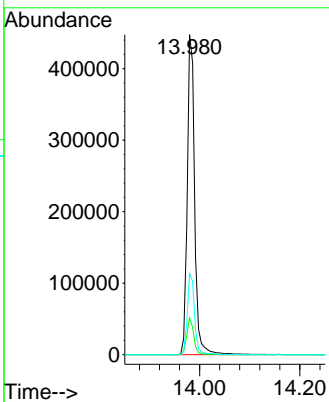
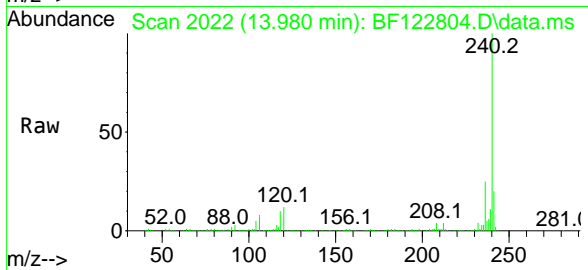


#76  
 Chrysene-d12  
 Concen: 20.00 ng  
 RT: 13.980 min Scan# 2022  
 Delta R.T. -0.006 min  
 Lab File: BF122804.D  
 Acq: 21 Dec 2020 17:14

**Instrument :**  
 BNA\_F  
**ClientSampleId :**  
 LLEXSITUTV-018-001-SO

Tgt Ion:240 Resp: 455386

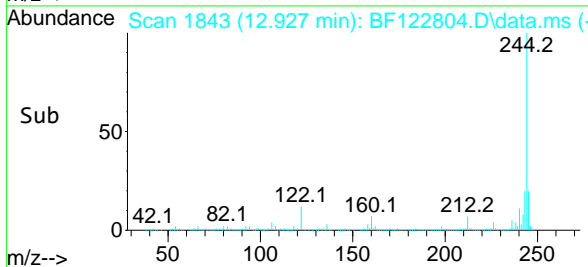
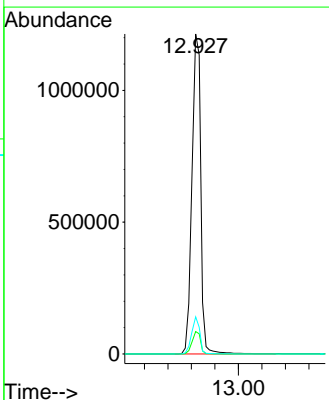
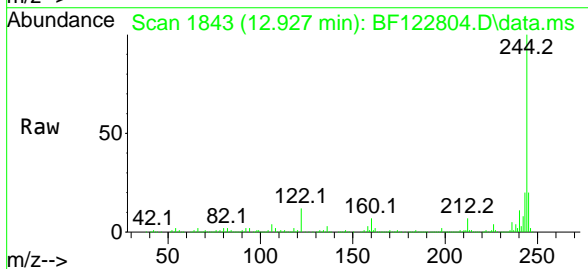
Ion	Ratio	Lower	Upper
240	100		
120	11.5	8.6	12.8
236	25.4	20.3	30.5

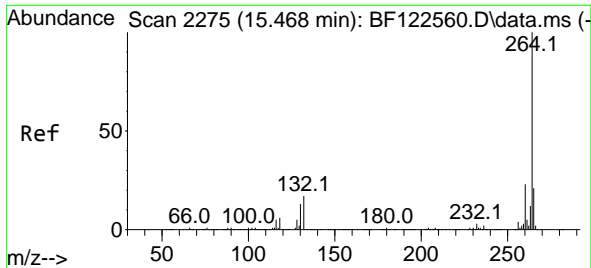


#79  
 Terphenyl-d14  
 Concen: 48.41 ng  
 RT: 12.927 min Scan# 1843  
 Delta R.T. -0.006 min  
 Lab File: BF122804.D  
 Acq: 21 Dec 2020 17:14

Tgt Ion:244 Resp: 1259484

Ion	Ratio	Lower	Upper
244	100		
212	7.0	5.7	8.5
122	11.6	8.3	12.5





#86  
 Perylene-d12  
 Concen: 20.00 ng  
 RT: 15.439 min Scan# 2270  
 Delta R.T. -0.000 min  
 Lab File: BF122804.D  
 Acq: 21 Dec 2020 17:14

**Instrument :**  
 BNA\_F  
**ClientSampleId :**  
 LLEXSITUTV-018-001-SO

Tgt Ion:264 Resp: 380253

Ion	Ratio	Lower	Upper
264	100		
260	22.9	18.6	28.0
265	20.6	17.0	25.6

