

Data Path : Z:\svoasrv\HPCHEM1\BNA_F\Data\BF122122\
 Data File : BF131759.D
 Acq On : 21 Dec 2022 22:32
 Operator : CG\JU
 Sample : N6129-02
 Misc :
 ALS Vial : 13 Sample Multiplier: 1

Instrument :
 BNA_F
 ClientSampleId :
 C3

Quant Time: Dec 22 05:51:20 2022
 Quant Method : Z:\svoasrv\HPCHEM1\BNA_F\Methods\8270-BF122022.M
 Quant Title : ASP BNA STANDARDS FOR 5 POINT CALIBRATION
 QLast Update : Wed Dec 21 03:12:37 2022
 Response via : Initial Calibration

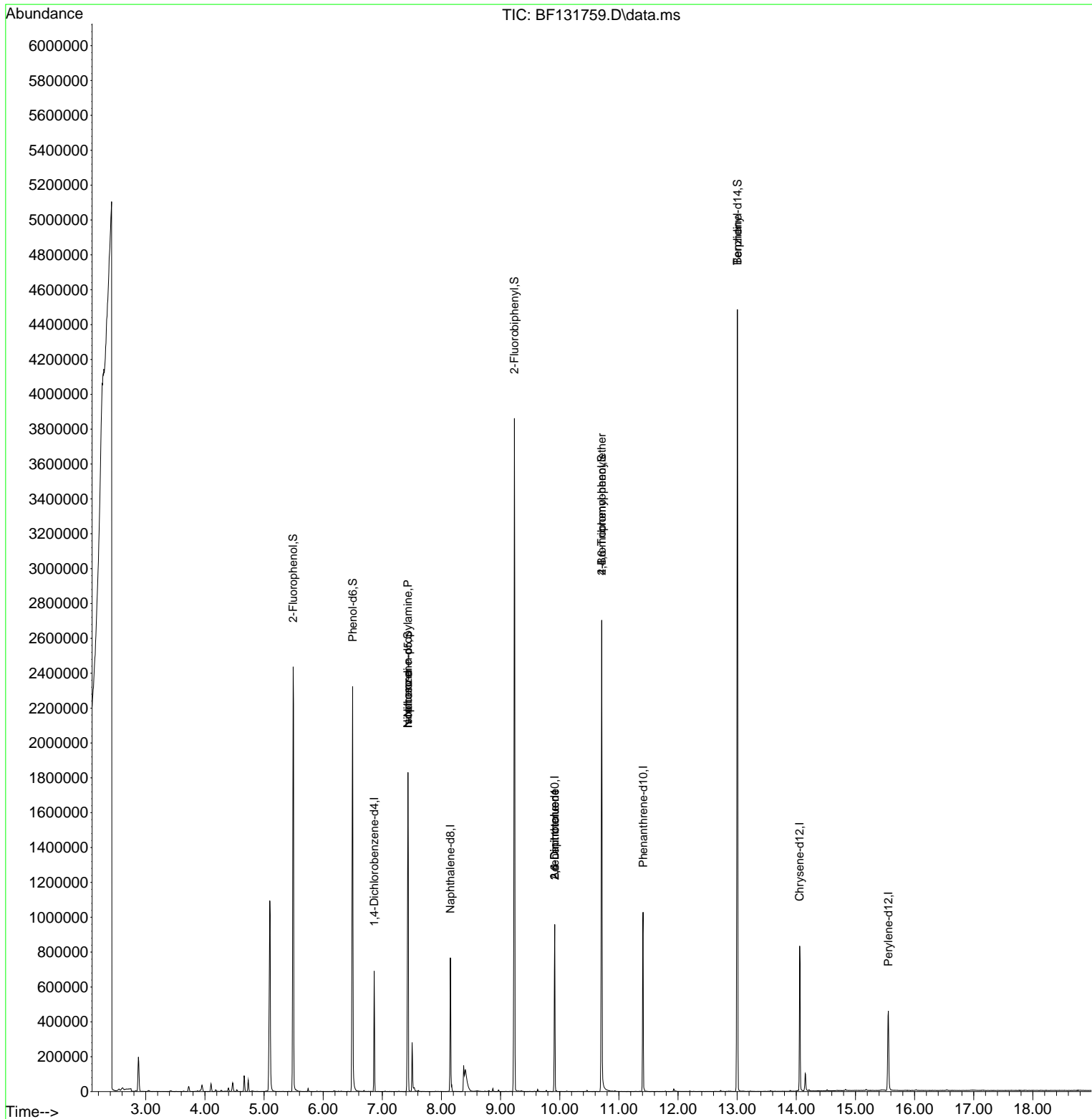
Compound	R.T.	QIon	Response	Conc	Units	Dev(Min)
Internal Standards						
1) 1,4-Dichlorobenzene-d4	6.863	152	84376	20.000	ng	0.00
21) Naphthalene-d8	8.151	136	306208	20.000	ng	0.00
39) Acenaphthene-d10	9.916	164	182848	20.000	ng	0.00
64) Phenanthrene-d10	11.410	188	369617	20.000	ng	0.00
76) Chrysene-d12	14.057	240	280457	20.000	ng	0.00
86) Perylene-d12	15.557	264	234354	20.000	ng	0.00
System Monitoring Compounds						
5) 2-Fluorophenol	5.493	112	687787	137.261	ng	0.02
7) Phenol-d6	6.498	99	813030	120.549	ng	0.00
23) Nitrobenzene-d5	7.434	82	699219	92.701	ng	0.00
42) 2,4,6-Tribromophenol	10.710	330	316140	157.964	ng	0.00
45) 2-Fluorobiphenyl	9.233	172	1225051	93.853	ng	0.00
79) Terphenyl-d14	13.004	244	1661505	92.331	ng	0.00
Target Compounds						
9) Benzaldehyde	6.422	77	327	Below Cal	#	65
19) n-Nitroso-di-n-propyla...	7.434	70	98291	20.207	ng	# 80
25) Isophorone	7.434	82	697818	54.476	ng	# 70
51) 2,6-Dinitrotoluene	9.916	165	23157	7.828	ng	# 19
57) 2,4-Dinitrotoluene	9.916	165	23157	5.825	ng	# 18
67) 4-Bromophenyl-phenylether	10.710	248	20784	4.761	ng	# 1
77) Benzidine	13.004	184	24803	4.823	ng	# 90

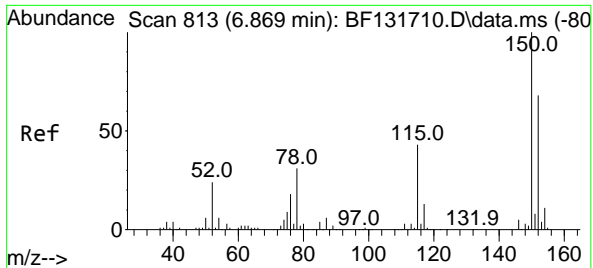
(#) = qualifier out of range (m) = manual integration (+) = signals summed

Data Path : Z:\svoasrv\HPCHEM1\BNA_F\Data\BF122122\
 Data File : BF131759.D
 Acq On : 21 Dec 2022 22:32
 Operator : CG\JU
 Sample : N6129-02
 Misc :
 ALS Vial : 13 Sample Multiplier: 1

Instrument :
 BNA_F
 ClientSampleId :
 C3

Quant Time: Dec 22 05:51:20 2022
 Quant Method : Z:\svoasrv\HPCHEM1\BNA_F\Methods\8270-BF122022.M
 Quant Title : ASP BNA STANDARDS FOR 5 POINT CALIBRATION
 QLast Update : Wed Dec 21 03:12:37 2022
 Response via : Initial Calibration



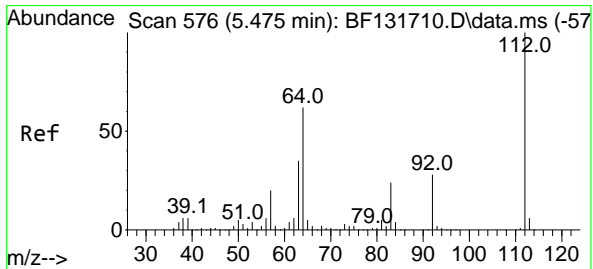
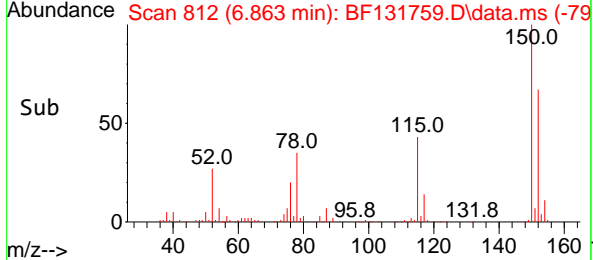
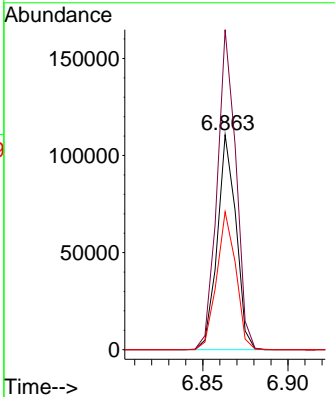
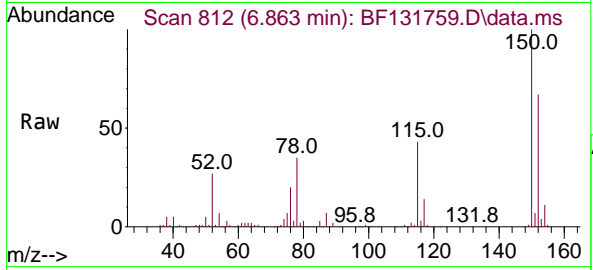


#1
 1,4-Dichlorobenzene-d4
 Concen: 20.000 ng
 RT: 6.863 min Scan# 81
 Delta R.T. -0.006 min
 Lab File: BF131759.D
 Acq: 21 Dec 2022 22:32

Instrument :
 BNA_F
 ClientSampleId :
 C3

Tgt Ion:152 Resp: 84376

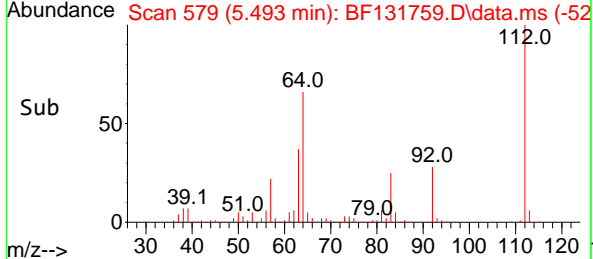
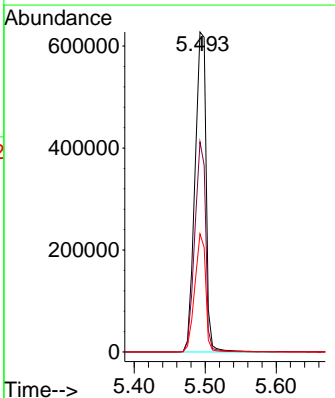
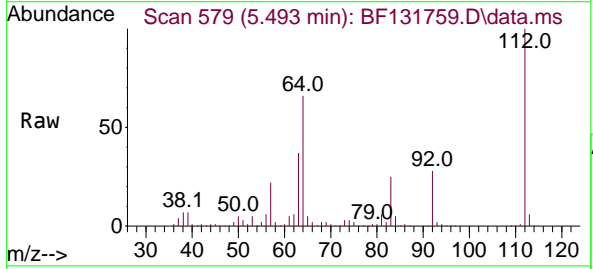
Ion	Ratio	Lower	Upper
152	100		
150	148.9	117.4	176.0
115	64.2	50.2	75.4

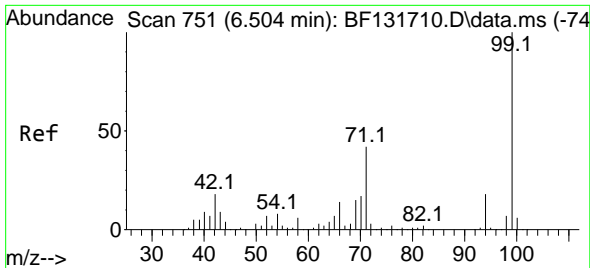


#5
 2-Fluorophenol
 Concen: 137.261 ng
 RT: 5.493 min Scan# 579
 Delta R.T. 0.018 min
 Lab File: BF131759.D
 Acq: 21 Dec 2022 22:32

Tgt Ion:112 Resp: 687787

Ion	Ratio	Lower	Upper
112	100		
64	65.7	49.5	74.3
63	36.9	28.2	42.2



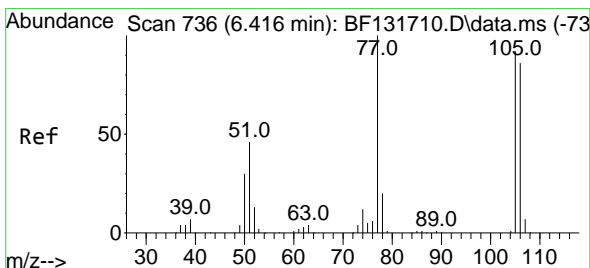
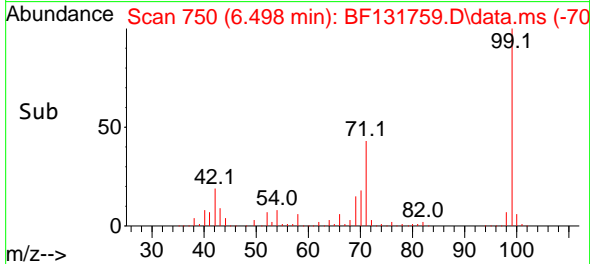
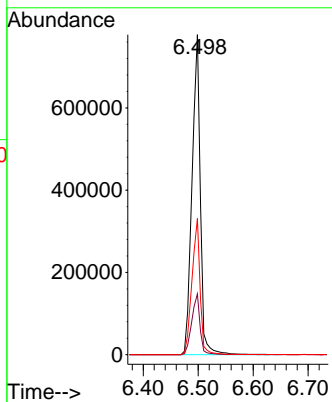
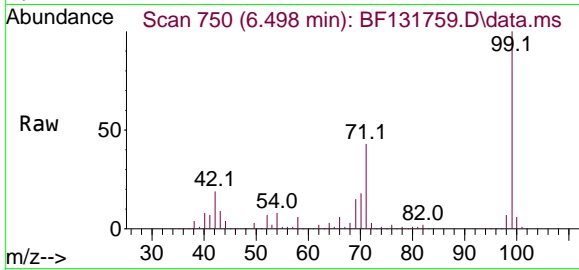


#7
 Phenol-d6
 Concen: 120.549 ng
 RT: 6.498 min Scan# 71
 Delta R.T. -0.006 min
 Lab File: BF131759.D
 Acq: 21 Dec 2022 22:32

Instrument :
 BNA_F
 ClientSampleId :
 C3

Tgt Ion: 99 Resp: 813030

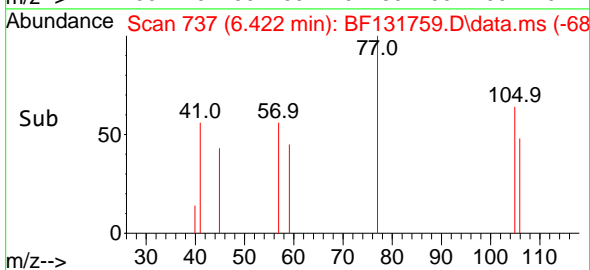
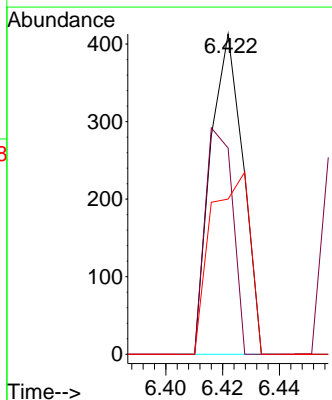
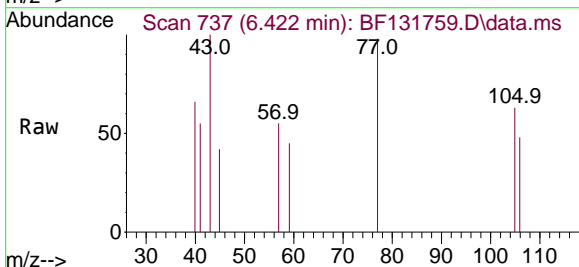
Ion	Ratio	Lower	Upper
99	100		
42	19.0	14.8	22.2
71	42.5	33.8	50.6

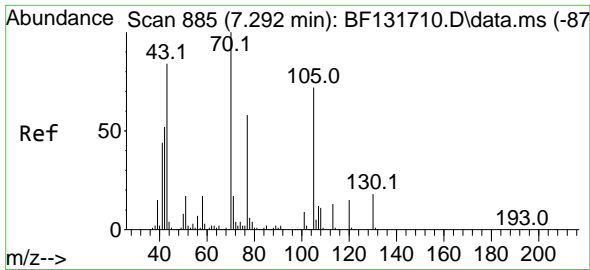


#9
 Benzaldehyde
 Concen: Below Cal
 RT: 6.422 min Scan# 737
 Delta R.T. 0.006 min
 Lab File: BF131759.D
 Acq: 21 Dec 2022 22:32

Tgt Ion: 77 Resp: 327

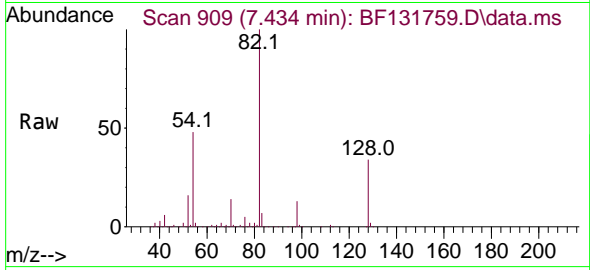
Ion	Ratio	Lower	Upper
77	100		
105	64.4	72.4	112.4#
106	48.4	66.5	106.5#



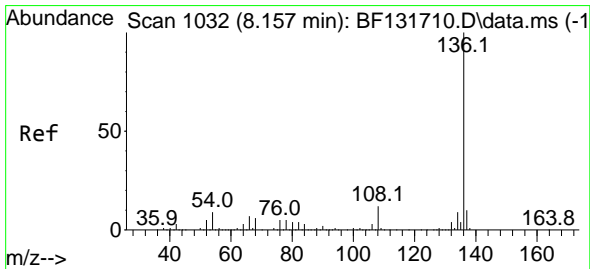
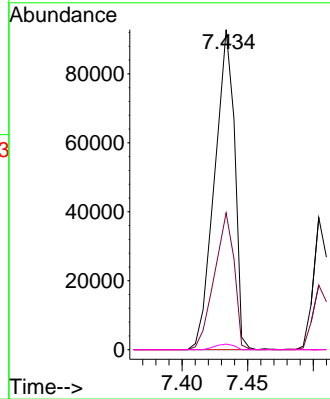
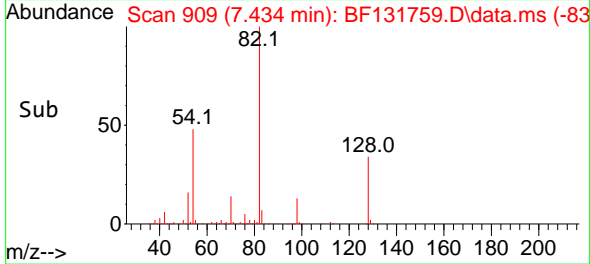


#19
 n-Nitroso-di-n-propylamine
 Concen: 20.207 ng
 RT: 7.434 min Scan# 90
 Delta R.T. 0.141 min
 Lab File: BF131759.D
 Acq: 21 Dec 2022 22:32

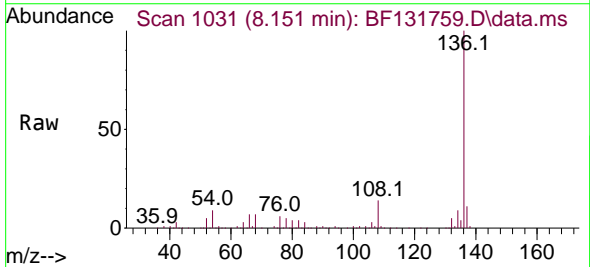
Instrument :
 BNA_F
 ClientSampleId :
 C3



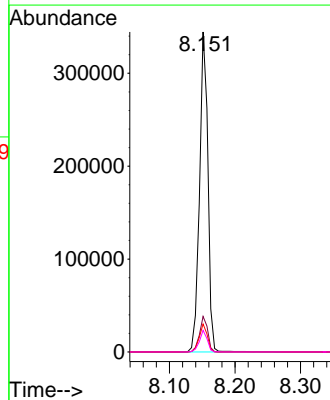
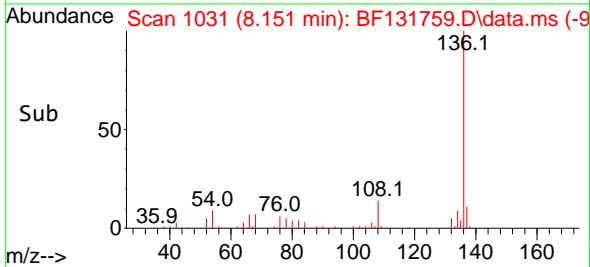
Tgt Ion: 70 Resp: 98291
 Ion Ratio Lower Upper
 70 100
 42 42.8 41.5 62.3
 101 0.0 7.3 10.9#
 130 1.8 14.4 21.6#

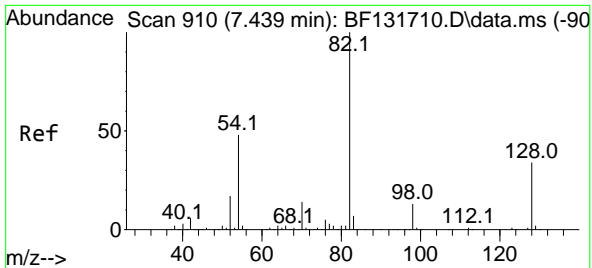


#21
 Naphthalene-d8
 Concen: 20.000 ng
 RT: 8.151 min Scan# 1031
 Delta R.T. -0.006 min
 Lab File: BF131759.D
 Acq: 21 Dec 2022 22:32



Tgt Ion: 136 Resp: 306208
 Ion Ratio Lower Upper
 136 100
 137 11.1 8.4 12.6
 54 8.8 7.2 10.8
 68 6.7 5.0 7.6

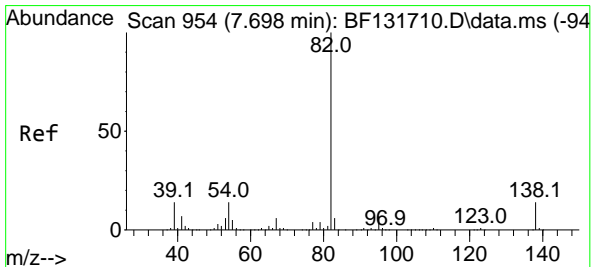
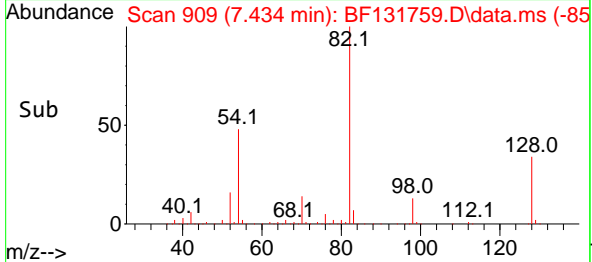
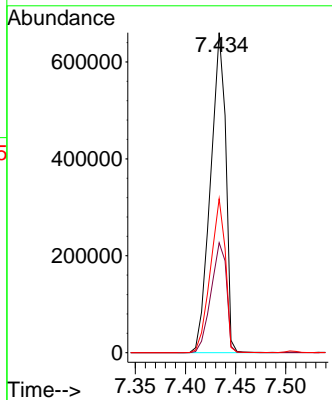
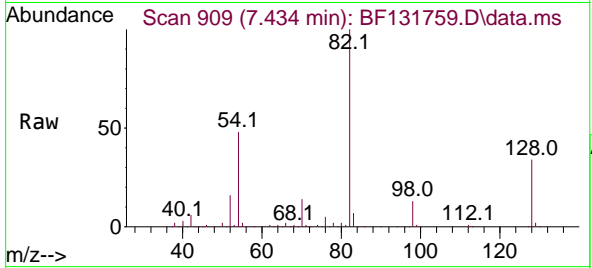




#23
 Nitrobenzene-d5
 Concen: 92.701 ng
 RT: 7.434 min Scan# 909
 Delta R.T. -0.006 min
 Lab File: BF131759.D
 Acq: 21 Dec 2022 22:32

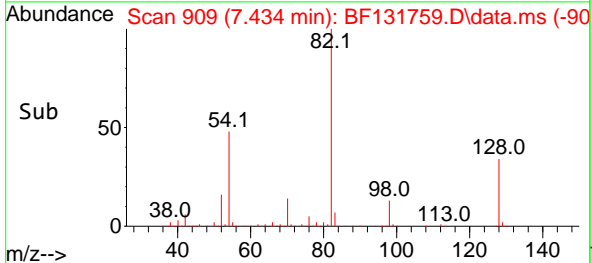
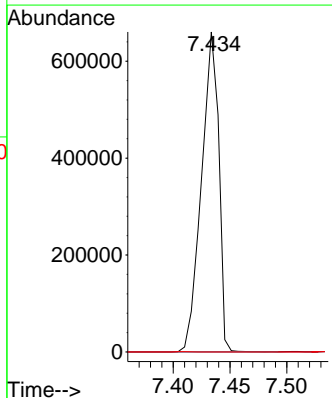
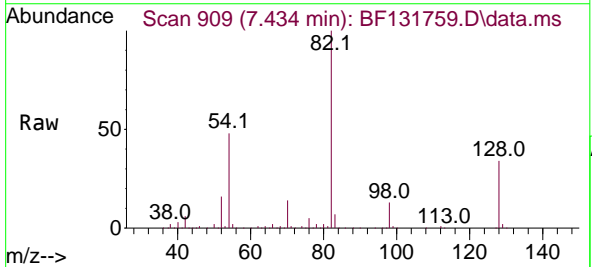
Instrument : BNA_F
 ClientSampleId : C3

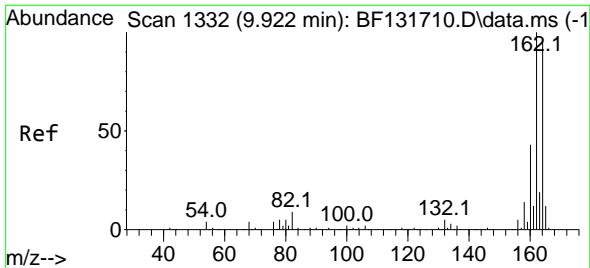
Tgt Ion	Resp	Lower	Upper
82	100		
128	34.4	27.3	40.9
54	48.1	38.2	57.2



#25
 Isophorone
 Concen: 54.476 ng
 RT: 7.434 min Scan# 909
 Delta R.T. -0.265 min
 Lab File: BF131759.D
 Acq: 21 Dec 2022 22:32

Tgt Ion	Resp	Lower	Upper
82	100		
95	0.0	5.8	8.6#
138	0.0	11.6	17.4#



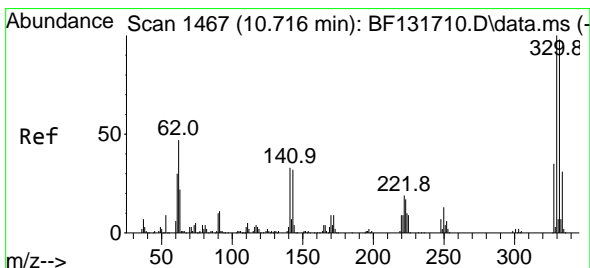
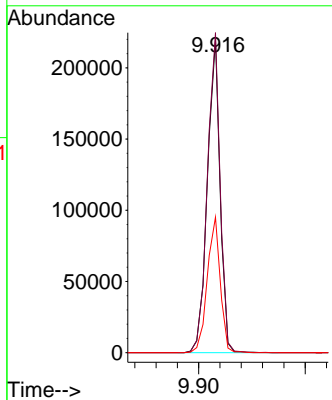
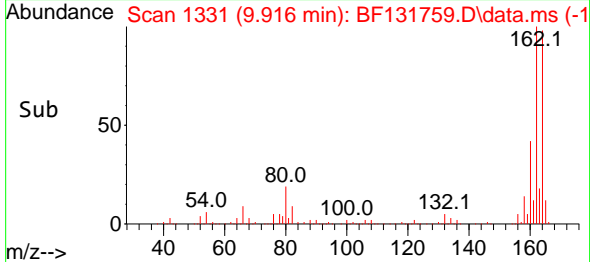
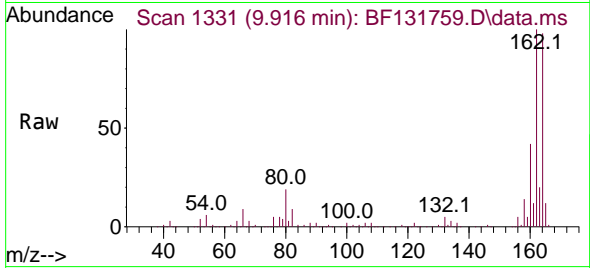


#39
 Acenaphthene-d10
 Concen: 20.000 ng
 RT: 9.916 min Scan# 11
 Delta R.T. -0.006 min
 Lab File: BF131759.D
 Acq: 21 Dec 2022 22:32

Instrument :
 BNA_F
 ClientSampleId :
 C3

Tgt Ion:164 Resp: 182848

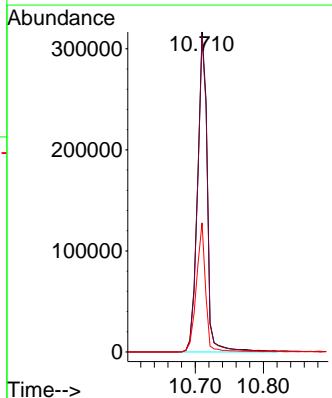
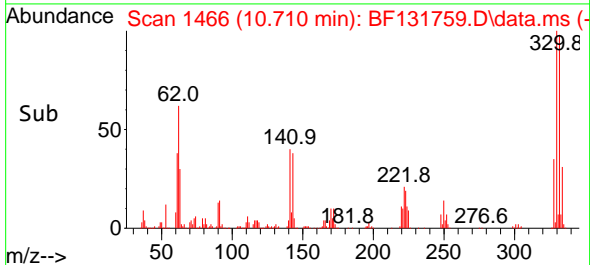
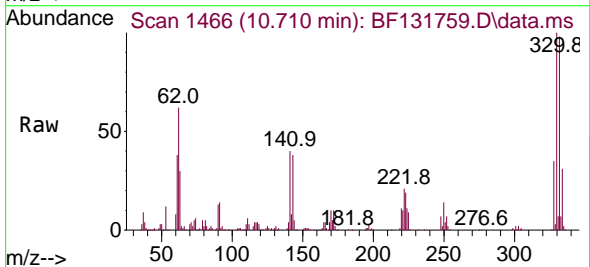
Ion	Ratio	Lower	Upper
164	100		
162	102.2	83.7	125.5
160	43.3	36.2	54.4

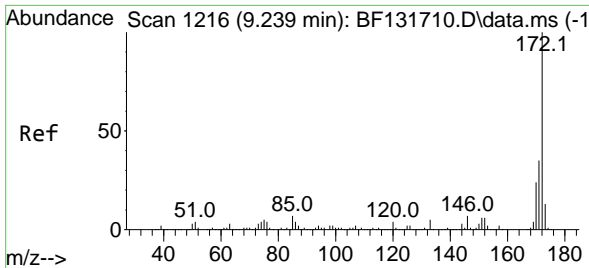


#42
 2,4,6-Tribromophenol
 Concen: 157.964 ng
 RT: 10.710 min Scan# 1466
 Delta R.T. -0.006 min
 Lab File: BF131759.D
 Acq: 21 Dec 2022 22:32

Tgt Ion:330 Resp: 316140

Ion	Ratio	Lower	Upper
330	100		
332	98.4	77.1	115.7
141	38.3	30.4	45.6



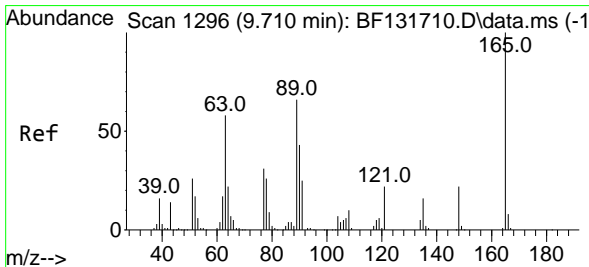
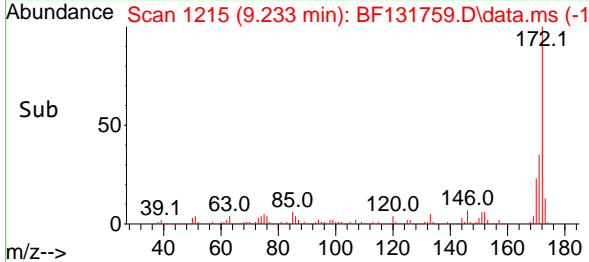
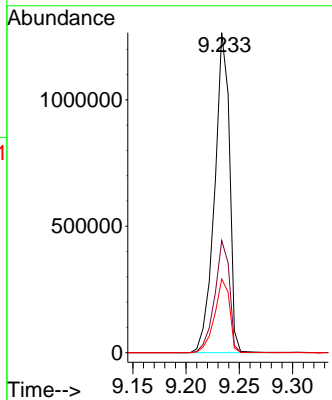
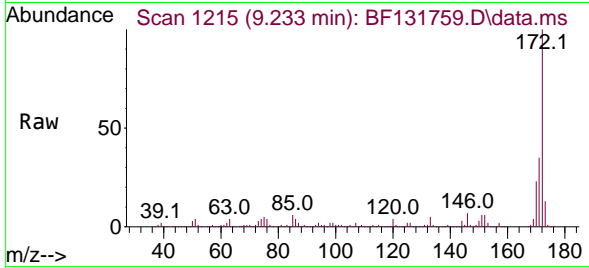


#45
 2-Fluorobiphenyl
 Concen: 93.853 ng
 RT: 9.233 min Scan# 11
 Delta R.T. -0.006 min
 Lab File: BF131759.D
 Acq: 21 Dec 2022 22:32

Instrument : BNA_F
 ClientSampleId : C3

Tgt Ion:172 Resp: 1225051

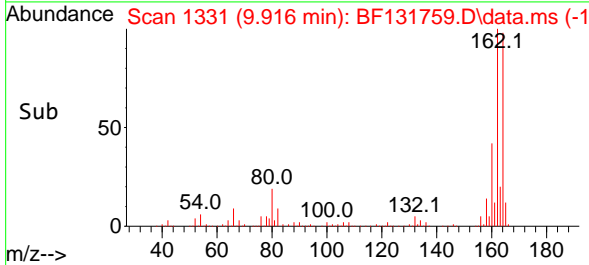
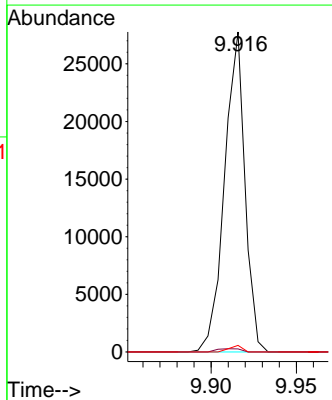
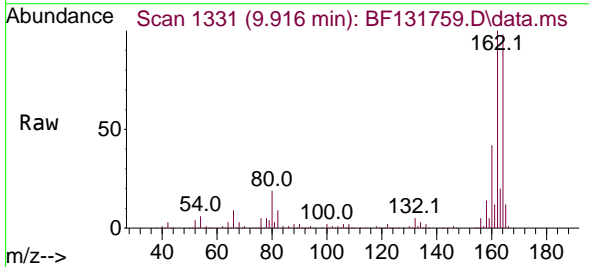
Ion	Ratio	Lower	Upper
172	100		
171	35.1	27.9	41.9
170	23.0	19.0	28.4

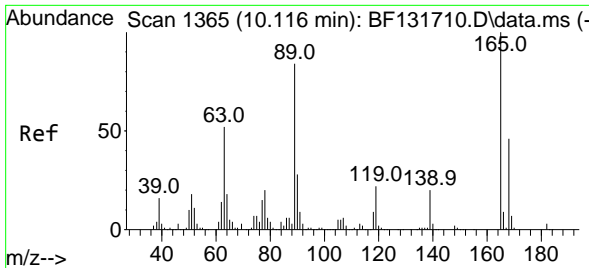


#51
 2,6-Dinitrotoluene
 Concen: 7.828 ng
 RT: 9.916 min Scan# 1331
 Delta R.T. 0.206 min
 Lab File: BF131759.D
 Acq: 21 Dec 2022 22:32

Tgt Ion:165 Resp: 23157

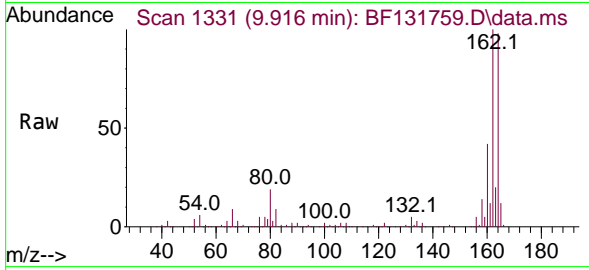
Ion	Ratio	Lower	Upper
165	100		
63	1.0	51.8	77.8#
89	2.1	53.2	79.8#



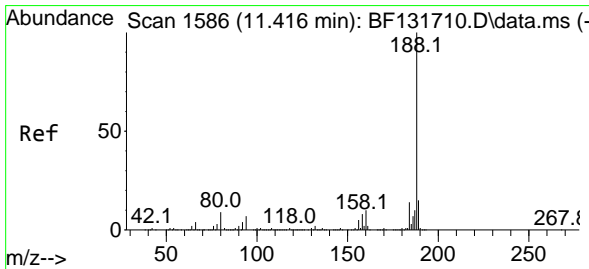
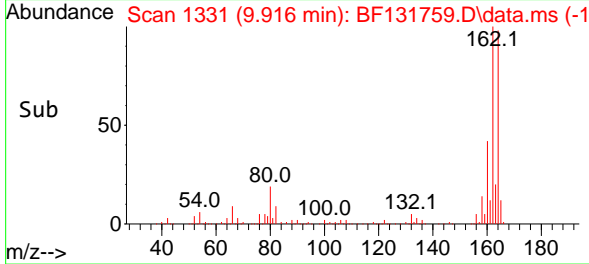
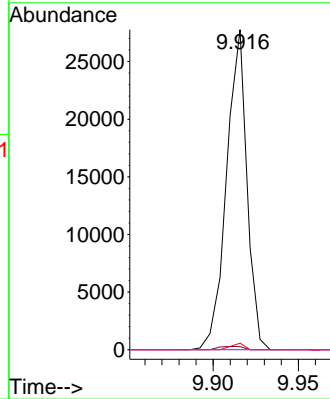


#57
 2,4-Dinitrotoluene
 Concen: 5.825 ng
 RT: 9.916 min Scan# 11
 Delta R.T. -0.200 min
 Lab File: BF131759.D
 Acq: 21 Dec 2022 22:32

Instrument :
 BNA_F
 ClientSampleId :
 C3

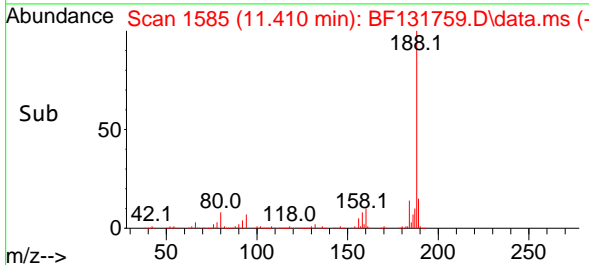
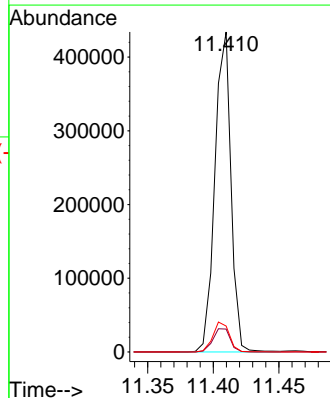
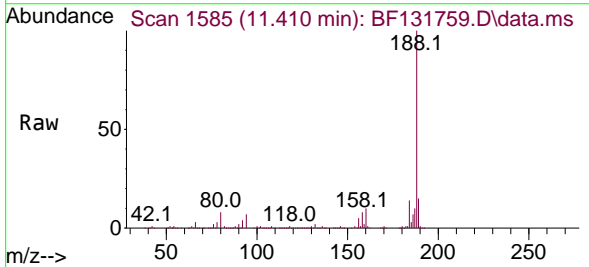


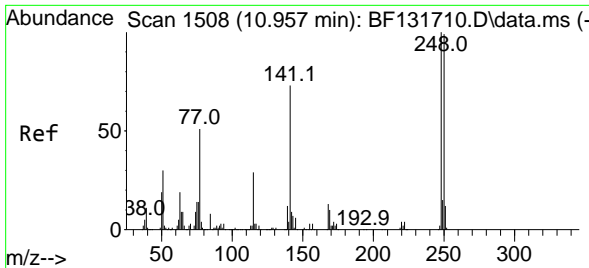
Tgt Ion:165 Resp: 23157
 Ion Ratio Lower Upper
 165 100
 63 1.0 41.5 62.3#
 89 2.1 67.0 100.4#
 182 0.0 2.2 3.4#



#64
 Phenanthrene-d10
 Concen: 20.000 ng
 RT: 11.410 min Scan# 1585
 Delta R.T. -0.006 min
 Lab File: BF131759.D
 Acq: 21 Dec 2022 22:32

Tgt Ion:188 Resp: 369617
 Ion Ratio Lower Upper
 188 100
 94 7.2 5.9 8.9
 80 8.1 7.0 10.6

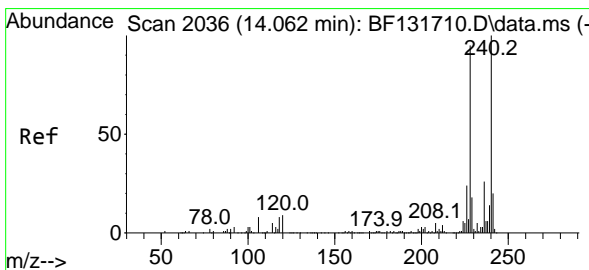
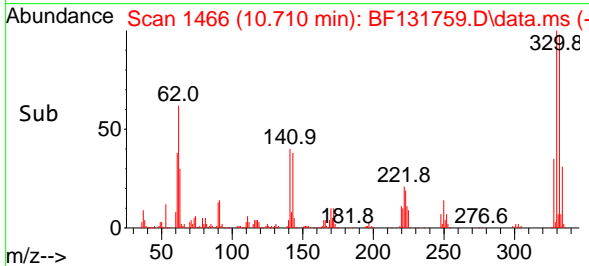
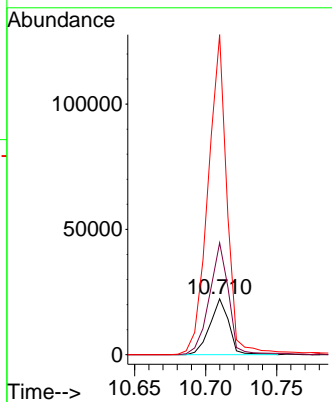
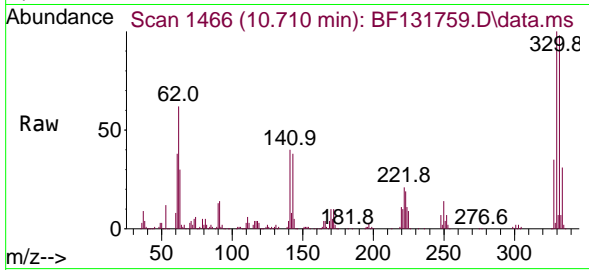




#67
 4-Bromophenyl-phenylether
 Concen: 4.761 ng
 RT: 10.710 min Scan# 1466
 Delta R.T. -0.247 min
 Lab File: BF131759.D
 Acq: 21 Dec 2022 22:32

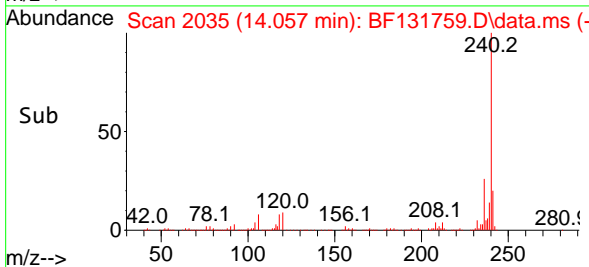
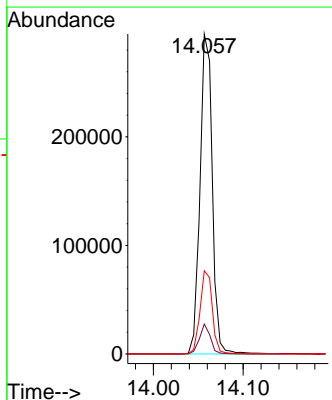
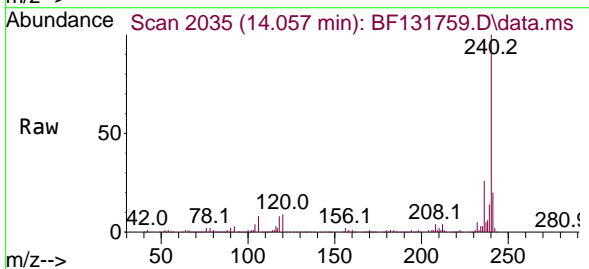
Instrument :
 BNA_F
 ClientSampleId :
 C3

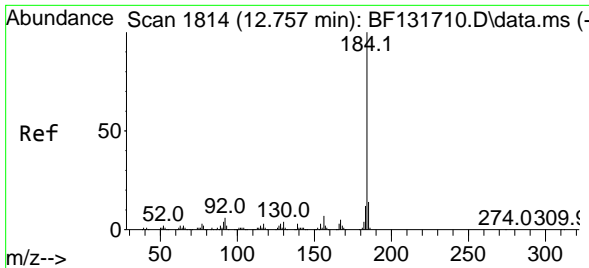
Tgt Ion:248 Resp: 20784
 Ion Ratio Lower Upper
 248 100
 250 200.2 79.4 119.0#
 141 573.0 58.1 87.1#



#76
 Chrysene-d12
 Concen: 20.000 ng
 RT: 14.057 min Scan# 2035
 Delta R.T. -0.006 min
 Lab File: BF131759.D
 Acq: 21 Dec 2022 22:32

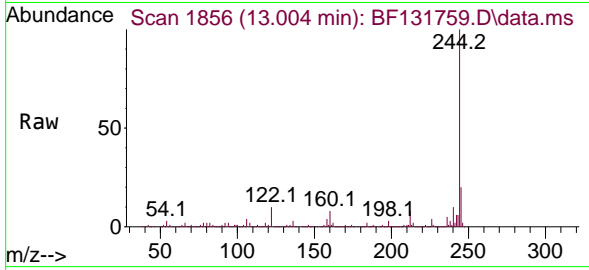
Tgt Ion:240 Resp: 280457
 Ion Ratio Lower Upper
 240 100
 120 9.4 7.6 11.4
 236 26.0 21.2 31.8



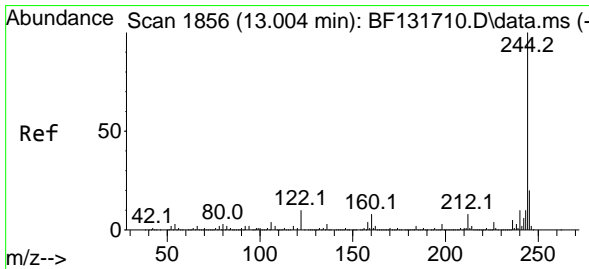
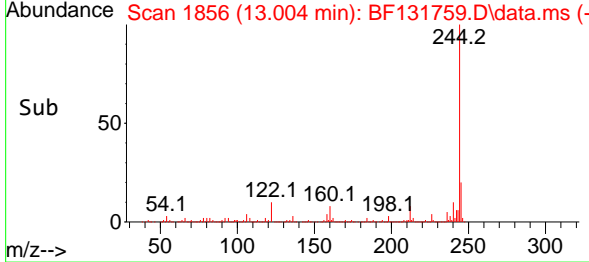
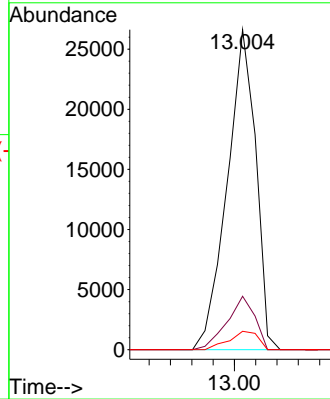


#77
 Benzidine
 Concen: 4.823 ng
 RT: 13.004 min Scan# 1856
 Delta R.T. 0.247 min
 Lab File: BF131759.D
 Acq: 21 Dec 2022 22:32

Instrument :
 BNA_F
 ClientSampleId :
 C3

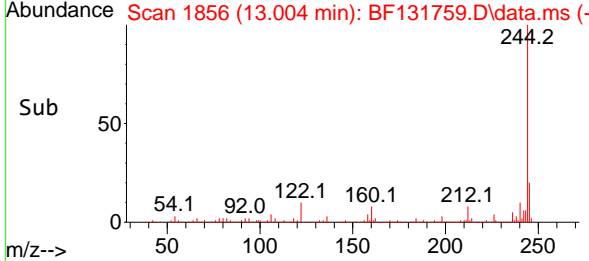
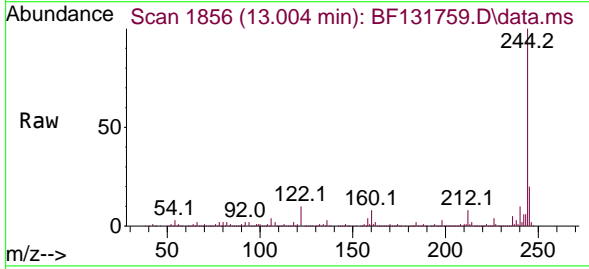
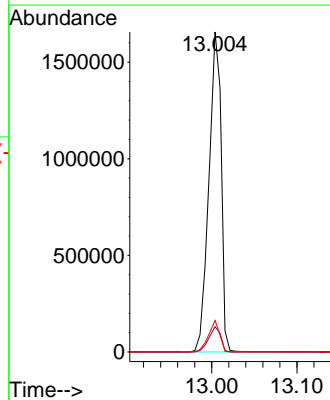


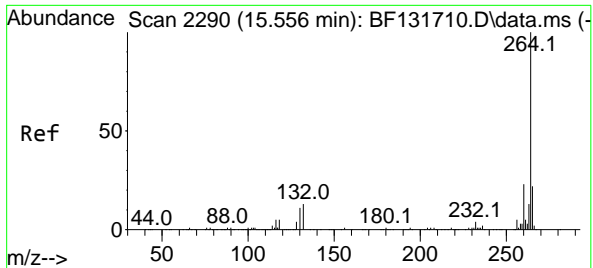
Tgt Ion:184 Resp: 24803
 Ion Ratio Lower Upper
 184 100
 185 16.7 11.3 16.9
 183 5.7 9.3 13.9#



#79
 Terphenyl-d14
 Concen: 92.331 ng
 RT: 13.004 min Scan# 1856
 Delta R.T. 0.000 min
 Lab File: BF131759.D
 Acq: 21 Dec 2022 22:32

Tgt Ion:244 Resp: 1661505
 Ion Ratio Lower Upper
 244 100
 212 7.9 6.5 9.7
 122 9.8 7.7 11.5





#86
 Perylene-d12
 Concen: 20.000 ng
 RT: 15.557 min Scan# 21
 Delta R.T. 0.000 min
 Lab File: BF131759.D
 Acq: 21 Dec 2022 22:32

Instrument :
 BNA_F
 ClientSampleId :
 C3

Tgt Ion:264 Resp: 234354

Ion	Ratio	Lower	Upper
264	100		
260	24.4	18.6	28.0
265	21.6	17.4	26.2

