

Data Path : Z:\HPCHEM1\BNA F\DATA\BF122216\
 Data File : BF091910.D
 Acq On : 23 Dec 2016 7:22
 Operator : UM/SJ
 Sample : H6182-01
 Misc :
 ALS Vial : 50 Sample Multiplier: 1

Instrument :
 BNA_F
 ClientSampleId :
 SB-51(0-1)-121916

Quant Time: Dec 23 16:05:15 2016
 Quant Method : Z:\HPCHEM1\BNA F\METHODS\8270-BF122116.M
 Quant Title : ASP BNA STANDARDS FOR 5 POINT CALIBRATION
 QLast Update : Wed Dec 21 16:17:51 2016
 Response via : Initial Calibration

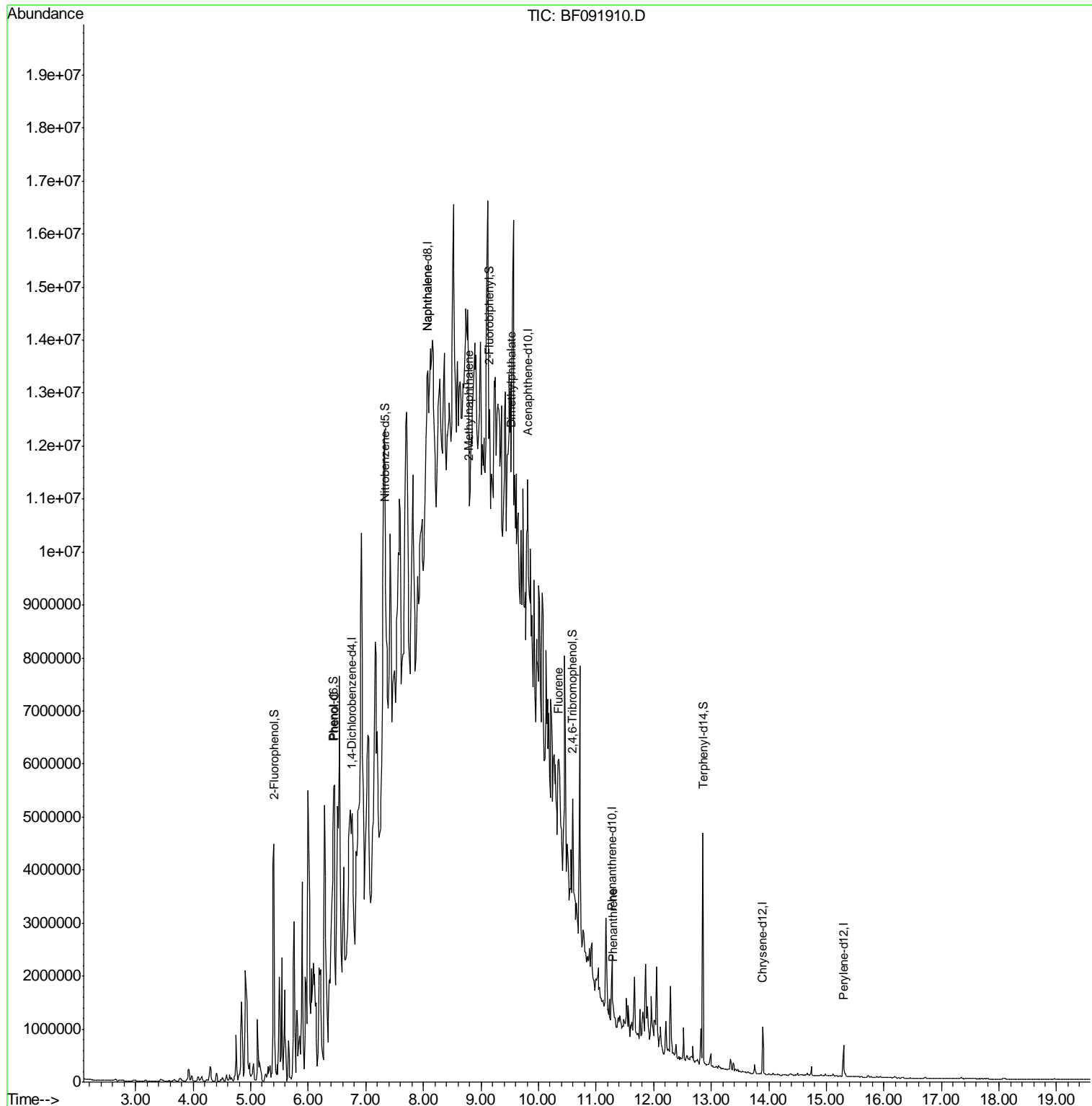
Internal Standards	R.T.	QIon	Response	Conc	Units	Dev(Min)
1) 1,4-Dichlorobenzene-d4	6.76	152	168670	20.00	ng	0.01
21) Naphthalene-d8	8.06	136	505409	20.00	ng	0.02
38) Acenaphthene-d10	9.81	164	273265	20.00	ng	0.02
63) Phenanthrene-d10	11.28	188	586293	20.00	ng	0.01
75) Chrysene-d12	13.89	240	364091	20.00	ng	-0.01
86) Perylene-d12	15.30	264	287331	20.00	ng	0.00
System Monitoring Compounds						
5) 2-Fluorophenol	5.40	112	1771334	175.35	ng	0.06
7) Phenol-d6	6.44	99	2079424	168.60	ng	0.03
23) Nitrobenzene-d5	7.33	82	1176175	129.40	ng	0.01
41) 2,4,6-Tribromophenol	10.59	330	325688	144.02	ng	0.01
44) 2-Fluorobiphenyl	9.15	172	1562718	122.93	ng	0.03
78) Terphenyl-d14	12.85	244	1390697	92.64	ng	0.00
Target Compounds						
10) Phenol	6.45	94	88919	6.33	ng	# 13
31) Naphthalene	8.06	128	252347	10.91	ng	# 1
37) 2-Methylnaphthalene	8.80	142	322622	18.89	ng	# 90
49) Dimethylphthalate	9.53	163	194099	11.11	ng	# 68
57) Fluorene	10.35	166	173722	11.44	ng	# 83
70) Phenanthrene	11.30	178	125036	3.93	ng	# 92

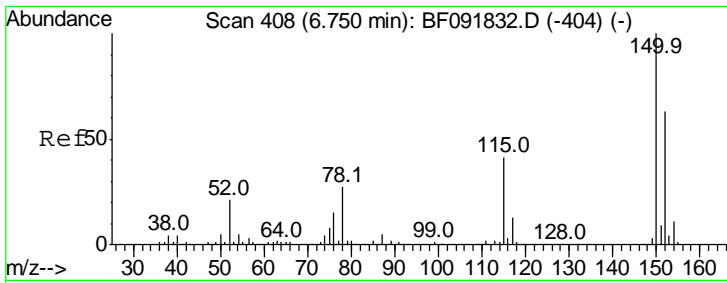
(#) = qualifier out of range (m) = manual integration (+) = signals summed

Data Path : Z:\HPCHEM1\BNA F\DATA\BF122216\
 Data File : BF091910.D
 Acq On : 23 Dec 2016 7:22
 Operator : UM/SJ
 Sample : H6182-01
 Misc :
 ALS Vial : 50 Sample Multiplier: 1

Instrument :
 BNA_F
ClientSampleID :
 SB-51(0-1)-121916

Quant Time: Dec 23 16:05:15 2016
 Quant Method : Z:\HPCHEM1\BNA F\METHODS\8270-BF122116.M
 Quant Title : ASP BNA STANDARDS FOR 5 POINT CALIBRATION
 QLast Update : Wed Dec 21 16:17:51 2016
 Response via : Initial Calibration

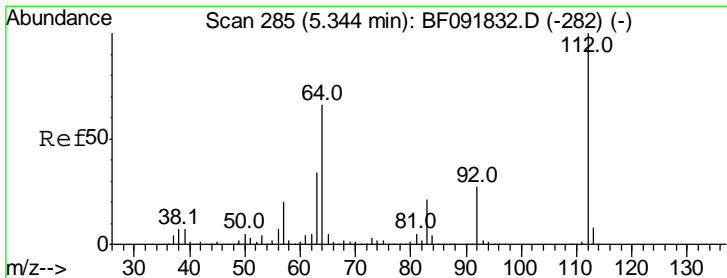
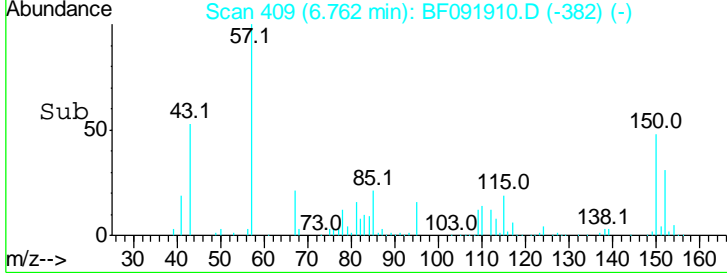
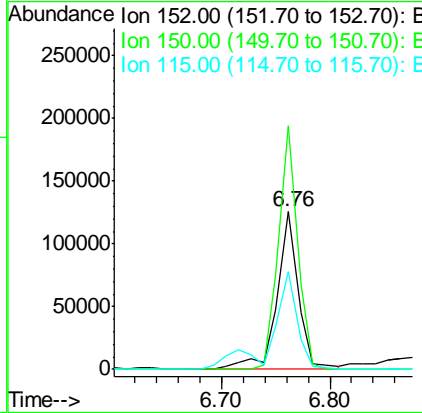
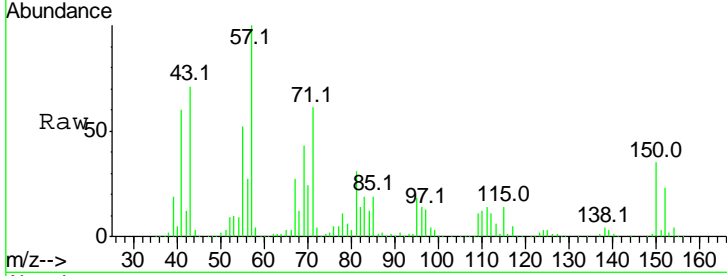




#1
 1,4-Dichlorobenzene-d4
 Concen: 20.00 ng
 RT: 6.76 min Scan# 409
 Delta R.T. 0.01 min
 Lab File: BF091910.D
 Acq: 23 Dec 2016 7:22

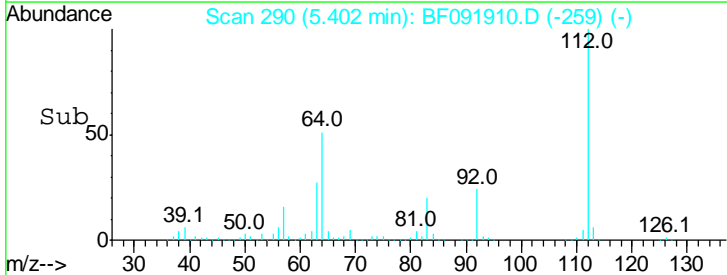
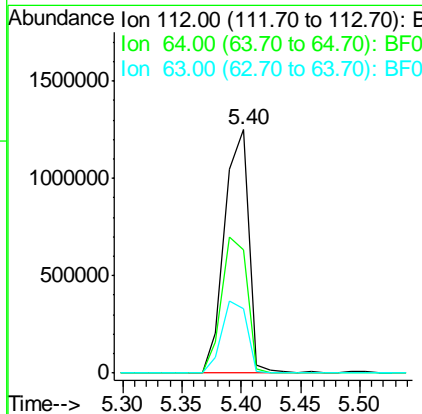
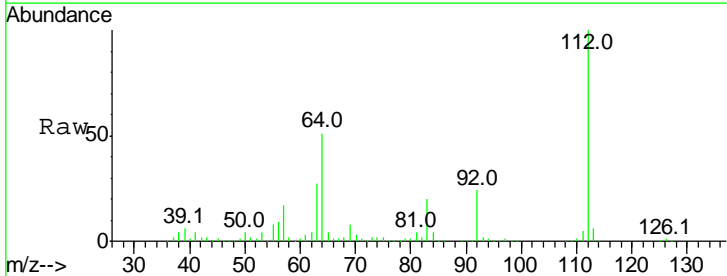
Instrument :
 BNA_F
ClientSampleId :
 SB-51(0-1)-121916

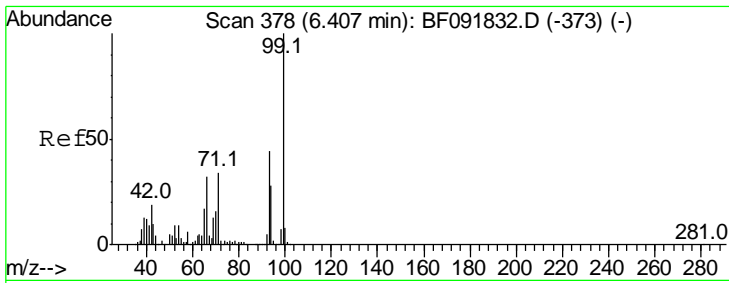
Tgt Ion	Resp	Lower	Upper
152	168670		
150	154.6	124.9	187.3
115	62.1	46.0	69.0



#5
 2-Fluorophenol
 Concen: 175.35 ng
 RT: 5.40 min Scan# 290
 Delta R.T. 0.06 min
 Lab File: BF091910.D
 Acq: 23 Dec 2016 7:22

Tgt Ion	Resp	Lower	Upper
112	1771334		
64	50.7	46.1	69.1
63	26.7	23.8	35.6

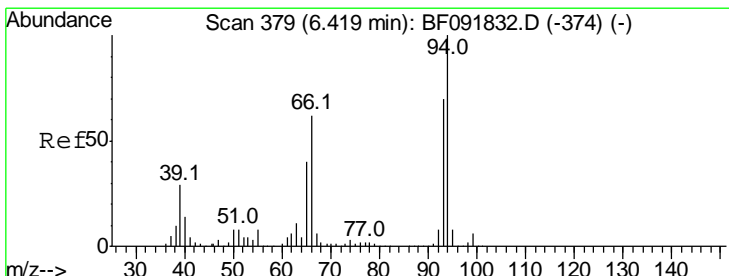
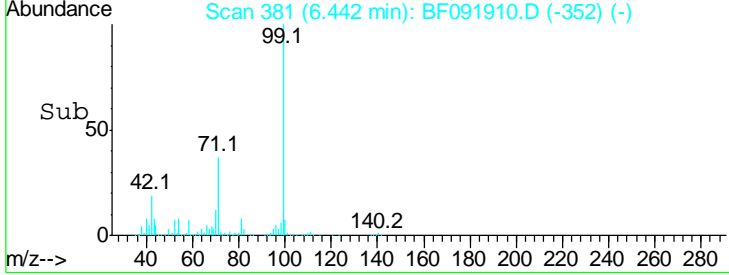
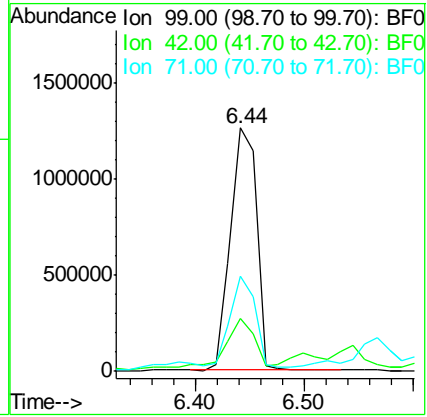
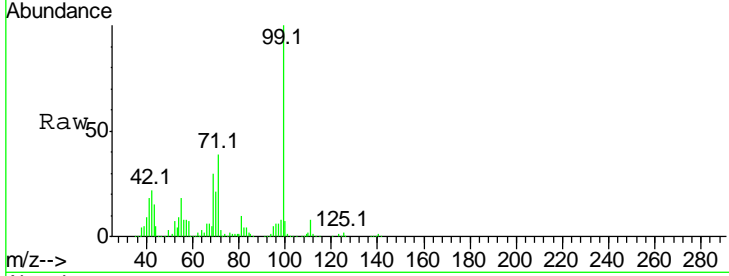




#7
 Phenol-d6
 Concen: 168.60 ng
 RT: 6.44 min Scan# 381
 Delta R.T. 0.03 min
 Lab File: BF091910.D
 Acq: 23 Dec 2016 7:22

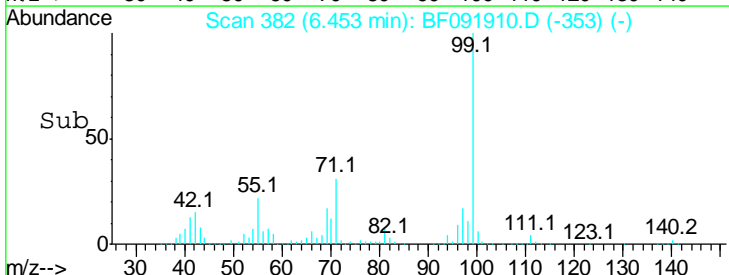
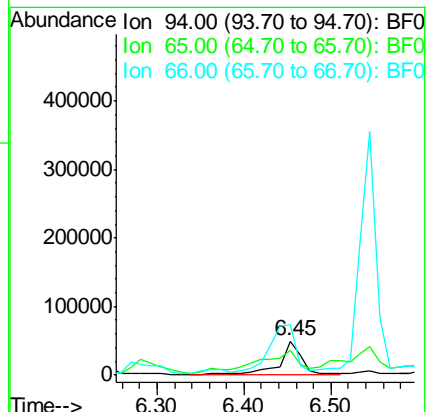
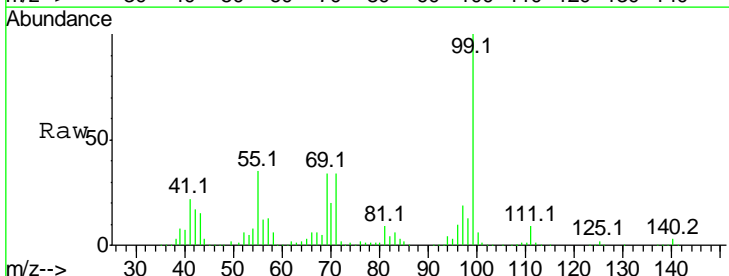
Tgt Ion	Resp	Lower	Upper
99	100		
42	22.0	15.6	23.4
71	39.2	27.5	41.3

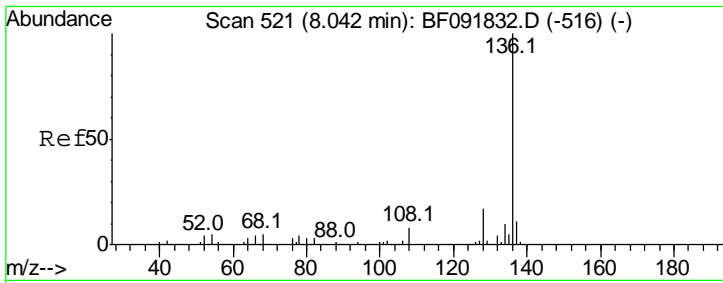
Instrument :
 BNA_F
ClientSampled :
 SB-51(0-1)-121916



#10
 Phenol
 Concen: 6.33 ng
 RT: 6.45 min Scan# 382
 Delta R.T. 0.03 min
 Lab File: BF091910.D
 Acq: 23 Dec 2016 7:22

Tgt Ion	Resp	Lower	Upper
94	100		
65	73.8	21.4	61.4#
66	150.0	44.0	84.0#

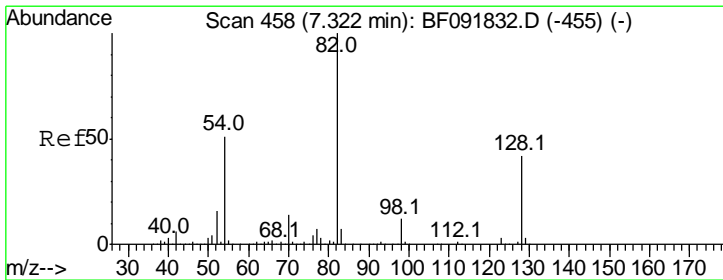
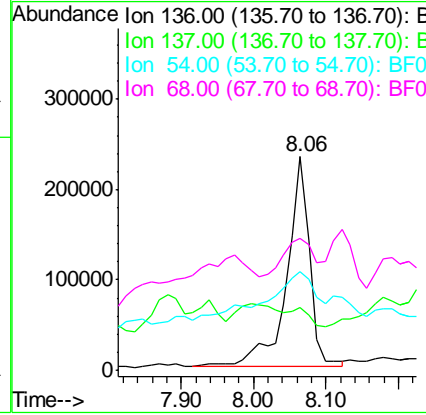
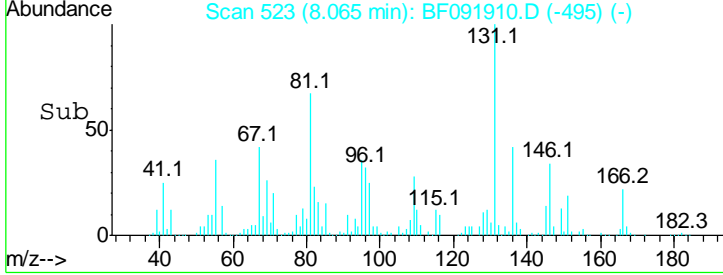
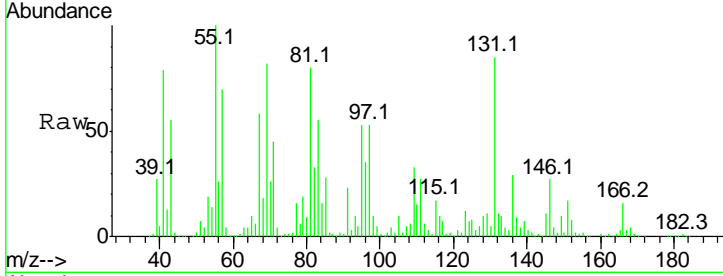




#21
 Naphthalene-d8
 Concen: 20.00 ng
 RT: 8.06 min Scan# 523
 Delta R.T. 0.02 min
 Lab File: BF091910.D
 Acq: 23 Dec 2016 7:22

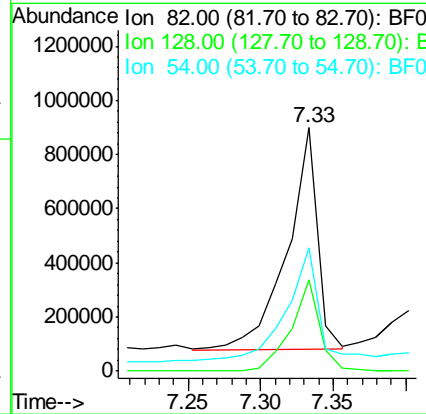
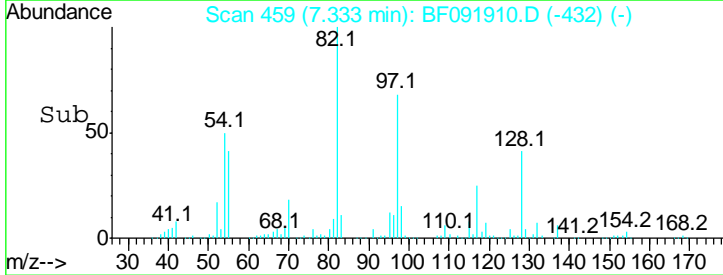
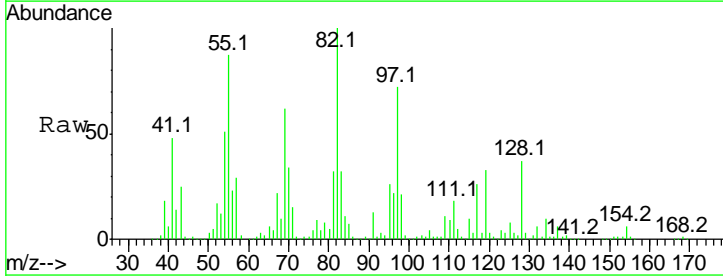
Instrument :
 BNA_F
ClientSampled :
 SB-51(0-1)-121916

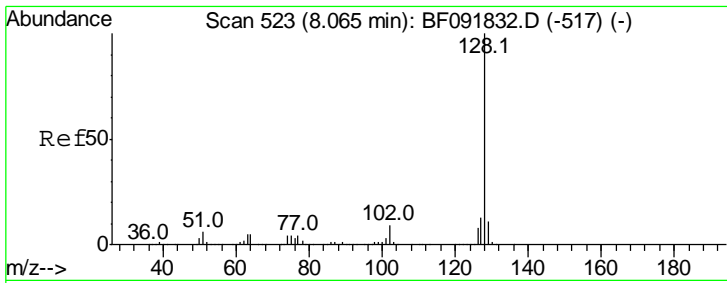
Tgt Ion	Resp	Lower	Upper
136	100		
137	29.6	8.4	12.6#
54	45.9	4.5	6.7#
68	61.9	3.6	5.4#



#23
 Nitrobenzene-d5
 Concen: 129.40 ng
 RT: 7.33 min Scan# 459
 Delta R.T. 0.01 min
 Lab File: BF091910.D
 Acq: 23 Dec 2016 7:22

Tgt Ion	Resp	Lower	Upper
82	100		
128	37.5	34.6	52.0
54	50.6	39.5	59.3

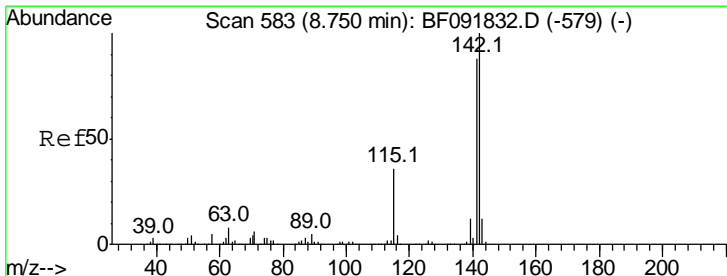
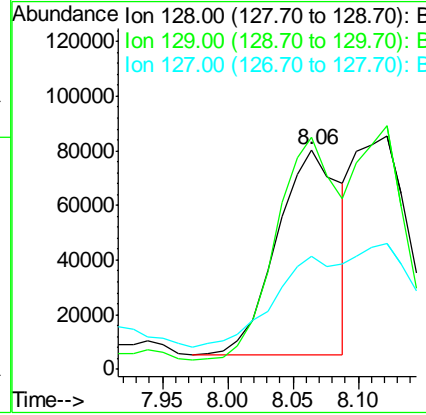
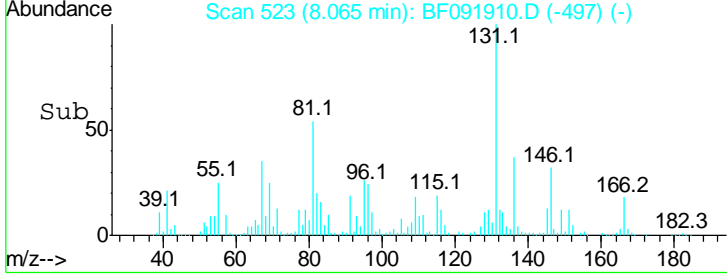
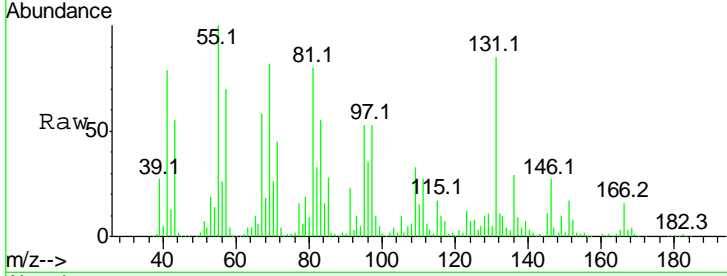




#31
 Naphthalene
 Concen: 10.91 ng
 RT: 8.06 min Scan# 523
 Delta R.T. -0.00 min
 Lab File: BF091910.D
 Acq: 23 Dec 2016 7:22

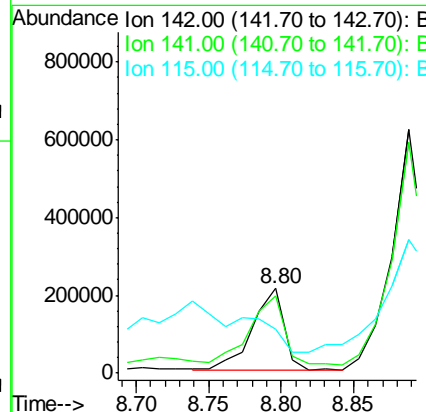
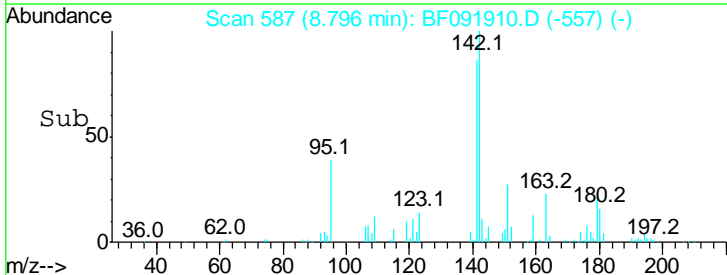
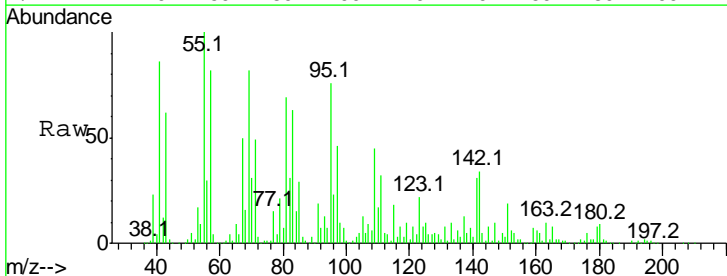
Instrument :
 BNA_F
ClientSampleId :
 SB-51(0-1)-121916

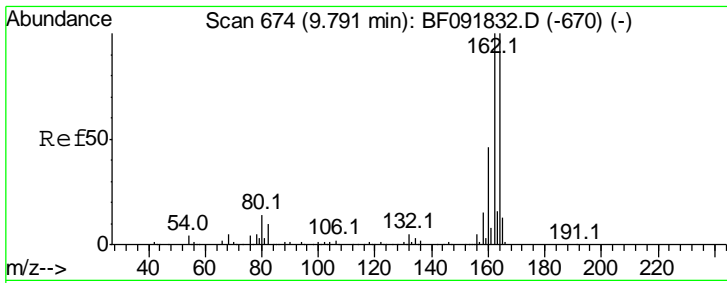
Tgt Ion	Resp	Lower	Upper
128	100		
129	106.0	9.5	14.3#
127	51.2	10.8	16.2#



#37
 2-Methylnaphthalene
 Concen: 18.89 ng
 RT: 8.80 min Scan# 587
 Delta R.T. 0.05 min
 Lab File: BF091910.D
 Acq: 23 Dec 2016 7:22

Tgt Ion	Resp	Lower	Upper
142	100		
141	91.1	71.0	106.6
115	52.3	28.3	42.5#

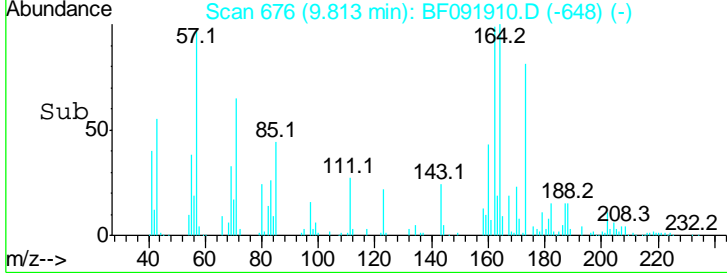
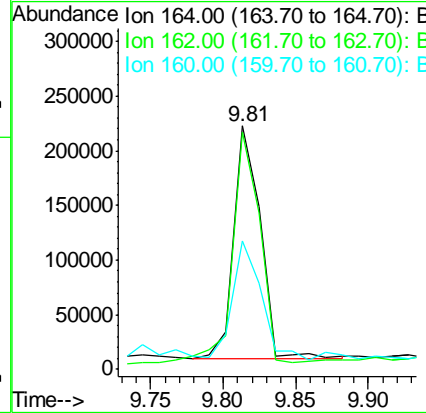
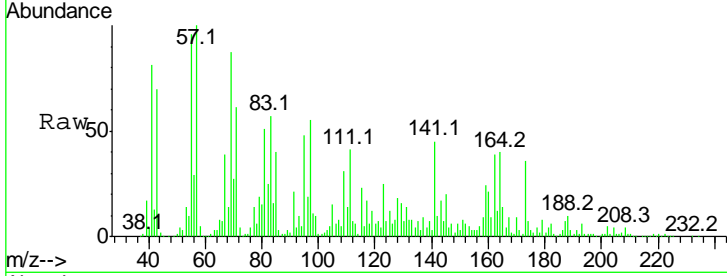




#38
 Acenaphthene-d10
 Concen: 20.00 ng
 RT: 9.81 min Scan# 676
 Delta R.T. 0.02 min
 Lab File: BF091910.D
 Acq: 23 Dec 2016 7:22

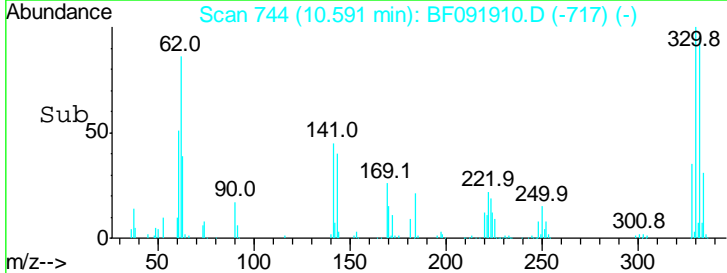
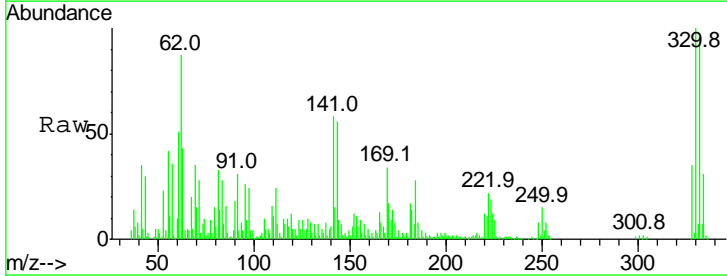
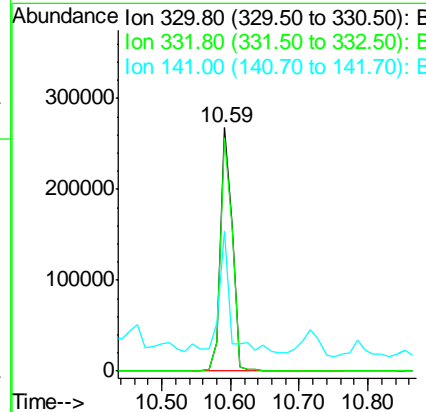
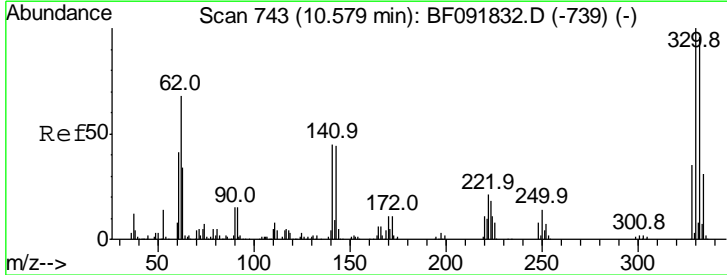
Instrument :
 BNA_F
ClientSampleId :
 SB-51(0-1)-121916

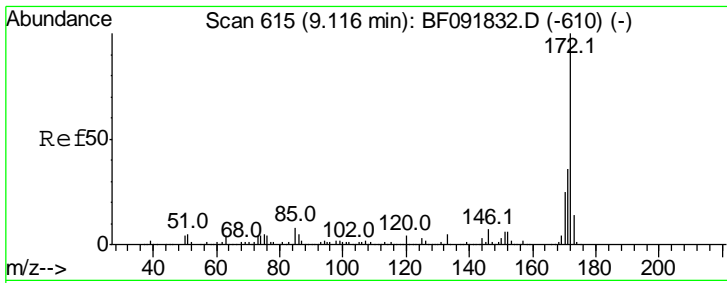
Tgt Ion	Resp	Lower	Upper
164	100		
162	97.5	80.2	120.2
160	52.8	36.9	55.3



#41
 2,4,6-Tribromophenol
 Concen: 144.02 ng
 RT: 10.59 min Scan# 744
 Delta R.T. 0.01 min
 Lab File: BF091910.D
 Acq: 23 Dec 2016 7:22

Tgt Ion	Resp	Lower	Upper
330	100		
332	97.0	77.4	116.2
141	49.5	34.1	51.1



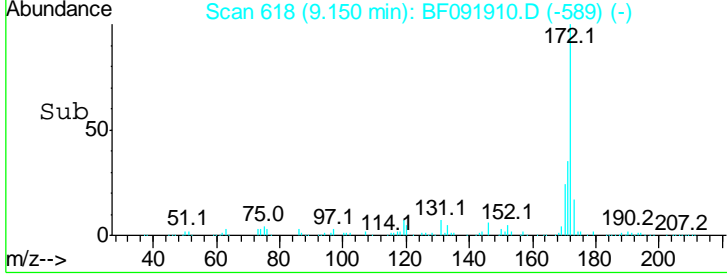
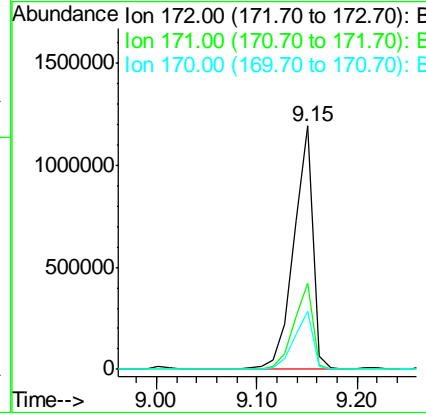
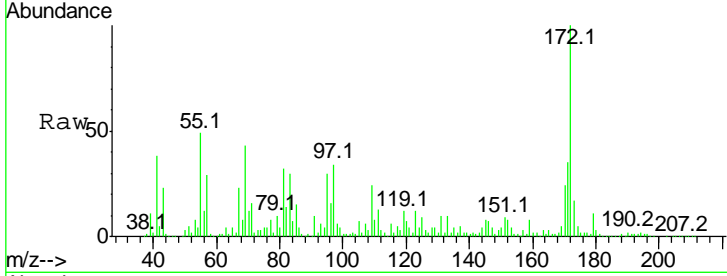


#44
 2-Fluorobiphenyl
 Concen: 122.93 ng
 RT: 9.15 min Scan# 618
 Delta R.T. 0.03 min
 Lab File: BF091910.D
 Acq: 23 Dec 2016 7:22

Instrument :
 BNA_F
 ClientSampleId :
 SB-51(0-1)-121916

Tgt Ion:172 Resp: 1562718

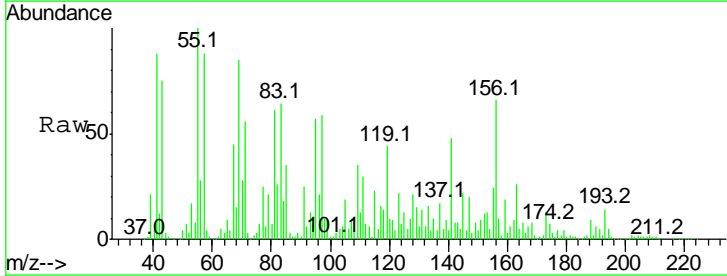
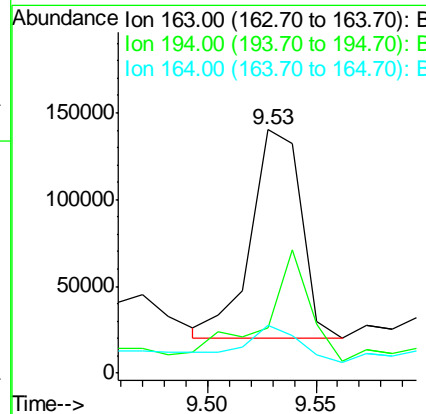
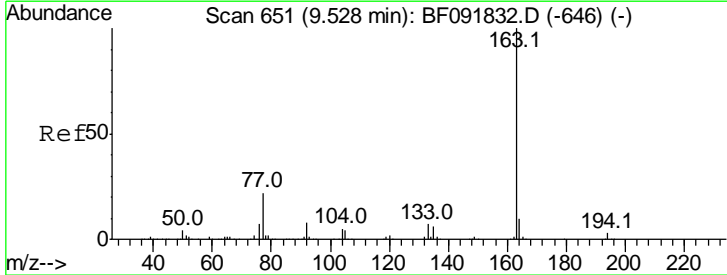
Ion	Ratio	Lower	Upper
172	100		
171	35.3	29.4	44.0
170	24.0	20.2	30.4

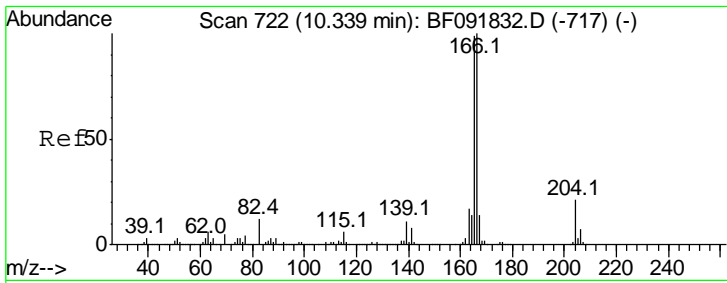


#49
 Dimethylphthalate
 Concen: 11.11 ng
 RT: 9.53 min Scan# 651
 Delta R.T. -0.00 min
 Lab File: BF091910.D
 Acq: 23 Dec 2016 7:22

Tgt Ion:163 Resp: 194099

Ion	Ratio	Lower	Upper
163	100		
194	18.7	3.0	4.4#
164	19.8	8.0	12.0#

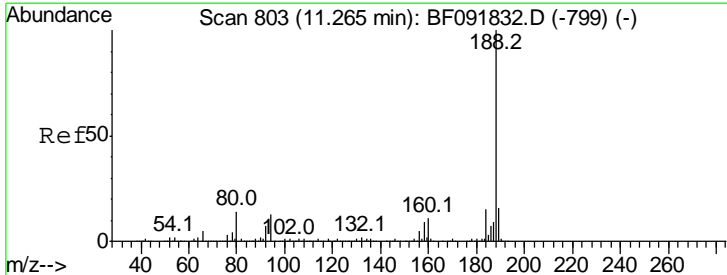
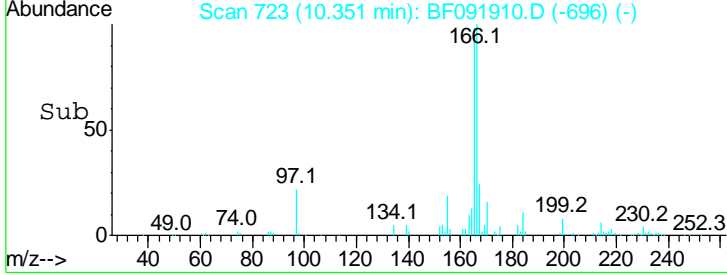
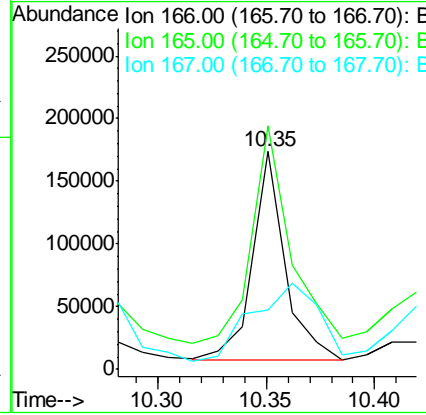
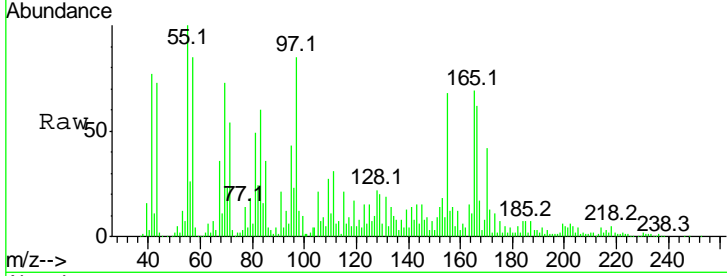




#57
 Fluorene
 Concen: 11.44 ng
 RT: 10.35 min Scan# 723
 Delta R.T. 0.01 min
 Lab File: BF091910.D
 Acq: 23 Dec 2016 7:22

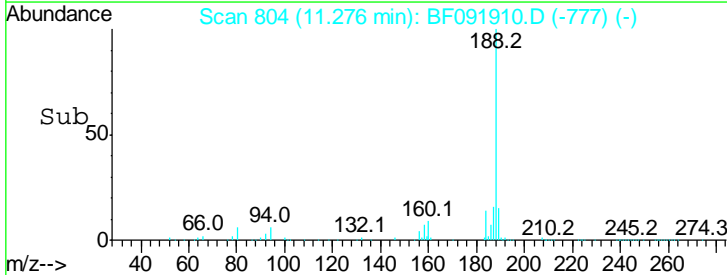
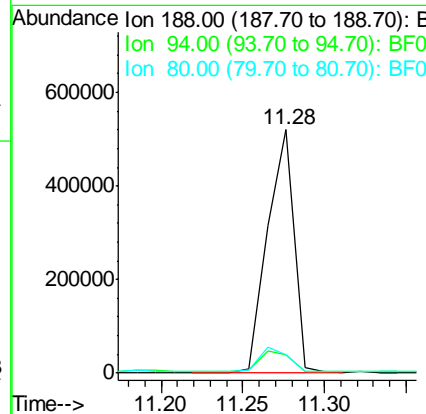
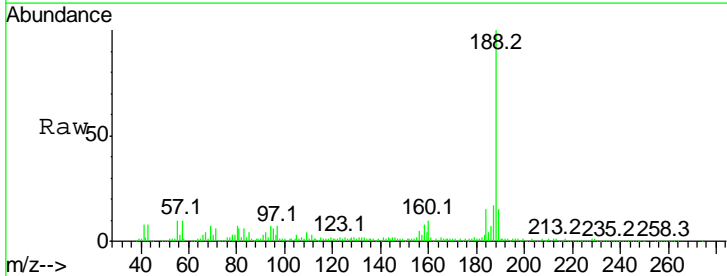
Instrument :
 BNA_F
ClientSampled :
 SB-51(0-1)-121916

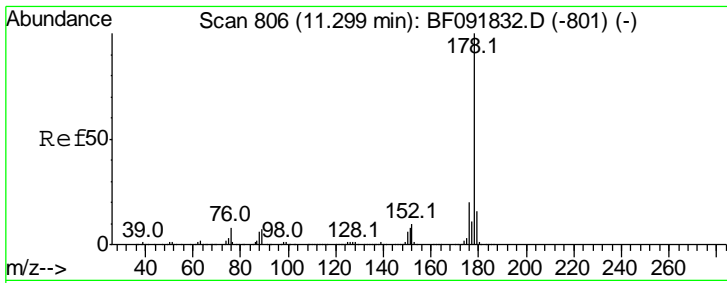
Tgt Ion	Resp	Lower	Upper
166	173722		
165	111.9	77.8	116.8
167	27.5	10.8	16.2#



#63
 Phenanthrene-d10
 Concen: 20.00 ng
 RT: 11.28 min Scan# 804
 Delta R.T. 0.01 min
 Lab File: BF091910.D
 Acq: 23 Dec 2016 7:22

Tgt Ion	Resp	Lower	Upper
188	586293		
94	7.3	10.0	15.0#
80	7.5	11.2	16.8#

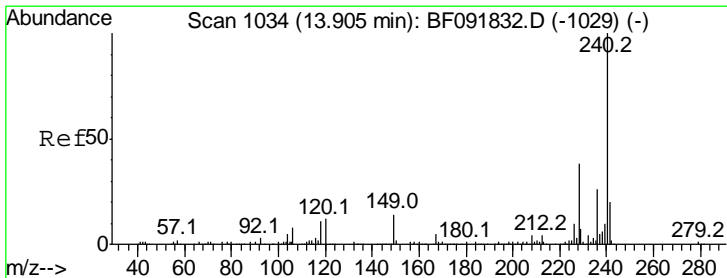
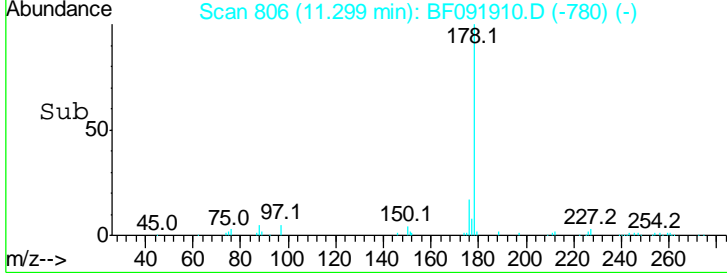
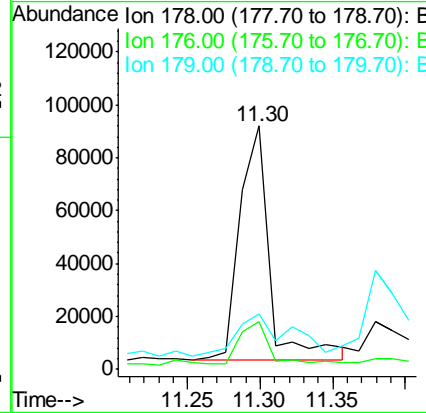
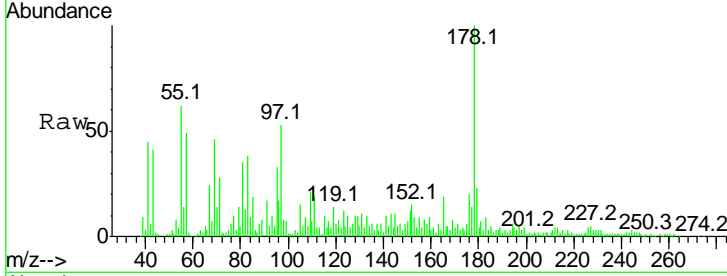




#70
 Phenanthrene
 Concen: 3.93 ng
 RT: 11.30 min Scan# 806
 Delta R.T. -0.00 min
 Lab File: BF091910.D
 Acq: 23 Dec 2016 7:22

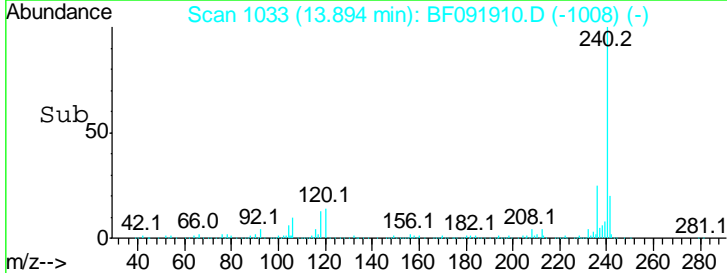
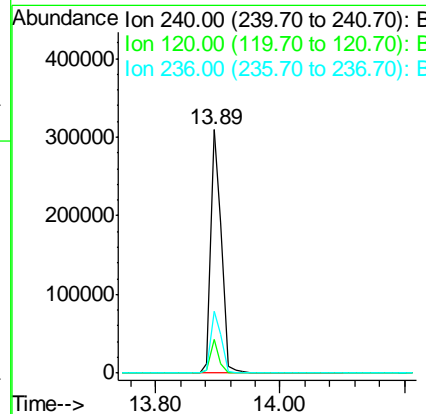
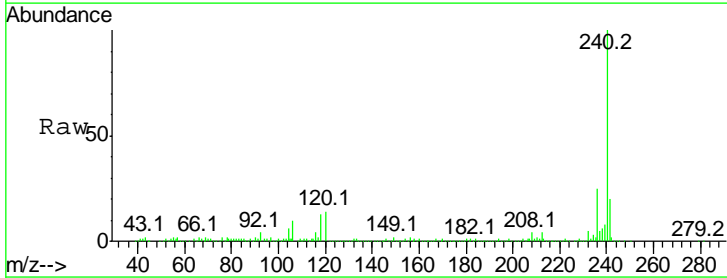
Instrument :
 BNA_F
ClientSampled :
 SB-51(0-1)-121916

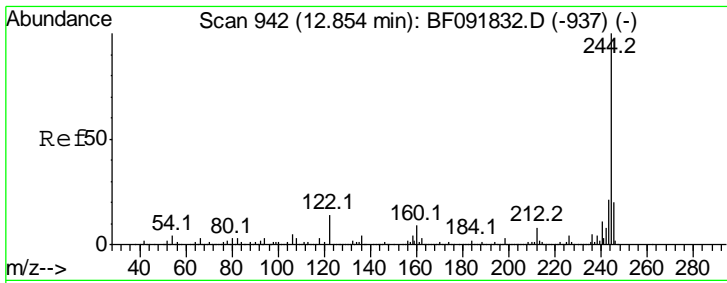
Tgt Ion	Resp	Lower	Upper
178	100		
176	19.8	16.6	25.0
179	22.7	12.8	19.2#



#75
 Chrysene-d12
 Concen: 20.00 ng
 RT: 13.89 min Scan# 1033
 Delta R.T. -0.01 min
 Lab File: BF091910.D
 Acq: 23 Dec 2016 7:22

Tgt Ion	Resp	Lower	Upper
240	100		
120	14.0	12.9	19.3
236	25.5	20.9	31.3



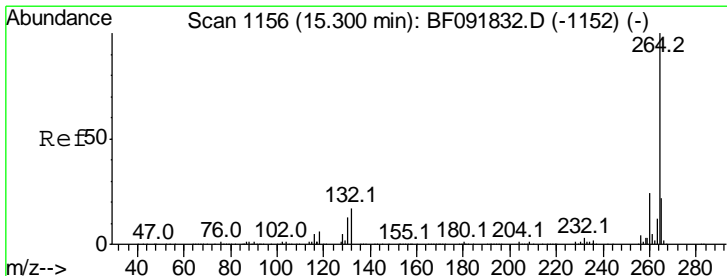
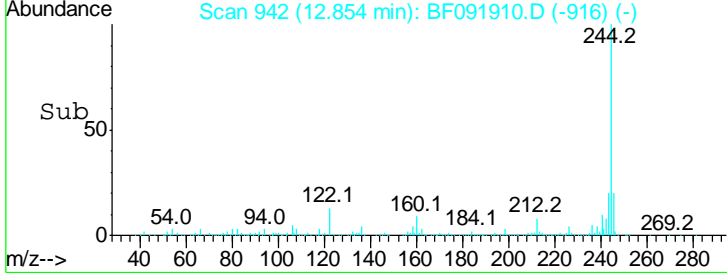
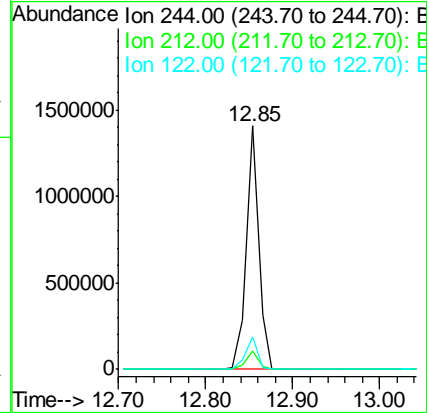
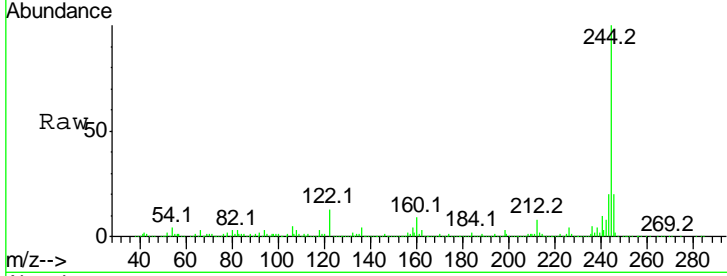


#78
 Terphenyl-d14
 Concen: 92.64 ng
 RT: 12.85 min Scan# 942
 Delta R.T. -0.00 min
 Lab File: BF091910.D
 Acq: 23 Dec 2016 7:22

Instrument :
 BNA_F
ClientSampled :
 SB-51(0-1)-121916

Tgt Ion: 244 Resp: 1390697

Ion	Ratio	Lower	Upper
244	100		
212	7.8	6.2	9.2
122	13.3	11.4	17.2



#86
 Perylene-d12
 Concen: 20.00 ng
 RT: 15.30 min Scan# 1156
 Delta R.T. -0.00 min
 Lab File: BF091910.D
 Acq: 23 Dec 2016 7:22

Tgt Ion: 264 Resp: 287331

Ion	Ratio	Lower	Upper
264	100		
260	24.2	19.2	28.8
265	21.3	17.4	26.0

